

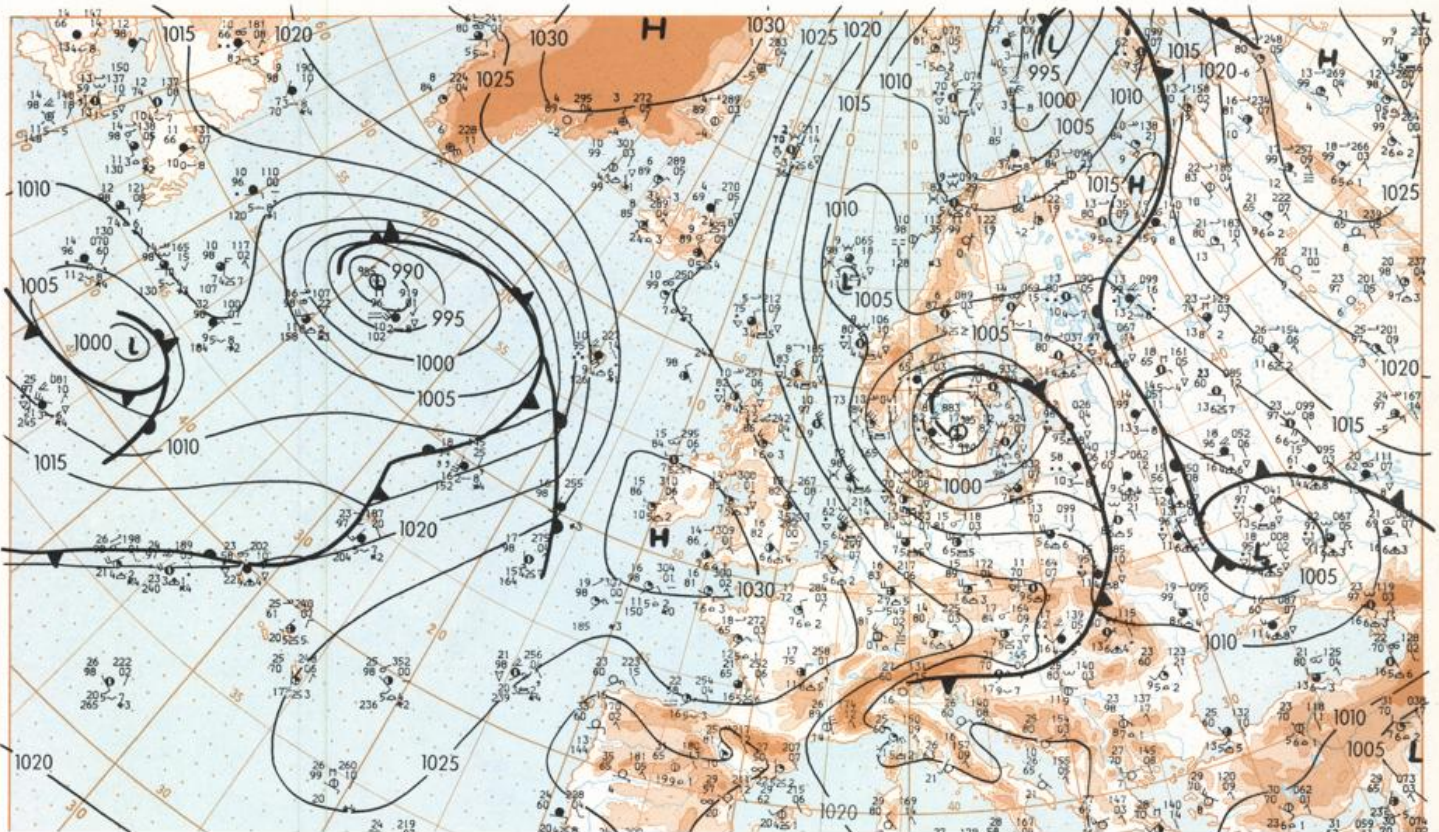
Europäischer Wetterbericht European Meteorological Bulletin Bulletin Météorologique Européen Boletín Meteorológico Europeo

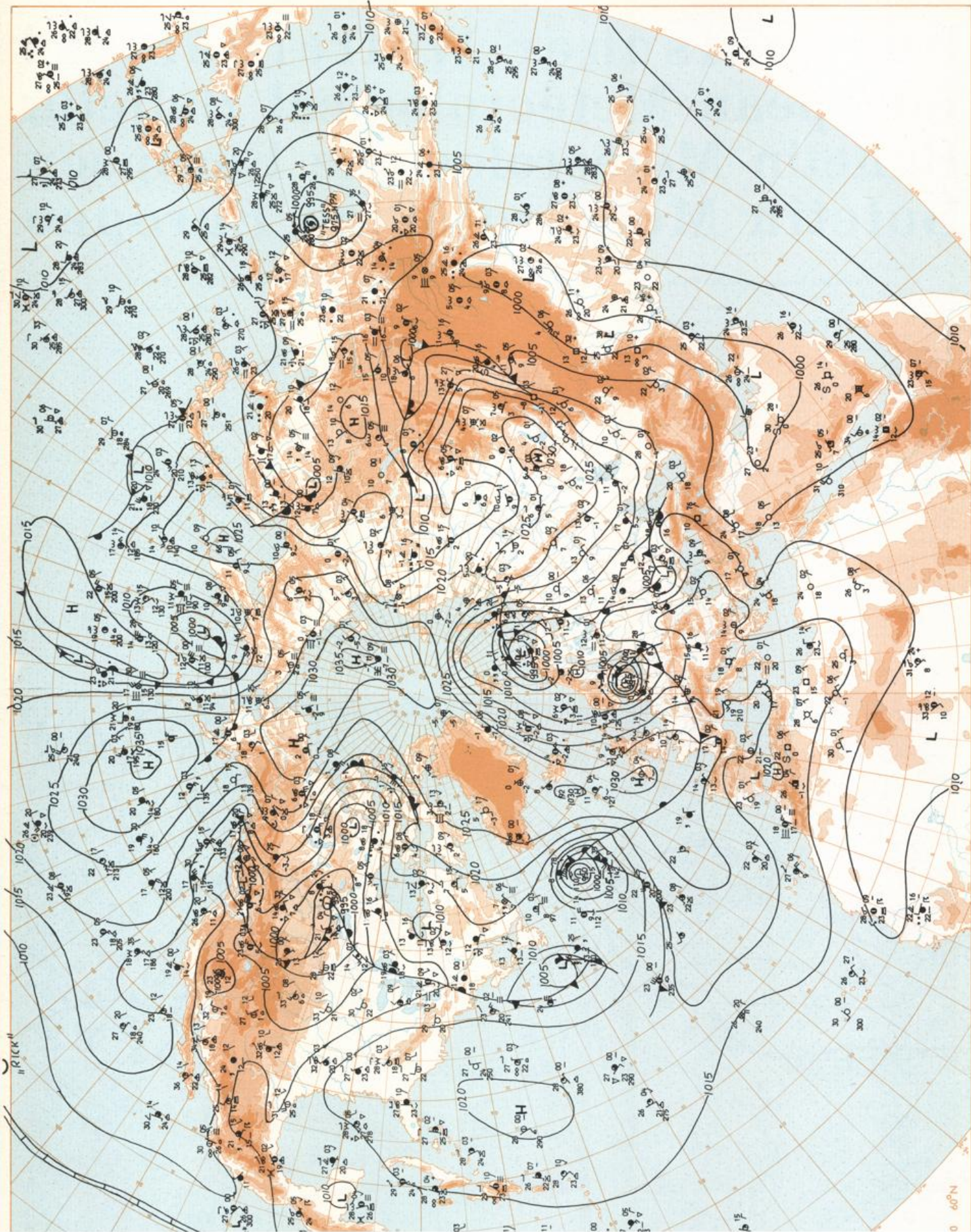
Amtsblatt des Deutschen Wetterdienstes

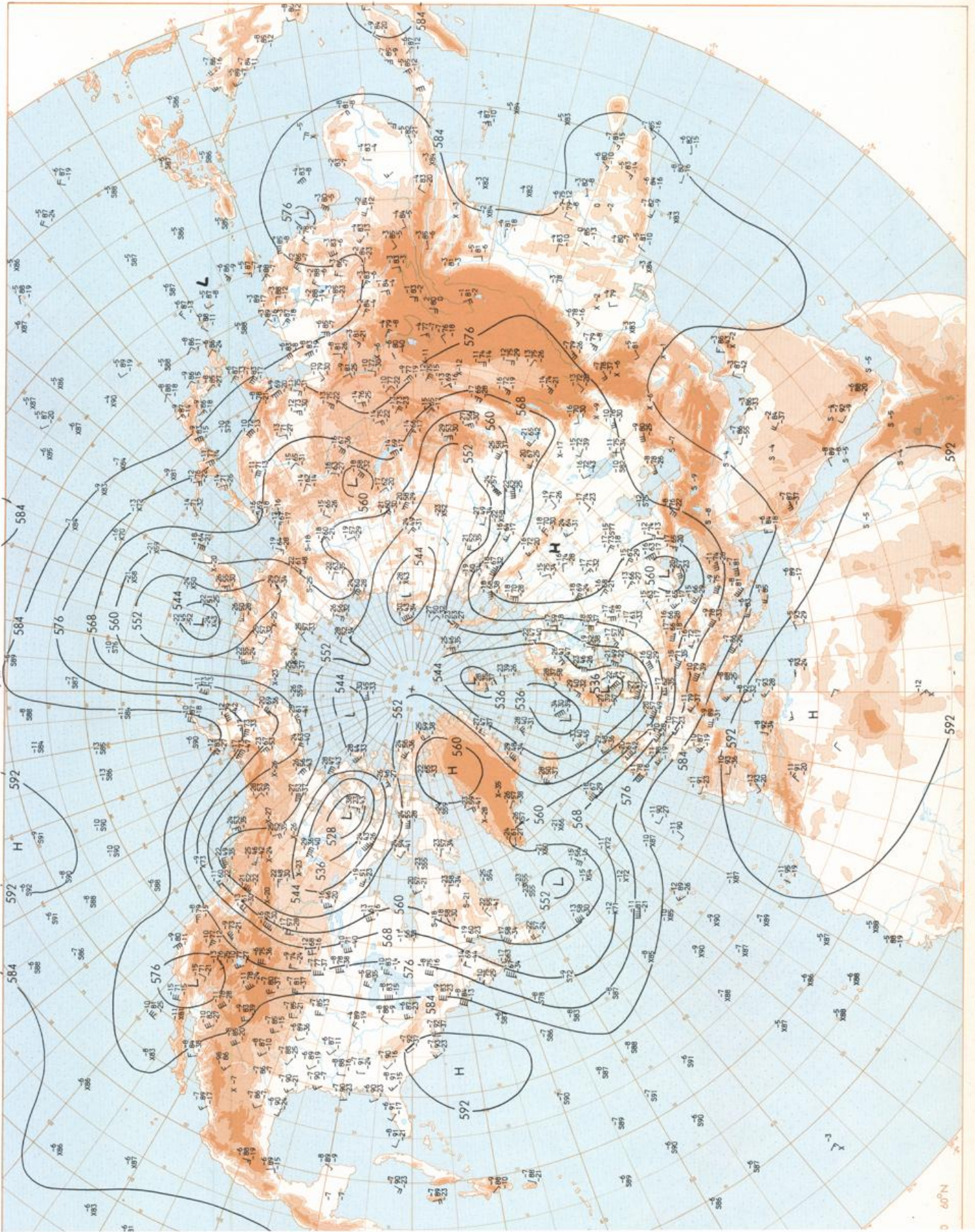
Druck und Verlag: Deutscher Wetterdienst — Zentralamt — D 6050 Offenbach am Main, Frankfurter Straße 135, Tel.: (06 9) 806 20

Er erscheint täglich Bezugspreis monatlich 30,00 DM zuzügl. Porto Nachdruck nicht gestattet	Issued daily Monthly price 30,00 DM plus postage All rights reserved	Publié quotidiennement Prix mensuel 30,00 DM plus port Reproduction interdite	Se publica diariamente Precio de suscripción mensual 30,00 DM plus porte Se prohíbe la reproducción
Jahrgang Volume 10 Volume Volumen	Freitag Friday Vendredi Viernes	6.09.1985	Nummer Number Número Número 249

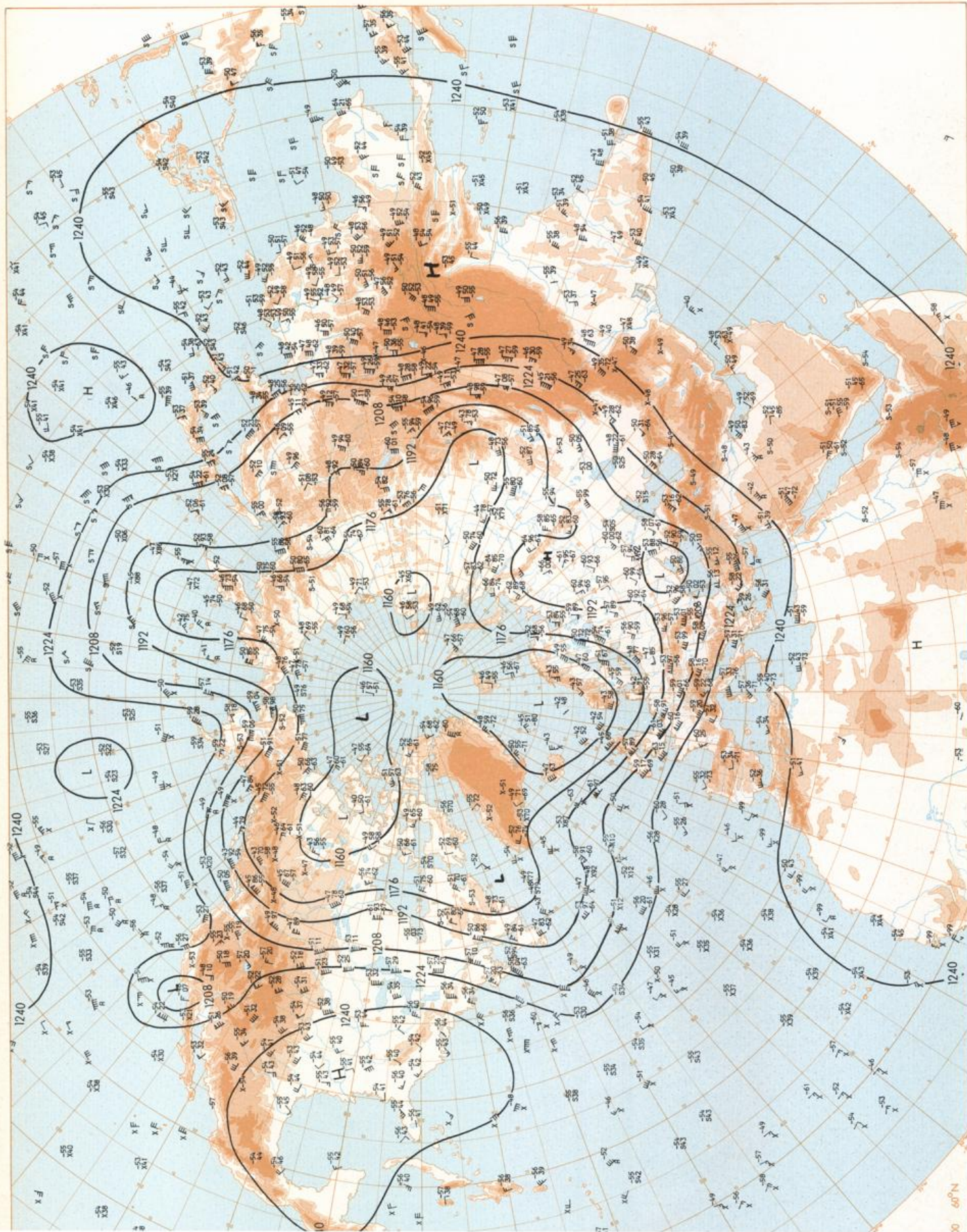
Inhalt Bodenwetterkarte 12 UTC Bodenwetterkarte Nordhemisphäre 00 UTC 500 hPa-Fläche Nordhemisphäre 00 UTC 200 hPa-Fläche Nordhemisphäre 00 UTC 100 hPa-Fläche Nordhemisphäre 00 UTC 850 hPa 00 UTC, 700 hPa 00 UTC Relative Topographie 500/1000 hPa 00 UTC 300 hPa 00 UTC 24stünd. Bodenruckänderung 00 UTC 24stünd. Änderung relative Topographie 500/1000 hPa 00 UTC Aerologische Diagramme 00 UTC	Content Surface chart 12 UTC Surface chart northern hemisphere 00 UTC 500 hPa surface northern hemisphere 00 UTC 200 hPa surface northern hemisphere 00 UTC 100 hPa surface northern hemisphere 00 UTC 850 hPa 00 UTC, 700 hPa 00 UTC Thickness chart 500/1000 hPa 00 UTC 300 hPa 00 UTC 24 hr surface pressure change 00 UTC 24 hr thickness change 500/1000 hPa 00 UTC Aerological diagrams 00 UTC	Contenu Carte de surface à 12 UTC Carte de surface sur l'hémisphère nord à 00 UTC Surface 500 hPa sur l'hémisphère nord à 00 UTC Surface 200 hPa sur l'hémisphère nord à 00 UTC Surface 100 hPa sur l'hémisphère nord à 00 UTC 850 hPa 00 UTC, 700 hPa 00 UTC Carte d'épaisseur 500/1000 hPa 00 UTC 300 hPa 00 UTC Variations de pression en 24 h (niveau mer) en hPa à 00 UTC Variations d'épaisseur 500/1000 hPa en 24 h 00 UTC Diagrammes aérologiques 00 UTC	Contenido Análisis en superficie a las 12 UTC Análisis en superficie hemisferio norte a las 00 UTC Topografía de la superficie de 500 hPa hemisferio norte a las 00 UTC Topografía de la superficie de 200 hPa hemisferio norte a las 00 UTC Topografía de la superficie de 100 hPa hemisferio norte a las 00 UTC 850 hPa 00 UTC, 700 hPa 00 UTC Relativo 500/1000 hPa 00 UTC 300 hPa 00 UTC Variación de la presión del suelo 24 h en hPa a las 00 UTC Variación de espesor 500/1000 hPa en 24 h 00 UTC Diagramas aerológicos 00 UTC
---	---	--	---

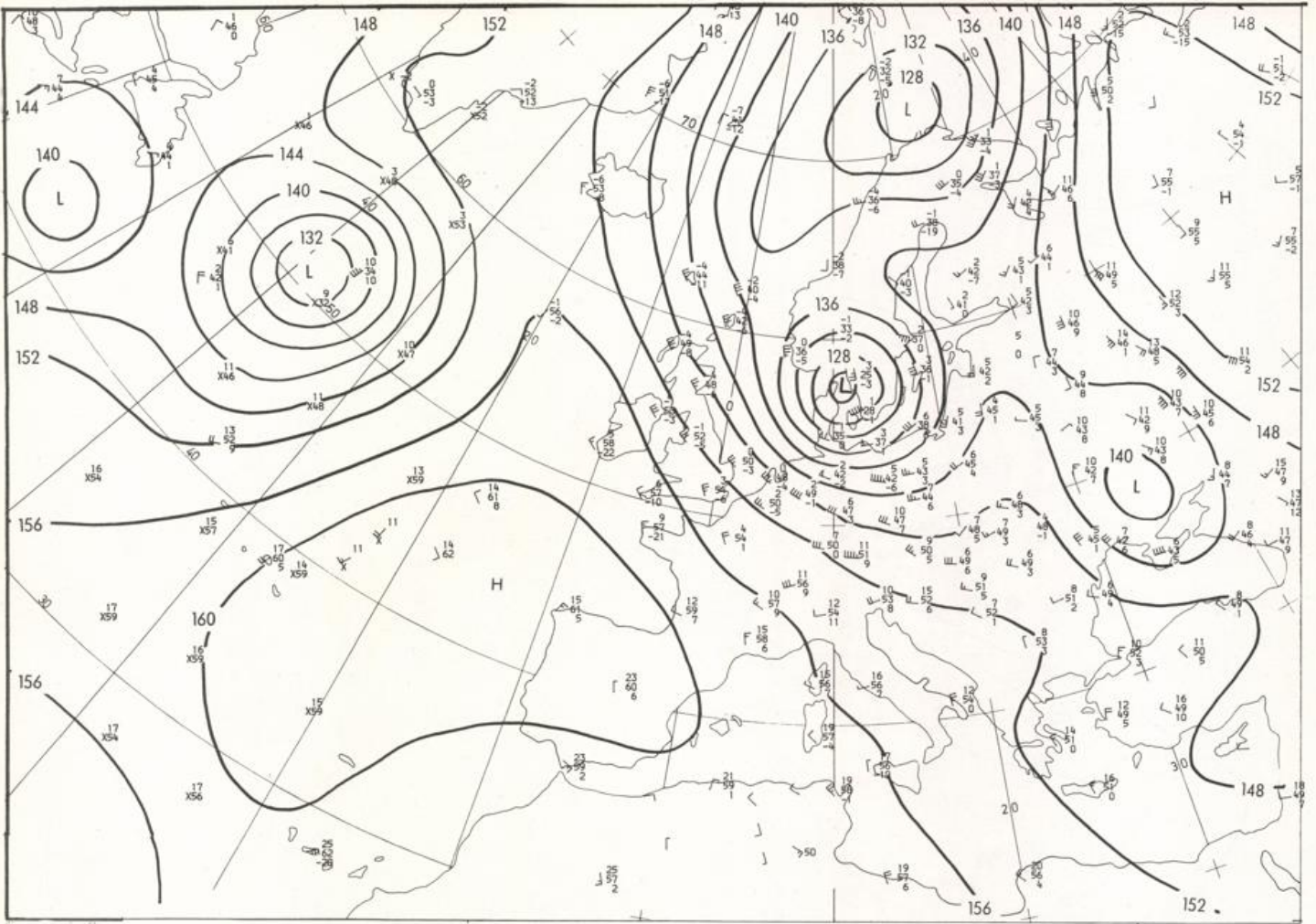






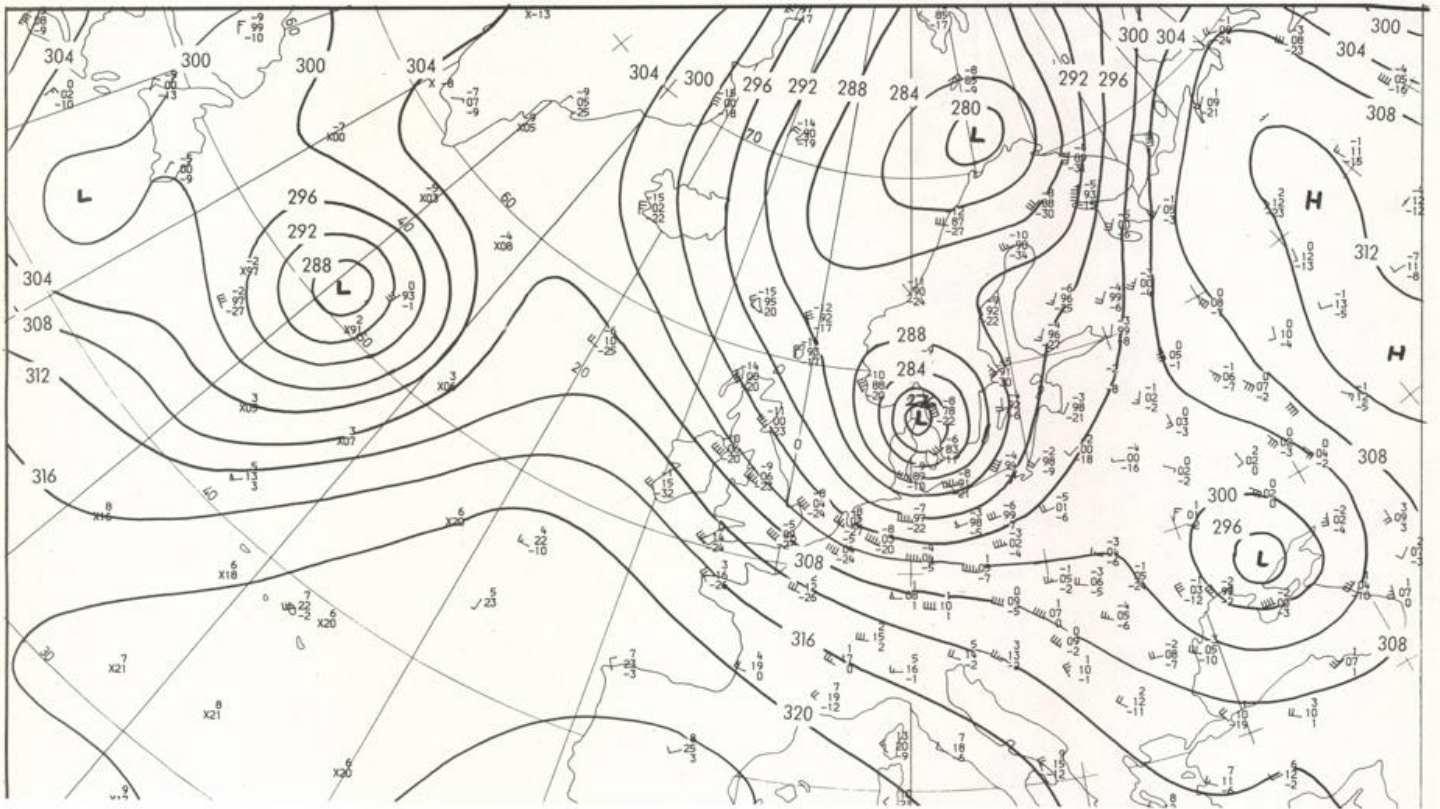
60°N

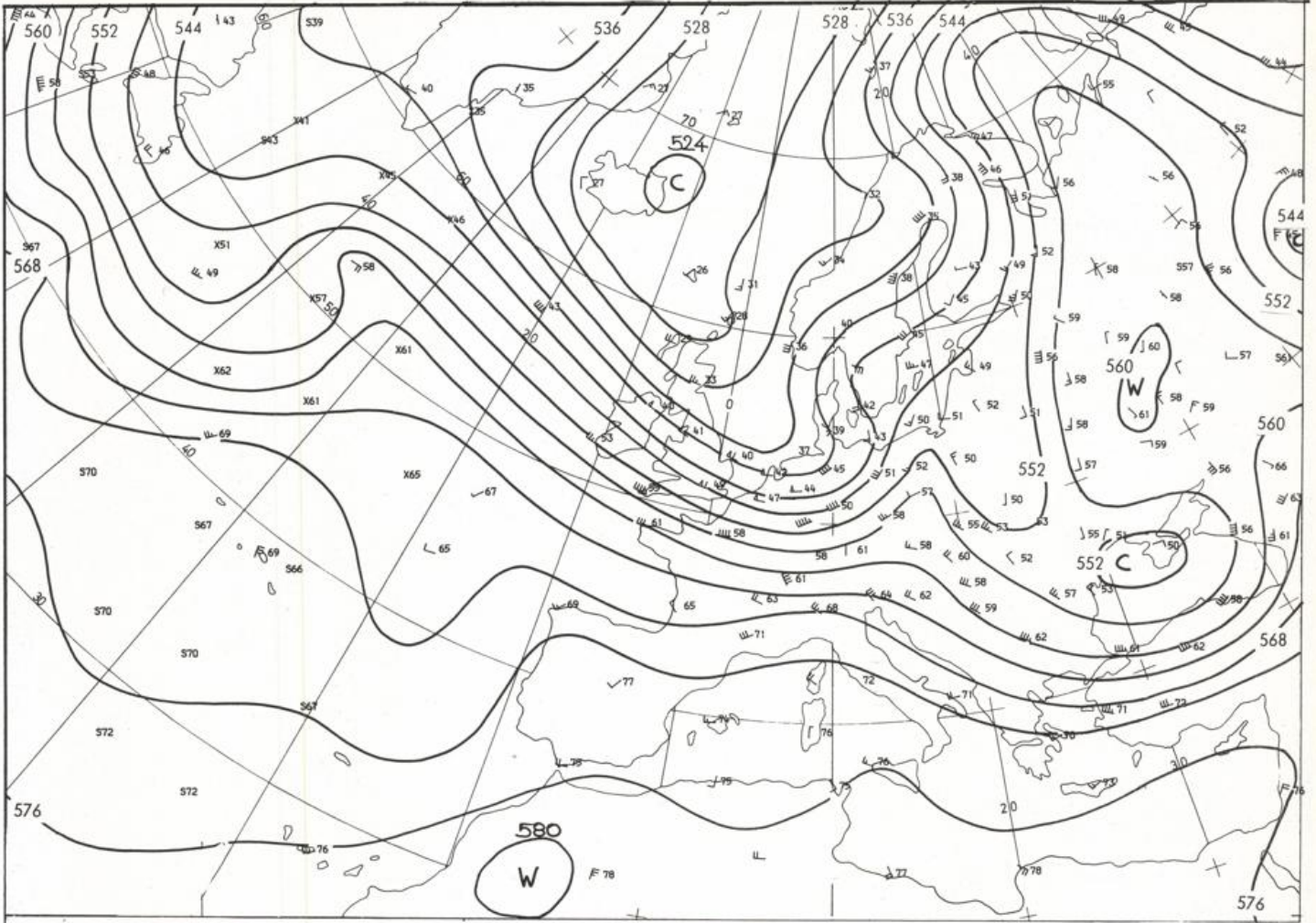




Stereogr. proj.: 1:30 000 000 In 60°N

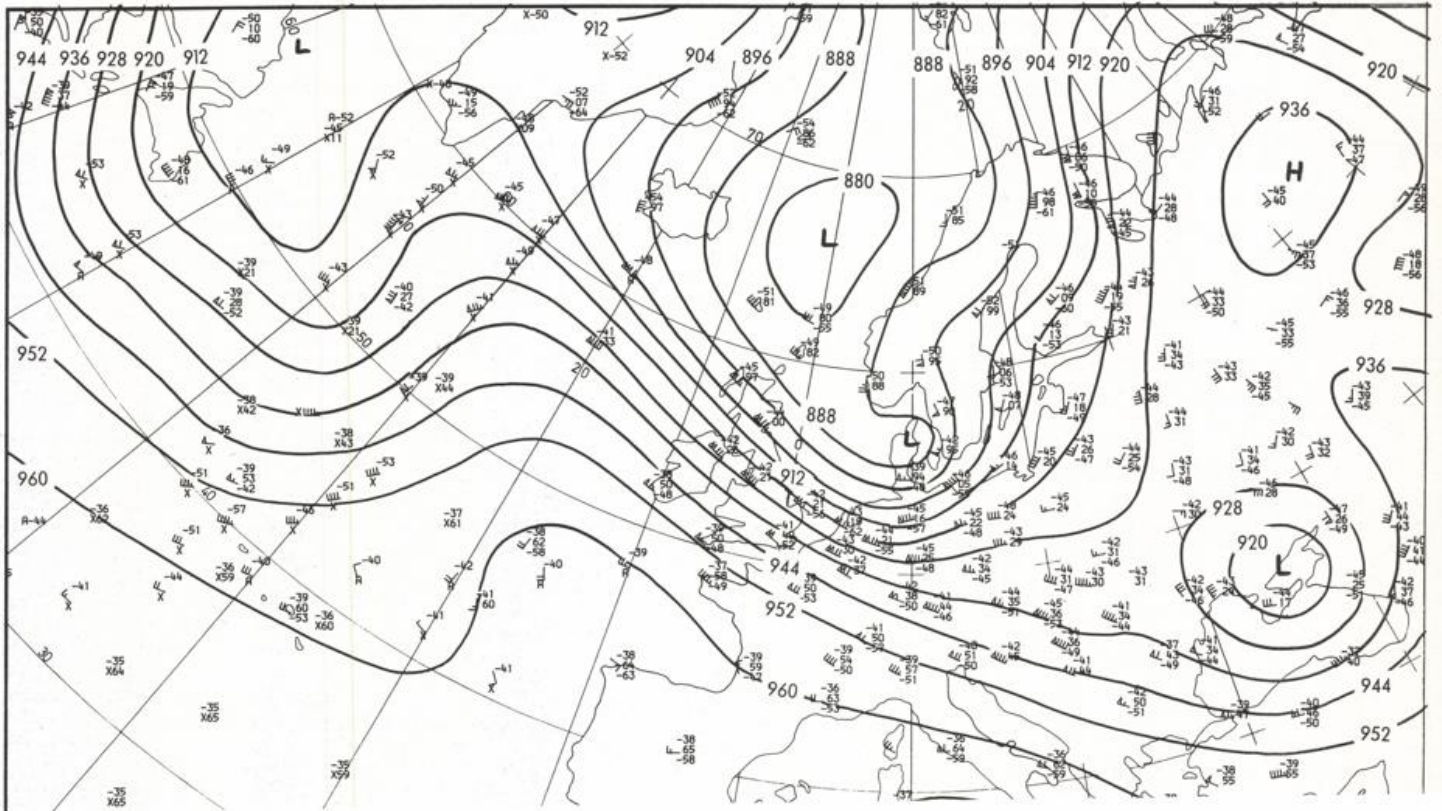
850 hPa 00 UTC

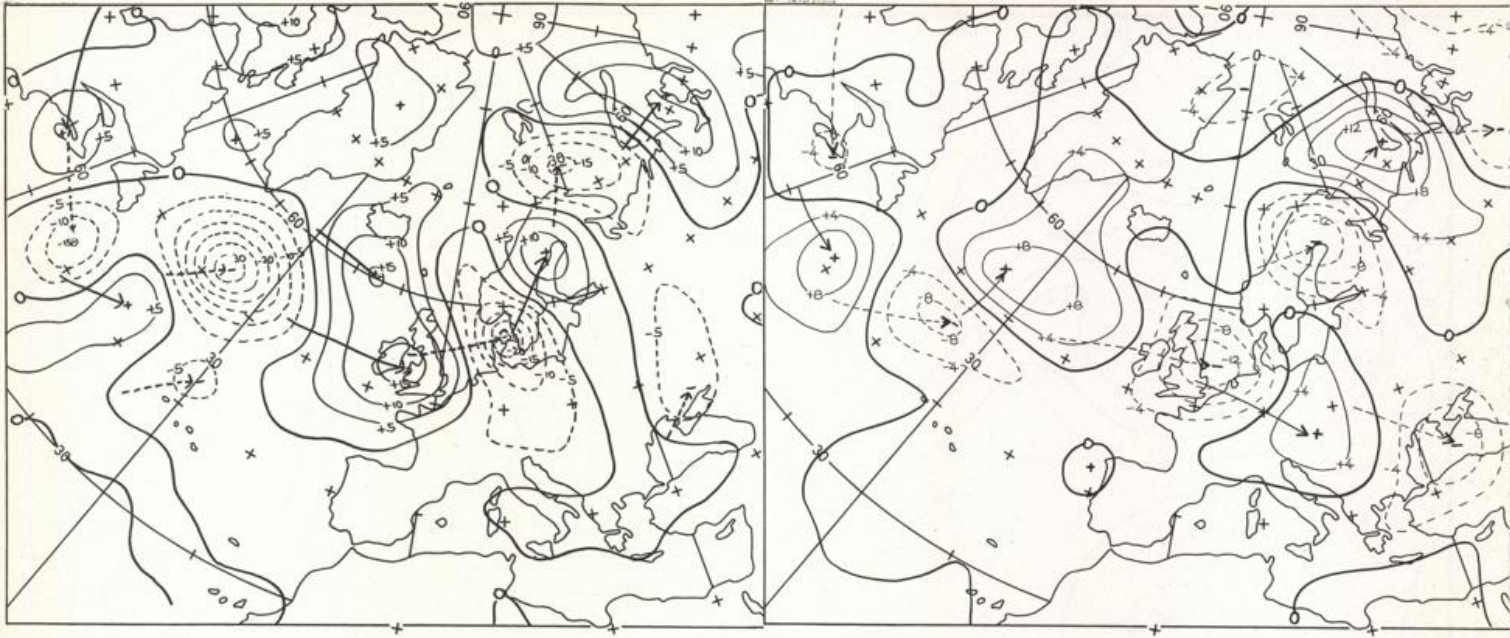




Stereogr. proj. 1:30 000 000 in 60°N

500/1000 hPa 00 UTC

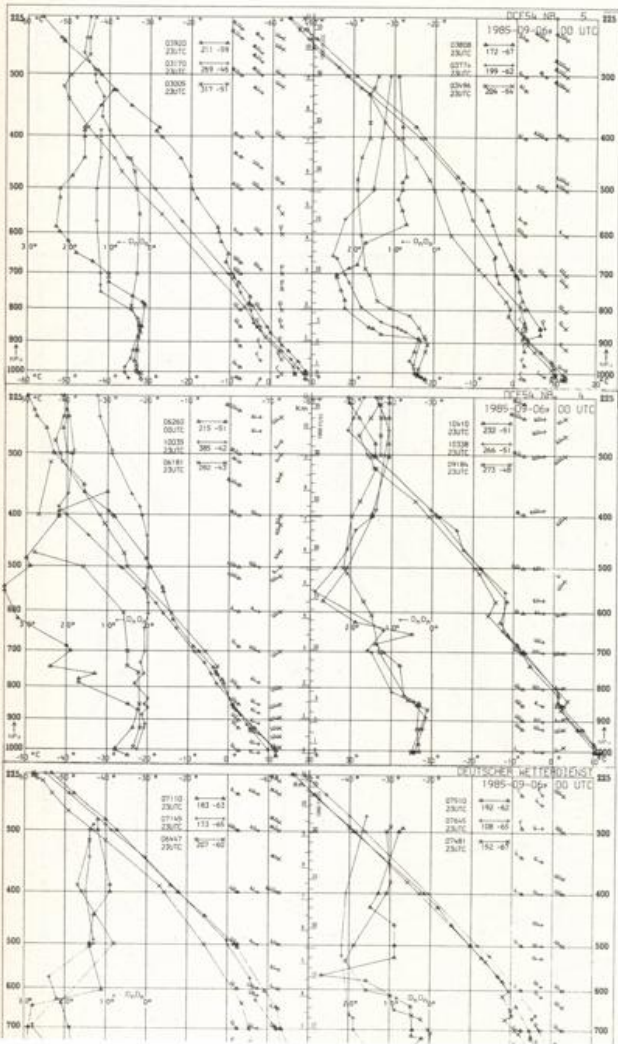




Stereogr. proj. 1:60 000 000

24 hr surface pressure change 00 UTC

24 hr thickness change 00 UTC



Aerological Diagrams 00 GMT

- 01241 Orland
- 01384 Oslo
- 01415 Stavanger
- 02465 Stockholm
- 02527 Goteborg
- 03005 Lerwick
- 03170 Shanwell
- 03496 Hemsby
- 03774 Crawley
- 03808 Camborne
- 03920 Long Kesh
- 06181 Kobenhavn
- 06260 De Bilt
- 06447 Uccle
- 06610 Payerne
- 07110 Brest
- 07145 Trappes
- 07481 Lyon
- 07510 Bordeaux
- 07645 Nimes
- 09184 Greifswald
- 09393 Lindenberg
- 09548 Meiningen
- 10035 Schleswig
- 10338 Hannover
- 10410 Essen
- 10739 Stuttgart
- 10868 München-Oberschleißheim
- 11035 Wien
- 11520 Praha-Libus
- 12374 Legionowo
- 12843 Budapest
- 13275 Beograd
- 16044 Udine
- 16080 Milano

