

# Europäischer Wetterbericht European Meteorological Bulletin Bulletin Météorologique Européen Boletín Meteorológico Europeo

Amtsblatt des Deutschen Wetterdienstes

Druck und Verlag: Deutscher Wetterdienst — Zentralamt — D 6050 Offenbach am Main, Frankfurter Straße 135, Tel.: (06 9) 80620

Erscheint täglich  
Bezugspreis monatlich 30,00 DM  
zuzügl. Porto  
Nachdruck nicht gestattet

Issued daily  
Monthly price 30,00 DM  
plus postage  
All rights reserved

Publié quotidiennement  
Prix mensuel 30,00 DM  
plus port  
Reproduction interdite

Se publica diariamente  
Precio de suscripción mensual 30,00 DM  
plus porte  
Se prohíbe la reproducción

Jahrgang  
Volume 11  
Volume  
Volumen

Samstag  
Saturday  
Samedi  
Sábado 21.06.1986

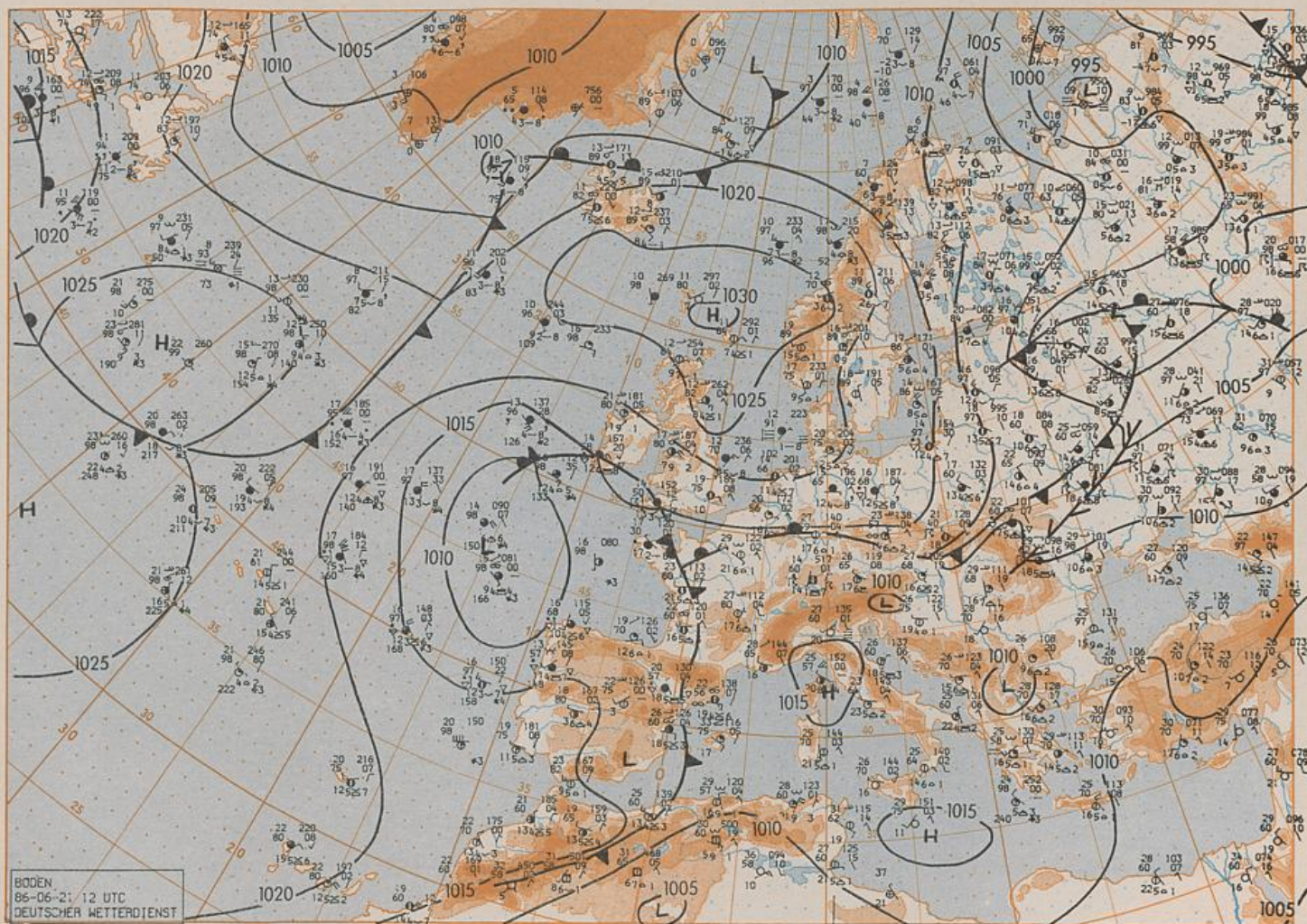
Nummer  
Number 172  
Número  
Número

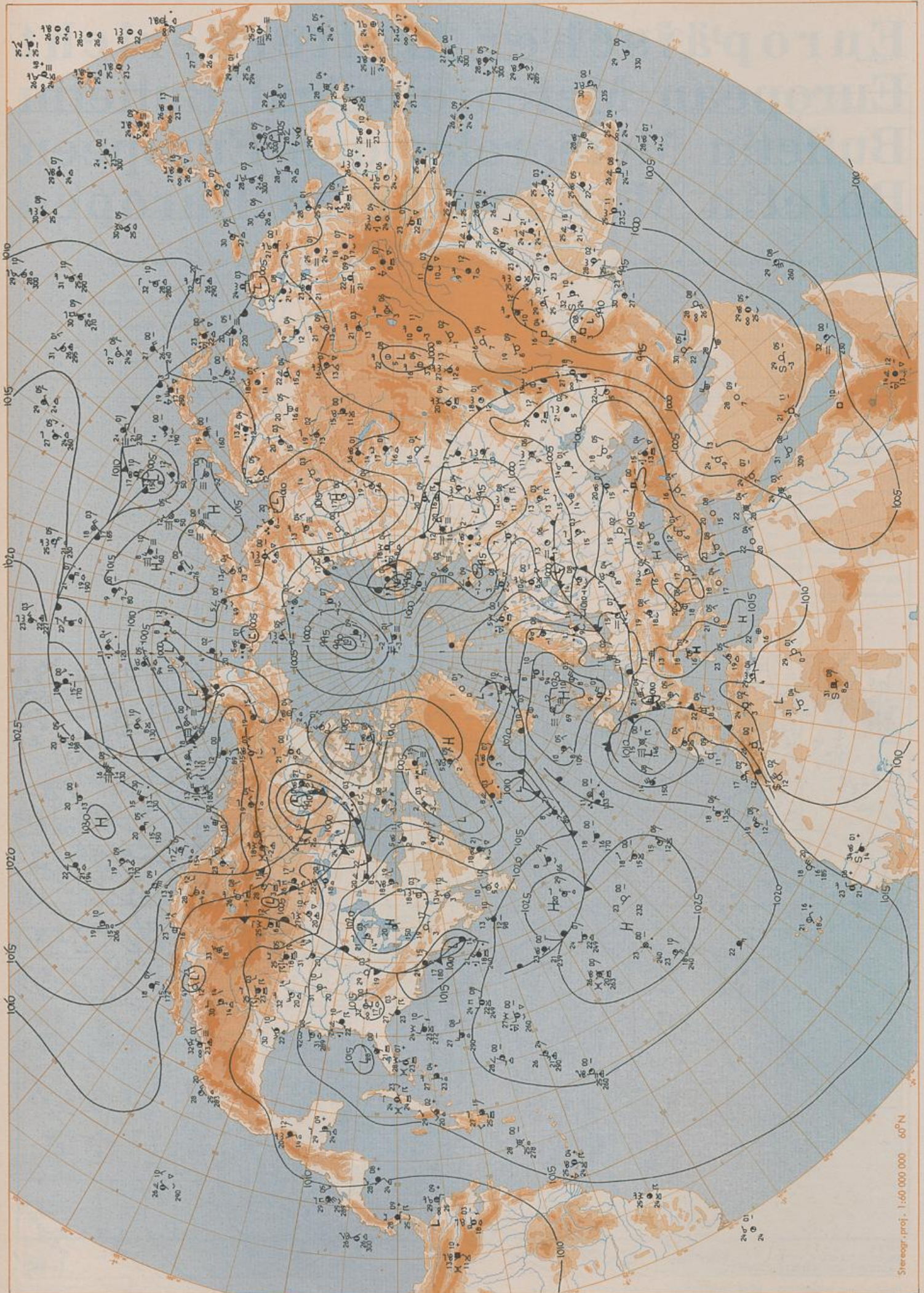
**Inhalt.**  
Bodenwetterkarte 12 UTC  
Bodenwetterkarte Nordhemisphäre 00 UTC  
500 hPa-Fläche Nordhemisphäre 00 UTC  
200 hPa-Fläche Nordhemisphäre 00 UTC  
100 hPa-Fläche Nordhemisphäre 00 UTC  
850 hPa 00 UTC, 700 hPa 00 UTC  
Relative Topographie 500/1000 hPa 00 UTC  
300 hPa 00 UTC  
24tdg Bodendruckänderung 00 UTC  
24tdg Änderung relative Topographie  
500/1000 hPa 00 UTC  
Aerologische Diagramme 00 UTC

**Content**  
Surface chart 12 UTC  
Surface chart northern hemisphere 00 UTC  
500 hPa surface northern hemisphere 00 UTC  
200 hPa surface northern hemisphere 00 UTC  
100 hPa surface northern hemisphere 00 UTC  
850 hPa 00 UTC, 700 hPa 00 UTC  
Thickness chart 500/1000 hPa 00 UTC  
300 hPa 00 UTC  
24 hr surface pressure change 00 UTC  
24 hr thickness change  
500/1000 hPa 00 UTC  
Aerological diagrams 00 UTC

**Contenu**  
Carte de surface à 12 UTC  
Carte de surface sur l'hémisphère nord à 00 UTC  
Surface 500 hPa sur l'hémisphère nord à 00 UTC  
Surface 200 hPa sur l'hémisphère nord à 00 UTC  
Surface 100 hPa sur l'hémisphère nord à 00 UTC  
850 hPa 00 UTC, 700 hPa 00 UTC  
Carte d'épaisseur 500/1000 hPa 00 UTC  
300 hPa 00 UTC  
Variations de pression en 24 h (niveau mer)  
en hPa à 00 UTC  
Variations d'épaisseur 500/1000 hPa  
en 24 h 00 UTC  
Diagrammes aérologiques 00 UTC

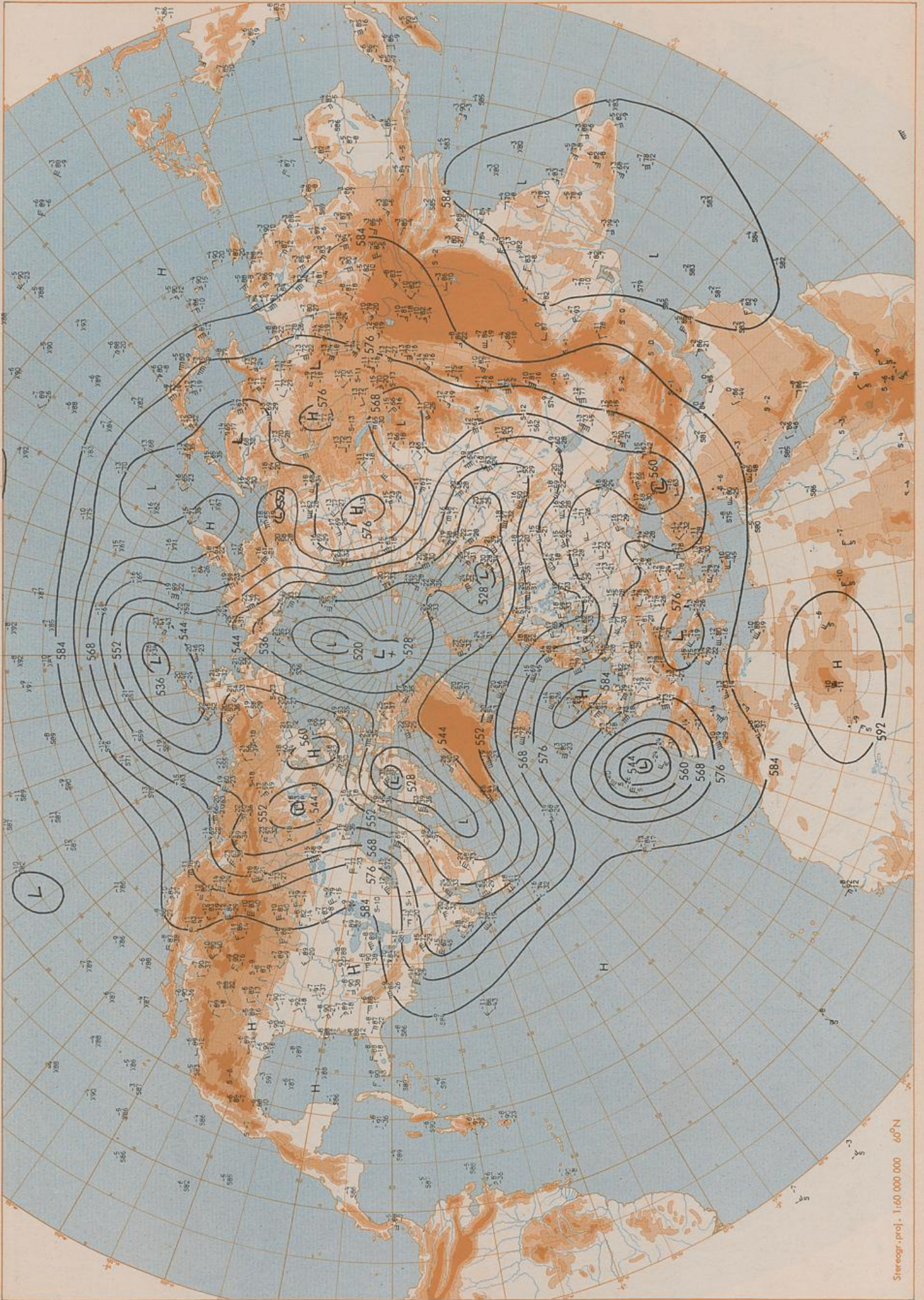
**Contenido**  
Análisis en superficie a las 12 UTC  
Análisis en superficie hemisferio norte a las 00 UTC  
Topografía de la superficie de 500 hPa hemisferio norte a las 00 UTC  
Topografía de la superficie de 200 hPa hemisferio norte a las 00 UTC  
Topografía de la superficie de 100 hPa hemisferio norte a las 00 UTC  
850 hPa 00 UTC, 700 hPa 00 UTC  
Relativa 500/1000 hPa 00 UTC  
300 hPa 00 UTC  
Variación de la presión del suelo 24 h en hPa a las 00 UTC  
Variación de espesor 500/1000 hPa en 24 h 00 UTC  
Diagramas aerológicos 00 UTC



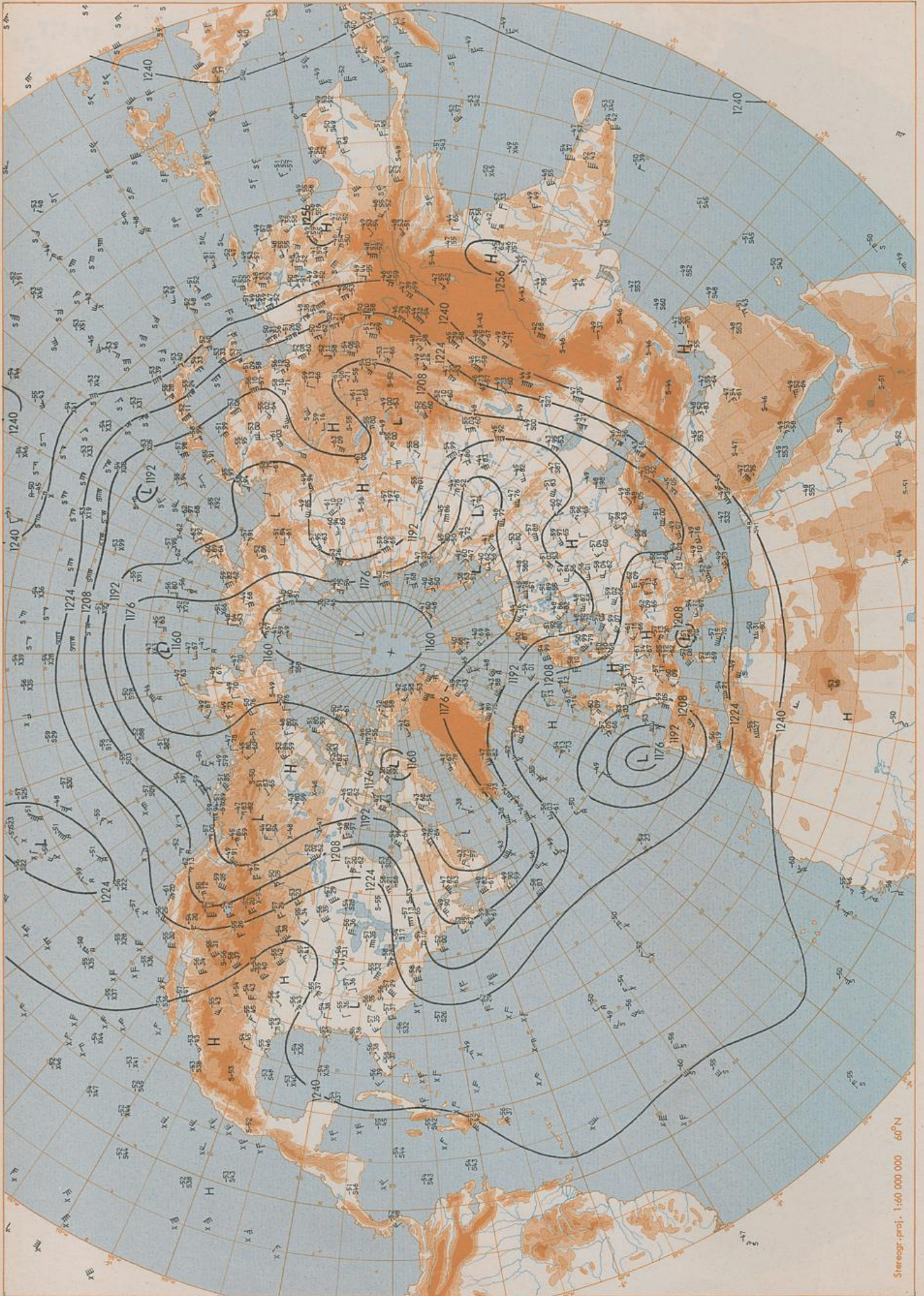


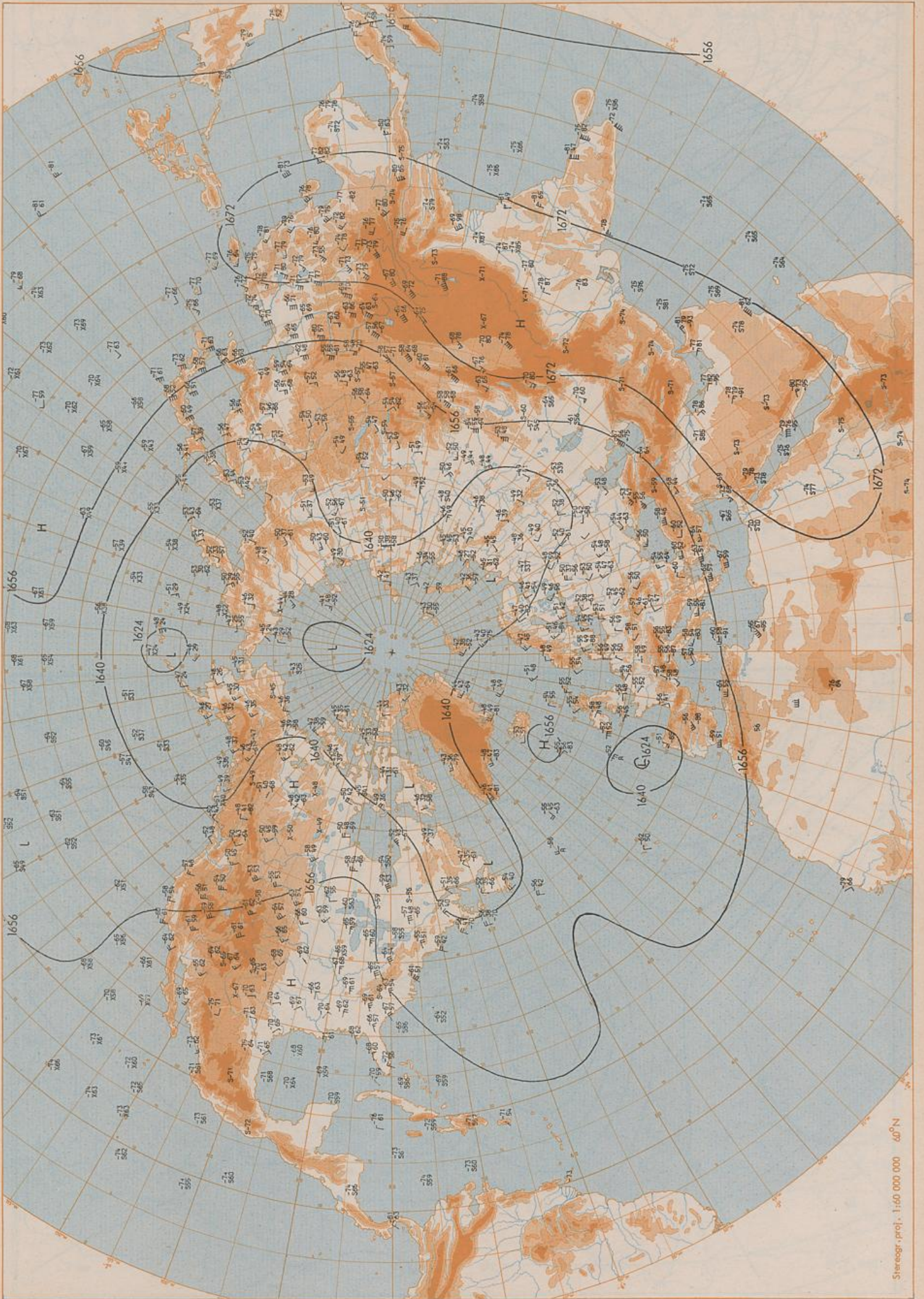
Surface chart 00 UTC

Stereogr. proj. 1:60 000 000 60°N



500 hPa 00 UTC

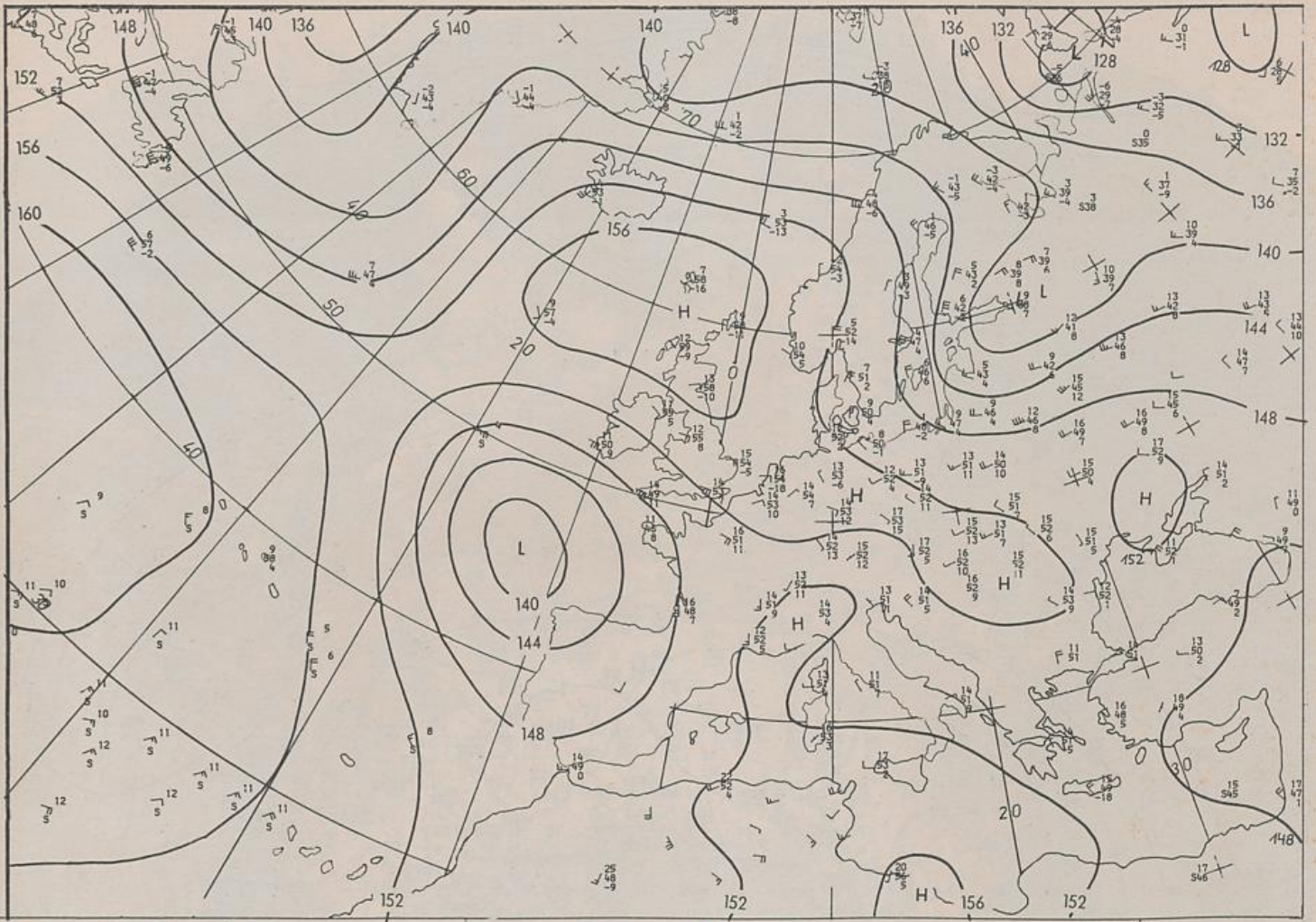




100 hPa 00 UTC

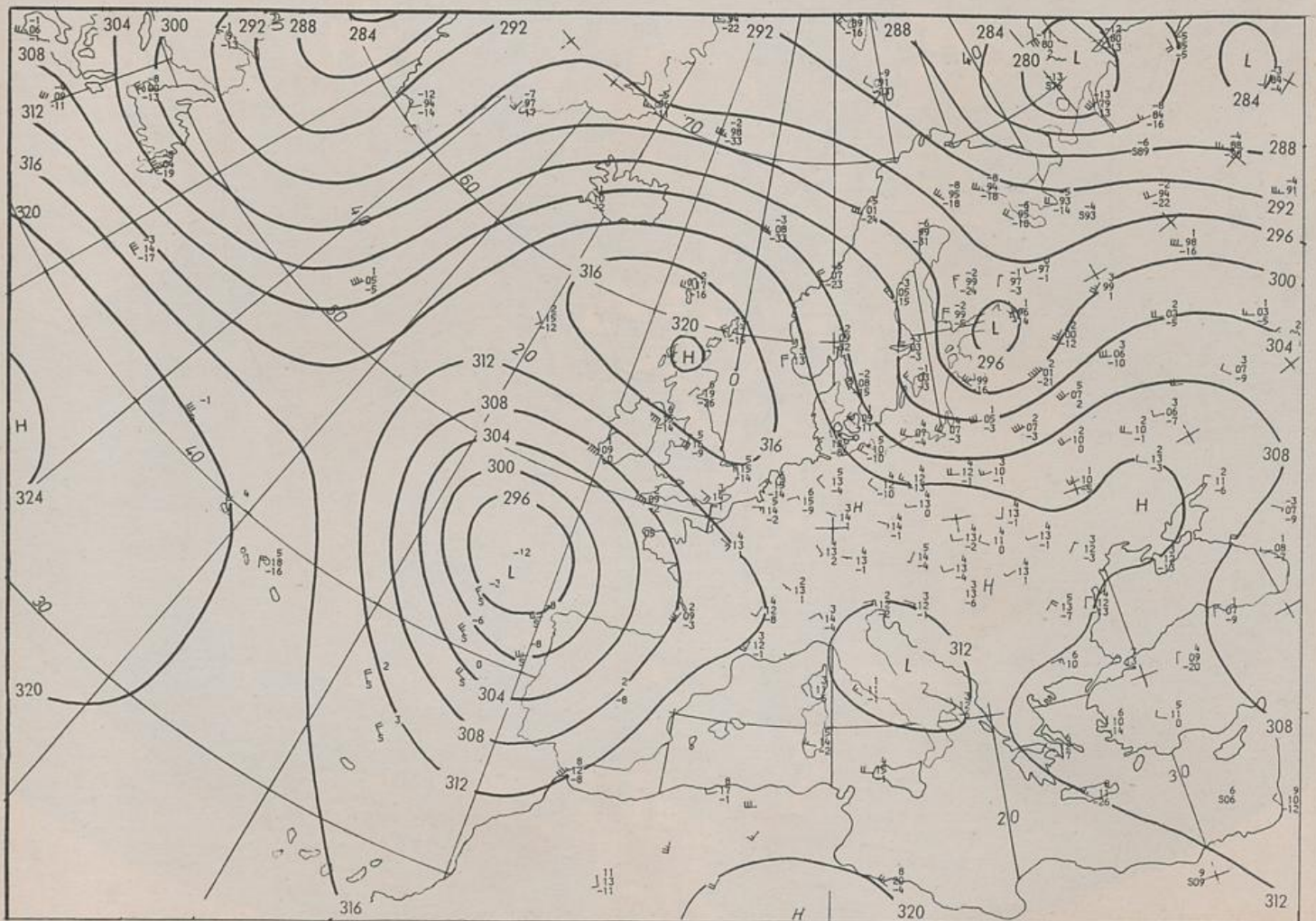
Stereogr. proj. 1:60 000 000 60°N

21.06.1986

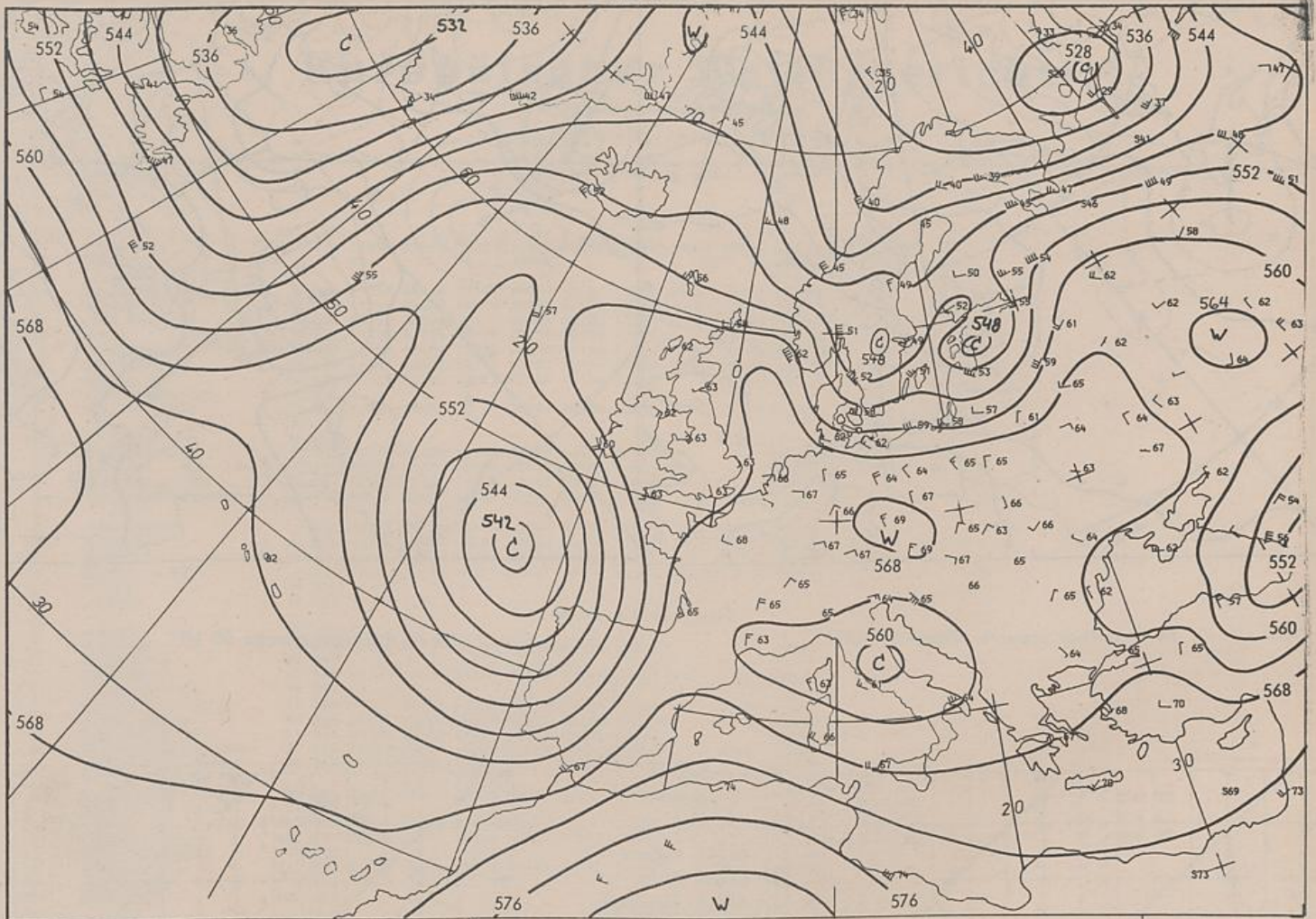


Stereogr. proj. 1:30 000 000 in 60°N

850 hPa 00 UTC

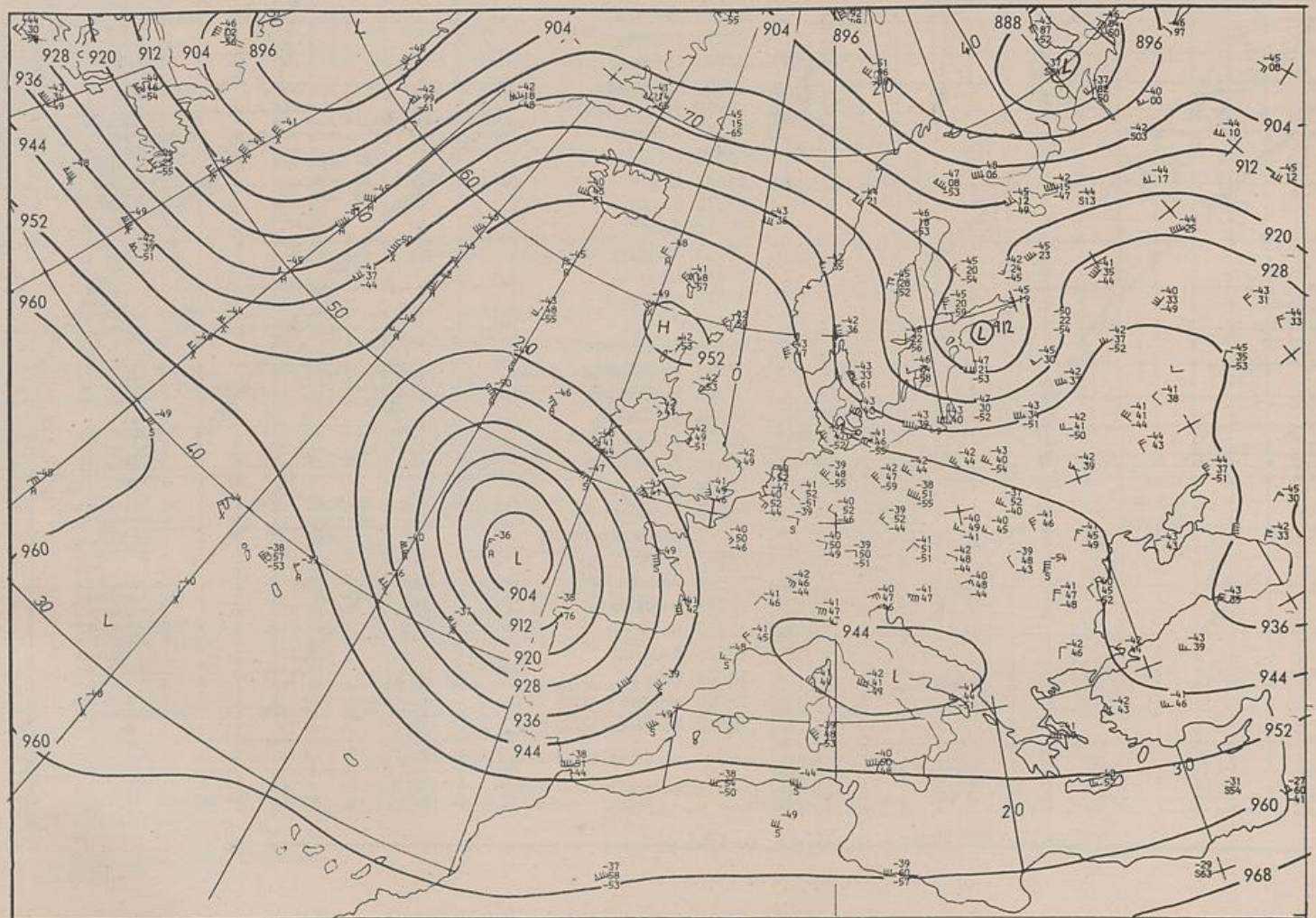


700 hPa 00 UTC

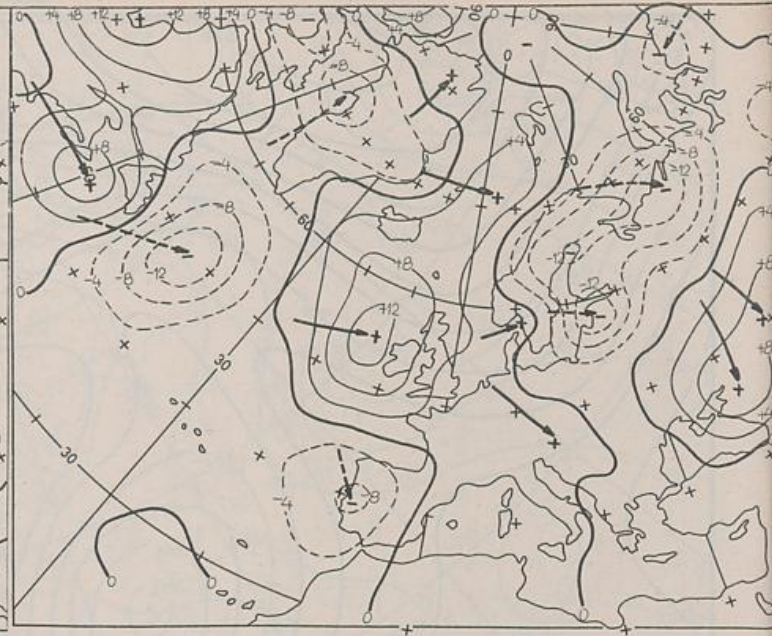
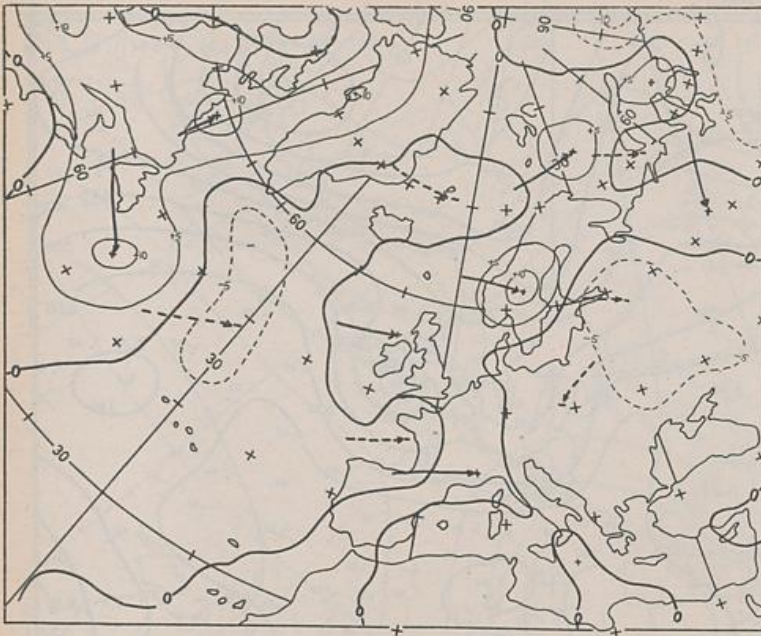


Stereogr. proj. 1:30 000 000 in 60°N

500/1000 hPa 00 UTC



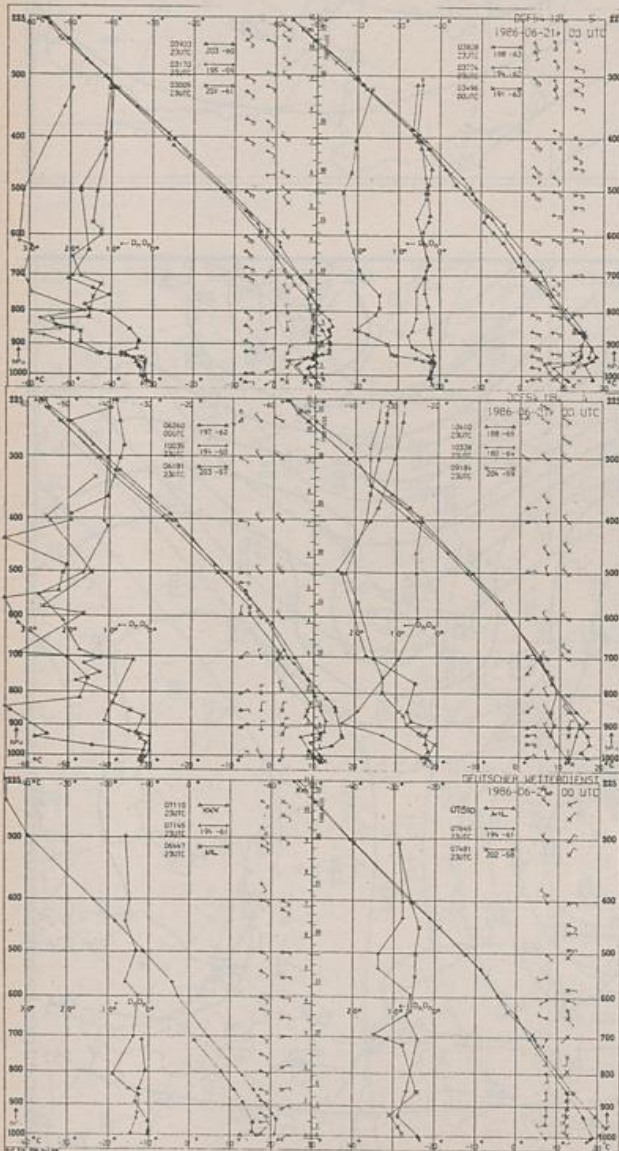
300 hPa 00 UTC



Stereogr. proj. 1:60 000 000

24 hr surface pressure change 00 UTC

24 hr thickness change 00 UTC



Aerological Diagrams 00 GMT

- 01241 Orland
- 01384 Oslo
- 01415 Stavanger
- 02465 Stockholm
- 02527 Goteborg
- 03005 Lerwick
- 03170 Shanwell
- 03496 Hemsby
- 03774 Crawley
- 03808 Camborne
- 03920 Long Kesh
- 06181 Kobenhavn
- 06260 De Bilt
- 06447 Uccle
- 06610 Payeme
- 07110 Brest
- 07145 Trappes
- 07481 Lyon
- 07510 Bordeaux
- 07645 Nimes
- 09184 Greifswald
- 09393 Lindenberg
- 09548 Meiningen
- 10035 Schleswig
- 10338 Hannover
- 10410 Essen
- 10739 Stuttgart
- 10868 München-Oberschleißheim
- 11035 Wien
- 11520 Praha-Libus
- 12374 Legionowo
- 12843 Budapest
- 13275 Beograd
- 16044 Udine
- 16080 Milano
- 16242 Roma

