

Europäischer Wetterbericht European Meteorological Bulletin Bulletin Météorologique Européen Boletín Meteorológico Europeo

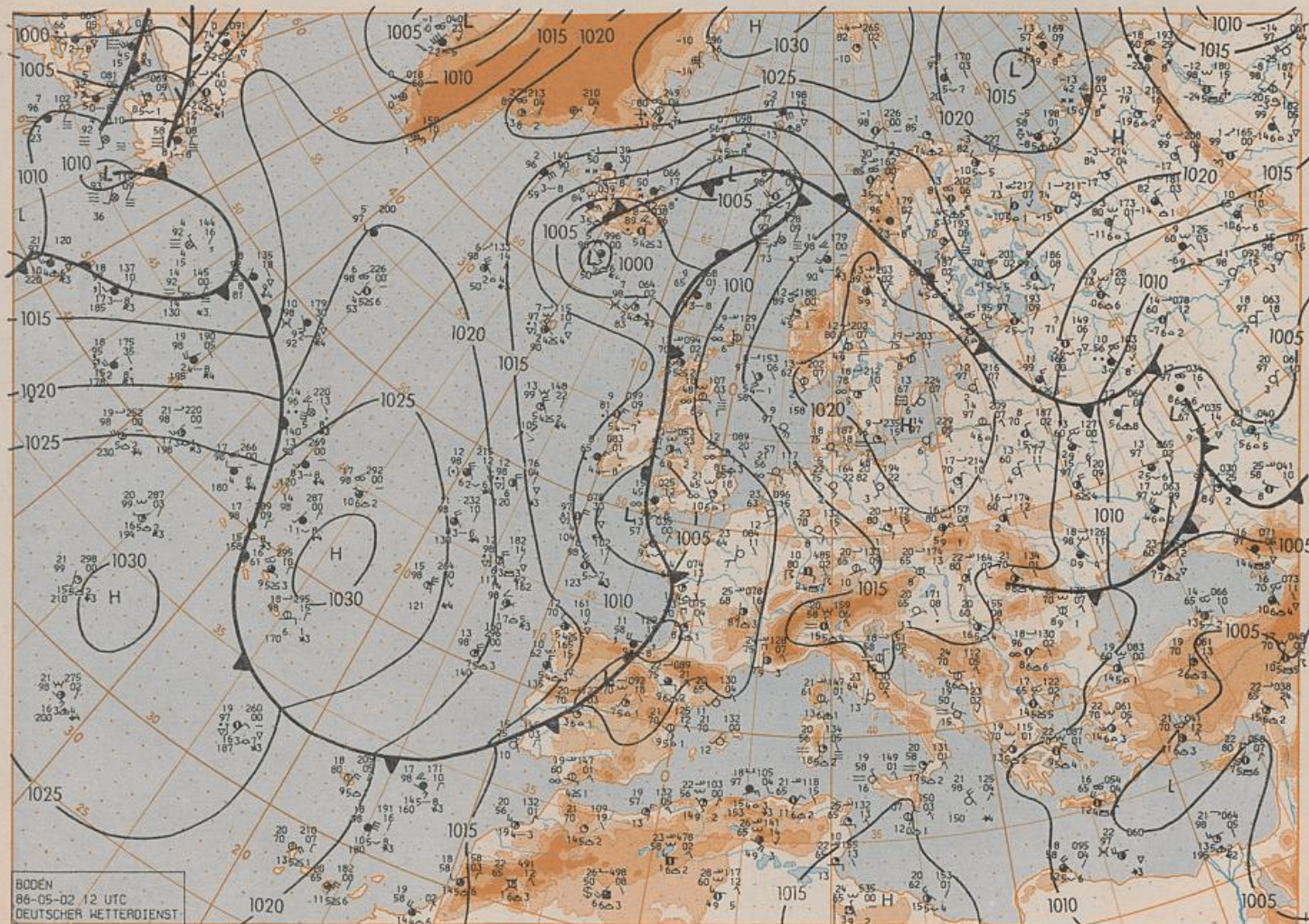
Amtsblatt des Deutschen Wetterdienstes

Druck und Verlag: Deutscher Wetterdienst — Zentralamt — D 6050 Offenbach am Main, Frankfurter Straße 135, Tel.: (06 9) 80620

Er erscheint täglich	Issued daily	Publié quotidiennement	Se publica diariamente
Bezugspreis monatlich 30,00 DM zuzügl. Porto	Monthly price 30,00 DM plus postage	Prix mensuel 30,00 DM plus port	Precio de suscripción mensual 30,00 DM plus porte
Nachdruck nicht gestattet	All rights reserved	Reproduction interdite	Se prohíbe la reproducción

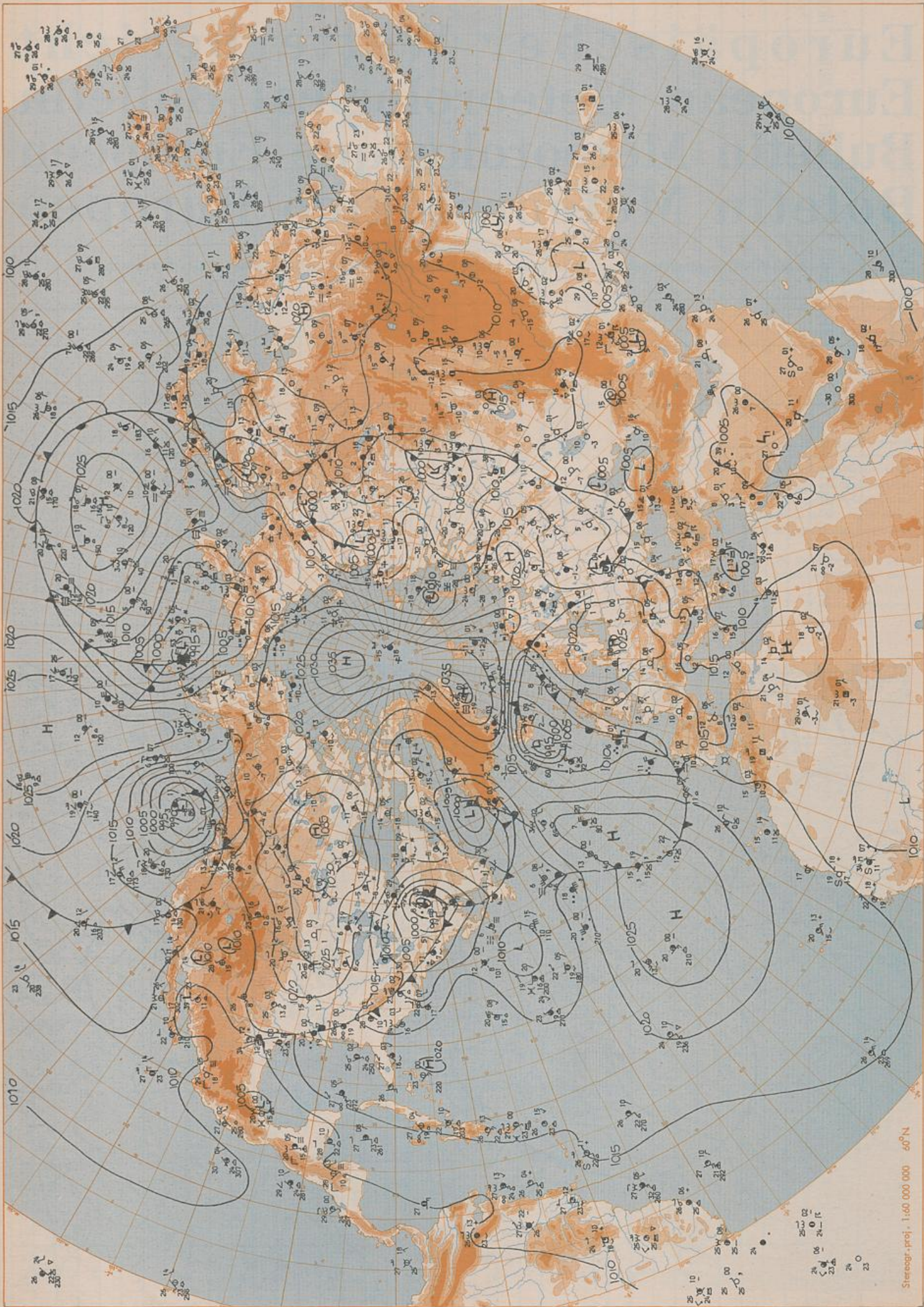
Jahrgang Volume Volume Volumen	11	Freitag Friday Vendredi Viernes	2.05.1986	Nummer Number Número Número	122
---	----	--	-----------	--------------------------------------	-----

Inhalt	Content	Contenu	Contenido
Bodenwetterkarte 12 UTC	Surface chart 12 UTC	Carte de surface à 12 UTC	Análisis en superficie a las 12 UTC
Bodenwetterkarte Nordhemisphäre 00 UTC	Surface chart northern hemisphere 00 UTC	Carte de surface sur l'hémisphère nord à 00 UTC	Análisis en superficie hemisferio norte a las 00 UTC
500 hPa-Fläche Nordhemisphäre 00 UTC	500 hPa surface northern hemisphere 00 UTC	Surface 500 hPa sur l'hémisphère nord à 00 UTC	Topografía de la superficie de 500 hPa hemisferio norte a las 00 UTC
200 hPa-Fläche Nordhemisphäre 00 UTC	200 hPa surface northern hemisphere 00 UTC	Surface 200 hPa sur l'hémisphère nord à 00 UTC	Topografía de la superficie de 200 hPa hemisferio norte a las 00 UTC
100 hPa-Fläche Nordhemisphäre 00 UTC	100 hPa surface northern hemisphere 00 UTC	Surface 100 hPa sur l'hémisphère nord à 00 UTC	Topografía de la superficie de 100 hPa hemisferio norte a las 00 UTC
850 hPa 00 UTC, 700 hPa 00 UTC	850 hPa 00 UTC, 700 hPa 00 UTC	850 hPa 00 UTC, 700 hPa 00 UTC	Topografía de la superficie de 850 hPa hemisferio norte a las 00 UTC
Relative Topographie 500/1000 hPa 00 UTC	Thickness chart 500/1000 hPa 00 UTC	Carte d'épaisseur 500/1000 hPa 00 UTC	Topografía de la superficie de 500/1000 hPa hemisferio norte a las 00 UTC
300 hPa 00 UTC	300 hPa 00 UTC	300 hPa 00 UTC	850 hPa 00 UTC, 700 hPa 00 UTC
24stg Bodendruckänderung 00 UTC	24 hr surface pressure change 00 UTC	Variations de pression en 24 h (niveau mer) en hPa à 00 UTC	Relativa 300/1000 hPa 00 UTC
24stg Änderung relative Topographie	24 hr thickness change	Variations d'épaisseur 500/1000 hPa en 24 h 00 UTC	300 hPa 00 UTC
500/1000 hPa 00 UTC	500/1000 hPa 00 UTC	Diagrammes aérologiques 00 UTC	Variación de la presión del suelo 24 h en hPa a las 00 UTC
Aerologische Diagramme 00 UTC	Aerological diagrams 00 UTC		Variación de espesor 500/1000 hPa en 24 h 00 UTC
			Diagramas aerológicos 00 UTC



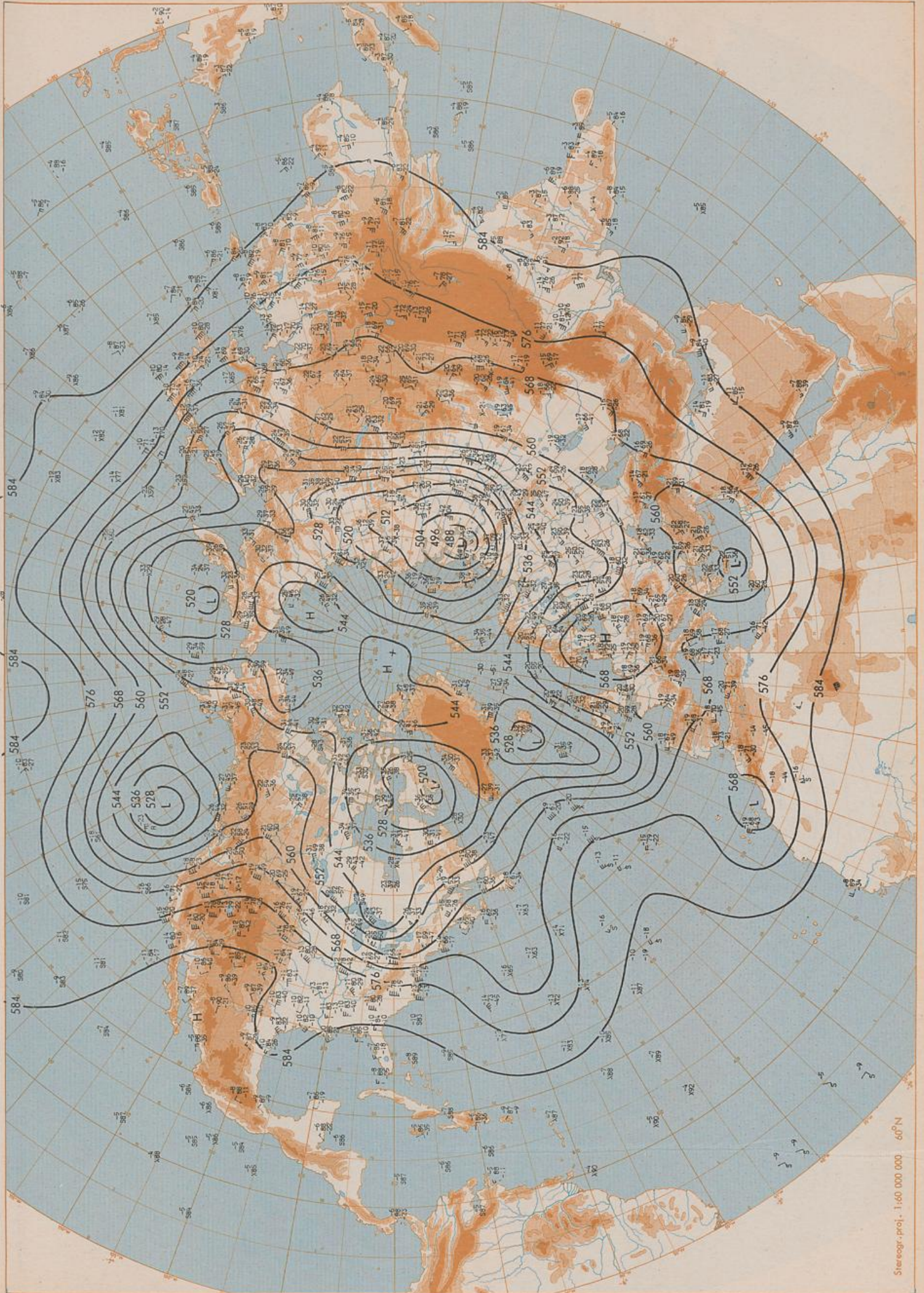
Stereogr.-proj., 1:30 000 000 60°N

Surface chart 12 UTC



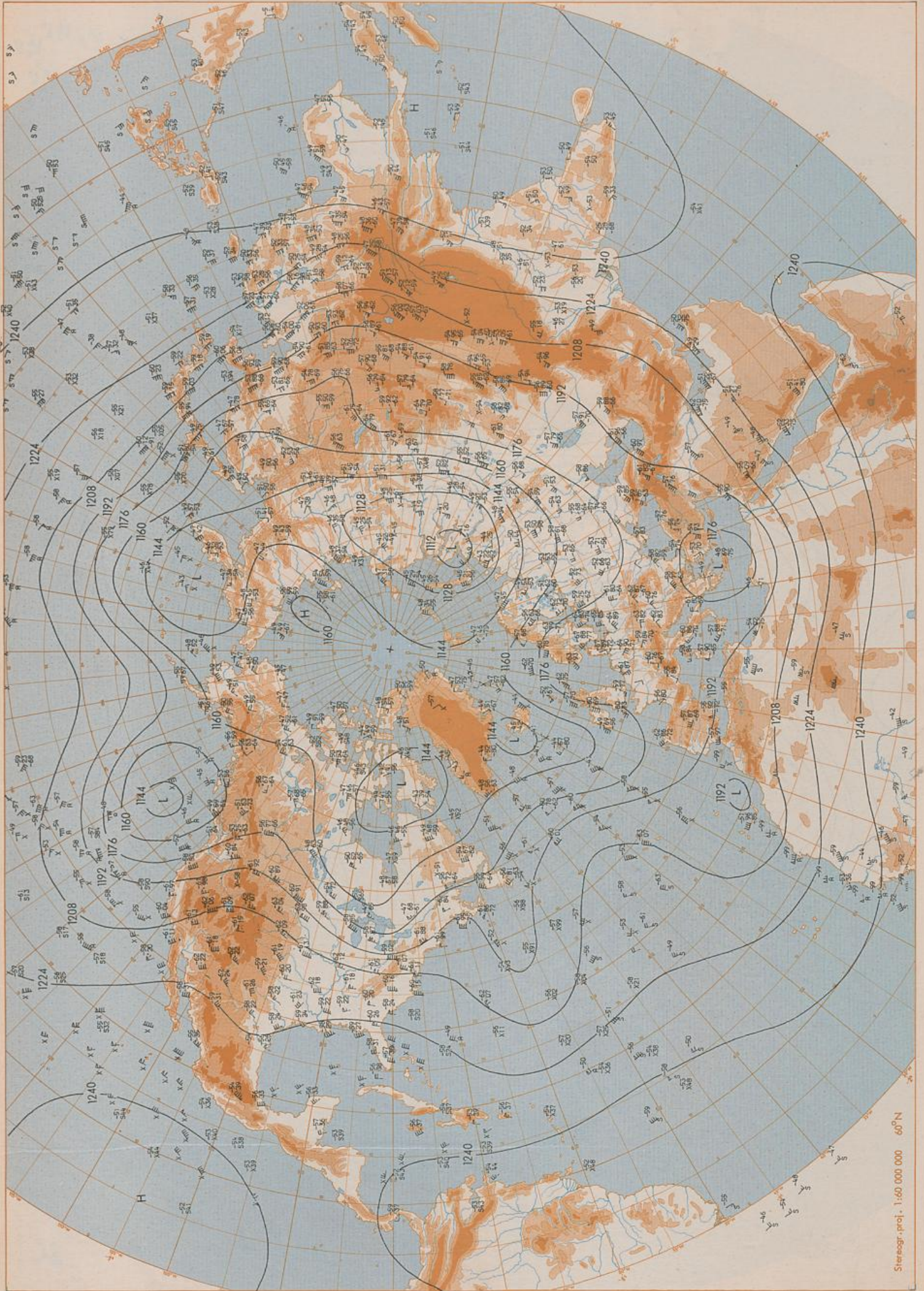
Surface chart 00 UTC

Stereogr.-proj. 1:60 000 000 40°N

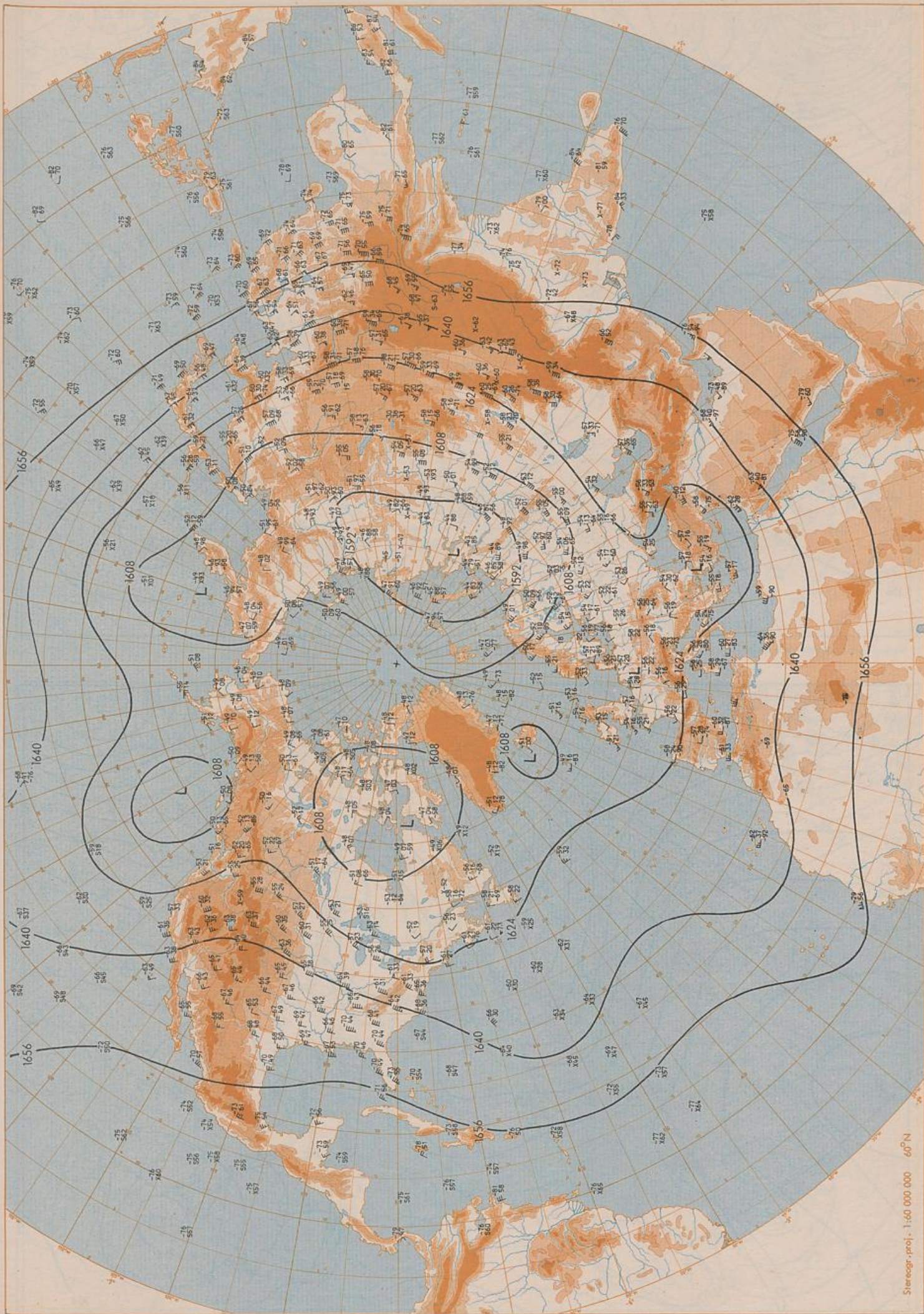


500 hPa 00 UTC

Stereogr. proj. 1:60 000 000 60°N

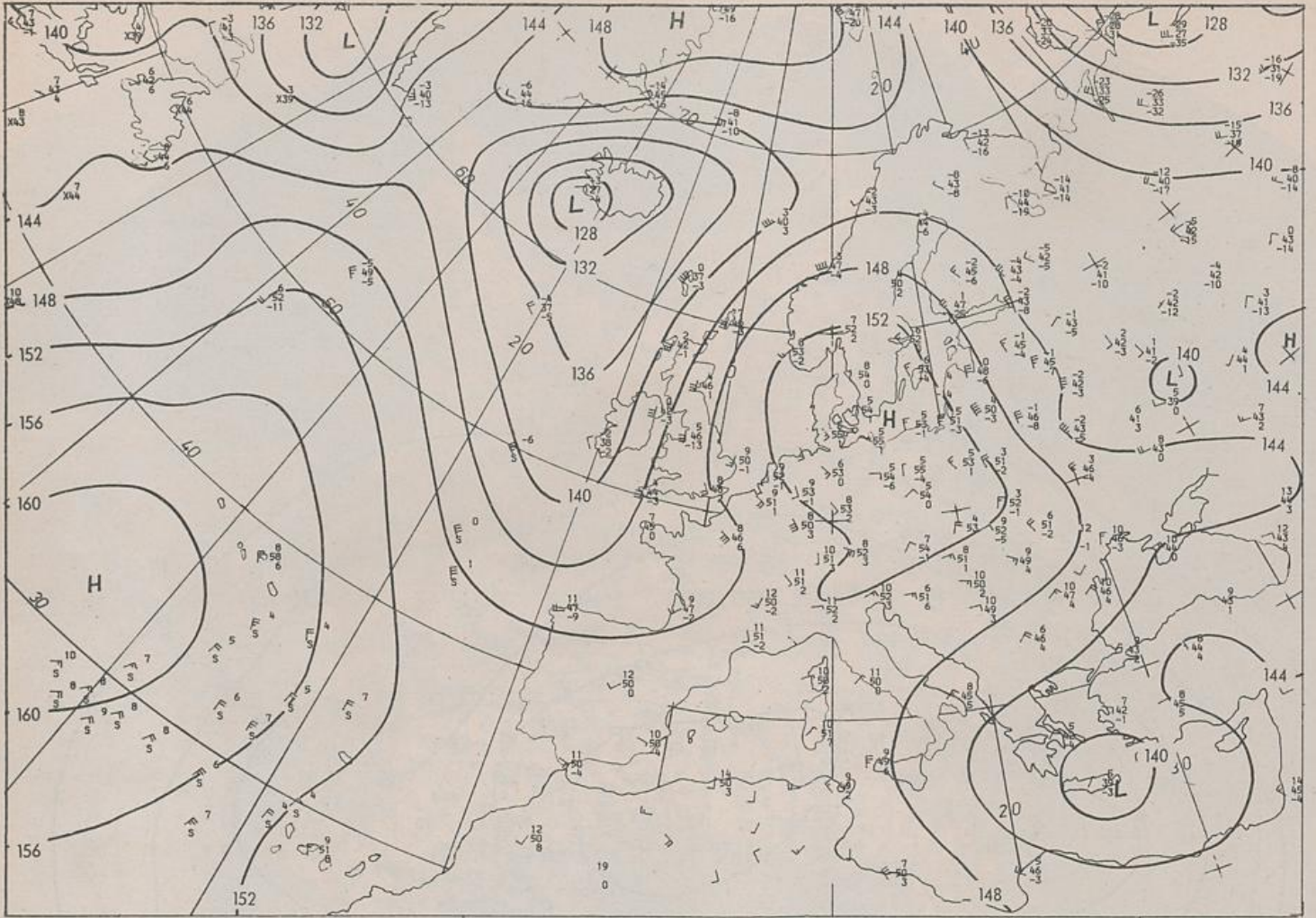


200 hPa 00 UTC



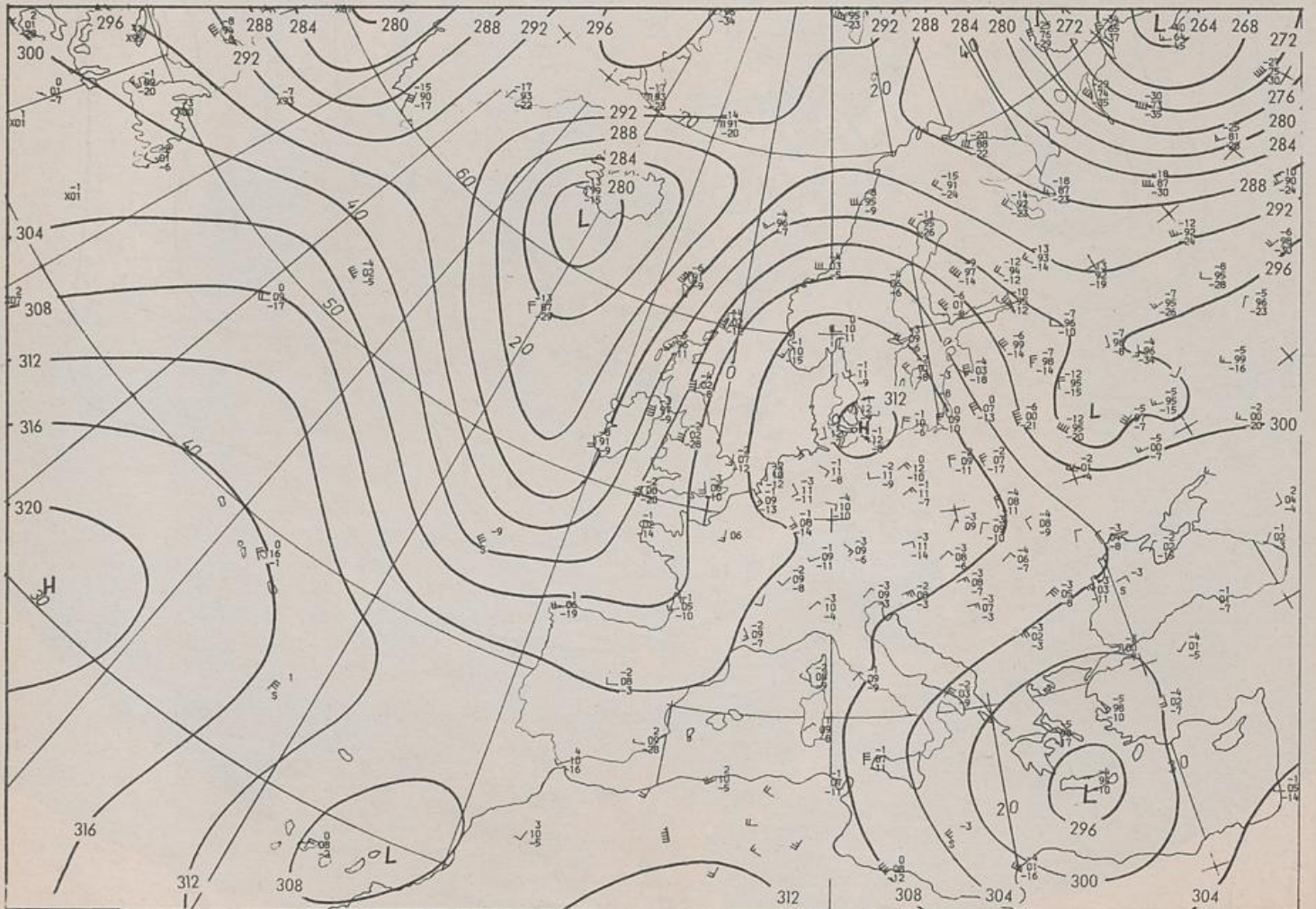
100 hPa 00 UTC

2.05.1986

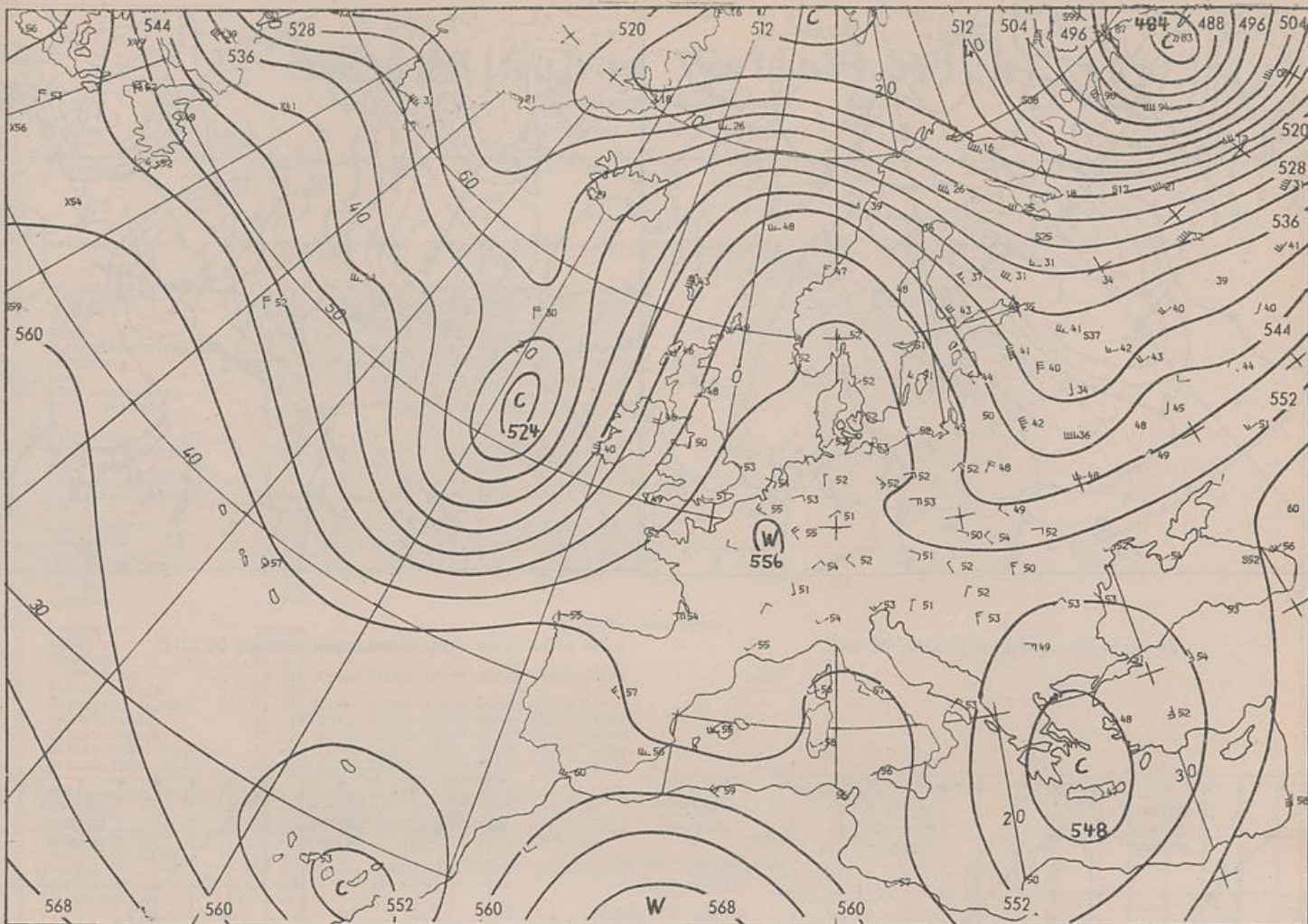


Stereogr. proj. 1:30 000 000 in 60°N

850 hPa 00 UTC

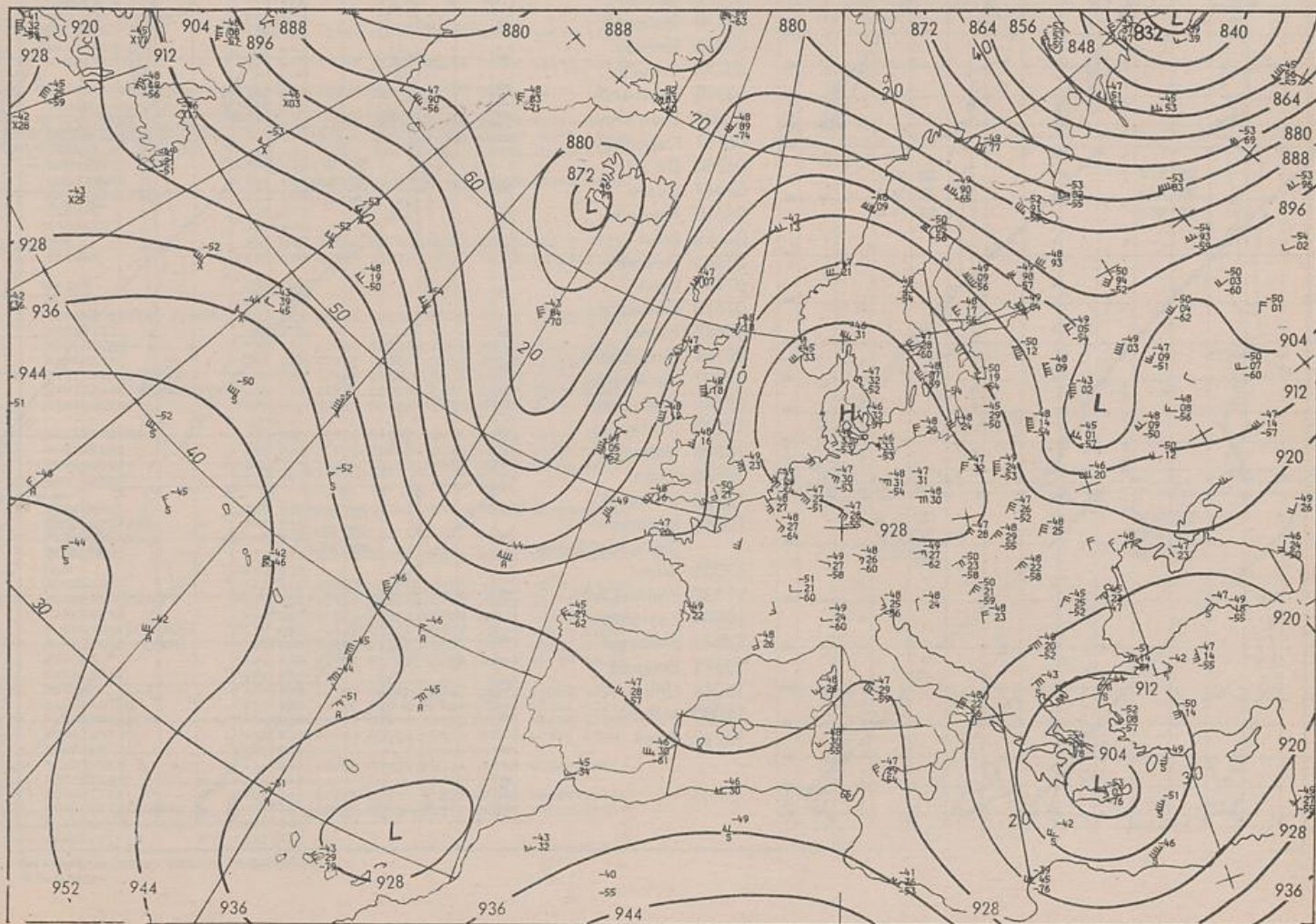


700 hPa 00 UTC

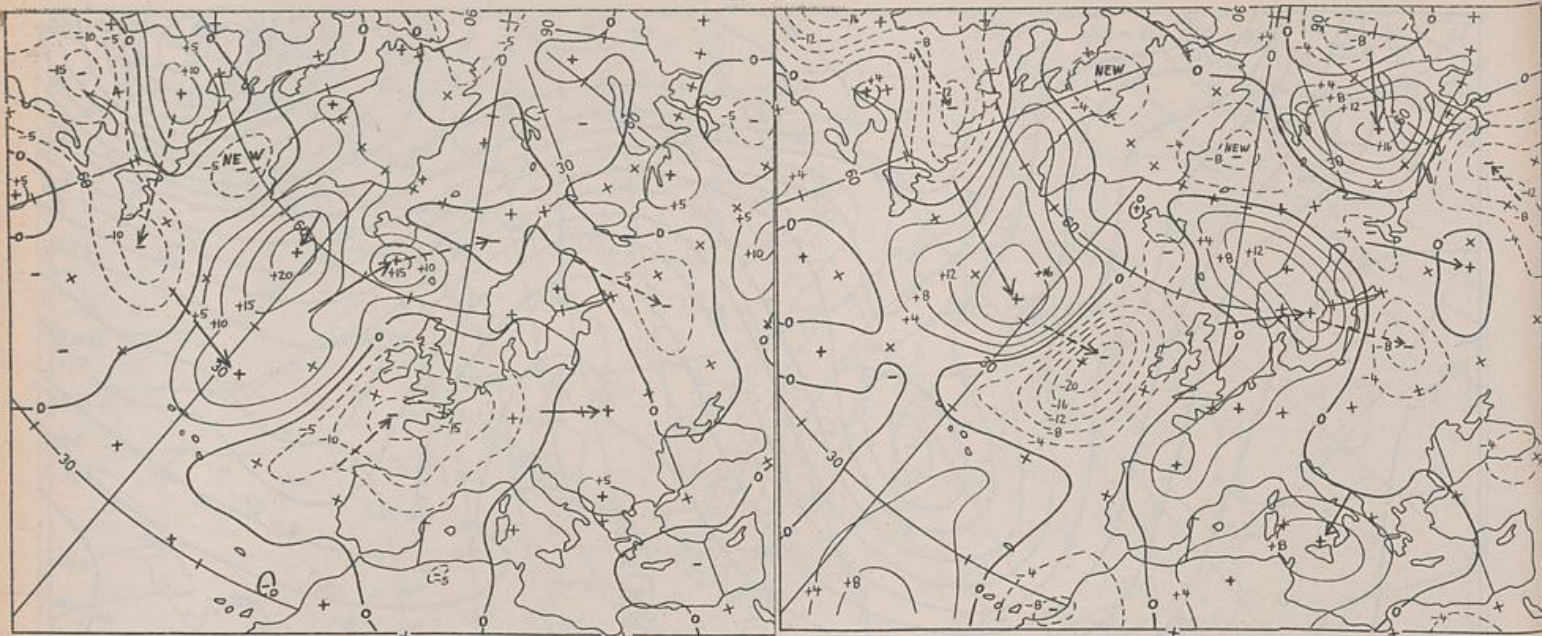


Stereogr. proj. 1:30 000 000 in 60°N

500/1000 hPa 00 UTC



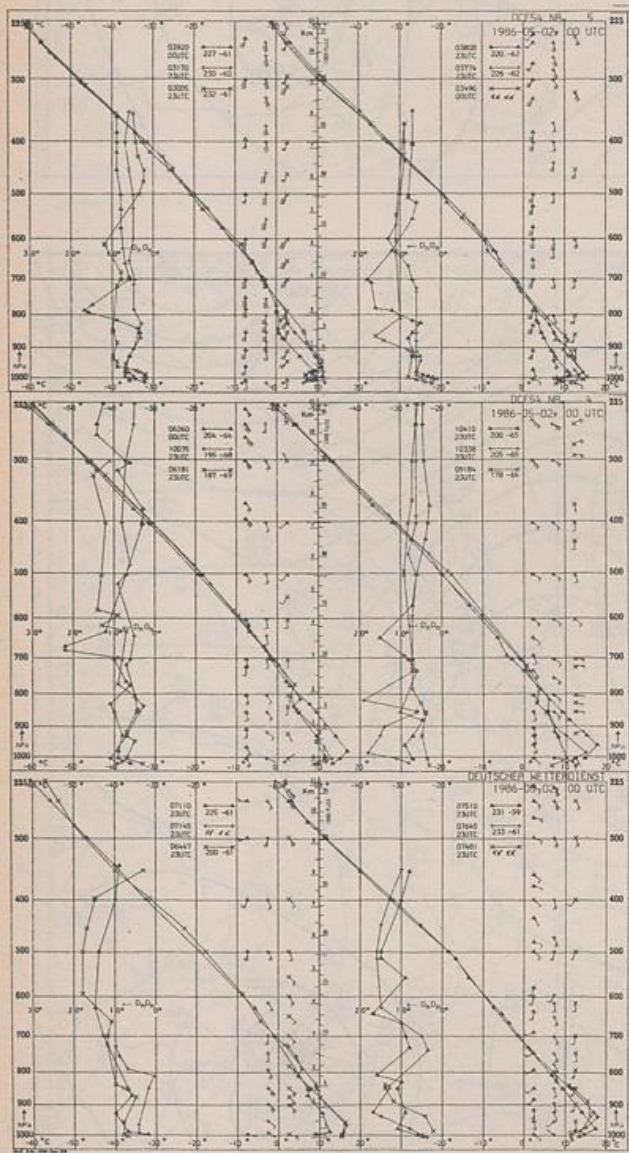
300 hPa 00 UTC



24 hr surface pressure change 00 UTC

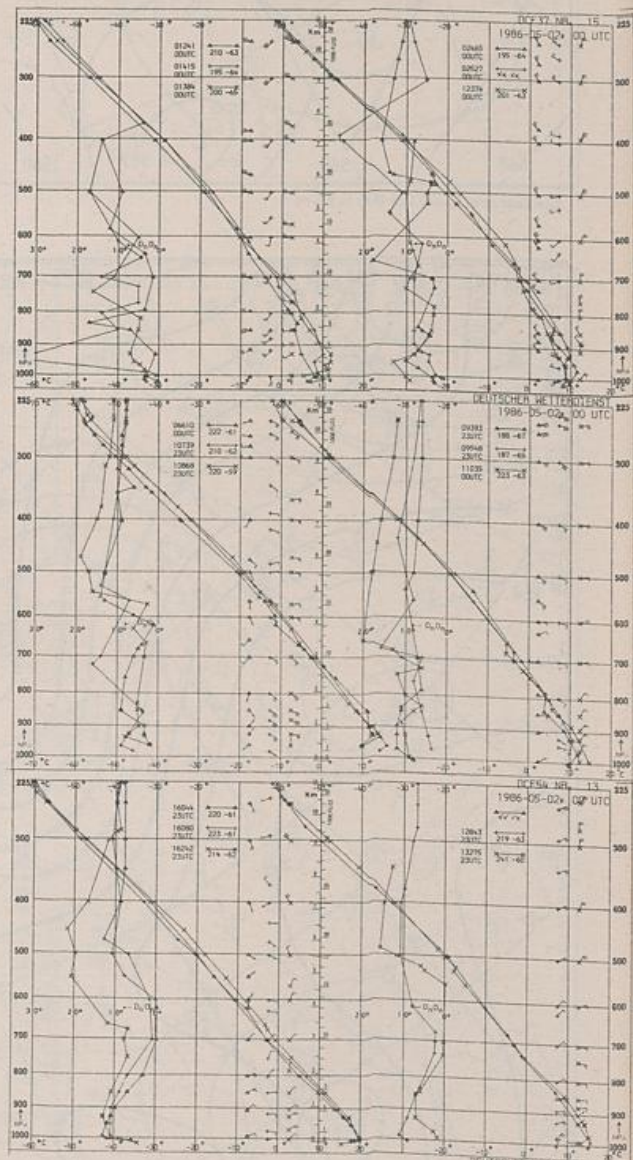
Stereogr. proj. 1:60 000 000

24 hr thickness change 00 UTC



Aerological Diagrams 00 GMT

- 01241 Orland
- 01384 Oslo
- 01415 Stavanger
- 02465 Stockholm
- 02527 Goteborg
- 03005 Lerwick
- 03170 Shanwell
- 03496 Hemsby
- 03774 Crawley
- 03808 Camborne
- 03920 Long Kesh
- 06181 Kobenhavn
- 06260 De Bilt
- 06447 Uccle
- 06610 Payeme
- 07110 Brest
- 07145 Trappes
- 07481 Lyon
- 07510 Bordeaux
- 07645 Nimes
- 09184 Greifswald
- 09393 Lindenberg
- 09548 Meiningen
- 10035 Schleswig
- 10338 Hannover
- 10410 Essen
- 10739 Stuttgart
- 10868 München-Oberschleißheim
- 11035 Wien
- 11520 Praha-Libus
- 12374 Legionowo
- 12843 Budapest
- 13275 Beograd
- 16044 Udine
- 16080 Milano
- 16242 Roma



Europäischer Wetterbericht

Amblatt des Deutschen Wetterdienstes

Beilage 2

AEROLOGISCHE WETTERMELDUNGEN

JAHRGANG 11		HOEHENBEOBACHTUNGEN VOM FREITAG , DEN 2. MAI 1986												NUMMER 122				
STATION YGG	SCHLESWIG			HANNOVER			ESSEN			STUTT GART			MUENCHEN			BERLIN		
	0212			0212			0212			0212			0212			0212		
	HHHH	TTTTD	DDFFF	HHHH	TTTTD	DDFFF	HHHH	TTTTD	DDFFF	HHHH	TTTTD	DDFFF	HHHH	TTTTD	DDFFF	HHHH	TTTTD	DDFFF
	PPP	TTTTD	DDFFF	PPP	TTTTD	DDFFF	PPP	TTTTD	DDFFF	PPP	TTTTD	DDFFF	PPP	TTTTD	DDFFF	PPP	TTTTD	DDFFF
HPA																		
10	3099	-46	13 05	3095	-46		3089	-51	16 10	3098	-46	16 07	3095	-49	32 07	3113	-37	12 09
20	2645	-53	10 21	2644	-54		2642	-55	10 10	2646	-54	10 09	2644	-53	10 07	2654	-50	08 12
30	2385	-55	07 08	2384	-55		2384	-57	08 09	2386	-55	11 15	2384	-55	10 09	2391	-54	08 08
50	2059	-56	11 06	2060	-57		2060	-57	10 04	2061	-57	08 06	2059	-57	09 05	2065	-55	08 04
70	1845	-56	36 03	1847	-57		1847	-57	16 03	1848	-58	22 01	1847	-57	21 02	1850	-56	09 04
100	1619	-56	21 04	1620	-56		1621	-57	21 05	1622	-56	21 03	1621	-56	17 02	1623	-56	12 03
150	1362	-58	17 06	1363	-57		1364	-56	16 09	1363	-56	15 10	1364	-56	16 07	1366	-58	-73 09 03
200	1185	-67 -75	15 22	1185	-64 -70		1183	-62 -70	15 14	1181	-58 -67	14 16	1182	-59 -68	14 13	1187	-65 -78	12 15
250	1047	-56 -65	14 37	1046	-56 -62		1043	-57 -66	15 41	1040	-55 -64	17 18	1043	-58 -67	16 21	1049	-58 -71	12 26
300	0928	-47 -56	15 34	0927	-47 -54		0925	-49 -59	15 34	0922	-47 -57	16 26	0925	-49 -58	14 32	0932	-48 -61	13 26
400	0732	-31 -42	16 28	0730	-31 -40		0730	-32 -44	16 15	0726	-35 -45	17 23	0729	-32 -46	16 18	0735	-32 -44	15 22
500	0569	-18 -30	17 31	0568	-19 -31		0568	-19 -32	16 18	0566	-20 -33	09 18	0568	-19 -34	16 13	0573	-18 -31	14 19
700	0309	-2 -11	17 13	0308	-1 -11		0307	-2 -10	16 14	0307	-1 -9	22 05	0308	-1 -9	21 10	0311	0 -10	13 14
850	0152	7 -3	16 20	0151	8 -1		0149	9 4	14 19	0149	11 -1	17 03	0150	11 2	21 07	0153	8 -2	13 10
1000	0016	15 3	11 14	0015	18 5		0011			0011			0012			0018	17 -1	12 08
							007	-47	07 11				010	-49	32 07	004	-24	15 03
							008	-50					012		11 02	006	-30	
							010	-51	16 10				013		09 03	007		10 09
							013	-52	10 13				026	-54	11 08	008	-40	
	010	-46	13 05				018	-56		009	-45	15 10	039		07 09	009		14 06
	014	-48					021	-54		016		08 09	051		09 04	010	-37	
	017	-53					025	-57		021	-55		059	-58		011		11 11
	020	-53	10 21				034	-57	09 06	026	-54	11 10	064		13 01	012	-46	
	024	-54					042	-55		033	-56		070		21 02	014		12 15
	028		07 08				050	-57	10 04	038	-54	08 08	078	-57		018	-51	
	060		12 09				063	-58		045	-57		090	-57	23 02	018		09 13
	068		03 04				073	-56		045	-57		106	-56	13 02	019	-50	
	076	-57	31 02				100	-57	21 05	053		08 05	124	-57		047	-56	
	092	-56					121	-55	16 10	066		13 01	144	-56		047		07 04
	100	-56	21 04				130	-57		073	-58	22 01	152		16 07	051	-54	
	116		18 08	010	-46		160	-56	17 08	086	-55		200	-59 -68	14 13	060		11 04
	150	-58	17 06	160	-56	15 20	184	-61	15 20	086	-55		218	-61 -70	16 17	080		07 04
	156	-58		200	-62 -70	15 14	200	-62 -70	15 14	095	-57	23 03	244	-59 -68	16 21	098		12 03
	185	-66		215	-59 -68		241	-59 -68		107		19 02	299		14 32	100	-56	12 03
	194	-66 -74		250	-57 -66	15 41	317	-47 -57		145	-55		327	-45 -55		125		08 03
	200	-67 -75	15 22	330	-47 -57		444	-25 -37	16 10	160	-58		395	-33 -46		150	-58 -73	09 03
	250	-56 -65	14 37	530		16 22	530		16 22	174	-56 -65		430	-28 -45		163	-58 -72	
	341	-40 -50		600		17 15	600		17 15	223	-59 -68	16 14	452		17 13	166		12 06
	452	-25 -35		623	-4 -19		623	-4 -19		387	-37 -48		538	-14 -29	14 14	180	-61 -74	
	496	-18 -30		640		14 21	640		14 21	558	-13 -24		558	-13 -24		190	-66 -79	12 13
	500	-18 -30	17 31	653	-4 -13		653	-4 -13		500	-20 -33	09 18	600		16 08	213	-64 -77	
	555	-12 -23		690		15 11	690		15 11	550		07 05	600		16 08	257		12 27
	600		17 20	750	2 -5	17 20	750	2 -5	17 20	588	-12 -18		623	-7 -17	16 08	298	-49 -62	
	650		17 10	800		16 27	800		16 27	600		15 11	676	-4 -12		394		15 22
	775	4 -7		817	8 0		817	8 0		791		29 04	696		21 09	460	-23 -37	
	870	8 -2		834	7 4	14 22	834	7 4	14 22	791		29 04	732	2 -7		600		14 16
	910	9 -6		896	14 15		896	14 15		807		29 03	768	4 -5		627	-5 -16	
	911		14 23	925	16 6	13 14	925	16 6	13 14	807		29 03	800		22 11	800		13 11
	925	9 -1	14 22	992	18 5		992	18 5		850	11 -1	17 03	806		22 11	828	7 -3	
	000	15 3	11 14	996	23 10	11 10	996	23 10	11 10	878		16 06	862		20 06	866	7 -4	
	014	18 3	10 12							900	12 6		890	12 8		890	8 -6	
										925	14 7	13 08	907		11 06	911		12 09
										943		12 08	925	15 9	09 07	925	11 -4	12 09
										965	18 8		947	16 9	08 07	015	19 1	12 07
										977	20 9	06 02	959	18 10	12 05			
TROPO-PAUSE	200	-67 -75	15 22	200	-64 -70		200	-62 -70	15 14	223	-59 -68	16 14	218	-61 -70	16 17	190	-66 -79	12 13
MAX-WIND																		
30/50	0326			0324			0324			0325			0325			0326		
50/100	0440			0440			0439			0439			0438			0442		
100/200	0434			0435			0438			0441			0439			0436		
200/500	0616			0617			0615			0615			0614			0614		
500/1000	0553			0553			0557			0555			0556			0555		

Höhenwinde

STATION YGG	SCHLESWIG 0218	HANNOVER 0218	ESSEN 0218	STUTT GART 0218	MUENCHEN 0218
PILOTEN GIPFEL- PUNKT	KN 28.5	DDFFF 30.9	DDFFF 30.9	DDFFF 30.9	DDFFF 30.9
	DDFFF 9 12	DDFFF 10 15	DDFFF 6 17	DDFFF 5 13	DDFFF 4 15
30.9		10 15	6 17	5 13	4 15
26.4	8 13	7 11	7 14	5 4	8 8
23.7	7 7	8 8	9 7	8 4	11 6
20.7	5 6	8 6	7 7	9 1	8 5
18.3	3 6	12 2	9 7	35 2	5 2
15.9	22 2	8 3	19 3	19 2	28 3
13.5	16 11	16 12	16 9	19 8	17 6
12.0	15 24	14 29	16 17	16 20	15 17
10.5	15 35	15 34	14 21	19 13	15 14
9.0	17 38	16 31	14 17	15 12	18 28
7.2	17 35	15 24	14 16	19 16	15 18
5.4	17 29	16 25	14 14	16 10	17 15
4.2	17 22	15 20	18 13	19 4	21 11
3.0	16 20	17 16	23 10	14 4	21 7
2.1	16 19	15 10	21 4	2 2	17 7
1.5	16 23	16 13			