

Europäischer Wetterbericht European Meteorological Bulletin Bulletin Météorologique Européen Boletín Meteorológico Europeo

Amtsblatt des Deutschen Wetterdienstes

Druck und Verlag: Deutscher Wetterdienst - Zentralamt - Frankfurter Straße 135, Postfach 10 04 65, 6050 Offenbach a.M., Tel.: (069) 8 06 20

Erscheint täglich
Bezugspreis monatlich 30.00 DM
zuzügl. Porto
Nachdruck nicht gestattet

Issued daily
Monthly price 30.00 DM
plus postage
All rights reserved

Publié quotidiennement
Prix mensuel 30.00 DM
plus port
Reproduction interdite

Se publica diariamente
Precio de suscripción mensual 30.00 DM
plus porte
Se prohíbe la reproducción



Jahrgang
Volume 12
Volume
Volumen

Freitag
Friday
Vendredi
Viernes

1.05.1987

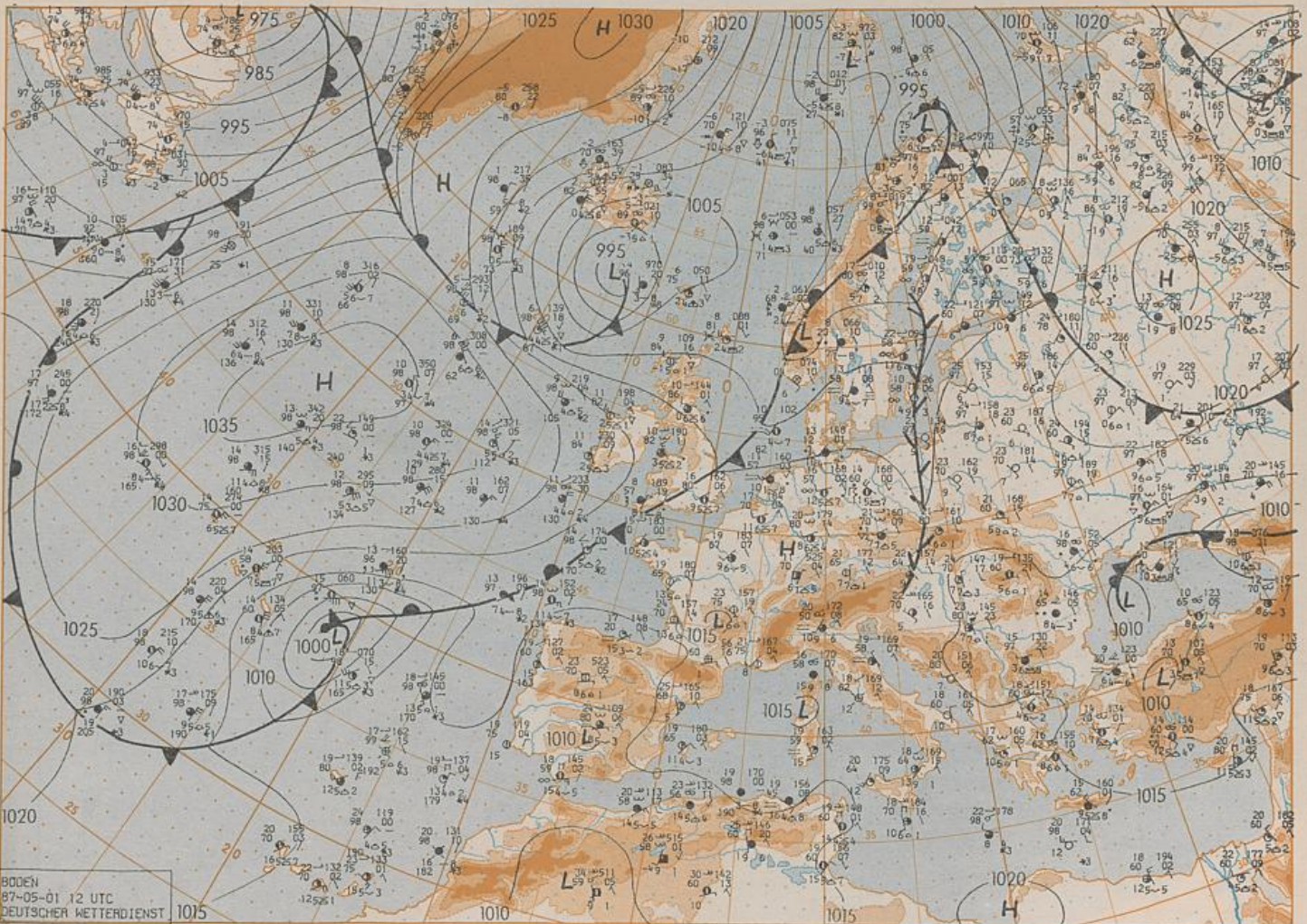
Nummer
Number 121
Número
Número

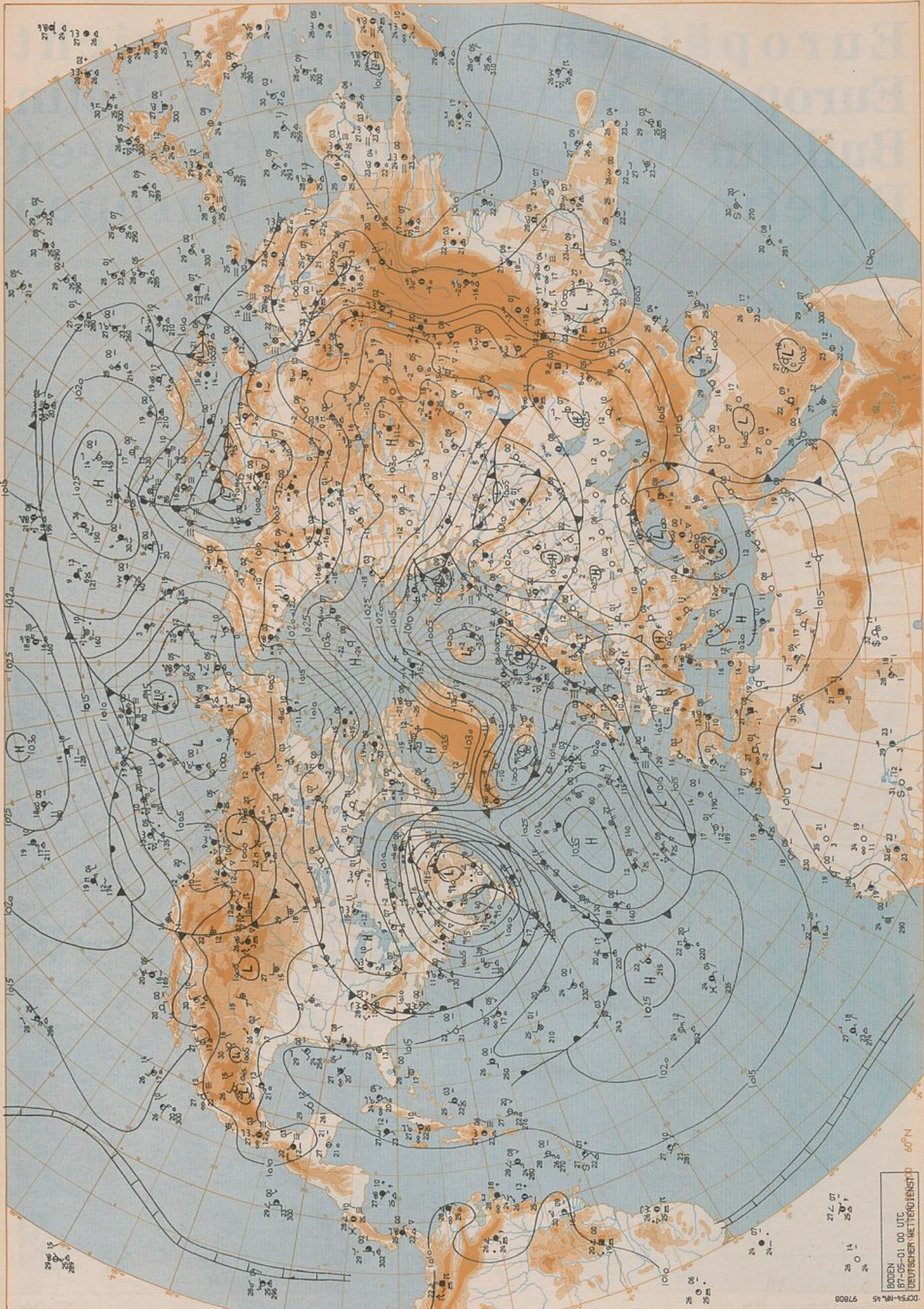
Inhalt
Bodenwetterkarte 12 UTC
Bodenwetterkarte Nordhemisphäre 00 UTC
500 hPa-Fläche Nordhemisphäre 00 UTC
200 hPa-Fläche Nordhemisphäre 00 UTC
100 hPa-Fläche Nordhemisphäre 00 UTC
850 hPa 00 UTC, 700 hPa 00 UTC
Relative Topographie 500/1000 hPa 00 UTC
300 hPa 00 UTC
24tdg Bodendruckänderung 00 UTC
24tdg Änderung relative Topographie
500/1000 hPa 00 UTC
Aerologische Diagramme 00 UTC

Content
Surface chart 12 UTC
Surface chart northern hemisphere 00 UTC
500 hPa surface northern hemisphere 00 UTC
200 hPa surface northern hemisphere 00 UTC
100 hPa surface northern hemisphere 00 UTC
850 hPa 00 UTC, 700 hPa 00 UTC
Thickness chart 500/1000 hPa 00 UTC
300 hPa 00 UTC
24 hr surface pressure change 00 UTC
24 hr thickness change
500/1000 hPa 00 UTC
Aerological diagrams 00 UTC

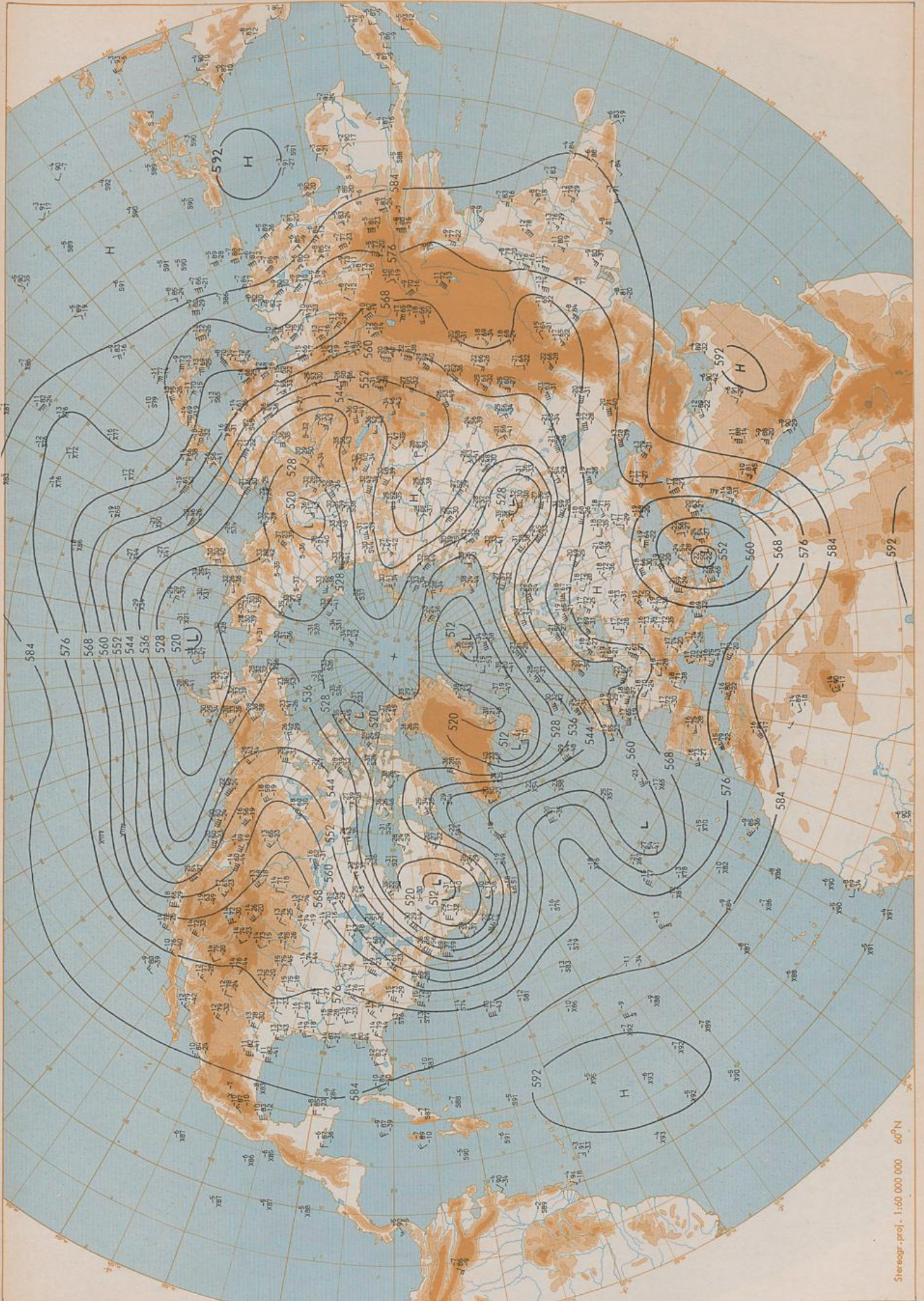
Contenu
Carte de surface à 12 UTC
Carte de surface sur l'hémisphère nord à 00 UTC
Surface 500 hPa sur l'hémisphère nord à 00 UTC
Surface 200 hPa sur l'hémisphère nord à 00 UTC
Surface 100 hPa sur l'hémisphère nord à 00 UTC
850 hPa 00 UTC, 700 hPa 00 UTC
Carte d'épaisseur 500/1000 hPa 00 UTC
300 hPa 00 UTC
Variations de pression en 24 h (niveau mer)
en hPa à 00 UTC
Variations d'épaisseur 500/1000 hPa
en 24 h 00 UTC
Diagrammes aérologiques 00 UTC

Contenido
Análisis en superficie a las 12 UTC
Análisis en superficie hemisferio norte a las 00 UTC
Topografía de la superficie de 500 hPa hemisferio norte a las 00 UTC
Topografía de la superficie de 200 hPa hemisferio norte a las 00 UTC
Topografía de la superficie de 100 hPa hemisferio norte a las 00 UTC
850 hPa 00 UTC, 700 hPa 00 UTC
Relativa 500/1000 hPa 00 UTC
300 hPa 00 UTC
Variación de la presión del suelo 24 h en hPa a las 00 UTC
Variación de espesor 500/1000 hPa en 24 h 00 UTC
Diagramas aerológicos 00 UTC





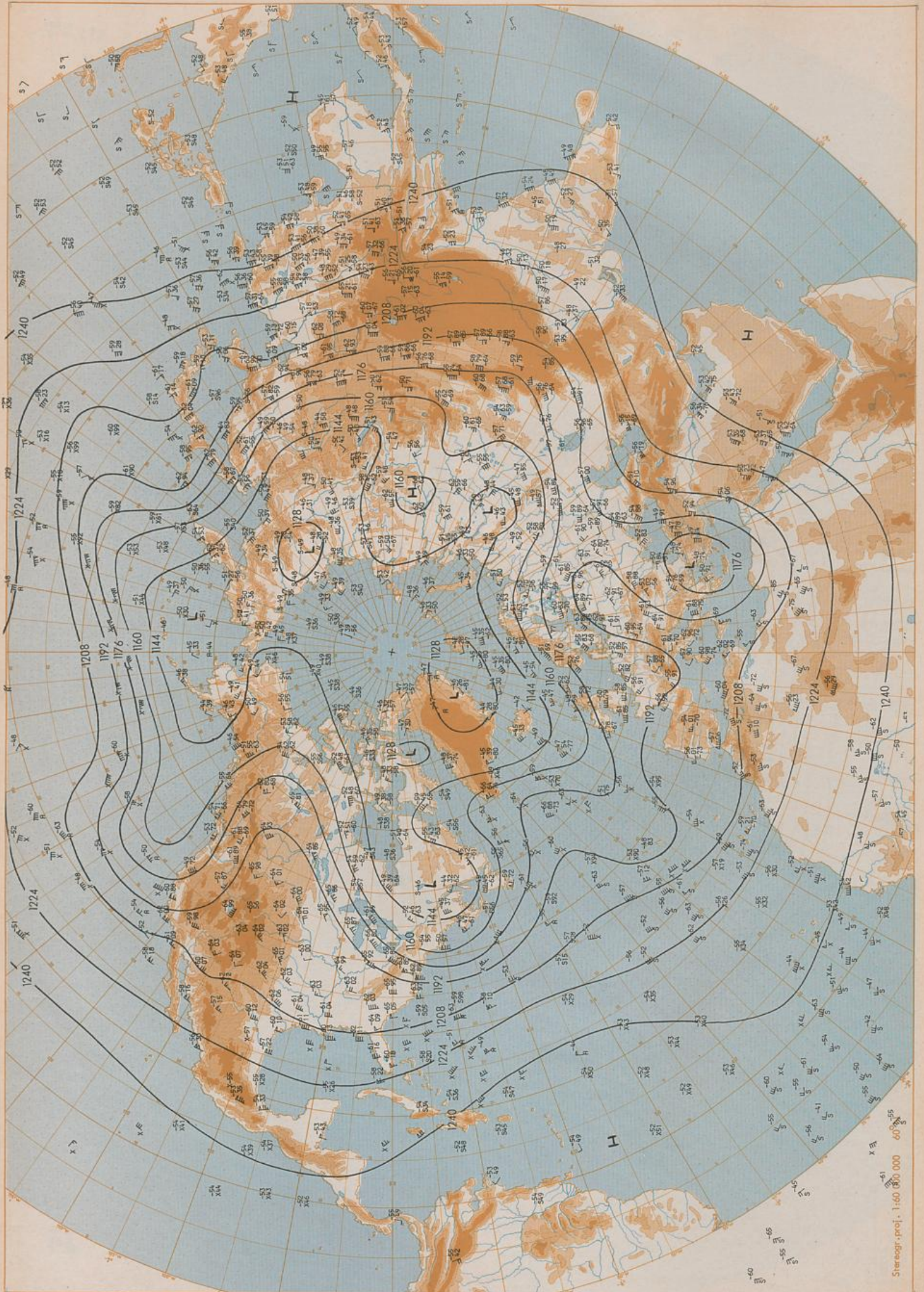
BODEN
 87-05-01.00 UTC
 DEUTSCHER METEOROLOGENST.
 DCF54-NR. 45
 97808



500 hPa 00 UTC

Stereogr. proj. 1:60 000 000 60°N

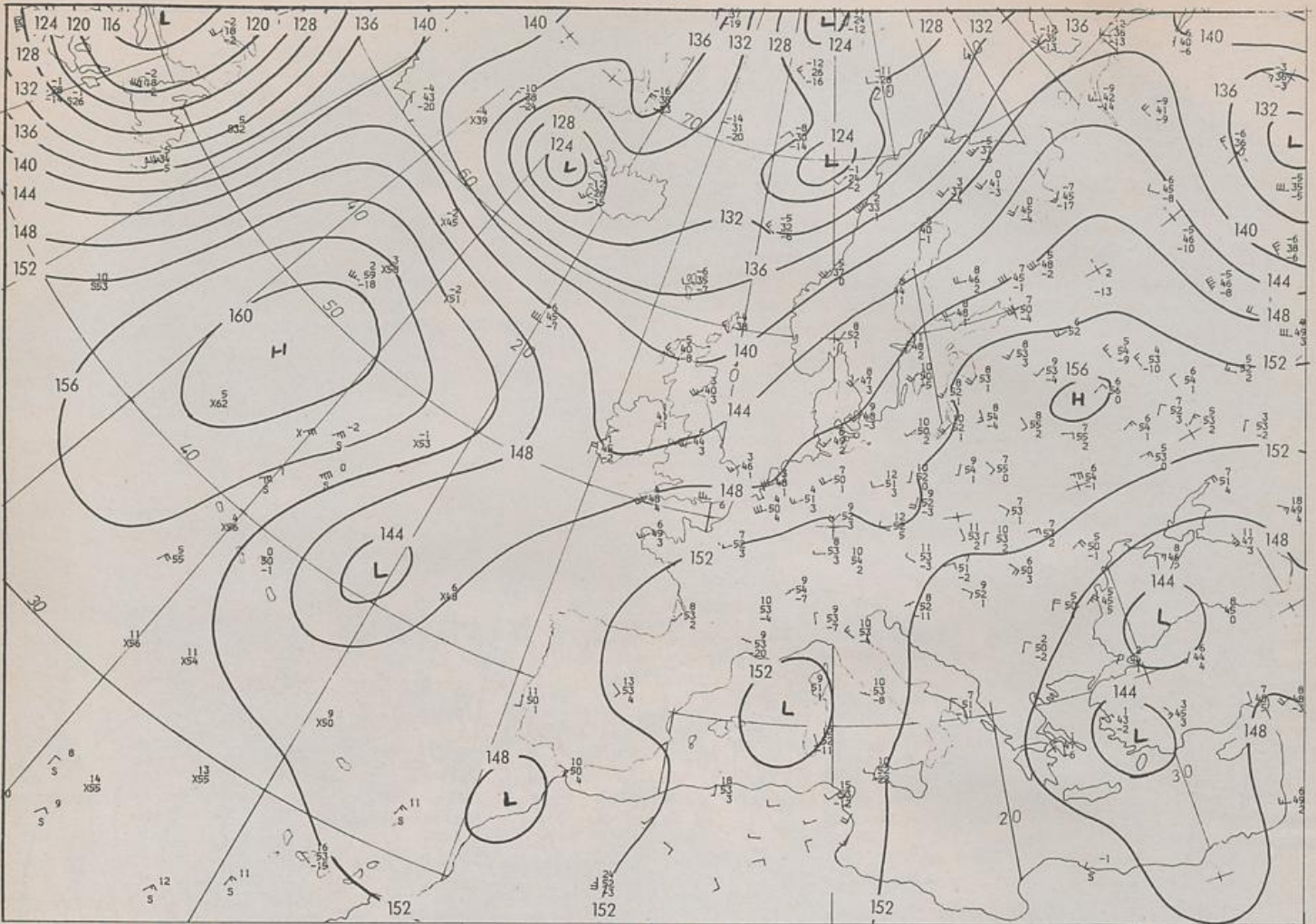
1.05.1987



200 hPa 00 UTC

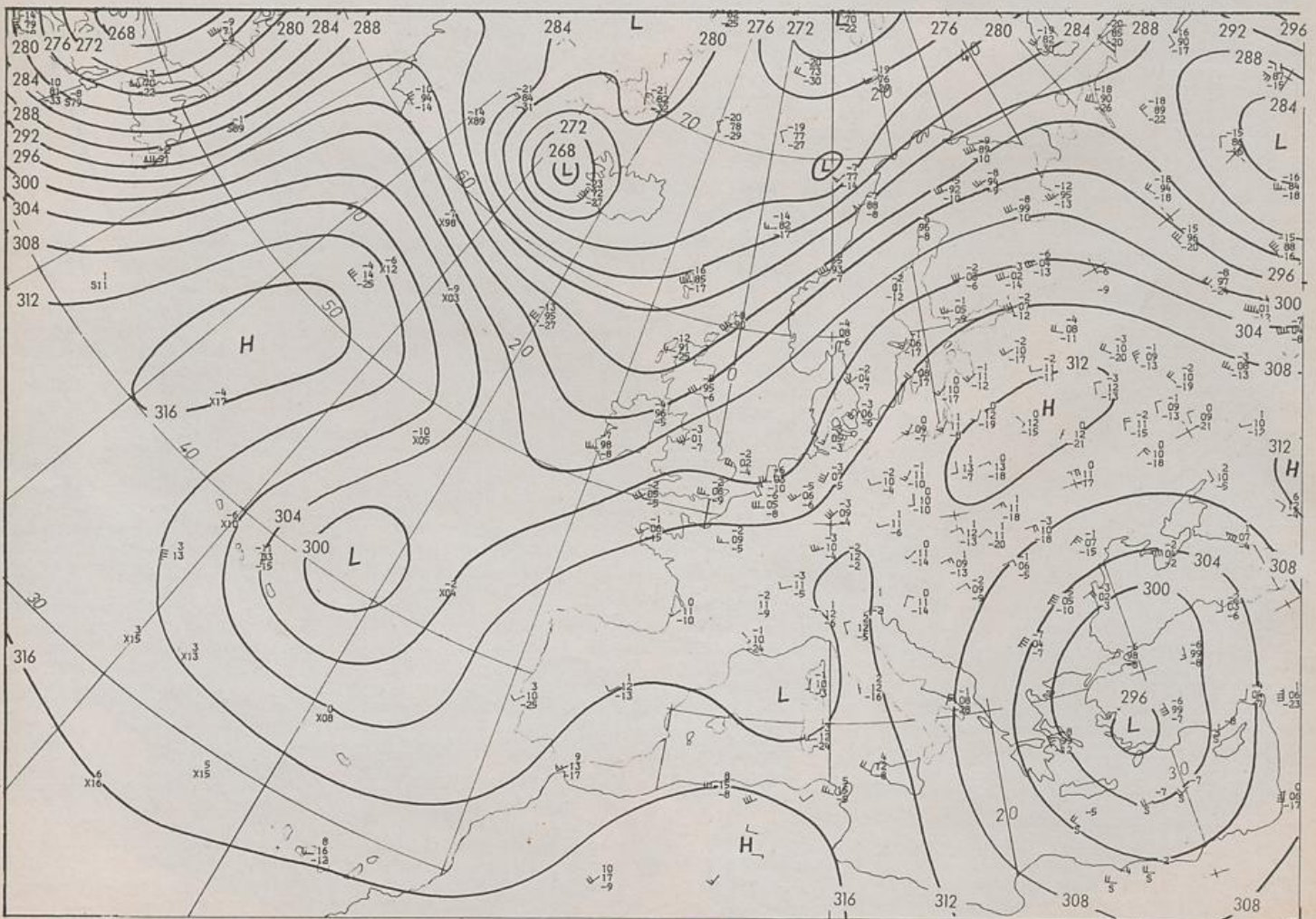
Stereogr. proj. 1:40 000 000

1.05.1987

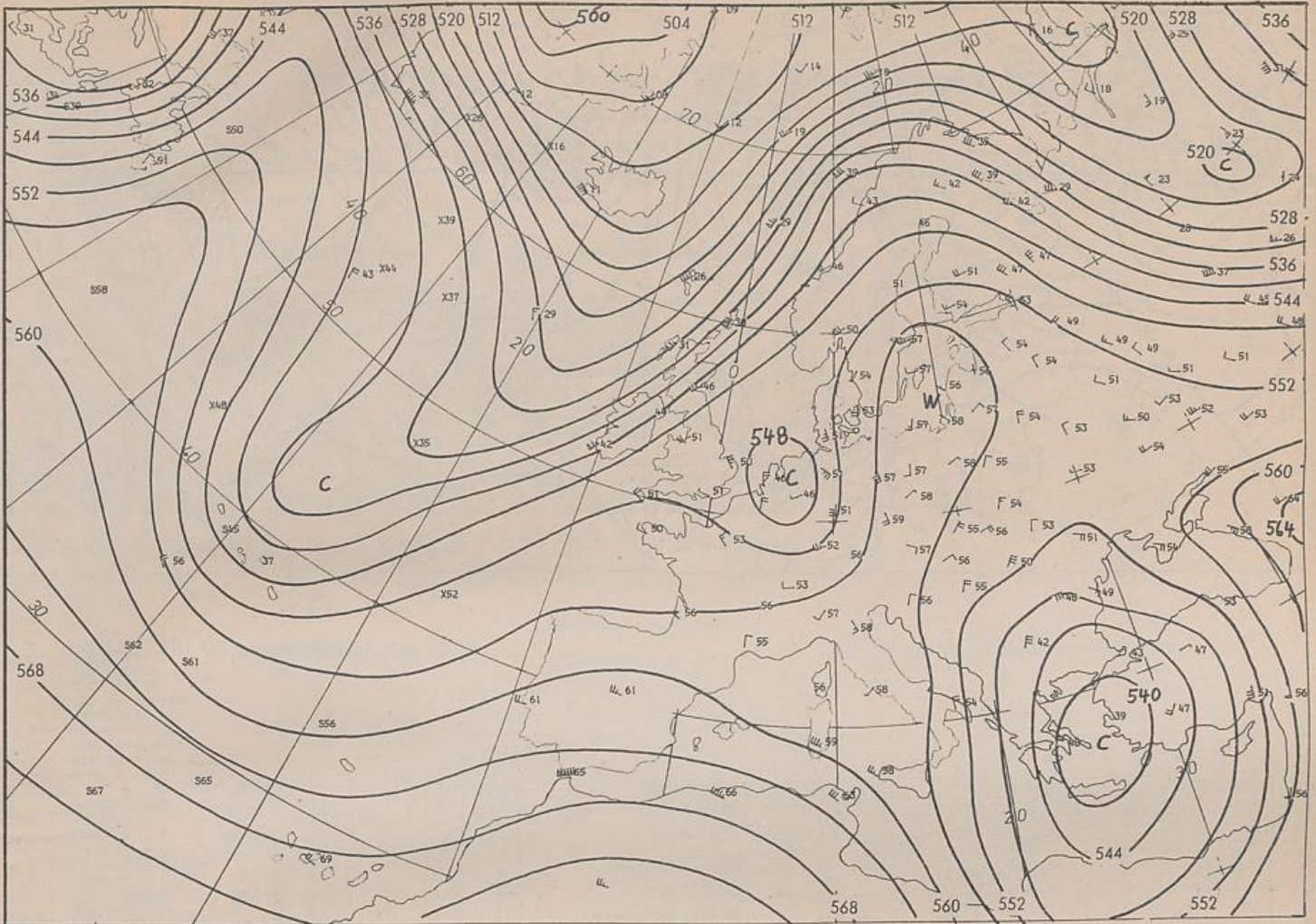


Stereogr. proj. 1:30 000 000 in 60°N

850 hPa 00 UTC

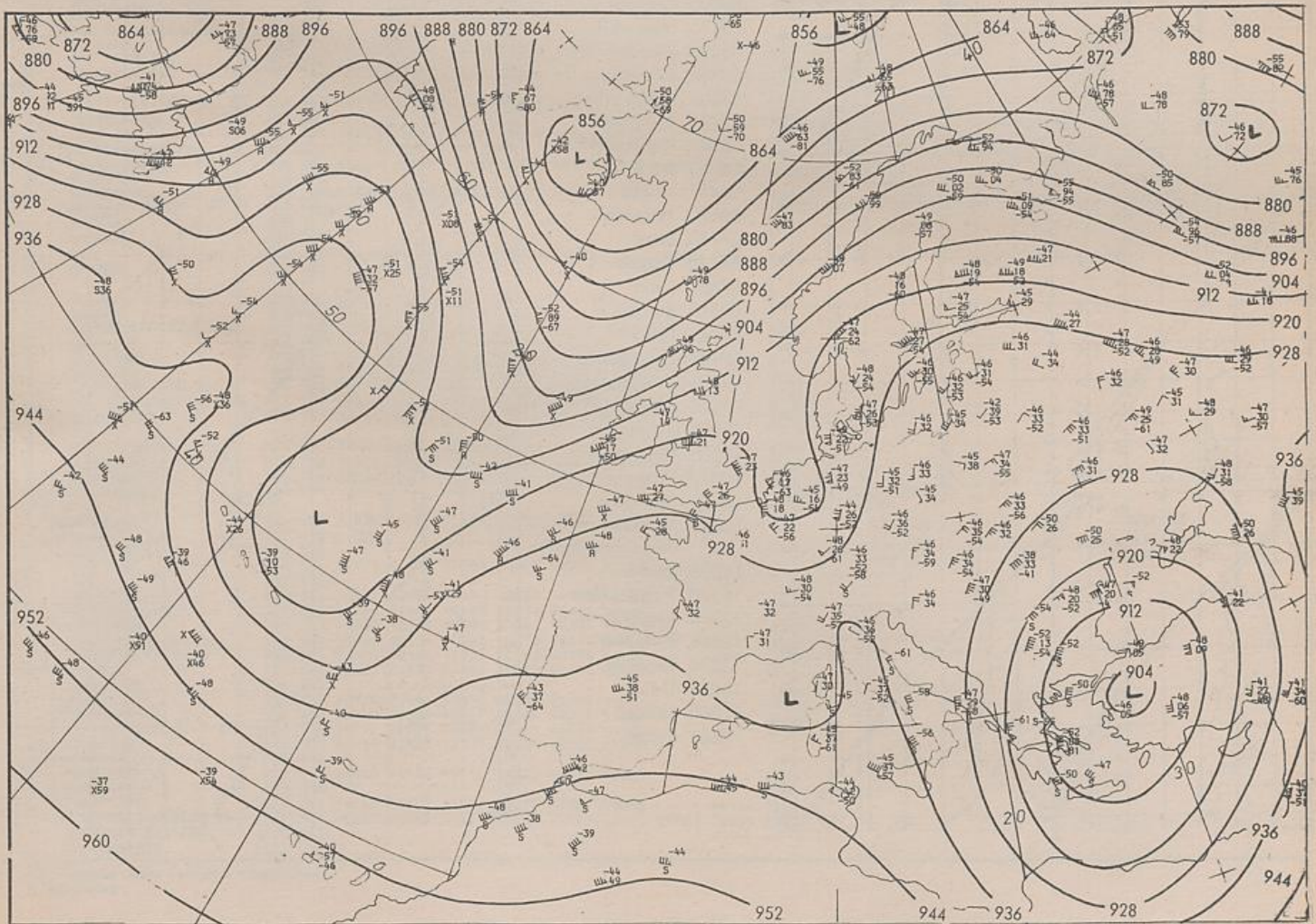


700 hPa 00 UTC



Stereogr. proj. 1:30 000 000 in 60°N

500/1000 hPa 00 UTC



300 hPa 00 UTC

