

Europäischer Wetterbericht European Meteorological Bulletin Bulletin Météorologique Européen Boletín Meteorológico Europeo

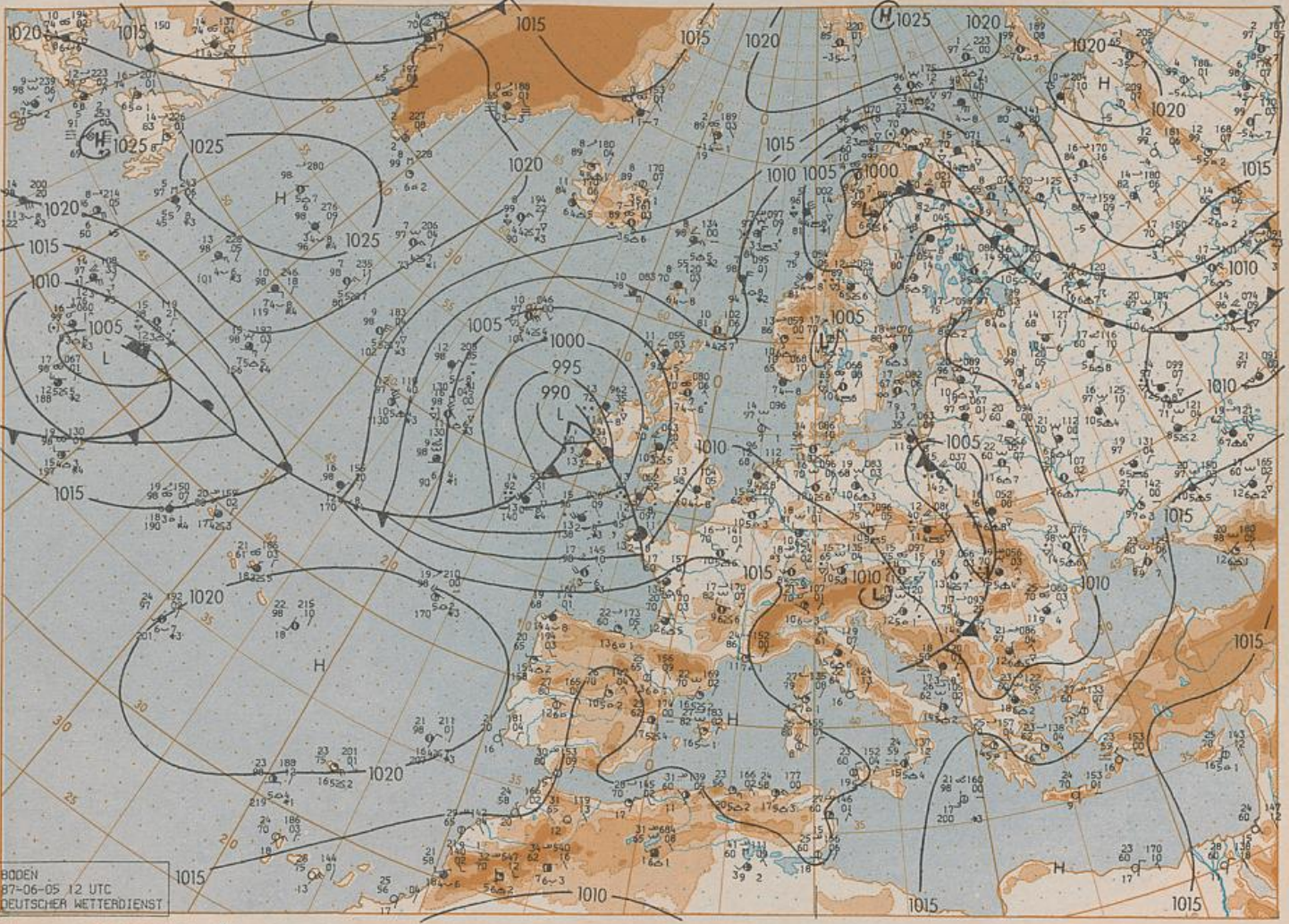
Amtsblatt des Deutschen Wetterdienstes

Druck und Verlag: Deutscher Wetterdienst - Zentralamt - Frankfurter Straße 135, Postfach 10 04 65, 6050 Offenbach a.M., Tel.: (069) 8 06 20

Erscheint täglich	Issued daily	Publié quotidiennement	Se publica diariamente
Bezugspreis monatlich 30,00 DM zuzügl. Porto	Monthly price 30,00 DM plus postage	Prix mensuel 30,00 DM plus port	Precio de suscripción mensual 30,00 DM plus porte
Nachdruck nicht gestattet	All rights reserved	Reproduction interdite	Se prohíbe la reproducción

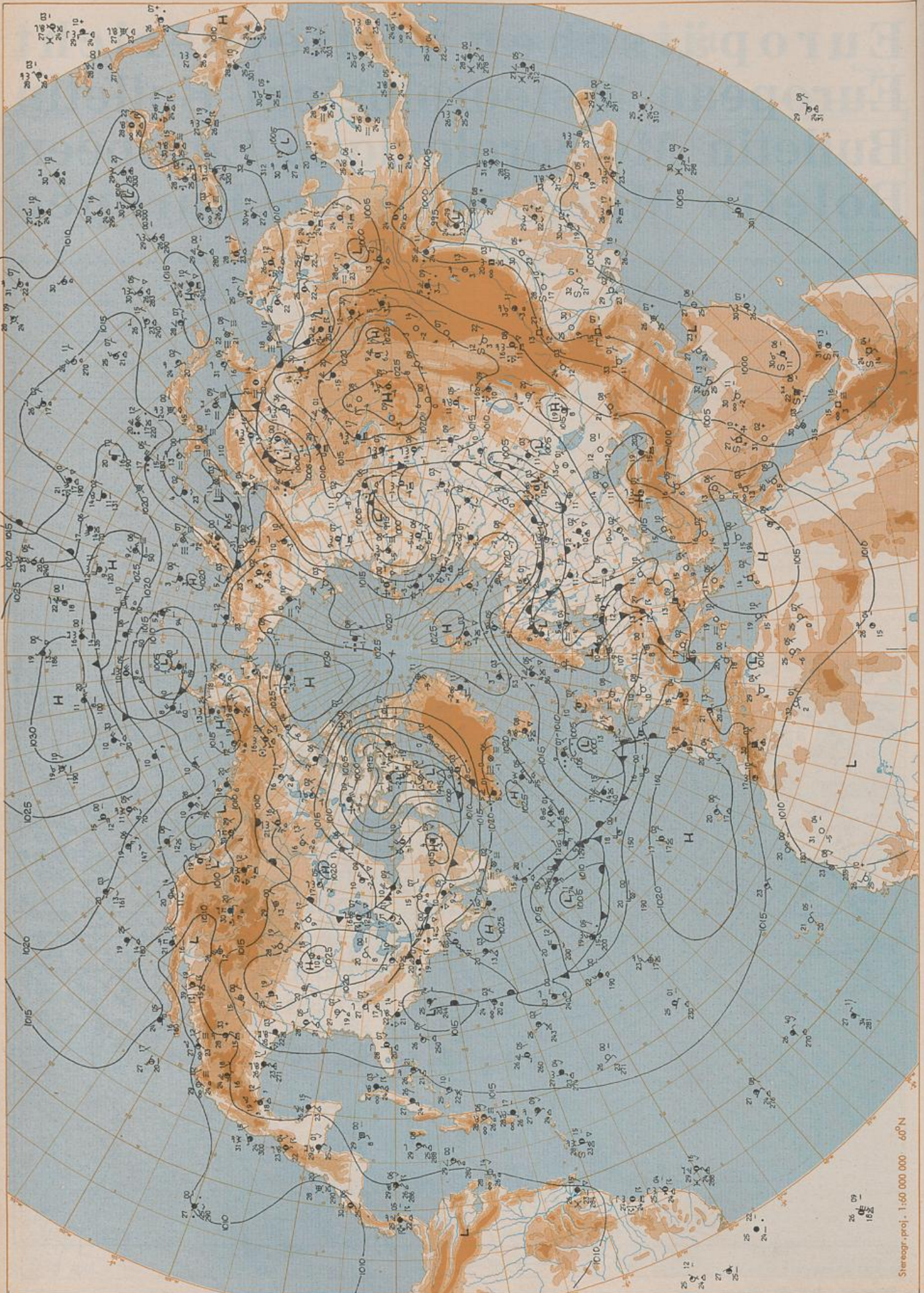
Jahrgang Volume Volume Volumen	12	Freitag Friday Vendredi Viernes	5.06.1987	Nummer Number Número	156
---	----	--	-----------	----------------------------	-----

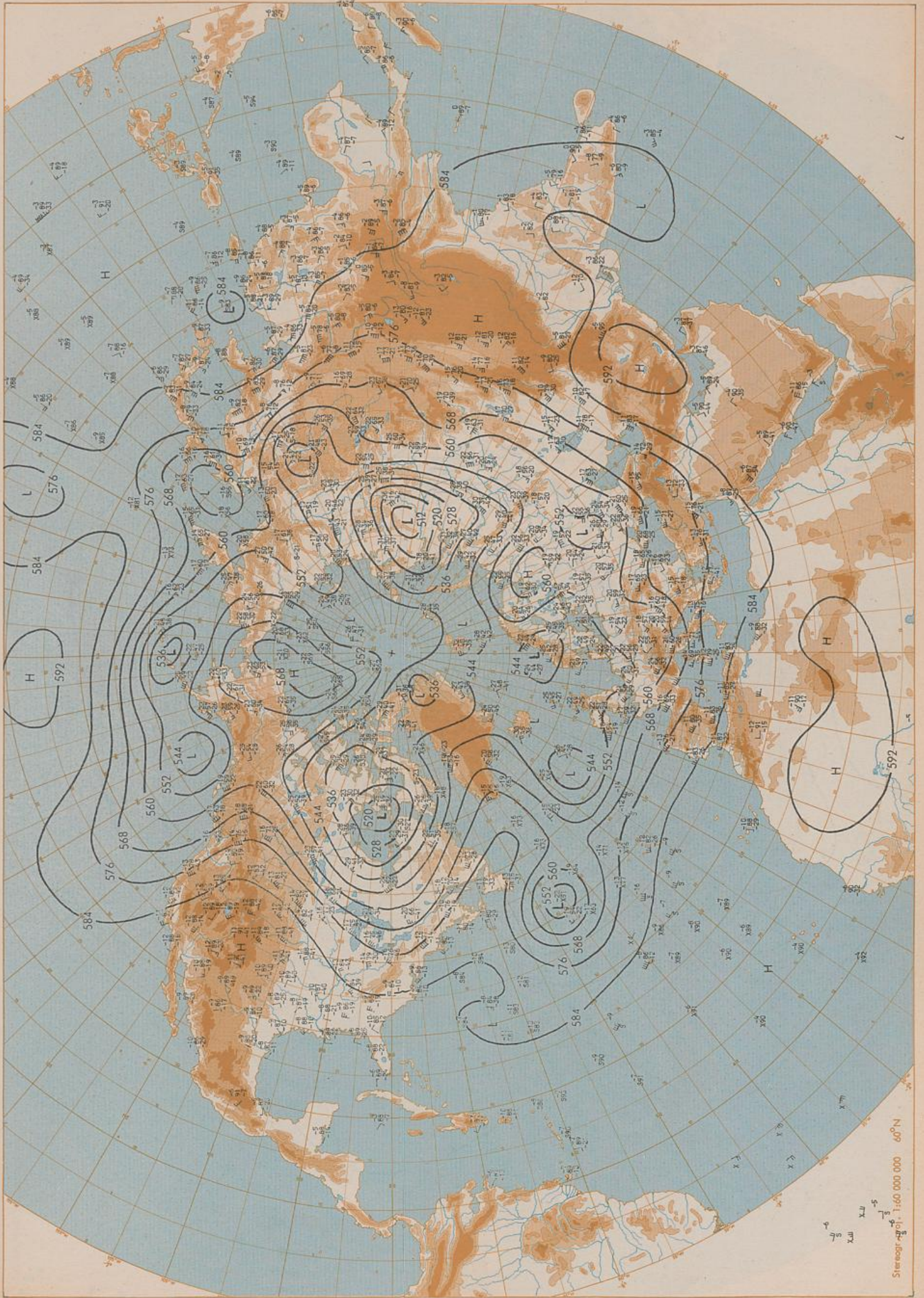
Inhalt	Contant	Contenu	Contenido
Bodenwetterkarte 12 UTC	Surface chart 12 UTC	Carte de surface à 12 UTC	Análisis en superficie a las 12 UTC
Bodenwetterkarte Nordhemisphäre 00 UTC	Surface chart northern hemisphere 00 UTC	Carte de surface sur l'hémisphère nord à 00 UTC	Análisis en superficie hemisferio norte a los 00 UTC
500 hPa-Fläche Nordhemisphäre 00 UTC	500 hPa surface northern hemisphere 00 UTC	Surface 500 hPa sur l'hémisphère nord à 00 UTC	Topografía de la superficie de 500 hPa hemisferio norte a los 00 UTC
200 hPa-Fläche Nordhemisphäre 00 UTC	200 hPa surface northern hemisphere 00 UTC	Surface 200 hPa sur l'hémisphère nord à 00 UTC	Topografía de la superficie de 200 hPa hemisferio norte a los 00 UTC
100 hPa-Fläche Nordhemisphäre 00 UTC	100 hPa surface northern hemisphere 00 UTC	Surface 100 hPa sur l'hémisphère nord à 00 UTC	Topografía de la superficie de 100 hPa hemisferio norte a los 00 UTC
850 hPa 00 UTC, 700 hPa 00 UTC	Thickness chart 500/1000 hPa 00 UTC	Carte d'épaisseur 500/1000 hPa 00 UTC	Topografía de la superficie de 850 hPa hemisferio norte a los 00 UTC, 700 hPa 00 UTC
Relative Topographie 500/1000 hPa 00 UTC	24 hr surface pressure change 00 UTC	Variations de pression en 24 h (niveau mer) en hPa à 00 UTC	Relativa 500/1000 hPa 00 UTC
300 hPa 00 UTC	24 hr thickness change	Variations d'épaisseur 500/1000 hPa en 24 h 00 UTC	300 hPa 00 UTC
24tdg Bodendruckänderung 00 UTC	500/1000 hPa 00 UTC	Diagrammes aérologiques 00 UTC	Relativa 500/1000 hPa 00 UTC
24tdg Änderung relative Topographie	Aerological diagrams 00 UTC		300 hPa 00 UTC
500/1000 hPa 00 UTC			Variación de la presión del suelo 24 h en hPa a los 00 UTC
Aerologische Diagramme 00 UTC			Variación de espesor 500/1000 hPa en 24 h 00 UTC
			Diagramas aerológicos 00 UTC



BODEN 87-06-05 12 UTC DEUTSCHER WETTERDIENST

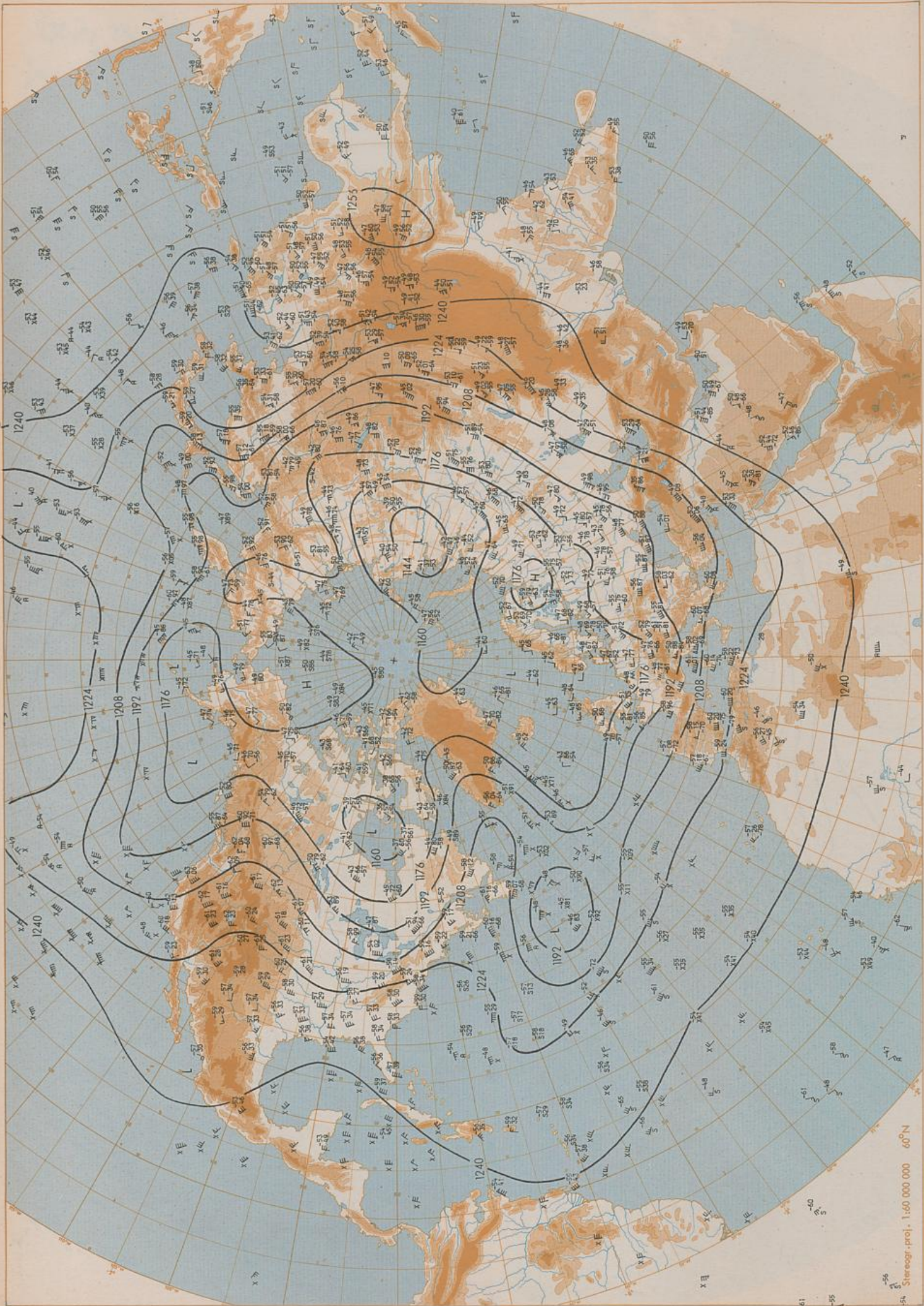
Surface chart 12 UTC





500 hPa 00 UTC

Stereograf 1:60 000 000 60°N



200 hPa 00 UTC

1:60 000 000
Stereogr.-proj.
60°N

54
55
56

40
45
50

30
35
40

20
25
30

10
15
20

0
5
10

-5
0
5

-10
-5
0

-15
-10
-5

-20
-15
-10

-25
-20
-15

-30
-25
-20

-35
-30
-25

-40
-35
-30

-45
-40
-35

-50
-45
-40

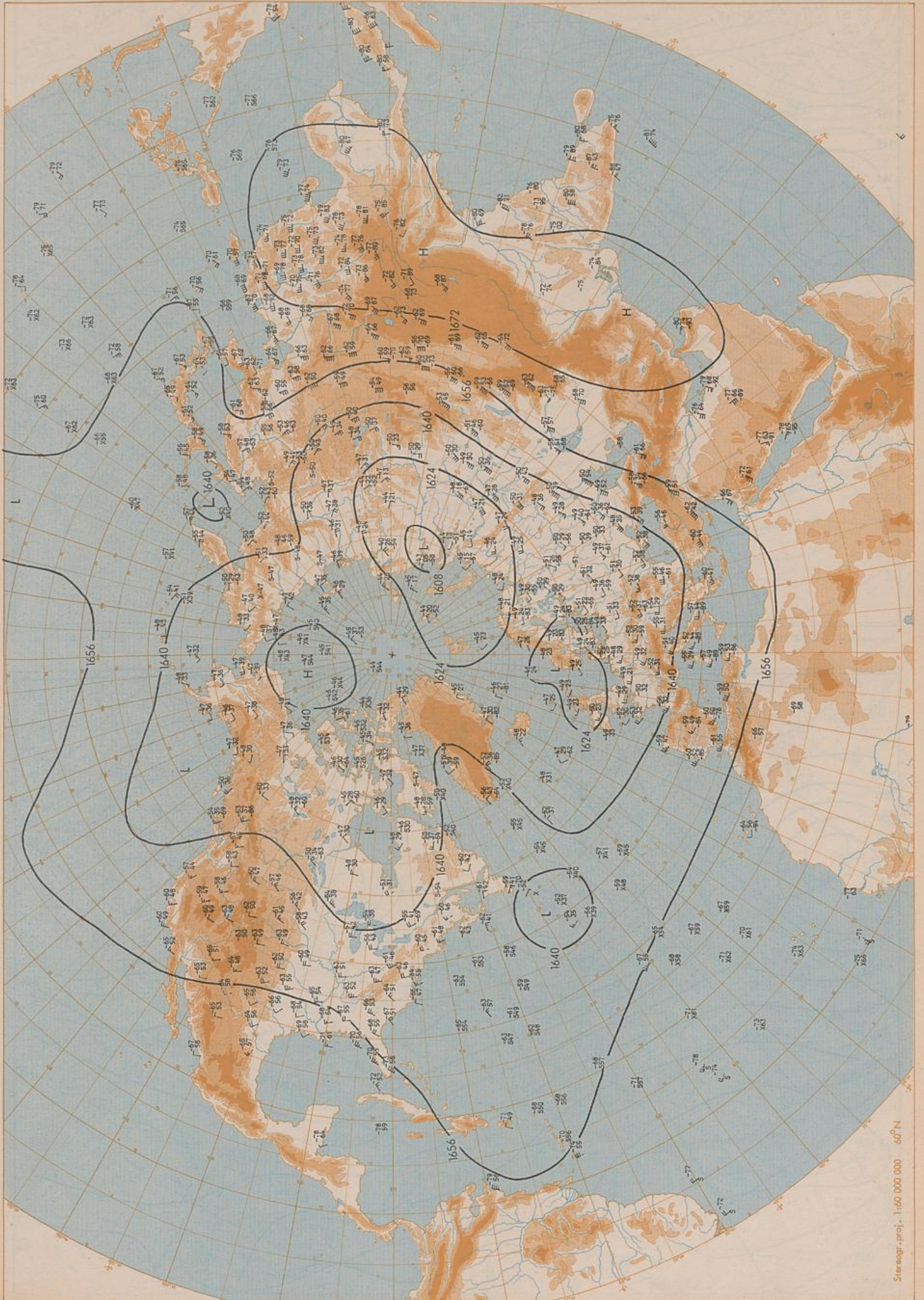
-55
-50
-45

-60
-55
-50

-65
-60
-55

-70
-65
-60

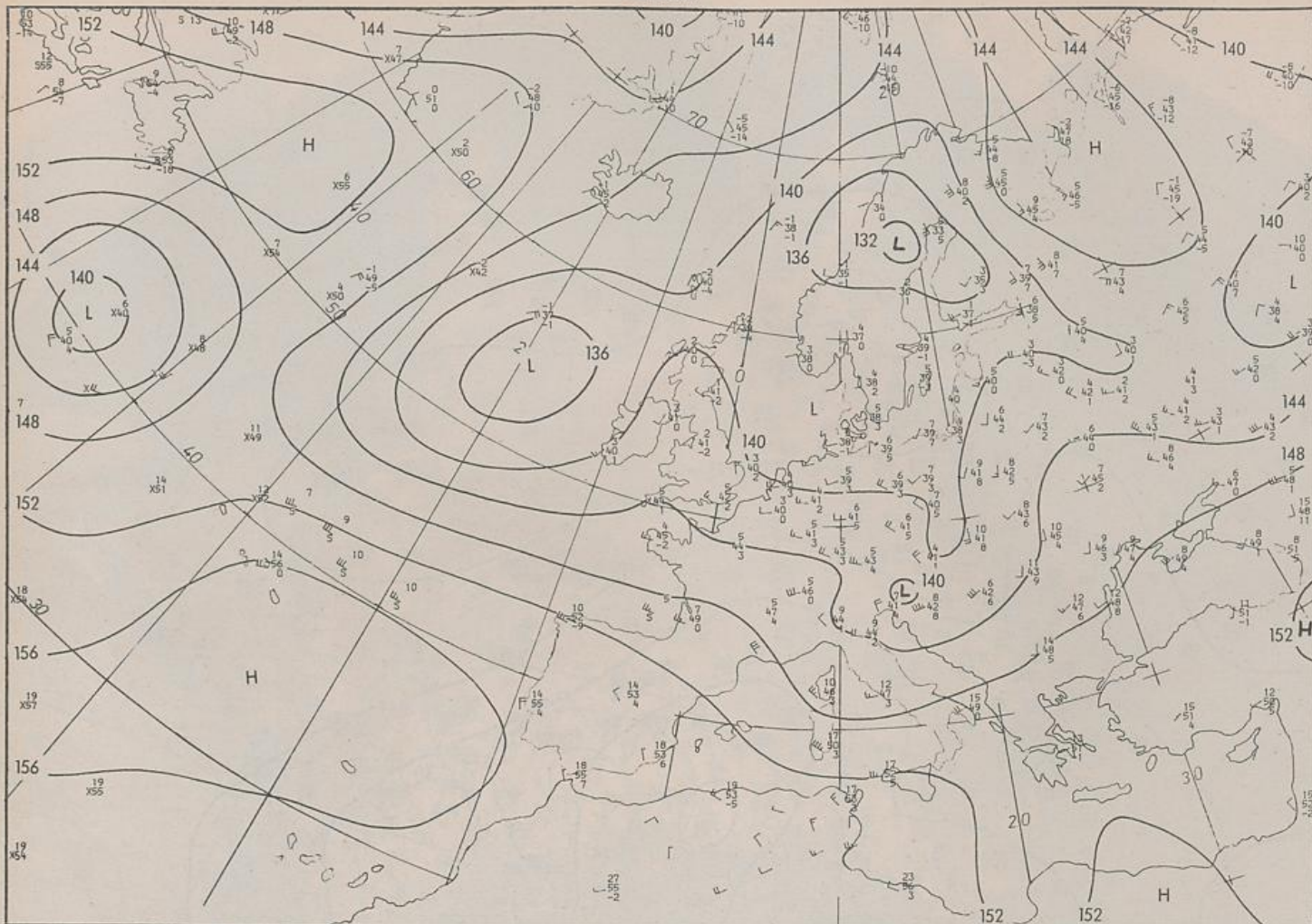
7



100 hPa 00 UTC

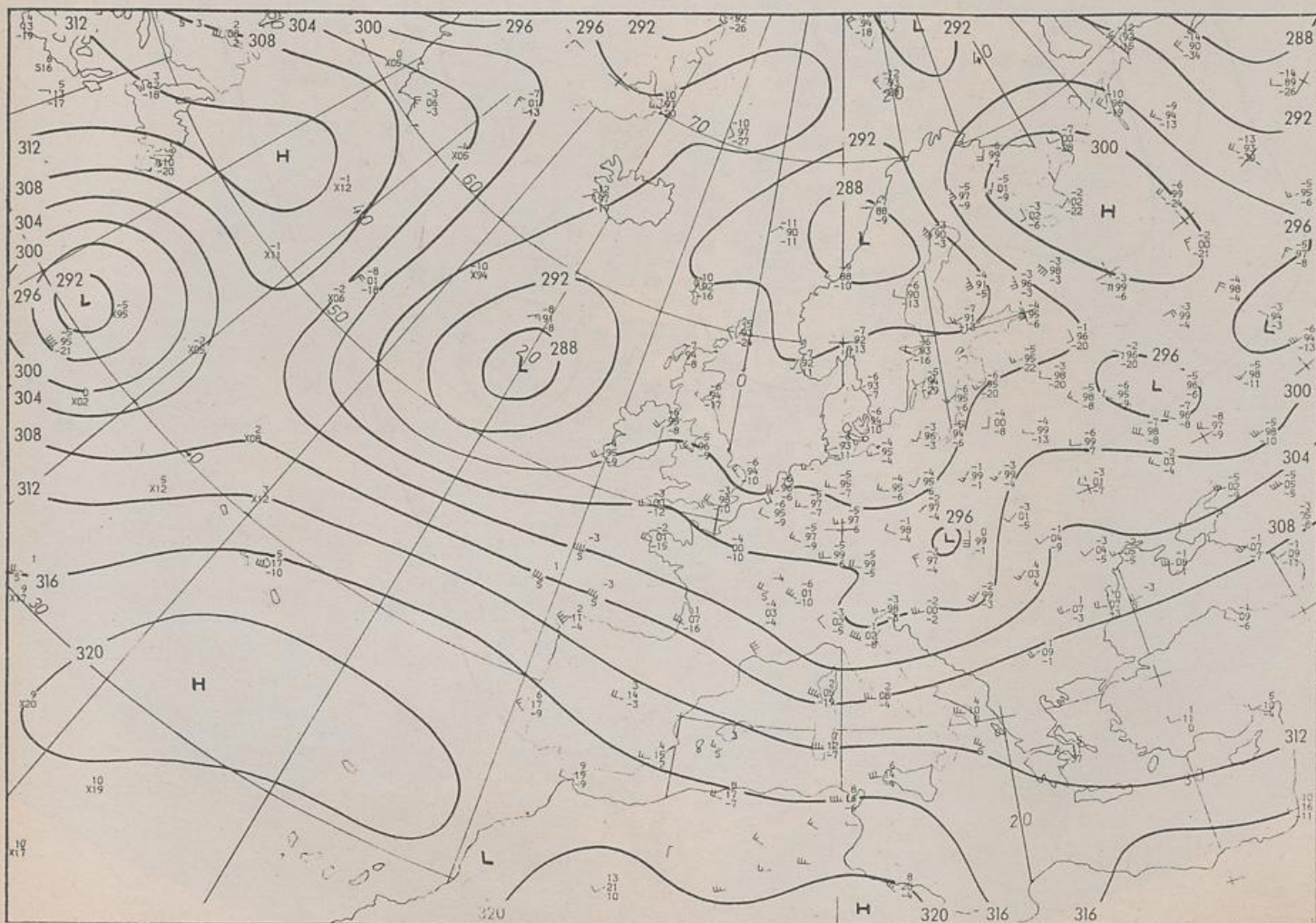
Stereogr. proj. 1:60 000 000 60°N

5.06.1987

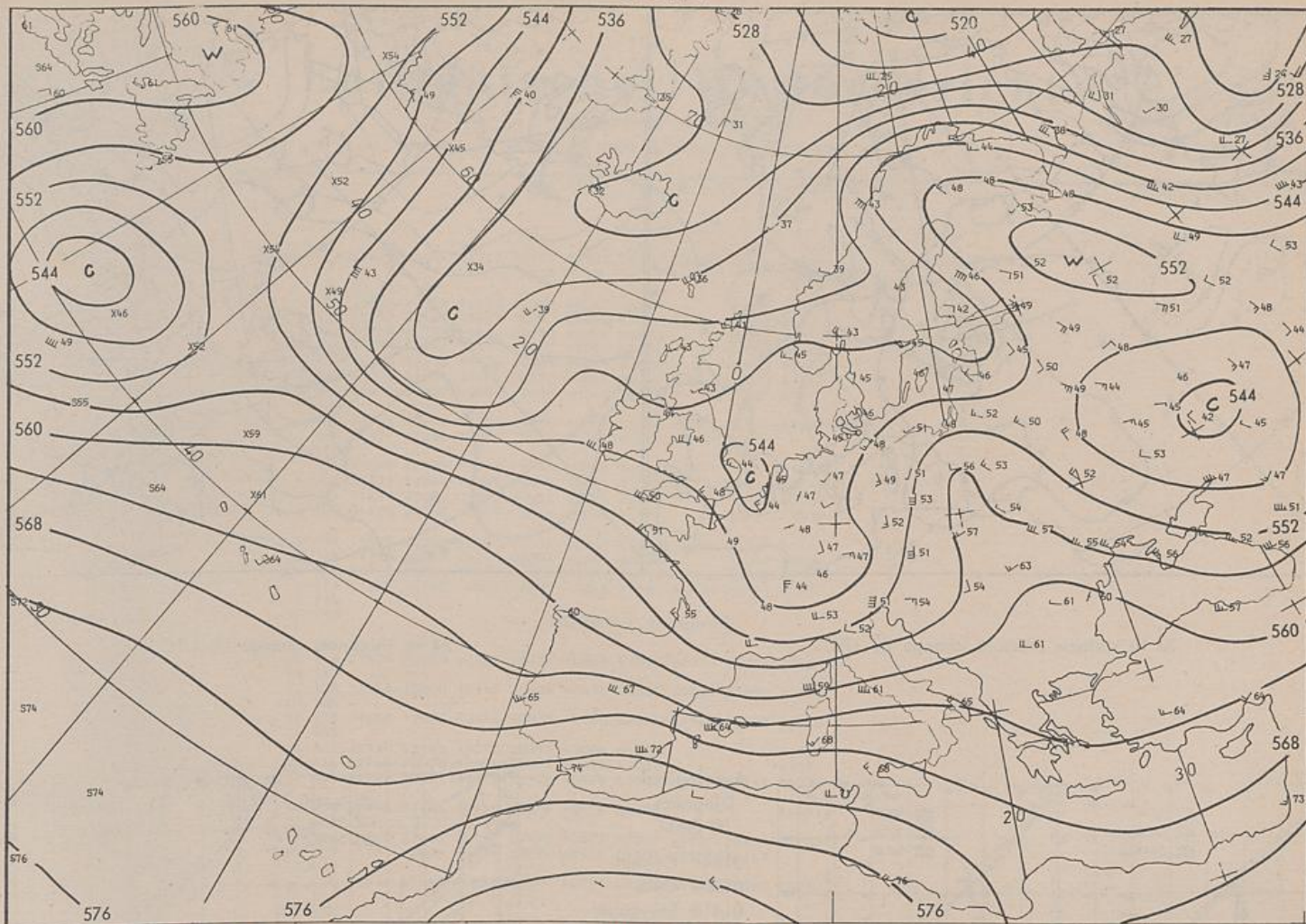


Stereogr. proj. 1:30 000 000 in 60°N

850 hPa 00 UTC

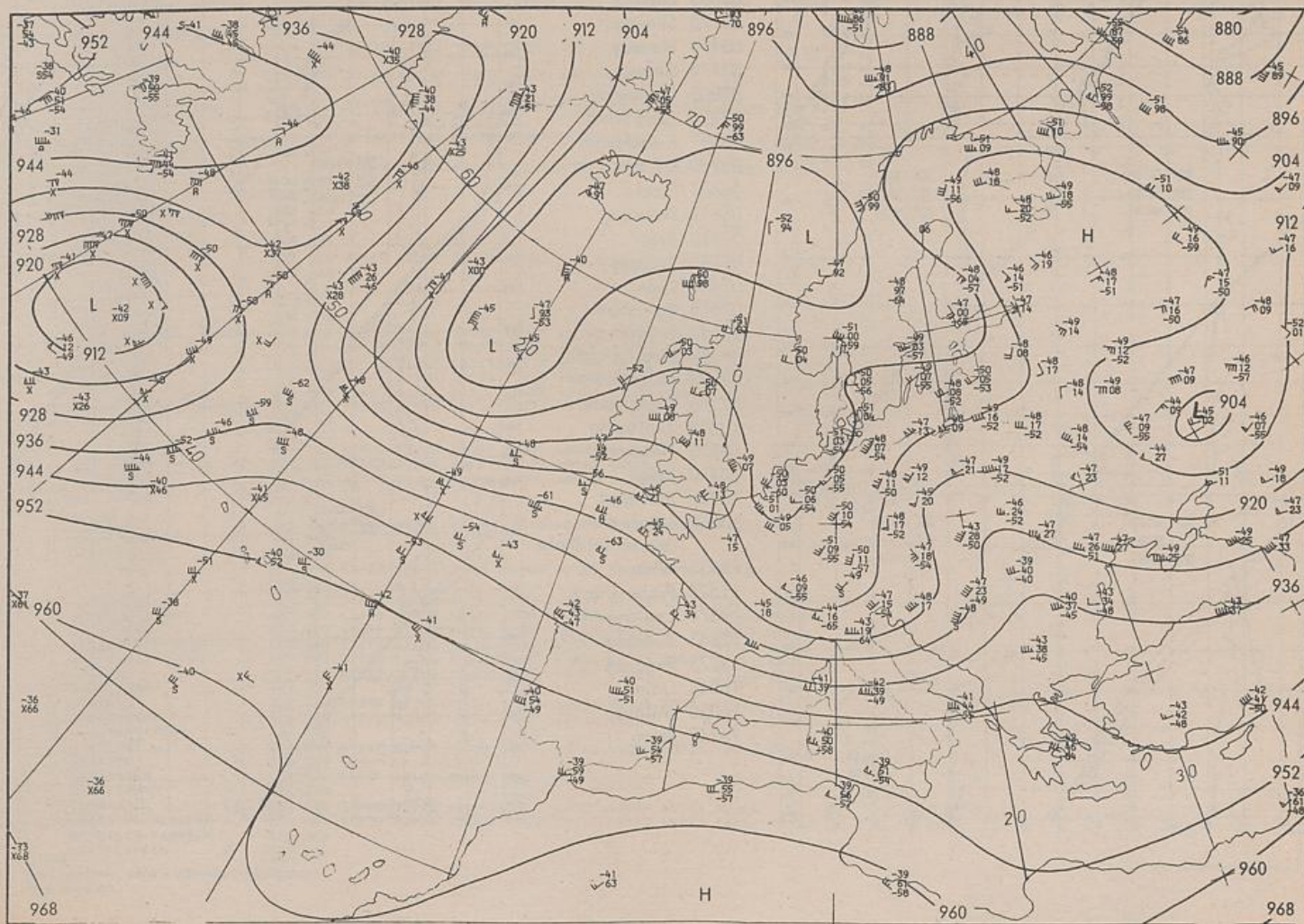


700 hPa 00 UTC



Stereogr. proj. 1:30 000 000 in 60°N

500/1000 hPa 00 UTC



300 hPa 00 UTC

