

# Europäischer Wetterbericht European Meteorological Bulletin Bulletin Météorologique Européen Boletín Meteorológico Europeo

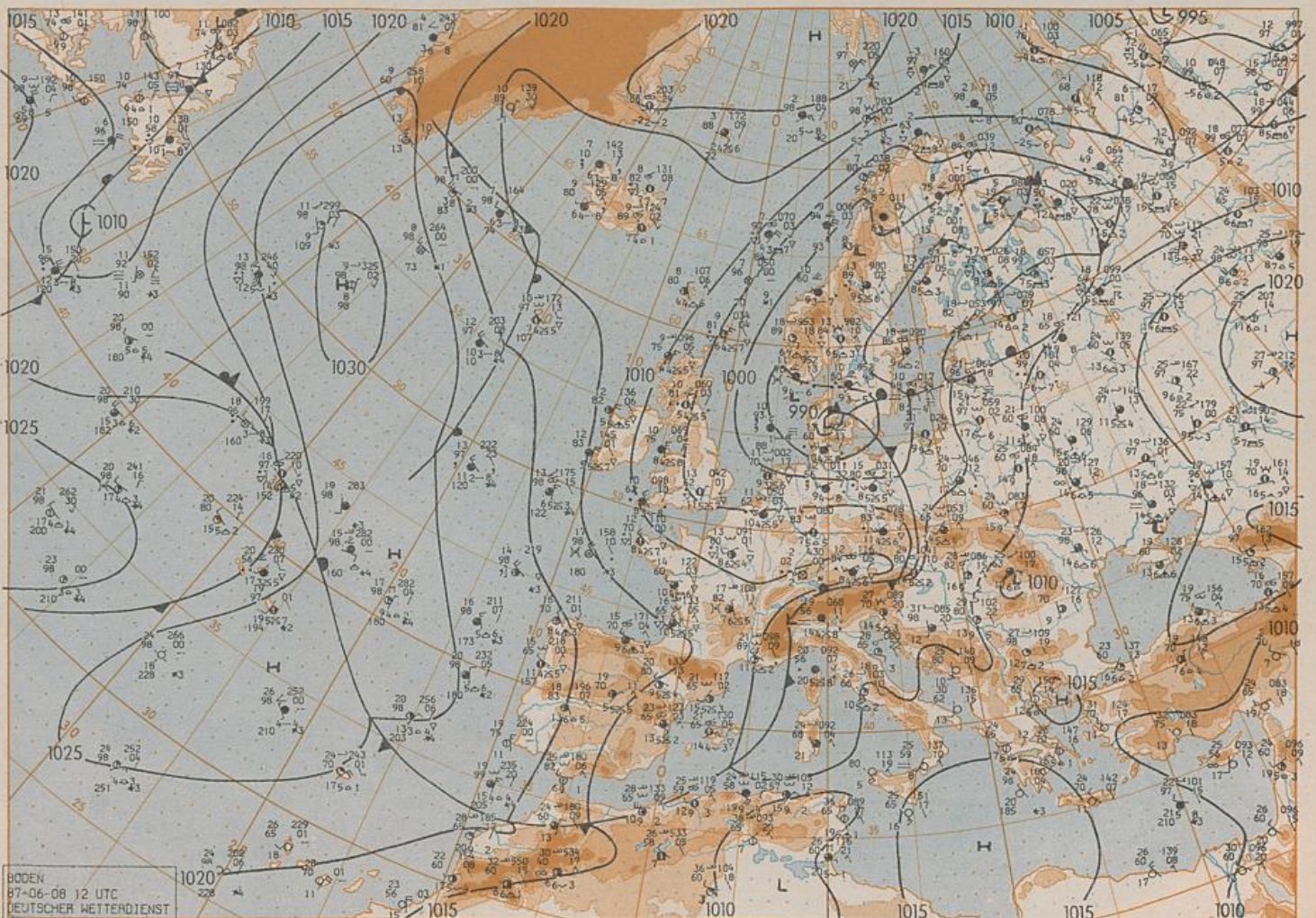
Amtsblatt des Deutschen Wetterdienstes

Druck und Verlag: Deutscher Wetterdienst - Zentralamt - Frankfurter Straße 135, Postfach 10 04 65, 6050 Offenbach a.M., Tel.: (069) 8 06 20

|  |                                     |                                 |   |
|--|-------------------------------------|---------------------------------|---|
| Erscheint täglich                            | Issued daily                        | Publié quotidiennement          | Se publica diariamente                            |
| Bezugspreis monatlich 30.00 DM zuzügl. Porto | Monthly price 30.00 DM plus postage | Prix mensuel 30.00 DM plus port | Precio de suscripción mensual 30.00 DM plus porte |
| Nachdruck nicht gestattet                    | All rights reserved                 | Reproduction interdite          | Se prohíbe la reproducción                        |

|   |    |                                    |           |                                      |     |
|---|----|------------------------------------|-----------|--------------------------------------|-----|
| Jahrgang<br>Volume<br>Volume<br>Volumen | 12 | Montag<br>Monday<br>Lundi<br>Lunes | 8.06.1987 | Nummer<br>Number<br>Número<br>Número | 159 |
|---|----|------------------------------------|-----------|--------------------------------------|-----|

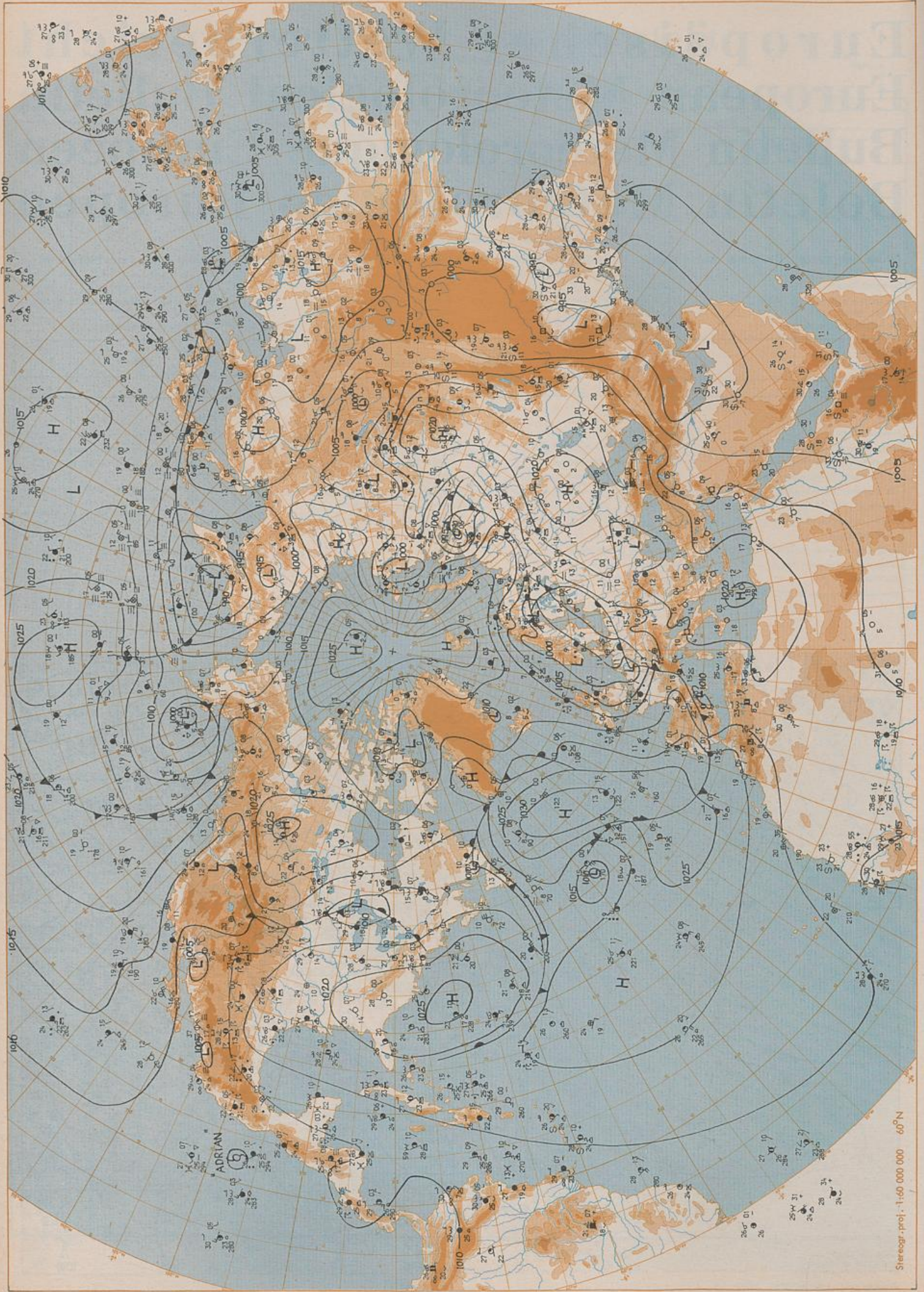
| Inhalt   | Content                                    | Contenu   | Contenido  |
|--|--|---|--|
| Bodenwetterkarte 12 UTC                                  | Surface chart 12 UTC                       | Carte de surface à 12 UTC                                   | Análisis en superficie a las 12 UTC                                  |
| Bodenwetterkarte Nordhemisphäre 00 UTC                   | Surface chart northern hemisphere 00 UTC   | Carte de surface sur l'hémisphère nord à 00 UTC             | Análisis en superficie hemisferio norte a las 00 UTC                 |
| 500 hPa-Fläche Nordhemisphäre 00 UTC                     | 500 hPa surface northern hemisphere 00 UTC | Surface 500 hPa sur l'hémisphère nord à 00 UTC              | Topografía de la superficie de 500 hPa hemisferio norte a las 00 UTC |
| 200 hPa-Fläche Nordhemisphäre 00 UTC                     | 200 hPa surface northern hemisphere 00 UTC | Surface 200 hPa sur l'hémisphère nord à 00 UTC              | Topografía de la superficie de 200 hPa hemisferio norte a las 00 UTC |
| 100 hPa-Fläche Nordhemisphäre 00 UTC                     | 100 hPa surface northern hemisphere 00 UTC | Surface 100 hPa sur l'hémisphère nord à 00 UTC              | Topografía de la superficie de 100 hPa hemisferio norte a las 00 UTC |
| 850 hPa 00 UTC, 700 hPa 00 UTC                           | 850 hPa 00 UTC, 700 hPa 00 UTC             | 850 hPa 00 UTC, 700 hPa 00 UTC                              | 850 hPa 00 UTC, 700 hPa 00 UTC                                       |
| Relative Topographie 500/1000 hPa 00 UTC                 | Thickness chart 500/1000 hPa 00 UTC        | Carte d'épaisseur 500/1000 hPa 00 UTC                       | Relativa 500/1000 hPa 00 UTC   |
| 300 hPa 00 UTC   | 300 hPa 00 UTC                             | 300 hPa 00 UTC  | 300 hPa 00 UTC   |
| 24stdg Bodendruckänderung 00 UTC                         | 24 hr surface pressure change 00 UTC       | Variations de pression en 24 h (niveau mer) en hPa à 00 UTC | Variación de la presión del suelo 24 h en hPa a las 00 UTC           |
| 24stdg Änderung relative Topographie 500/1000 hPa 00 UTC | 24 hr thickness change 500/1000 hPa 00 UTC | Variations d'épaisseur 500/1000 hPa en 24 h 00 UTC          | Variación de espesor 500/1000 hPa en 24 h 00 UTC                     |
| Aerologische Diagramme 00 UTC                            | Aerological diagrams 00 UTC                | Diagrammes aérologiques 00 UTC                              | Diagramas aerológicos 00 UTC   |



BODEN  
87-06-08 12 UTC  
DEUTSCHER WETTERDIENST

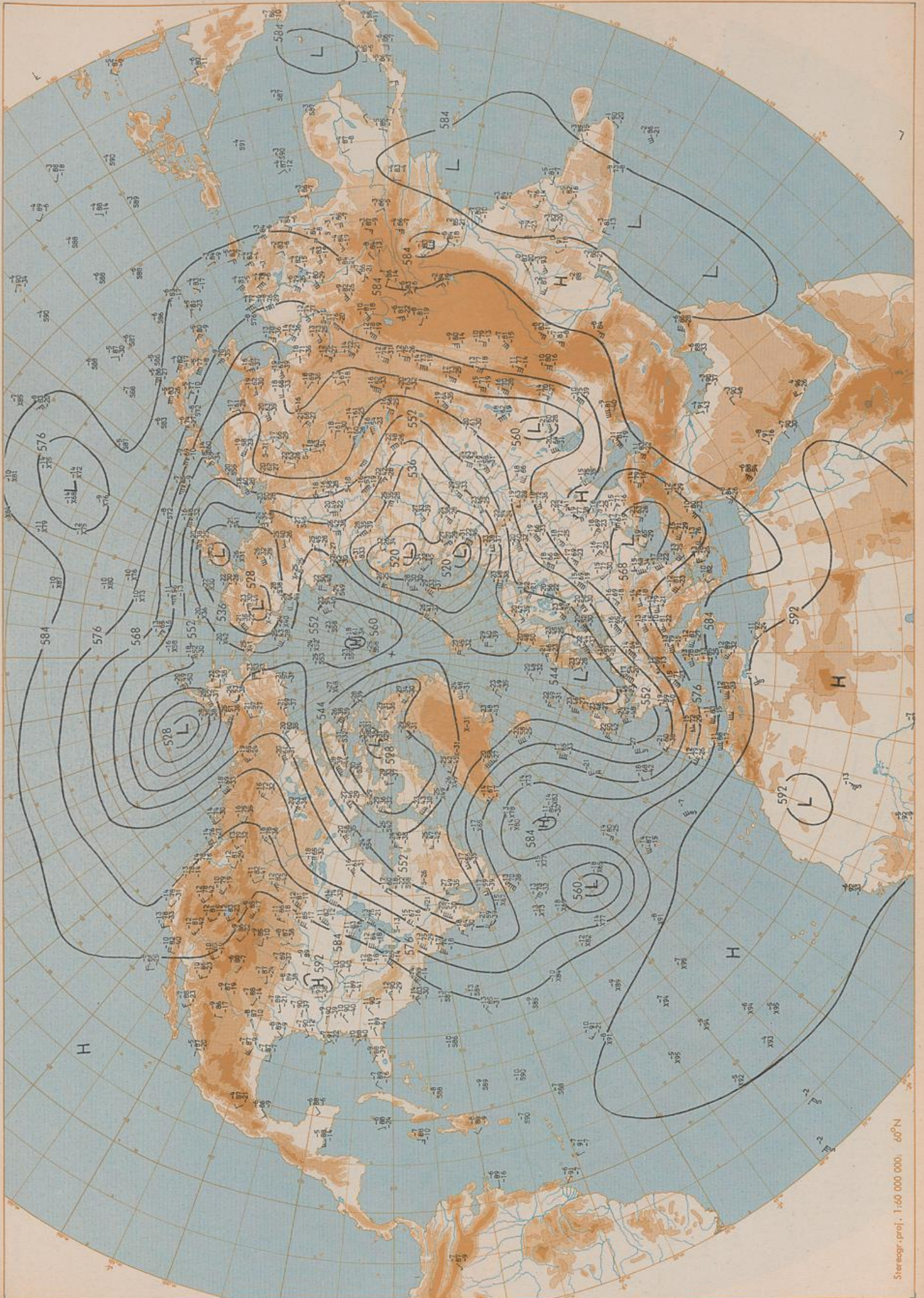
Stereogr. proj. 1:30 000 000 60°N

Surface chart 12 UTC



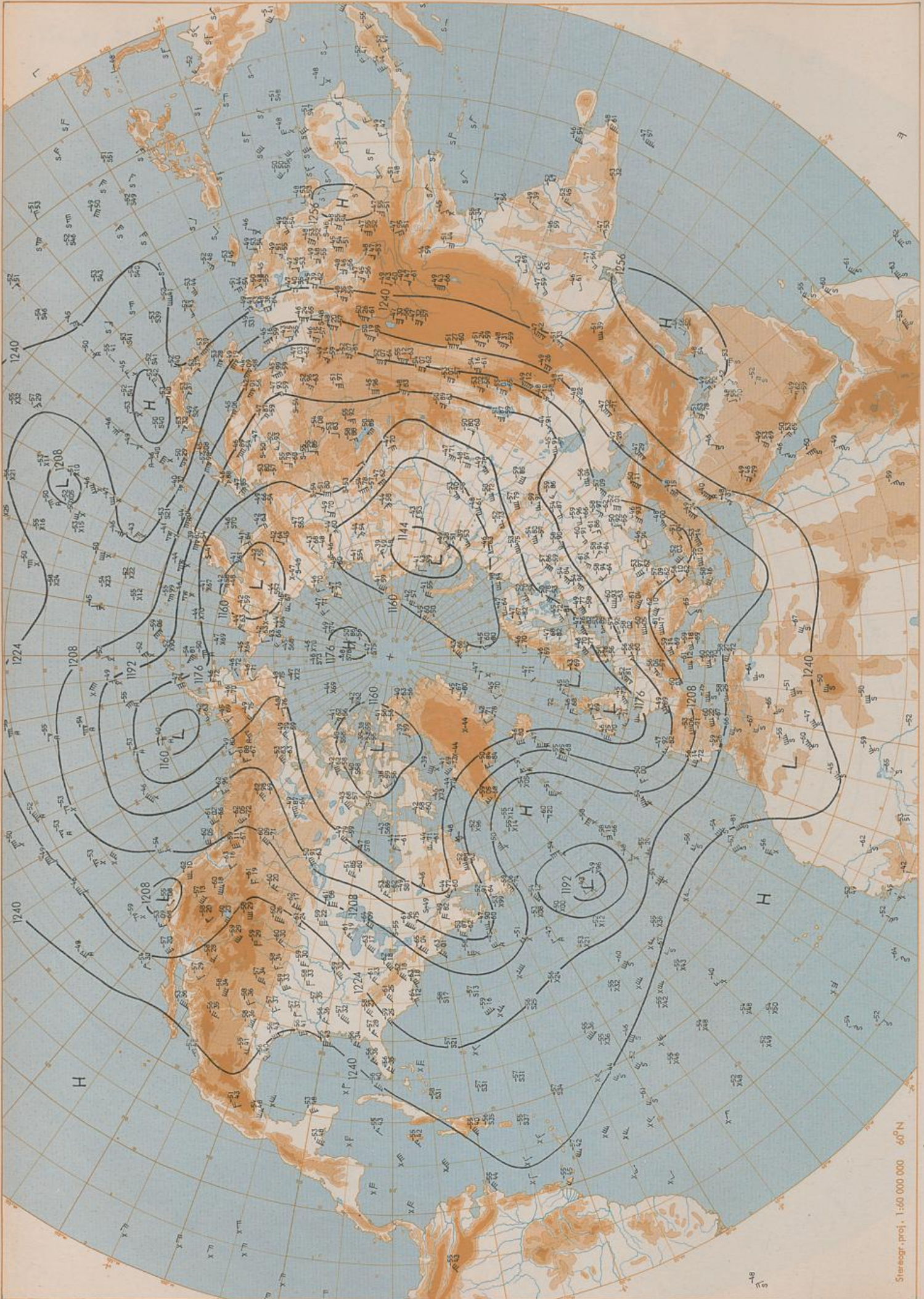
Surface chart 00 UTC

Stereogr. proj. 1:60 000 000 60° N



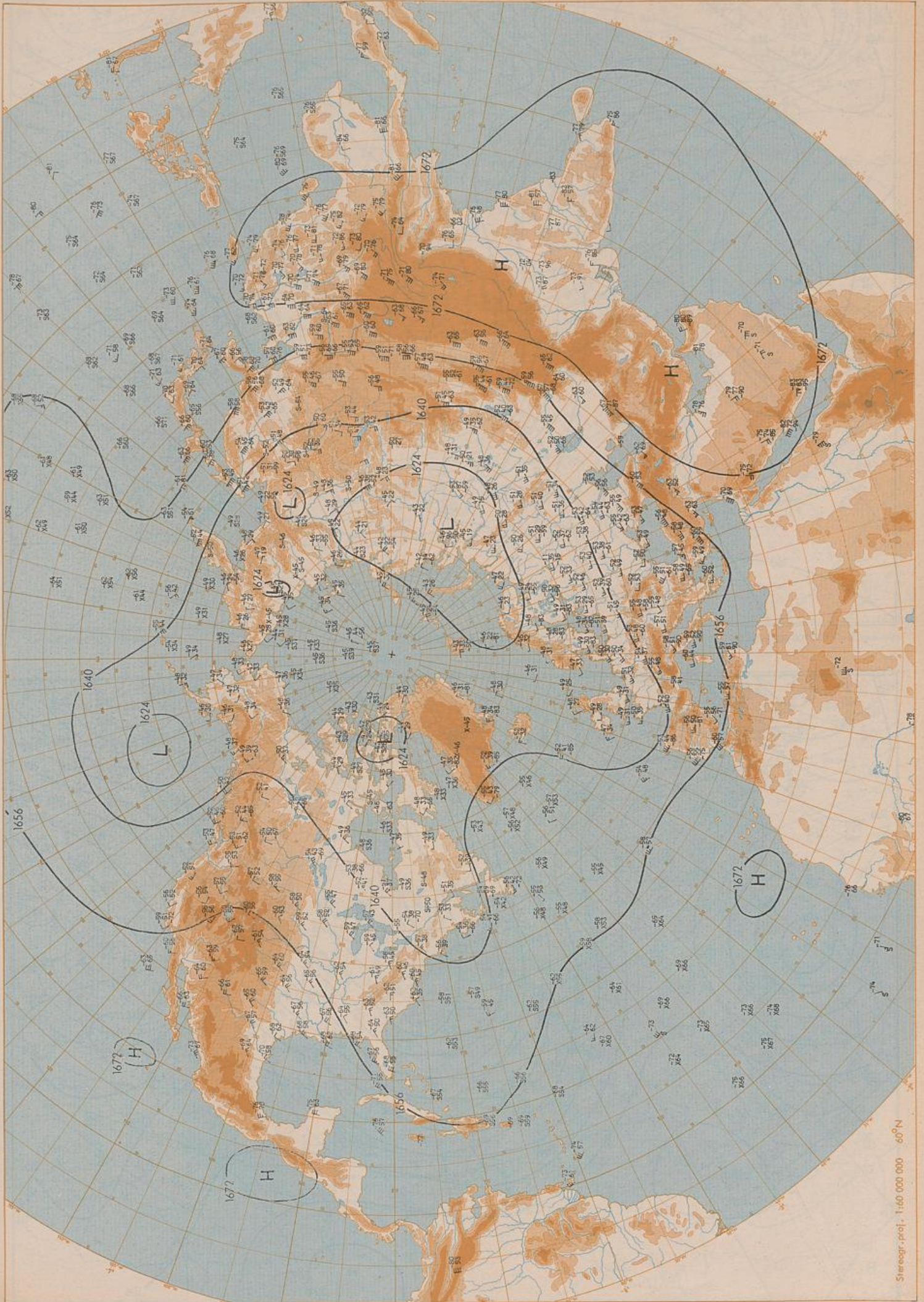
500 hPa 00 UTC

Stereogr. proj. 1:60 000 000, 60°N

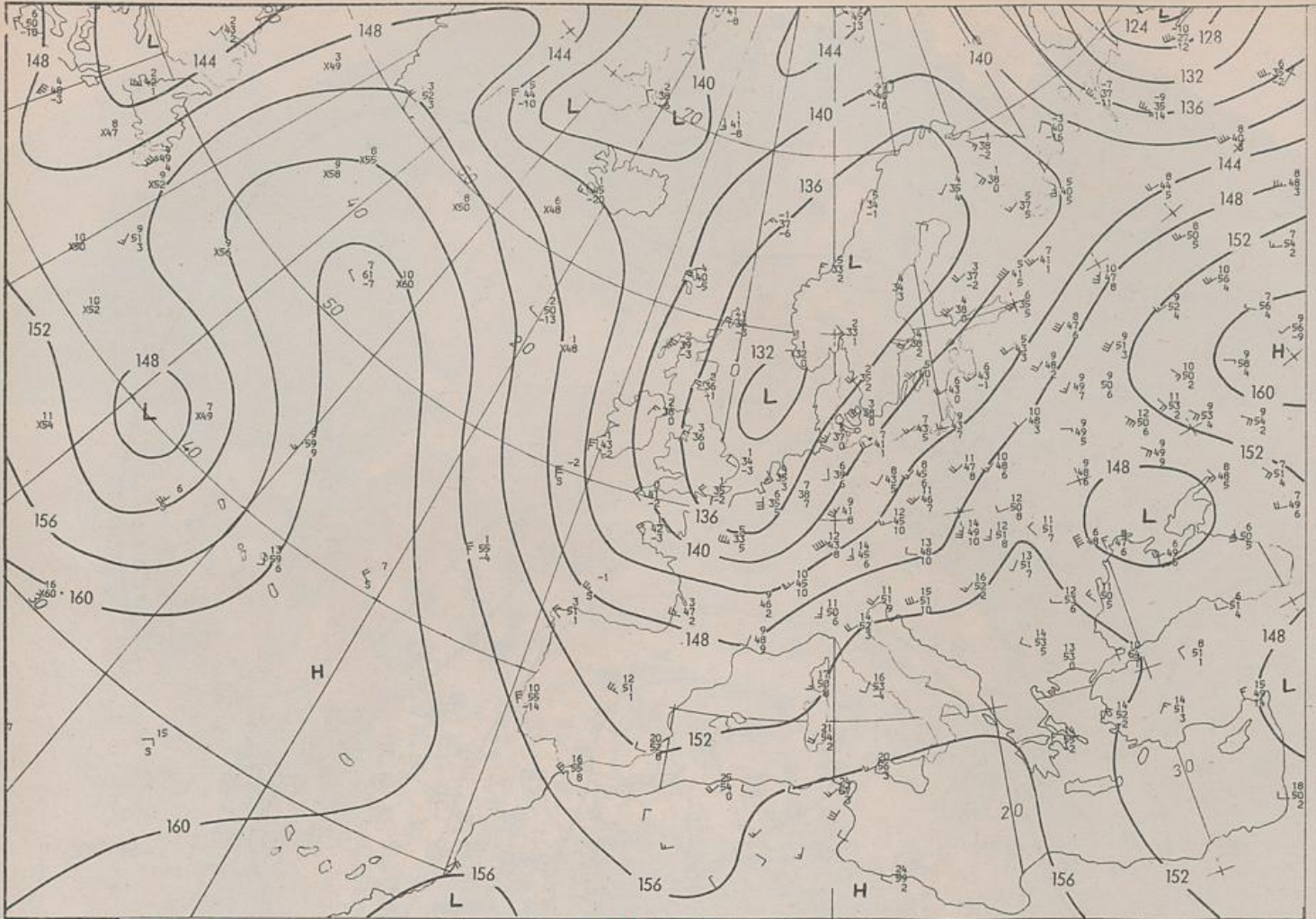


200 hPa 00 UTC

Stereogr. proj. 1:60 000 000 60°N

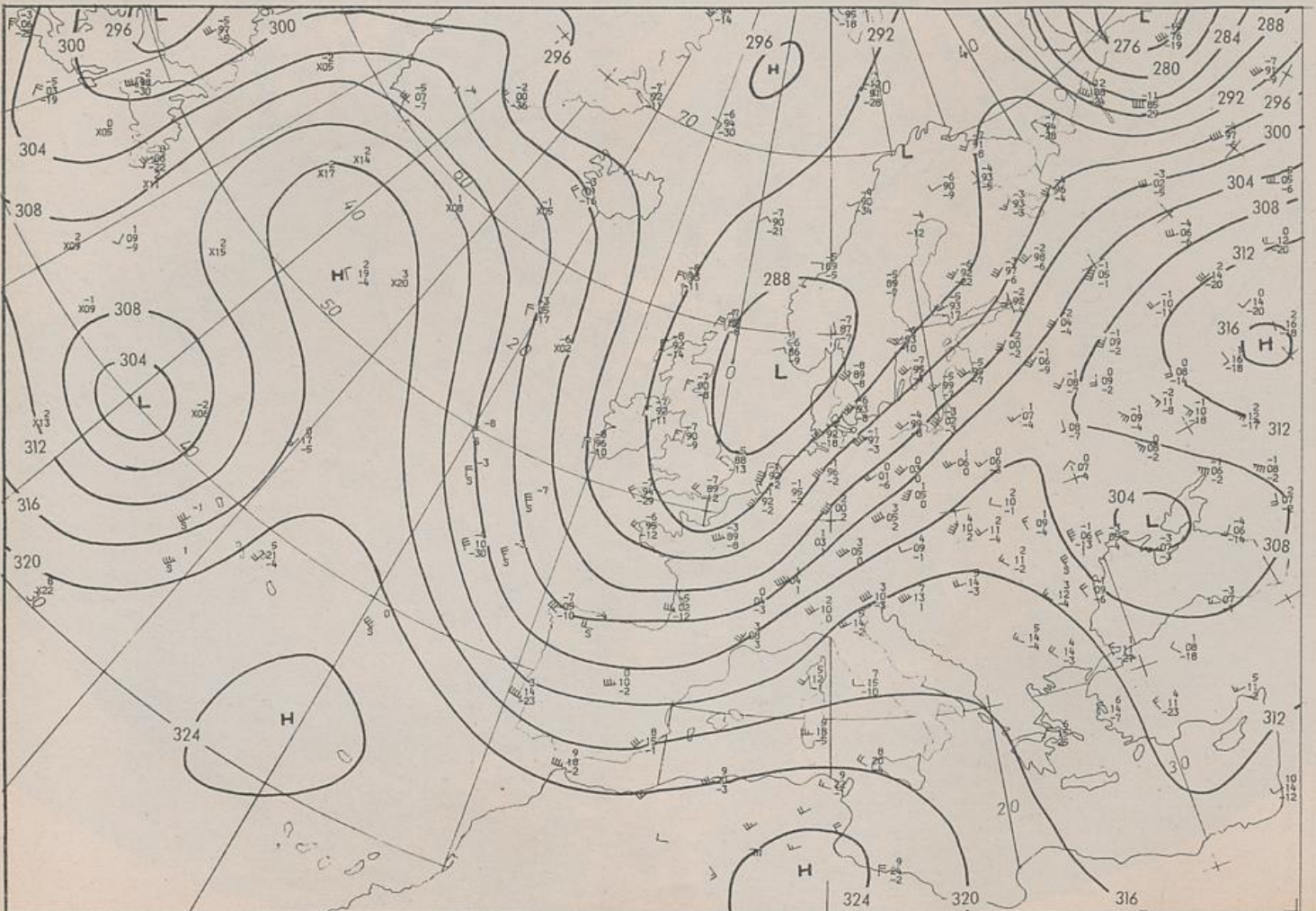


100 hPa 00 UTC

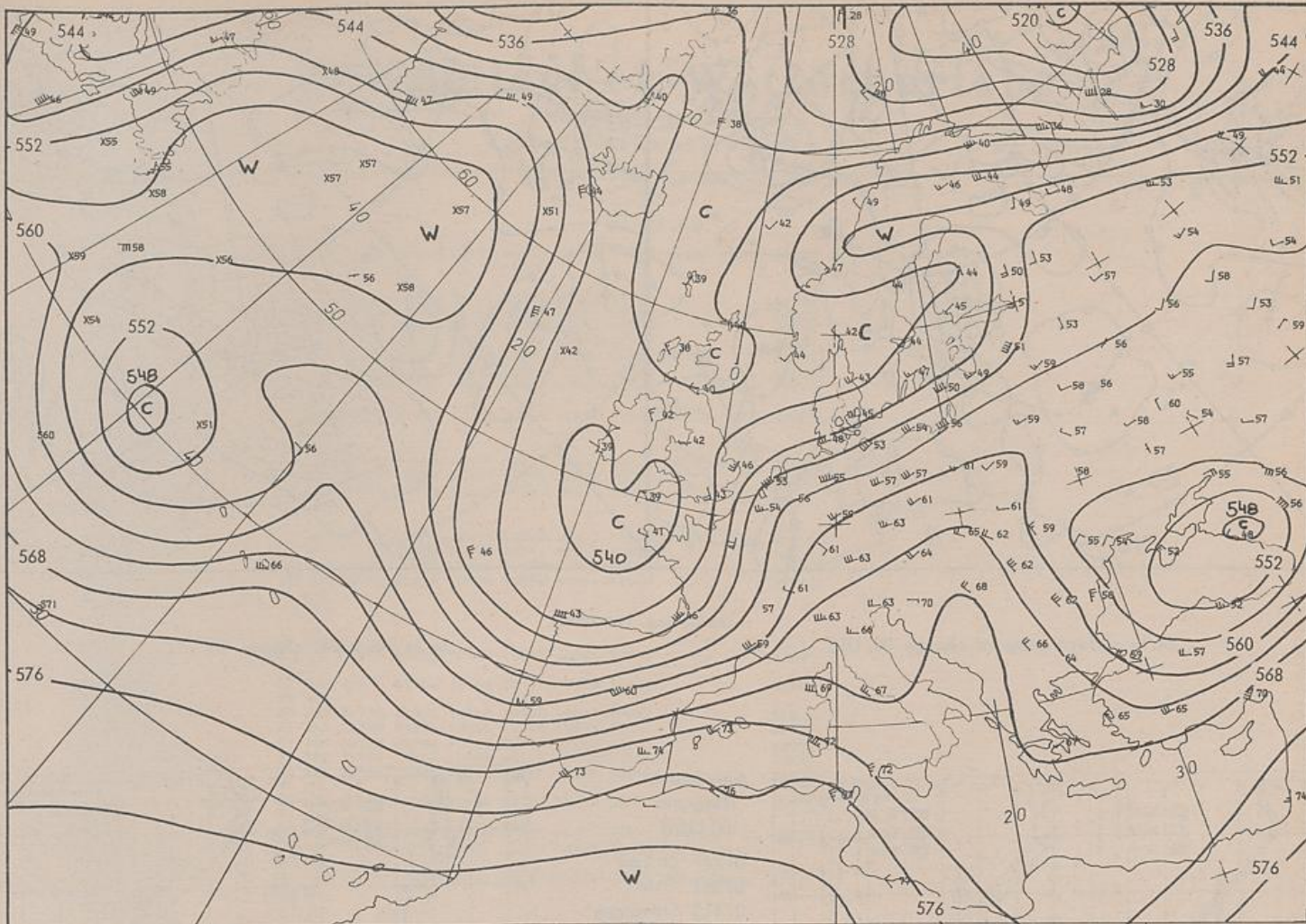


Stereogr. proj. 1:30 000 000 in 60°N

850 hPa 00 UTC

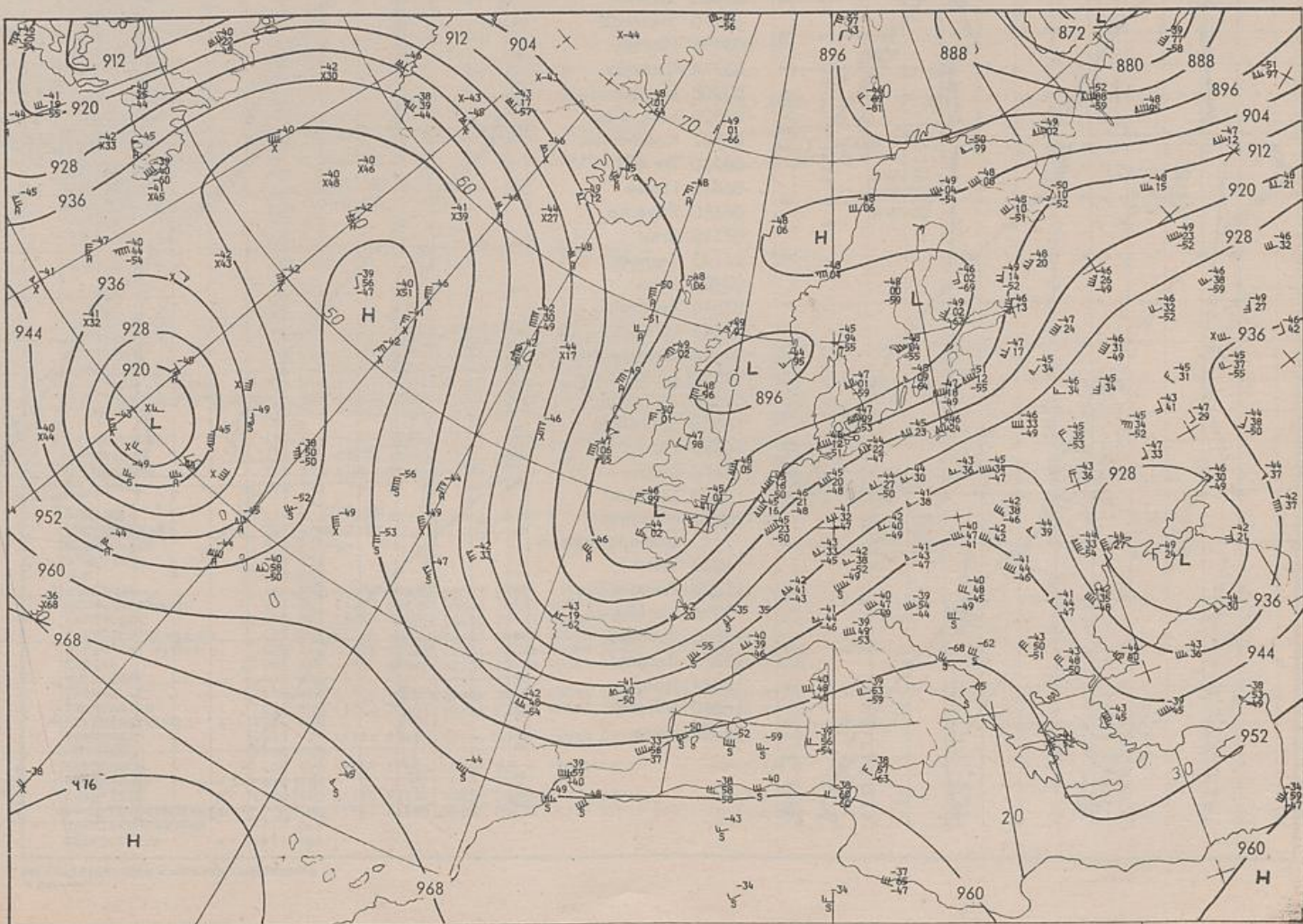


700 hPa 00 UTC

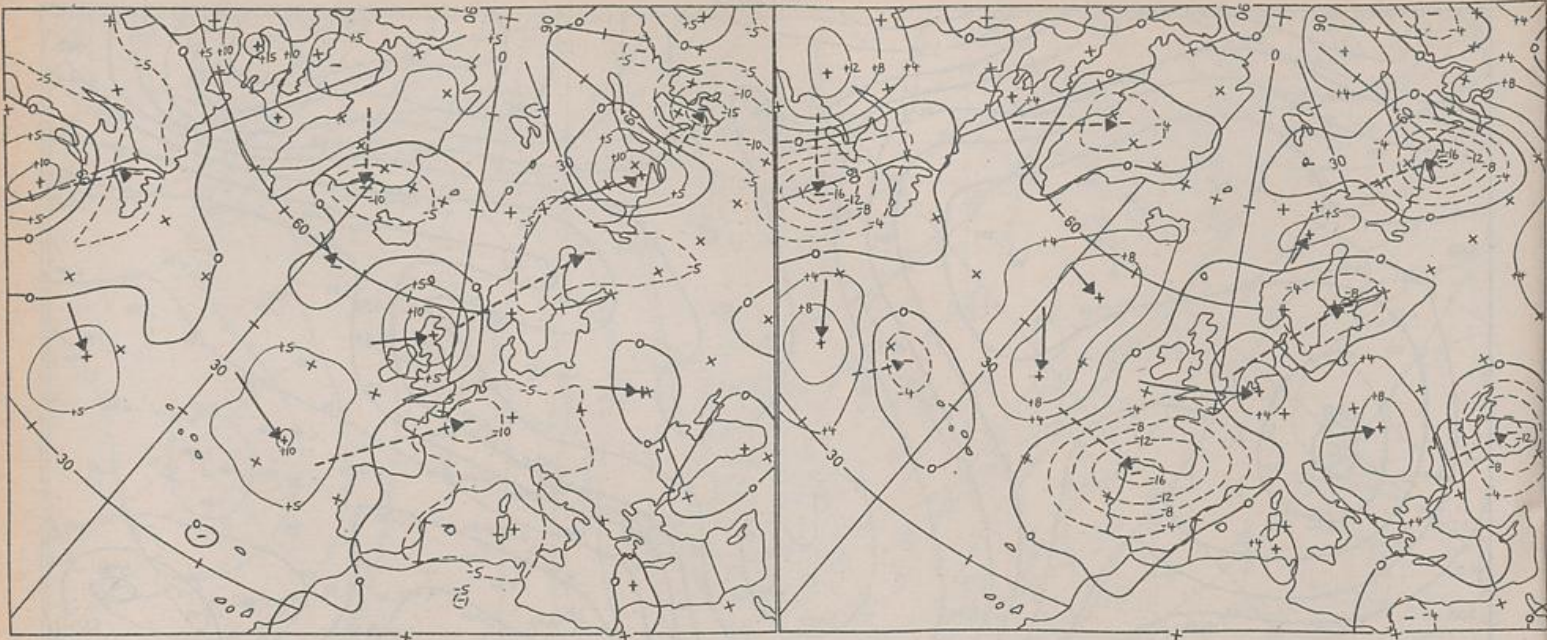


Stereogr. proj. 1:30 000 000 in 60°N

500/1000 hPa 00 UTC



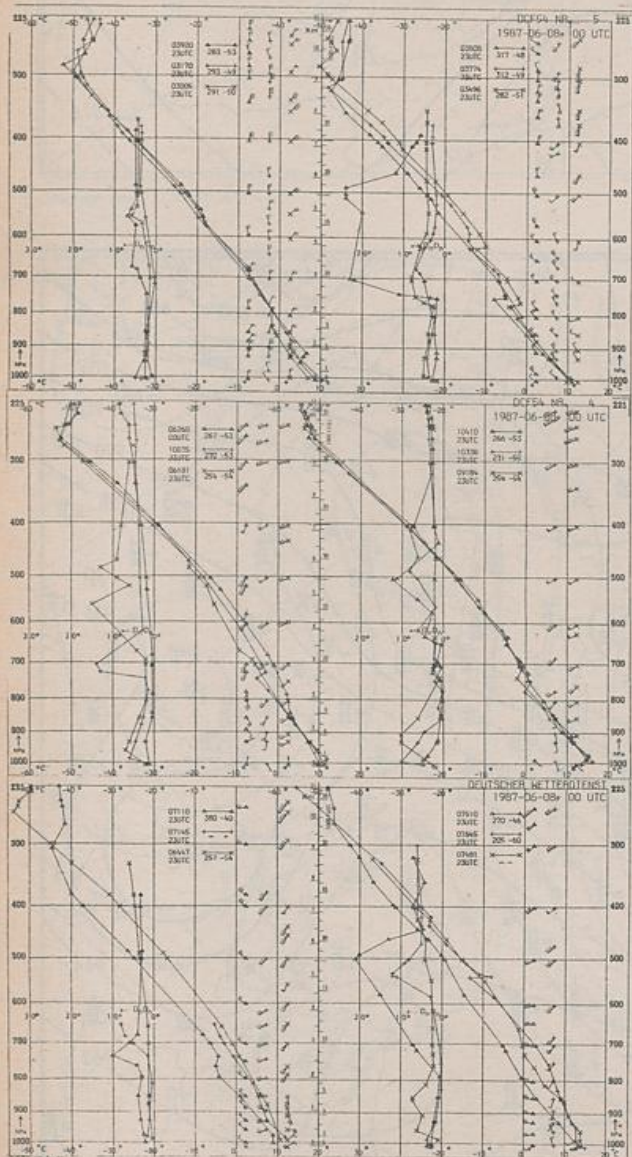
300 hPa 00 UTC



Stereogr. proj. 1:60 000 000

24 hr surface pressure change 00 UTC

24 hr thickness change 00 UTC



Aerological Diagrams 00 GMT

- 01241 Orland
- 01384 Oslo
- 01415 Stavanger
- 02465 Stockholm
- 02527 Goteborg
- 03005 Lerwick
- 03170 Shanwell
- 03496 Hemsby
- 03774 Crawley
- 03808 Cambridge
- 03920 Long Kesh
- 06181 Kobenhavn
- 06260 De Bilt
- 06447 Uccle
- 06610 Payame
- 07110 Brest
- 07145 Trappes
- 07481 Lyon
- 07510 Bordeaux
- 07645 Nimes
- 09184 Greifswald
- 09393 Lindenberg
- 09548 Meiningen
- 10035 Schleswig
- 10338 Hannover
- 10410 Essen
- 10739 Stuttgart
- 10868 München-Oberschleißheim
- 11035 Wien
- 11520 Praha-Libus
- 12374 Legionowo
- 12843 Budapest
- 13275 Beograd
- 16044 Udine
- 16080 Milano
- 16242 Roma

