

Europäischer Wetterbericht European Meteorological Bulletin Bulletin Météorologique Européen Boletín Meteorológico Europeo

Amtsblatt des Deutschen Wetterdienstes

Druck und Verlag: Deutscher Wetterdienst - Zentralamt - Frankfurter Straße 135, Postfach 10 04 65, 6050 Offenbach a.M., Tel.: (069) 8 06 20

Erscheint täglich
Bezugspreis monatlich 30,00 DM
zuzügl. Porto
Nachdruck nicht gestattet

Issued daily
Monthly price 30,00 DM
plus postage
All rights reserved

Publié quotidiennement
Prix mensuel 30,00 DM
plus port
Reproduction interdite

Se publica diariamente
Precio de suscripción mensual 30,00 DM
plus porte
Se prohíbe la reproducción

Jahrgang
Volume 13
Volume
Volumen

Sonntag
Sunday
Dimanche
Domingo

21.02.1998

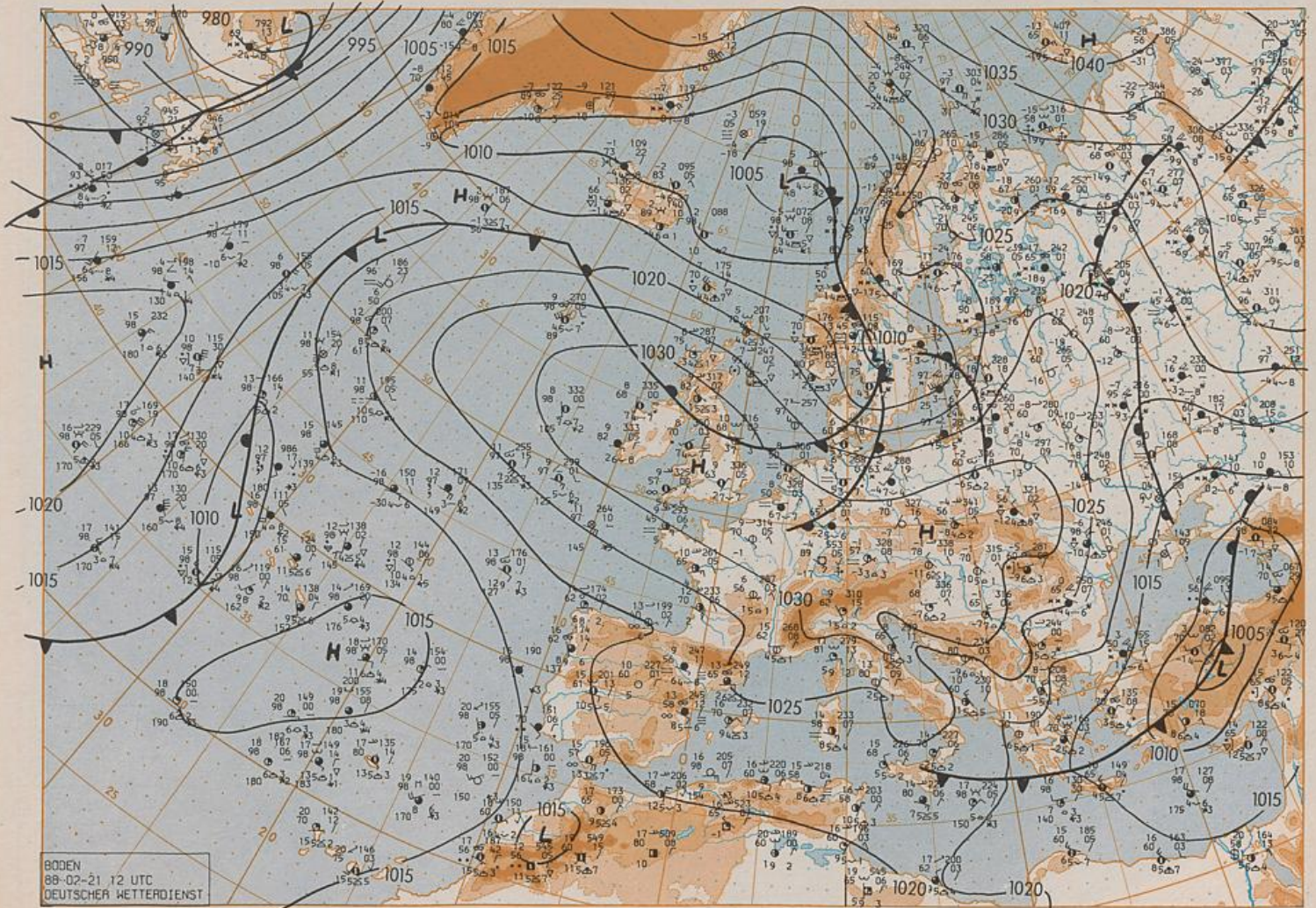
Nummer
Number 52
Número
Número

Inhalt
Bodenwetterkarte 12 UTC
Bodenwetterkarte Nordhemisphäre 00 UTC
500 hPa-Fläche Nordhemisphäre 00 UTC
200 hPa-Fläche Nordhemisphäre 00 UTC
100 hPa-Fläche Nordhemisphäre 00 UTC
850 hPa 00 UTC, 700 hPa 00 UTC
Relative Topographie 500/1000 hPa 00 UTC
300 hPa 00 UTC
24tdg Bodendruckänderung 00 UTC
24tdg Änderung relative Topographie
500/1000 hPa 00 UTC
Aerologische Diagramme 00 UTC

Contant
Surface chart 12 UTC
Surface chart northern hemisphere 00 UTC
500 hPa surface northern hemisphere 00 UTC
200 hPa surface northern hemisphere 00 UTC
100 hPa surface northern hemisphere 00 UTC
850 hPa 00 UTC, 700 hPa 00 UTC
Thickness chart 500/1000 hPa 00 UTC
300 hPa 00 UTC
24 hr surface pressure change 00 UTC
24 hr thickness change
500/1000 hPa 00 UTC
Aerological diagrams 00 UTC

Contenu
Carte de surface à 12 UTC
Carte de surface sur l'hémisphère nord à 00 UTC
Surface 500 hPa sur l'hémisphère nord à 00 UTC
Surface 200 hPa sur l'hémisphère nord à 00 UTC
Surface 100 hPa sur l'hémisphère nord à 00 UTC
850 hPa 00 UTC, 700 hPa 00 UTC
Carte d'épaisseur 500/1000 hPa 00 UTC
300 hPa 00 UTC
Variations de pression en 24 h (niveau mer)
en hPa à 00 UTC
Variations d'épaisseur 500/1000 hPa
en 24 h 00 UTC
Diagrammes aérologiques 00 UTC

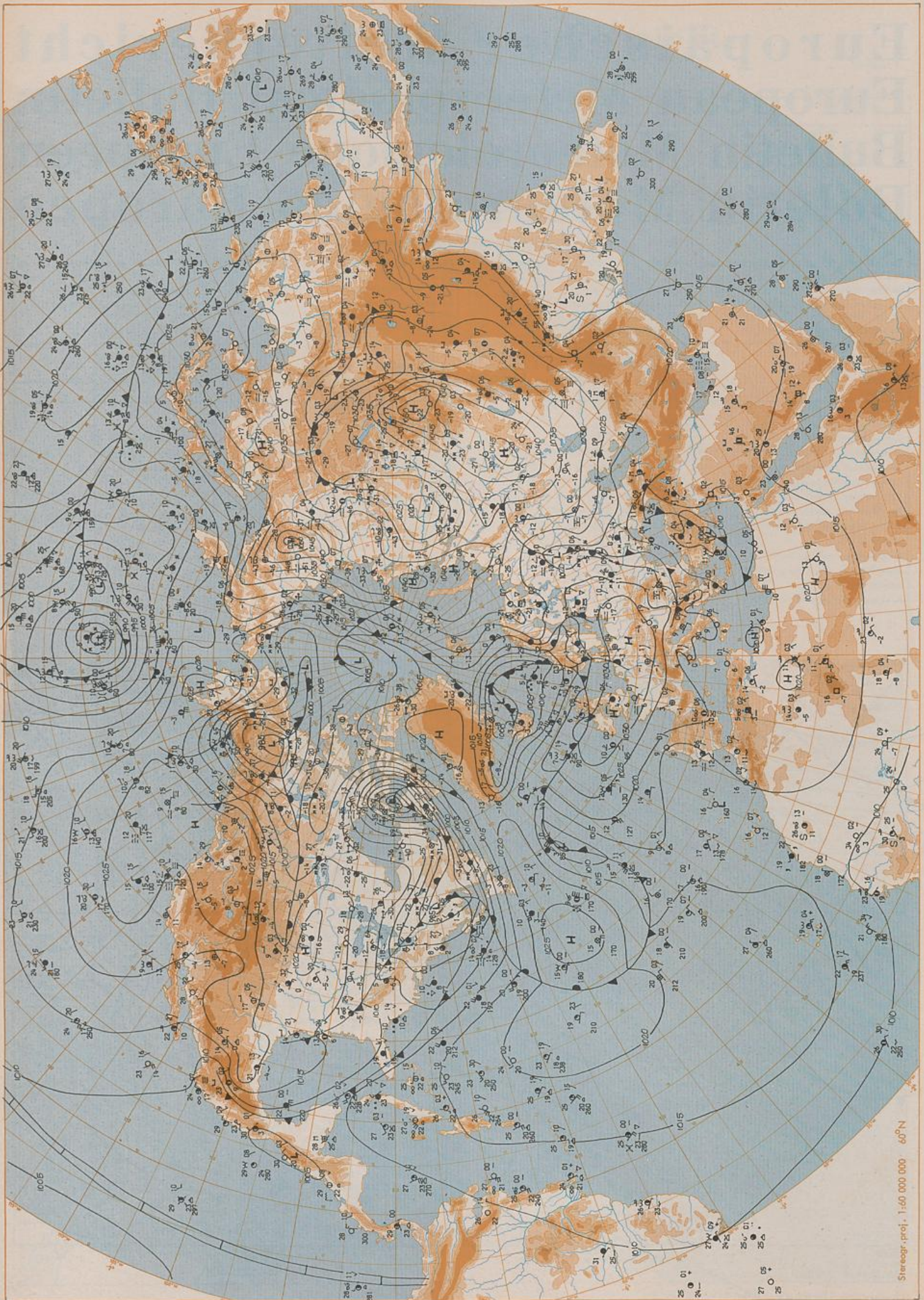
Contenido
Análisis en superficie a las 12 UTC
Análisis en superficie hemisferio norte a las 00 UTC
Topografía de la superficie de 500 hPa hemisferio
norte a las 00 UTC
Topografía de la superficie de 200 hPa hemisferio
norte a las 00 UTC
Topografía de la superficie de 100 hPa hemisferio
norte a las 00 UTC
850 hPa 00 UTC, 700 hPa 00 UTC
Relativo 500/1000 hPa 00 UTC
300 hPa 00 UTC
Variación de la presión del suelo 24 h en hPa
a las 00 UTC
Variación de espesor 500/1000 hPa
en 24 h 00 UTC
Diagramas aerológicos 00 UTC



BODEN
88-02-21 12 UTC
DEUTSCHER WETTERDIENST

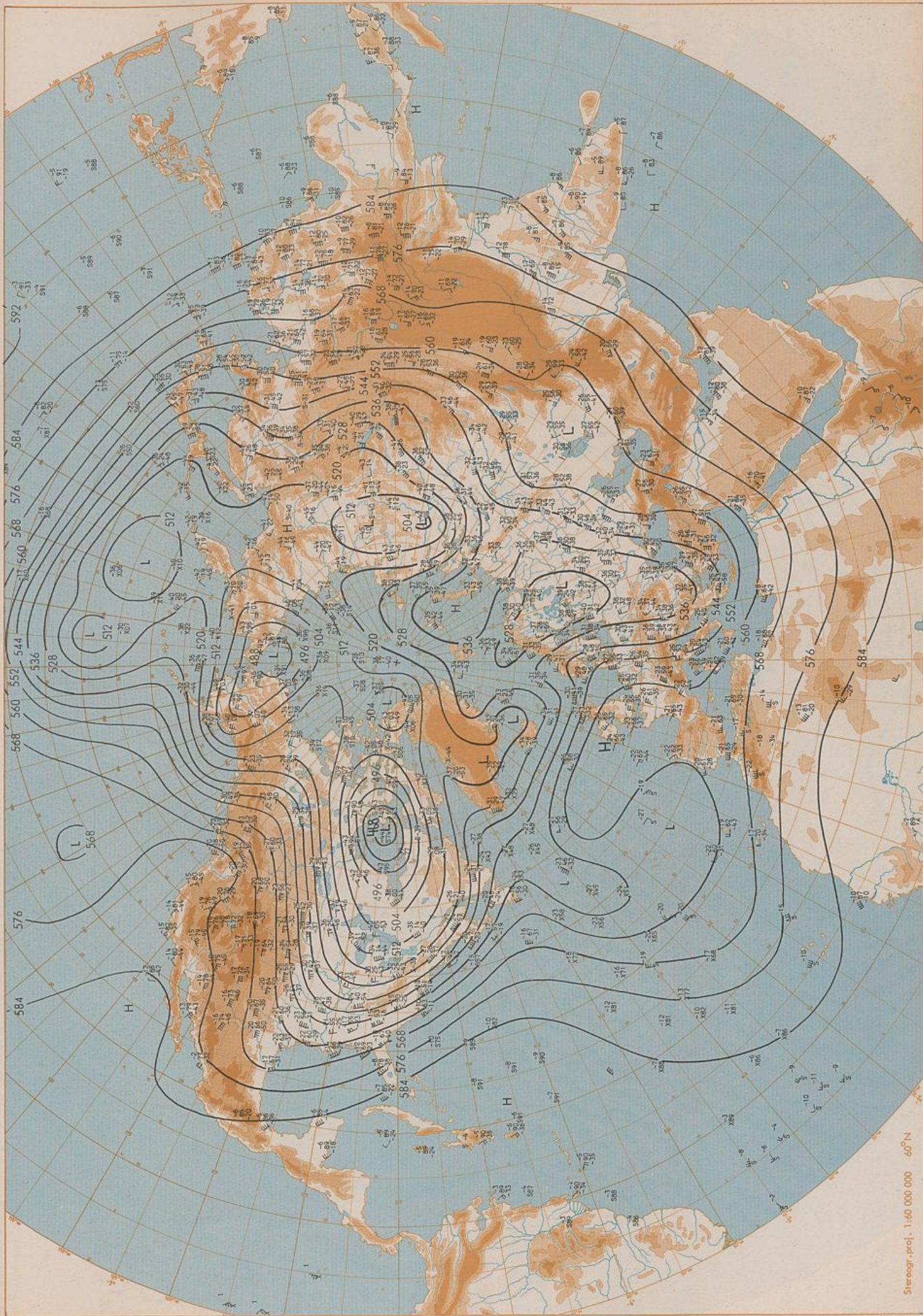
Stereogr. proj., 1:30 000 000 60°N

Surface chart 12 UTC



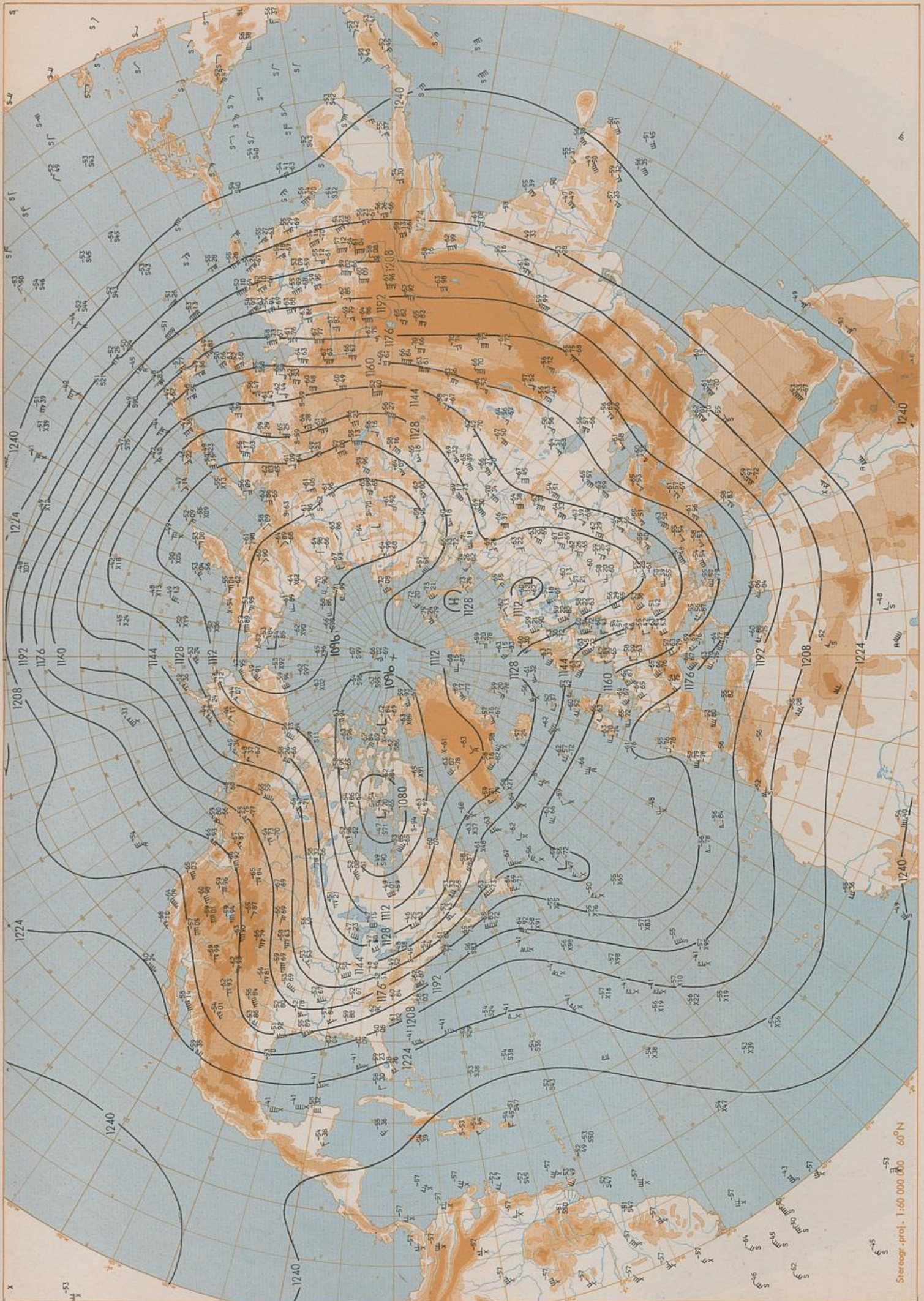
Surface chart 00 UTC

Stereogr. proj. 1:60 000 000 60°N



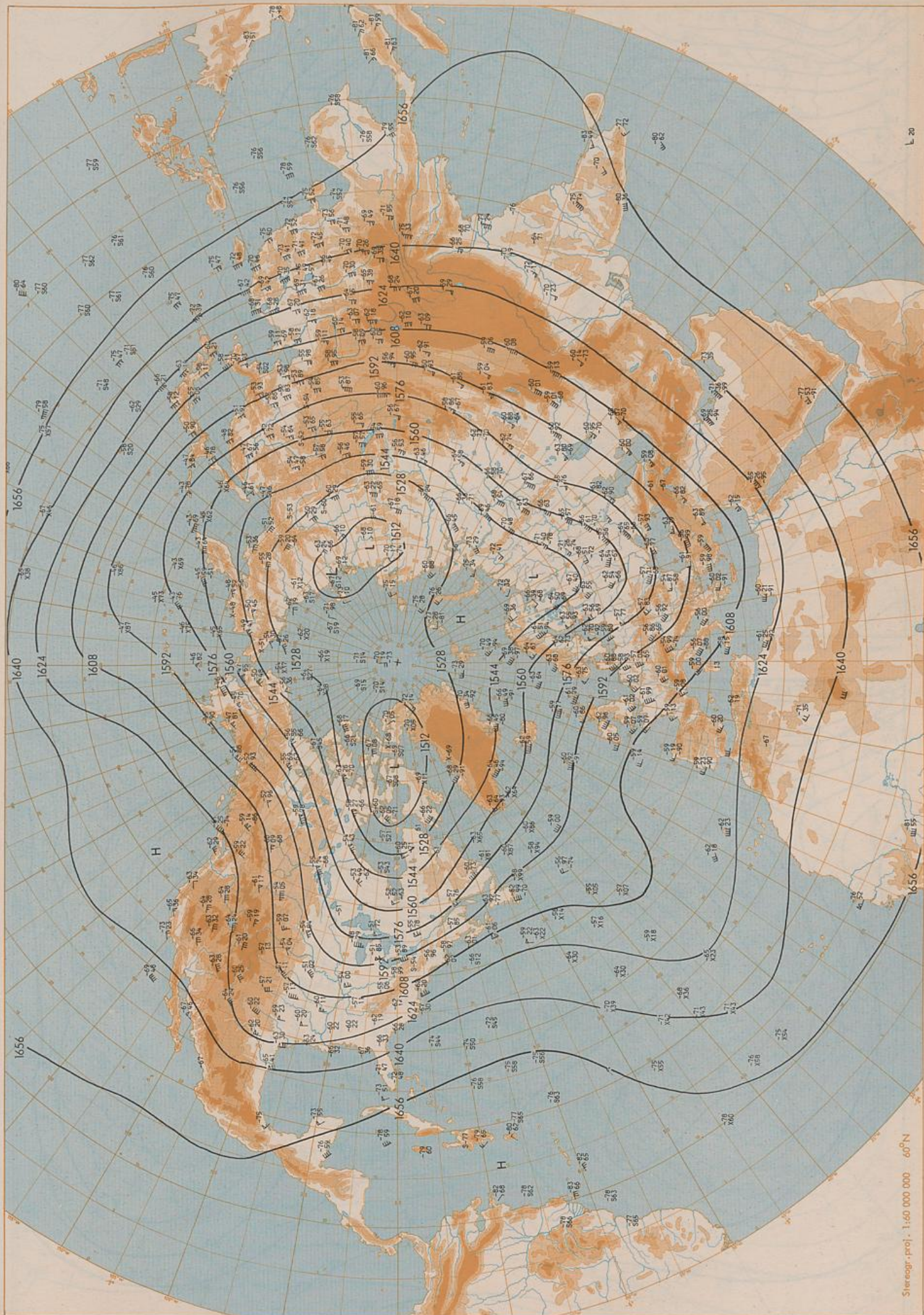
500 hPa 00 UTC

Stereogr. proj. 1:60 000 000 60°N



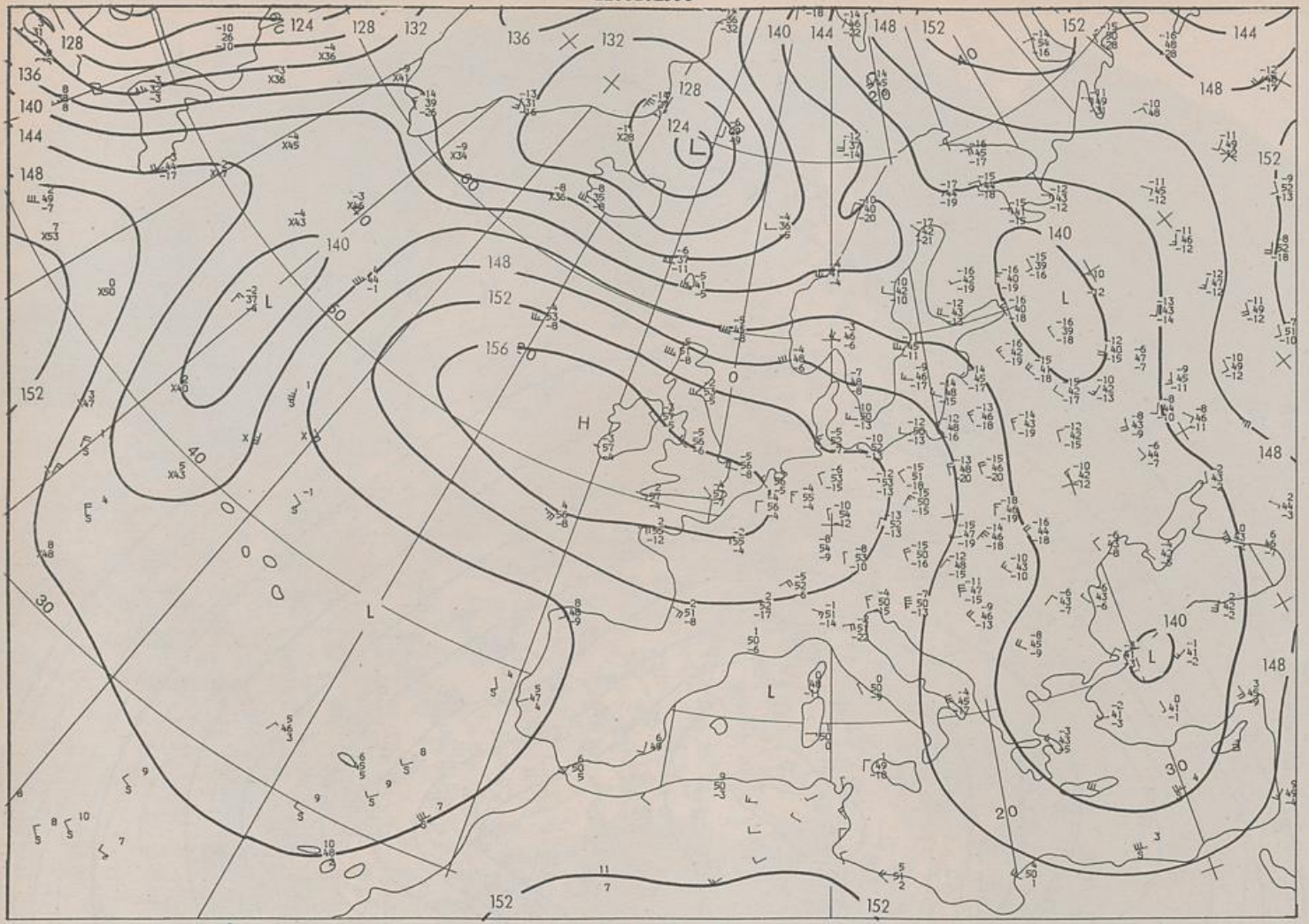
200 hPa 00 UTC

Stereogr. proj. 1:60 000 000 60°N



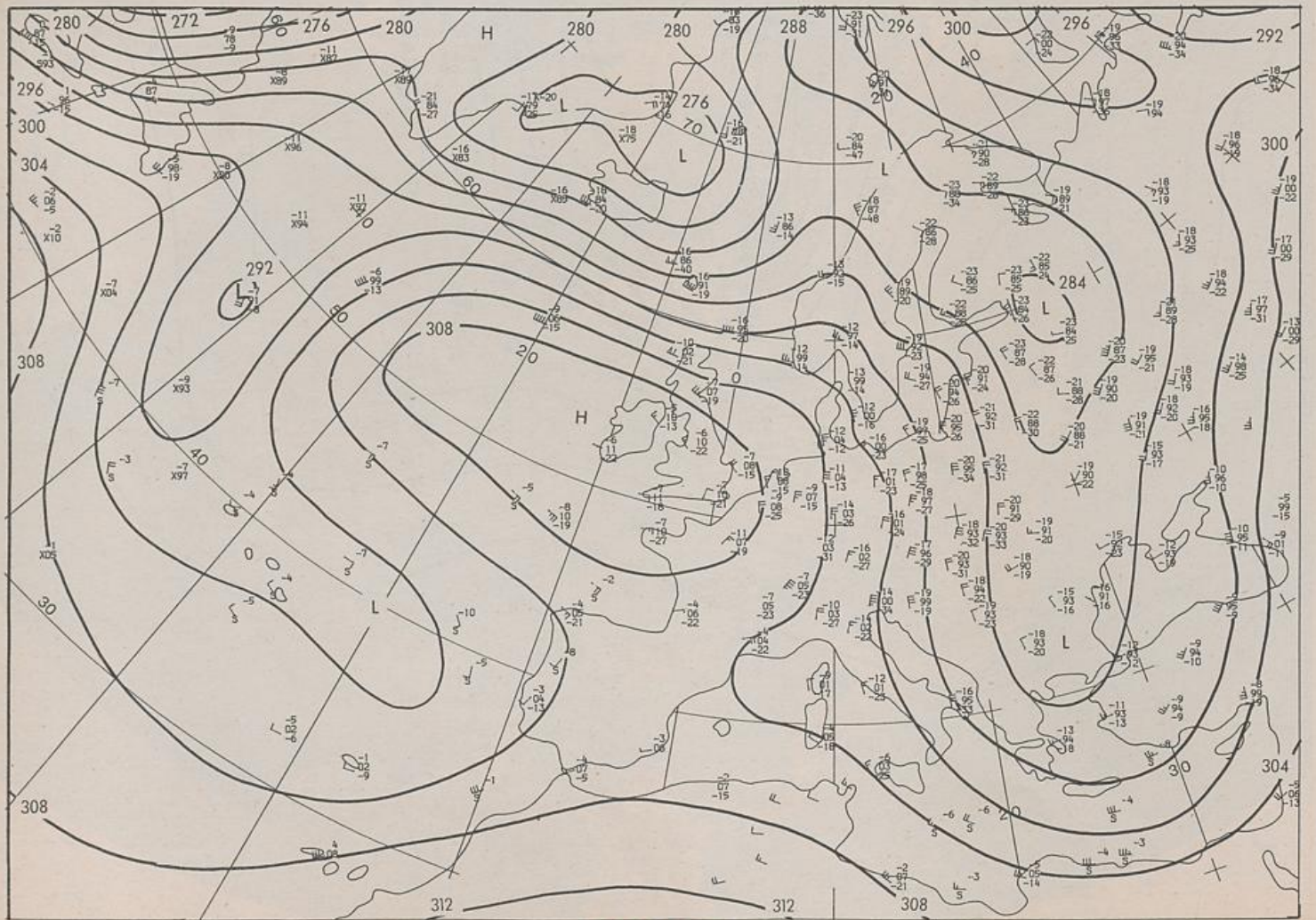
100 hPa 00 UTC

Stereogr. proj. 1:60 000 000 60°N

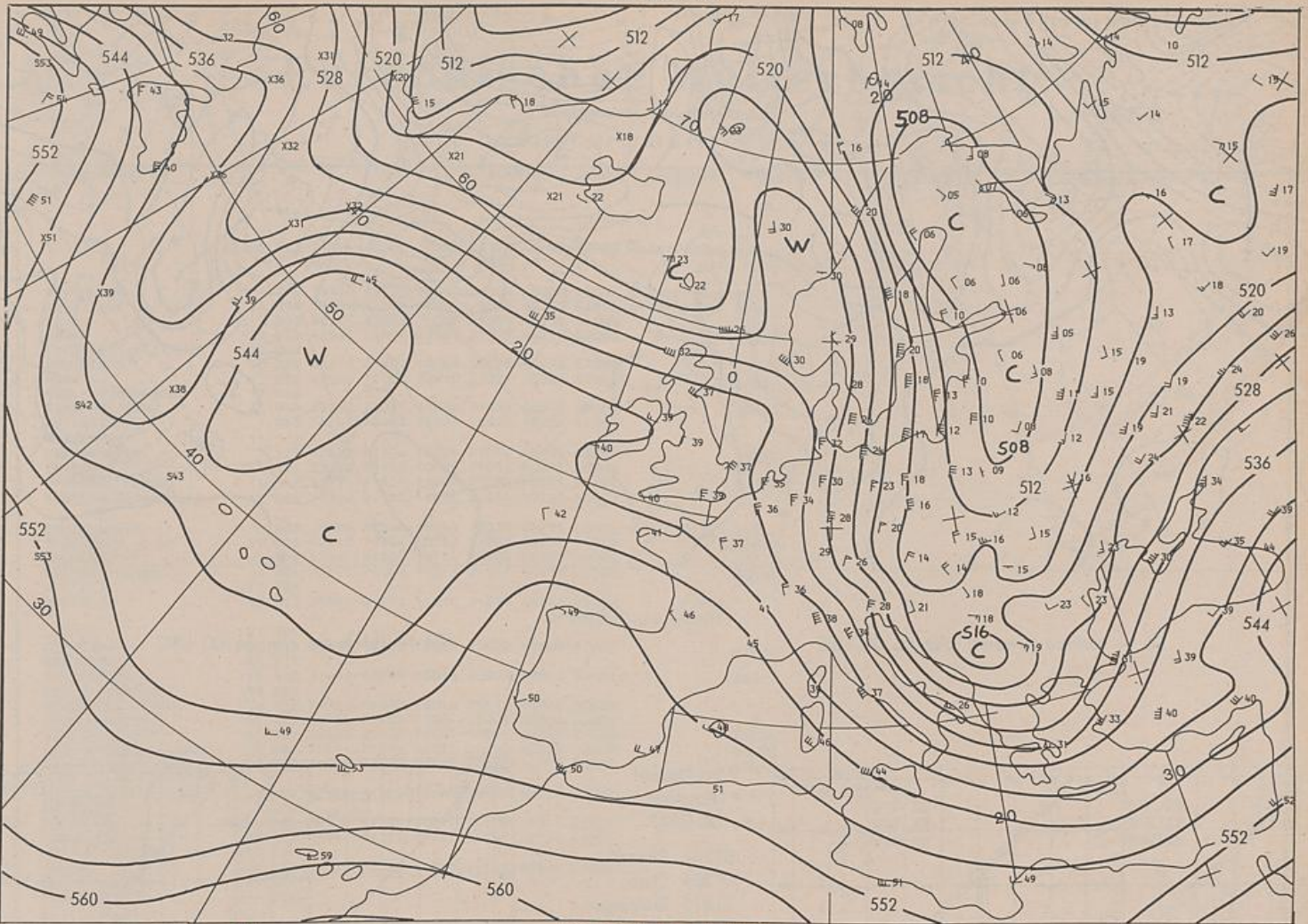


Stereogr. proj. 1:30 000 000 in 60°N

850 hPa 00 UTC

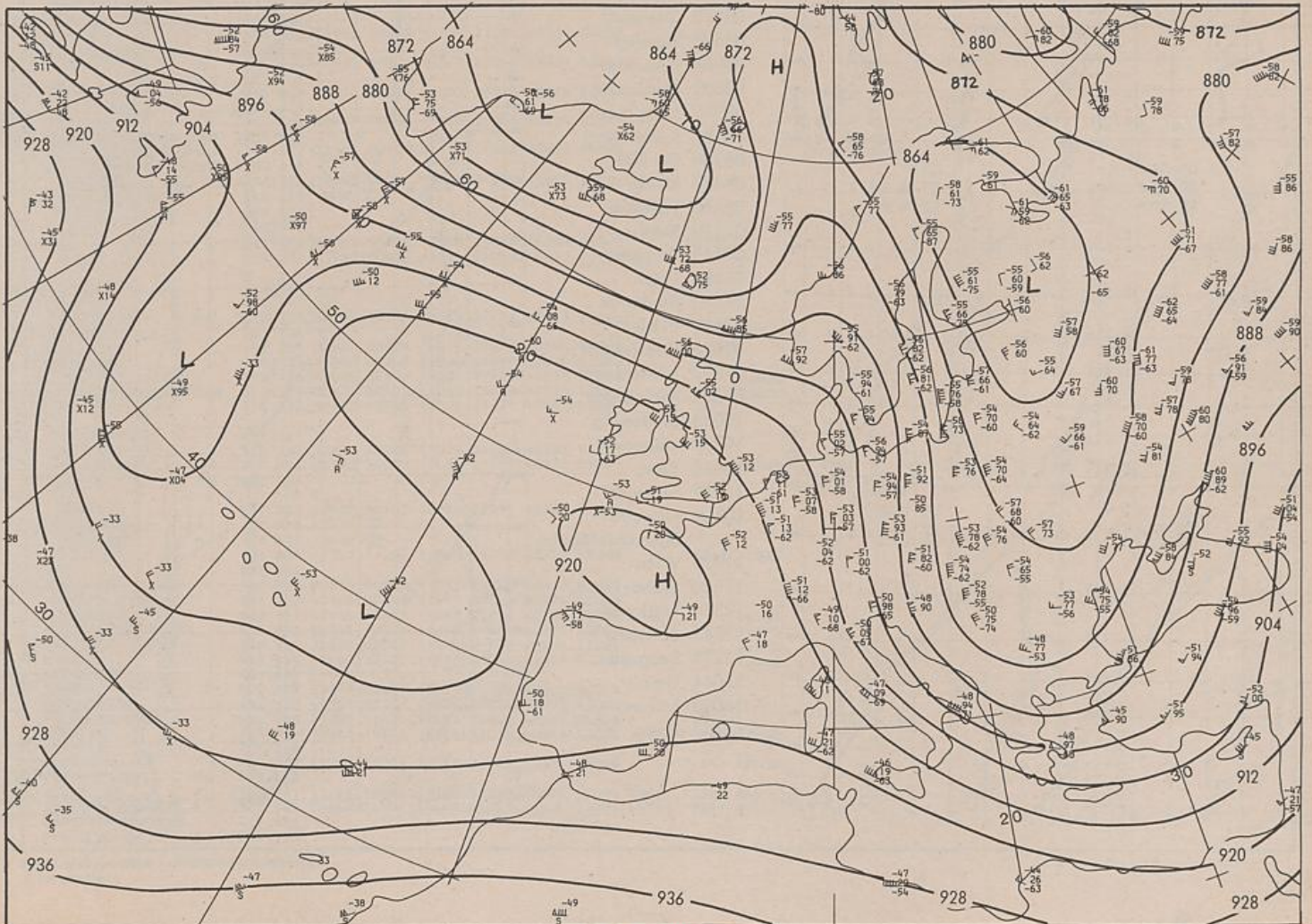


700 hPa 00 UTC

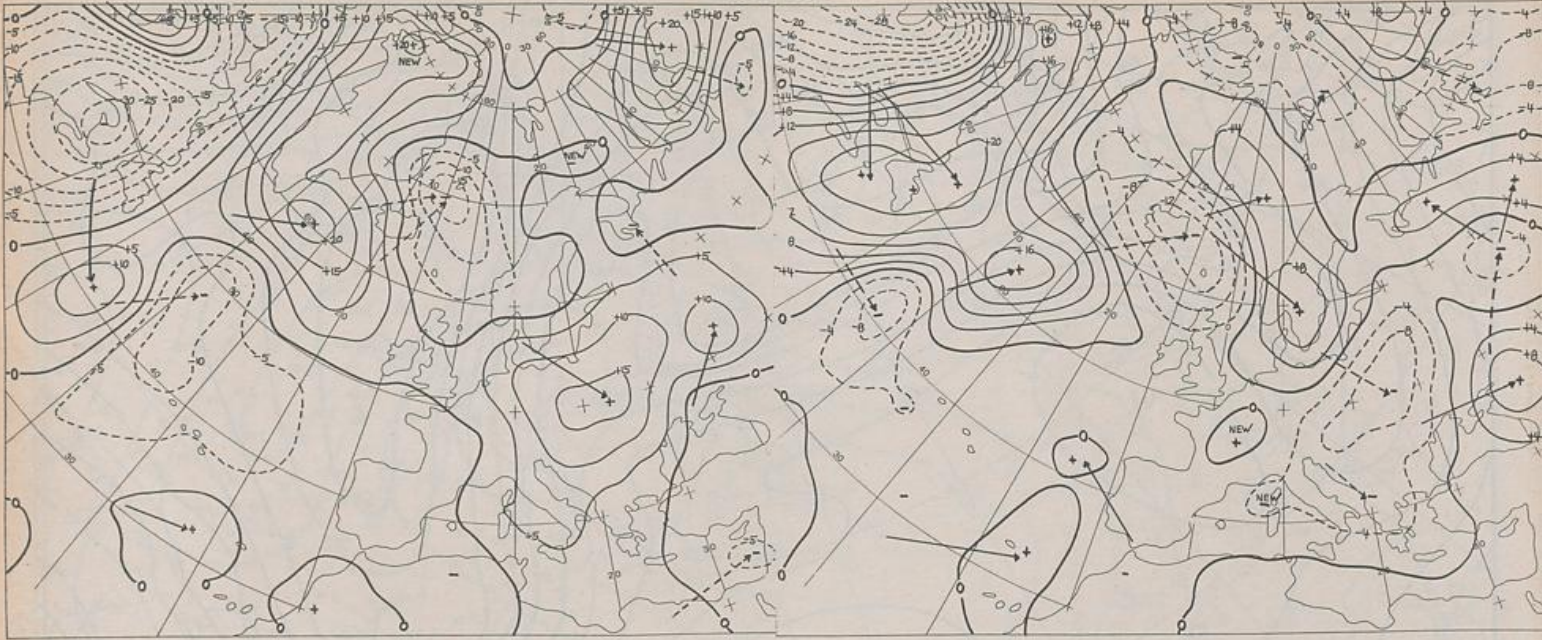


Stereogr. proj. 1:30 000 000 in 60°N

500/1000 hPa 00 UTC



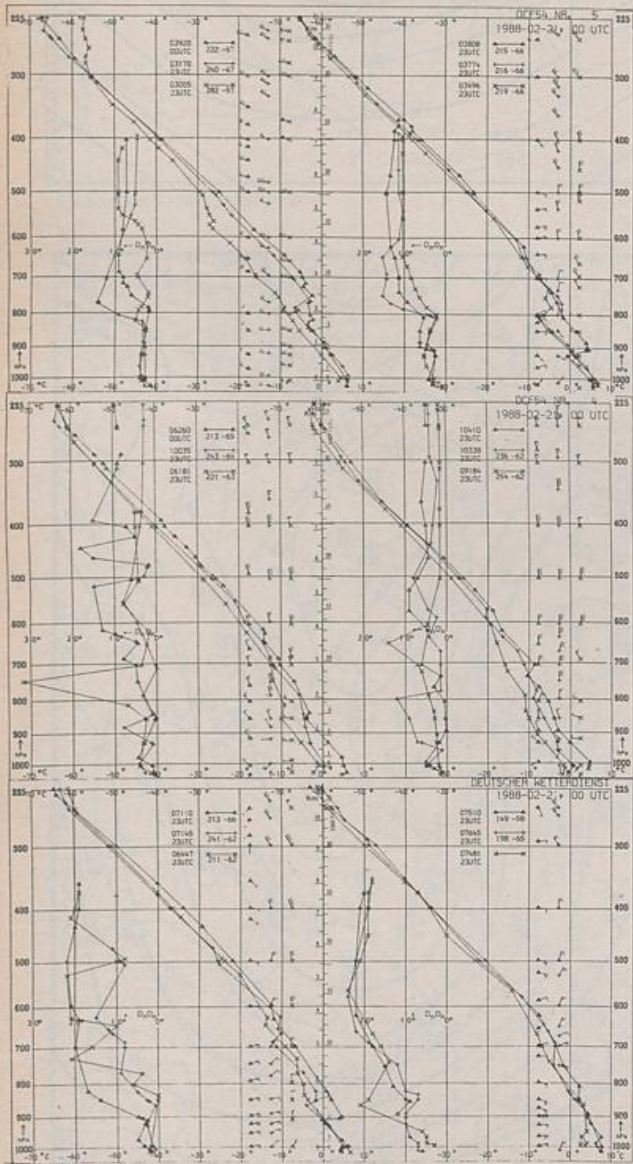
300 hPa 00 UTC



Stereogr. proj. 1:60 000 000

24 hr surface pressure change 00 UTC

24 hr thickness change 00 UTC



Aerological Diagrams 00 GMT

- 01241 Orland
- 01384 Oslo
- 01415 Stavanger
- 02465 Stockholm
- 02527 Goteborg
- 03005 Lerwick
- 03170 Shanwell
- 03496 Hemsby
- 03774 Crawley
- 03808 Camborne
- 03920 Long Kesh
- 06181 Kobenhavn
- 06260 De Bilt
- 06447 Uccle
- 06610 Payame
- 07110 Brest
- 07145 Trappes
- 07481 Lyon
- 07510 Bordeaux
- 07645 Nimes
- 09184 Greifswald
- 09393 Lindenberg
- 09548 Meiningen
- 10035 Schleswig
- 10338 Hannover
- 10410 Essen
- 10739 Stuttgart
- 10868 München-Oberschleißheim
- 11035 Wien
- 11520 Praha-Libus
- 12374 Legionowo
- 12843 Budapest
- 13275 Beograd
- 16044 Udine
- 16080 Milano
- 16242 Roma

