

Europäischer Wetterbericht European Meteorological Bulletin Bulletin Météorologique Européen Boletín Meteorológico Europeo

Amtsblatt des Deutschen Wetterdienstes

Druck und Verlag: Deutscher Wetterdienst - Zentralamt - Frankfurter Straße 135, Postfach 10 04 65, 6050 Offenbach a.M., Tel.: (069) 8 06 20

Erscheint täglich
Bezugspreis monatlich 30,00 DM
zuzügl. Porto
Nachdruck nicht gestattet

Issued daily
Monthly price 30,00 DM
plus postage
All rights reserved

Publié quotidiennement
Prix mensuel 30,00 DM
plus port
Reproduction interdite

Se publica diariamente
Precio de suscripción mensual 30,00 DM
plus porte
Se prohíbe la reproducción

Jahrgang
Volume
Volume
Volumen

14

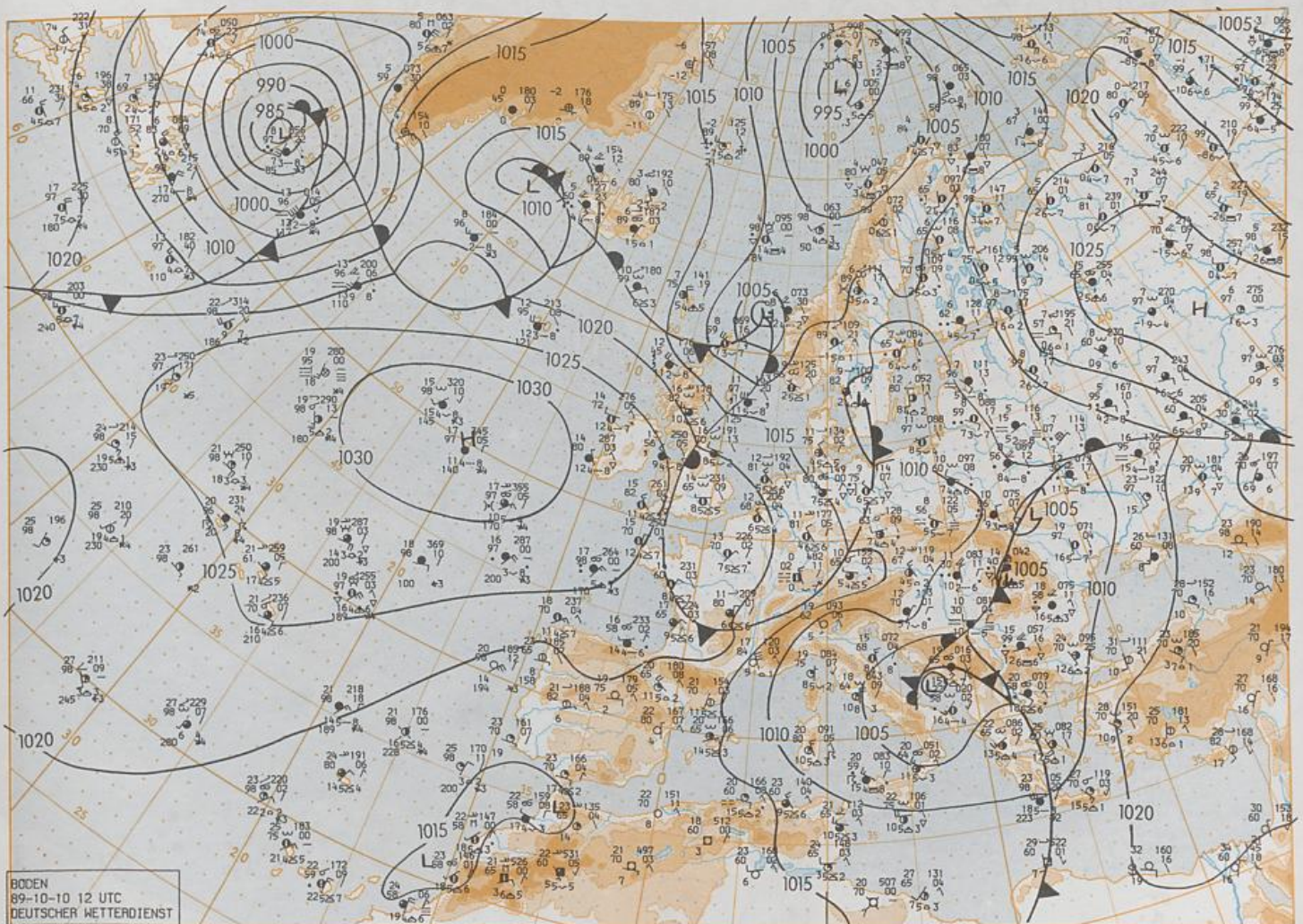
Dienstag
Tuesday
Mardi
Martes

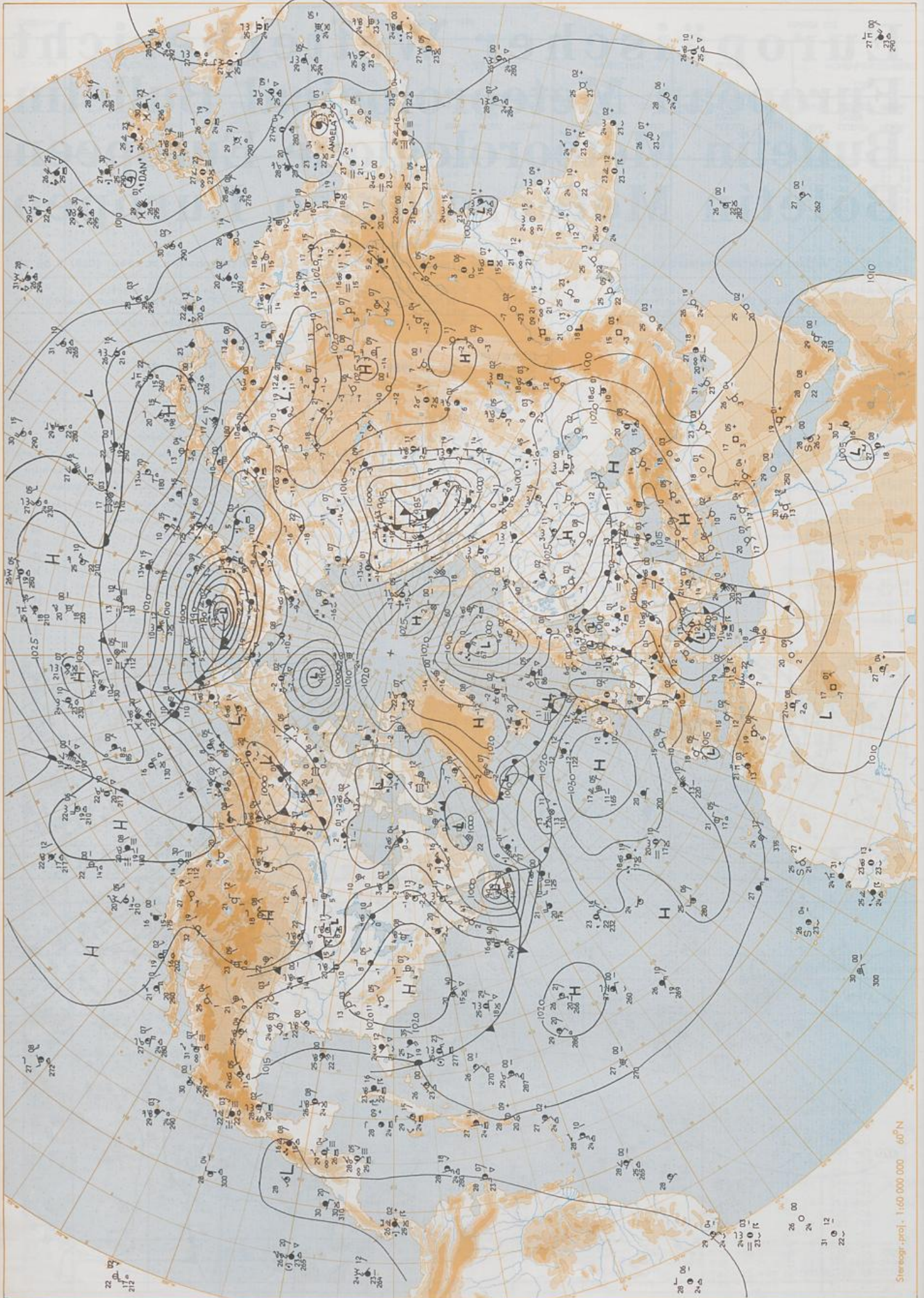
10. 10. 1989

Number
Number
Número
Número

283

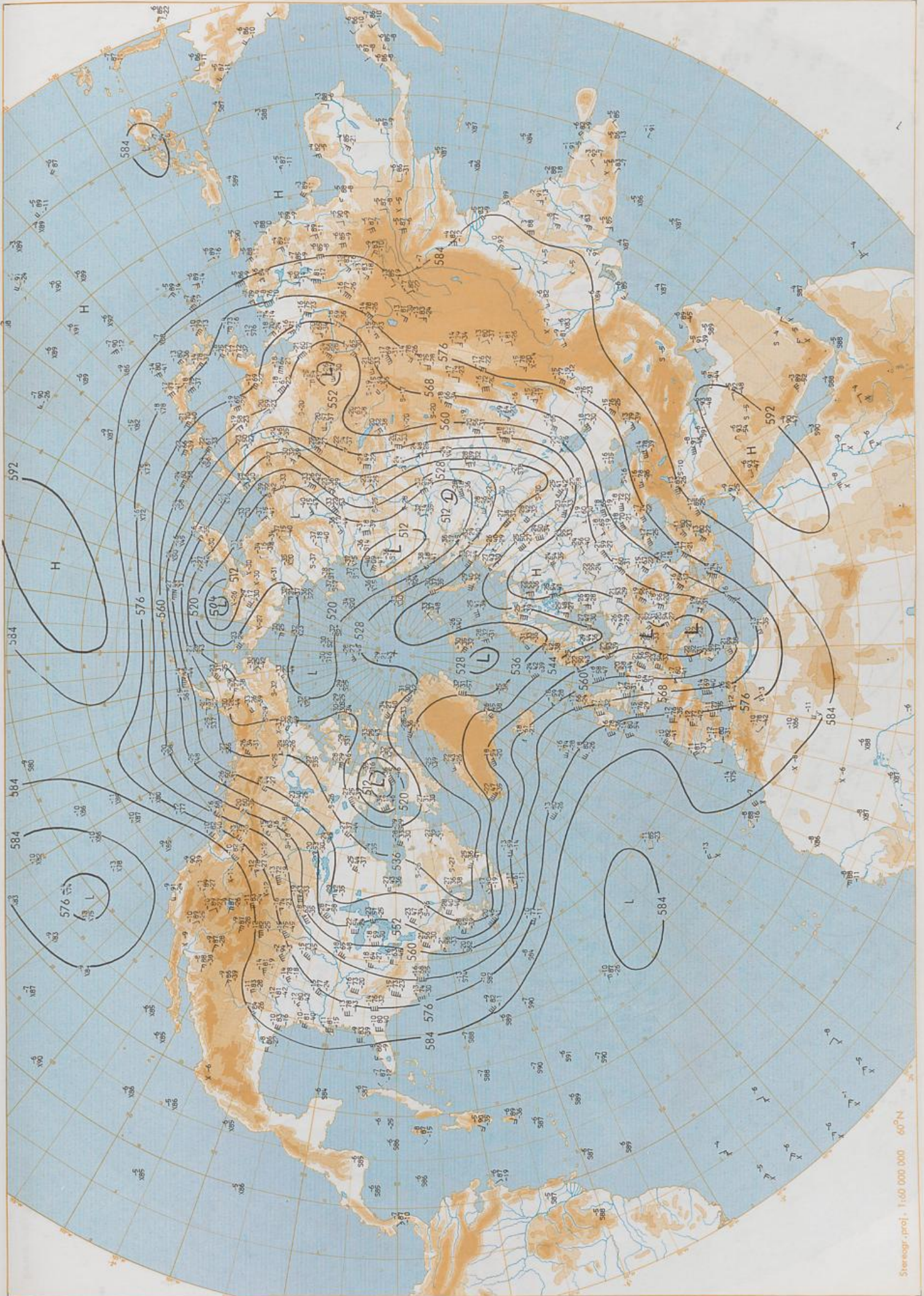
Inhalt	Content	Contenu	Contenido
Bodenwetterkarte 12 UTC	Surface chart 12 UTC	Carte de surface à 12 UTC	Análisis en superficie a las 12 UTC
Bodenwetterkarte Nordhemisphäre 00 UTC	Surface chart northern hemisphere 00 UTC	Carte de surface sur l'hémisphère nord à 00 UTC	Análisis en superficie hemisferio norte a las 00 UTC
500 - hPa-Fläche Nordhemisphäre 00 UTC	500 hPa surface northern hemisphere 00 UTC	Surface 500 hPa sur l'hémisphère nord à 00 UTC	Topografía de la superficie de 500 hPa hemisferio norte de las 00 UTC
200 - hPa-Fläche Nordhemisphäre 00 UTC	200 hPa surface northern hemisphere 00 UTC	Surface 200 hPa sur l'hémisphère nord à 00 UTC	Topografía de la superficie de 200 hPa hemisferio norte de las 00 UTC
100 - hPa-Fläche Nordhemisphäre 00 UTC	100 hPa surface northern hemisphere 00 UTC	Surface 100 hPa sur l'hémisphère nord à 00 UTC	Topografía de la superficie de 100 hPa hemisferio norte de las 00 UTC
850 - hPa 00 UTC, 700 hPa 00 UTC	850 hPa 00 UTC, 700 hPa 00 UTC	850 hPa 00 UTC, 700 hPa 00 UTC	850 hPa 00 UTC, 700 hPa 00 UTC
Relative Topographie 500/1000 hPa 00 UTC	Thickness chart 500/1000 hPa 00 UTC	Carte d'épaisseur 500/1000 hPa 00 UTC	Relativa 500/1000 hPa 00 UTC
300 - hPa 00 UTC	300 hPa 00 UTC	300 hPa 00 UTC	300 hPa 00 UTC
24stg. Bodenänderung 00 UTC	24 hr surface pressure change 00 UTC	Variations de pression en 24 h (niveau mer) en hPa à 00 UTC	Variación de la presión del suelo 24 h en hPa a las 00 UTC
24stg. Änderung relative Topographie 500/1000 hPa 00 UTC	24 hr thickness change 500/1000 hPa 00 UTC	Variations d'épaisseur 500/1000 hPa en 24 h 00 UTC	Variación de espesor 500/1000 hPa en 24 h 00 UTC
Aerologische Diagramme 00 UTC	Aerological diagrams 00 UTC	Diagrammes aérologiques 00 UTC	Diagramas aerológicos 00 UTC





Surface chart 00 UTC

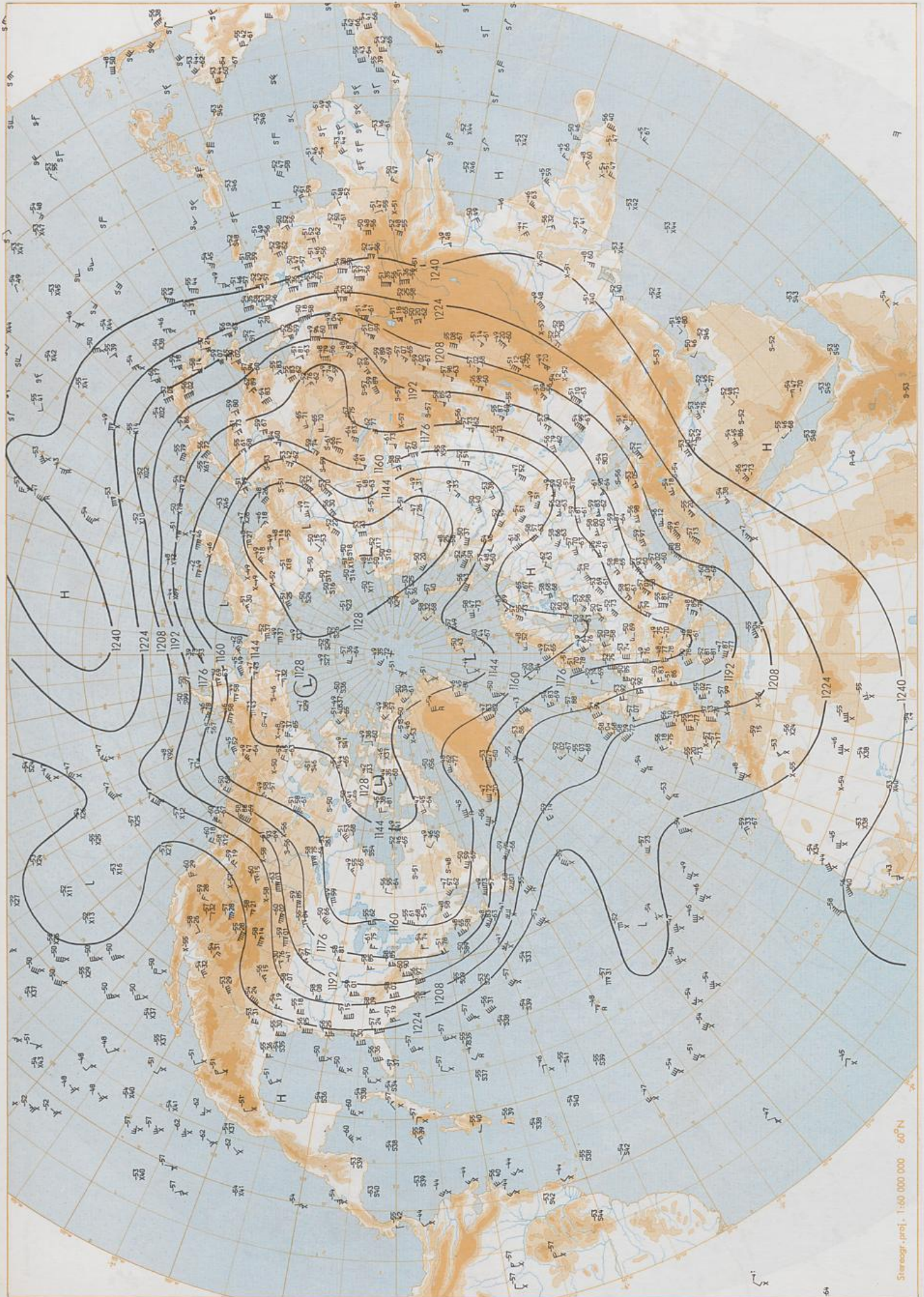
Stereogr.-proj. 1:60 000 000 60°N



500 hPa 00 UTC

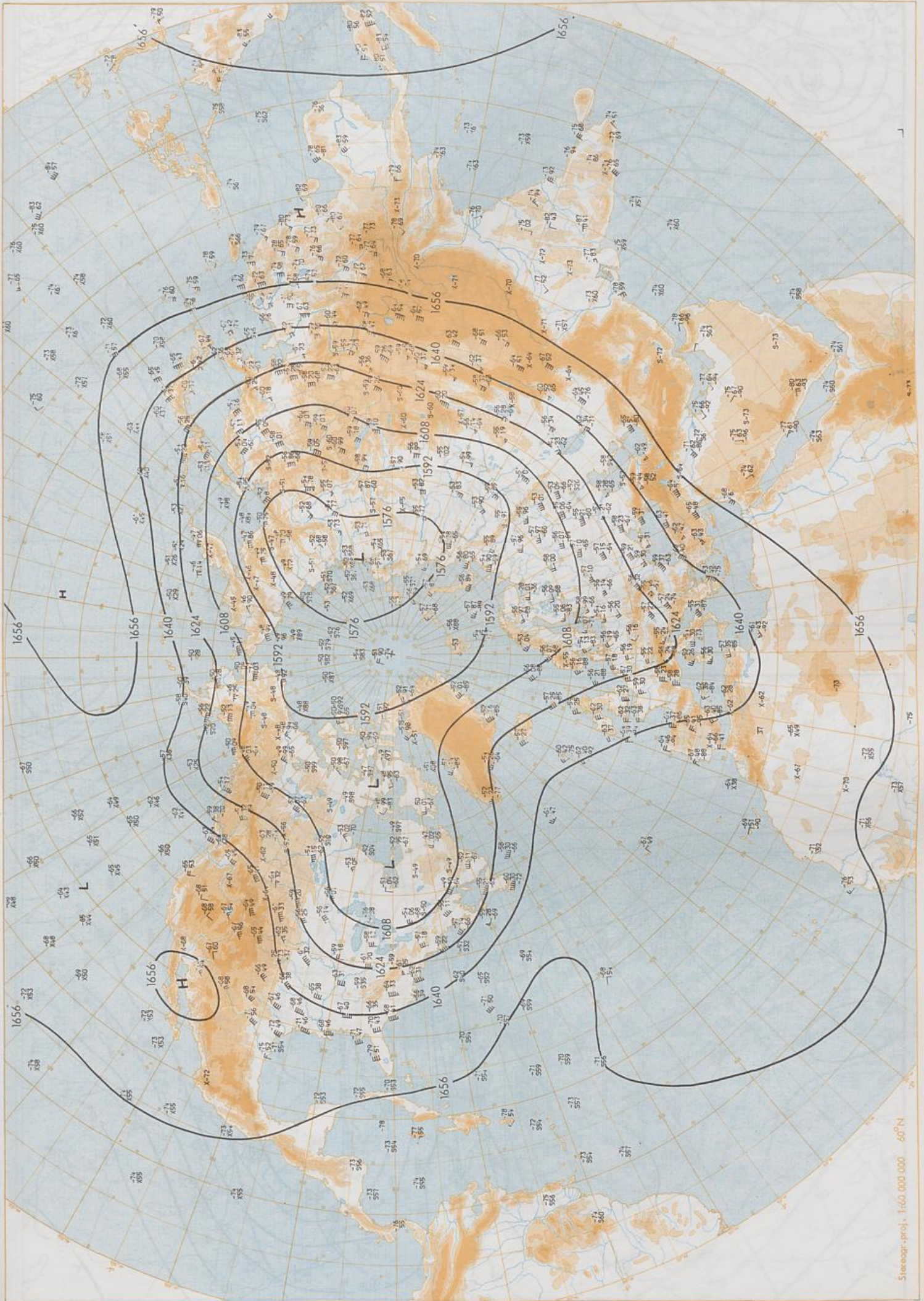
Stereogr. proj. 1:60 000 000 60°N

10.10.1989



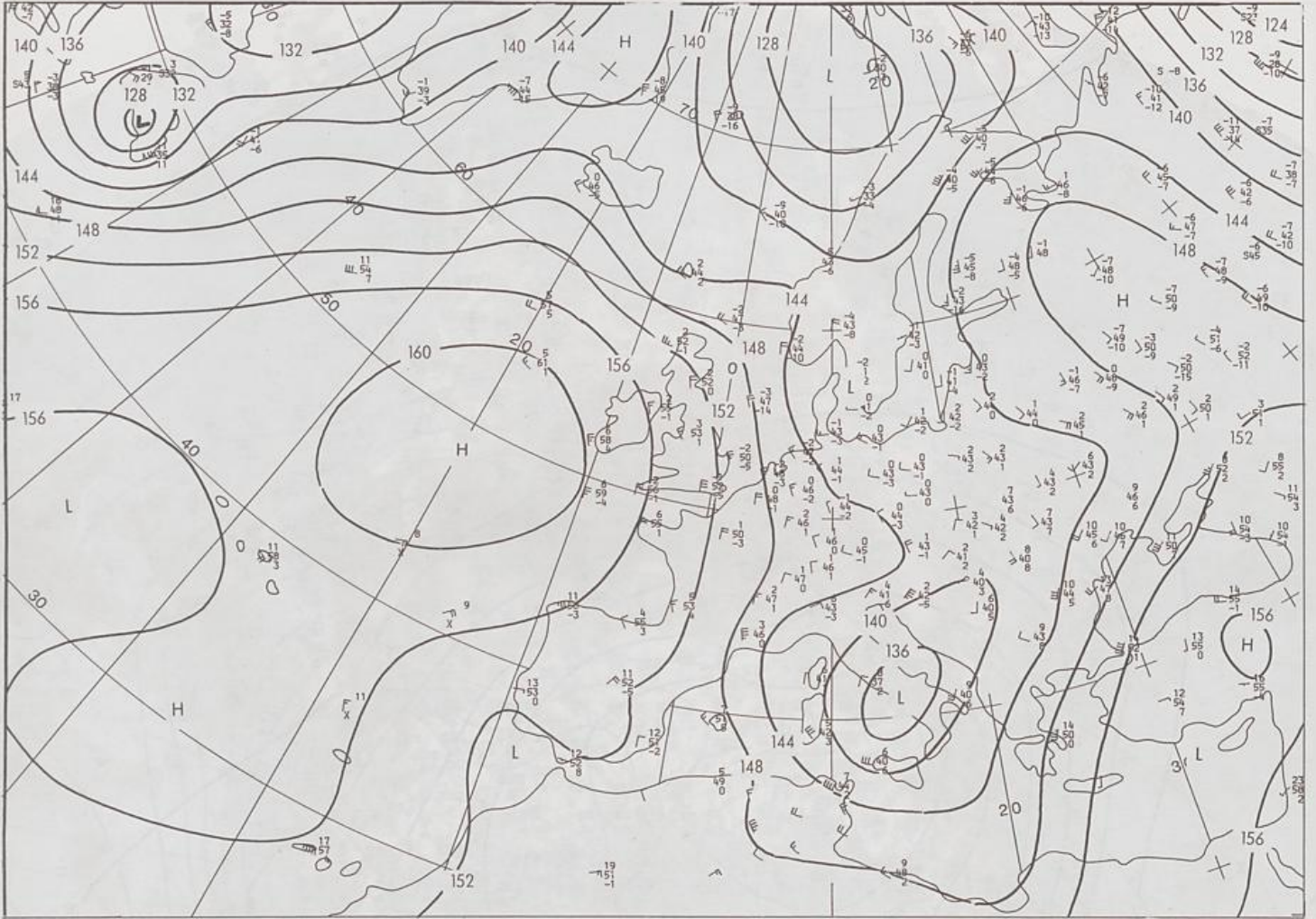
200 hPa 00 UTC

Stereogr. proj. 1:60 000 000 60°N



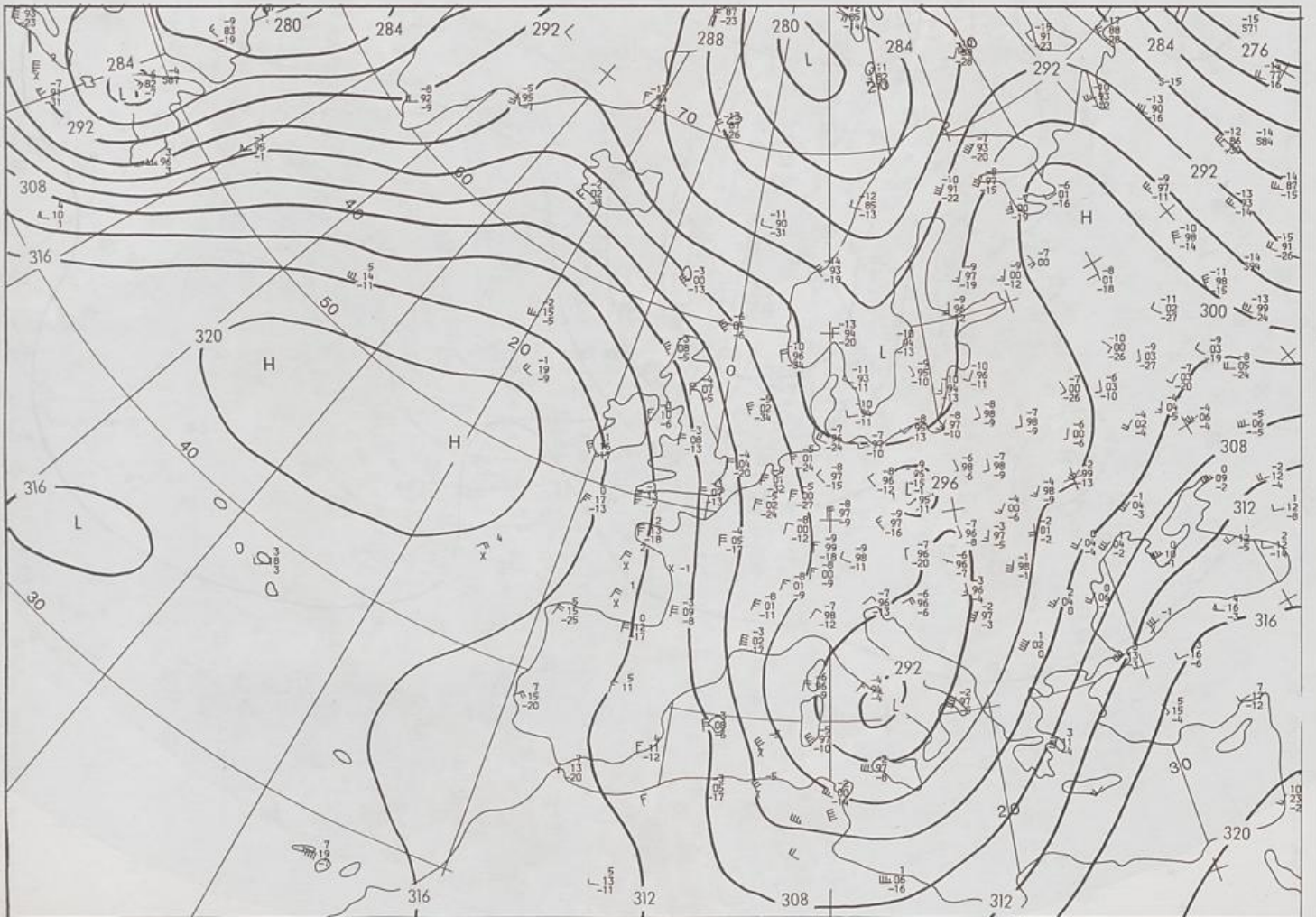
100 hPa 00 UTC

10.10.1989

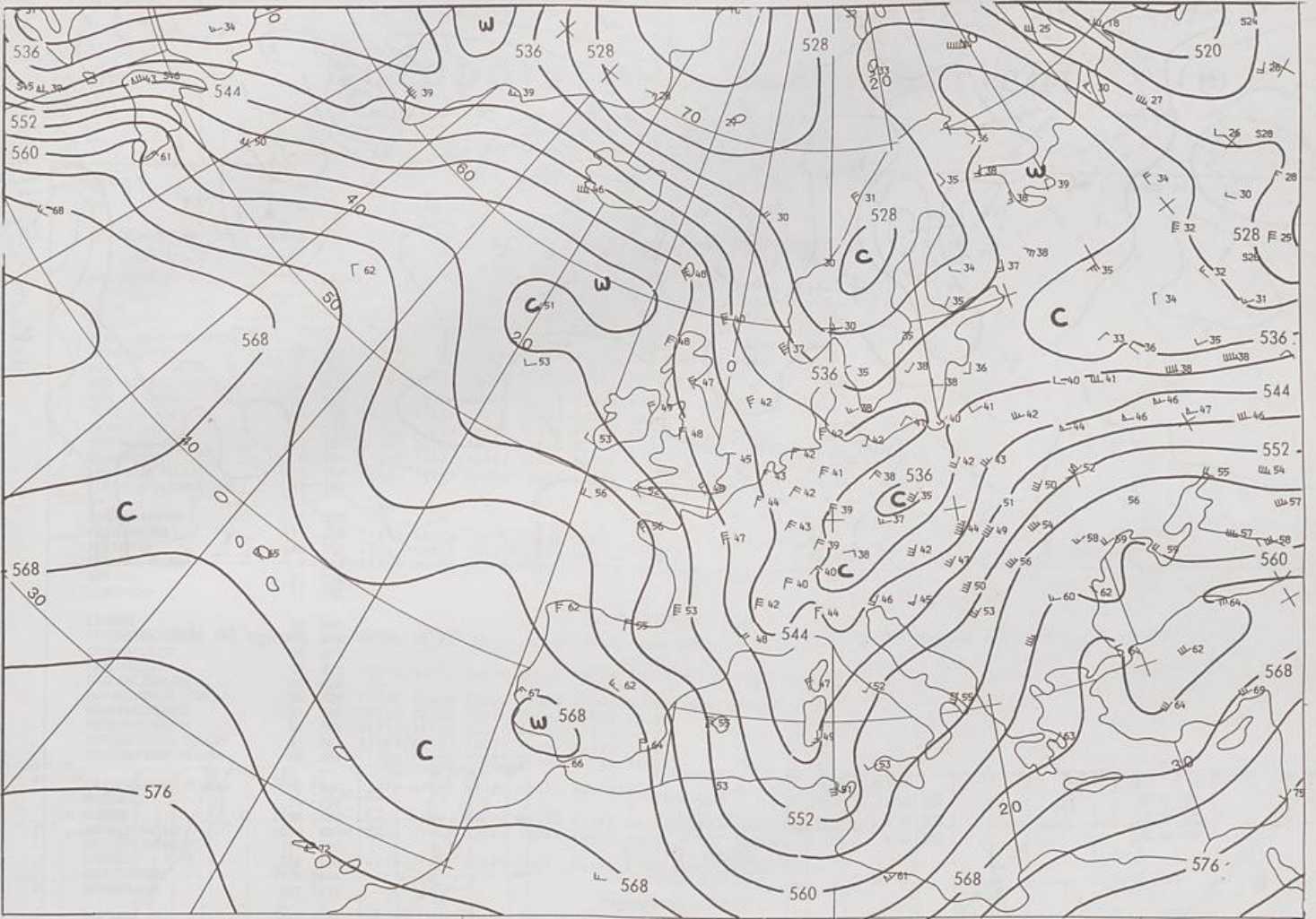


Stereogr. proj. 1:30 000 000 h 60°N

850 hPa 00 UTC

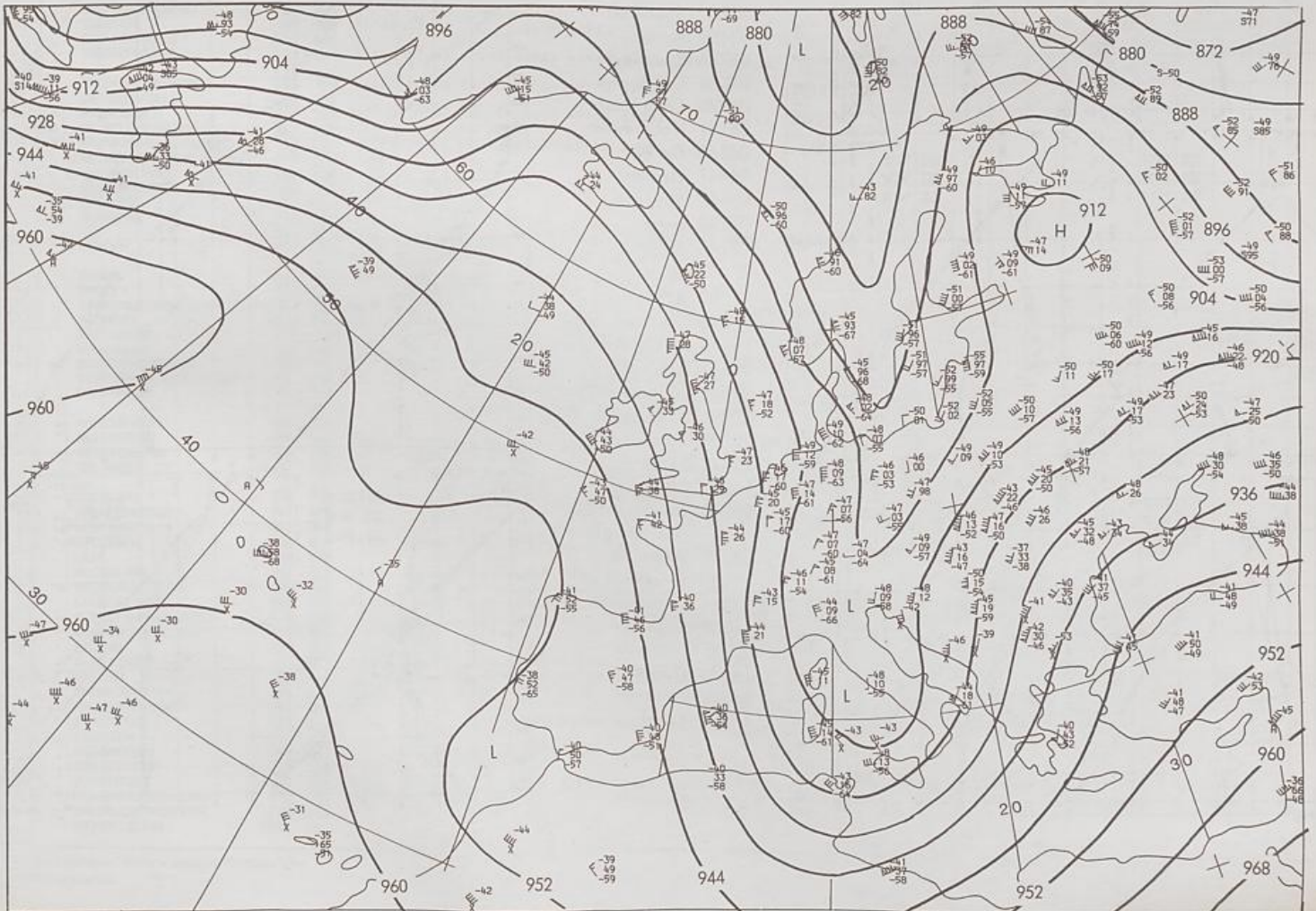


700 hPa 00 UTC

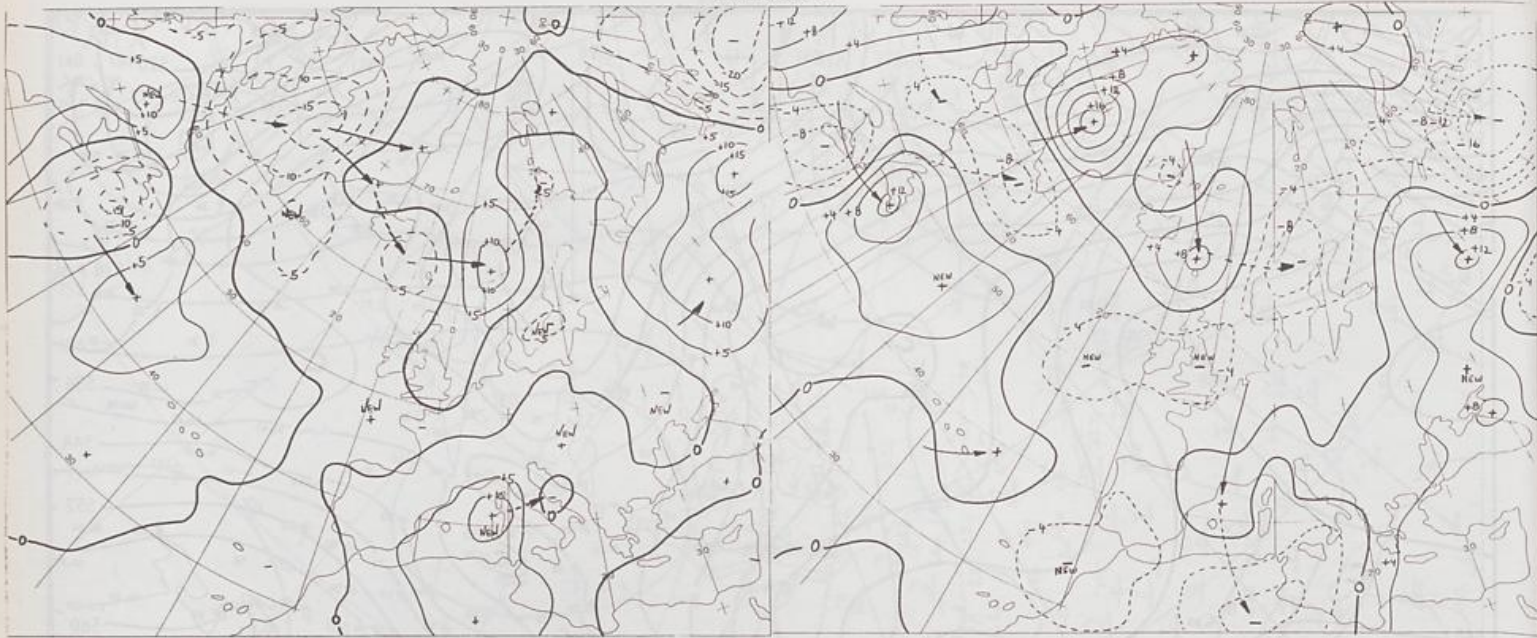


Stereogr. proj. 1:30 000 000 in 60°N

500/1000 hPa 00 UTC



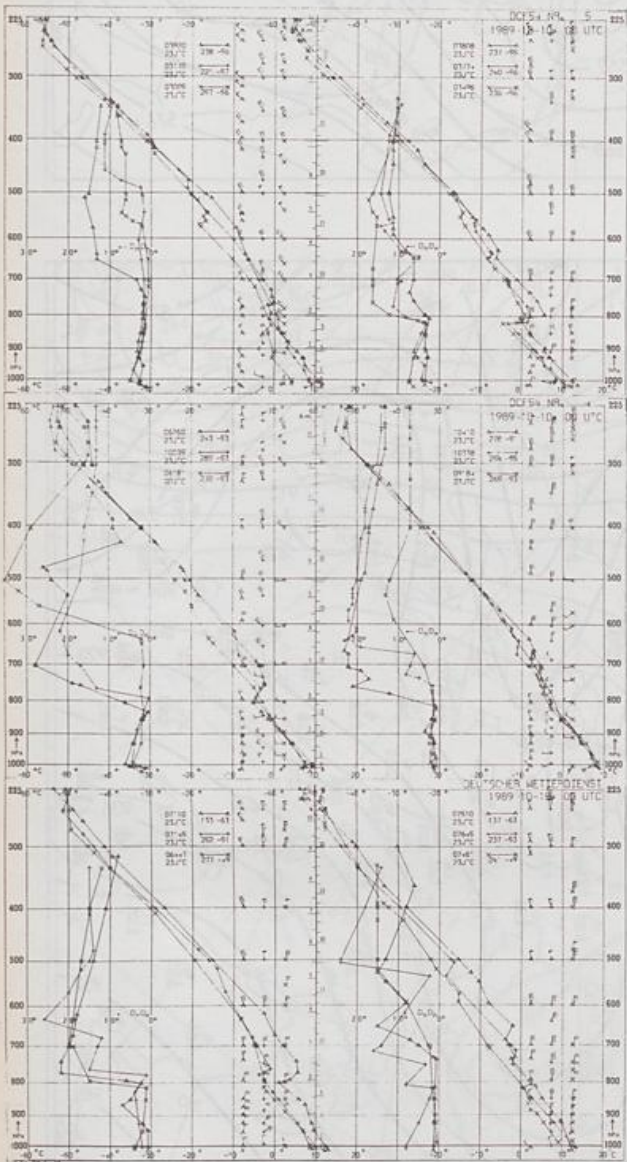
300 hPa 00 UTC



Stereogr. proj. 1:60 000 000

24 hr surface pressure change 00 UTC

24 hr thickness change 00 UTC



Aerological Diagrams 00 GMT

- 01241 Orland
- 01384 Oslo
- 01415 Stavanger
- 02465 Stockholm
- 02527 Goteborg
- 03005 Lerwick
- 03170 Stanwell
- 03496 Hemsby
- 03774 Crawley
- 03808 Camborne
- 03920 Long Kesh
- 06181 Kobenhavn
- 06260 De Bilt
- 06447 Uccle
- 06610 Payrne
- 07110 Brest
- 07145 Trappes
- 07481 Lyon
- 07510 Bordeaux
- 07645 Nimes
- 09184 Greifswald
- 09393 Lindenberg
- 09548 Meiningen
- 10035 Schleswig
- 10338 Hannover
- 10410 Essen
- 10739 Stuttgart
- 10868 München-Oberschleißheim
- 11035 Wien
- 11520 Praha-Libus
- 12374 Legionowo
- 12843 Budapest
- 13275 Beograd
- 16044 Udine
- 16080 Milano
- 16242 Roma

