

Europäischer Wetterbericht European Meteorological Bulletin Bulletin Météorologique Européen Boletín Meteorológico Europeo

Amtsblatt des Deutschen Wetterdienstes

Druck und Verlag: Deutscher Wetterdienst - Zentralamt - Frankfurter Straße 135, Postfach 10 04 65, 6050 Offenbach a.M., Tel.: (069) 8 06 20

Erscheint täglich
Bezugspreis monatlich 30,00 DM
zuzügl. Porto
Nachdruck nicht gestattet

Issued daily
Monthly price 30,00 DM
plus postage
All rights reserved

Publié quotidiennement
Prix mensuel 30,00 DM
plus port
Reproduction interdite

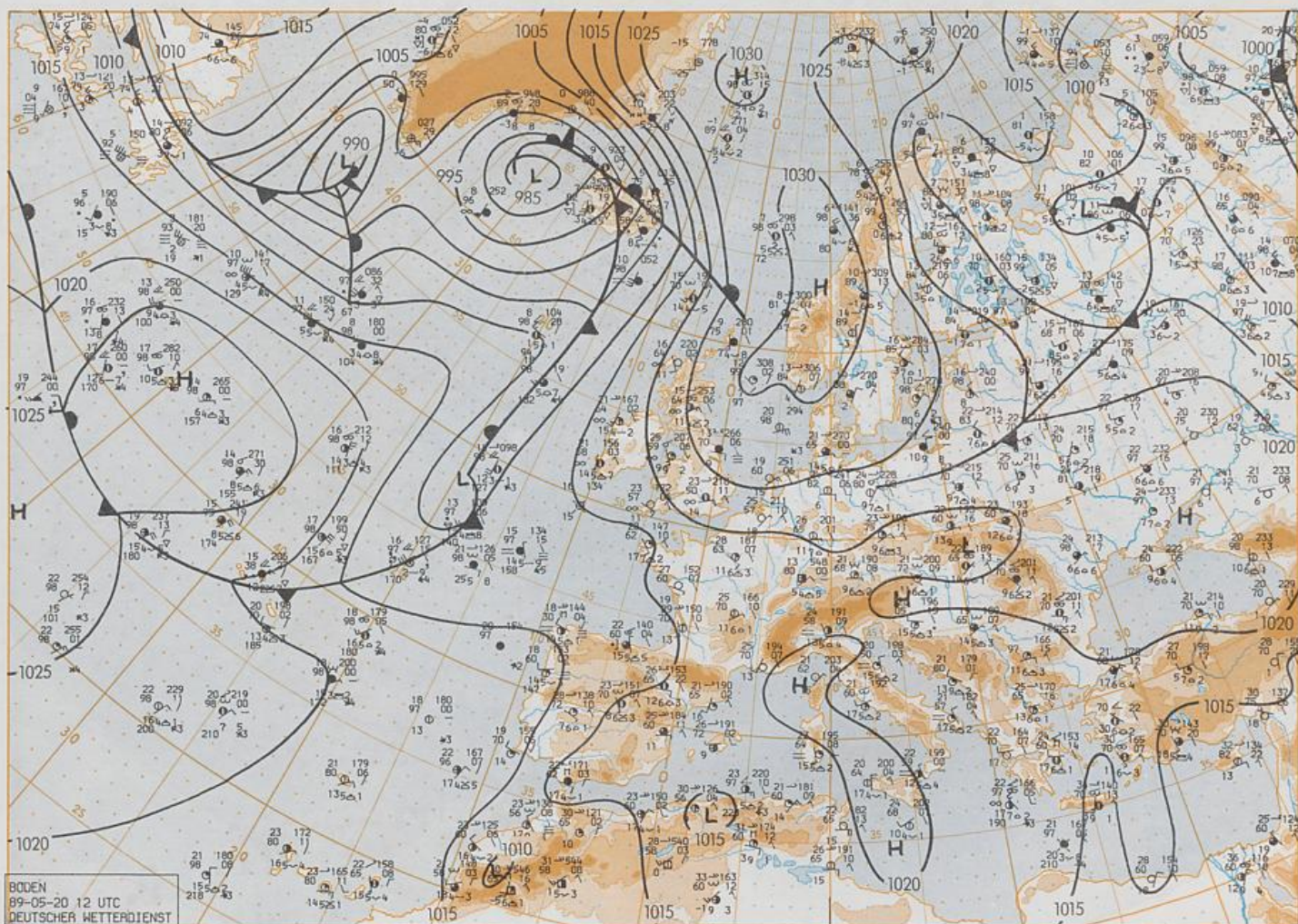
Se publica diariamente
Precio de suscripción mensual 30,00 DM
plus porte
Se prohíbe la reproducción

Jahrgang
Volume 14
Volume
Volumen

Samstag
Saturday 20.05.1989
Samedi
Sábado

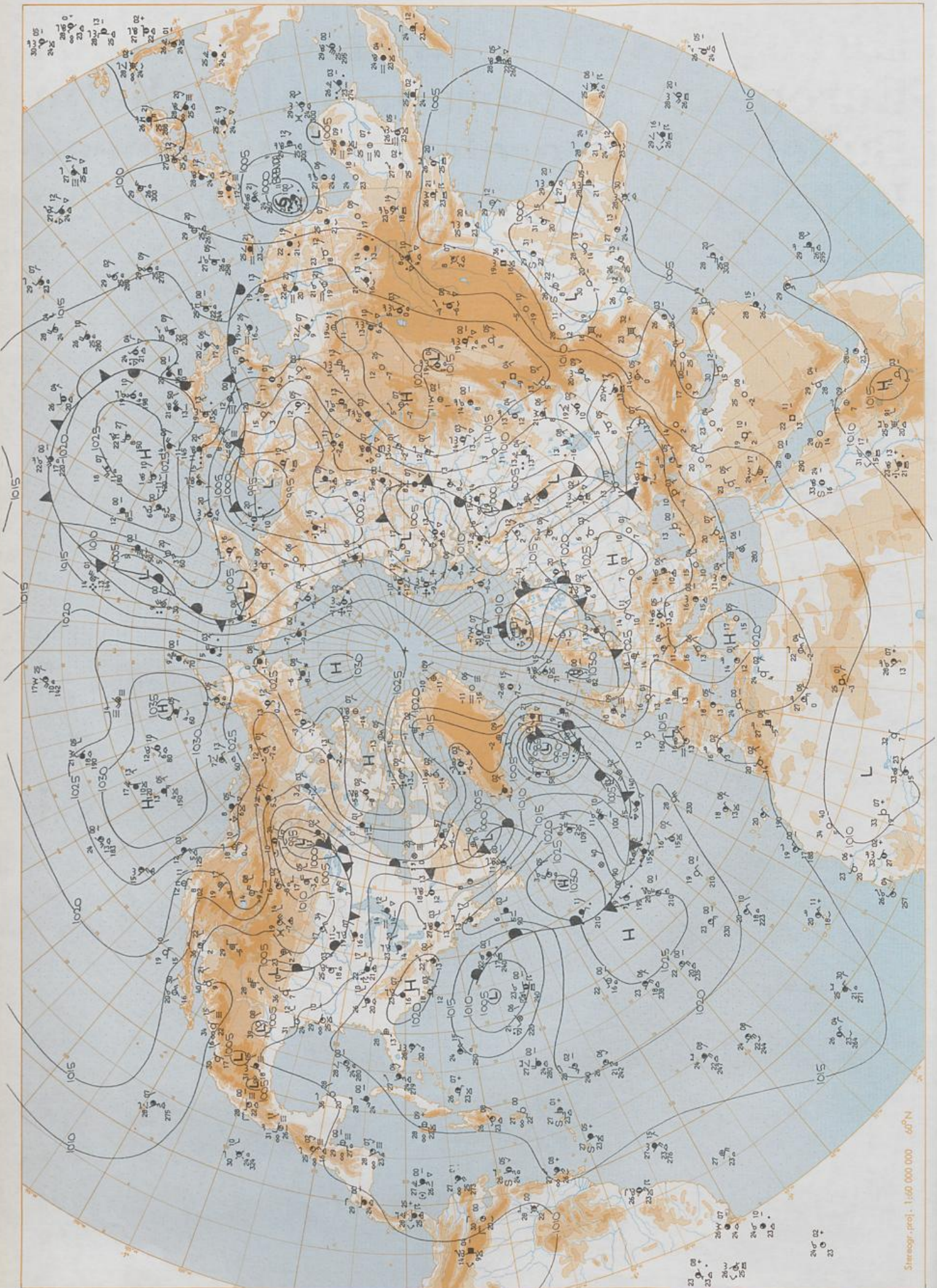
Nummer
Number 140
Número
Número

| Inhalt | Content | Contenu | Contenido |
|--|--|---|---|
| Bodenwetterkarte 12 UTC | Surface chart 12 UTC | Carte de surface à 12 UTC | Análisis en superficie a las 12 UTC |
| Bodenwetterkarte Nordhemisphäre 00 UTC | Surface chart northern hemisphere 00 UTC | Carte de surface sur l'hémisphère nord à 00 UTC | Análisis en superficie hemisferio norte a las 00 UTC |
| 500 - hPa-Fläche Nordhemisphäre 00 UTC | 500 hPa surface northern hemisphere 00 UTC | Surface 500 hPa sur l'hémisphère nord à 00 UTC | Topografía de la superficie de 500 hPa hemisferio norte de las 00 UTC |
| 200 - hPa-Fläche Nordhemisphäre 00 UTC | 200 hPa surface northern hemisphere 00 UTC | Surface 200 hPa sur l'hémisphère nord à 00 UTC | Topografía de la superficie de 200 hPa hemisferio norte de las 00 UTC |
| 100 - hPa-Fläche Nordhemisphäre 00 UTC | 100 hPa surface northern hemisphere 00 UTC | Surface 100 hPa sur l'hémisphère nord à 00 UTC | Topografía de la superficie de 100 hPa hemisferio norte de las 00 UTC |
| 850 - hPa 00 UTC, 700 hPa 00 UTC | 850 hPa 00 UTC, 700 hPa 00 UTC | 850 hPa 00 UTC, 700 hPa 00 UTC | 850 hPa 00 UTC, 700 hPa 00 UTC |
| Relative Topographie 500/1000 hPa 00 UTC | Thickness chart 500/1000 hPa 00 UTC | Carte d'épaisseur 500/1000 hPa 00 UTC | Relative 500/1000 hPa 00 UTC |
| 300 - hPa 00 UTC | 300 hPa 00 UTC | 300 hPa 00 UTC | 300 hPa 00 UTC |
| 24stg. Bodenänderung 00 UTC | 24 hr surface pressure change 00 UTC | Variations de pression en 24 h (niveau mer) en hPa à 00 UTC | Variación de la presión del suelo 24 h en hPa a las 00 UTC |
| 24stg. Änderung relative Topographie | 24 hr thickness change | Variations d'épaisseur 500/1000 hPa en 24 h 00 UTC | Variación de espesor 500/1000 hPa en 24 h 00 UTC |
| 500/1000 hPa 00 UTC | 500/1000 hPa 00 UTC | | |
| Aerologische Diagramme 00 UTC | Aerological diagrams 00 UTC | Diagrammes aérologiques 00 UTC | Diagramas aerológicos 00 UTC |



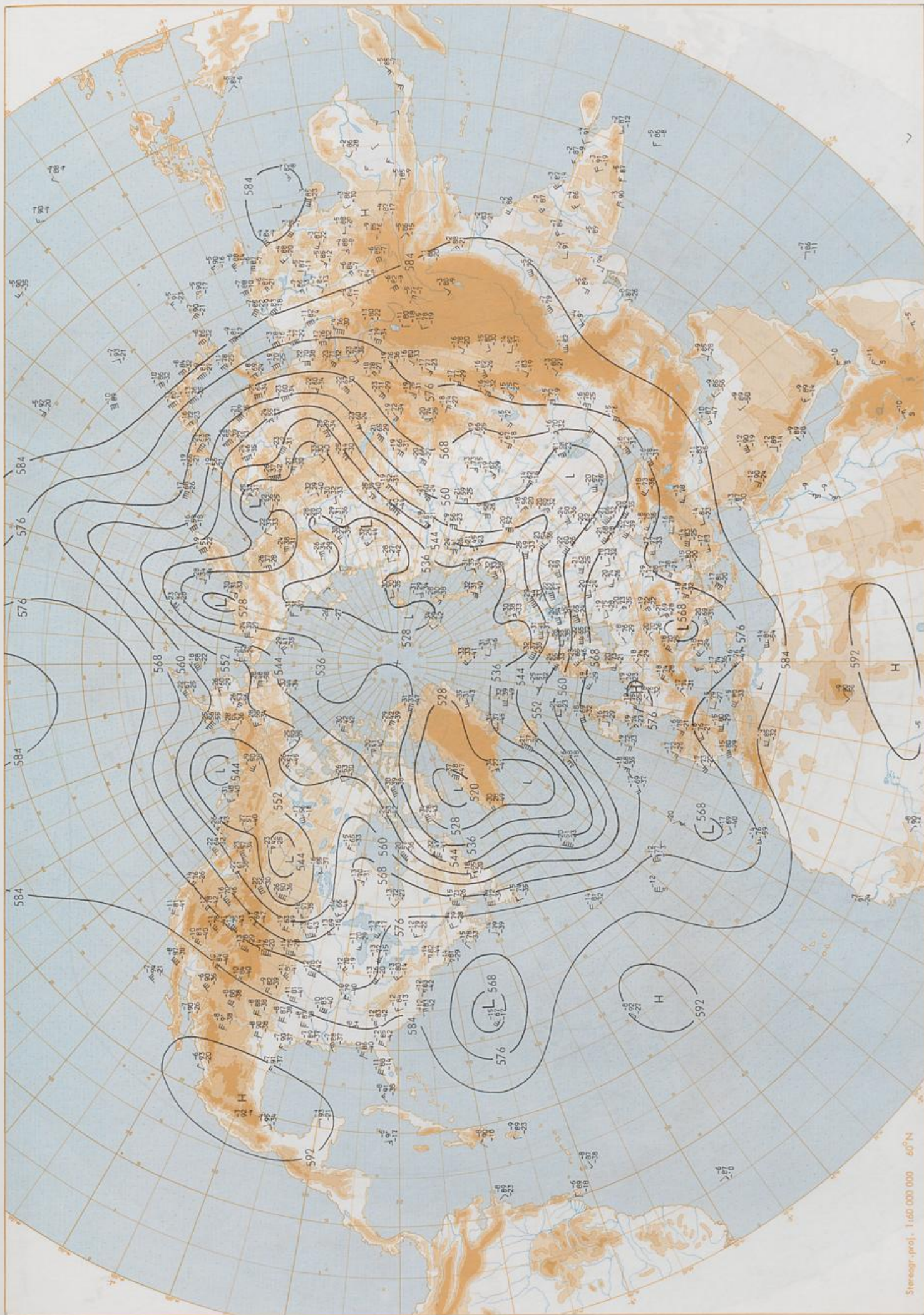
Stereogr. proj. 1:30 000 000 60°N

Surface chart 12 UTC

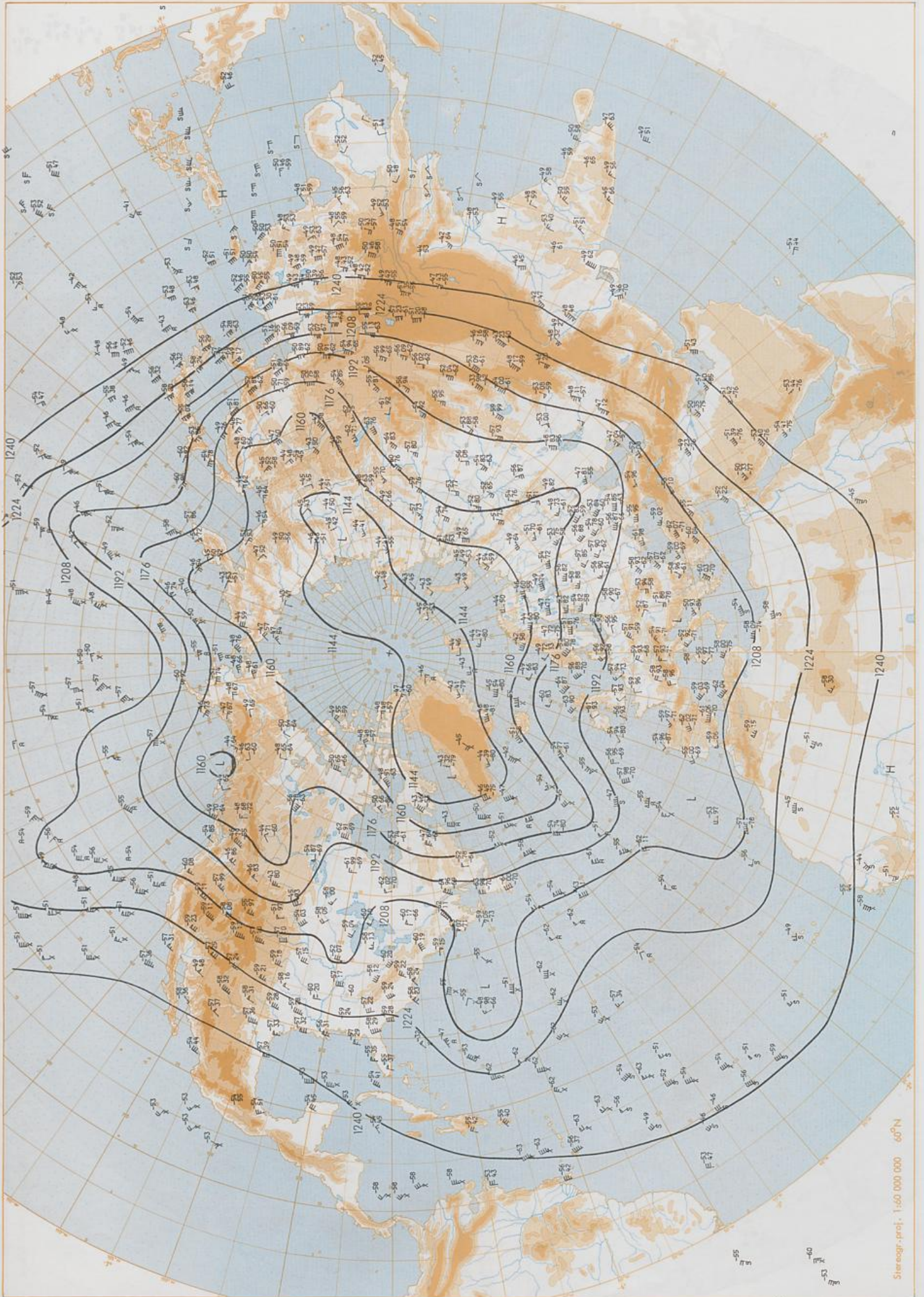


Surface chart 00 UTC

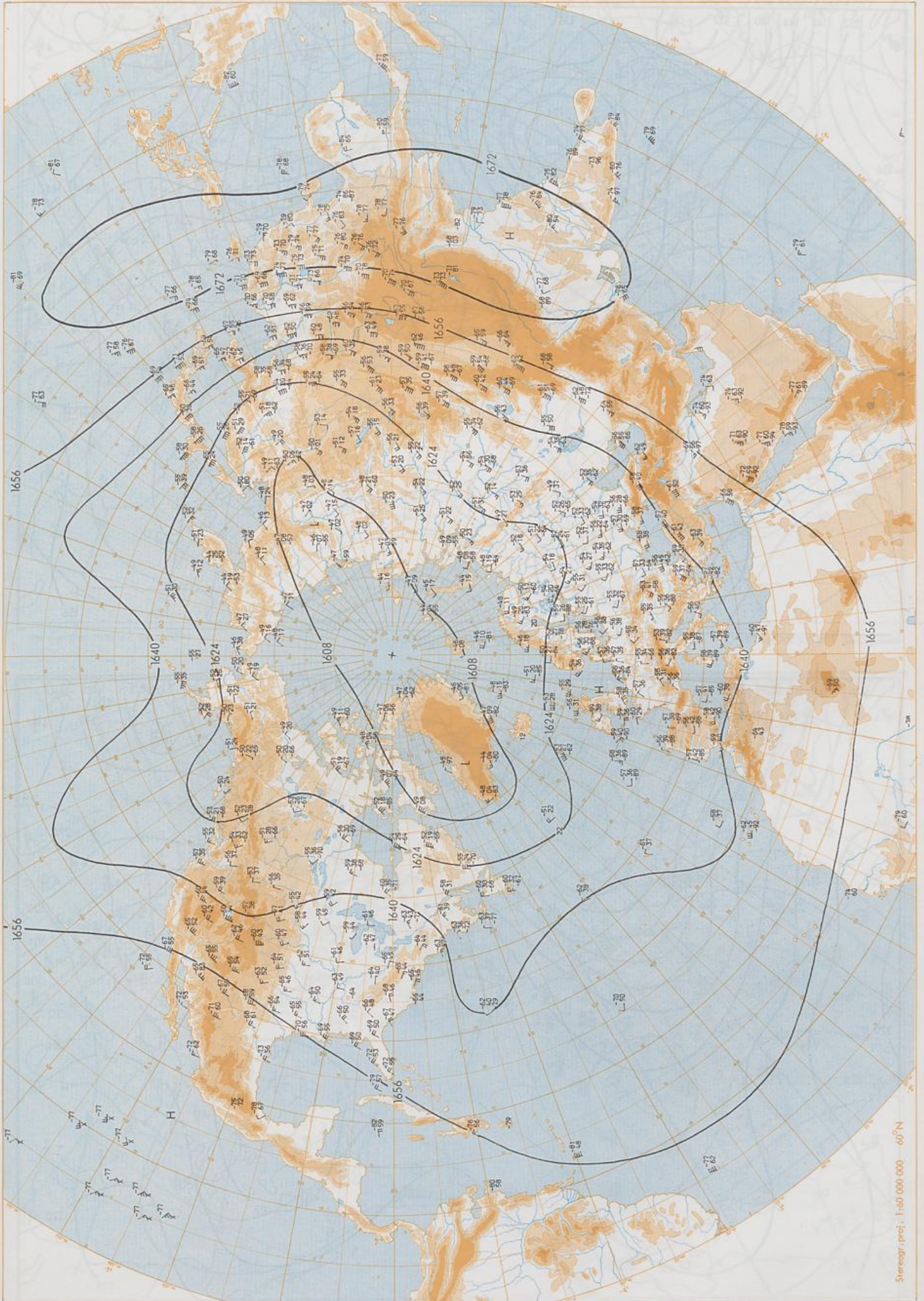
Stereogr. proj. 1:60 000 000 60°N



500 hPa 00 UTC



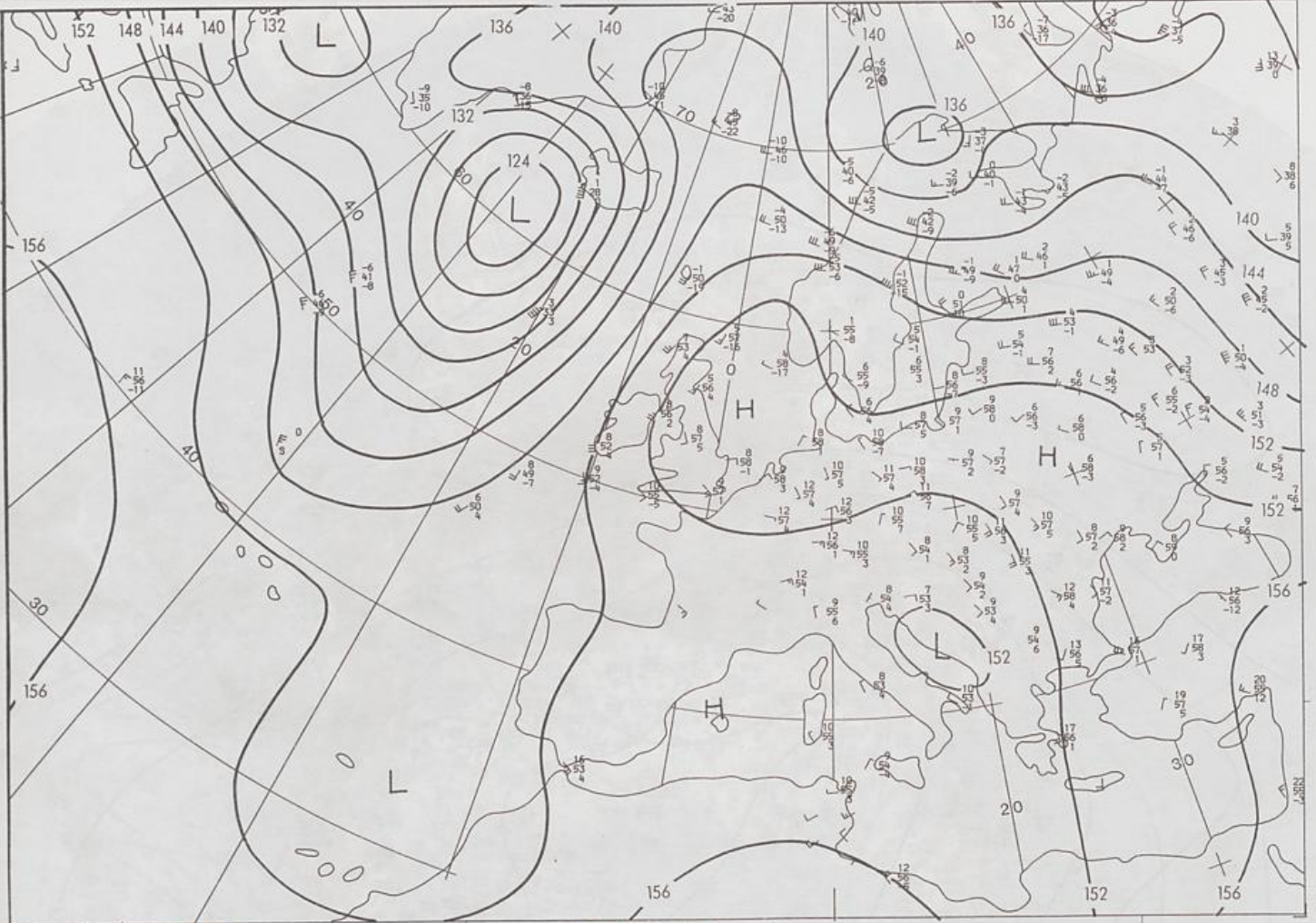
200 hPa 00 UTC



100 hPa 00 UTC

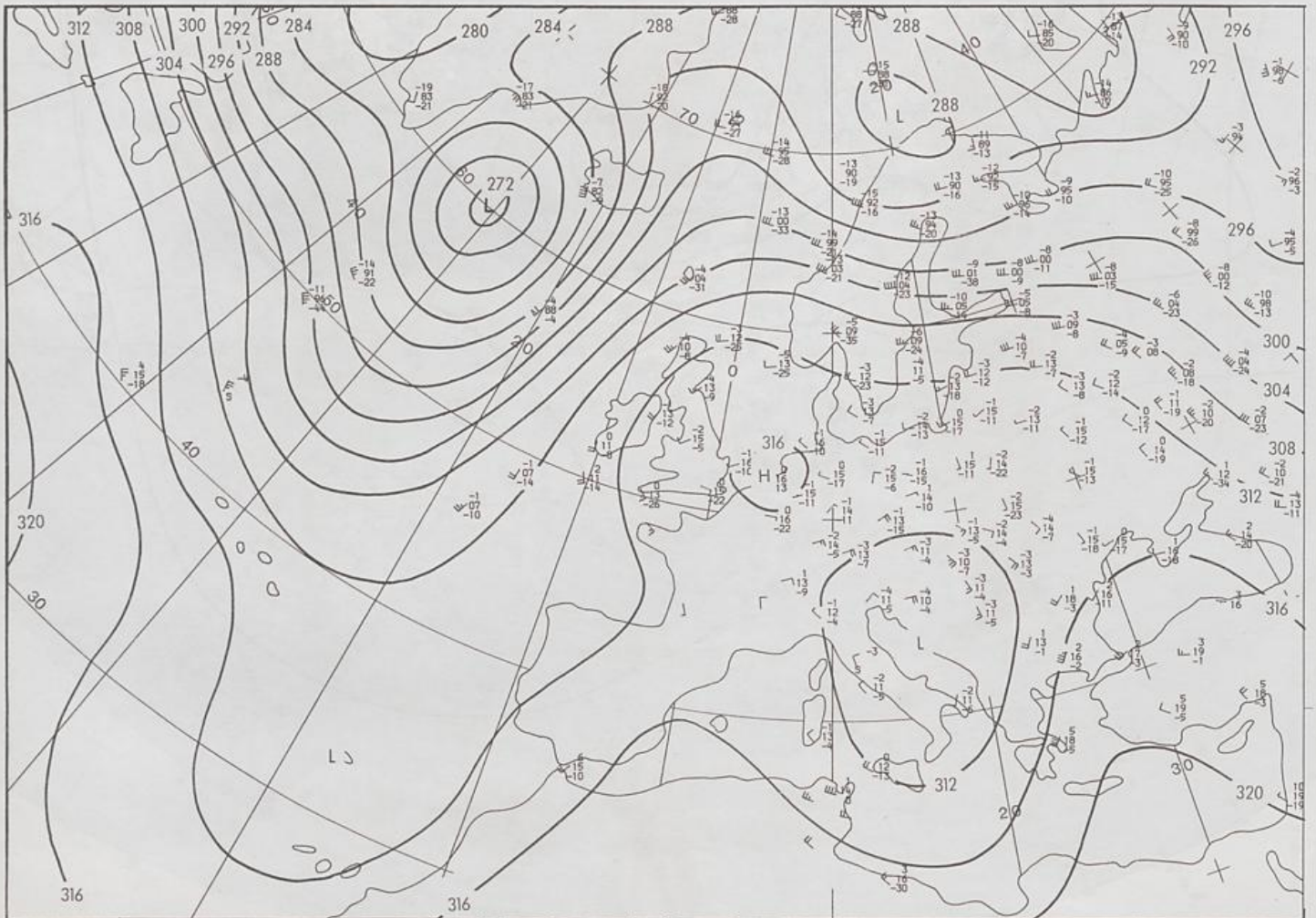
Stereogr. proj. 1:40 000 000 60°N

20. 05. 1989

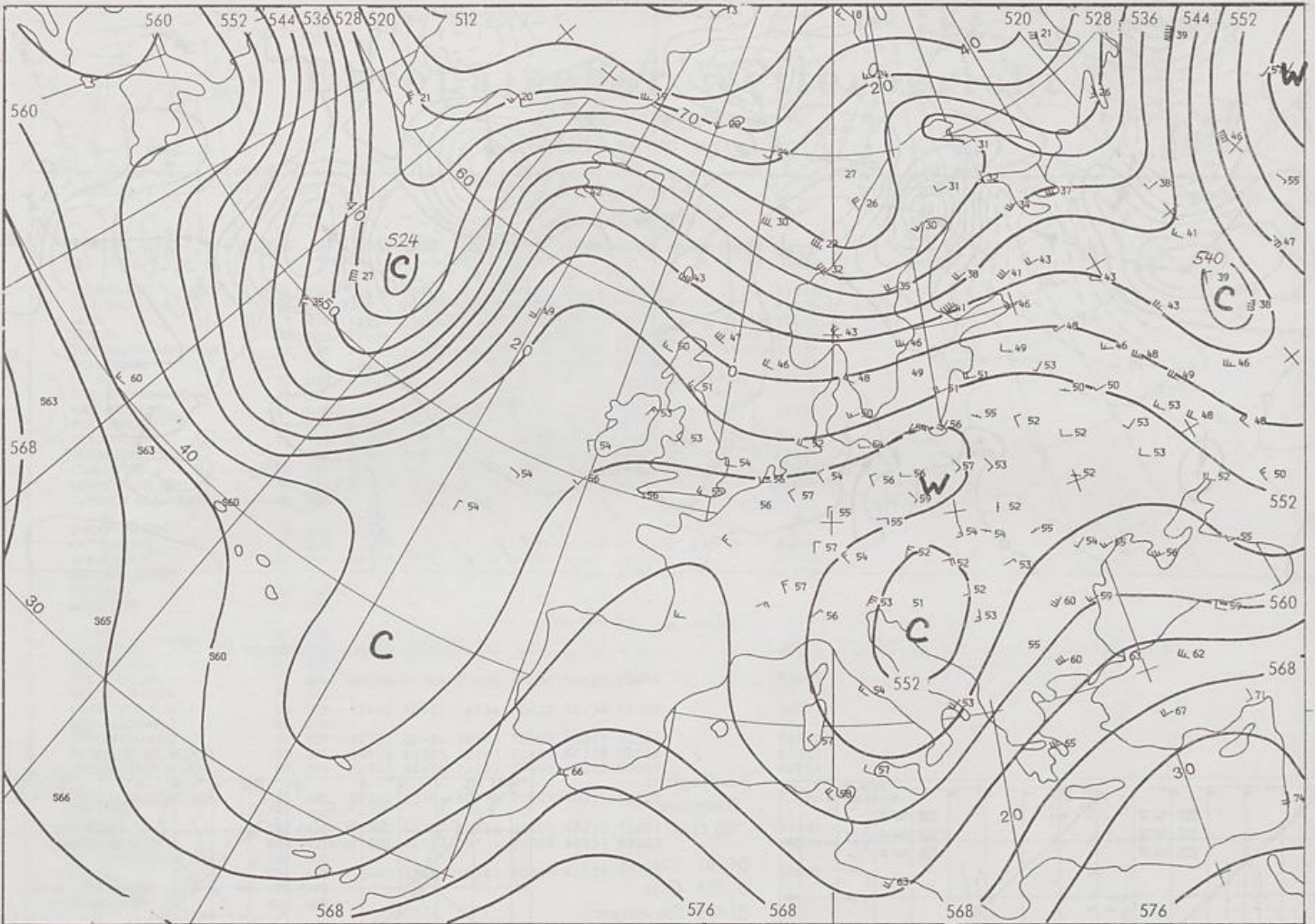


Stereogr. proj. 1:30 000 000 in 60°N

850 hPa 00 UTC

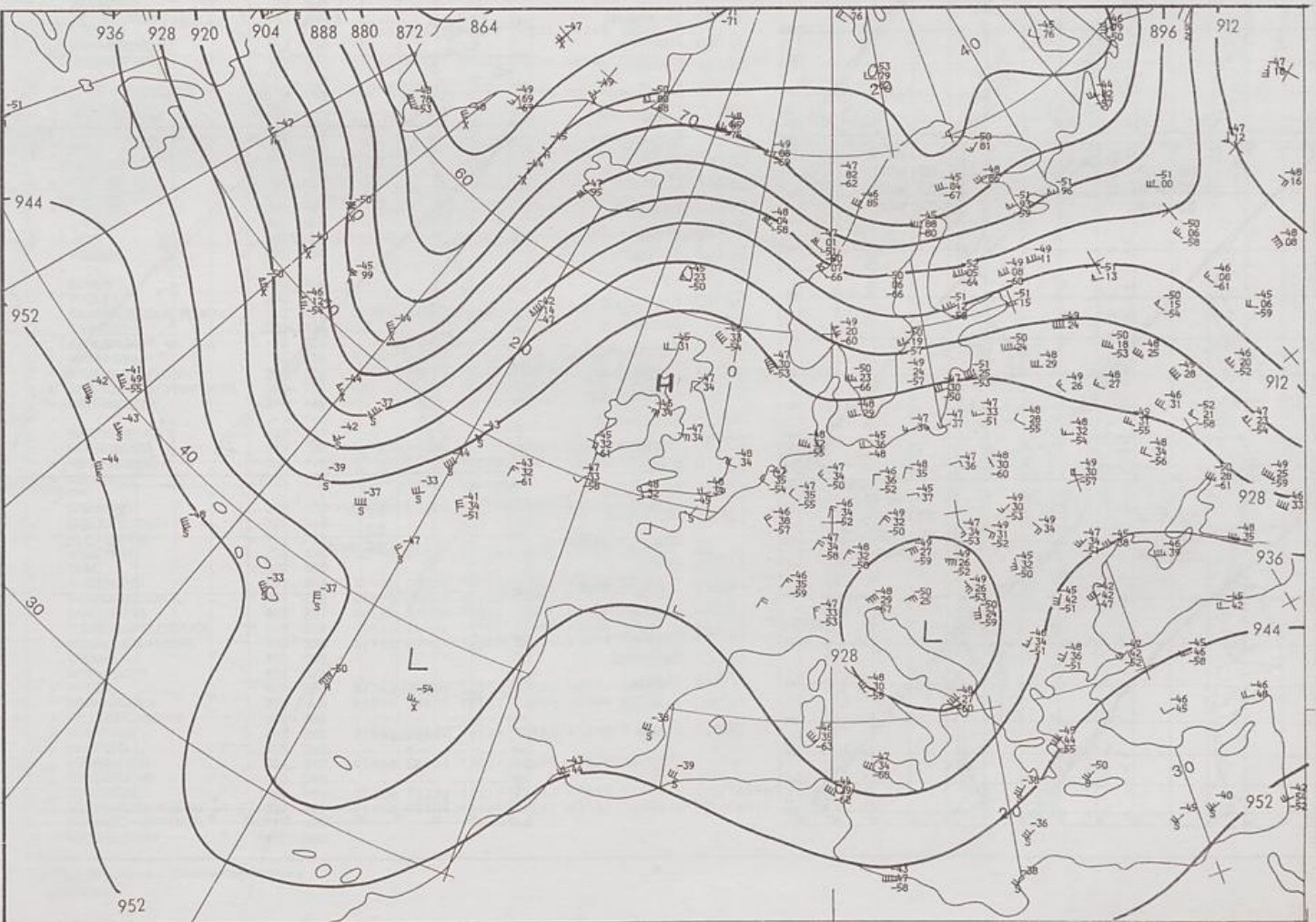


700 hPa 00 UTC



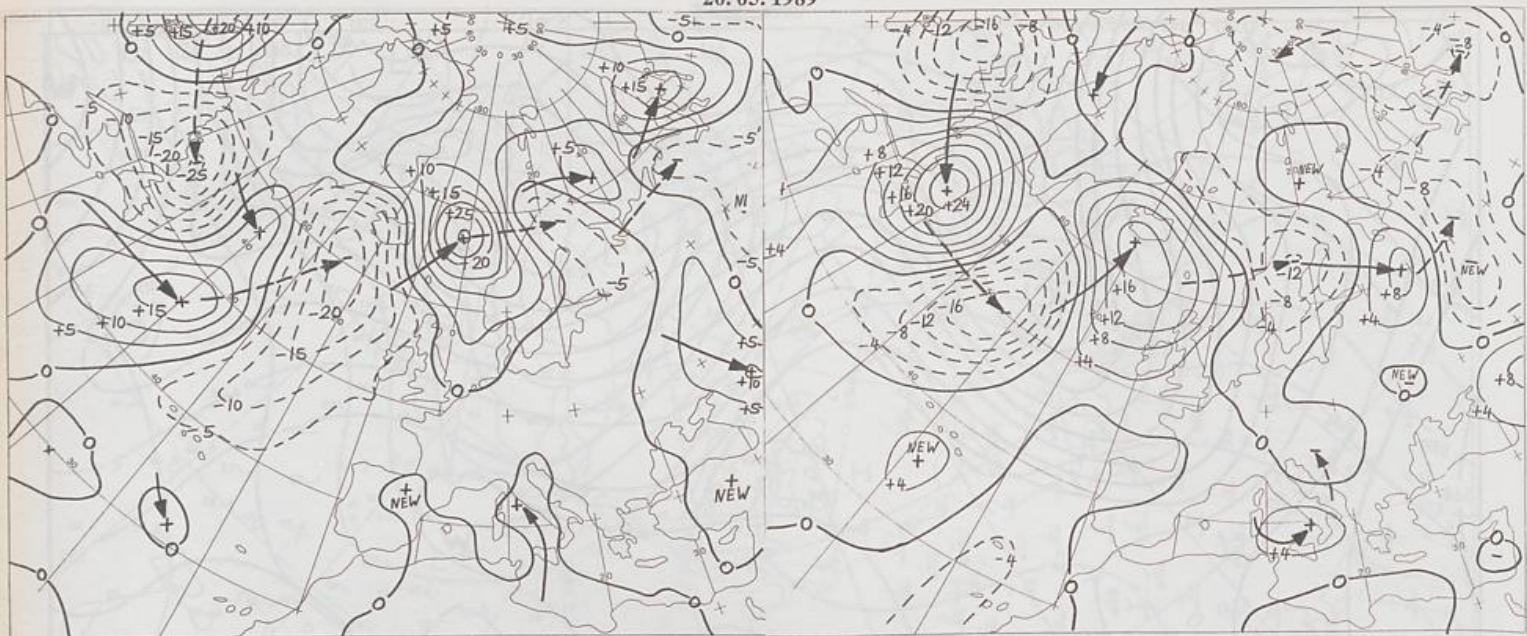
Stereogr.proj. 1:30 000 000 in 60°N

500/1000 hPa 00 UTC



300 hPa 00 UTC

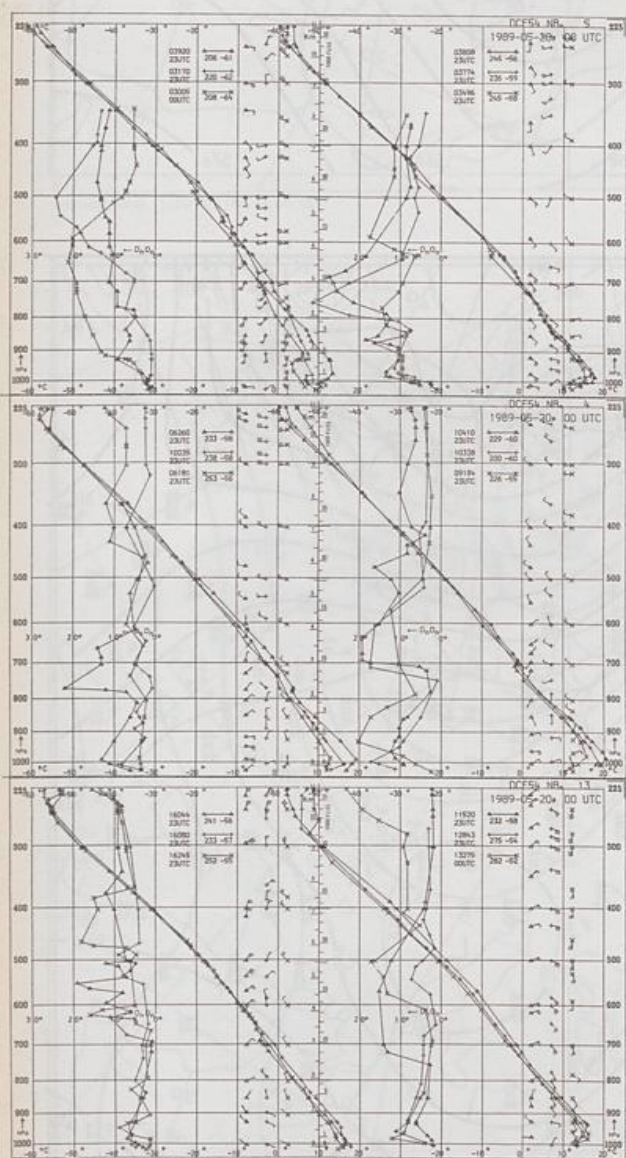
20.05.1989



24 hr surface pressure change 00 UTC

Stereogr. proj. 1:60 000 000

24 hr thickness change 00 UTC



Aerological Diagrams 00 GMT

- 01241 Orland
- 01384 Oslo
- 01415 Stavanger
- 02465 Stockholm
- 02527 Goteborg
- 03005 Lerwick
- 03170 Shanwell
- 03496 Hemsby
- 03774 Crawley
- 03808 Camborne
- 03920 Long Kesh
- 06181 Kobenhavn
- 06260 De Bilt
- 06447 Uccle
- 06610 Payeme
- 07110 Brest
- 07145 Troppes
- 07481 Lyon
- 07510 Bordeaux
- 07645 Nimes
- 09184 Greifswald
- 09393 Lindenberg
- 09548 Meiningen
- 10035 Schleswig
- 10338 Hannover
- 10410 Essen
- 10739 Stuttgart
- 10868 München-Oberschleißheim
- 11035 Wien
- 11520 Praha-Libus
- 12374 Legionowo
- 12843 Budapest
- 13275 Beograd
- 16044 Udine
- 16080 Milano
- 16242 Roma

