

Europäischer Wetterbericht European Meteorological Bulletin Bulletin Météorologique Européen Boletín Meteorológico Europeo

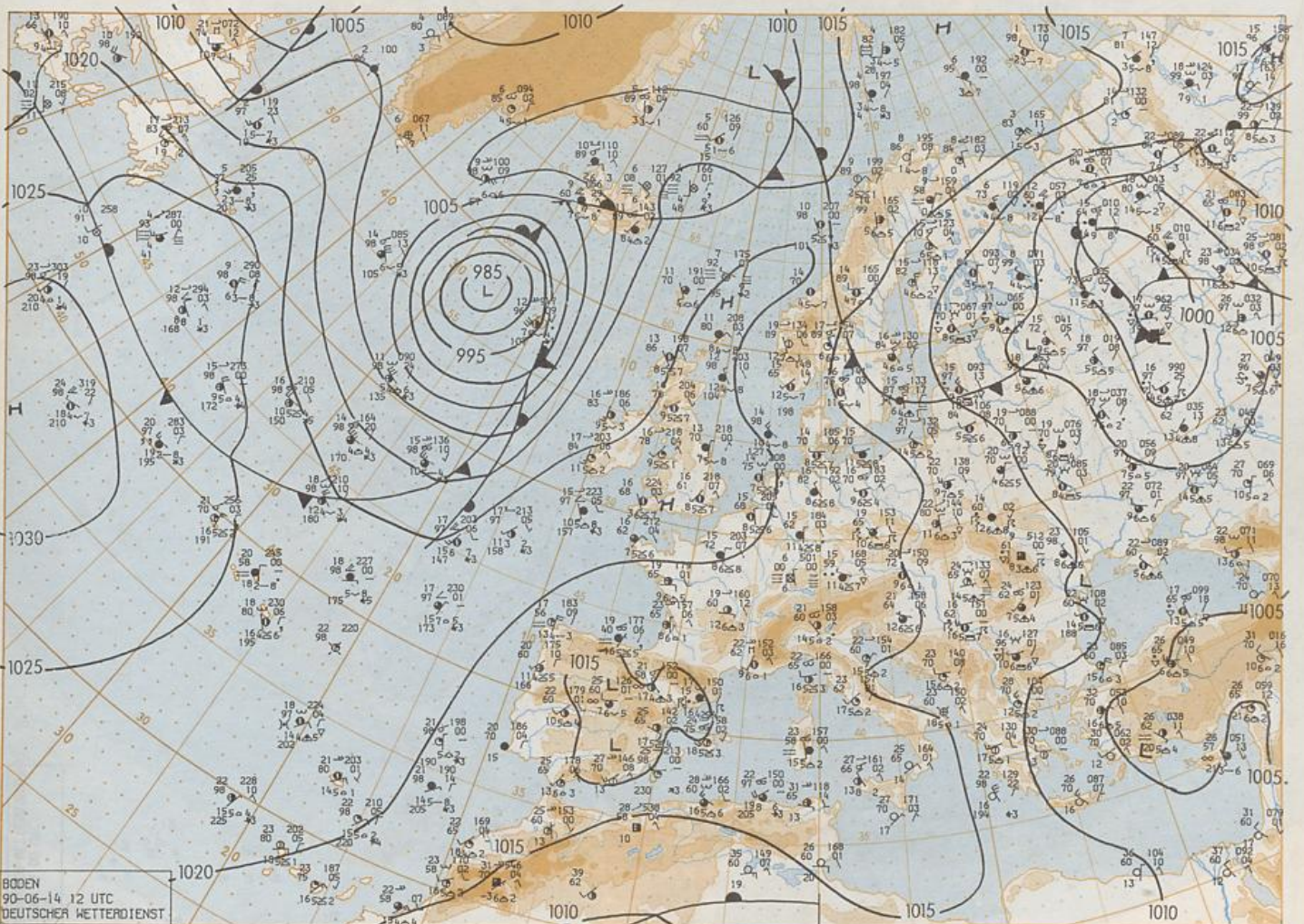
Amtsblatt des Deutschen Wetterdienstes

Druck und Verlag: Deutscher Wetterdienst - Zentralamt - Frankfurter Straße 135, Postfach 10 04 65, 6050 Offenbach a.M., Tel.: (069) 8 06 20

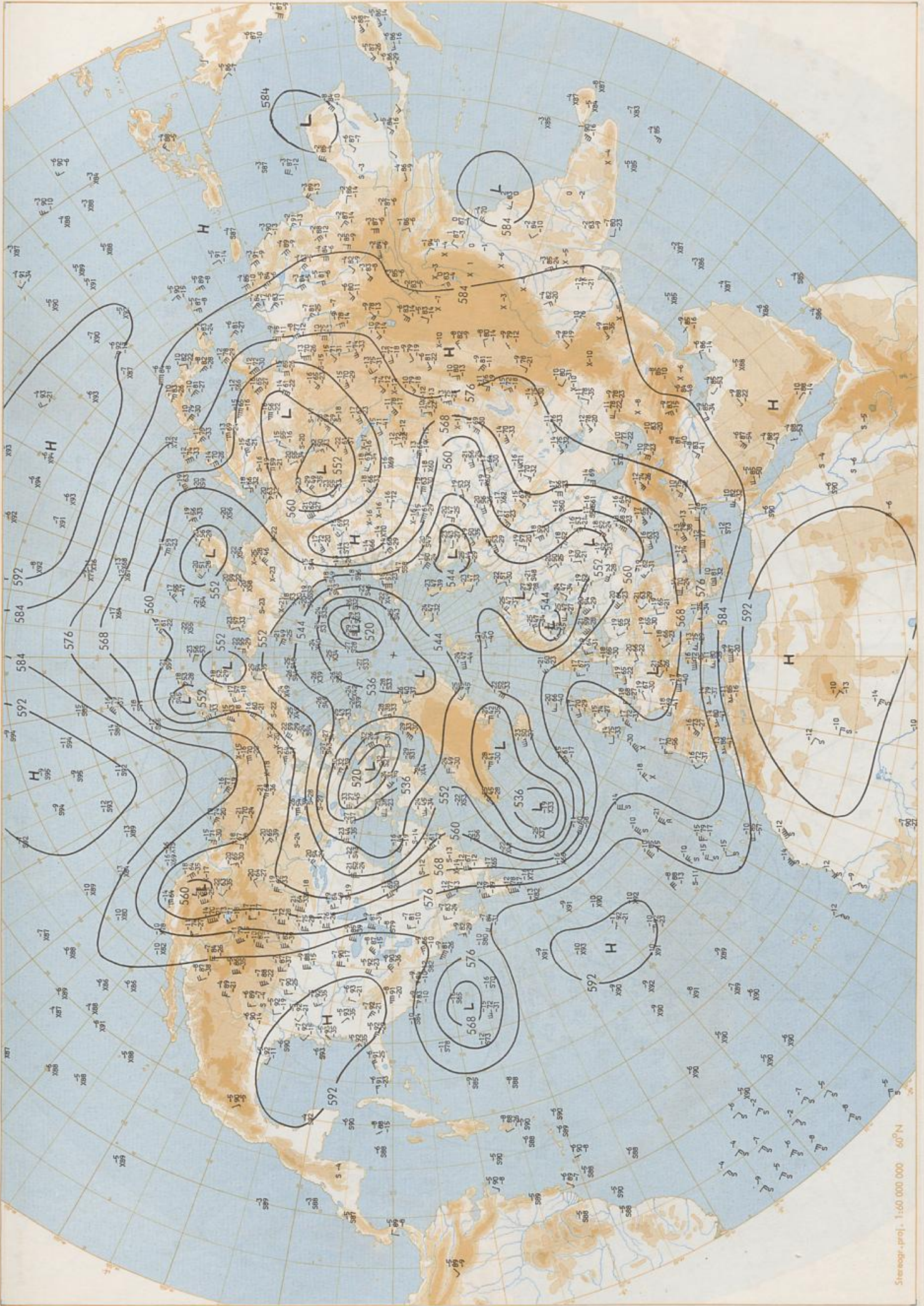
| | | | |
|---|---|--|--|
| Erscheint täglich Bezugspreis monatlich 30.00 DM zuzügl. Porto Nachdruck nicht gestattet | Issued daily Monthly price 30.00 DM plus postage All rights reserved | Publié quotidiennement Prix mensuel 30.00 DM plus port Reproduction interdite | Se publica diariamente Precio de suscripción mensual 30.00 DM plus porte Se prohíbe la reproducción |
|---|---|--|--|

| | | | | | |
|---|----|---|------------|--------------------------------------|-----|
| Jahrgang Volume Volume Volumen | 15 | Donnerstag Thursday Jeudi Jueves | 14.06.1990 | Nummer Number Número Número | 165 |
|---|----|---|------------|--------------------------------------|-----|

| Inhalt | Content | Contenu | Contenido |
|--|--|--|---|
| Bodenwetterkarte 12 UTC | Surface chart 12 UTC | Carte de surface à 12 UTC | Análisis en superficie a las 12 UTC |
| Bodenwetterkarte Nordhemisphäre 00 UTC | Surface chart northern hemisphere 00 UTC | Carte de surface sur l'hémisphère nord à 00 UTC | Análisis en superficie hemisferio norte a las 00 UTC |
| 500-hPa-Fläche Nordhemisphäre 00 UTC | 500 hPa surface northern hemisphere 00 UTC | Surface 500 hPa sur l'hémisphère nord à 00 UTC | Topografía de la superficie de 500 hPa hemisferio norte de las 00 UTC |
| 200-hPa-Fläche Nordhemisphäre 00 UTC | 200 hPa surface northern hemisphere 00 UTC | Surface 200 hPa sur l'hémisphère nord à 00 UTC | Topografía de la superficie de 200 hPa hemisferio norte de las 00 UTC |
| 100-hPa-Fläche Nordhemisphäre 00 UTC | 100 hPa surface northern hemisphere 00 UTC | Surface 100 hPa sur l'hémisphère nord à 00 UTC | Topografía de la superficie de 100 hPa hemisferio norte de las 00 UTC |
| 850-hPa 00 UTC, 700 hPa 00 UTC | 850 hPa 00 UTC, 700 hPa 00 UTC | 850 hPa 00 UTC, 700 hPa 00 UTC | 850 hPa 00 UTC, 700 hPa 00 UTC |
| Relative Topographie 500/1000 hPa 00 UTC | Thickness chart 500/1000 hPa 00 UTC | Carte d'épaisseur 500/1000 hPa 00 UTC | Relative 500/1000 hPa 00 UTC |
| 300-hPa 00 UTC | 300 hPa 00 UTC | 300 hPa 00 UTC | 300 hPa 00 UTC |
| 24stg. Bodenänderung 00 UTC | 24 hr surface pressure change 00 UTC | Variations de pression en 24 h (niveau mer) en hPa à 00 UTC | Variación de la presión del suelo 24 h en hPa a las 00 UTC |
| 24stg. Änderung relative Topographie | 24 hr thickness change | Variations d'épaisseur 500/1000 hPa en 24 h 00 UTC | Variación de espesor 500/1000 hPa en 24 h 00 UTC |
| 500/1000 hPa 00 UTC | 500/1000 hPa 00 UTC | | |
| Aerologische Diagramme 00 UTC | Aerological diagrams 00 UTC | Diagrammes aérologiques 00 UTC | Diagramas aerológicos 00 UTC |

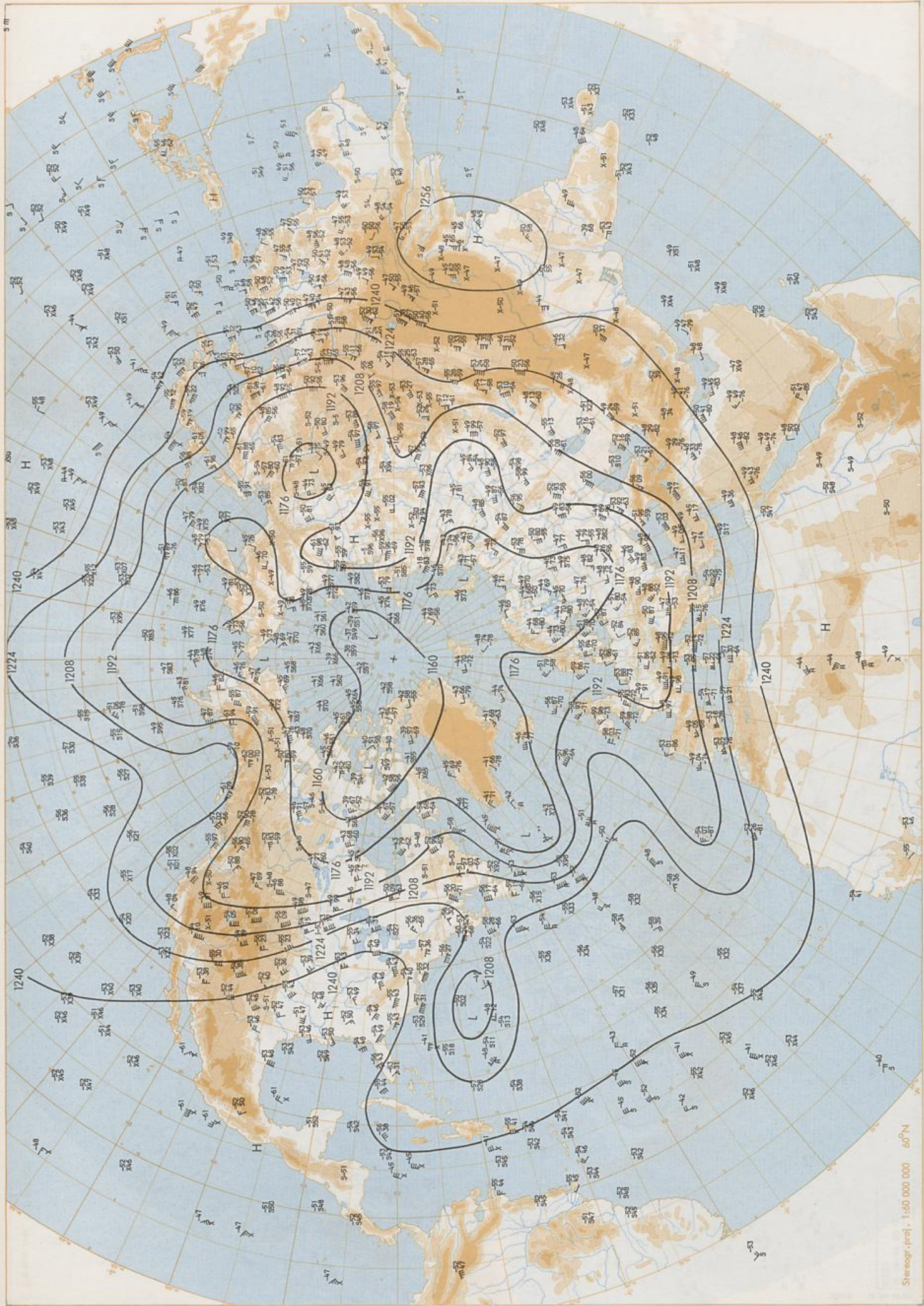


BODEN
90-06-14 12 UTC
DEUTSCHER WETTERDIENST



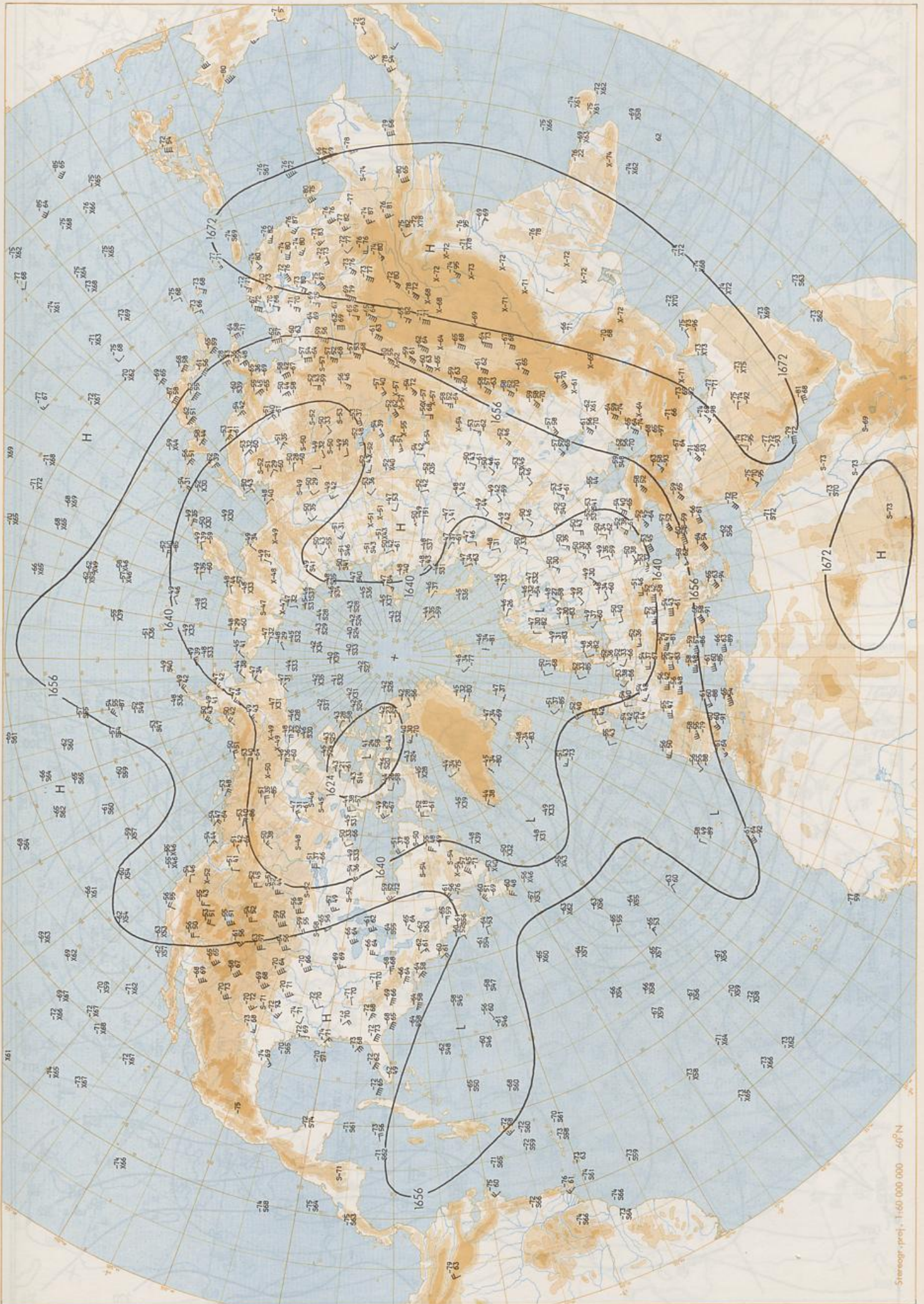
500 hPa 00 UTC

Stereogr. proj. 1:60 000 000 60°N



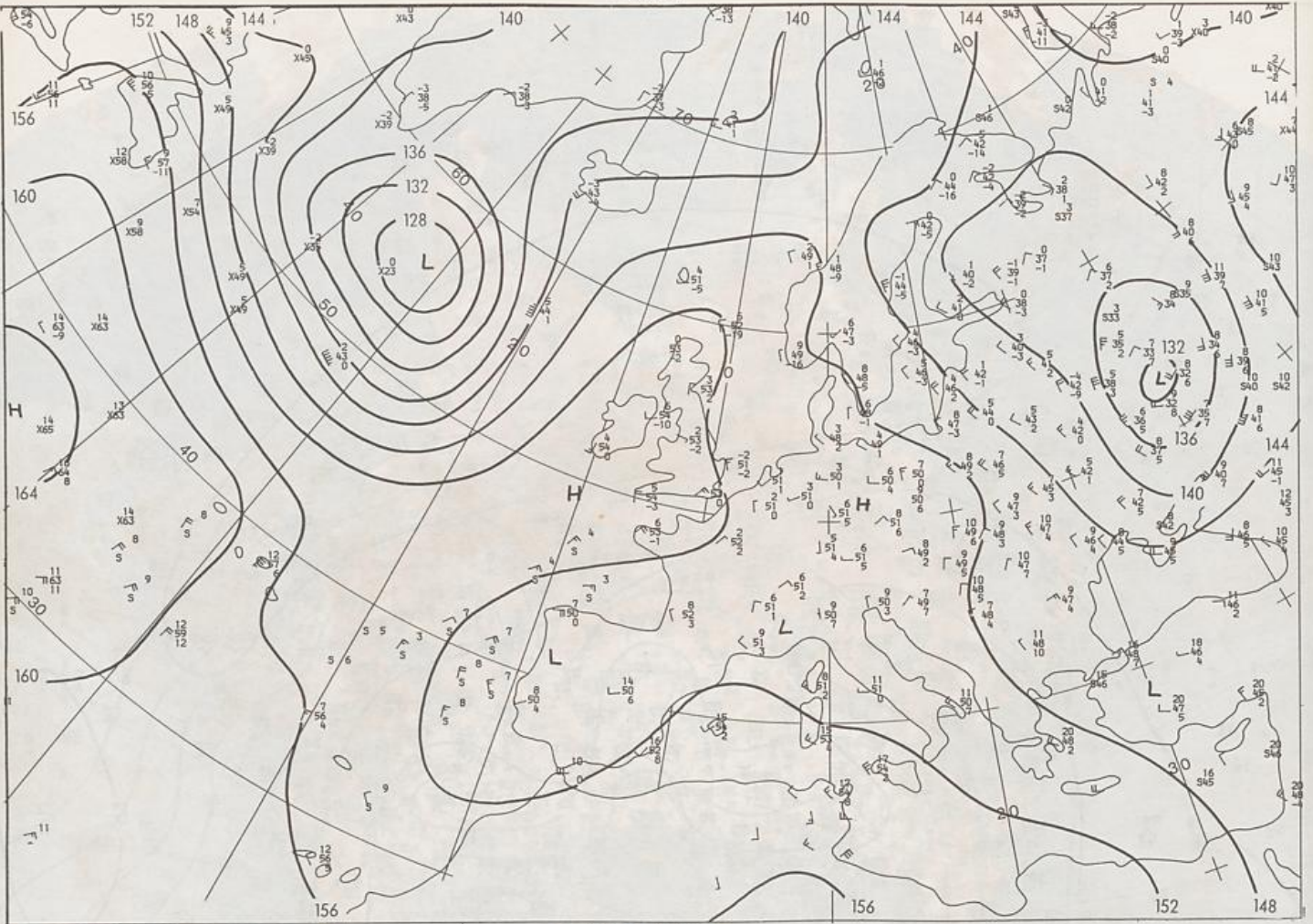
200 hPa 00 UTC

Stereogr. proj. 1:50 000 000 60°N



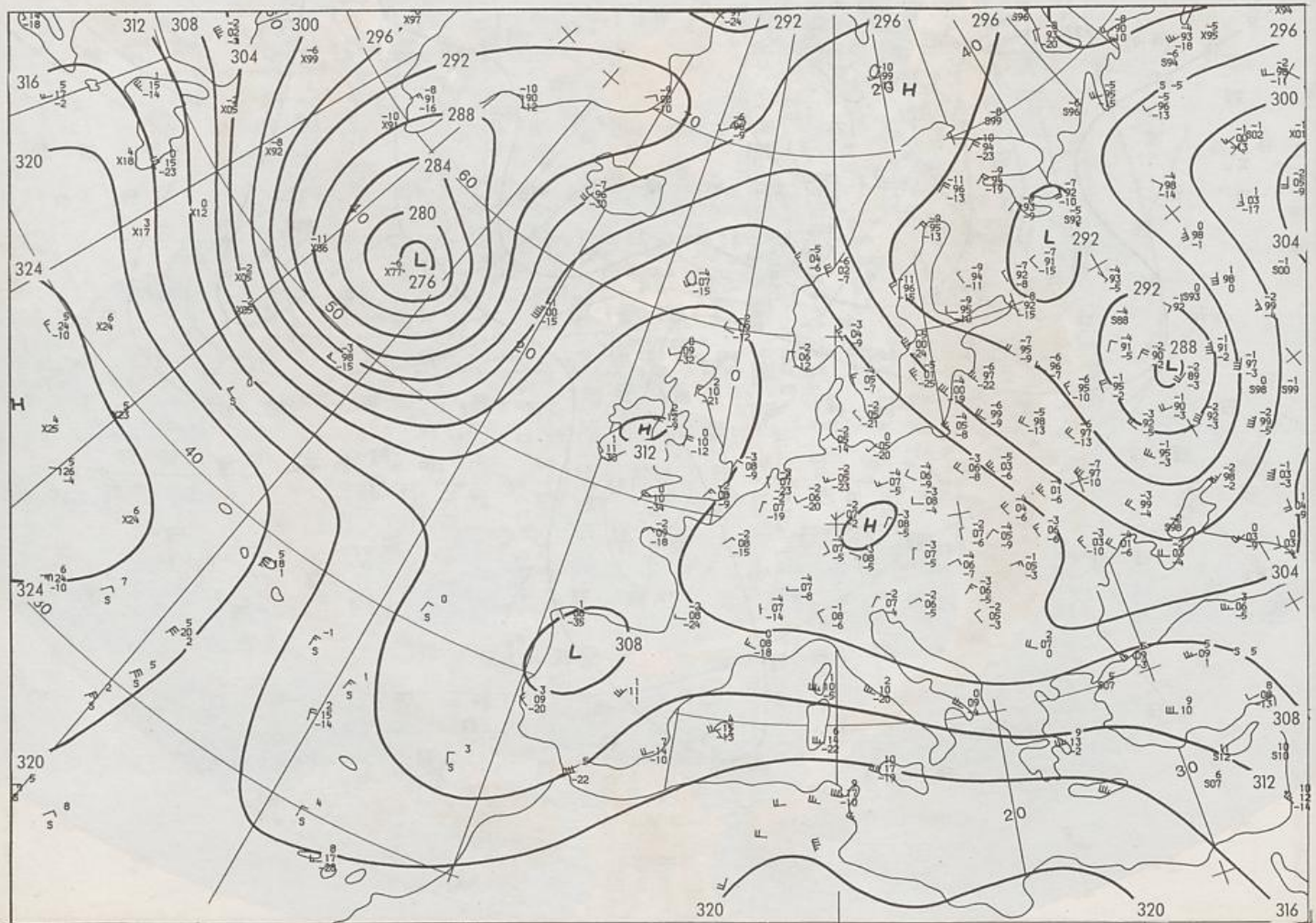
100 hPa 00 UTC

Stereogr. proj. 1:60 000 000 60°N

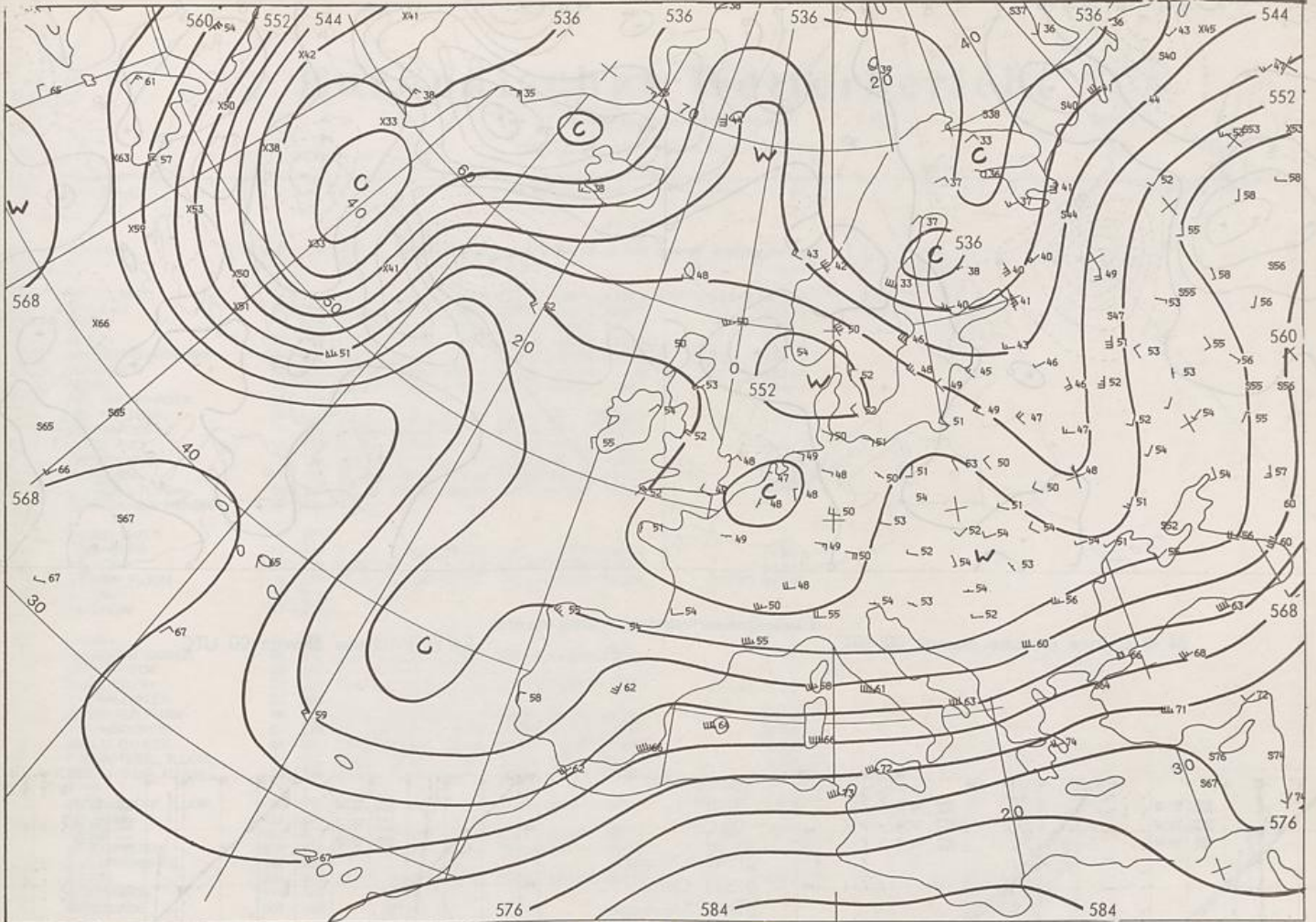


Stereographische Projektion 1 : 30 000 000 60°N

850 hPa 00 UTC

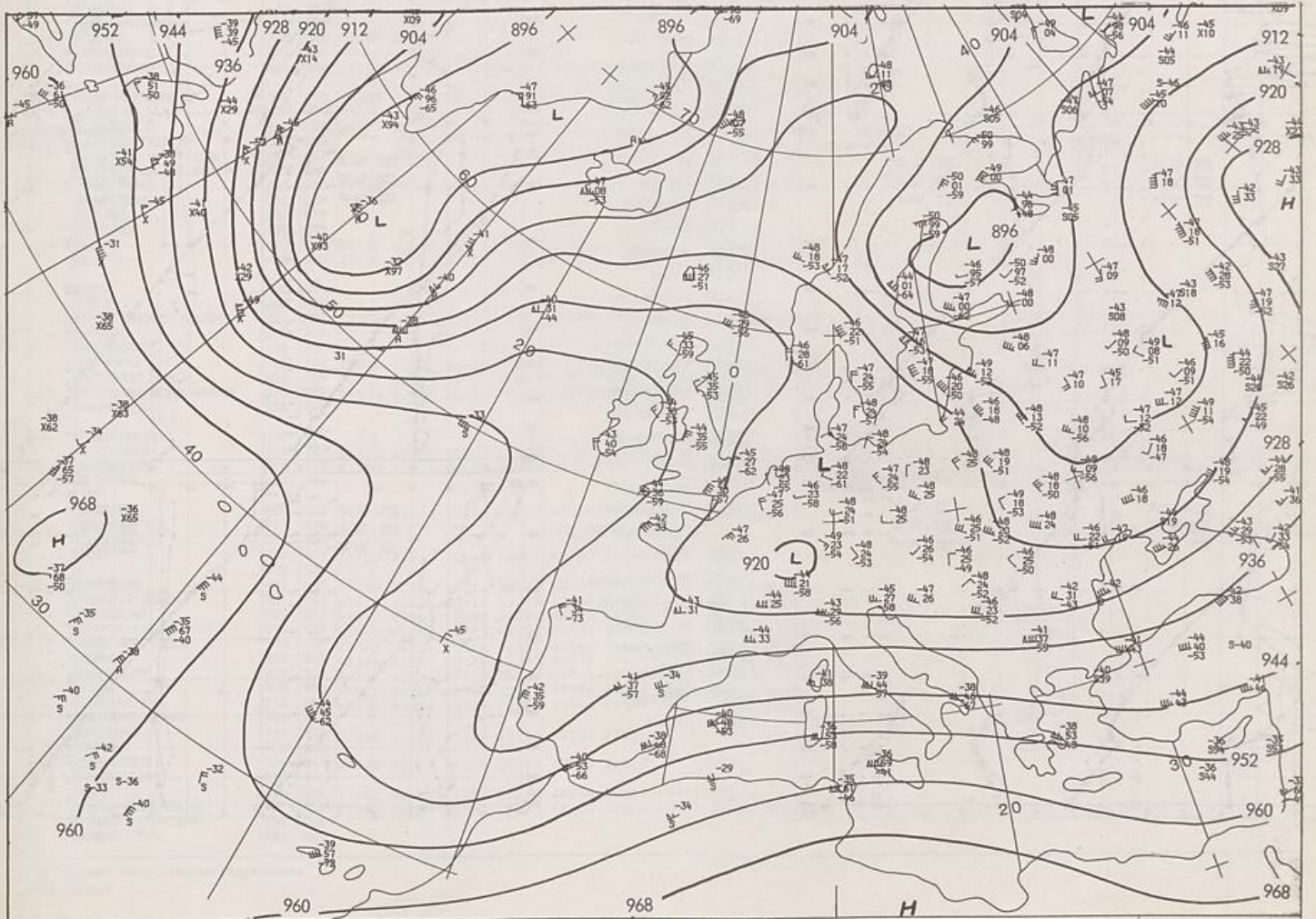


700 hPa 00 UTC



Stereographische Projektion 1:30 000 000 60°N

500/1000 hPa 00 UTC



300 hPa 00 UTC

