

Europäischer Wetterbericht European Meteorological Bulletin Bulletin Météorologique Européen Boletín Meteorológico Europeo

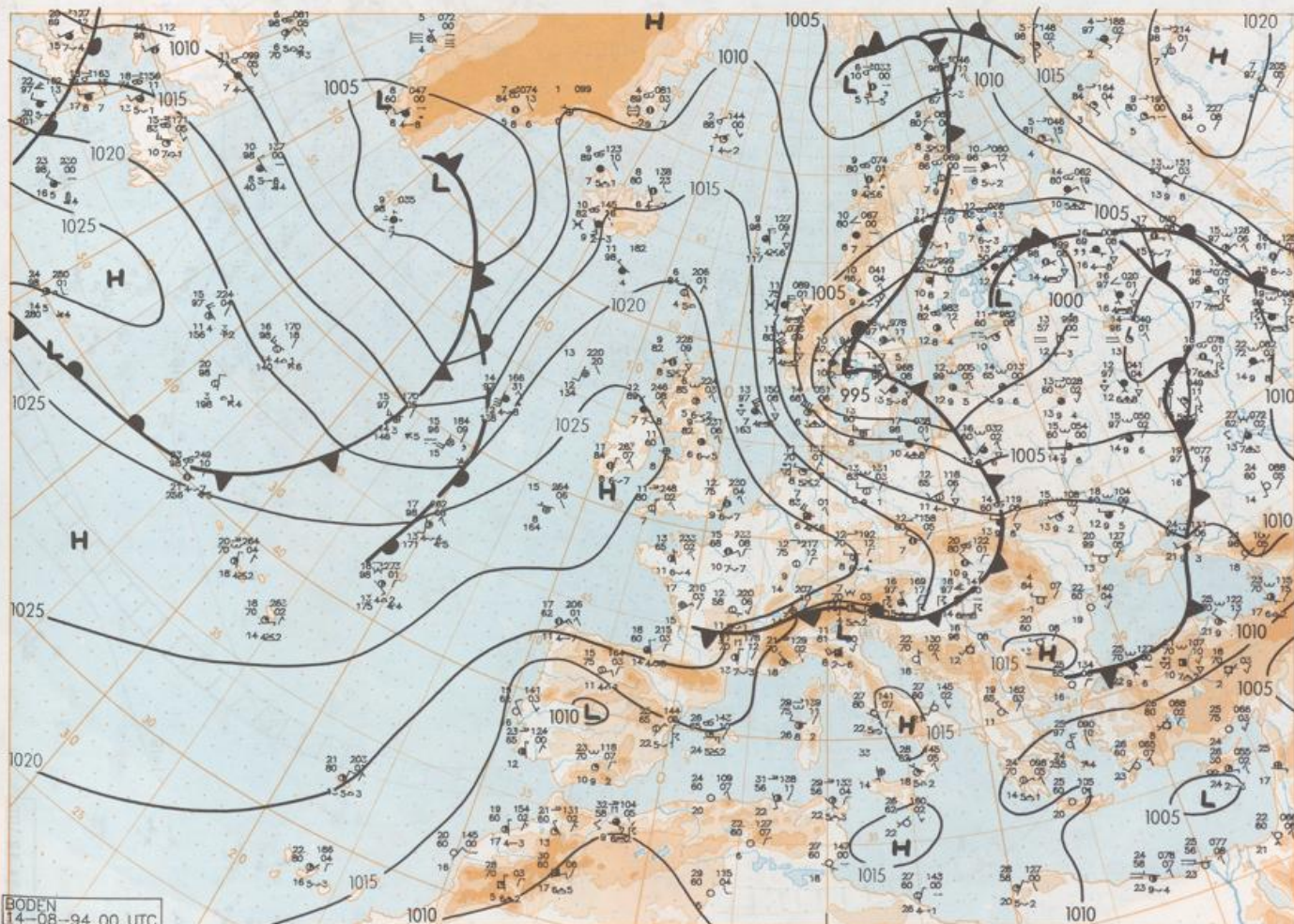
Amtsblatt des Deutschen Wetterdienstes

Druck und Verlag: Deutscher Wetterdienst - Zentralamt - Frankfurter Str. 135, 63067 Offenbach a.M., Postfach 100465, 63004 Offenbach a.M. Tel.: (069) 8062-2284

Erscheint täglich Bezugspreis jährlich DM 420,- zuzügl. Porto Nachdruck nicht gestattet	issued daily Yearly price DM 420,- plus postage All rights reserved	Publié quotidiennement Prix annuel DM 420,- plus port. Reproduction interdite	Se publica diariamente Precio de suscripción anual DM 420,- plus porte Se prohíbe la reproducción
--	--	--	--

Jahrgang Volume Volume Volumen	19	Sonntag Sunday Dimanche Domingo	14.08.1994	Nummer Number Número Número	226
---	----	--	------------	--------------------------------------	-----

Inhalt	Content	Contenu	Contenido
Bodenwetterkarte 00 UTC	Surface chart 00 UTC	Carte de surface à 00 UTC	Análisis en superficie a las 00 UTC
Bodenwetterkarte Nordhemisphäre 12 UTC	Surface chart northern hemisphere 12 UTC	Carte de surface sur l'hémisphère nord à 12 UTC	Análisis en superficie hemisferio norte a las 12 UTC
500 - hPa-Fläche Nordhemisphäre 12 UTC	500 hPa surface northern hemisphere 12 UTC	Surface 500 hPa sur l'hémisphère nord à 12 UTC	Topografía de la superficie de 500 hPa hemisferio norte de las 12 UTC
200 - hPa-Fläche Nordhemisphäre 12 UTC	200 hPa surface northern hemisphere 12 UTC	Surface 200 hPa sur l'hémisphère nord à 12 UTC	Topografía de la superficie de 200 hPa hemisferio norte de las 12 UTC
100 - hPa-Fläche Nordhemisphäre 12 UTC	100 hPa surface northern hemisphere 12 UTC	Surface 100 hPa sur l'hémisphère nord à 12 UTC	Topografía de la superficie de 100 hPa hemisferio norte de las 12 UTC
850 - hPa 12 UTC, 700 hPa 12 UTC	850 hPa 12 UTC, 700 hPa 12 UTC	850 hPa 12 UTC, 700 hPa 12 UTC	850 hPa 12 UTC, 700 hPa 12 UTC
Relative Topographie 500/1000 hPa 12 UTC	Thickness chart 500/1000 hPa 12 UTC	Carte d'épaisseur 500/1000 hPa 12 UTC	Relative 500/1000 hPa 12 UTC
300 - hPa 12 UTC	300 hPa 12 UTC	300 hPa 12 UTC	300 hPa 12 UTC
Aerologische Diagramme 12 UTC	Aerological diagrams 12 UTC	Diagrammes aérologiques 12 UTC	Diagramas aerológicos 12 UTC

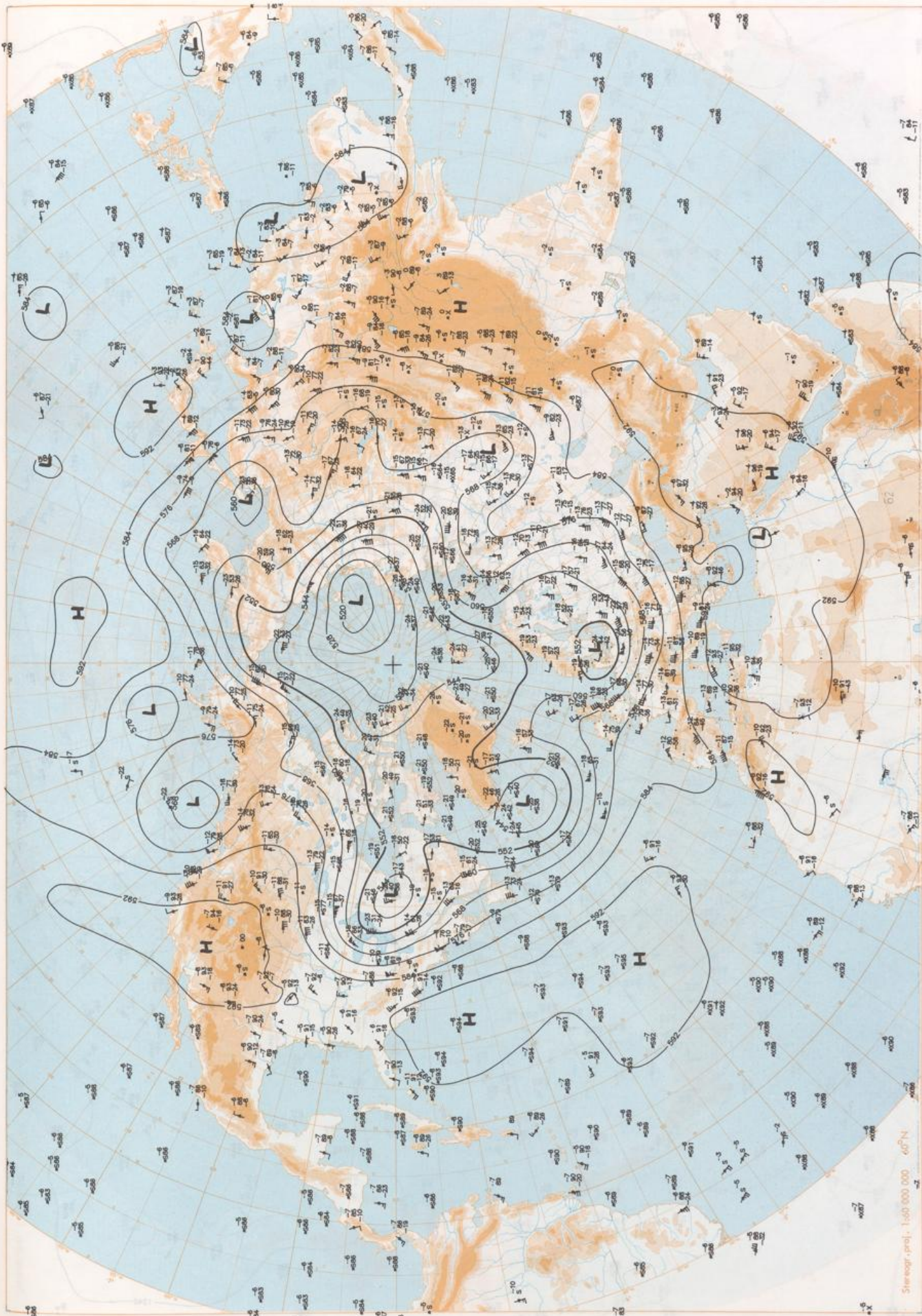


Stereogr. proj. 1:30 000 000 50°N

Surface chart 00 UTC

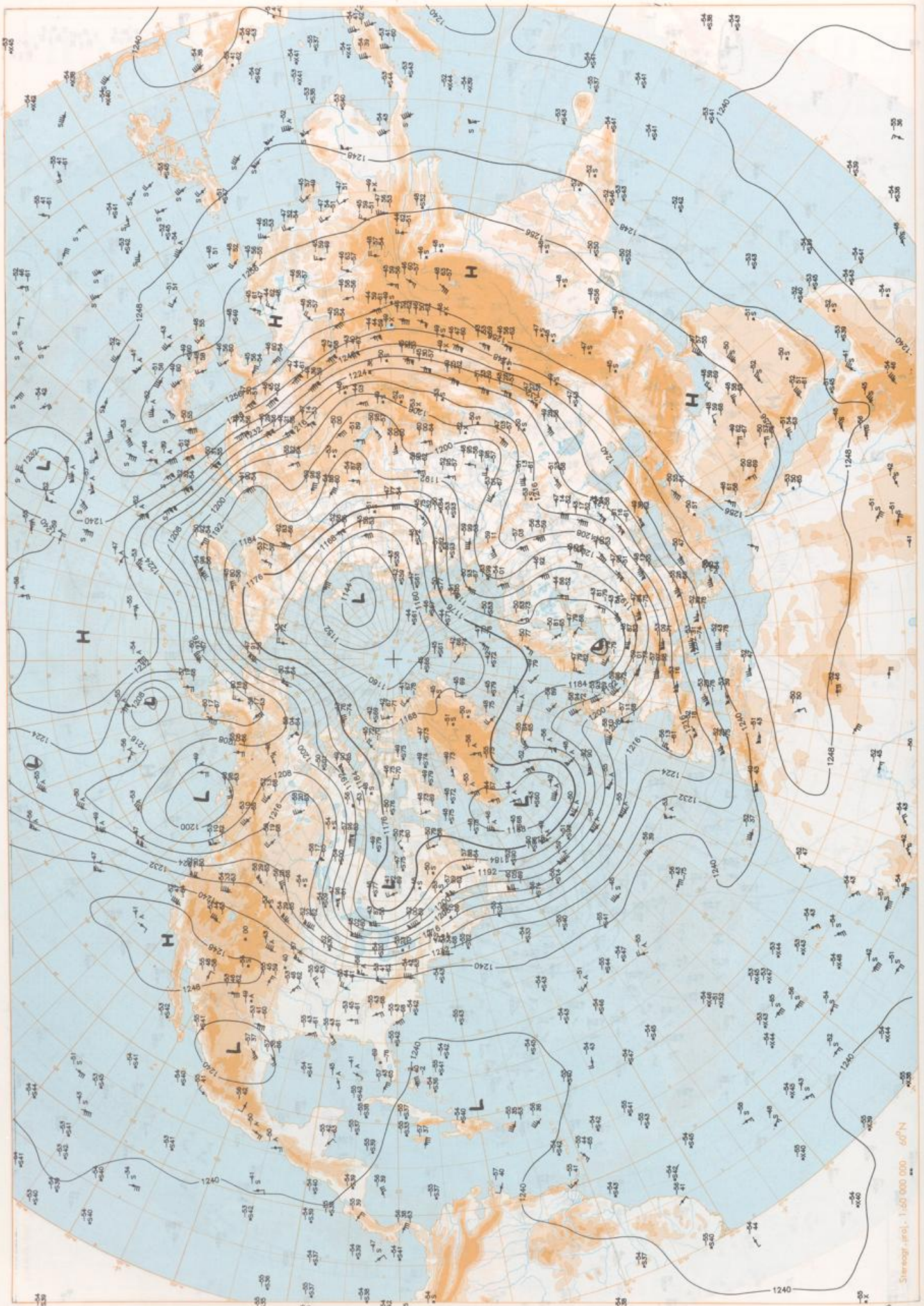


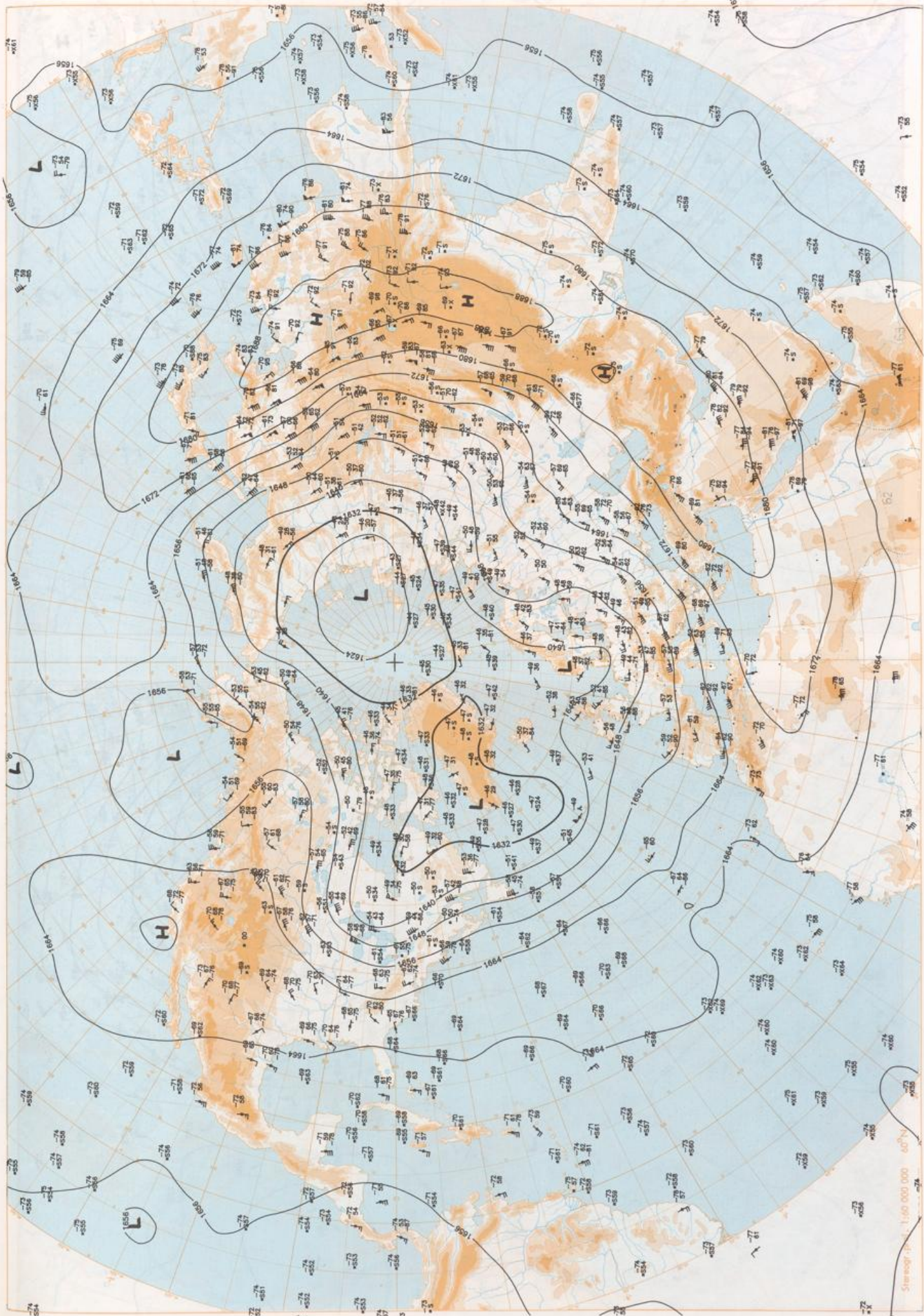
JOHN
1-08-94 12 UTC
000 000 60°N



500 hPa 12 UTC

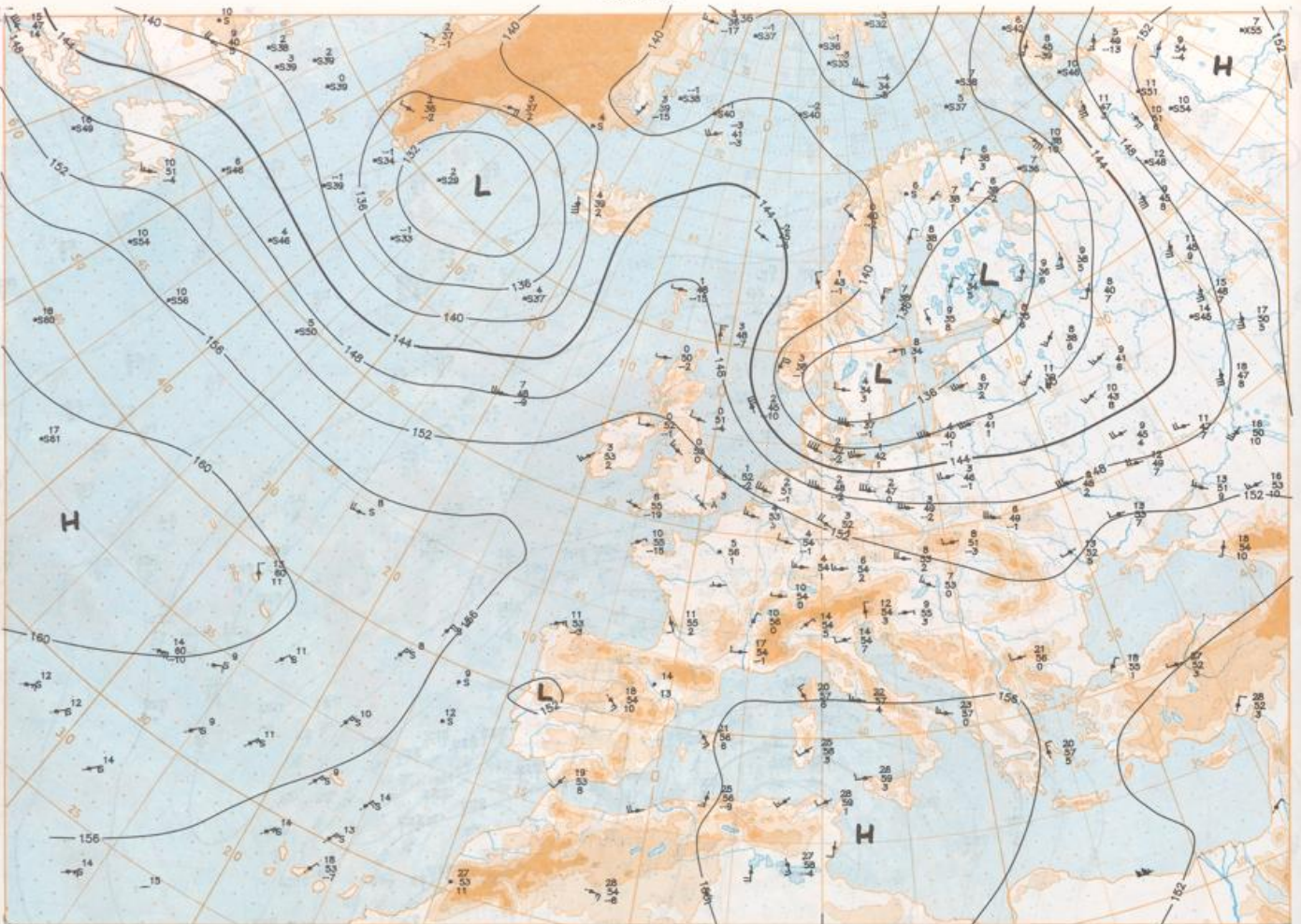
Stereogr. proj. 1:60 000 000 60°N



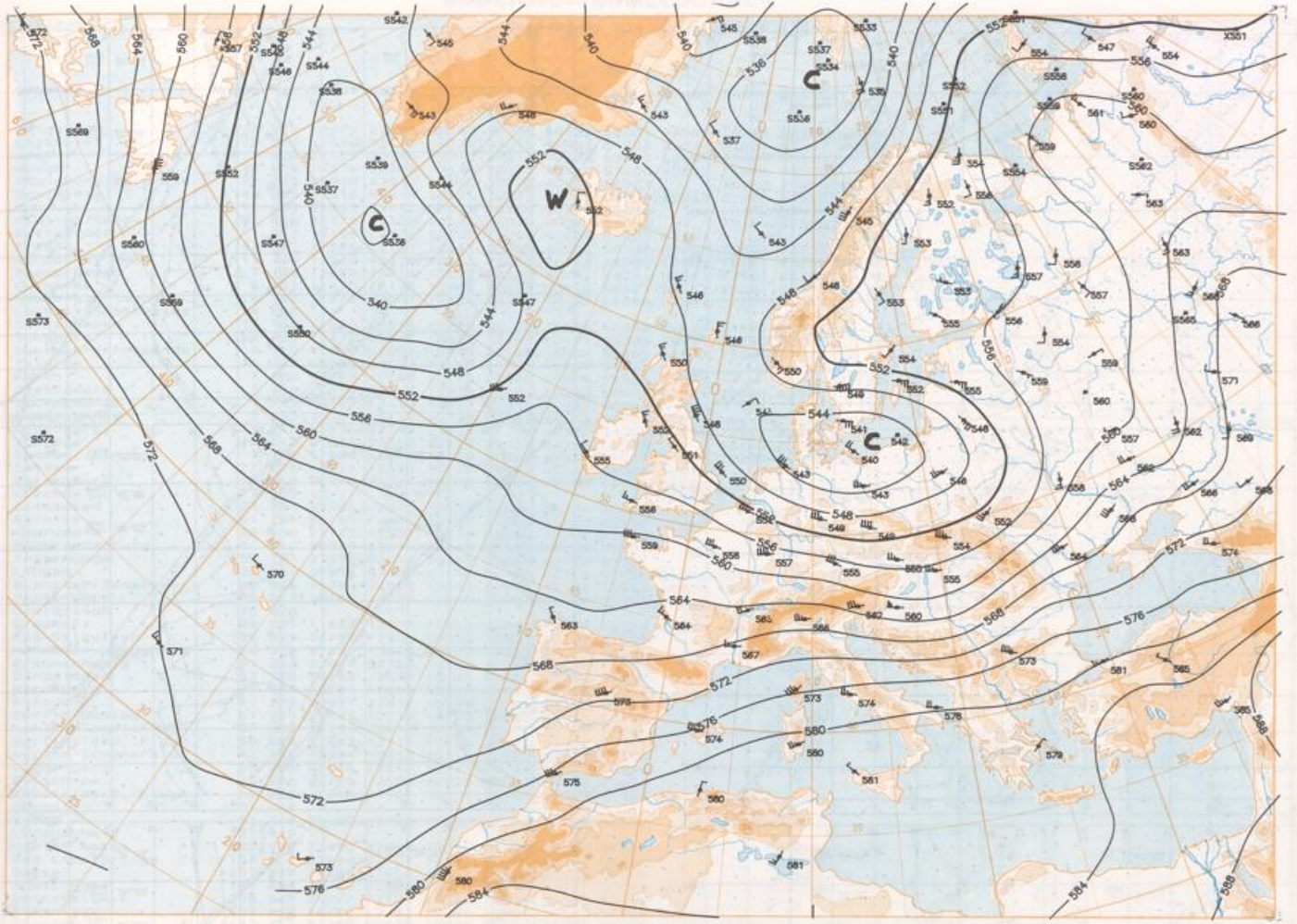


100 hPa 12 UTC

Scale: 1:60 000 000

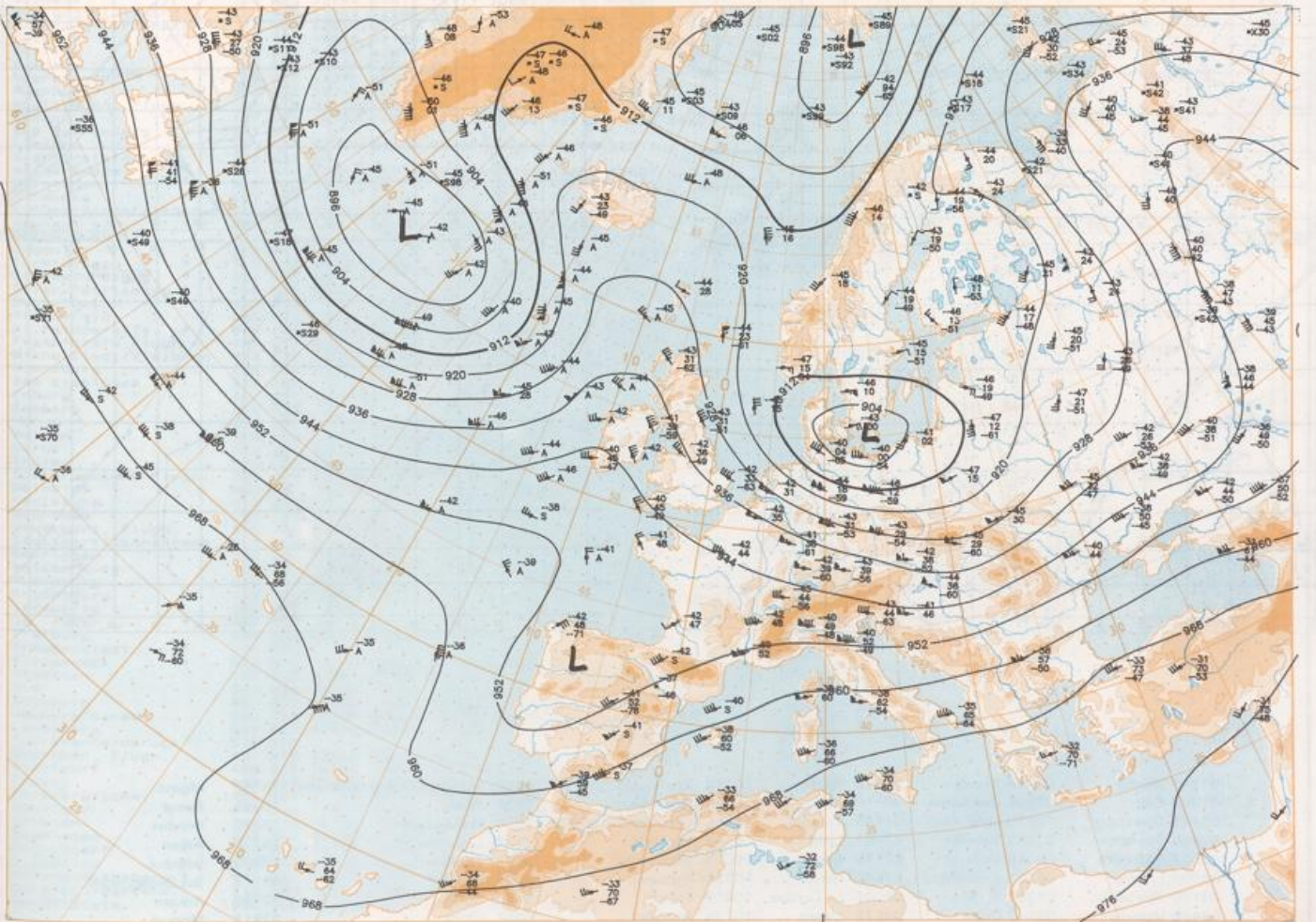


14.08.1994

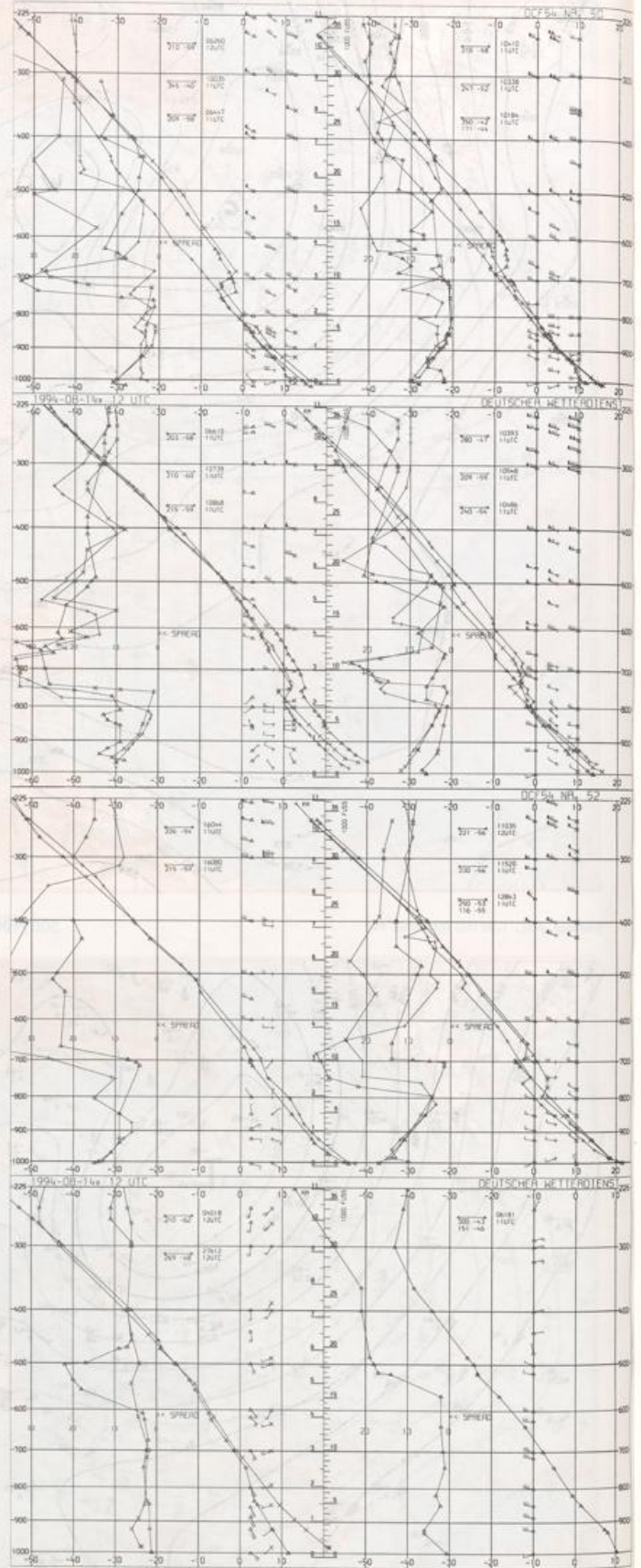
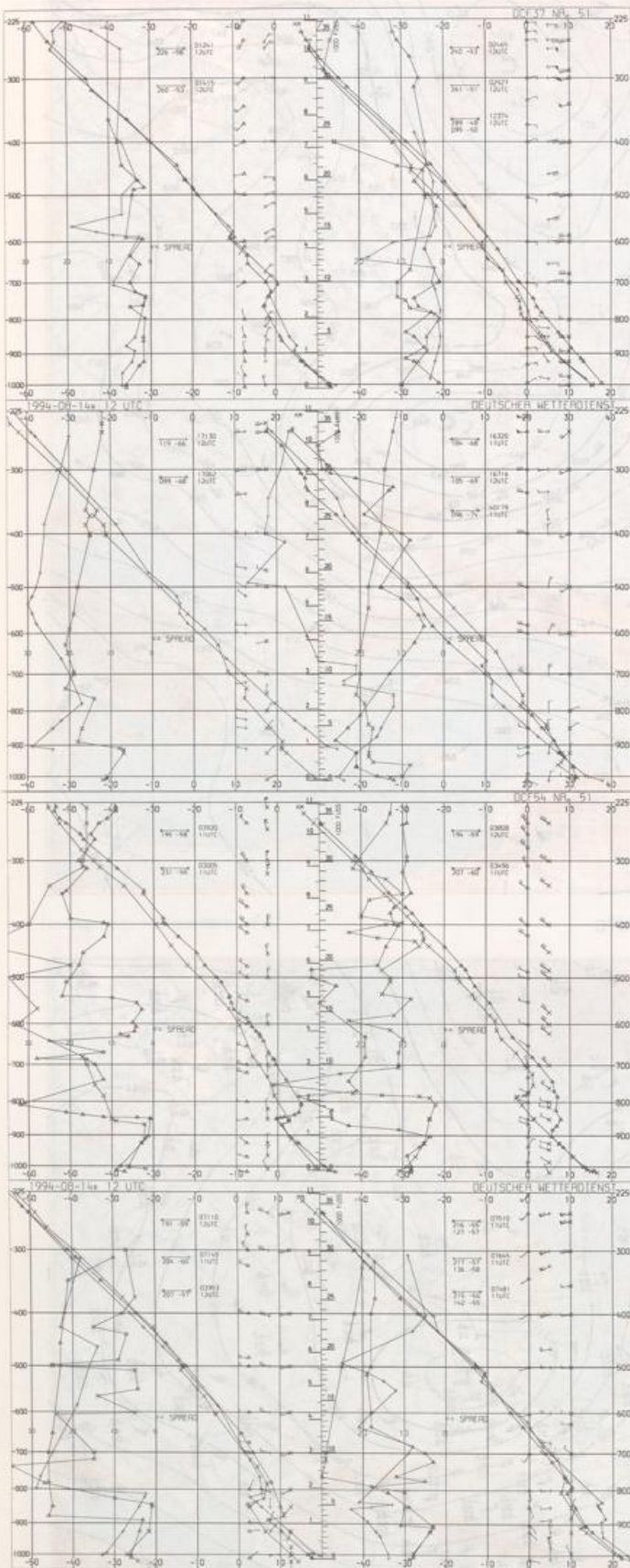


Stereogr. proj. 1:130 000 000 in 60°N

500/1000 hPa 12 UTC



300 hPa 12 UTC



Aerological
Diagrams
12 UTC

01241 Orland	03774 Crewley	06610 Payerna	10184 Greifswald	10868 München-Oberschleißheim	16080 Milano
01384 Oslo	03808 Camborne	07110 Brest	10393 Lindenberg	11035 Wien	16245 Roma
01415 Stavanger	03920 Long Kesh	07145 Trappes	10486 Dresden-Wahnsdorf	11520 Praha-Libus	16320 Brindisi
02465 Stockholm	03953 Valentia	07481 Lyon	10548 Meiningen	12374 Legionowo	16716 Athen
02527 Göteborg	04018 Keflavik	07510 Bordeaux	10035 Schleswig	12843 Budapest	17062 Istanbul
03005 Lerwick	08181 København	07845 Nimes	10338 Hannover	13275 Beograd	40179 Bet Dagan/Israel
03170 Shanwell	08260 De Bilt	08001 La Coruna	10410 Essen	15420 Bukarest	17130 Ankara
03496 Hemsby	08447 Uccle	08579 Lisboa	10739 Stuttgart	16044 Udine	27612 Moskau

Europäischer Wetterbericht European Meteorological Bulletin Bulletin Météorologique Européen Boletín Meteorológico Europeo

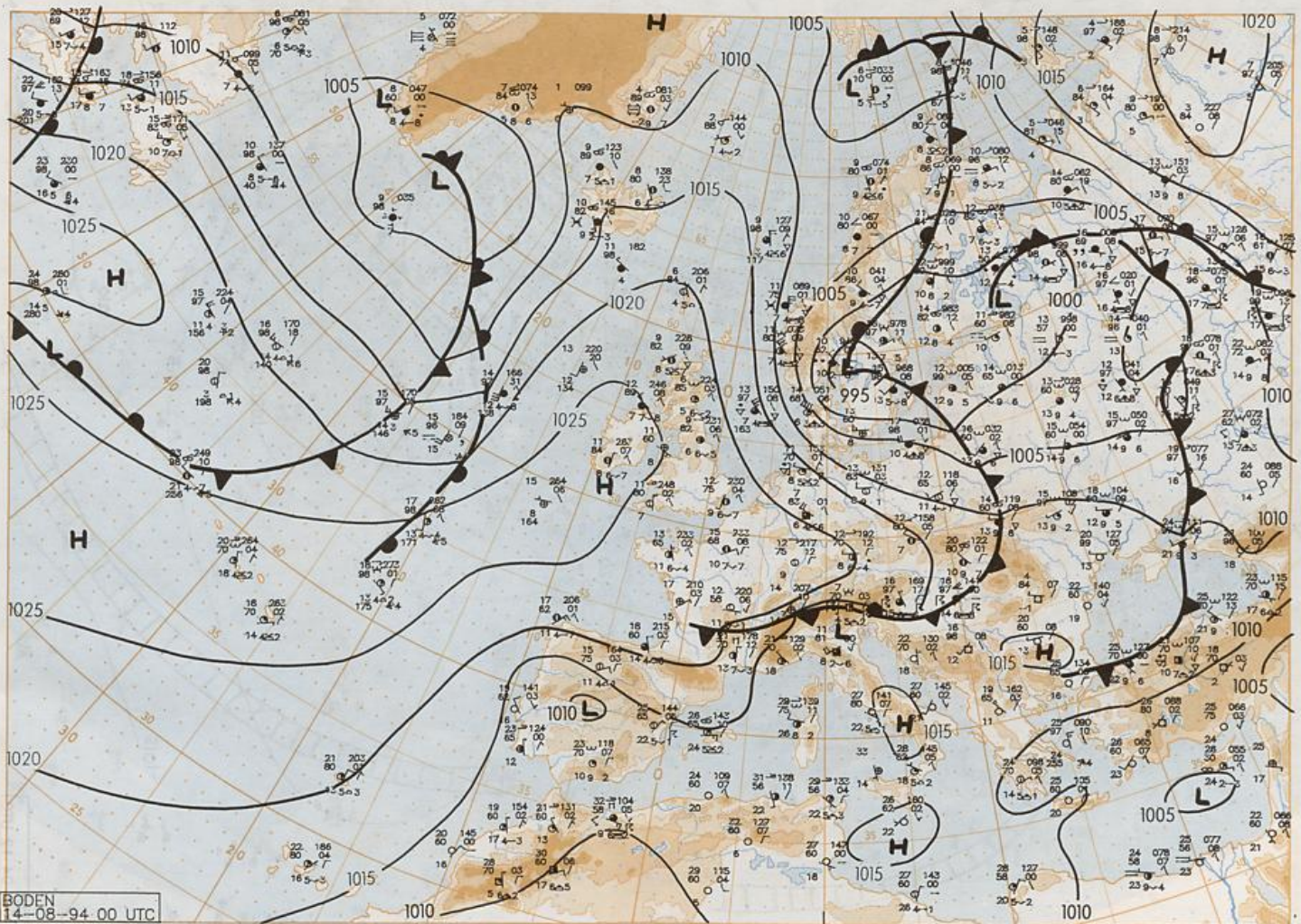
Amtsblatt des Deutschen Wetterdienstes

Druck und Verlag: Deutscher Wetterdienst - Zentralamt - Frankfurter Str. 135, 63067 Offenbach a.M., Postfach 100465, 63004 Offenbach a.M. Tel.: (069) 8062-2284

Er erscheint täglich Bezugspreis jährlich DM 420,- zuzügl. Porto Nachdruck nicht gestattet	Issued daily Yearly price DM 420,- plus postage All rights reserved	Publié quotidiennement Prix annuel DM 420,- plus port Reproduction interdite	Se publica diariamente Precio de suscripción anual DM 420,- plus porte Se prohíbe la reproducción
---	--	---	--

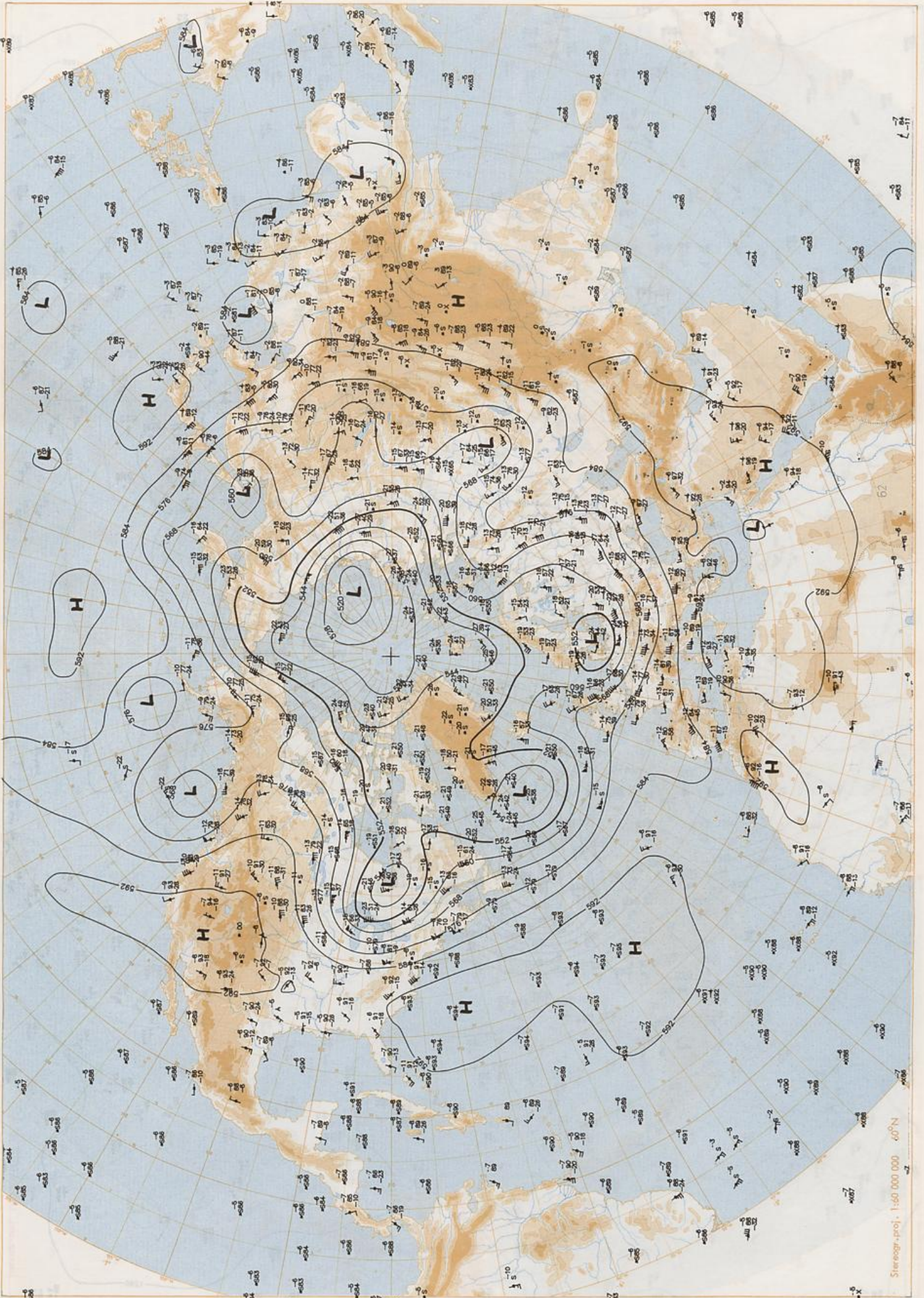
Jahrgang Volume Volumen	19	Sonntag Sunday Dimanche Domingo	14.08.1994	Nummer Number Número Número	226
-------------------------------	----	--	------------	--------------------------------------	-----

Inhalt	Content	Contenu	Contenido
Bodenwetterkarte 00 UTC	Surface chart 00 UTC	Carte de surface à 00 UTC	Análisis en superficie a las 00 UTC
Bodenwetterkarte Nordhemisphäre 12 UTC	Surface chart northern hemisphere 12 UTC	Carte de surface sur l'hémisphère nord à 12 UTC	Análisis en superficie hemisferio norte a las 12 UTC
500-hPa-Fläche Nordhemisphäre 12 UTC	500 hPa surface northern hemisphere 12 UTC	Surface 500 hPa sur l'hémisphère nord à 12 UTC	Topografía de la superficie de 500 hPa hemisferio norte de las 12 UTC
200-hPa-Fläche Nordhemisphäre 12 UTC	200 hPa surface northern hemisphere 12 UTC	Surface 200 hPa sur l'hémisphère nord à 12 UTC	Topografía de la superficie de 200 hPa hemisferio norte de las 12 UTC
100-hPa-Fläche Nordhemisphäre 12 UTC	100 hPa surface northern hemisphere 12 UTC	Surface 100 hPa sur l'hémisphère nord à 12 UTC	Topografía de la superficie de 100 hPa hemisferio norte de las 12 UTC
850-hPa 12 UTC, 700 hPa 12 UTC	850 hPa 12 UTC, 700 hPa 12 UTC	850 hPa 12 UTC, 700 hPa 12 UTC	850 hPa 12 UTC, 700 hPa 12 UTC
Relative Topographie 500/1000 hPa 12 UTC	Thickness chart 500/1000 hPa 12 UTC	Carte d'épaisseur 500/1000 hPa 12 UTC	Relativa 500/1000 hPa 12 UTC
300-hPa 12 UTC	300 hPa 12 UTC	300 hPa 12 UTC	300 hPa 12 UTC
Aerologische Diagramme 12 UTC	Aerological diagrams 12 UTC	Diagrammes aérologiques 12 UTC	Diagramas aerológicos 12 UTC



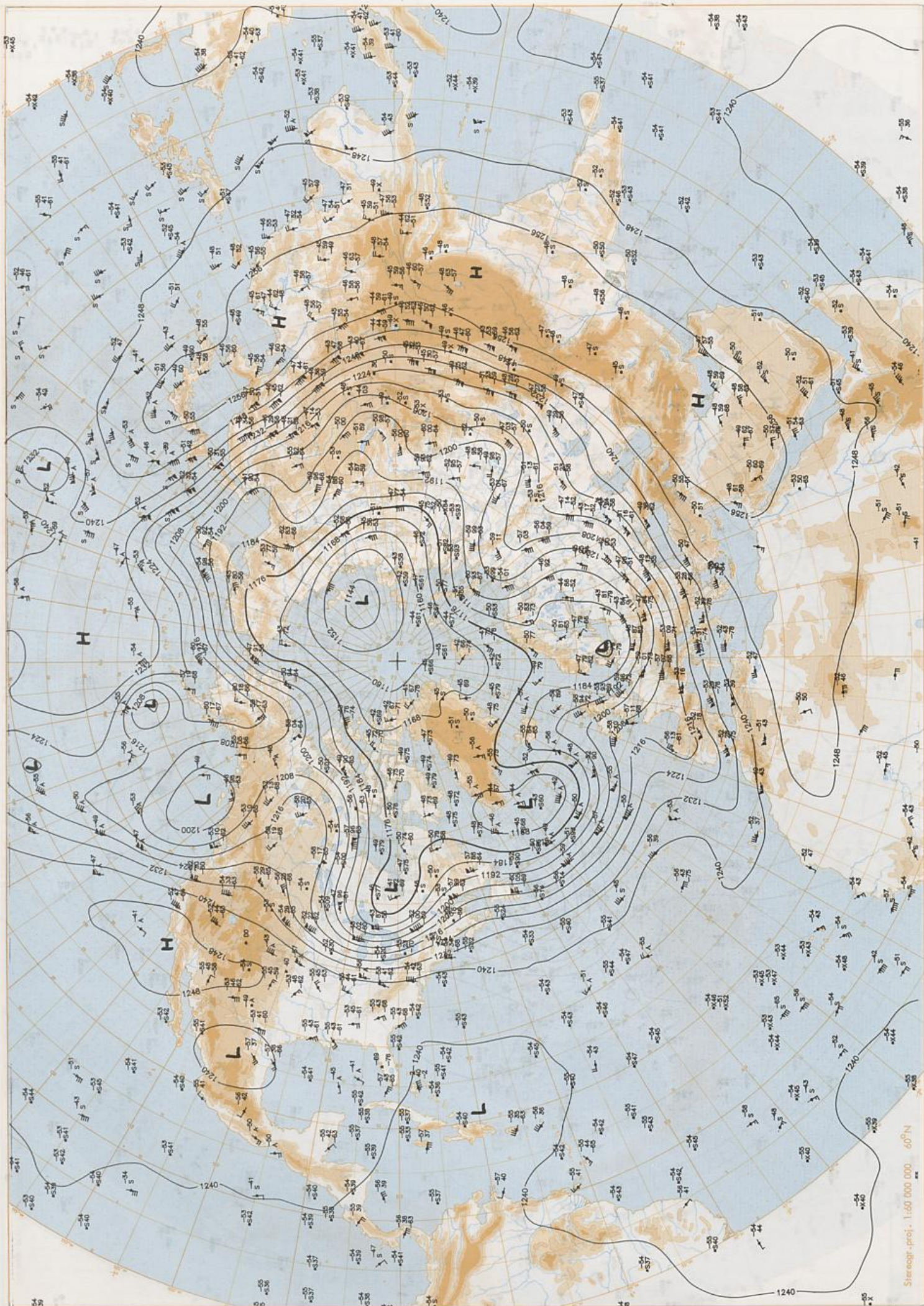
Stereogr. proj. 1:30 000 000 60°N

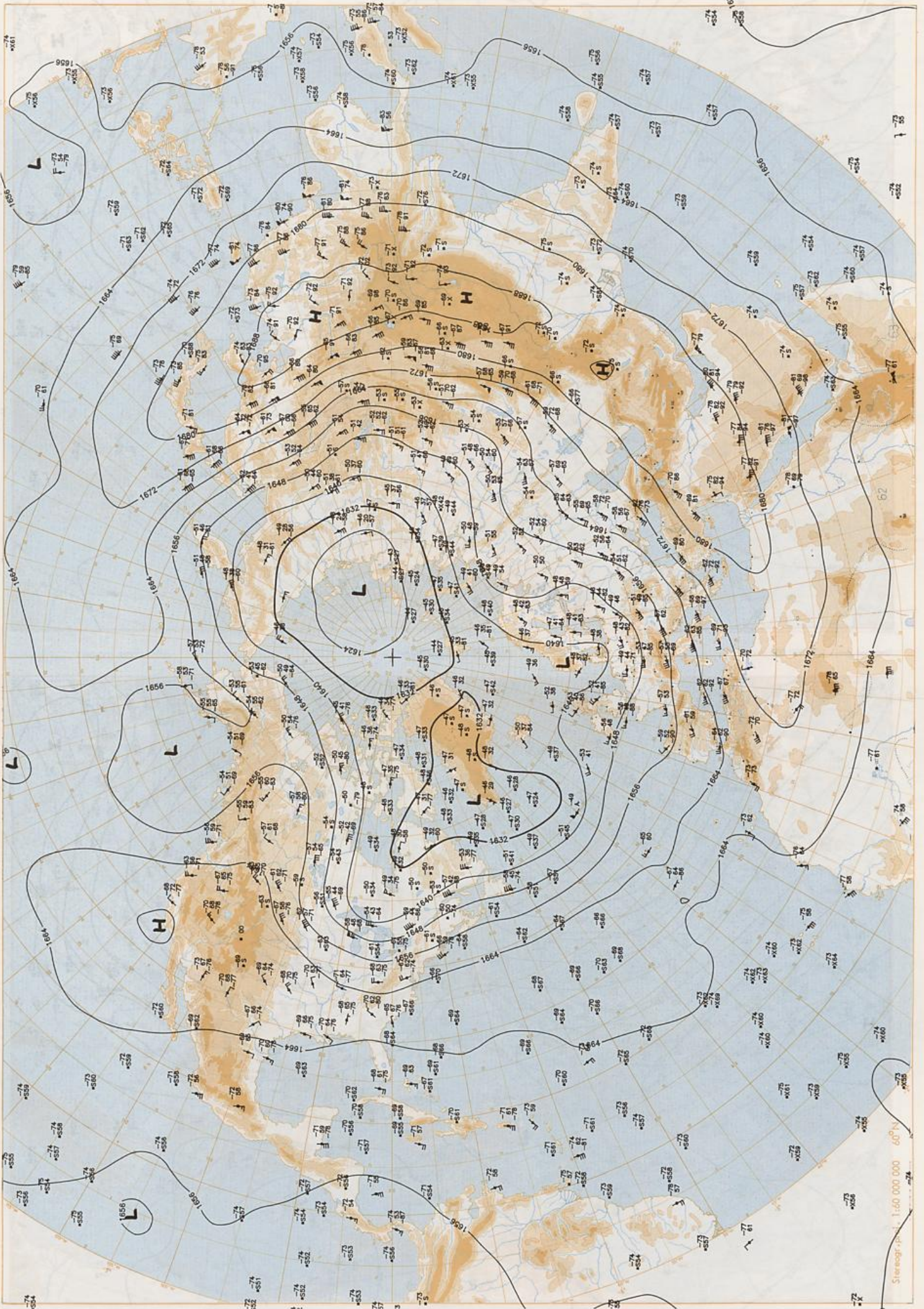
Surface chart 00 UTC



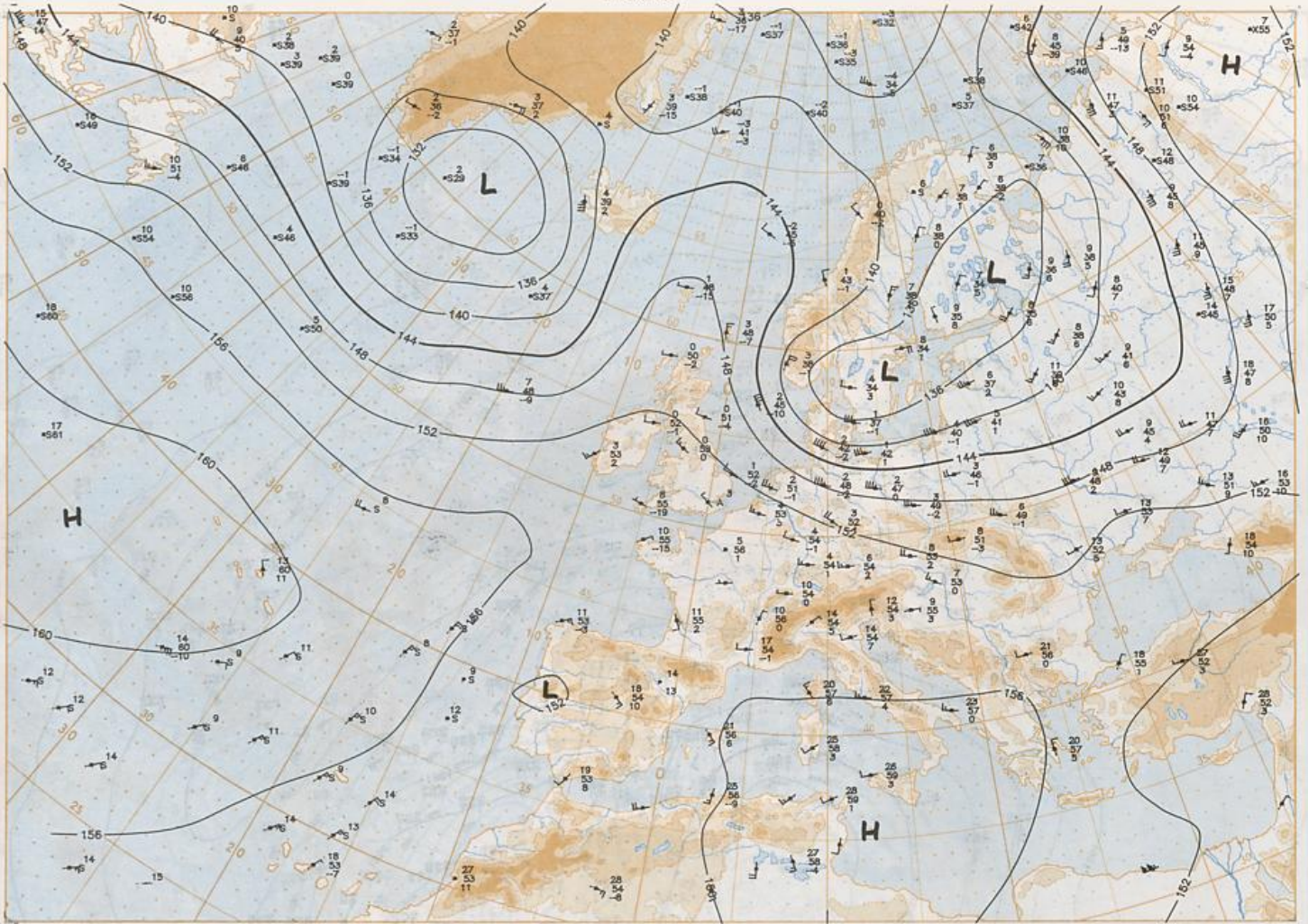
500 hPa 12 UTC

Stereogr. proj. 1:50 000 000 60°N



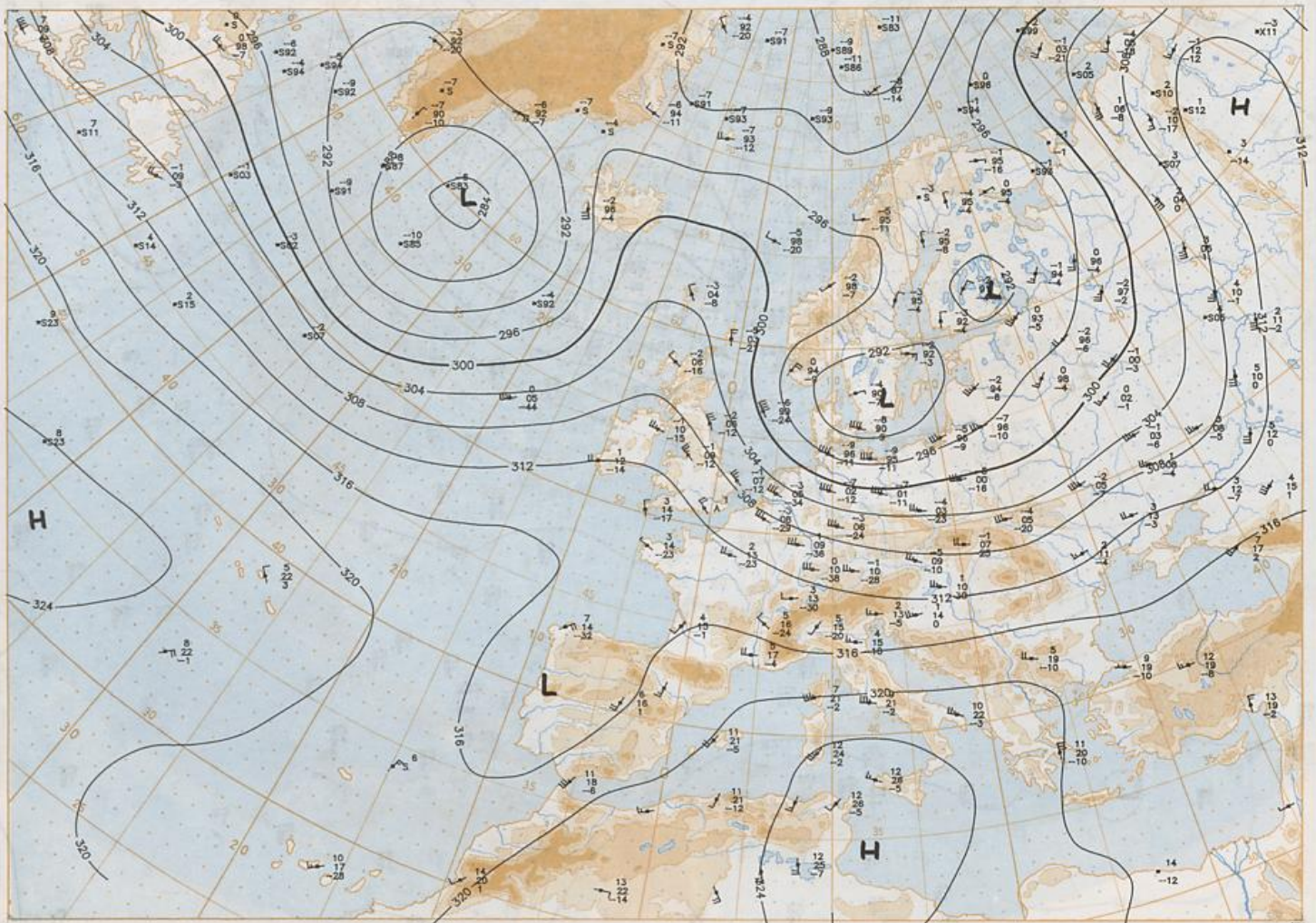


14.08.1994



Stereogr. proj. 1:30 000 000 in 60°N

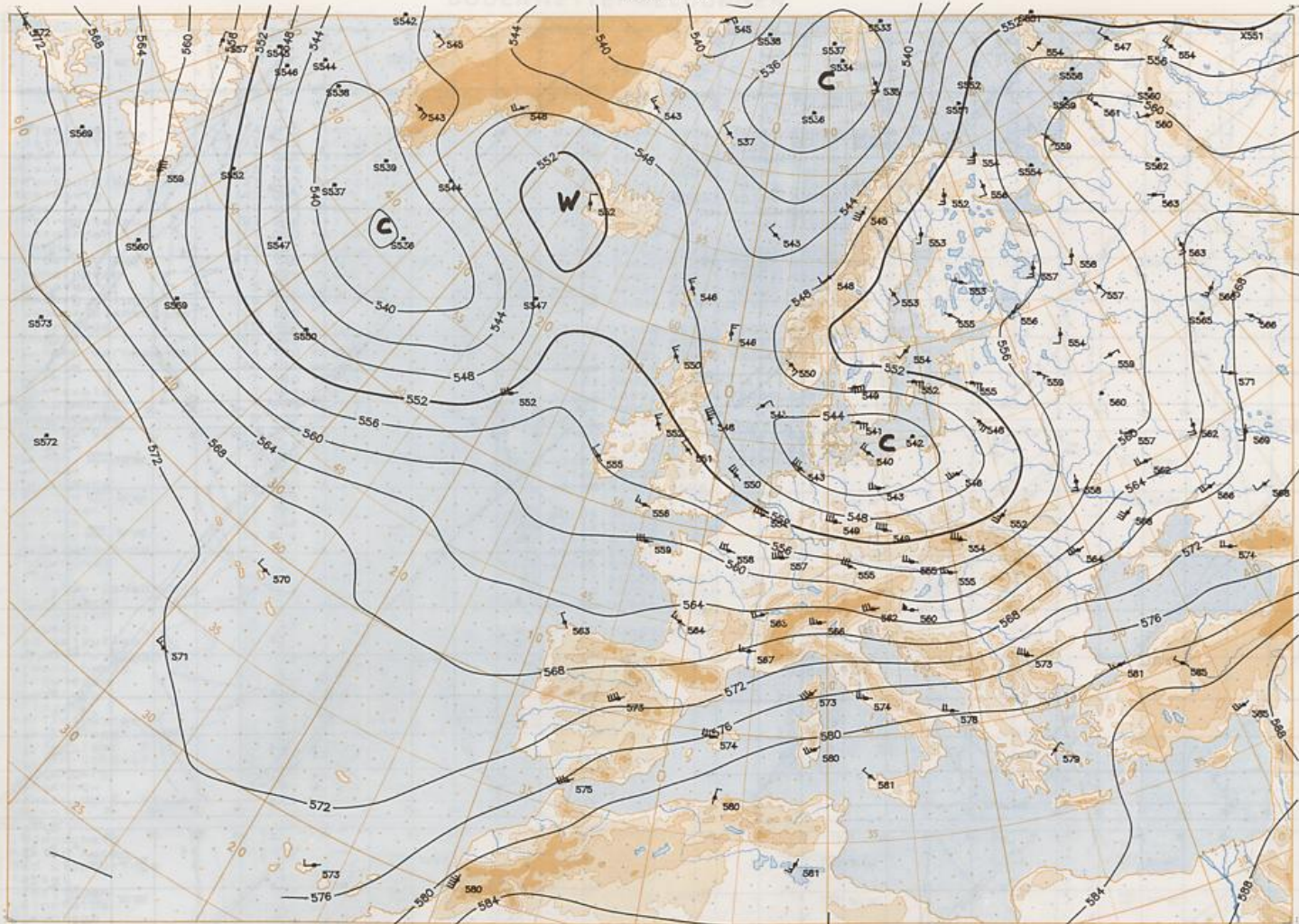
850 hPa 12 UTC



700 hPa 12 UTC

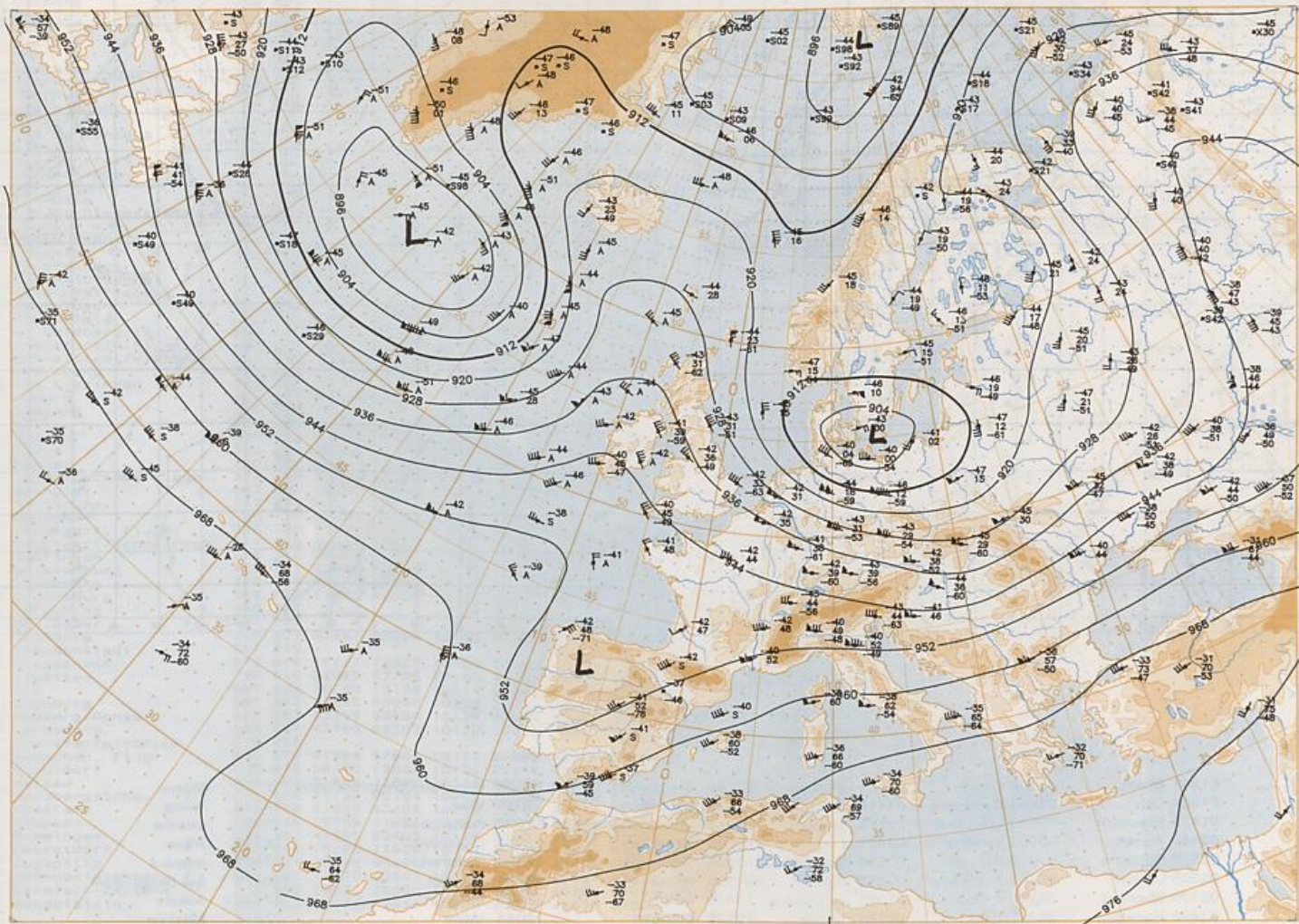
14.08.1994

500 hPa

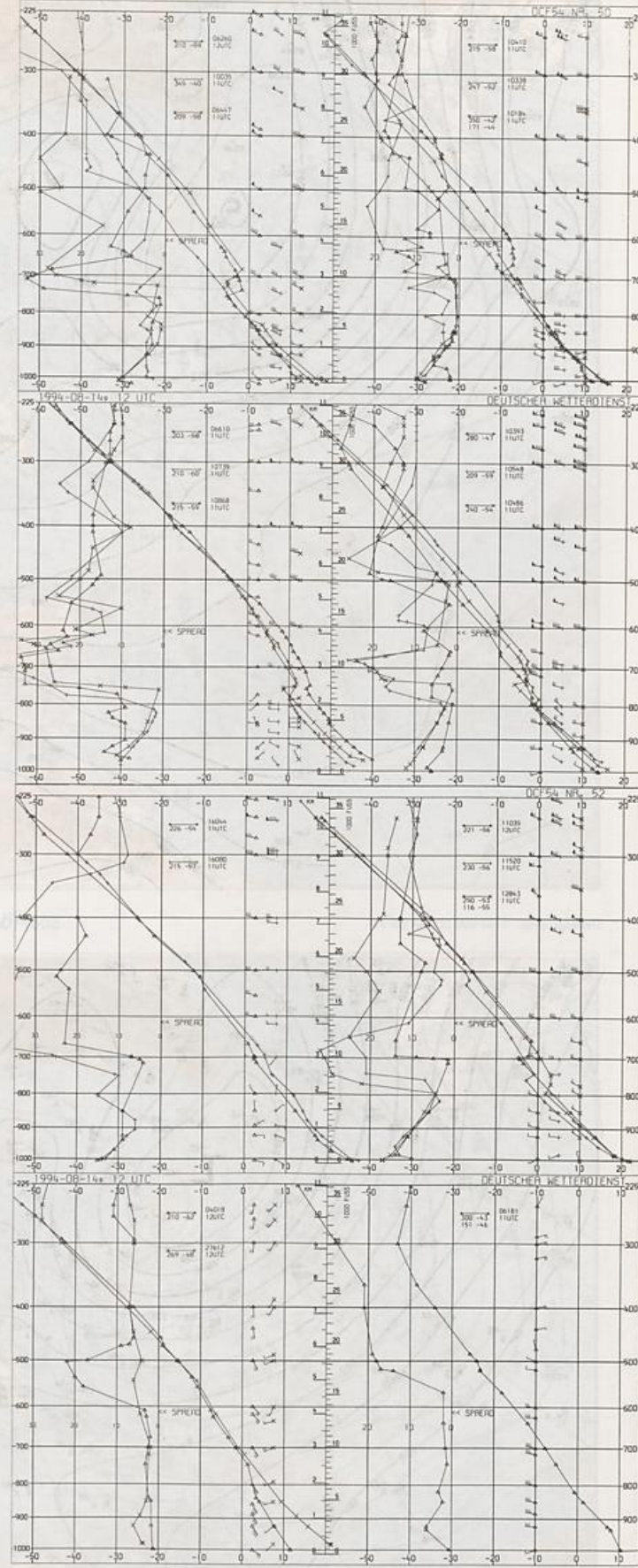
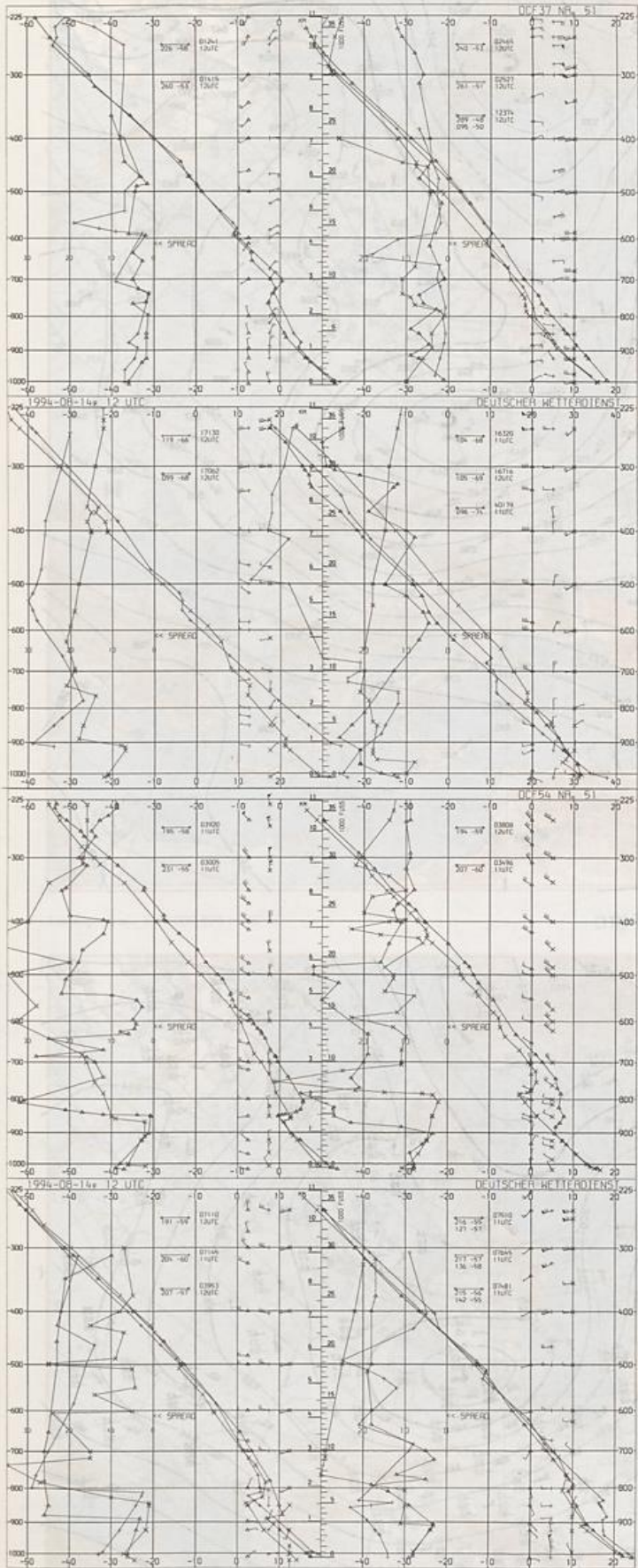


Stereogr. proj. 1:30 000 000 in 60°N

500/1000 hPa 12 UTC



300 hPa 12 UTC



Aerological
Diagrams
12 UTC

- | | | | | | |
|-----------------|-----------------|-----------------|-------------------------|-------------------------------|------------------------|
| 01241 Orland | 03774 Crawley | 06610 Payame | 10184 Greifswald | 10858 München-Oberschleißheim | 16080 Milano |
| 01384 Oslo | 03808 Camborne | 07110 Brest | 10393 Lindenberg | 11035 Wien | 16245 Roma |
| 01415 Stavanger | 03920 Long Keah | 07145 Trappes | 10486 Dresden-Wahnsdorf | 11520 Praha-Libus | 16320 Brindisi |
| 02465 Stockholm | 03953 Valentia | 07481 Lyon | 10548 Meiningen | 12374 Legionowo | 16718 Athen |
| 02527 Goteborg | 04018 Keflavik | 07510 Bordeaux | 10035 Schleswig | 12843 Budapest | 17062 Istanbul |
| 03005 Larwick | 06181 Kobenhavn | 07645 Nimes | 10338 Hannover | 13275 Beograd | 40179 Bet Dagan/Israel |
| 03170 Shanwell | 06280 De Bilt | 08001 La Coruna | 10410 Essen | 15420 Bukarest | 17130 Ankara |
| 03498 Hemsby | 06447 Uccle | 08579 Lisboa | 10739 Stuttgart | 16044 Udine | 27812 Moskva |

Europäischer Wetterbericht European Meteorological Bulletin Bulletin Météorologique Européen Boletín Meteorológico Europeo

Amtsblatt des Deutschen Wetterdienstes

Druck und Verlag: Deutscher Wetterdienst -Zentralamt- Frankfurter Str. 135, 63067 Offenbach a.M., Postfach 100465, 63004 Offenbach a.M. Tel.: (069) 8062-2284

Erscheint täglich
Bezugspreis jährlich DM 420,-
zuzügl. Porto
Nachdruck nicht gestattet

Issued daily
Yearly price DM 420,-
plus postage
All rights reserved

Publié quotidiennement
Prix annuel DM 420,-
plus port
Reproduction interdite

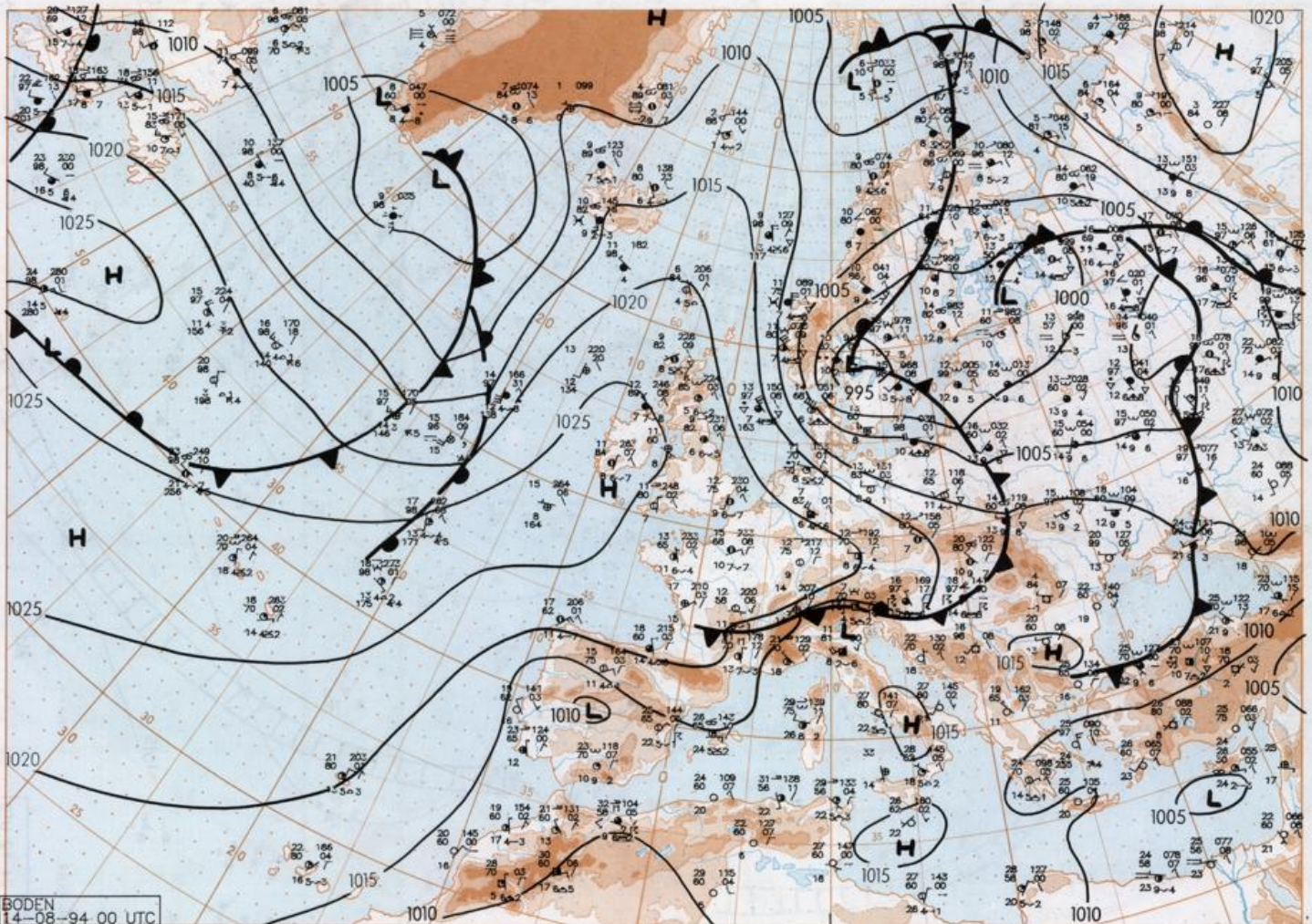
Se publica diariamente
Precio de suscripción anual DM 420,-
plus porte
Se prohíbe la reproducción

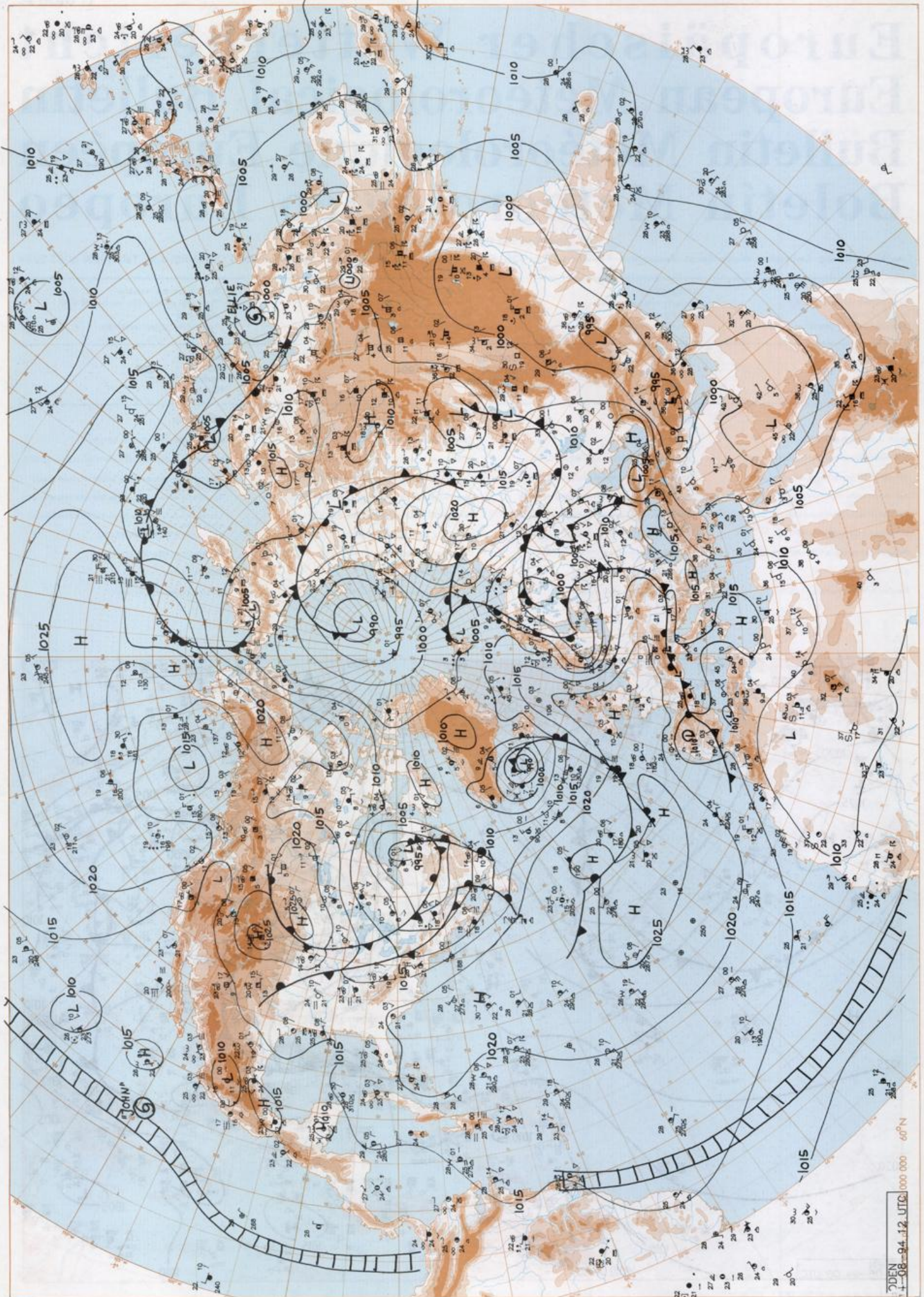
Jahrgang
Volume
Volume
Volumen 19

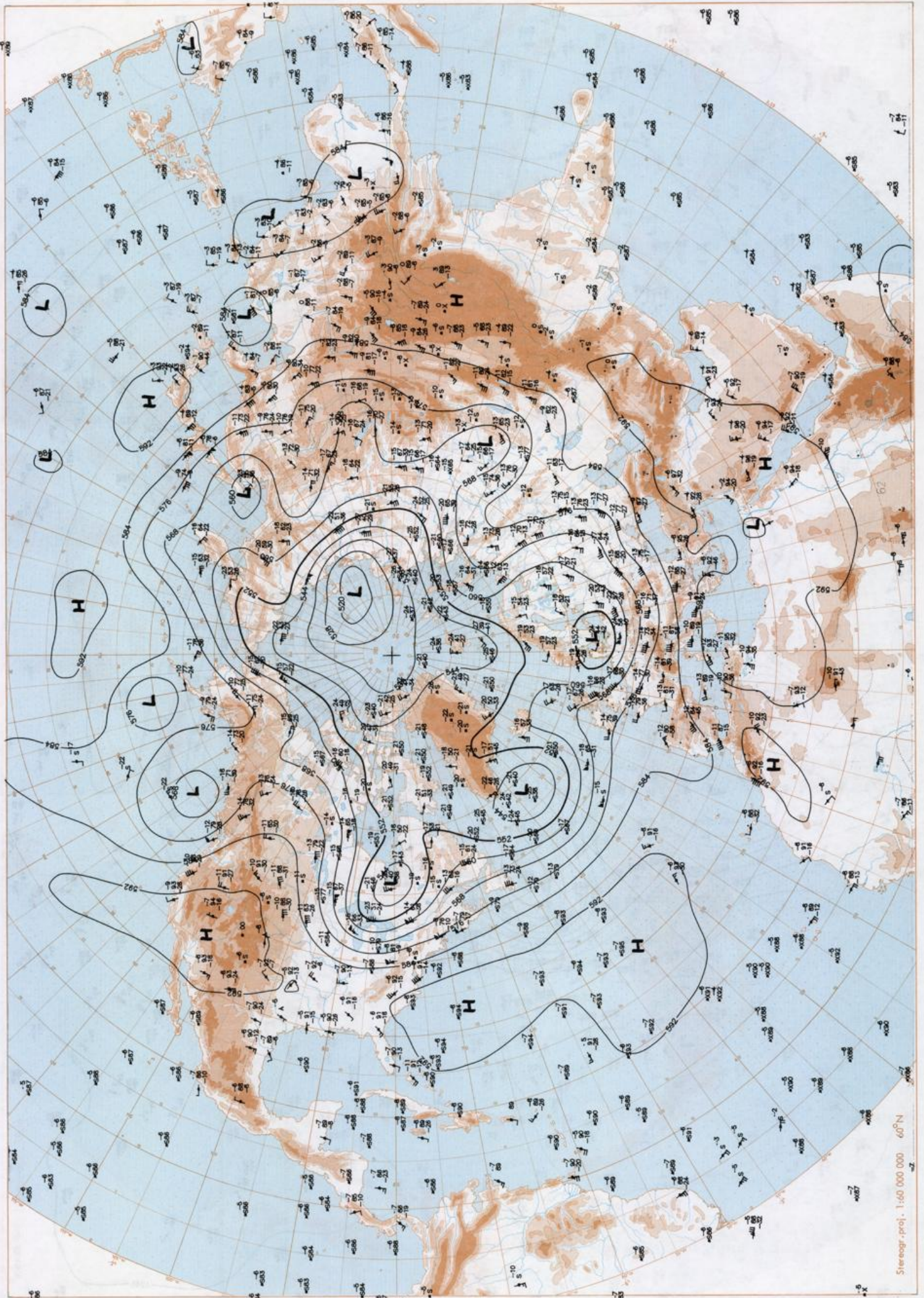
Sonntag
Sunday 14.08.1994
Dimanche
Domingo

Nummer
Number 226
Número
Número

Inhalt	Content	Contenu	Contenido
Bodenwetterkarte 00 UTC	Surface chart 00 UTC	Carte de surface à 00 UTC	Análisis en superficie a las 00 UTC
Bodenwetterkarte Nordhemisphäre 12 UTC	Surface chart northern hemisphere 12 UTC	Carte de surface sur l'hémisphère nord à 12 UTC	Análisis en superficie hemisferio norte a las 12 UTC
500-hPa-Fläche Nordhemisphäre 12 UTC	500 hPa surface northern hemisphere 12 UTC	Surface 500 hPa sur l'hémisphère nord à 12 UTC	Topografía de la superficie de 500 hPa hemisferio norte de las 12 UTC
200-hPa-Fläche Nordhemisphäre 12 UTC	200 hPa surface northern hemisphere 12 UTC	Surface 200 hPa sur l'hémisphère nord à 12 UTC	Topografía de la superficie de 200 hPa hemisferio norte de las 12 UTC
100-hPa-Fläche Nordhemisphäre 12 UTC	100 hPa surface northern hemisphere 12 UTC	Surface 100 hPa sur l'hémisphère nord à 12 UTC	Topografía de la superficie de 100 hPa hemisferio norte de las 12 UTC
850-hPa 12 UTC, 700 hPa 12 UTC	850 hPa 12 UTC, 700 hPa 12 UTC	850 hPa 12 UTC, 700 hPa 12 UTC	850 hPa 12 UTC, 700 hPa 12 UTC
Relative Topographie 500/1000 hPa 12 UTC	Thickness chart 500/1000 hPa 12 UTC	Carte d'épaisseur 500/1000 hPa 12 UTC	Relativa 500/1000 hPa 12 UTC
300-hPa 12 UTC	300 hPa 12 UTC	300 hPa 12 UTC	300 hPa 12 UTC
Aerologische Diagramme 12 UTC	Aerological diagrams 12 UTC	Diagrammes aérologiques 12 UTC	Diagramas aerológicos 12 UTC

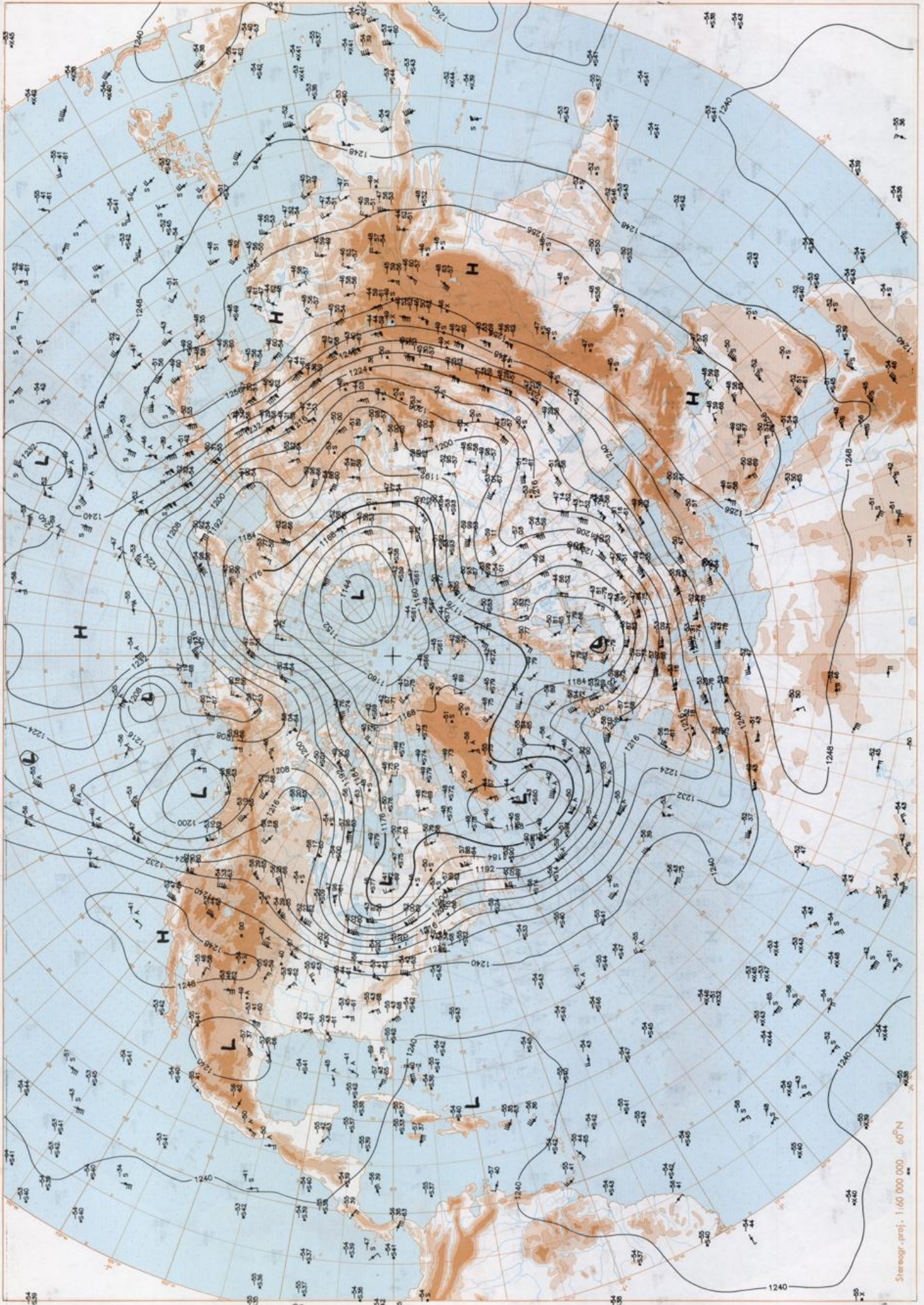




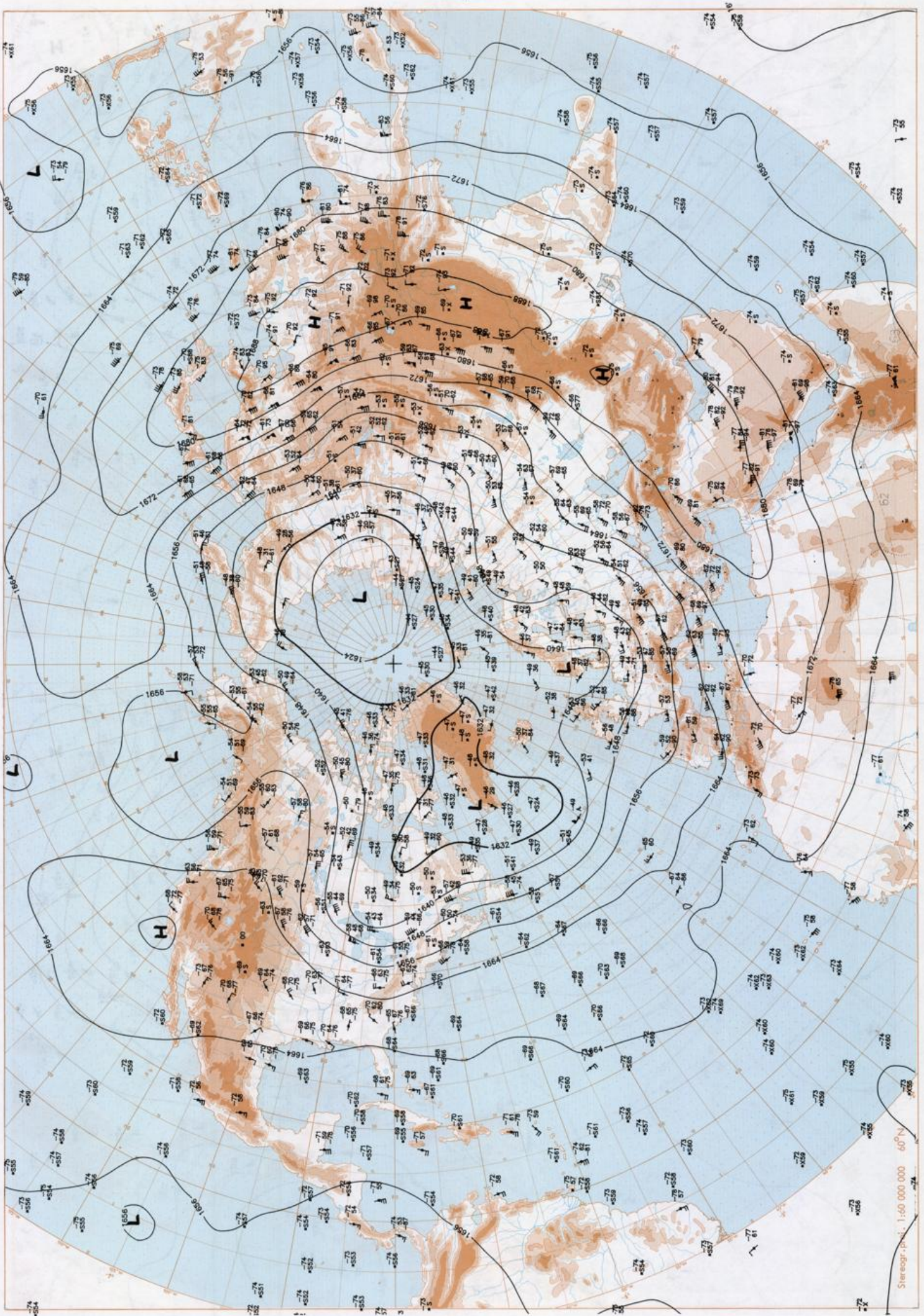


500 hPa 12 UTC

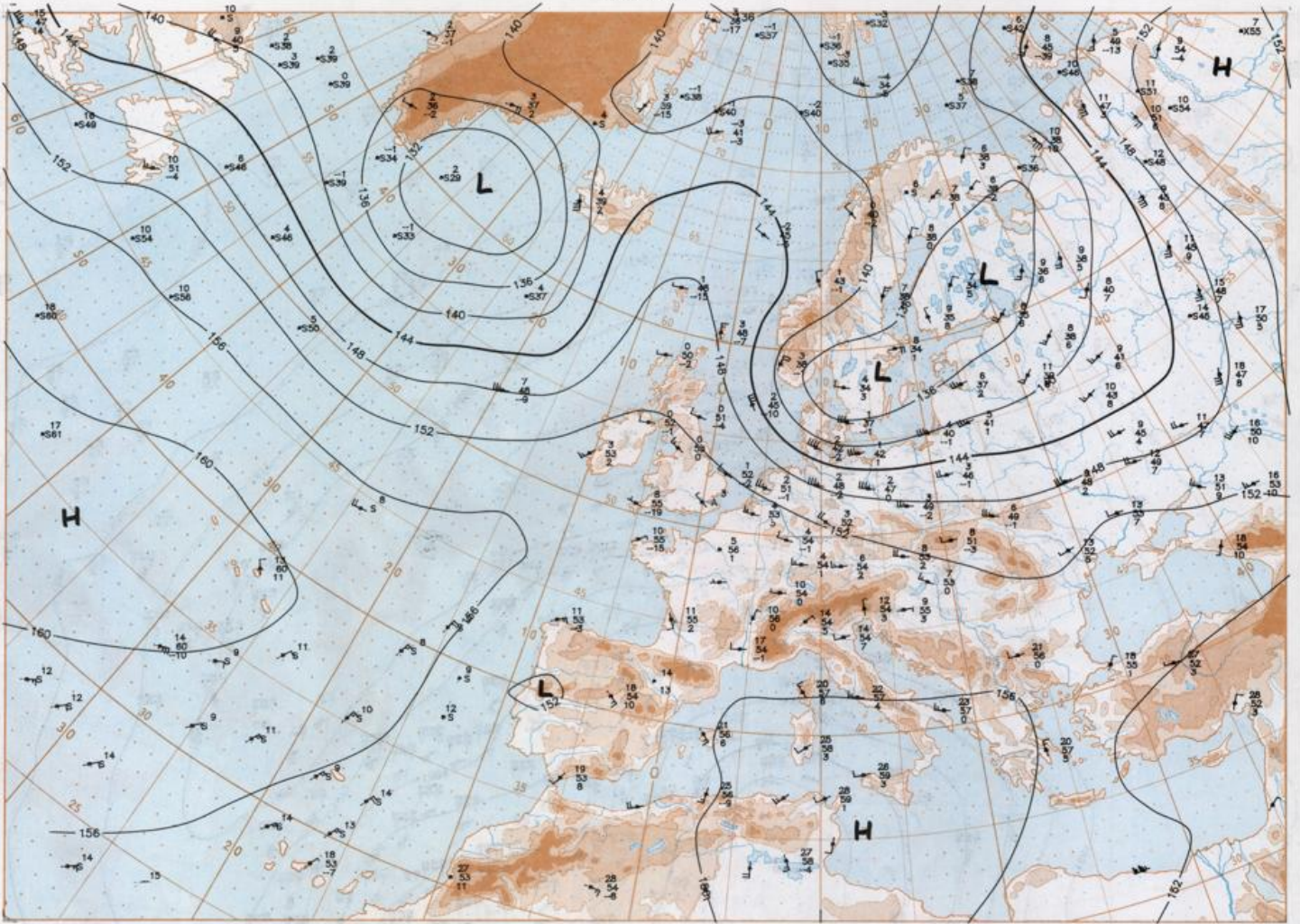
Stereogr. proj. 1:60 000 000 60°N



200 hPa 12 UTC

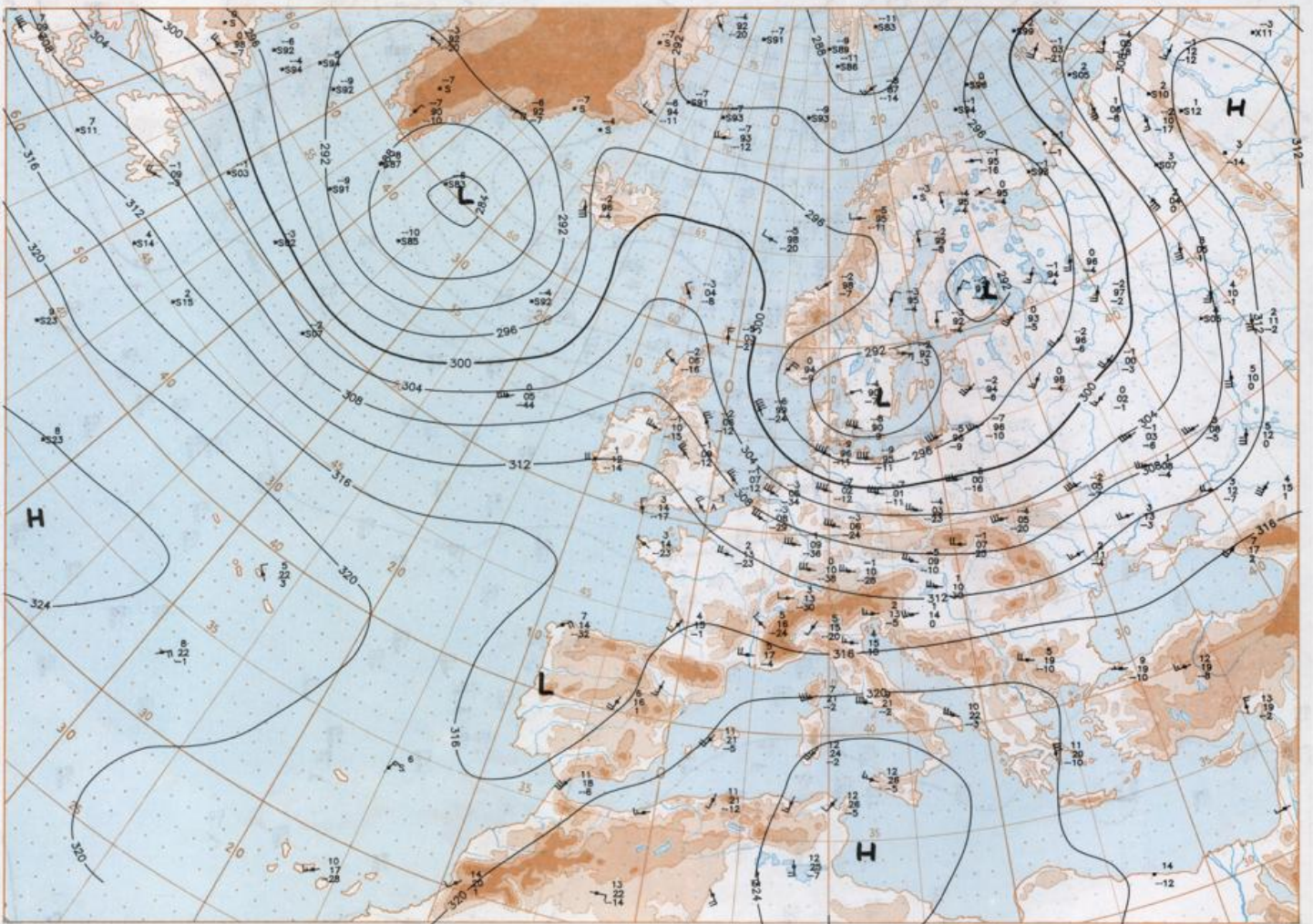


100 hPa 12 UTC

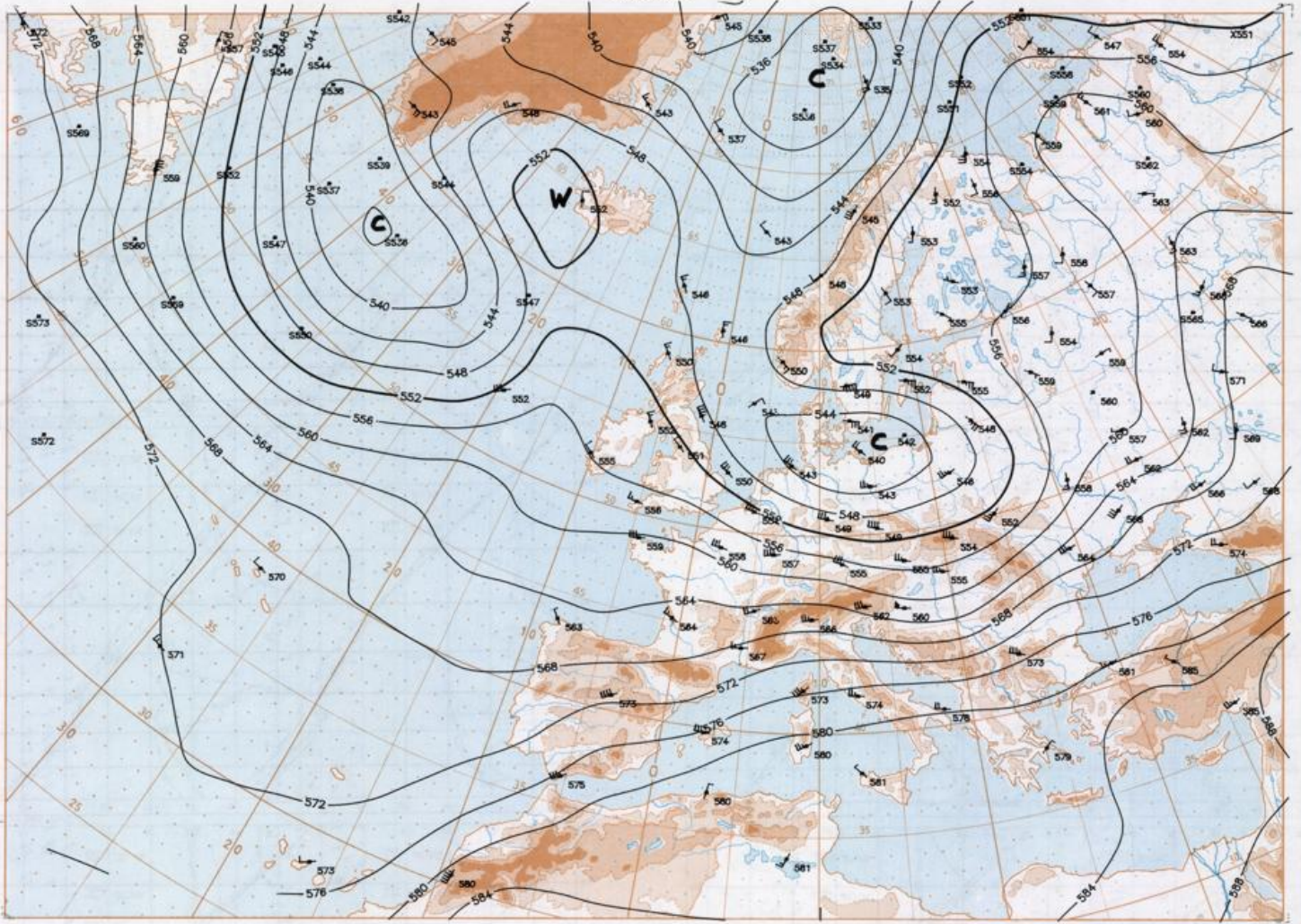


Stereogr. proj. 1:30 000 000 in 60°N

850 hPa 12 UTC

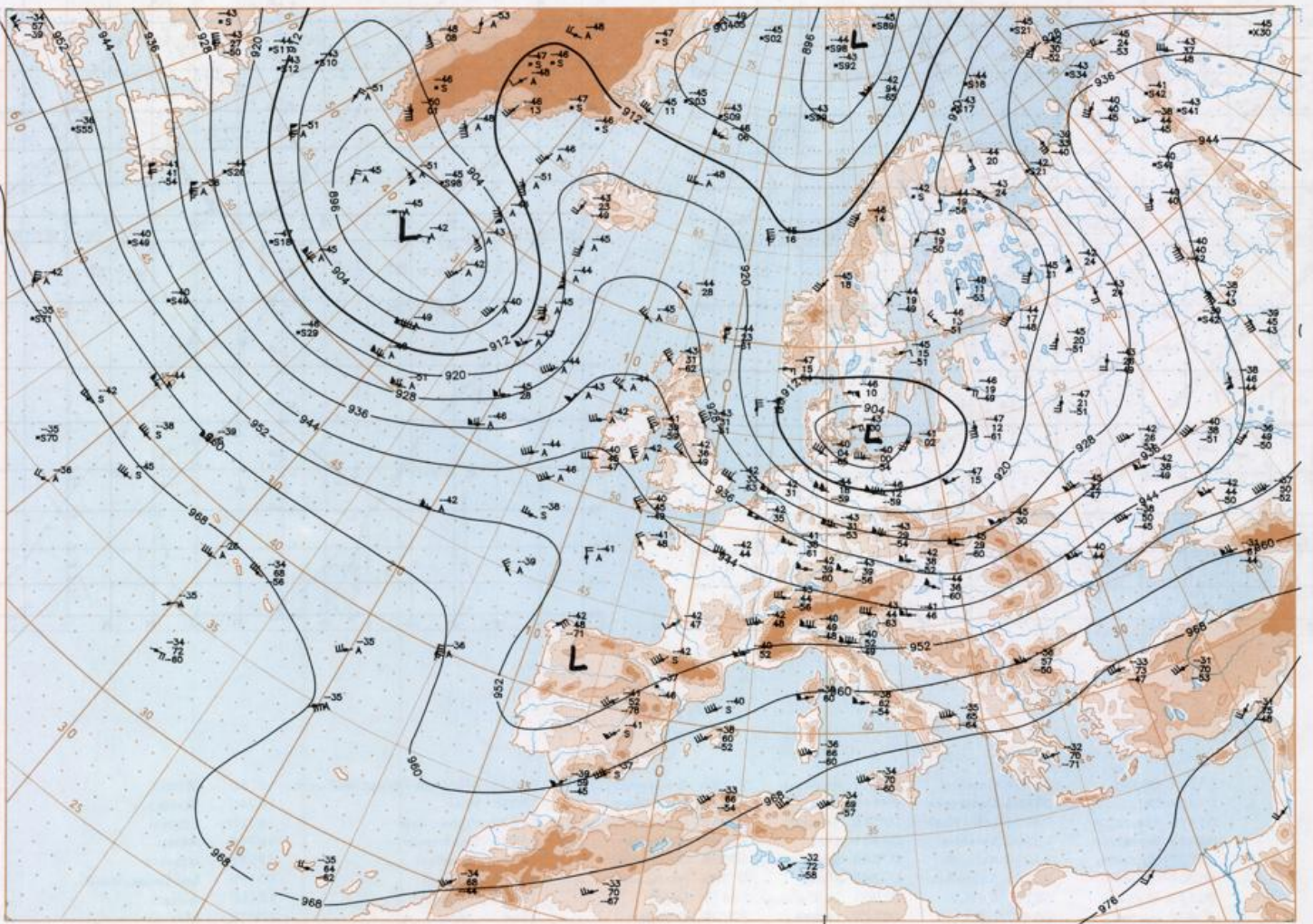


700 hPa 12 UTC

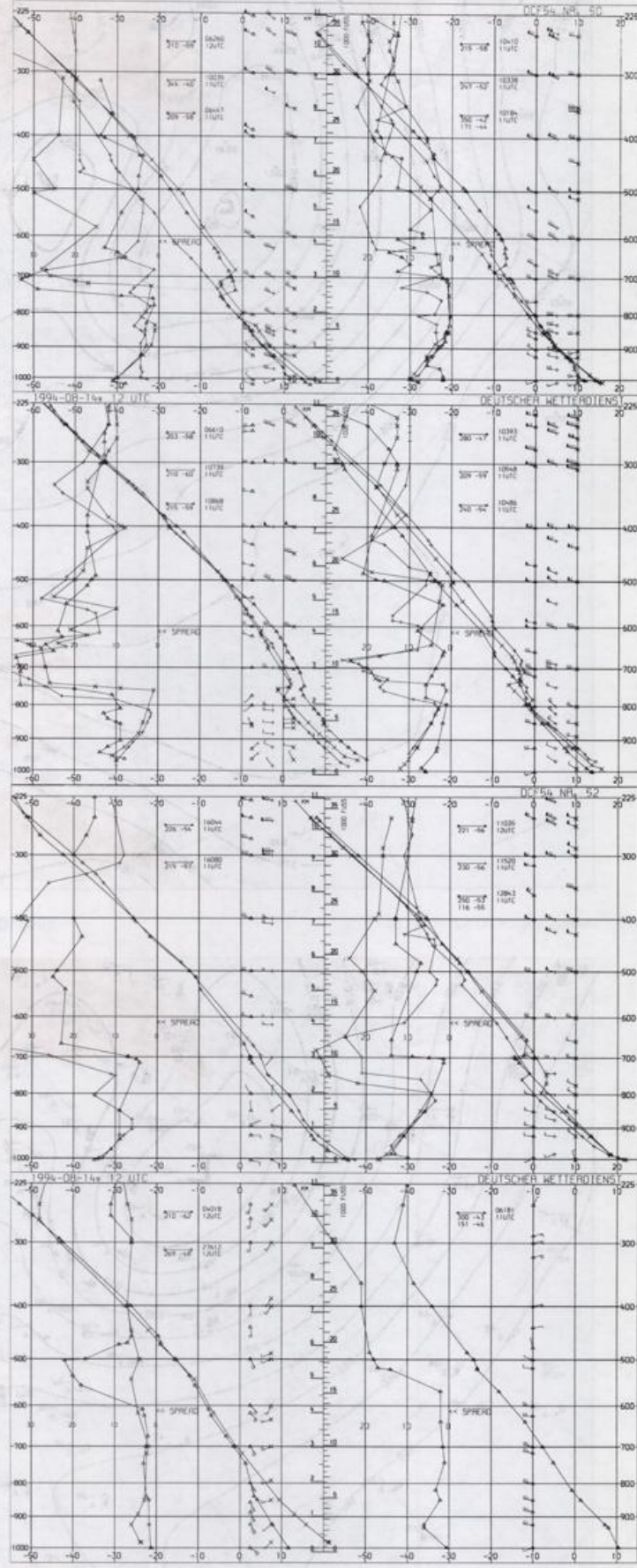
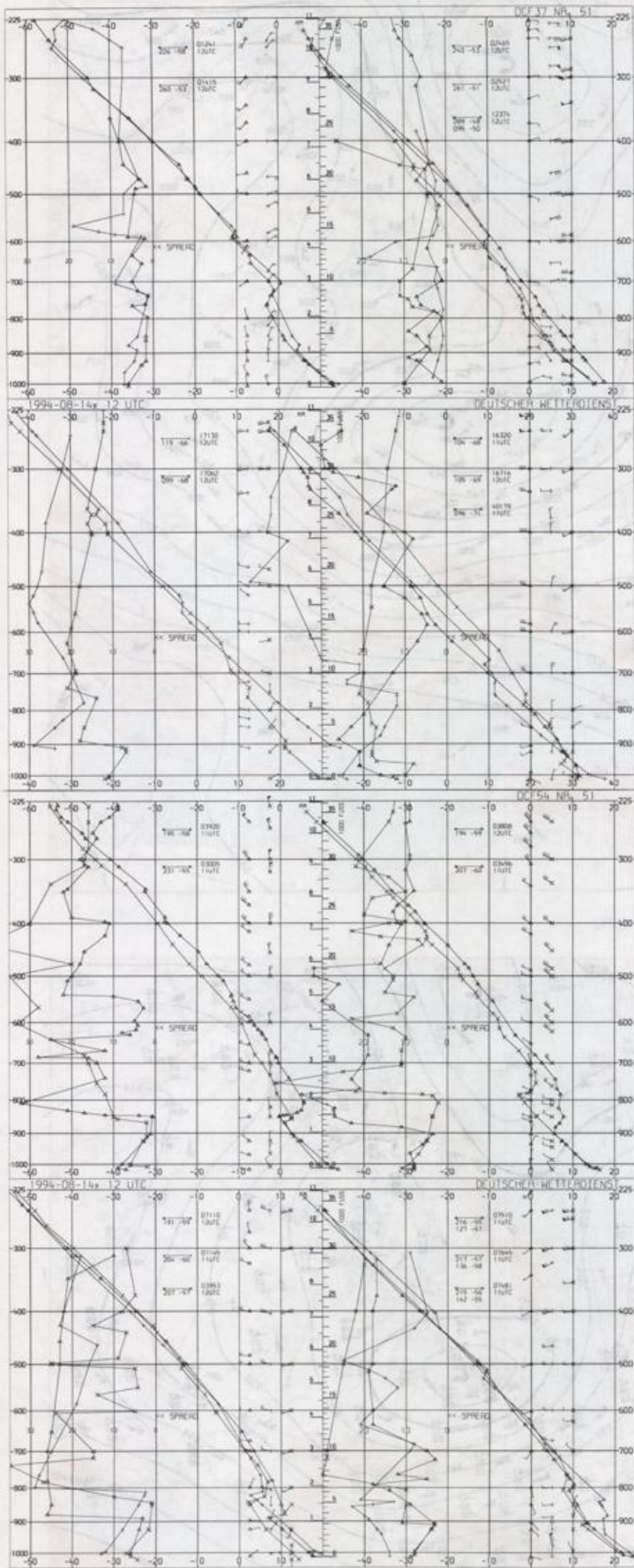


Stereogr. proj. 1:30 000 000 in 60°N

500/1000 hPa 12 UTC



300 hPa 12 UTC



Aerological
Diagrams
12 UTC

01241 Orland	03774 Crawley	06610 Payame	10184 Greifswald	10868 München-Oberschleißheim	16080 Milano
01384 Oelo	03808 Camborne	07110 Brest	10393 Lindenberg	11035 Wien	16245 Roma
01415 Stavanger	03920 Long Kesh	07145 Trappes	10488 Dresden-Wahnedorf	11520 Praha-Libus	16320 Brindisi
02465 Stockholm	03953 Valentia	07481 Lyon	10548 Meiningen	12374 Legionowo	16716 Athen
02527 Goteborg	04018 Keflavik	07510 Bordeaux	10035 Schlewig	12843 Budapest	17082 Istanbul
03005 Lerwick	06181 Kobenhavn	07845 Nimas	10338 Hannover	13275 Beograd	40179 Bet Dagan/Israel
03170 Shanwell	08260 De Bilt	08001 La Coruna	10410 Essen	15420 Bukarest	17130 Ankara
03496 Hemsby	08447 Uccle	08579 Lisboa	10739 Stuttgart	16044 Udine	27612 Moskva