

Europäischer Wetterbericht European Meteorological Bulletin Bulletin Météorologique Européen Boletín Meteorológico Europeo



Amtsblatt des Deutschen Wetterdienstes

Druck und Verlag: Deutscher Wetterdienst, Frankfurter Straße 135, 63067 Offenbach · Postanschrift: 63004 Offenbach, Postfach 100465, Telefon: (0 69) 80 62-22 84

D 6168 A
ISSN 0341-2970

Erscheint täglich
Bezugspreis jährlich DM 456.-
zuzügl. Porto
Nachdruck nicht gestattet

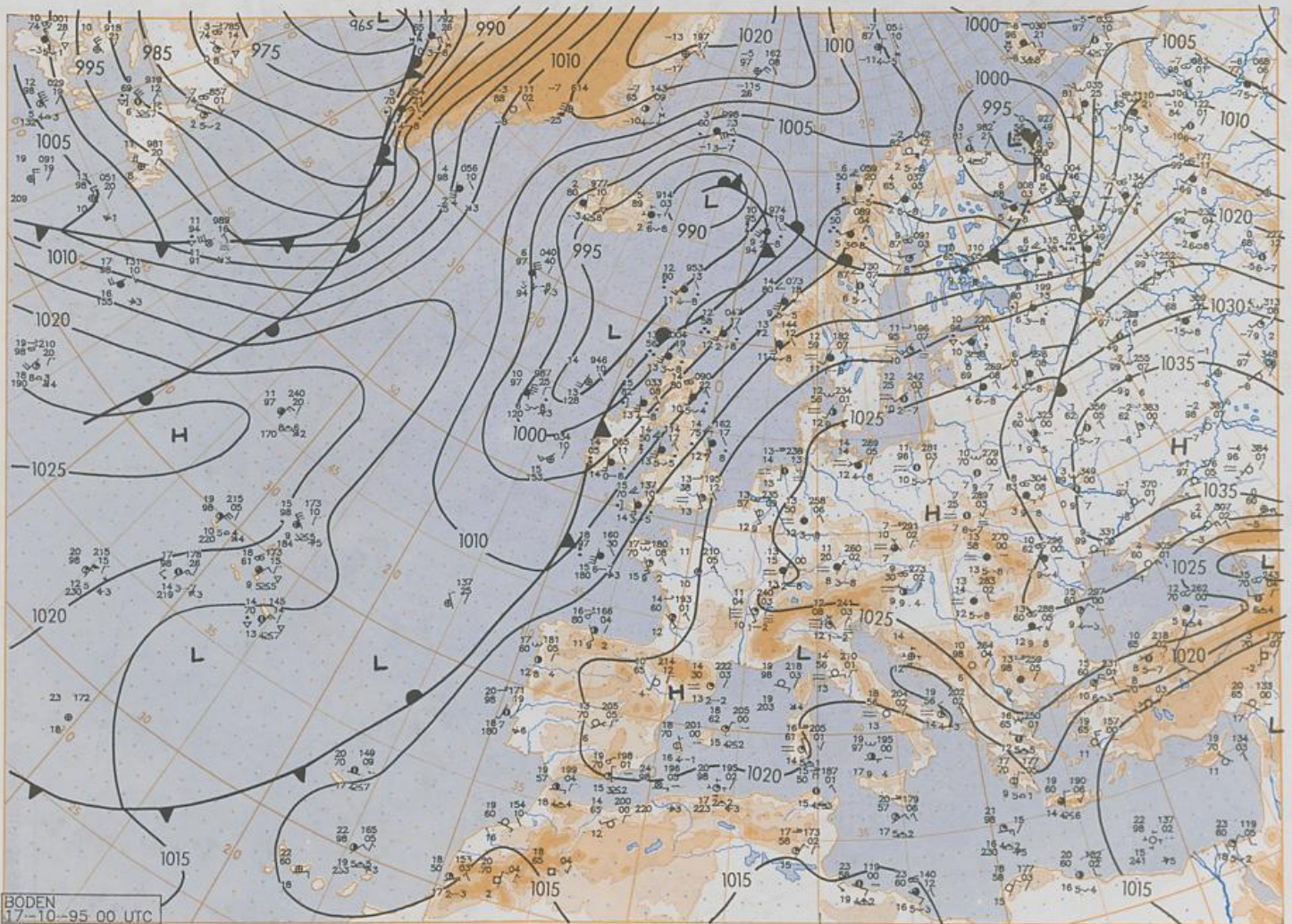
Issued daily
Yearly Price DM 456.-
plus postage
All rights reserved

Publié quotidiennement
Prix annuel DM 456.-
plus port
Reproduction interdite

Se publica diariamente
Precio de suscripción anual DM 456.-
plus porte
Se prohíbe la reproducción

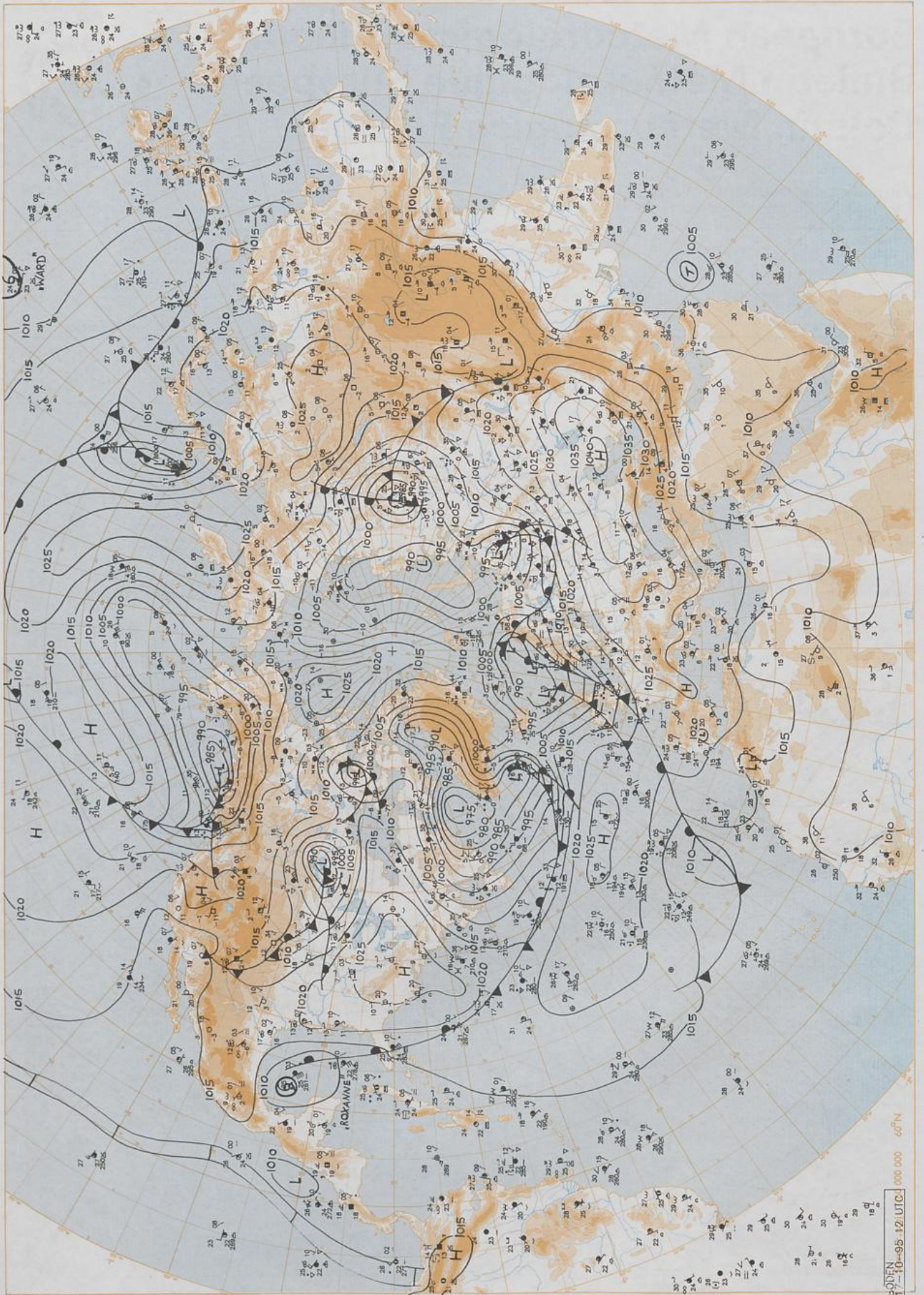
Jahrgang Volume Volume Volumen	20	Dienstag Tuesday Mardi Martes	17.10.1995	Number Number Número Número	290
---	----	--	------------	--------------------------------------	-----

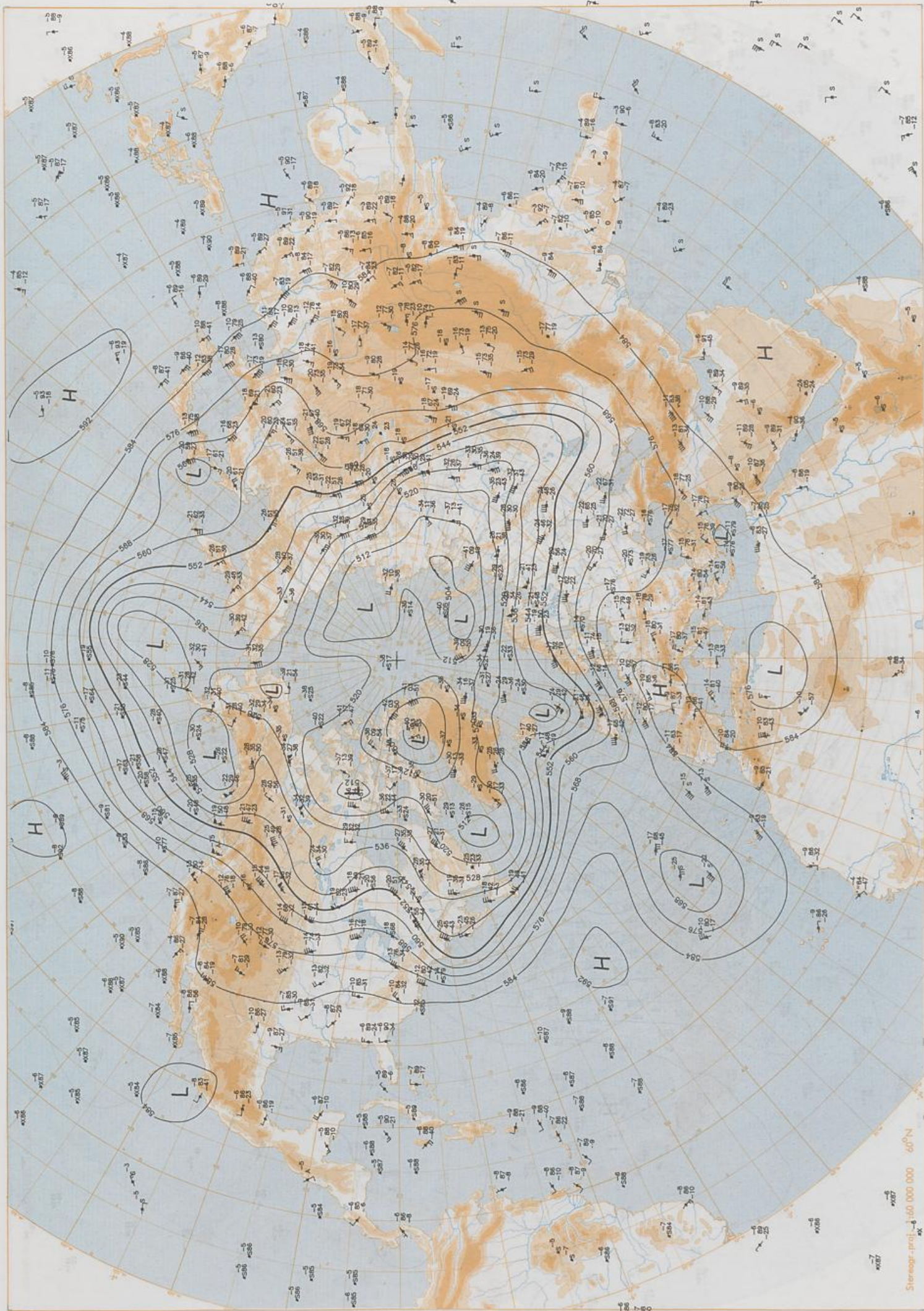
Inhalt	Contents	Contenu	Contenido
Bodenwetterkarte 00 UTC	Surface chart 00 UTC	Carte de surface 00 UTC	Análisis superficie 00 UTC
Bodenwetterkarte Nordhemisphäre 12 UTC	Surface chart northern hemisphere 12 UTC	Carte de surface sur l'hémisphère nord 12 UTC	Análisis en superficie hemisferio norte 12 UTC
500 - hPa-Fläche Nordhemisphäre 12 UTC	500 hPa surface northern hemisphere 12 UTC	Surface 500 hPa sur l'hémisphère nord 12 UTC	Topografía de la superficie de 500 hPa hemisferio norte 12 UTC
200 - hPa-Fläche Nordhemisphäre 12 UTC	200 hPa surface northern hemisphere 12 UTC	Surface 200 hPa sur l'hémisphère nord 12 UTC	Topografía de la superficie de 200 hPa hemisferio norte 12 UTC
100 - hPa-Fläche Nordhemisphäre 12 UTC	100 hPa surface northern hemisphere 12 UTC	Surface 100 hPa sur l'hémisphère nord 12 UTC	Topografía de la superficie de 100 hPa hemisferio norte 12 UTC
850 - hPa 12 UTC, 700 hPa 12 UTC	850 hPa 12 UTC, 700 hPa 12 UTC	850 hPa 12 UTC, 700 hPa 12 UTC	850 hPa 12 UTC, 700 hPa 12 UTC
Relative Topographie 500/1000 hPa 12 UTC	Thickness chart 500/1000 hPa 12 UTC	Carte d'épaisseur 500/1000 hPa 12 UTC	Relativa 500/1000 hPa 12 UTC
300 - hPa 12 UTC	300 hPa 12 UTC	300 hPa 12 UTC	300 hPa 12 UTC
Aerologische Diagramme 12 UTC	Aerological diagrams 12 UTC	Diagrammes aérologiques 12 UTC	Diagramas aerológicos 12 UTC



Stereogr. proj. 1:30 000 000 60°N

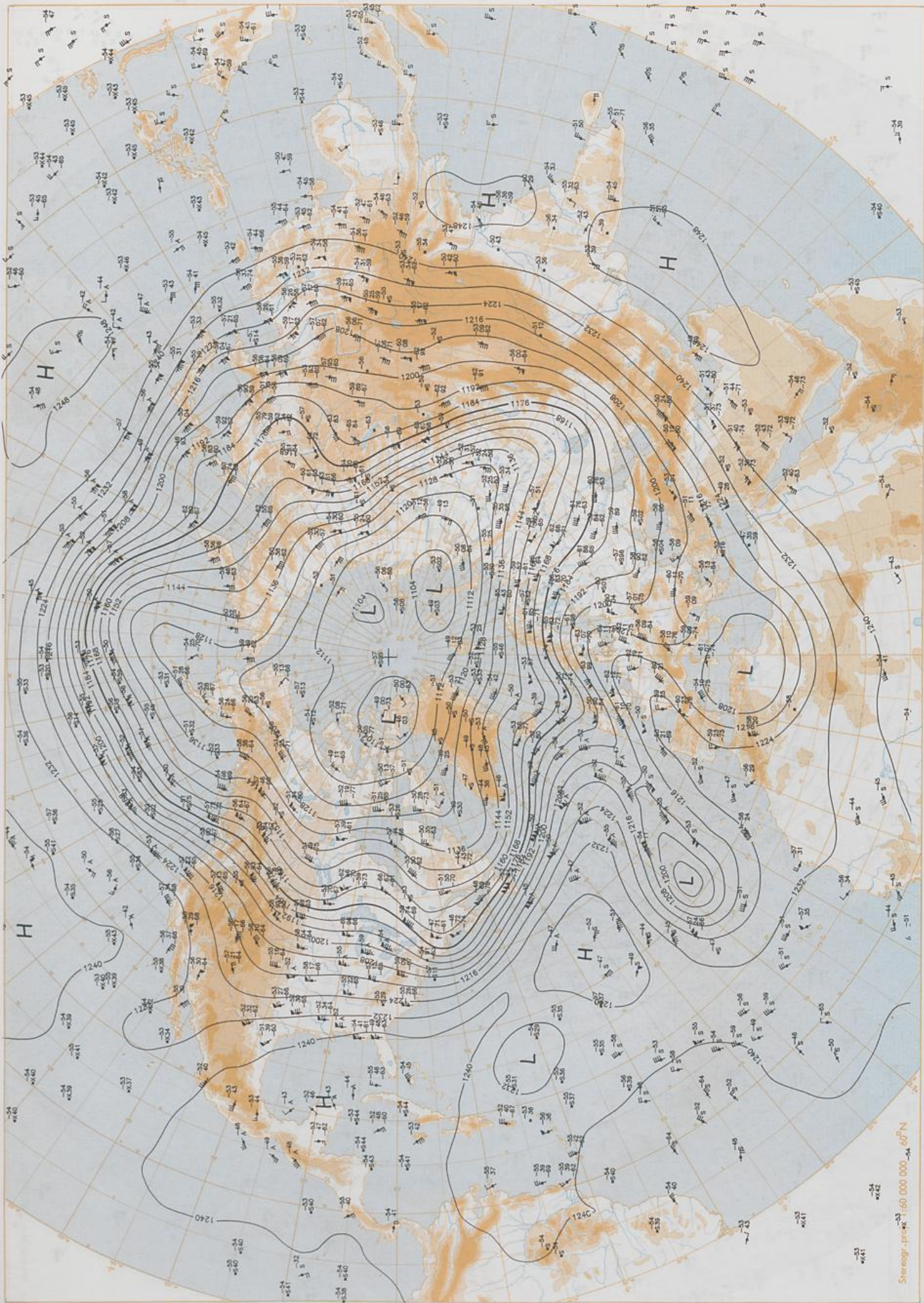
Surface chart 00 UTC





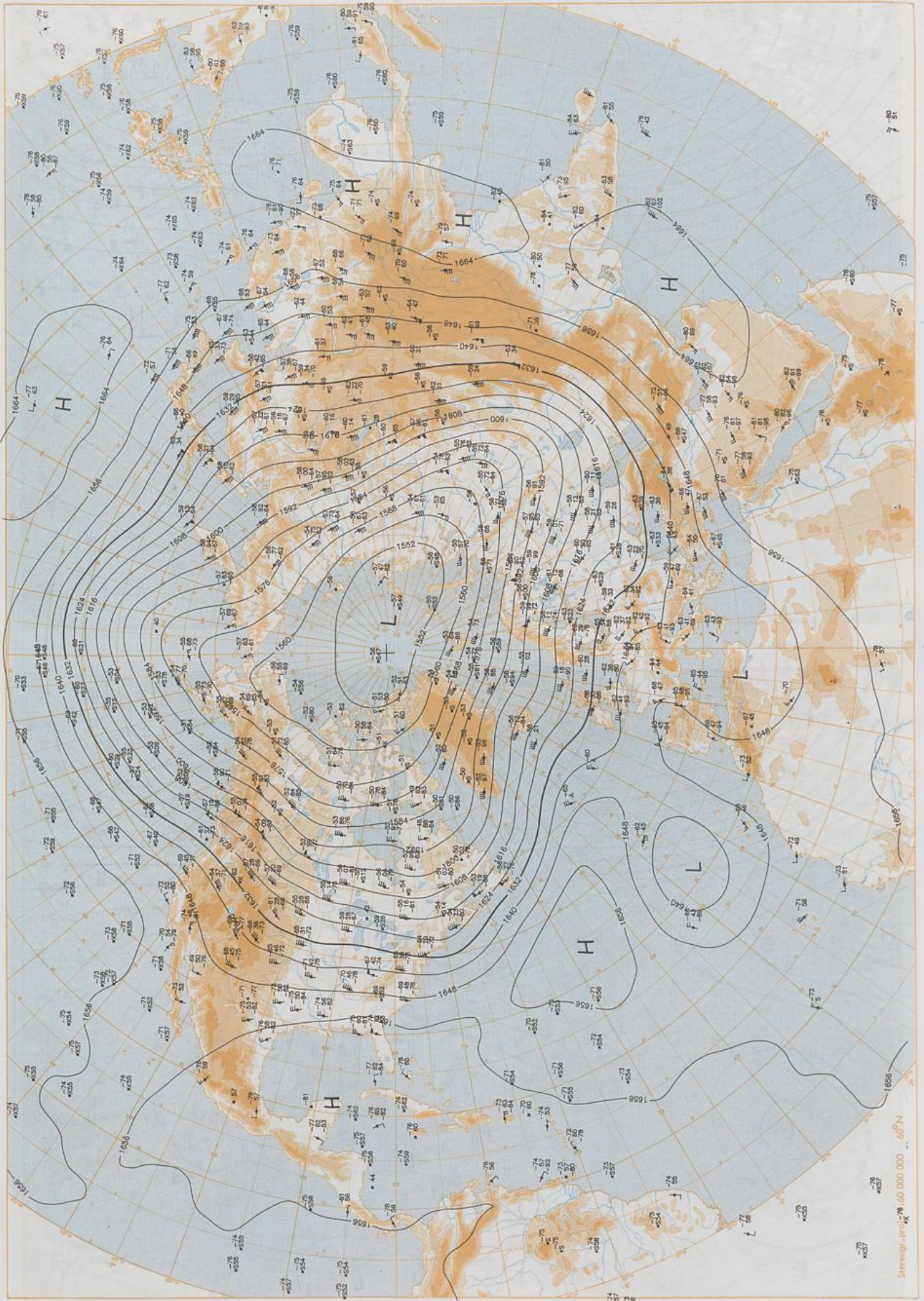
500 hPa 12 UTC

Stereogr. proj. 1:60 000 000 60°N



200 hPa 12 UTC

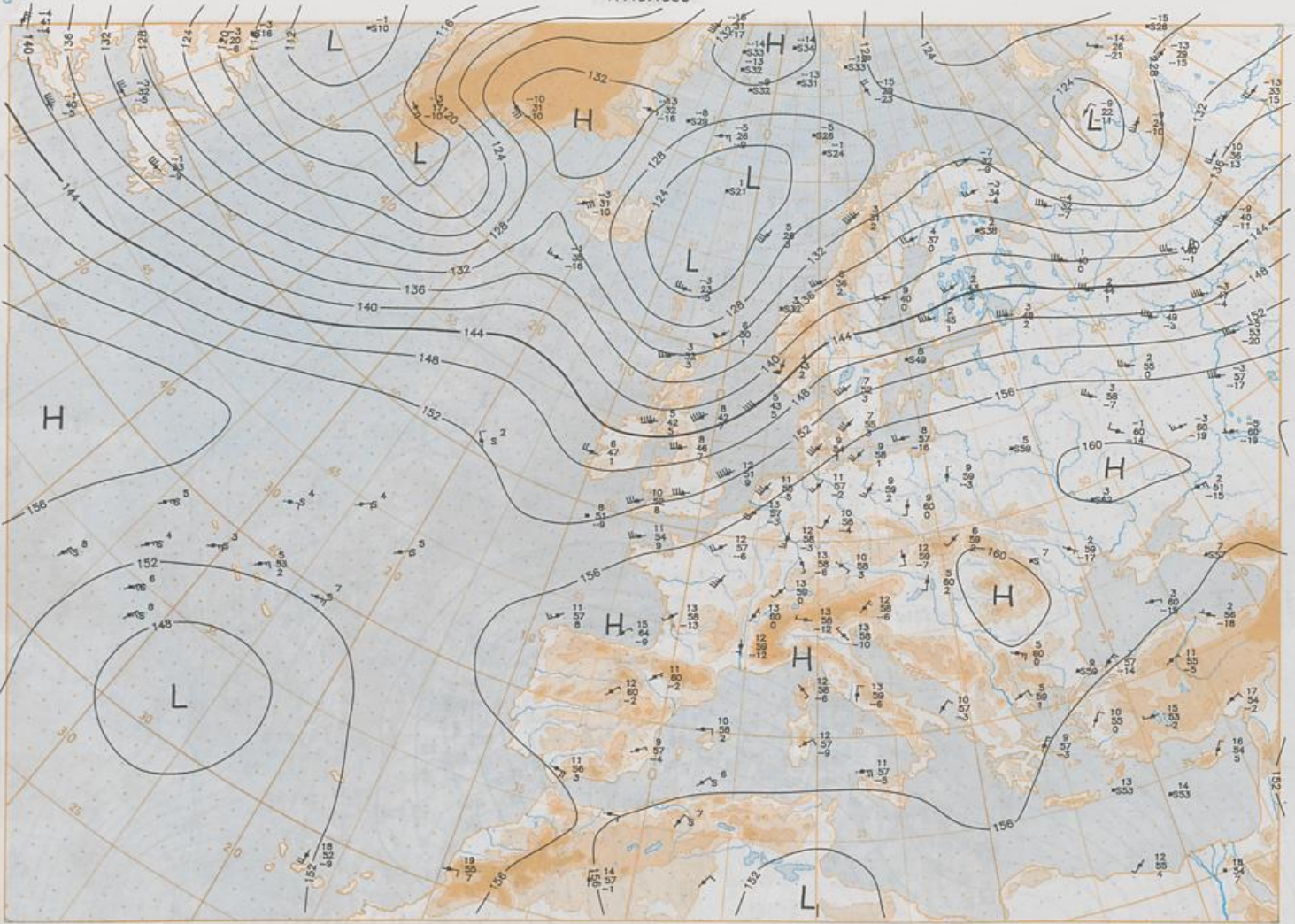
Scale: 1:60 000 000 N



100 hPa 12 UTC

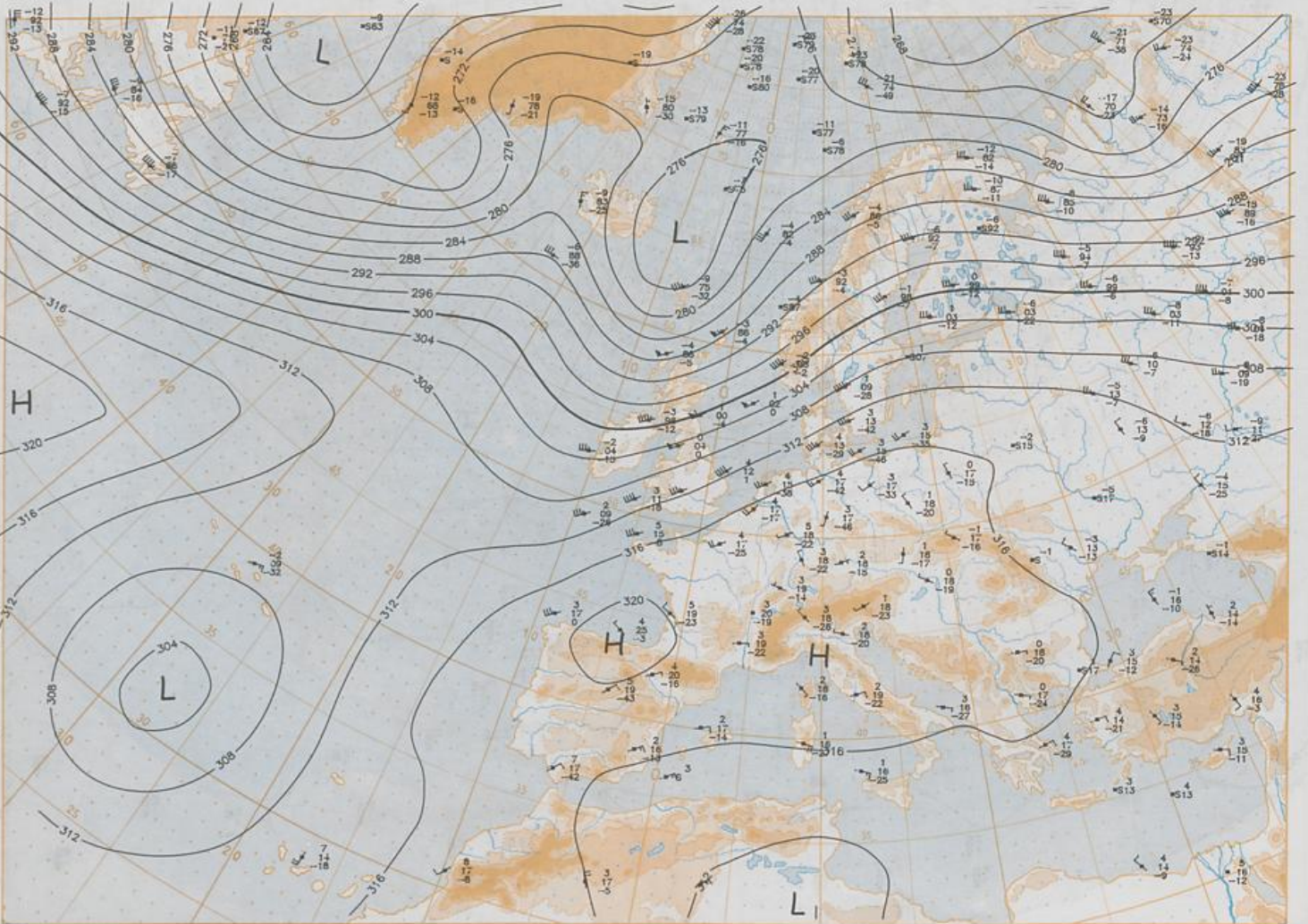
Stereogr-proj: WGS 80 000 000 ... 60°N

17.10.1995

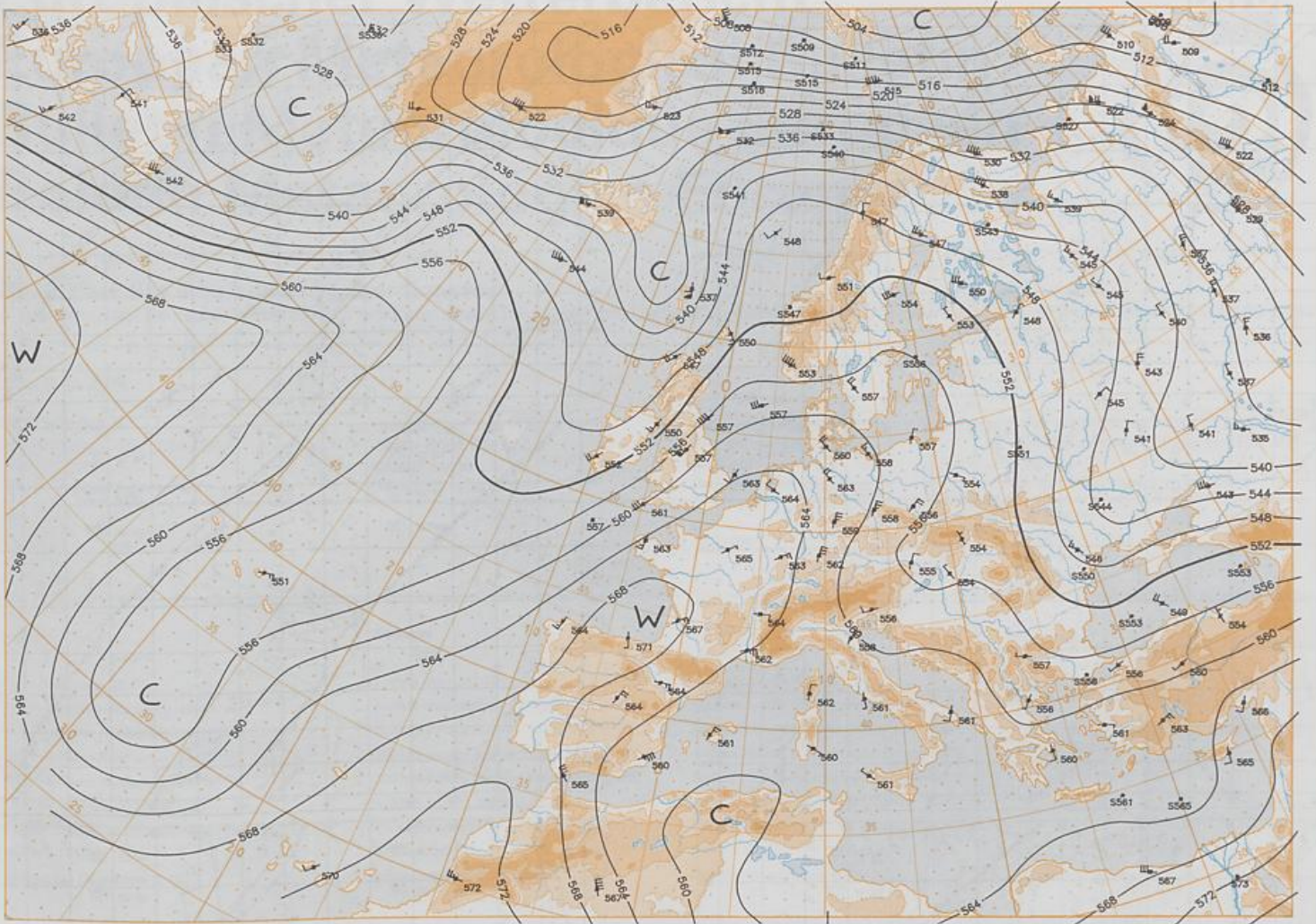


Stereogr. prof. 1:30 000 000 in 60°N

850 hPa 12 UTC

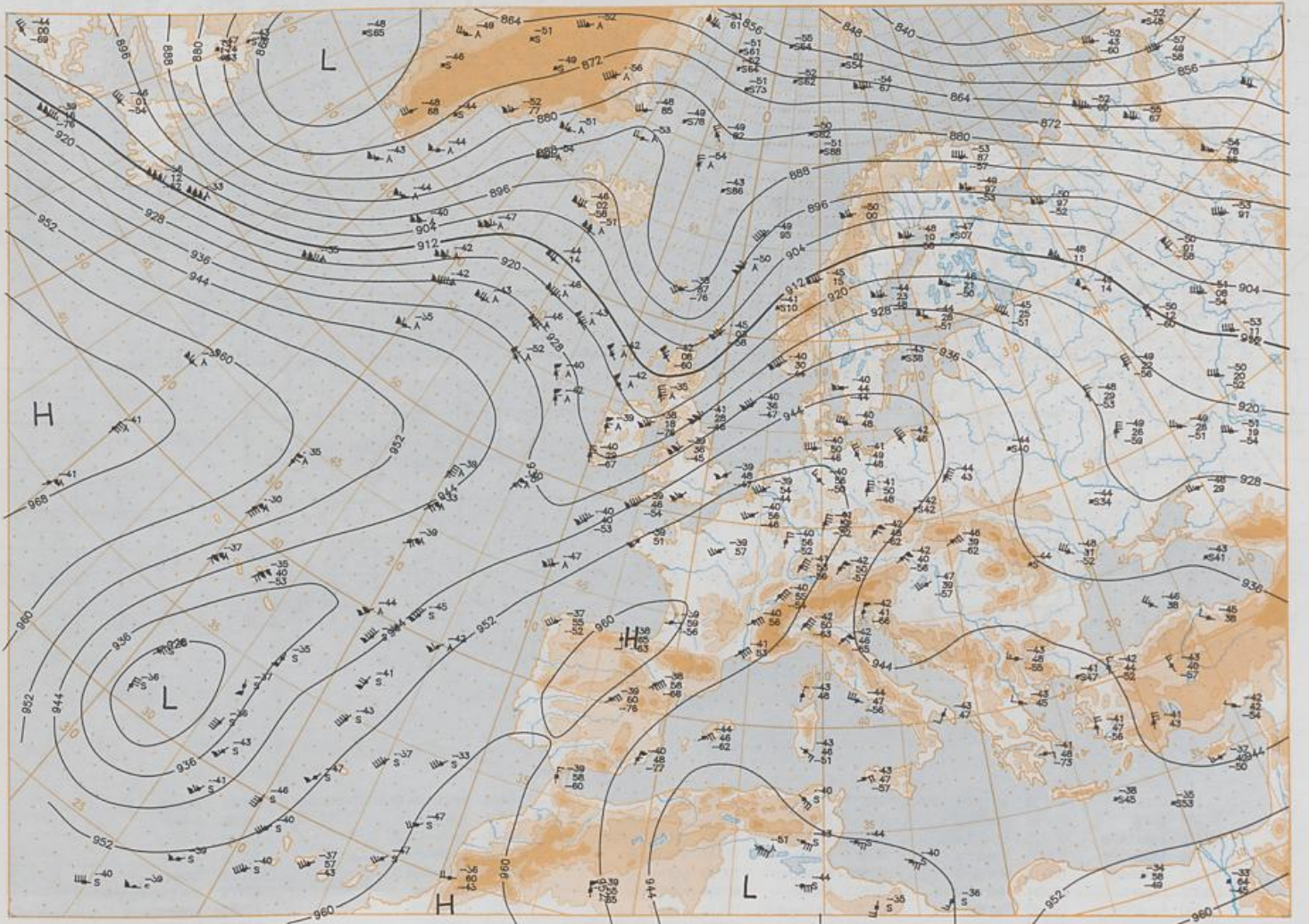


700 hPa 12 UTC

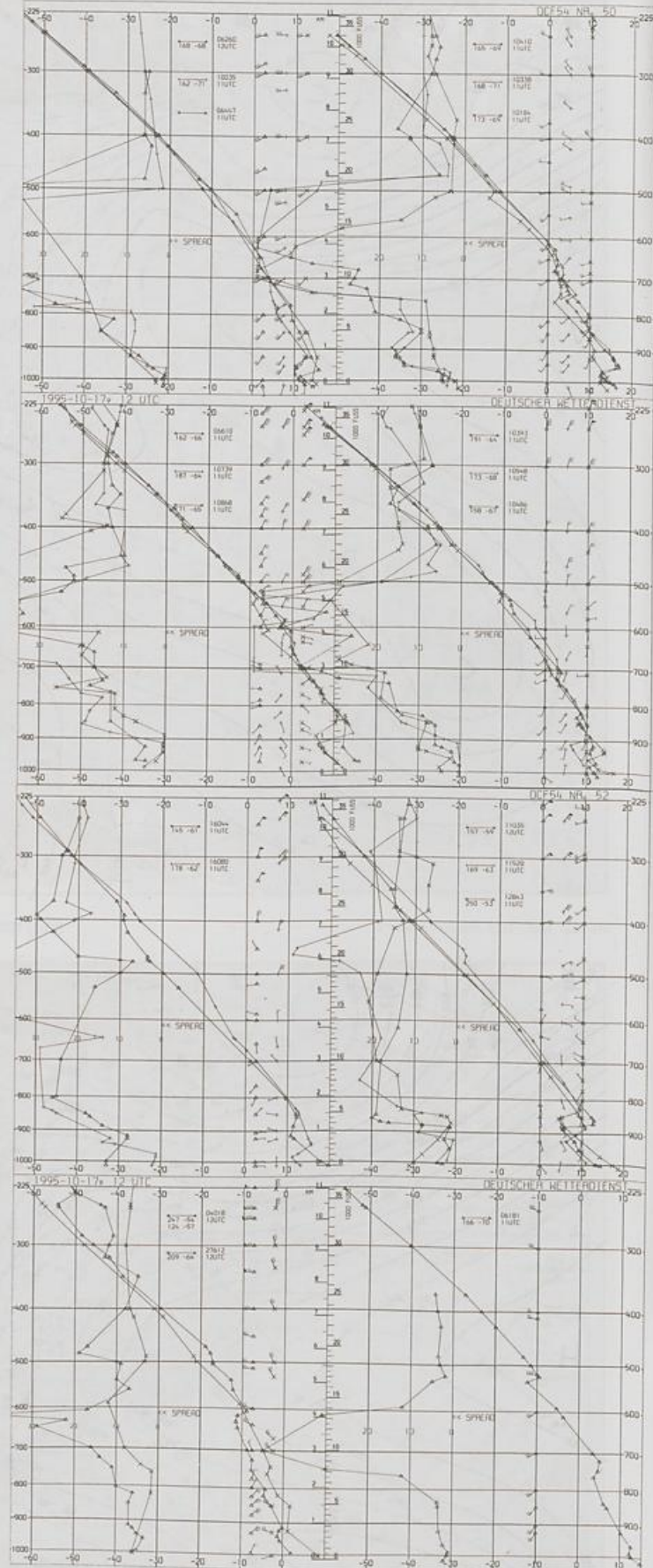
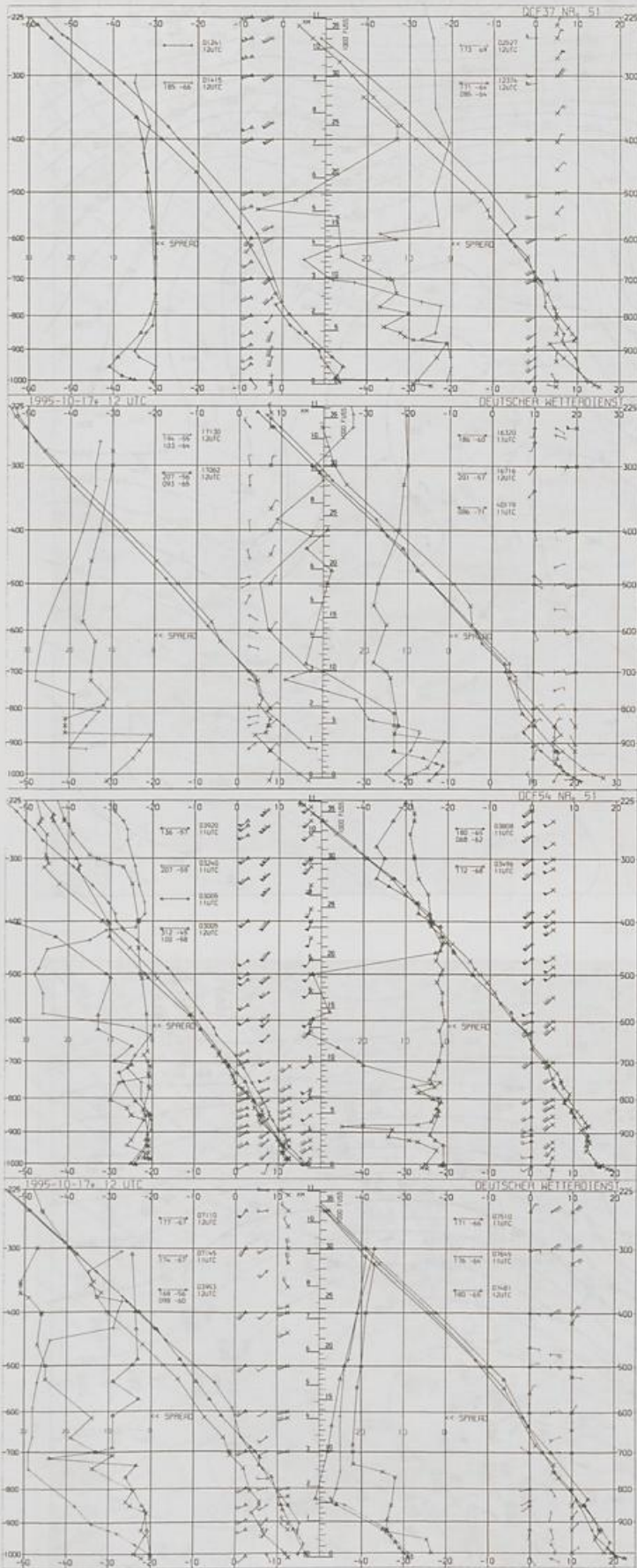


Stereogr. proj. 1:30 000 000 in 20°N

500/1000 hPa 12 UTC



300 hPa 12 UTC



Aerological Diagrams 12 UTC

- | | | | | | |
|-----------------|-------------------|-----------------|-------------------------|-------------------------------|------------------------|
| 01241 Orland | 03882 Herstmoexux | 06610 Payeme | 10184 Greifswald | 10888 München-Oberschleißheim | 16080 Milano |
| 01384 Oslo | 03808 Camborne | 07710 Brest | 10393 Lindenberg | 11035 Wien | 16245 Roma |
| 01415 Stavanger | 03920 Long Kesh | 07145 Trappes | 10486 Dresden-Wahnsdorf | 11520 Praha-Libus | 16320 Brindisi |
| 02465 Stockholm | 03953 Valencia | 07481 Lyon | 10548 Meiningen | 12374 Legionowo | 16716 Athen |
| 02527 Goteborg | 04018 Keflavik | 07510 Bordeaux | 10035 Schleswig | 12843 Budapest | 17062 Istanbul |
| 03005 Lerwick | 06181 Kobenhavn | 07645 Nimes | 10338 Hannover | 13275 Beograd | 40179 Bet Dagan/Israel |
| 03240 Boulmer | 06260 De Billt | 08001 La Conuna | 10410 Essen | 15420 Bukarest | 17130 Ankara |
| 03496 Hemsby | 06447 Uccle | 08579 Lisboa | 10739 Stuttgart | 16044 Udine | 27612 Moskava |