

Europäischer Wetterbericht European Meteorological Bulletin Bulletin Météorologique Européen Boletín Meteorológico Europeo

Amtsblatt des Deutschen Wetterdienstes

Druck und Verlag: Deutscher Wetterdienst - Zentralamt- Frankfurter Str. 135, 63067 Offenbach a.M., Postfach 100465, 63004 Offenbach a.M. Tel.: (069) 8062-2284

Erscheint täglich
Bezugspreis jährlich DM 420,-
zuzügl. Porto
Nachdruck: nicht gestattet

Issued daily
Yearly price DM 420,-
plus postage
All rights reserved

Publié quotidiennement
Prix annuel DM 420,-
plus port
Reproduction interdite

Se publica diariamente
Precio de suscripción anual DM 420,-
plus porte
Se prohíbe la reproducción

Jahrgang
Volume
Volume
Volumen

20

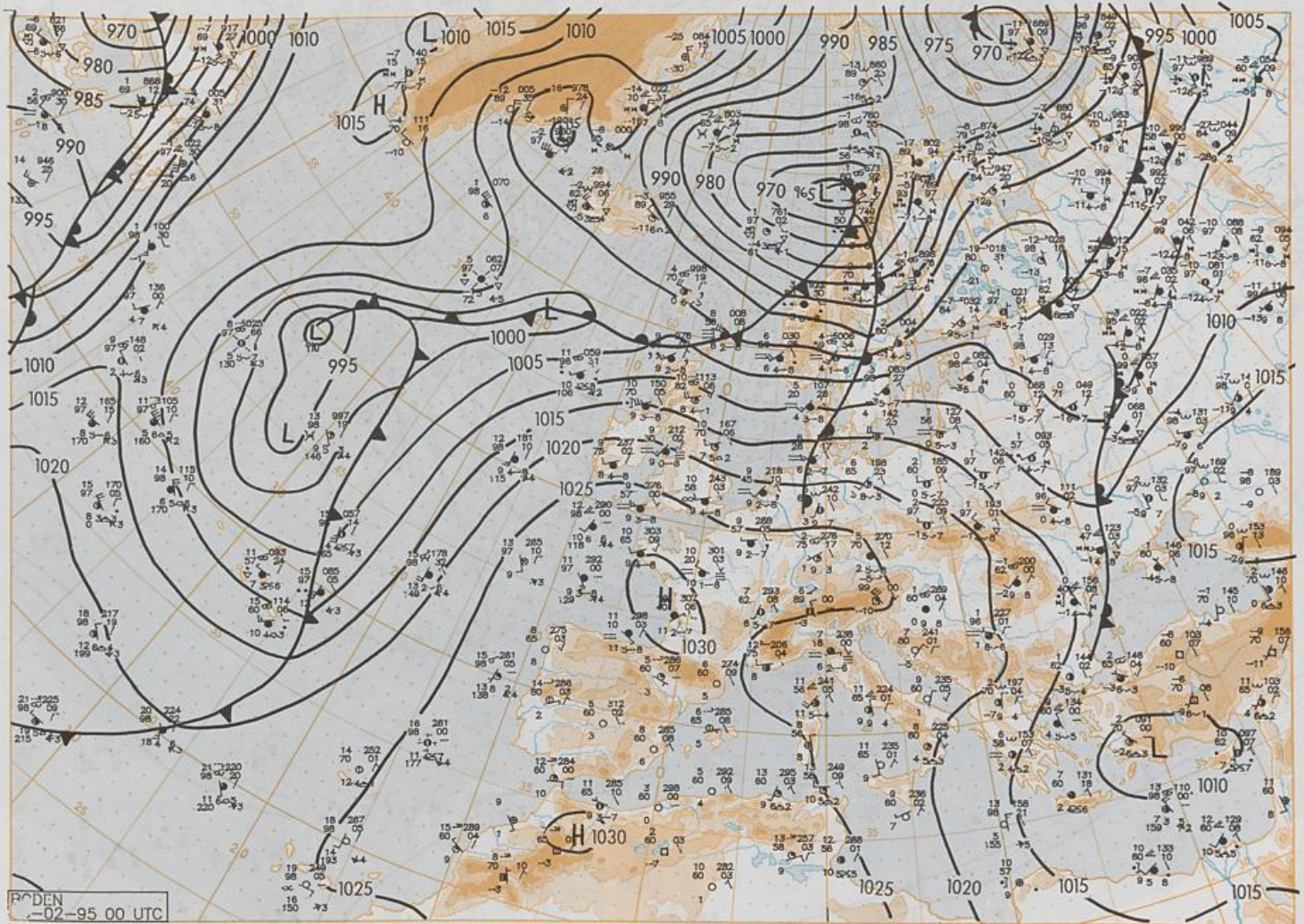
Montag
Monday
Lundi
Lunes

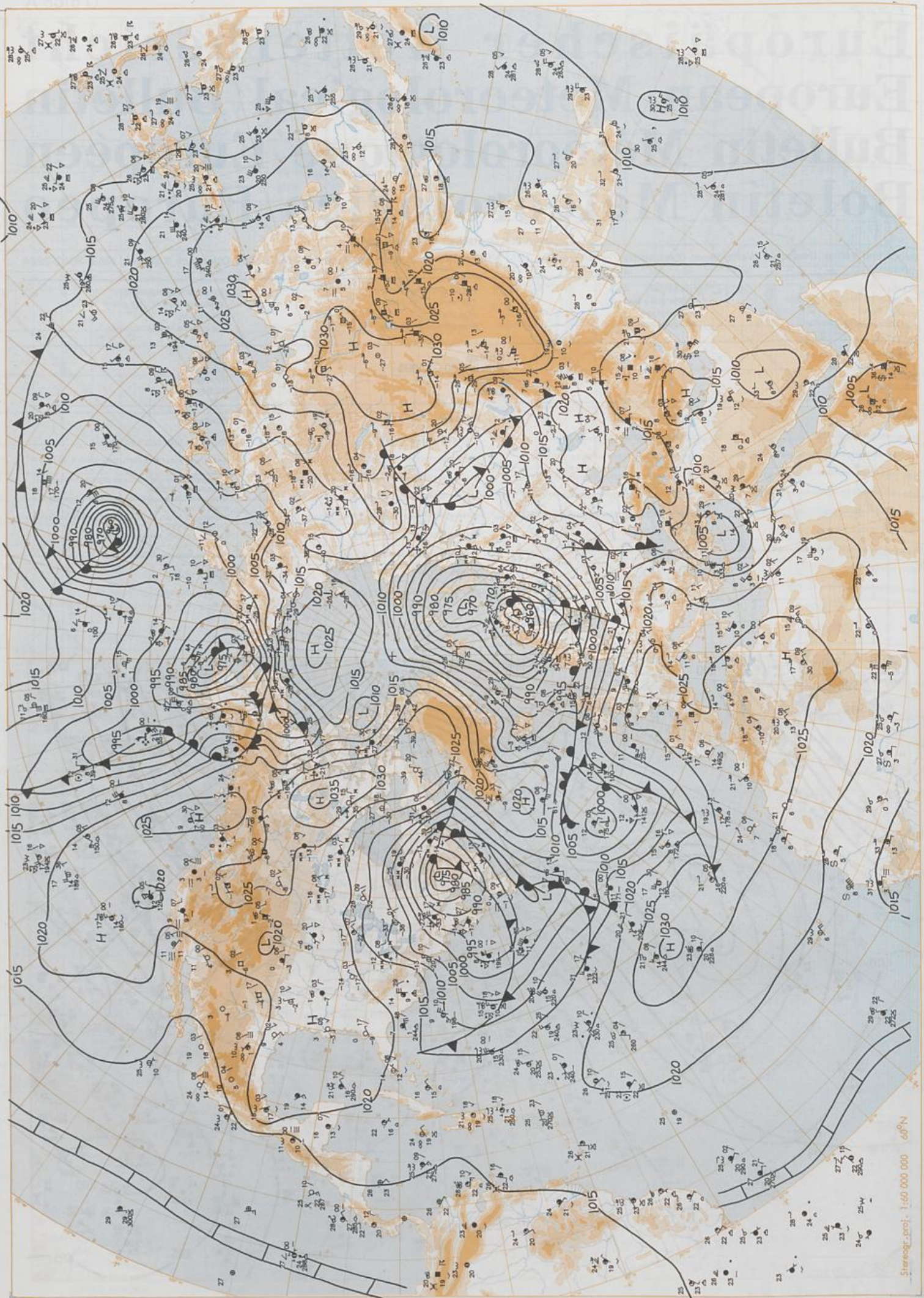
06.02.1995

Nummer
Number
Número
Número

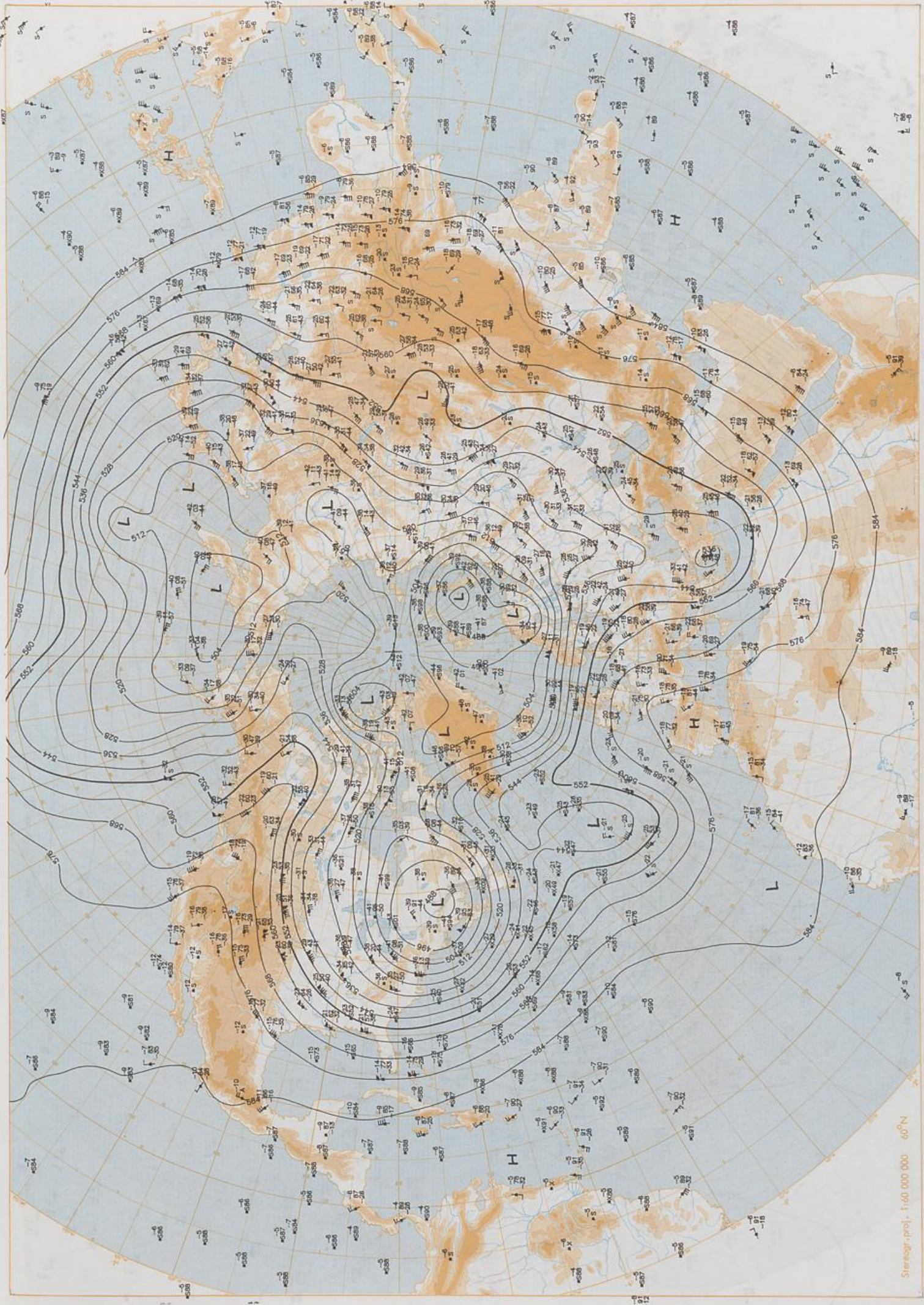
37

Inhalt	Content	Contenu	Contenido
Bodenwetterkarte 00 UTC	Surface chart 00 UTC	Carte de surface à 00 UTC	Análisis en superficie a las 00 UTC
Bodenwetterkarte Nordhemisphäre 12 UTC	Surface chart northern hemisphere 12 UTC	Carte de surface sur l'hémisphère nord à 12 UTC	Análisis en superficie hemisferio norte a las 12 UTC
500-hPa-Fläche Nordhemisphäre 12 UTC	500 hPa surface northern hemisphere 12 UTC	Surface 500 hPa sur l'hémisphère nord à 12 UTC	Topografía de la superficie de 500 hPa hemisferio norte de las 12 UTC
200-hPa-Fläche Nordhemisphäre 12 UTC	200 hPa surface northern hemisphere 12 UTC	Surface 200 hPa sur l'hémisphère nord à 12 UTC	Topografía de la superficie de 200 hPa hemisferio norte de las 12 UTC
100-hPa-Fläche Nordhemisphäre 12 UTC	100 hPa surface northern hemisphere 12 UTC	Surface 100 hPa sur l'hémisphère nord à 12 UTC	Topografía de la superficie de 100 hPa hemisferio norte de las 12 UTC
850-hPa 12 UTC, 700 hPa 12 UTC	850 hPa 12 UTC, 700 hPa 12 UTC	850 hPa 12 UTC, 700 hPa 12 UTC	850 hPa 12 UTC, 700 hPa 12 UTC
Relative Topographie 500/1000 hPa 12 UTC	Thickness chart 500/1000 hPa 12 UTC	Carte d'épaisseur 500/1000 hPa 12 UTC	Relativa 500/1000 hPa 12 UTC
300-hPa 12 UTC	300 hPa 12 UTC	300 hPa 12 UTC	300 hPa 12 UTC
Aerologische Diagramme 12 UTC	Aerological diagrams 12 UTC	Diagrammes aérologiques 12 UTC	Diagramas aerológicos 12 UTC



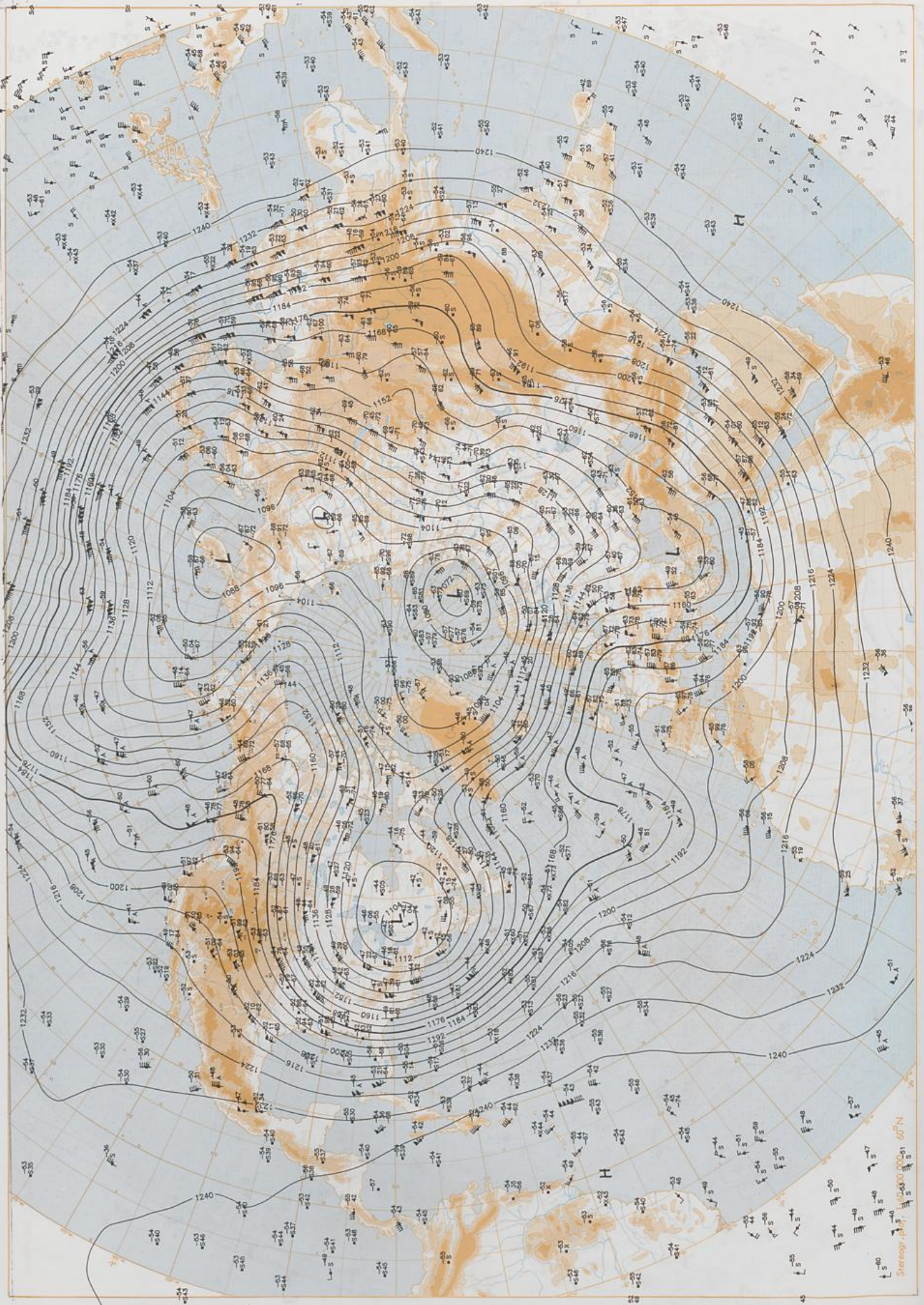


Stereogr. proj. 1:60 000 000 60°N

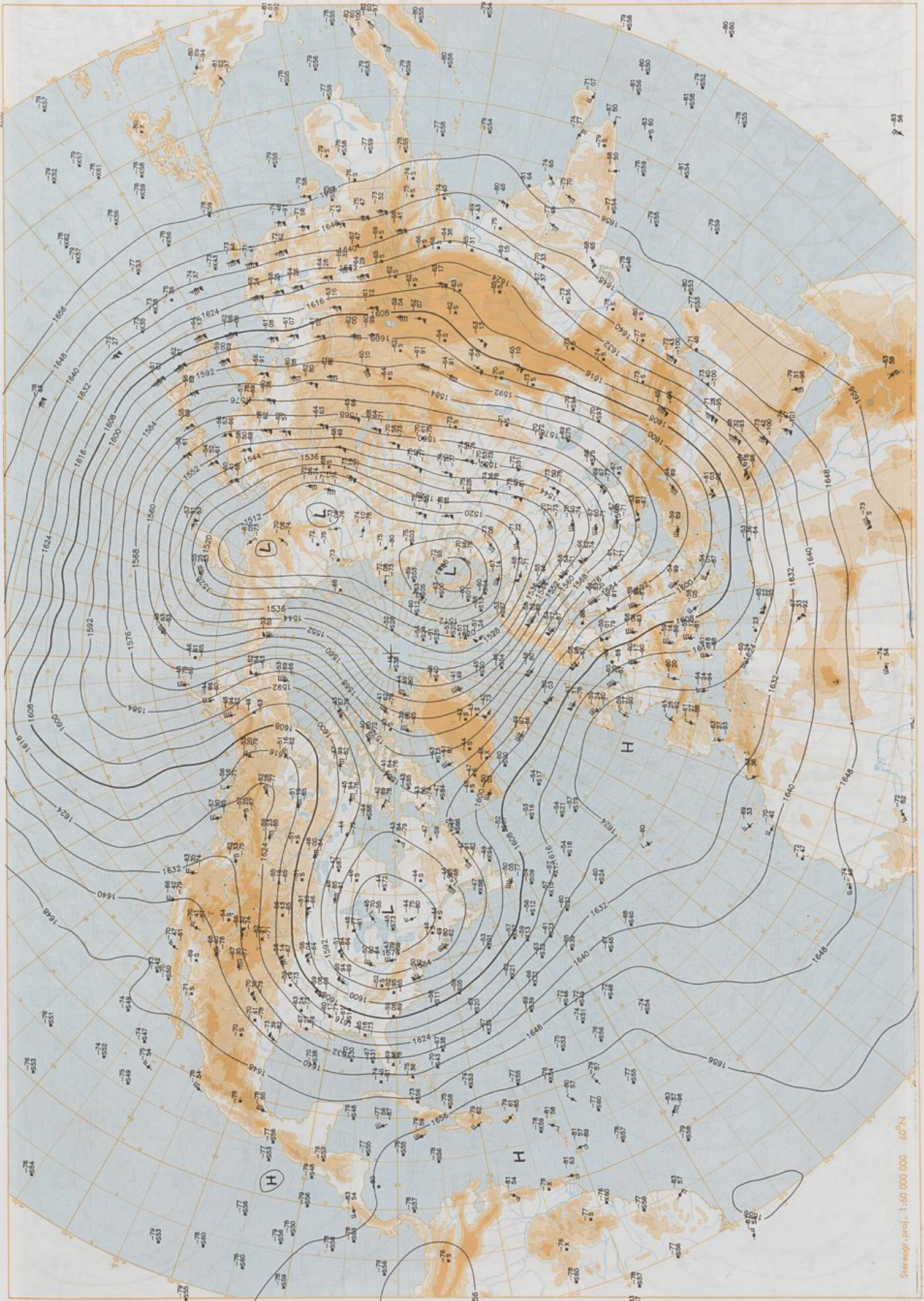


500 hPa 12 UTC

Stereogr. proj. 1:60 000 000 60°N



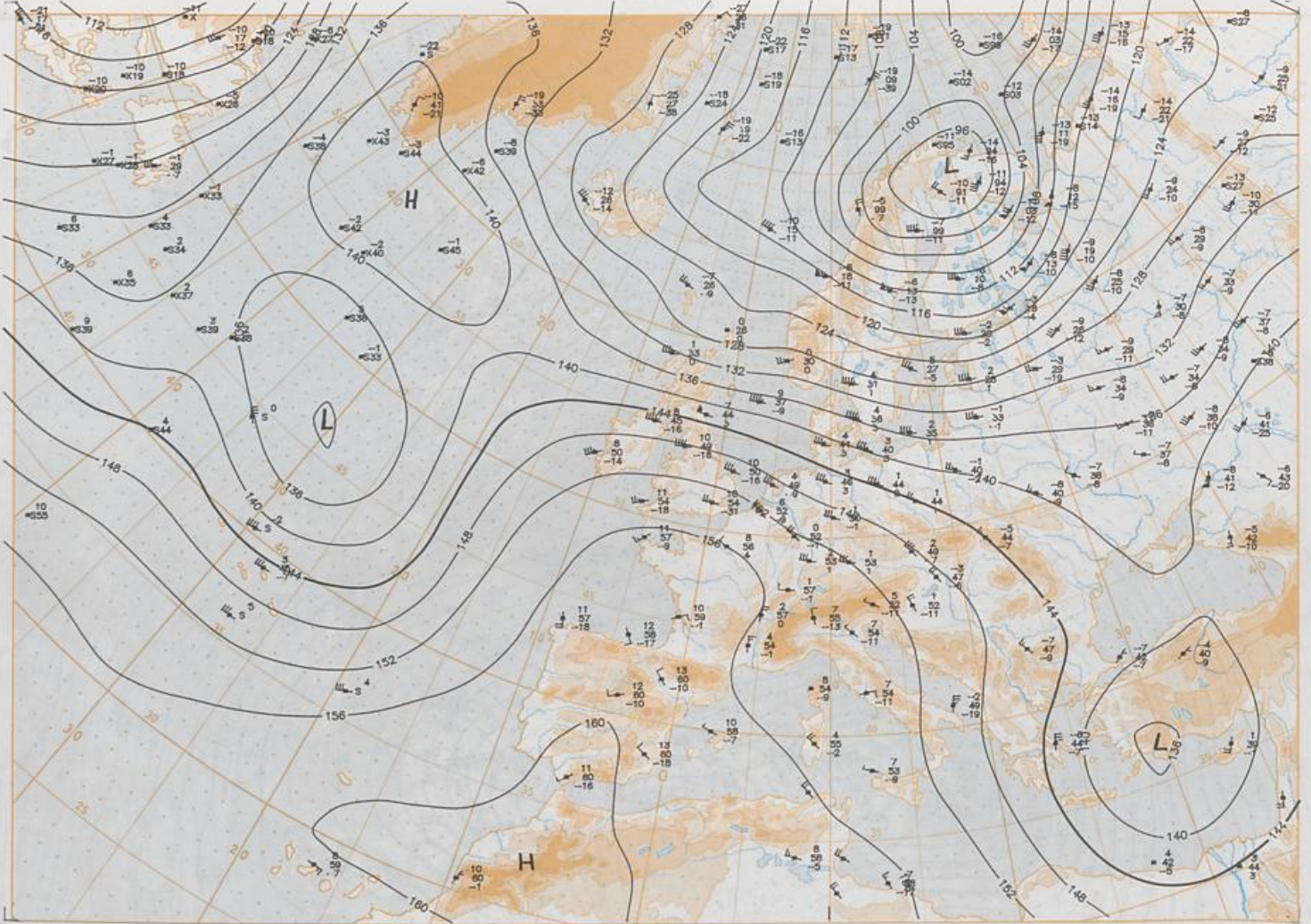
Stereographic projection, 60°N



100 hPa 12 UTC

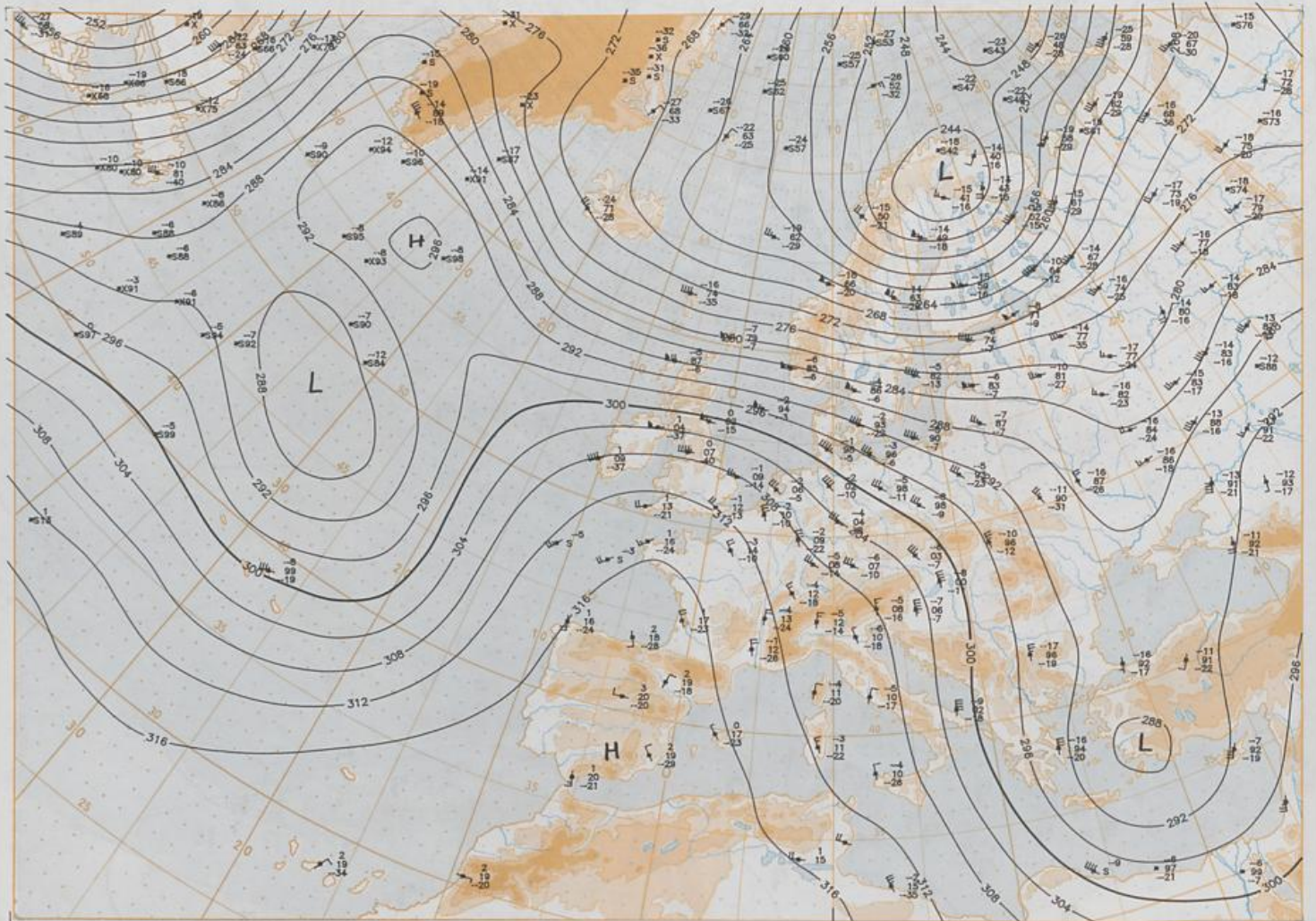
Stereogr. proj. 1:60 000 000 60°N

06.02.1995

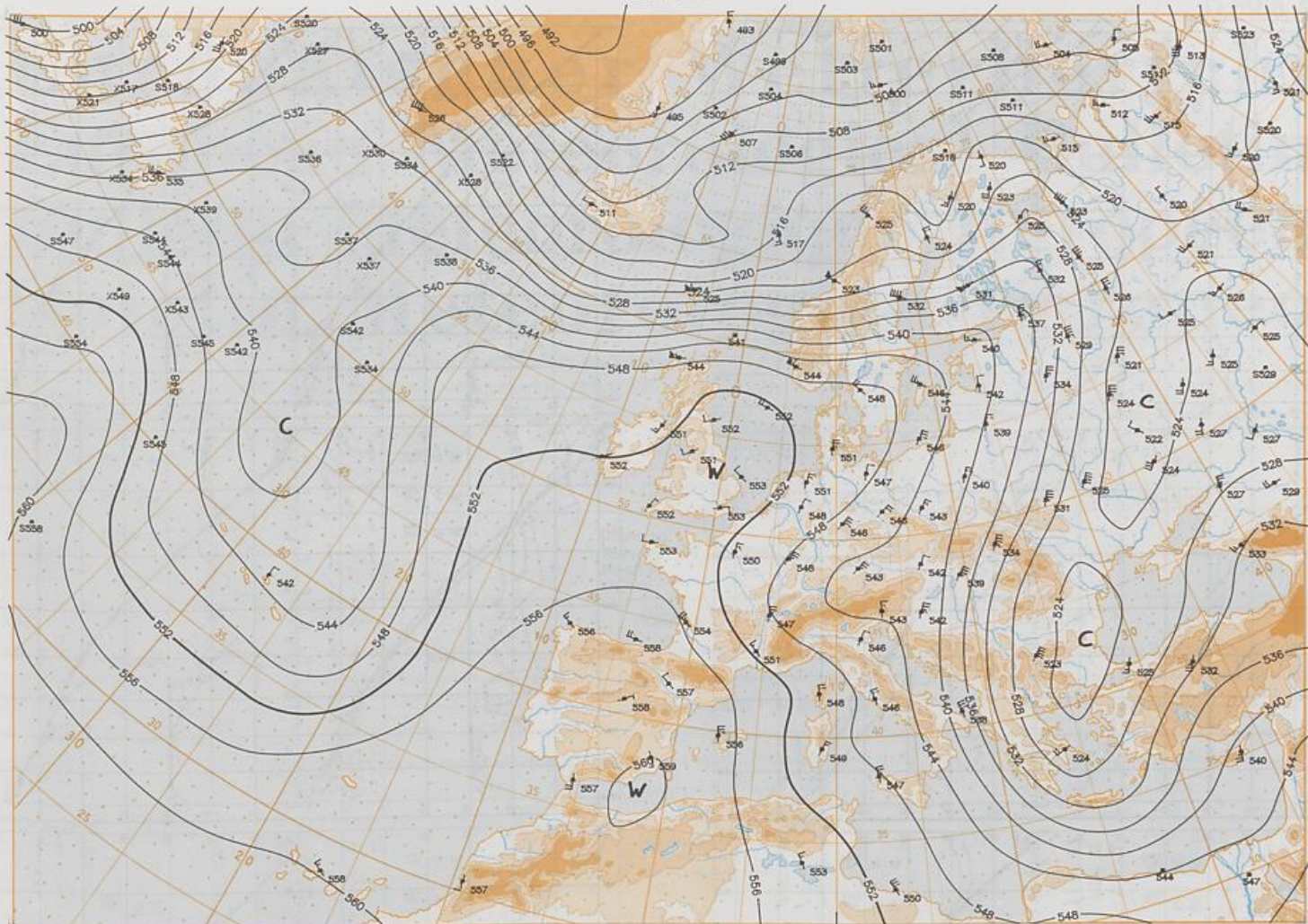


Stejnogr. proj. 1:30 000 000 in 60°N

850 hPa 12 UTC

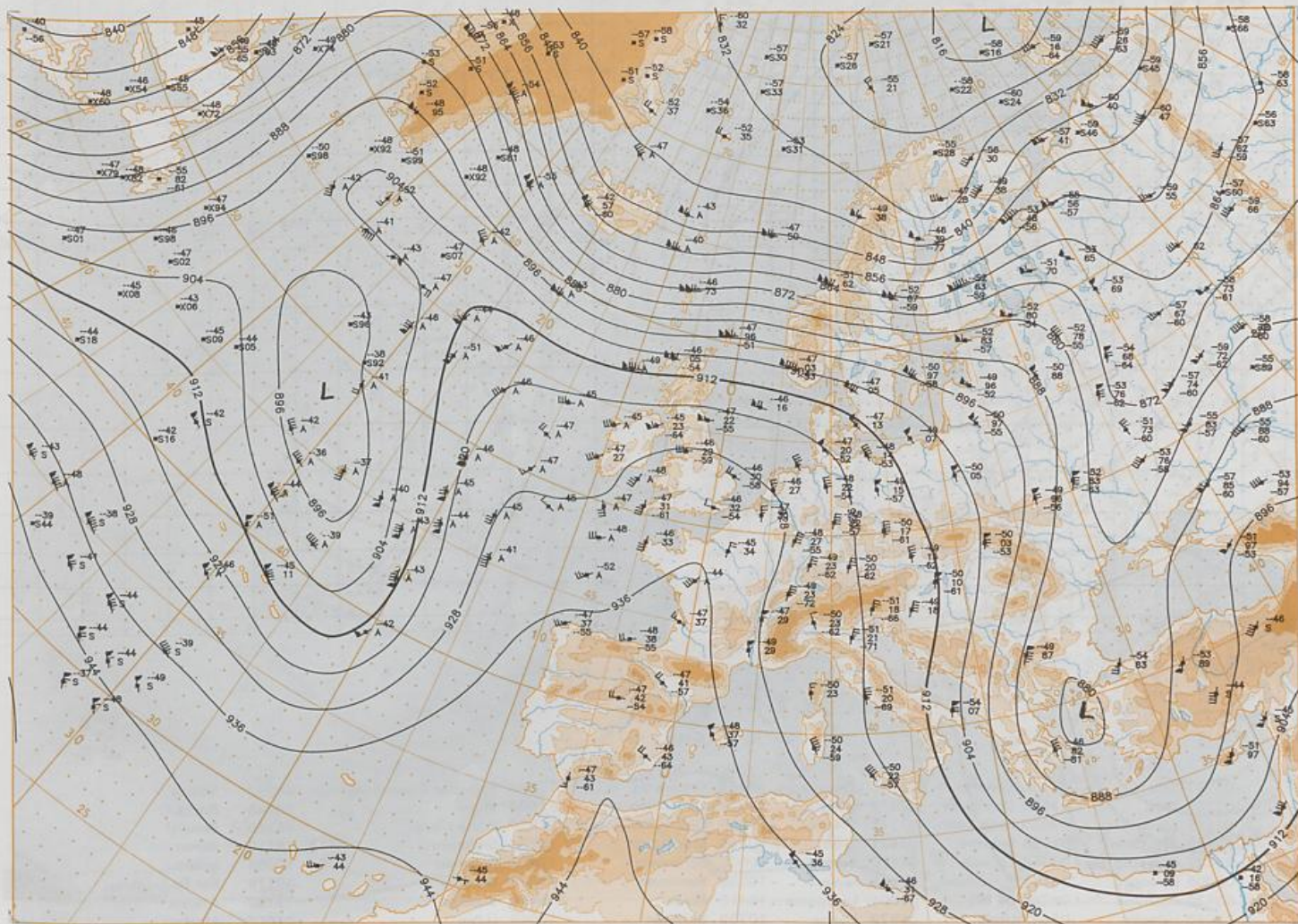


700 hPa 12 UTC

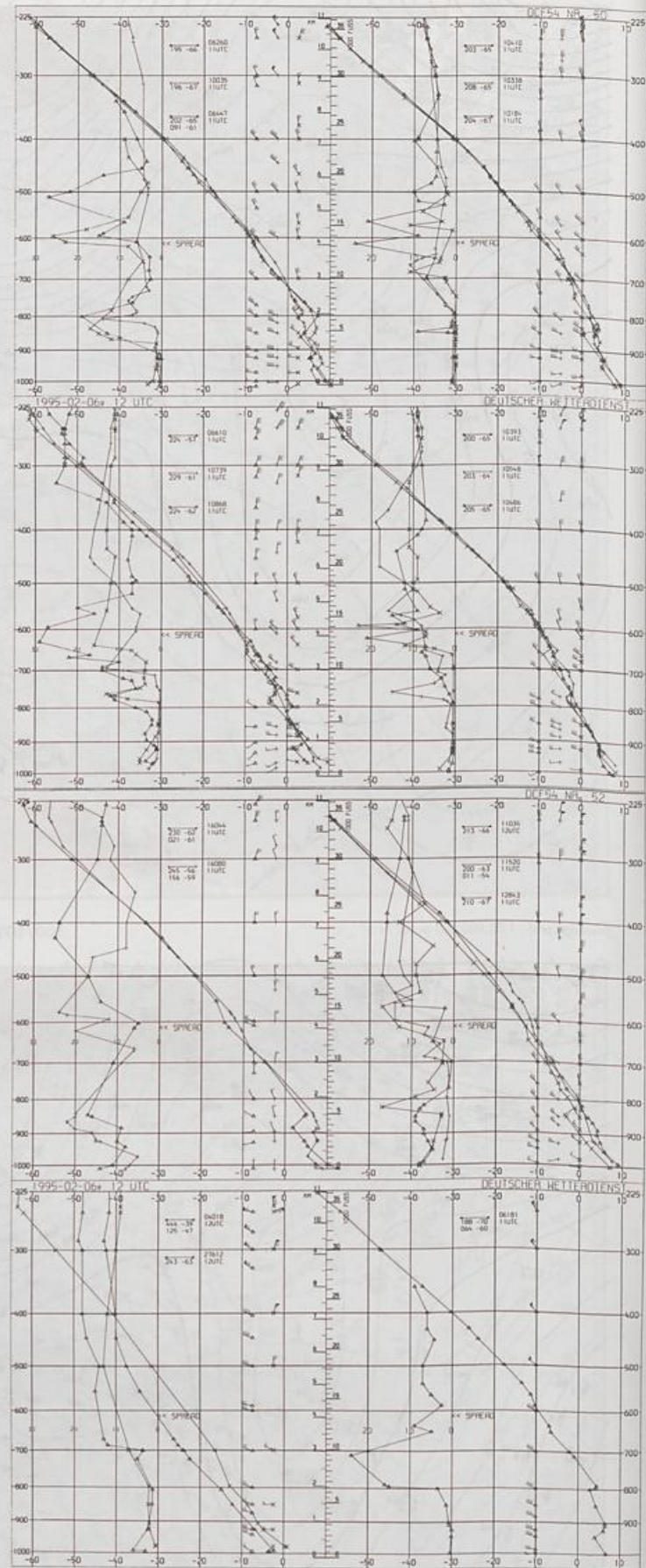
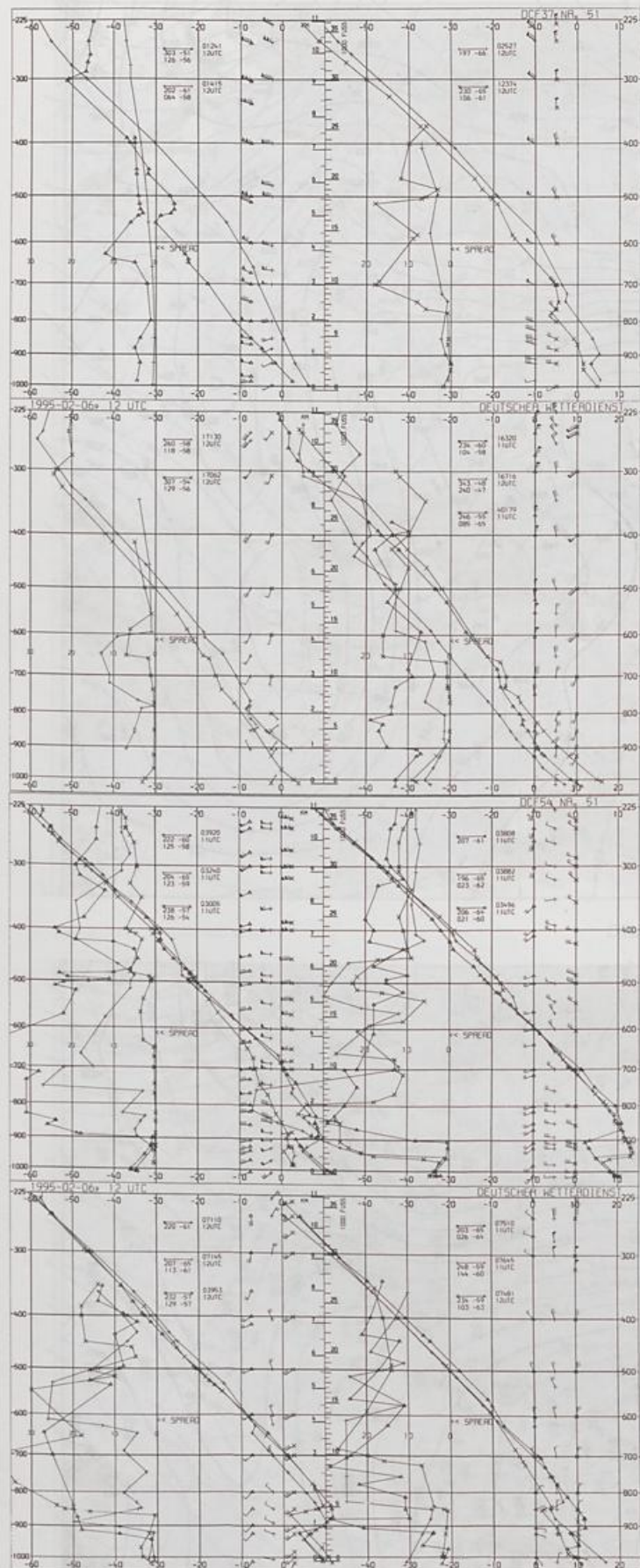


500/1000 hPa 12 UTC

Stereogr. proj. 1:30 000 000 in 60°N



300 hPa 12 UTC



Aerological
Diagrams
12 UTC

- | | | | | | |
|-----------------|-----------------|-----------------|-------------------------|-------------------------------|------------------------|
| 01241 Orland | 03774 Crawley | 06610 Payerne | 10184 Greifswald | 10868 München-Oberschleißheim | 16080 Milano |
| 01384 Oslo | 03808 Camborne | 07110 Brest | 10393 Lindenberg | 11035 Wien | 16245 Roma |
| 01415 Stavanger | 03920 Long Kesh | 07145 Trappes | 10486 Dresden-Wahnsdorf | 11520 Praha-Libus | 16320 Brindisi |
| 02465 Stockholm | 03953 Valencia | 07481 Lyon | 10548 Meiningen | 12374 Legionowo | 16716 Athen |
| 02527 Göteborg | 04018 Keflavik | 07510 Bordeaux | 10035 Schleswig | 12843 Budapest | 17062 Istanbul |
| 03005 Lerwick | 06181 Kobenhavn | 07845 Nîmes | 10338 Hannover | 13275 Beograd | 40179 Bet Dagan/Israel |
| 03170 Shanwell | 06260 Da Bitt | 08001 La Coruna | 10410 Essen | 15420 Bukarest | 17130 Ankara |
| 03495 Hemsby | 08447 Uccle | 08579 Lisboa | 10739 Stuttgart | 16044 Udina | 27612 Moskva |