

Europäischer Wetterbericht European Meteorological Bulletin Bulletin Météorologique Européen Boletín Meteorológico Europeo



Amtsblatt des Deutschen Wetterdienstes

Druck und Verlag: Deutscher Wetterdienst, Frankfurter Straße 135, 63067 Offenbach · Postanschrift: 63004 Offenbach, Postfach 100465, Telefon: (0 69) 80 62-22 84

D 6168 A
ISSN 0341-2970

Erscheint täglich ·
Bezugspreis jährlich DM 456.-
zuzügl. Porto
Nachdruck nicht gestattet

Issued daily
Yearly Price DM 456.-
plus postage
All rights reserved

Publié quotidiennement
Prix annuel DM 456.-
plus port
Reproduction interdite

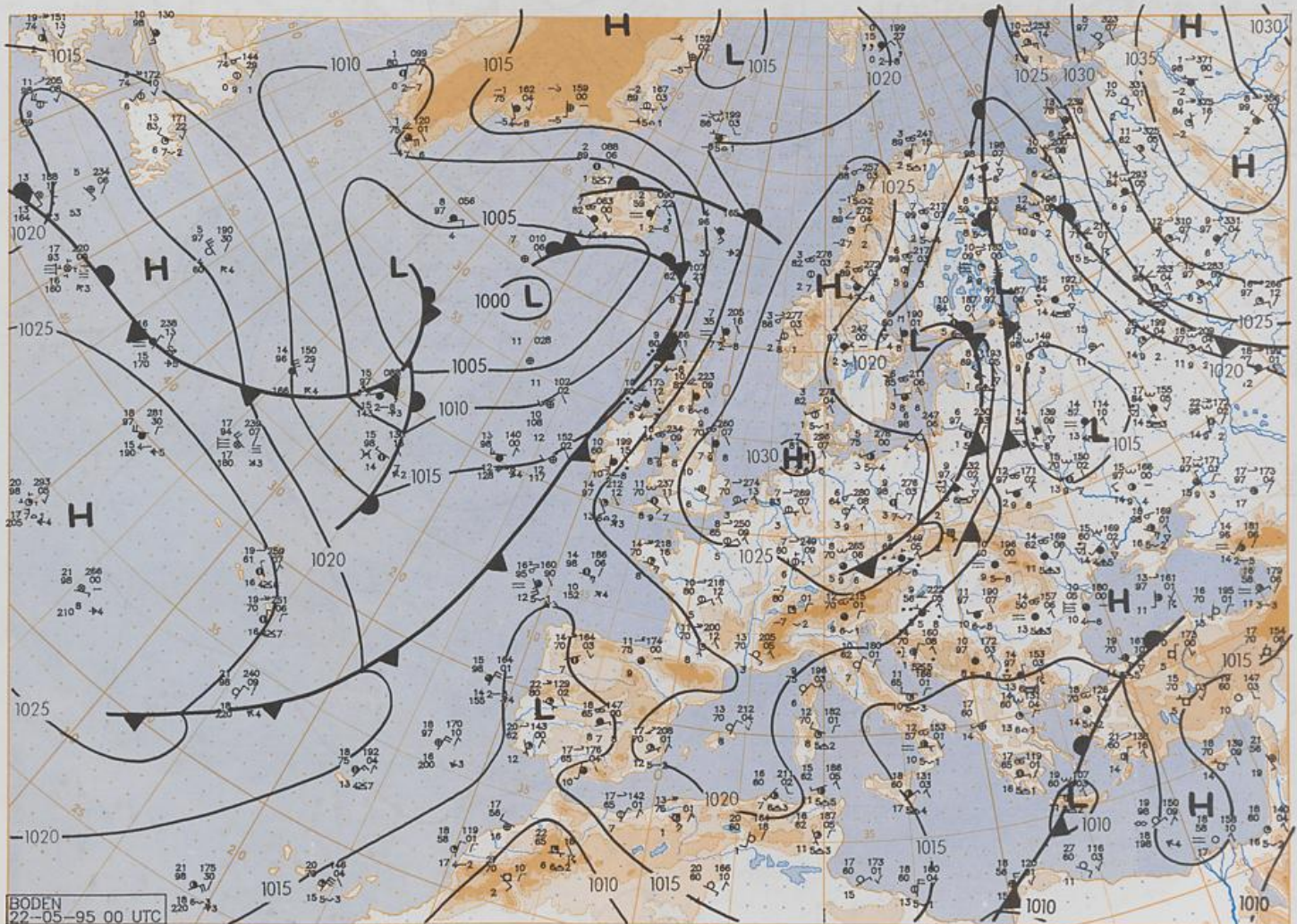
Se publica diariamente
Precio de suscripción anual DM 456.-
plus porte
Se prohíbe la reproducción

Jahrgang
Volume 20
Volume
Volumen

Montag
Monday
Lundi
Lunes
22.05.1995

Nummer
Number 142
Número
Número

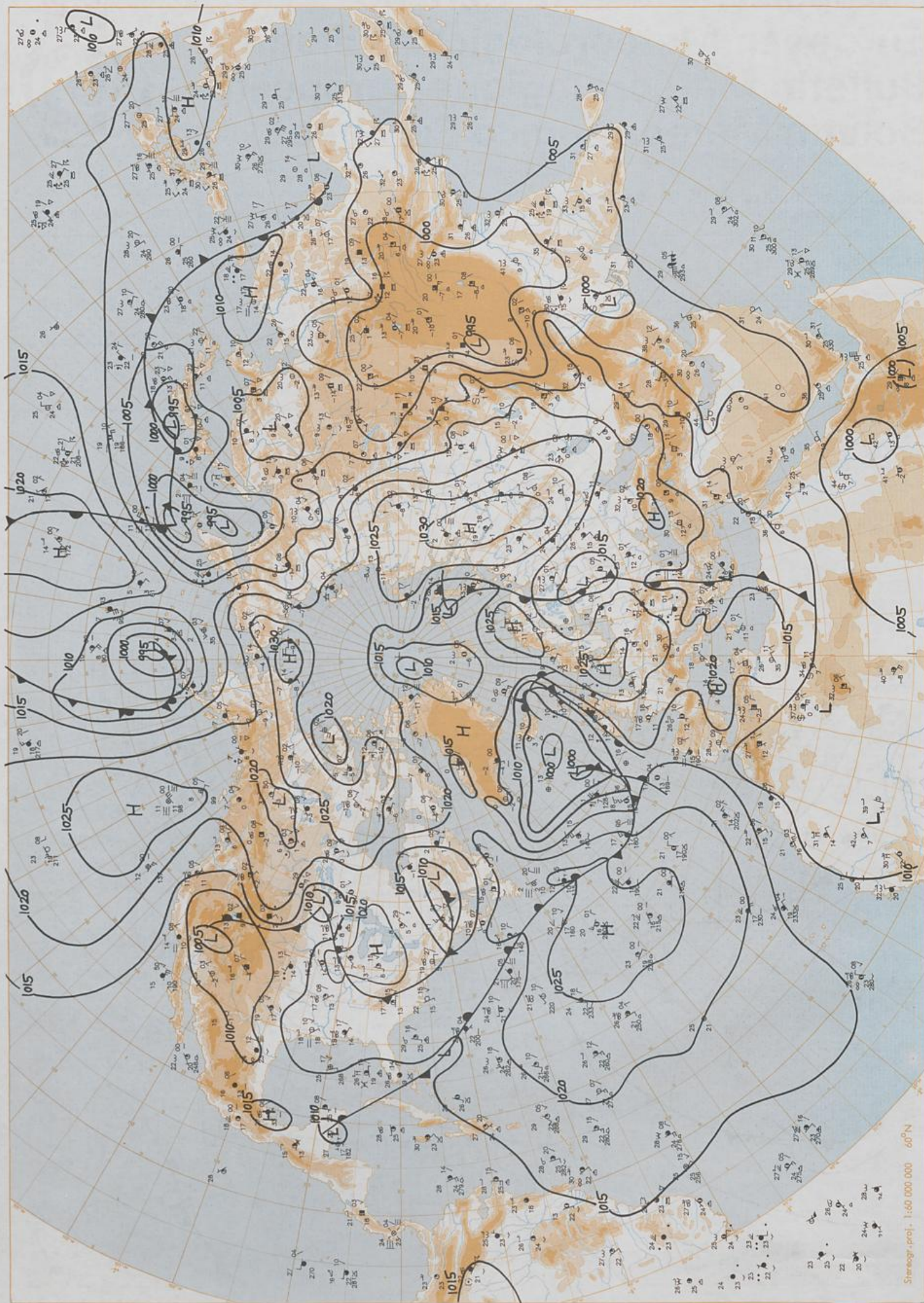
Inhalt	Contents	Contenu	Contenido
Bodenwetterkarte 00 UTC	Surface chart 00 UTC	Carte de surface 00 UTC	Análisis superficie 00 UTC
Bodenwetterkarte Nordhemisphäre 12 UTC	Surface chart northern hemisphere 12 UTC	Carte de surface sur l'hémisphère nord 12 UTC	Análisis en superficie hemisferio norte 12 UTC
500 - hPa-Fläche Nordhemisphäre 12 UTC	500 hPa surface northern hemisphere 12 UTC	Surface 500 hPa sur l'hémisphère nord 12 UTC	Topografía de la superficie de 500 hPa hemisferio norte 12 UTC
200 - hPa-Fläche Nordhemisphäre 12 UTC	200 hPa surface northern hemisphere 12 UTC	Surface 200 hPa sur l'hémisphère nord 12 UTC	Topografía de la superficie de 200 hPa hemisferio norte 12 UTC
100 - hPa-Fläche Nordhemisphäre 12 UTC	100 hPa surface northern hemisphere 12 UTC	Surface 100 hPa sur l'hémisphère nord 12 UTC	Topografía de la superficie de 100 hPa hemisferio norte 12 UTC
850 - hPa 12 UTC, 700 hPa 12 UTC	850 hPa 12 UTC, 700 hPa 12 UTC	850 hPa 12 UTC, 700 hPa 12 UTC	850 hPa 12 UTC, 700 hPa 12 UTC
Relative Topographie 500/1000 hPa 12 UTC	Thickness chart 500/1000 hPa 12 UTC	Carte d'épaisseur 500/1000 hPa 12 UTC	Relativa 500/1000 hPa 12 UTC
300 - hPa 12 UTC	300 hPa 12 UTC	300 hPa 12 UTC	300 hPa 12 UTC
Aerologische Diagramme 12 UTC	Aerological diagrams 12 UTC	Diagrammes aérologiques 12 UTC	Diagramas aerológicos 12 UTC



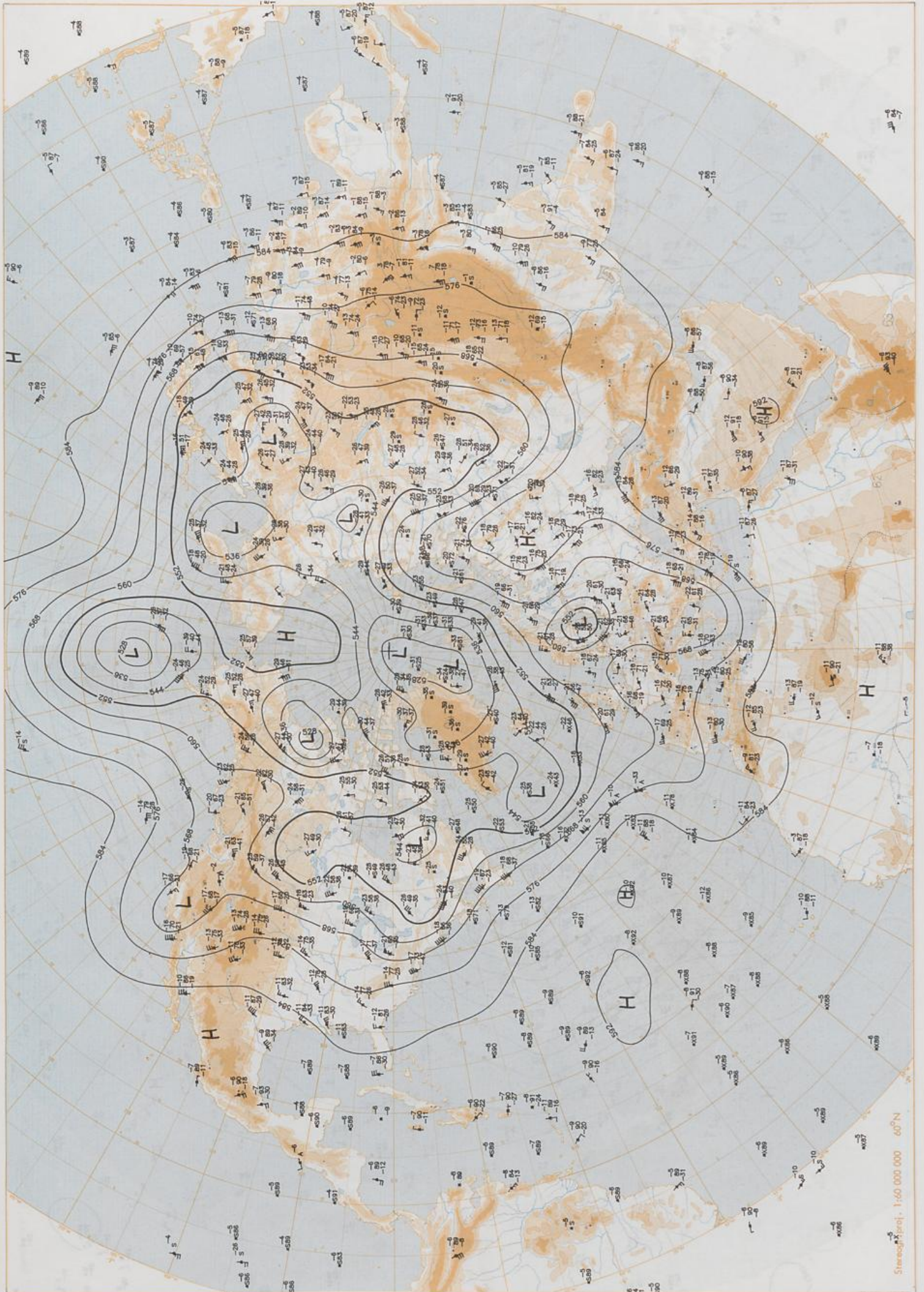
BODEN
22-05-95 00 UTC

Stereogr. proj. 1:30 000 000 60°N

Surface chart 00 UTC

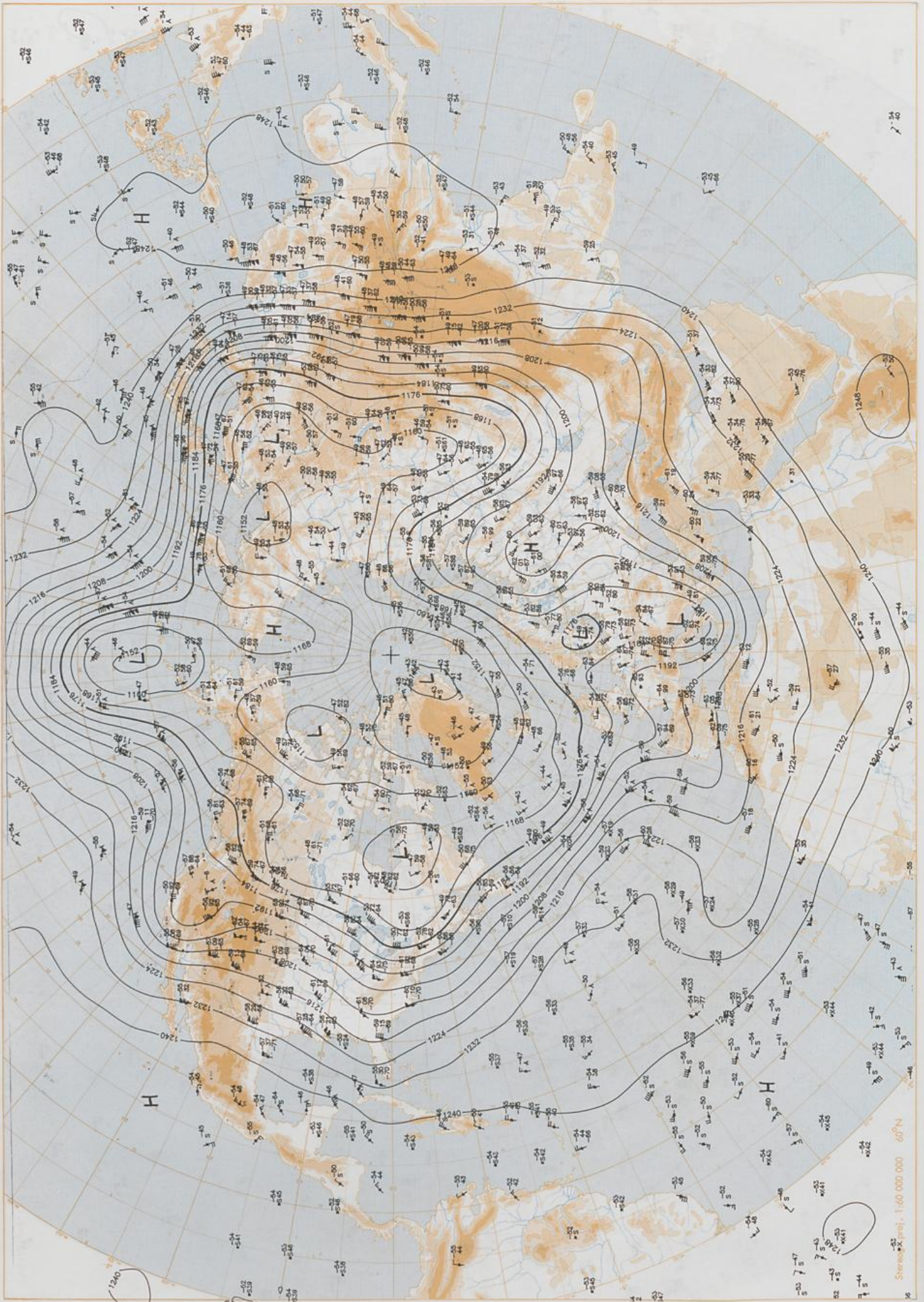


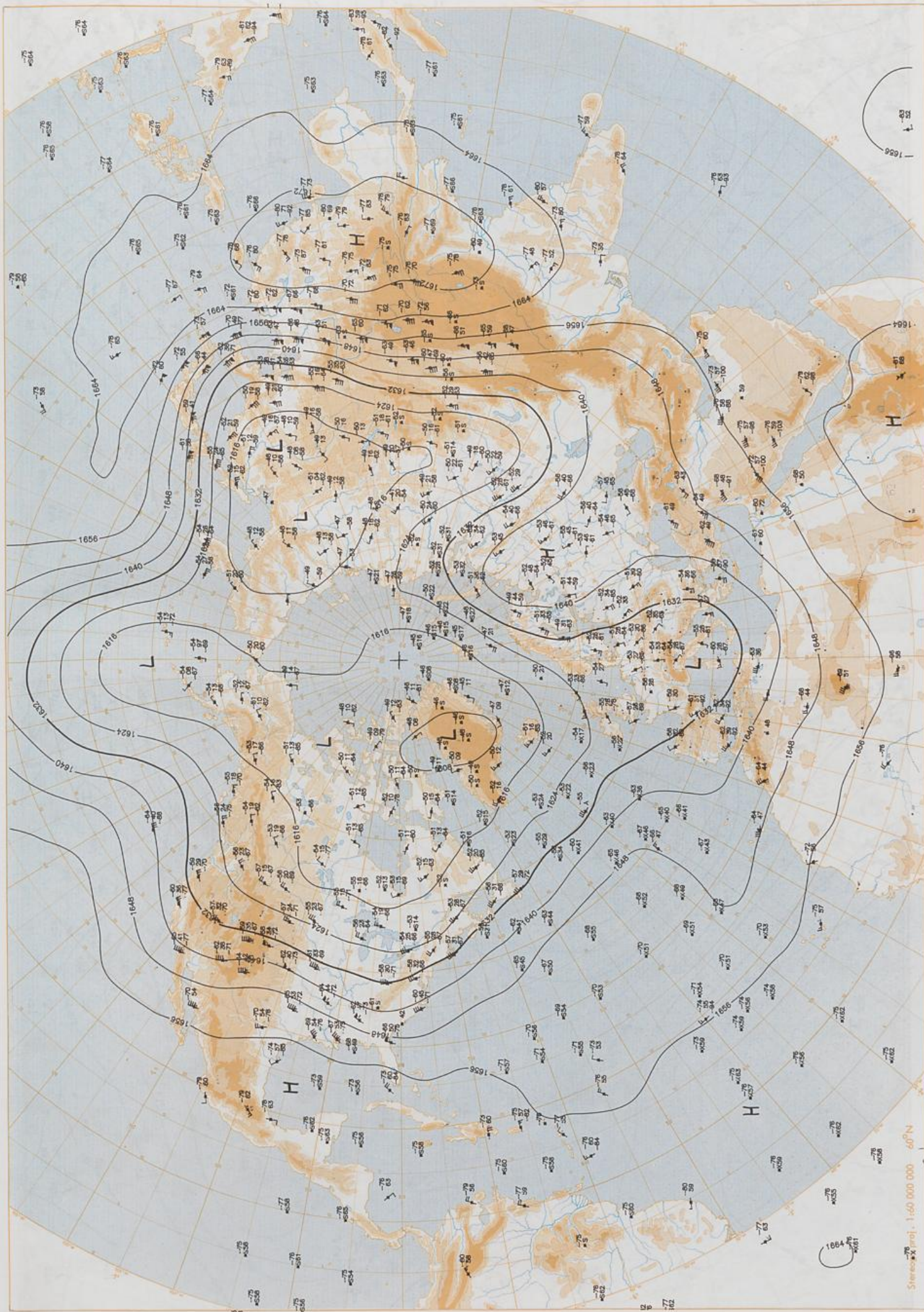
Stereogr. proj. 1:60 000 000 60°N



500 hPa 12 UTC

Stereographic, 1:40 000 000 60°N

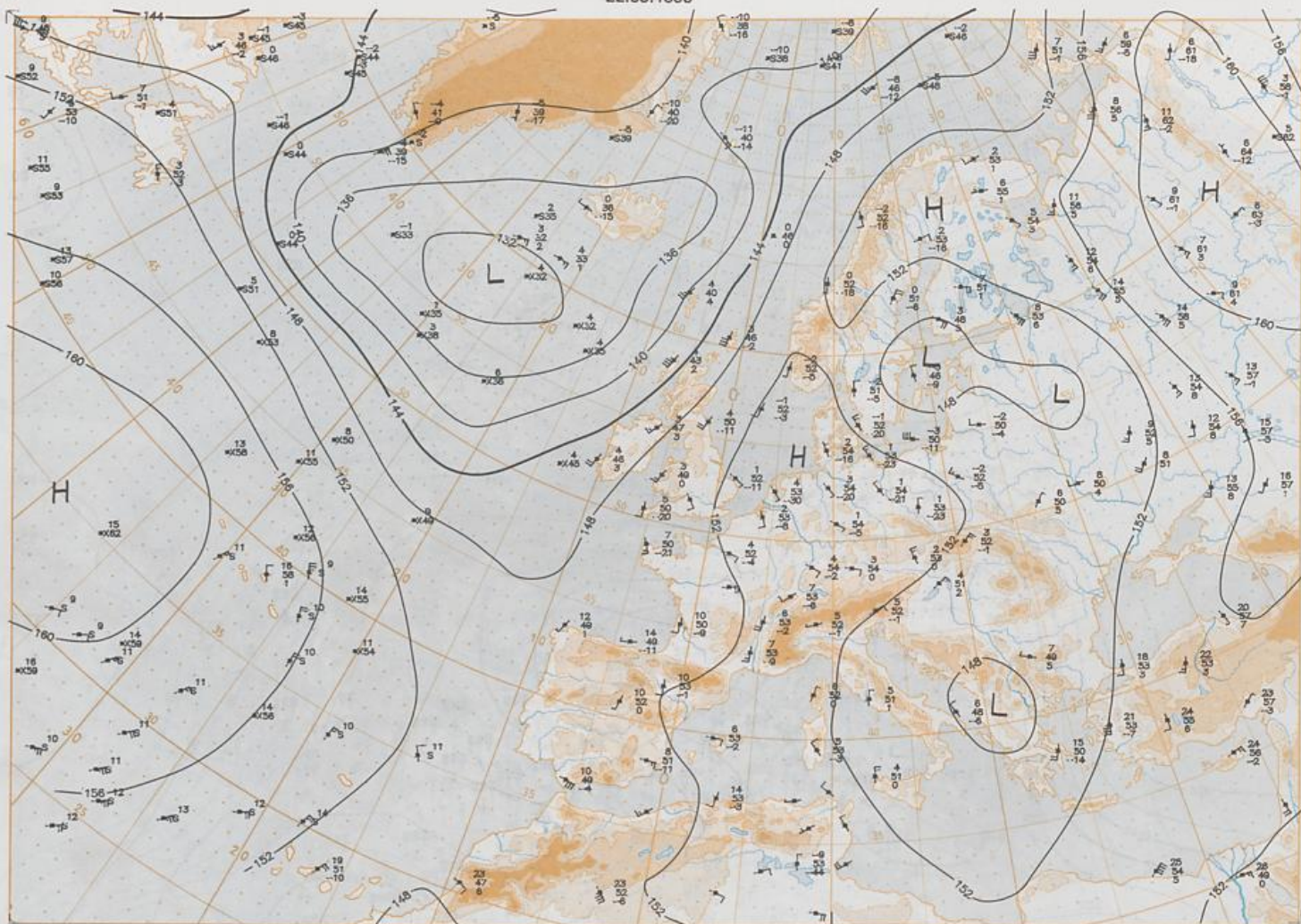




100 hPa 12 UTC

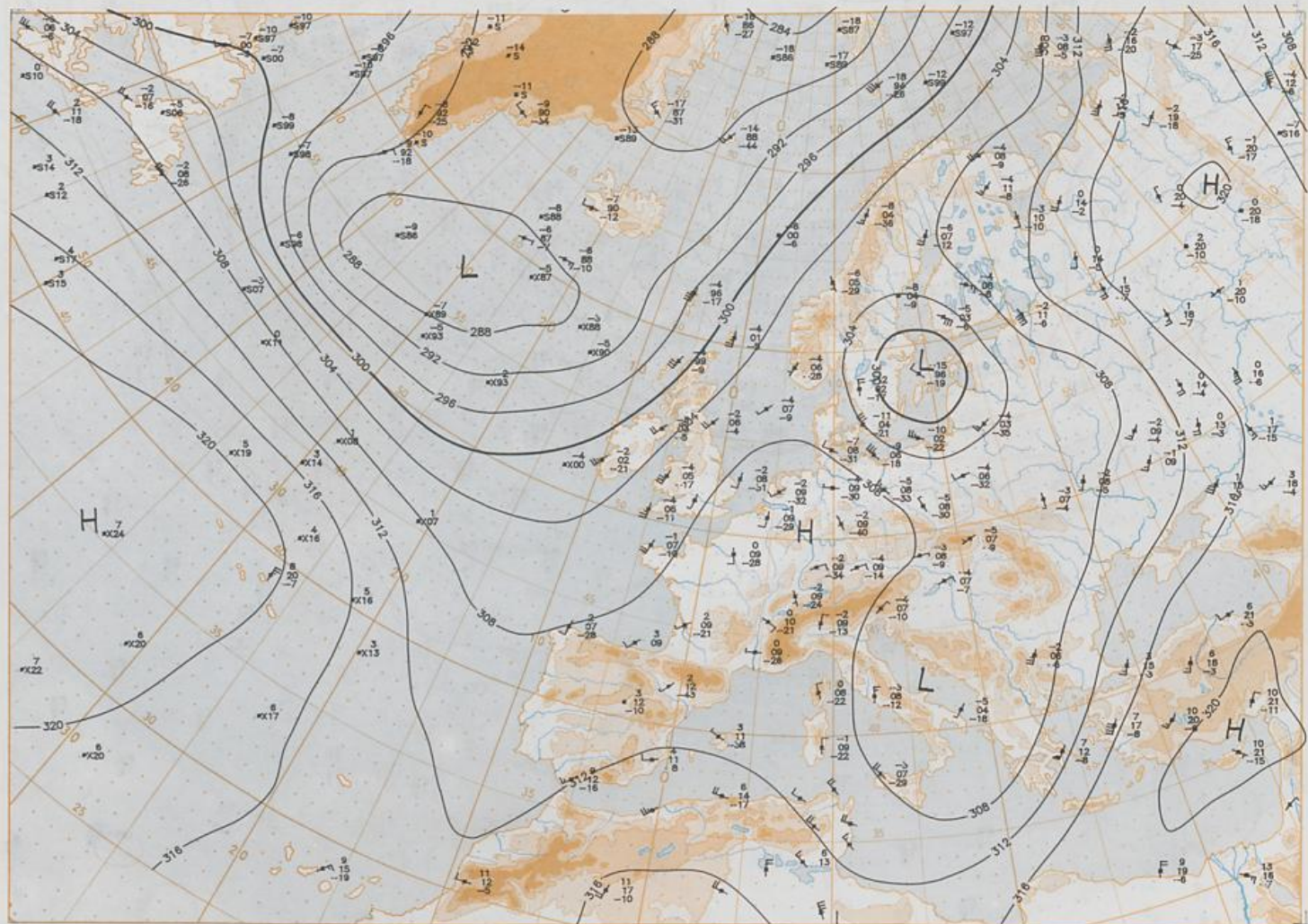
Stereographic proj. 1:60 000 000 60°N

22.05.1995

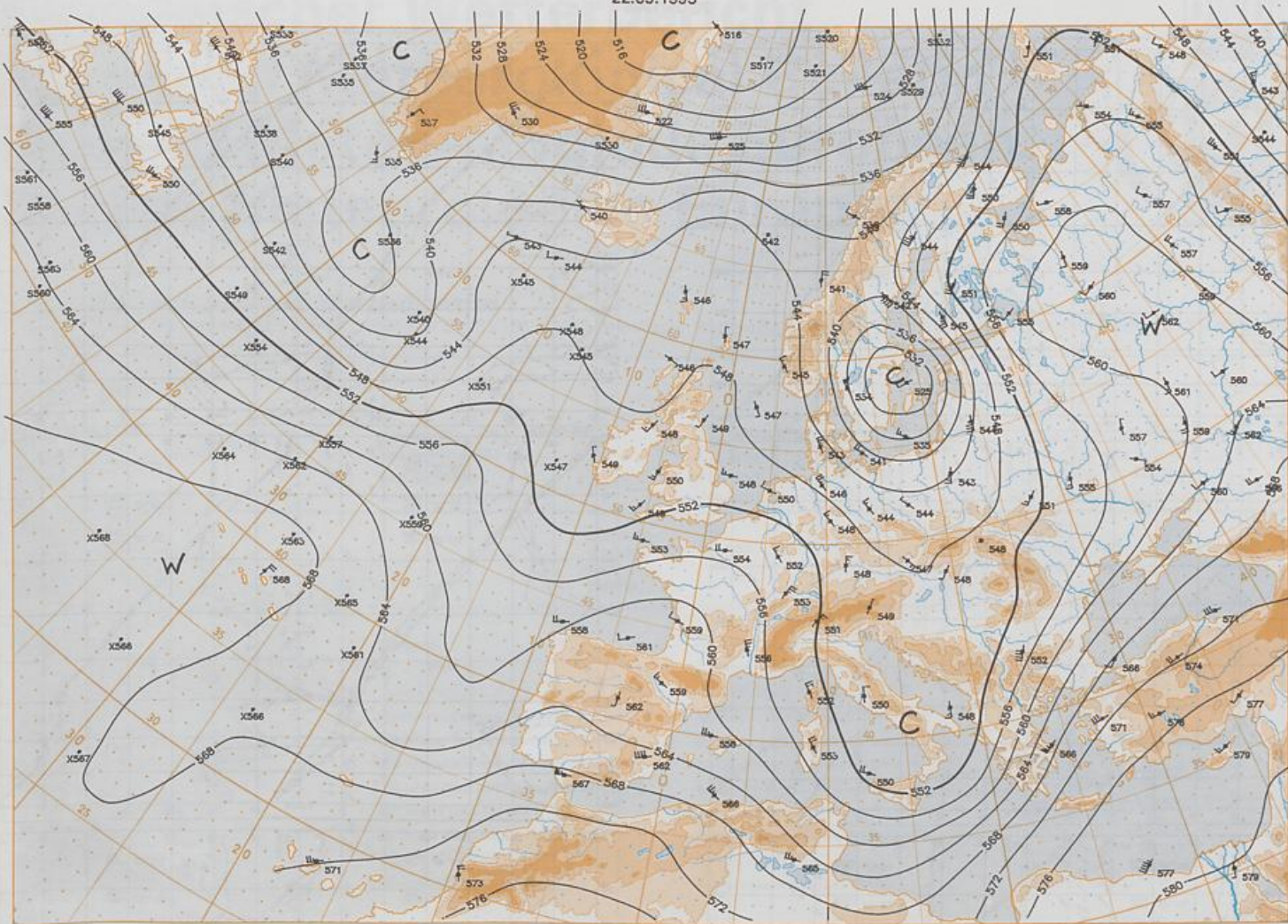


Stereogr. proj. 1:30 000 000 in 60°N

850 hPa 12 UTC

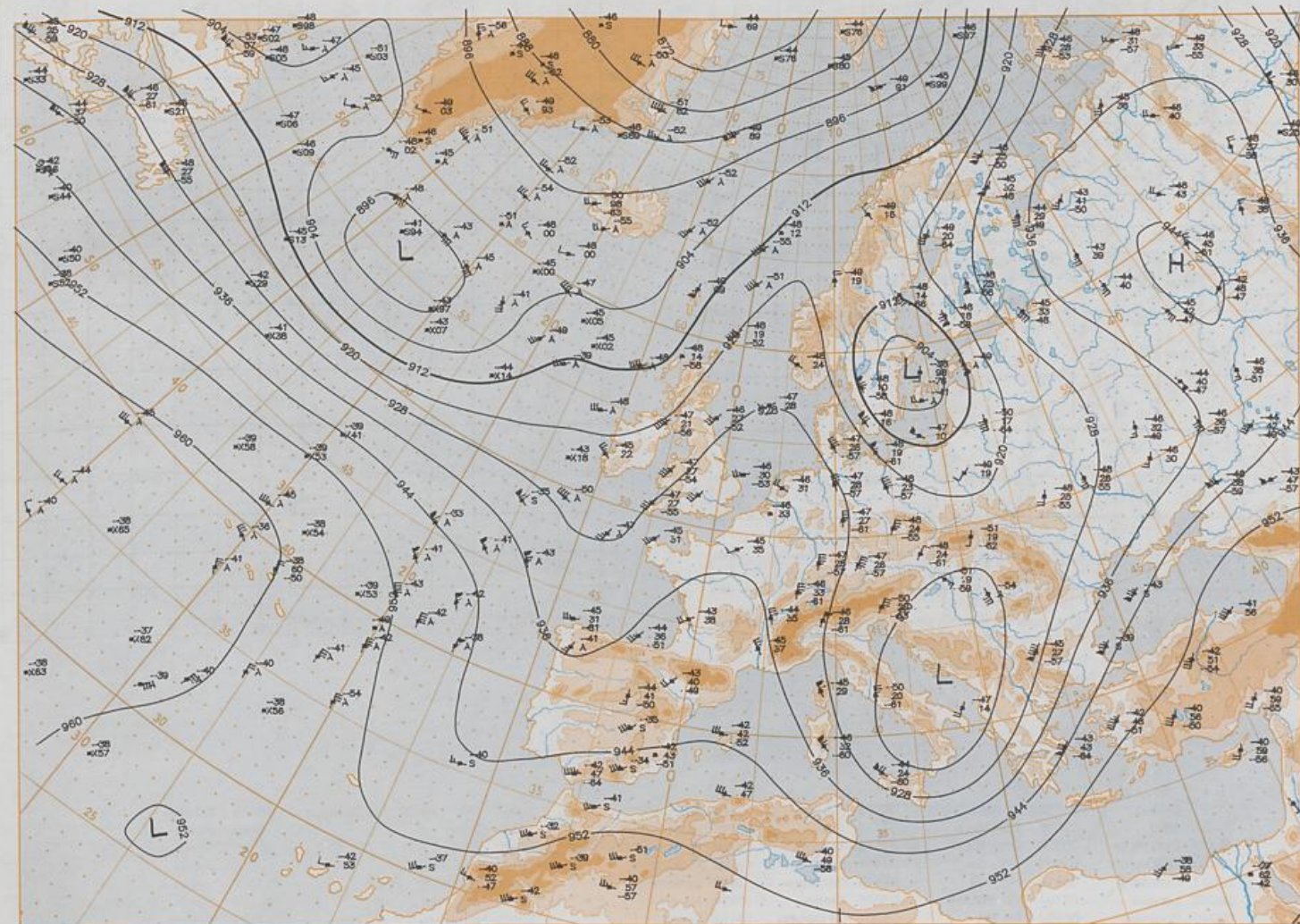


700 hPa 12 UTC

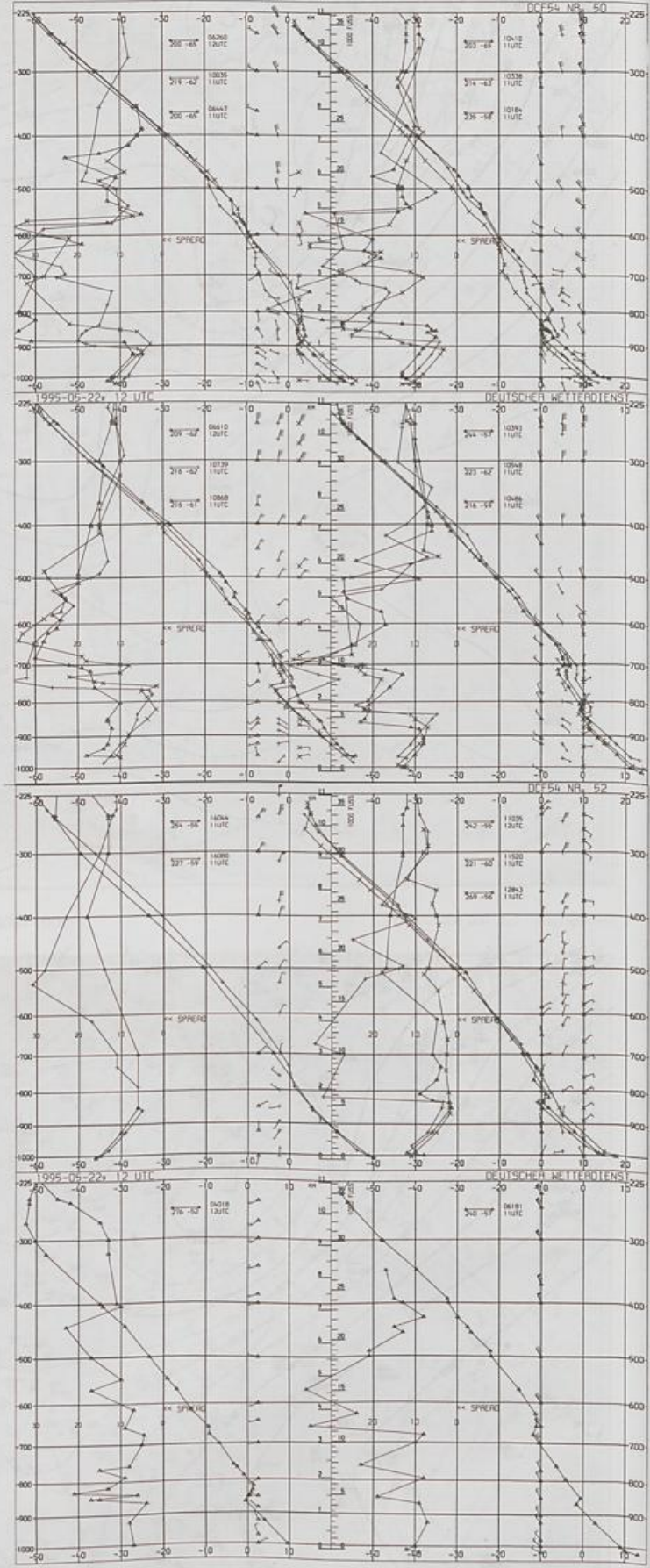
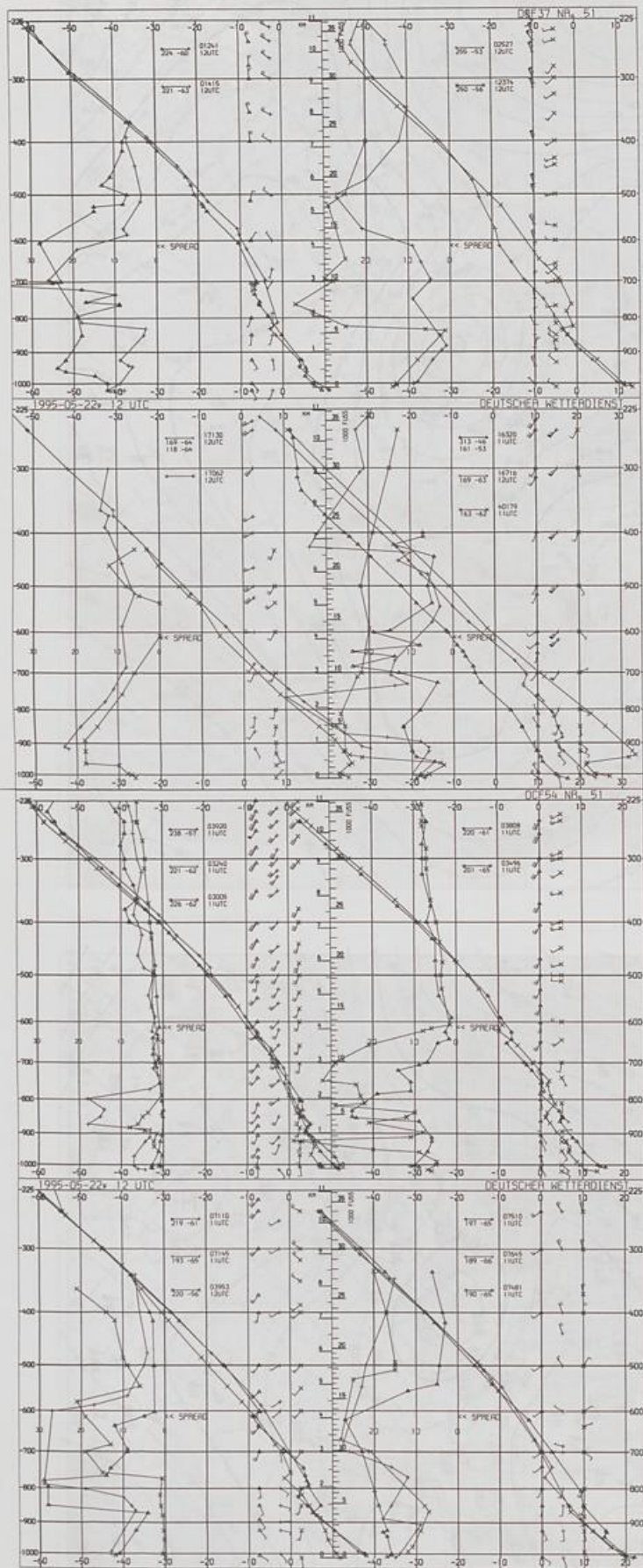


Stereogr. proj. 1:30 000 000 in 60°N

500/1000 hPa 12 UTC



300 hPa 12 UTC



Aerological
Diagrams
12 UTC

01241 Orland	03882 Herstmonceux	06610 Payame	10184 Greifswald	10868 München-Oberschleißheim	16080 Milano
01384 Oslo	03808 Camborne	07710 Brest	10393 Lindenberg	11035 Wien	16245 Roma
01415 Stavanger	03920 Long Kesh	07145 Trappes	10486 Dresden-Wahnsdorf	16320 Brindisi	16716 Athen
02465 Stockholm	03953 Valencia	07481 Lyon	10548 Meiningen	12374 Legionowo	17062 Istanbul
02527 Göteborg	04018 Keflavik	07510 Bordeaux	10035 Schleswig	12843 Budapest	40179 Bet Dagan/Israel
03005 Lerwick	06181 Kobenhavn	07645 Nimes	10338 Hannover	13275 Beograd	17130 Ankara
03240 Boulmer	06260 De Bilt	08001 La Coruna	10410 Essen	15420 Bukarest	27612 Moskva
03496 Hemsby	06447 Uccle	08579 Lisboa	10739 Stuttgart	16044 Udine	