

Europäischer Wetterbericht European Meteorological Bulletin Bulletin Météorologique Européen Boletín Meteorológico Europeo



Amtsblatt des Deutschen Wetterdienstes

Druck und Verlag: Deutscher Wetterdienst, Frankfurter Straße 135, 63067 Offenbach · Postanschrift: 63004 Offenbach, Postfach 100465, Telefon: (0 69) 80 62-22 84

D 6168 A
ISSN 0341-2970

Erscheint täglich
Bezugspreis jährlich DM 456.-
zuzügl. Porto
Nachdruck nicht gestattet

Issued daily
Yearly Price DM 456.-
plus postage
All rights reserved

Publié quotidiennement
Prix annuel DM 456.-
plus port
Reproduction interdite

Se publica diariamente
Precio de suscripción anual DM 456.-
plus porte
Se prohíbe la reproducción

Jahrgang
Volume 20
Volume
Volumen

Donnerstag
Thursday 28.09.1995
Jeudi
Jueves

Number
Number 271
Número
Número

Inhalt

Bodenwetterkarte 00 UTC
Bodenwetterkarte Nordhemisphäre 12 UTC
500 - hPa-Fläche Nordhemisphäre 12 UTC
200 - hPa-Fläche Nordhemisphäre 12 UTC
100 - hPa-Fläche Nordhemisphäre 12 UTC
850 - hPa 12 UTC, 700 hPa 12 UTC
Relative Topografie 500/1000 hPa 12 UTC
300 - hPa 12 UTC
Aerologische Diagramme 12 UTC

Contents

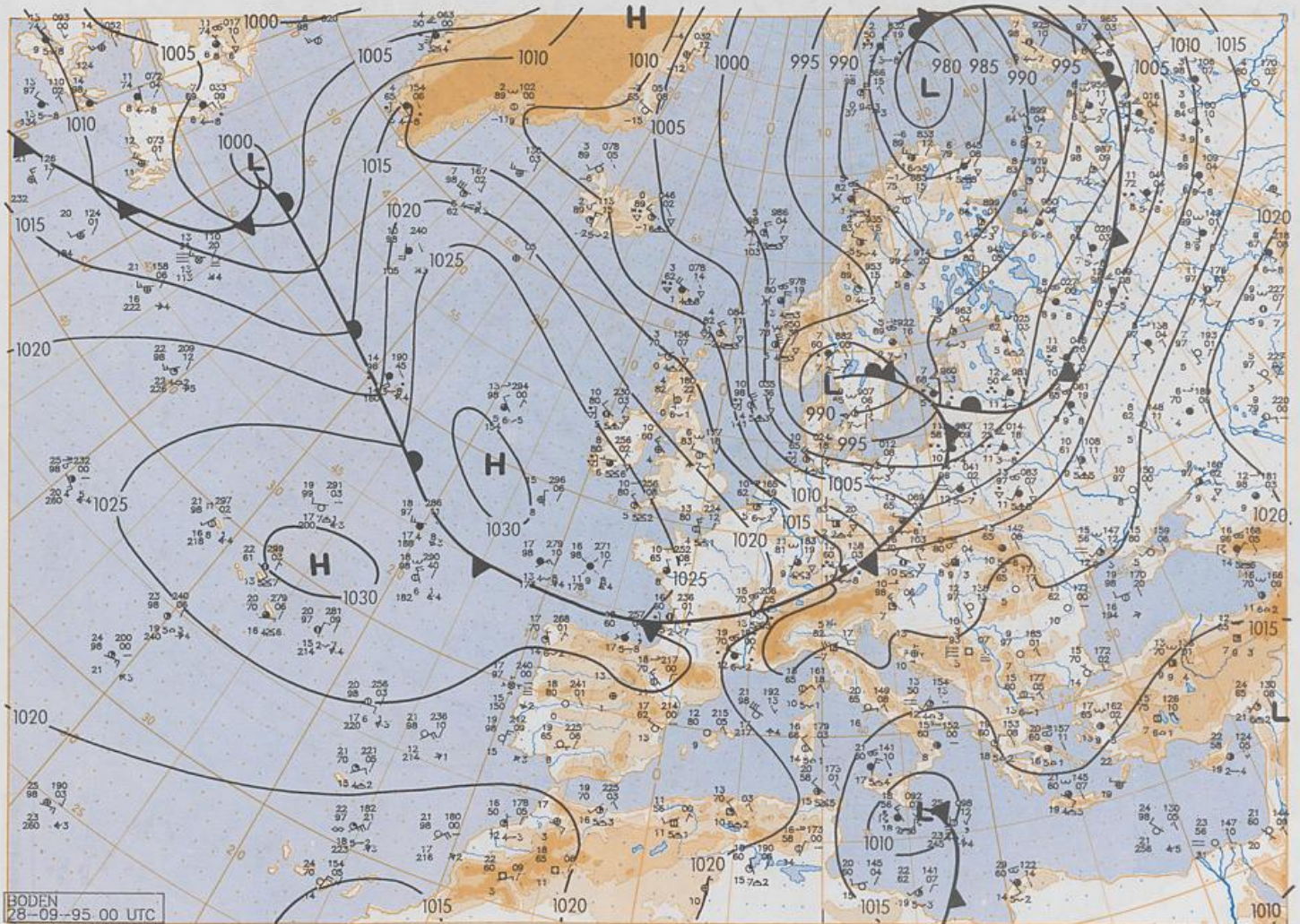
Surface chart 00 UTC
Surface chart northern hemisphere 12 UTC
500 hPa surface northern hemisphere 12 UTC
200 hPa surface northern hemisphere 12 UTC
100 hPa surface northern hemisphere 12 UTC
850 hPa 12 UTC, 700 hPa 12 UTC
Thickness chart 500/1000 hPa 12 UTC
300 hPa 12 UTC
Aerological diagrams 12 UTC

Contenu

Carte de surface 00 UTC
Carte de surface sur l'hémisphère nord 12 UTC
Surface 500 hPa sur l'hémisphère nord 12 UTC
Surface 200 hPa sur l'hémisphère nord 12 UTC
Surface 100 hPa sur l'hémisphère nord 12 UTC
850 hPa 12 UTC, 700 hPa 12 UTC
Carte d'épaisseur 500/1000 hPa 12 UTC
300 hPa 12 UTC
Diagrammes aérologiques 12 UTC

Contenido

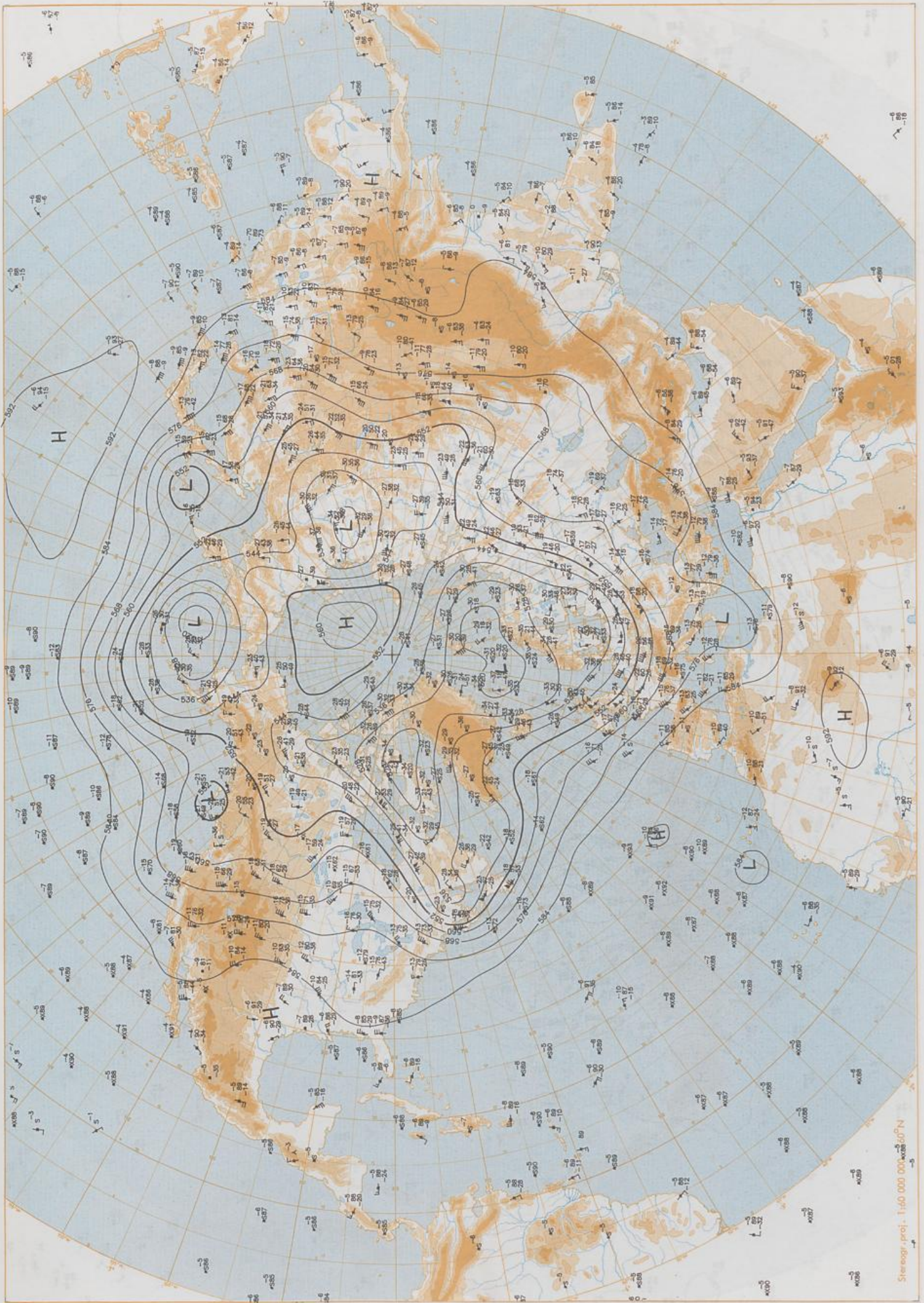
Análisis superficie 00 UTC
Análisis en superficie hemisferio norte 12 UTC
Topografía de la superficie de 500 hPa hemisferio norte 12 UTC
Topografía de la superficie de 200 hPa hemisferio norte 12 UTC
Topografía de la superficie de 100 hPa hemisferio norte 12 UTC
850 hPa 12 UTC, 700 hPa 12 UTC
Relativa 500/1000 hPa 12 UTC
300 hPa 12 UTC
Diagramas aerológicos 12 UTC



BODEN
28-09-95 00 UTC

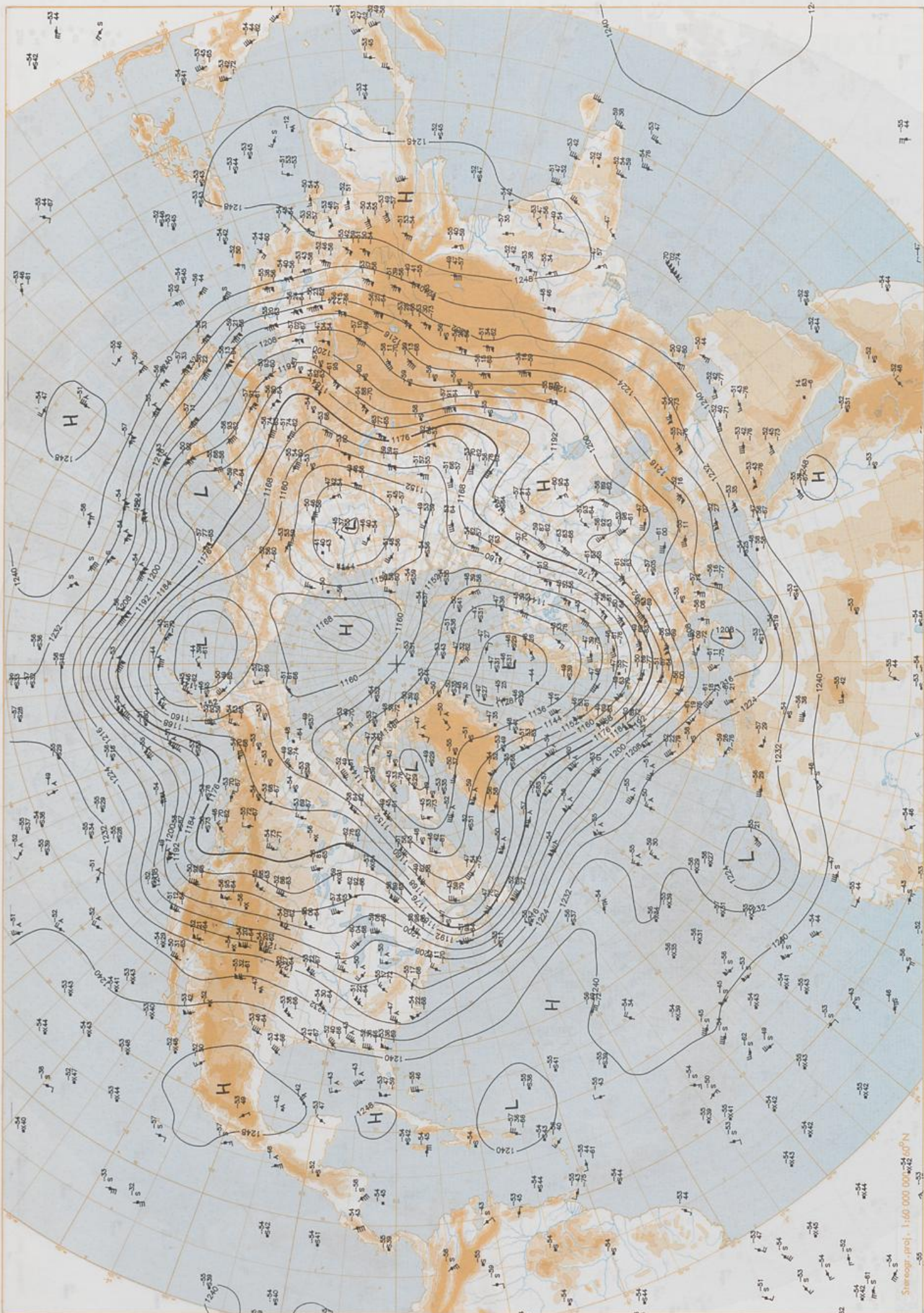
Stereogr. proj. 1:30 000 000 60°N

Surface chart 00 UTC



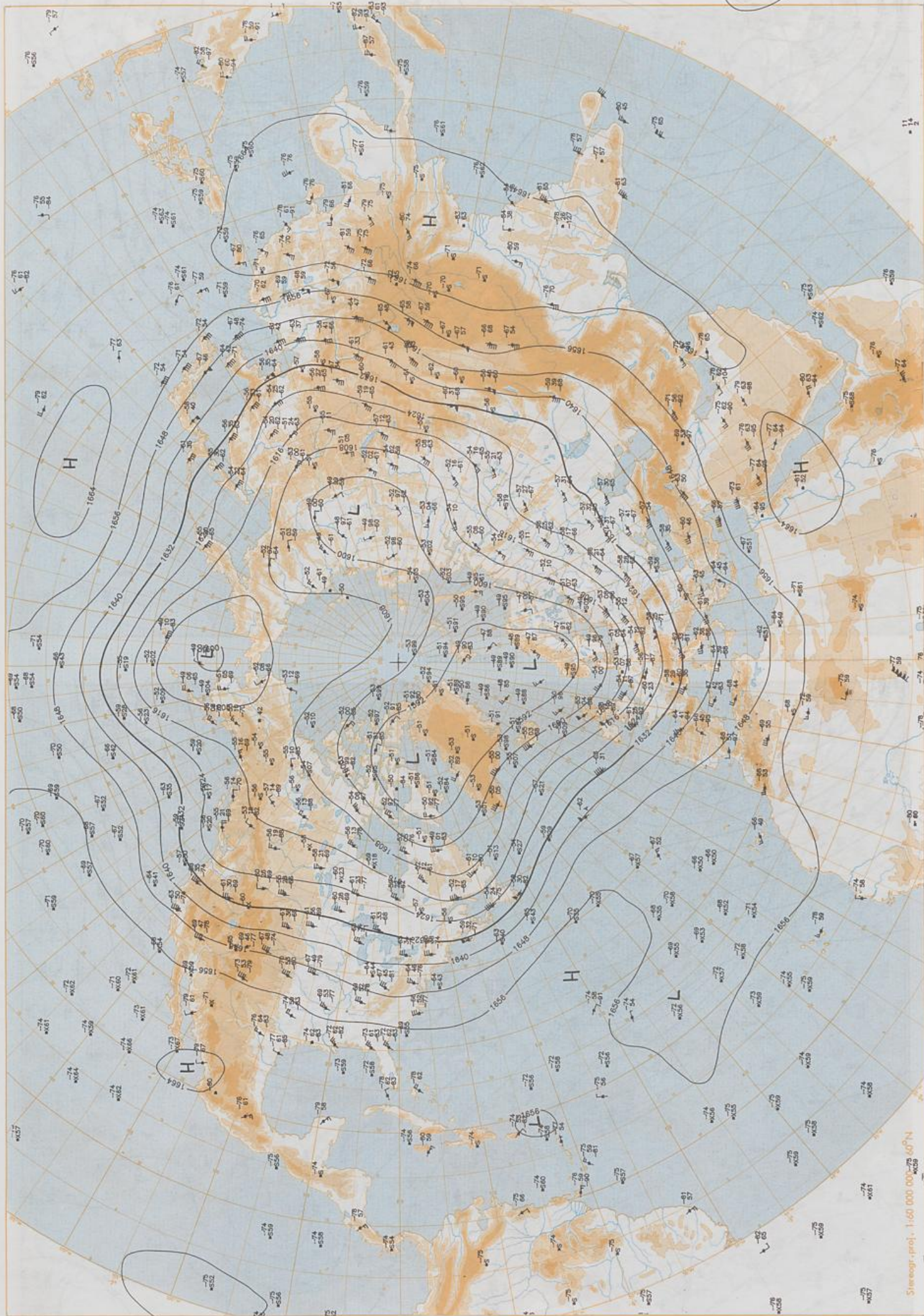
500 hPa 12 UTC

Stereogr. proj. 1:60 000 000 WGS 84



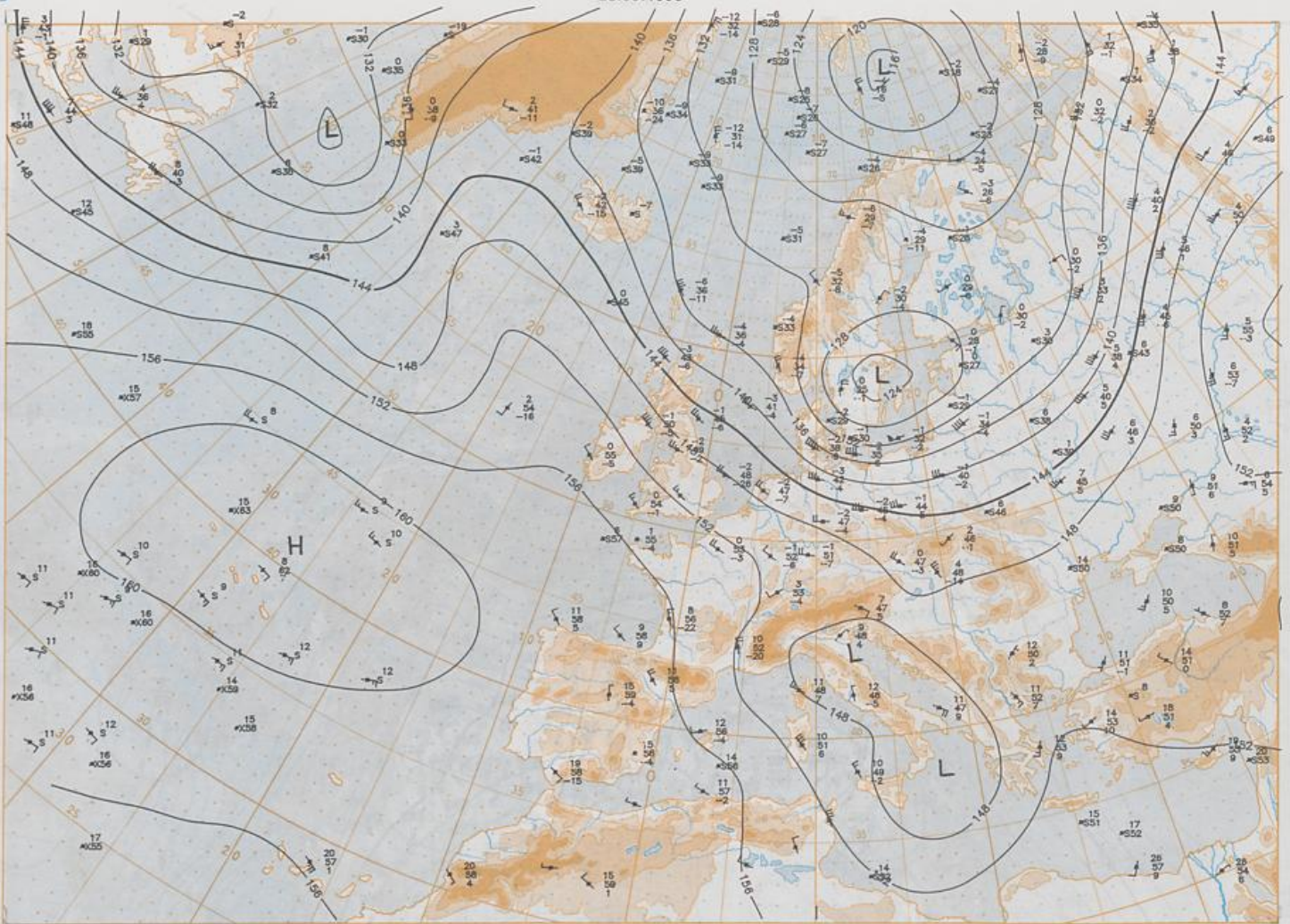
200 hPa 12 UTC

Scale: 1:500 000



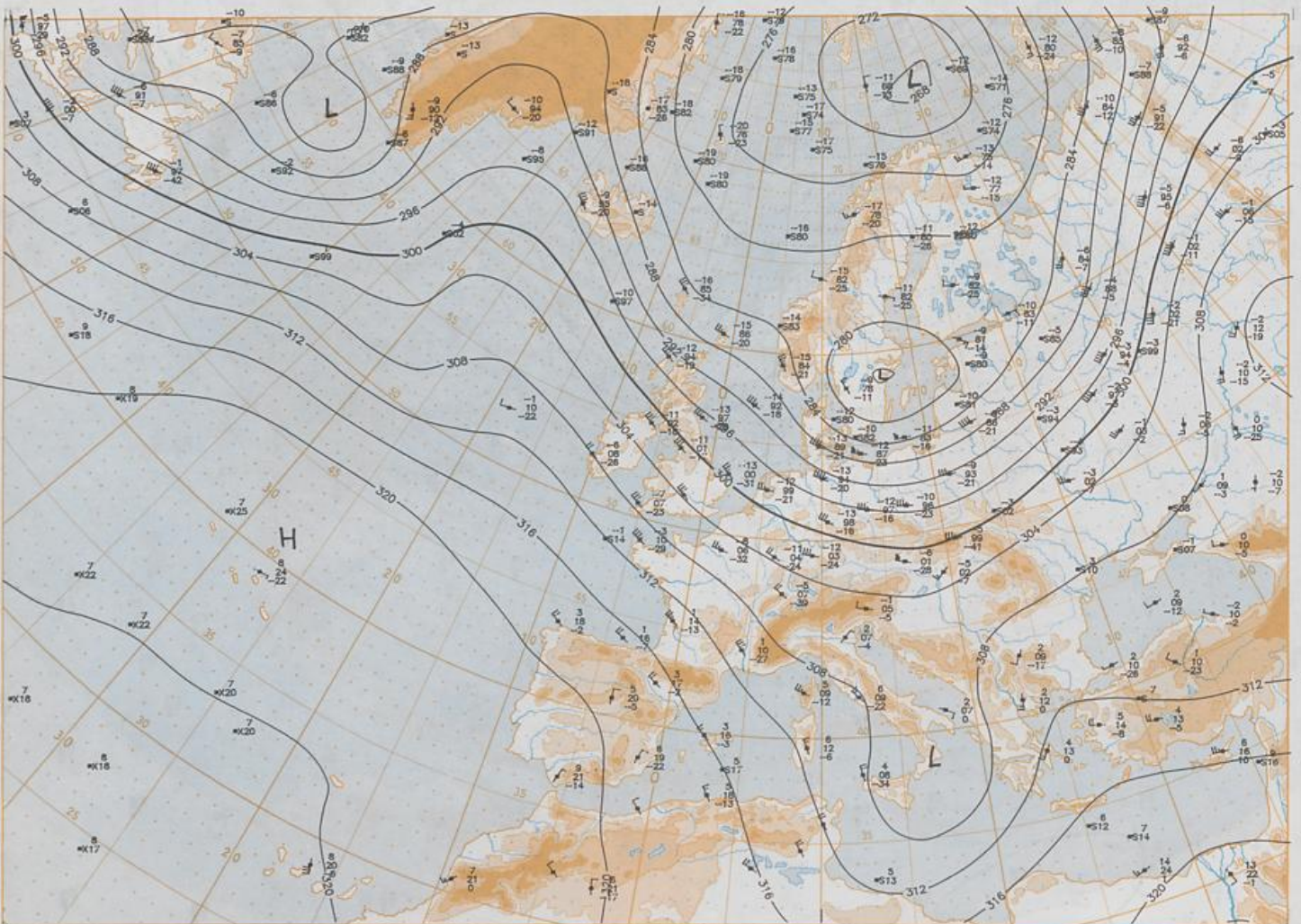
100 hPa 12 UTC

Scale: 1:1,600,000 000-75 40°N



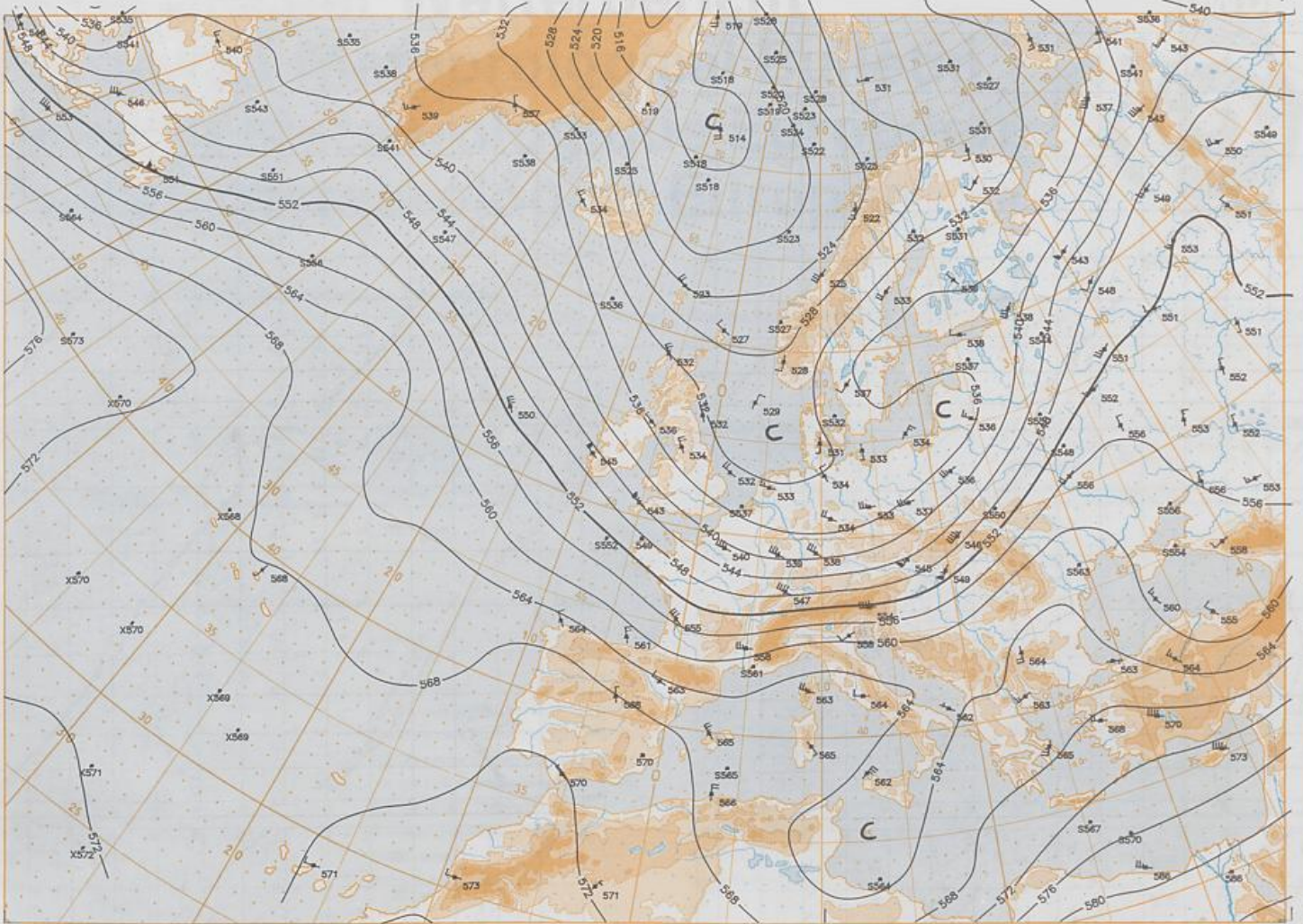
Stereogr. proj. 1:30 000 000 in 60°N

850 hPa 12 UTC



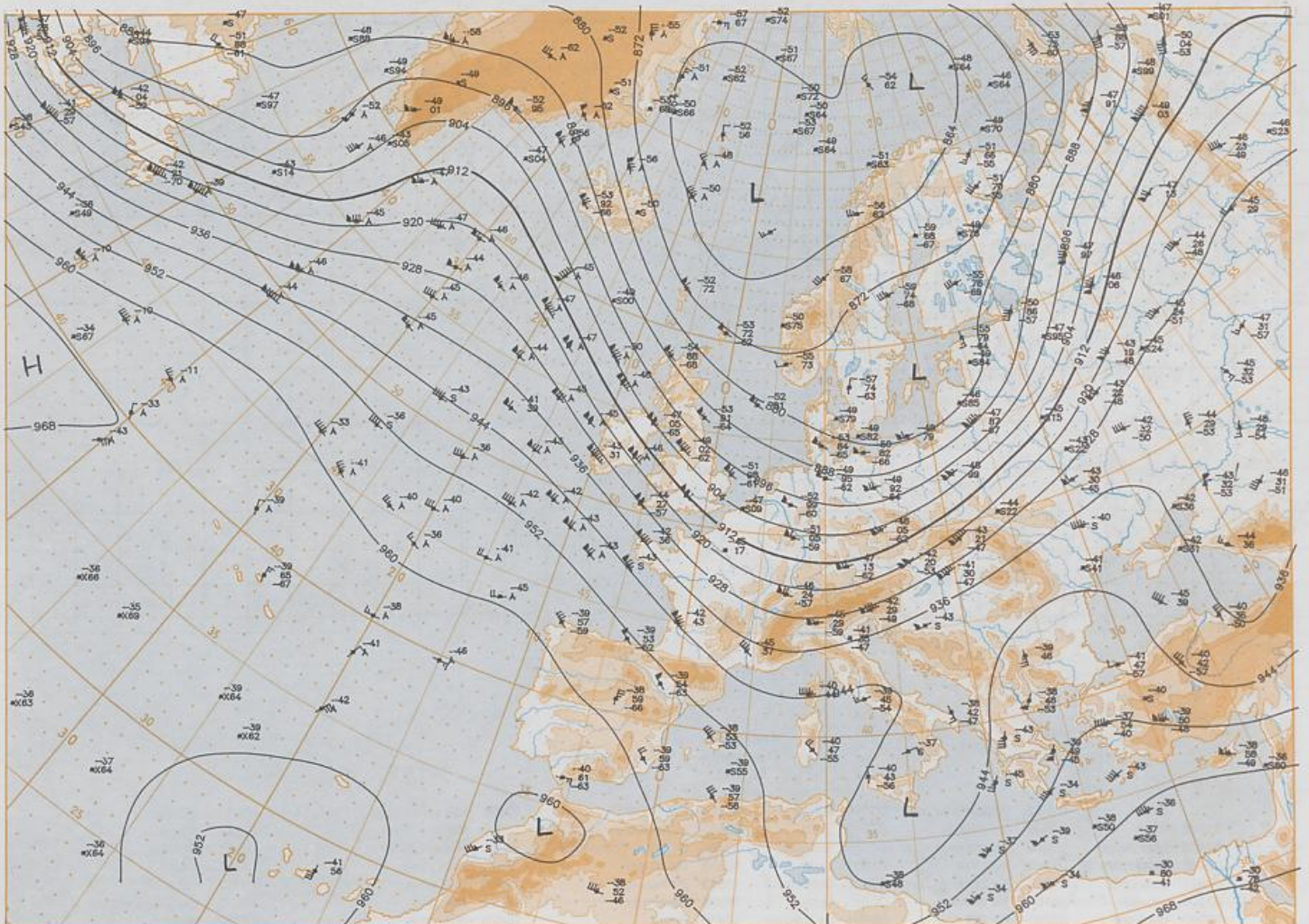
700 hPa 12 UTC

28.09.1995

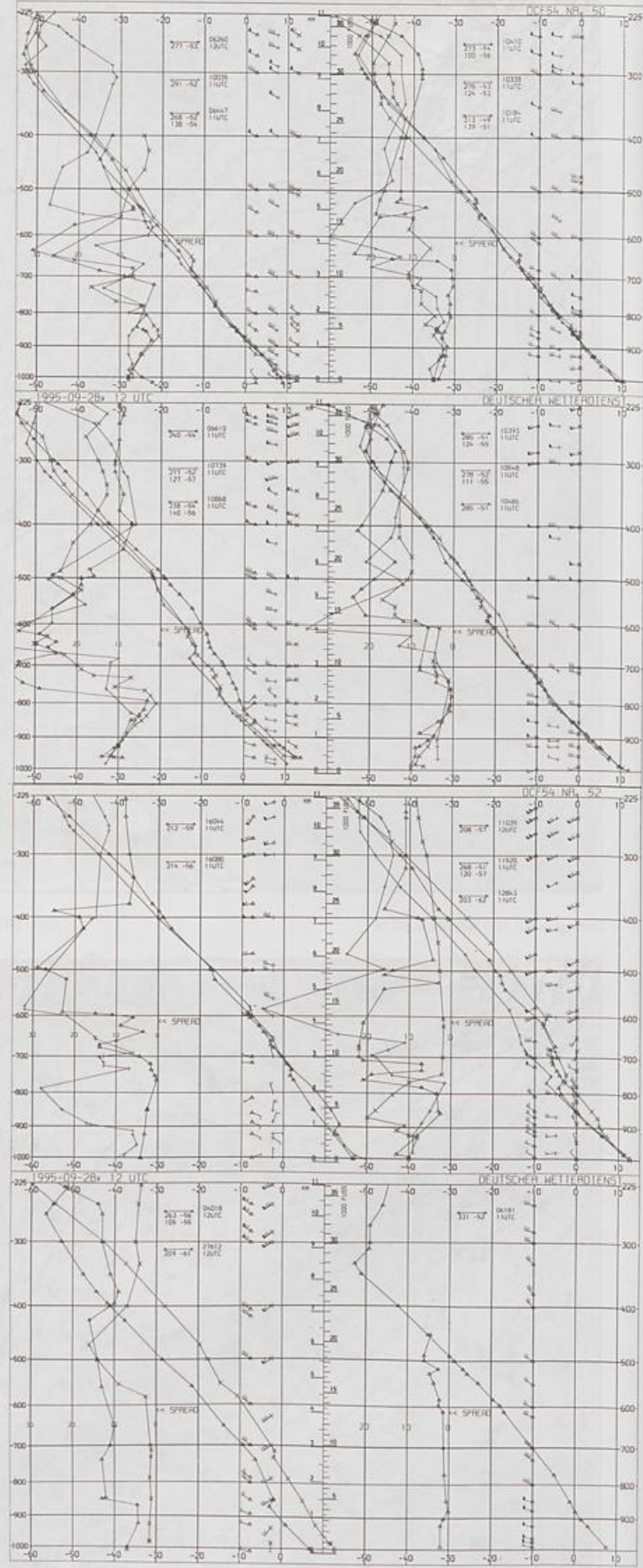
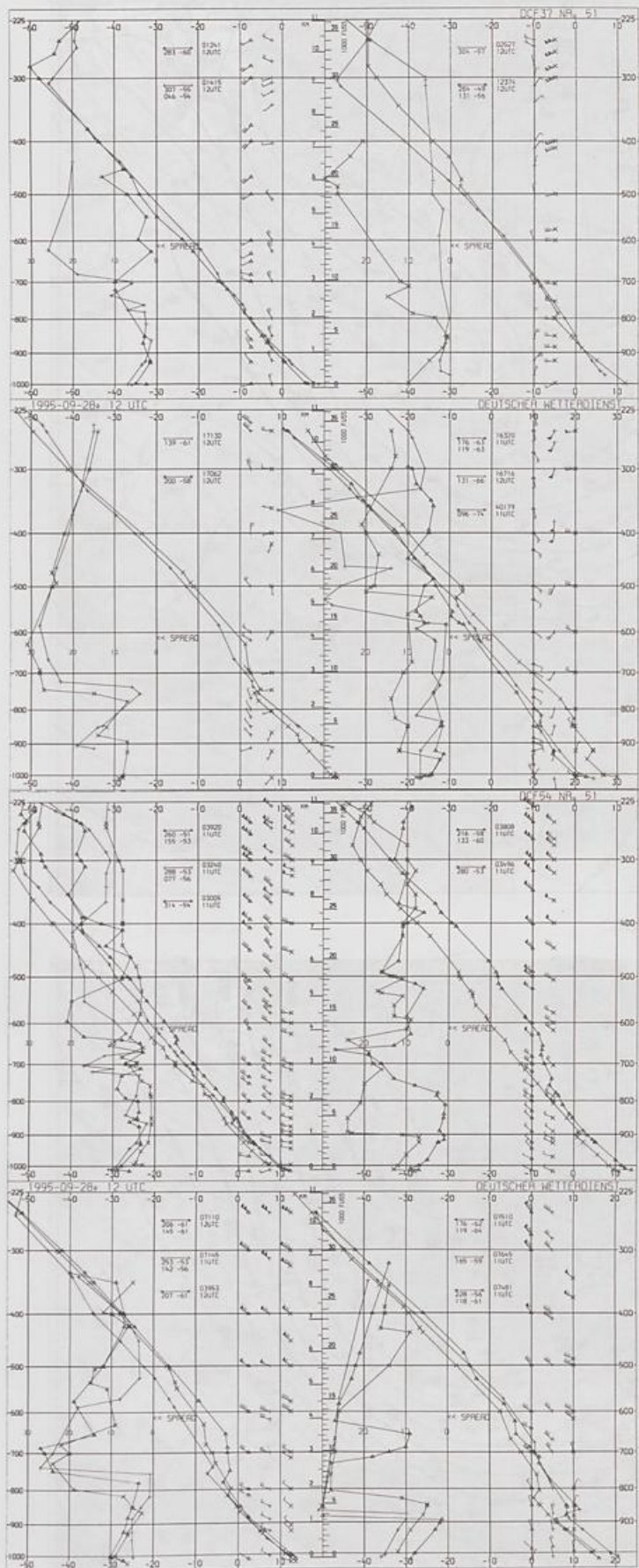


Stereogr.proj. 1:30 000 000 in 60°N

500/1000 hPa 12 UTC



300 hPa 12 UTC



Aerological Diagrams 12 UTC

- | | | | | | |
|-----------------|--------------------|-----------------|-------------------------|-------------------------------|------------------------|
| 01241 Orland | 03882 Herstmouceux | 06610 Payerne | 10184 Greifswald | 10868 München-Oberschleißheim | 16080 Milano |
| 01384 Oslo | 03808 Cambome | 07710 Brest | 10393 Lindenberg | 11035 Wien | 16245 Roma |
| 01415 Stavanger | 03920 Long Kesh | 07145 Trappes | 10486 Dresden-Wahnsdorf | 11520 Praha-Libus | 16320 Brindisi |
| 02465 Stockholm | 03953 Valentia | 07481 Lyon | 10548 Meiningen | 12374 Legionowo | 16716 Athen |
| 02527 Göteborg | 04018 Keflavik | 07510 Bordeaux | 10035 Schleswig | 12843 Budapest | 17062 Istanbul |
| 03005 Lerwick | 06181 Kobenhavn | 07645 Nimes | 10338 Hannover | 13275 Beograd | 40179 Bet Dagan/Israel |
| 03240 Boulmer | 06260 De Bilt | 08001 La Coruna | 10410 Essen | 15420 Bukarest | 41730 Ankara |
| 03496 Hemsby | 06447 Uccle | 08579 Lisboa | 10739 Stuttgart | 16044 Udine | 27612 Moskava |