

# Europäischer Wetterbericht European Meteorological Bulletin Bulletin Météorologique Européen Boletín Meteorológico Europeo



## Amtsblatt des Deutschen Wetterdienstes

Druck und Verlag: Deutscher Wetterdienst, Frankfurter Straße 135, 63067 Offenbach · Postanschrift: 63004 Offenbach, Postfach 100465, Telefon: (0 69) 80 62-22 84

D 6168 A  
ISSN 0341-2970

Erscheint täglich  
Bezugspreis jährlich DM 456.–  
zuzügl. Porto  
Nachdruck nicht gestattet

Issued daily  
Yearly Price DM 456.–  
plus postage  
All rights reserved

Publié quotidiennement  
Prix annuel DM 456.–  
plus port  
Reproduction interdite

Se publica diariamente  
Precio de suscripción anual DM 456.–  
plus porte  
Se prohíbe la reproducción

Jahrgang  
Volume 21  
Volume  
Volumen

Donnerstag  
Thursday 04.04.1996  
Jeudi  
Jueves

Nummer  
Number 95  
Número  
Número

### Inhalt

### Contents

### Contenu

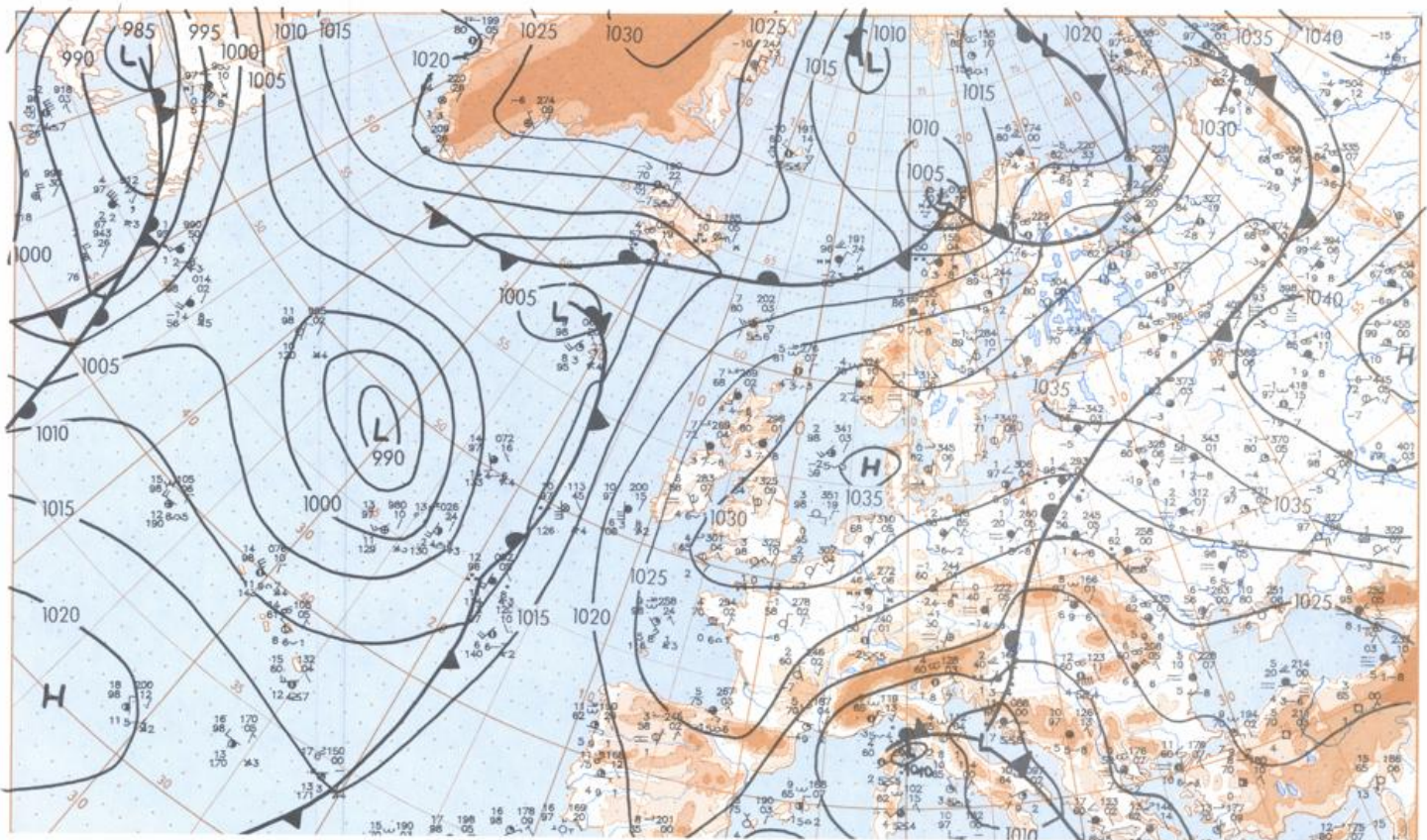
### Contenido

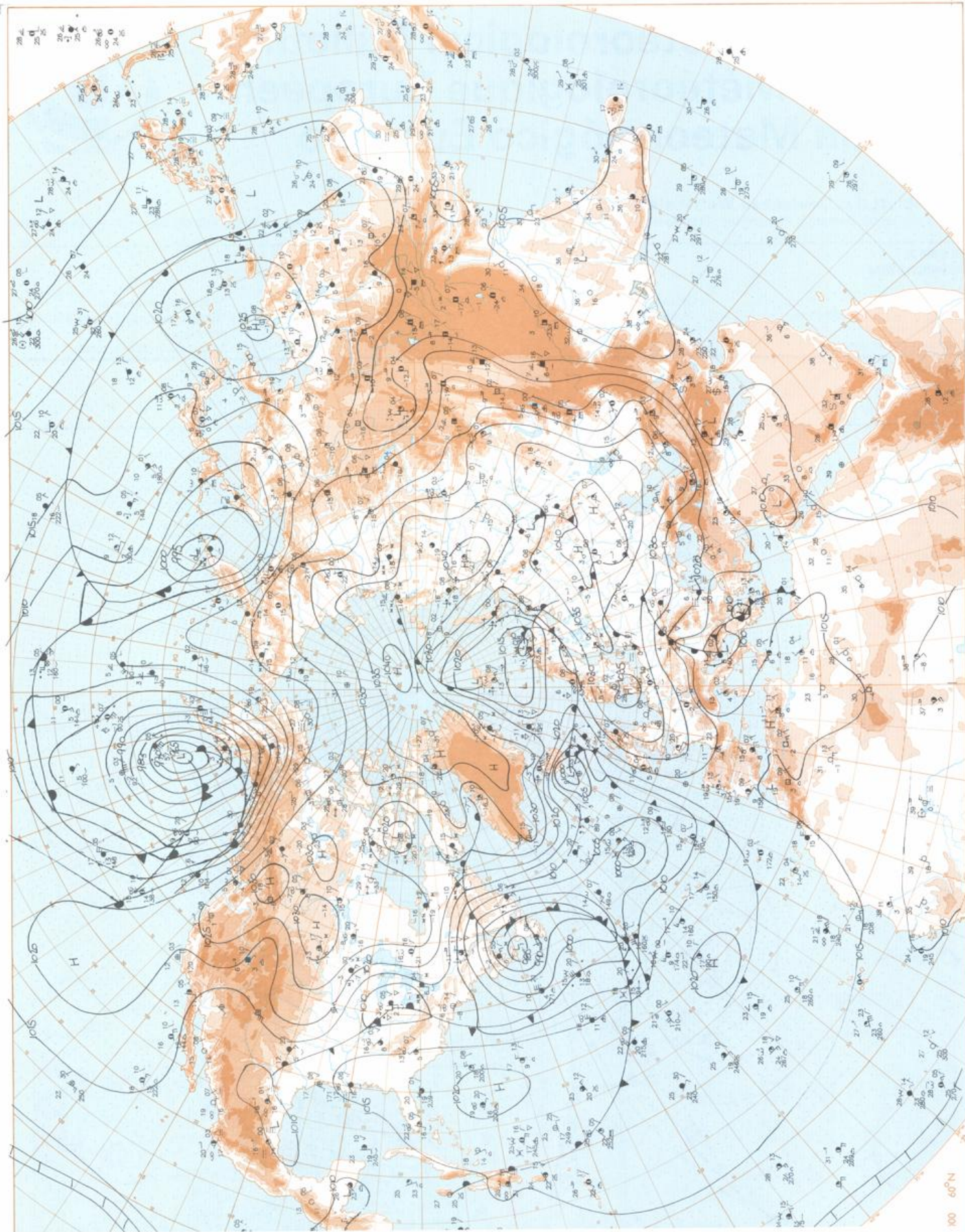
Bodenwetterkarte 00 UTC  
Bodenwetterkarte Nordhemisphäre 12 UTC  
500 - hPa-Fläche Nordhemisphäre 12 UTC  
200 - hPa-Fläche Nordhemisphäre 12 UTC  
100 - hPa-Fläche Nordhemisphäre 12 UTC  
850 - hPa 12 UTC, 700 hPa 12 UTC  
Relative Topographie 500/1000 hPa 12 UTC  
300 - hPa 12 UTC  
Aerologische Diagramme 12 UTC

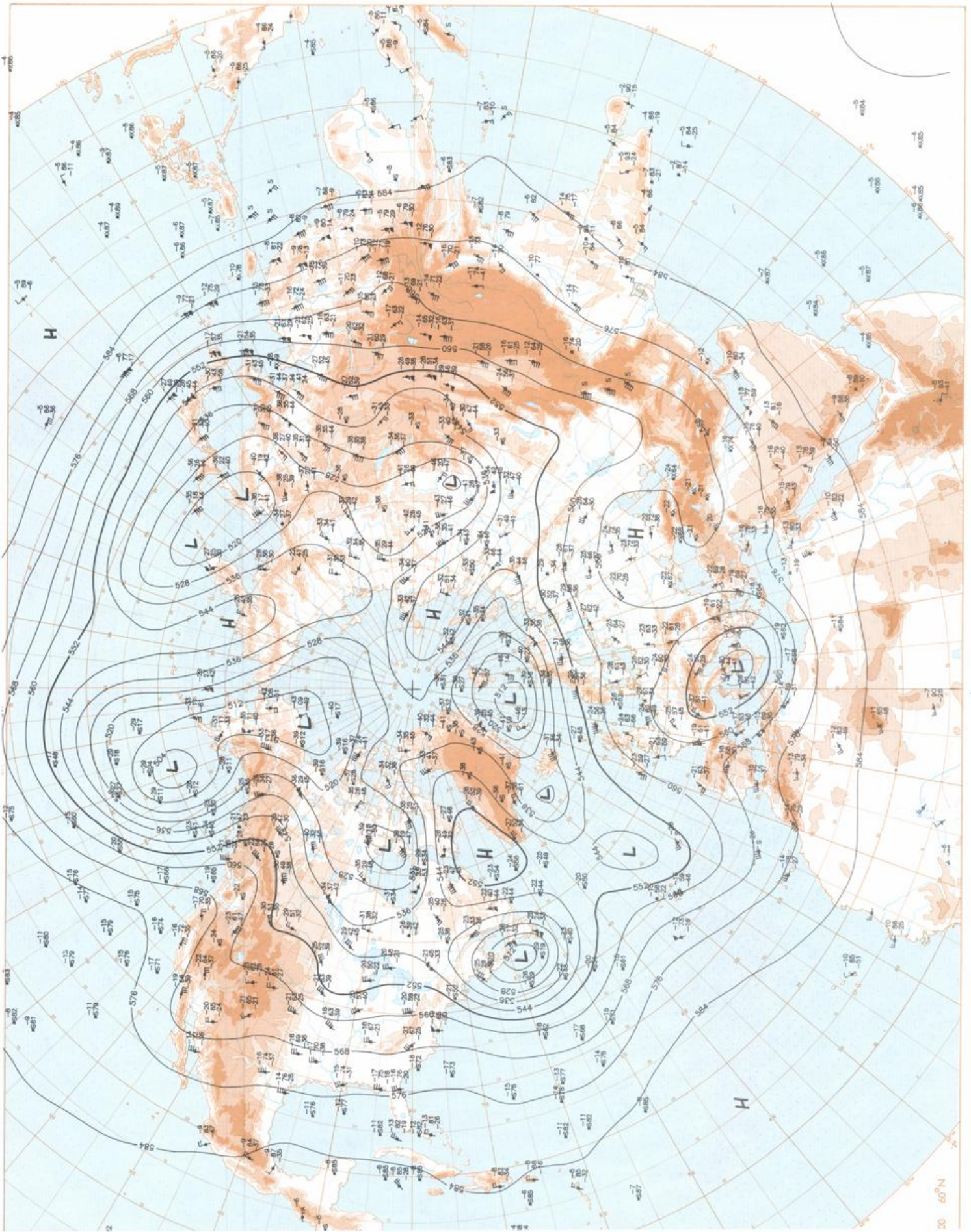
Surface chart 00 UTC  
Surface chart northern hemisphere 12 UTC  
500 hPa surface northern hemisphere 12 UTC  
200 hPa surface northern hemisphere 12 UTC  
100 hPa surface northern hemisphere 12 UTC  
850 hPa 12 UTC, 700 hPa 12 UTC  
Thickness chart 500/1000 hPa 12 UTC  
300 hPa 12 UTC  
Aerological diagrams 12 UTC

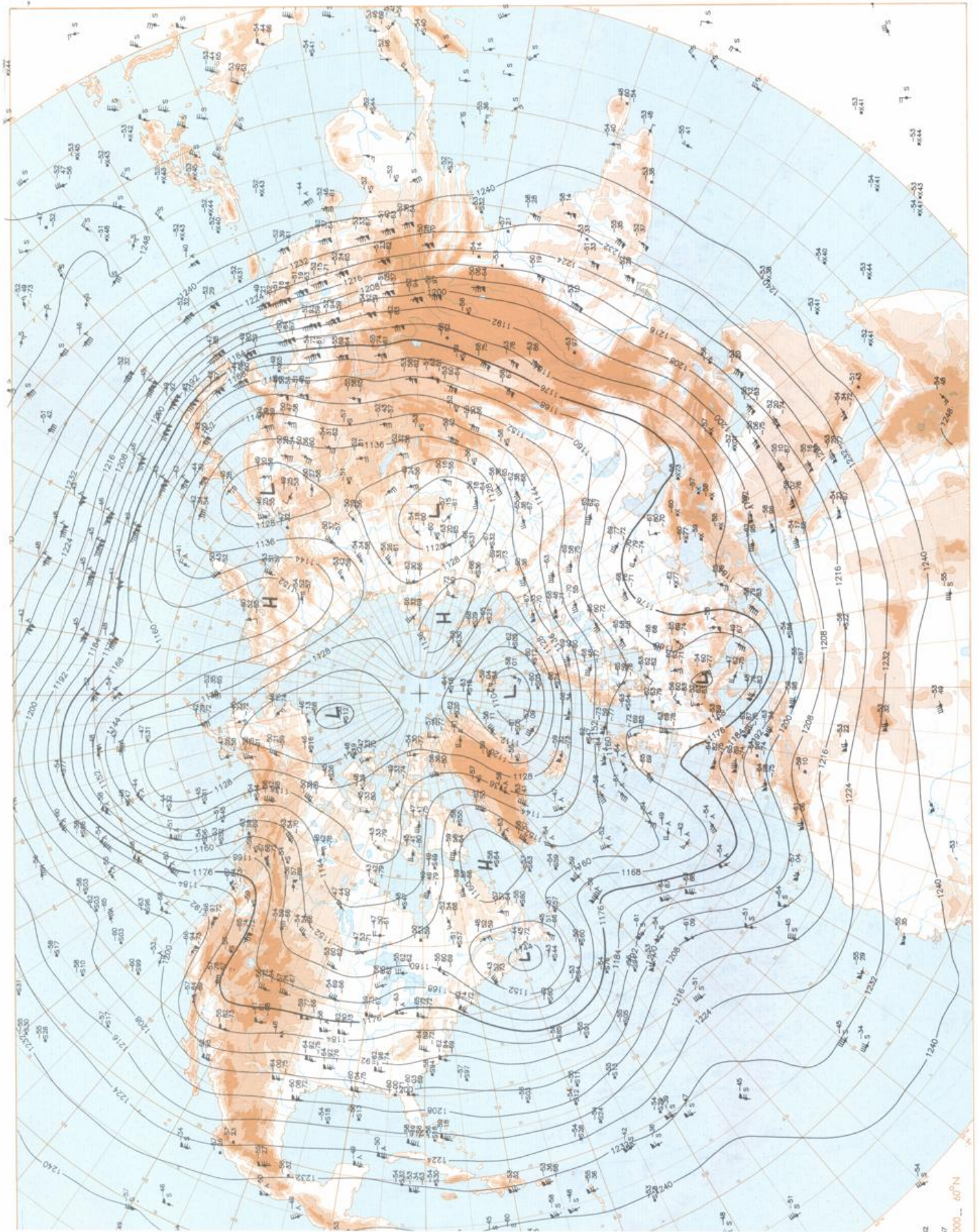
Carte de surface 00 UTC  
Carte de surface sur l'hémisphère nord 12 UTC  
Surface 500 hPa sur l'hémisphère nord 12 UTC  
Surface 200 hPa sur l'hémisphère nord 12 UTC  
Surface 100 hPa sur l'hémisphère nord 12 UTC  
850 hPa 12 UTC, 700 hPa 12 UTC  
Carte d'épaisseur 500/1000 hPa 12 UTC  
300 hPa 12 UTC  
Diagrammes aérologiques 12 UTC

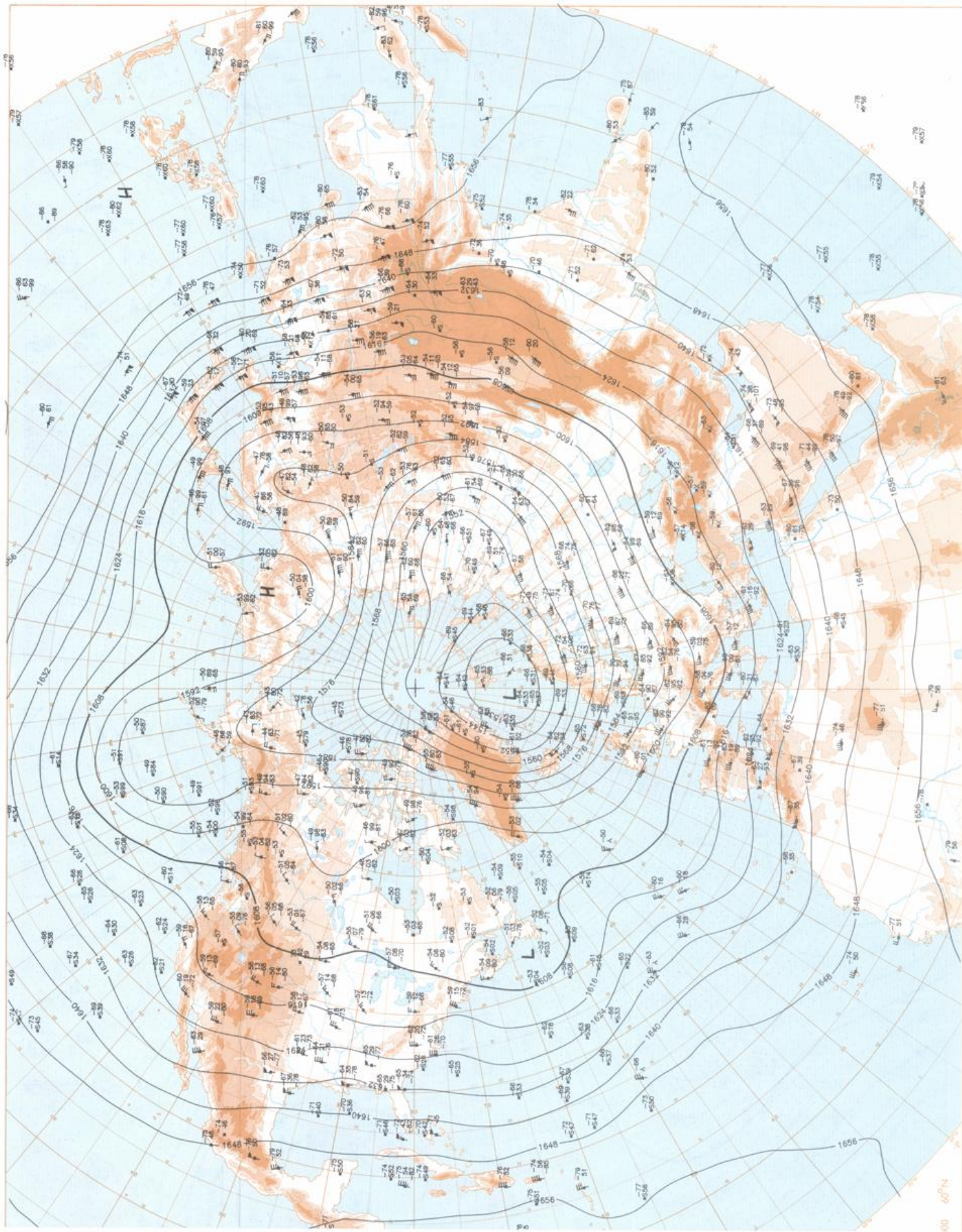
Análisis superficie 00 UTC  
Análisis en superficie hemisferio norte 12 UTC  
Topografía de la superficie de 500 hPa hemisferio norte 12 UTC  
Topografía de la superficie de 200 hPa hemisferio norte 12 UTC  
Topografía de la superficie de 100 hPa hemisferio norte 12 UTC  
850 hPa 12 UTC, 700 hPa 12 UTC  
Relativa 500/1000 hPa 12 UTC  
300 hPa 12 UTC  
Diagramas aerológicos 12 UTC



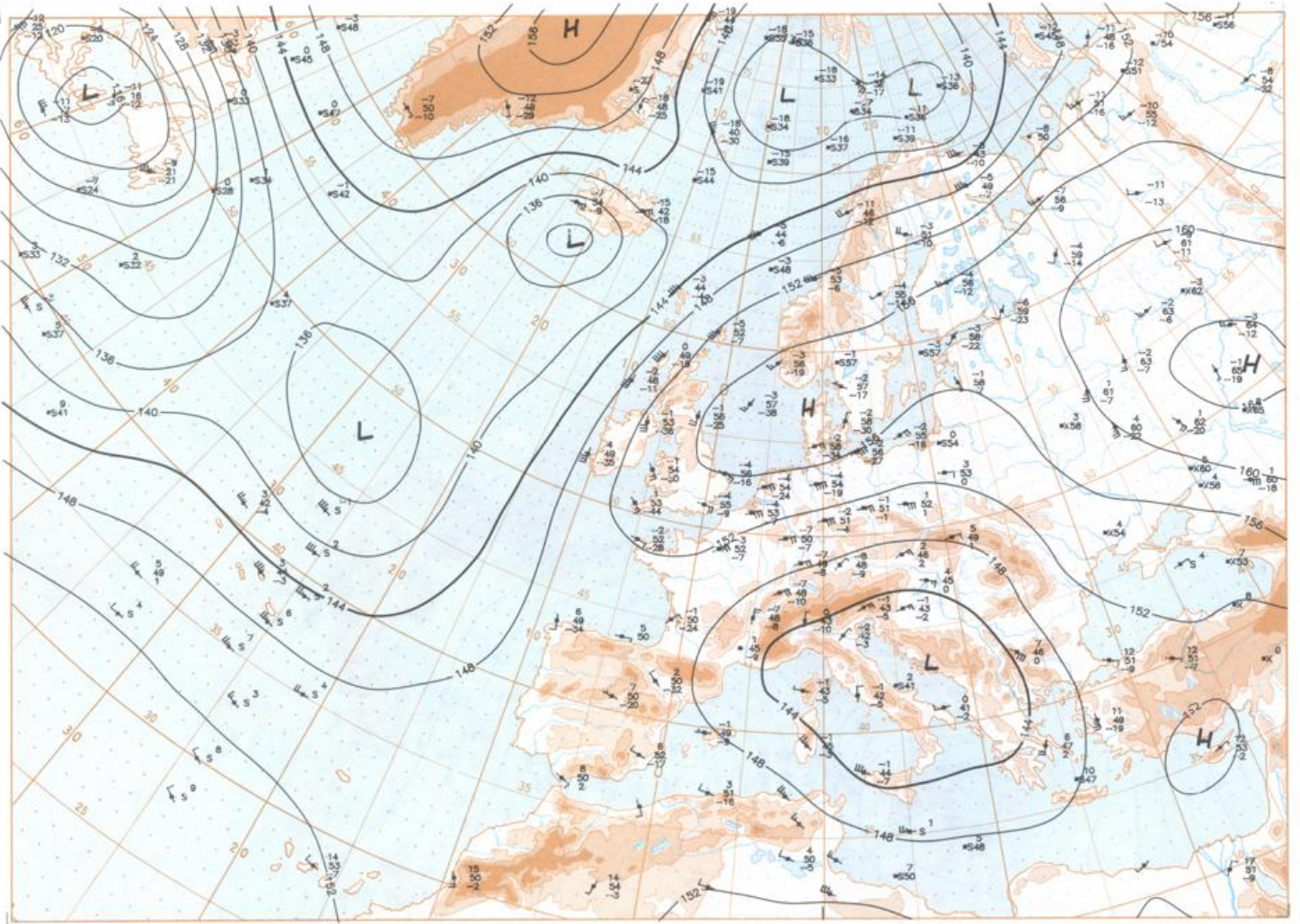






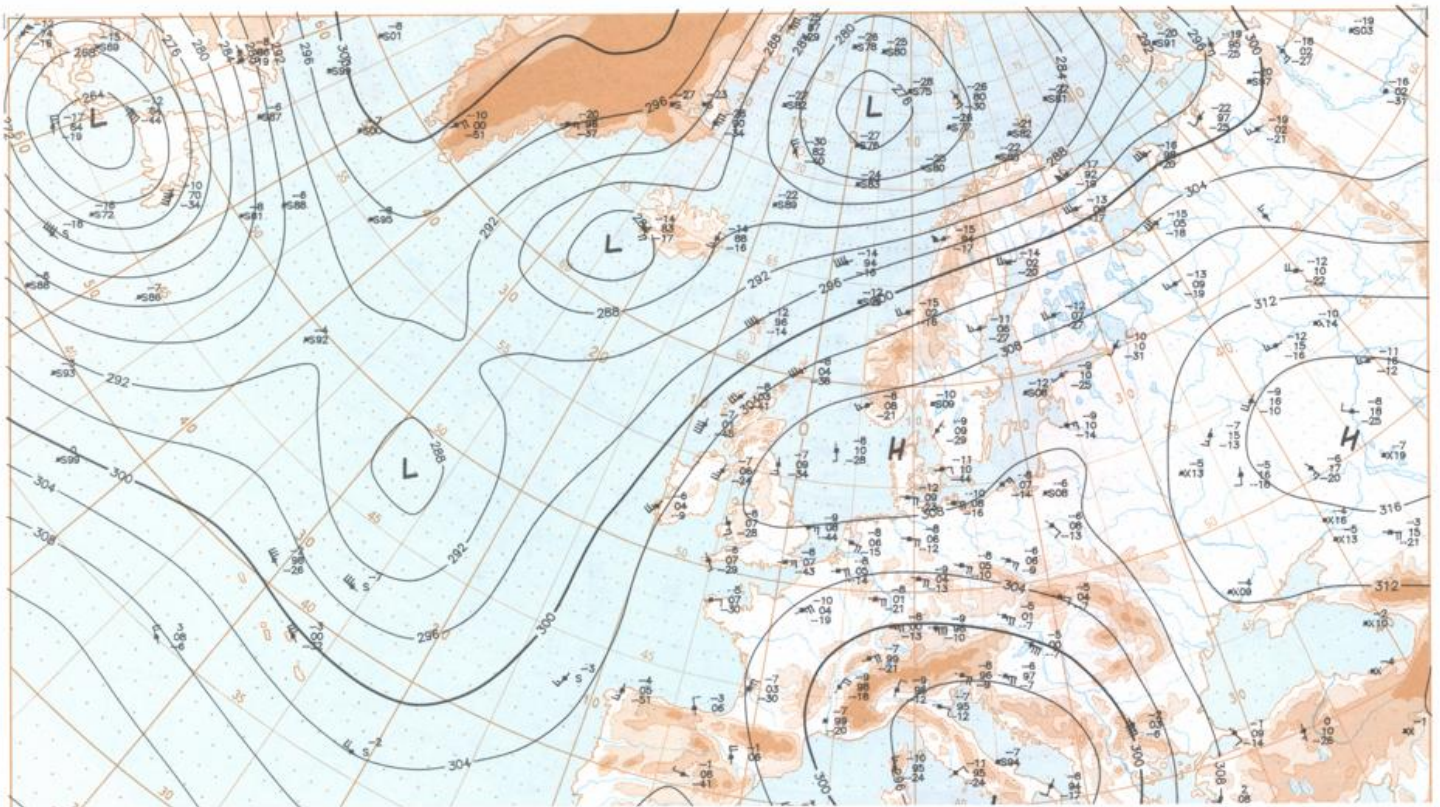


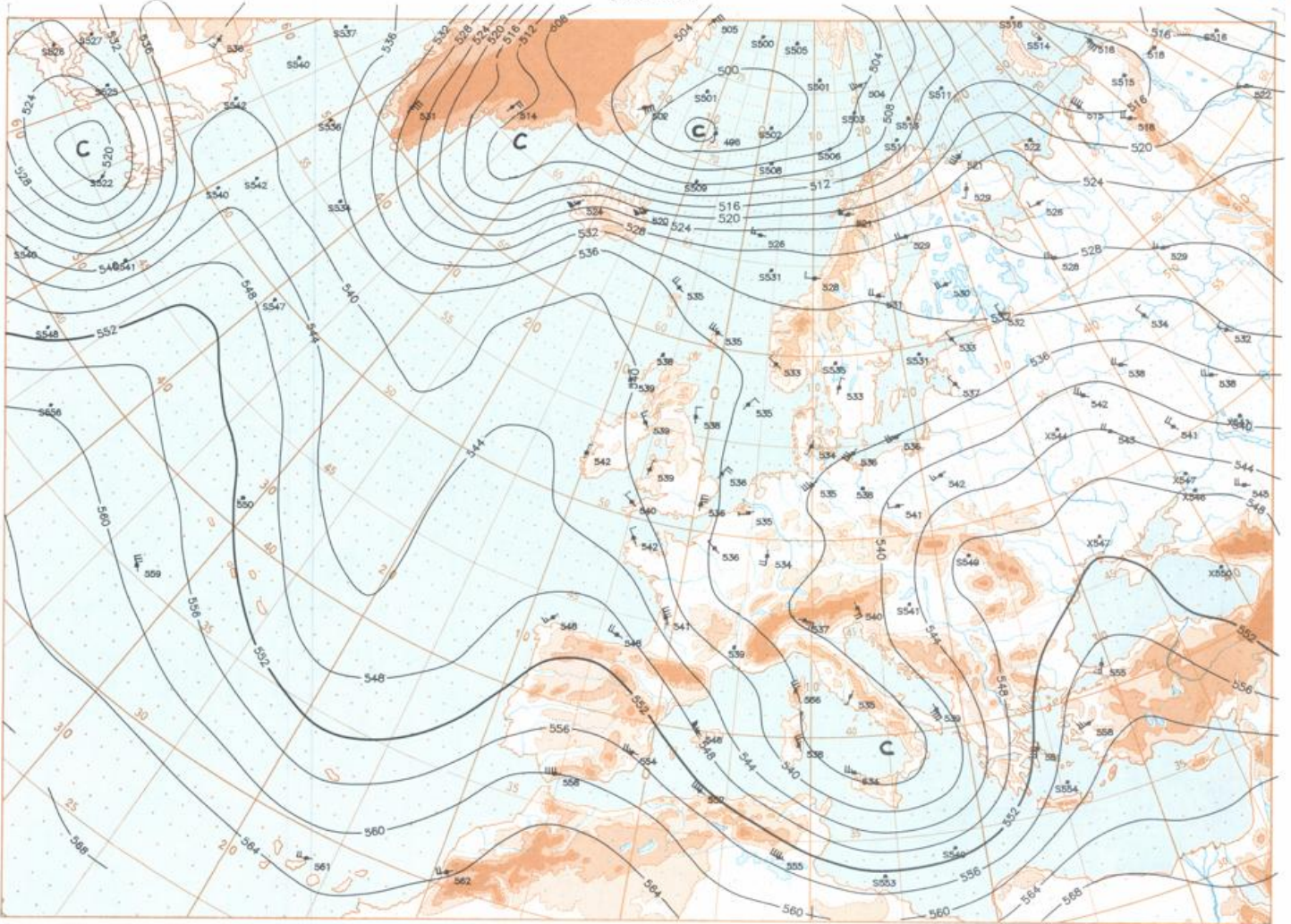
04.04.1996



Stereogr. proj. - 1:20 000 000 in 60°N

850 hPa 12 UTC





Stereogr. proj. 1:20 000 000 in 60°N

500/1000 hPa 12 UTC

