

Europäischer Wetterbericht European Meteorological Bulletin Bulletin Météorologique Européen Boletín Meteorológico Europeo



Amtsblatt des Deutschen Wetterdienstes

Druck und Verlag: Deutscher Wetterdienst, Frankfurter Straße 135, 63067 Offenbach · Postanschrift: 63004 Offenbach, Postfach 100465, Telefon: (0 69) 80 62-22 84

D 6168 A
ISSN 0341-2970

Erscheint täglich
Bezugspreis jährlich DM 456.–
zuzügl. Porto
Nachdruck nicht gestattet

Issued daily
Yearly Price DM 456.–
plus postage
All rights reserved

Publié quotidiennement
Prix annuel DM 456.–
plus port
Reproduction interdite

Se publica diariamente
Precio de suscripción anual DM 456.–
plus porte
Se prohíbe la reproducción

Jahrgang
Volume 22
Volume
Volumen

Samstag
Saturday
Samedi
Sábado
29.11.1997

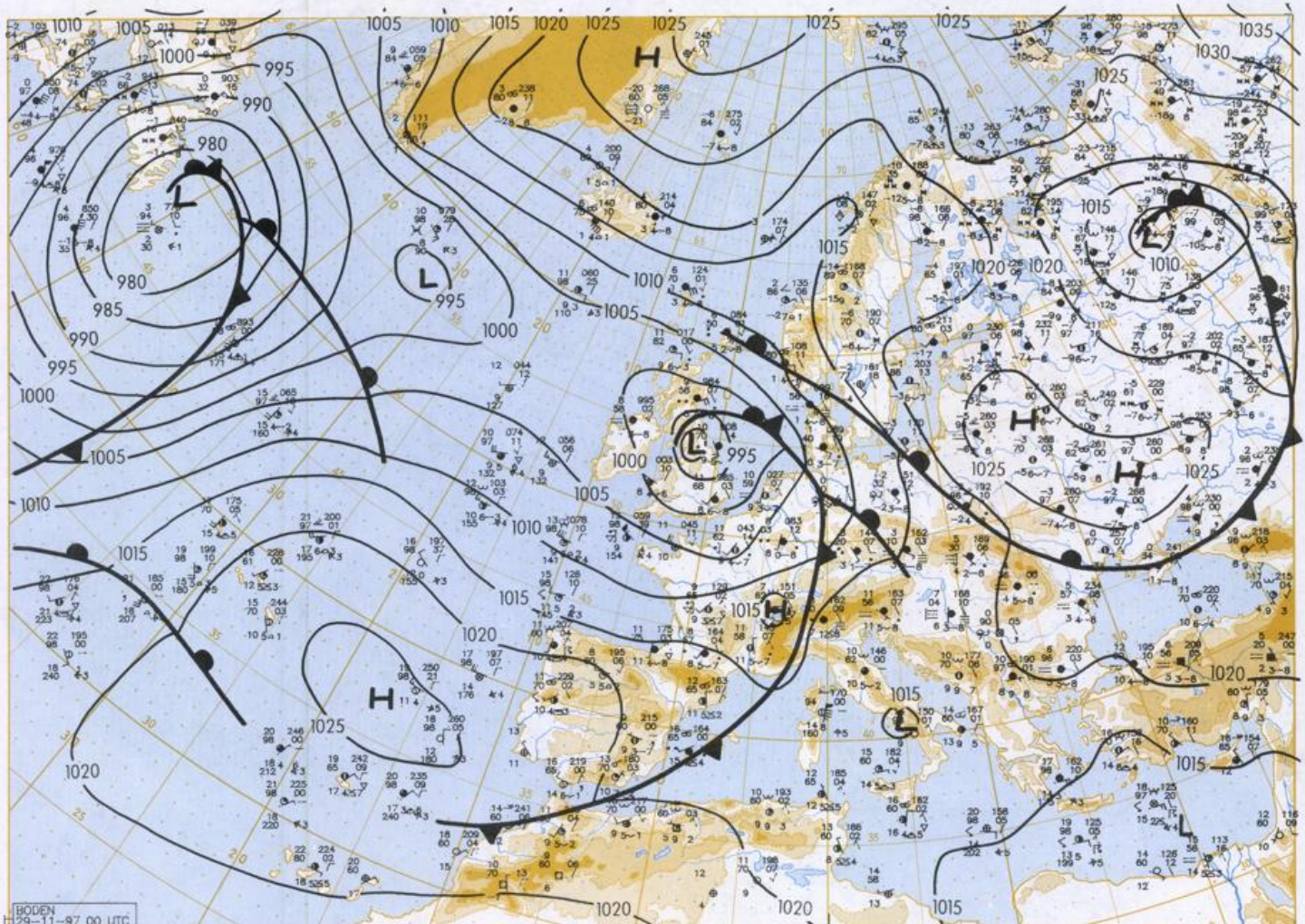
Nummer
Number 333
Número
Número

Inhalt
Bodenwetterkarte 00 UTC
Bodenwetterkarte Nordhemisphäre 12 UTC
500 - hPa-Fläche Nordhemisphäre 12 UTC
200 - hPa-Fläche Nordhemisphäre 12 UTC
100 - hPa-Fläche Nordhemisphäre 12 UTC
850 - hPa 12 UTC, 700 hPa 12 UTC
Relative Topographie 500/1000 hPa 12 UTC
300 - hPa 12 UTC
Aerologische Diagramme 12 UTC

Contents
Surface chart 00 UTC
Surface chart northern hemisphere 12 UTC
500 hPa surface northern hemisphere 12 UTC
200 hPa surface northern hemisphere 12 UTC
100 hPa surface northern hemisphere 12 UTC
850 hPa 12 UTC, 700 hPa 12 UTC
Thickness chart 500/1000 hPa 12 UTC
300 hPa 12 UTC
Aerological diagrams 12 UTC

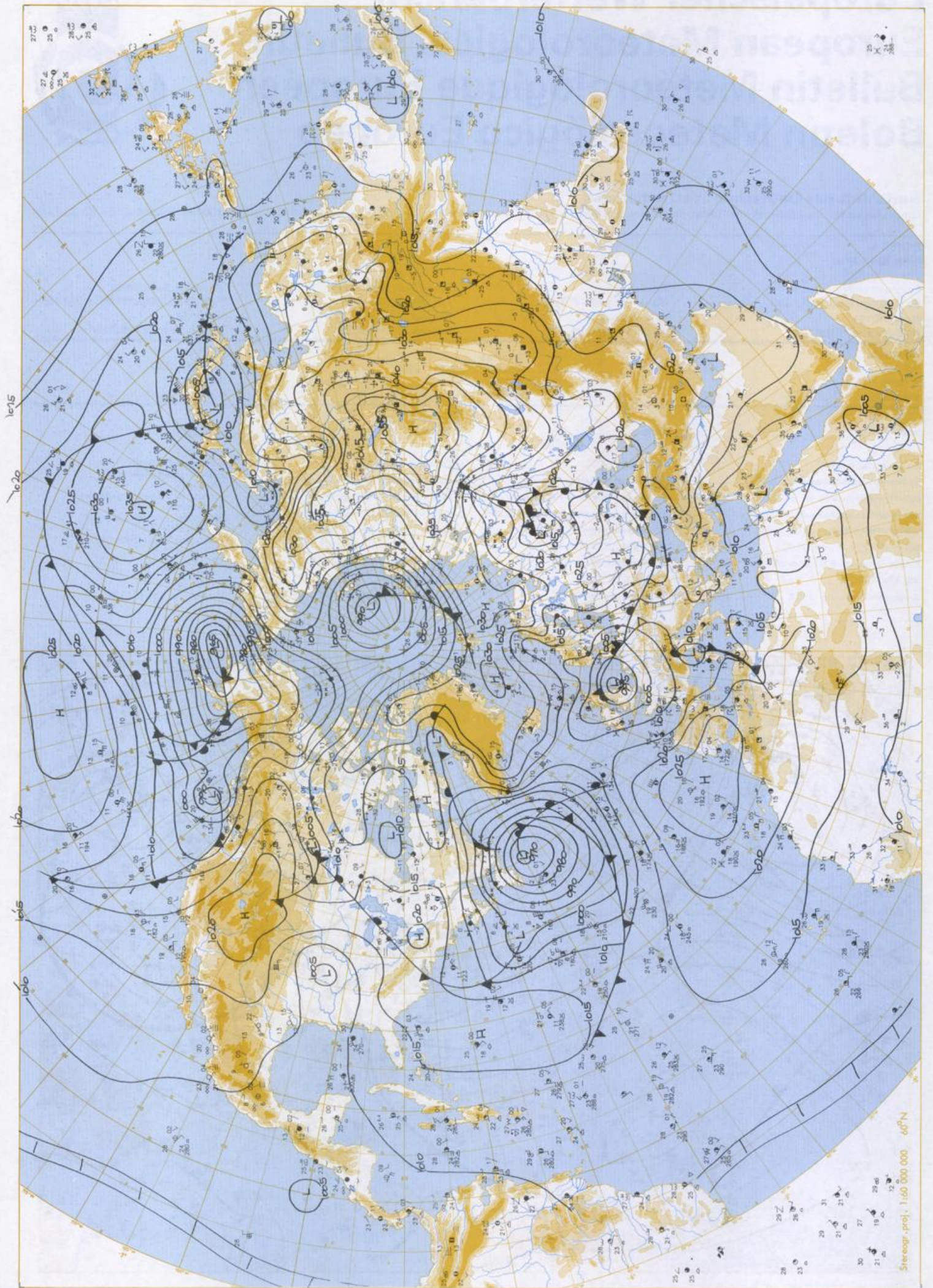
Contenu
Carte de surface 00 UTC
Carte de surface sur l'hémisphère nord 12 UTC
Surface 500 hPa sur l'hémisphère nord 12 UTC
Surface 200 hPa sur l'hémisphère nord 12 UTC
Surface 100 hPa sur l'hémisphère nord 12 UTC
850 hPa 12 UTC, 700 hPa 12 UTC
Carte d'épaisseur 500/1000 hPa 12 UTC
300 hPa 12 UTC
Diagrammes aérologiques 12 UTC

Contenido
Análisis superficie 00 UTC
Análisis en superficie hemisferio norte 12 UTC
Topografía de la superficie de 500 hPa hemisferio norte 12 UTC
Topografía de la superficie de 200 hPa hemisferio norte 12 UTC
Topografía de la superficie de 100 hPa hemisferio norte 12 UTC
850 hPa 12 UTC, 700 hPa 12 UTC
Relativa 500/1000 hPa 12 UTC
300 hPa 12 UTC
Diagramas aerológicos 12 UTC



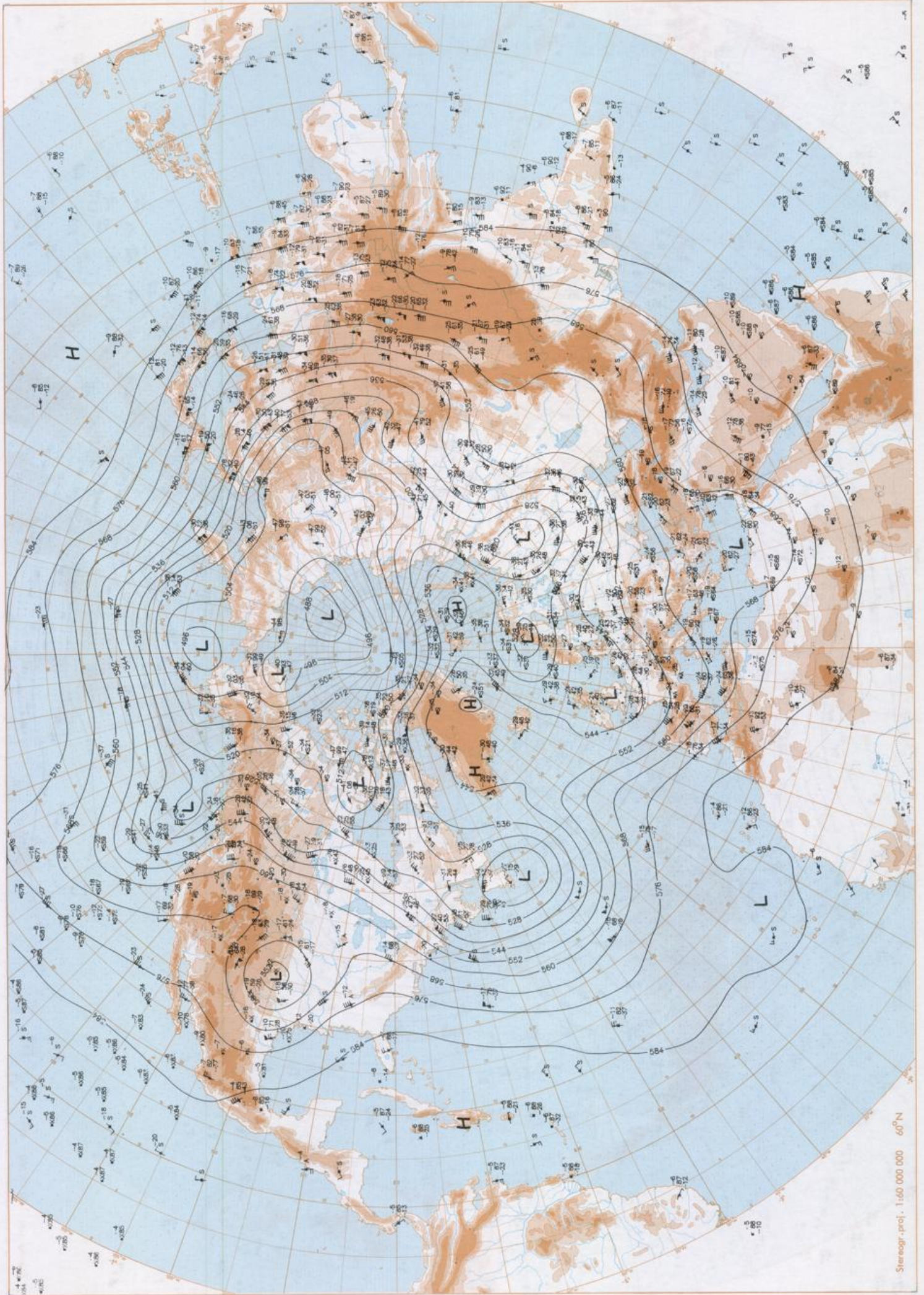
BODEN
29-11-97 00 UTC
Stereogr. proj. 1:30 000 000 60°N

Surface chart 00 UTC



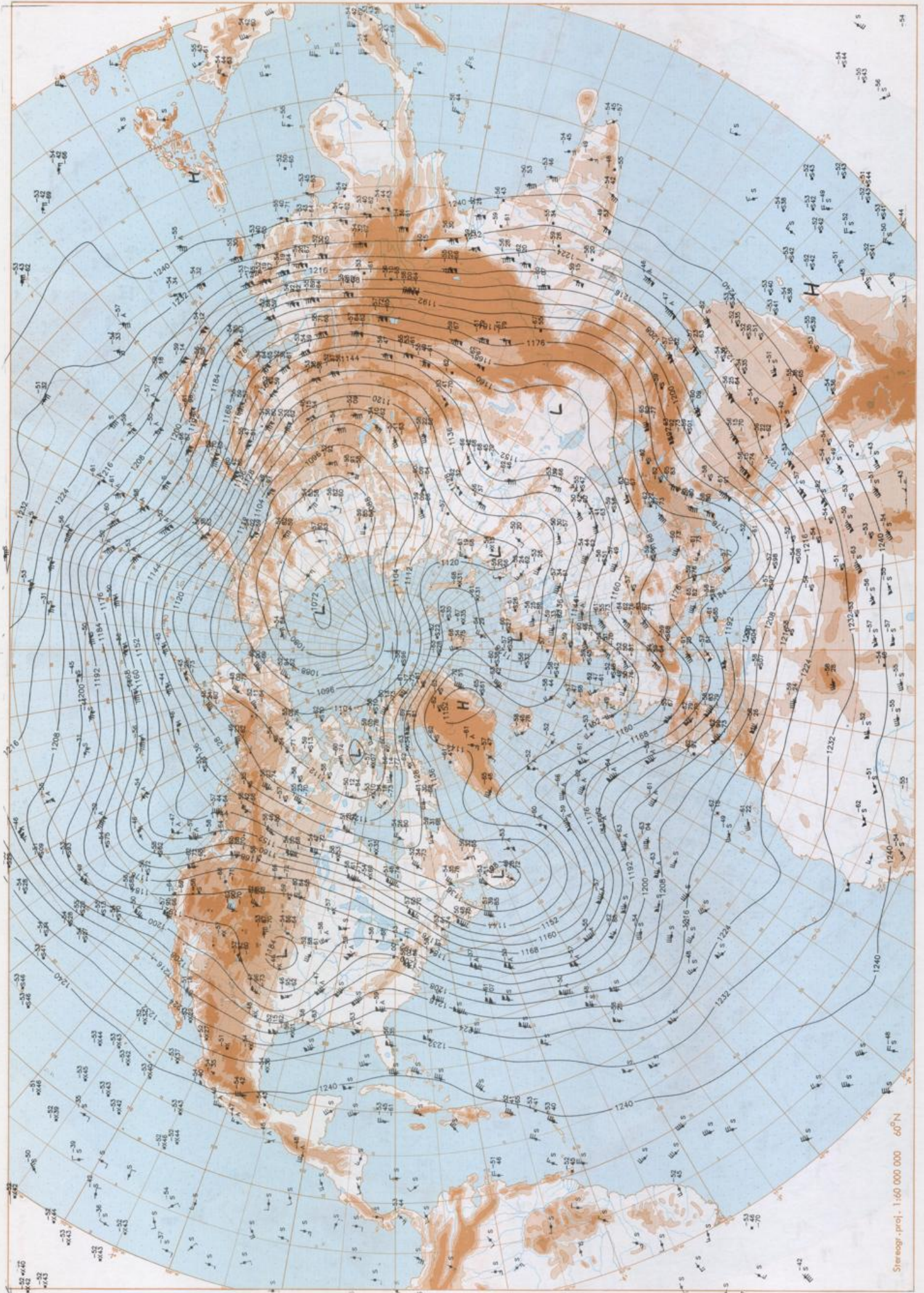
Surface chart 12 UTC

Stereogr. pol. 1:60 000 000 46°N

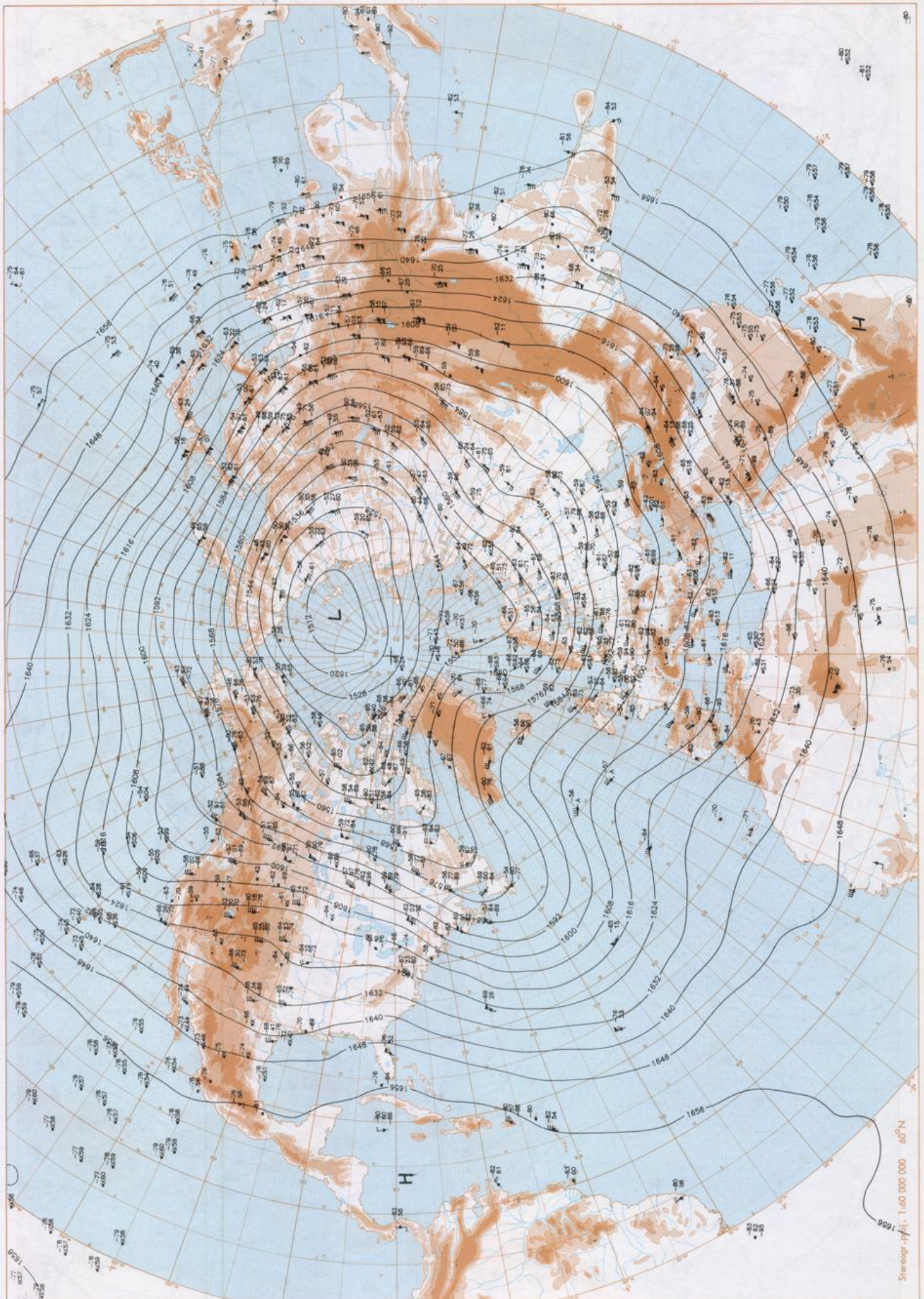


500 hPa 12 UTC

Stereogr. proj. 1:60 000 000 60°N

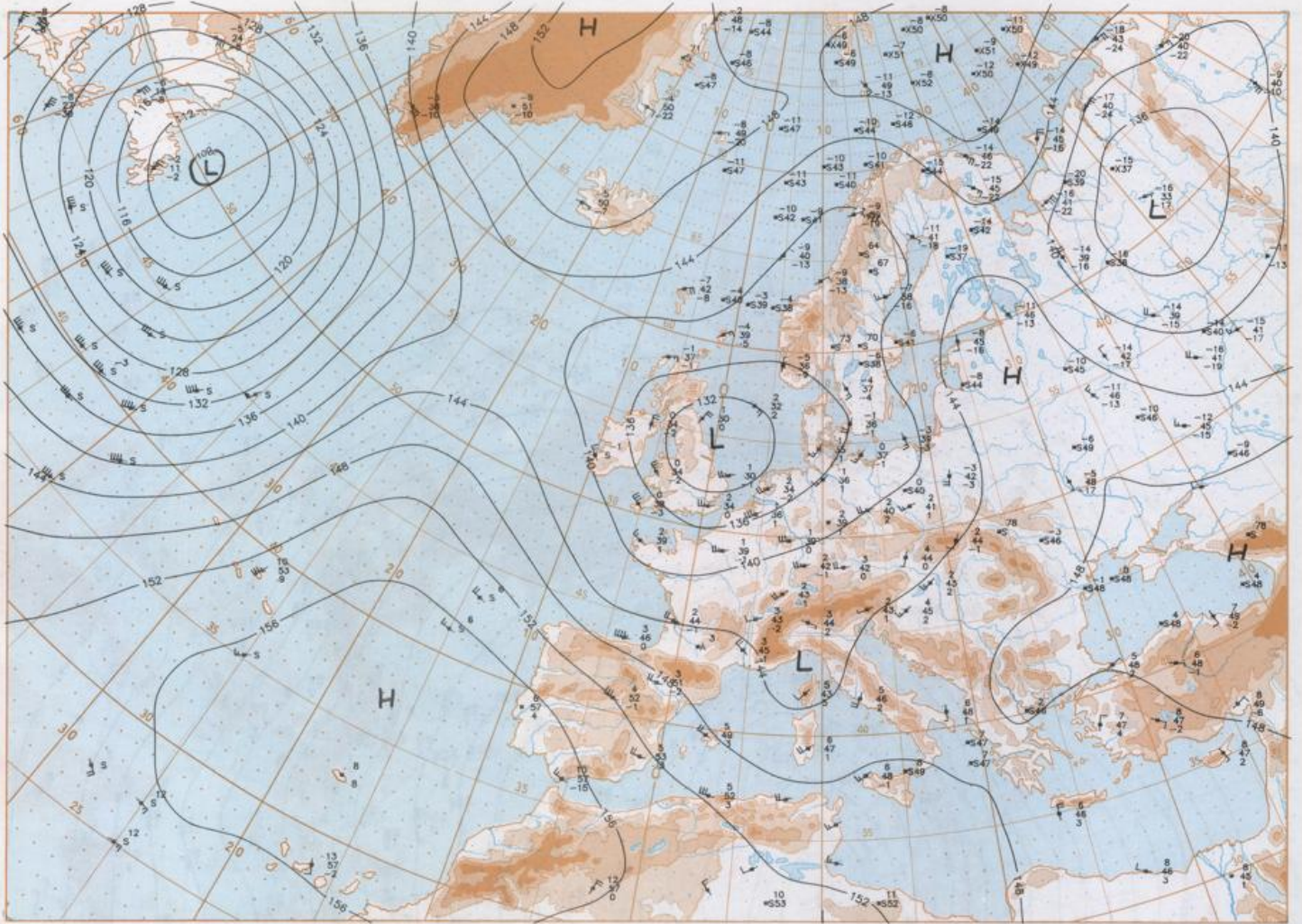


200 hPa 12 UTC



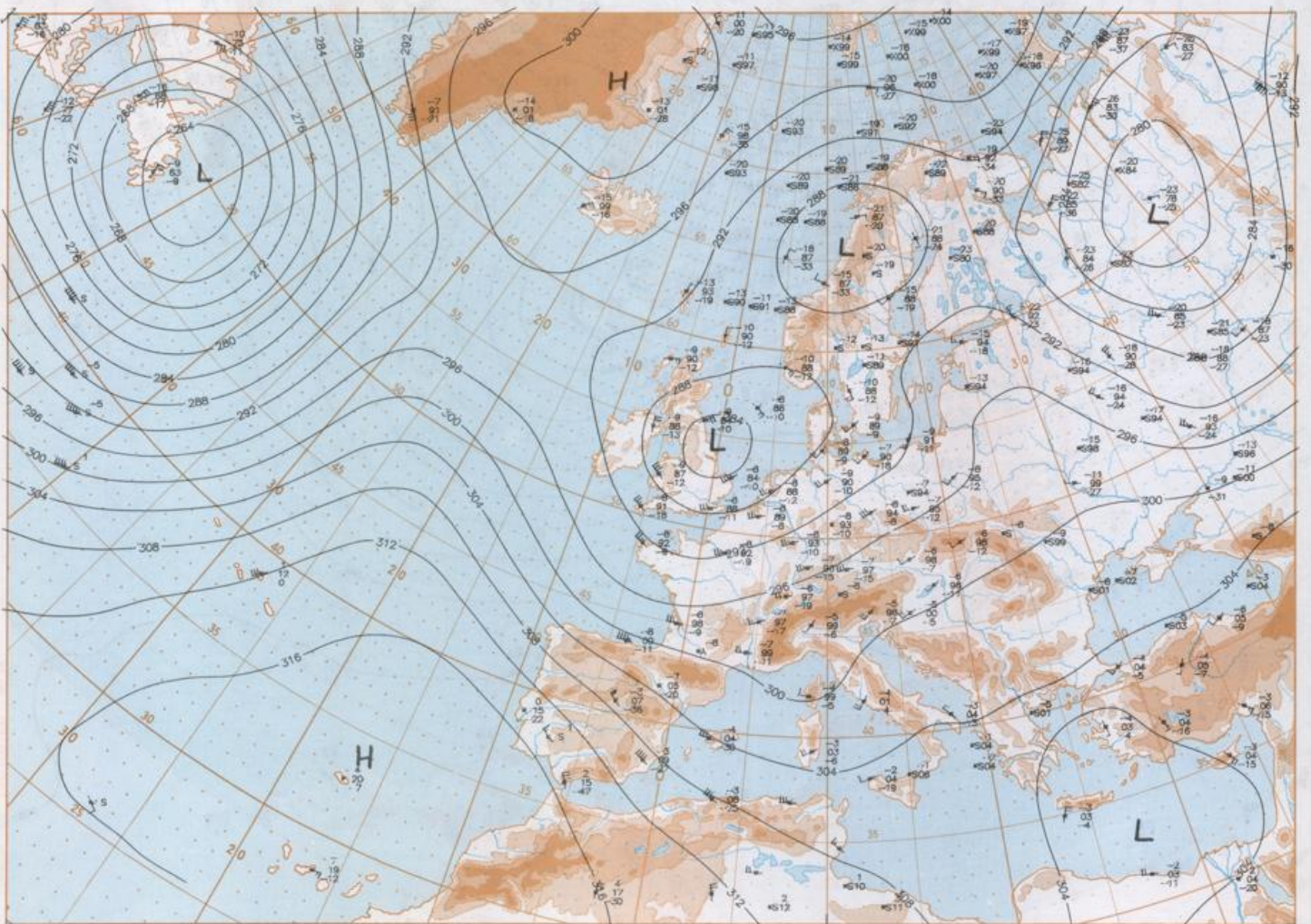
100 hPa 12 UTC

Stereogr. proj. 1:60 000 000 60°N

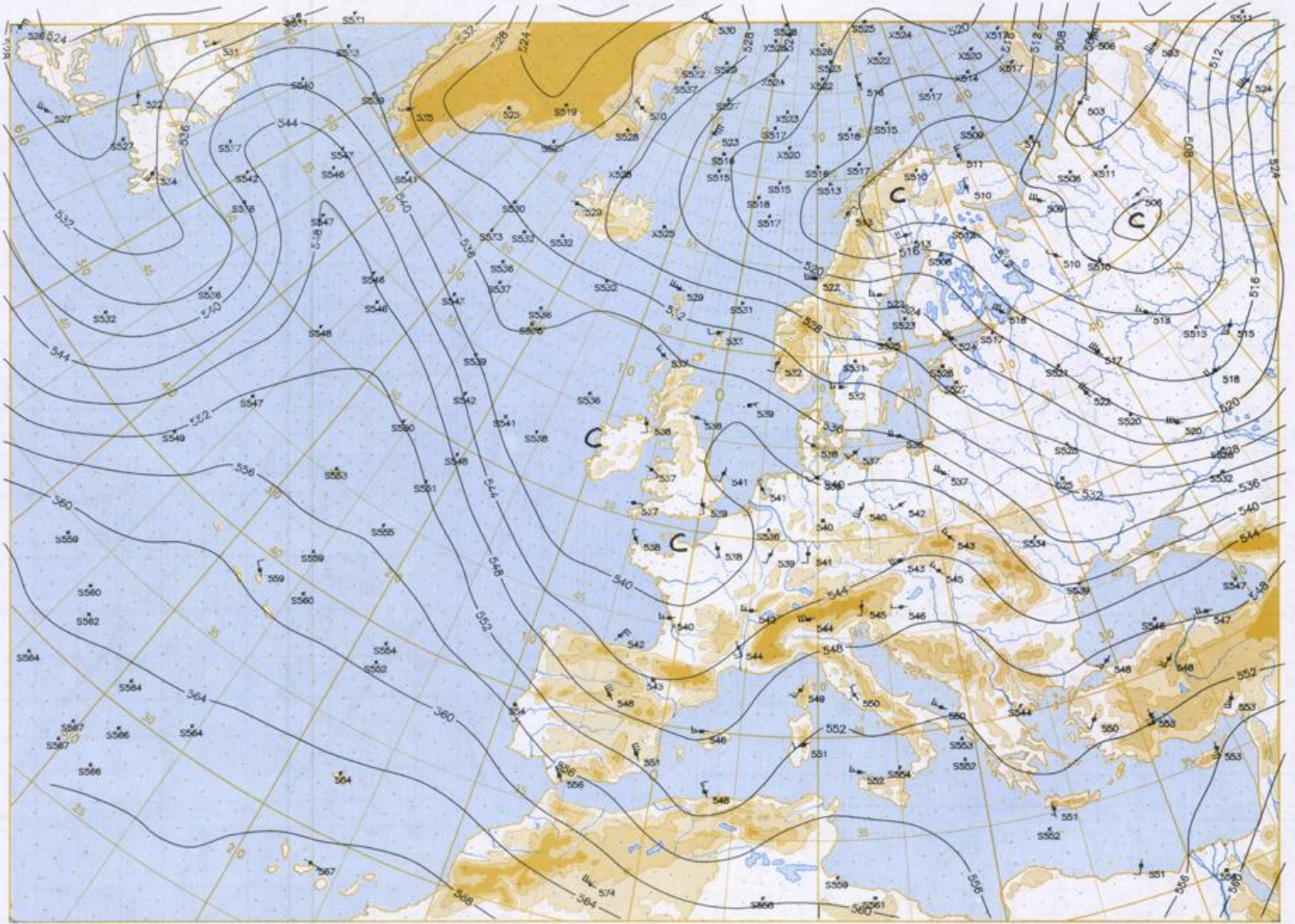


Stereogr. proj. 1:30 000 000 in 60°N

850 hPa 12 UTC

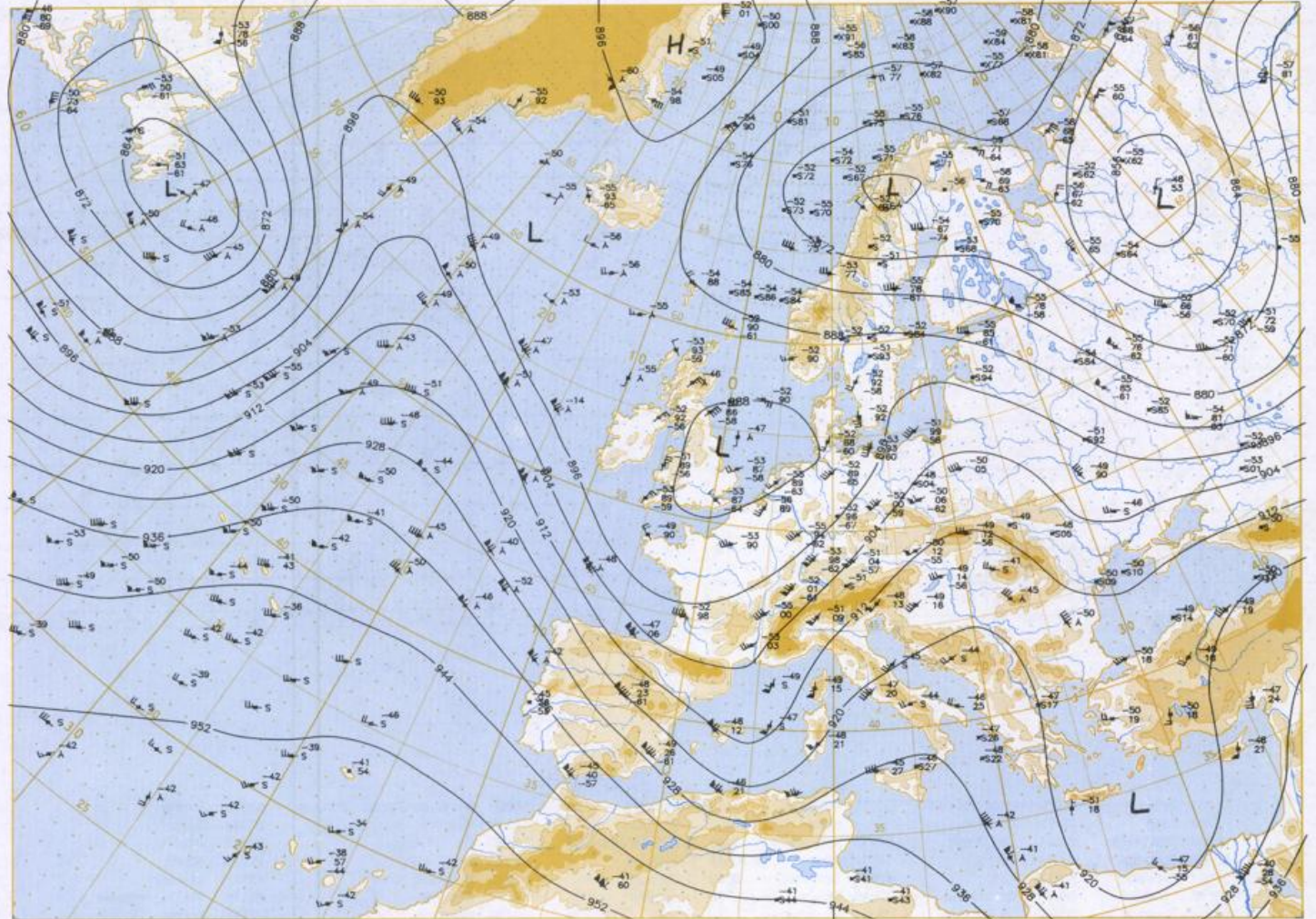


700 hPa 12 UTC



Stereogr. proj., 1:30 000 000 in 60°N

500/1000 hPa 12 UTC



300 hPa 12 UTC

