

# Europäischer Wetterbericht European Meteorological Bulletin Bulletin Météorologique Européen Boletín Meteorológico Europeo



Amtsblatt des Deutschen Wetterdienstes

Druck und Verlag: Deutscher Wetterdienst, Frankfurter Straße 135, 63067 Offenbach. Postanschrift: 63004 Offenbach, Postfach 100465, Telefon: (0 69) 80 62-42 83

D 6168 A  
ISSN 0341-2970

Erscheint täglich  
Bezugspreis jährlich DM 456.–  
zuzügl. Porto  
Nachdruck nicht gestattet

Issued daily  
Yearly Price DM 456.–  
plus postage  
All rights reserved

Publié quotidiennement  
Prix annuel DM 456.–  
plus port  
Reproduction interdite

Se publica diariamente  
Precio de suscripción anual DM 456.–  
plus porte  
Se prohíbe la reproducción

Jahrgang  
Volume 26  
Volume  
Volumen

Donnerstag  
Thursday 20.09.2001  
Jeudi  
Jueves

Nummer  
Number 263  
Número  
Número

**Inhalt**

Bodenwetterkarte 00 UTC  
Bodenwetterkarte Nordhemisphäre 12 UTC  
500 - hPa-Fläche Nordhemisphäre 12 UTC  
200 - hPa-Fläche Nordhemisphäre 12 UTC  
100 - hPa-Fläche Nordhemisphäre 12 UTC  
850 - hPa 12 UTC, 700 hPa 12 UTC  
Relative Topographie 500/1000 hPa 12 UTC  
300 - hPa 12 UTC  
Aerologische Diagramme 12 UTC

**Contents**

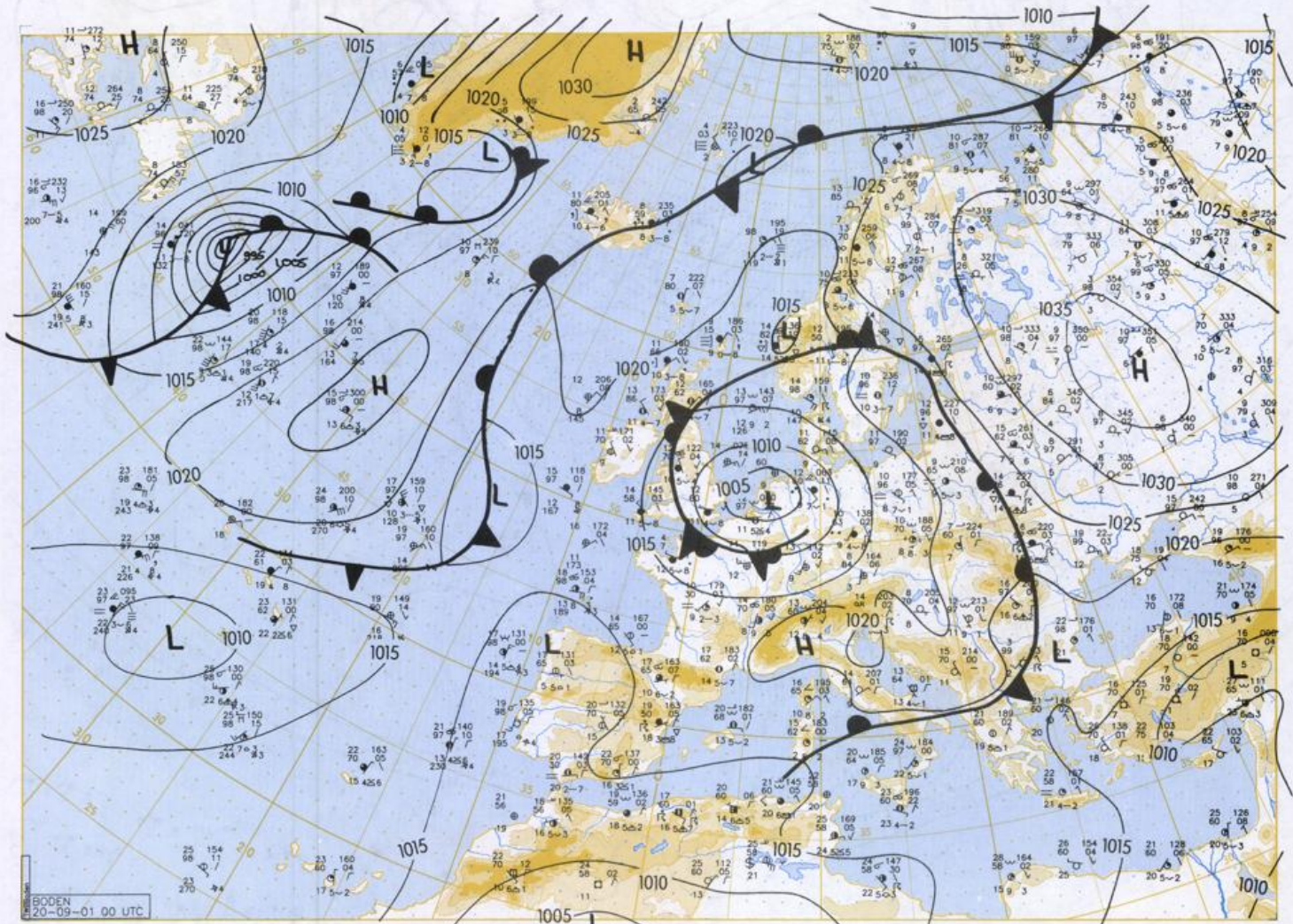
Surface chart 00 UTC  
Surface chart northern hemisphere 12 UTC  
500 hPa surface northern hemisphere 12 UTC  
200 hPa surface northern hemisphere 12 UTC  
100 hPa surface northern hemisphere 12 UTC  
850 hPa 12 UTC, 700 hPa 12 UTC  
Thickness chart 500/1000 hPa 12 UTC  
300 hPa 12 UTC  
Aerological diagrams 12 UTC

**Contenu**

Carte de surface 00 UTC  
Carte de surface sur l'hémisphère nord 12 UTC  
Surface 500 hPa sur l'hémisphère nord 12 UTC  
Surface 200 hPa sur l'hémisphère nord 12 UTC  
Surface 100 hPa sur l'hémisphère nord 12 UTC  
850 hPa 12 UTC, 700 hPa 12 UTC  
Carte d'épaisseur 500/1000 hPa 12 UTC  
300 hPa 12 UTC  
Diagrammes aérológicos 12 UTC

**Contenido**

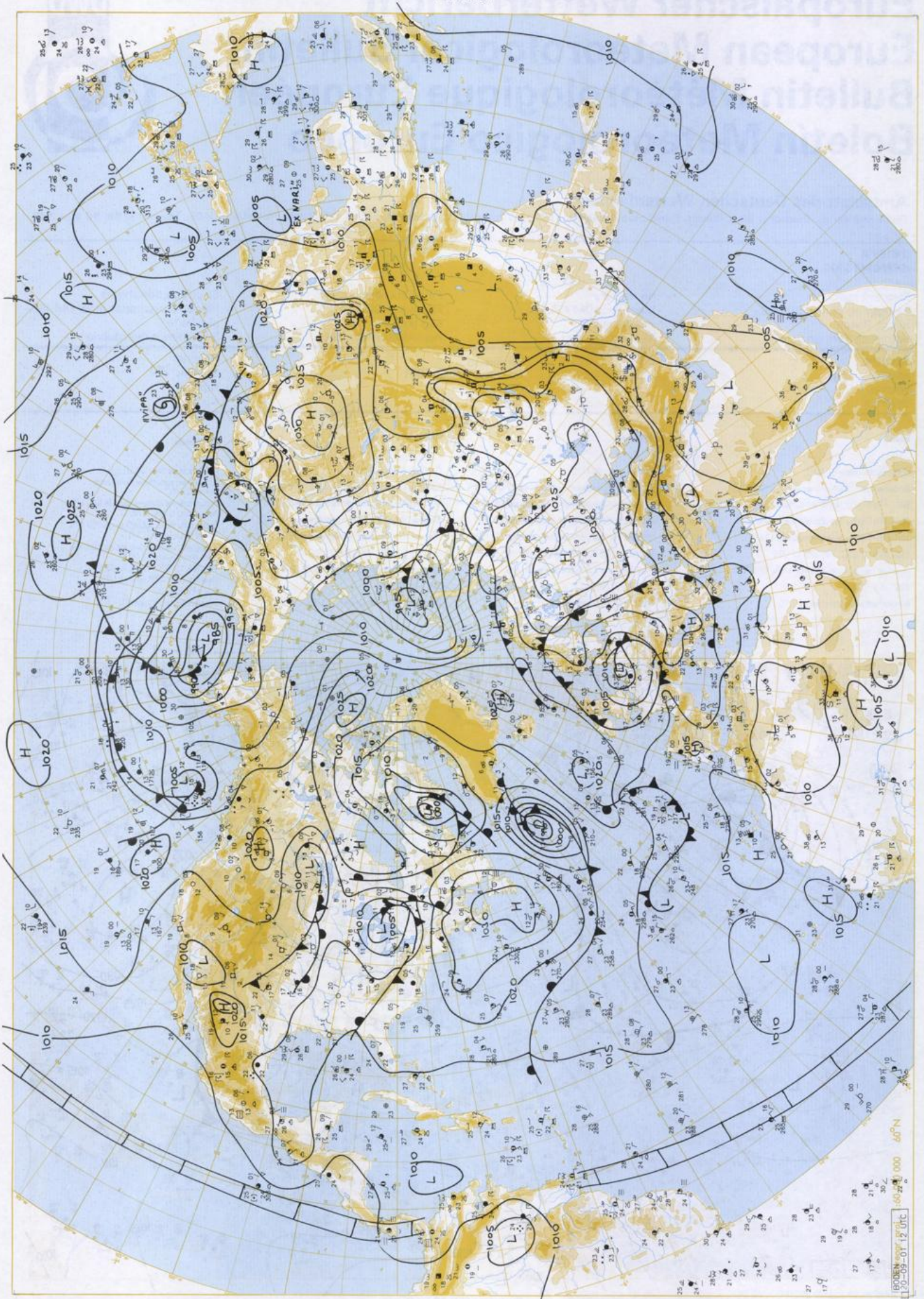
Análisis superficie 00 UTC  
Análisis en superficie hemisferio norte 12 UTC  
Topografía de la superficie de 500 hPa hemisferio norte 12 UTC  
Topografía de la superficie de 200 hPa hemisferio norte 12 UTC  
Topografía de la superficie de 100 hPa hemisferio norte 12 UTC  
850 hPa 12 UTC, 700 hPa 12 UTC  
Relativa 500/1000 hPa 12 UTC  
300 hPa 12 UTC  
Diagramas aerológicos 12 UTC



BODEN  
20-09-01 00 UTC

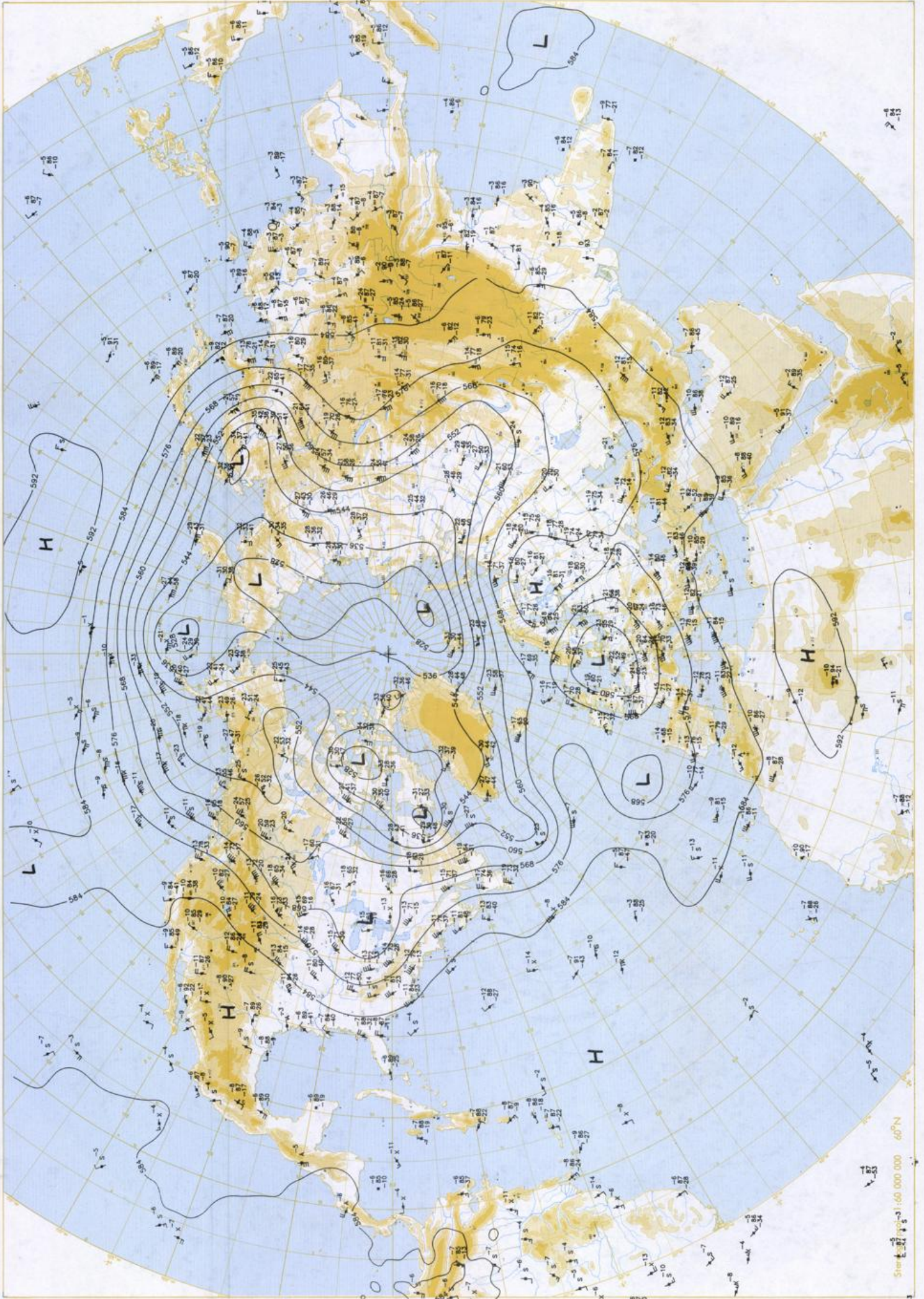
Stereogr. proj. 1:30 000 000 60°N

Surface chart 00 UTC



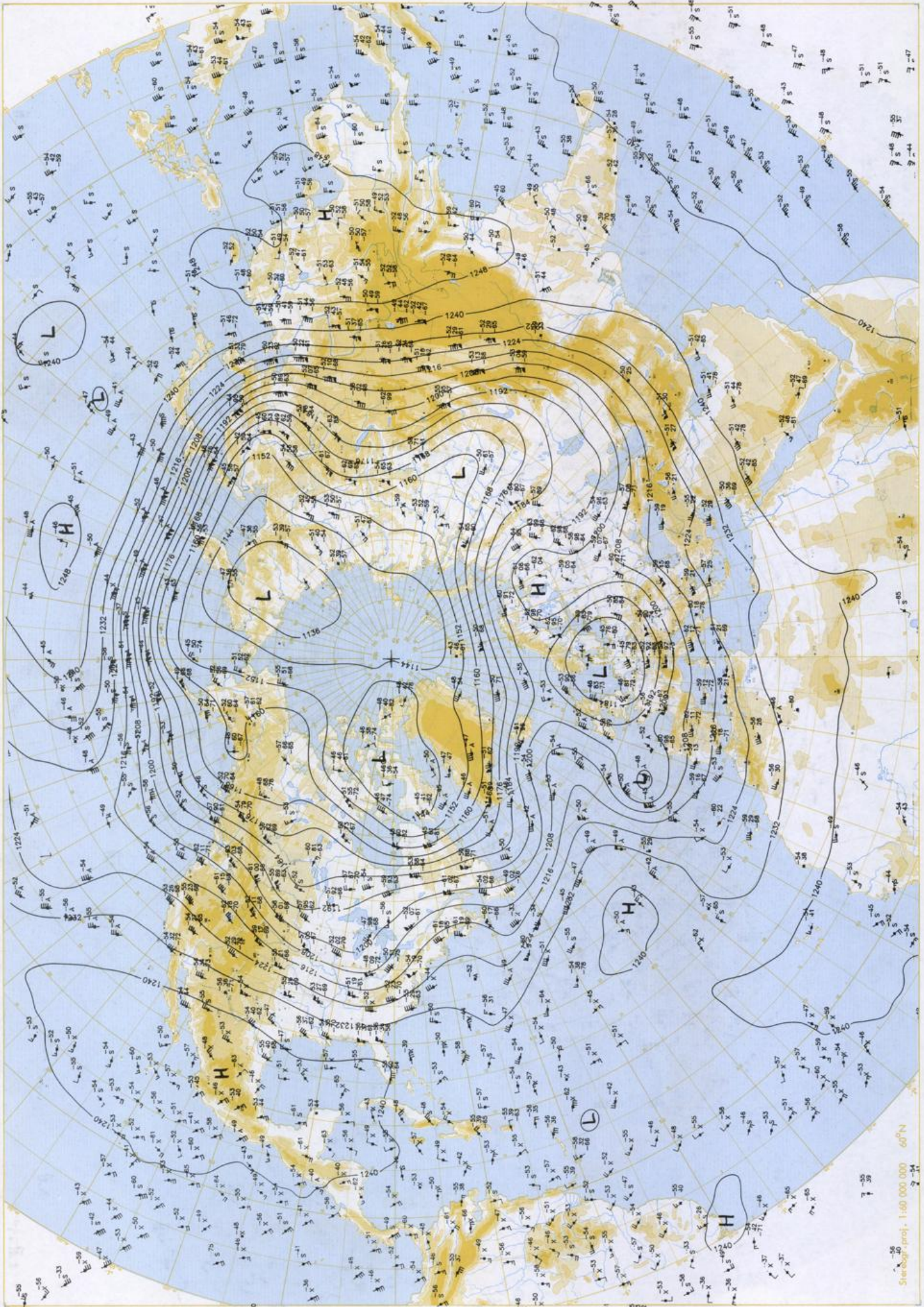
Surface chart 12 UTC

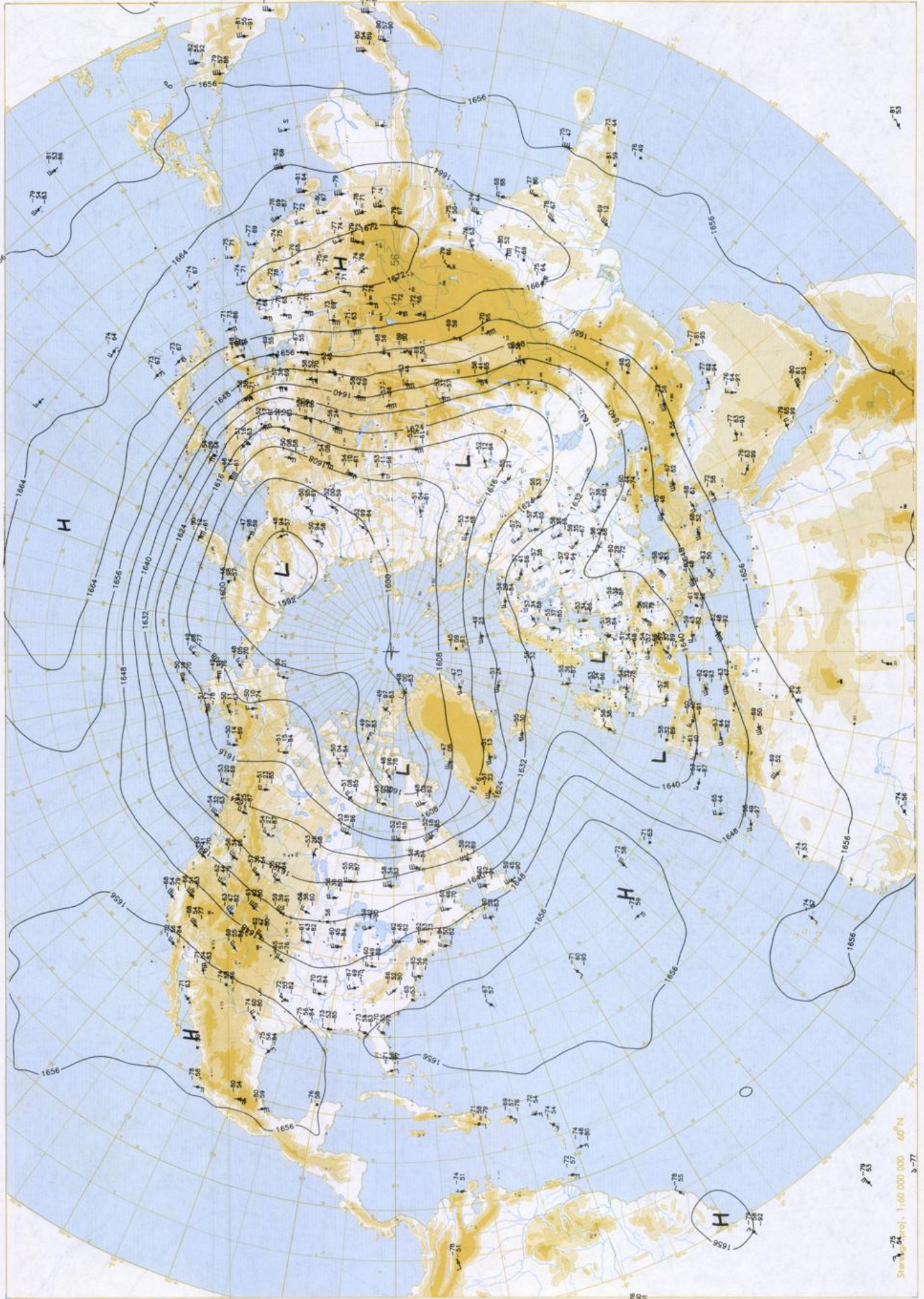
BOBEN 170-09-01.12 UTC



500 hPa 12 UTC

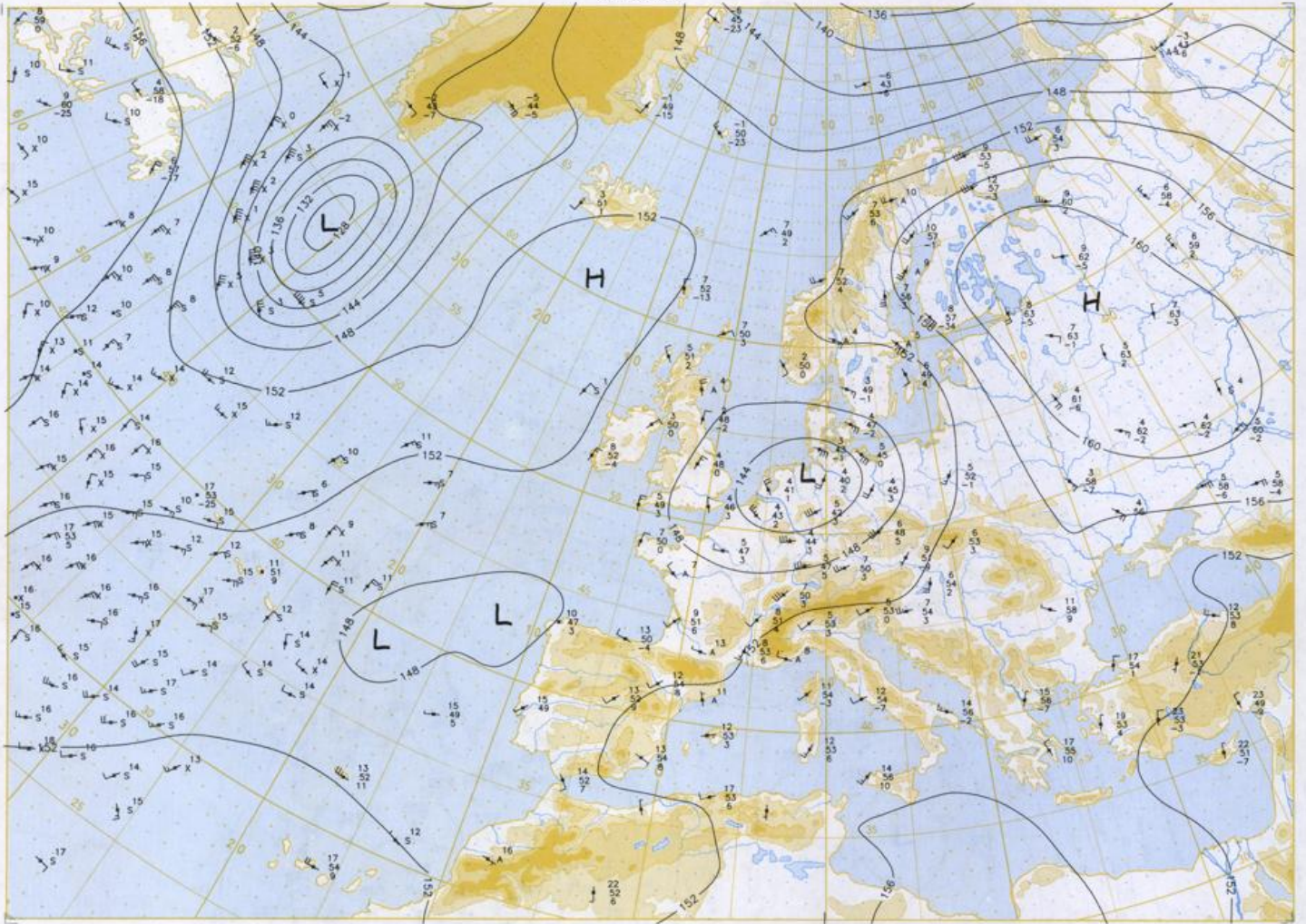
Scale 1:1000000 60°N





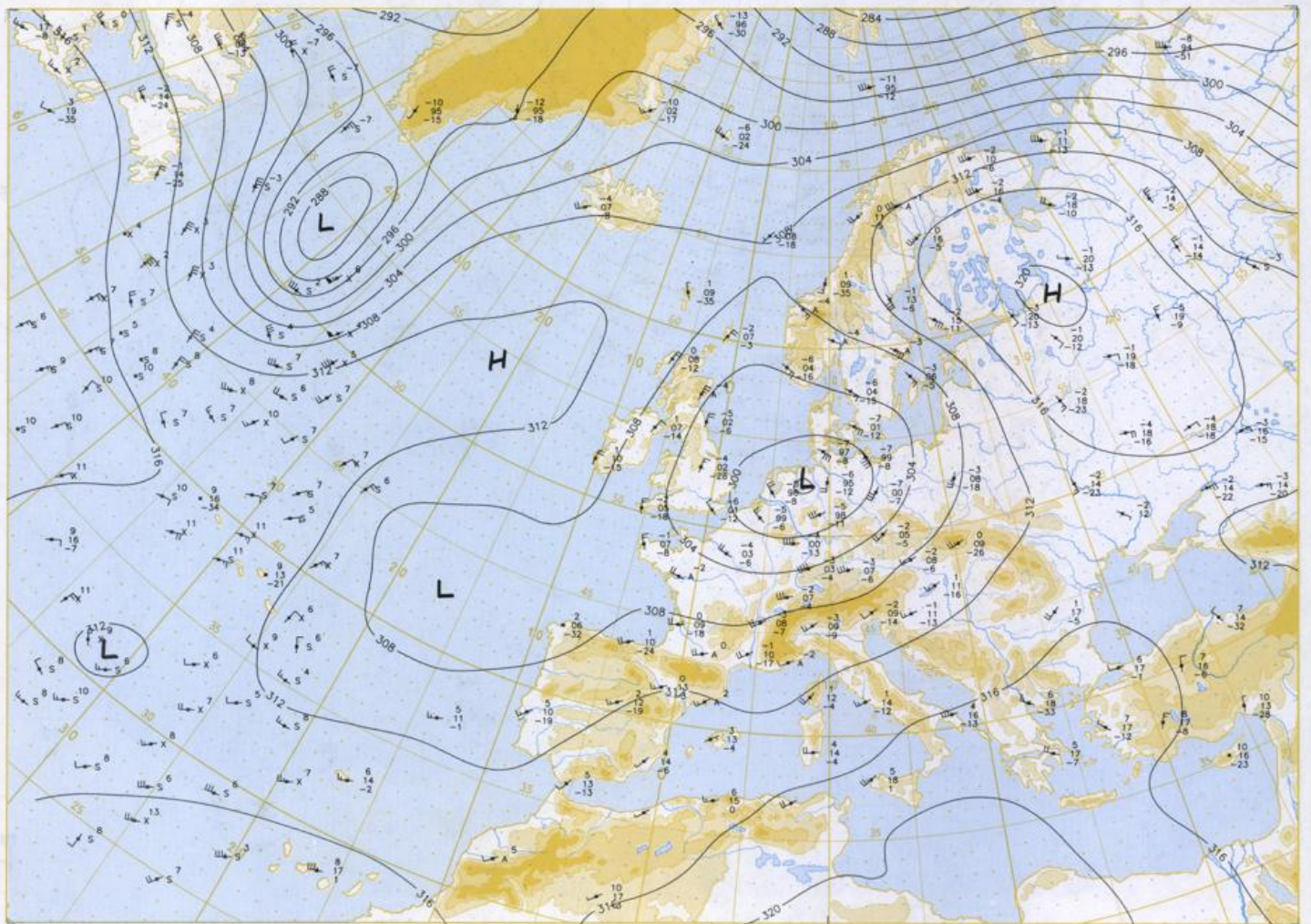
100 hPa 12 UTC

1:60 000 000 60°N  
 5-77

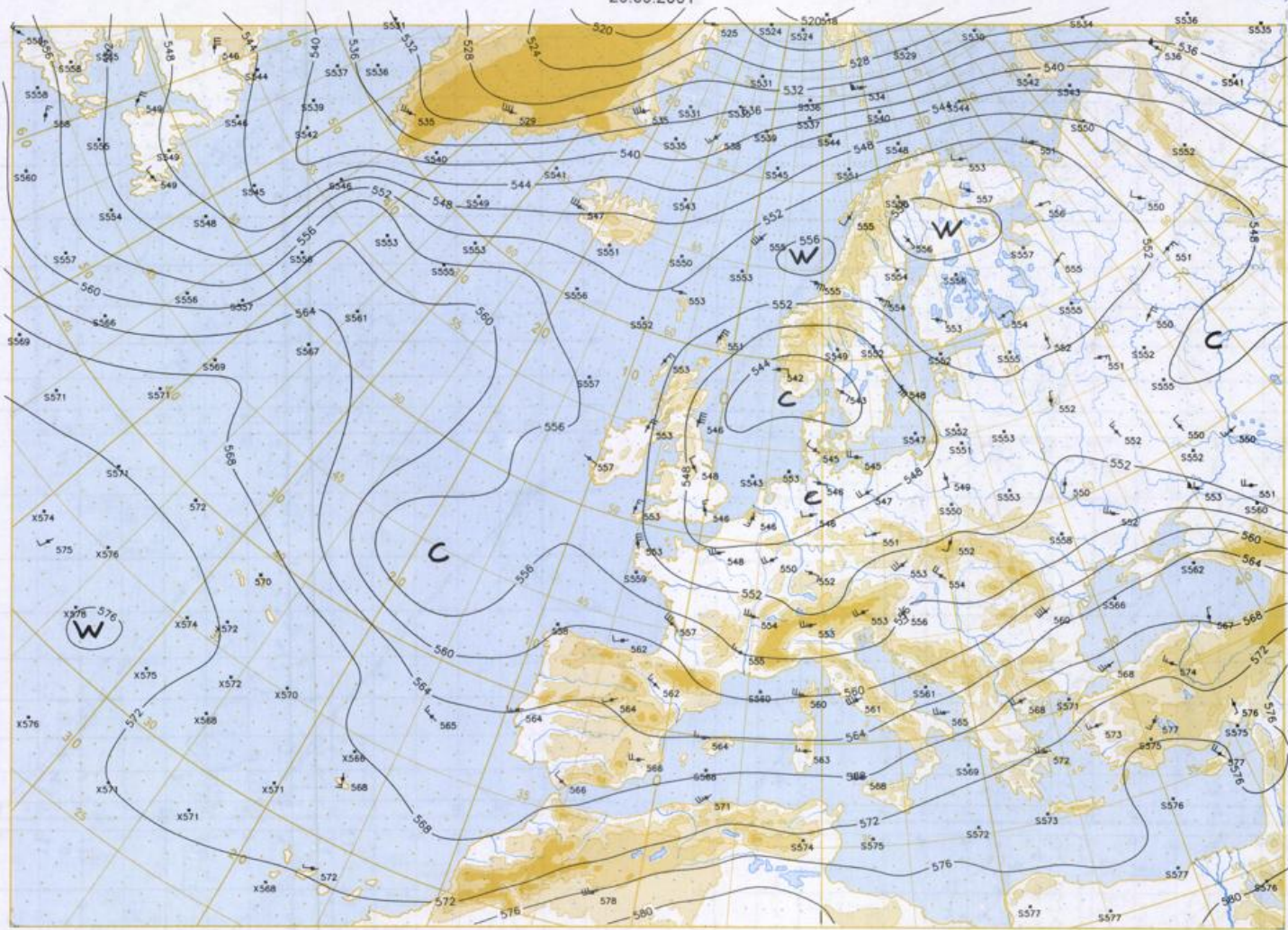


Stereogr. proj.: 1:30 000 000 in 60°N

850 hPa 12 UTC

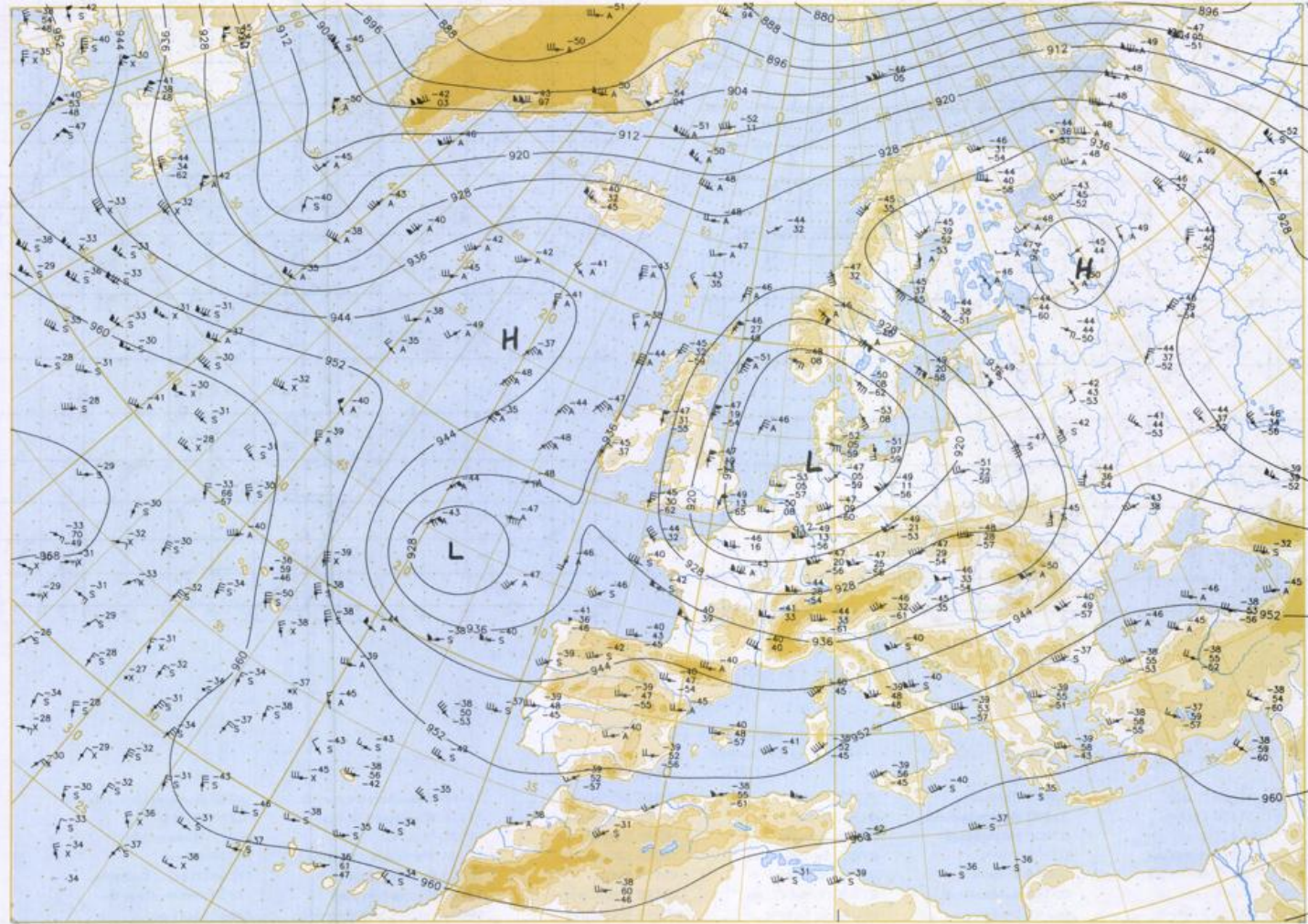


700 hPa 12 UTC



Stereogr. proj. 1:30 000 000 in 60°N

500/1000 hPa 12 UTC



300 hPa 12 UTC

