

# Europäischer Wetterbericht European Meteorological Bulletin Bulletin Météorologique Européen Boletín Meteorológico Europeo

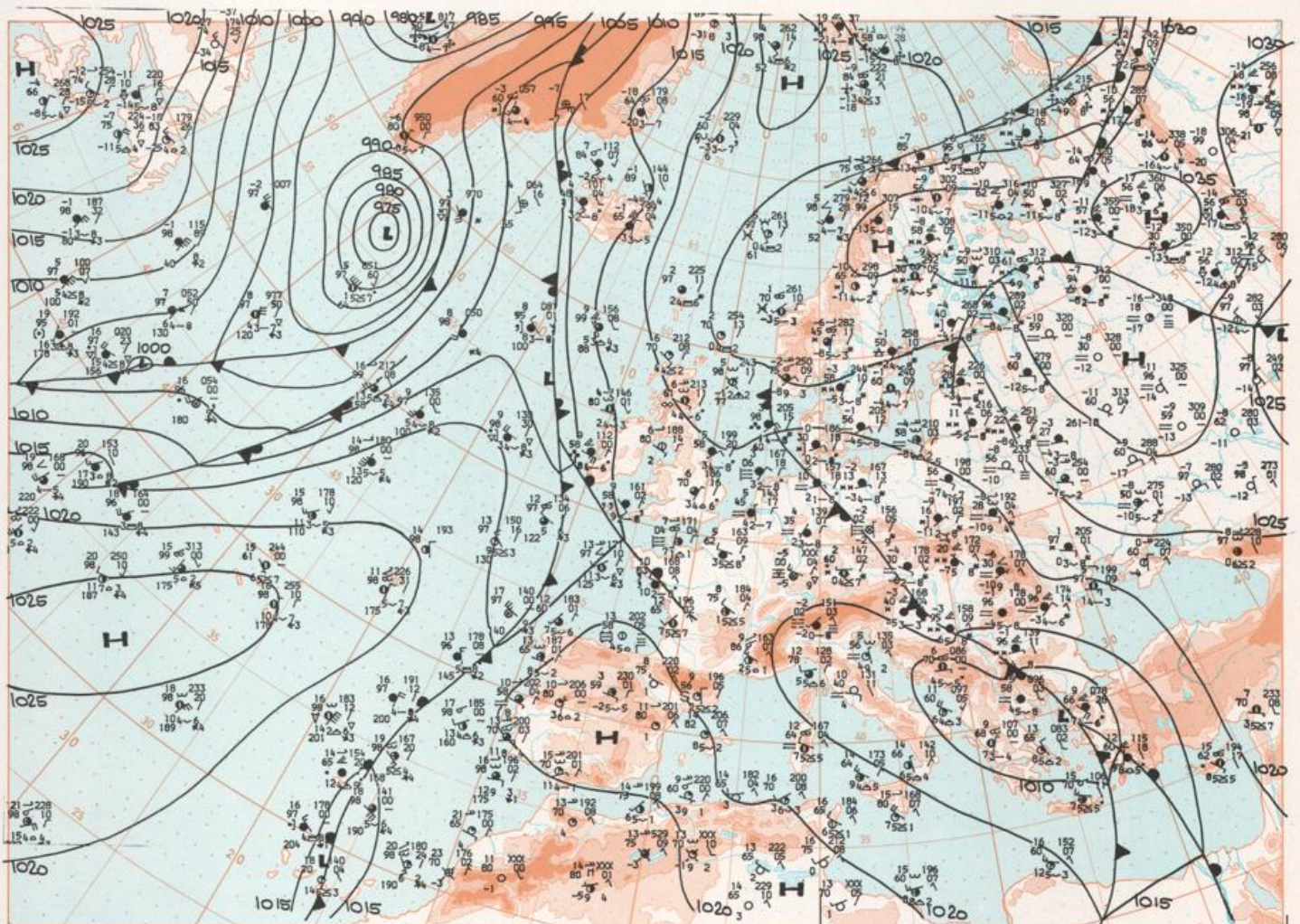
Amtsblatt des Deutschen Wetterdienstes

Druck und Verlag: Deutscher Wetterdienst — Zentralamt — D 6050 Offenbach am Main, Frankfurter Straße 135, Tel.: (06 11) 806 21

Er erscheint täglich	Issued daily	Publié quotidiennement	Se publica diariamente
Bezugspreis monatlich einzihl. Porto 30.00 DM	Monthly price including postage 30.00 DM	Prix mensuel port compris 30.00 DM	Precio de suscripción mensual incluyendo porte 30.00 DM
Nachdruck nicht gestattet	All rights reserved	Reproduction interdite	Se prohíbe la reproducción

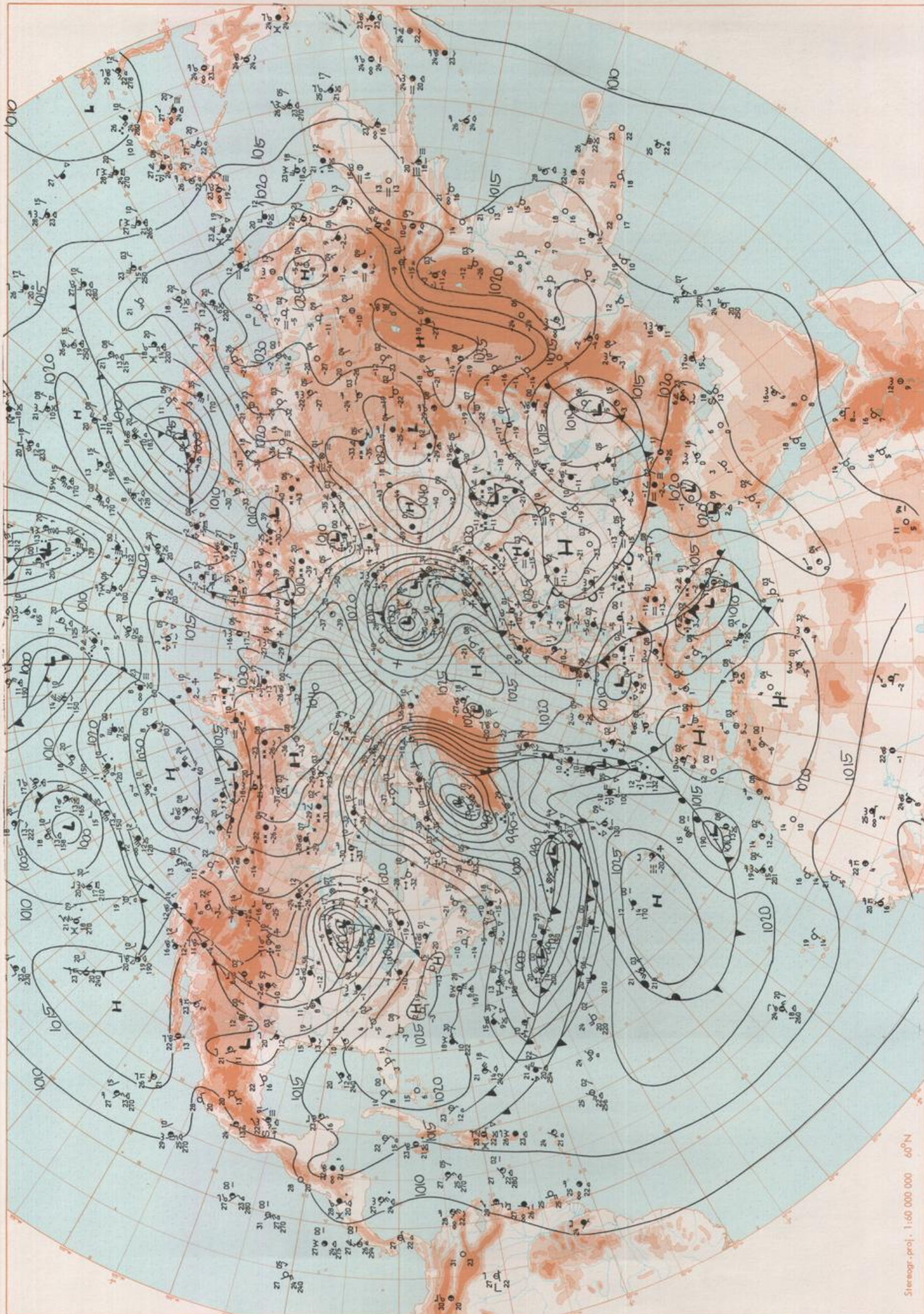
Jahrgang Volume Volume Volumen	5	Montag Monday Lundi Lunes	07. 01. 1980	Nummer Number Número Número	7
---	---	------------------------------------	--------------	--------------------------------------	---

<b>Inhalt</b> Bodenwetterkarte 12 MGZ Bodenwetterkarte Nordhemisphäre 00 MGZ 500-mbar-Fläche Nordhemisphäre 00 MGZ 200-mbar-Fläche Nordhemisphäre 00 MGZ 100-mbar-Fläche Nordhemisphäre 00 MGZ 850 mbar 00 MGZ, 700 mbar 00 MGZ Relative Topographie 500/1000 mbar 00 MGZ 300 mbar 00 MGZ 24stünd. Bodenruckänderung 00 MGZ 24stünd. Änderung relative Topographie 500/1000 mbar 00 MGZ Aerologische Diagramme 00 MGZ	<b>Content</b> Surface chart 12 GMT Surface chart northern hemisphere 00 GMT 500 mbar surface northern hemisphere 00 GMT 200 mbar surface northern hemisphere 00 GMT 100 mbar surface northern hemisphere 00 GMT 850 mbar 00 GMT, 700 mbar 00 GMT Thickness chart 500/1000 mbar 00 GMT 300 mbar 00 GMT 24 hr surface pressure change 00 GMT 24 hr thickness change 500/1000 mbar 00 GMT Aerological diagrams 00 GMT	<b>Contenu</b> Carte de surface à 12 TU Carte de surface sur l'hémisphère nord à 00 TU Surface 500 mbar sur l'hémisphère nord à 00 TU Surface 200 mbar sur l'hémisphère nord à 00 TU Surface 100 mbar sur l'hémisphère nord à 00 TU 850 mbar 00 TU, 700 mbar 00 TU Carte d'épaisseur 500/1000 mbar 00 TU 300 mbar 00 TU Variations de pression en 24 h (niveau mer) en mbar à 00 TU Variations d'épaisseur 500/1000 mbar en 24 h 00 TU Diagrammes aérologiques 00 TU	<b>Contenido</b> Análisis en superficie a las 12 T.M.G. Análisis en superficie hemisferio norte a las 00 T.M.G. Topografía de la superficie de 500 mbar hemisferio norte a las 00 T.M.G. Topografía de la superficie de 200 mbar hemisferio norte a las 00 T.M.G. Topografía de la superficie de 100 mbar hemisferio norte a las 00 T.M.G. 850 mbar 00 T.M.G., 700 mbar 00 T.M.G. Relativo 500/1000 mbar 00 T.M.G. 300 mbar 00 T.M.G. Variación de la presión del suelo 24 h en mbar a las 00 T.M.G. Variación de espesor 500/1000 mbar en 24 h 00 T.M.G. Diagramas aerológicos 00 T.M.G.
---	---	---	---

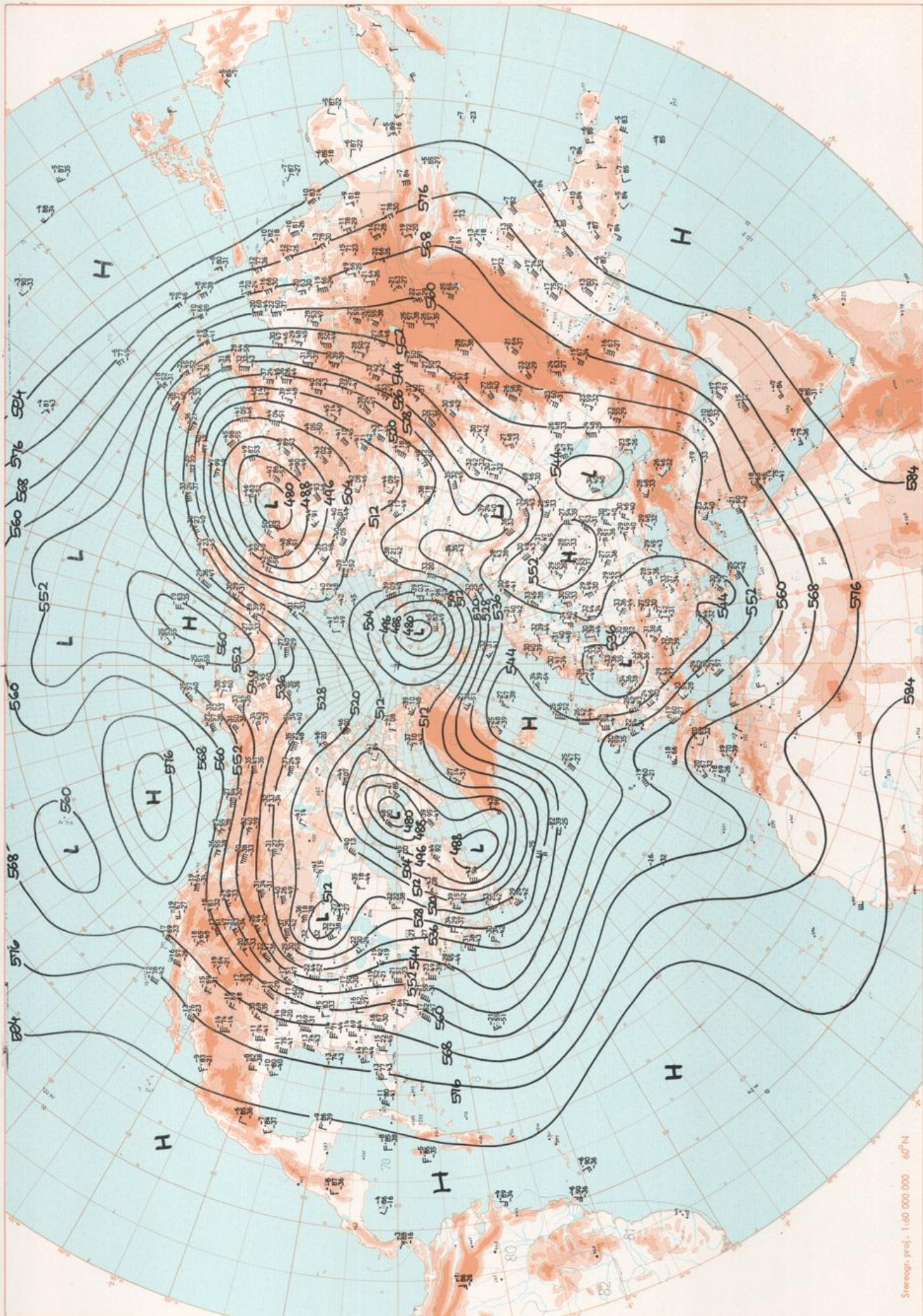


Stereogr. proj., 1:30 000 000, 60°N

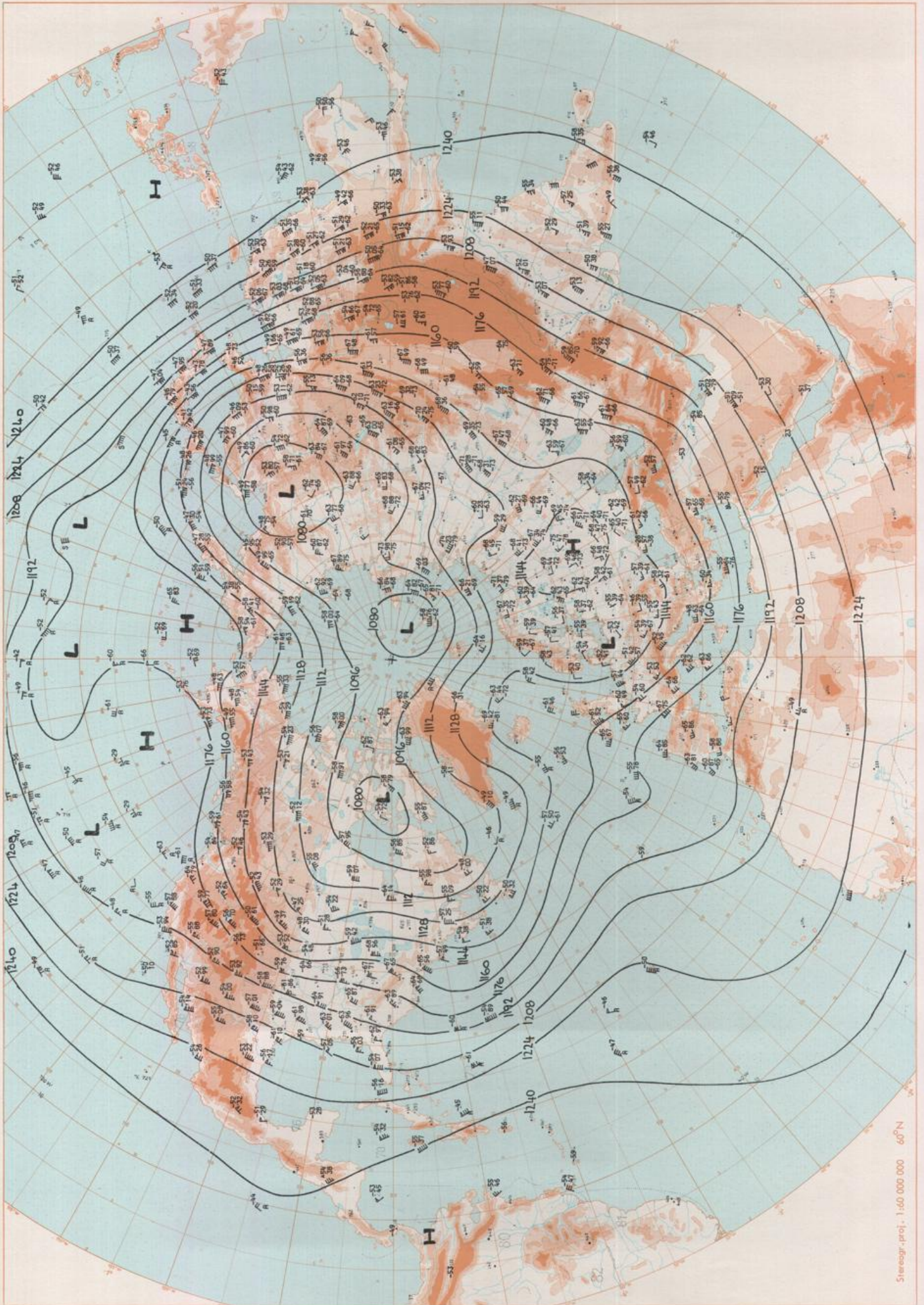
Surface chart 12 GMT



Stereogr. proj. 1:60 000 000 60°N

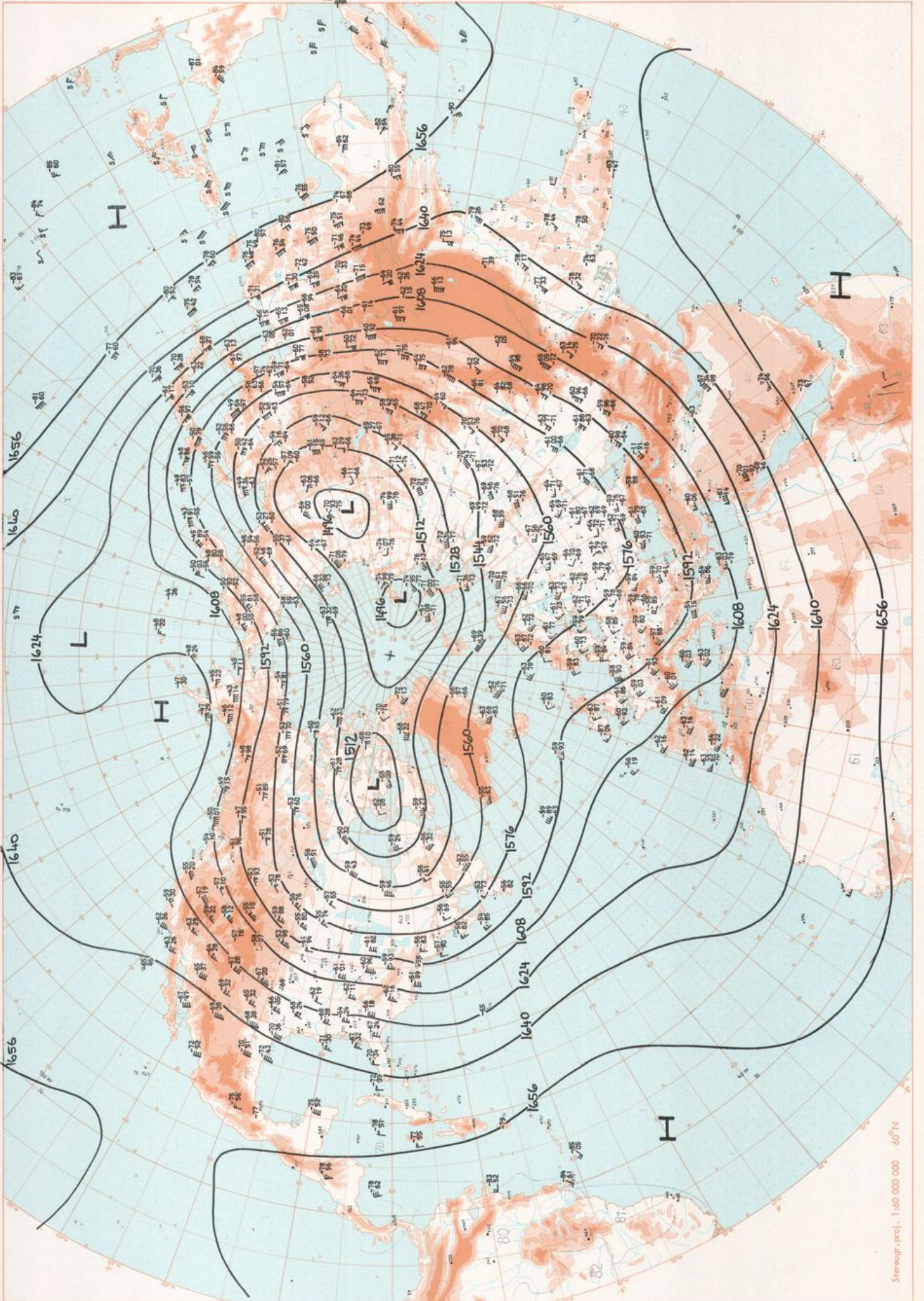


500 mbar OO GMT



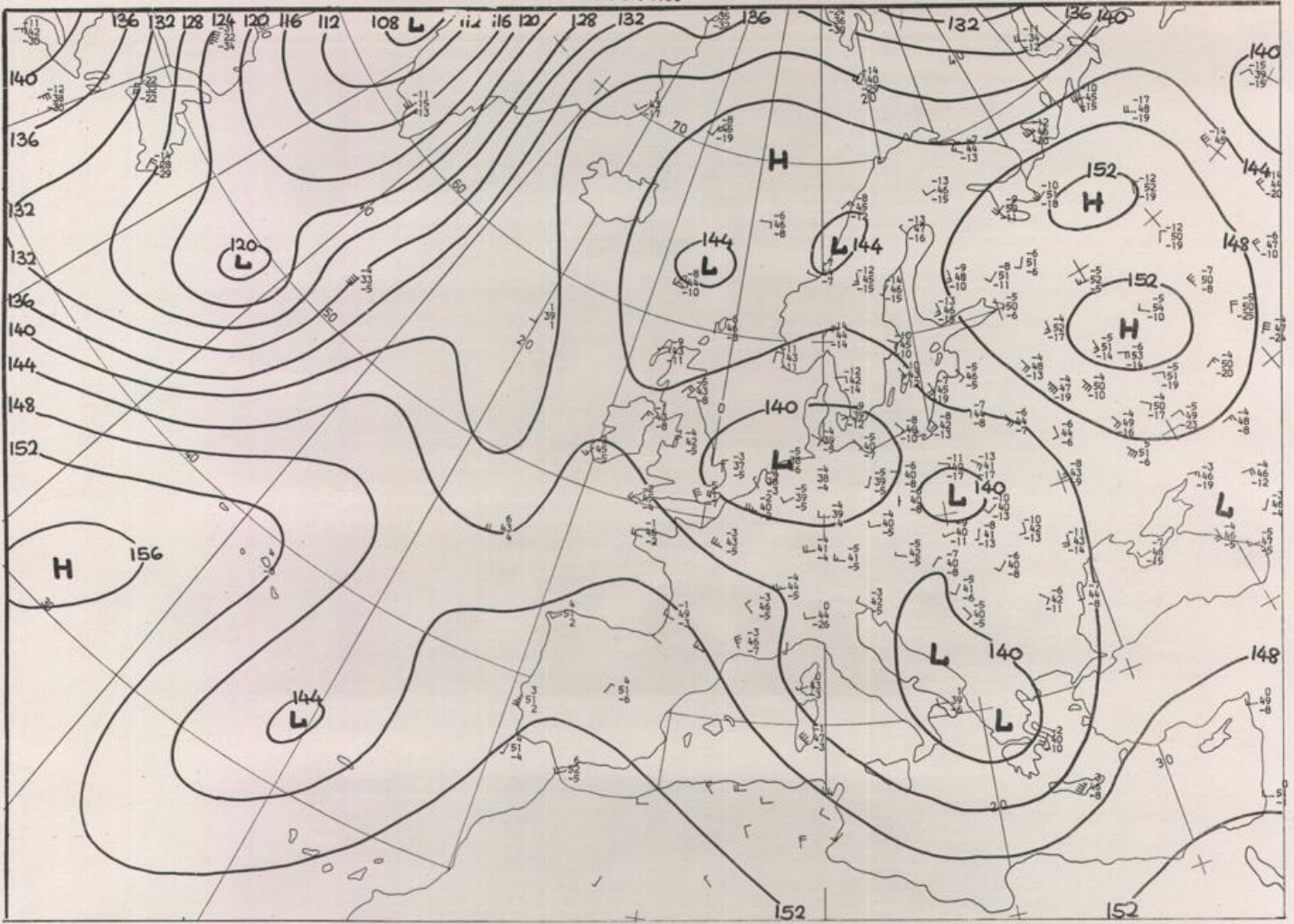
200 mbar OO GMT

Stereogr.-proj. 1:60 000 000 60°N



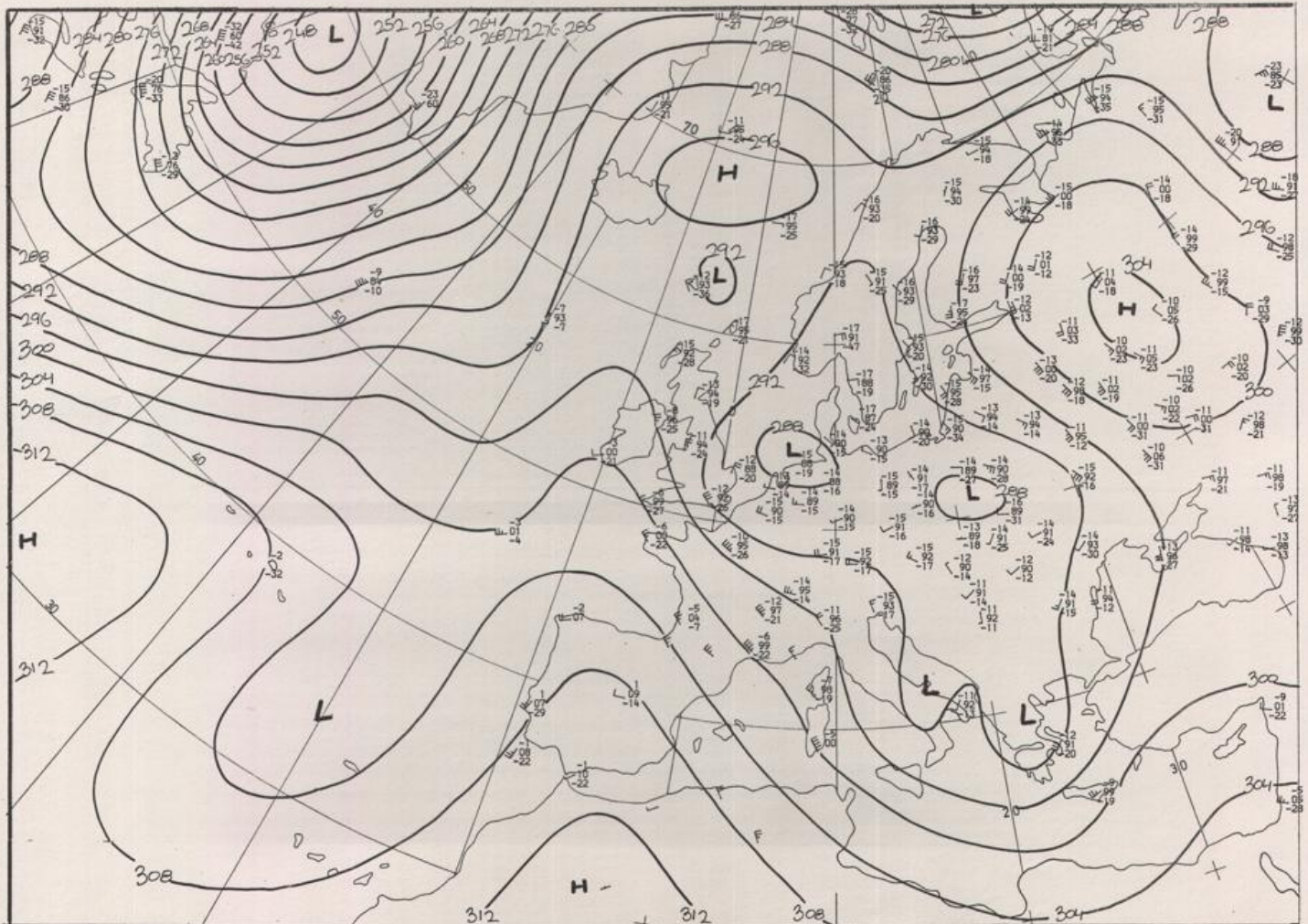
100 mbar OO GMT

07. 01. 1980

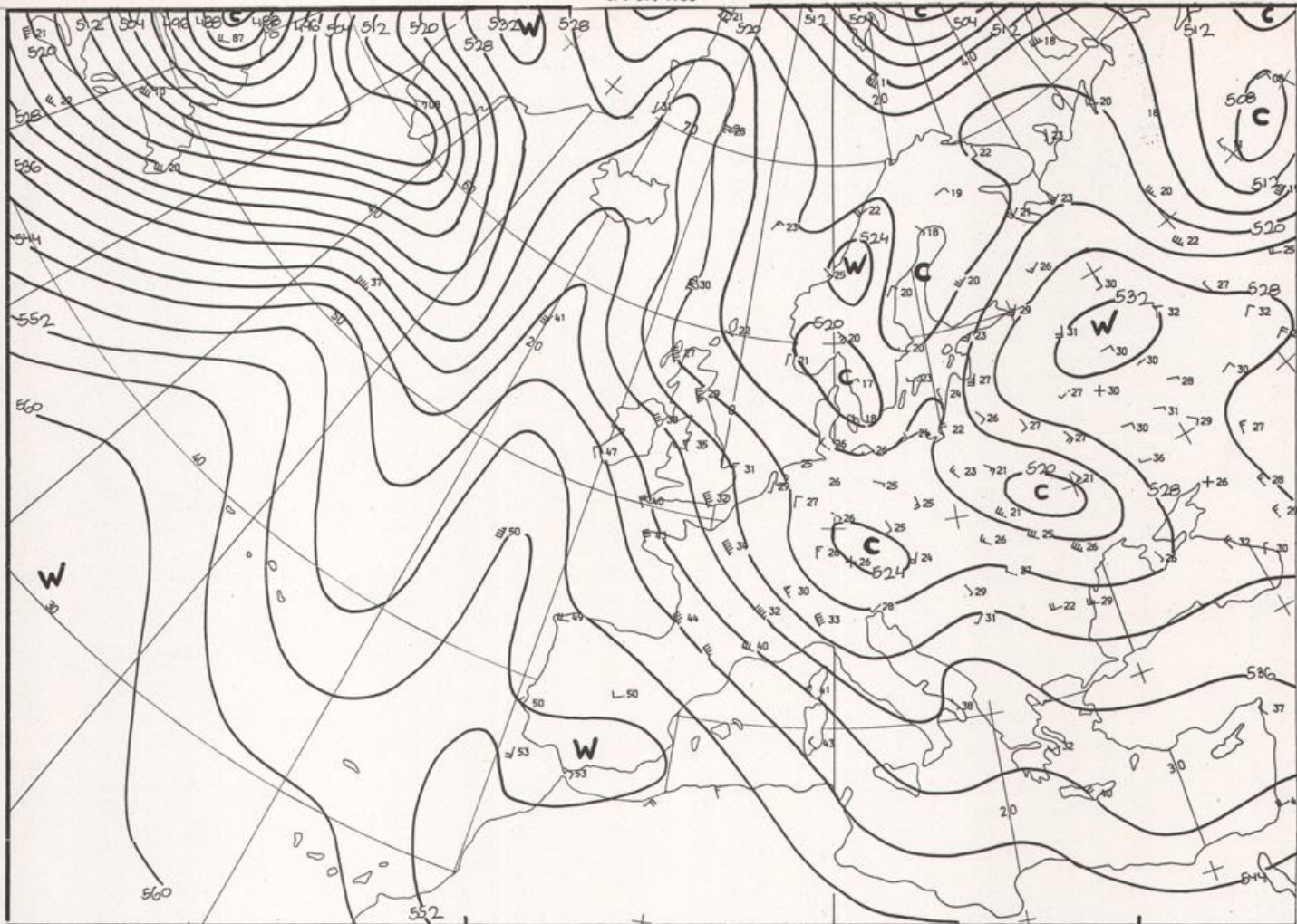


Stereogr. proj. 1:30 000 000 in 60°N

850 mbar OO GMT

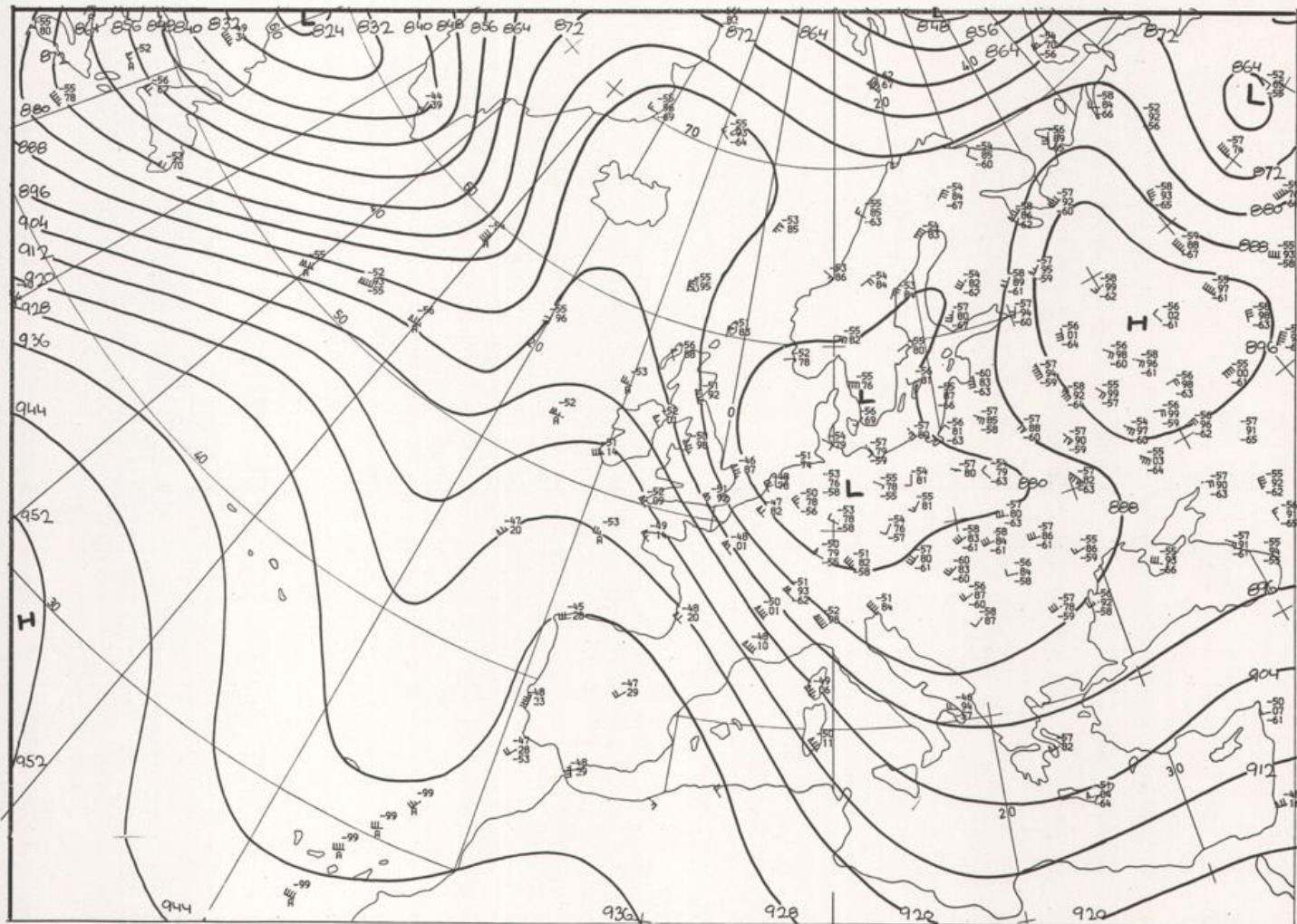


700 mbar OO GMT

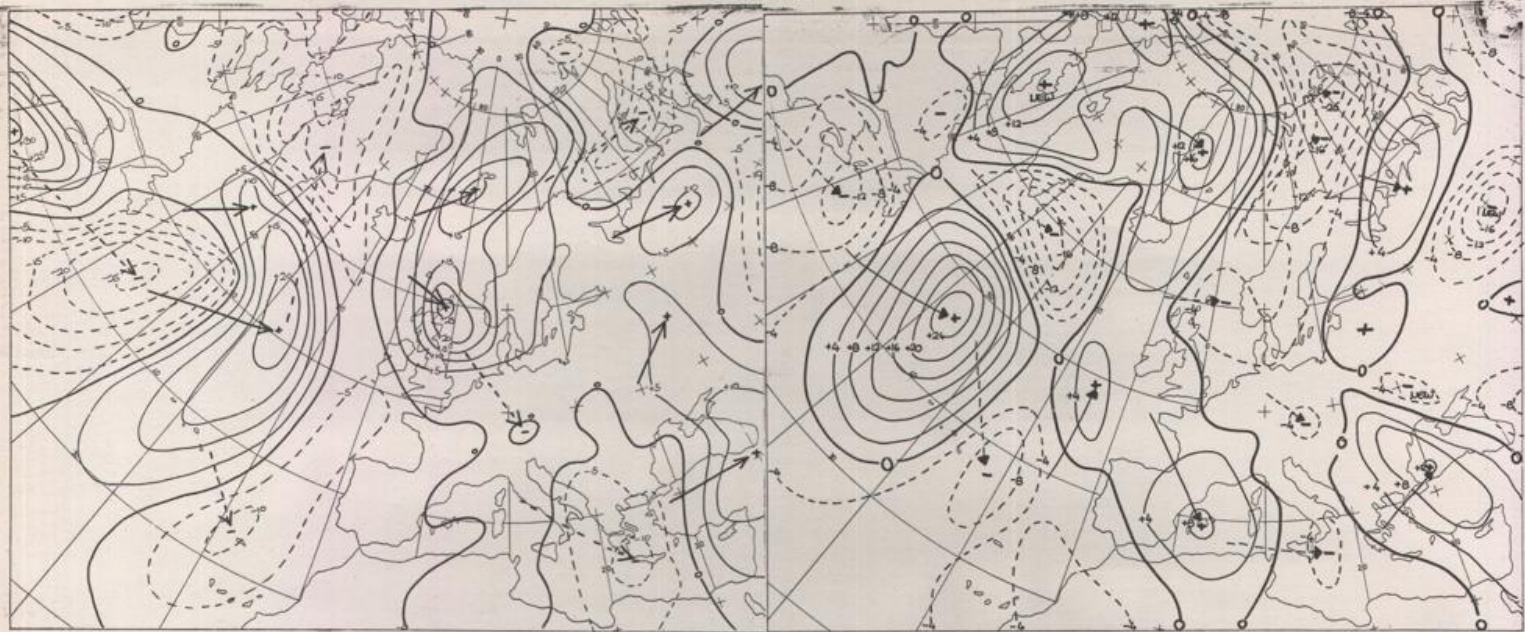


Stereogr. proj. 1:30 000 000 60°N

500/1000 mbar OO GMT



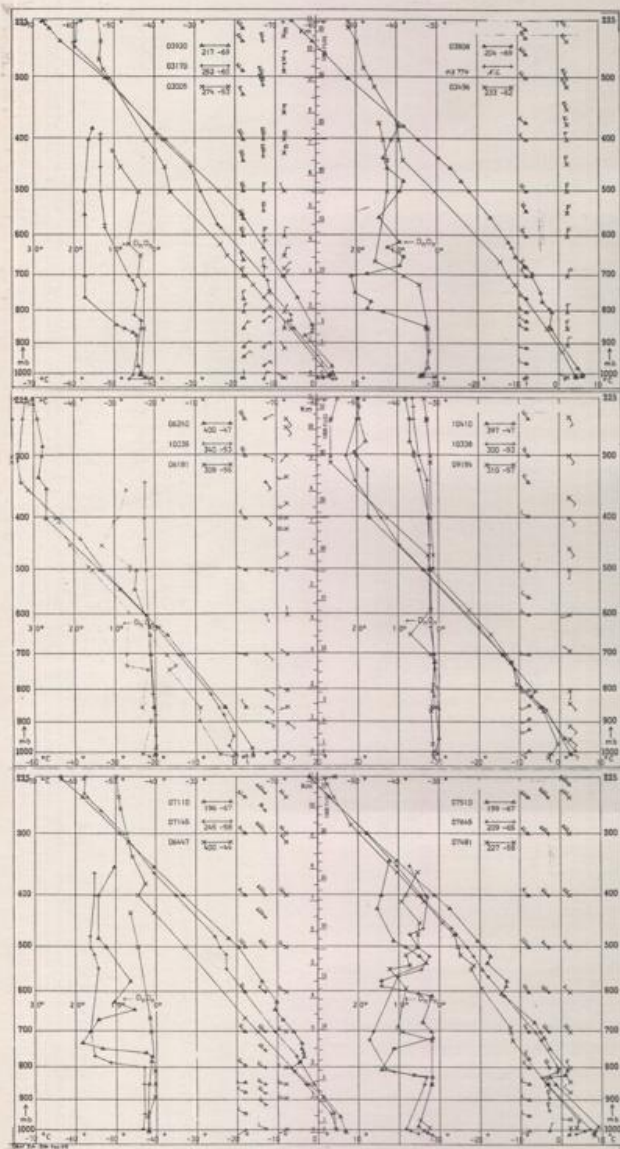
300 mbar OO GMT



Stereogr. proj. 1:60 000 000

24 hr surface pressure change OO GMT

24 hr thickness change OO GMT



Aerological Diagrams 00 GMT

- 01241 Orland
- 01384 Oslo
- 01415 Stavanger
- 02465 Stockholm
- 02527 Goteborg
- 03005 Lerwick
- 03170 Shanwell
- 03496 Hemsby
- 03774 Crawley
- 03808 Cambarne
- 03920 Long Kesh
- 06181 Kobenhavn
- 06260 De Bilt
- 06447 Uccle
- 06610 Payerne
- 07110 Brest
- 07145 Trappes
- 07481 Lyon
- 07510 Bordeaux
- 07645 Nimes
- 09184 Greifswald
- 09393 Lindenberg
- 09548 Meiningen
- 10035 Schleswig
- 10338 Hannover
- 10410 Essen

