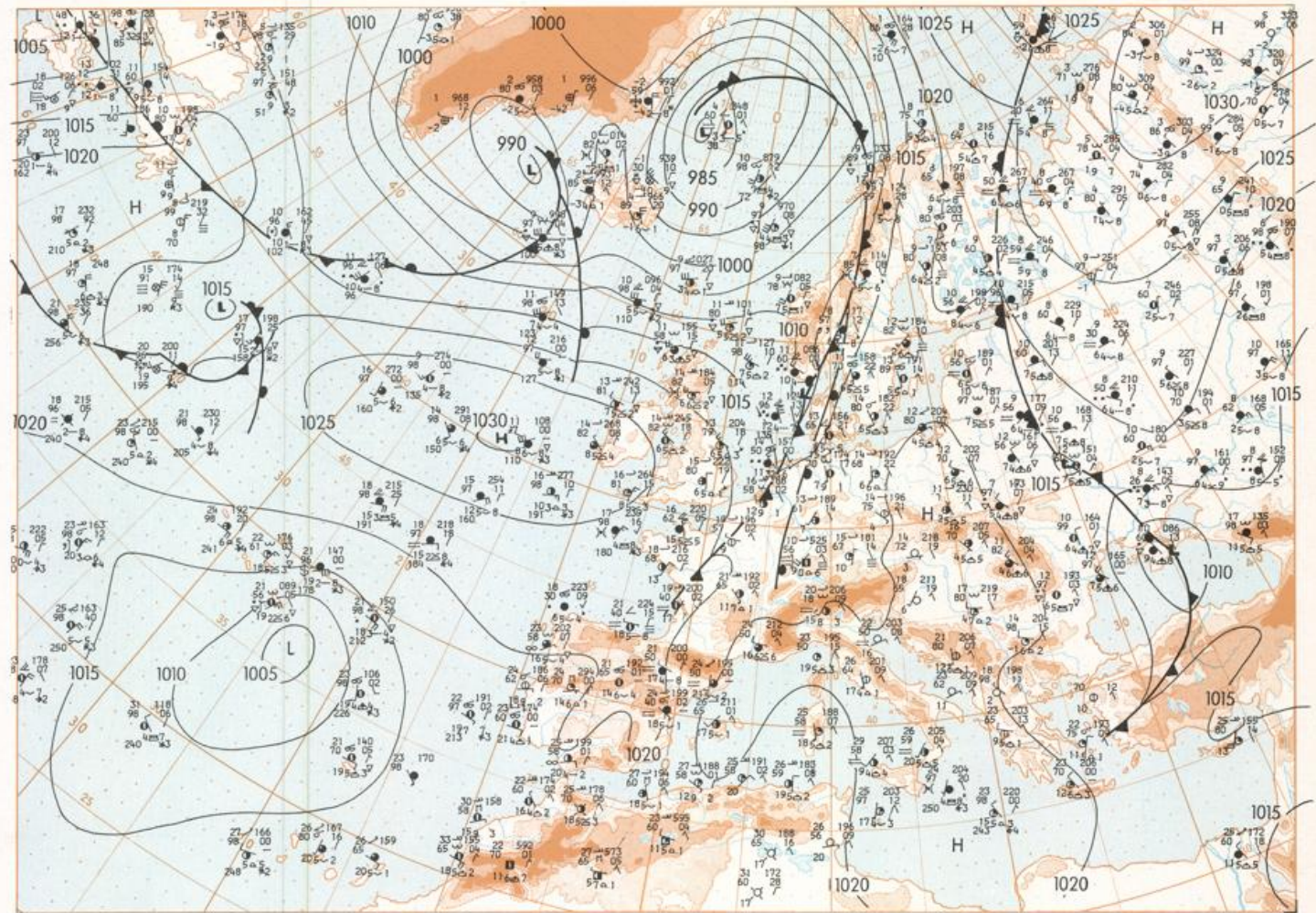


Europäischer Wetterbericht European Meteorological Bulletin Bulletin Météorologique Européen Boletín Meteorológico Europeo

Amtsblatt des Deutschen Wetterdienstes

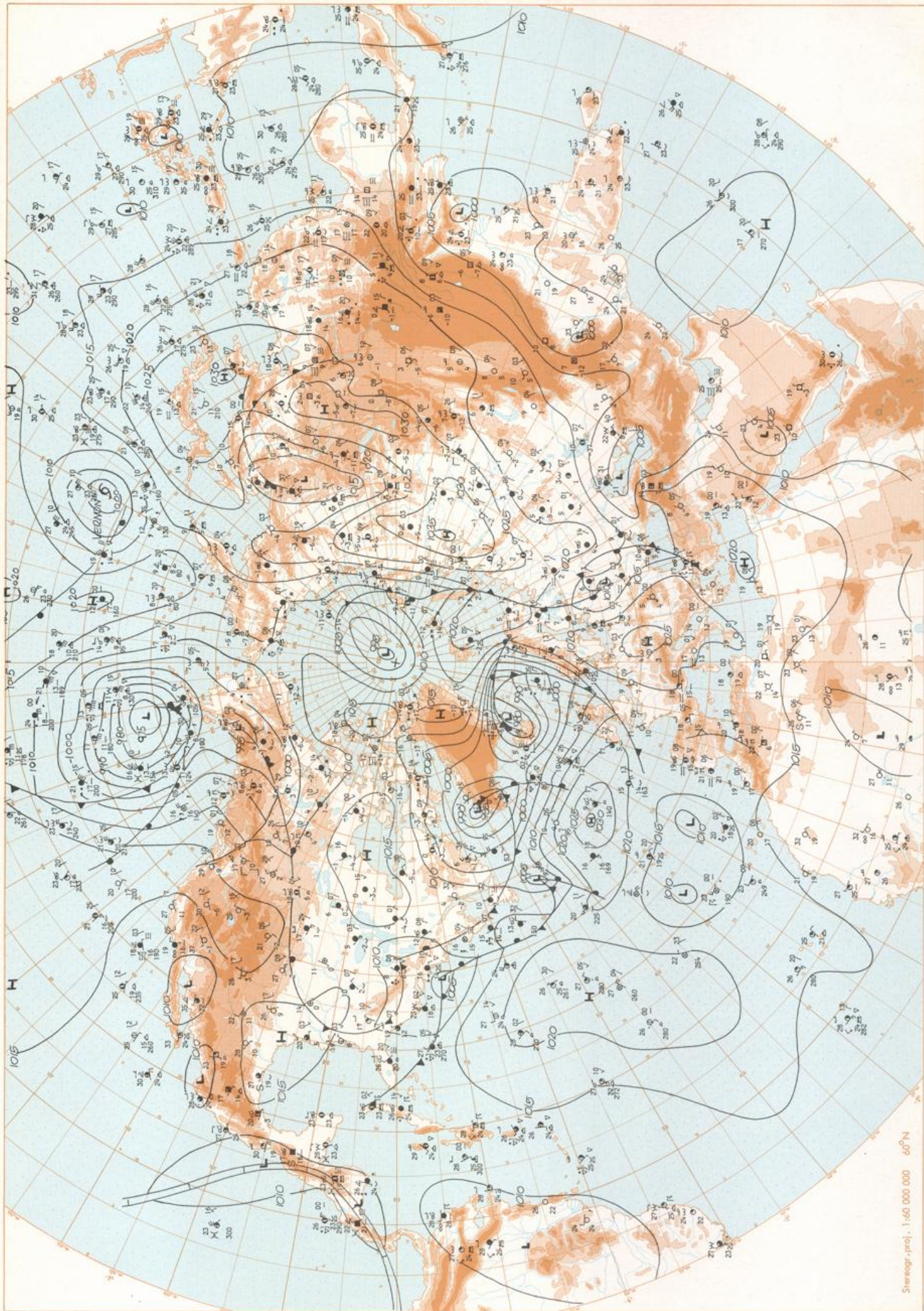
Druck und Verlag: Deutscher Wetterdienst — Zentralamt — D 6050 Offenbach am Main, Frankfurter Straße 135, Tel.: (0611) 80621

Erscheint täglich	Issued daily	Publié quotidiennement	Se publica diariamente
Bezugspreis monatlich einschl. Porto 30,00 DM	Monthly price including postage 30,00 DM	Prix mensuel port compris 30,00 DM	Precio de suscripción mensual incluyendo porte 30,00 DM
Nachdruck nicht gestattet	All rights reserved	Reproduction interdite	Se prohíbe la reproducción
Jahrgang Volume Volumen 5	Samstag Saturday Samedi 4.10.1980	Number Number Número 278	
Inhalt	Content	Contenu	Contenido
Bodenwetterkarte 12 MGZ	Surface chart 12 GMT	Carte de surface à 12 TU	Análisis en superficie a las 12 T.M.G.
Bodenwetterkarte Nordhemisphäre 00 MGZ	Surface chart northern hemisphere 00 GMT	Carte de surface sur l'hémisphère nord à 00 TU	Análisis en superficie hemisferio norte a las 00 T.M.G.
500-mbar-Fläche Nordhemisphäre 00 MGZ	500 mbar surface northern hemisphere 00 GMT	Surface 500 mbar sur l'hémisphère nord à 00 TU	Topografía de la superficie de 500 mbar hemisferio norte a las 00 T.M.G.
200-mbar-Fläche Nordhemisphäre 00 MGZ	200 mbar surface northern hemisphere 00 GMT	Surface 200 mbar sur l'hémisphère nord à 00 TU	Topografía de la superficie de 200 mbar hemisferio norte a las 00 T.M.G.
100-mbar-Fläche Nordhemisphäre 00 MGZ	100 mbar surface northern hemisphere 00 GMT	Surface 100 mbar sur l'hémisphère nord à 00 TU	Topografía de la superficie de 100 mbar hemisferio norte a las 00 T.M.G.
850 mbar 00 MGZ, 700 mbar 00 MGZ	850 mbar 00 GMT, 700 mbar 00 GMT	850 mbar 00 TU, 700 mbar 00 TU	850 mbar 00 T.M.G., 700 mbar 00 T.M.G.
Relative Topographie 500/1000 mbar 00 MGZ	Thickness chart 500/1000 mbar 00 GMT	Carte d'épaisseur 500/1000 mbar 00 TU	Relativa 500/1000 mbar 00 T.M.G.
300 mbar 00 MGZ	300 mbar 00 GMT	300 mbar 00 TU	300 mbar 00 T.M.G.
24stg. Bodendruckänderung 00 MGZ	24 hr surface pressure change 00 GMT	Variations de pression en 24 h (niveau mer) en mbar à 00 TU	Variación de la presión del suelo 24 h en mbar a las 00 T.M.G.
24stg. Änderung relative Topographie 500/1000 mbar 00 MGZ	24 hr thickness change 500/1000 mbar 00 GMT	Variations d'épaisseur 500/1000 mbar en 24 h 00 TU	Variación de espesor 500/1000 mbar en 24 h 00 T.M.G.
Aerologische Diagramme 00 MGZ	Aerological diagrams 00 GMT	Diagrammes aérologiques 00 TU	Diagramas aerológicos 00 T.M.G.

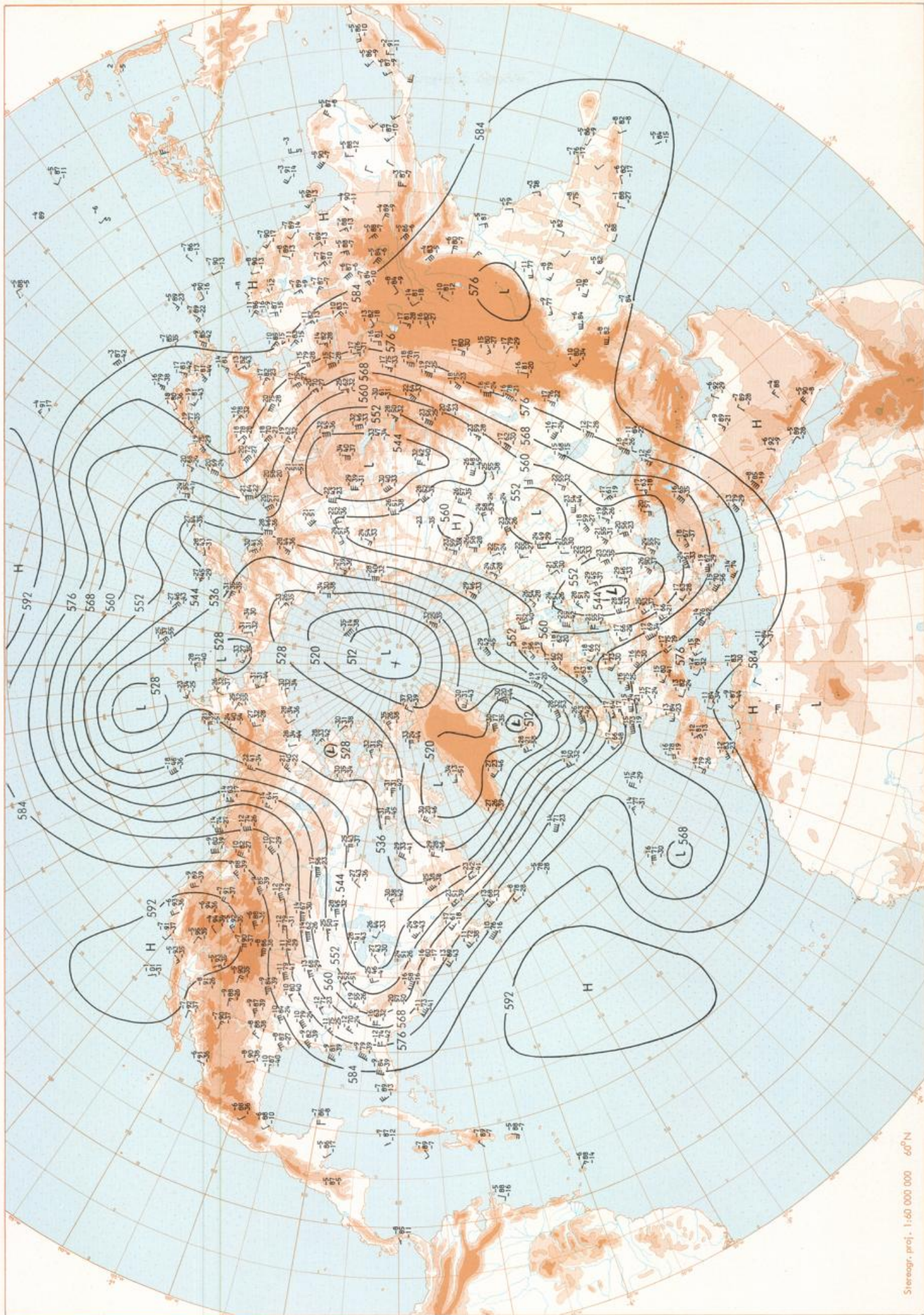


Stereogr. proj.: 1:30 000 000 60°N

Surface chart 12 GMT

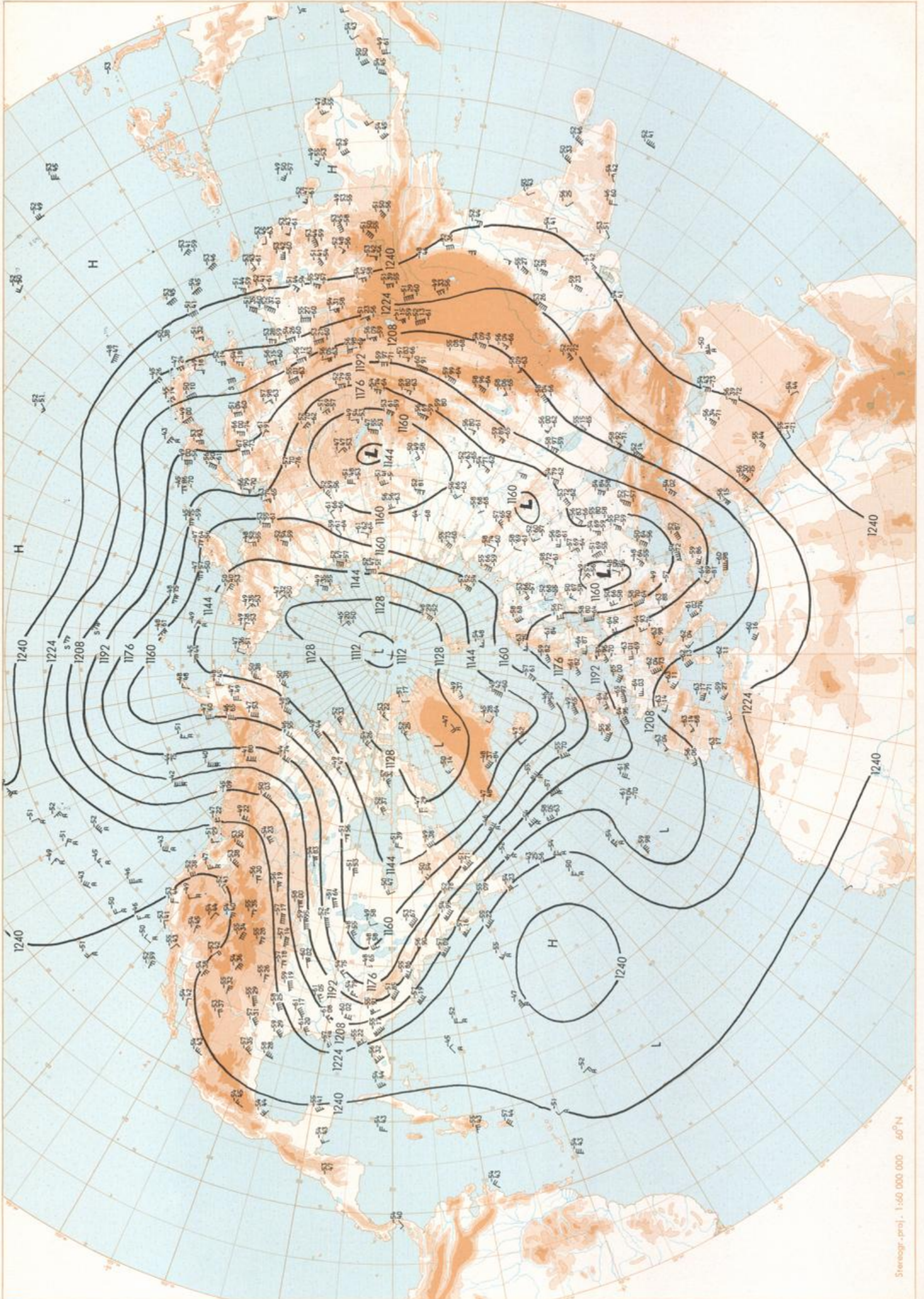


Stereogr. proj. 1:60 000 000 60°N

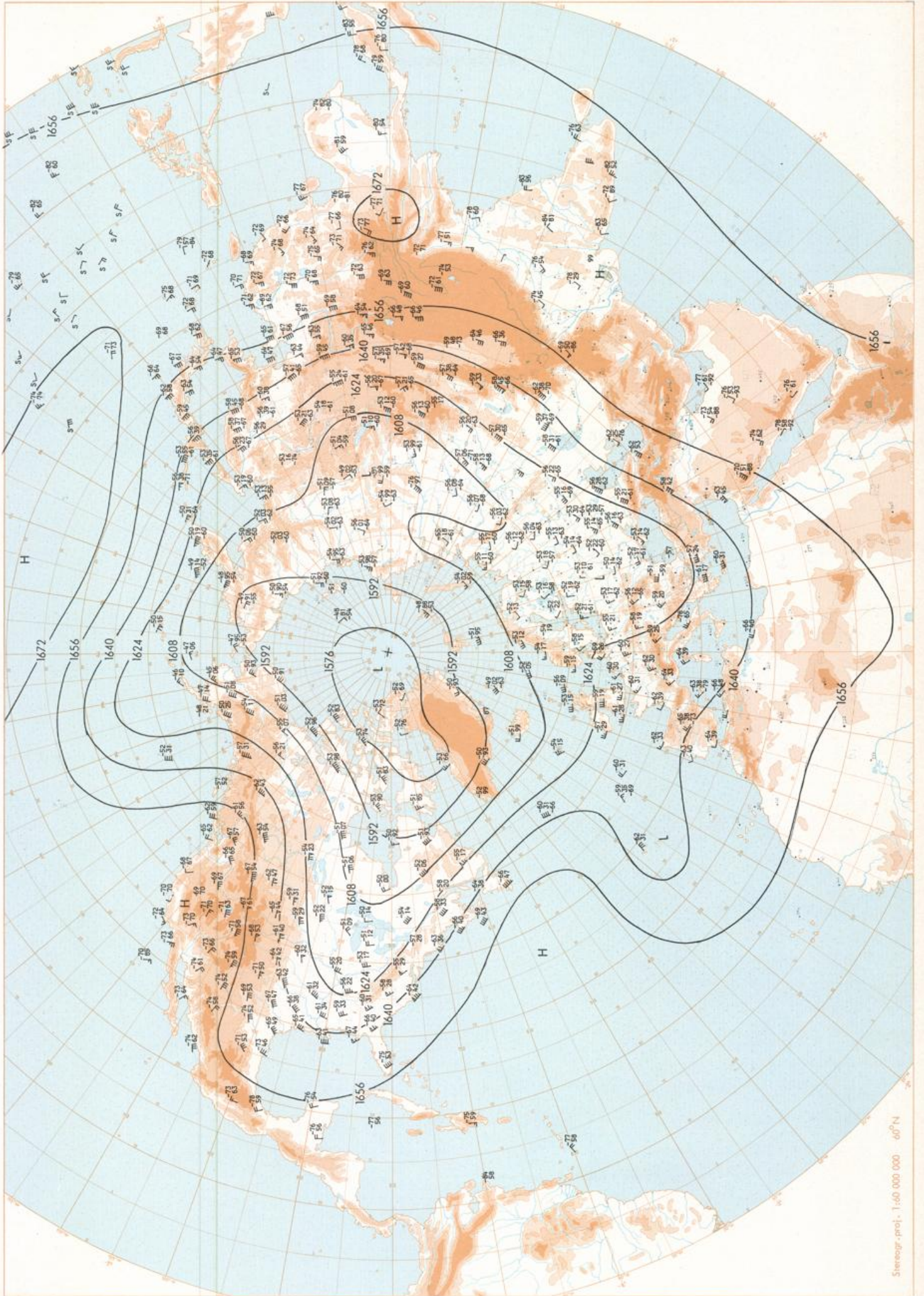


500 mbar OO GMT

Stereogr. proj. 1:60 000 000 60°N



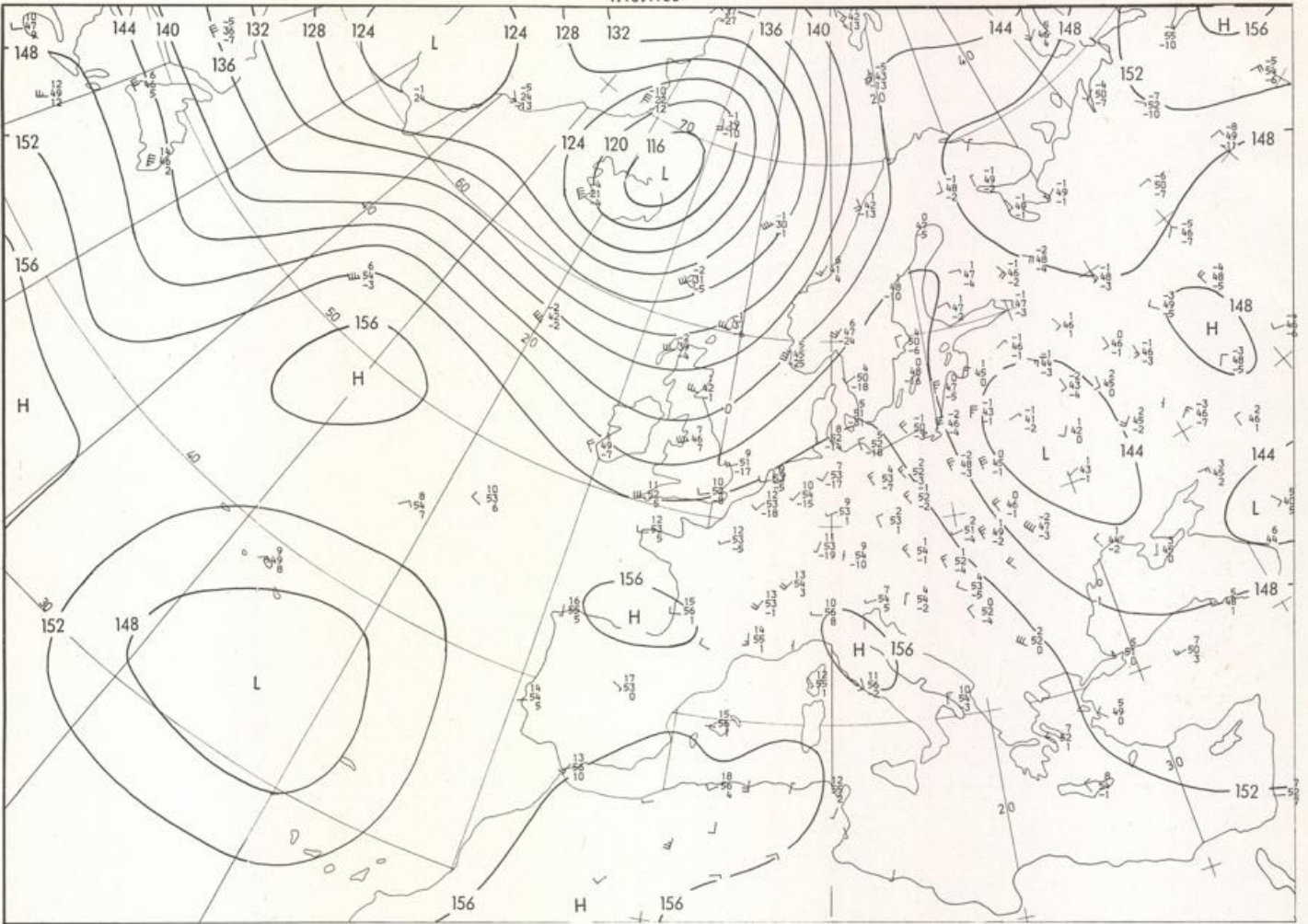
200 mbar 00 GMT



100 mbar OO GMT

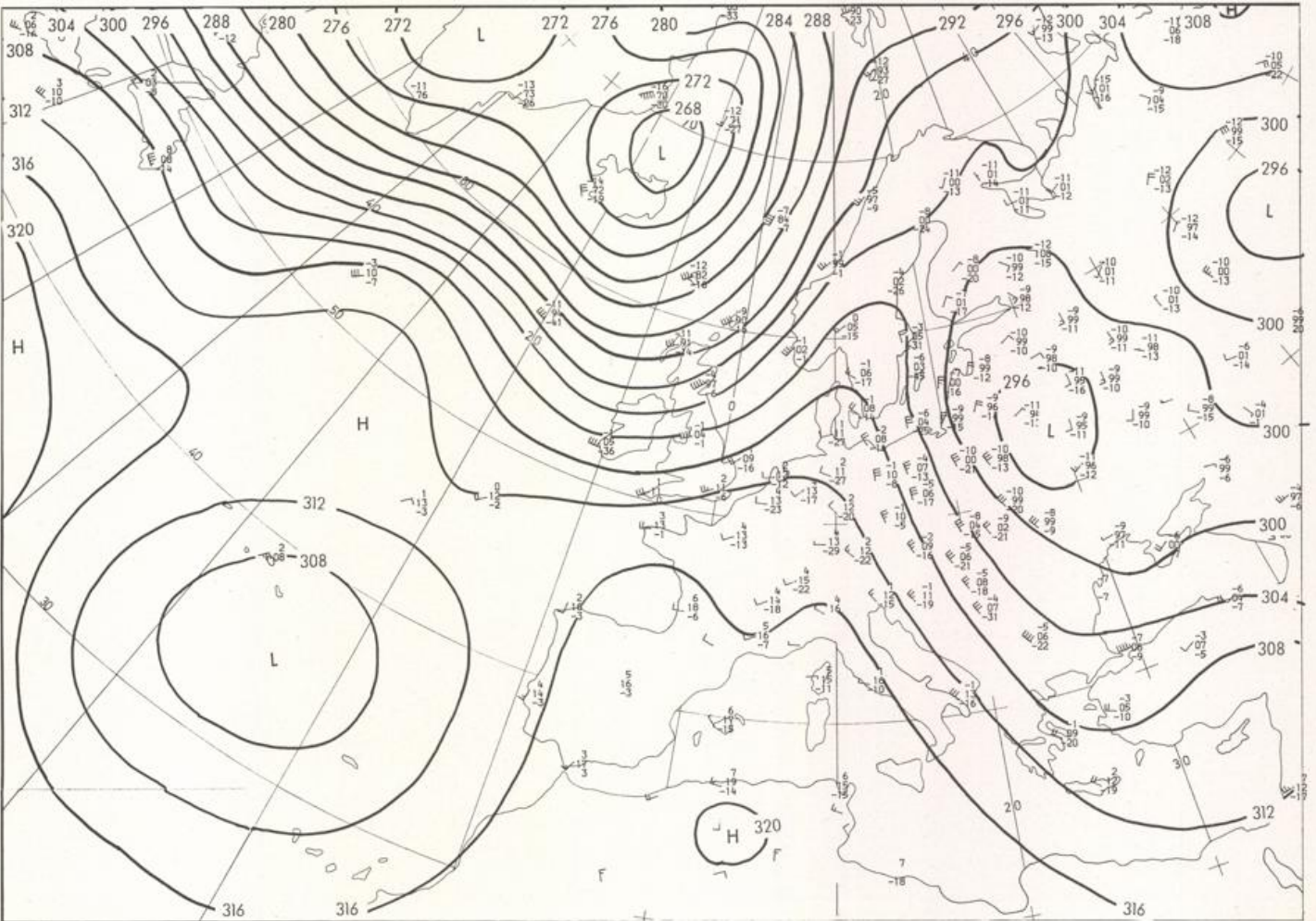
Stereogr. proj., 1:40 000 000, 60°N

4.10.1980

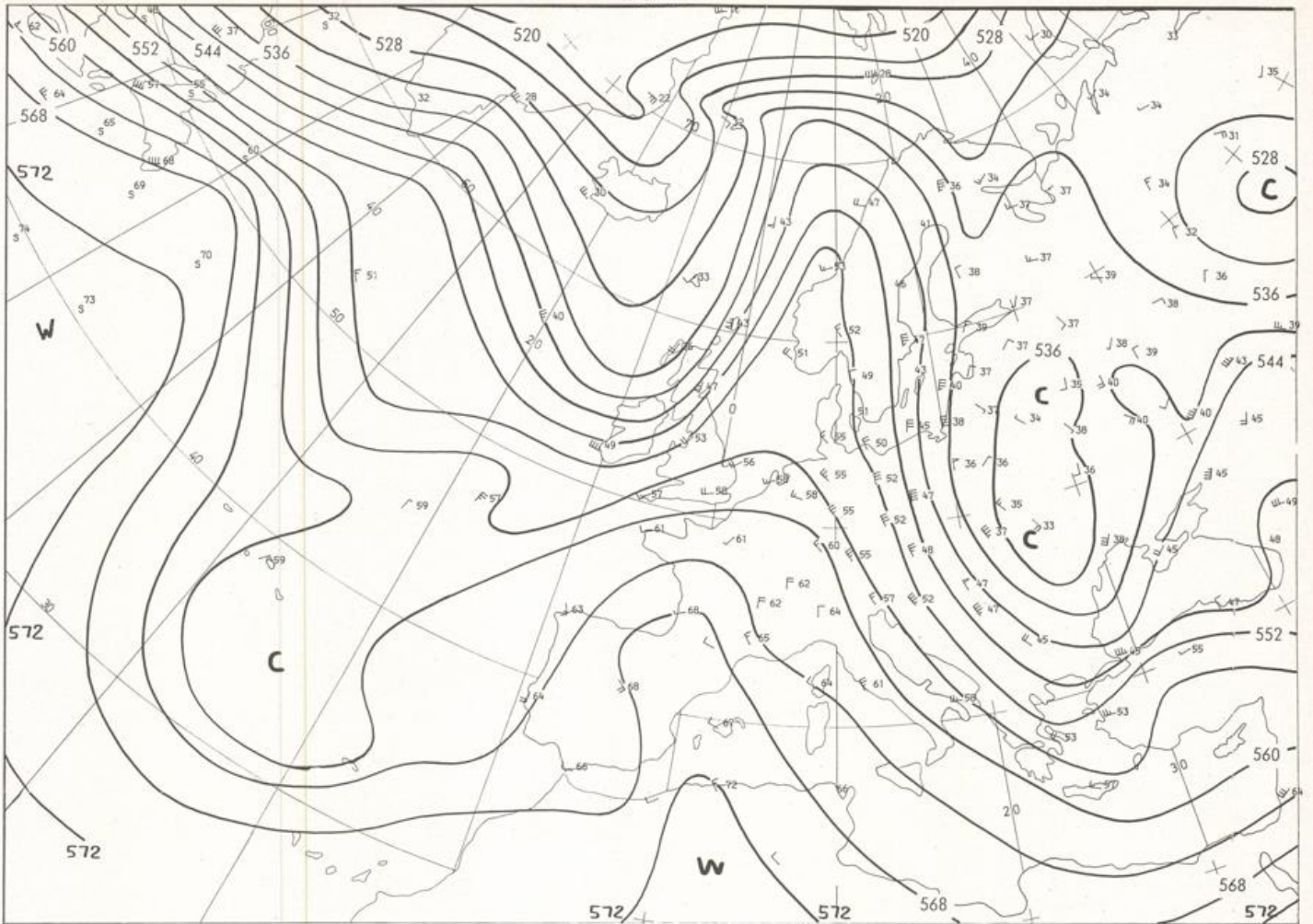


Stereogr.-proj. 1:30 000 000 in 60°N

850 mbar OO GMT

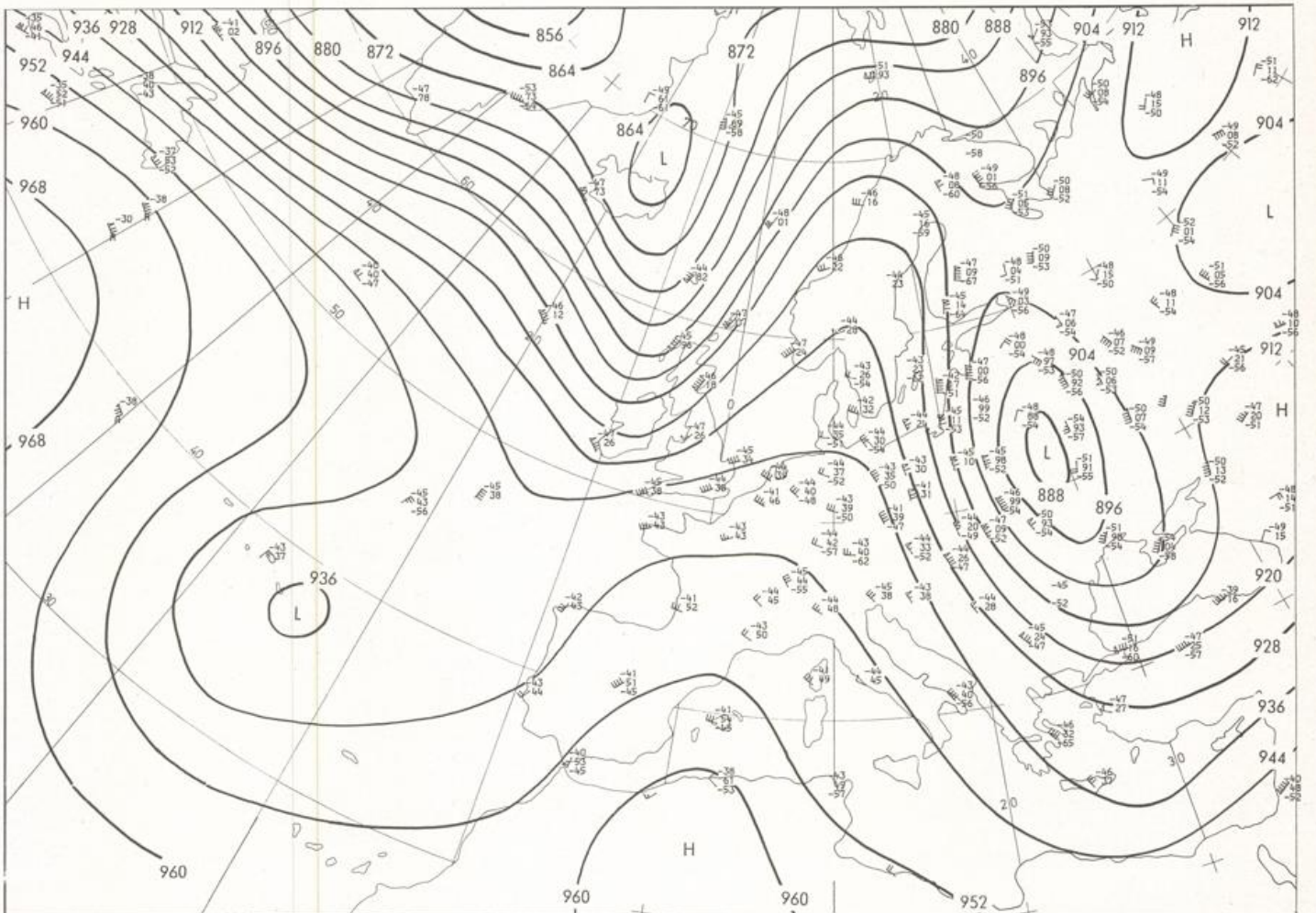


700 mbar OO GMT

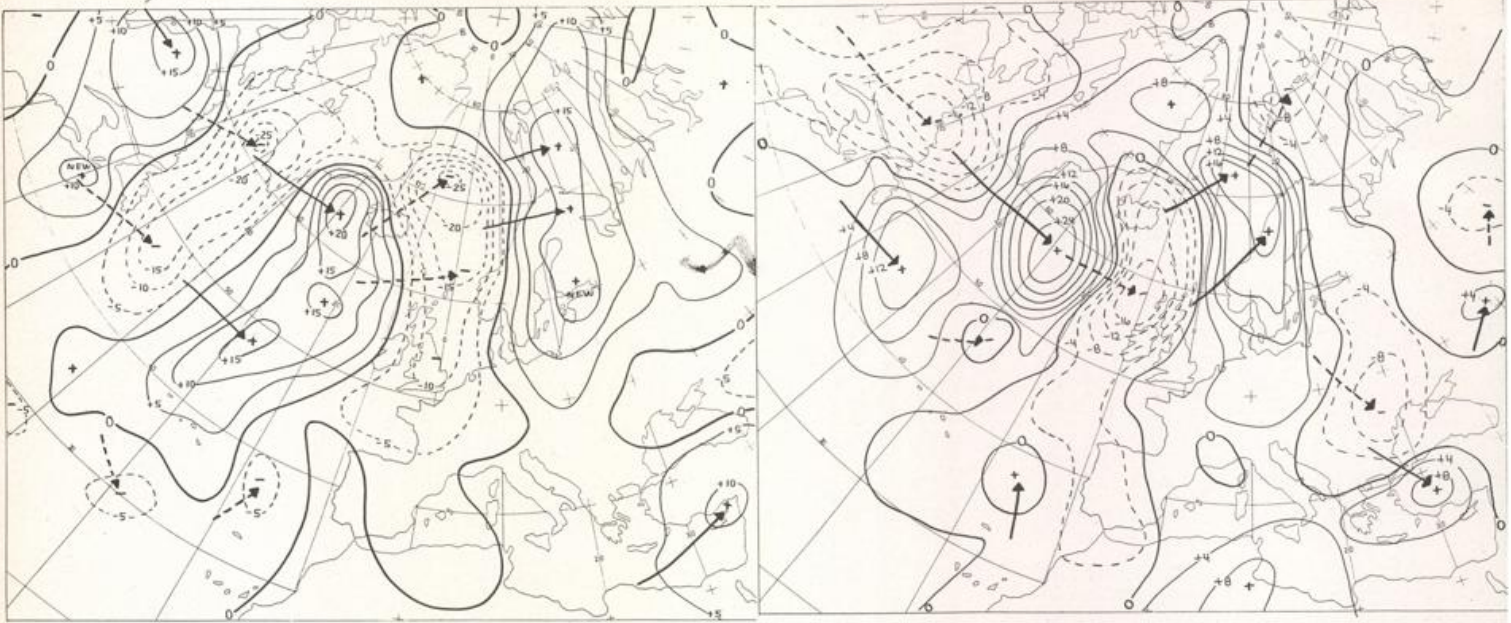


Stereogr. proj. 1:30 000 000 60°N

500/1000 mbar OO GMT



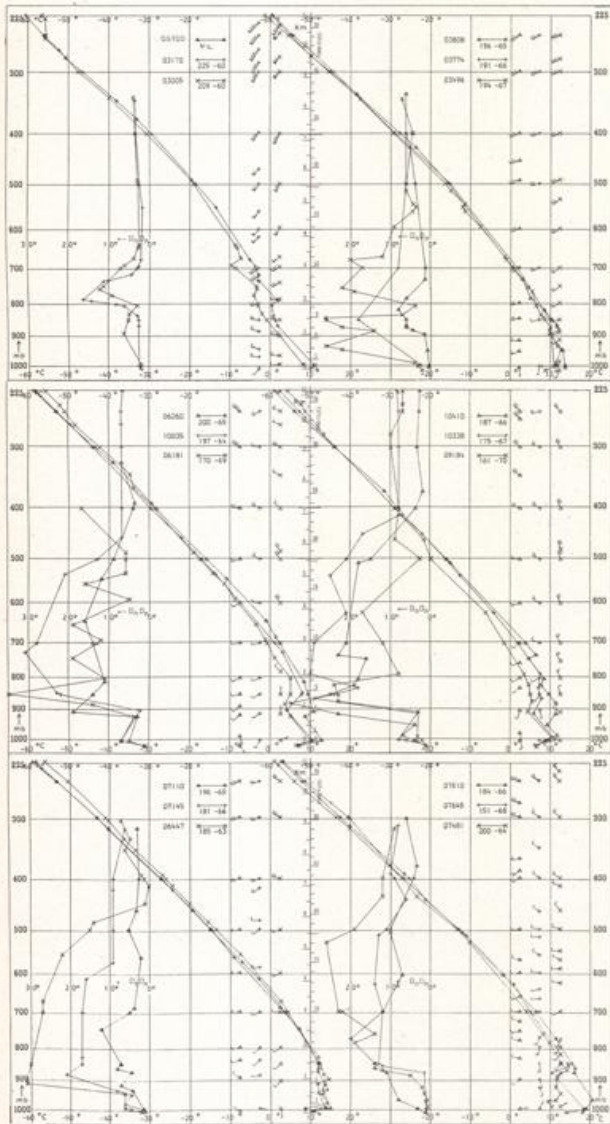
300 mbar OO GMT



Stereogr. proj. 1:60 000 000

24 hr surface pressure change 00 GMT

24 hr thickness change 00 GMT



Aerological Diagrams 00 GMT

- 01241 Orland
- 01384 Oslo
- 01415 Stavanger
- 02465 Stockholm
- 02527 Goteborg
- 03005 Lerwick
- 03170 Shanwell
- 03496 Hemsby
- 03774 Crawley
- 03808 Camborne
- 03920 Long Kesh
- 06181 Kobenhavn
- 06260 De Bilt
- 06447 Uccle
- 06610 Payame
- 07110 Brest
- 07145 Trappes
- 07481 Lyon
- 07510 Bordeaux
- 07645 Nimes
- 09184 Greifswald
- 09393 Lindenberg
- 09548 Meiningen
- 10035 Schleswig
- 10338 Hannover
- 10410 Essen
- 10739 Stuttgart
- 10868 München-Oberschleißheim
- 11035 Wien
- 11520 Praha-Libus
- 12374 Legionowo
- 12843 Budapest
- 13275 Beograd
- 16044 Udine
- 16080 Milano
- 16242 Roma

