

# Europäischer Wetterbericht European Meteorological Bulletin Bulletin Météorologique Européen Boletín Meteorológico Europeo

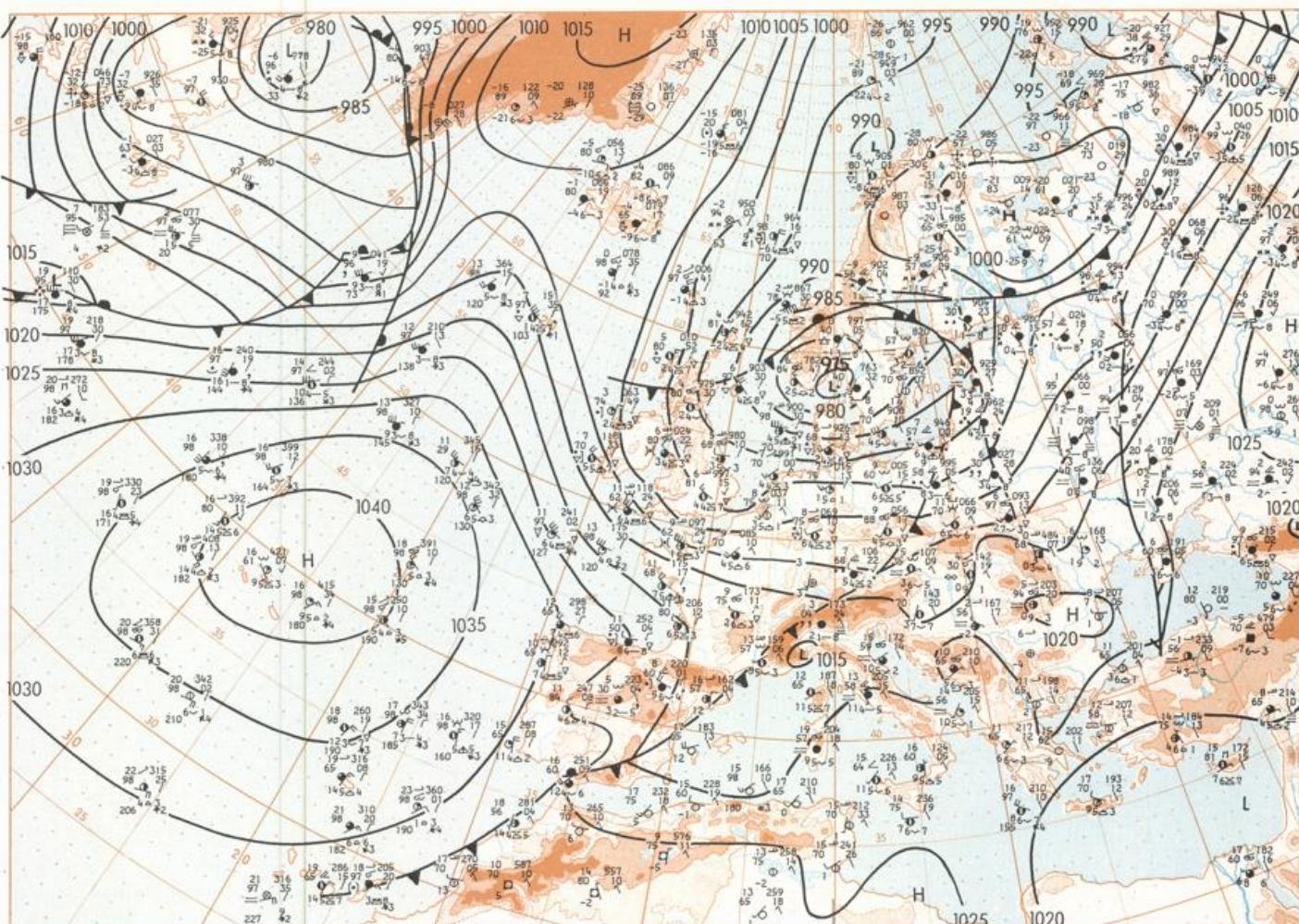
Amtsblatt des Deutschen Wetterdienstes

Druck und Verlag: Deutscher Wetterdienst — Zentralamt — D 6050 Offenbach am Main, Frankfurter Straße 135, Tel.: (0611) 80621

|  |  |                                    |   |
|--|--|------------------------------------|---|
| Erchaint täglich                             | Issued daily                             | Publié quotidiennement             | Se publica diariamente                                  |
| Bezugspreis monatlich einsch. Porto 30,00 DM | Monthly price including postage 30,00 DM | Prix mensuel port compris 30,00 DM | Precio de suscripción mensual incluyendo parte 30,00 DM |
| Nachdruck nicht gestattet                    | All rights reserved                      | Reproduction interdite             | Se prohíbe la reproducción                              |

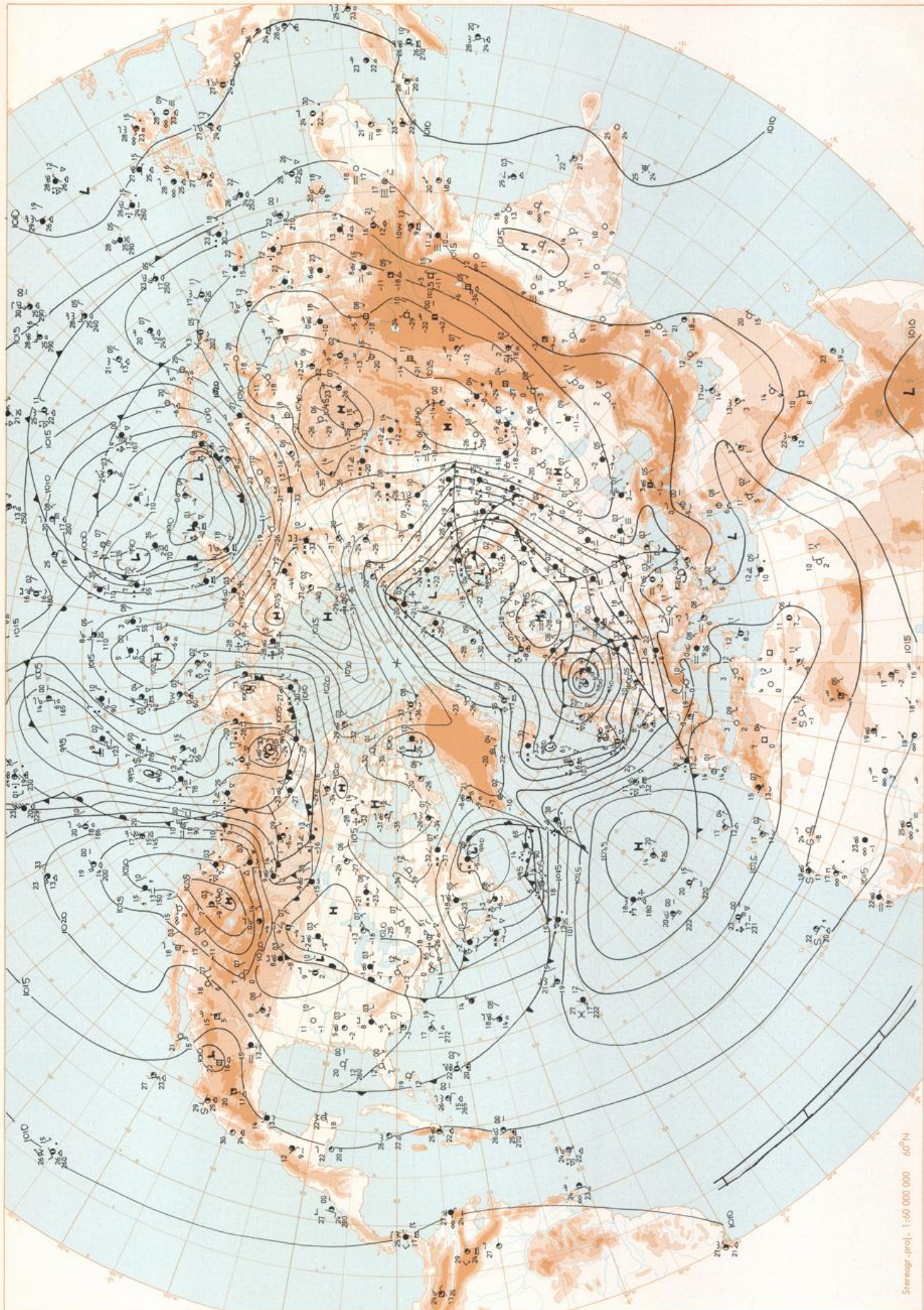
|   |                                    |            |                                      |
|---|------------------------------------|------------|--------------------------------------|
| Jahrgang<br>Volume<br>Volume<br>Volumen | Montag<br>Monday<br>Lundi<br>Lunes | 15.12.1980 | Number<br>Number<br>Número<br>Número |
| 5                                       |                                    |            | 350                                  |

|  |   |  |   |
|--|---|--|---|
| Inhalt<br>Badenwetterkarte Nordhemisphäre 00 MGT<br>Badenwetterkarte Nordhemisphäre 00 MGT<br>500 mbar-Fläche Nordhemisphäre 00 MGT<br>200 mbar-Fläche Nordhemisphäre 00 MGT<br>100 mbar-Fläche Nordhemisphäre 00 MGT<br>850 mbar 00 MGT, 700 mbar 00 MGT<br>Relative Topographie 500/1000 mbar 00 MGT<br>300 mbar 00 MGT<br>Tägliche Seendruckänderung 00 MGT<br>Tägliche Änderung relative Topographie 500/1000 mbar 00 MGT<br>Aerologische Diagramme 00 MGT | Contenu<br>Surface chart 12 GMT<br>Surface chart northern hemisphere 00 GMT<br>500 mbar surface northern hemisphere 00 GMT<br>200 mbar surface northern hemisphere 00 GMT<br>100 mbar surface northern hemisphere 00 GMT<br>850 mbar 00 GMT, 700 mbar 00 GMT<br>Thickness chart 500/1000 mbar 00 GMT<br>300 mbar 00 GMT<br>24 h surface pressure change 00 GMT<br>24 h thickness change 500/1000 mbar 00 GMT<br>Aerological diagrams 00 GMT | Contenu<br>Carte de surface à 12 TU<br>Carte de surface sur l'hémisphère nord à 00 TU<br>Surface 500 mbar sur l'hémisphère nord à 00 TU<br>Surface 200 mbar sur l'hémisphère nord à 00 TU<br>Surface 100 mbar sur l'hémisphère nord à 00 TU<br>850 mbar 00 TU, 700 mbar 00 TU<br>Carte d'épaisseur 500/1000 mbar 00 TU<br>300 mbar 00 TU<br>Variation de pression en 24 h (niveau mer) en mbar à 00 TU<br>Variation d'épaisseur 500/1000 mbar en 24 h 00 TU<br>Diagrammes aérologiques 00 TU | Contenido<br>Análisis en superficie a las 12 T.M.G.<br>Análisis en superficie hemisferio norte a las 00 T.M.G.<br>Topografía de la superficie de 500 mbar hemisferio norte a las 00 T.M.G.<br>Topografía de la superficie de 200 mbar hemisferio norte a las 00 T.M.G.<br>Topografía de la superficie de 100 mbar hemisferio norte a las 00 T.M.G.<br>850 mbar 00 T.M.G., 700 mbar 00 T.M.G.<br>Relativo 500/1000 mbar 00 T.M.G.<br>300 mbar 00 T.M.G.<br>Variación de la presión del suelo 24 h en mbar a las 00 T.M.G.<br>Variación de espesor 500/1000 mbar en 24 h 00 T.M.G.<br>Diagramas aerológicos 00 T.M.G. |
|--|---|--|---|



Stereogr. proj., 1:30 000 000

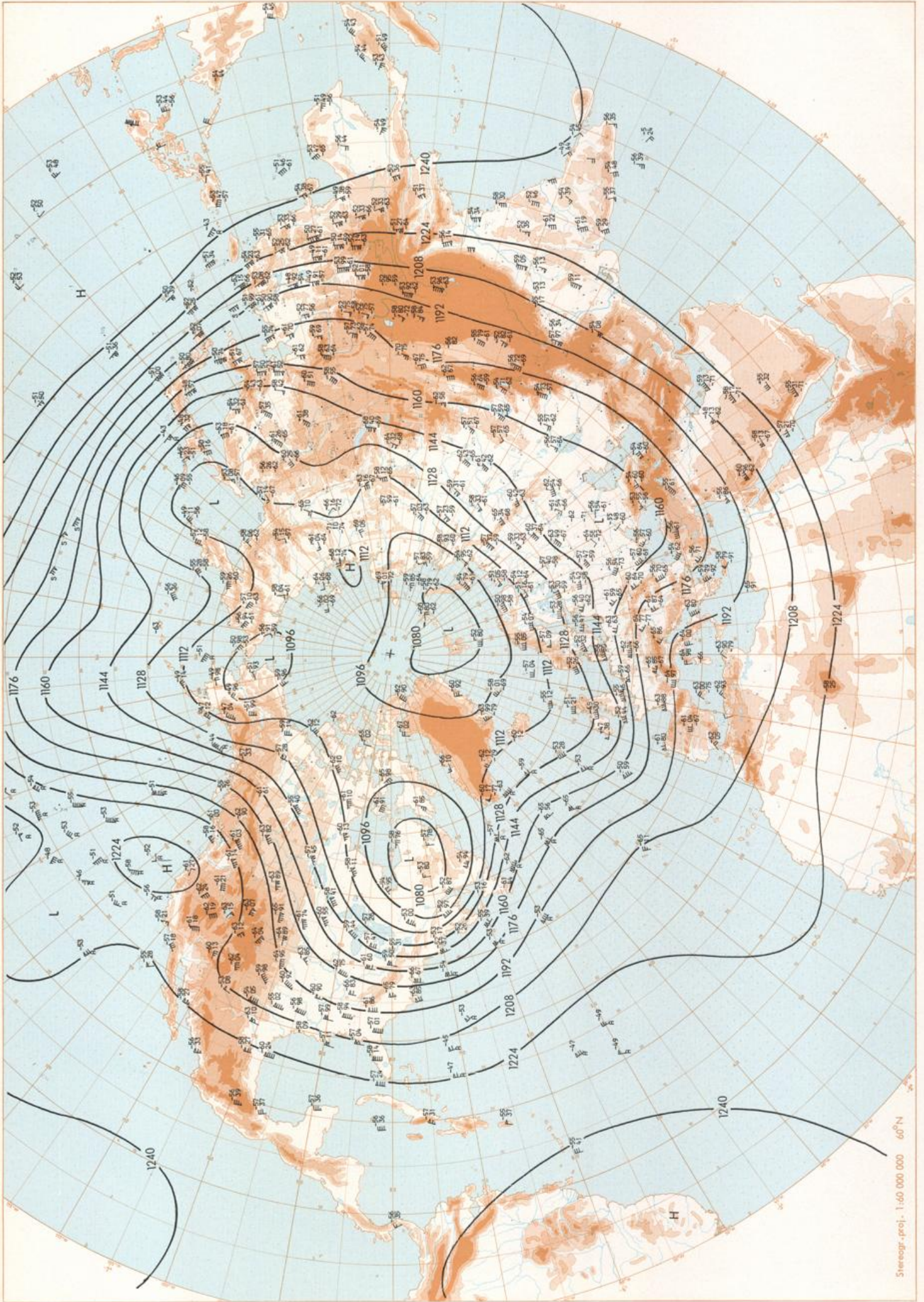
Surface chart 12 GMT



Surface chart 00 GMT

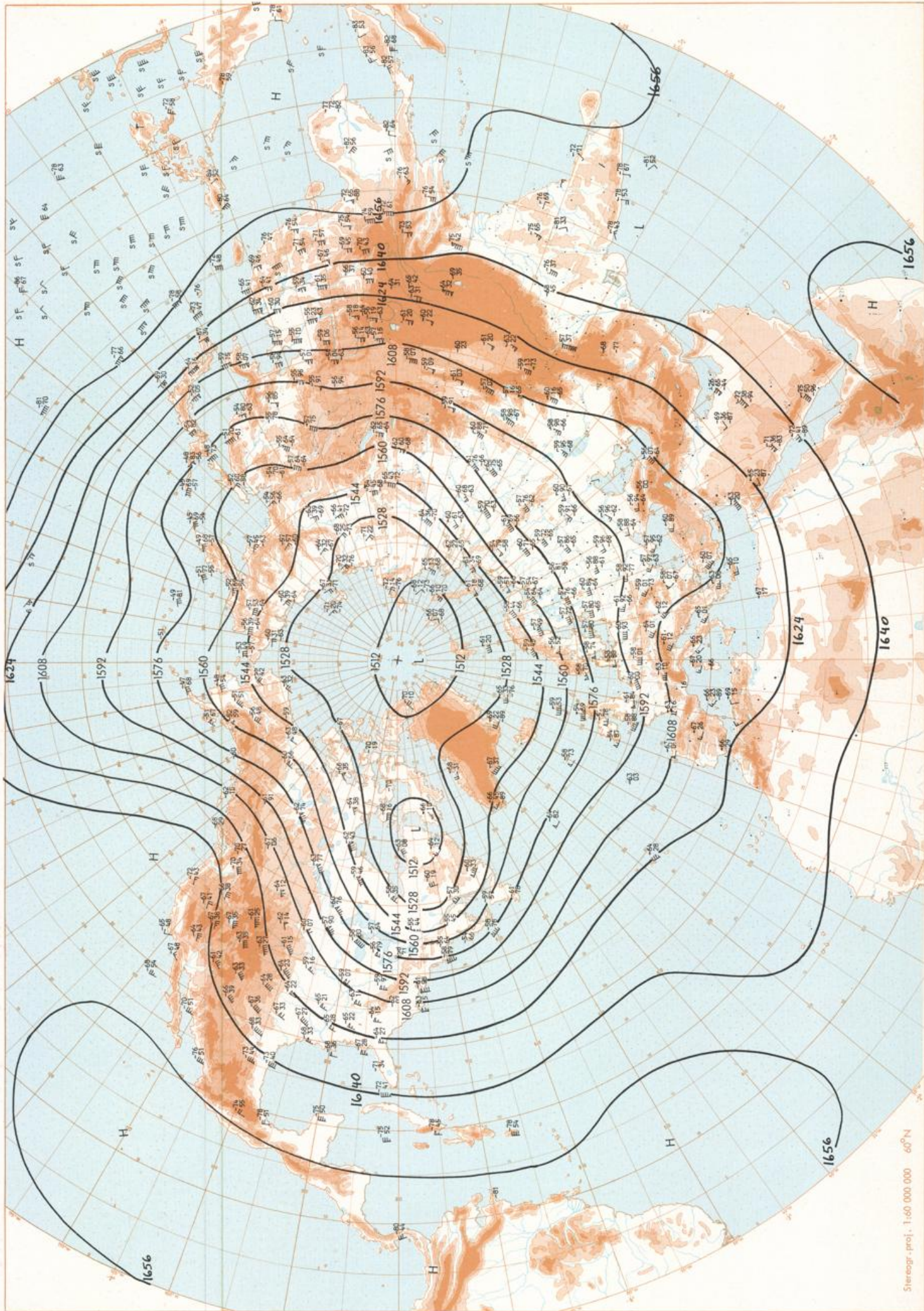
Stereogr.-proj. 1:60 000 000 60°N



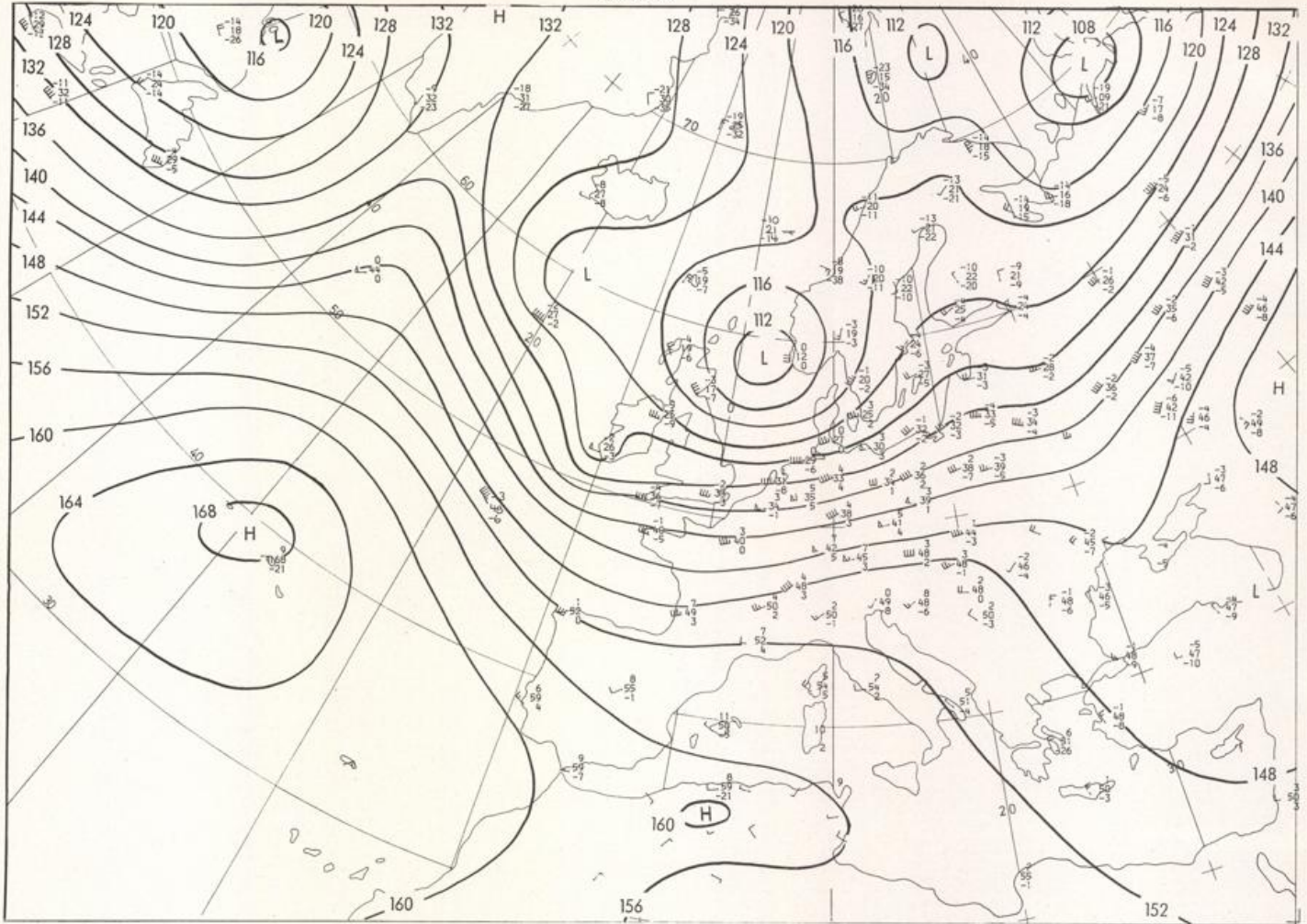


200 mbar OO GMT

Stereogr.-proj. 1:60 000 000 60°N

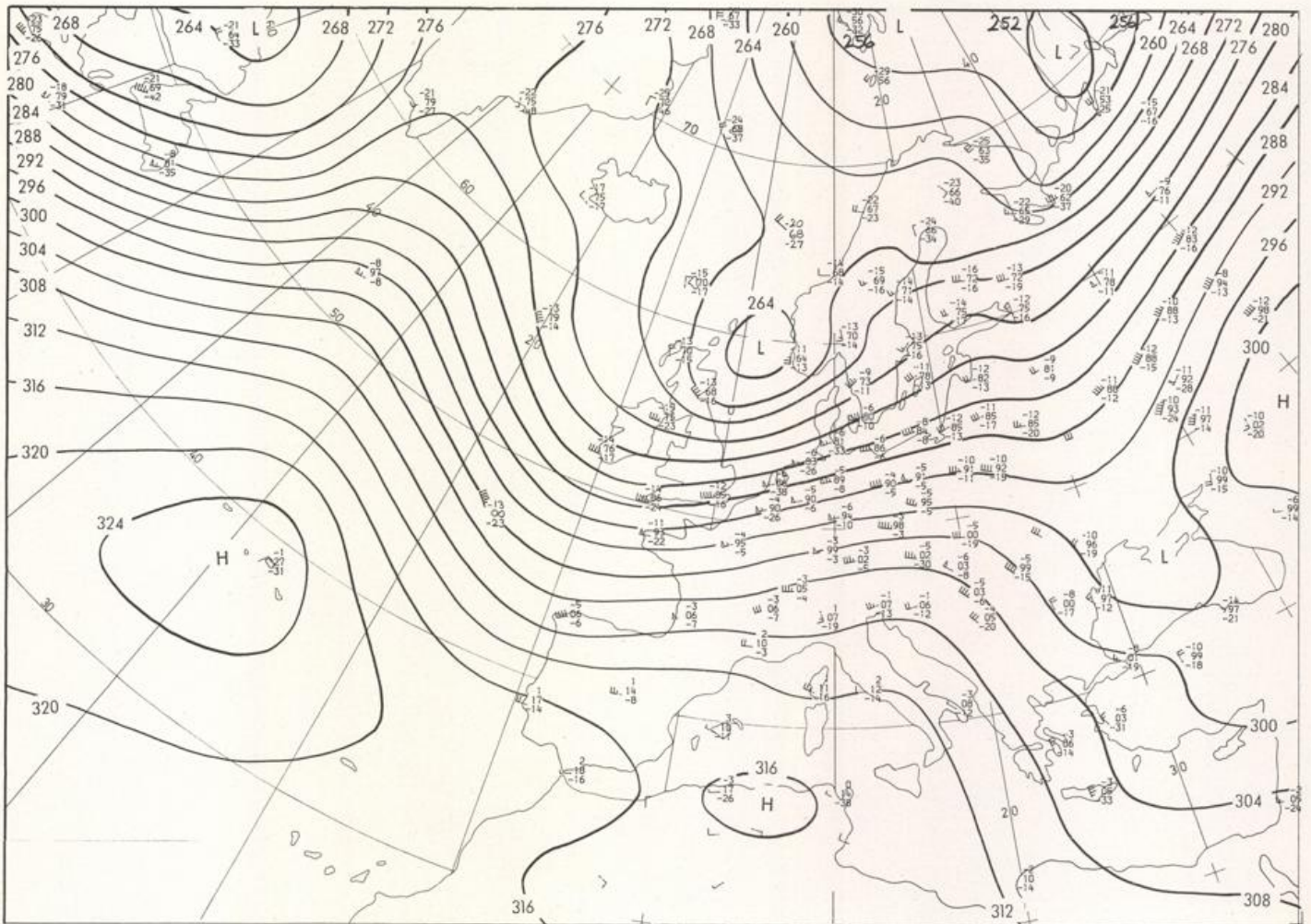


15.12.1980



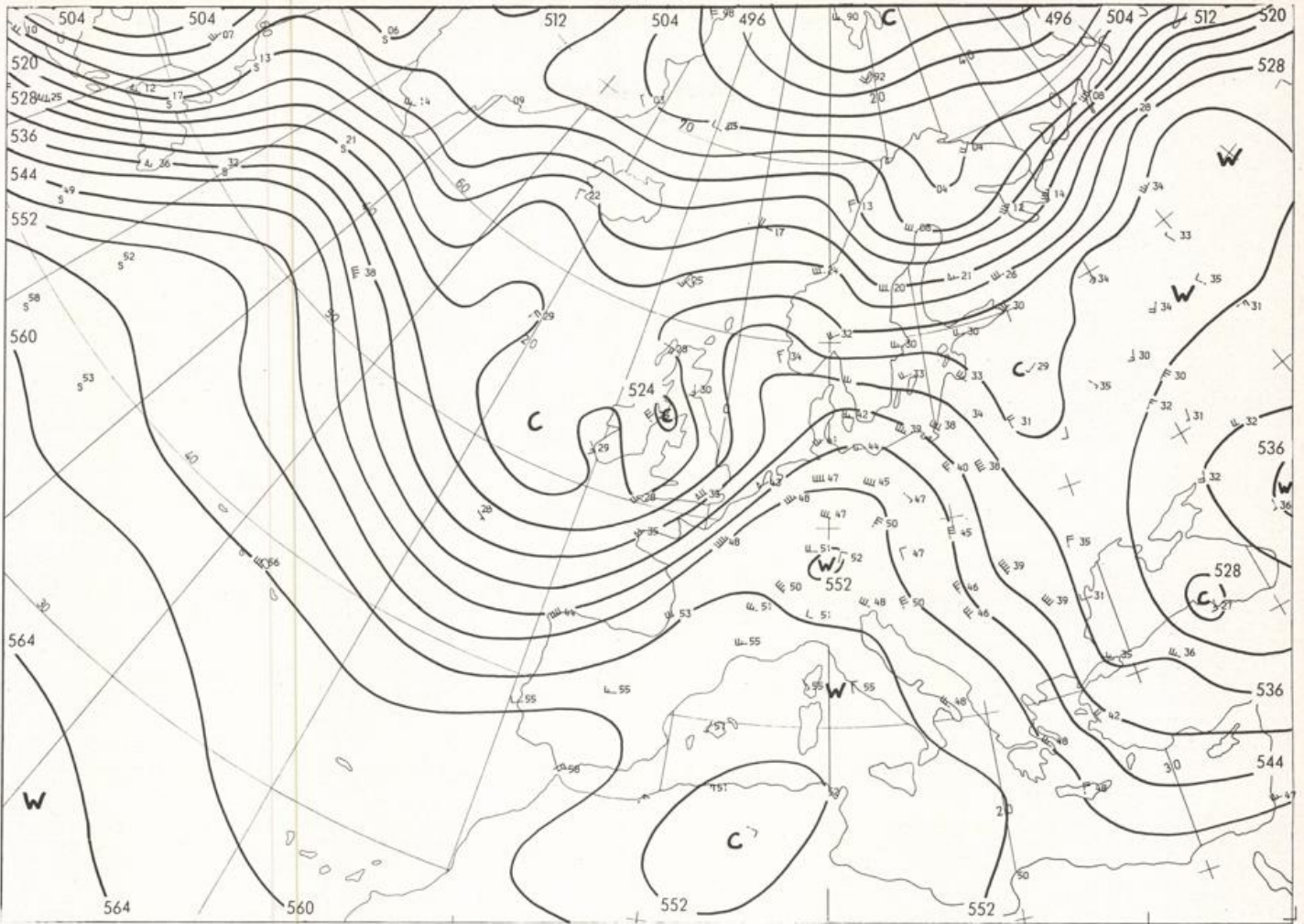
Stereogr. proj. 1:30 000 000 in 60°N

850 mbar OO GMT



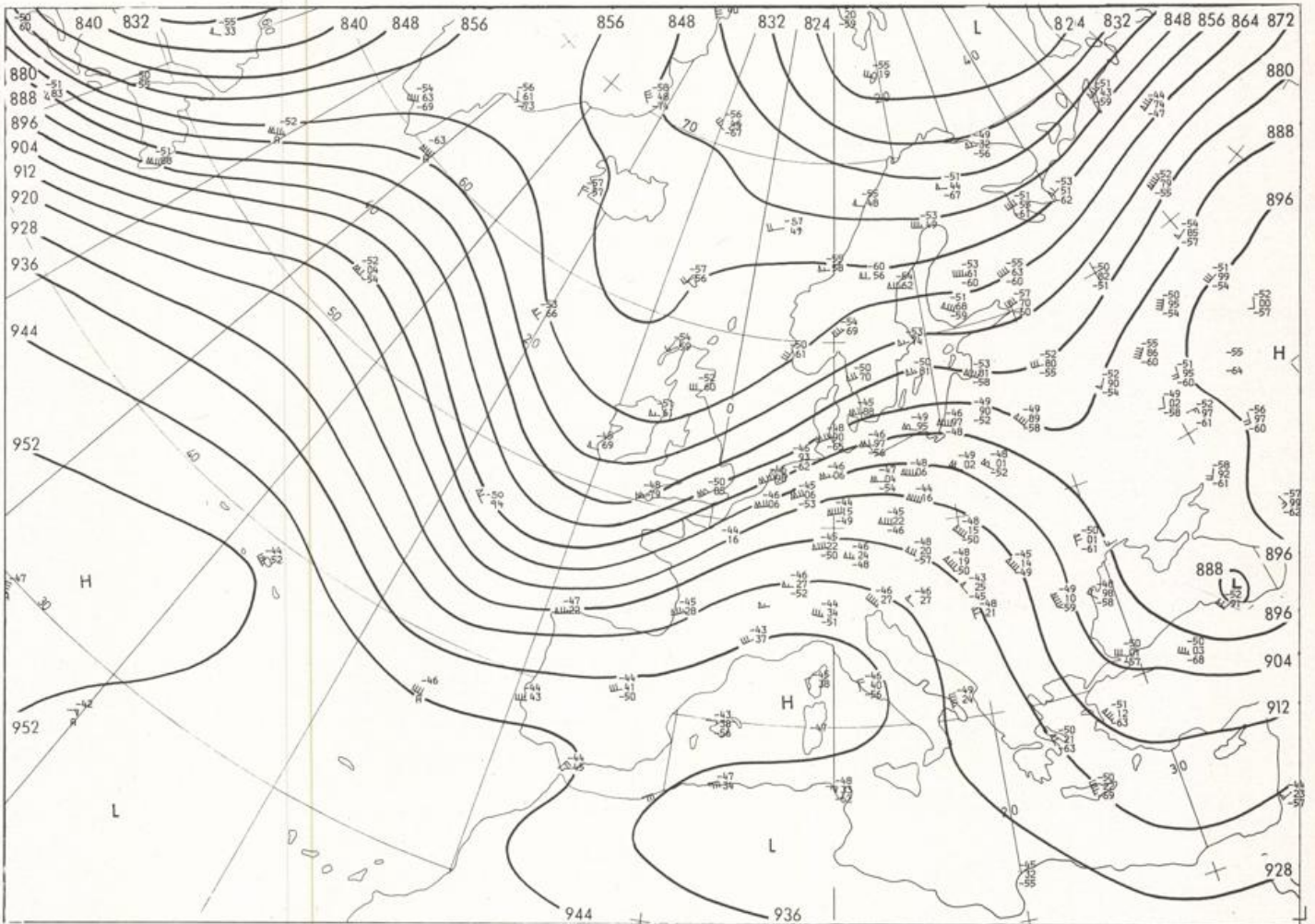
700 mbar OO GMT

15.12.1980



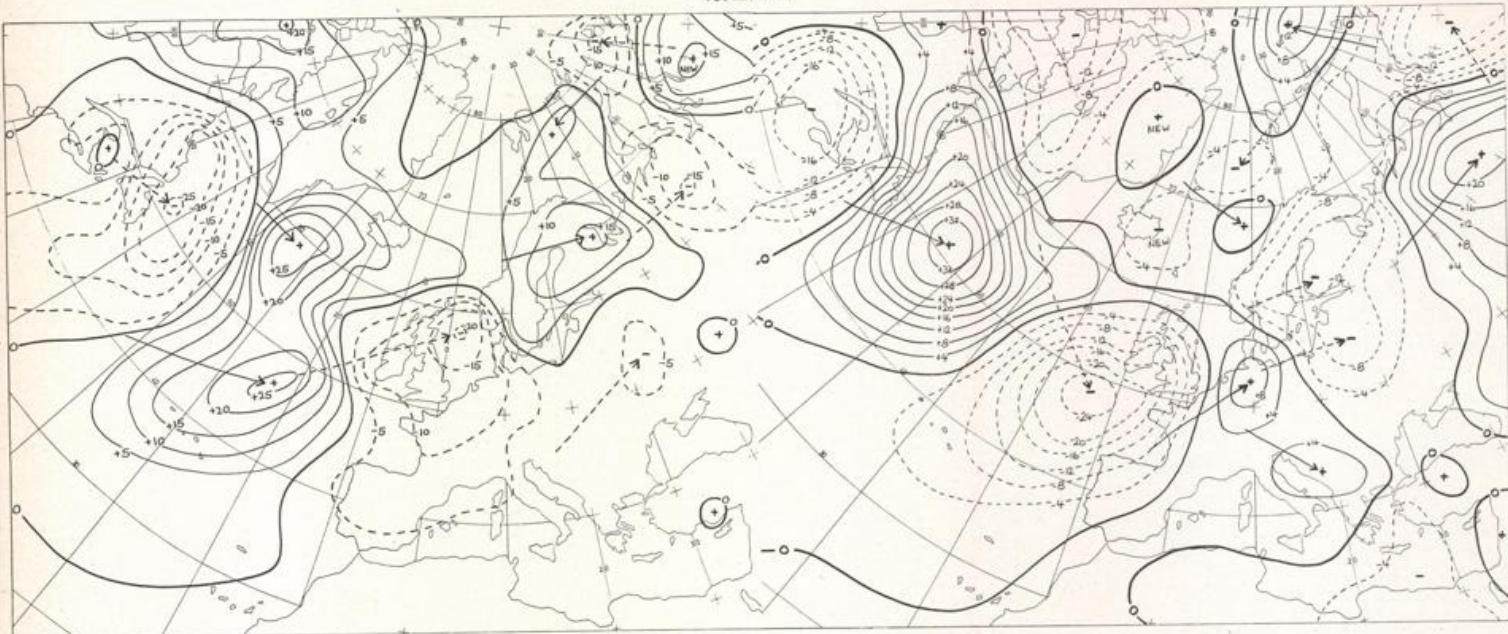
Stereogr. proj. 1:30 000 000 60°N

500/1000 mbar OO GMT



300 mbar OO GMT

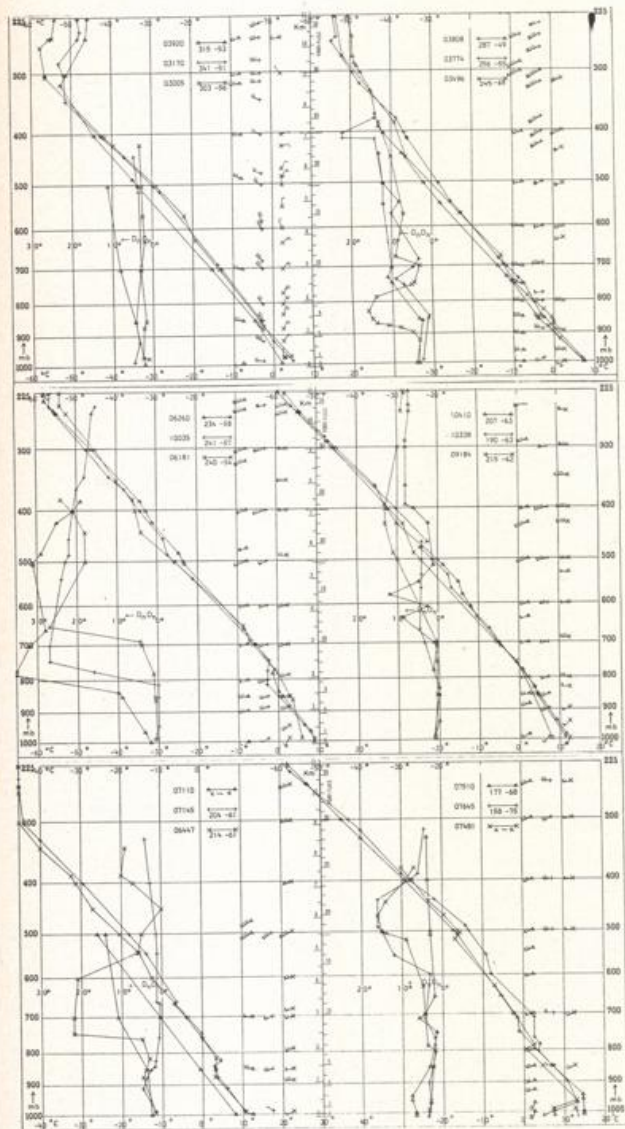
15.12.1980



24 hr surface pressure change OO GMT

Storogr.proj. 1:60 000 000

24 hr thickness change OO GMT



Aerological Diagrams OO GMT

- 01241 Orland
- 01384 Oslo
- 01415 Stavanger
- 02465 Stockholm
- 02327 Göteborg
- 03005 Lerwick
- 03170 Stanwell
- 03496 Hemsby
- 03774 Crawley
- 03808 Camborne
- 03920 Long Kesh
- 06181 København
- 06260 De Bilt
- 06447 Uccle
- 06610 Payerne
- 07110 Irsat
- 07145 Troppes
- 07481 Lyon
- 07510 Bordeaux
- 07645 Nîmes
- 09184 Greifswald
- 09393 Lindenberg
- 09548 Meiningen
- 10035 Schleswig
- 10338 Hannover
- 10410 Essen
- 10739 Stuttgart
- 10868 München-Oberschleißheim
- 11035 Wien
- 11520 Praha-Libus
- 12374 Legionowo
- 12843 Budapest
- 13275 Beograd
- 16044 Udine
- 16080 Milano
- 16242 Roma

