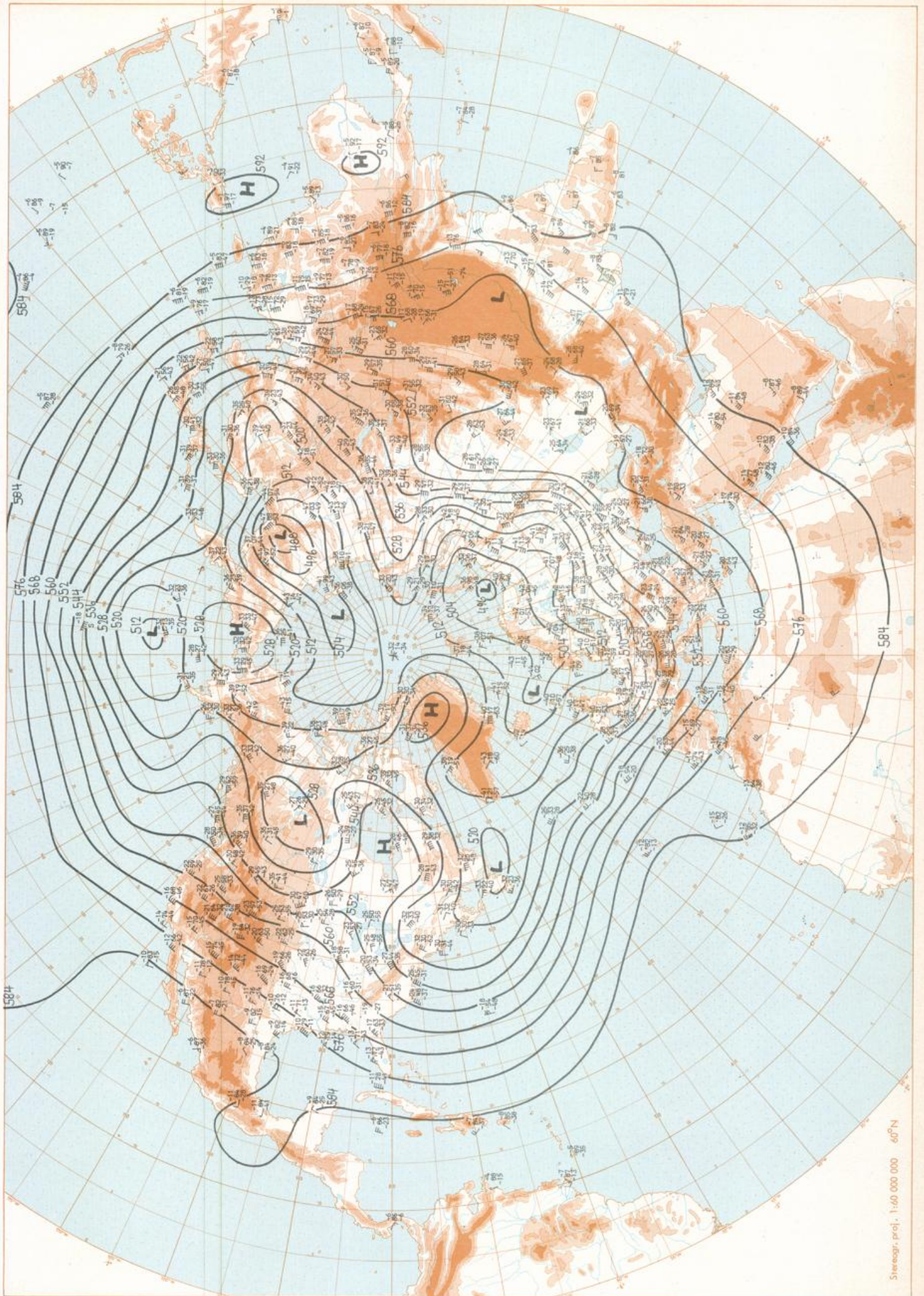


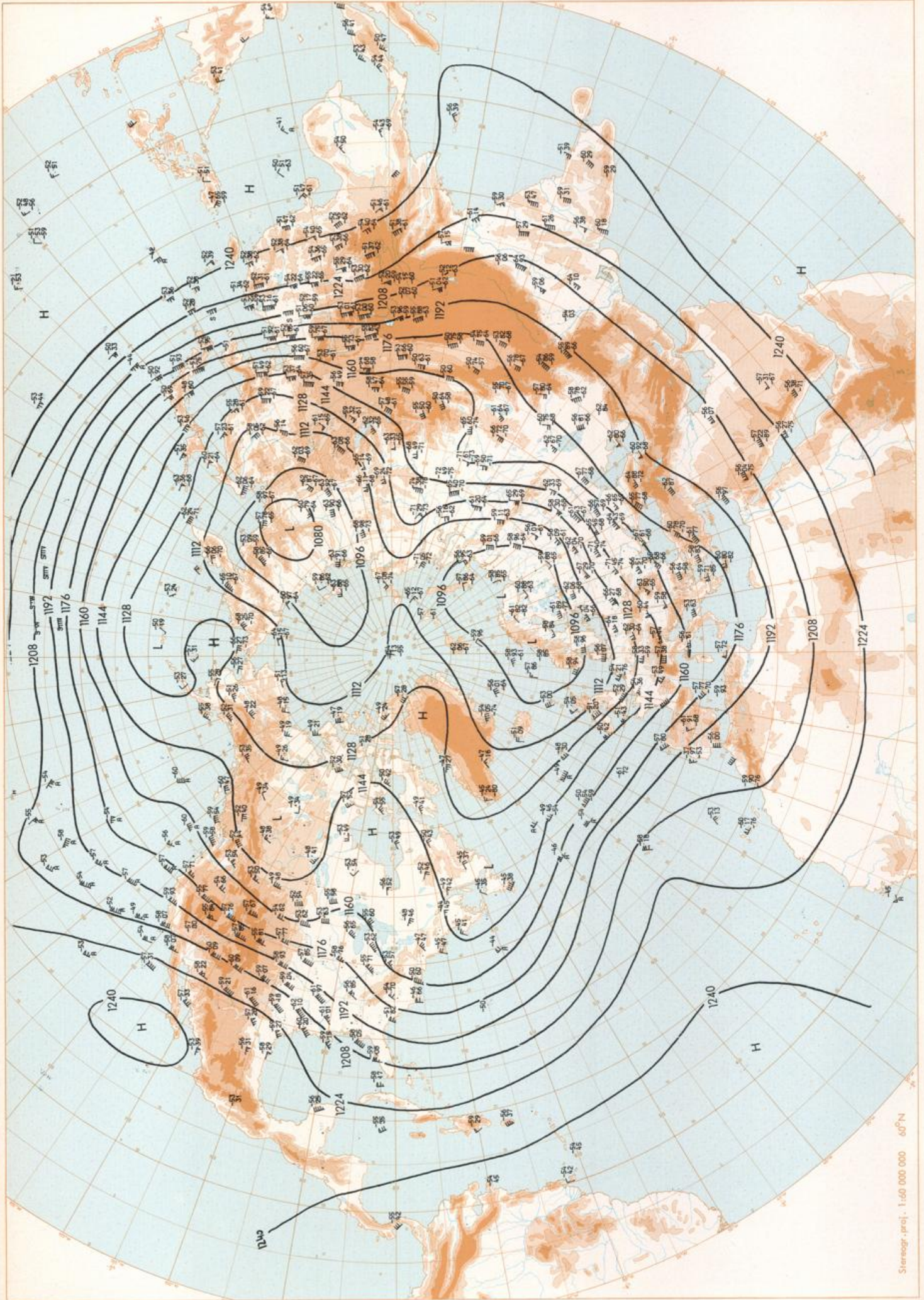
Scale: 1:40 000 000 60°N

Surface chart 00 GMT



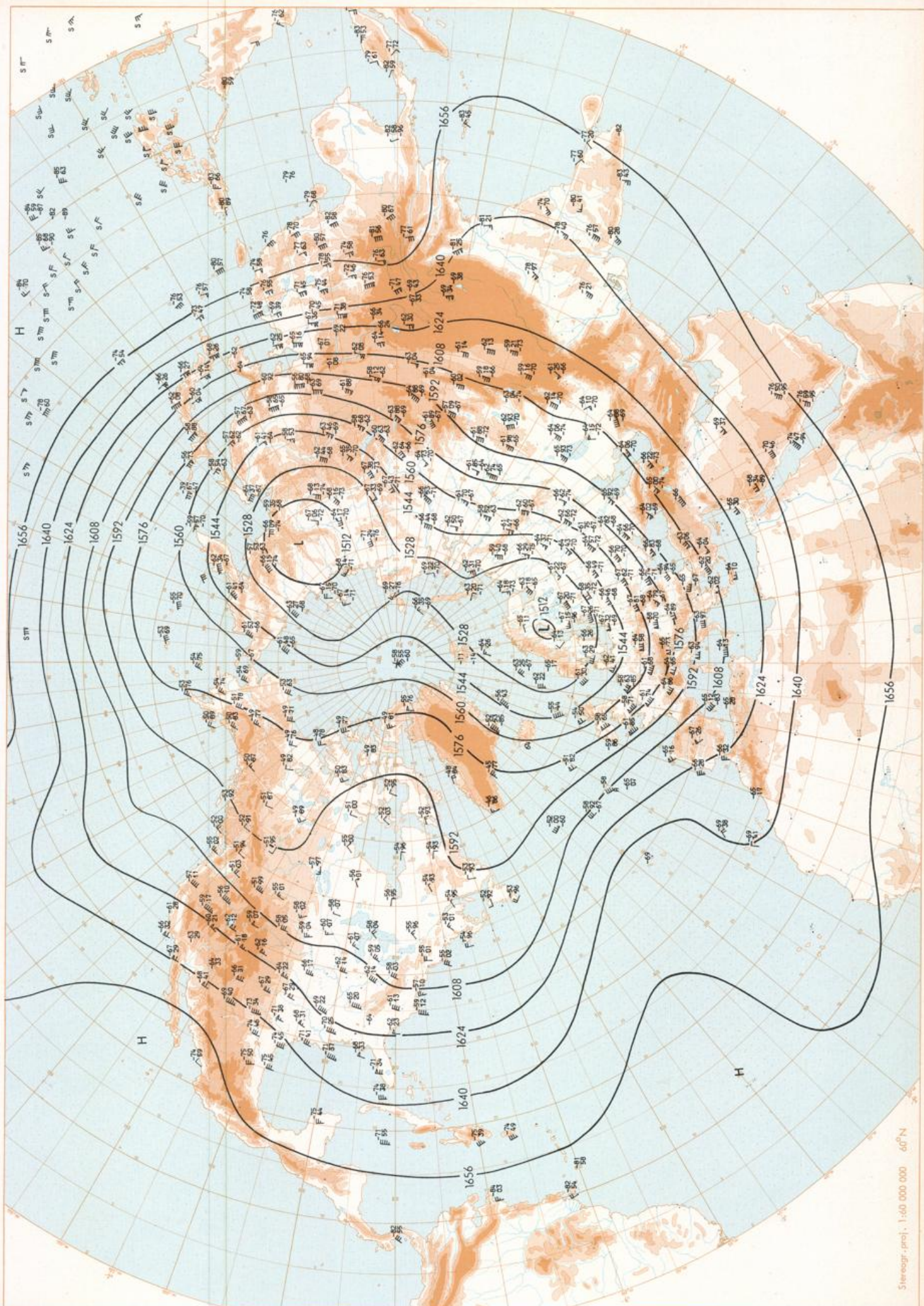
500 mbar OO GMT

Stereogr. proj. 1:60 000 000 60°N



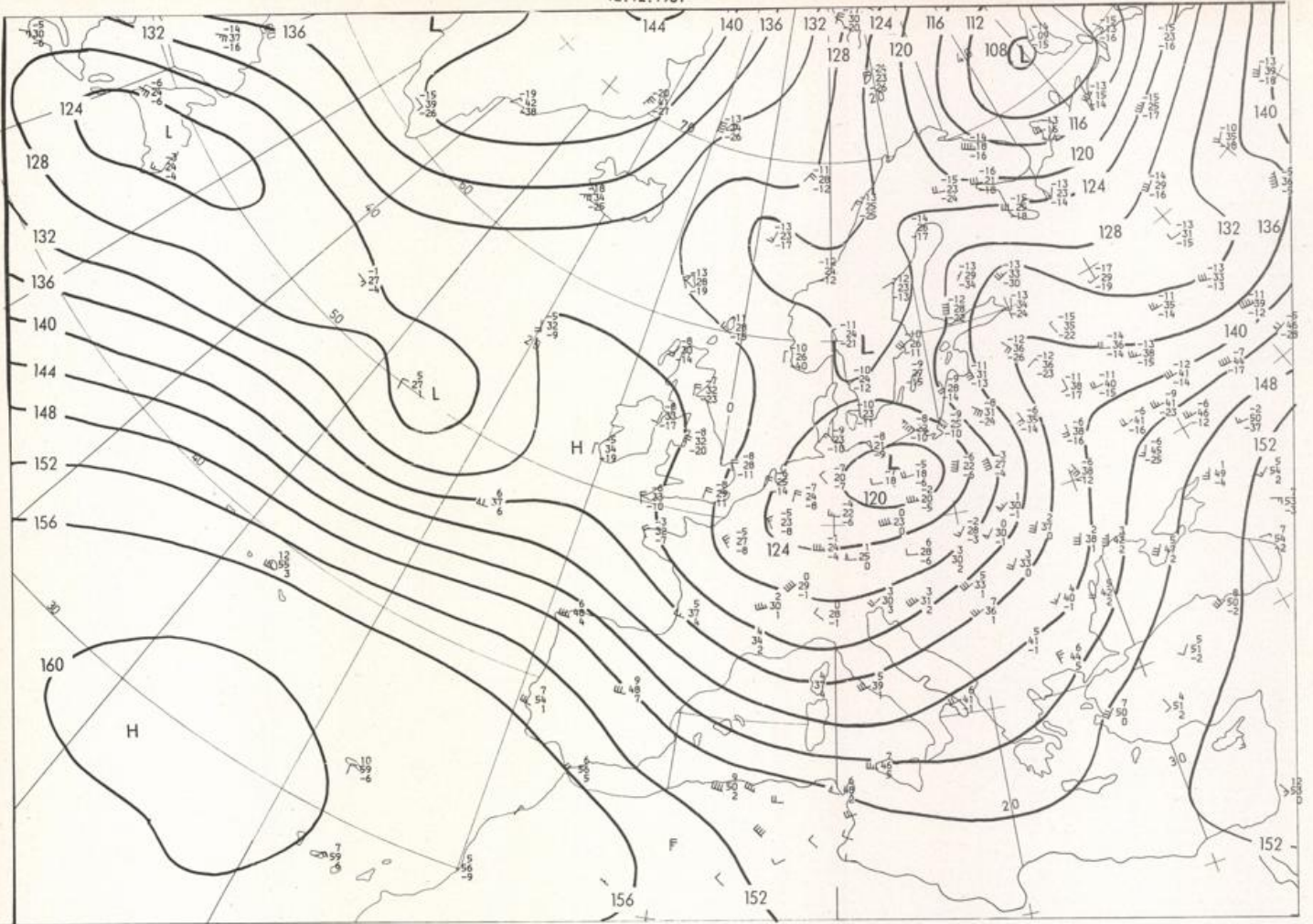
200 mbar ○ GMT

Stereogr. proj. 1:60 000 000 60°N



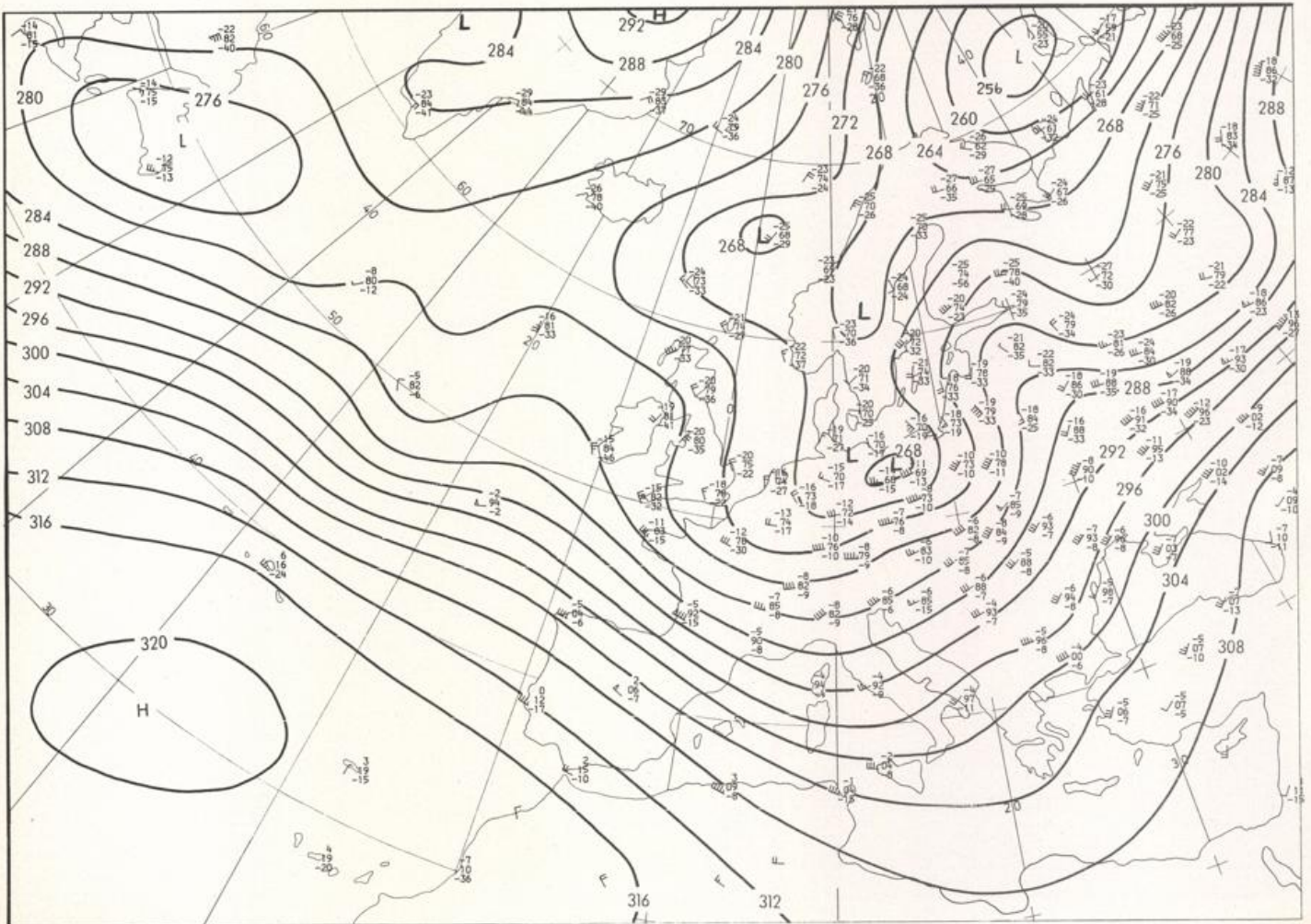
100 mbar OO GMT

12.12.1981



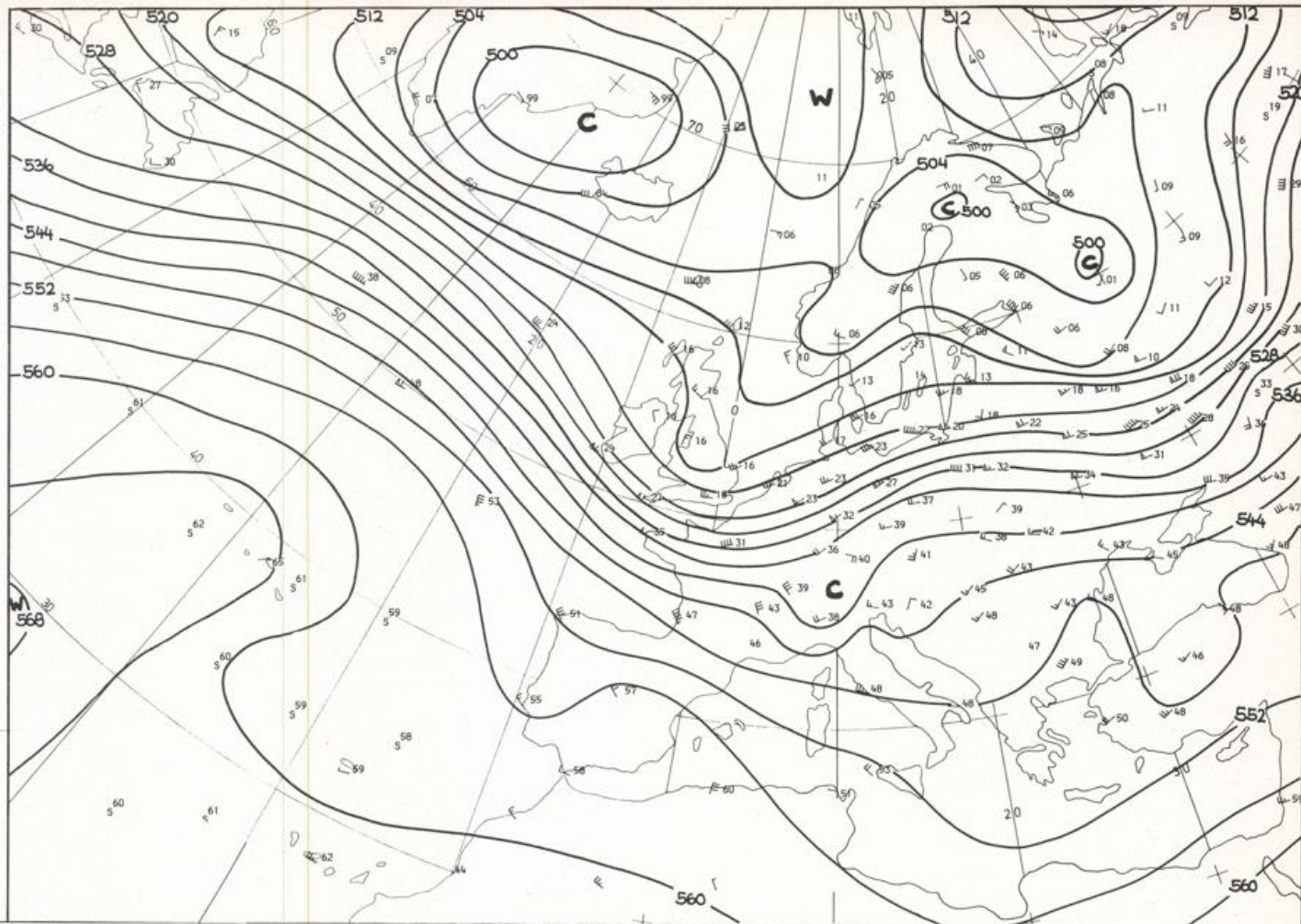
Stereogr. proj. 1:30 000 000 in 60°N

850 mbar OO GMT



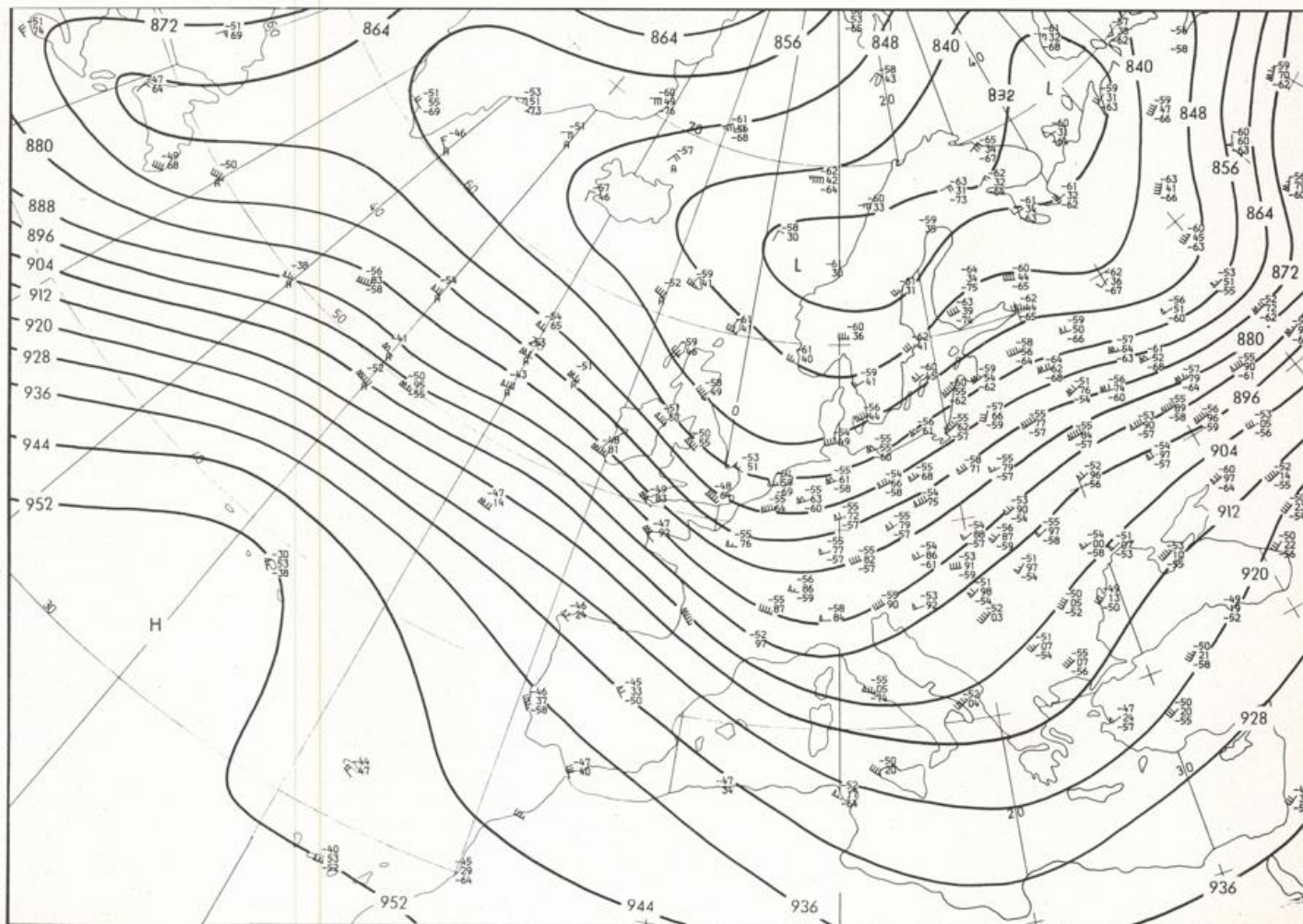
700 mbar OO GMT

12.12.1981

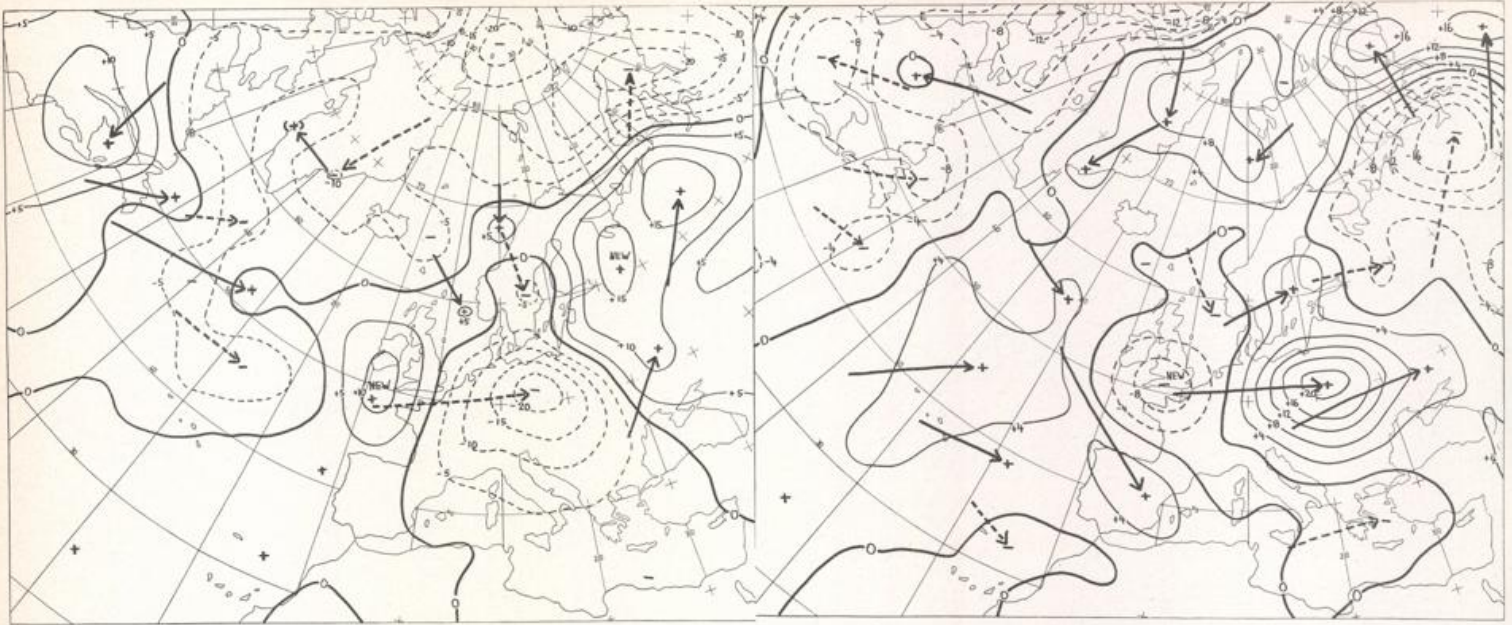


Stereogr.-proj. 1:30 000 000 60°N

500/1000 mbar OO GMT



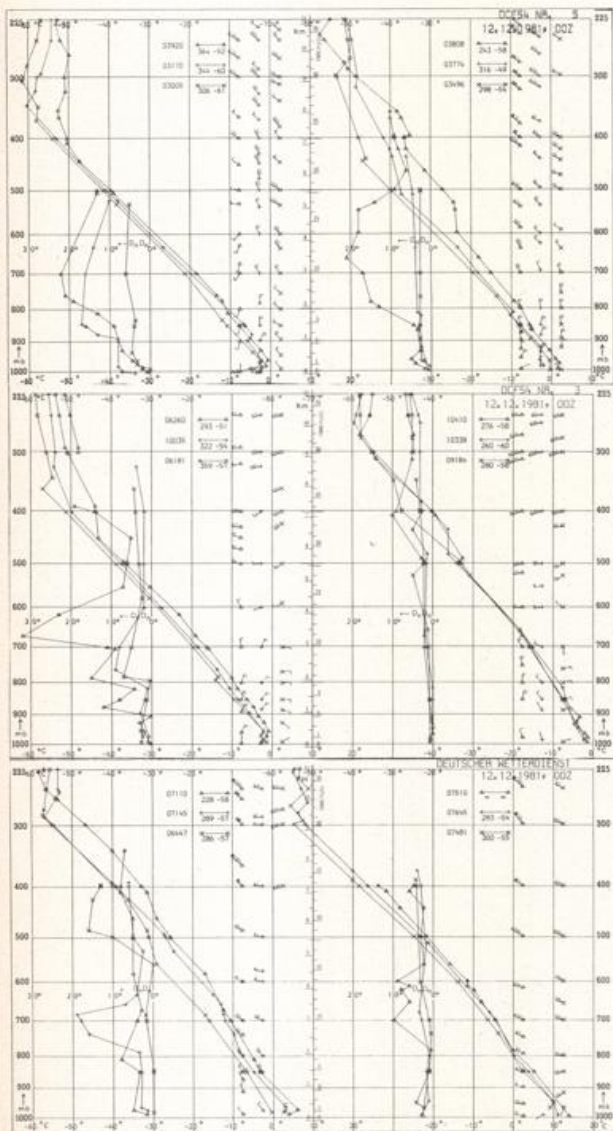
300 mbar OO GMT



24 hr surface pressure change OO GMT

Stereogr. proj.: 1:60 000 000

24 hr thickness change OO GMT



Aerological Diagrams 00 GMT

- 01241 Orland
- 01384 Oslo
- 01415 Stavanger
- 02465 Stockholm
- 02527 Goteborg
- 03005 Lerwick
- 03170 Shanwell
- 03496 Hamsby
- 03774 Crawley
- 03808 Camborne
- 03920 Long Kesh
- 06181 Kobenhavn
- 06260 De Bilt
- 06447 Uccle
- 06610 Payeme
- 07110 Brest
- 07145 Trappes
- 07481 Lyon
- 07510 Bordeaux
- 07645 Nimes
- 09184 Greifswald
- 09393 Lindenberg
- 09548 Meiningen
- 10035 Schleswig
- 10338 Hannover
- 10410 Essen
- 10739 Stuttgart
- 10868 München-Oberschleißheim
- 11035 Wien
- 11520 Praha-Libus
- 12374 Legionowo
- 12843 Budapest
- 13275 Beograd
- 16044 Udine
- 16080 Milano
- 16242 Roma

