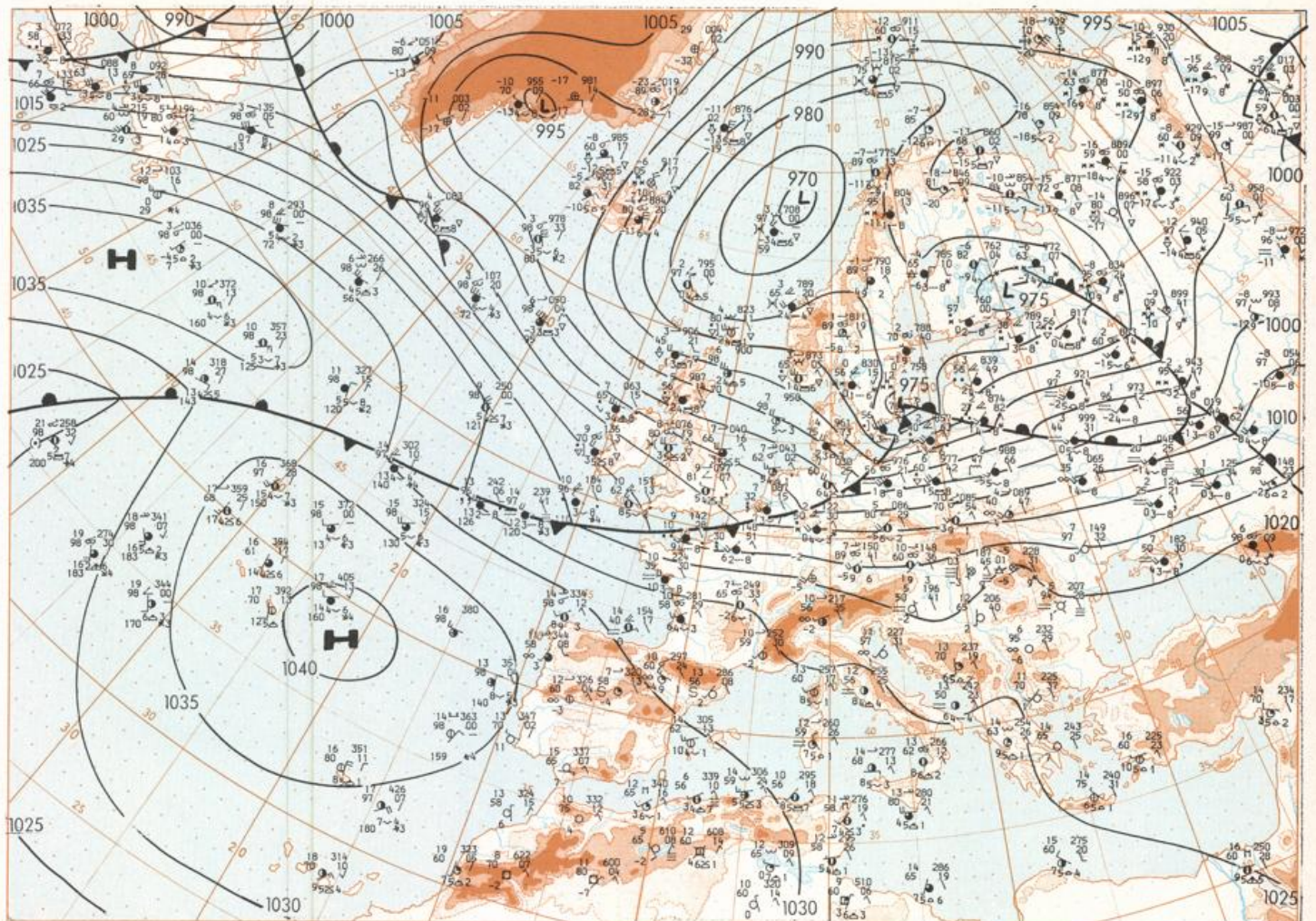


# Europäischer Wetterbericht European Meteorological Bulletin Bulletin Météorologique Européen Boletín Meteorológico Europeo

Amtsblatt des Deutschen Wetterdienstes

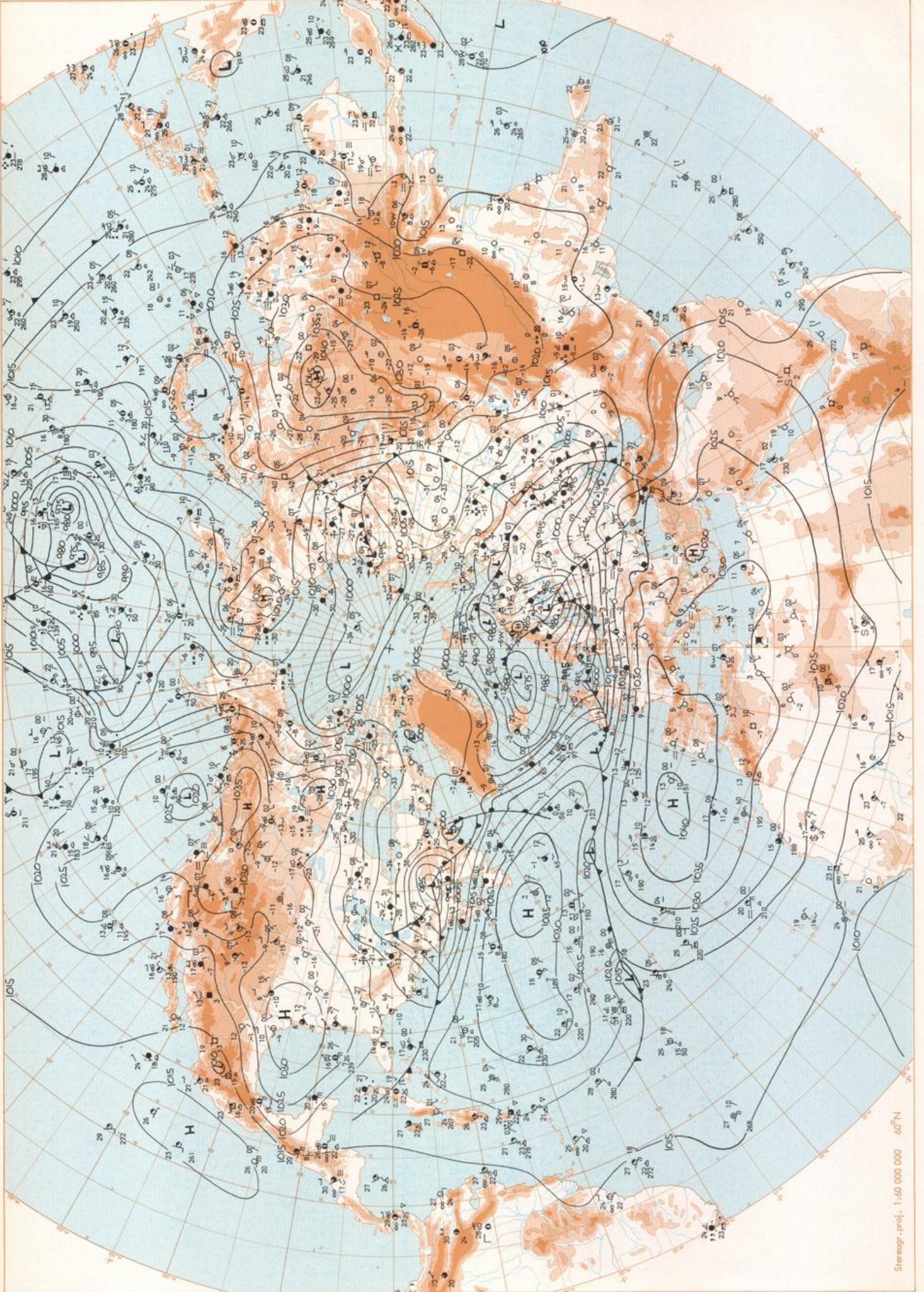
Druck und Verlag: Deutscher Wetterdienst — Zentralamt — D 6050 Offenbach am Main, Frankfurter Straße 135, Tel.: (0611) 80621

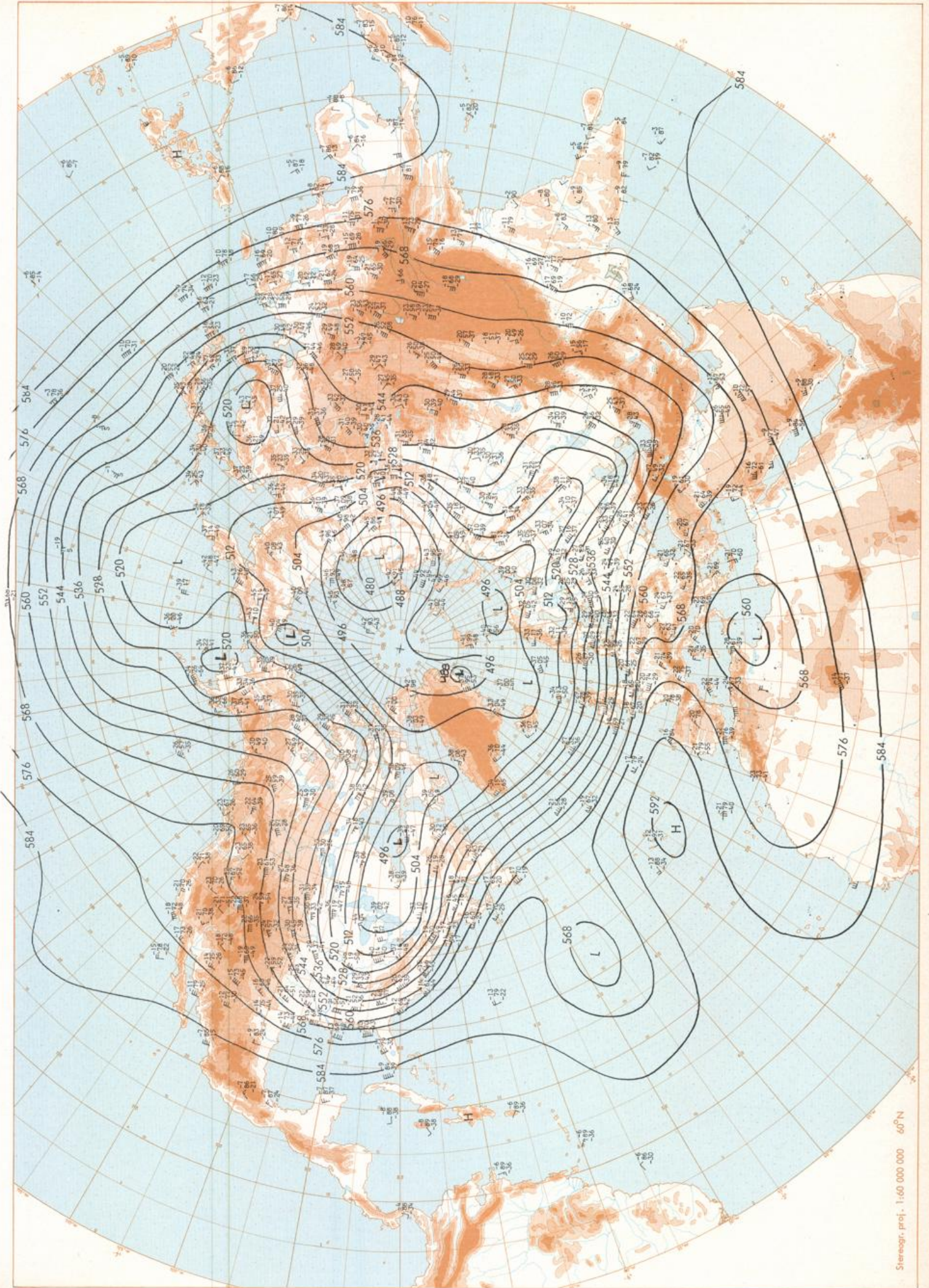
|  |   |  |  |
|--|---|--|--|
| Er erscheint täglich<br>Bezugspreis monatlich 30,00 DM<br>zuzügl. Porto<br>Nachdruck nicht gestattet   | Issued daily<br>Monthly price 30,00 DM<br>plus postage<br>All rights reserved   | Publié quotidiennement<br>Prix mensuel 30,00 DM<br>plus port<br>Reproduction interdite   | Se publica diariamente<br>Precio de suscripción mensual 30,00 DM<br>plus porte<br>Se prohíbe la reproducción   |
| Jahrgang<br>Volume<br>Volume<br>Volumen  | <b>6</b>  | Dienstag<br>Tuesday<br>Mardi<br>Martes   | Nummer<br>Number<br>Número<br>Número   |
| Inhalt   | Content   | Contenu  | Contenido  |
| Bodenwetterkarte 12 MGZ<br>Bodenwetterkarte Nordhemisphäre 00 MGZ<br>500-mbar-Fläche Nordhemisphäre 00 MGZ<br><br>200-mbar-Fläche Nordhemisphäre 00 MGZ<br><br>100-mbar-Fläche Nordhemisphäre 00 MGZ<br><br>500 mbar 00 MGZ, 700 mbar 00 MGZ<br>Relative Topographie 500/1000 mbar 00 MGZ<br>300 mbar 00 MGZ<br>24stg. Spätdruckänderung 00 MGZ<br>24stg. Änderung relative Topographie<br>500/1000 mbar 00 MGZ<br><br>Aerologische Diagramme 00 MGZ | Surface chart 12 GMT<br>Surface chart northern hemisphere 00 GMT<br>500 mbar surface northern hemisphere 00 GMT<br><br>300 mbar surface northern hemisphere 00 GMT<br><br>100 mbar surface northern hemisphere 00 GMT<br><br>500 mbar 00 GMT, 700 mbar 00 GMT<br>Thickness chart 500/1000 mbar 00 GMT<br>300 mbar 00 GMT<br>24 hr surface pressure change 00 GMT<br>24 hr thickness change<br>500/1000 mbar 00 GMT<br><br>Aerological diagrams 00 GMT | Carte de surface à 12 TU<br>Carte de surface sur l'hémisphère nord à 00 TU<br>Surface 500 mbar sur l'hémisphère nord à 00 TU<br><br>Surface 300 mbar sur l'hémisphère nord à 00 TU<br><br>Surface 100 mbar sur l'hémisphère nord à 00 TU<br><br>500 mbar 00 TU, 700 mbar 00 TU<br>Carte d'épaisseur 500/1000 mbar 00 TU<br>300 mbar 00 TU<br>Variations de pression en 24 h (niveau: mer)<br>en mbar à 00 TU<br>Variations d'épaisseur 500/1000 mbar<br>en 24 h 00 TU<br><br>Diagrammes aérologiques 00 TU | Análisis en superficie a los 12 T.M.G.<br>Análisis en superficie hemisferio norte a los 00 T.M.G.<br>Topografía de la superficie de 500 mbar hemisferio norte a los 00 T.M.G.<br><br>Topografía de la superficie de 300 mbar hemisferio norte a los 00 T.M.G.<br><br>Topografía de la superficie de 100 mbar hemisferio norte a los 00 T.M.G.<br><br>500 mbar 00 T.M.G., 700 mbar 00 T.M.G.<br>Relativo 500/1000 mbar 00 T.M.G.<br>300 mbar 00 T.M.G.<br>Variación de la presión del suelo 24 h en mbar a los 00 T.M.G.<br>Variación de espesor 500/1000 mbar en 24 h 00 T.M.G.<br><br>Diagramas aerológicos 00 T.M.G. |



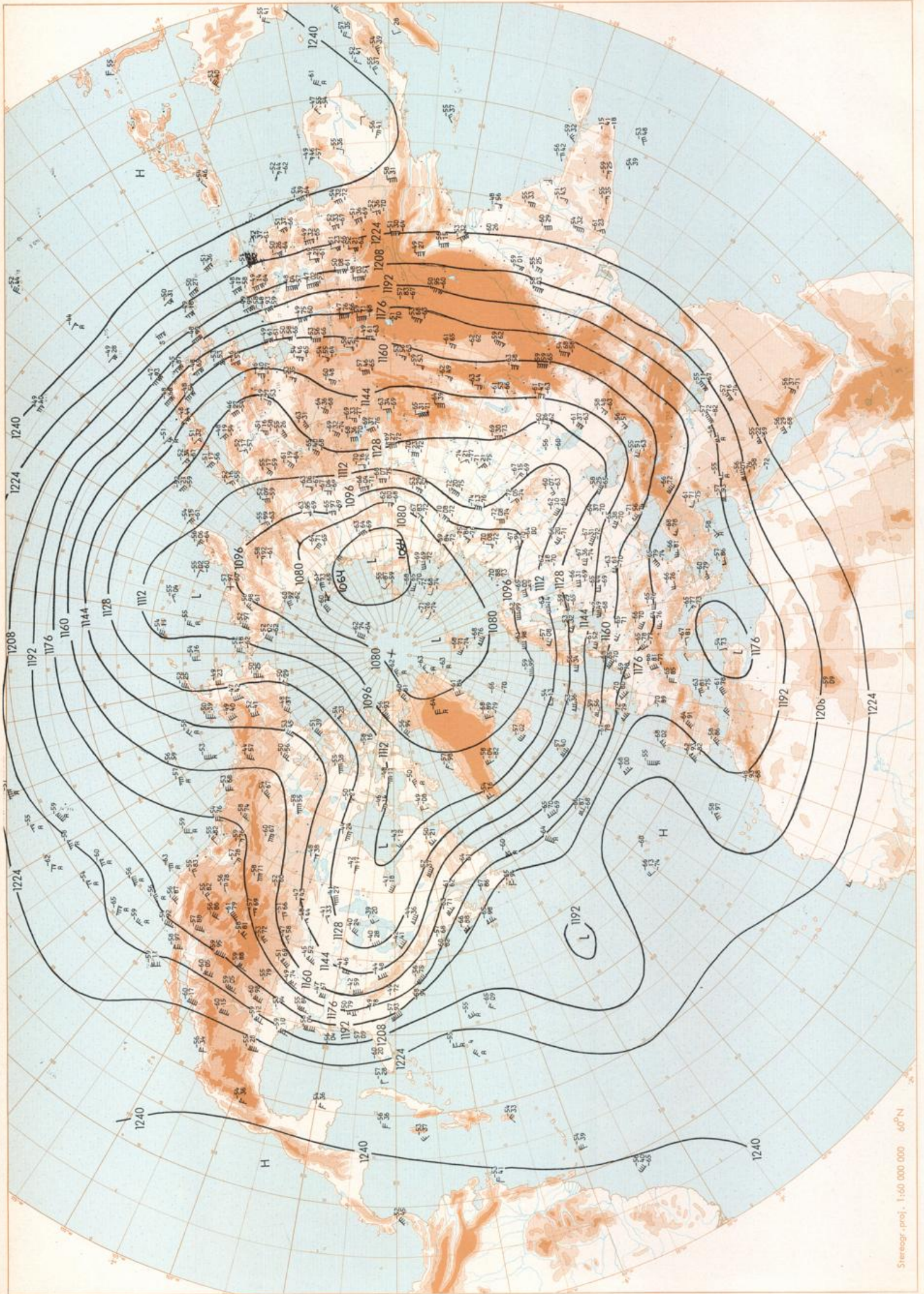
Stereogr. proj. 1:30 000 000 60°N

Surface chart 12 GMT





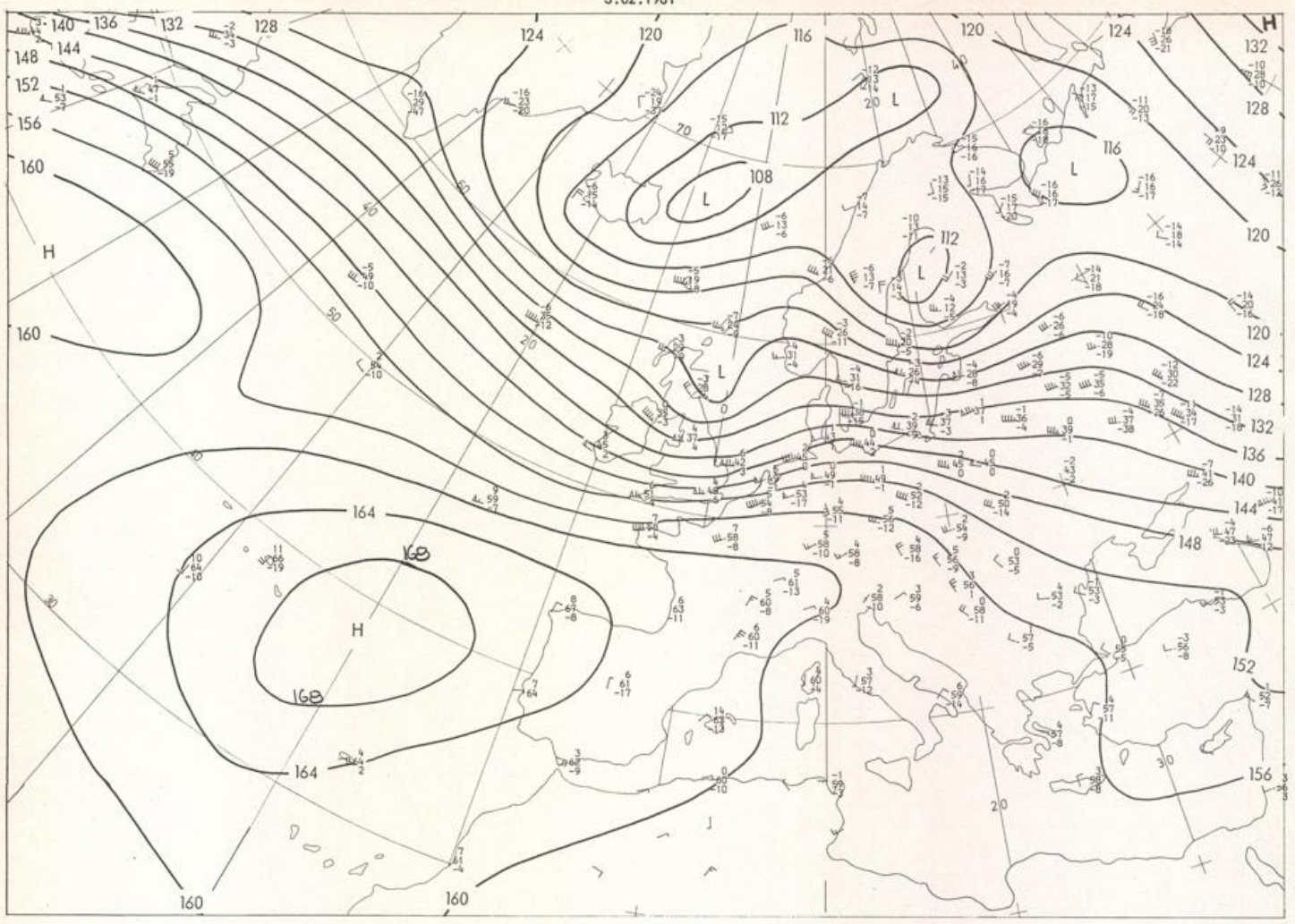
500 mbar OO GMT



200 mbar OO GMT

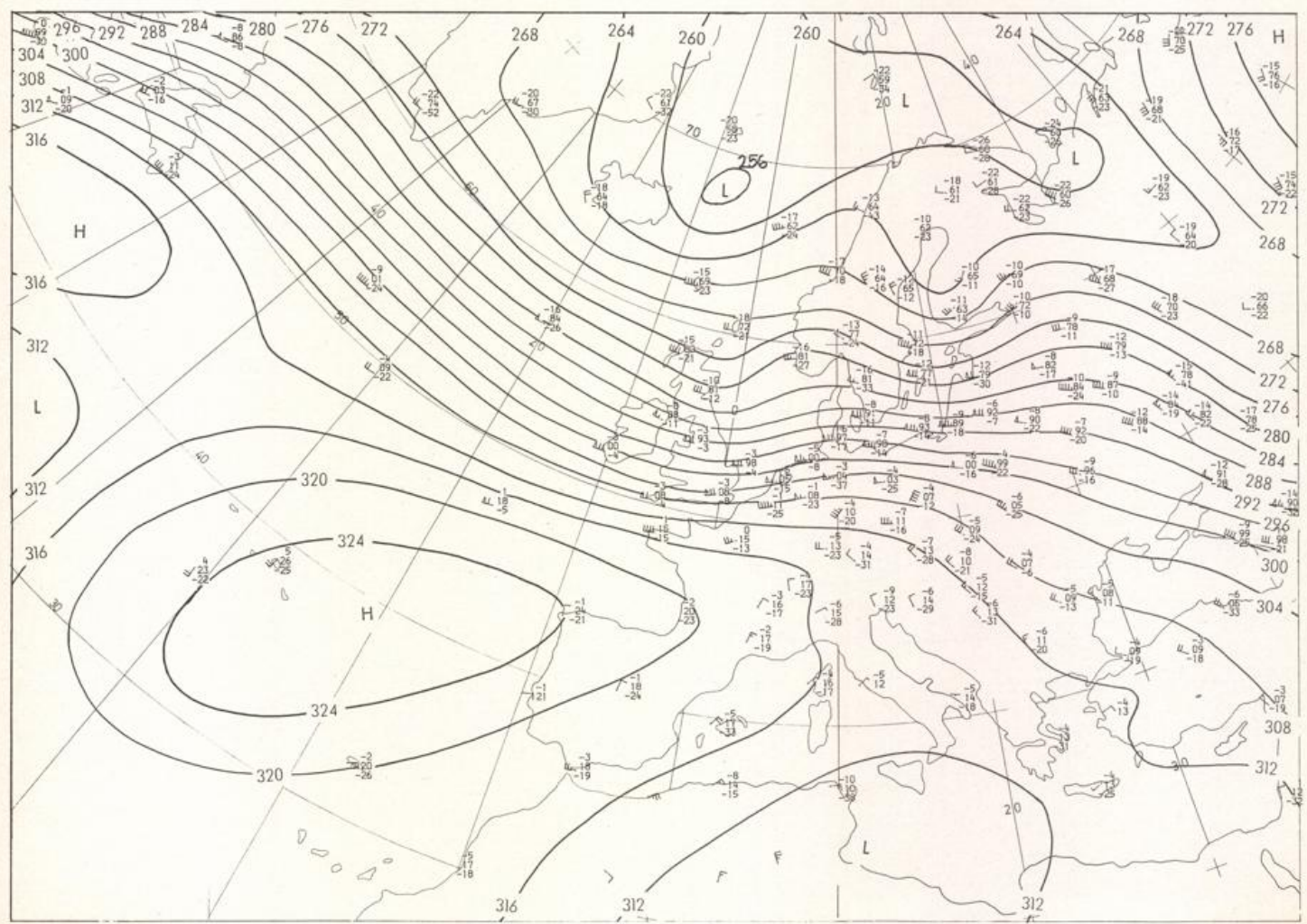


3.02.1981



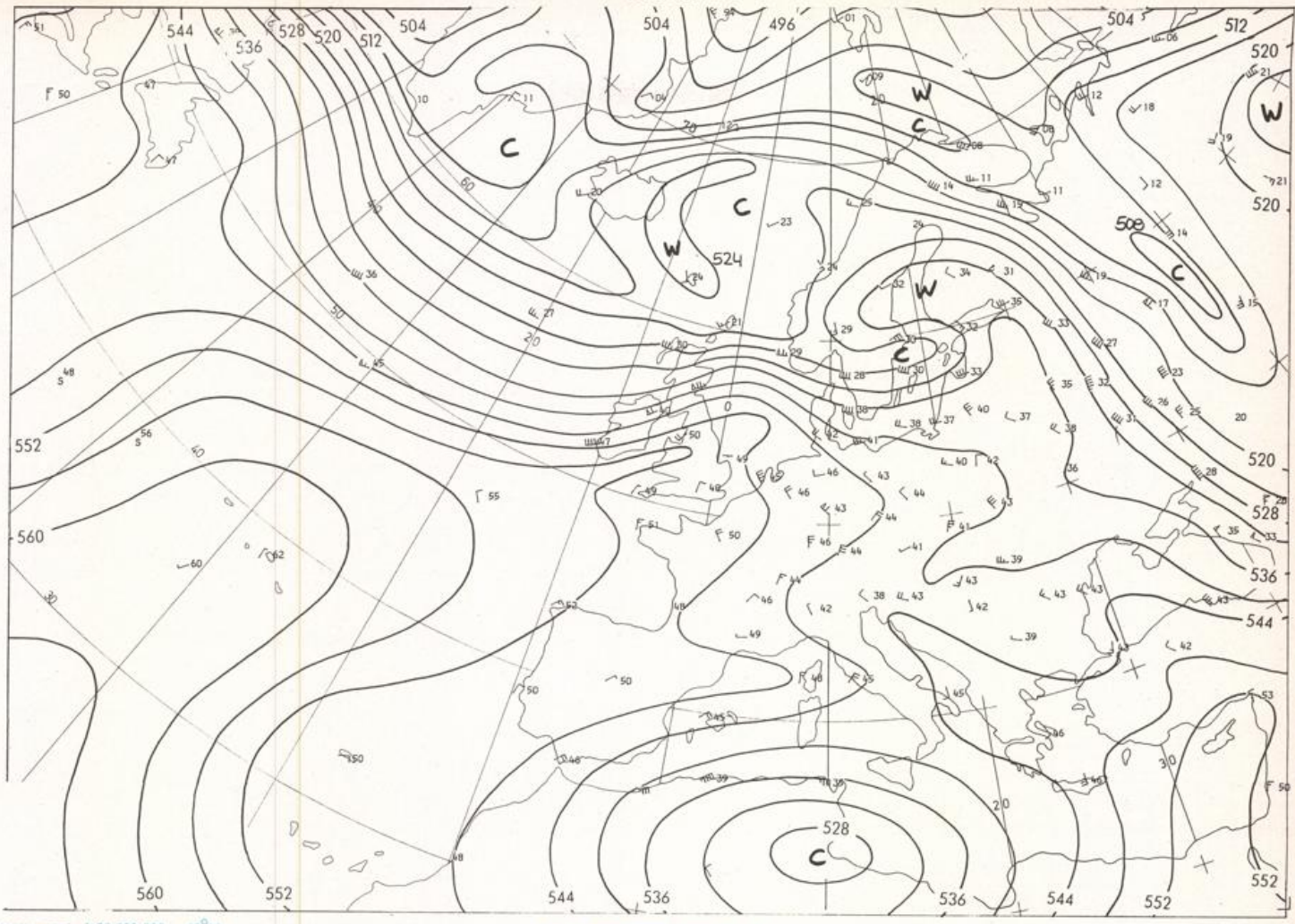
Stereogr. proj. 1:30 000 000 in 60°N

850 mbar 00 GMT



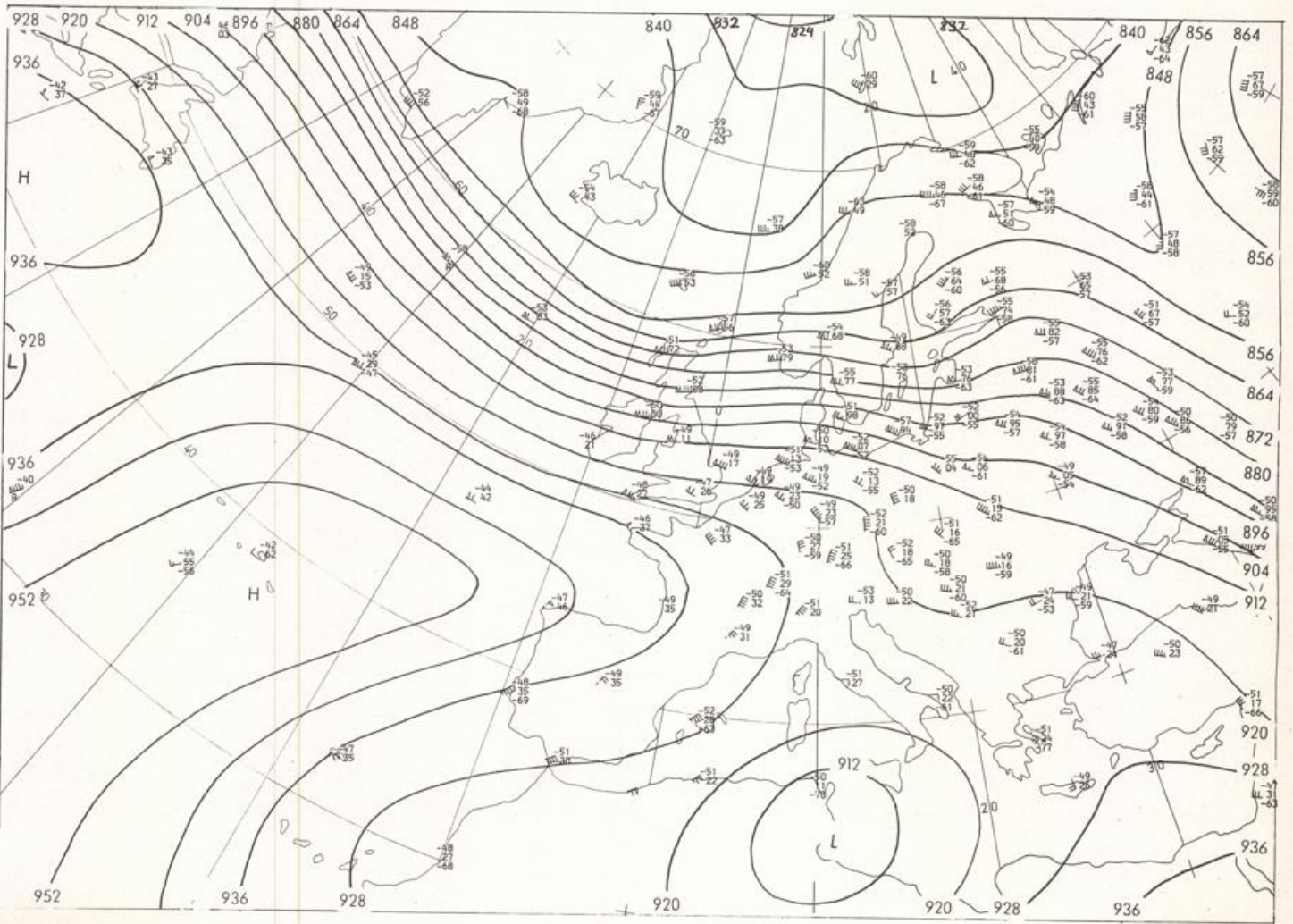
700 mbar 00 GMT

3.02.1981

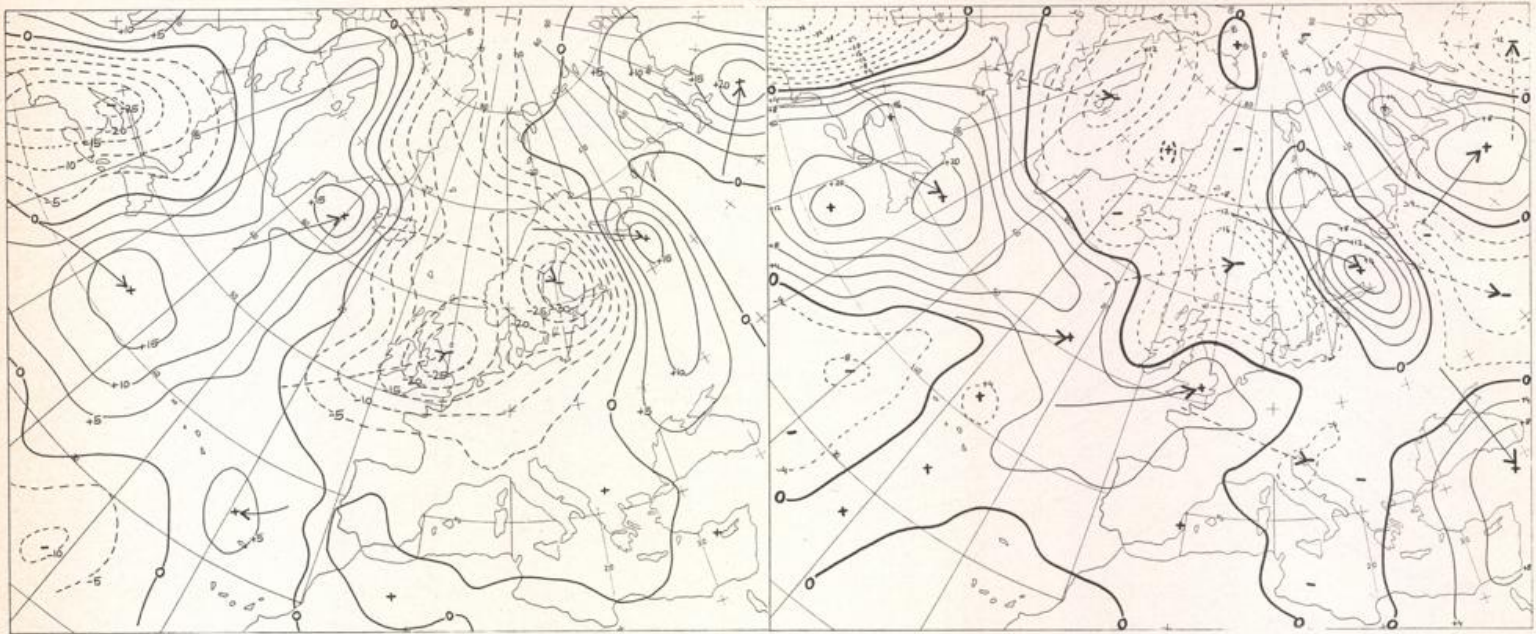


Stereogr. proj. 1:30 000 000 60°N

500/1000 mbar OO GMT



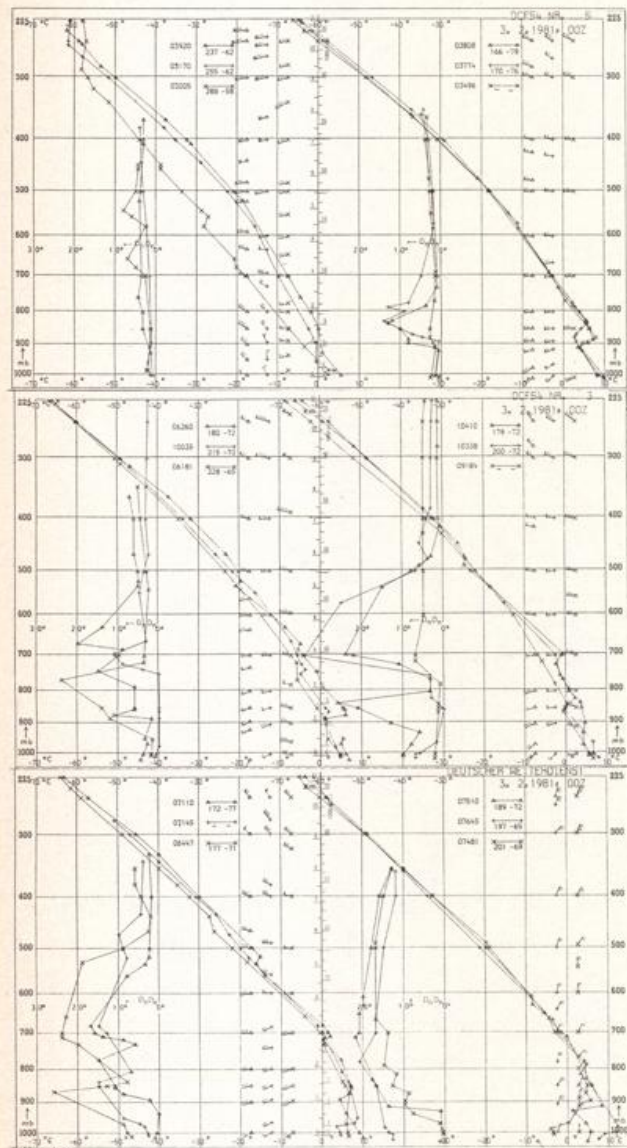
300 mbar OO GMT



24 hr surface pressure change OO GMT

Stereogr. proj. 1:60 000 000

24 hr thickness change OO GMT



Aerological Diagrams 00 GMT

- 01241 Orland
- 01384 Oslo
- 01415 Stavanger
- 02465 Stockholm
- 02527 Goteborg
- 03005 Lerwick
- 03170 Shanwell
- 03496 Hemsby
- 03774 Crawley
- 03808 Camborne
- 03920 Long Kesh
- 06181 Kobenhavn
- 06260 De Bilt
- 06447 Uccle
- 06610 Payerne
- 07110 Brest
- 07145 Trappes
- 07481 Lyon
- 07510 Bordeaux
- 07645 Nimes
- 09184 Greifswald
- 09393 Lindenberg
- 09548 Meiningen
- 10035 Schleswig
- 10338 Hannover
- 10410 Essen
- 10739 Stuttgart
- 10868 München-Oberschleißheim
- 11035 Wien
- 11320 Praha-Libus
- 12374 Legionowo
- 12843 Budapest
- 13275 Beograd
- 16084 Udine
- 16090 Milano
- 16242 Roma

