

# Europäischer Wetterbericht European Meteorological Bulletin Bulletin Météorologique Européen Boletín Meteorológico Europeo

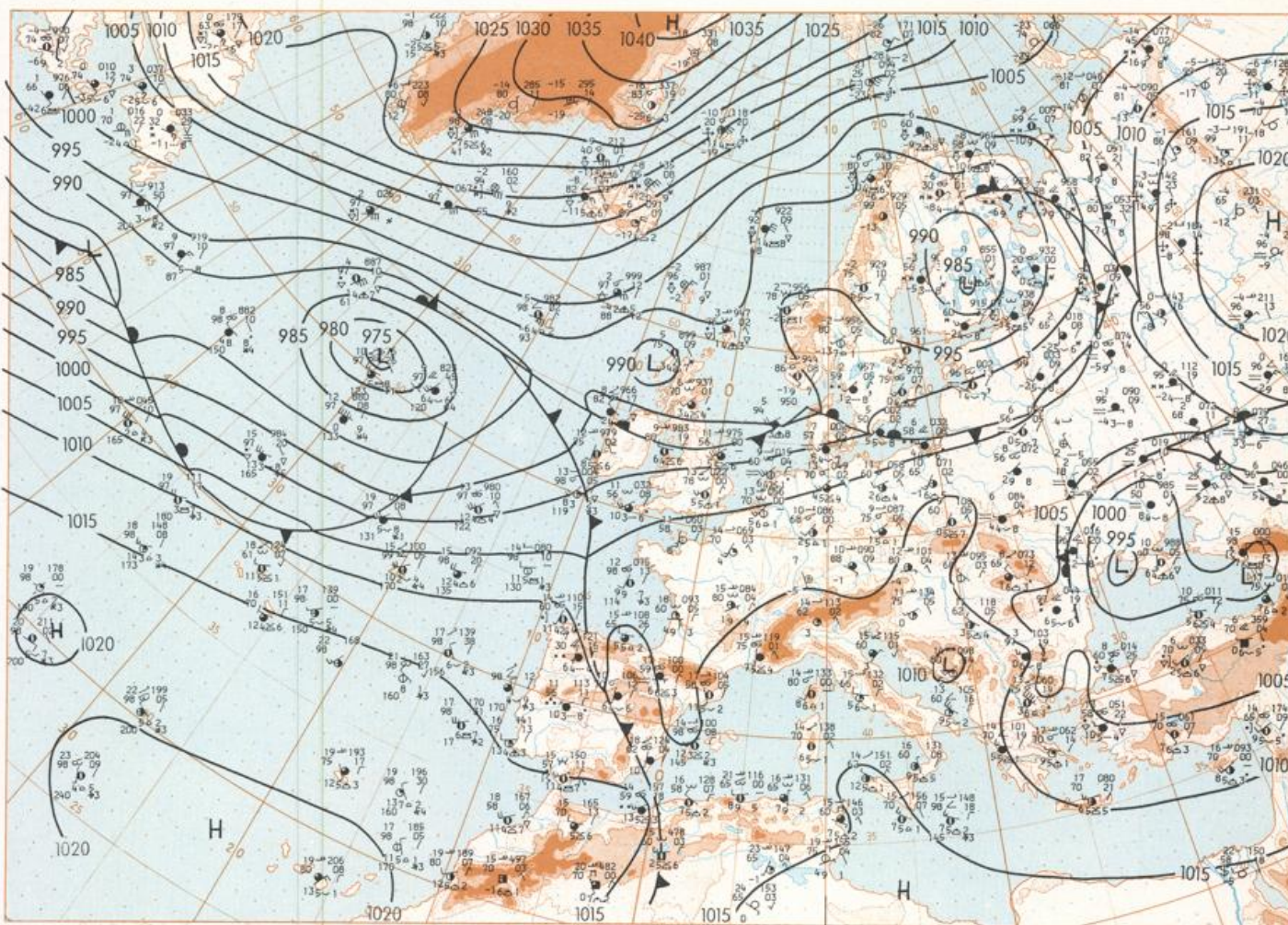
Amtsblatt des Deutschen Wetterdienstes

Druck und Verlag: Deutscher Wetterdienst — Zentralamt — D 6050 Offenbach am Main, Frankfurter Straße 135, Tel.: (0611) 80621

|   |   |  |  |
|---|---|--|--|
| Erscheint täglich<br>Bezugspreis monatlich 30.00 DM<br>zuzügl. Porto<br>Nachdruck nicht gestattet | Issued daily<br>Monthly price 30.00 DM<br>plus postage<br>All rights reserved | Publié quotidiennement<br>Prix mensuel 30.00 DM<br>plus port<br>Reproduction interdite | Se publica diariamente<br>Precio de suscripción mensual 30.00 DM<br>plus porte<br>Se prohíbe la reproducción |
|---|---|--|--|

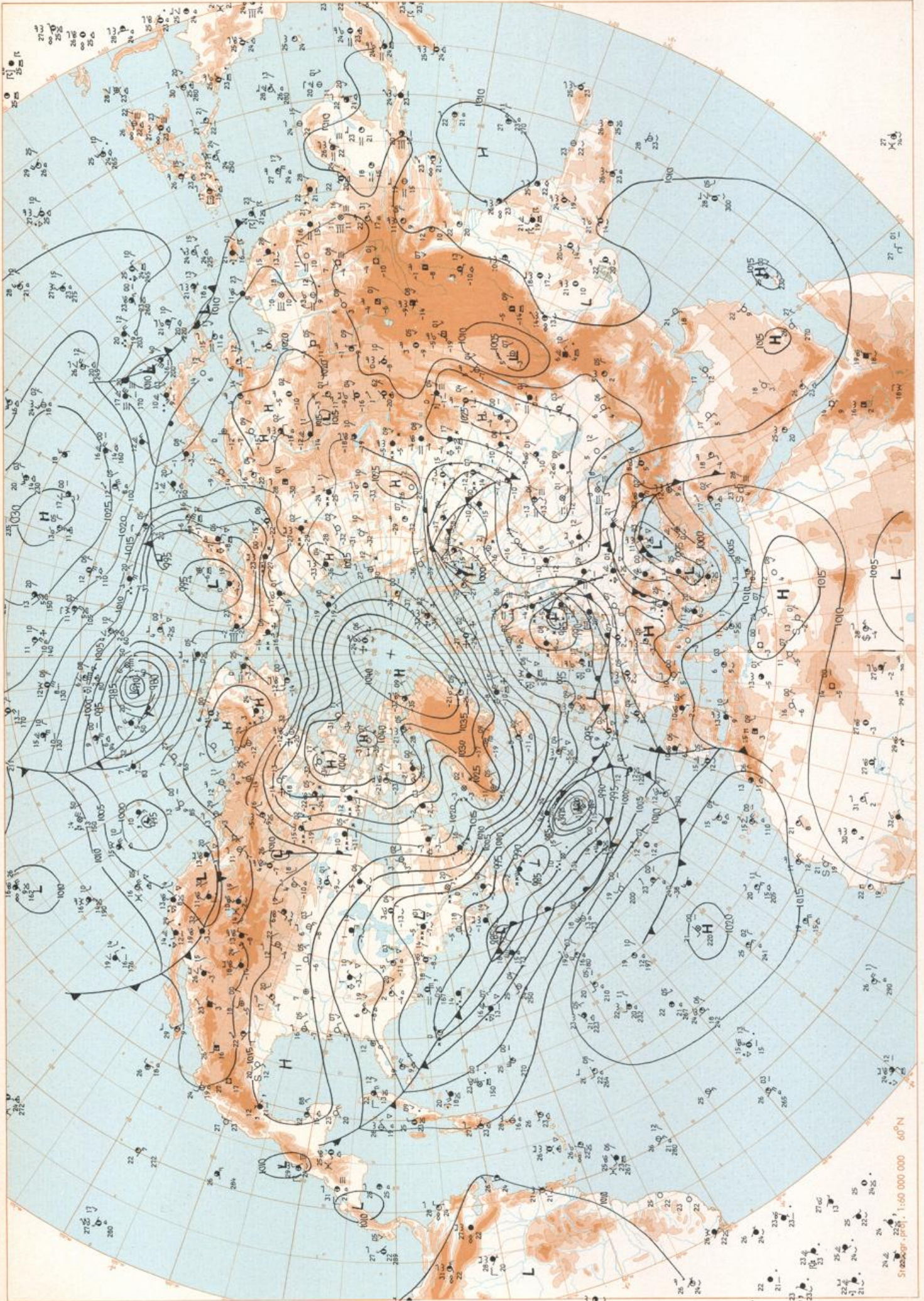
|   |   |  |            |                                      |    |
|---|---|--|------------|--------------------------------------|----|
| Jahrgang<br>Volume<br>Volume<br>Volumen | 6 | Freitag<br>Friday<br>Vendredi<br>Viernes | 20.03.1981 | Nummer<br>Number<br>Número<br>Número | 79 |
|---|---|--|------------|--------------------------------------|----|

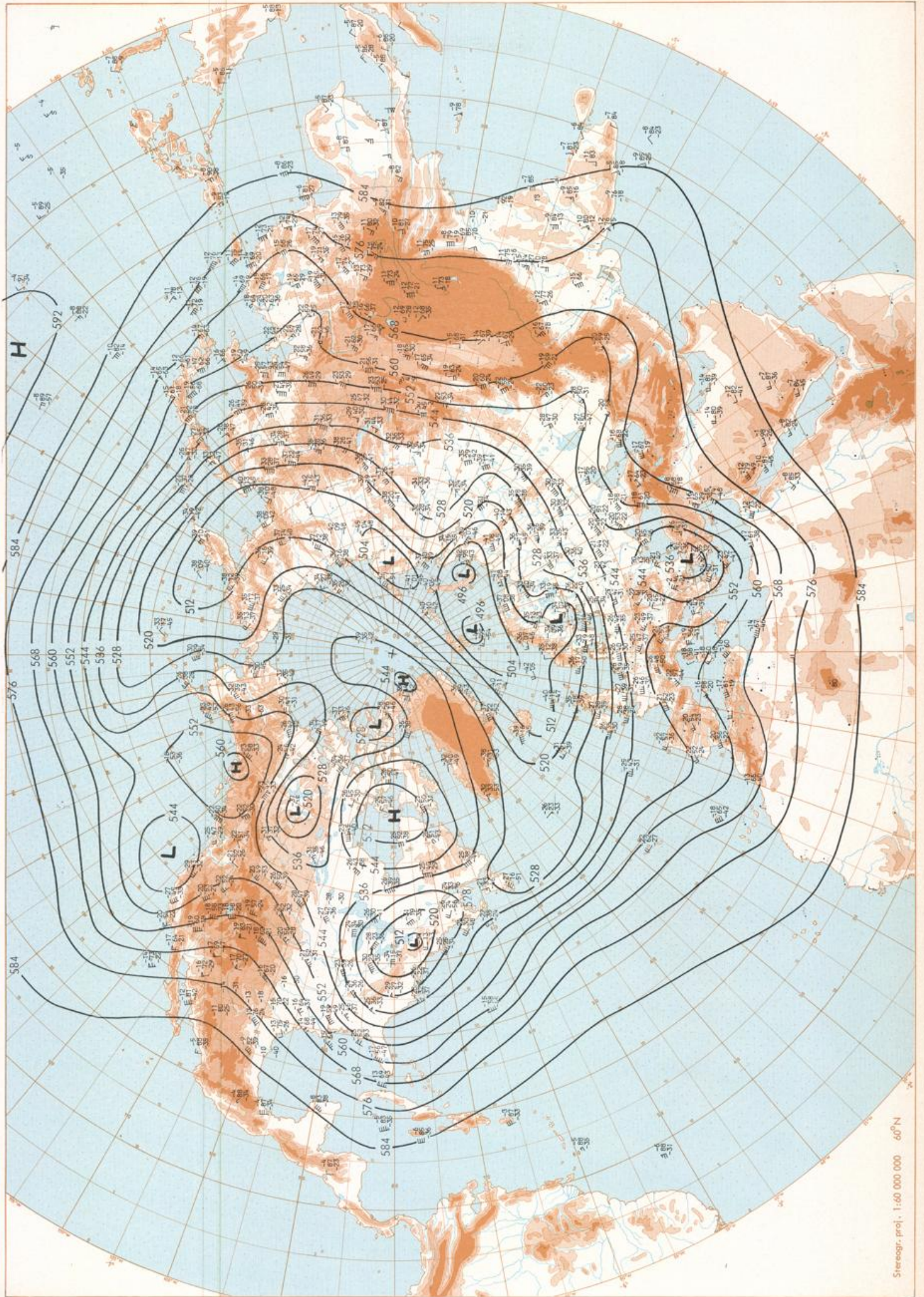
|   |  |  |   |
|---|--|--|---|
| Inhalt<br>Bodenwetterkarte 12 MGZ<br>Bodenwetterkarte Nordhemisphäre 00 MGZ<br>500-mbar-Fläche Nordhemisphäre 00 MGZ<br>200-mbar-Fläche Nordhemisphäre 00 MGZ<br>100-mbar-Fläche Nordhemisphäre 00 MGZ<br>850 mbar 00 MGZ, 700 mbar 00 MGZ<br>Relative Topographie 500/1000 mbar 00 MGZ<br>300 mbar 00 MGZ<br>24stäg. Bodendruckänderung 00 MGZ<br>24stäg. Änderung relative Topographie<br>500/1000 mbar 00 MGZ<br>Aerologische Diagramme 00 MGZ | Contenu<br>Surface chart 12 GMT<br>Surface chart northern hemisphere 00 GMT<br>500 mbar surface northern hemisphere 00 GMT<br>200 mbar surface northern hemisphere 00 GMT<br>100 mbar surface northern hemisphere 00 GMT<br>850 mbar 00 GMT, 700 mbar 00 GMT<br>Thickness chart 500/1000 mbar 00 GMT<br>300 mbar 00 GMT<br>24 hr surface pressure change 00 GMT<br>24 hr thickness change<br>500/1000 mbar 00 GMT<br>Aerological diagrams 00 GMT | Contenu<br>Carte de surface à 12 TU<br>Carte de surface sur l'hémisphère nord à 00 TU<br>Surface 500 mbar sur l'hémisphère nord à 00 TU<br>Surface 200 mbar sur l'hémisphère nord à 00 TU<br>Surface 100 mbar sur l'hémisphère nord à 00 TU<br>850 mbar 00 TU, 700 mbar 00 TU<br>Carte d'épaisseur 500/1000 mbar 00 TU<br>300 mbar 00 TU<br>Variations de pression en 24 h (niveau mer)<br>en mbar à 00 TU<br>Variations d'épaisseur 500/1000 mbar<br>en 24 h 00 TU<br>Diagrammes aérologiques 00 TU | Contenido<br>Análisis en superficie a las 12 T.M.G.<br>Análisis en superficie hemisferio norte a las 00 T.M.G.<br>Topografía de la superficie de 500 mbar hemisferio norte a las 00 T.M.G.<br>Topografía de la superficie de 200 mbar hemisferio norte a las 00 T.M.G.<br>Topografía de la superficie de 100 mbar hemisferio norte a las 00 T.M.G.<br>850 mbar 00 T.M.G., 700 mbar 00 T.M.G.<br>Relativo 500/1000 mbar 00 T.M.G.<br>300 mbar 00 T.M.G.<br>Variación de la presión del suelo 24 h en mbar a las 00 T.M.G.<br>Variación de espesor 500/1000 mbar en 24 h 00 T.M.G.<br>Diagramas aerológicos 00 T.M.G. |
|---|--|--|---|



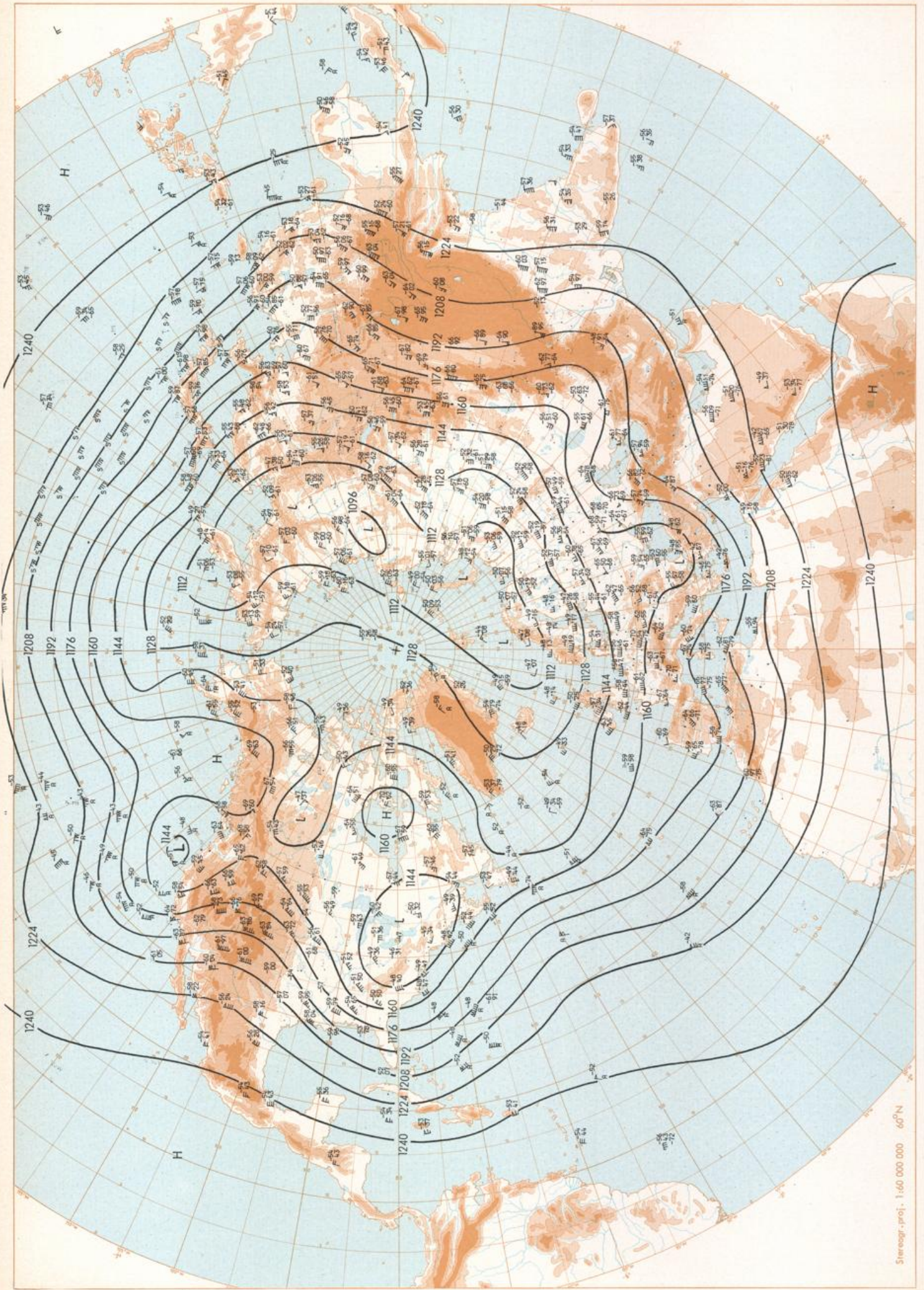
Stereogr. proj. 1:30 000 000 60°N

Surface chart 12 GMT



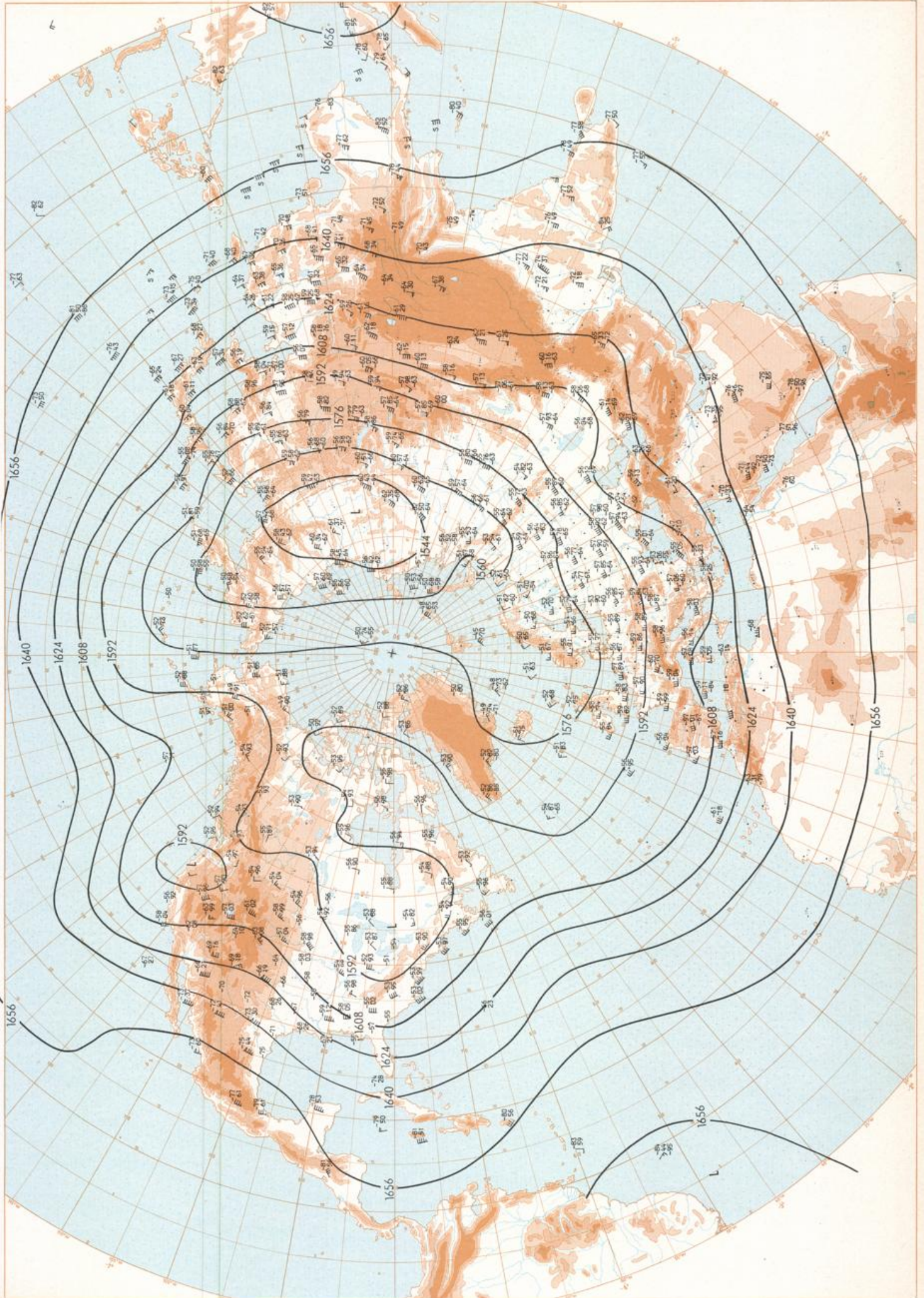


500 mbar OO GMT

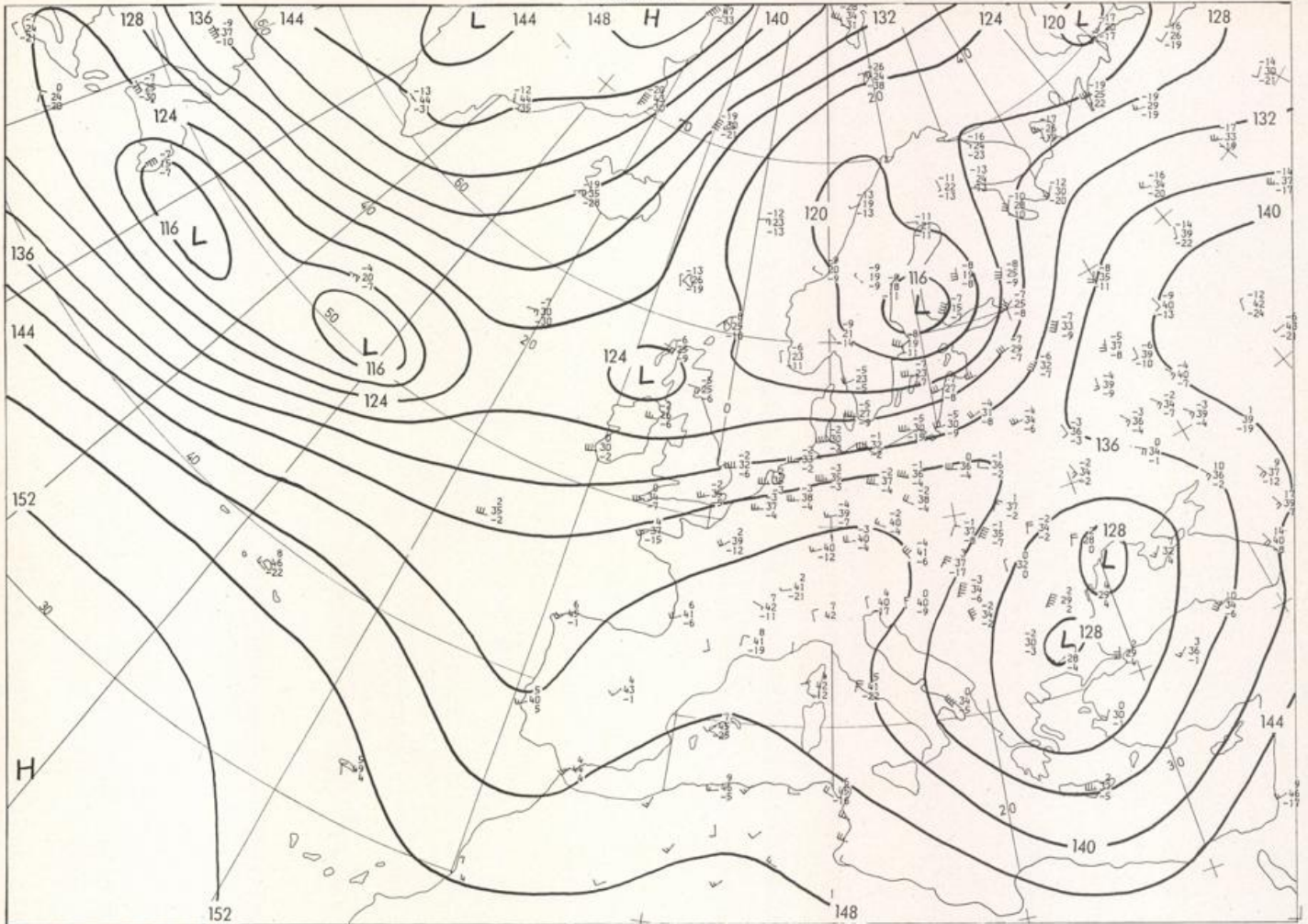


200 mbar ○ GMT

Stereogr. proj. 1:60 000 000 60°N

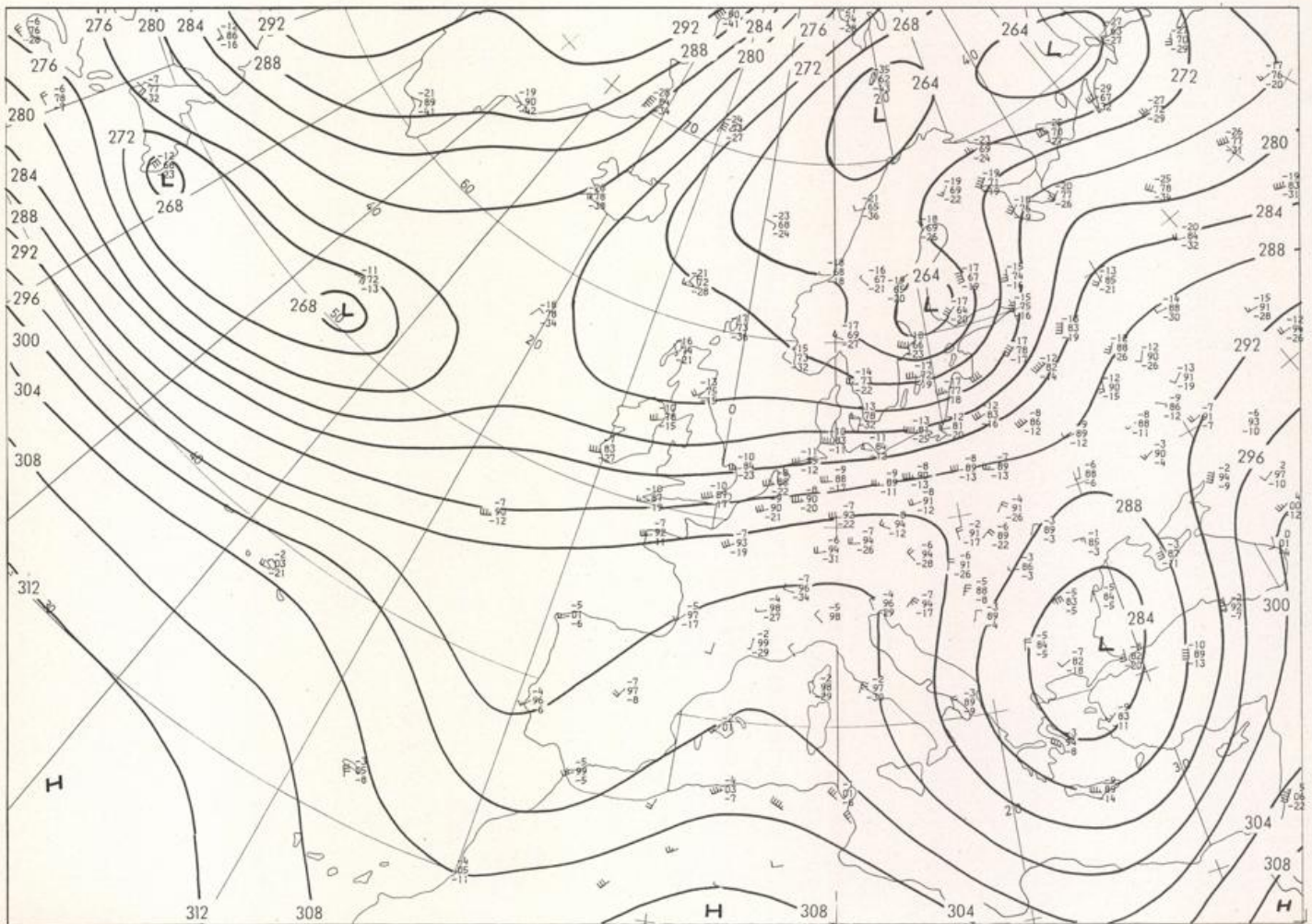


20.03.1981



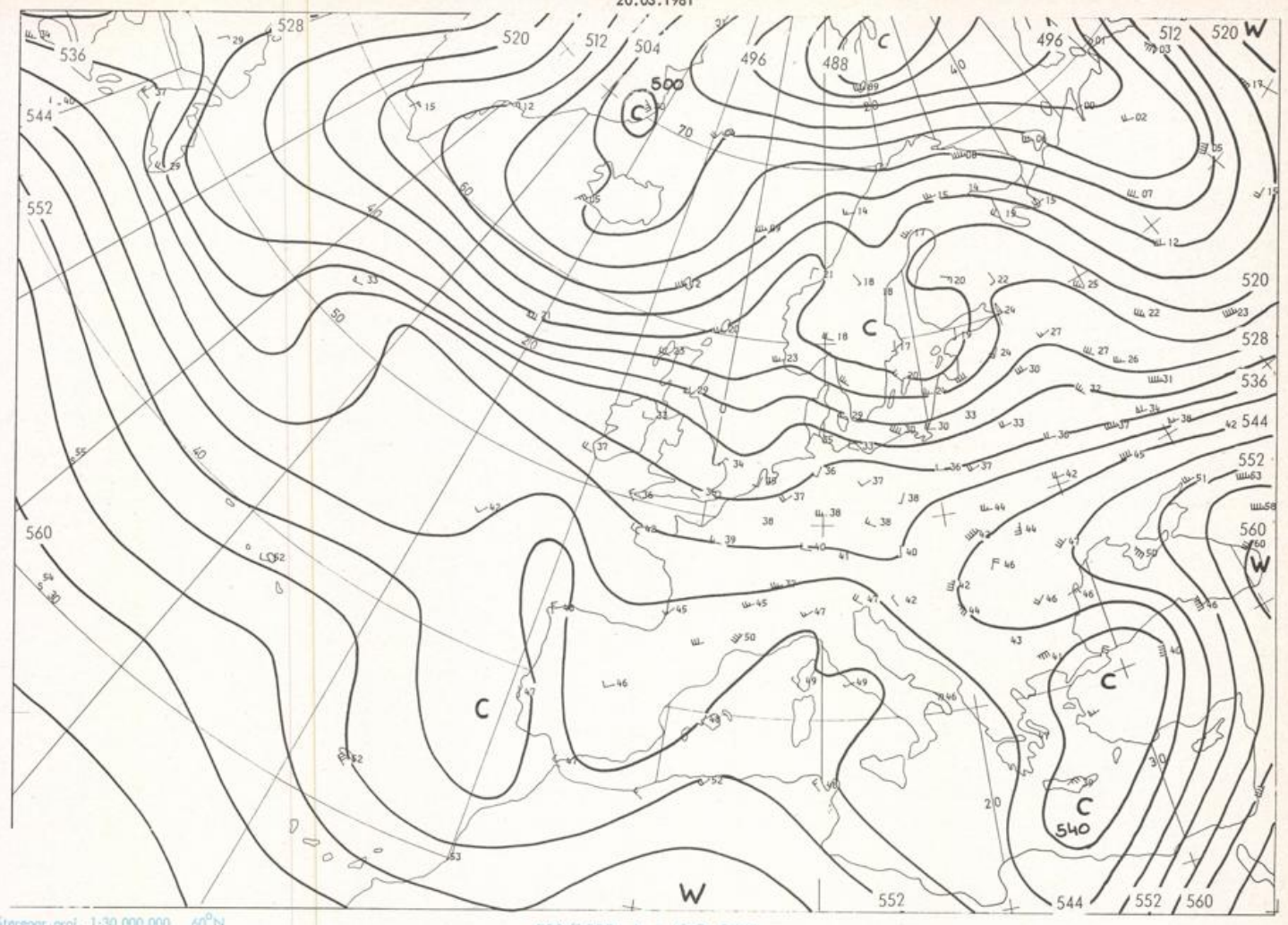
Stereogr. proj. 1:30 000 000 in 60°N

850 mbar OO GMT



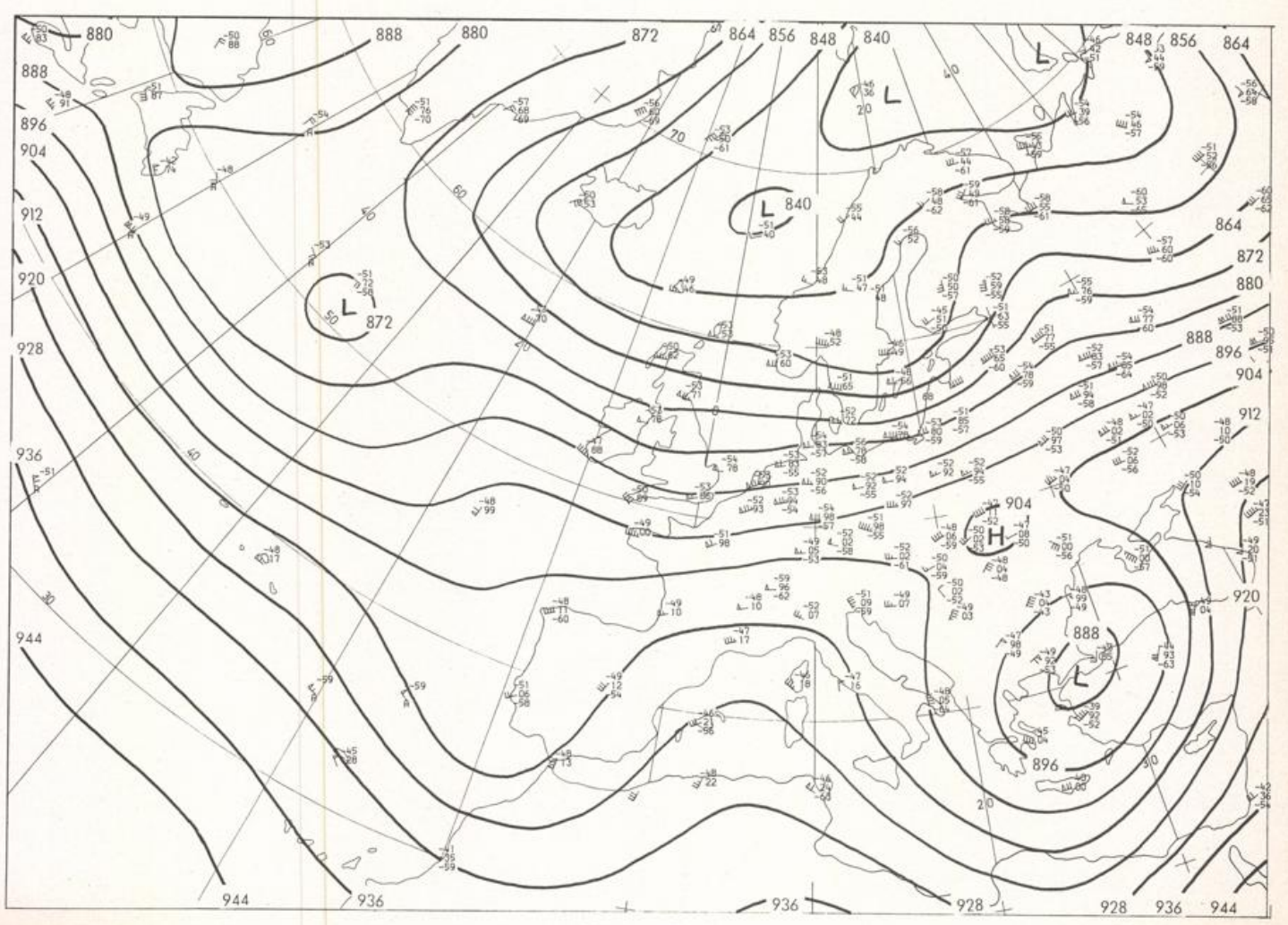
700 mbar OO GMT

20.03.1981

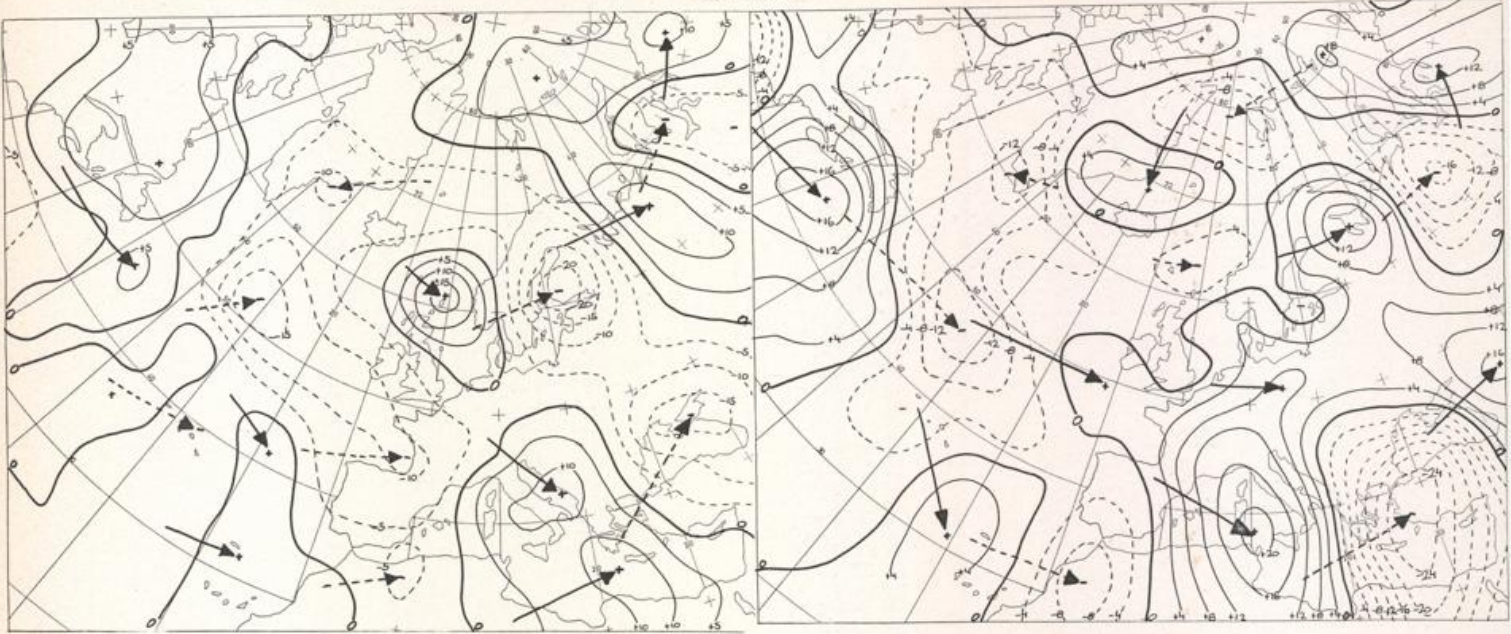


Stereogr. proj. 1:30 000 000 60°N

500/1000 mbar OO GMT



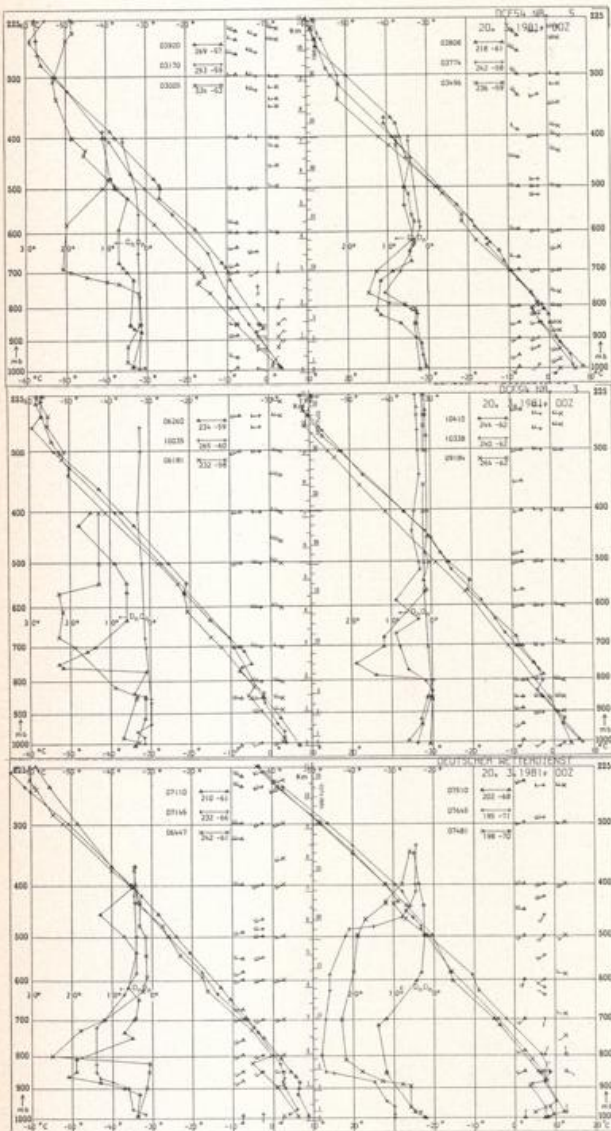
300 mbar OO GMT



Stereogr. proj. 1:160 000 000

24 hr surface pressure change 00 GMT

24 hr thickness change 00 GMT



Aerological Diagrams 00 GMT

- 01241 Orland
- 01384 Oslo
- 01415 Stavanger
- 02465 Stockholm
- 02527 Goteborg
- 03005 Lerwick
- 03170 Shanwell
- 03496 Hemsby
- 03774 Crawley
- 03808 Camborne
- 03920 Long Kesh
- 06181 Kobenhavn
- 06260 De Bilt
- 06447 Uccle
- 06610 Payeme
- 07110 Brest
- 07145 Trappes
- 07481 Lyon
- 07510 Bordeaux
- 07645 Nimes
- 09184 Greifswald
- 09393 Lindenberg
- 09548 Meiningen
- 10035 Schleswig
- 10338 Hannover
- 10410 Essen
- 10739 Stuttgart
- 10868 München-Oberschleißheim
- 11035 Wien
- 11520 Praha-Libus
- 12374 Legionowo
- 12843 Budapest
- 13275 Beograd
- 16044 Udine
- 16080 Milano
- 16242 Roma

