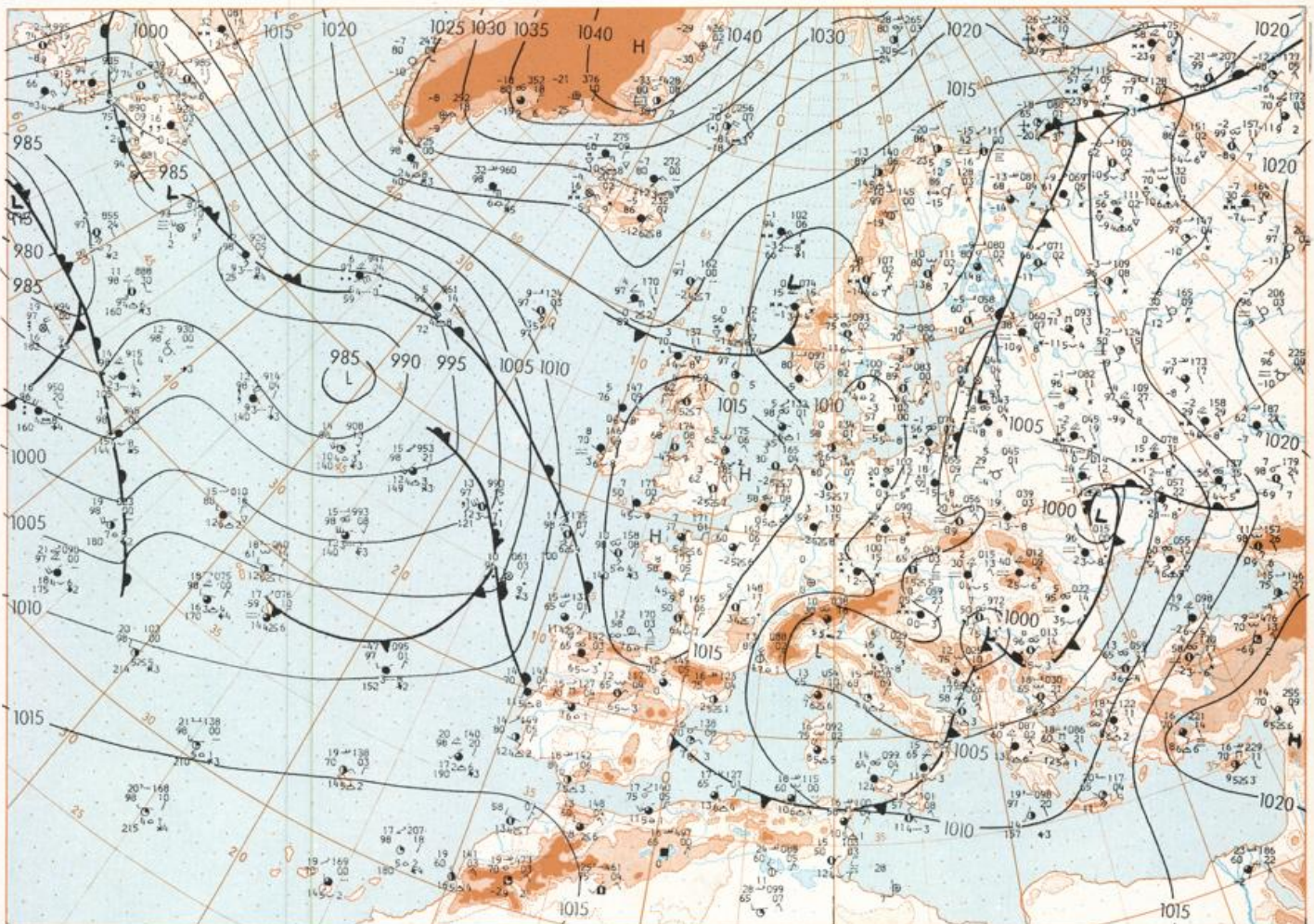


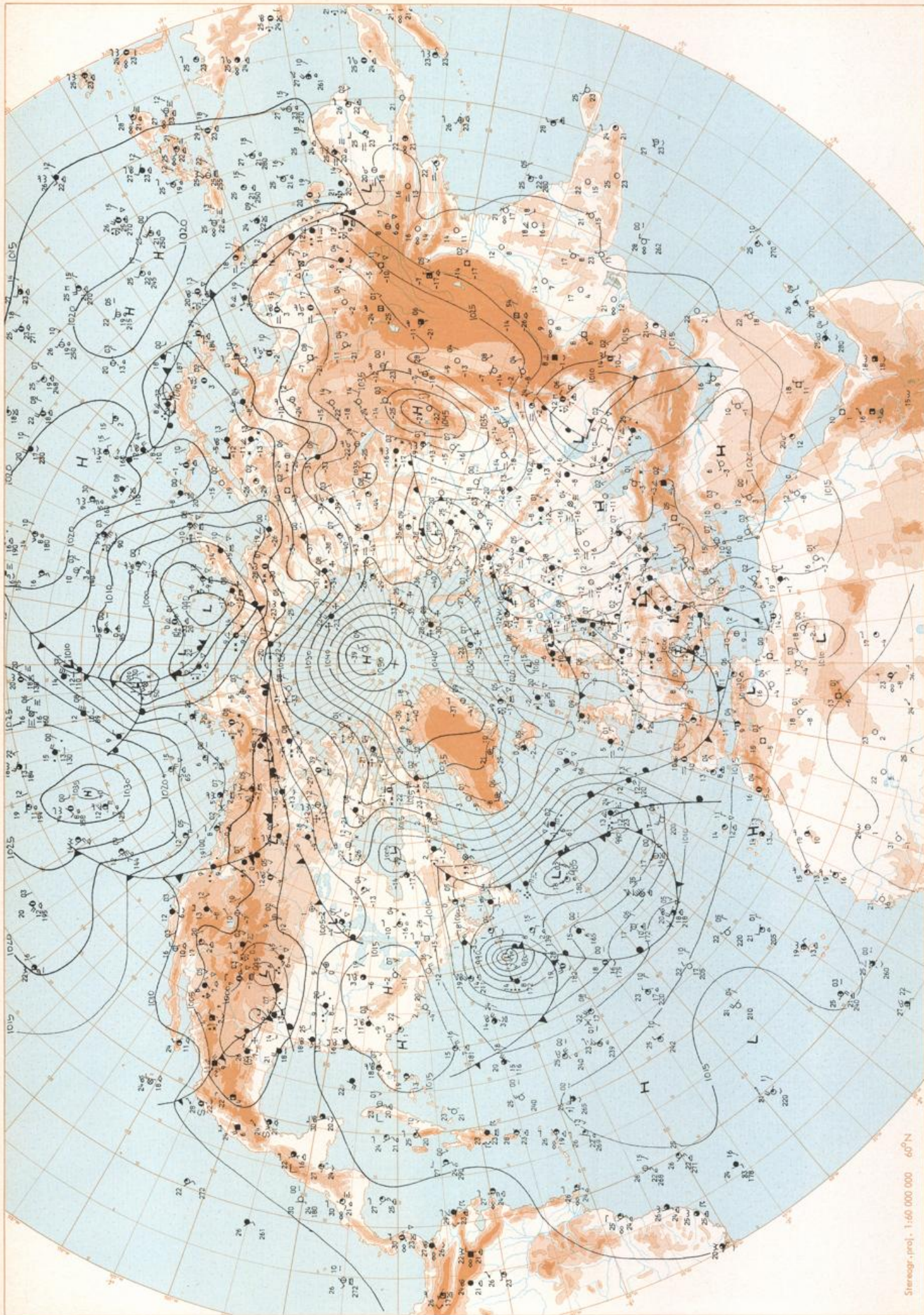
# Europäischer Wetterbericht European Meteorological Bulletin Bulletin Météorologique Européen Boletín Meteorológico Europeo

Amtsblatt des Deutschen Wetterdienstes

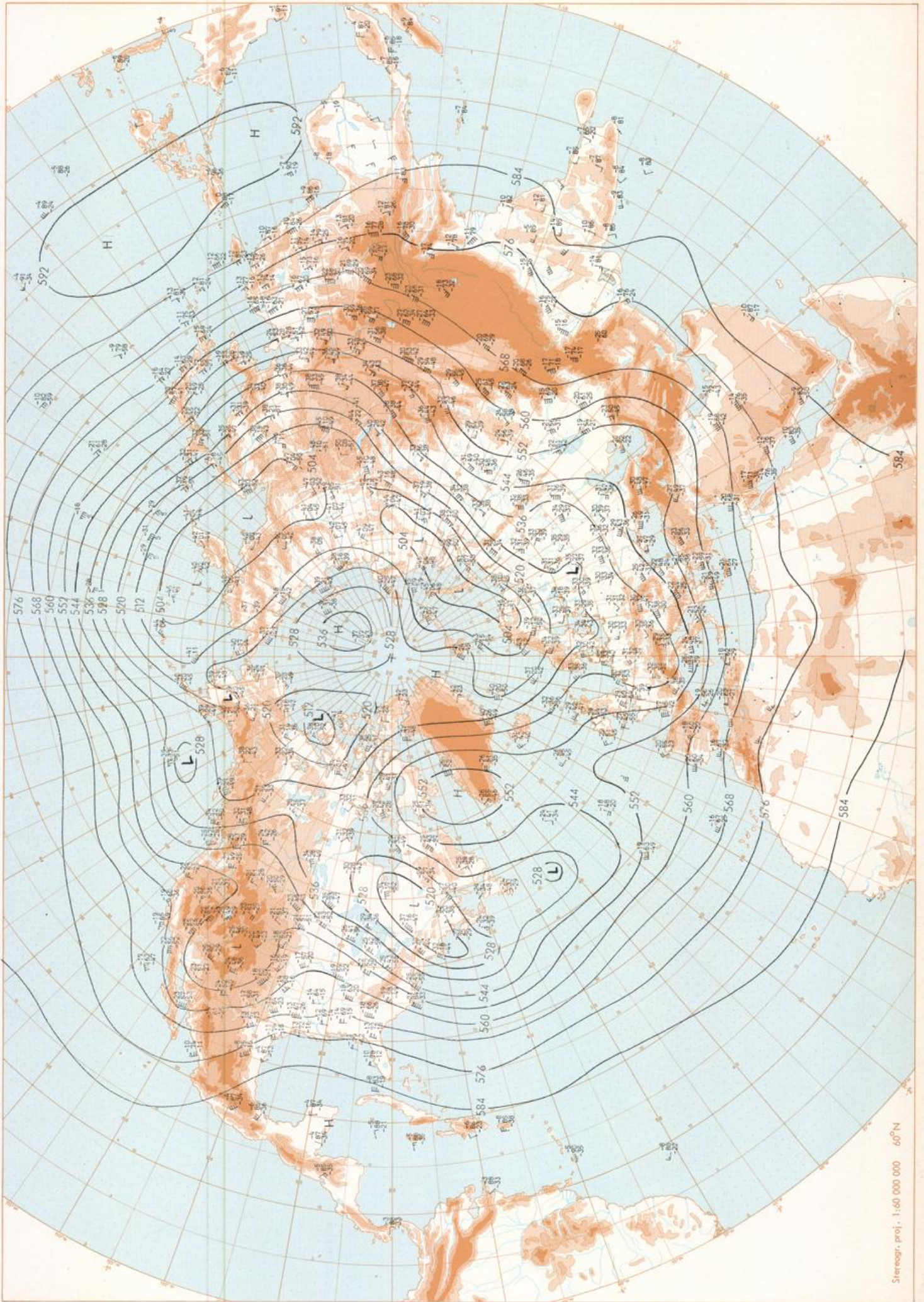
Druck und Verlag: Deutscher Wetterdienst — Zentralamt — D 6050 Offenbach am Main, Frankfurter Straße 135, Tel.: (0611) 80621

|  |  |   |  |
|--|--|---|--|
| <p>Erscheint täglich<br/>Bezugspreis monatlich 30,00 DM<br/>zuzügl. Porto<br/>Nachdruck nicht gestattet</p>  | <p>Issued daily<br/>Monthly price 30,00 DM<br/>plus postage<br/>All rights reserved</p>  | <p>Publié quotidiennement<br/>Prix mensuel 30,00 DM<br/>plus port<br/>Reproduction interdite</p>  | <p>Se publica diariamente<br/>Precio de suscripción mensual 30,00 DM<br/>plus porte<br/>Se prohíbe la reproducción</p>   |
| <p>Jahrgang<br/>Volume<br/>Volume<br/>Volumen</p> <p>6</p>   | <p>Mittwoch<br/>Wednesday<br/>Mercredi<br/>Miércoles</p> <p>4.03.1981</p>  | <p>Nummer<br/>Number<br/>Número</p> <p>63</p>   |  |
| <p>Inhalt<br/>Badenwetterkarte 12 MGZ<br/>Badenwetterkarte Nordhemisphäre 00 MGZ<br/>500-mbar-Fläche Nordhemisphäre 00 MGZ<br/><br/>200-mbar-Fläche Nordhemisphäre 00 MGZ<br/>100-mbar-Fläche Nordhemisphäre 00 MGZ<br/><br/>850 mbar 00 MGZ, 700 mbar 00 MGZ<br/>Relative Topographie 500/1000 mbar 00 MGZ<br/>300 mbar 00 MGZ<br/>24stäg. Badendruckänderung 00 MGZ<br/>24tag. Änderung relative Topographie<br/>500/1000 mbar 00 MGZ<br/><br/>Aerologische Diagramme 00 MGZ</p> | <p>Contant<br/>Surface chart 12 GMT<br/>Surface chart northern hemisphere 00 GMT<br/>500 mbar surface northern hemisphere 00 GMT<br/><br/>200 mbar surface northern hemisphere 00 GMT<br/>100 mbar surface northern hemisphere 00 GMT<br/><br/>850 mbar 00 GMT, 700 mbar 00 GMT<br/>Thickness chart 500/1000 mbar 00 GMT<br/>300 mbar 00 GMT<br/>24 hr surface pressure change 00 GMT<br/>24 hr thickness change<br/>500/1000 mbar 00 GMT<br/><br/>Aerological diagrams 00 GMT</p> | <p>Contenu<br/>Carte de surface à 12 TU<br/>Carte de surface sur l'hémisphère nord à 00 TU<br/>Surface 500 mbar sur l'hémisphère nord à 00 TU<br/><br/>Surface 200 mbar sur l'hémisphère nord à 00 TU<br/>Surface 100 mbar sur l'hémisphère nord à 00 TU<br/><br/>850 mbar 00 TU, 700 mbar 00 TU<br/>Carte d'épaisseur 500/1000 mbar 00 TU<br/>300 mbar 00 TU<br/>Variations de pression en 24 h (niveau mer)<br/>en mbar à 00 TU<br/>Variations d'épaisseur 500/1000 mbar<br/>en 24 h 00 TU<br/><br/>Diagrammes aérologiques 00 TU</p> | <p>Contenido<br/>Análisis en superficie a las 12 T.M.G.<br/>Análisis en superficie hemisferio norte a las 00 T.M.G.<br/>Topografía de la superficie de 500 mbar hemisferio<br/>norte a las 00 T.M.G.<br/><br/>Topografía de la superficie de 200 mbar hemisferio<br/>norte a las 00 T.M.G.<br/>Topografía de la superficie de 100 mbar hemisferio<br/>norte a las 00 T.M.G.<br/><br/>850 mbar 00 T.M.G., 700 mbar 00 T.M.G.<br/>Relativo 500/1000 mbar 00 T.M.G.<br/>300 mbar 00 T.M.G.<br/>Variación de la presión del suelo 24 h en mbar<br/>a las 00 T.M.G.<br/>Variación de espesor 500/1000 mbar<br/>en 24 h 00 T.M.G.<br/><br/>Diagramas aerológicos 00 T.M.G.</p> |



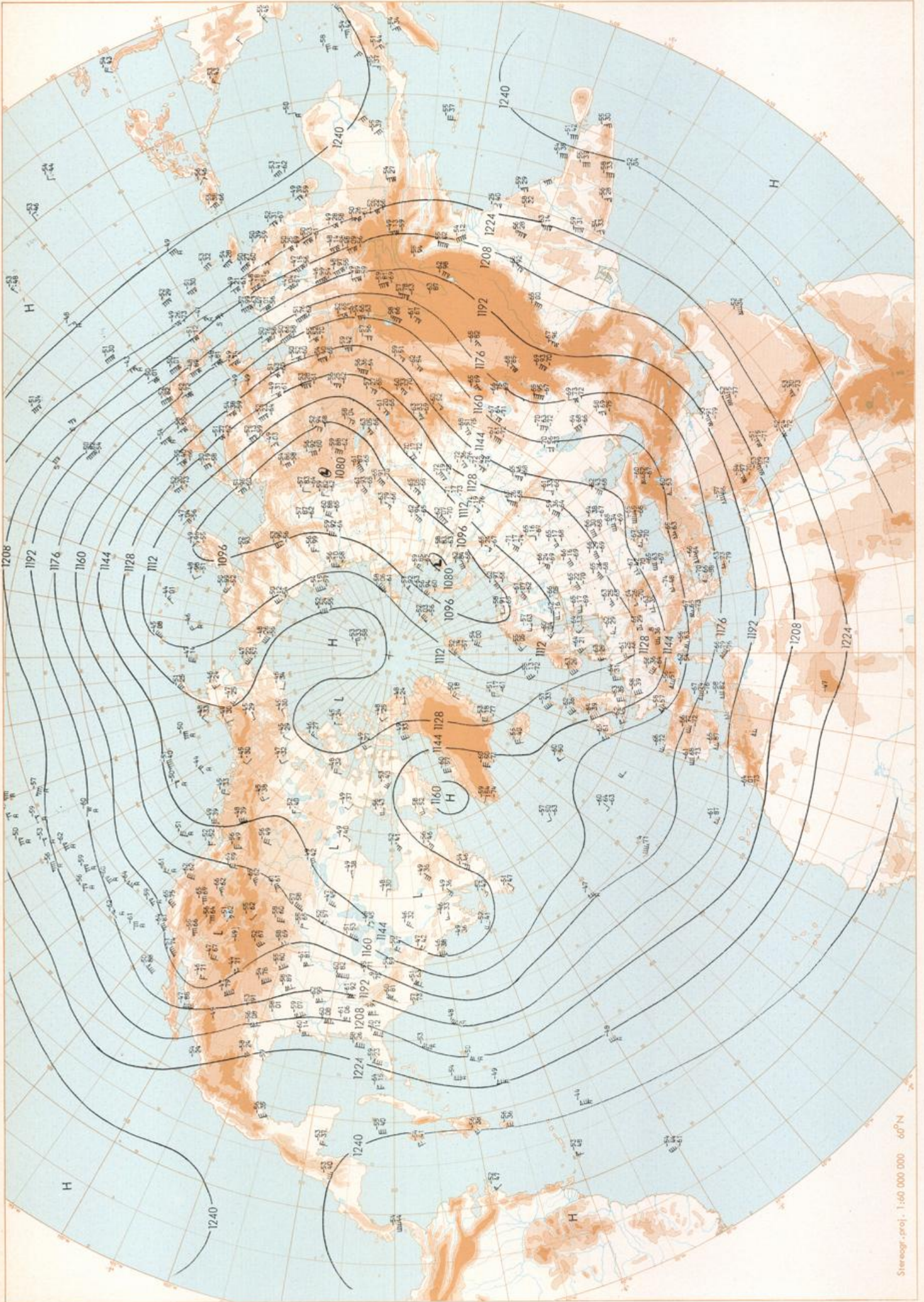


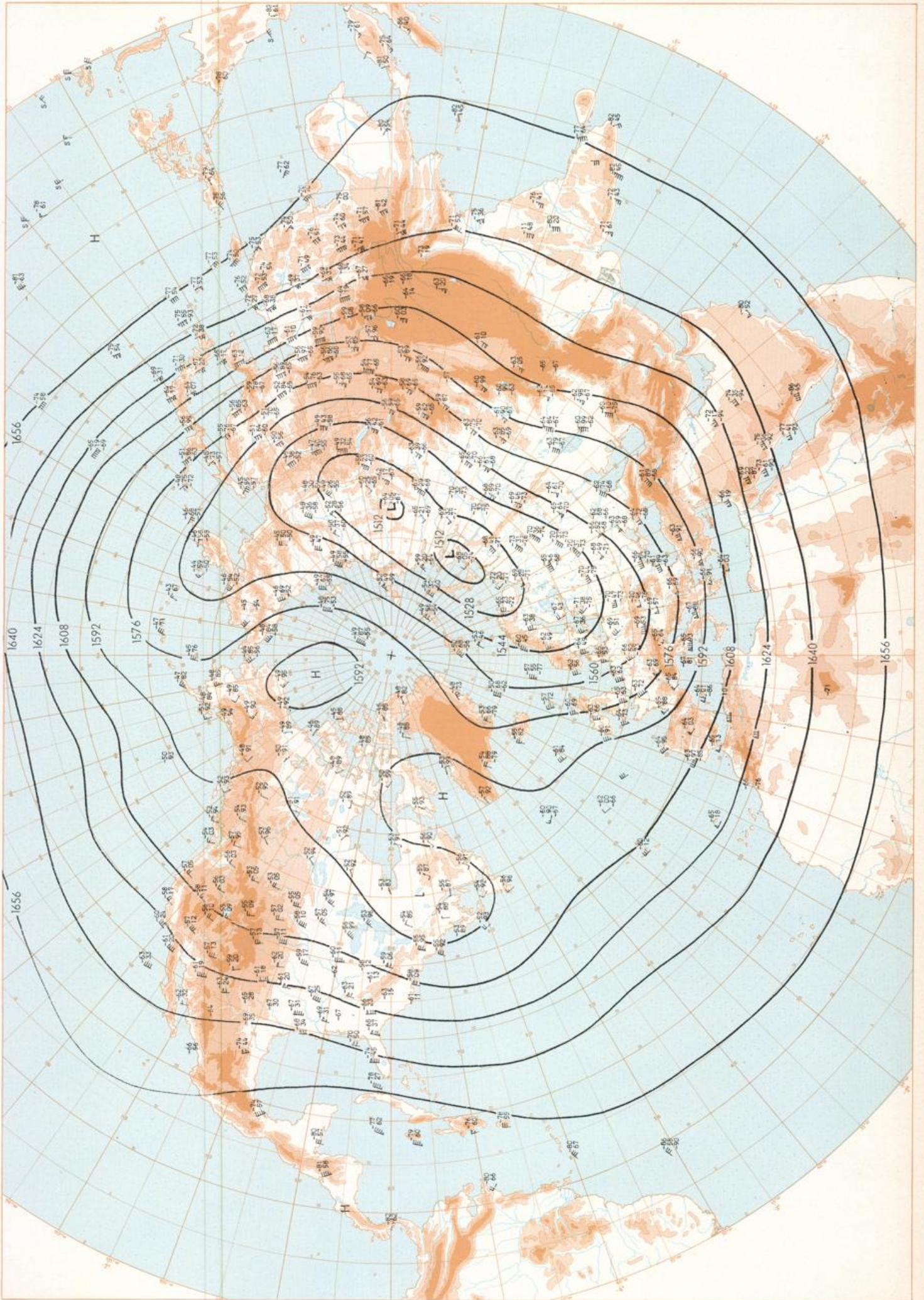
Surface chart OO GMT



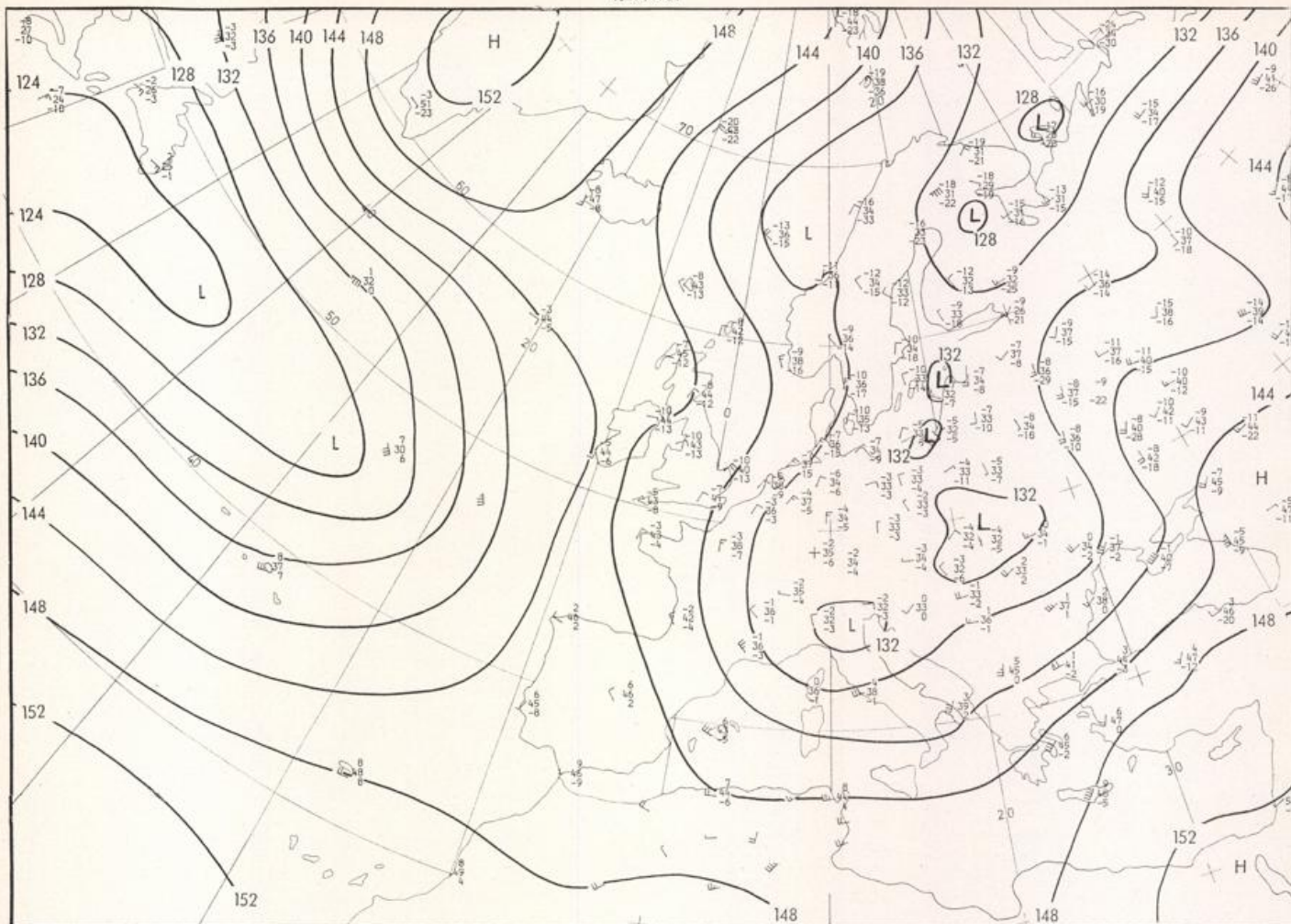
500 mbar OO GMT

Stereogr. proj. 1:60 000 000 60°N



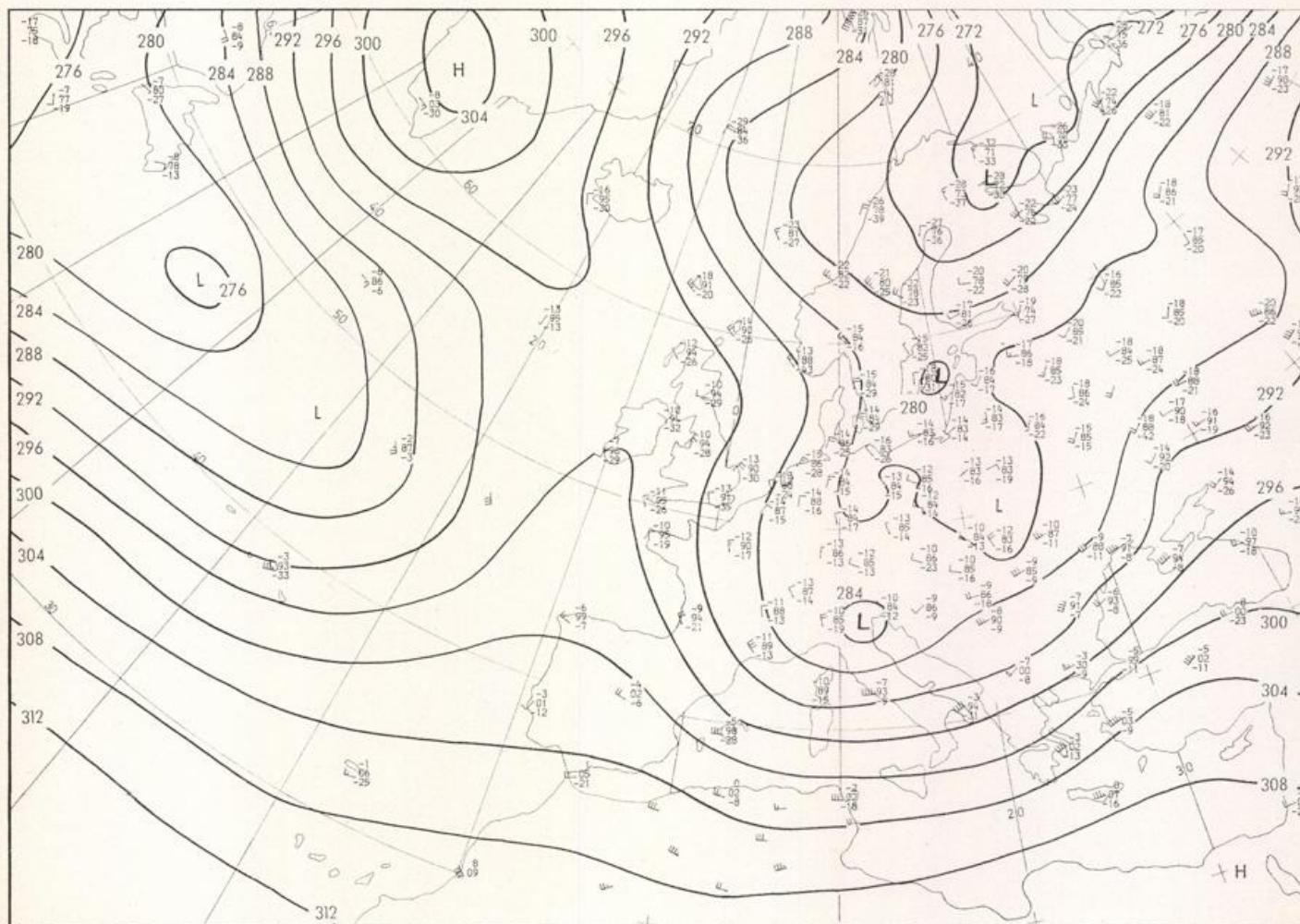


100 mbar OO GMT

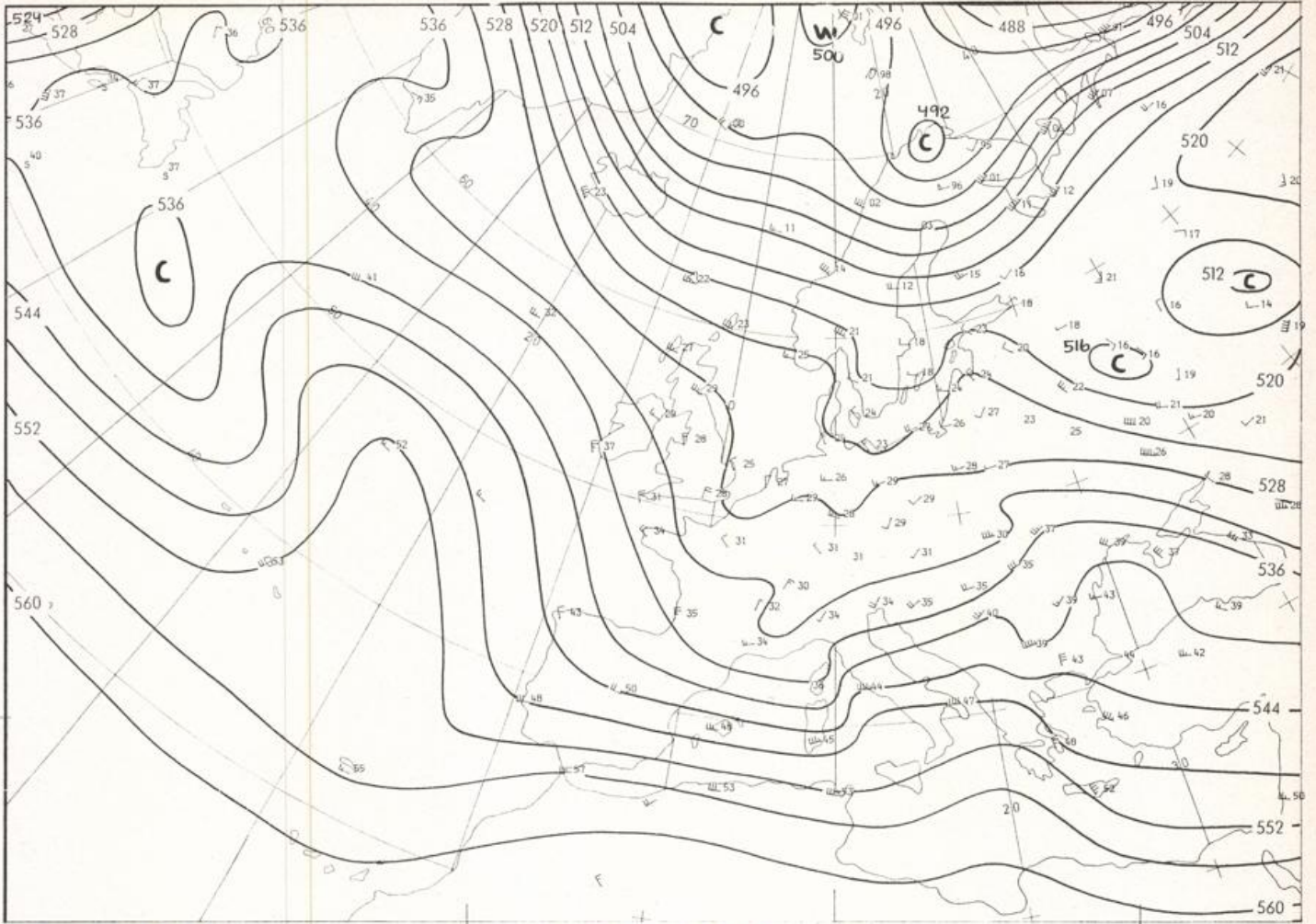


Stereogr. proj. 1:30 000 000 in 60°N

850 mbar OO GMT

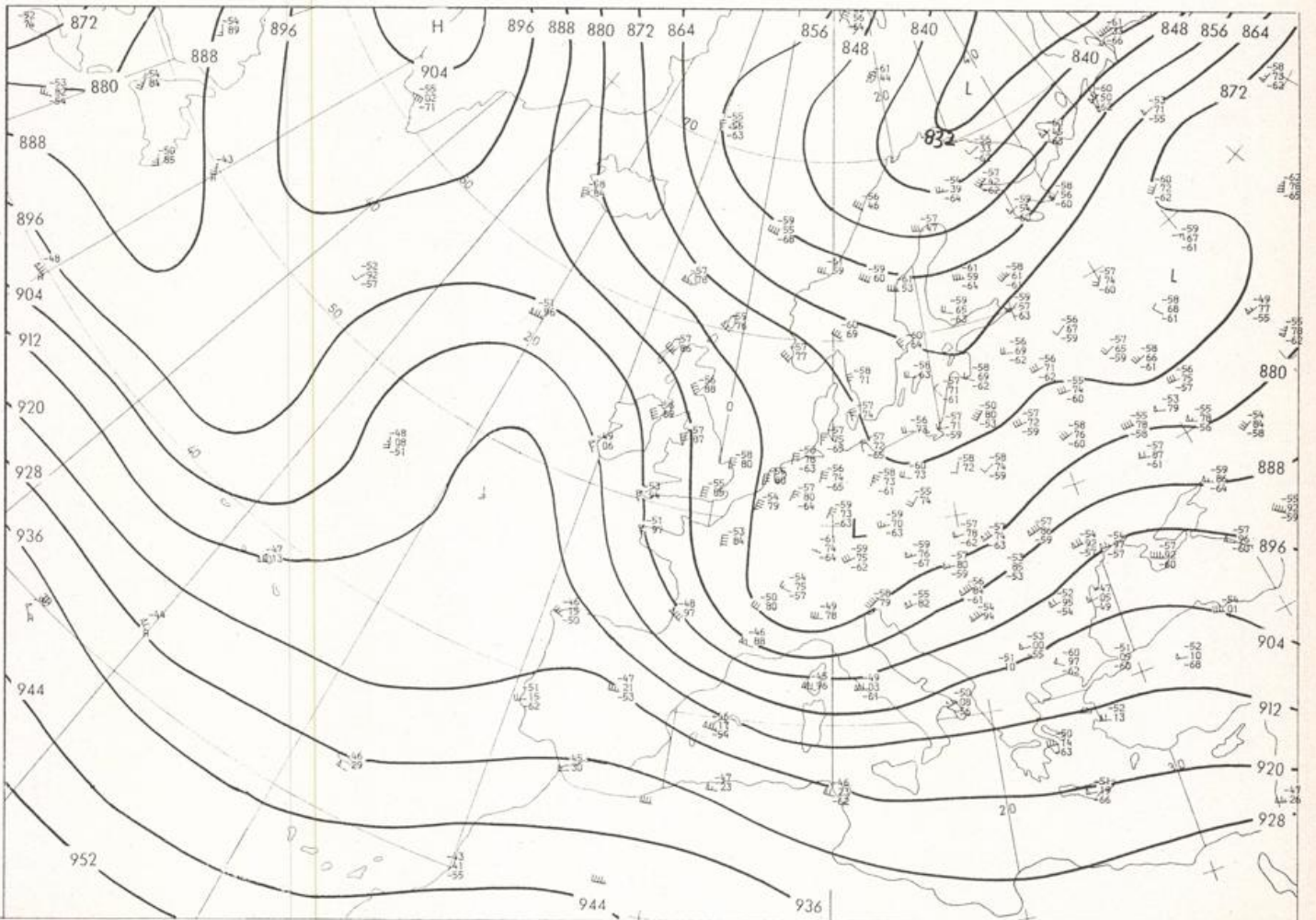


700 mbar OO GMT

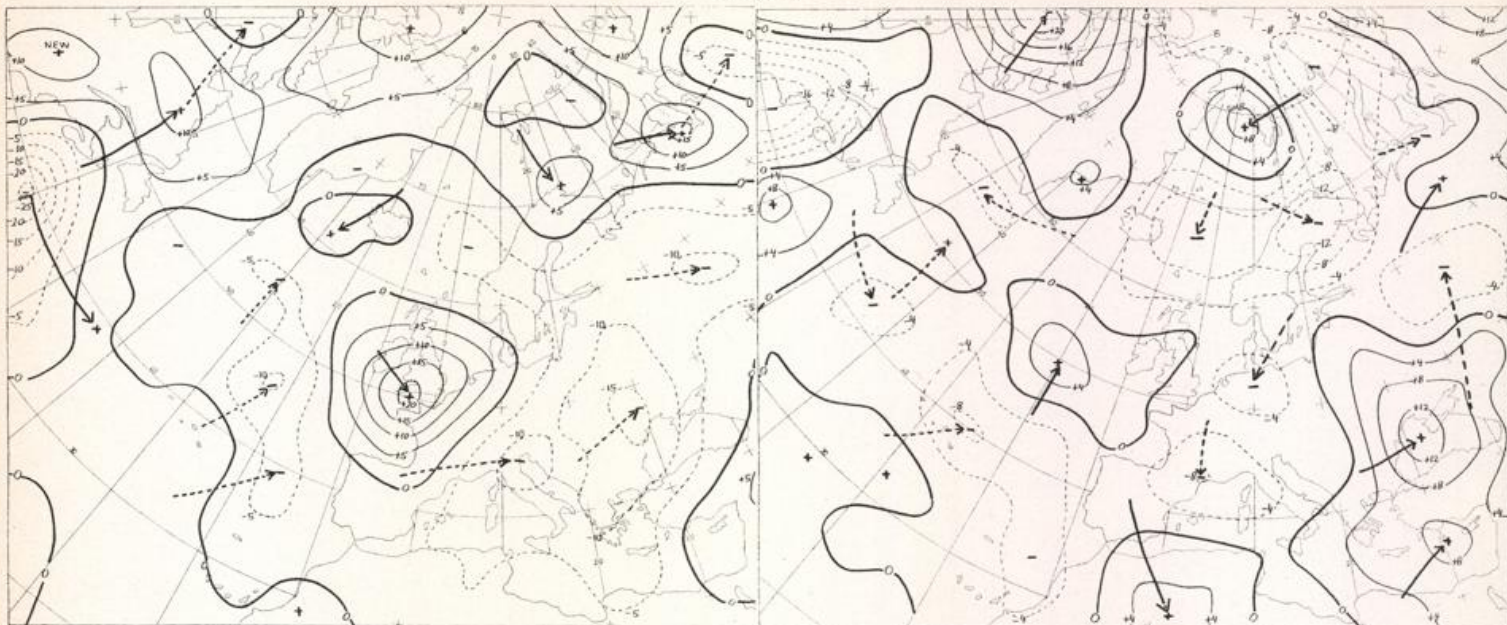


Stereogr. proj. 1:30 000 000 60°N

500/1000 mbar 00 GMT



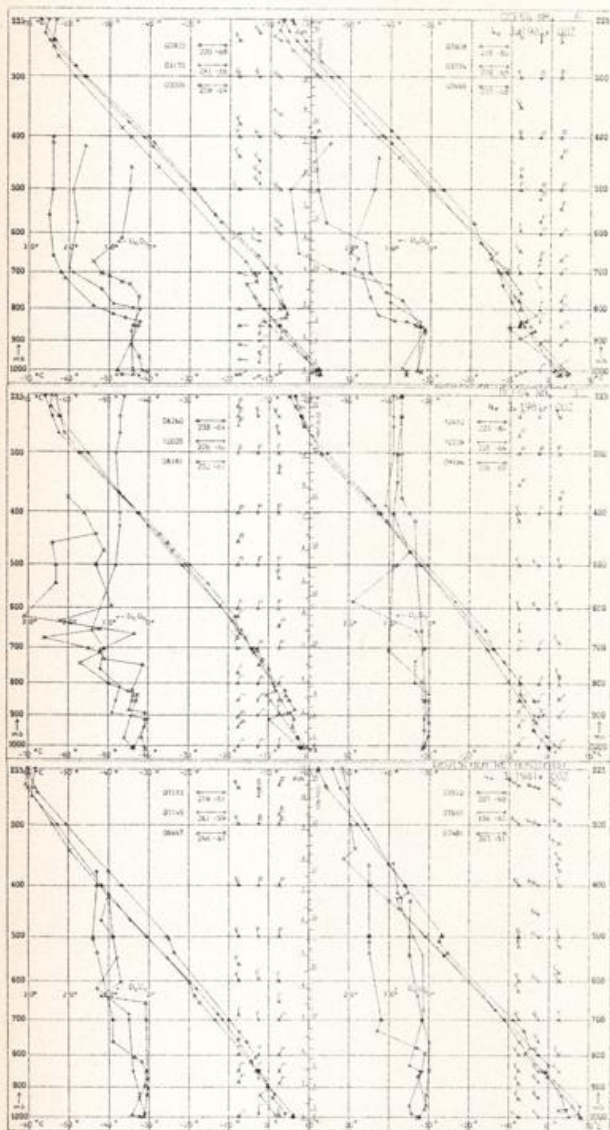
300 mbar 00 GMT



24 hr surface pressure change OO GMT

Stereogr. proj. 1:60 000 000

24 hr thickness change OO GMT



Aerological Diagrams OO GMT

- 01241 Orland
- 01384 Oslo
- 01415 Stavanger
- 02465 Stockholm
- 02527 Goteborg
- 03005 Lerwick
- 03170 Shanwell
- 03496 Hamsby
- 03774 Crawley
- 03808 Camborne
- 03920 Long Kesh
- 06181 Kobenhavn
- 06260 De Bilt
- 06447 Uccle
- 06610 Payeme
- 07110 Brest
- 07145 Trappes
- 07481 Lyon
- 07510 Bordeaux
- 07645 Nimes
- 09184 Greifswald
- 09393 Lindenberg
- 09548 Meiningen
- 10035 Schleswig
- 10338 Hannover
- 10410 Essen
- 10739 Stuttgart
- 10868 MUnchen-OberschleiBheim
- 11035 Wien
- 11520 Praha-Libus
- 12374 Legionowo
- 12843 Budapest
- 13275 Beograd
- 16044 Udine
- 16080 Milano
- 16242 Roma

