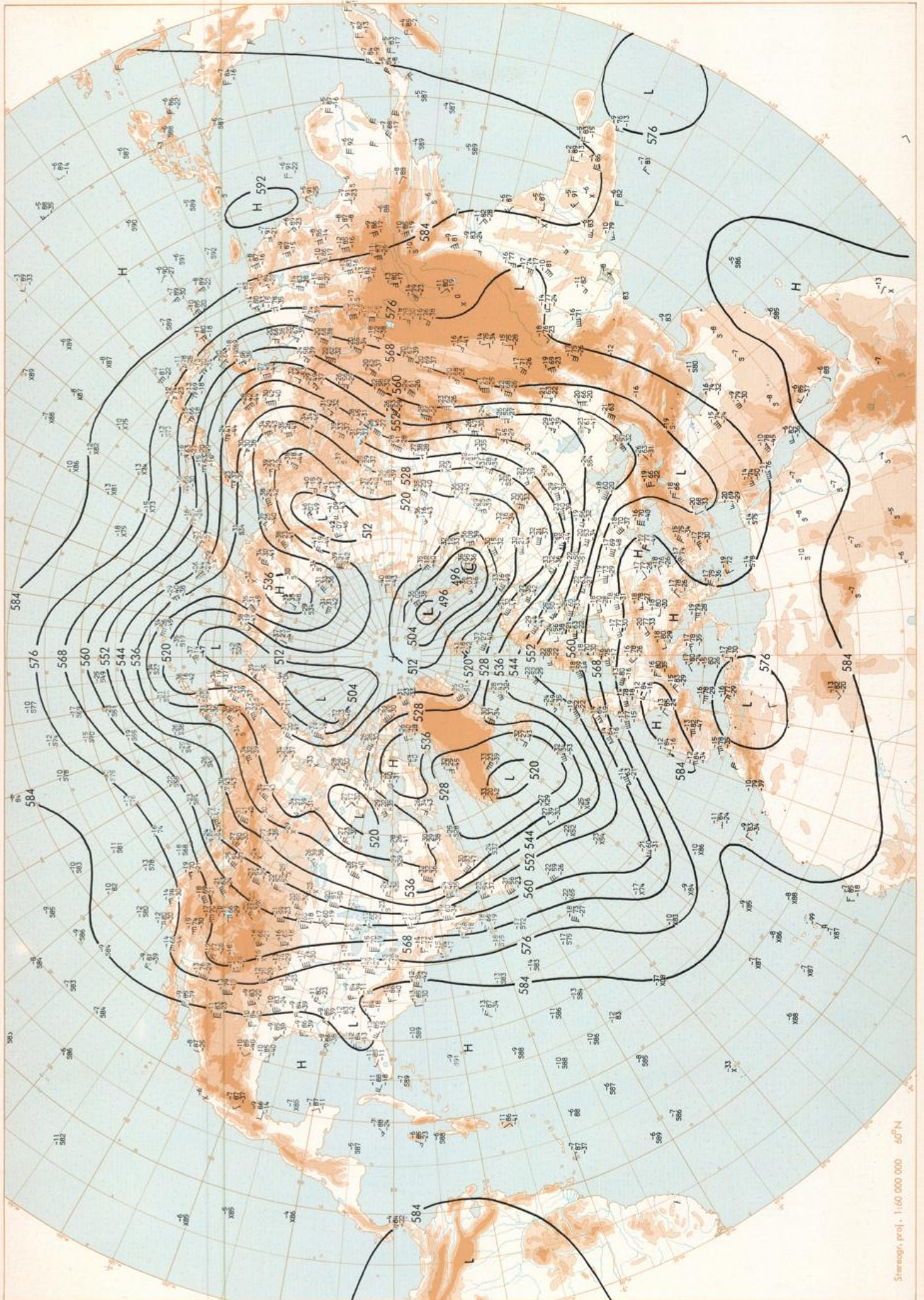


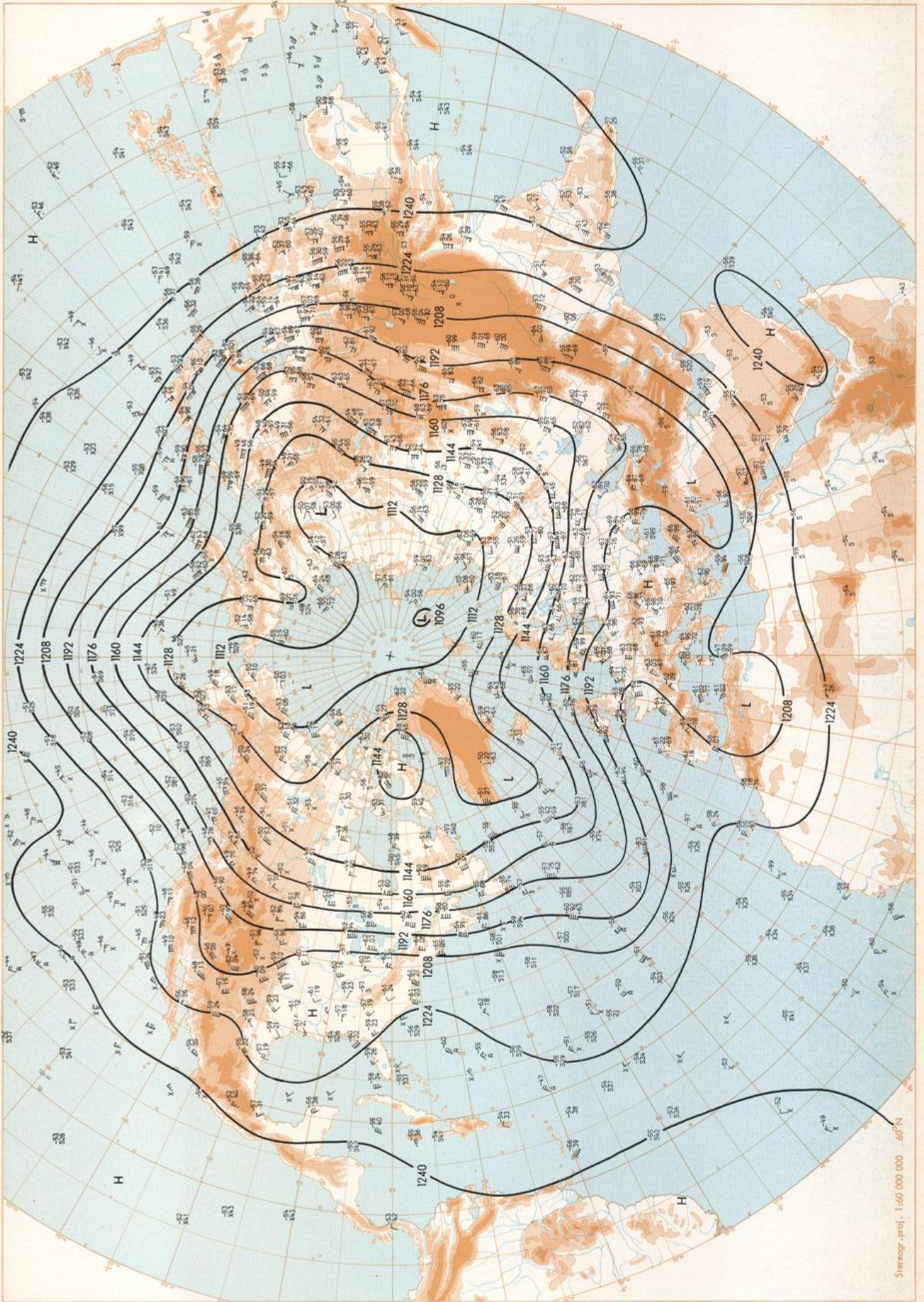
Surface chart OO GMT

Stereogr. proj. 1:500 000 000 60°N

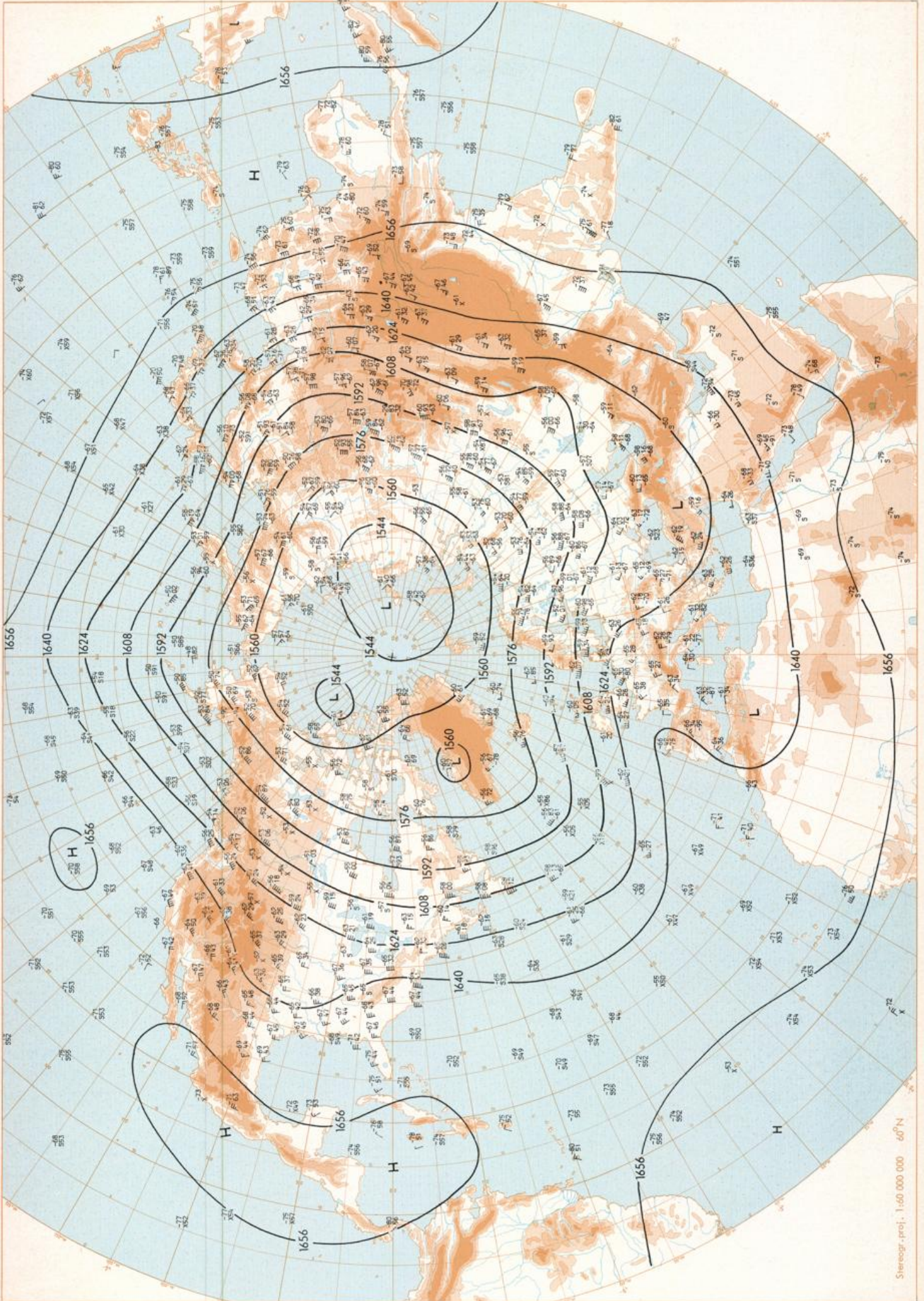


500 mbar OO GMT

Stereogr. proj., 1:60 000 000 60°N

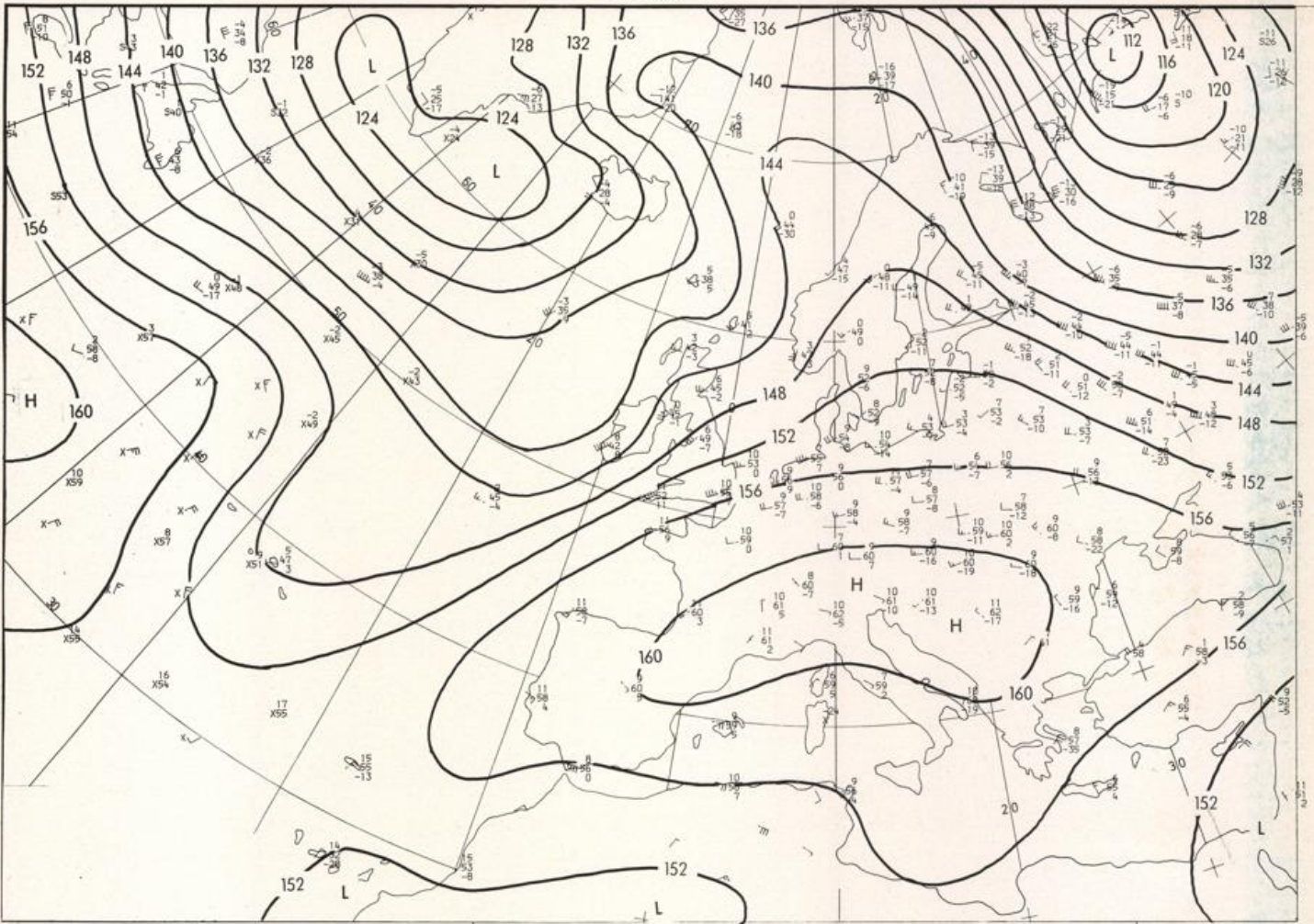


200 mbar OO GMT



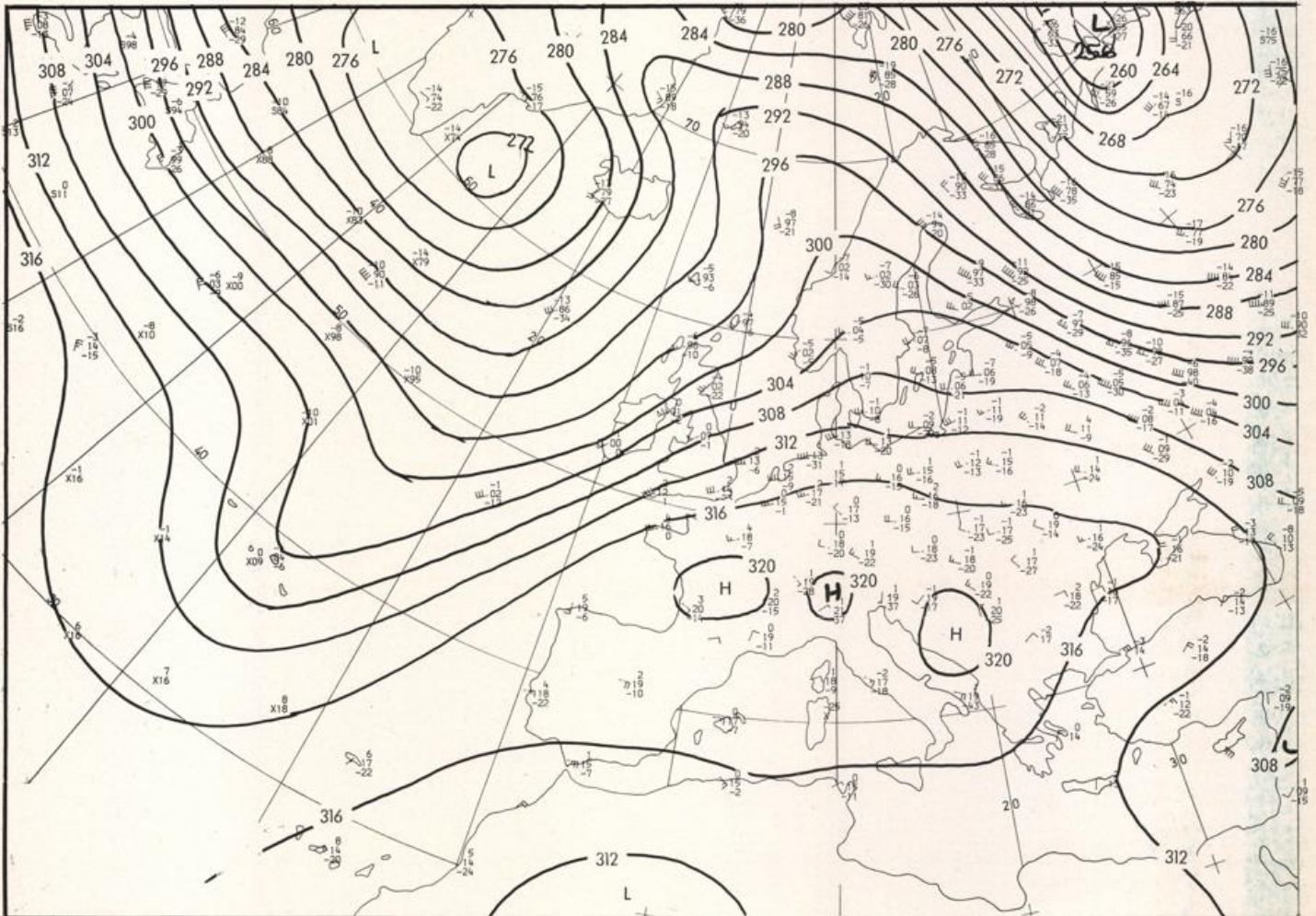
100 mbar OO GMT

Stereogr. proj. 1:60 000 000 60°N

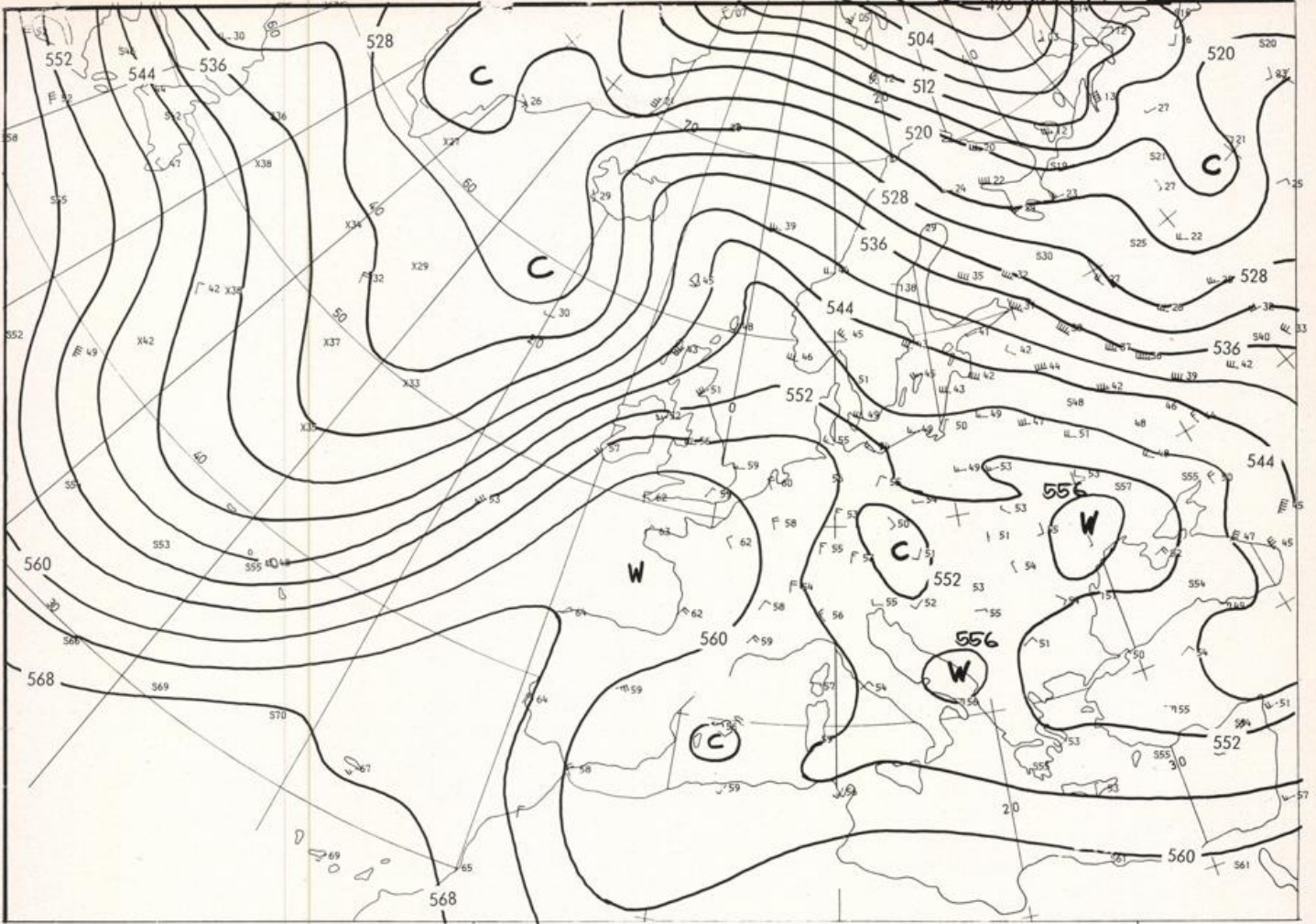


Stereogr. proj. 1:30 000 000 in 60°N

850 mbar 00 GMT

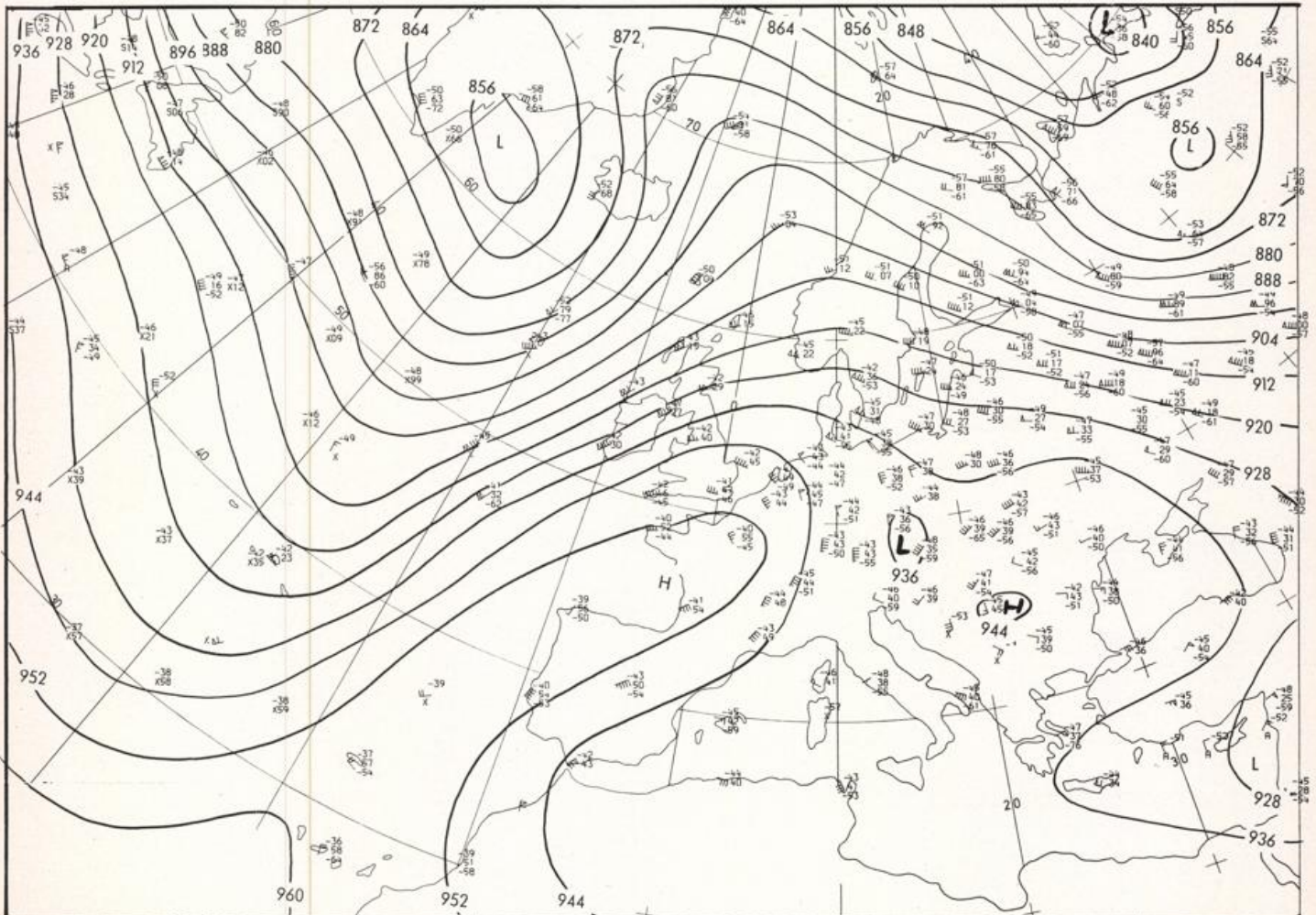


700 mbar 00 GMT



Stereogr.proj. 1:30 000 000 60°N

500/1000 mbar OO GMT



300 mbar OO GMT

