

Europäischer Wetterbericht European Meteorological Bulletin Bulletin Météorologique Européen Boletín Meteorológico Europeo

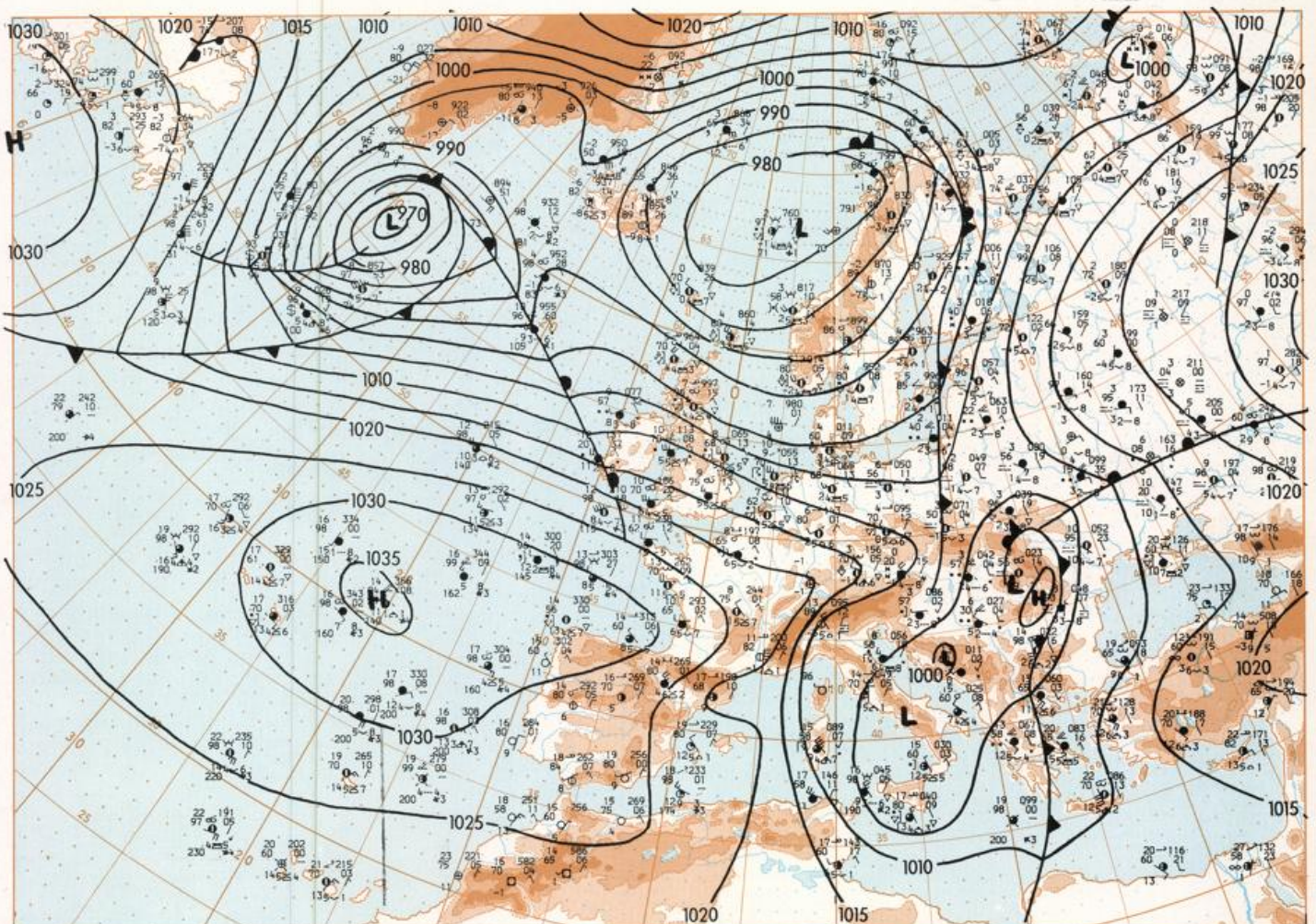
Amtsblatt des Deutschen Wetterdienstes

Druck und Verlag: Deutscher Wetterdienst — Zentralamt — D 6050 Offenbach am Main, Frankfurter Straße 135, Tel.: (06 11) 806 21

| | | | |
|---|--|------------------------------------|--|
| Erscheint täglich | Issued daily | Publié quotidiennement | Se publica diariamente |
| Bezugspreis monatlich 30,00 DM zuzügl. Porto | Monthly price 30,00 DM plus postage | Prix mensuel 30,00 DM plus port | Precio de suscripción mensual 30,00 DM plus porte |
| Nachdruck nicht gestattet | All rights reserved | Reproduction interdite | Se prohíbe la reproducción |

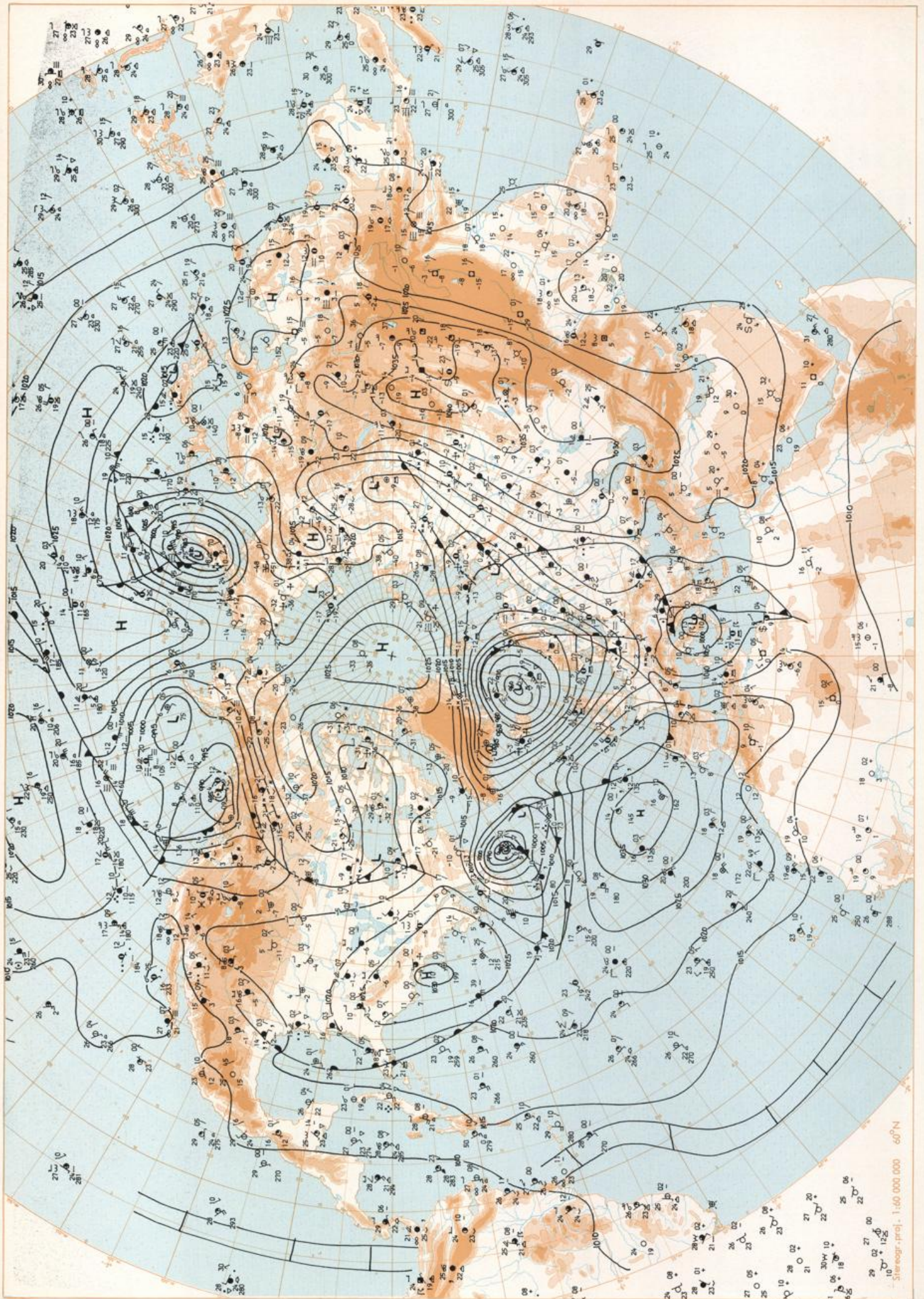
| | | | | | |
|---|---|--|------------|----------------------------|-----|
| Jahrgang Volume Volume Volumen | 7 | Mittwoch Wednesday Mercredi Miércoles | 17.11.1982 | Nummer Number Número | 321 |
|---|---|--|------------|----------------------------|-----|

| | | | |
|--|---|---|--|
| Inhalt | Content | Contenu | Contenido |
| Bodenwetterkarte 12 MGZ | Surface chart 12 GMT | Carte de surface à 12 TU | Análisis en superficie a los 12 T.M.G. |
| Bodenwetterkarte Nordhemisphäre 00 MGZ | Surface chart northern hemisphere 00 GMT | Carte de surface sur l'hémisphère nord à 00 TU | Análisis en superficie hemisferio norte a los 00 T.M.G. |
| 500-mbar-Fläche Nordhemisphäre 00 MGZ | 500 mbar surface northern hemisphere 00 GMT | Surface 500 mbar sur l'hémisphère nord à 00 TU | Topografía de la superficie de 500 mbar hemisferio norte a los 00 T.M.G. |
| 200-mbar-Fläche Nordhemisphäre 00 MGZ | 200 mbar surface northern hemisphere 00 GMT | Surface 200 mbar sur l'hémisphère nord à 00 TU | Topografía de la superficie de 200 mbar hemisferio norte a los 00 T.M.G. |
| 100-mbar-Fläche Nordhemisphäre 00 MGZ | 100 mbar surface northern hemisphere 00 GMT | Surface 100 mbar sur l'hémisphère nord à 00 TU | Topografía de la superficie de 100 mbar hemisferio norte a los 00 T.M.G. |
| 850 mbar 00 MGZ, 700 mbar 00 MGZ | 850 mbar 00 GMT, 700 mbar 00 GMT | 850 mbar 00 TU, 700 mbar 00 TU | 850 mbar 00 T.M.G., 700 mbar 00 T.M.G. |
| Relative Topographie 500/1000 mbar 00 MGZ | Thickness chart 500/1000 mbar 00 GMT | Carte d'épaisseur 500/1000 mbar 00 TU | Relativa 500/1000 mbar 00 T.M.G. |
| 300 mbar 00 MGZ | 300 mbar 00 GMT | 300 mbar 00 TU | 300 mbar 00 T.M.G. |
| 24tdg Bodendruckänderung 00 MGZ | 24 hr surface pressure change 00 GMT | Variations de pression en 24 h (niveau mer) en mbar à 00 TU | Variación de la presión del suelo 24 h en mbar a los 00 T.M.G. |
| 24tdg Änderung relative Topographie 500/1000 mbar 00 MGZ | 24 hr thickness change 500/1000 mbar 00 GMT | Variations d'épaisseur 500/1000 mbar en 24 h 00 TU | Variación de espesor 500/1000 mbar en 24 h 00 T.M.G. |
| Aerologische Diagramme 00 MGZ | Aerological diagrams 00 GMT | Diagrammas aerologiques 00 TU | Diagramas aerológicos 00 T.M.G. |



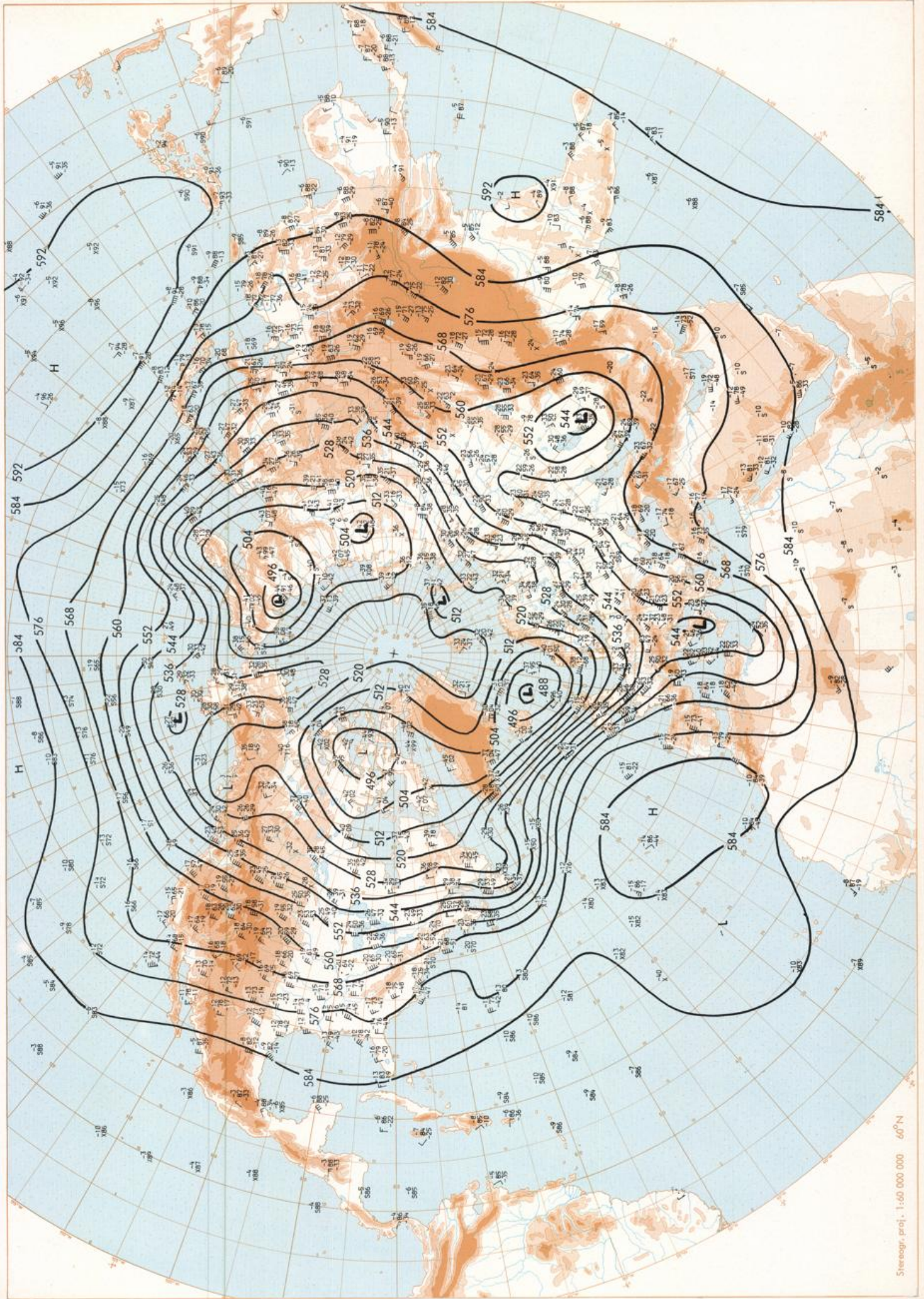
Stereogr. proj. 1:30 000 000 60°N

Surface chart 12 GMT

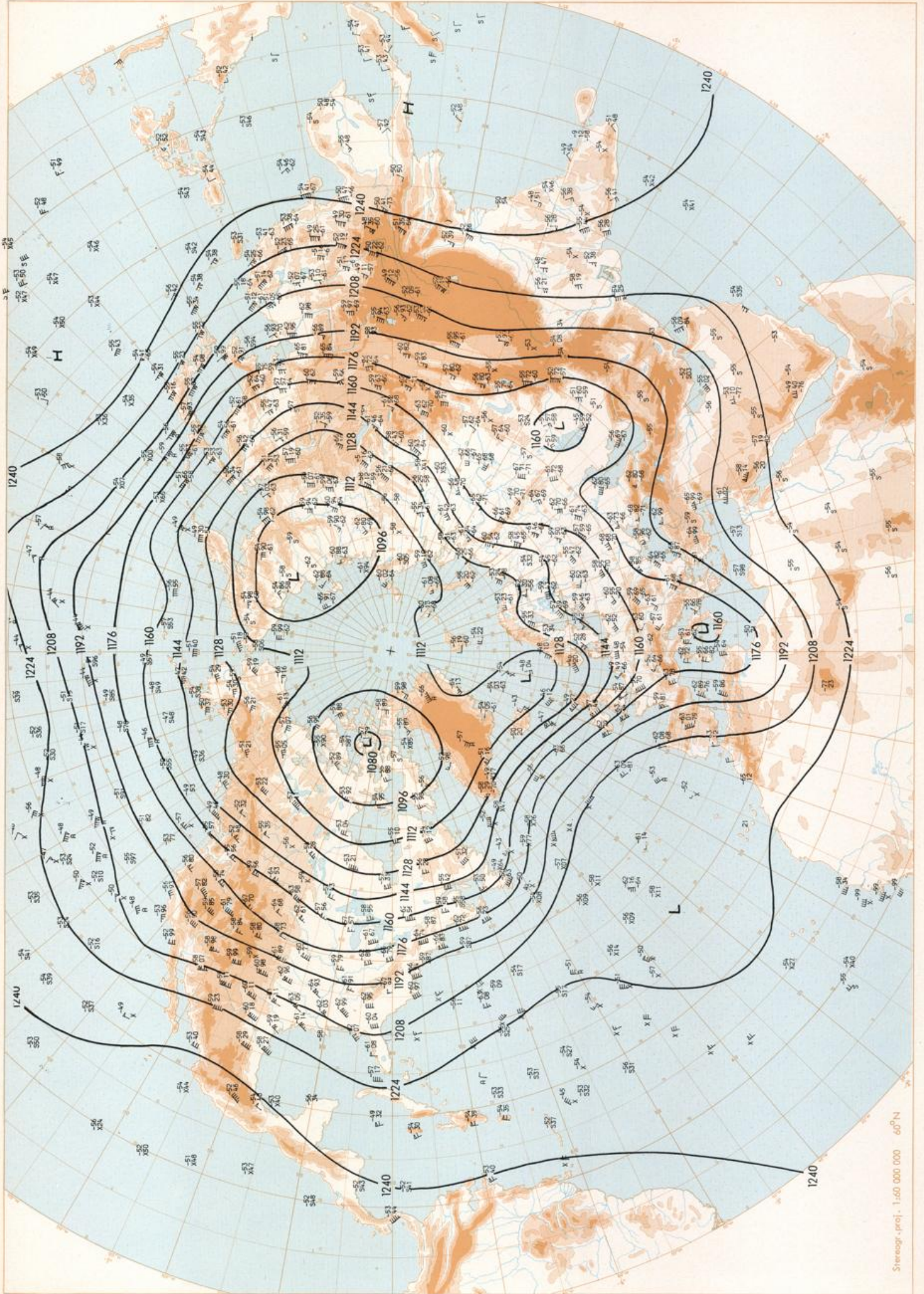


Surface chart 00 GMT

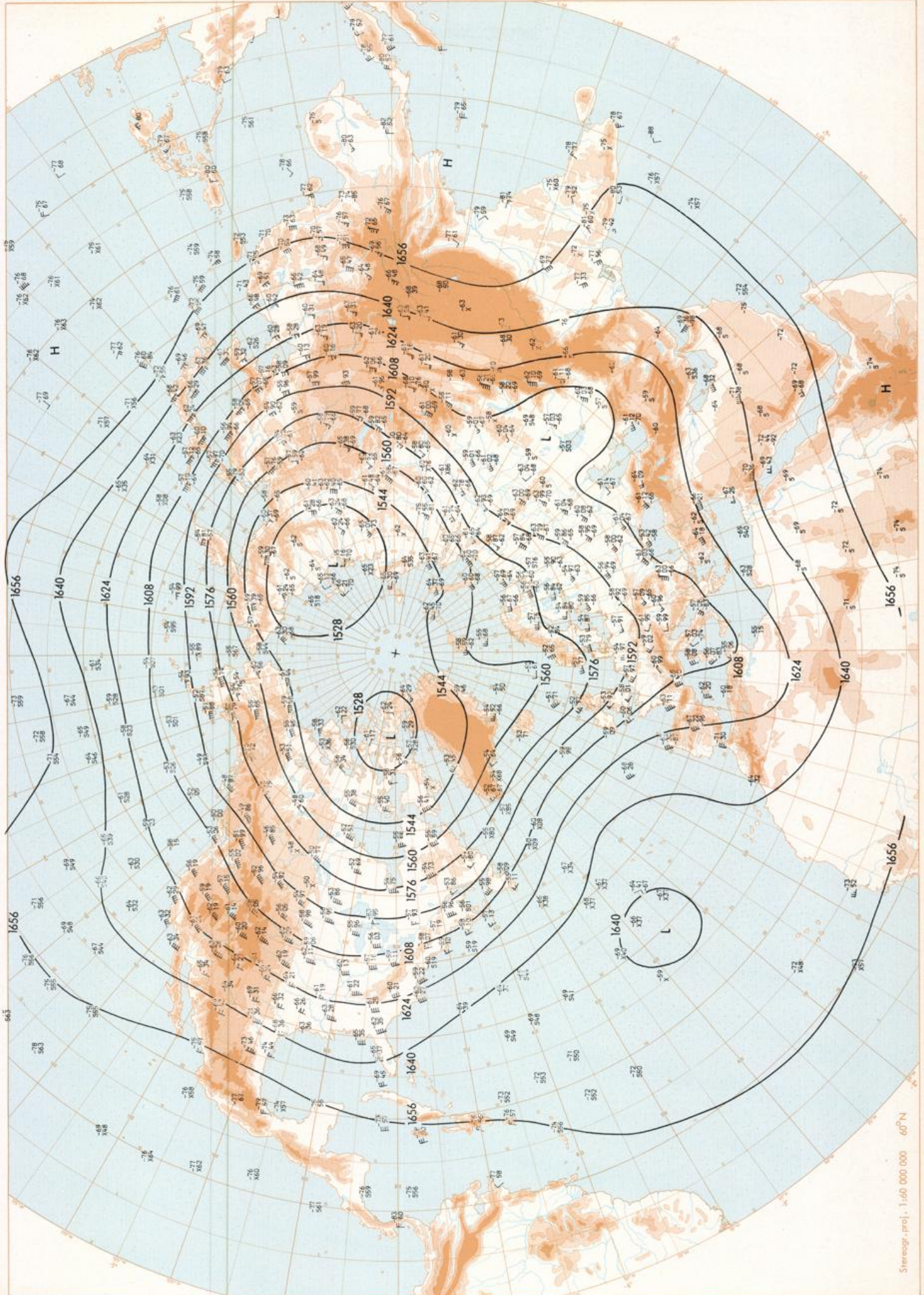
Stereogr. proj. - 1:60 000 000 60°N



500 mbar OO GMT

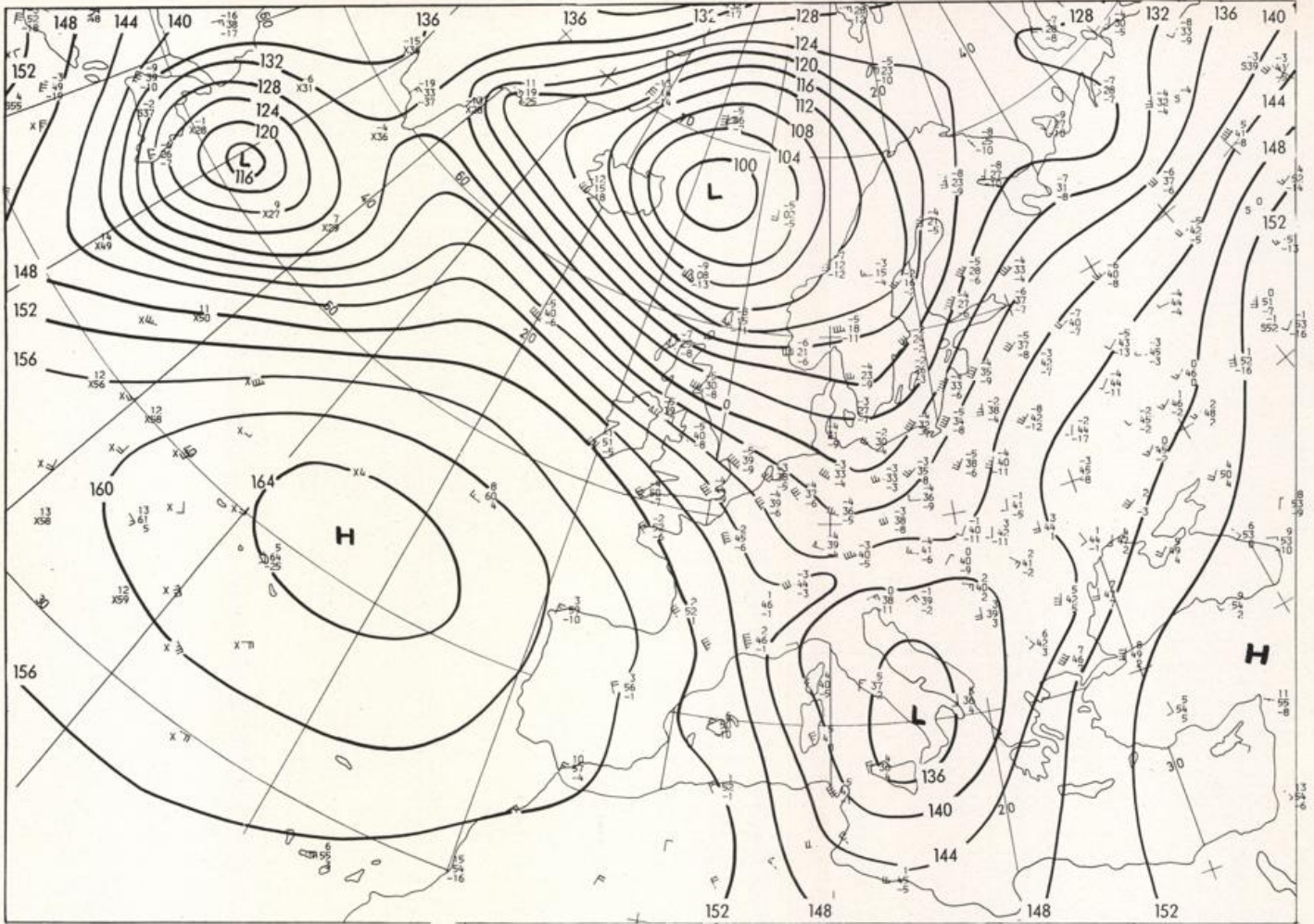


200 mbar OO GMT



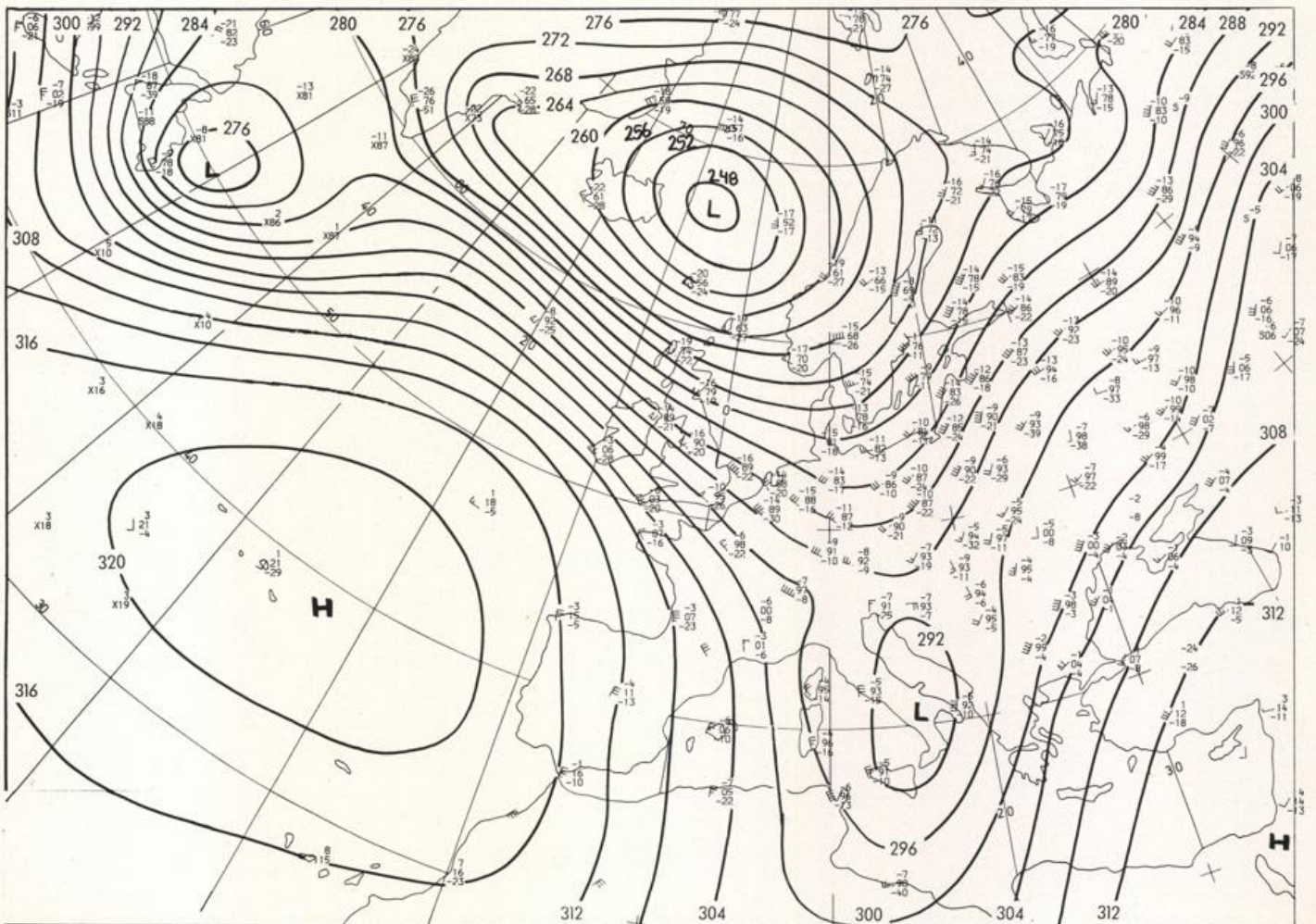
100 mbar OO GMT

Stereogr. proj. 1:60 000 000 60°N



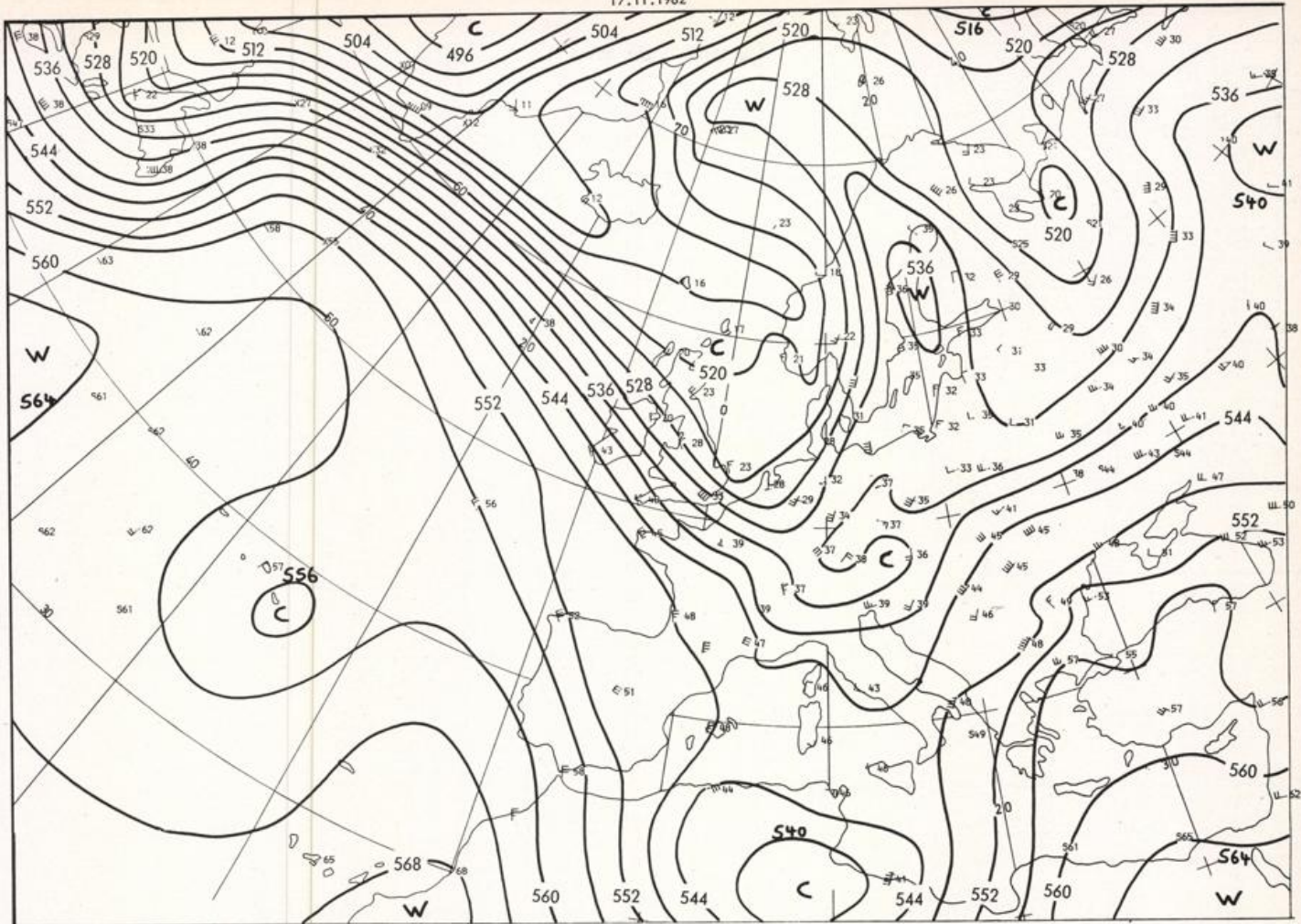
Stereogr. proj. 1:30 000 000 in 60°N

850 mbar OO GMT



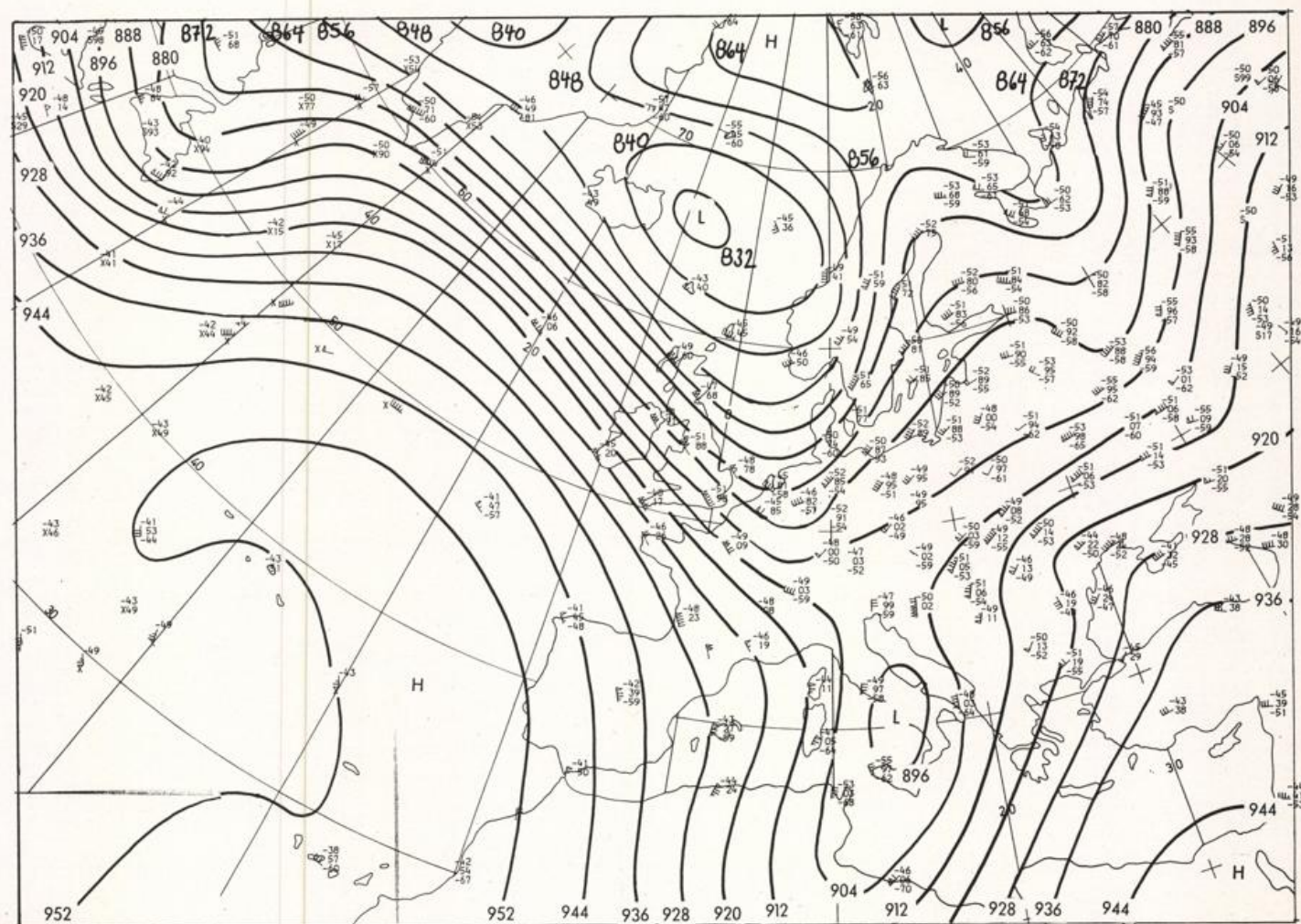
700 mbar OO GMT

17.11.1982

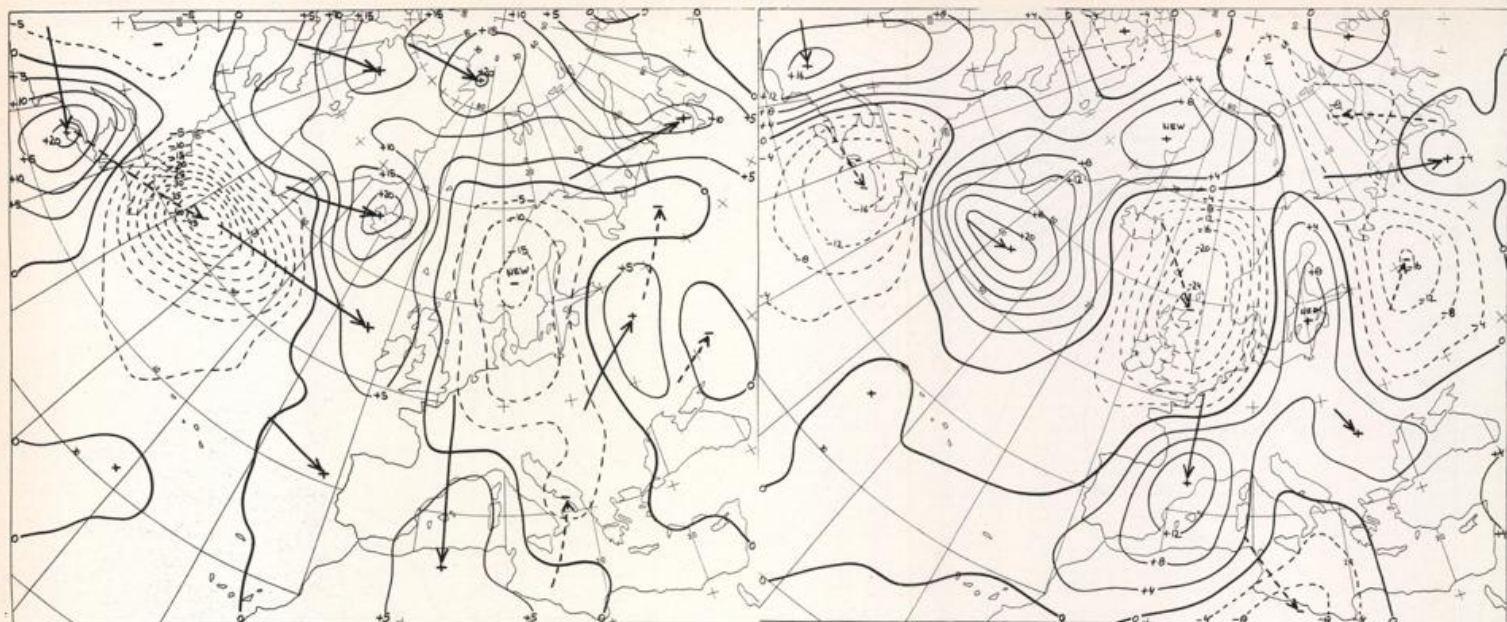


Stereogr. proj. 1:30 000 000 60°N

500/1000 mbar OO GMT



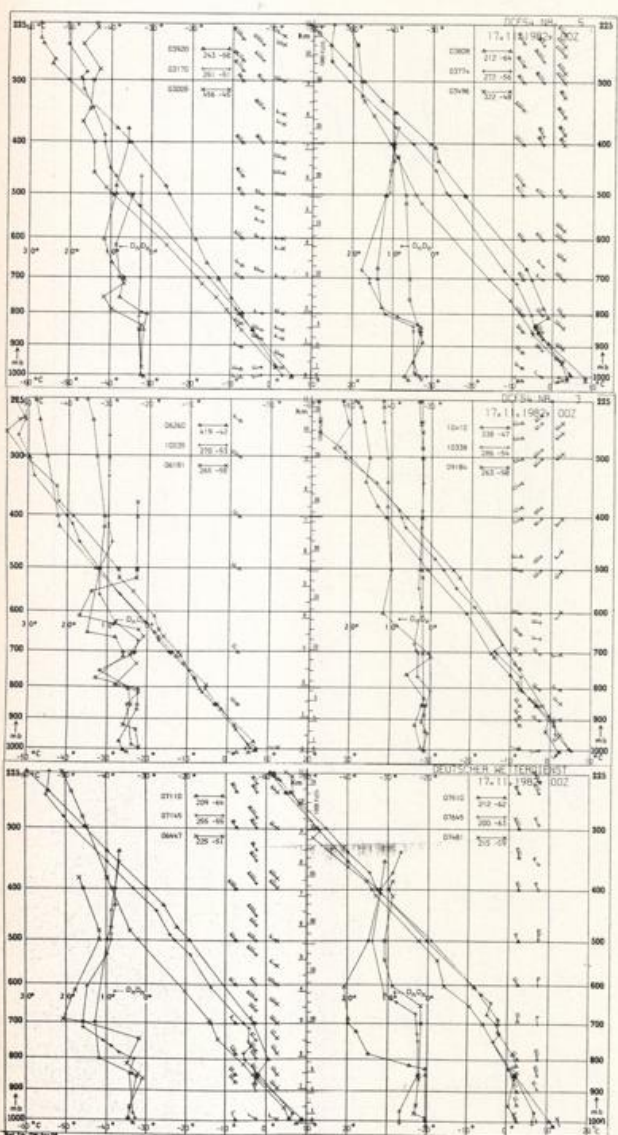
300 mbar OO GMT



Stereogr. proj. 1:60 000 000

24 hr surface pressure change OO GMT

24 hr thickness change OO GMT



Aerological Diagrams 00 GMT

- 01241 Orland
- 01384 Oslo
- 01415 Stavanger
- 02465 Stockholm
- 02527 Goteborg
- 03005 Lerwick
- 03170 Shanwell
- 03496 Hemsby
- 03774 Crawley
- 03808 Camborne
- 03920 Long Kesh
- 06181 Kobenhavn
- 06260 De Bilt
- 06447 Uccle
- 06610 Payeme
- 07110 Brest
- 07145 Trappes
- 07481 Lyon
- 07510 Bordeaux
- 07645 Nimes
- 09184 Greifswald
- 09393 Lindenberg
- 09548 Meiningen
- 10035 Schleswig
- 10338 Hannover
- 10410 Essen
- 10739 Stuttgart
- 10868 München-Oberschleißheim
- 11035 Wien
- 11520 Praha-Libus
- 12374 Legionowo
- 12843 Budapest
- 13275 Beograd
- 16044 Udine
- 16080 Milano
- 16242 Roma

