

Europäischer Wetterbericht European Meteorological Bulletin Bulletin Météorologique Européen Boletín Meteorológico Europeo

Amtsblatt des Deutschen Wetterdienstes

Druck und Verlag: Deutscher Wetterdienst — Zentralamt — D 6050 Offenbach am Main, Frankfurter Straße 135, Tel.: (0611) 80621

Erscheint täglich
Bezugspreis monatlich 30.00 DM
zuzügl. Porto
Nachdruck nicht gestattet

Issued daily
Monthly price 30.00 DM
plus postage
All rights reserved

Publié quotidiennement
Prix mensuel 30.00 DM
plus port
Reproduction interdite

Se publica diariamente
Precio de suscripción mensual 30.00 DM
plus porte
Se prohíbe la reproducción

Jahrgang
Volume 7

Samstag
Saturday
Samedi
18.09.1982
Sábado

Nummer
Number
Número
261
Número

Inhalt
Bodenwetterkarte 12 MGZ
Bodenwetterkarte Nordhemisphäre 00 MGZ
500-mbar-Fläche Nordhemisphäre 00 MGZ
200-mbar-Fläche Nordhemisphäre 00 MGZ
100-mbar-Fläche Nordhemisphäre 00 MGZ
850 mbar 00 MGZ, 700 mbar 00 MGZ
Relative Topographie 500/1000 mbar 00 MGZ
300 mbar 00 MGZ
24stg. Bodendruckänderung 00 MGZ
24stg. Änderung relative Topographie
500/1000 mbar 00 MGZ

Content
Surface chart 12 GMT
Surface chart northern hemisphere 00 GMT
500 mbar surface northern hemisphere 00 GMT
200 mbar surface northern hemisphere 00 GMT
100 mbar surface northern hemisphere 00 GMT
850 mbar 00 GMT, 700 mbar 00 GMT
Thickness chart 500/1000 mbar 00 GMT
300 mbar 00 GMT
24 hr surface pressure change 00 GMT
24 hr thickness change
500/1000 mbar 00 GMT

Contenu
Carte de surface 0-12 TU
Carte de surface sur l'hémisphère nord 00 TU
Surface 500 mbar sur l'hémisphère nord 00 TU
Surface 200 mbar sur l'hémisphère nord 00 TU
Surface 100 mbar sur l'hémisphère nord 00 TU
850 mbar 00 TU, 700 mbar 00 TU
Cote d'épaisseur 500/1000 mbar 00 TU
300 mbar 00 TU
Variations de pression en 24 h (niveau mer)
en mbar 00 TU
Variations d'épaisseur 500/1000 mbar
en 24 h 00 TU
Diagrammes aérologiques 00 TU

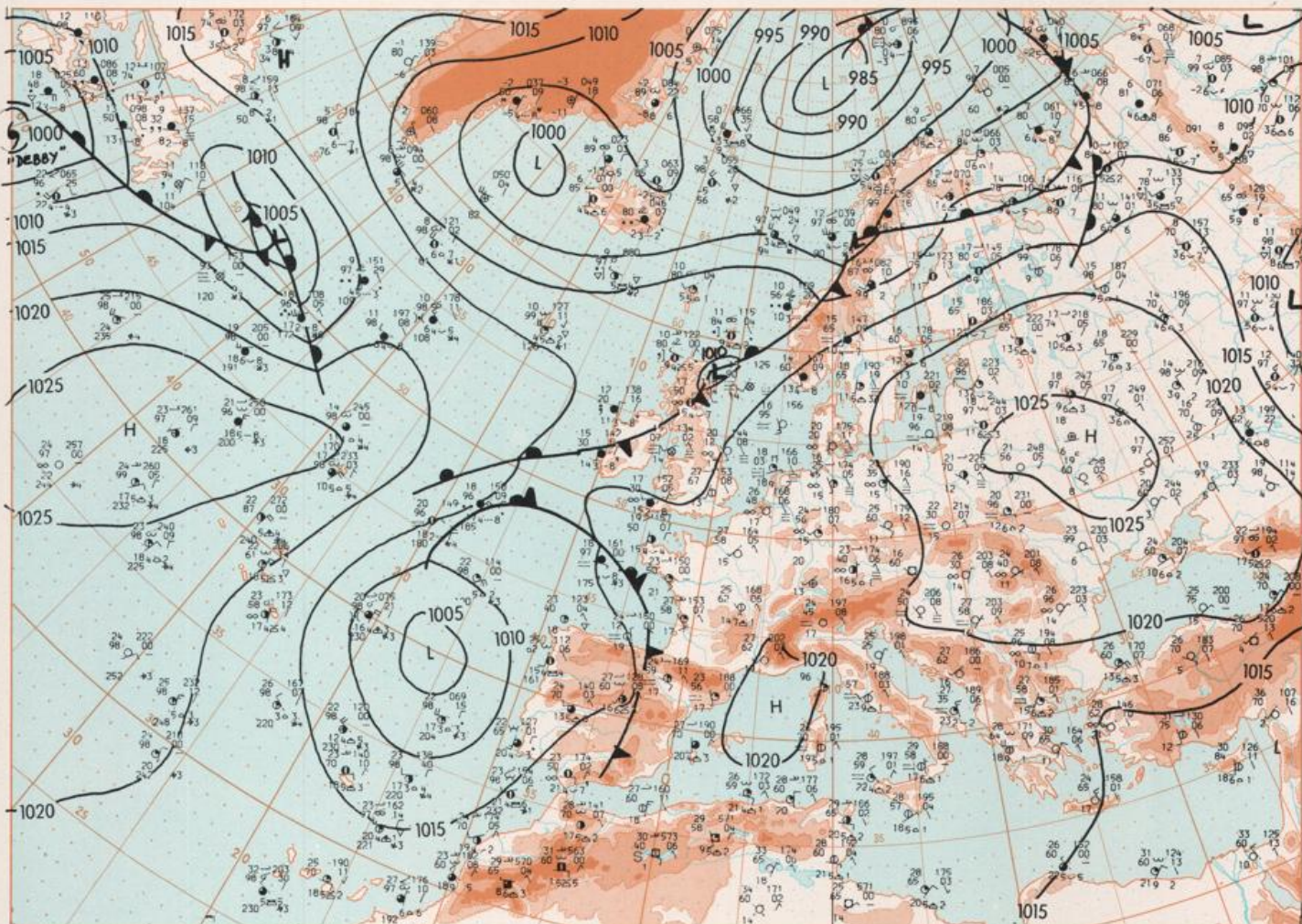
Contenido
Análisis en superficie a las 12 T.M.G.
Análisis en superficie hemisferio norte a las 00 T.M.G.
Topografía de la superficie de 500 mbar hemisferio norte a las 00 T.M.G.
Topografía de la superficie de 200 mbar hemisferio norte a las 00 T.M.G.
Topografía de la superficie de 100 mbar hemisferio norte a las 00 T.M.G.
850 mbar 00 T.M.G., 700 mbar 00 T.M.G.
Variación de espesor 500/1000 mbar 00 T.M.G.
300 mbar 00 T.M.G.
Variación de la presión del suelo 24 h en mbar a las 00 T.M.G.
Variación de espesor 500/1000 mbar en 24 h 00 T.M.G.
Diagramas aérologicos 00 T.M.G.

Aerologische Diagramme 00 MGZ

Aerological diagrams 00 GMT

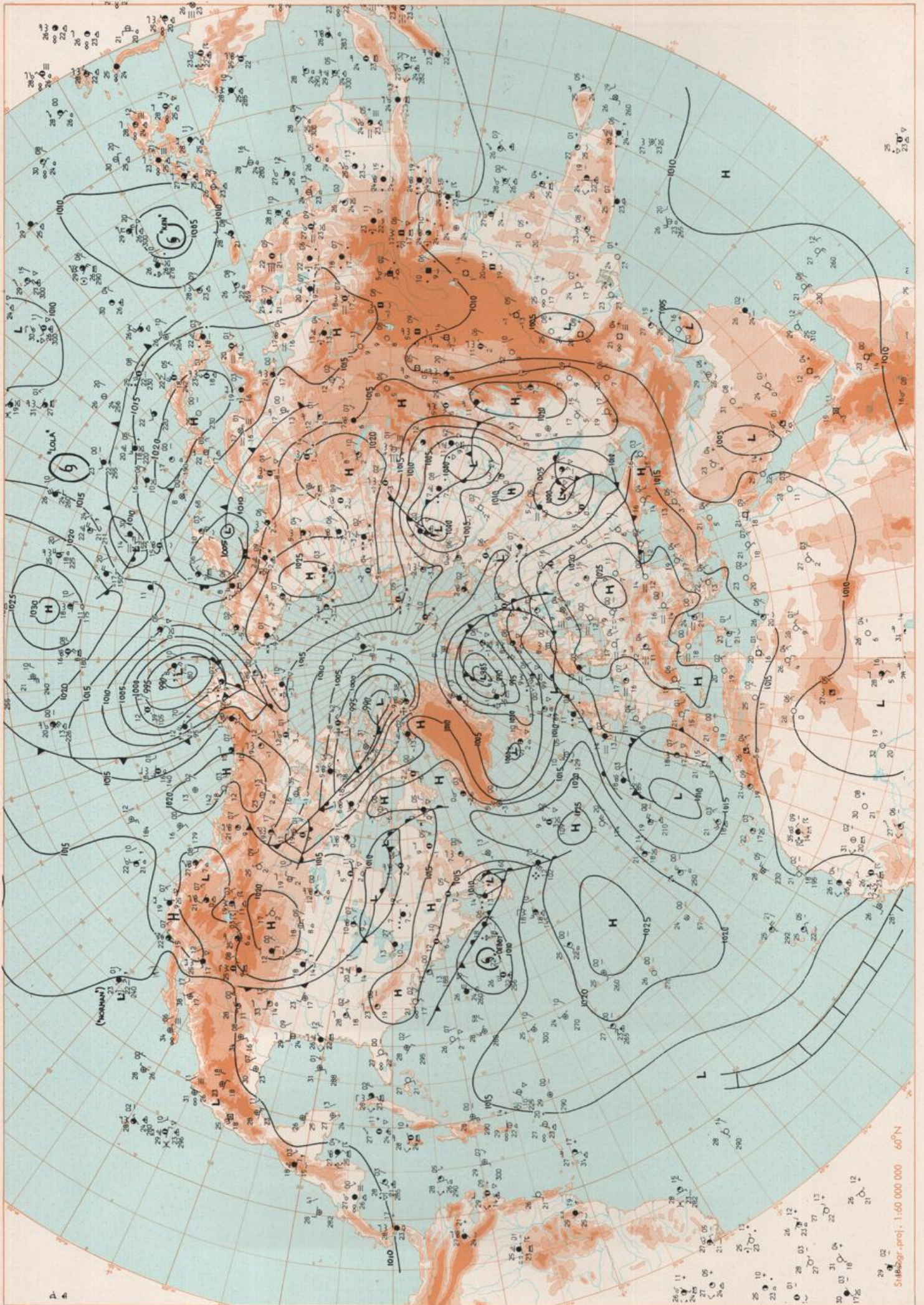
Diagrammes aérologiques 00 TU

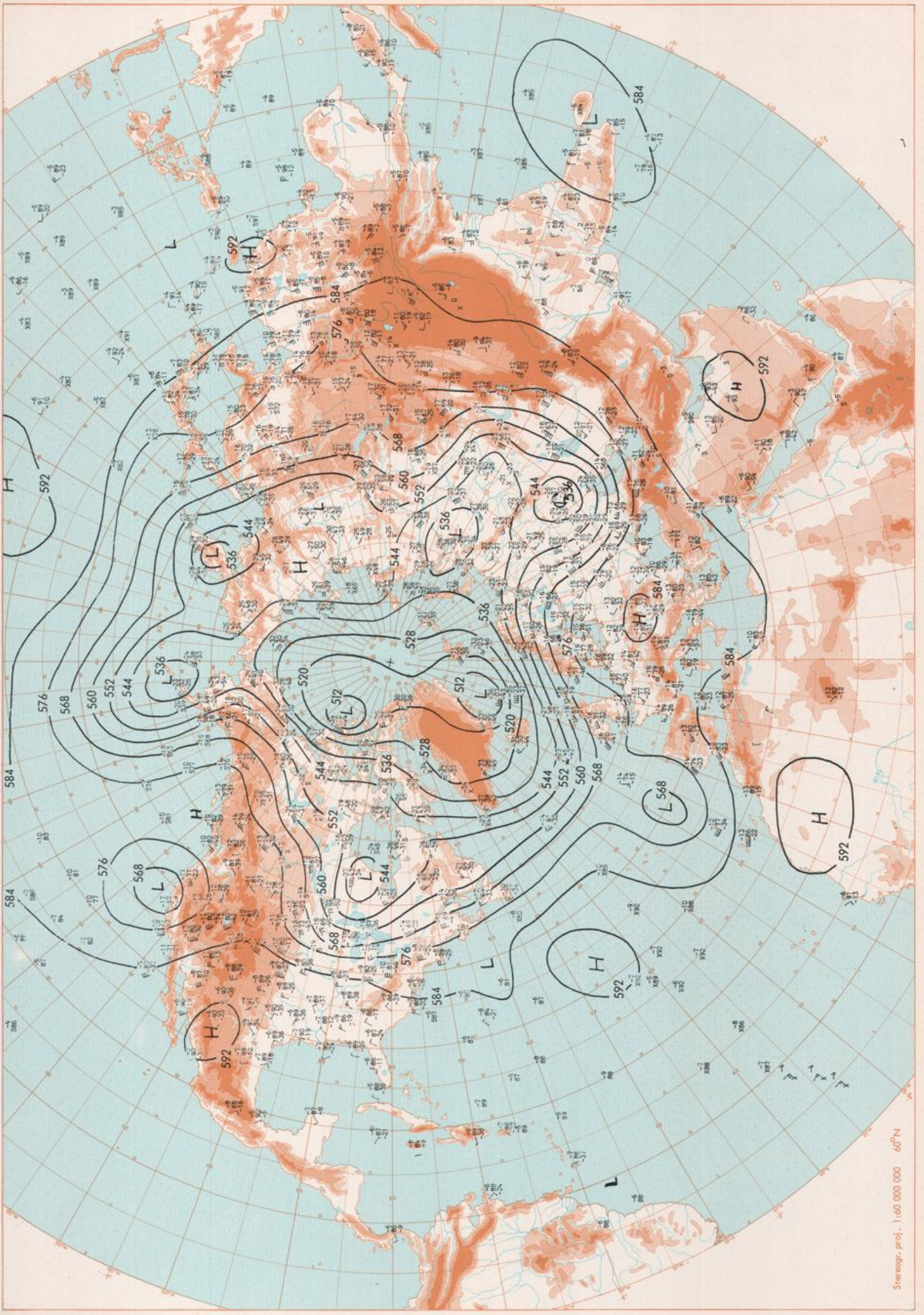
Diagramas aérologicos 00 T.M.G.



Stereogr. proj., 1:30 000 000, 60°N

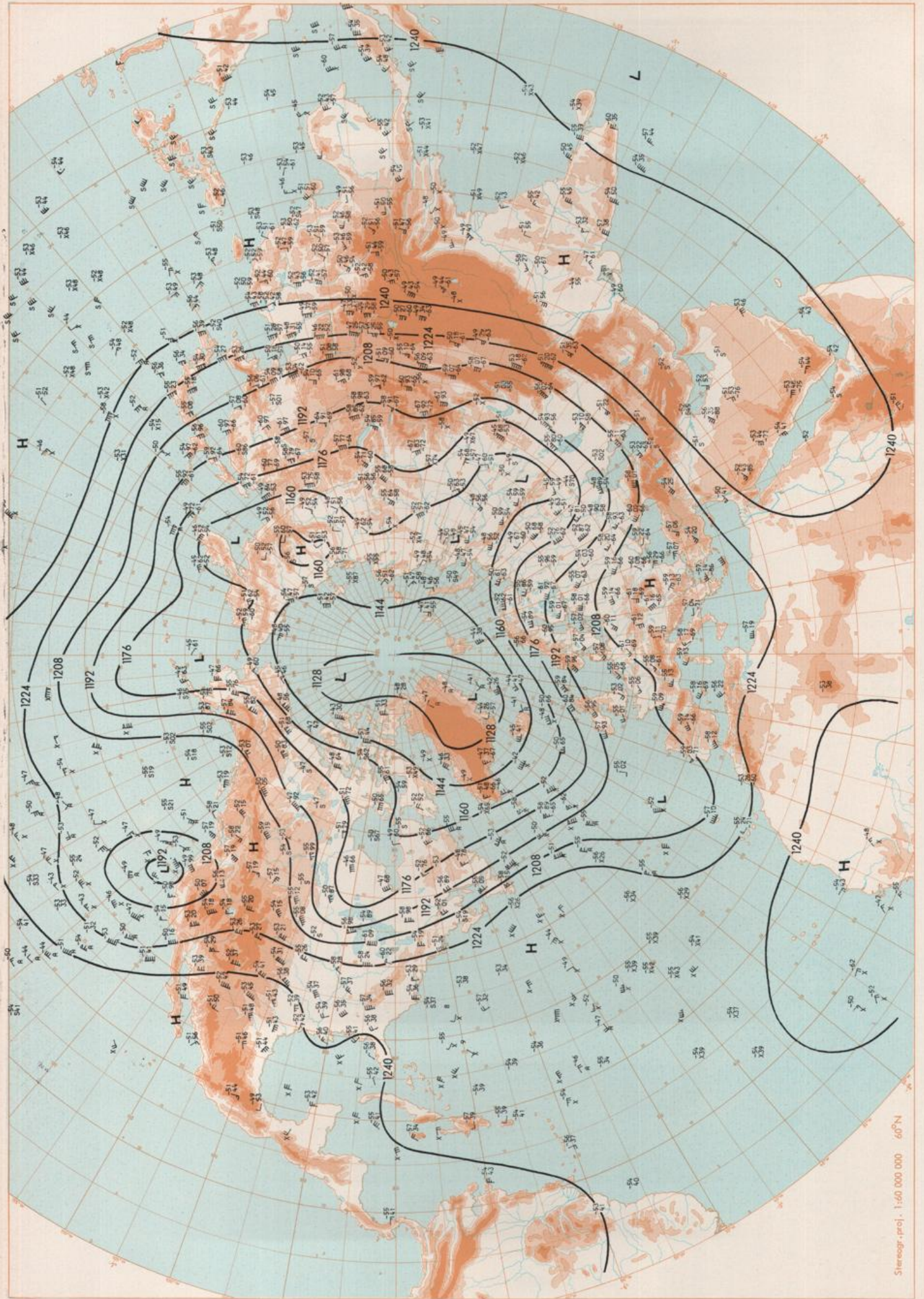
Surface chart 12 GMT



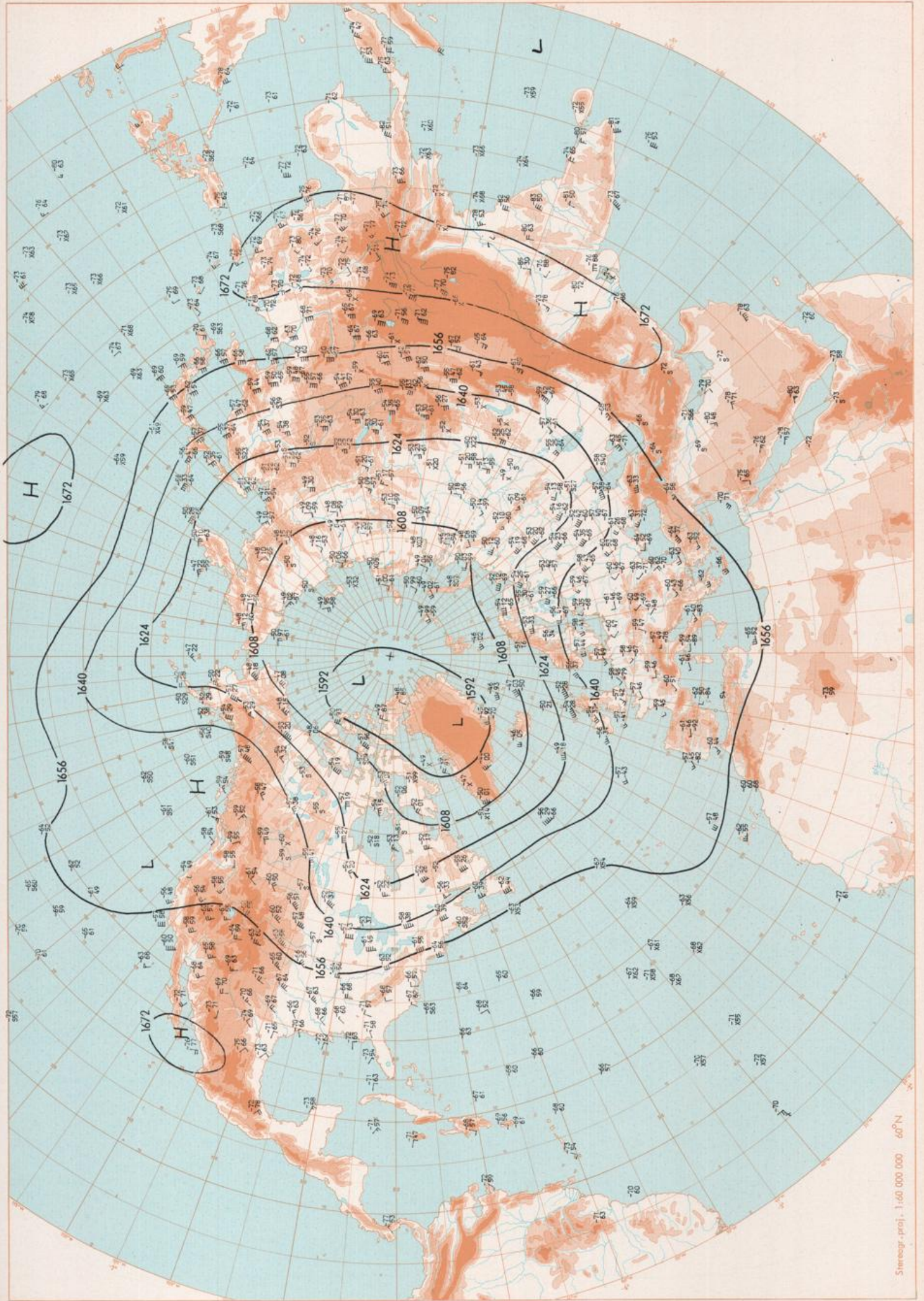


500 mbar OO GMT

Stereogr. proj. 1:60 000 000 60°N

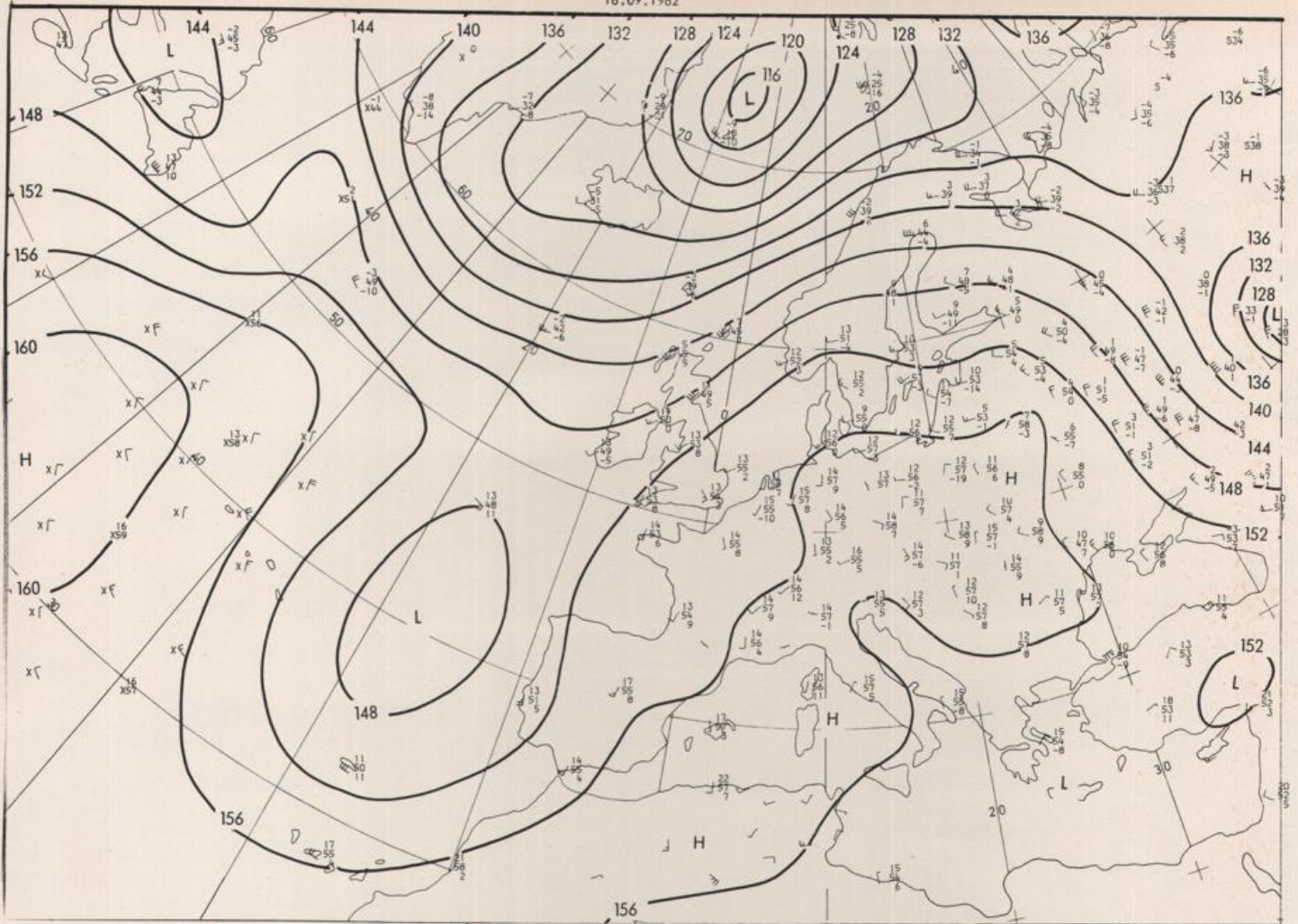


200 mbar OO GMT



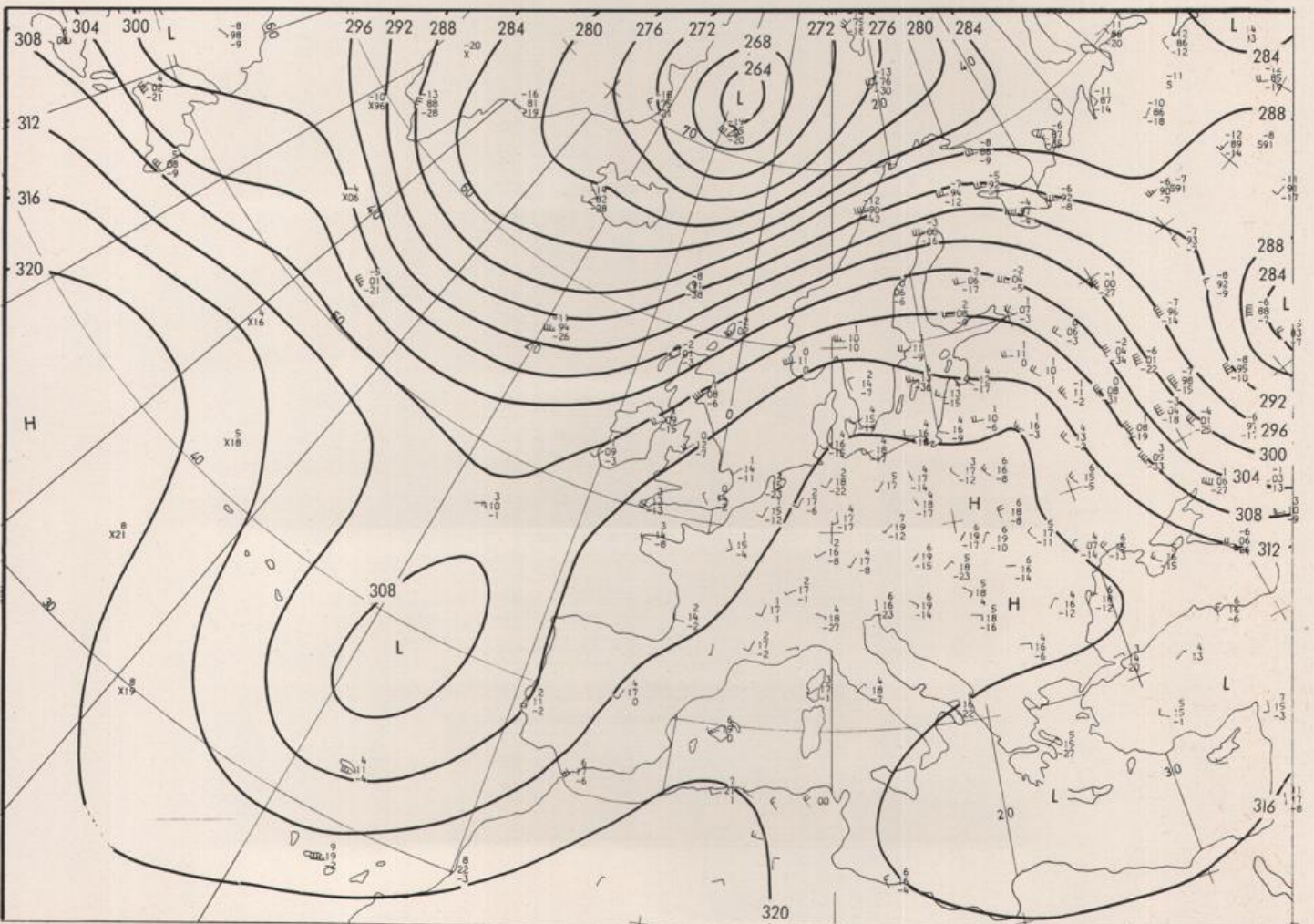
100 mbar OO GMT

Stereogr. proj. 1:60 000 000 60°N



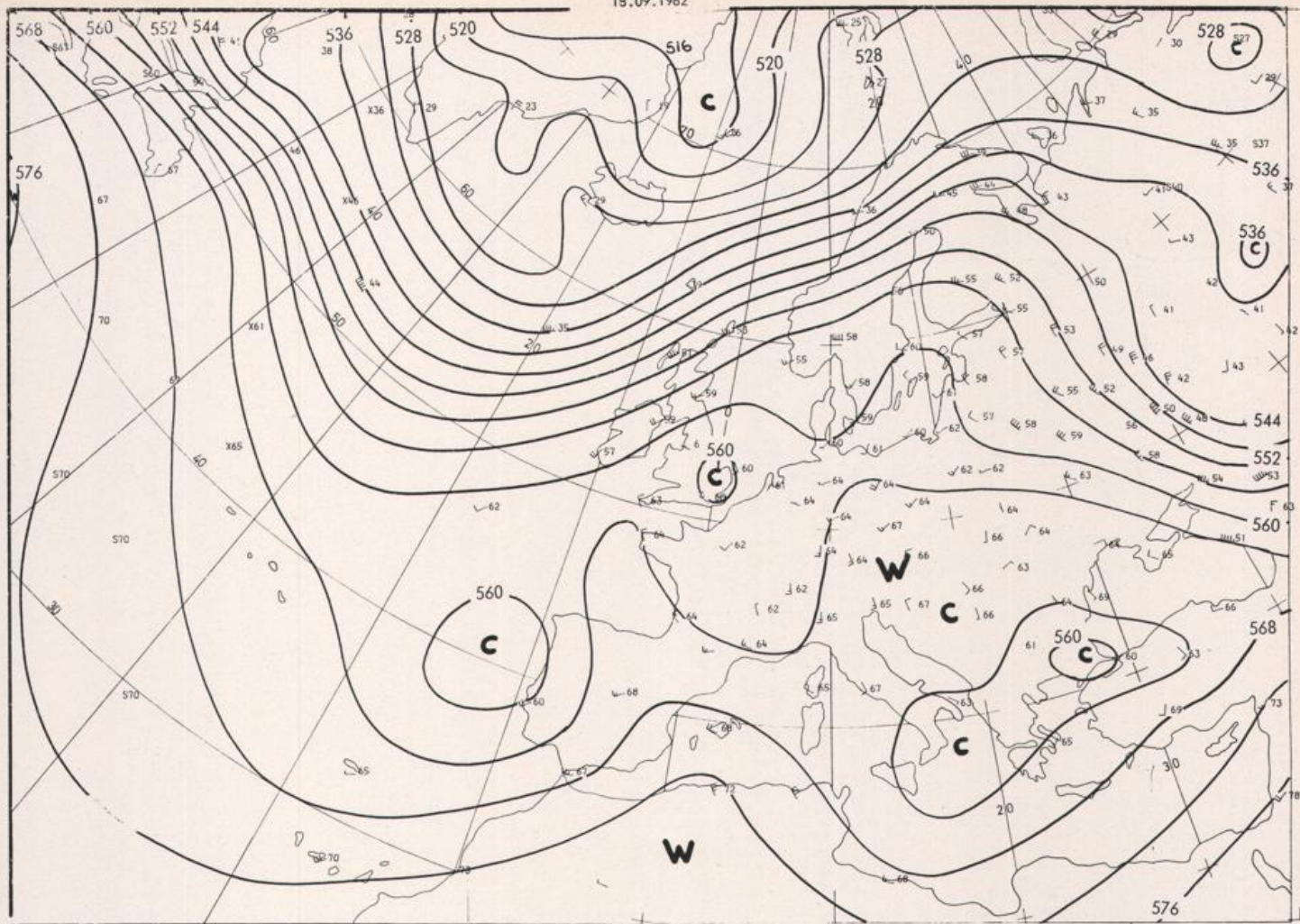
Stereogr. proj. 1:30 000 000 in 60°N

850 mbar OO GMT



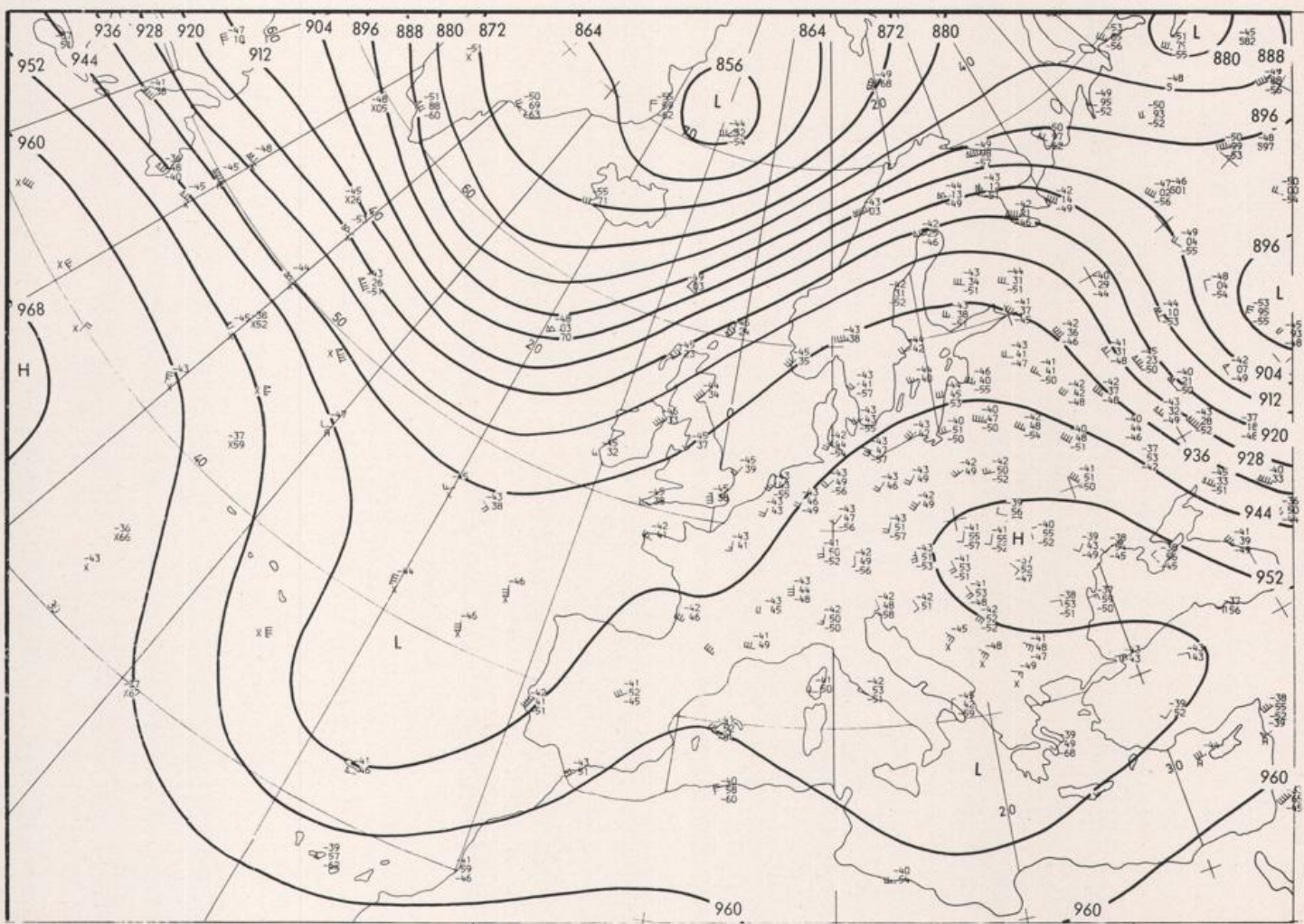
700 mbar OO GMT

19.09.1982

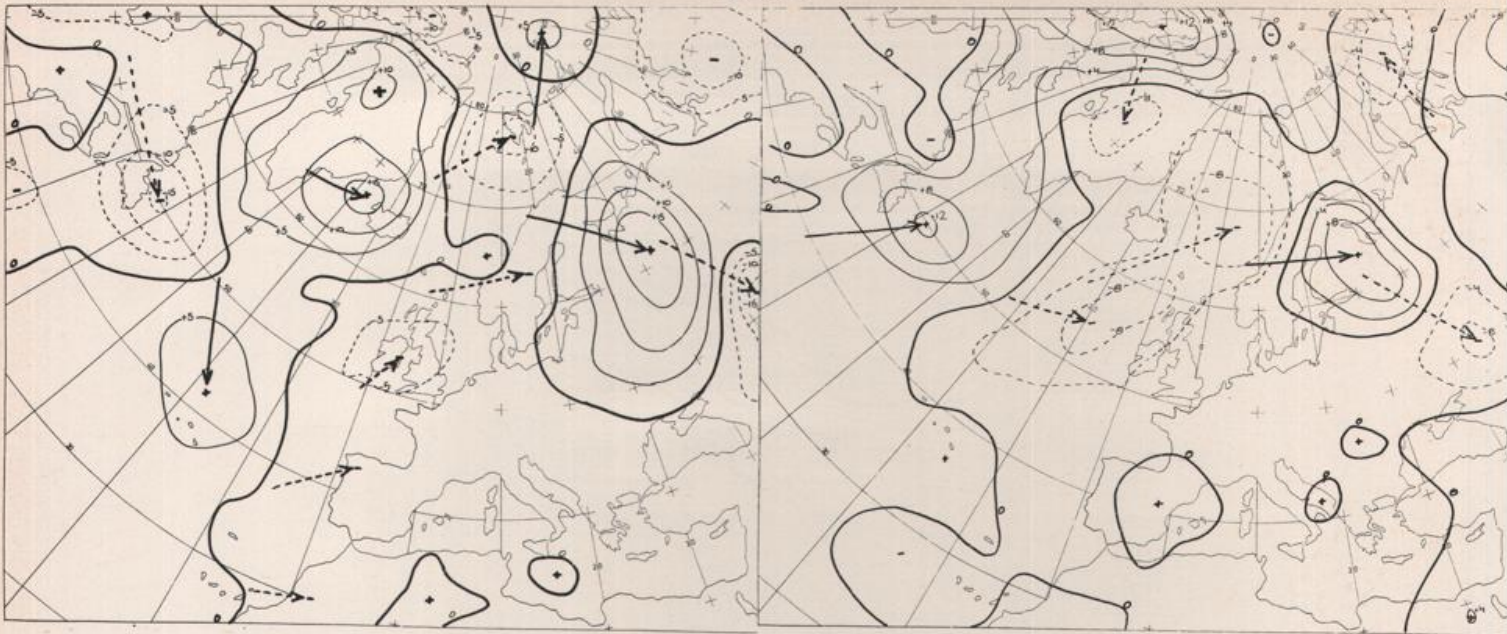


Stereogr. proj. 1:30 000 000 60°N

500/1000 mbar OO GMT



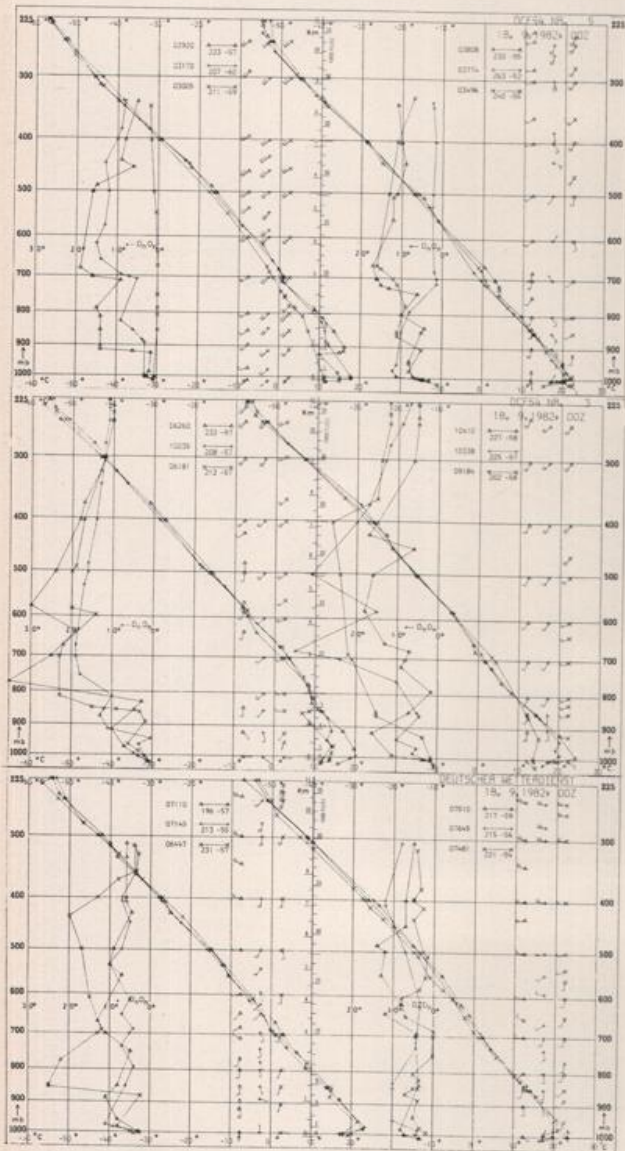
300 mbar OO GMT



24 hr surface pressure change OO GMT

Stereogr.proj. 1:60 000 000

24 hr thickness change OO GMT



Aerological Diagrams 00 GMT

- 01241 Orland
- 01384 Oslo
- 01415 Stavanger
- 02465 Stockholm
- 02527 Goteborg
- 03005 Lerwick
- 03170 Shanwell
- 03496 Hemsby
- 03774 Crawley
- 03808 Camborne
- 03920 Long Kesh
- 06181 Kobenhavn
- 06260 De Bilt
- 06447 Uccle
- 06610 Payame
- 07110 Brest
- 07145 Trappes
- 07481 Lyon
- 07510 Bordeaux
- 07645 Nimes
- 09184 Greifswald
- 09393 Lindenberg
- 09548 Meiningen
- 10035 Schleswig
- 10338 Hannover
- 10410 Essen
- 10739 Stuttgart
- 10868 München-Oberschleißheim
- 11035 Wien
- 11520 Praha-Libus
- 12374 Legionowo
- 12843 Budapest
- 13275 Beograd
- 16044 Udine
- 16080 Milano
- 16242 Roma

