

# Europäischer Wetterbericht European Meteorological Bulletin Bulletin Météorologique Européen Boletín Meteorológico Europeo

Amtsblatt des Deutschen Wetterdienstes

Druck und Verlag: Deutscher Wetterdienst — Zentralamt — D 6050 Offenbach am Main, Frankfurter Straße 135, Tel.: (0611) 80621

Ercheint täglich  
Bezugspreis monatlich 30.00 DM  
zuzügl. Porto  
Nachdruck nicht gestattet

Issued daily  
Monthly price 30.00 DM  
plus postage  
All rights reserved

Publié quotidiennement  
Prix mensuel 30.00 DM  
plus port  
Reproduction interdite

Se publica diariamente  
Precio de suscripción mensual 30.00 DM  
plus porte  
Se prohíbe la reproducción

Jahrgang  
Volume 7

Mittwoch  
Wednesday  
Mercredi 29.09.1982  
Miércoles

Nummer  
Number 272  
Número

Inhalt  
Bodenwetterkarte 12 MGZ  
Bodenwetterkarte Nordhemisphäre 00 MGZ  
500-mbar-Fläche Nordhemisphäre 00 MGZ

Content  
Surface chart 12 GMT  
Surface chart northern hemisphere 00 GMT  
500 mbar surface northern hemisphere 00 GMT

Contenu  
Carte de surface à 12 TU  
Carte de surface sur l'hémisphère nord à 00 TU  
Surface 500 mbar sur l'hémisphère nord à 00 TU

Contenido  
Análisis en superficie a las 12 T.M.G.  
Análisis en superficie hemisferio norte a las 00 T.M.G.  
Topografía de la superficie de 500 mbar hemisferio norte a las 00 T.M.G.

200-mbar-Fläche Nordhemisphäre 00 MGZ  
100-mbar-Fläche Nordhemisphäre 00 MGZ

200 mbar surface northern hemisphere 00 GMT  
100 mbar surface northern hemisphere 00 GMT

Surface 200 mbar sur l'hémisphère nord à 00 TU  
Surface 100 mbar sur l'hémisphère nord à 00 TU

Topografía de la superficie de 200 mbar hemisferio norte a las 00 T.M.G.  
Topografía de la superficie de 100 mbar hemisferio norte a las 00 T.M.G.

850 mbar 00 MGZ, 700 mbar 00 MGZ  
Relative Topographie 500/1000 mbar 00 MGZ  
300 mbar 00 MGZ

850 mbar 00 GMT, 700 mbar 00 GMT  
Thickness chart 500/1000 mbar 00 GMT  
300 mbar 00 GMT

850 mbar 00 TU, 700 mbar 00 TU  
Corte d'épaisseur 500/1000 mbar 00 TU  
300 mbar 00 TU

850 mbar 00 T.M.G., 700 mbar 00 T.M.G.  
Relativo 500/1000 mbar 00 T.M.G.  
300 mbar 00 T.M.G.

24stündig Boden druckänderung 00 MGZ  
24stündig Änderung relative Topographie  
500/1000 mbar 00 MGZ

24 hr surface pressure change 00 GMT  
24 hr thickness change  
500/1000 mbar 00 GMT

Variations de pression en 24 h (niveau mer)  
en mbar à 00 TU  
Variations d'épaisseur 500/1000 mbar  
en 24 h 00 TU

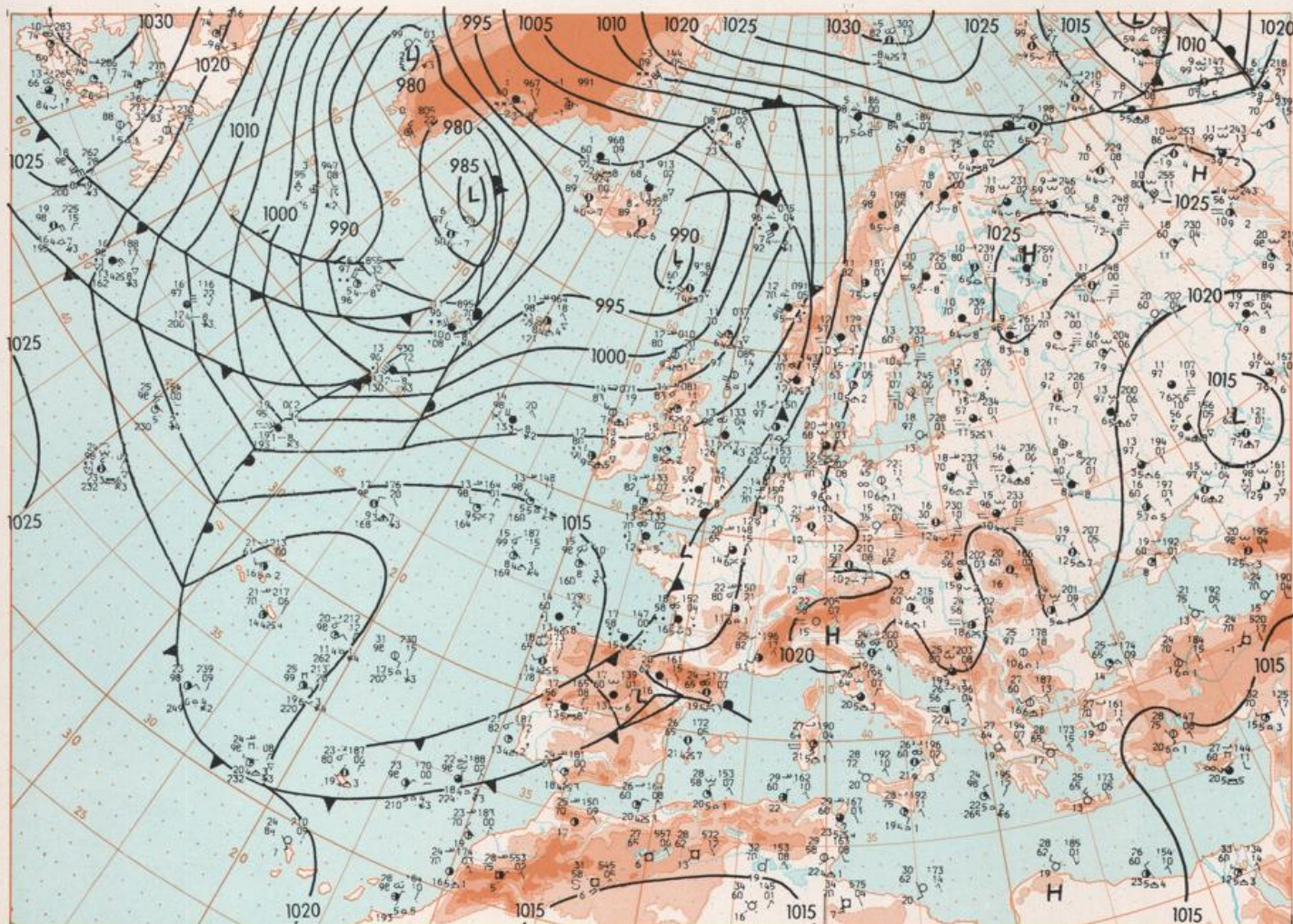
Variación de la presión del suelo 24 h en mbar a las 00 T.M.G.  
Variación de espesor 500/1000 mbar en 24 h 00 T.M.G.

Aerologische Diagramme 00 MGZ

Aerological diagrams 00 GMT

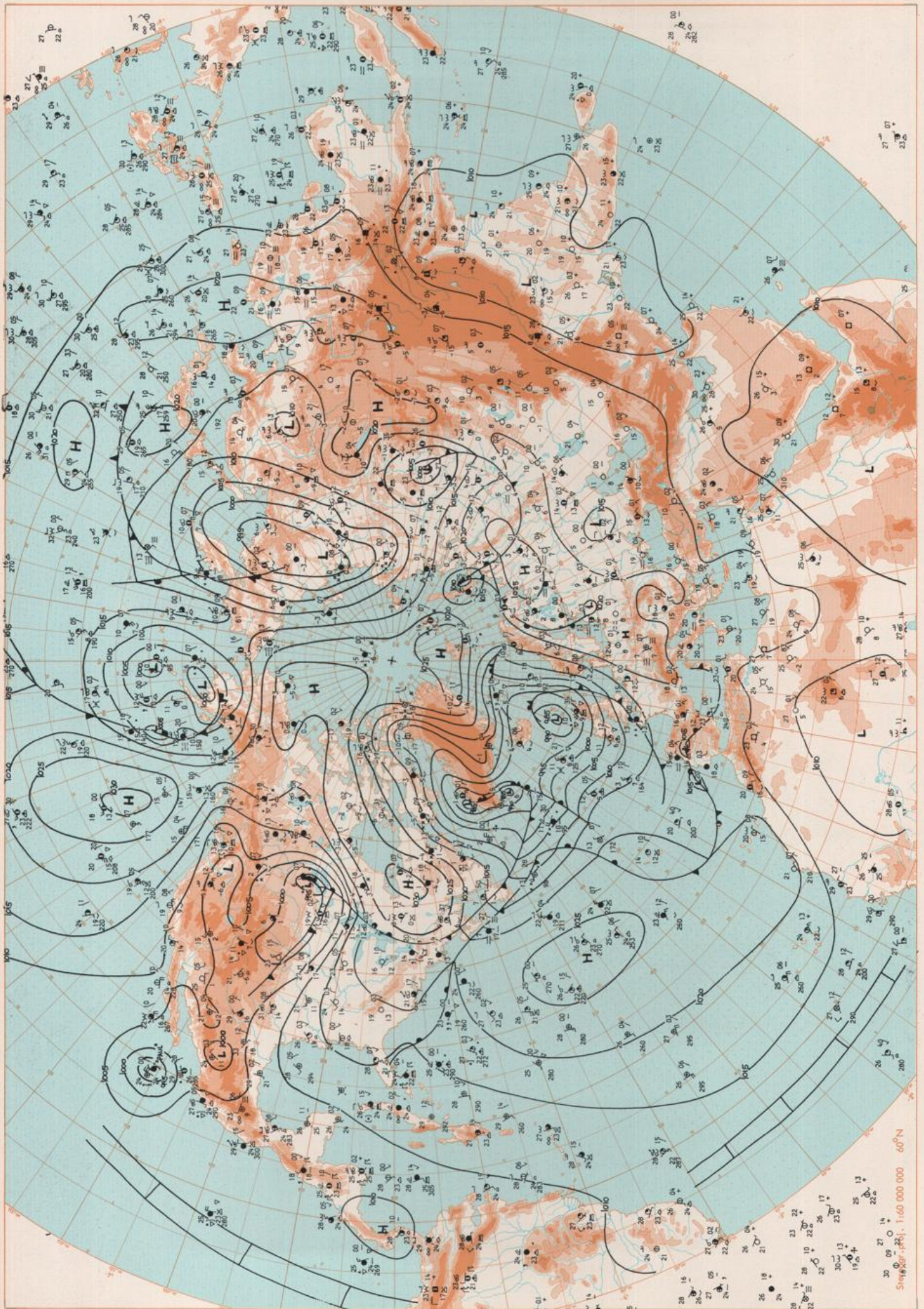
Diagrammes aérologiques 00 TU

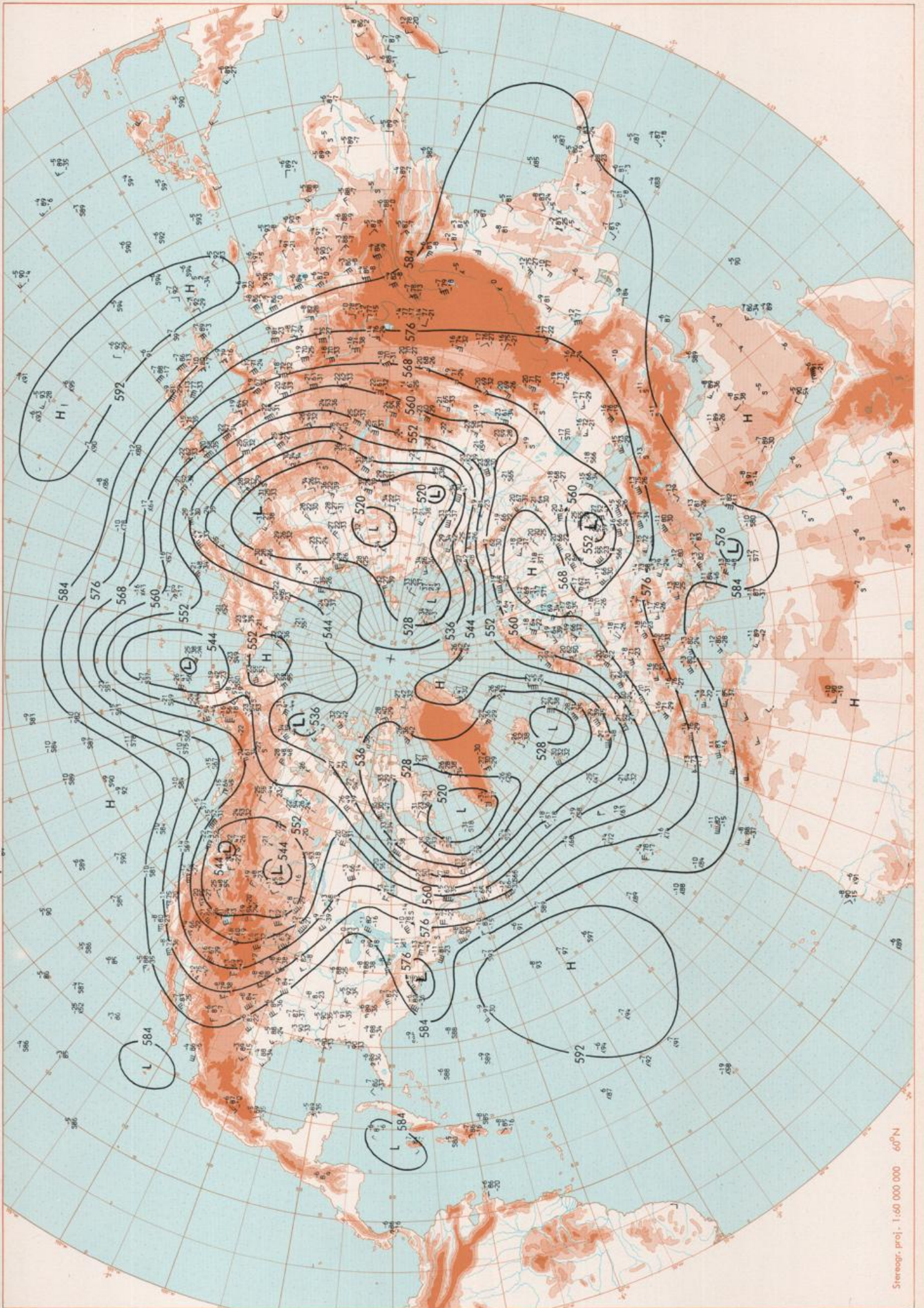
Diagramas aerológicos 00 T.M.G.

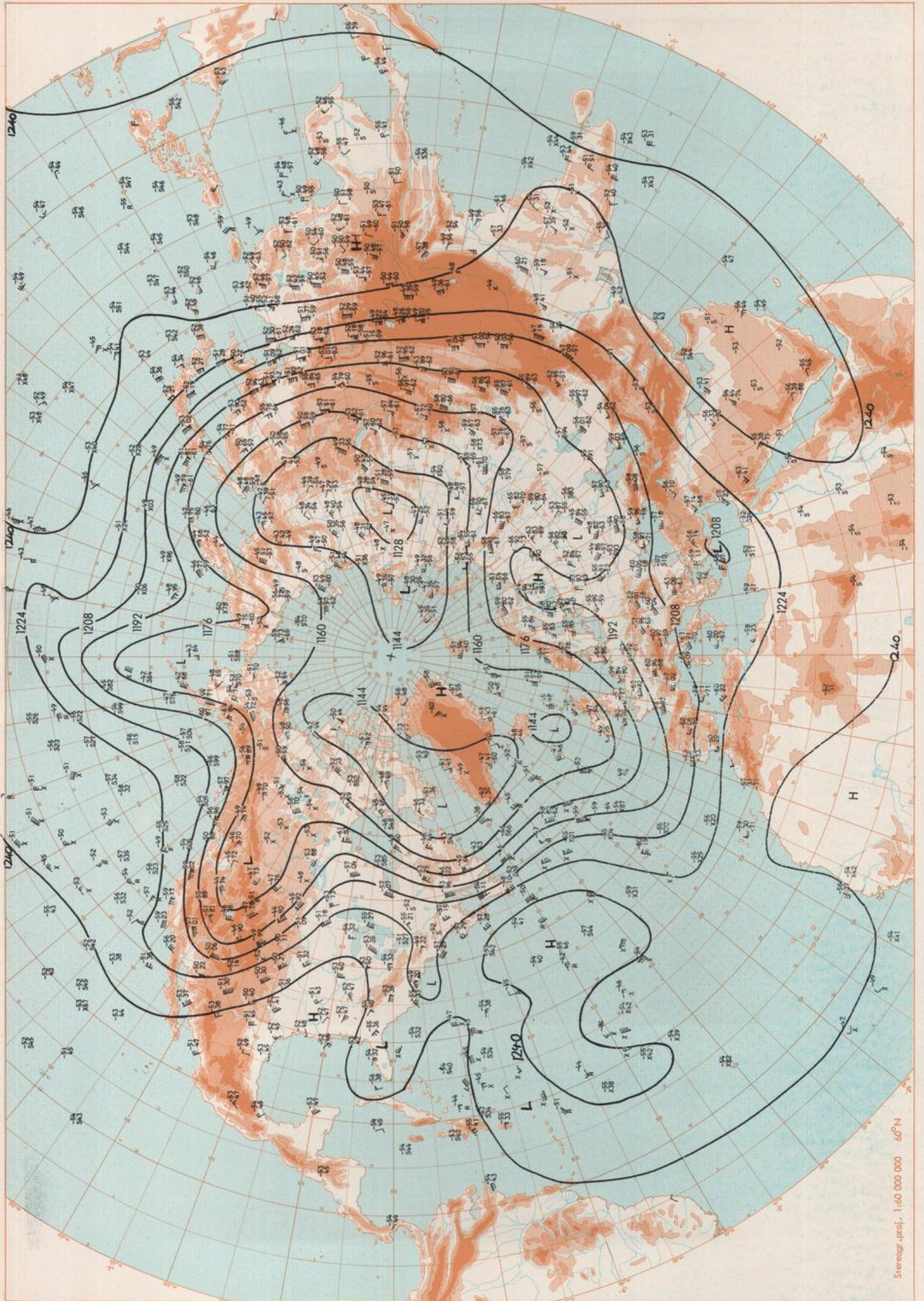


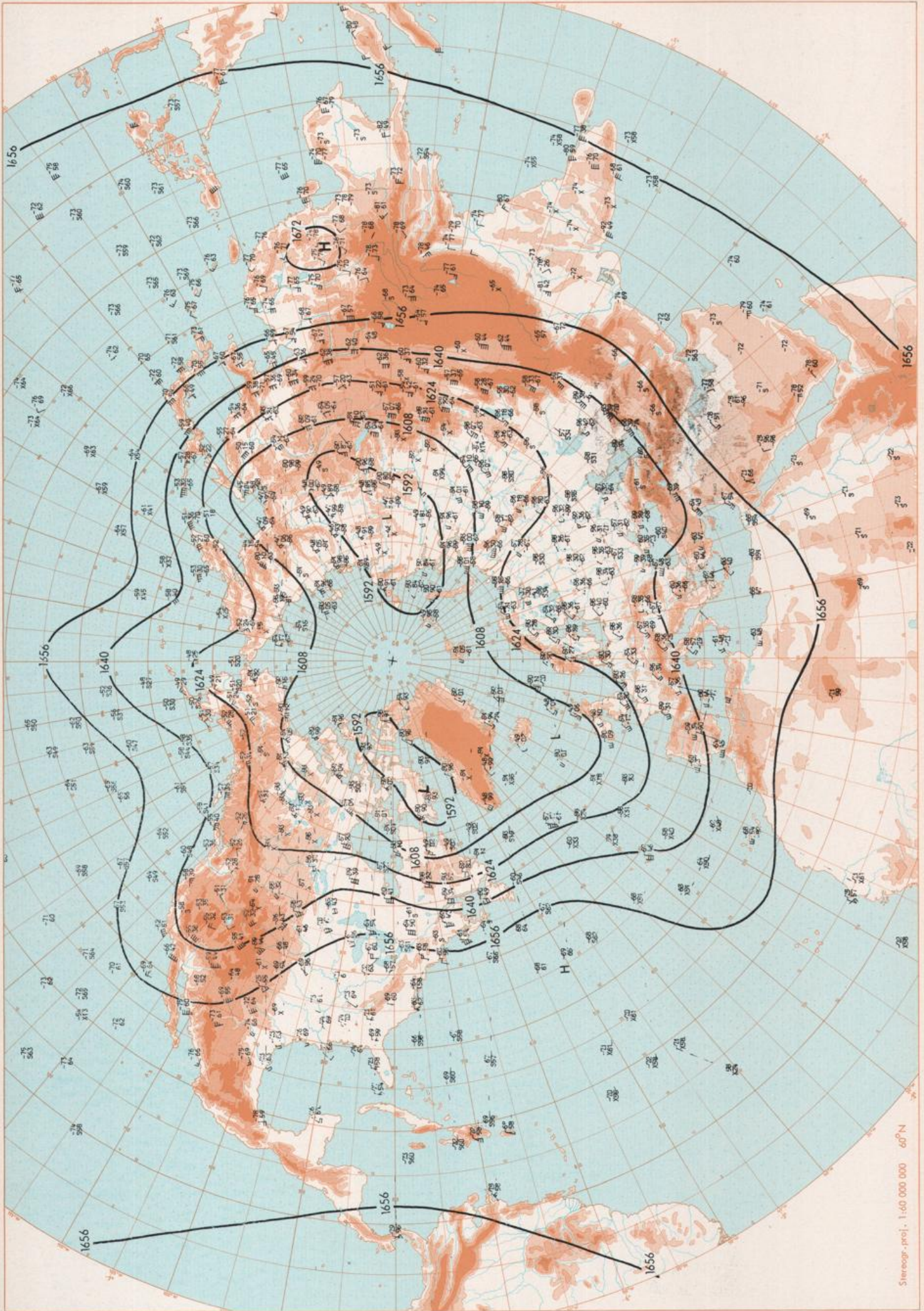
Stereogr.-proj. 1:30 000 000 60°N

Surface chart 12 GMT



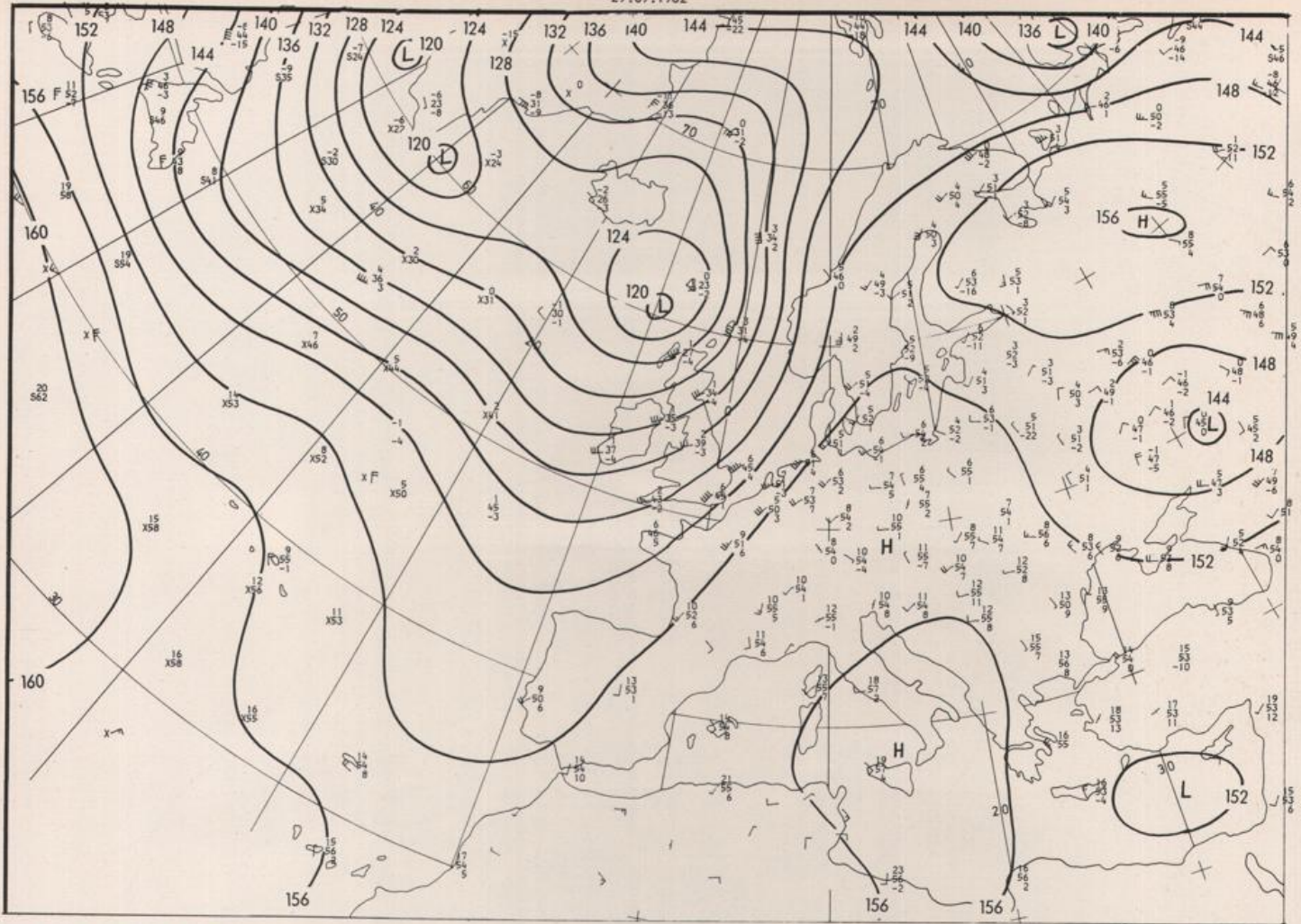






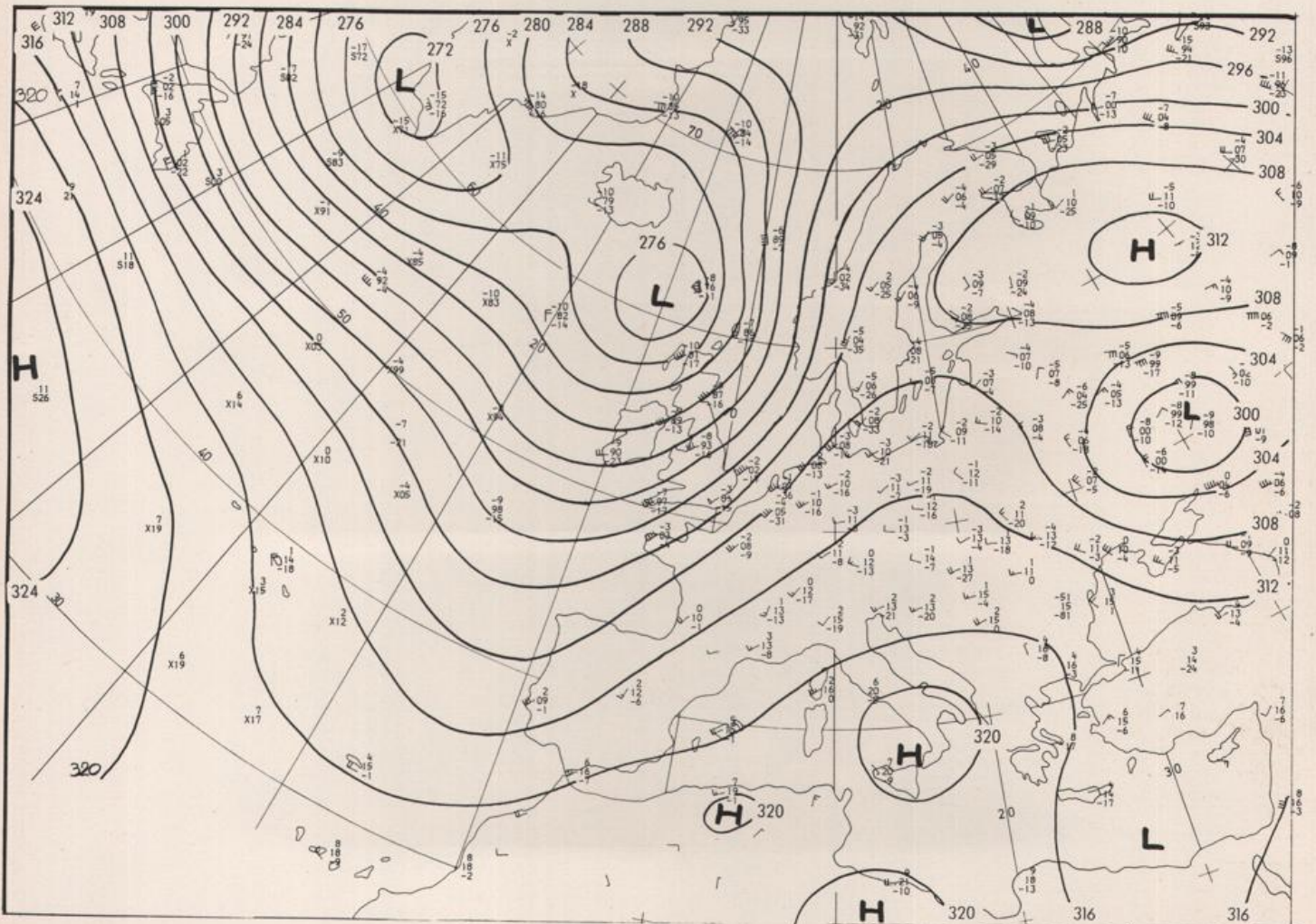
100 mbar OO GMT

Stereogr.-proj. 1:60 000 000 60°N

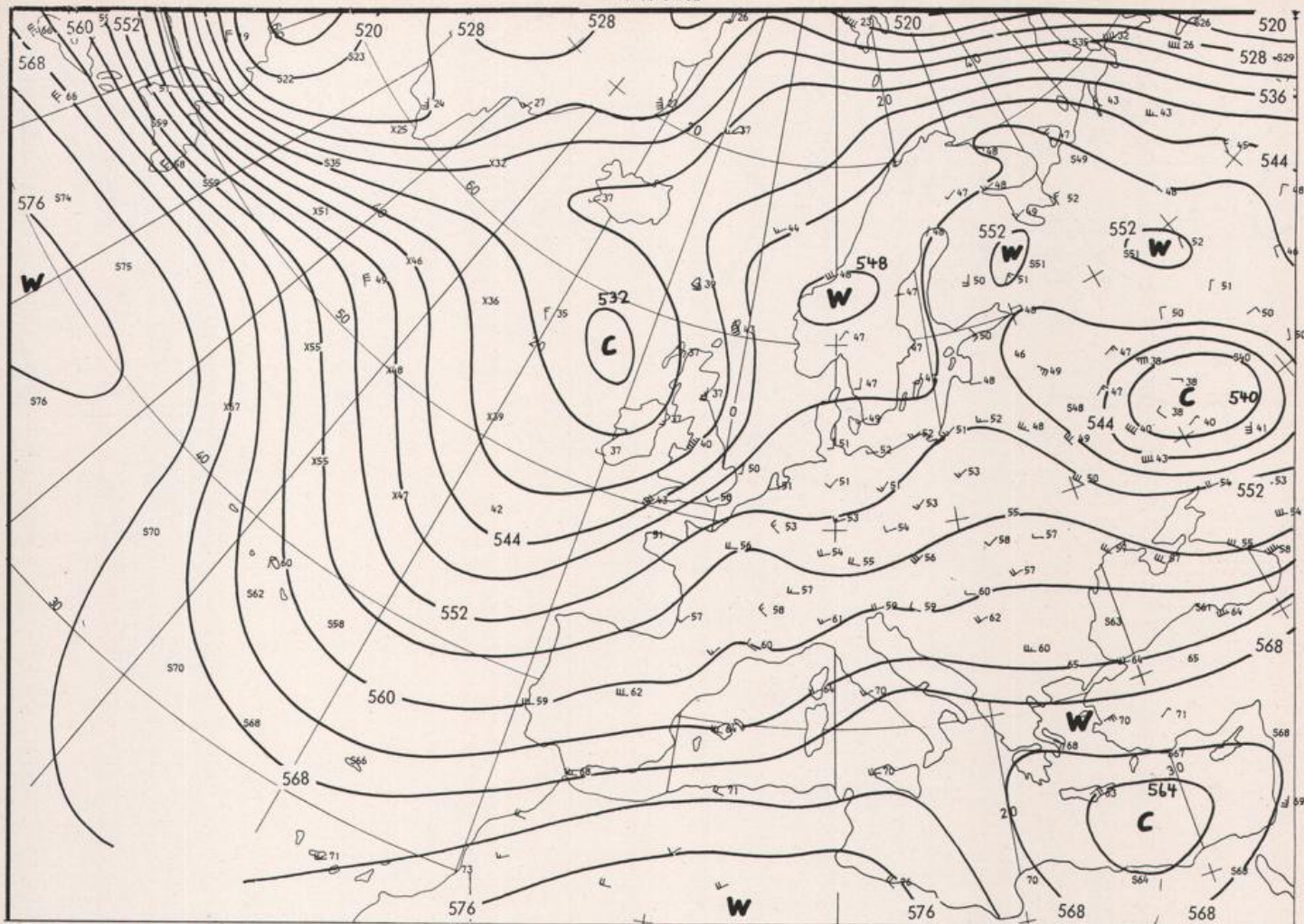


Stereogr. proj. 1:30 000 000 in 60°N

850 mbar OO GMT

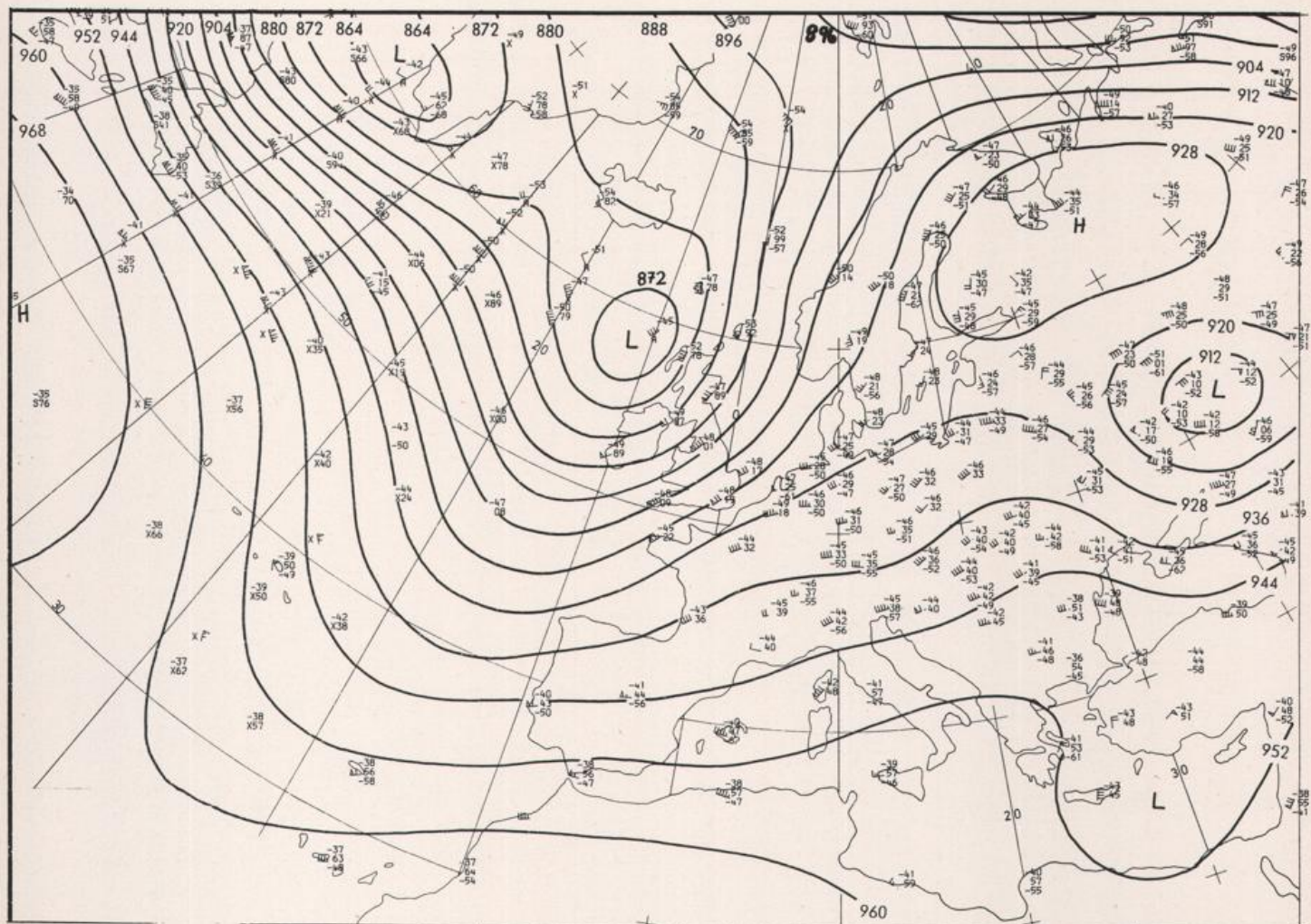


700 mbar OO GMT

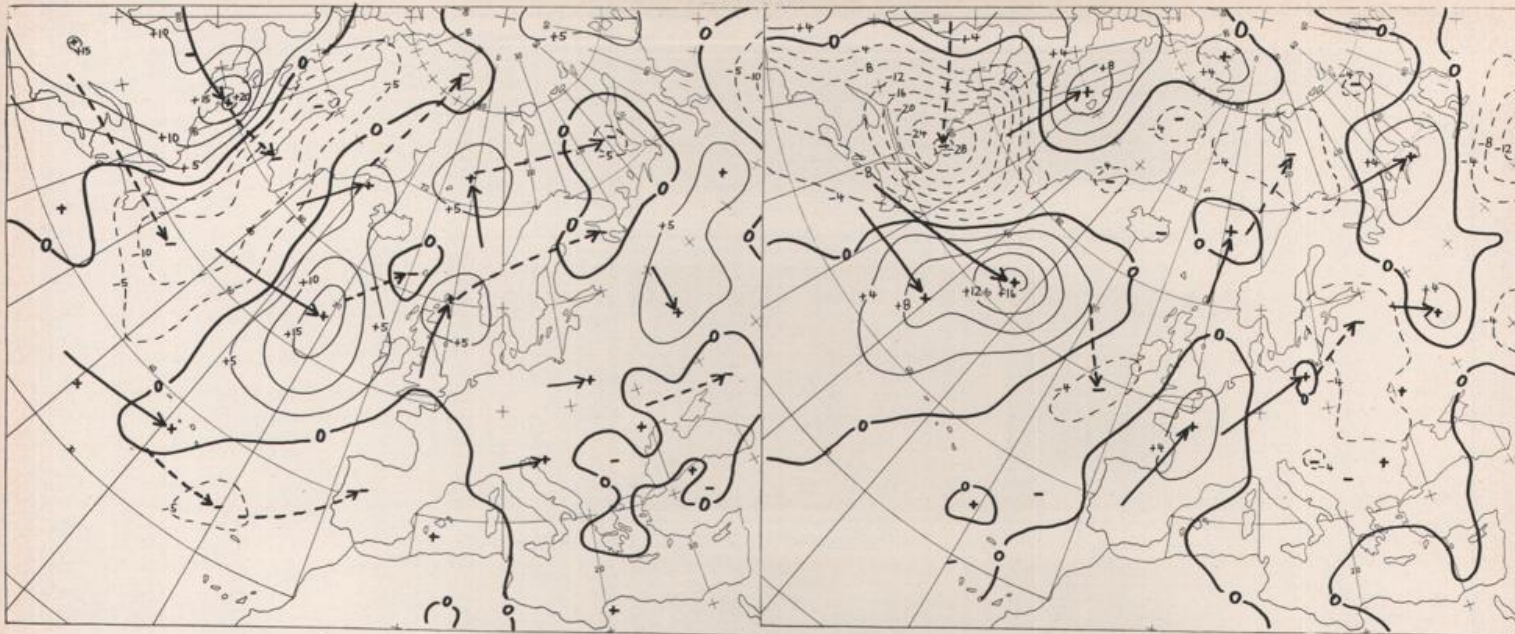


Stereogr. proj. 1:30 000 000 60°N

500/1000 mbar OO GMT



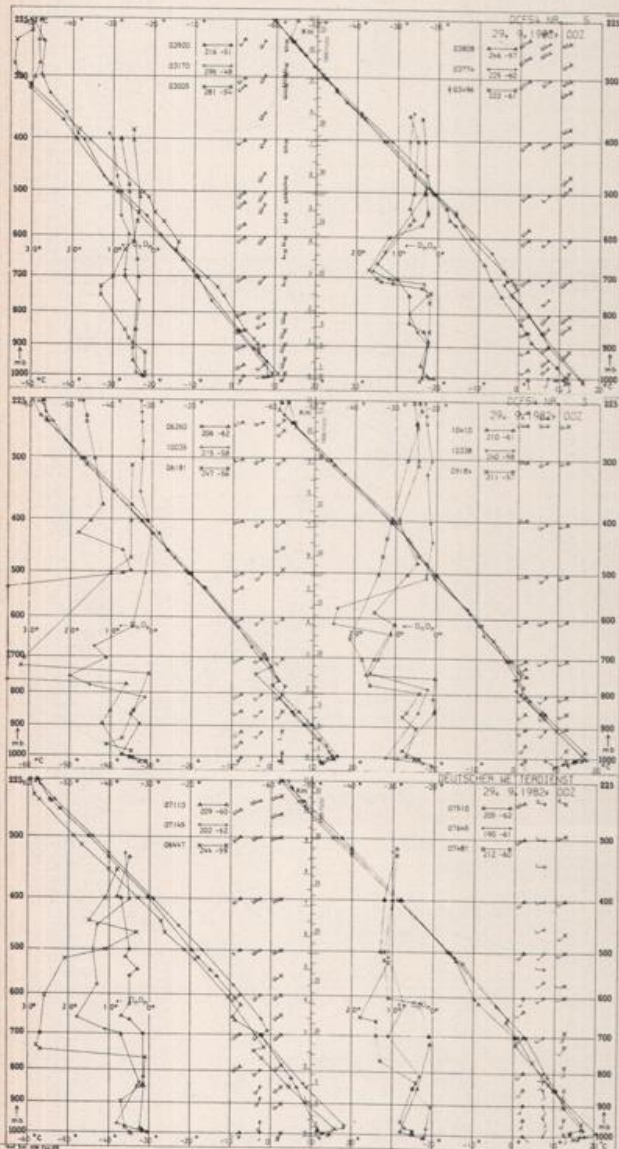
300 mbar OO GMT



Stereogr. proj. 1:60 000 000

24 hr surface pressure change 00 GMT

24 hr thickness change 00 GMT



Aerological Diagrams 00 GMT

- 01241 Orland
- 01384 Oslo
- 01415 Stavanger
- 02465 Stockholm
- 02527 Göteborg
- 03005 Lerwick
- 03170 Shanwell
- 03496 Hemsby
- 03774 Crawley
- 03808 Camborne
- 03920 Long Kesh
- 06181 København
- 06260 De Bilt
- 06447 Uccle
- 06610 Payame
- 07110 Brest
- 07145 Trappes
- 07481 Lyon
- 07510 Bordeaux
- 07645 Nimes
- 09184 Greifswald
- 09393 Lindenberg
- 09548 Meiningen
- 10035 Schleswig
- 10338 Hannover
- 10410 Essen
- 10739 Stuttgart
- 10868 München-Oberschleißheim
- 11035 Wien
- 11520 Praha-Libus
- 12374 Legionowo
- 12843 Budapest
- 13275 Beograd
- 16044 Udine
- 16080 Milano
- 16242 Roma

