

Europäischer Wetterbericht European Meteorological Bulletin Bulletin Météorologique Européen Boletín Meteorológico Europeo

Amtsblatt des Deutschen Wetterdienstes

Druck und Verlag: Deutscher Wetterdienst — Zentralamt — D 6050 Offenbach am Main, Frankfurter Straße 135, Tel.: (0611) 80621

Erscheint täglich
Bezugspreis monatlich 30,00 DM
zuzügl. Porto
Nachdruck nicht gestattet

Issued daily
Monthly price 30,00 DM
plus postage
All rights reserved

Publié quotidiennement
Prix mensuel 30,00 DM
plus port
Reproduction interdite

Se publica diariamente
Precio de suscripción mensual 30,00 DM
plus porte
Se prohíbe la reproducción

Jahrgang
Volume
Volume
Volumen

7

Freitag
Friday
Vendredi
Viernes

9.07.1982

Nummer
Number
Número
Número

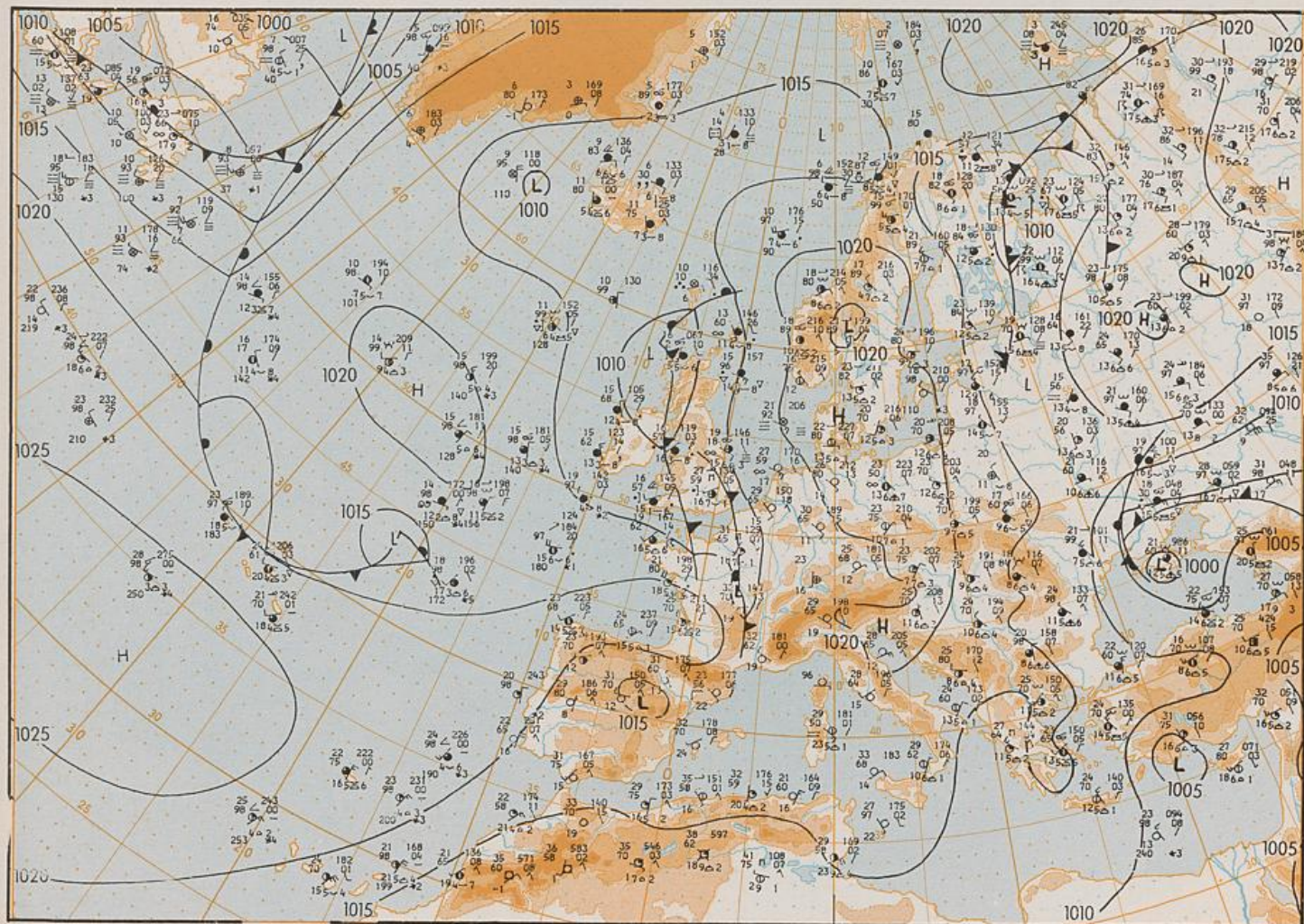
190

Inhalt
Bodenwetterkarte 12 MGZ
Bodenwetterkarte Nordhemisphäre 00 MGZ
500-mbar-Fläche Nordhemisphäre 00 MGZ
200-mbar-Fläche Nordhemisphäre 00 MGZ
100-mbar-Fläche Nordhemisphäre 00 MGZ
850 mbar 00 MGZ, 700 mbar 00 MGZ
Relative Topographie 500/1000 mbar 00 MGZ
300 mbar 00 MGZ
24stg Bodendruckänderung 00 MGZ
24stg Änderung relative Topographie
500/1000 mbar 00 MGZ
Aerologische Diagramme 00 MGZ

Content
Surface chart 12 GMT
Surface chart northern hemisphere 00 GMT
500 mbar surface northern hemisphere 00 GMT
200 mbar surface northern hemisphere 00 GMT
100 mbar surface northern hemisphere 00 GMT
850 mbar 00 GMT, 700 mbar 00 GMT
Thickness chart 500/1000 mbar 00 GMT
300 mbar 00 GMT
24 hr surface pressure change 00 GMT
24 hr thickness change
500/1000 mbar 00 GMT
Aerological diagrams 00 GMT

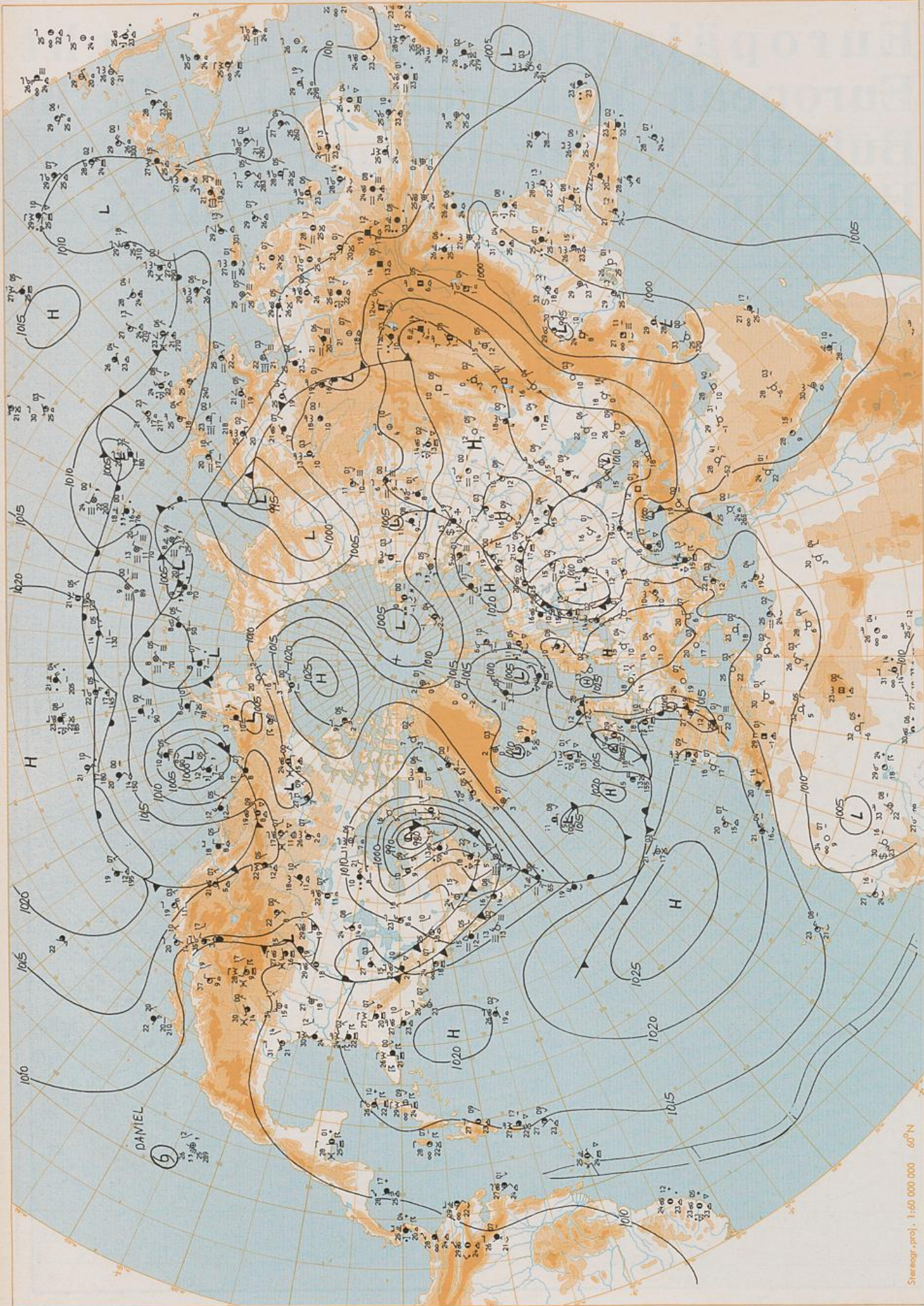
Contenu
Carte de surface à 12 TU
Carte de surface sur l'hémisphère nord à 00 TU
Surface 500 mbar sur l'hémisphère nord à 00 TU
Surface 200 mbar sur l'hémisphère nord à 00 TU
Surface 100 mbar sur l'hémisphère nord à 00 TU
850 mbar 00 TU, 700 mbar 00 TU
Carte d'épaisseur 500/1000 mbar 00 TU
300 mbar 00 TU
Variations de pression en 24 h (niveau mer)
en mbar à 00 TU
Variations d'épaisseur 500/1000 mbar
en 24 h 00 TU
Diagrammes aérologiques 00 TU

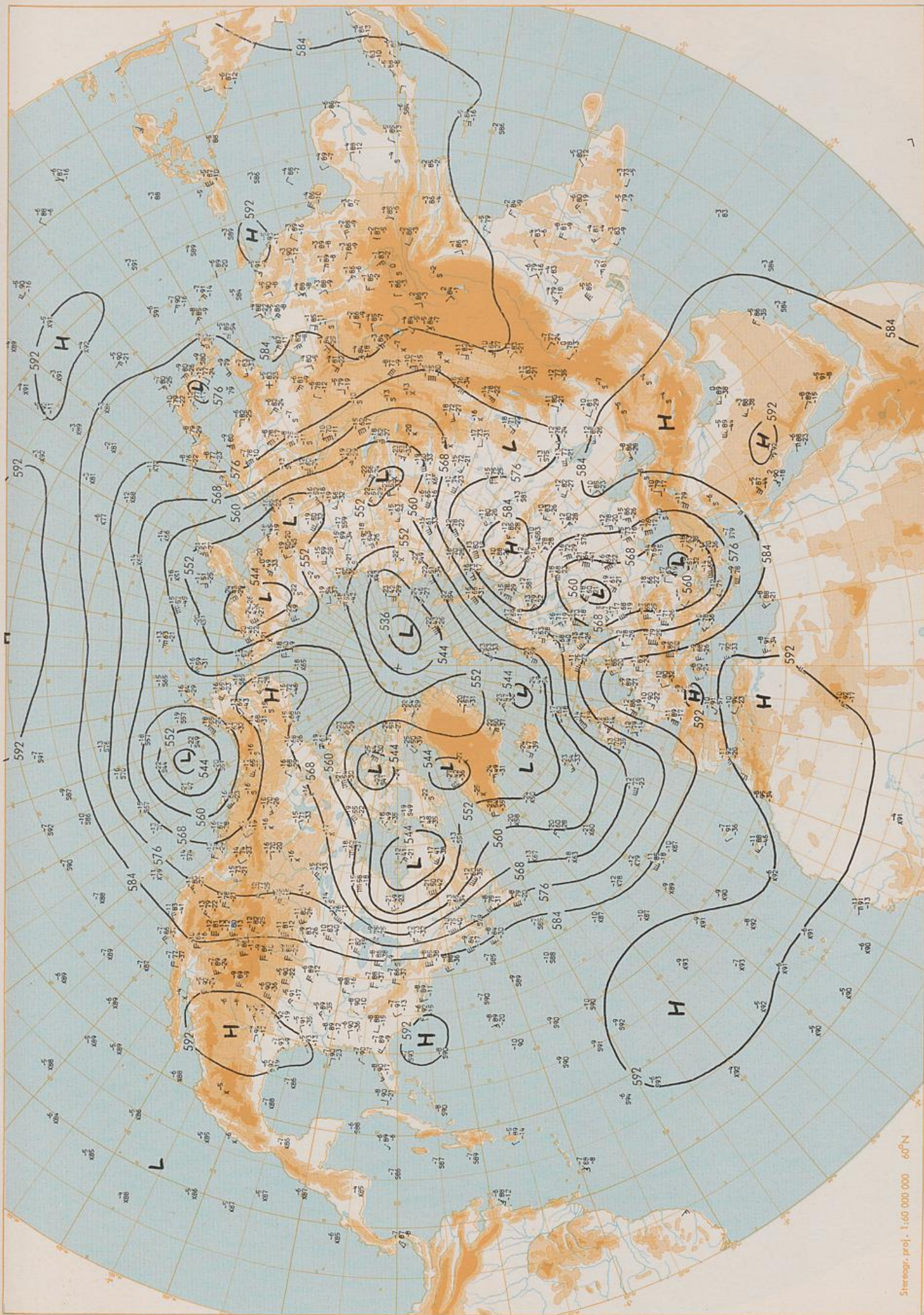
Contenido
Análisis en superficie a las 12 T.M.G.
Análisis en superficie hemisferio norte a las 00 T.M.G.
Topografía de la superficie de 500 mbar hemisferio
norte a las 00 T.M.G.
Topografía de la superficie de 200 mbar hemisferio
norte a las 00 T.M.G.
Topografía de la superficie de 100 mbar hemisferio
norte a las 00 T.M.G.
850 mbar 00 T.M.G., 700 mbar 00 T.M.G.
Relativo 500/1000 mbar 00 T.M.G.
300 mbar 00 T.M.G.
Variación de la presión del suelo 24 h en mbar
a las 00 T.M.G.
Variación de espesor 500/1000 mbar
en 24 h 00 T.M.G.
Diagramas aerológicos 00 T.M.G.



Stereogr. proj. 1:30 000 000 60°N

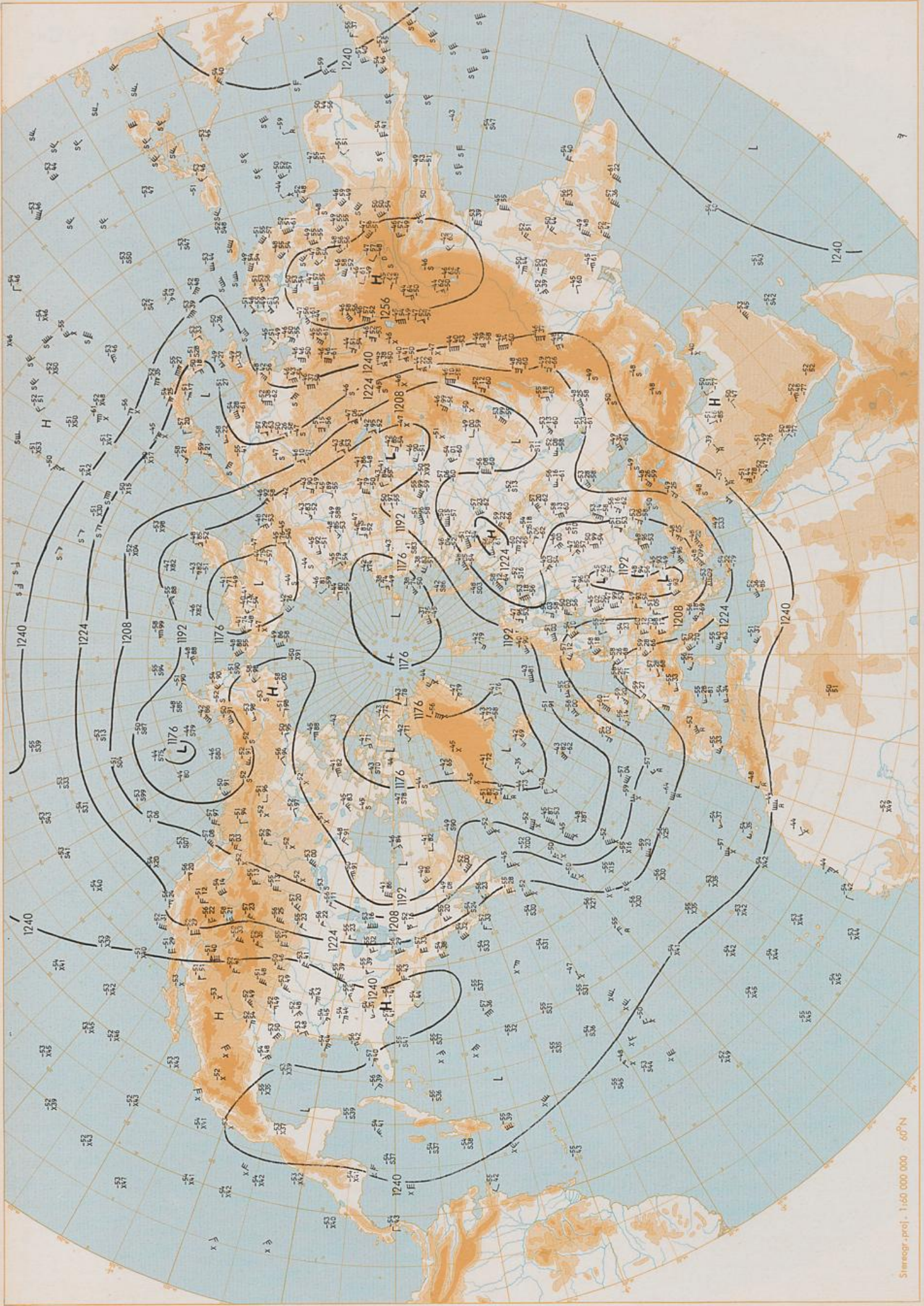
Surface chart 12 GMT

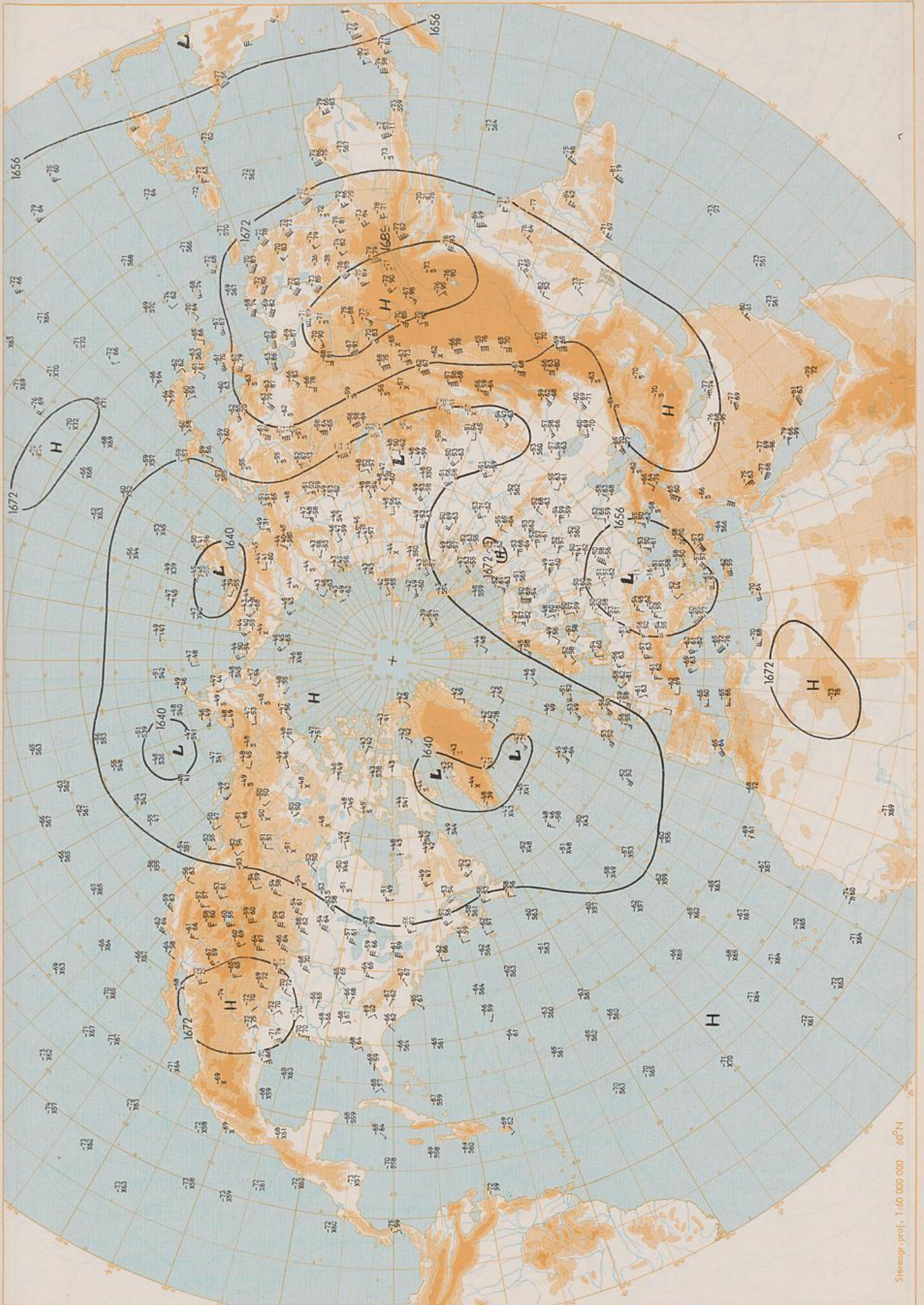




500 mbar OO GMT

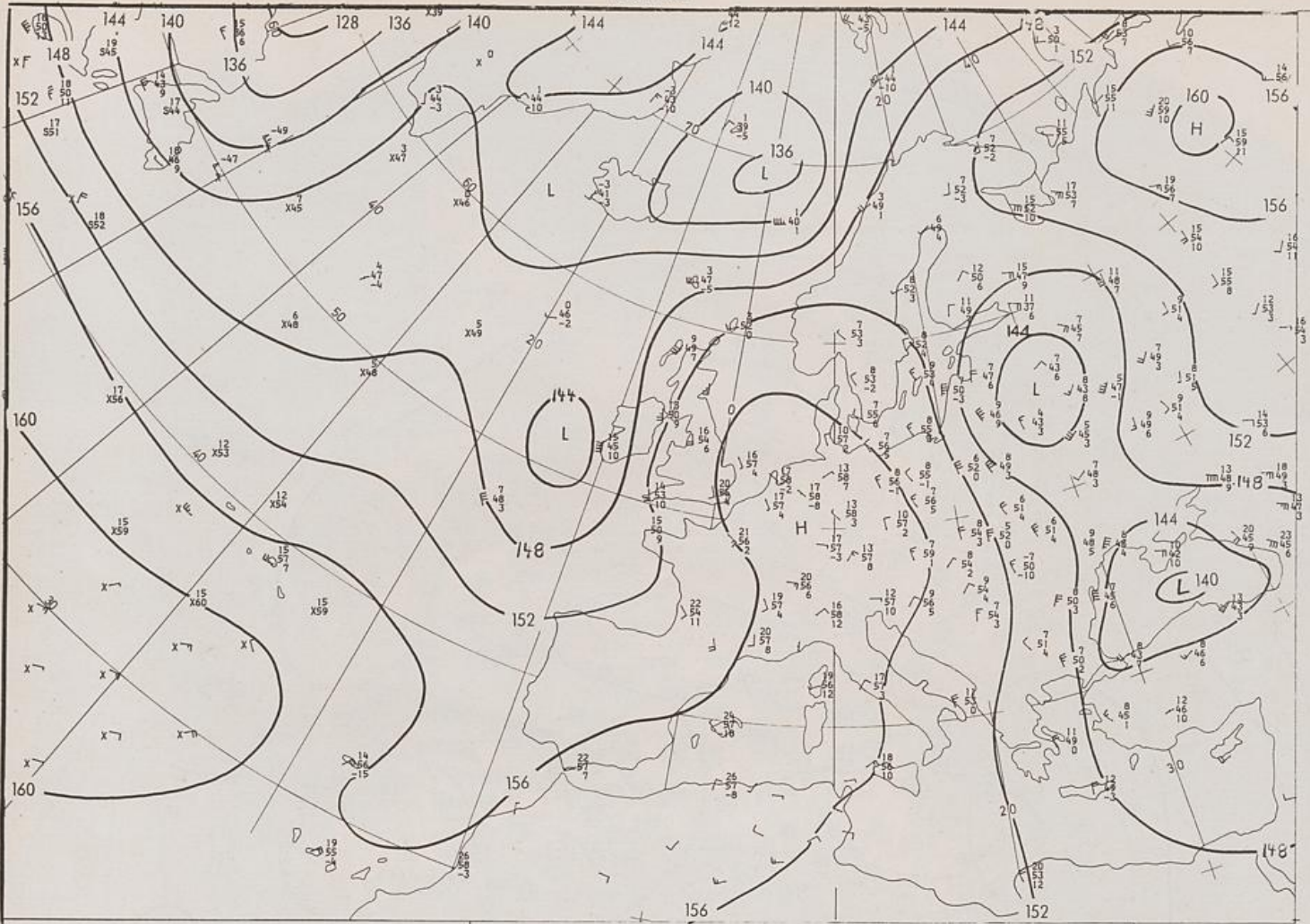
Stereogr. proj. 1:60 000 000 60°N





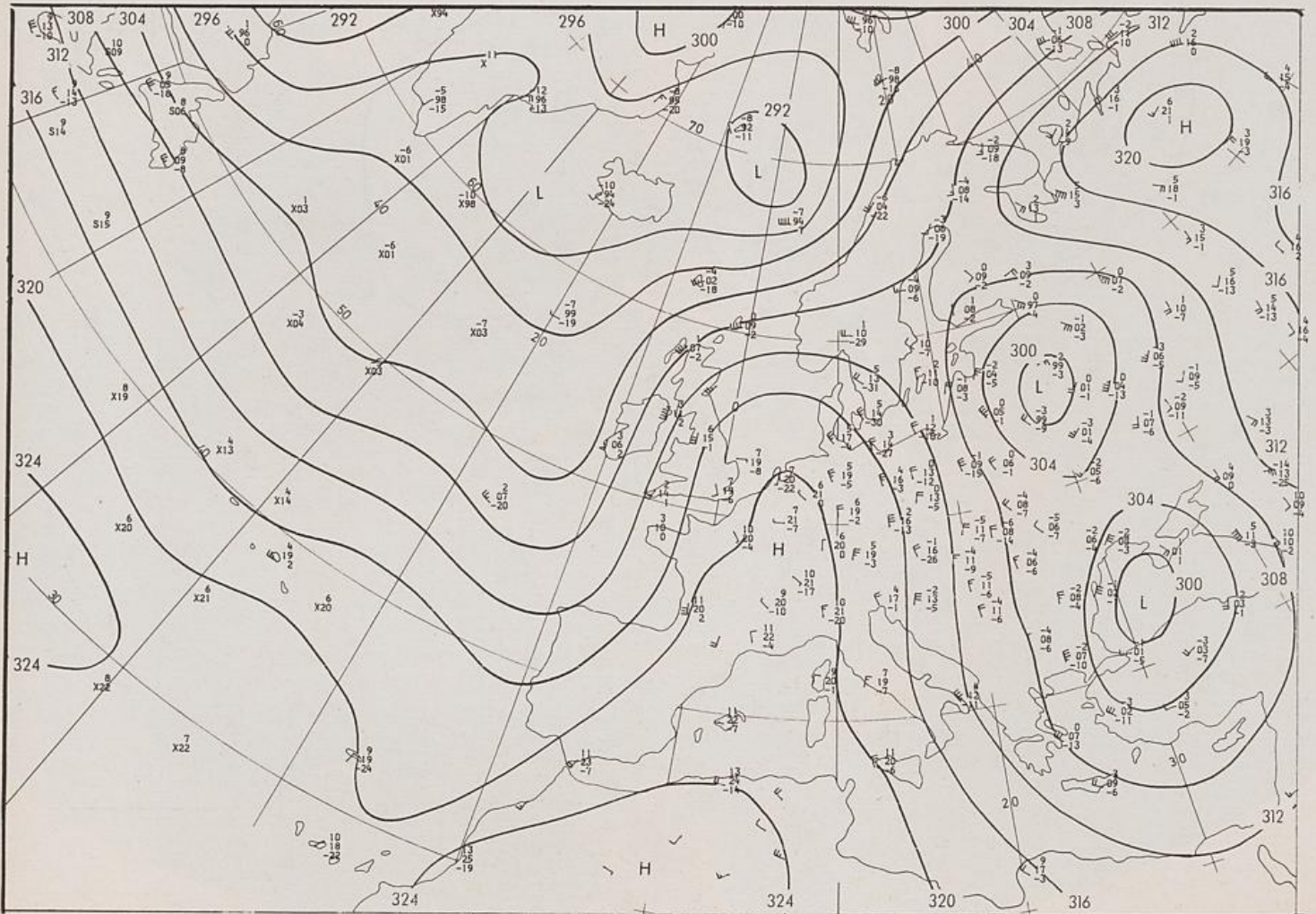
100 mbar OO GMT

9.07.1982

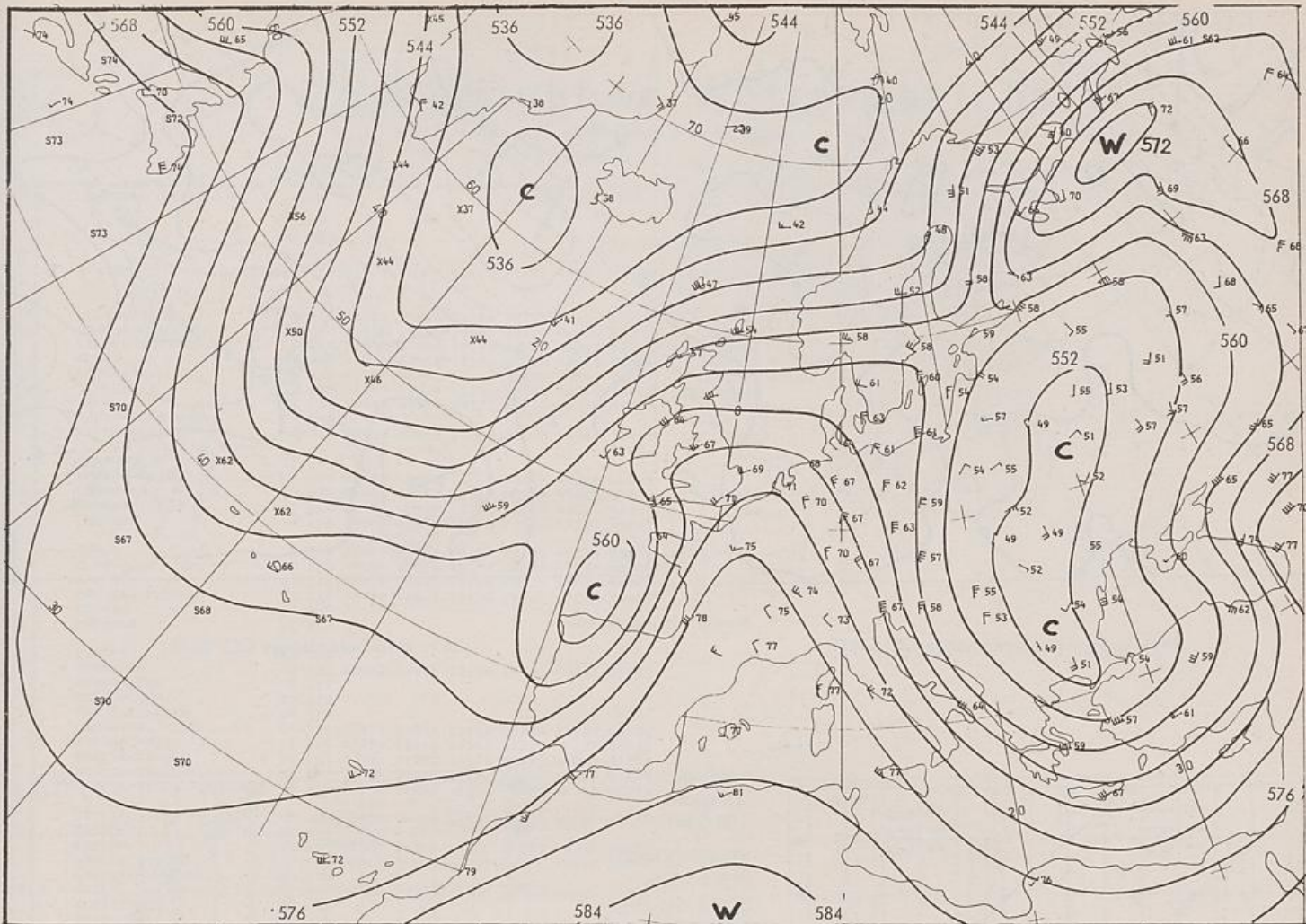


Stereogr. proj. 1:30 000 000 in 60°N

850 mbar 00 GMT

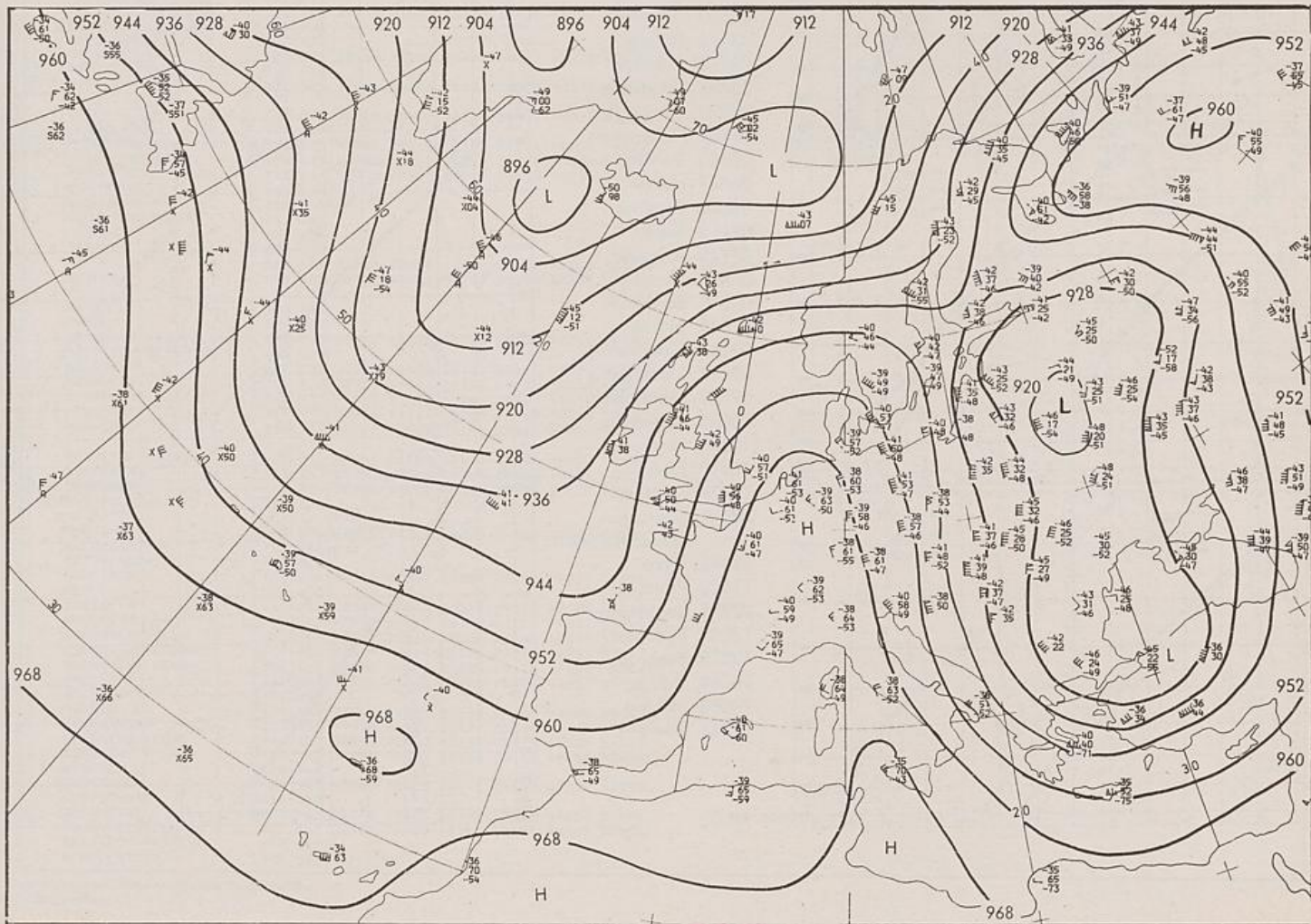


700 mbar 00 GMT



Stereogr. proj. 1:30 000 000 60°N

500/1000 mbar OO GMT



300 mbar OO GMT

