

# Europäischer Wetterbericht European Meteorological Bulletin Bulletin Météorologique Européen Boletín Meteorológico Europeo

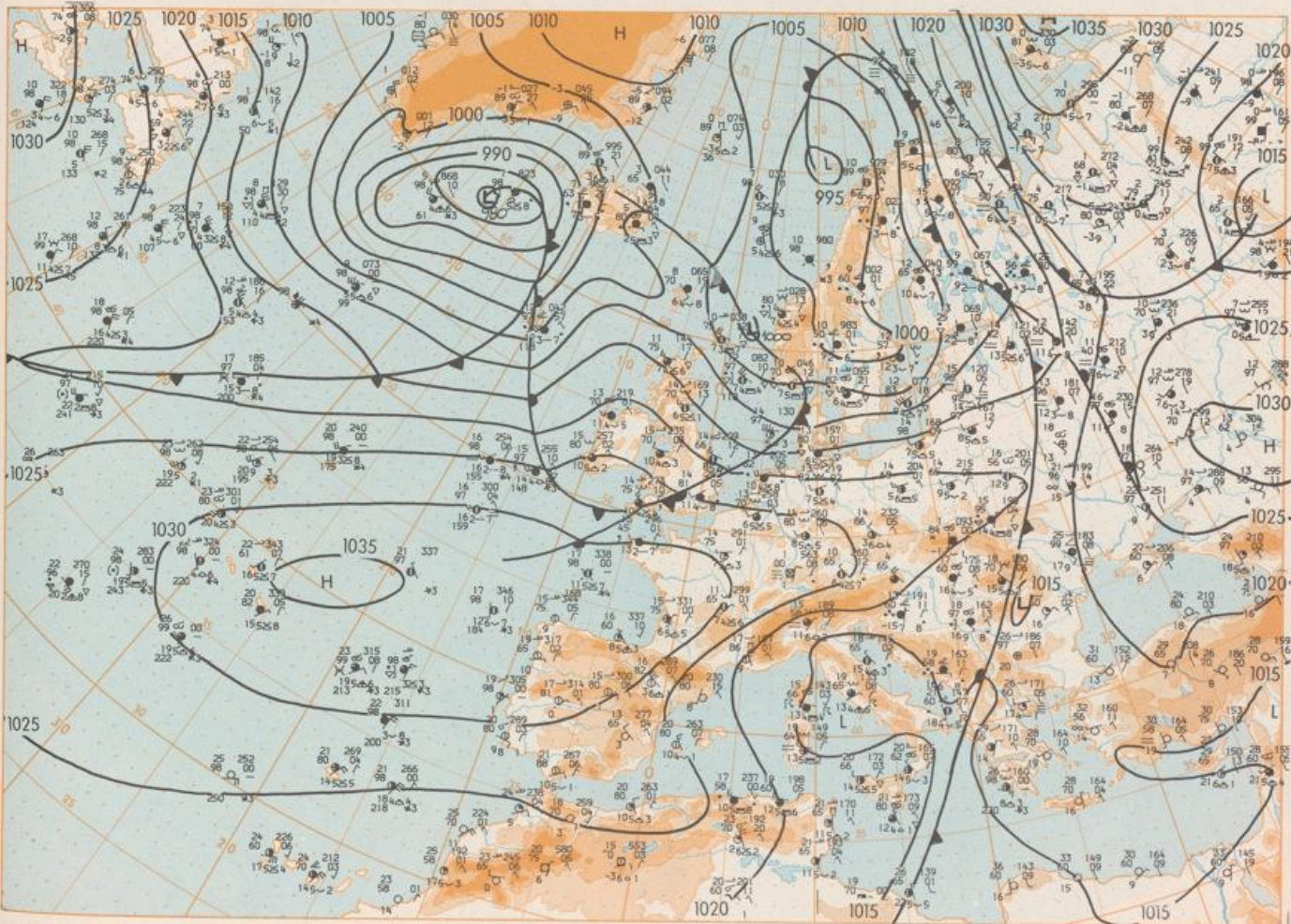
Amtsblatt des Deutschen Wetterdienstes

Druck und Verlag: Deutscher Wetterdienst — Zentralamt — D 6050 Offenbach am Main, Frankfurter Straße 135, Tel.: (06 9) 806 20

|   |   |  |   |
|---|---|--|---|
| Er erscheint täglich<br>Bezugpreis monatlich 30,00 DM<br>zusügl. Porto<br>Nachdruck nicht gestattet | Issued daily<br>Monthly price 30,00 DM<br>plus postage<br>All rights reserved | Publié quotidiennement<br>Prix mensuel 30,00 DM<br>plus port<br>Reproduction interdite | Se publica diariamente<br>Precio de suscripción mensual: 30,00 DM<br>plus porte<br>Se prohíbe la reproducción |
|---|---|--|---|

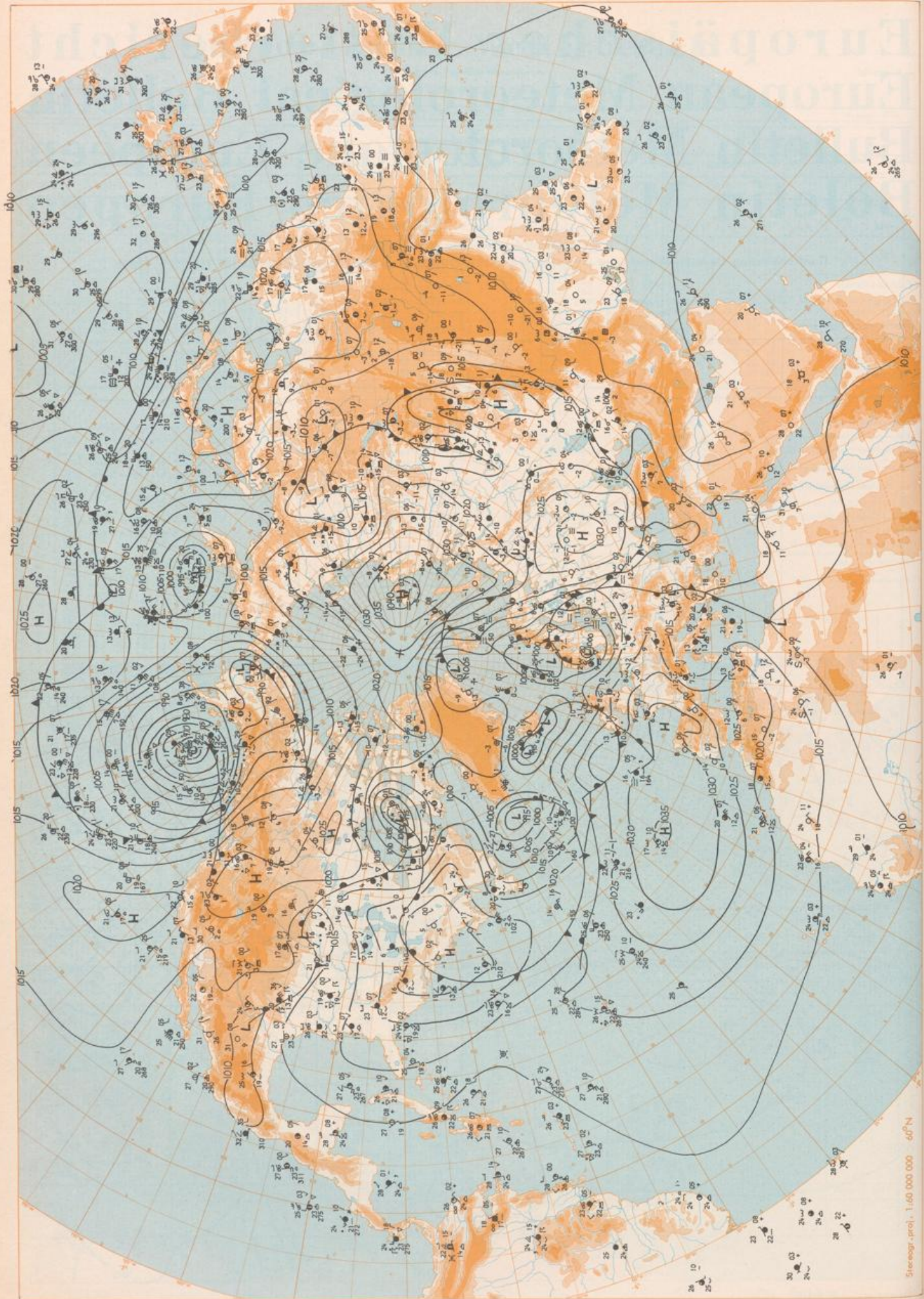
|   |   |  |           |                                      |     |
|---|---|--|-----------|--------------------------------------|-----|
| Jahrgang<br>Volume<br>Volume<br>Volumen | 9 | Sonntag<br>Sunday<br>Dimanche<br>Domingo | 7.10.1984 | Nummer<br>Number<br>Numéro<br>Número | 281 |
|---|---|--|-----------|--------------------------------------|-----|

| Inhalt  | Content                                    | Contenu  | Contenido   |
|---|--|--|---|
| Balkenwetterkarte 12 MGZ                                | Surface chart 12 GMT                       | Carte de surface à 12 TU                                   | Anticiclón en superficie a las 12 T.M.G.                                |
| Balkenwetterkarte Nordhemisphäre 00 MGZ                 | Surface chart northern hemisphere 00 GMT   | Carte de surface sur l'hémisphère nord à 00 TU             | Anticiclón en superficie hemisferio norte a las 00 T.M.G.               |
| 500 hPa-Fläche Nordhemisphäre 00 MGZ                    | 500 hPa surface northern hemisphere 00 GMT | Surface 500 hPa sur l'hémisphère nord à 00 TU              | Topografía de la superficie de 500 hPa hemisferio norte a las 00 T.M.G. |
| 200 hPa-Fläche Nordhemisphäre 00 MGZ                    | 200 hPa surface northern hemisphere 00 GMT | Surface 200 hPa sur l'hémisphère nord à 00 TU              | Topografía de la superficie de 200 hPa hemisferio norte a las 00 T.M.G. |
| 100 hPa-Fläche Nordhemisphäre 00 MGZ                    | 100 hPa surface northern hemisphere 00 GMT | Surface 100 hPa sur l'hémisphère nord à 00 TU              | Topografía de la superficie de 100 hPa hemisferio norte a las 00 T.M.G. |
| 850 hPa 00 MGZ, 700 hPa 00 MGZ                          | 850 hPa 00 GMT, 700 hPa 00 GMT             | 850 hPa 00 TU, 700 hPa 00 TU                               | 850 hPa 00 T.M.G., 700 hPa 00 T.M.G.                                    |
| Relative Topographie 500/1000 hPa 00 MGZ                | Thickness chart 500/1000 hPa 00 GMT        | Carte d'épaisseur 500/1000 hPa 00 TU                       | Relativo 500/1000 hPa 00 T.M.G.   |
| 300 hPa 00 MGZ  | 300 hPa 00 GMT                             | 300 hPa 00 TU  | 300 hPa 00 T.M.G.   |
| 24hig Bodenwetteränderung 00 MGZ                        | 24 h surface pressure change 00 GMT        | Variations de pression en 24 h (niveau mer) en hPa à 00 TU | Variación de la presión del suelo 24 h en hPa a las 00 T.M.G.           |
| 24hig Änderung relative Topographie 500/1000 hPa 00 MGZ | 24 h thickness change 500/1000 hPa 00 GMT  | Variations d'épaisseur 500/1000 hPa en 24 h 00 TU          | Variación de espesor 500/1000 hPa en 24 h 00 T.M.G.                     |
| Aerologische Diagramme 00 MGZ                           | Aerological diagrams 00 GMT                | Diagrammes aérologiques 00 TU                              | Diagramas aerológicos 00 T.M.G.   |



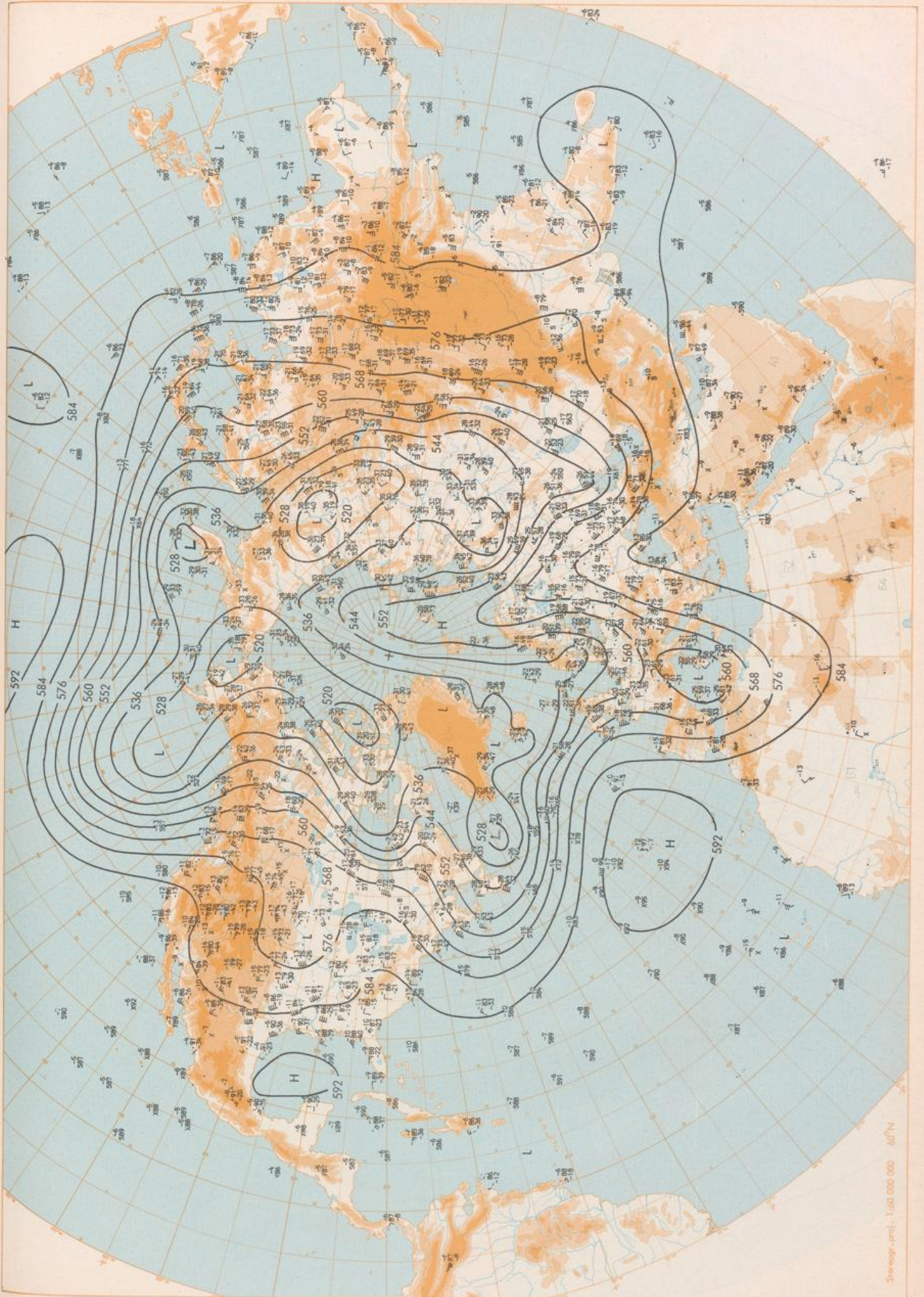
Stereogr. proj. 1:30 000 000 60°N

Surface chart 12 GMT

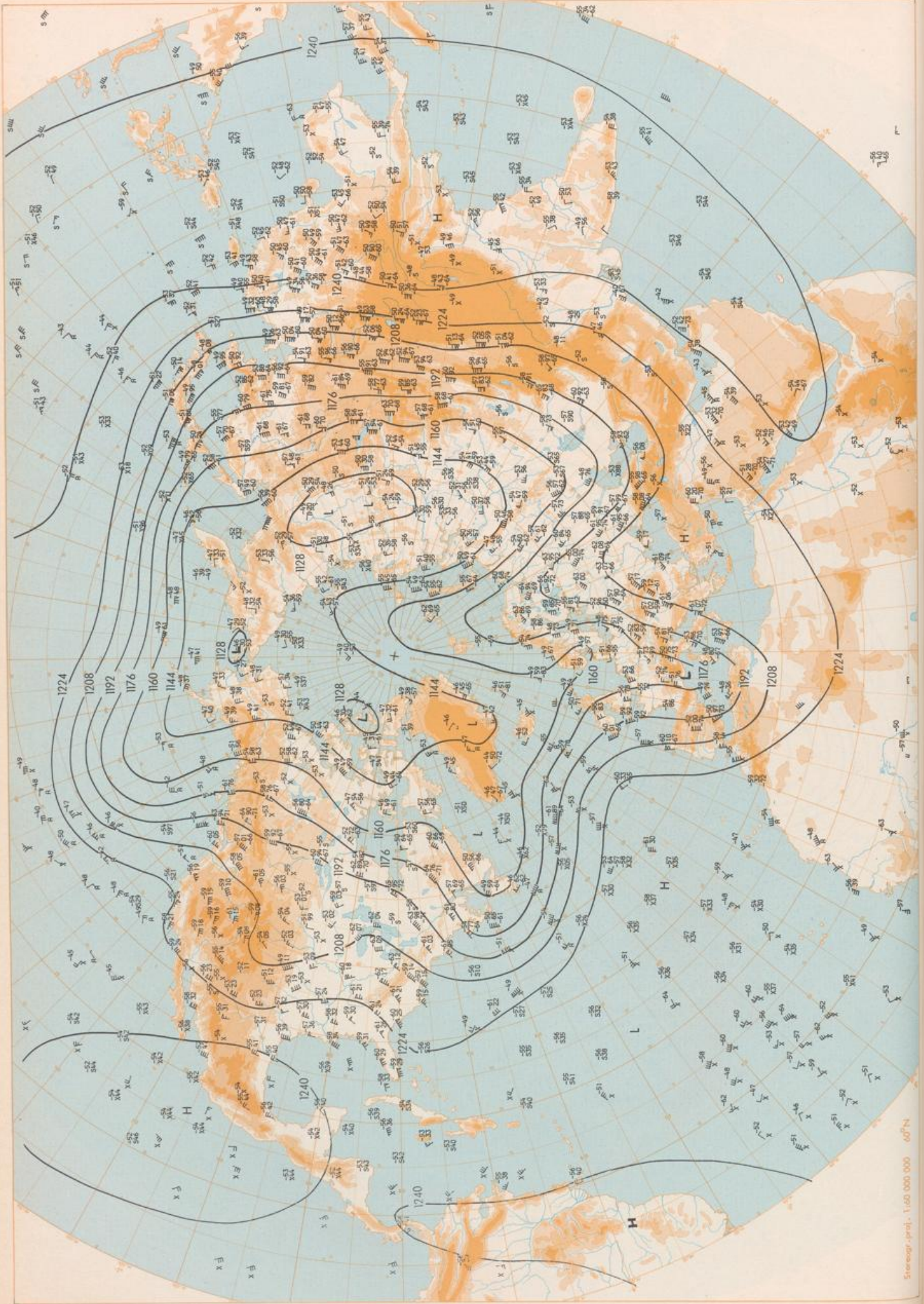


Surface chart 00 GMT

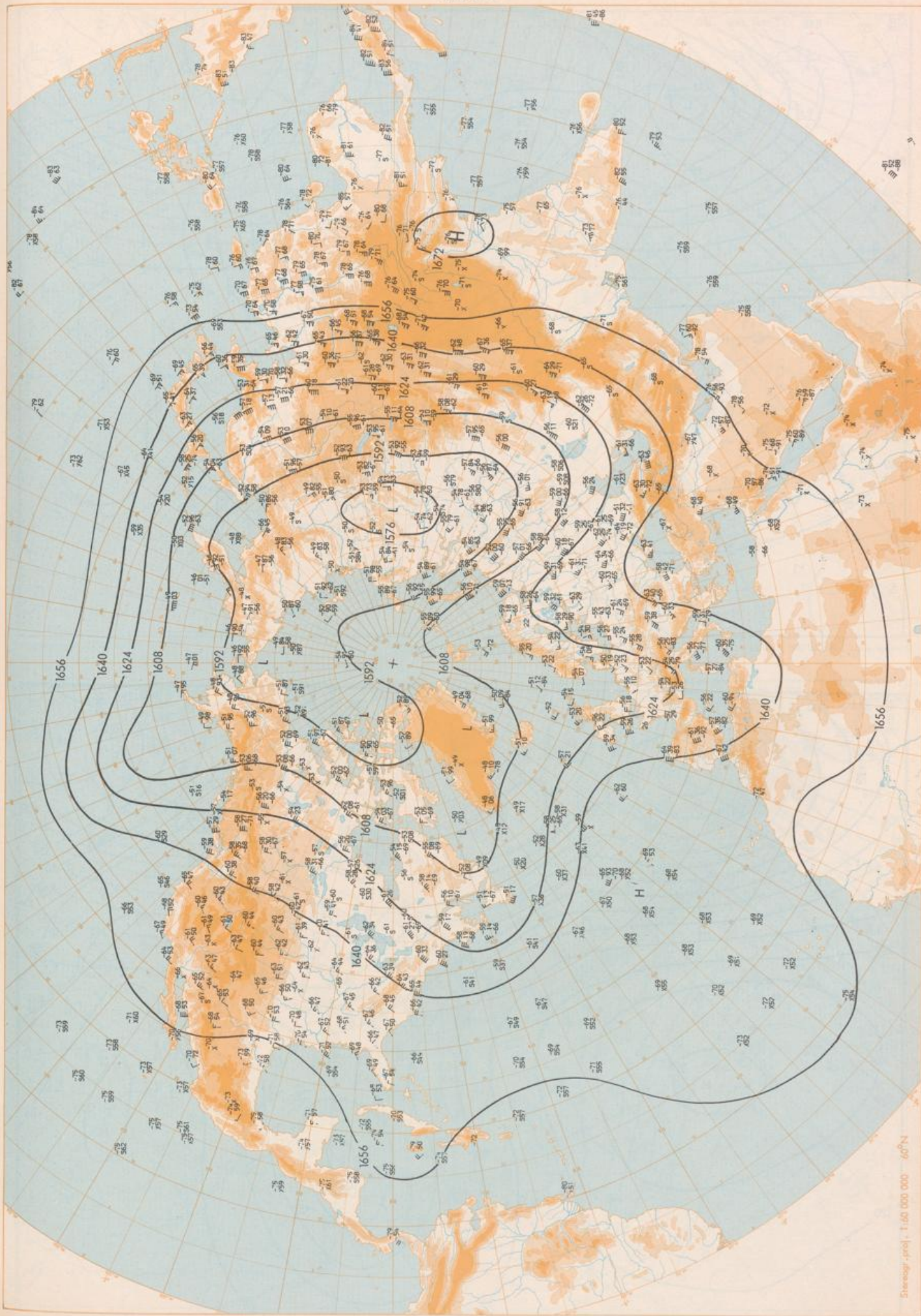
Stereogr. proj. 1:60 000 000 40°N



500 hPa 00 GMT



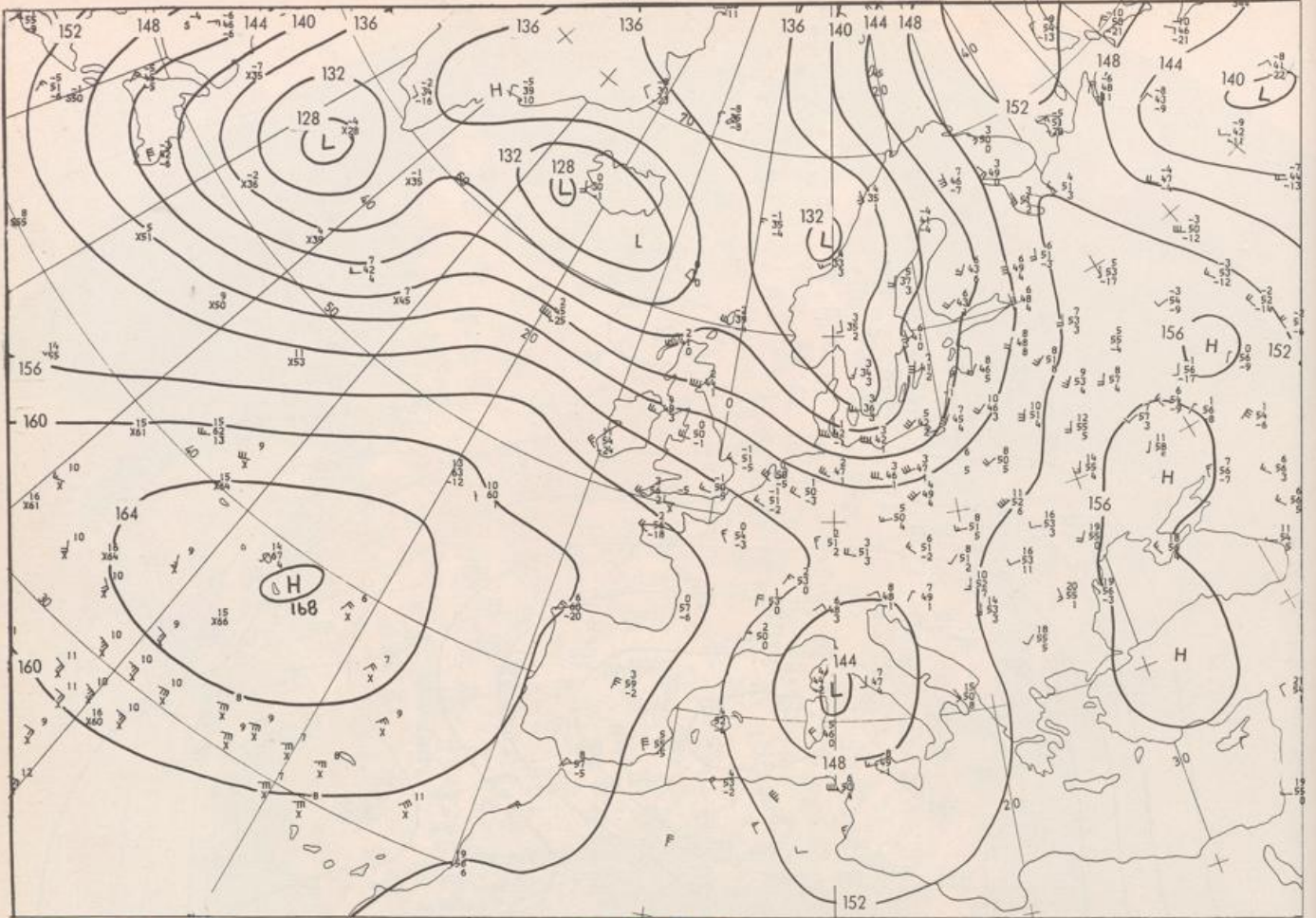
200 hPa 00 GMT



Vertical text on the left edge of the page.

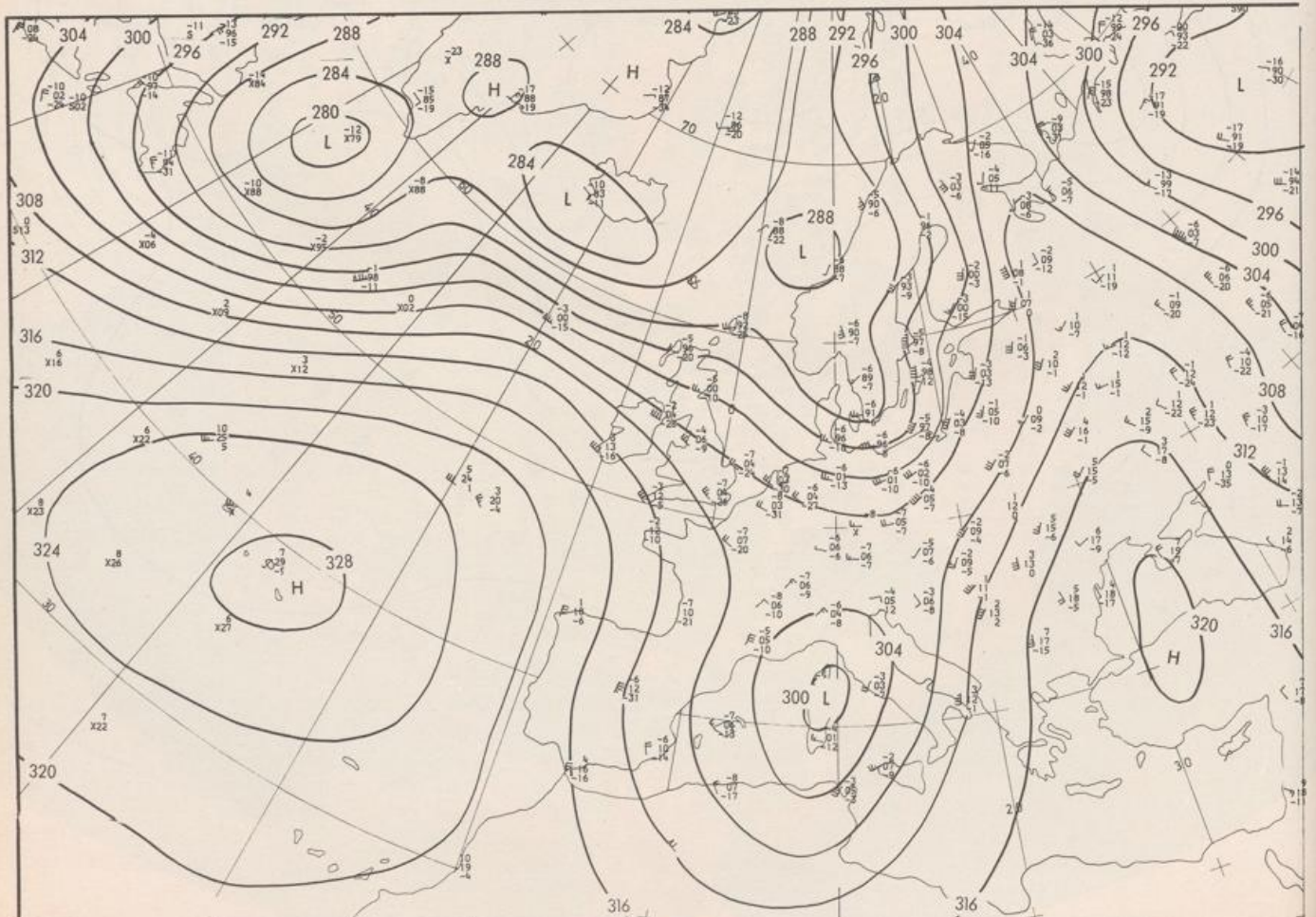
Vertical text on the right edge of the page.

7.10.1984

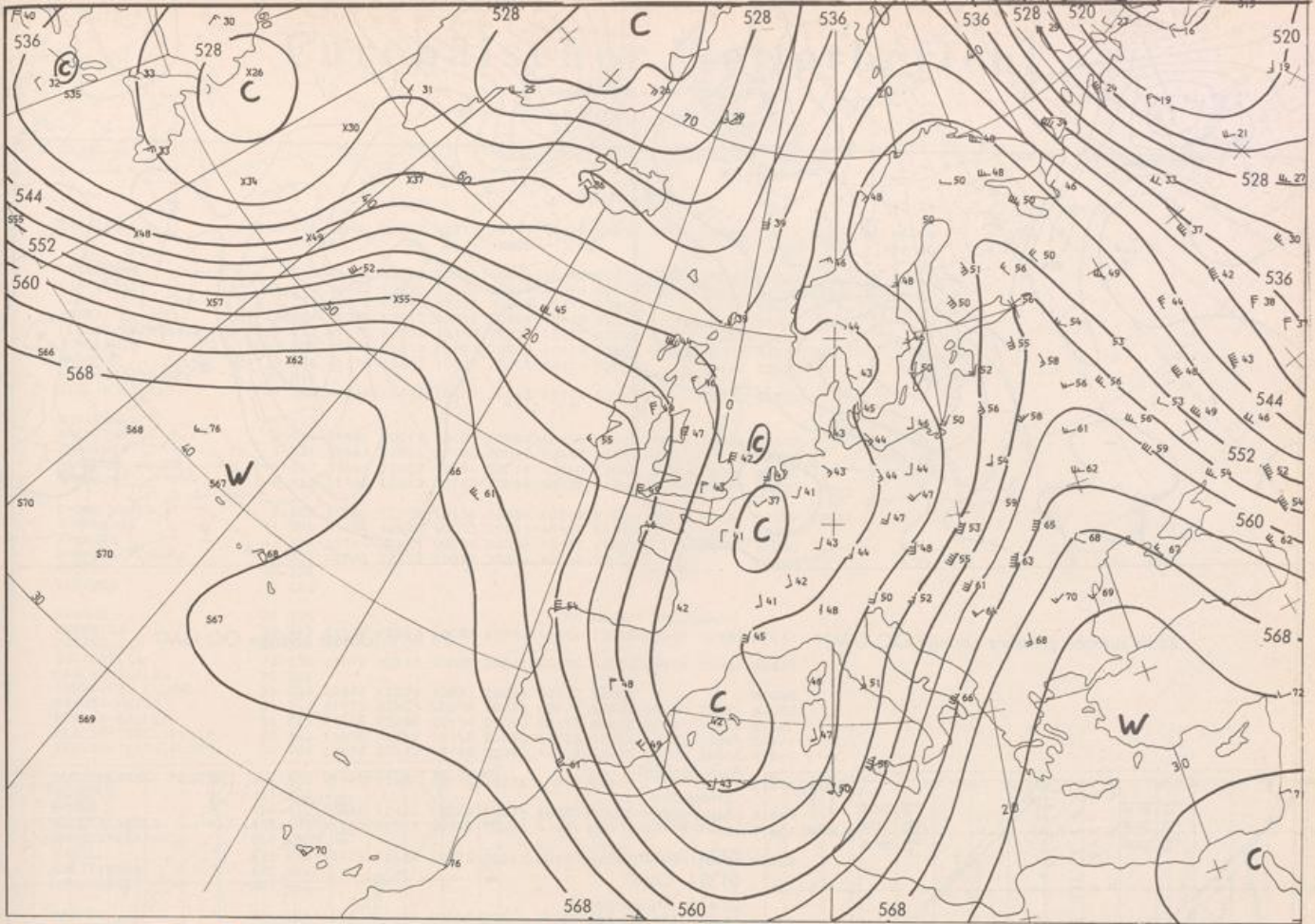


Stereogr. proj. 1:30 000 000 in 60°N

850 hPa 00 GMT

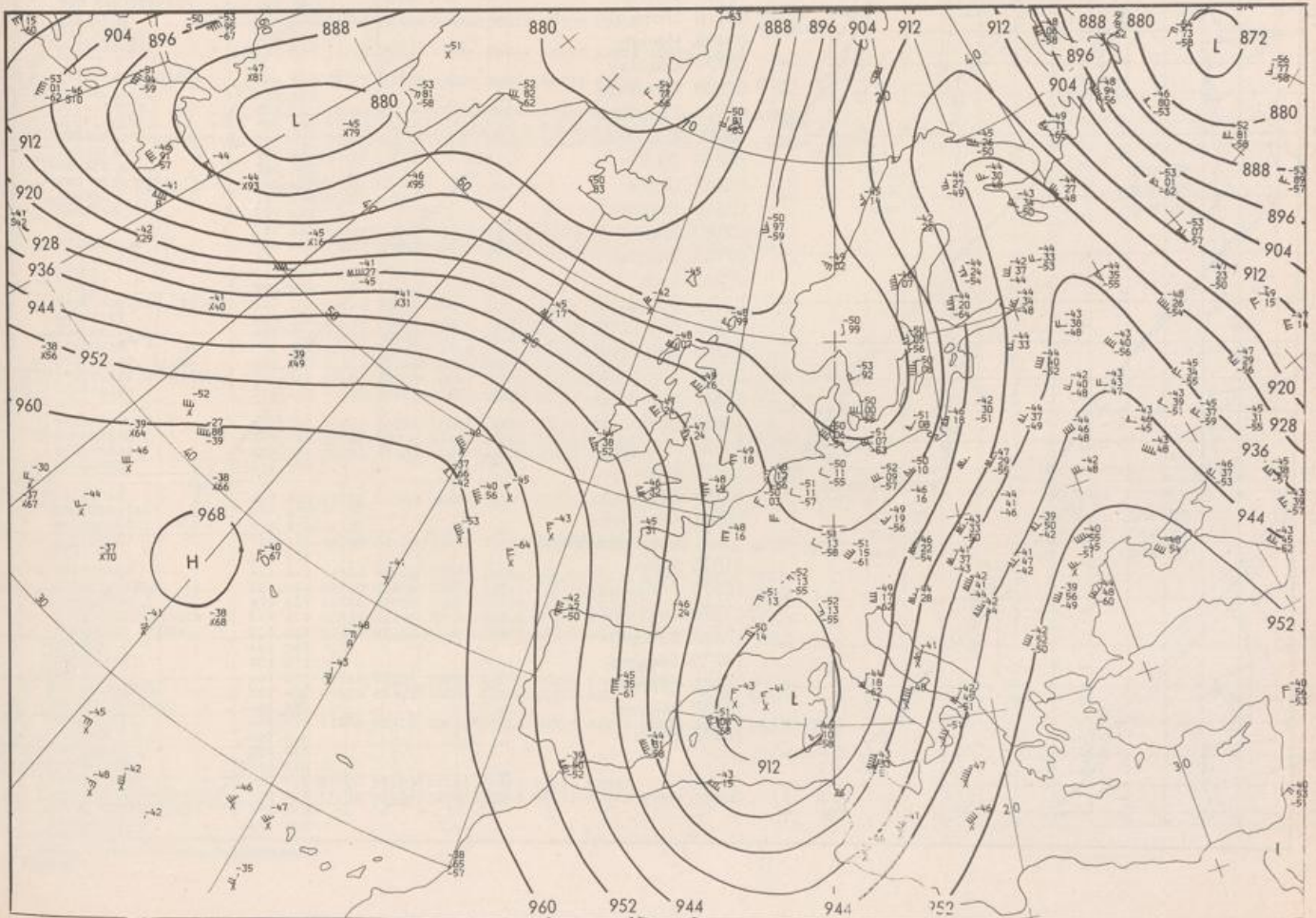


700 hPa 00 GMT

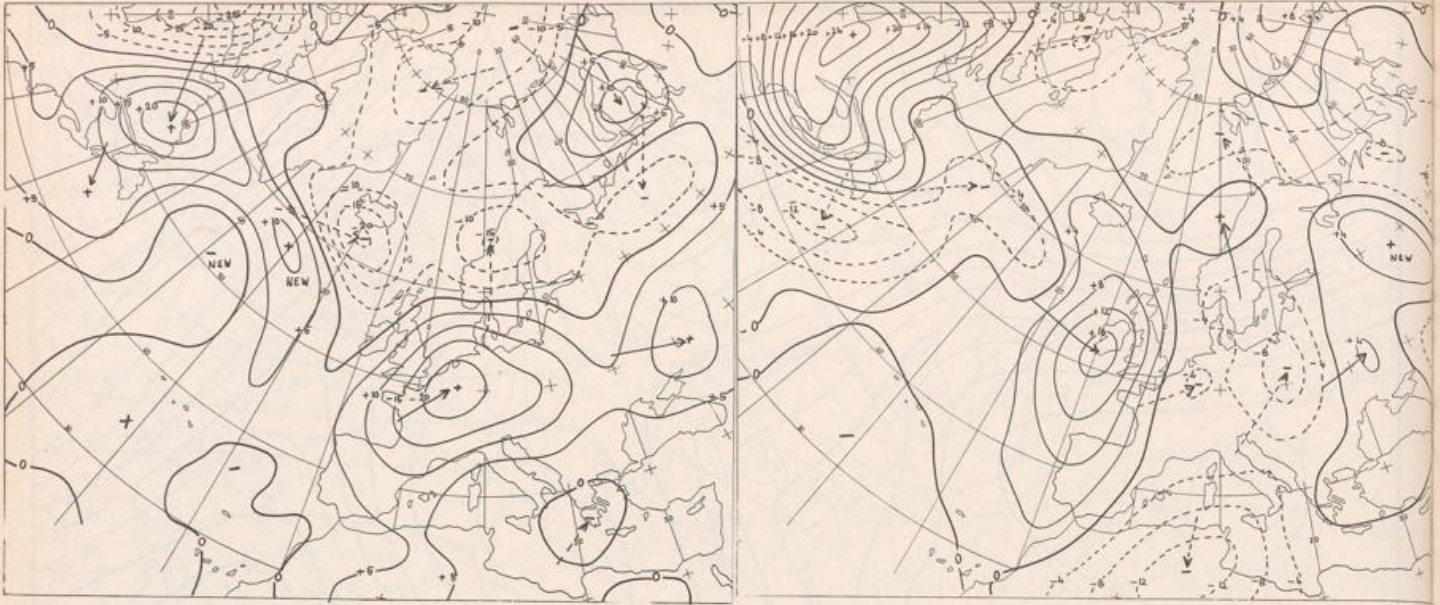


Stereogr. proj. 1:30 000 000 in 60°N

500/1000 hPa 00 GMT



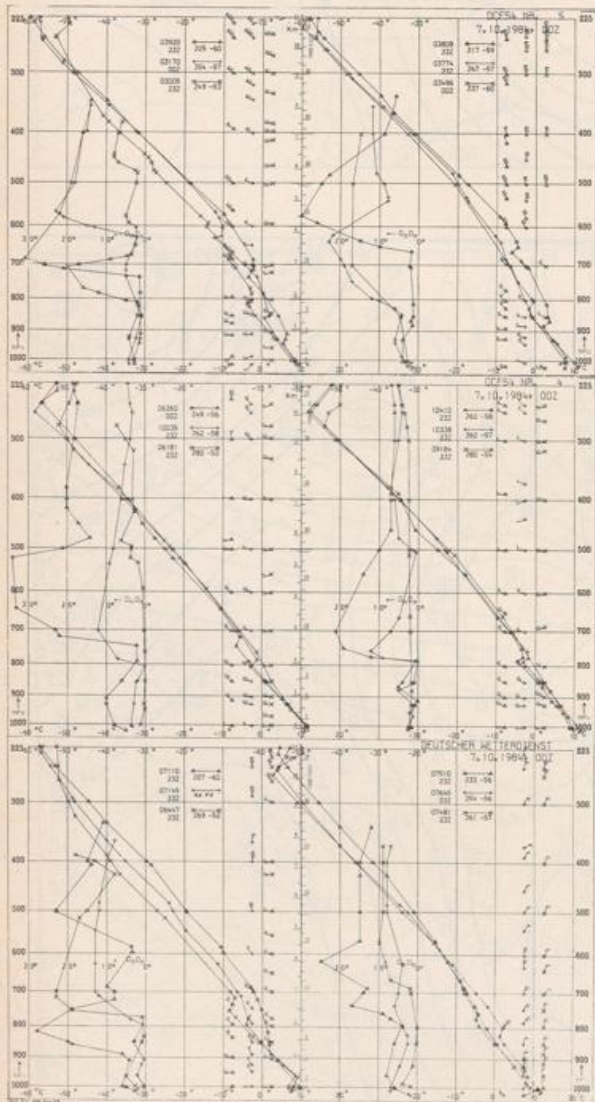
300 hPa 00 GMT



Streeogr. proj. 1:60 000 000

24 hr surface pressure change 00 GMT

24 hr thickness change 00 GMT



Aerological Diagrams 00 GMT

- 01241 Orland
- 01384 Oslo
- 01415 Stavanger
- 02465 Stockholm
- 02527 Göteborg
- 03005 Lerwick
- 03170 Shanwell
- 03496 Hemsby
- 03774 Crawley
- 03808 Camborne
- 03920 Long Kesh
- 06181 København
- 06260 De Bilt
- 06447 Uccle
- 06610 Payerne
- 07110 Brest
- 07145 Trappes
- 07481 Lyon
- 07510 Bordeaux
- 07645 Nîmes
- 09184 Greifswald
- 09393 Lindenberg
- 09548 Meiningen
- 10035 Schleswig
- 10338 Hannover
- 10410 Essen
- 10739 Stuttgart
- 10868 München-Oberschleißheim
- 11035 Wien
- 11520 Praha-Libus
- 12374 Legionowo
- 12843 Budapest
- 13275 Beograd
- 16044 Udine
- 16080 Milano
- 16242 Roma

