

# Europäischer Wetterbericht European Meteorological Bulletin Bulletin Météorologique Européen Boletín Meteorológico Europeo

Amtsblatt des Deutschen Wetterdienstes

Druck und Verlag: Deutscher Wetterdienst — Zentralamt — D 6050 Offenbach am Main, Frankfurter Straße 135, Tel.: (06 9) 80620

Erscheint täglich  
Bezugspreis monatlich 30,00 DM  
zuzügl. Porto  
Nachdruck nicht gestattet

Issued daily  
Monthly price 30,00 DM  
plus postage  
All rights reserved

Publié quotidiennement  
Prix mensuel 30,00 DM  
plus port  
Reproduction interdite

Se publica diariamente  
Precio de suscripción mensual 30,00 DM  
plus porte  
Se prohíbe la reproducción

Jahrgang  
Volume  
Volume  
Volumen

9

Sonntag  
Sunday  
Dimanche  
Domingo

16.09.1984

Nummer  
Number  
Número  
Número

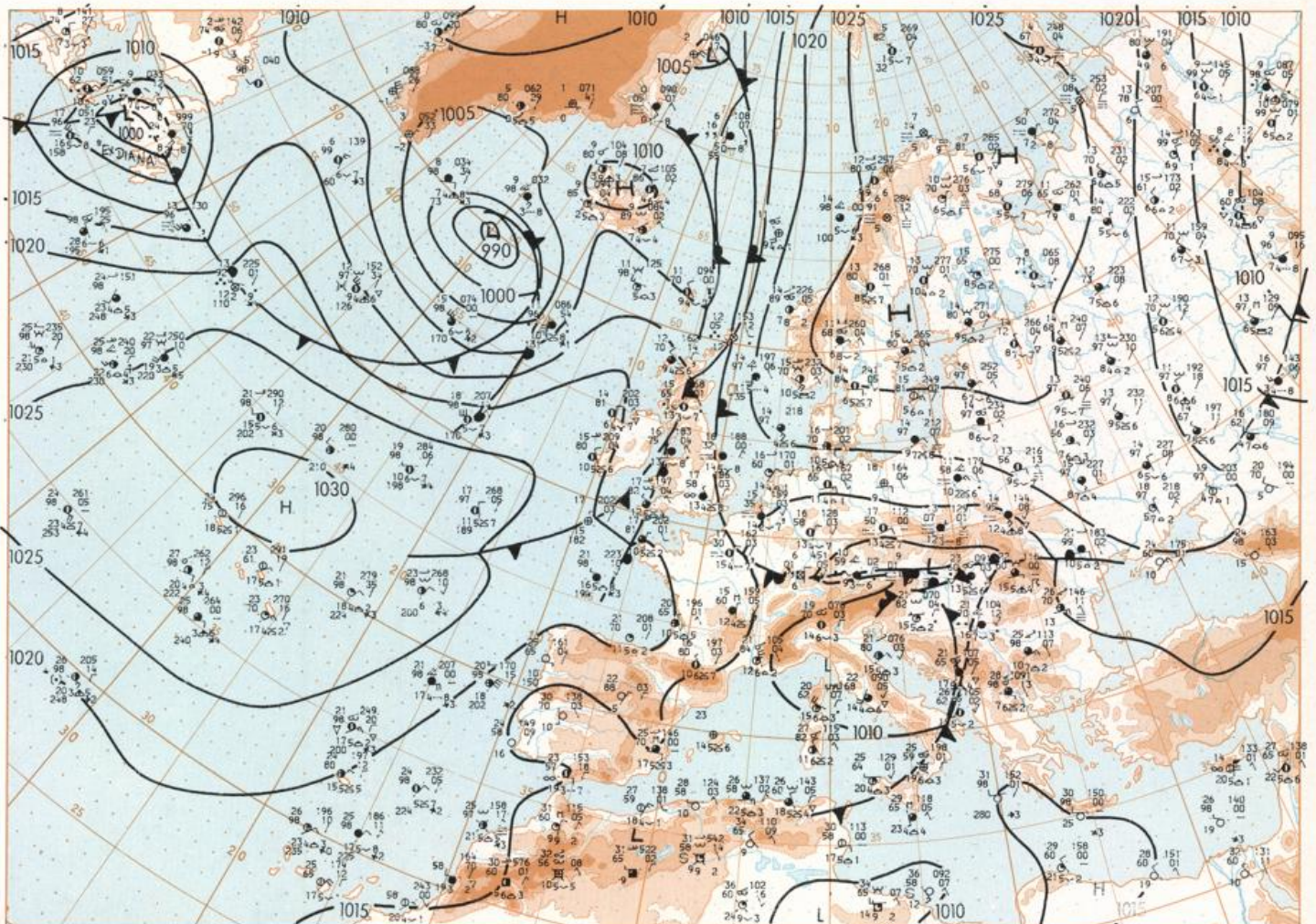
260

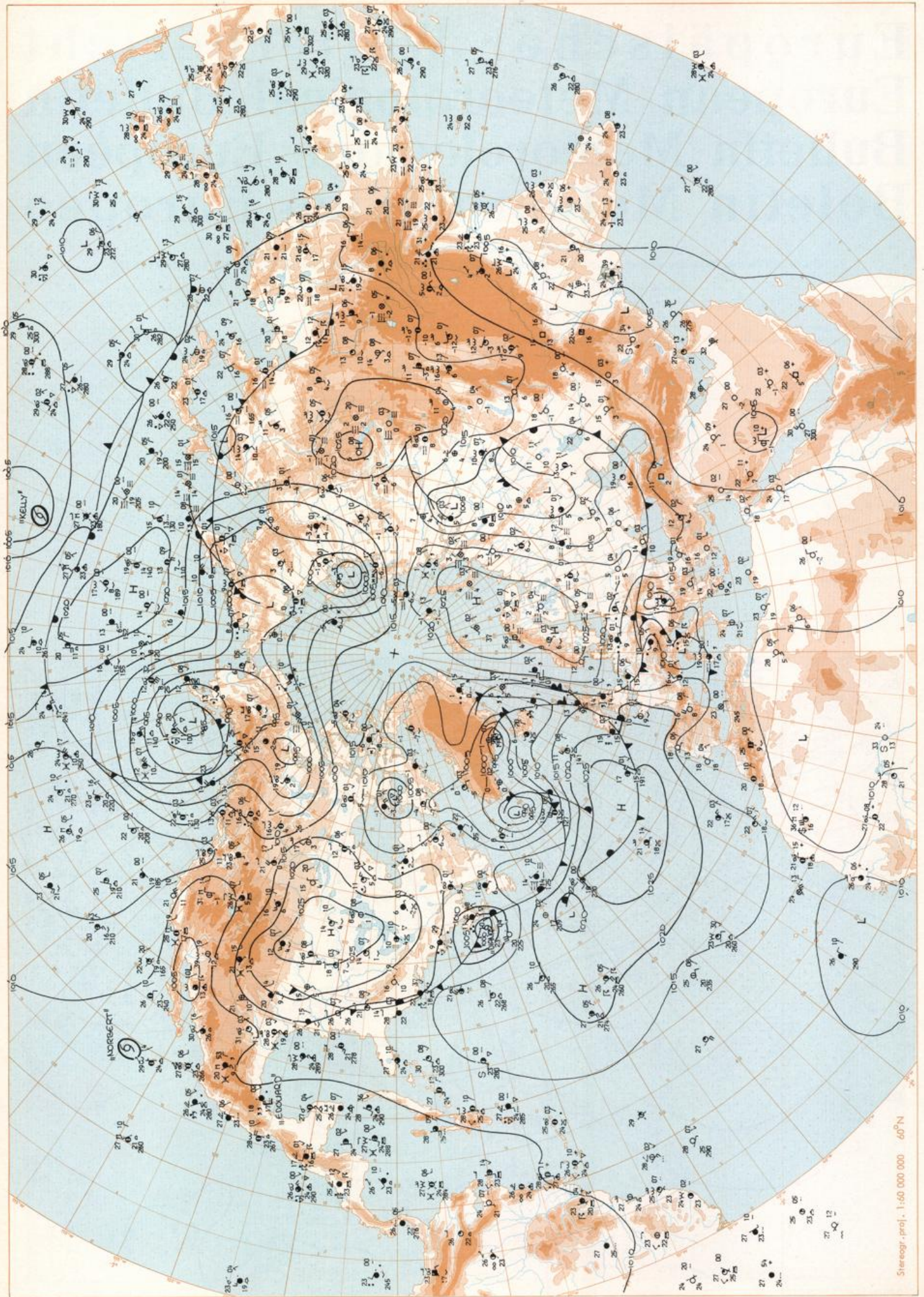
**Inhalt**  
Bodenwetterkarte 12 MGZ  
Bodenwetterkarte Nordhemisphäre 00 MGZ  
500 hPa-Fläche Nordhemisphäre 00 MGZ  
200 hPa-Fläche Nordhemisphäre 00 MGZ  
100 hPa-Fläche Nordhemisphäre 00 MGZ  
850 hPa 00 MGZ, 700 hPa 00 MGZ  
Relative Topographie 500/1000 hPa 00 MGZ  
300 hPa 00 MGZ  
24hdy. Boden-druckänderung 00 MGZ  
24hdy. Änderung relative Topographie  
500/1000 hPa 00 MGZ  
Aerologische Diagramme 00 MGZ

**Content**  
Surface chart 12 GMT  
Surface chart northern hemisphere 00 GMT  
500 hPa surface northern hemisphere 00 GMT  
200 hPa surface northern hemisphere 00 GMT  
100 hPa surface northern hemisphere 00 GMT  
850 hPa 00 GMT, 700 hPa 00 GMT  
Thickness chart 500/1000 hPa 00 GMT  
300 hPa 00 GMT  
24 hr surface pressure change 00 GMT  
24 hr thickness change  
500/1000 hPa 00 GMT  
Aerological diagrams 00 GMT

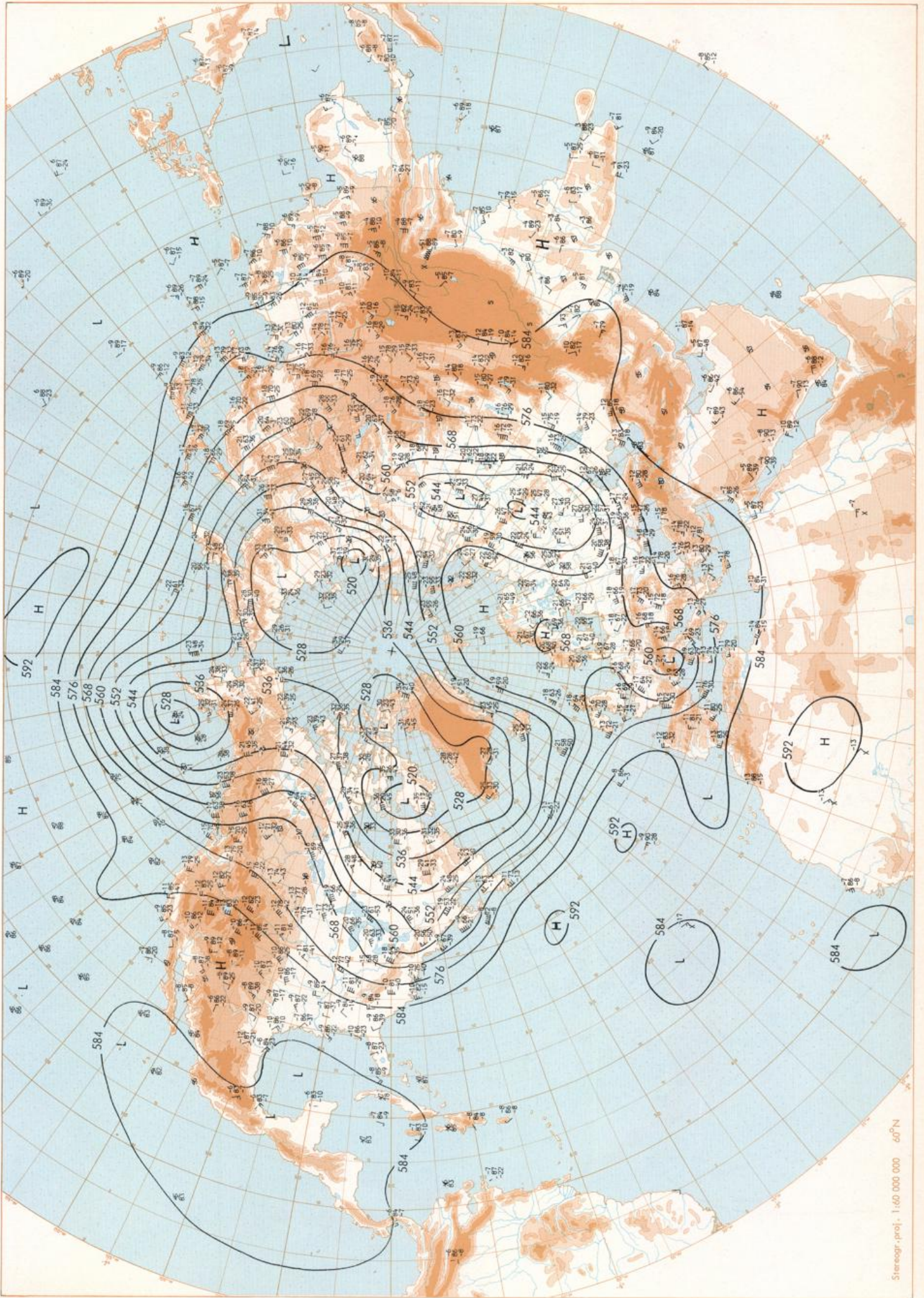
**Contenu**  
Carte de surface à 12 TU  
Carte de surface sur l'hémisphère nord à 00 TU  
Surface 500 hPa sur l'hémisphère nord à 00 TU  
Surface 200 hPa sur l'hémisphère nord à 00 TU  
Surface 100 hPa sur l'hémisphère nord à 00 TU  
850 hPa 00 TU, 700 hPa 00 TU  
Carte d'épaisseur 500/1000 hPa 00 TU  
300 hPa 00 TU  
Variations de pression en 24 h (niveau mer)  
en hPa à 00 TU  
Variations d'épaisseur 500/1000 hPa  
en 24 h 00 TU  
Diagrammes aérologiques 00 TU

**Contenido**  
Análisis en superficie a las 12 T.M.G.  
Análisis en superficie hemisferio norte a las 00 T.M.G.  
Topografía de la superficie de 500 hPa hemisferio  
norte a las 00 T.M.G.  
Topografía de la superficie de 200 hPa hemisferio  
norte a las 00 T.M.G.  
Topografía de la superficie de 100 hPa hemisferio  
norte a las 00 T.M.G.  
850 hPa 00 T.M.G., 700 hPa 00 T.M.G.  
Relativa 500/1000 hPa 00 T.M.G.  
300 hPa 00 T.M.G.  
Variación de la presión del suelo 24 h en hPa  
a las 00 T.M.G.  
Variación de espesor 500/1000 hPa  
en 24 h 00 T.M.G.  
Diagramas aerológicos 00 T.M.G.

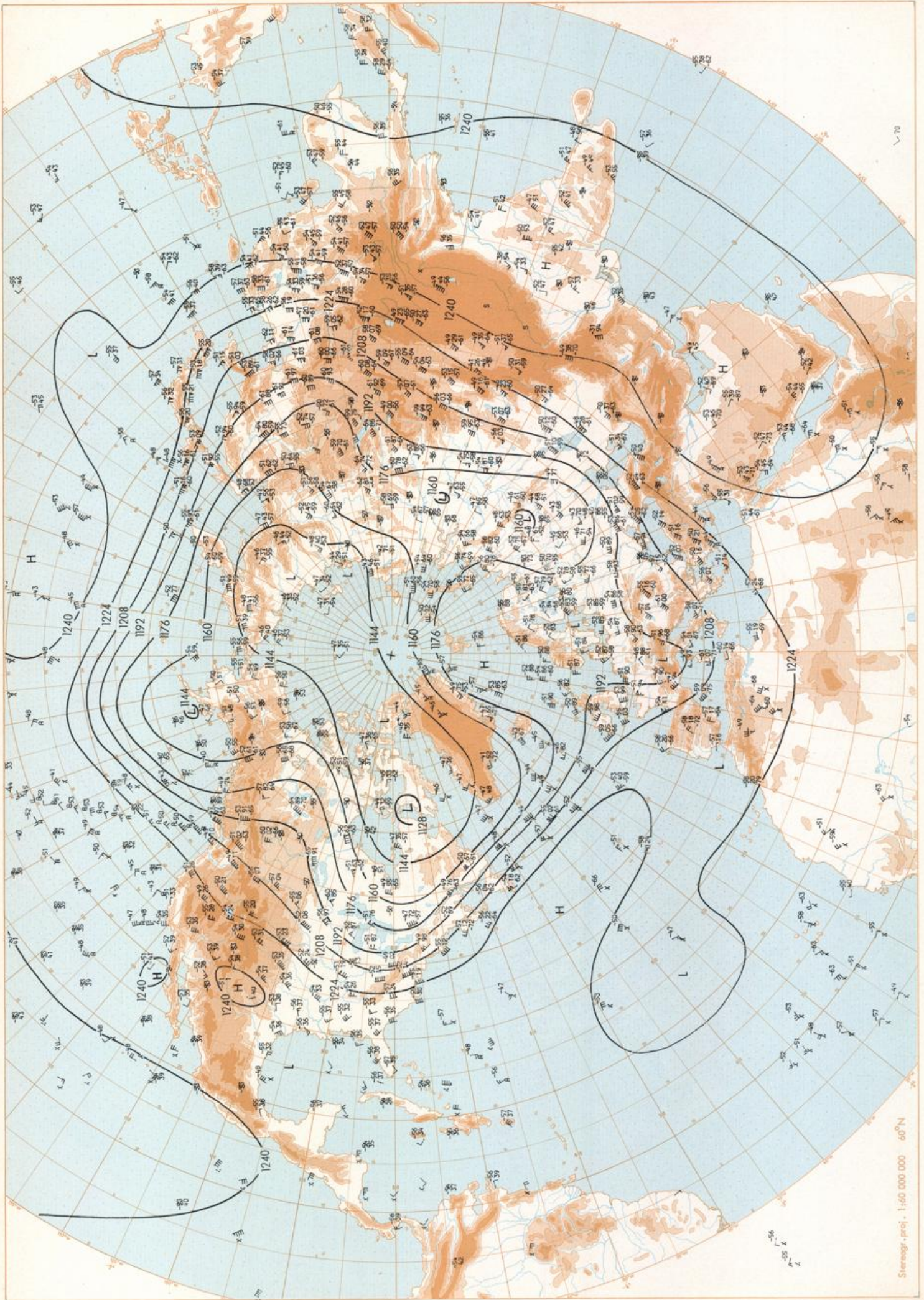




Stereogr. proj. 1:60 000 000 60°N

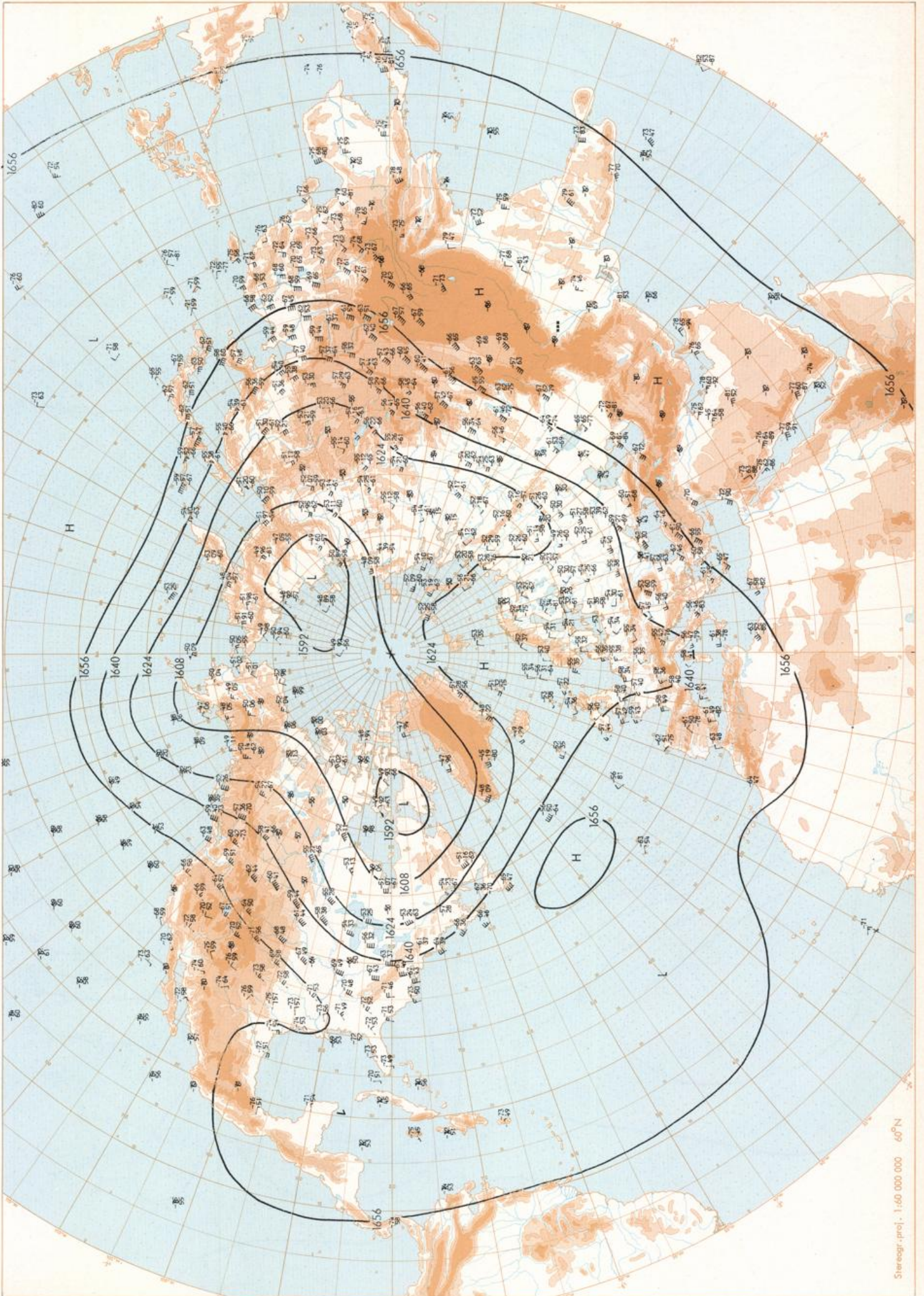


500 hPa 00 GMT



200 hPa 00 GMT

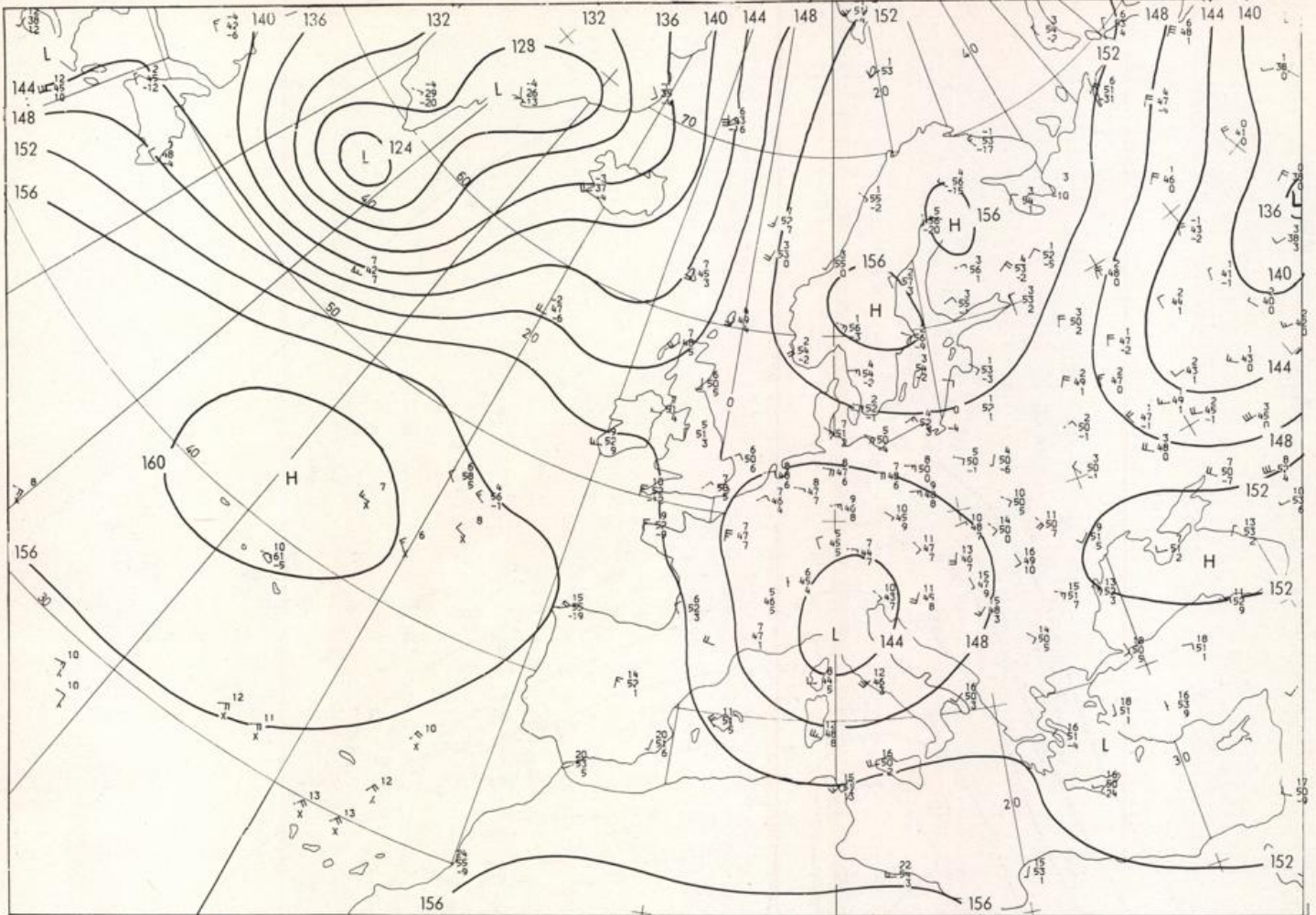
Stereogr. proj. 1:50 000 000 60°N



100 hPa 00 GMT

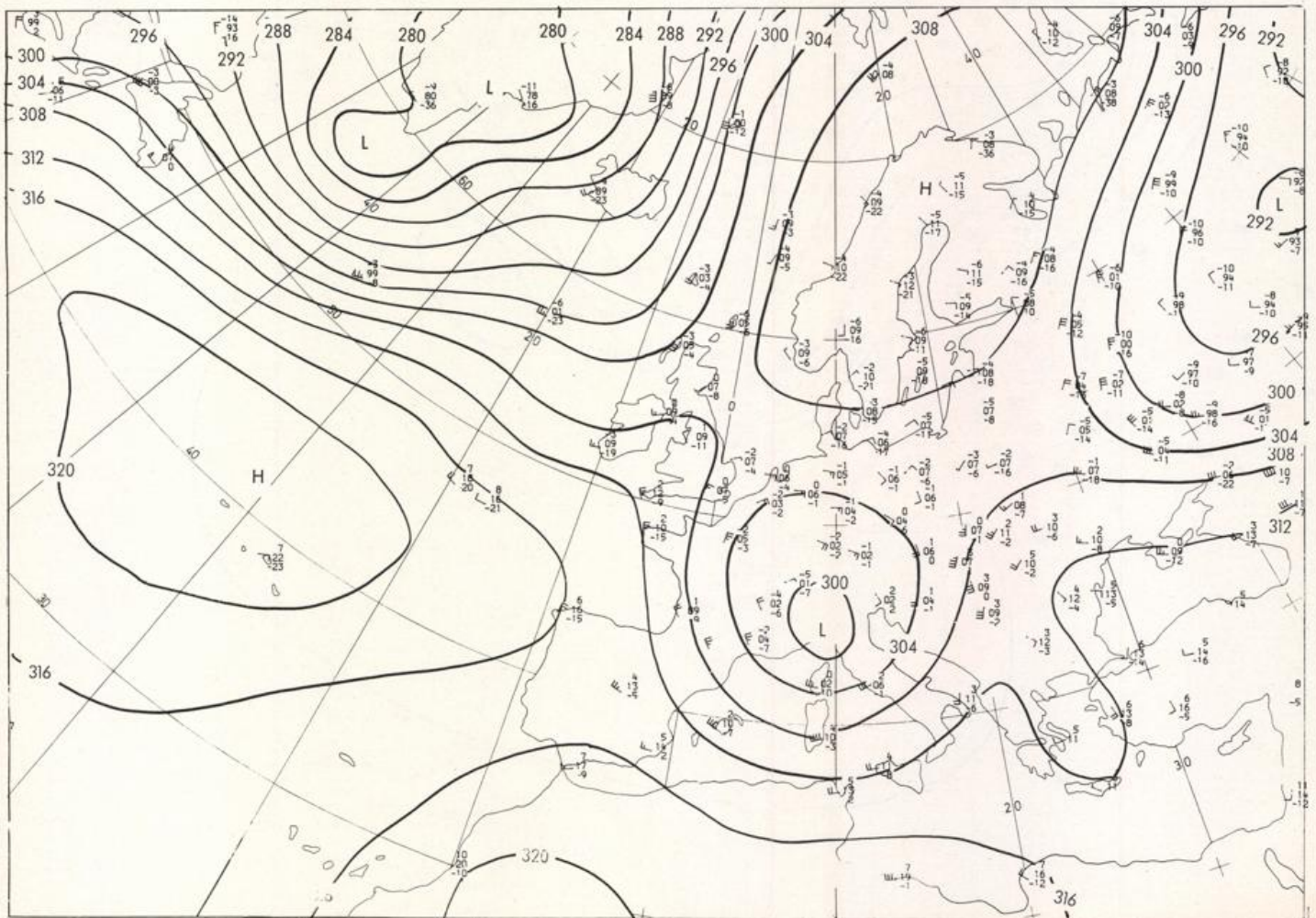
Stereogr. proj. 1:60 000 000 60°N

16.09.1984

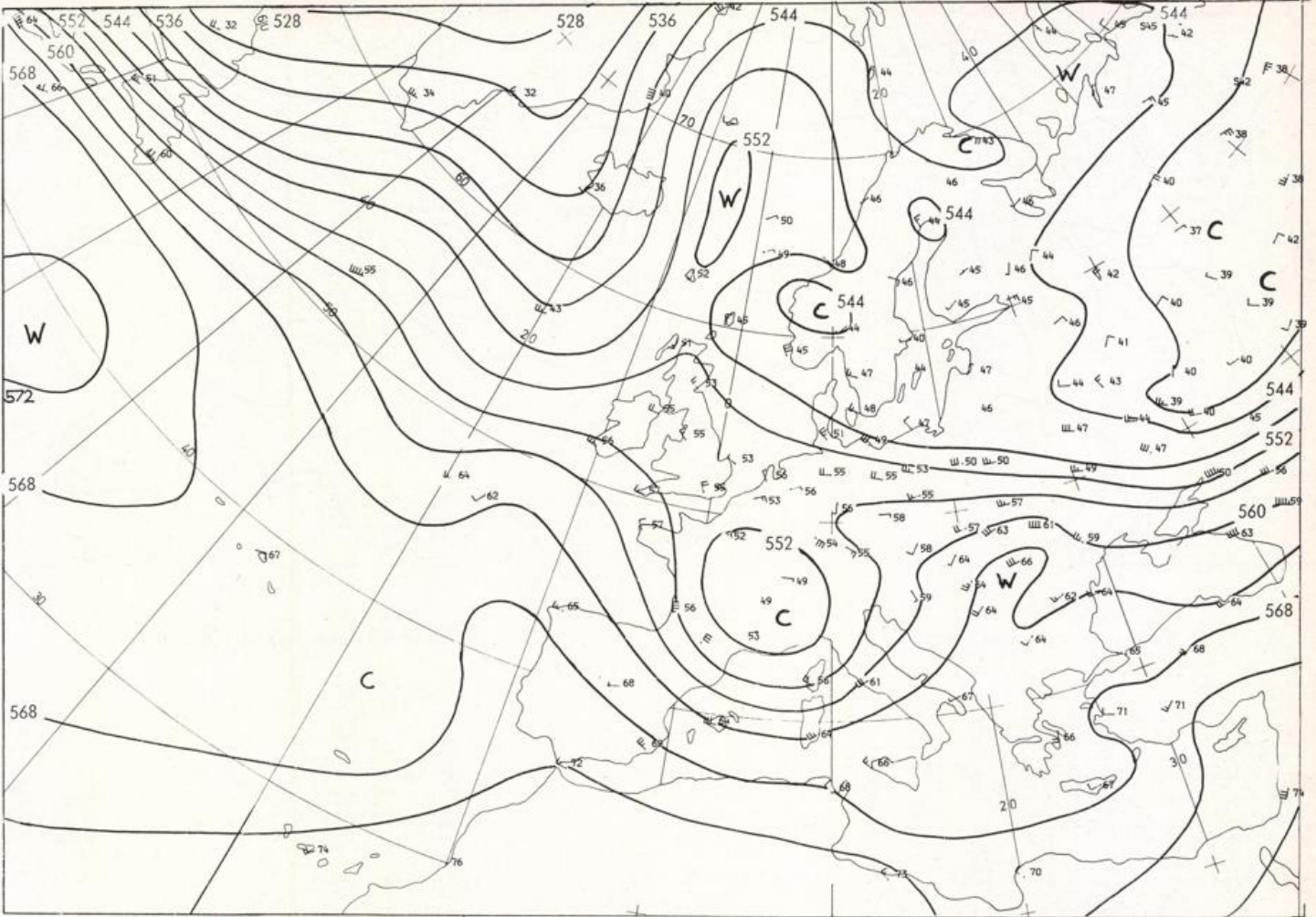


Stereogr. proj. 1:30 000 000 in 60°N

850 hPa 00 GMT

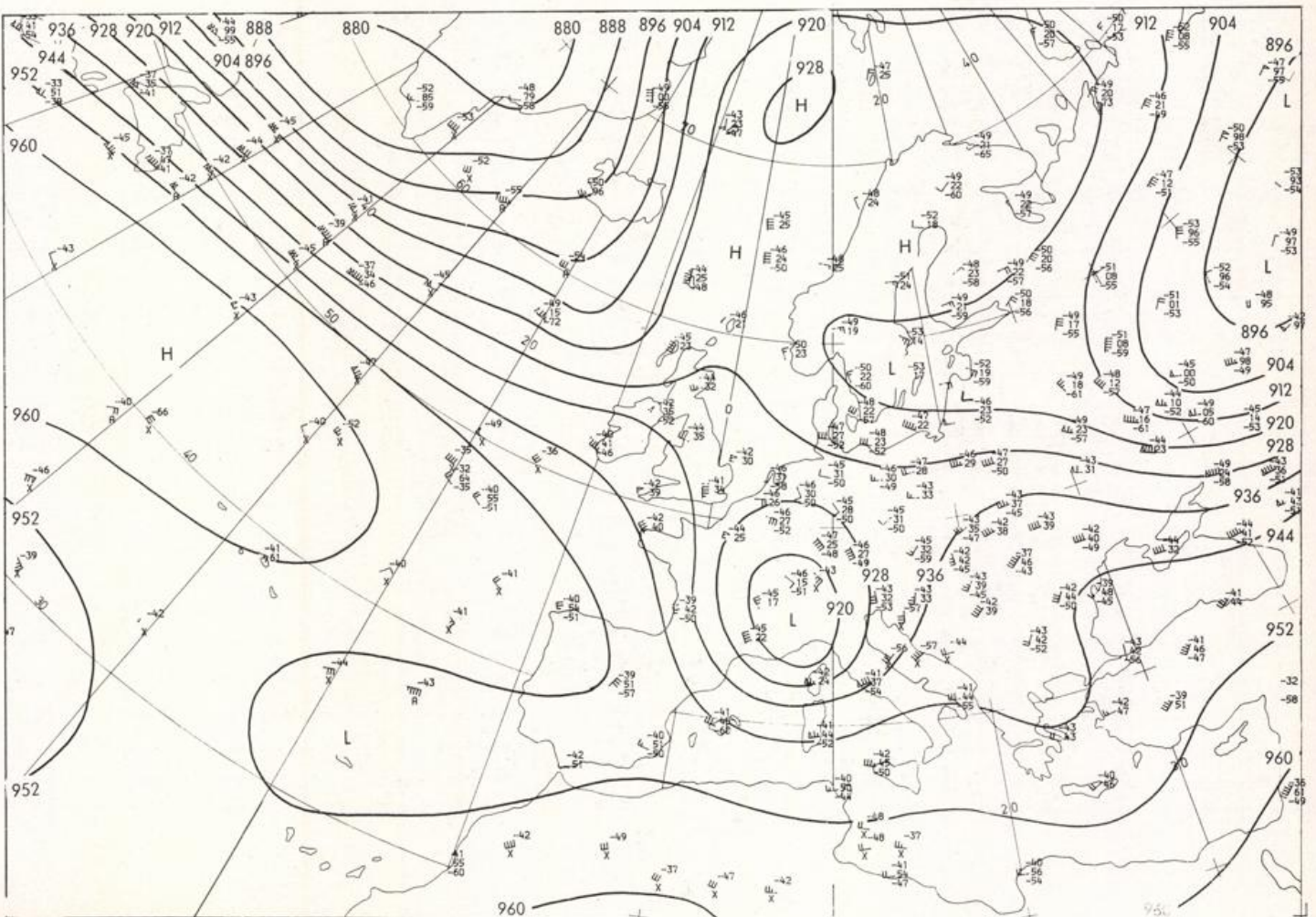


700 hPa 00 GMT

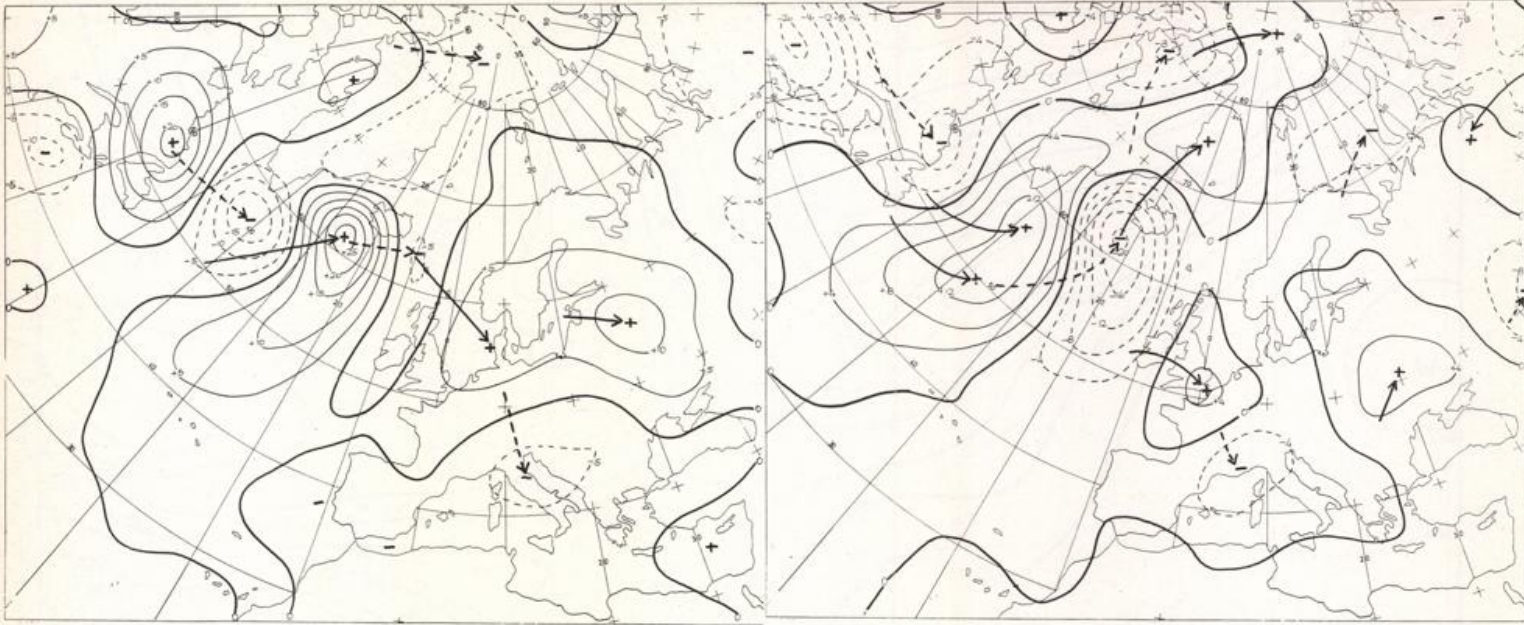


Stereogr. proj. 1:30 000 000 in 60°N

500/1000 hPa 00 GMT



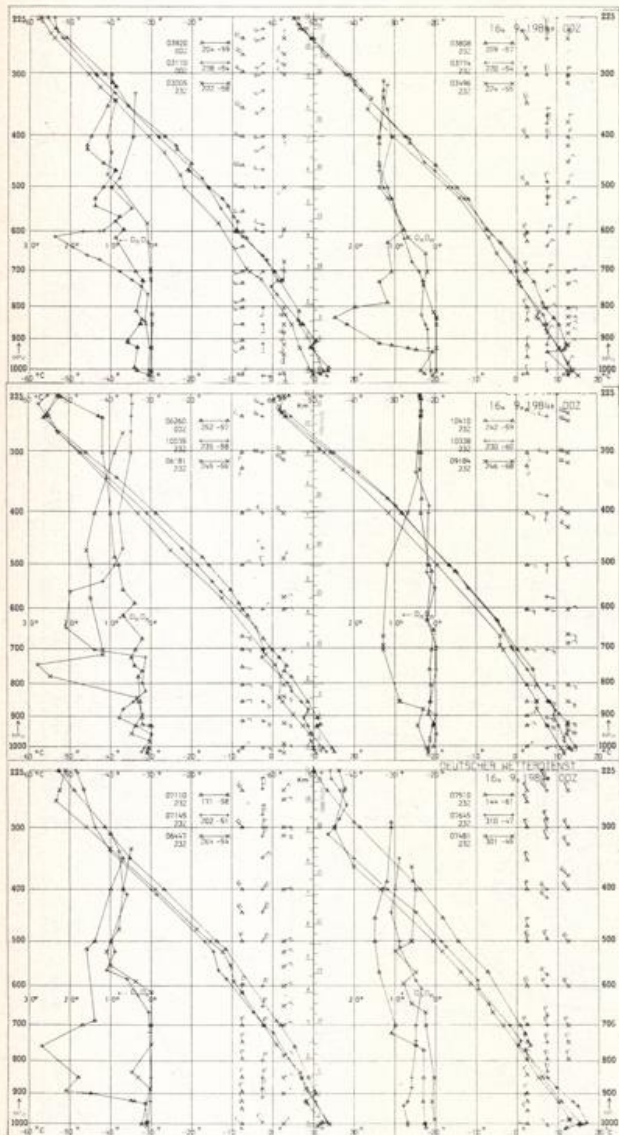
300 hPa 00 GMT



Stereogr. proj. 1:60 000 000

24 hr surface pressure change OO GMT

24 hr thickness change OO GMT



Aerological Diagrams 00 GMT

- 01241 Orland
- 01384 Oslo
- 01415 Stavanger
- 02465 Stockholm
- 02527 Goteborg
- 03005 Lerwick
- 03170 Shanwell
- 03496 Hemsby
- 03774 Crawley
- 03808 Comborne
- 03920 Long Kesh
- 06181 Kobenhavn
- 06260 De Bilt
- 06447 Uccle
- 06610 Payerne
- 07110 Brest
- 07145 Trappes
- 07481 Lyon
- 07510 Bordeaux
- 07645 Nimes
- 09184 Greifswald
- 09393 Lindenberg
- 09548 Meiningen
- 10035 Schleswig
- 10338 Hannover
- 10410 Essen
- 10739 Stuttgart
- 10868 München-Oberschleißheim
- 11035 Wien
- 11520 Praha-Libus
- 12374 Legionowo
- 12843 Budapest
- 13275 Beograd
- 16044 Udine
- 16080 Milano
- 16242 Roma

