

Europäischer Wetterbericht European Meteorological Bulletin Bulletin Météorologique Européen Boletín Meteorológico Europeo

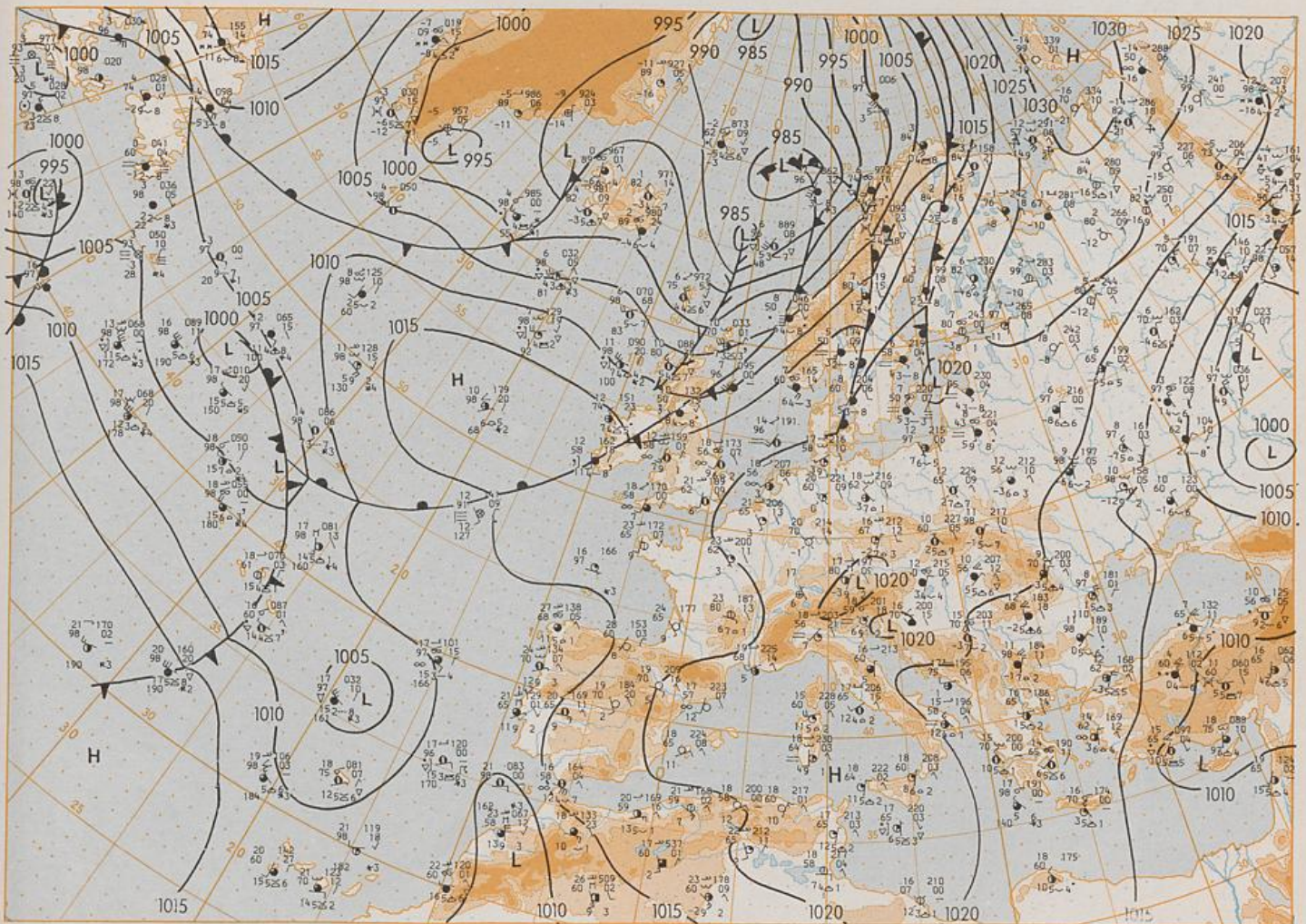
Amtsblatt des Deutschen Wetterdienstes

Druck und Verlag: Deutscher Wetterdienst — Zentralamt — D 6050 Offenbach am Main, Frankfurter Straße 135, Tel.: (0611) 80621

Er erscheint täglich	Issued daily	Publié quotidiennement	Se publica diariamente
Bezugspreis monatlich 30,00 DM zuzügl. Porto	Monthly price 30,00 DM plus postage	Prix mensuel 30,00 DM plus port	Precio de suscripción mensual 30,00 DM plus porte
Nachdruck nicht gestattet	All rights reserved	Reproduction interdite	Se prohíbe la reproducción

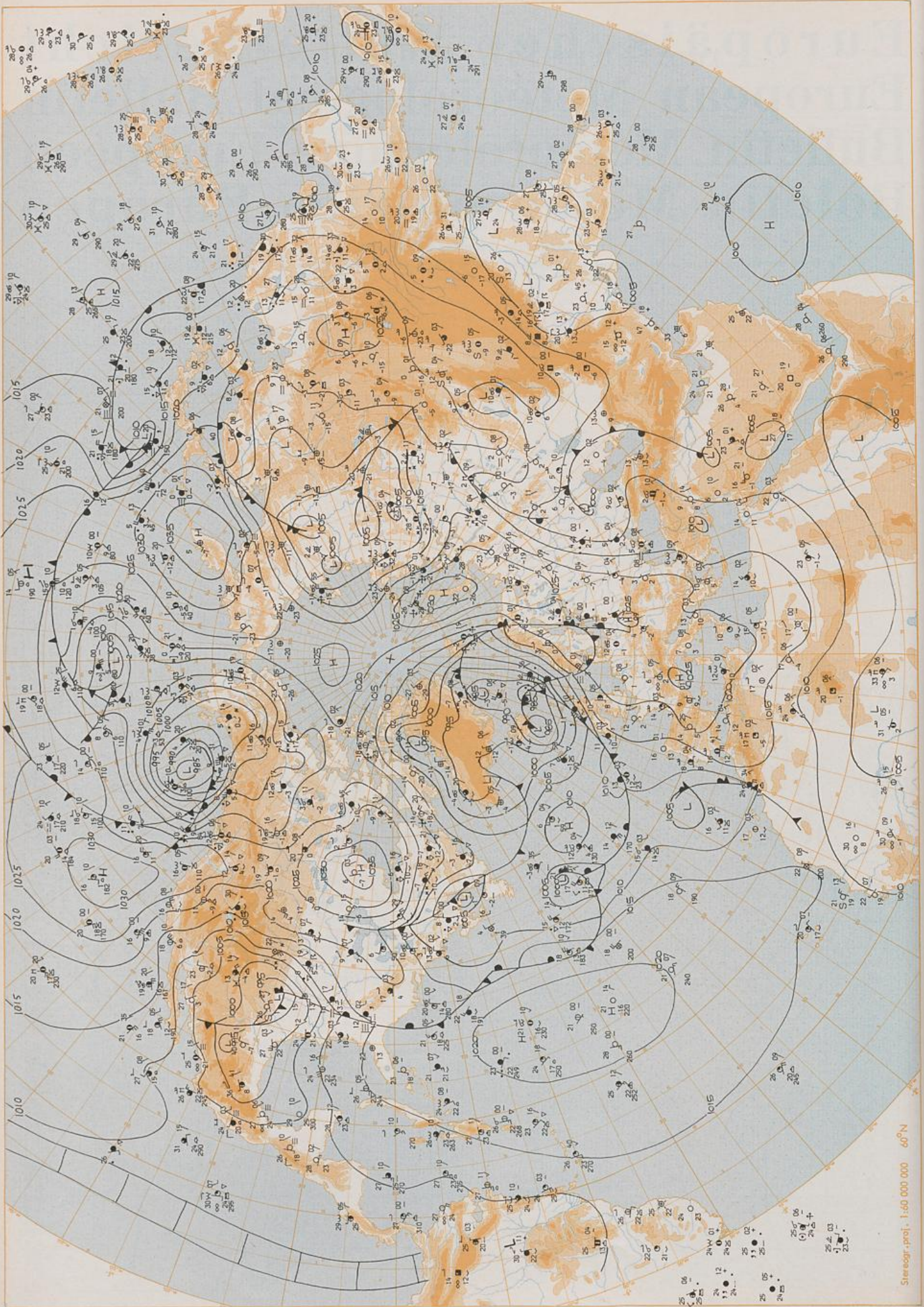
Jahrgang Volume Volume Volumen	9	Samstag Saturday Samedi Sábado	21.04.1984	Nummer Number Número Número	112
---	---	---	------------	--------------------------------------	-----

Inhalt	Content	Contenu	Contenido
Bodenwetterkarte 12 MGZ	Surface chart 12 GMT	Carte de surface à 12 TU	Análisis en superficie a las 12 T.M.G.
Bodenwetterkarte Nordhemisphäre 00 MGZ	Surface chart northern hemisphere 00 GMT	Carte de surface sur l'hémisphère nord à 00 TU	Análisis en superficie hemisferio norte a las 00 T.M.G.
500 hPa-Fläche Nordhemisphäre 00 MGZ	500 hPa surface northern hemisphere 00 GMT	Surface 500 hPa sur l'hémisphère nord à 00 TU	Topografía de la superficie de 500 hPa hemisferio norte a las 00 T.M.G.
200 hPa-Fläche Nordhemisphäre 00 MGZ	200 hPa surface northern hemisphere 00 GMT	Surface 200 hPa sur l'hémisphère nord à 00 TU	Topografía de la superficie de 200 hPa hemisferio norte a las 00 T.M.G.
100 hPa-Fläche Nordhemisphäre 00 MGZ	100 hPa surface northern hemisphere 00 GMT	Surface 100 hPa sur l'hémisphère nord à 00 TU	Topografía de la superficie de 100 hPa hemisferio norte a las 00 T.M.G.
850 hPa 00 MGZ, 700 hPa 00 MGZ	850 hPa 00 GMT, 700 hPa 00 GMT	850 hPa 00 TU, 700 hPa 00 TU	850 hPa 00 T.M.G., 700 hPa 00 T.M.G.
Relative Topographie 500/1000 hPa 00 MGZ	Thickness chart 500/1000 hPa 00 GMT	Carte d'épaisseur 500/1000 hPa 00 TU	Relativo 500/1000 hPa 00 T.M.G.
300 hPa 00 MGZ	300 hPa 00 GMT	300 hPa 00 TU	300 hPa 00 T.M.G.
24stünd. Bodendruckänderung 00 MGZ	24 hr surface pressure change 00 GMT	Variations de pression en 24 h (niveau mer) en hPa à 00 TU	Variación de la presión del suelo 24 h en hPa a las 00 T.M.G.
24stünd. Änderung relative Topographie 500/1000 hPa 00 MGZ	24 hr thickness change 500/1000 hPa 00 GMT	Variations d'épaisseur 500/1000 hPa en 24 h 00 TU	Variación de espesor 500/1000 hPa en 24 h 00 T.M.G.
Aerologische Diagramme 00 MGZ	Aerological diagram 00 GMT	Diagrammes aérologiques 00 TU	Diagramas aerológicos 00 T.M.G.

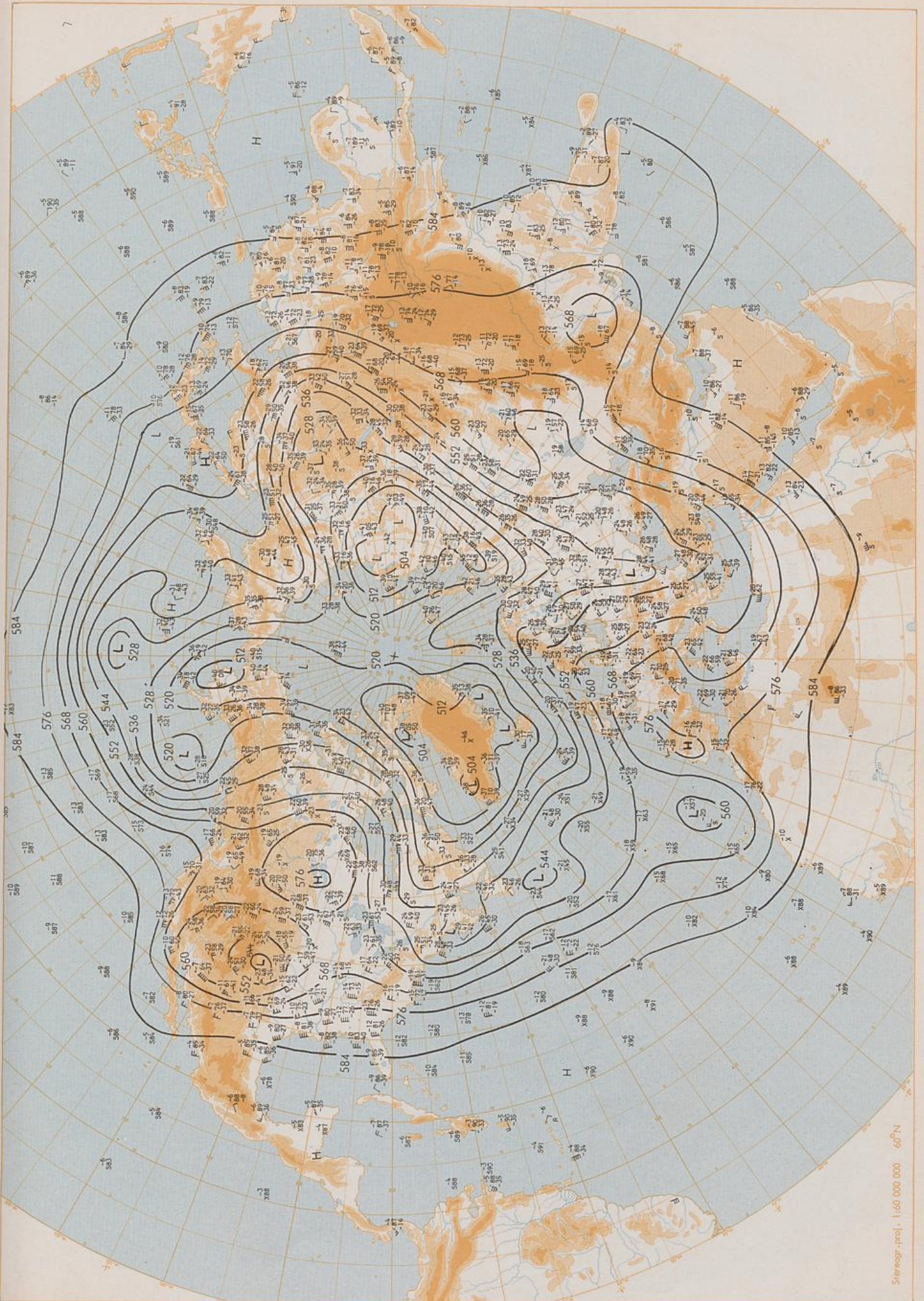


Stereogr. proj.: 1:30 000 000 60°N

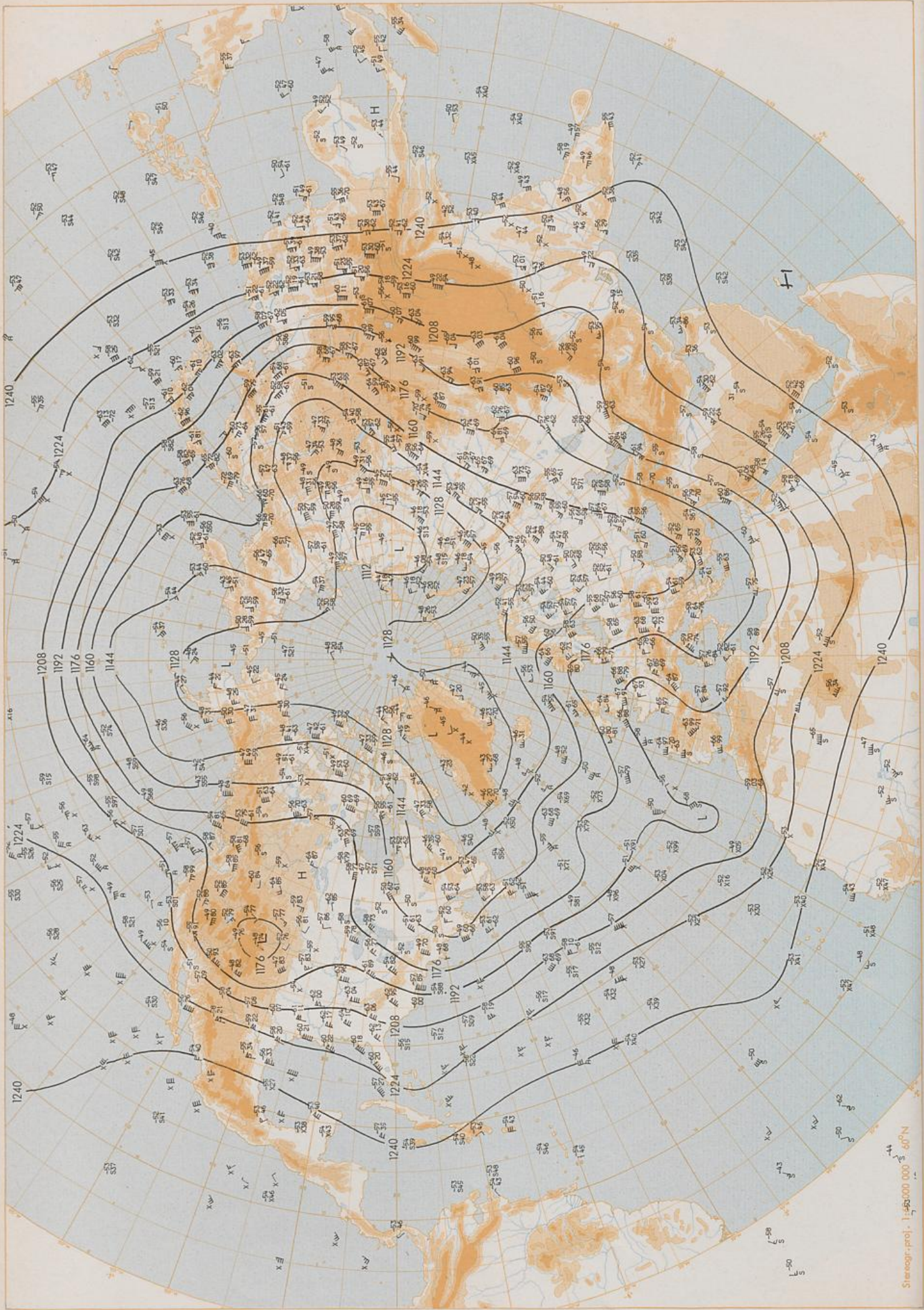
Surface chart 12 GMT



Scale: 1:60 000 000 60°N

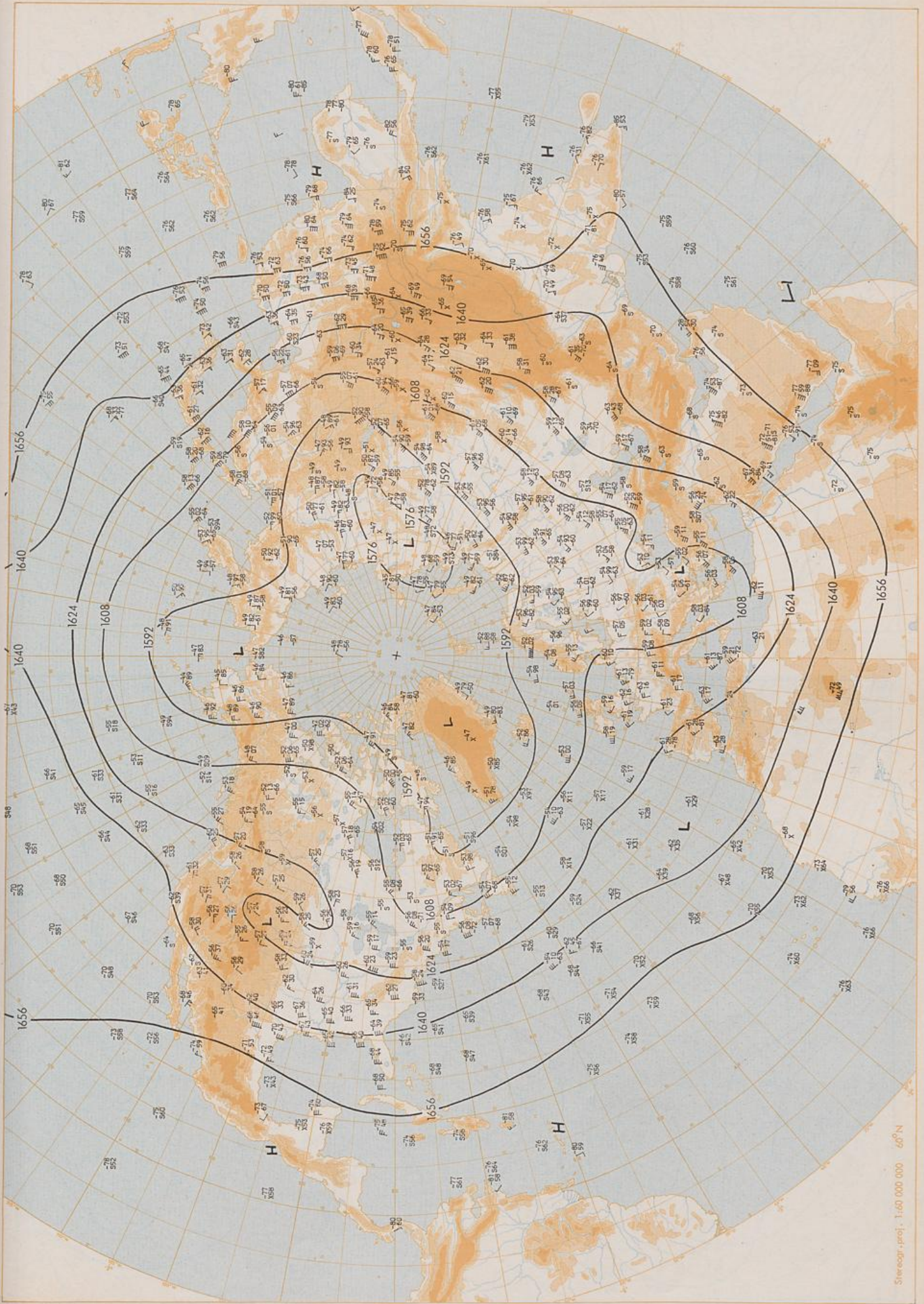


500 hPa 00 GMT

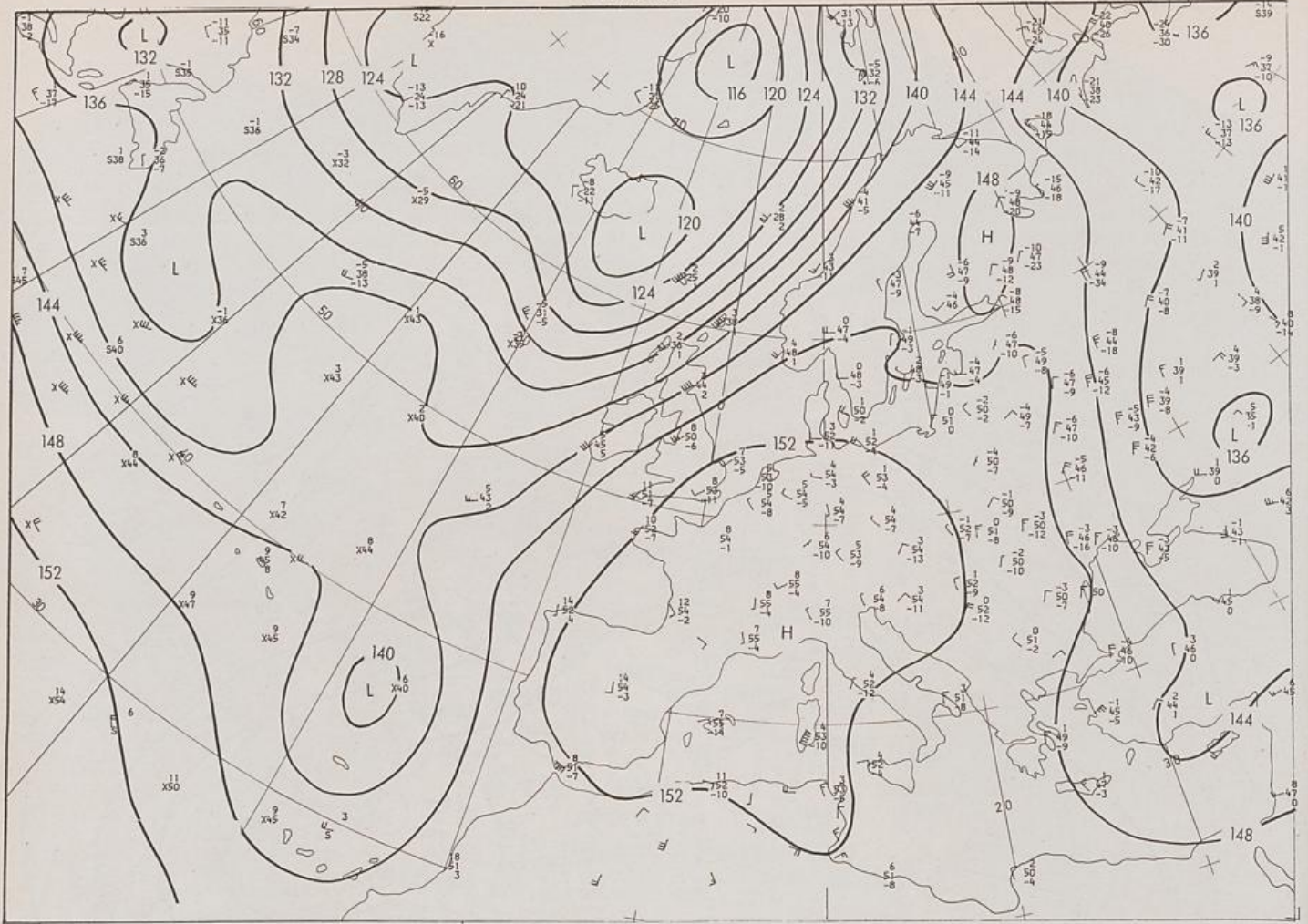


200 hPa 00 GMT

Stereogr. proj. 1:400,000 000 S 60°N

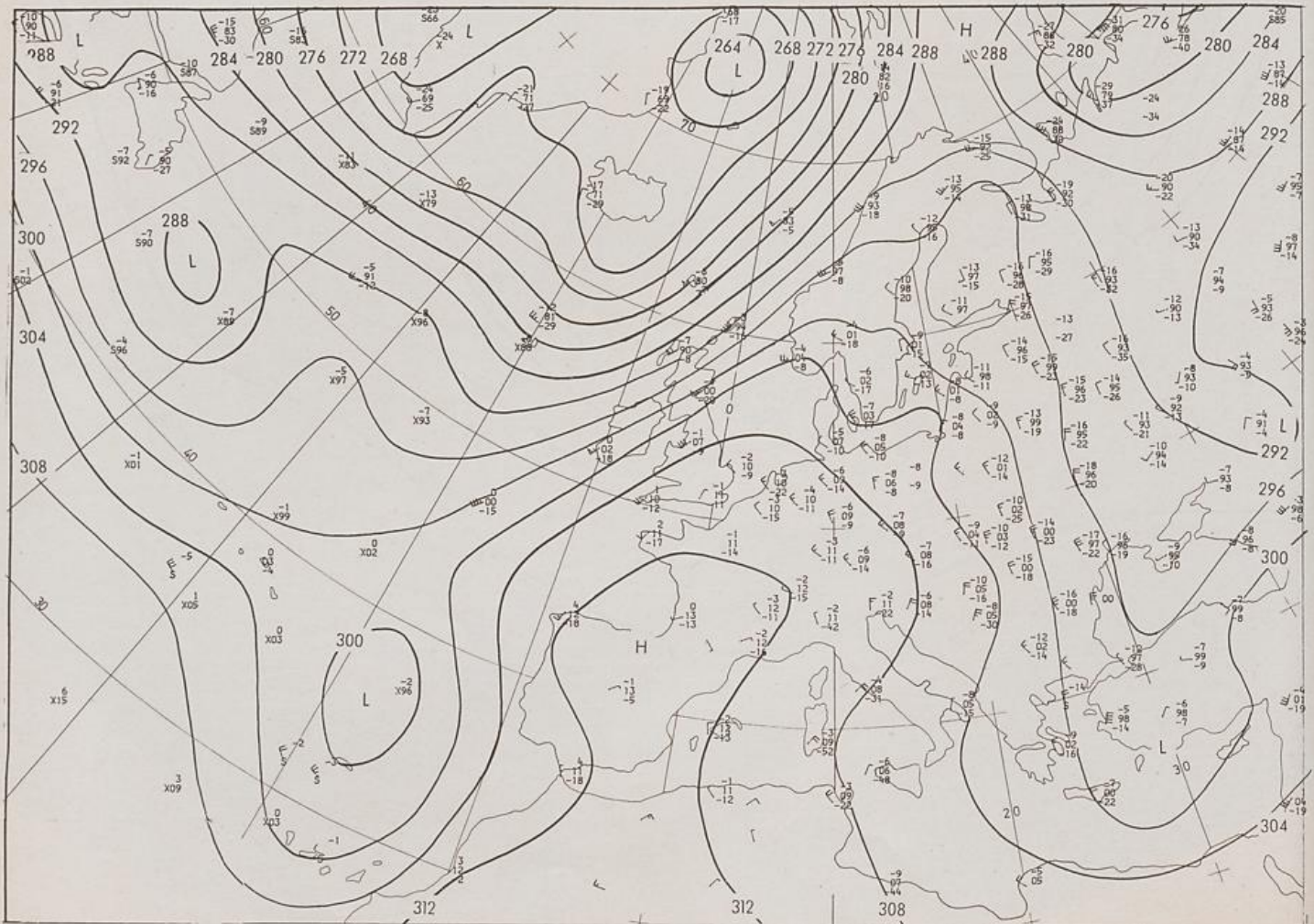


21.04.1984

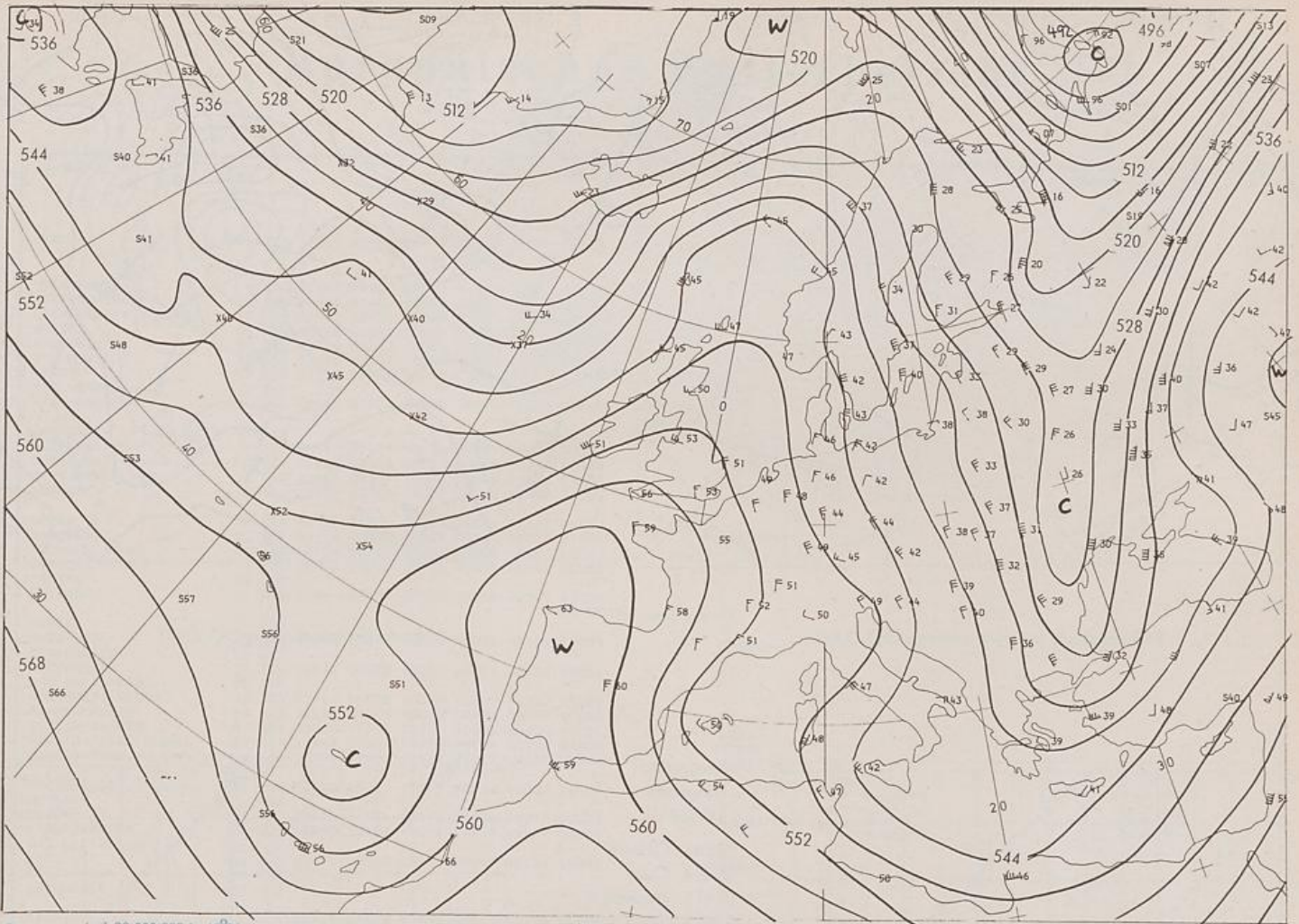


Stereogr. proj. 1:30 000 000 in 60°N

850 hPa 00 GMT

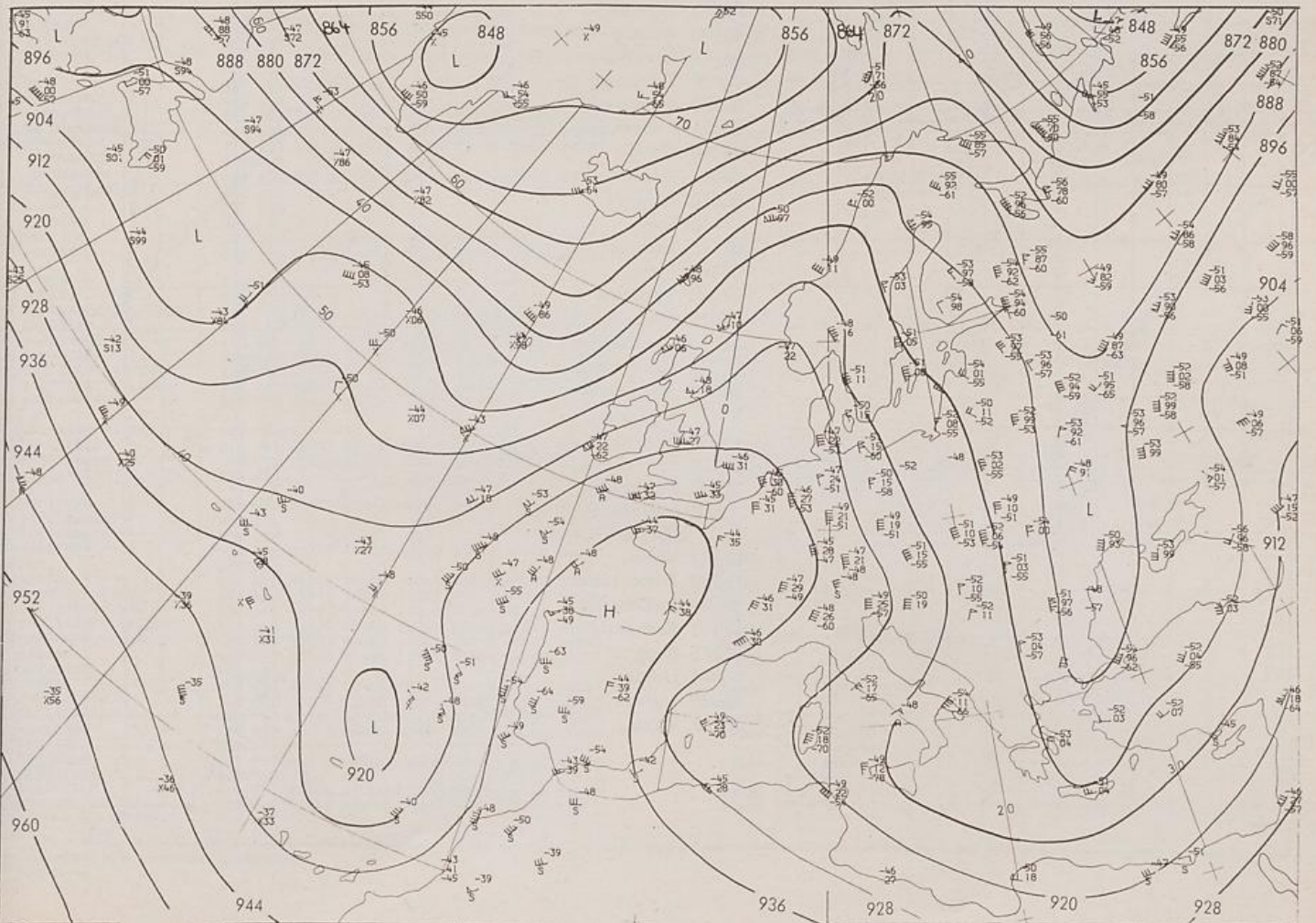


700 hPa 00 GMT



Stereogr.-proj. 1:30 000 000 in 50°N

500/1000 hPa 00 GMT



300 hPa 00 GMT

