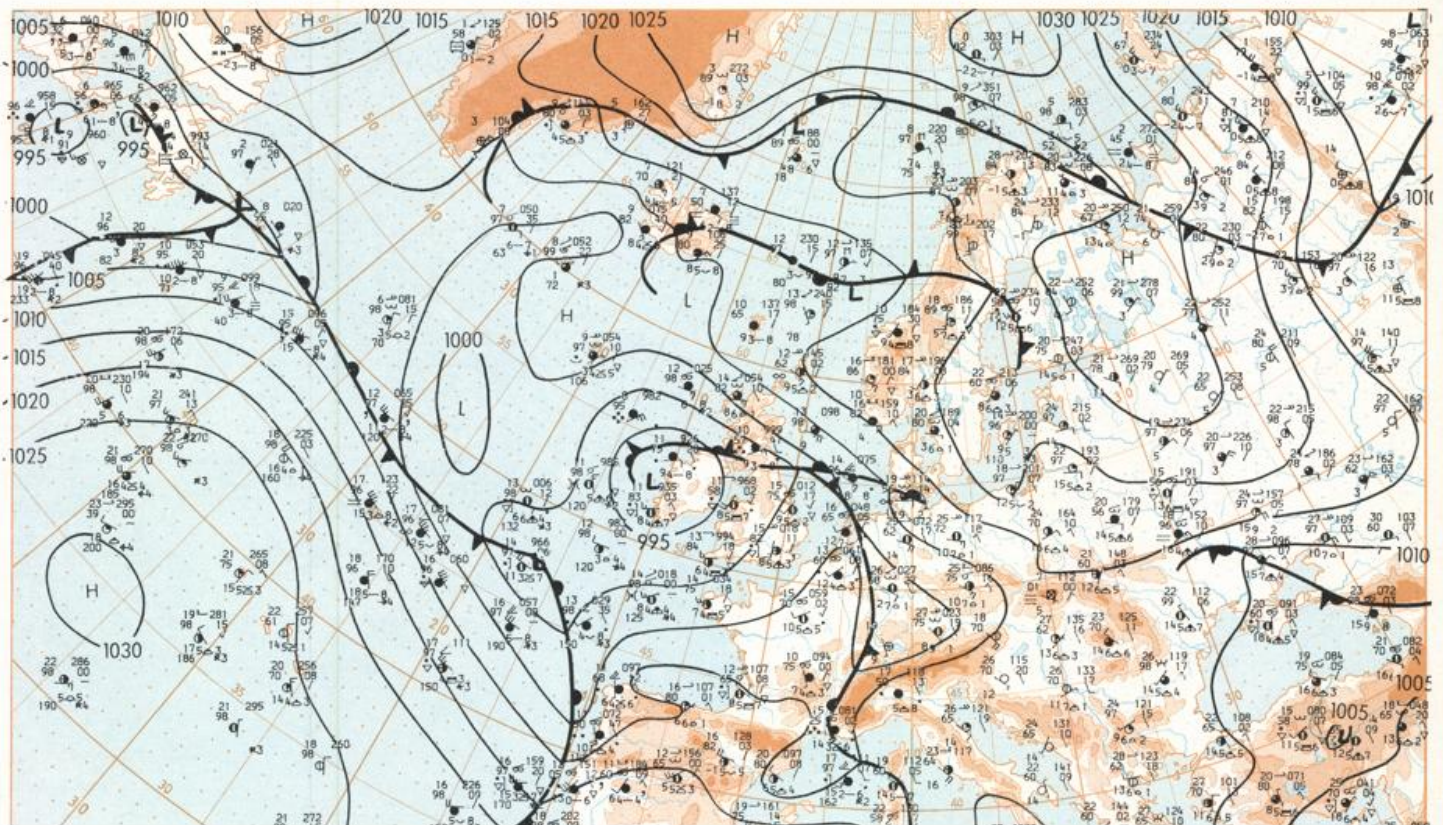


Europäischer Wetterbericht European Meteorological Bulletin Bulletin Météorologique Européen Boletín Meteorológico Europeo

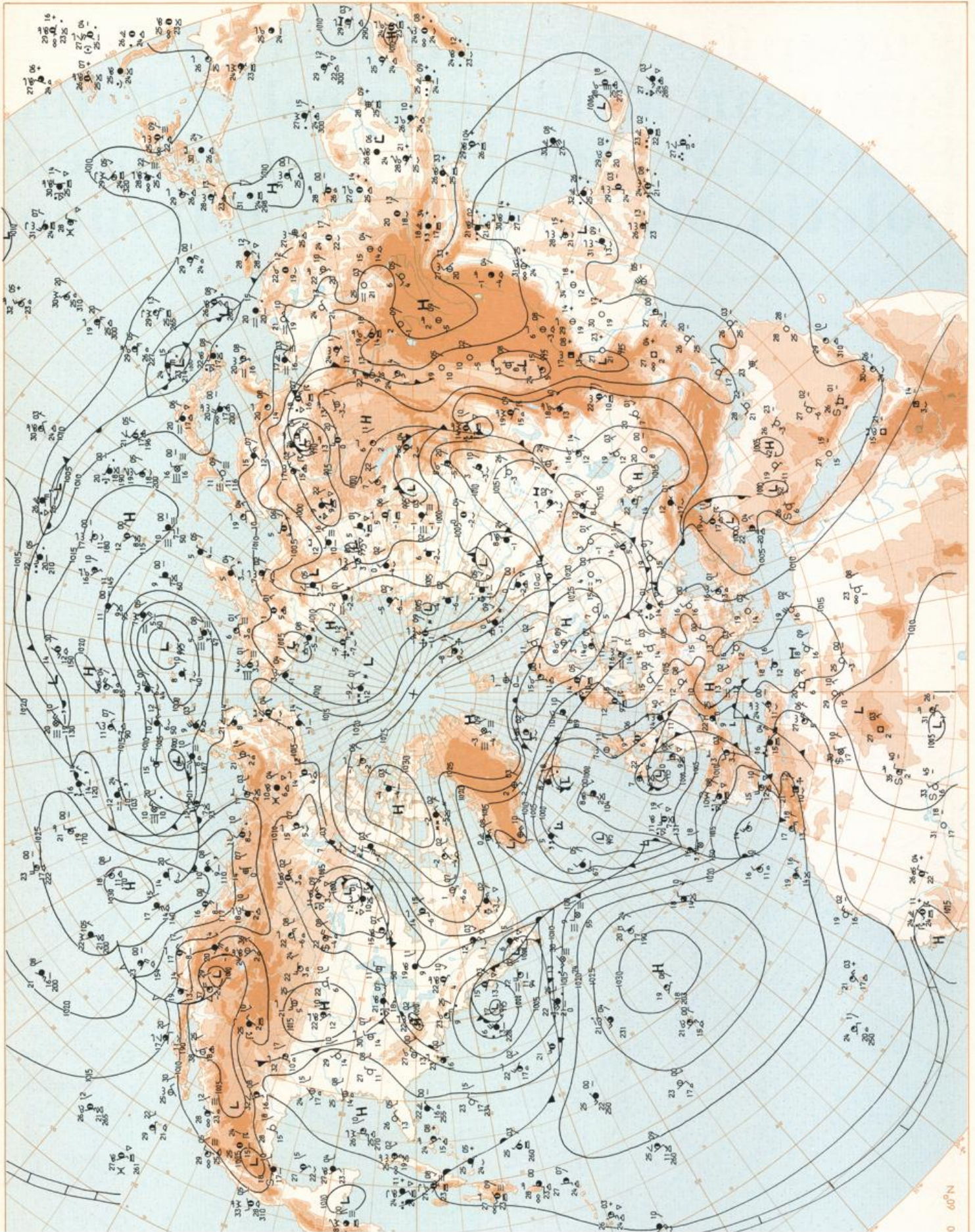
Amtsblatt des Deutschen Wetterdienstes

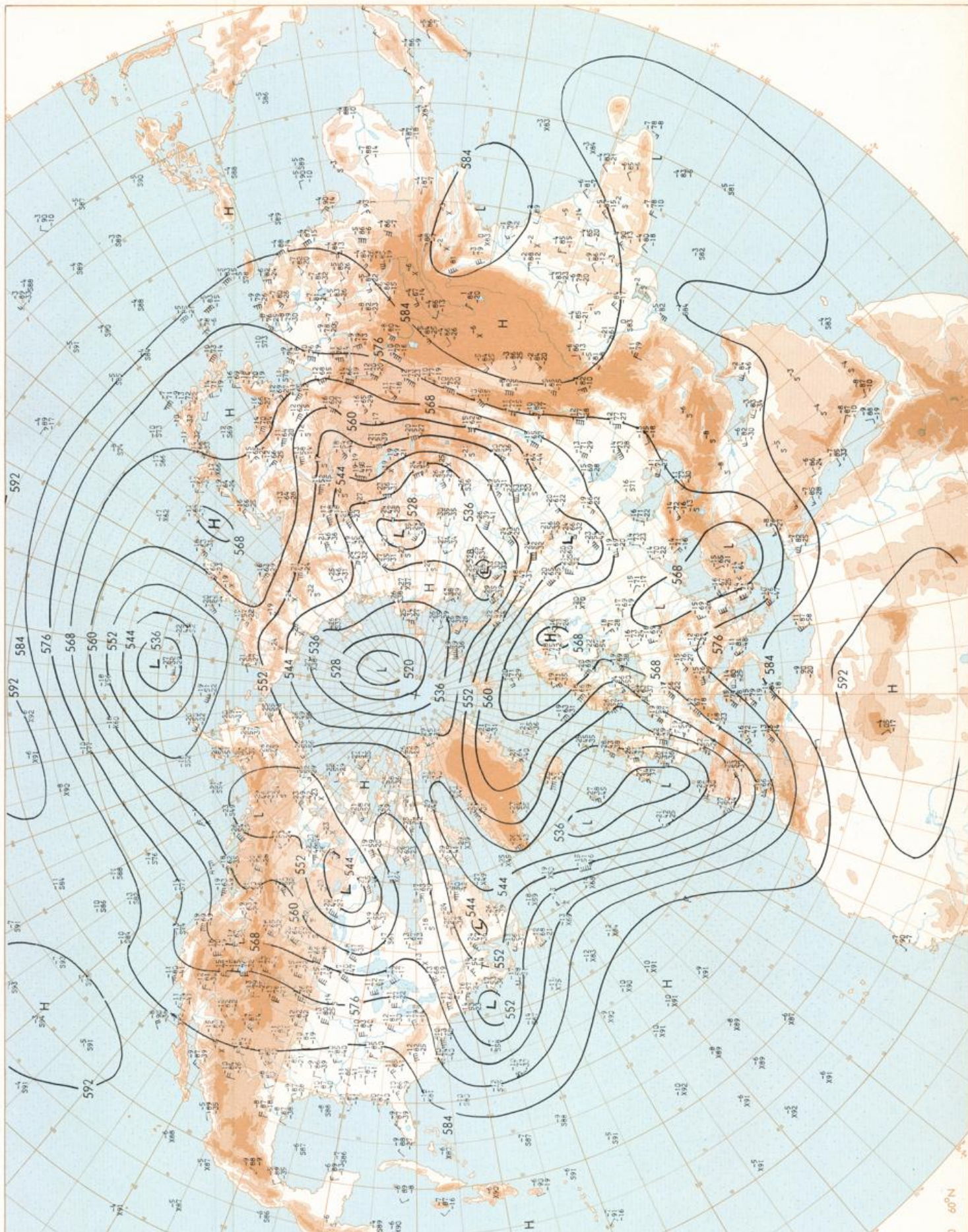
Druck und Verlag: Deutscher Wetterdienst — Zentralamt — D 6050 Offenbach am Main, Frankfurter Straße 135, Tel.: (0611) 80620

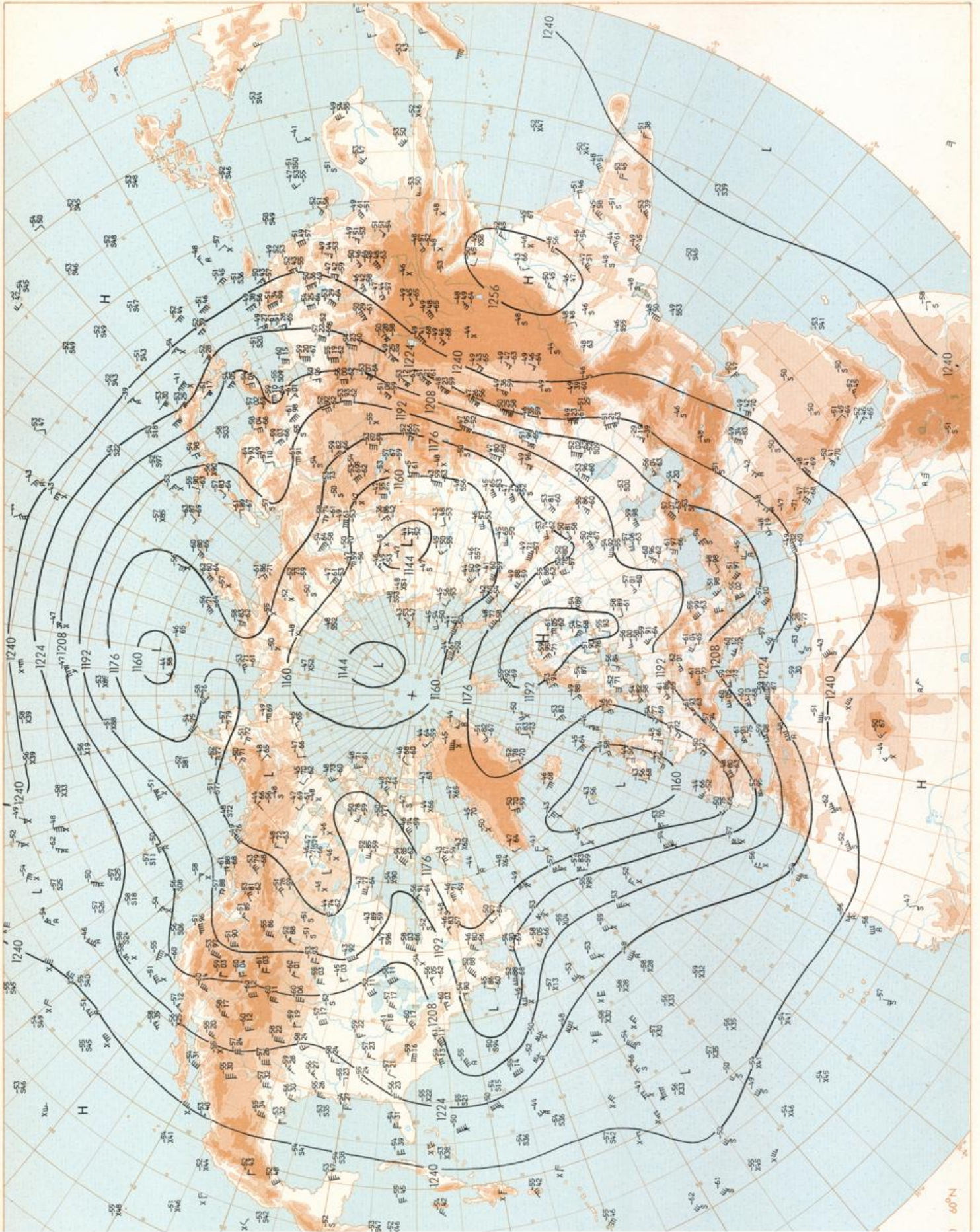
Er erscheint täglich Bezugspreis monatlich 30,00 DM zuzügl. Porto Nachdruck nicht gestattet	Issued daily Monthly price 30,00 DM plus postage All rights reserved	Publié quotidiennement Prix mensuel 30,00 DM plus port Reproduction interdite	Se publica diariamente Precio de suscripción mensual 30,00 DM plus porte Se prohíbe la reproducción
Jahrgang Volume Volume Volumen	Sonntag Sunday Dimanche Domingo	03.06.1984	Nummer Number Número Número
9			155
Inhalt Bodenwetterkarte 12 MGZ Bodenwetterkarte Nordhemisphäre 00 MGZ 500 hPa-Fläche Nordhemisphäre 00 MGZ 200 hPa-Fläche Nordhemisphäre 00 MGZ 100 hPa-Fläche Nordhemisphäre 00 MGZ 850 hPa 00 MGZ, 700 hPa 00 MGZ Relative Topographie 500/1000 hPa 00 MGZ 300 hPa 00 MGZ 24stg. Bodendruckänderung 00 MGZ 24stg. Änderung relative Topographie 500/1000 hPa 00 MGZ Aerologische Diagramme 00 MGZ	Content Surface chart 12 GMT Surface chart northern hemisphere 00 GMT 500 hPa surface northern hemisphere 00 GMT 200 hPa surface northern hemisphere 00 GMT 100 hPa surface northern hemisphere 00 GMT 850 hPa 00 GMT, 700 hPa 00 GMT Thickness chart 500/1000 hPa 00 GMT 300 hPa 00 GMT 24 h surface pressure change 00 GMT 24 h thickness change 500/1000 hPa 00 GMT Aerological diagram 00 GMT	Contenu Carte de surface à 12 TU Carte de surface sur l'hémisphère nord à 00 TU Surface 500 hPa sur l'hémisphère nord à 00 TU Surface 200 hPa sur l'hémisphère nord à 00 TU Surface 100 hPa sur l'hémisphère nord à 00 TU 850 hPa 00 TU, 700 hPa 00 TU Carte d'épaisseur 500/1000 hPa 00 TU 300 hPa 00 TU Variations de pression en 24 h (niveau mer) en hPa à 00 TU Variations d'épaisseur 500/1000 hPa en 24 h 00 TU Diagrammes aérologiques 00 TU	Contenido Análisis en superficie a las 12 T.M.G. Análisis en superficie hemisferio norte a las 00 T.M.G. Topografía de la superficie de 500 hPa hemisferio norte a las 00 T.M.G. Topografía de la superficie de 200 hPa hemisferio norte a las 00 T.M.G. Topografía de la superficie de 100 hPa hemisferio norte a las 00 T.M.G. 850 hPa 00 T.M.G., 700 hPa 00 T.M.G. Relativa 500/1000 hPa 00 T.M.G., 300 hPa 00 T.M.G. Variación de la presión del suelo 24 h en hPa a las 00 T.M.G. Variación de espesor 500/1000 hPa en 24 h 00 T.M.G. Diagramas aerológicos 00 T.M.G.

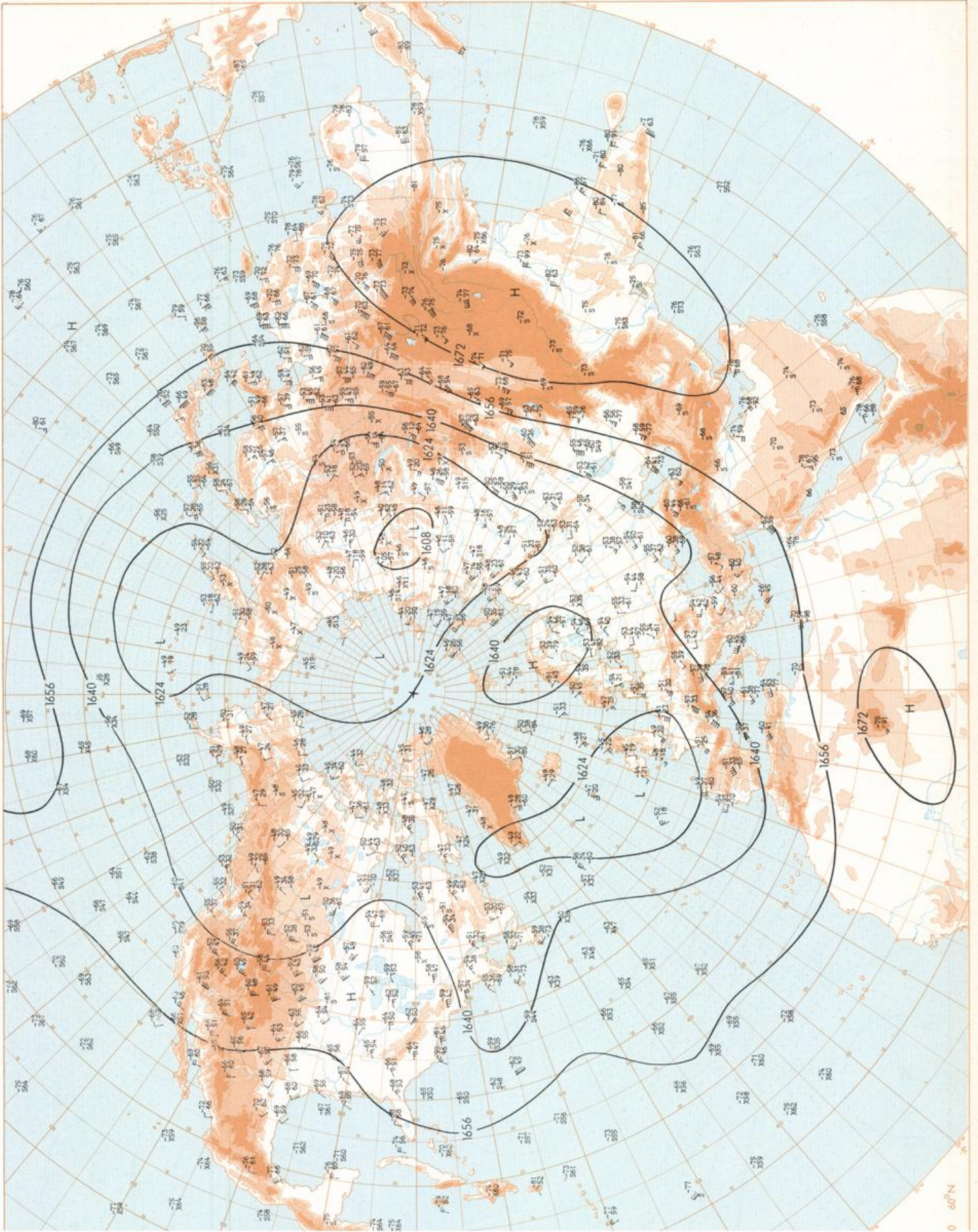


03.06.1984

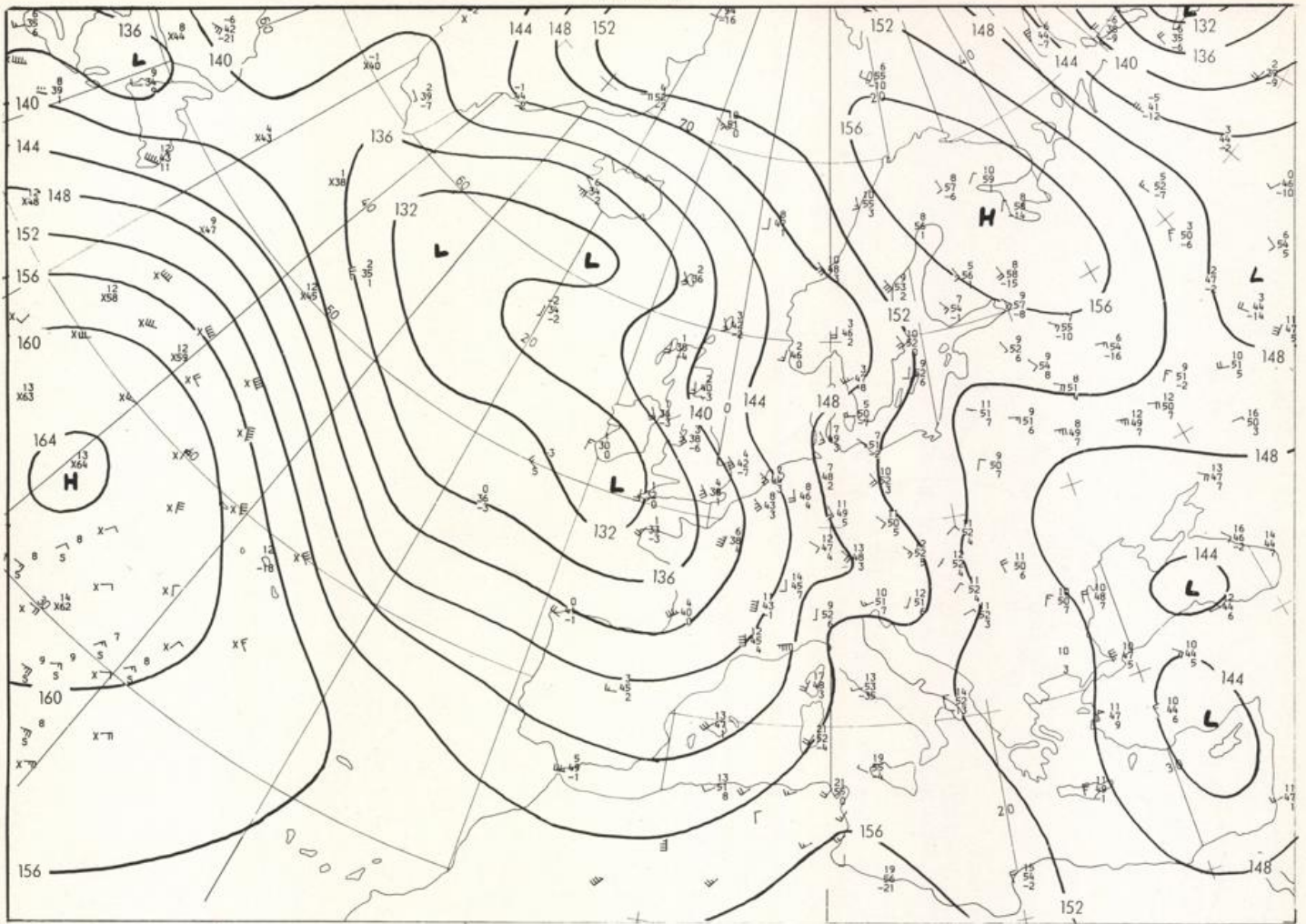






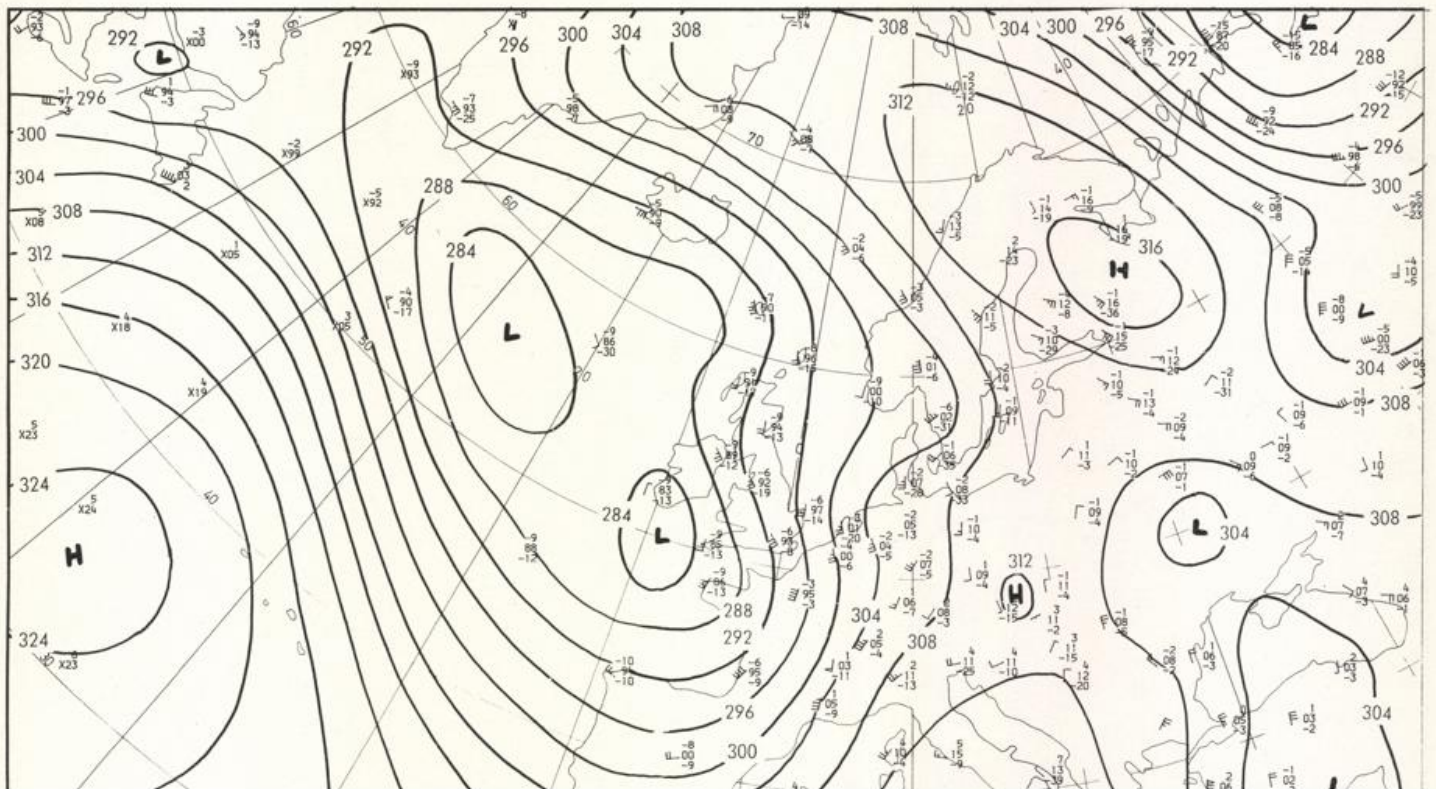


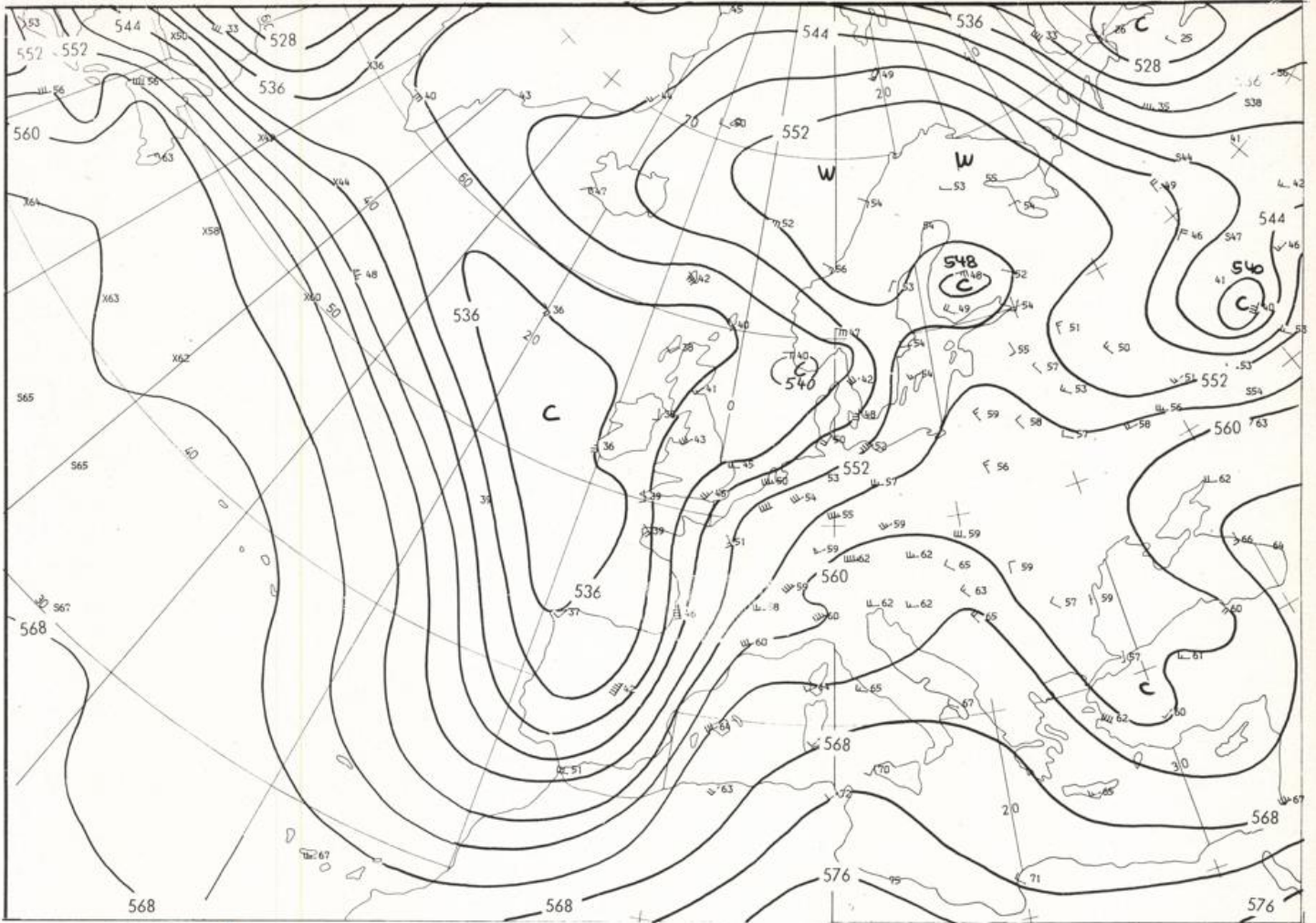
03.06.1984



Stereogr.proj. 1:30 000 000 In 60°N

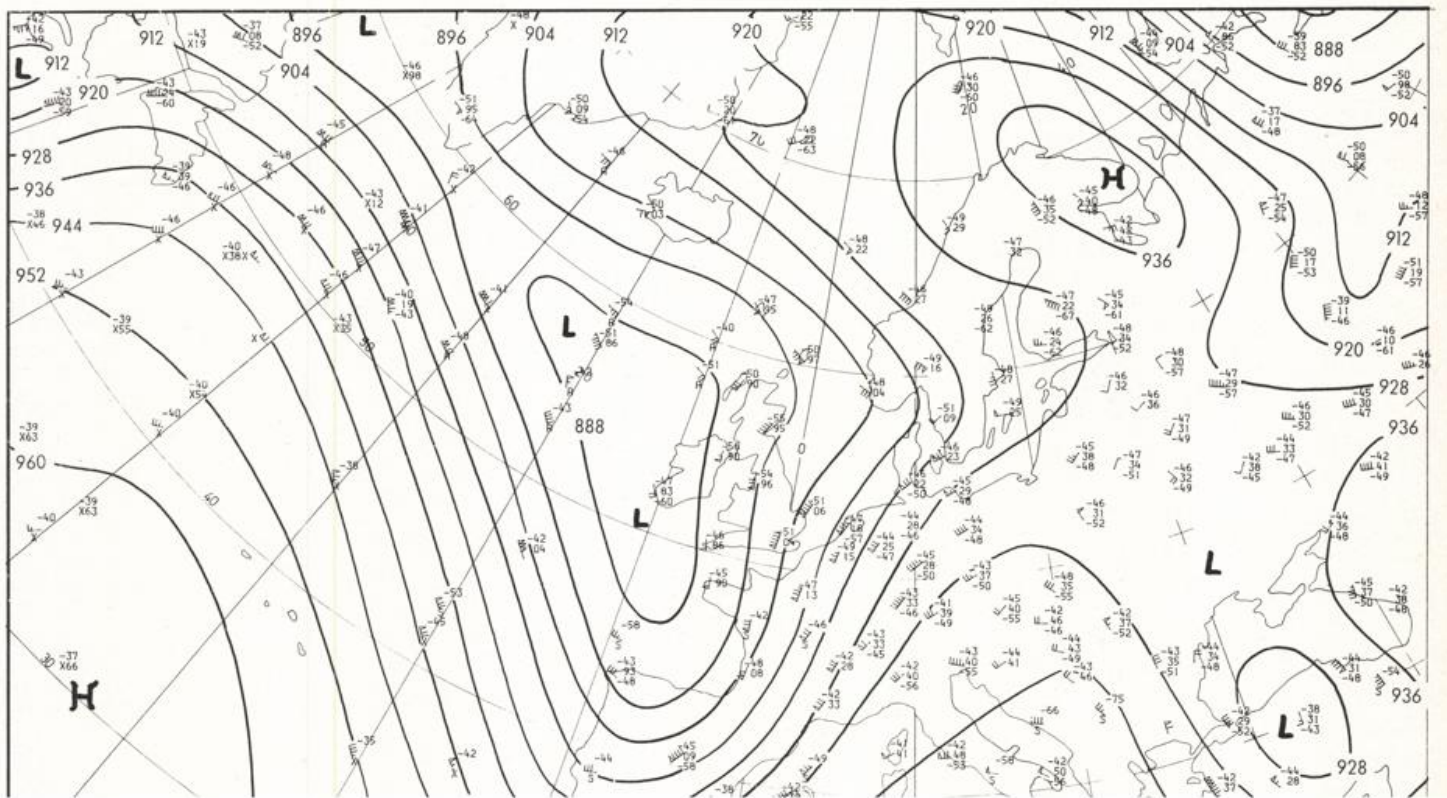
850 hPa 00 GMT



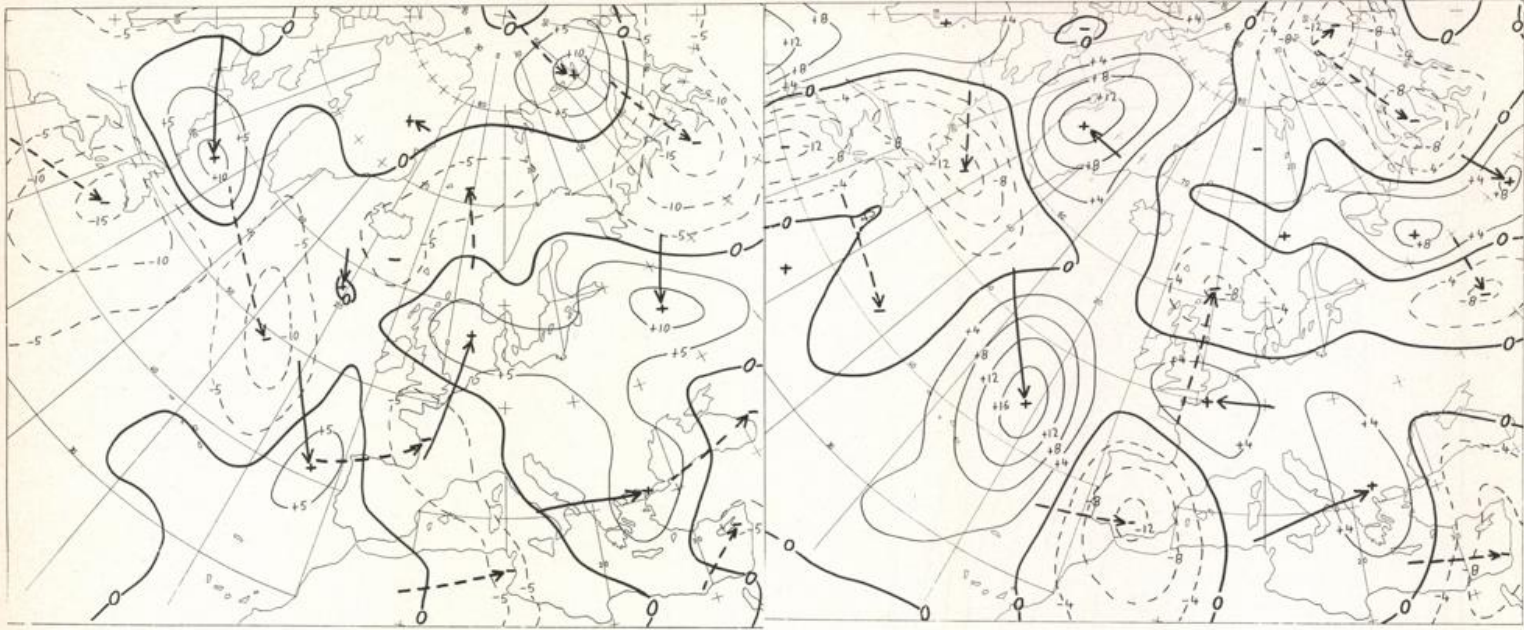


Stereogr. proj. 1:30 000 000 in 60°N

500/1000 hPa 00 GMT



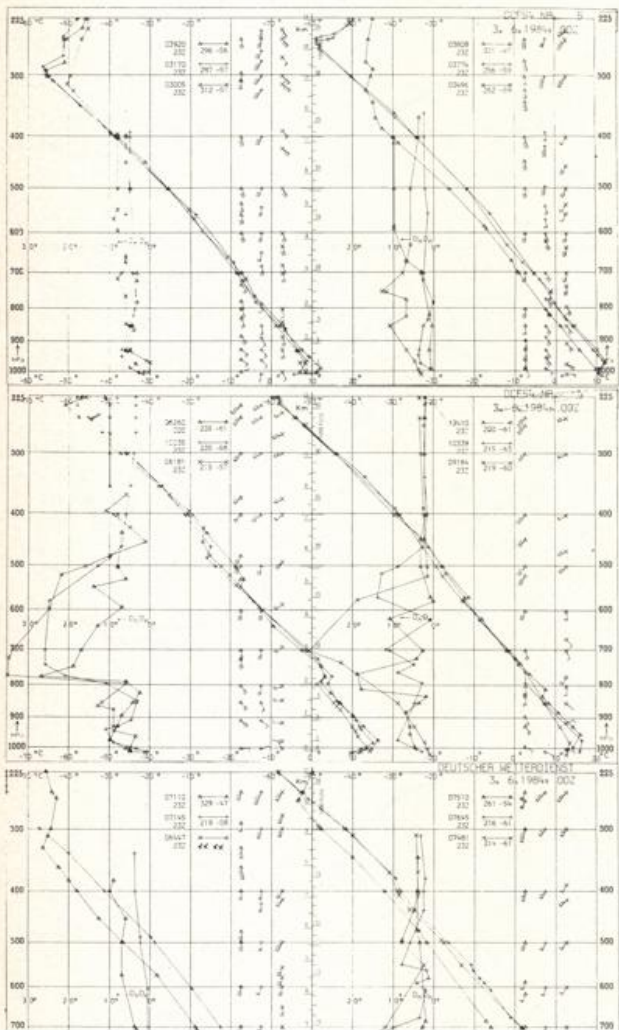
03.06.1984



24 hr surface pressure change OO GMT

Stereogr. proj. 1:60 000 000

24 hr thickness change OO GMT



Aerological Diagrams OO GMT

- 01241 Orland
- 01384 Oslo
- 01415 Stavanger
- 02465 Stockholm
- 02527 Goteborg
- 03005 Lerwick
- 03170 Shanwell
- 03496 Hemsby
- 03774 Crawley
- 03808 Camborne
- 03920 Long Kesh
- 06181 Kobenhavn
- 06260 De Bilt
- 06447 Uccle
- 06610 Payerne
- 07110 Brest
- 07145 Trappes
- 07481 Lyon
- 07510 Bordeaux
- 07645 Nimes
- 09184 Greifswald
- 09393 Lindenberg
- 09548 Meiningen
- 10035 Schlieswig
- 10338 Hannover
- 10410 Essen
- 10739 Stuttgart
- 10868 München-Oberschleißheim
- 11035 Wien
- 11520 Praha-Libus
- 12374 Legionowo
- 12843 Budapest
- 13275 Beograd
- 16044 Udine
- 16080 Milano

