

Europäischer Wetterbericht European Meteorological Bulletin Bulletin Météorologique Européen Boletín Meteorológico Europeo

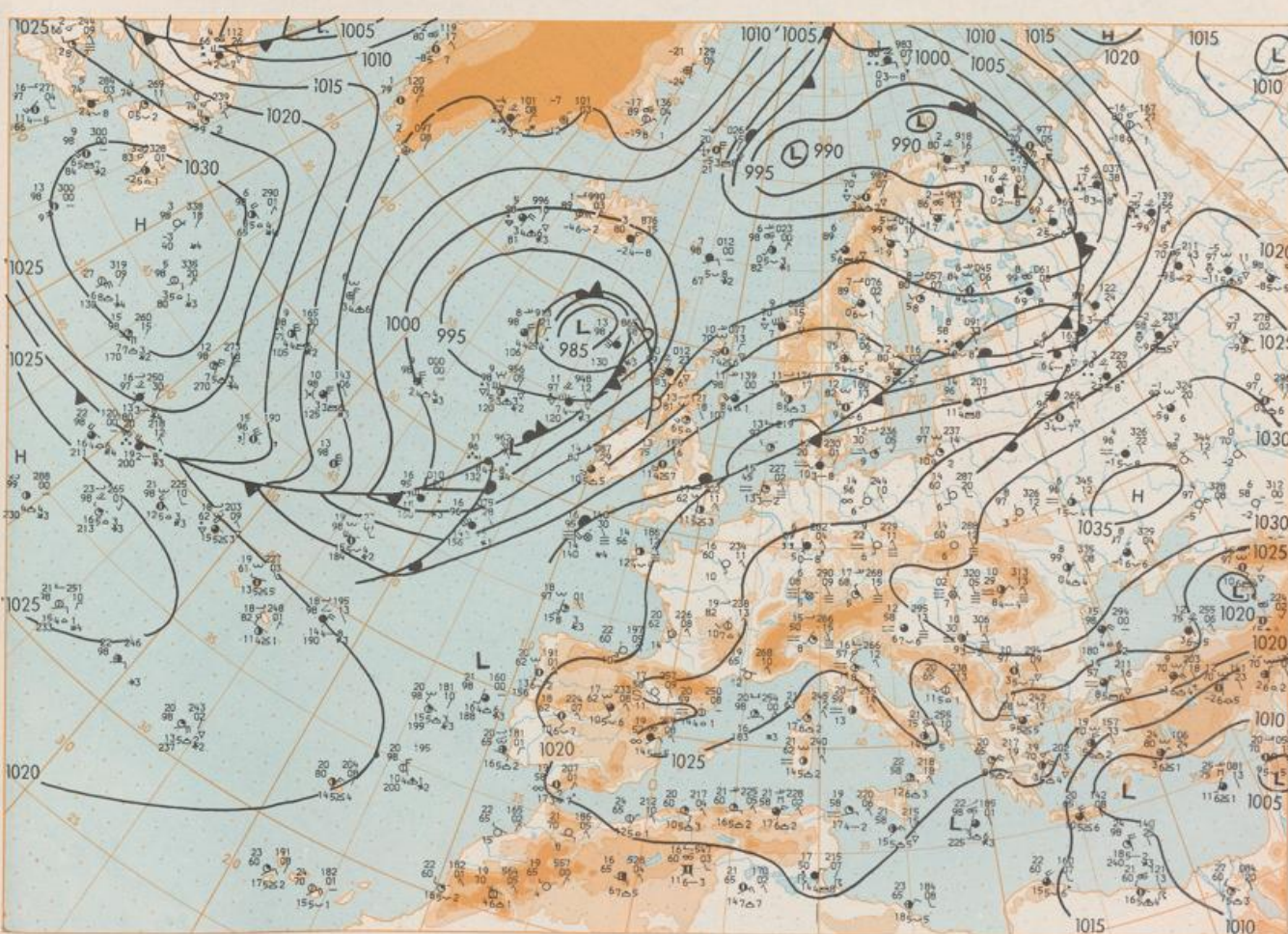
Amtsblatt des Deutschen Wetterdienstes

Druck und Verlag: Deutscher Wetterdienst — Zentralamt — D 6050 Offenbach am Main, Frankfurter Straße 135, Tel.: (06 9) 80620

| | | | |
|---|--|------------------------------------|--|
| Er erscheint täglich | Issued daily | Publié quotidiennement | Se publica diariamente |
| Bezugspreis monatlich 30,00 DM zuzügl. Porto | Monthly price 30,00 DM plus postage | Prix mensuel 30,00 DM plus port | Precio de suscripción mensual 30,00 DM plus porte |
| Nachdruck nicht gestattet | All rights reserved | Reproduction interdite | Se prohíbe la reproducción |

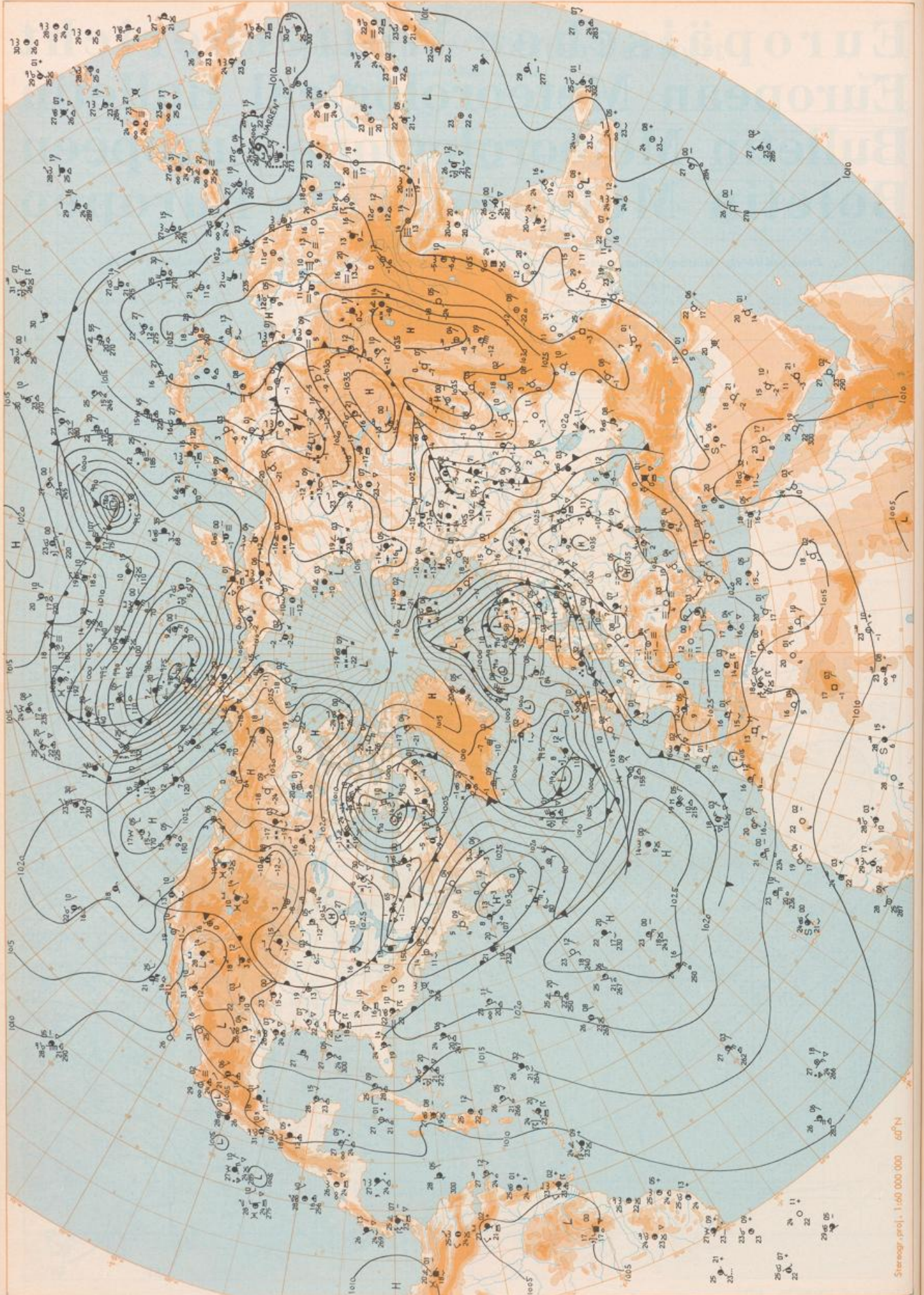
| | | | | | |
|---|---|--|------------|--------------------------------------|-----|
| Jahrgang Volume Volume Volumen | 9 | Mittwoch Wednesday Mercredi Miércoles | 31.10.1984 | Nummer Number Número Número | 305 |
|---|---|--|------------|--------------------------------------|-----|

| Inhalt | Content | Contenu | Contenido |
|--|--|--|---|
| Bodenwetterkarte 12 MGZ | Surface chart 12 GMT | Carte de surface à 12 TU | Análisis en superficie a las 12 T.M.G. |
| Bodenwetterkarte Nordhemisphäre 00 MGZ | Surface chart northern hemisphere 00 GMT | Carte de surface sur l'hémisphère nord à 00 TU | Análisis en superficie hemisferio norte a las 00 T.M.G. |
| 300 hPa-Fläche Nordhemisphäre 00 MGZ | 300 hPa surface northern hemisphere 00 GMT | Surface 300 hPa sur l'hémisphère nord à 00 TU | Topografía de la superficie de 300 hPa hemisferio norte a las 00 T.M.G. |
| 200 hPa-Fläche Nordhemisphäre 00 MGZ | 200 hPa surface northern hemisphere 00 GMT | Surface 200 hPa sur l'hémisphère nord à 00 TU | Topografía de la superficie de 200 hPa hemisferio norte a las 00 T.M.G. |
| 100 hPa-Fläche Nordhemisphäre 00 MGZ | 100 hPa surface northern hemisphere 00 GMT | Surface 100 hPa sur l'hémisphère nord à 00 TU | Topografía de la superficie de 100 hPa hemisferio norte a las 00 T.M.G. |
| 830 hPa 00 MGZ, 700 hPa 00 MGZ | 830 hPa 00 GMT, 700 hPa 00 GMT | 830 hPa 00 TU, 700 hPa 00 TU | 830 hPa 00 T.M.G., 700 hPa 00 T.M.G. |
| Relative Topographie 300/1000 hPa 00 MGZ | Thickness chart 300/1000 hPa 00 GMT | Carte d'épaisseur 300/1000 hPa 00 TU | Relieve 300/1000 hPa 00 T.M.G. |
| 300 hPa 00 MGZ | 300 hPa 00 GMT | 300 hPa 00 TU | 300 hPa 00 T.M.G. |
| 24stünd. Bodenruckänderung 00 MGZ | 24 hr surface pressure change 00 GMT | Variations de pression en 24 h (niveau mer) en hPa à 00 TU | Velocidad de la presión del suelo 24 h en hPa a las 00 T.M.G. |
| 24stünd. Änderung relative Topographie 300/1000 hPa 00 MGZ | 24 hr thickness change 300/1000 hPa 00 GMT | Variations d'épaisseur 300/1000 hPa en 24 h 00 TU | Velocidad de espesor 300/1000 hPa en 24 h 00 T.M.G. |
| Aerologische Diagramme 00 MGZ | Aerological diagrams 00 GMT | Diagrammes aérologiques 00 TU | Diagramas aerológicos 00 T.M.G. |

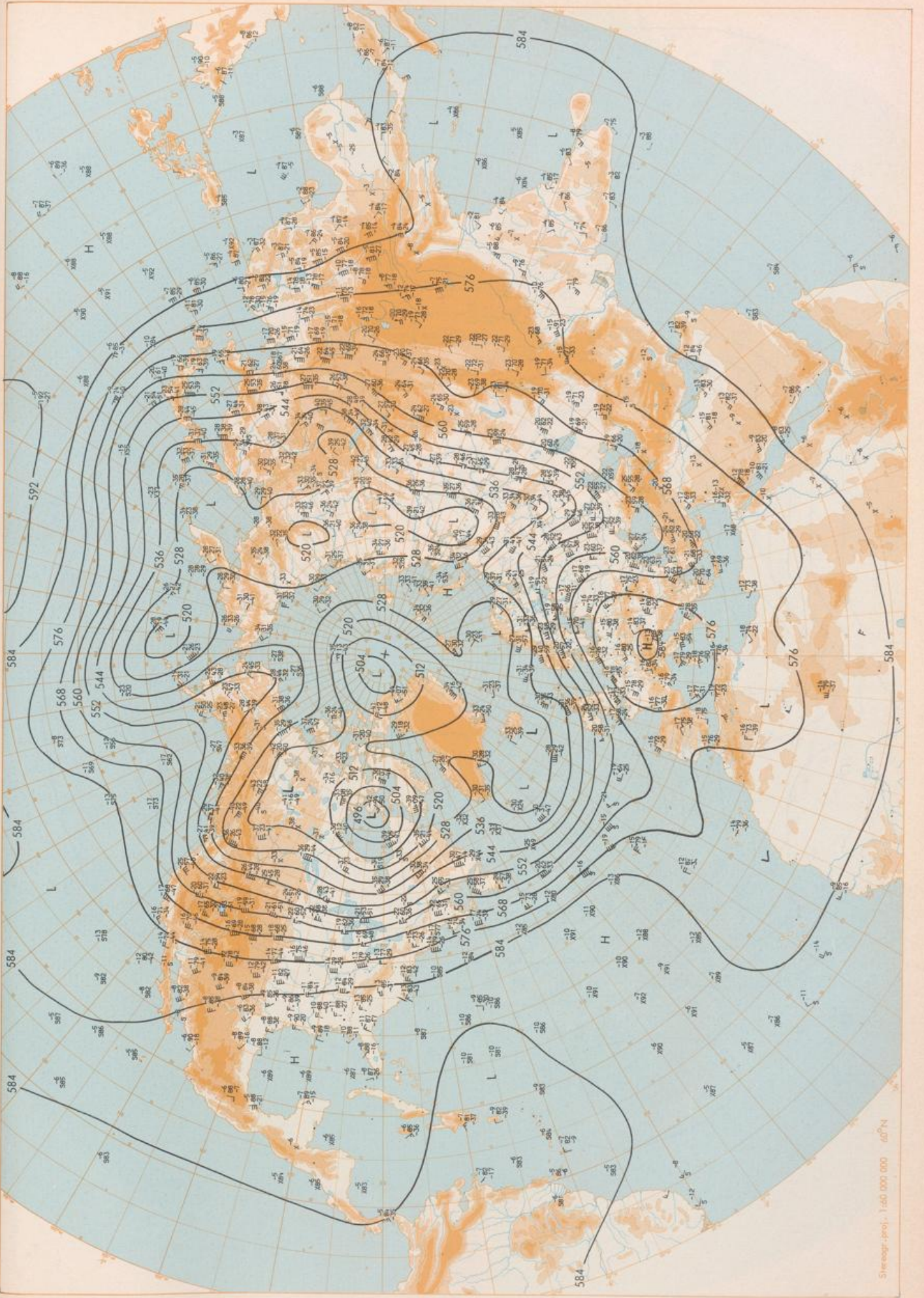


Stereogr. proj. 1:30 000 000 60°N

Surface chart 12 GMT



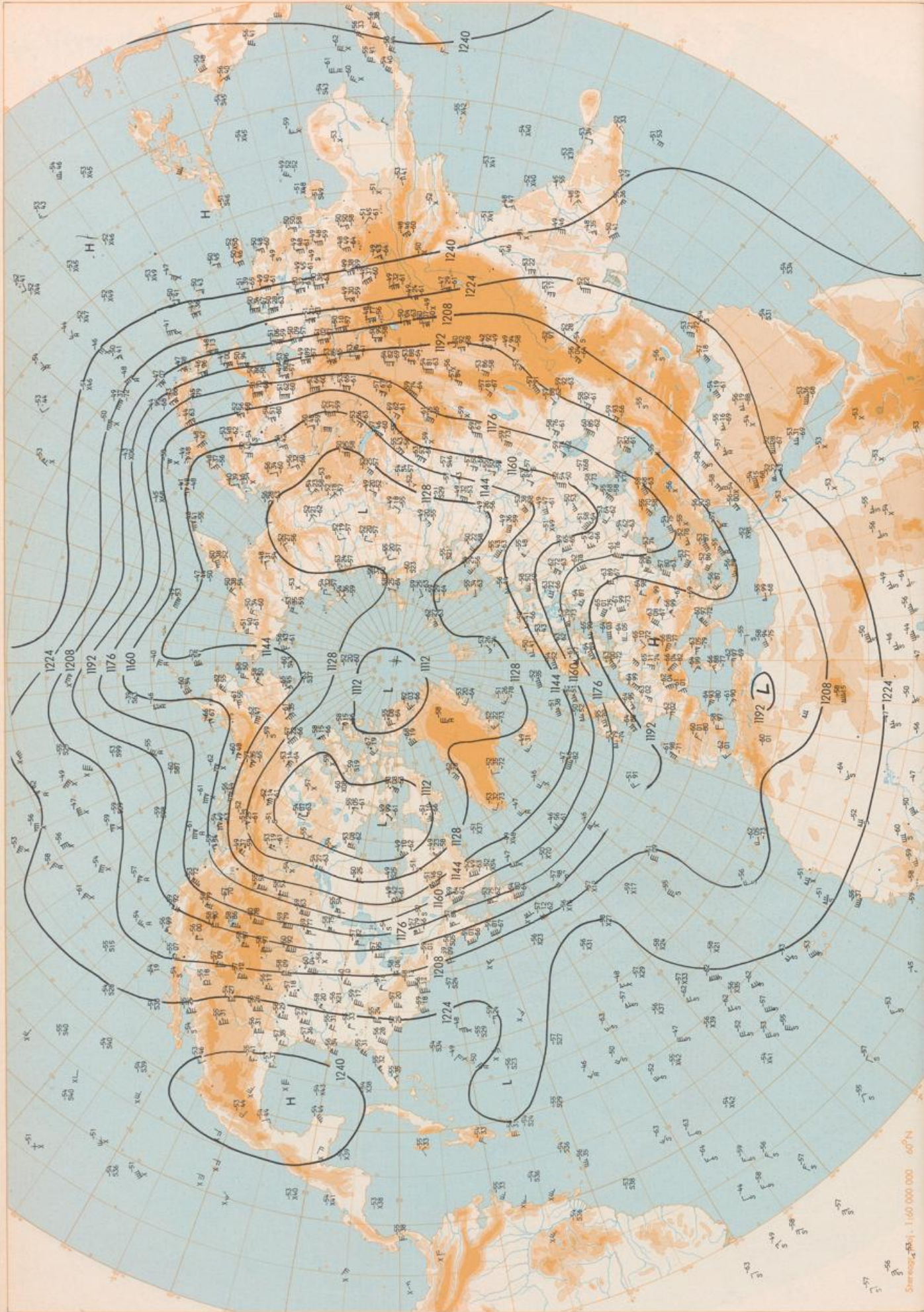
Surface chart 00 GMT



500 hPa 00 GMT

Stereogr. proj. 1:60 000 000 60°N

Stereogr. proj. 1:60 000 000 60°N



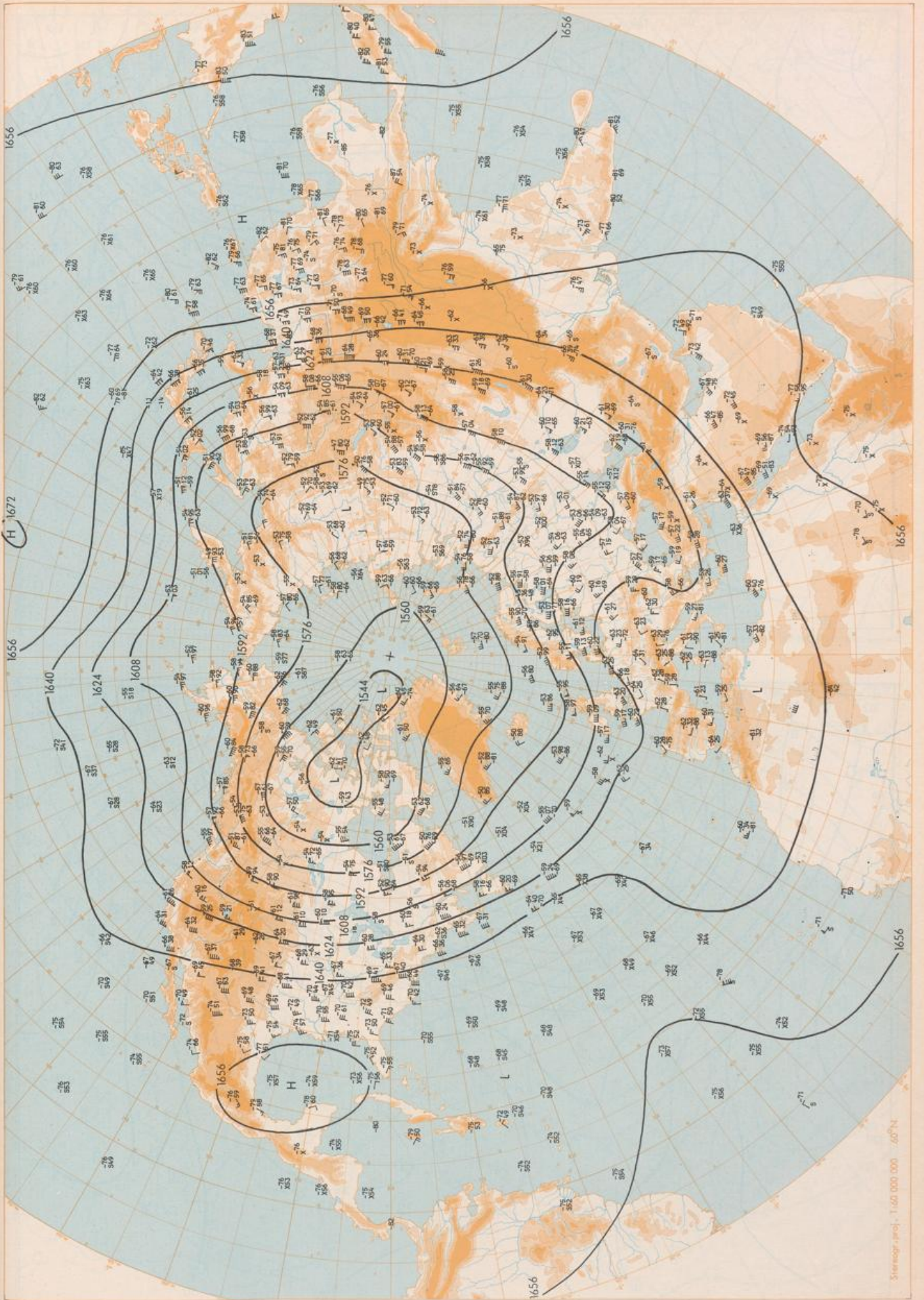
200 hPa 00 GMT

Scale 1:1,600,000 60°N

1656

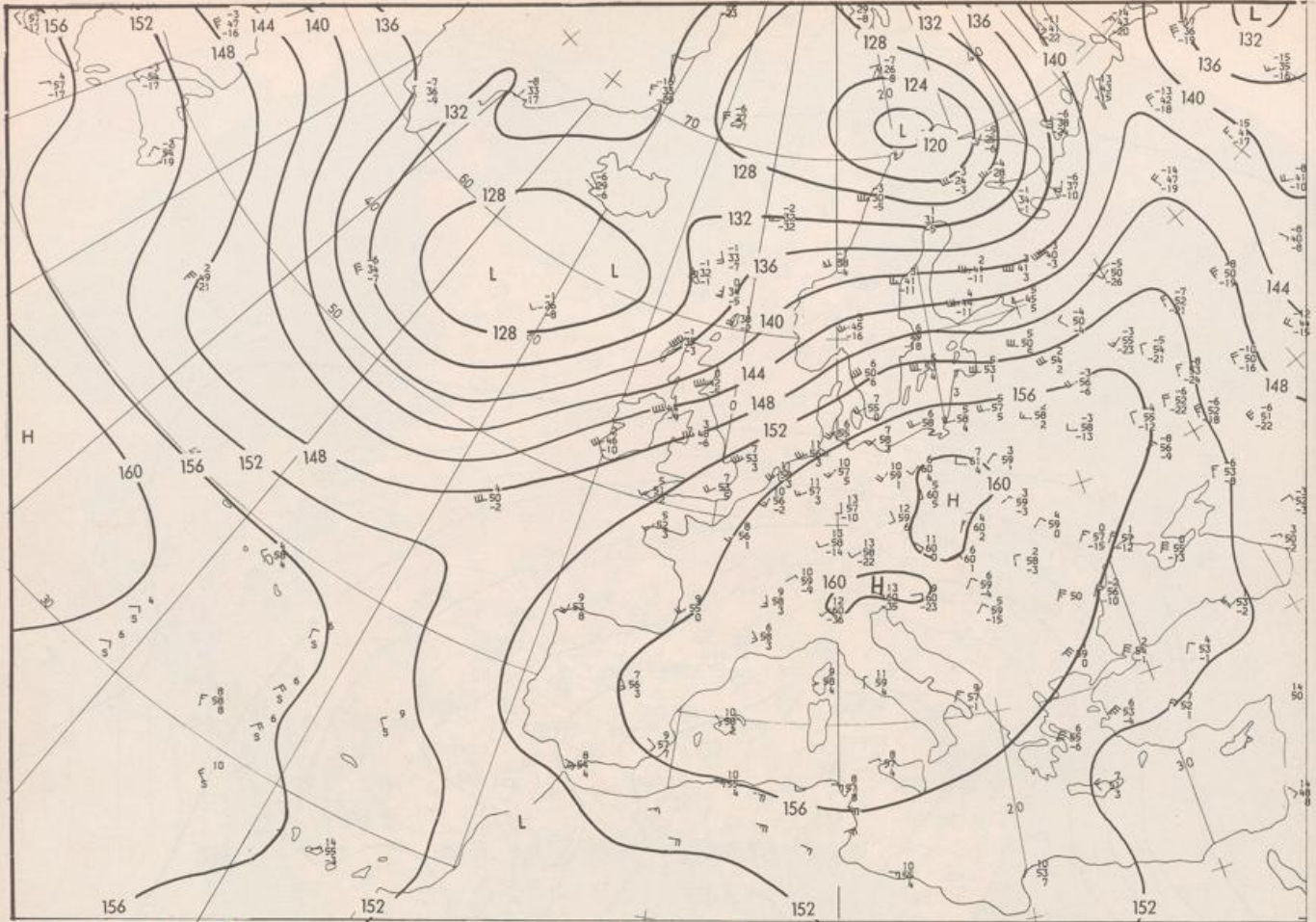
H 1672

1656



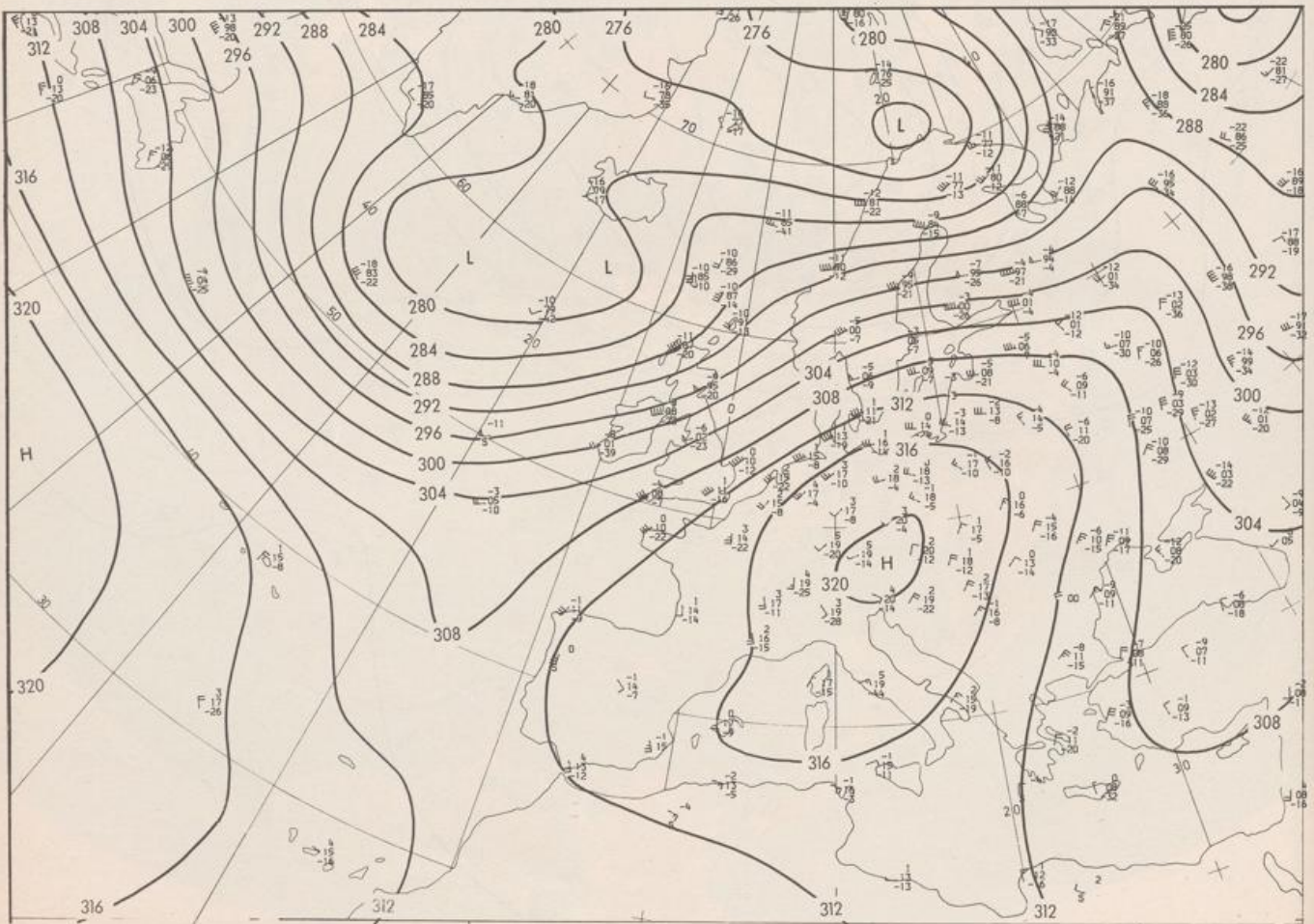
100 hPa 00 GMT

Stereogr. proj., 1:1,600,000.000 60°N

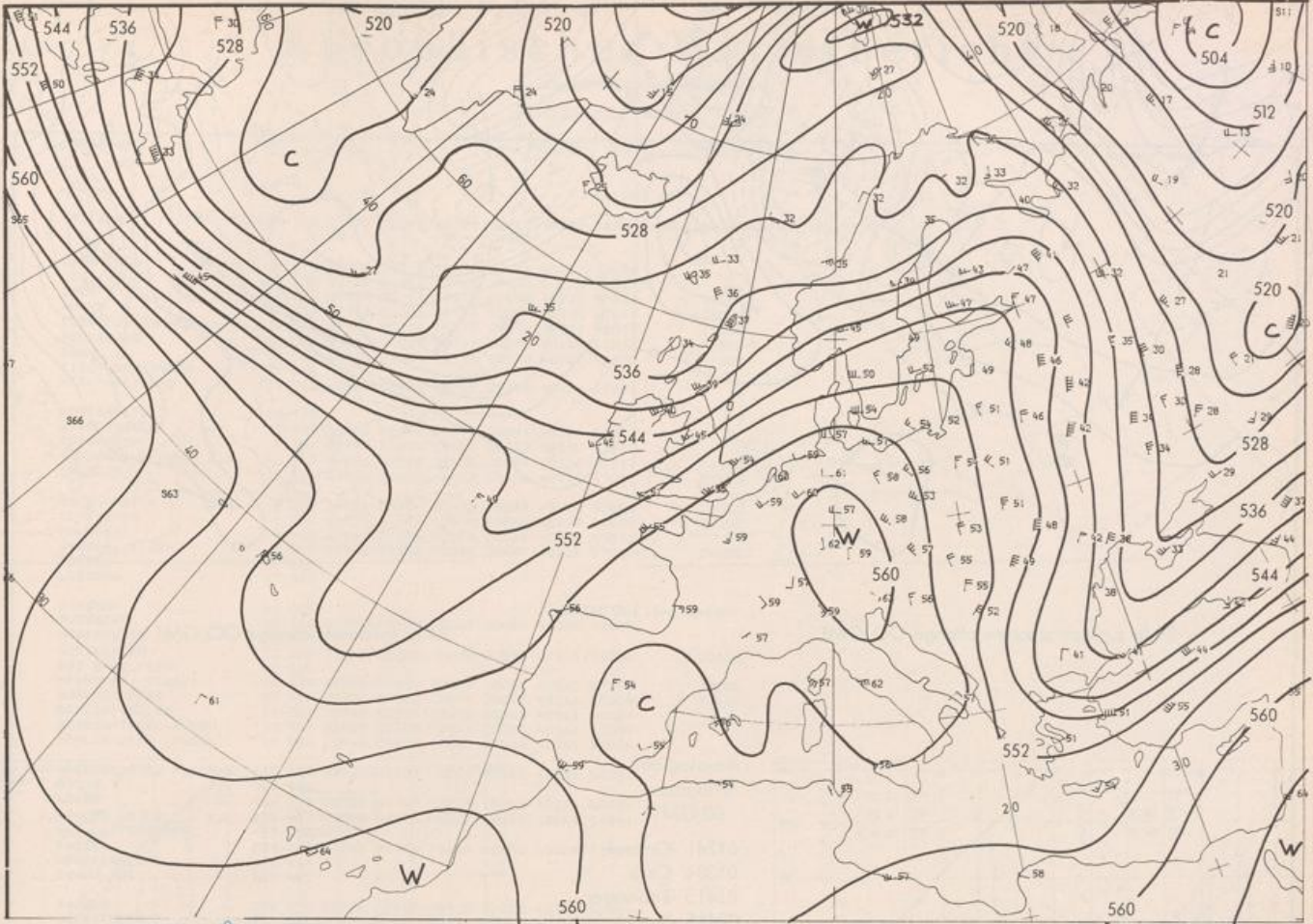


Stereogr. proj. 1:30 000 000 in 60°N

850 hPa 00 GMT

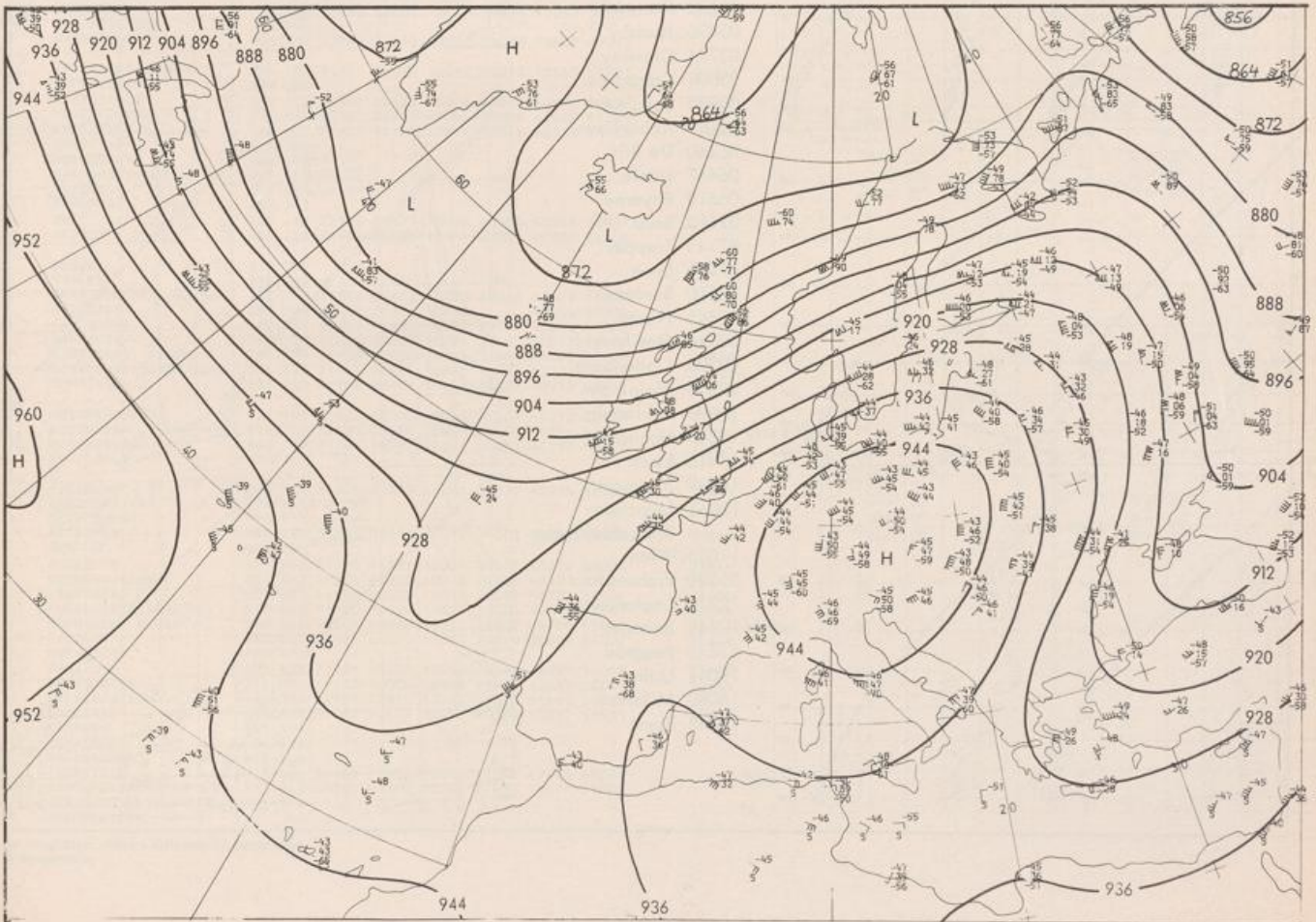


700 hPa 00 GMT

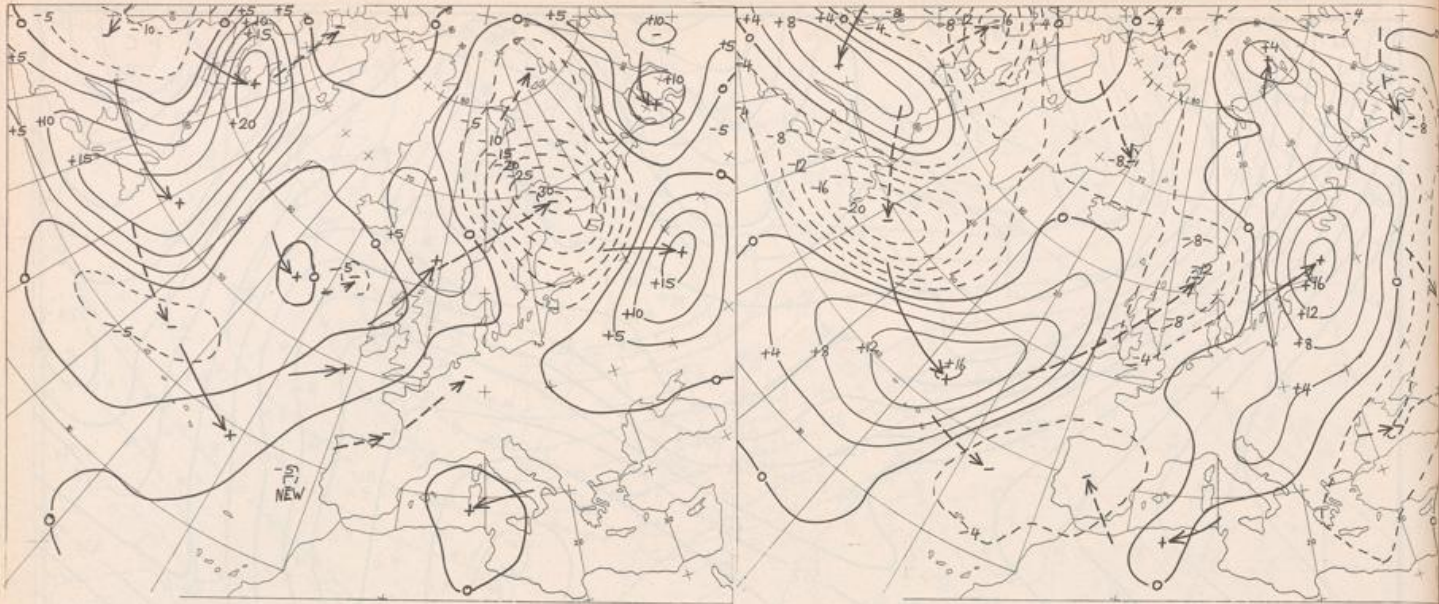


Stereogr. proj. 1:30 000 000 in 60°N

500/1000 hPa 00 GMT



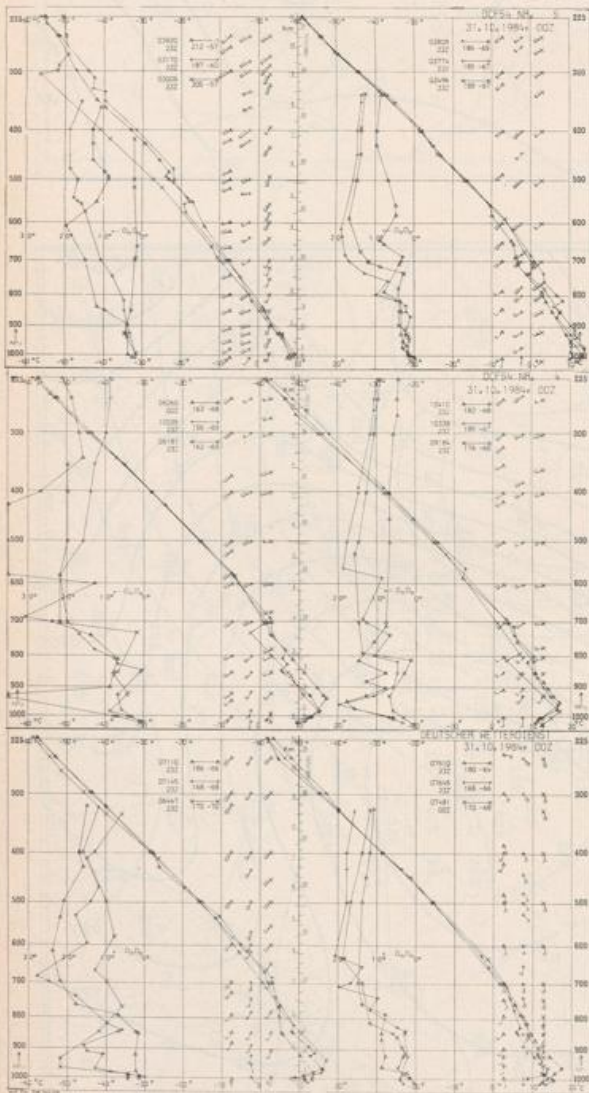
300 hPa 00 GMT



24 hr surface pressure change 00 GMT

Stereogr.-proj. 1:60 000 000

24 hr thickness change 00 GMT



Aerological Diagrams 00 GMT

- 01241 Orland
- 01384 Oslo
- 01415 Stavanger
- 02465 Stockholm
- 02527 Goteborg
- 03005 Lerwick
- 03170 Shanwell
- 03496 Hemsby
- 03774 Crawley
- 03808 Camborne
- 03920 Long Kesh
- 06181 Kobenhavn
- 06260 De Bilt
- 06447 Uccle
- 06610 Payeme
- 07110 Brest
- 07145 Trappes
- 07481 Lyon
- 07510 Bordeaux
- 07645 Nimes
- 09184 Greifswald
- 09393 Lindenberg
- 09548 Meiningen
- 10035 Schleswig
- 10338 Hannover
- 10410 Essen
- 10739 Stuttgart
- 10868 München-Oberschleißheim
- 11035 Wien
- 11520 Praha-Libus
- 12374 Legionowo
- 12843 Budapest
- 13275 Beograd
- 16044 Udine
- 16080 Milano
- 16242 Roma

