

# Europäischer Wetterbericht European Meteorological Bulletin Bulletin Météorologique Européen Boletín Meteorológico Europeo

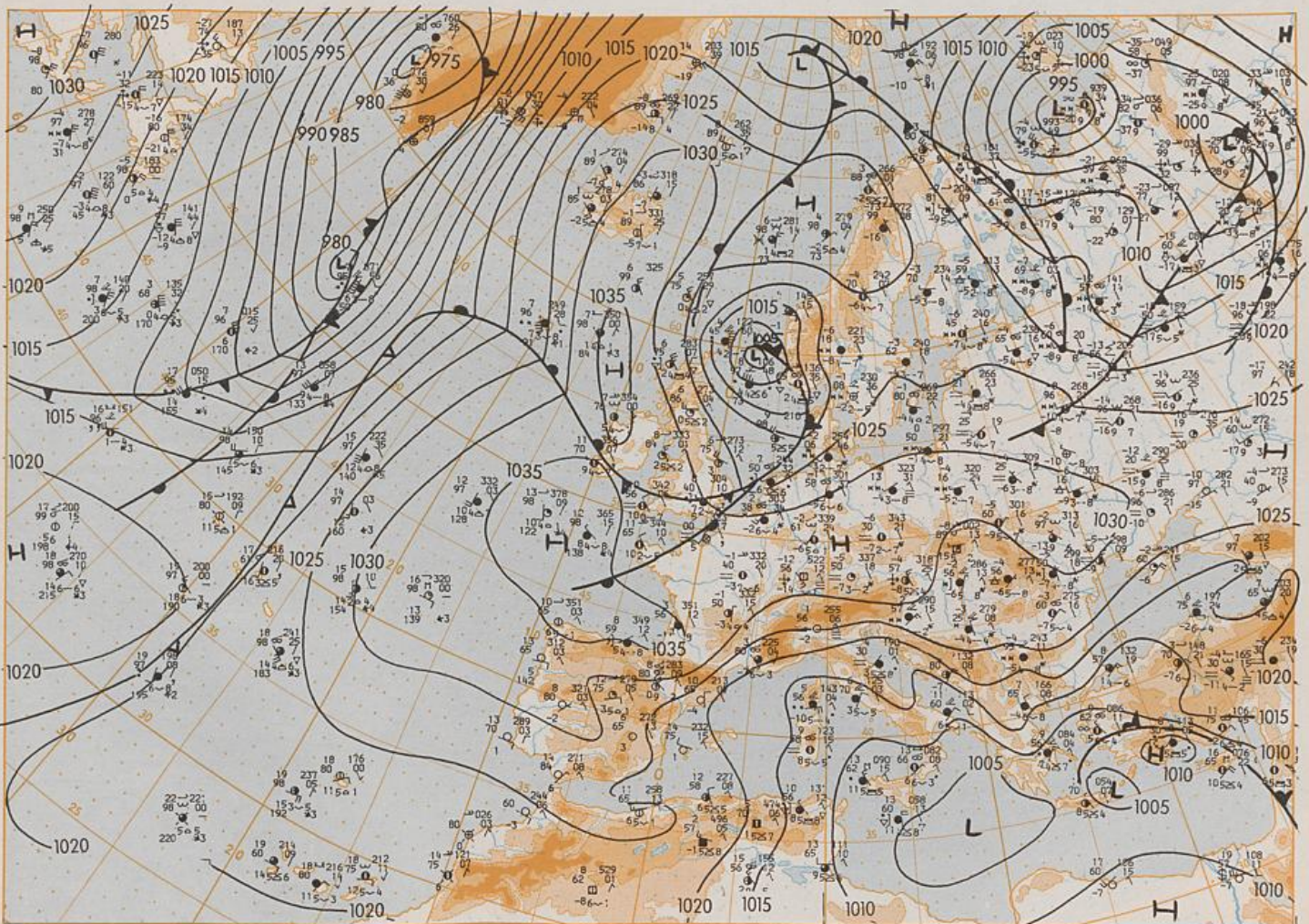
Amtsblatt des Deutschen Wetterdienstes

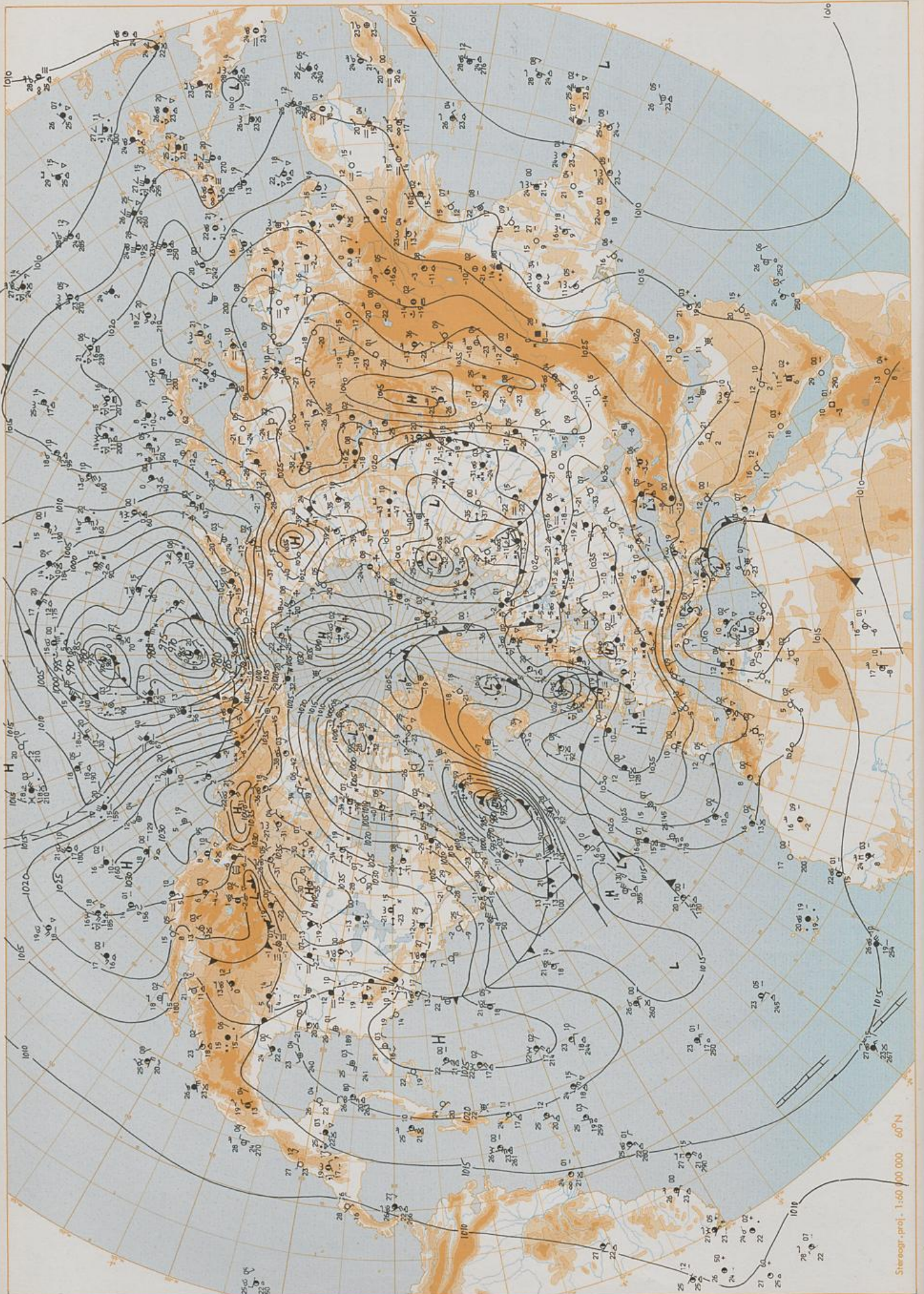
Druck und Verlag: Deutscher Wetterdienst — Zentralamt — D 6050 Offenbach am Main, Frankfurter Straße 135, Tel.: (06 9) 80620

Erscheint täglich	Issued daily	Publié quotidiennement	Se publica diariamente
Bezugspreis monatlich 30,00 DM zuzügl. Porto	Monthly price 30,00 DM plus postage	Prix mensuel 30,00 DM plus port	Precio de suscripción mensual 30,00 DM plus porte
Nachdruck nicht gestattet	All rights reserved	Reproduction interdite	Se prohíbe la reproducción

Jahrgang Volume Volume Volumen	9	Montag Monday Lundi Lunes	31.12.1984	Nummer Number Número Número	366
---	---	------------------------------------	------------	--------------------------------------	-----

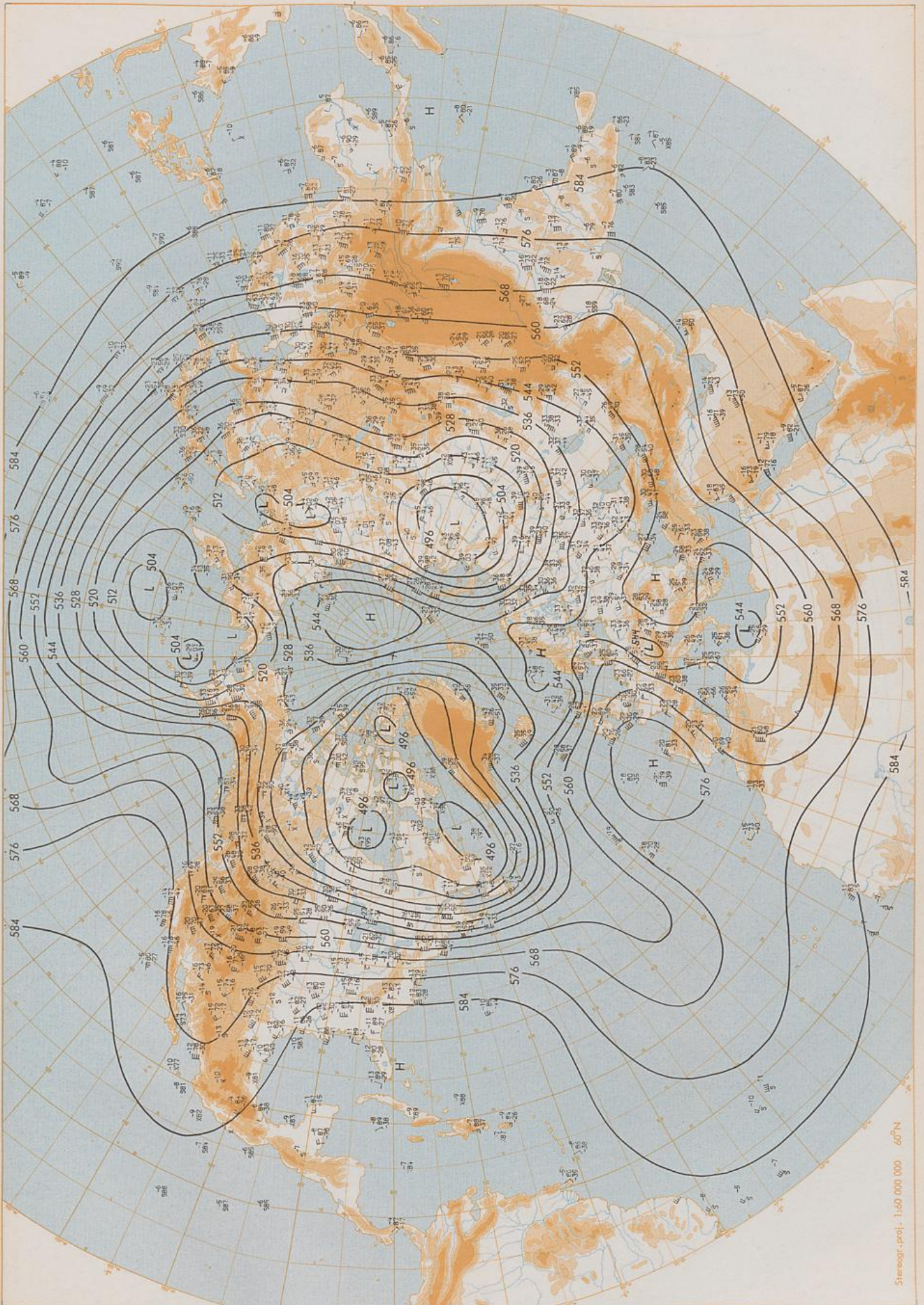
Inhalt	Content	Contenu	Contenido
Bodenwetterkarte 12 MGZ	Surface chart 12 GMT	Carte de surface à 12 TU	Análisis en superficie a las 12 T.M.G.
Bodenwetterkarte Nordhemisphäre 00 MGZ	Surface chart northern hemisphere 00 GMT	Carte de surface sur l'hémisphère nord à 00 TU	Análisis en superficie hemisferio norte a las 00 T.M.G.
500 hPa-Fläche Nordhemisphäre 00 MGZ	500 hPa surface northern hemisphere 00 GMT	Surface 500 hPa sur l'hémisphère nord à 00 TU	Topografía de la superficie de 500 hPa hemisferio norte a las 00 T.M.G.
200 hPa-Fläche Nordhemisphäre 00 MGZ	200 hPa surface northern hemisphere 00 GMT	Surface 200 hPa sur l'hémisphère nord à 00 TU	Topografía de la superficie de 200 hPa hemisferio norte a las 00 T.M.G.
100 hPa-Fläche Nordhemisphäre 00 MGZ	100 hPa surface northern hemisphere 00 GMT	Surface 100 hPa sur l'hémisphère nord à 00 TU	Topografía de la superficie de 100 hPa hemisferio norte a las 00 T.M.G.
850 hPa 00 MGZ, 700 hPa 00 MGZ	850 hPa 00 GMT, 700 hPa 00 GMT	850 hPa 00 TU, 700 hPa 00 TU	850 hPa 00 T.M.G., 700 hPa 00 T.M.G.
Relative Topographie 500/1000 hPa 00 MGZ	Thickness chart 500/1000 hPa 00 GMT	Carte d'épaisseur 500/1000 hPa 00 TU	Relativo 500/1000 hPa 00 T.M.G.
300 hPa 00 MGZ	300 hPa 00 GMT	300 hPa 00 TU	300 hPa 00 T.M.G.
24stündig Bodendruckänderung 00 MGZ	24 hr surface pressure change 00 GMT	Variations de pression en 24 h (niveau mer) en hPa à 00 TU	Variación de la presión del suelo 24 h en hPa a las 00 T.M.G.
24stündig Änderung relative Topographie 500/1000 hPa 00 MGZ	24 hr thickness change 500/1000 hPa 00 GMT	Variations d'épaisseur 500/1000 hPa en 24 h 00 TU	Variación de espesor 500/1000 hPa en 24 h 00 T.M.G.
Aerologische Diagramme 00 MGZ	Aerological diagrams 00 GMT	Diagrammes aérologiques 00 TU	Diagramas aerológicos 00 T.M.G.





Surface chart 00 GMT

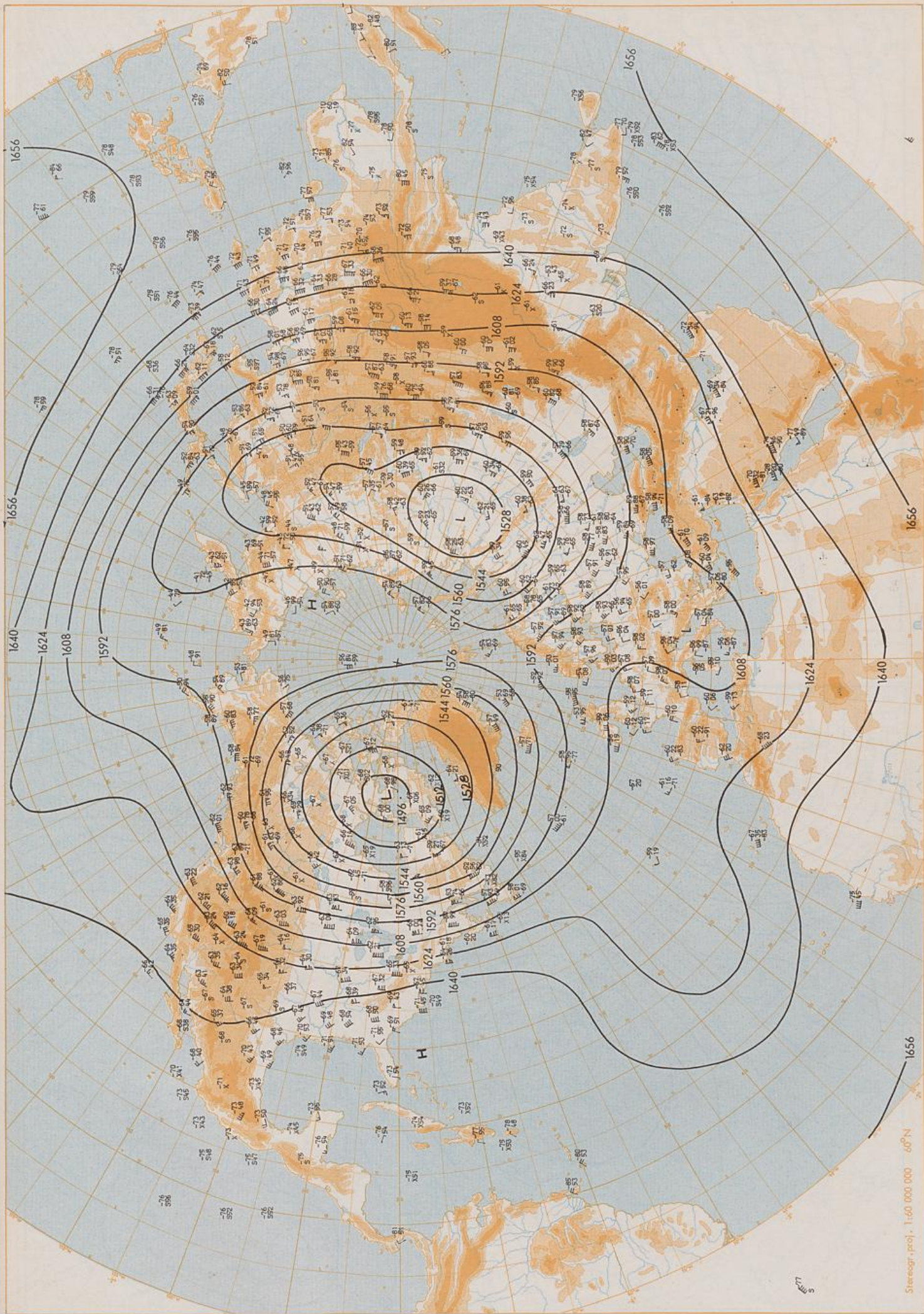
Stereogr.-proj. 1:60 000 000 60°N



500 hPa 00 GMT

Stereogr.-proj. 1:60 000 000 60°N



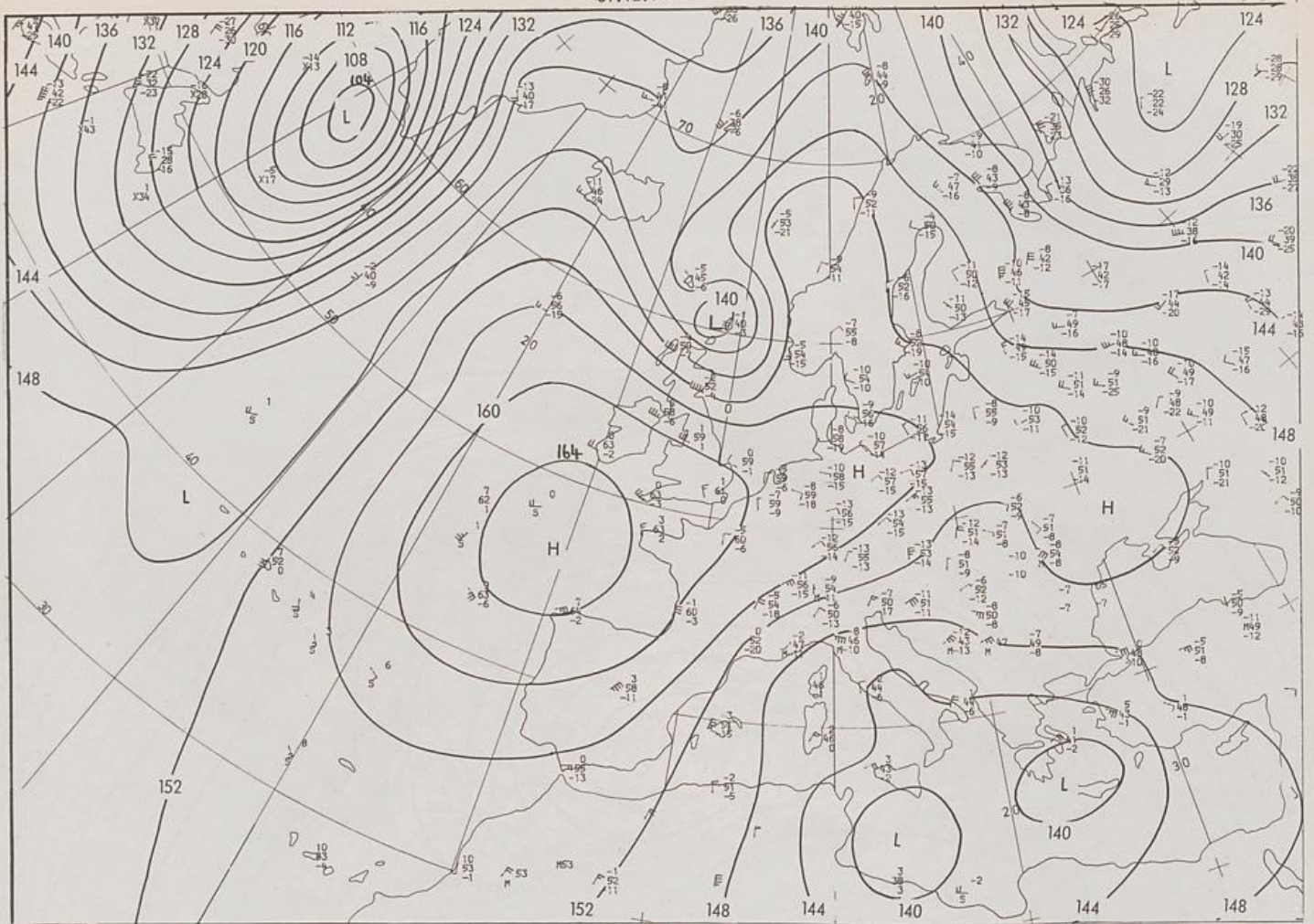


6

Stereogr. proj. 1:60 000 000 60°N

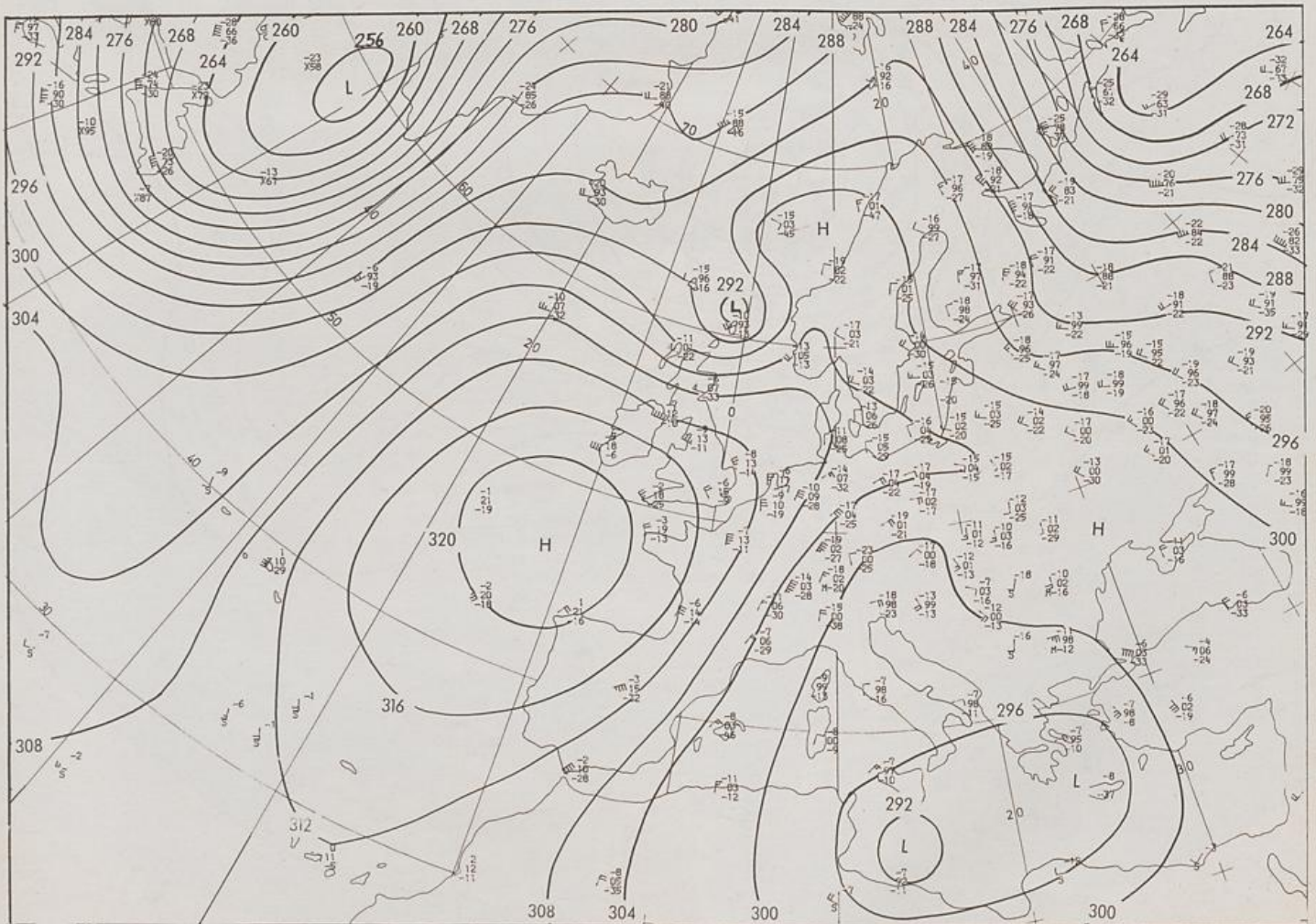
100 hPa 00 GMT

31.12.1984

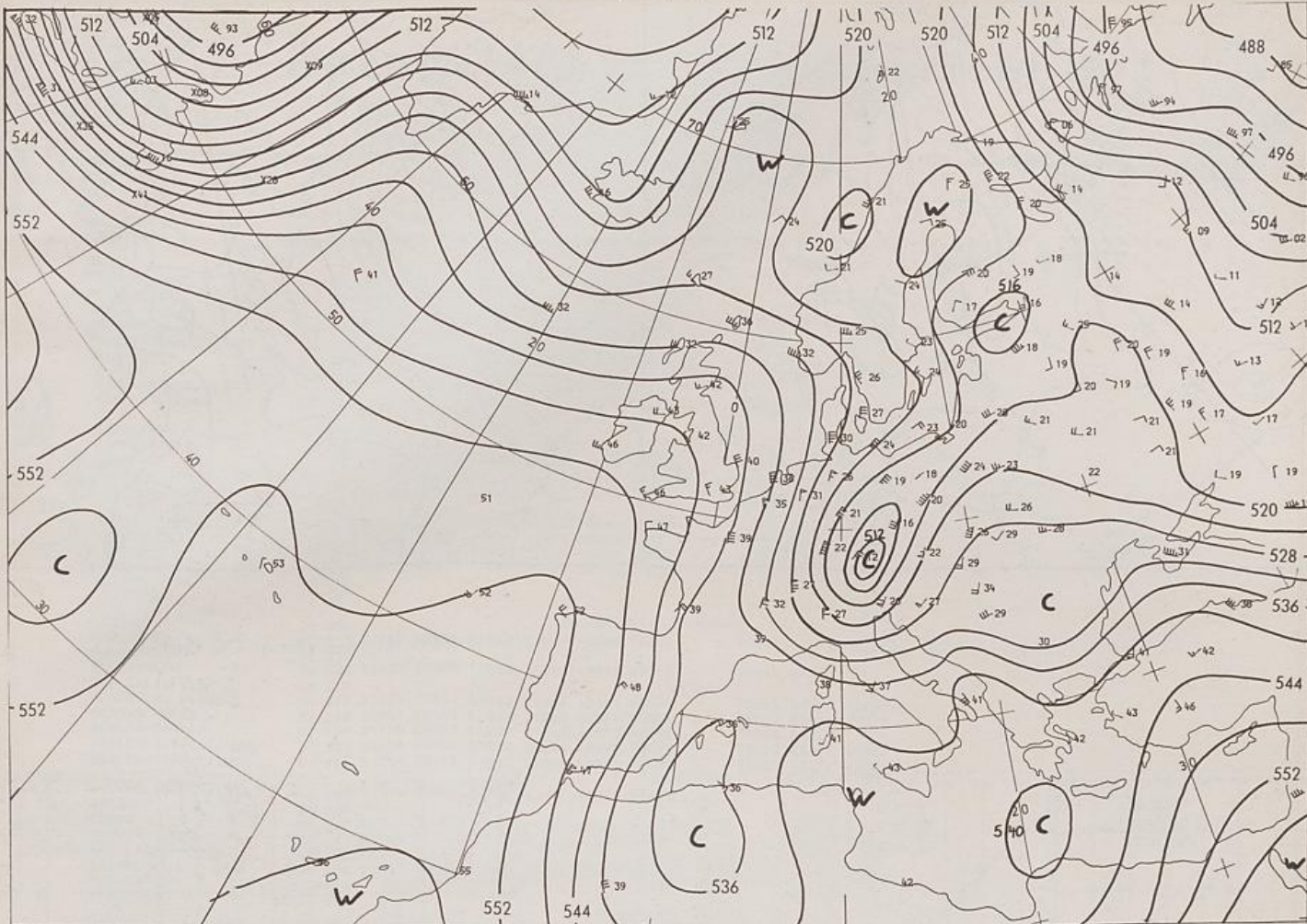


Stereogr. proj. 1:300 000 000 in 60°N

850 hPa 00 GMT

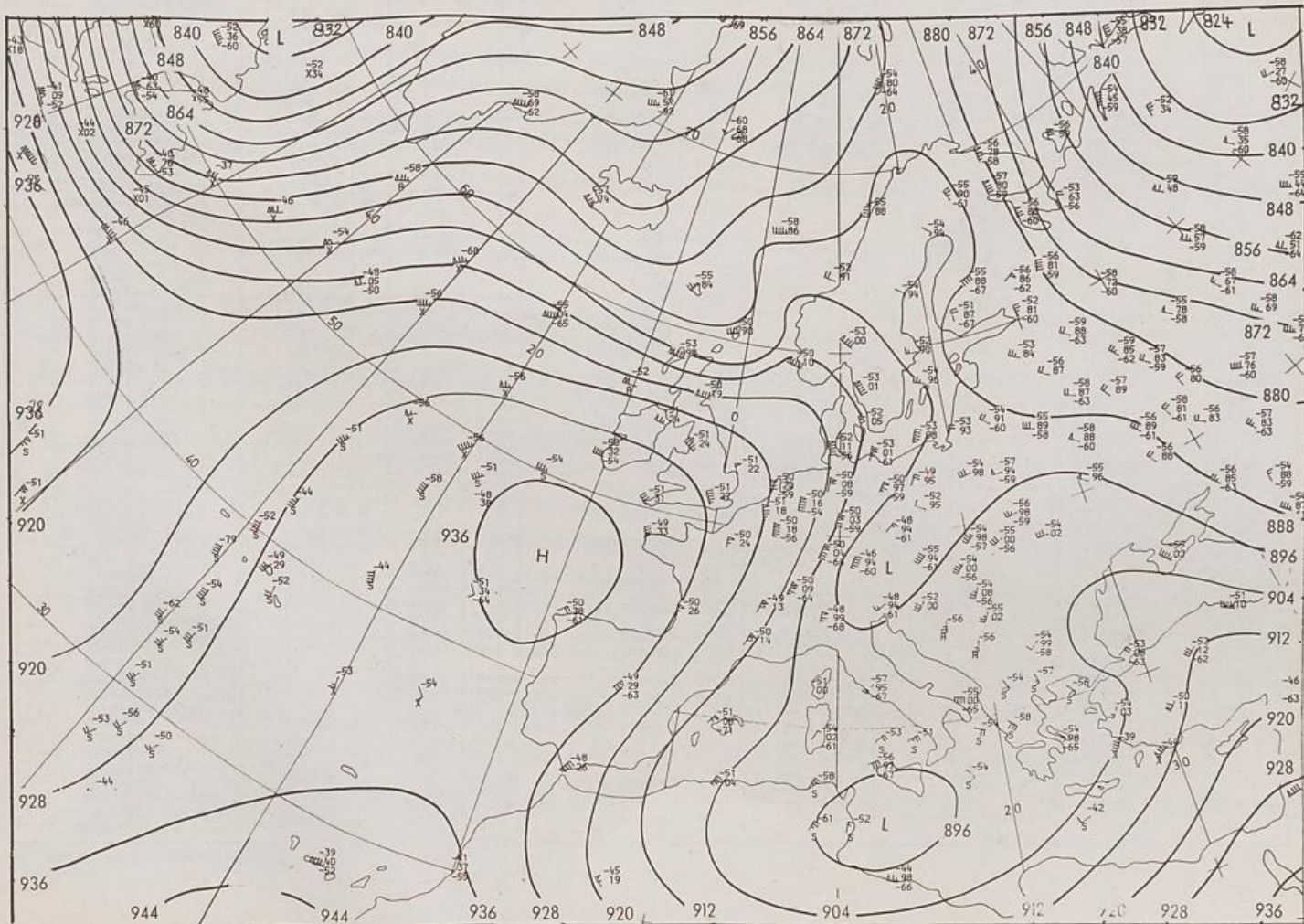


700 hPa 00 GMT



Stereogr. proj. 1:30 000 000 in 60°N

500/1000 hPa 00 GMT



300 hPa 00 GMT

