

Europäischer Wetterbericht European Meteorological Bulletin Bulletin Météorologique Européen Boletín Meteorológico Europeo

Amtsblatt des Deutschen Wetterdienstes

Druck und Verlag: Deutscher Wetterdienst — Zentralamt — D 6050 Offenbach am Main, Frankfurter Straße 135, Tel.: (0611) 80621

Erscheint täglich
Bezugspreis monatlich 30,00 DM
zusügl. Porto
Nachdruck nicht gestattet

Issued daily
Monthly price 30,00 DM
plus postage
All rights reserved

Publié quotidiennement
Prix mensuel 30,00 DM
plus port
Reproduction interdite

Se publica diariamente
Precio de suscripción mensual 30,00 DM
plus porte
Se prohíbe la reproducción

Jahrgang
Volume 9

Freitag
Friday
Vendredi
Viernes
2.03.1984

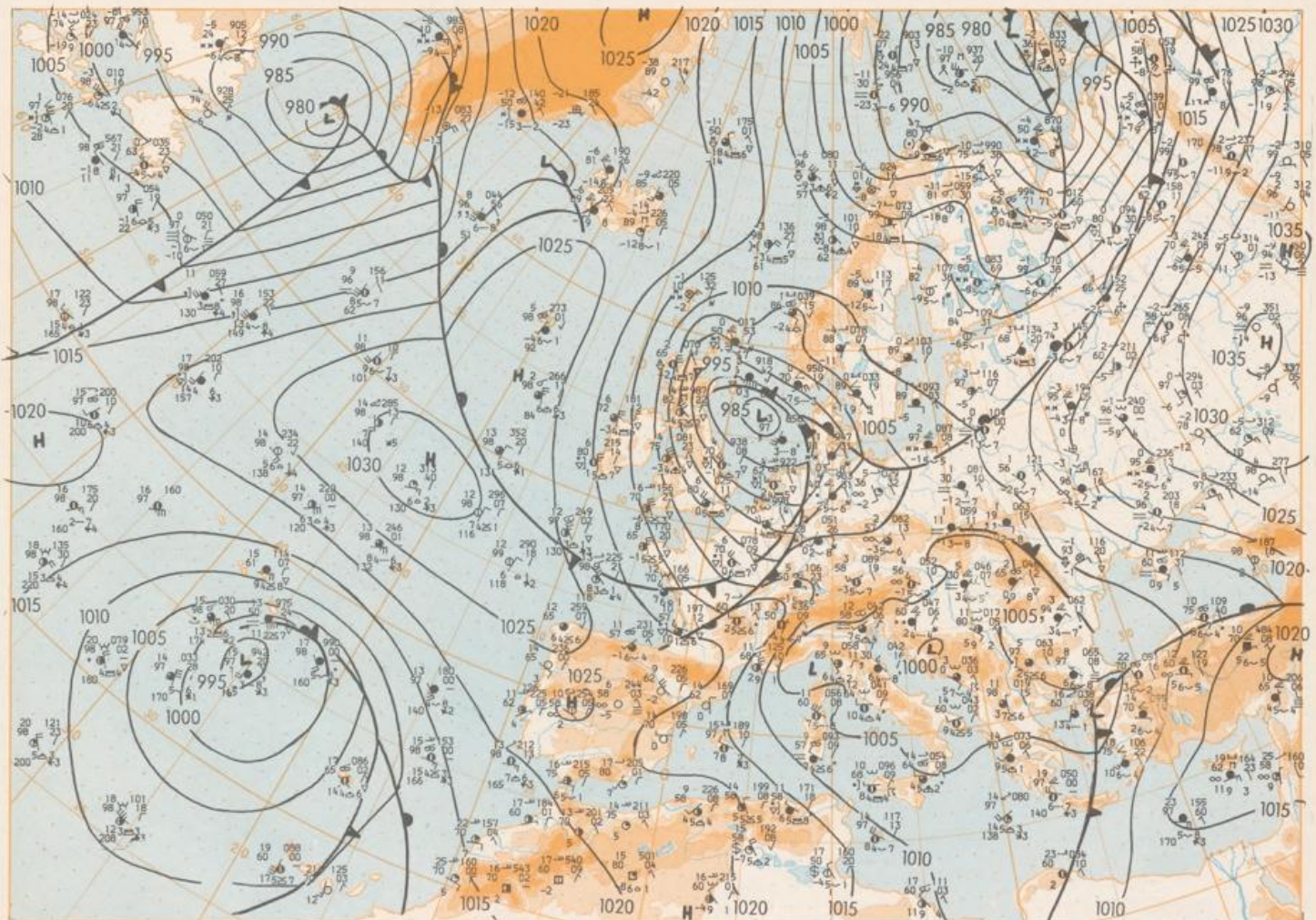
Number
Number
Número
Número
62

Inhalt
Bodenwetterkarte 12 MGZ
Bodenwetterkarte Nordhemisphäre 00 MGZ
500 hPa-Fläche Nordhemisphäre 00 MGZ
200 hPa-Fläche Nordhemisphäre 00 MGZ
100 hPa-Fläche Nordhemisphäre 00 MGZ
850 hPa 00 MGZ, 700 hPa 00 MGZ
Relative Topographie 300/1000 hPa 00 MGZ
100 hPa 00 MGZ
24hlg. Änderung/Veränderung 00 MGZ
24hly. Änderung/relative Topographie
300/1000 hPa 00 MGZ
Astrologische Diagramme 00 MGZ

Content
Surface chart 12 GMT
Surface chart northern hemisphere 00 GMT
500 hPa surface northern hemisphere 00 GMT
200 hPa surface northern hemisphere 00 GMT
100 hPa surface northern hemisphere 00 GMT
850 hPa 00 GMT, 700 hPa 00 GMT
Thickness chart 300/1000 hPa 00 GMT
300 hPa 00 GMT
24 hr surface pressure change 00 GMT
24 hr thickness change
300/1000 hPa 00 GMT
Astrological diagrams 00 GMT

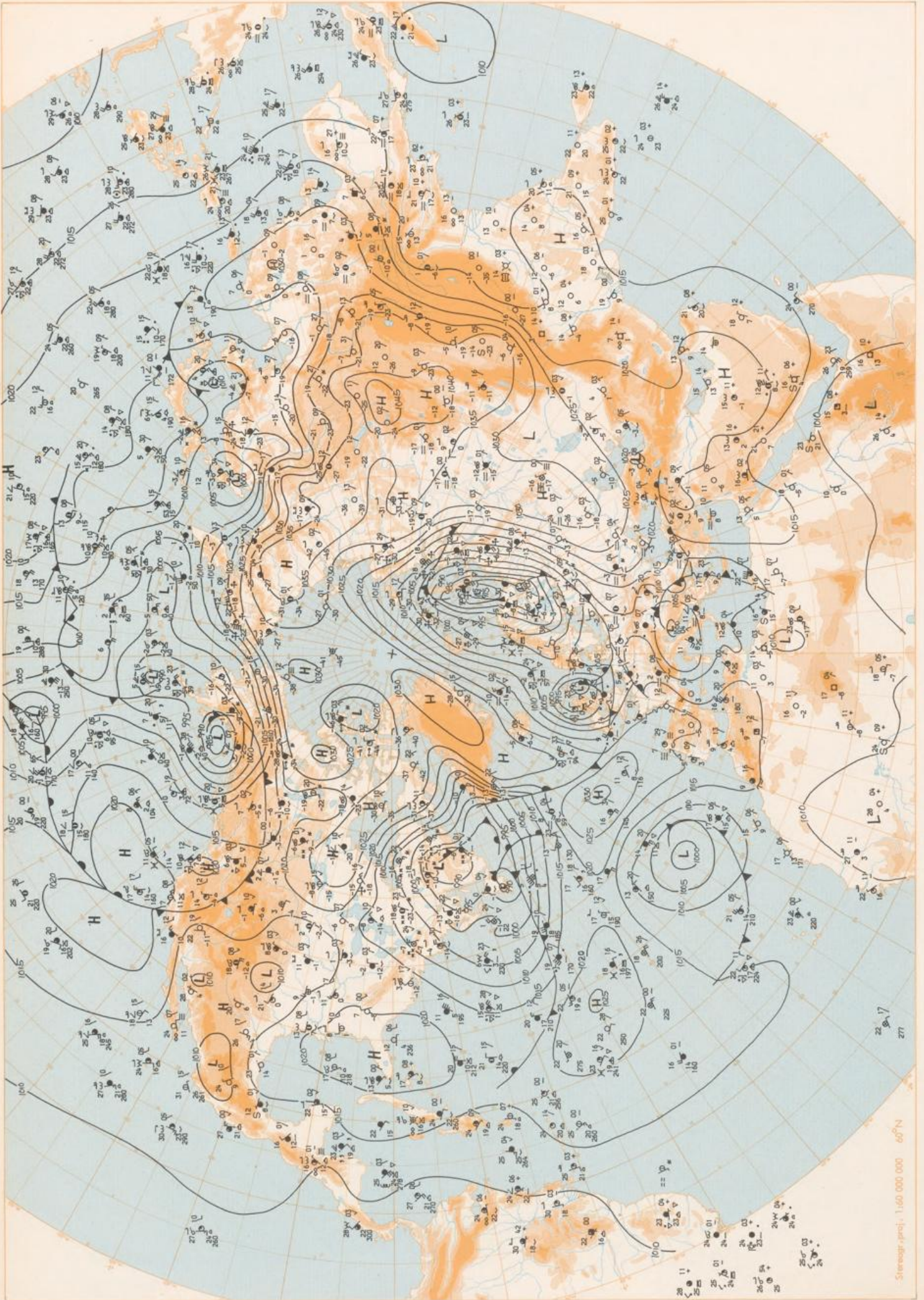
Contenu
Carte de surface à 12 TU
Carte de surface sur l'hémisphère nord à 00 TU
Surface 500 hPa sur l'hémisphère nord à 00 TU
Surface 200 hPa sur l'hémisphère nord à 00 TU
Surface 100 hPa sur l'hémisphère nord à 00 TU
850 hPa 00 TU, 700 hPa 00 TU
Carte d'épaisseur 300/1000 hPa 00 TU
300 hPa 00 TU
Variations de pression en 24 h (niveau mer)
en hPa à 00 TU
Variations d'épaisseur 300/1000 hPa
en 24 h 00 TU
Diagrammes astrologiques 00 TU

Contenido
Análisis en superficie a las 12 T.M.G.
Análisis en superficie hemisferio norte a las 0 T.M.G.
Topografía de la superficie de 500 hPa hemisferio
norte a las 00 T.M.G.
Topografía de la superficie de 200 hPa hemisferio
norte a las 00 T.M.G.
Topografía de la superficie de 100 hPa hemisferio
norte a las 00 T.M.G.
850 hPa 00 T.M.G., 700 hPa 00 T.M.G.
Resacas 300/1000 hPa 00 T.M.G.
300 hPa 00 T.M.G.
Variación de la presión del suelo 24 h en hPa
a las 00 T.M.G.
Variación de espesor 300/1000 hPa
en 24 h 00 T.M.G.
Diagramas astrologicos 00 T.M.G.



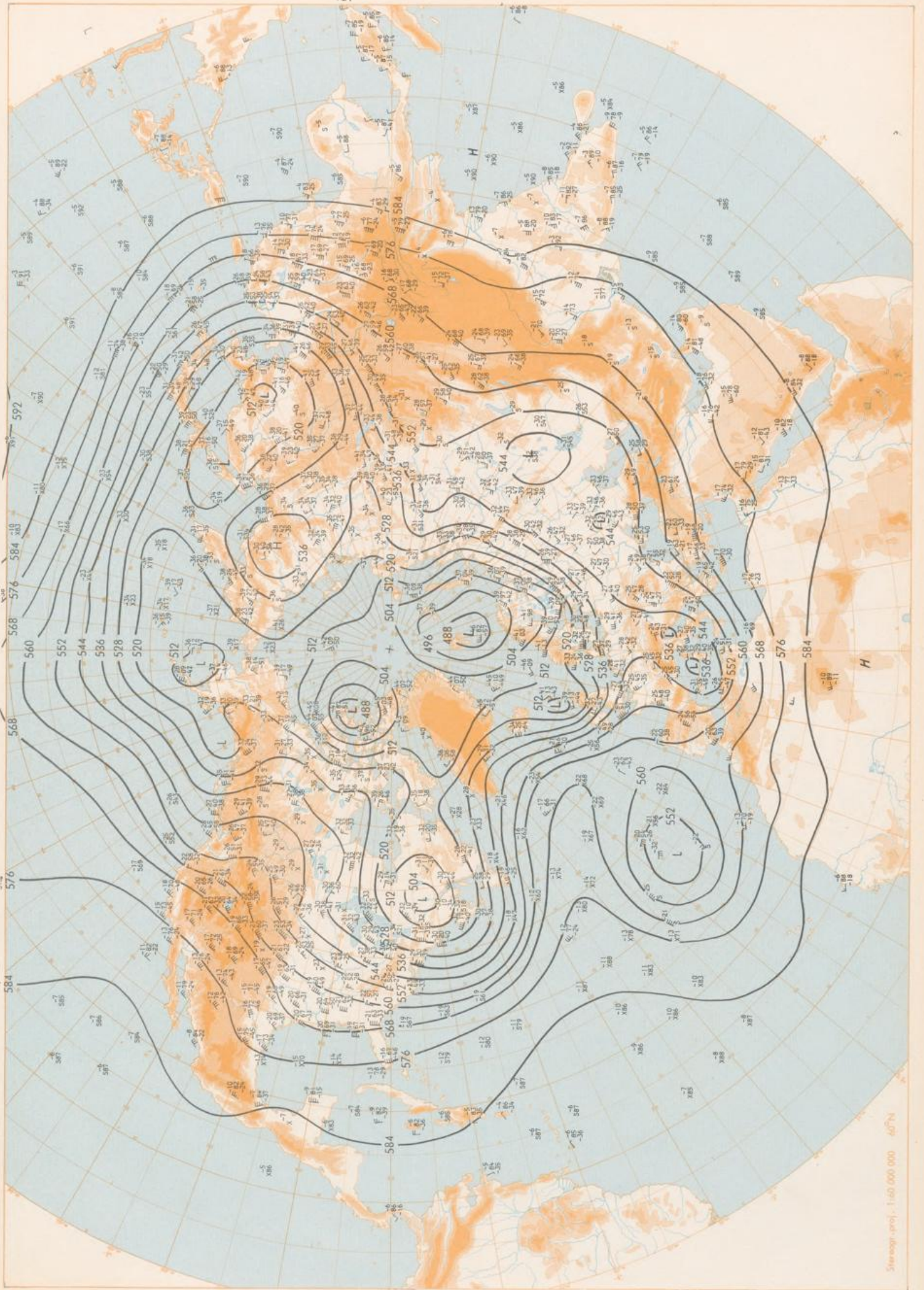
Stereogr. proj. 1:30 000 00 60°N

Surface chart 12 GMT

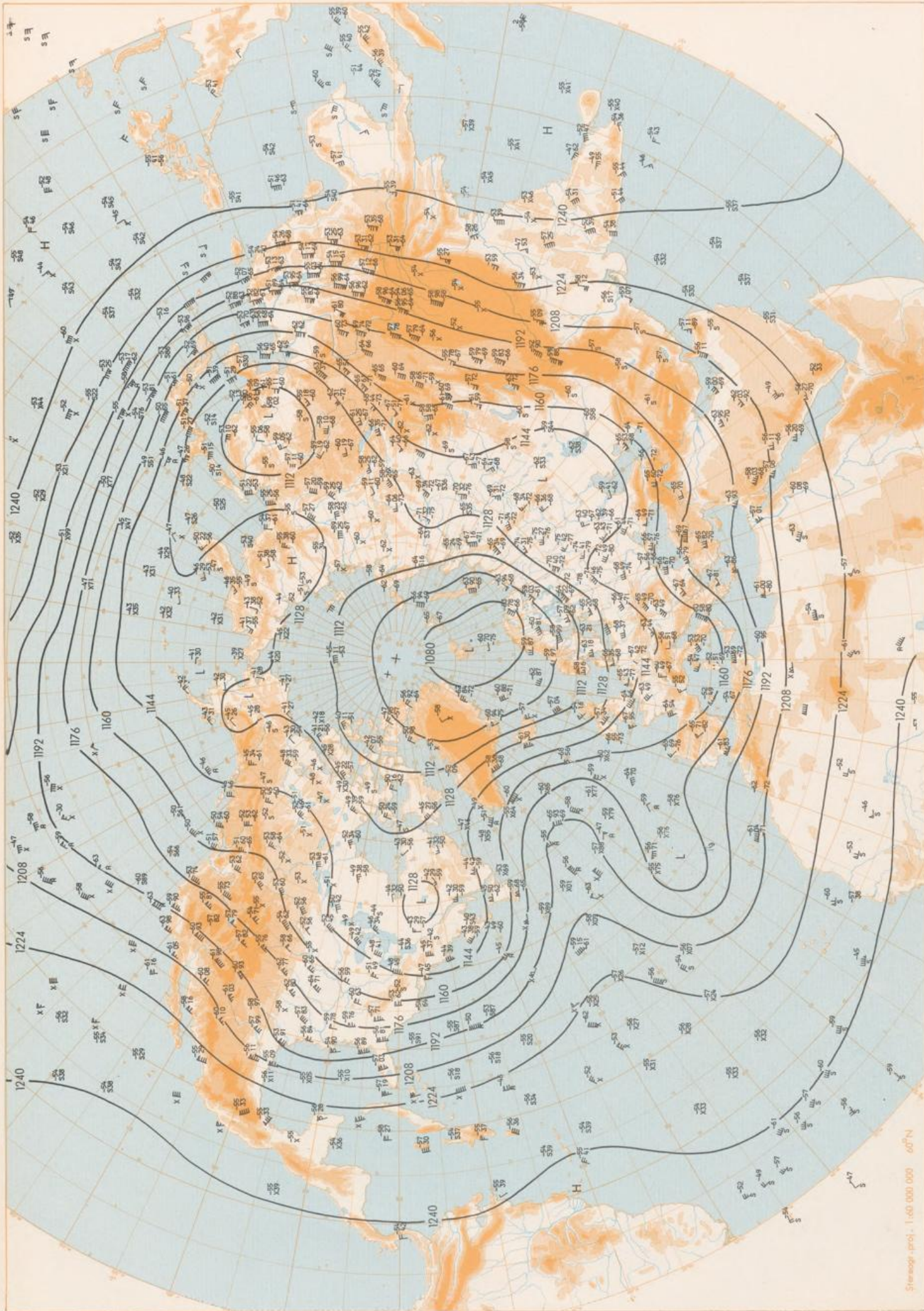


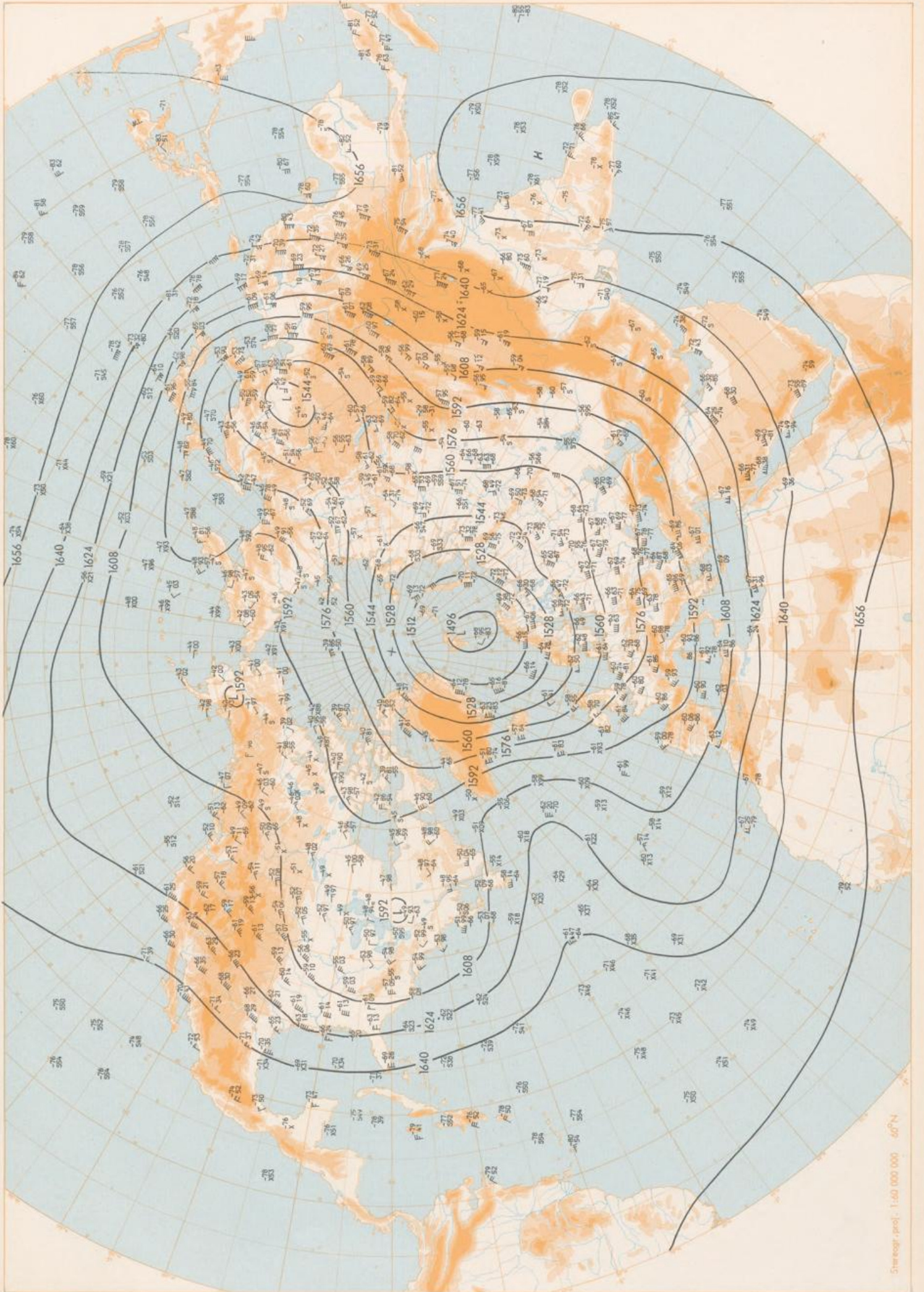
Surface chart 00 GMT

Stereogr.-proj.: 1:600 000 000 60°N

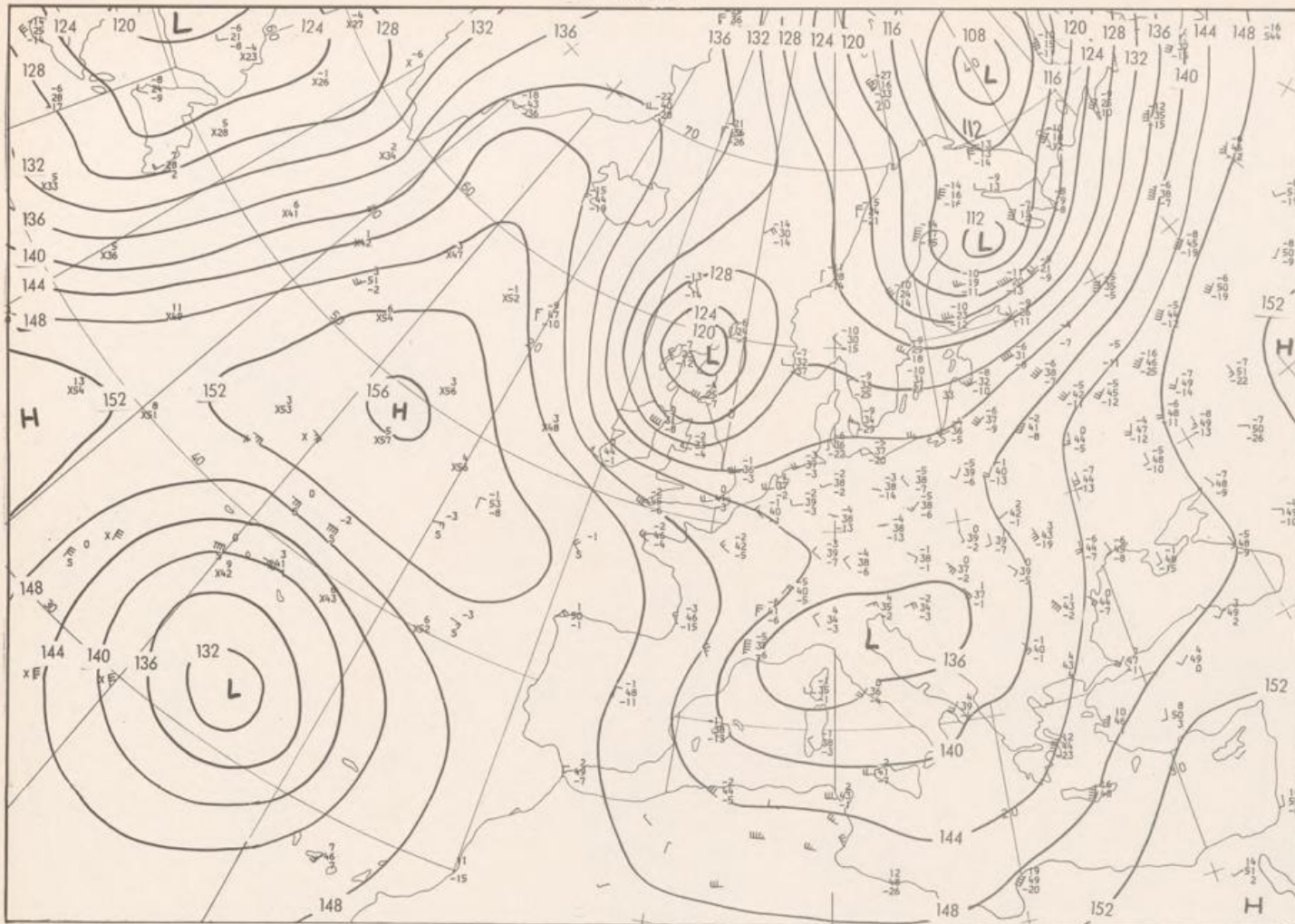


500 hPa 00 GMT



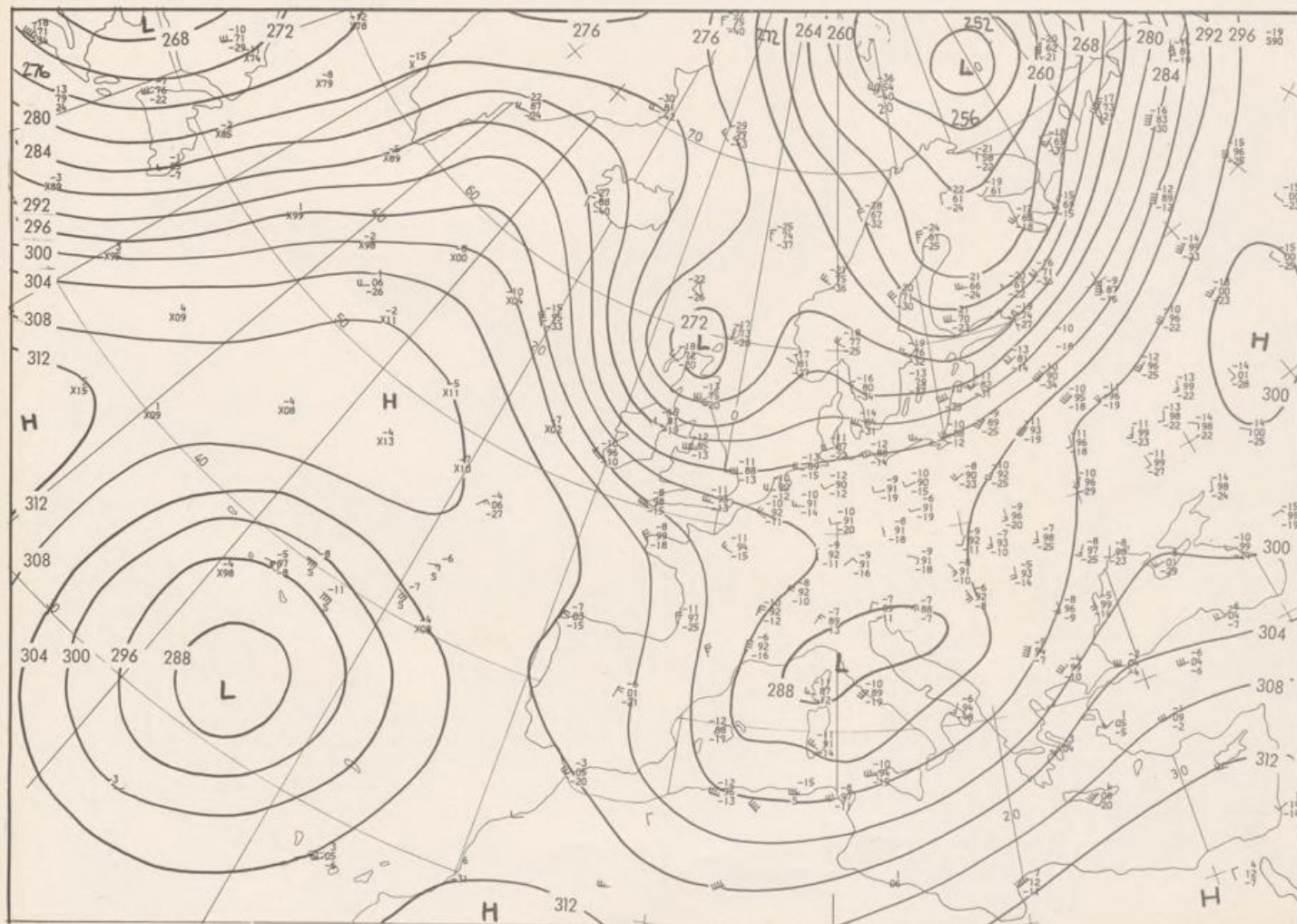


100 hPa 00 GMT

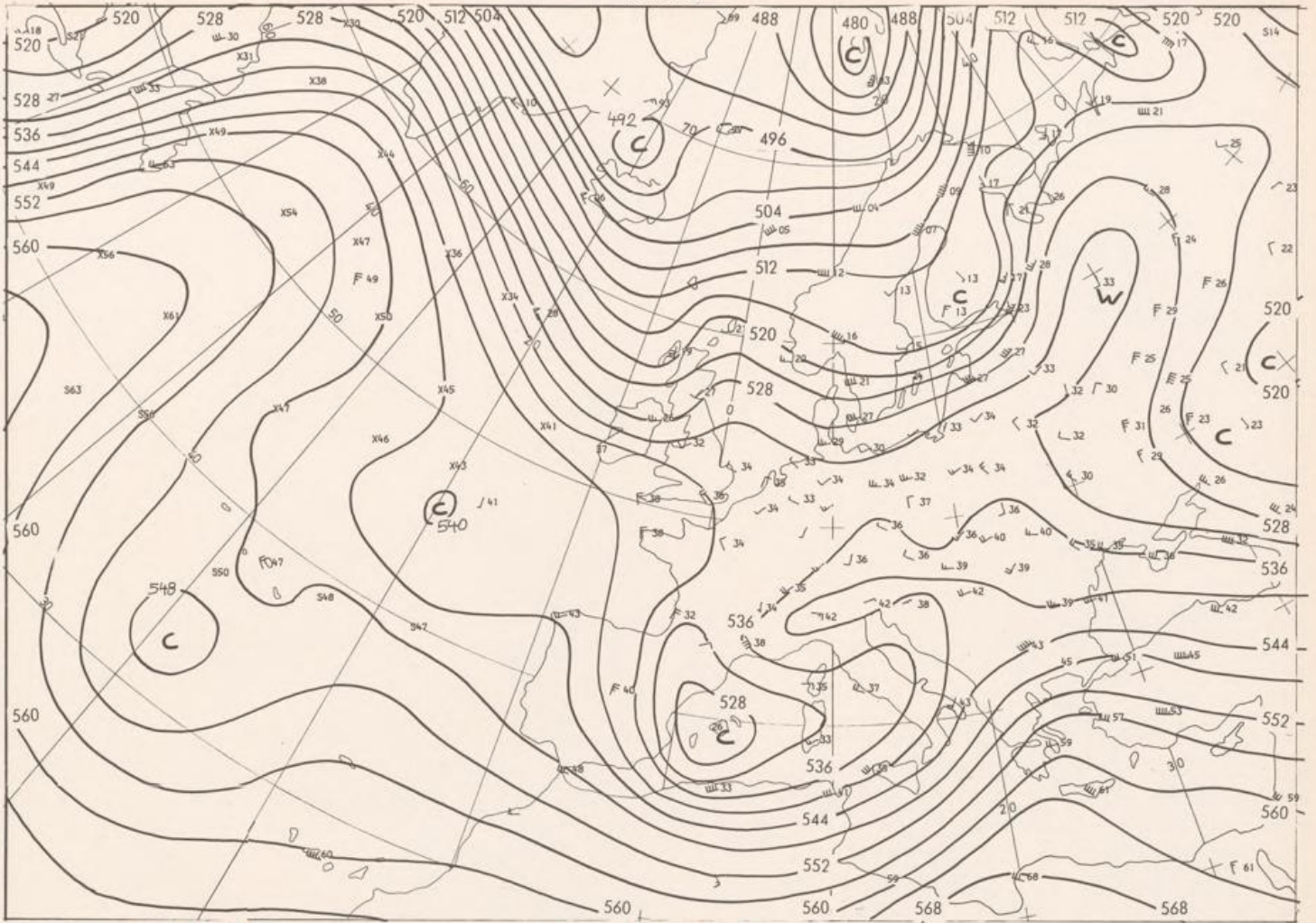


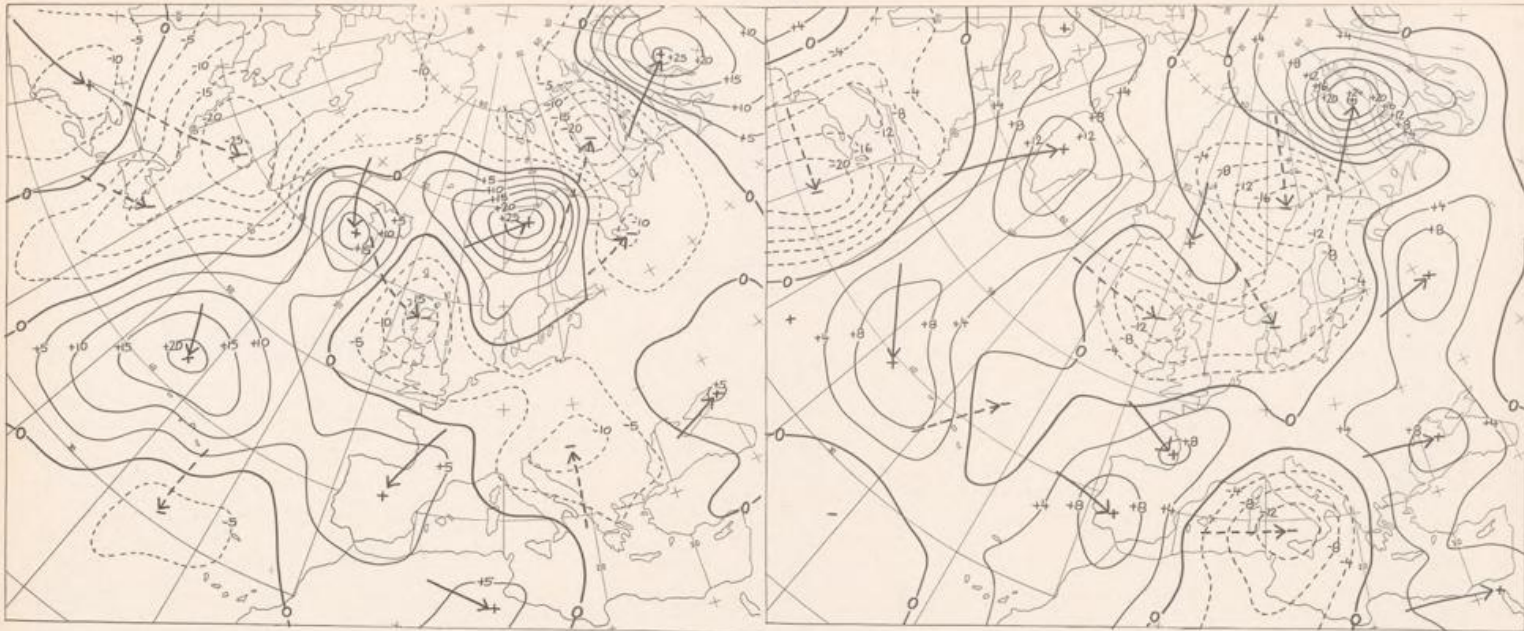
Stereogr. proj. 1:30 000 000 in 50°N

850 hPa 00 GMT



700 hPa 00 GMT

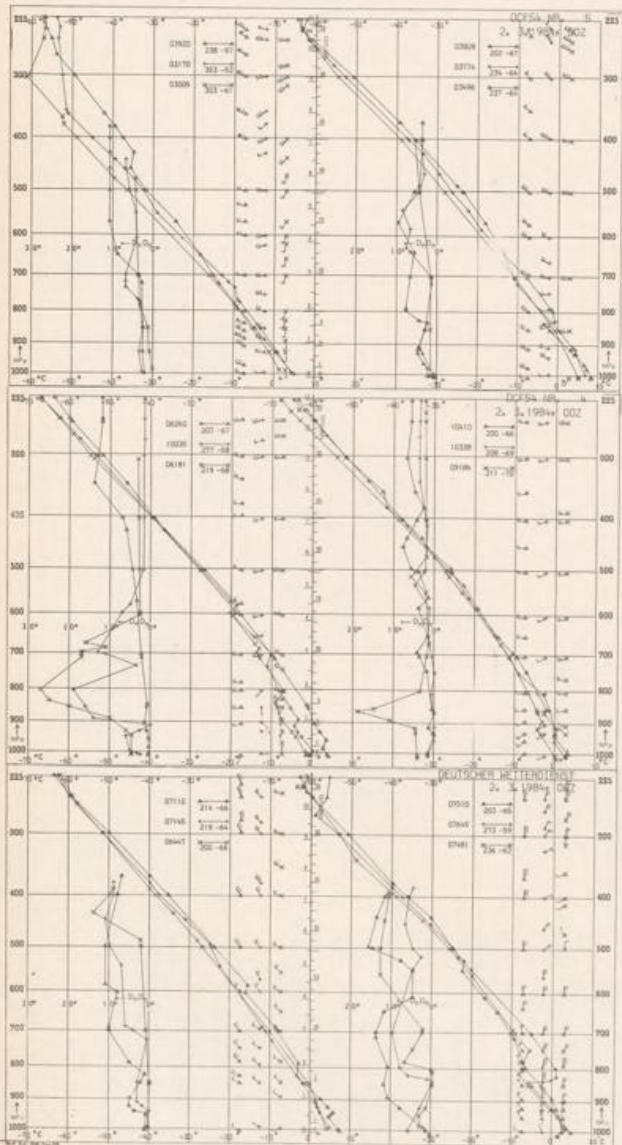




24 hr surface pressure change OO GMT

Sterraogr.proj. 1:60 000 000

24 hr thickness change OO GMT



Aerological Diagrams 00 GMT

- 01241 Orland
- 01384 Oslo
- 01415 Stavanger
- 02465 Stockholm
- 02527 Goteborg
- 03005 Lerwick
- 03170 Shanwell
- 03496 Hemsby
- 03774 Crawley
- 03808 Camborne
- 03920 Long Kesh
- 06181 Kobenhavn
- 06260 De Bilt
- 06447 Uccle
- 06610 Payeme
- 07110 Brest
- 07145 Trappes
- 07481 Lyon
- 07510 Bordeaux
- 07645 Nimes
- 09184 Greifswald
- 09393 Lindenberg
- 09548 Meiningen
- 10035 Schleswig
- 10338 Hannover
- 10410 Essen
- 10739 Stuttgart
- 10868 München-Oberschleißheim
- 11035 Wien
- 11520 Praha-Libus
- 12374 Legionowo
- 12843 Budapest
- 13275 Beograd
- 16044 Udine
- 16080 Milano
- 16242 Roma

