

Europäischer Wetterbericht European Meteorological Bulletin Bulletin Météorologique Européen Boletín Meteorológico Europeo

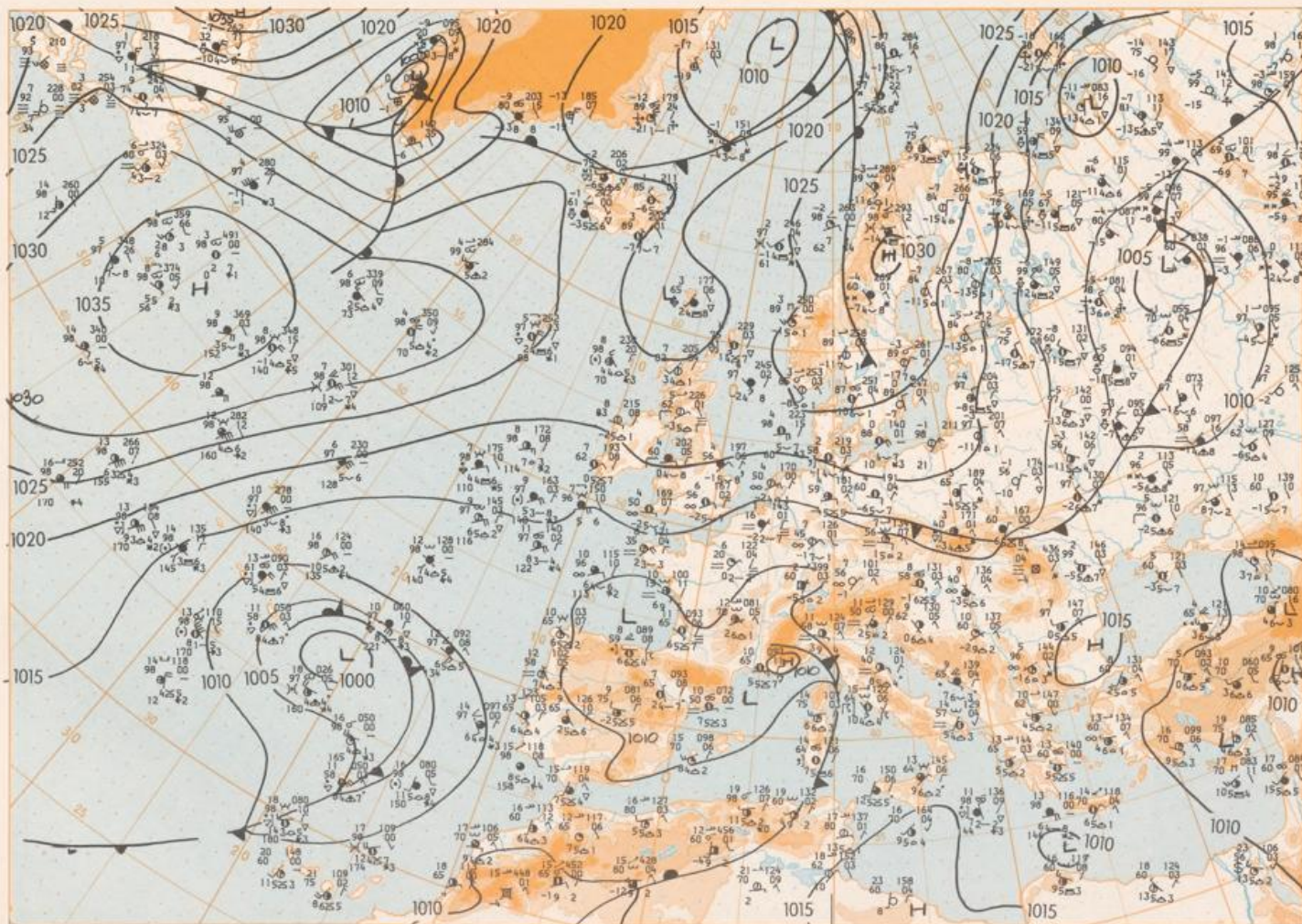
Amtsblatt des Deutschen Wetterdienstes

Druck und Verlag: Deutscher Wetterdienst — Zentralamt — D 6050 Offenbach am Main, Frankfurter Straße 135, Tel.: (0611) 80621

Erscheint täglich	Issued daily	Publié quotidiennement	Se publica diariamente
Bezugpreis monatlich 30,00 DM	Monthly price 30,00 DM	Prix mensuel 30,00 DM	Precio de suscripción mensual 30,00 DM
zustügl. Porto	plus postage	plus port	plus porte
Nachdruck nicht gestattet	All rights reserved	Reproduction interdite	Se prohíbe la reproducción

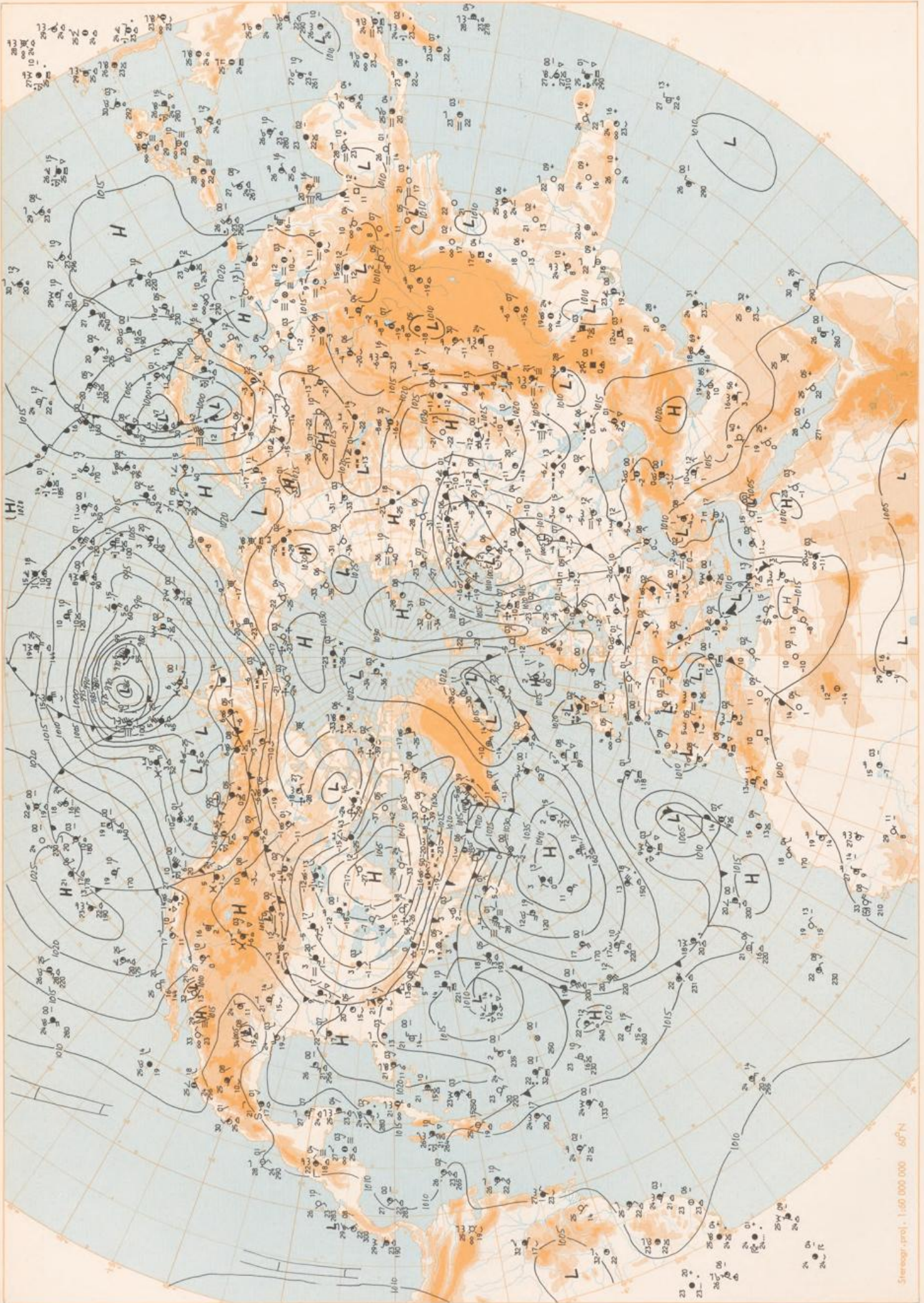
Jahrgang Volume Volume Volumen	9	Samstag Saturday Samedi Sábado	17.03.1984	Nummer Number Número Número	77
-----------------------------------------	---	-----------------------------------------	------------	--------------------------------------	----

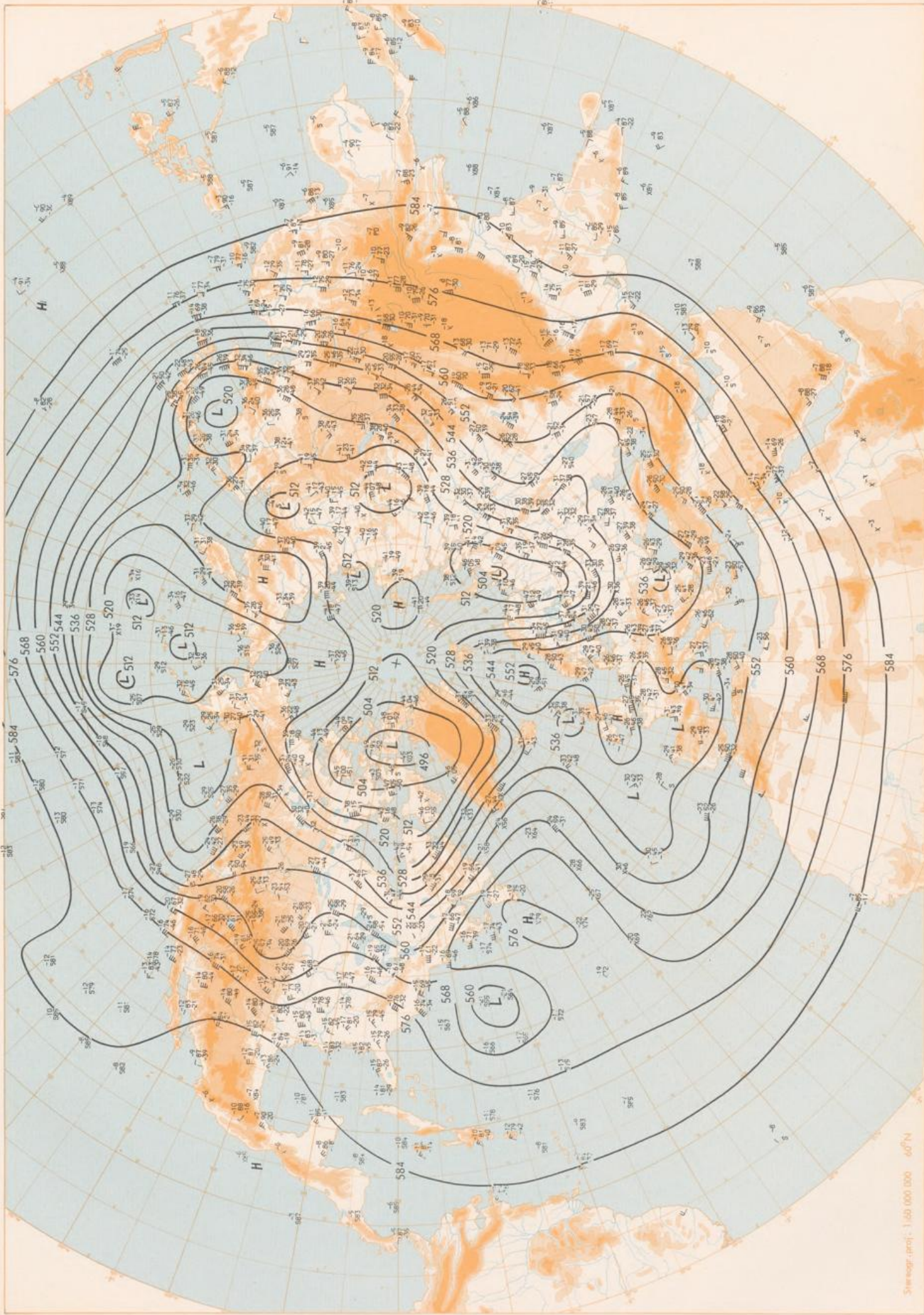
Inhalt	Contant	Contenu	Contenido
Bodenwetterkarte 12 MGZ	Surface chart 12 GMT	Carte de surface à 12 TU	Análisis en superficie a las 12 T.M.G.
Bodenwetterkarte Nordhemisphäre 00 MGZ	Surface chart northern hemisphere 00 GMT	Carte de surface sur l'hémisphère nord à 00 TU	Análisis en superficie hemisferio norte a las 00 T.M.G.
300 hPa-Fläche Nordhemisphäre 00 MGZ	300 hPa surface northern hemisphere 00 GMT	Surface 300 hPa sur l'hémisphère nord à 00 TU	Topografía de la superficie de 300 hPa hemisferio norte a las 00 T.M.G.
200 hPa-Fläche Nordhemisphäre 00 MGZ	200 hPa surface northern hemisphere 00 GMT	Surface 200 hPa sur l'hémisphère nord à 00 TU	Topografía de la superficie de 200 hPa hemisferio norte a las 00 T.M.G.
100 hPa-Fläche Nordhemisphäre 00 MGZ	100 hPa surface northern hemisphere 00 GMT	Surface 100 hPa sur l'hémisphère nord à 00 TU	Topografía de la superficie de 100 hPa hemisferio norte a las 00 T.M.G.
500 hPa 00 MGZ, 700 hPa 00 MGZ	500 hPa 00 GMT, 700 hPa 00 GMT	500 hPa 00 TU, 700 hPa 00 TU	500 hPa 00 T.M.G., 700 hPa 00 T.M.G.
Relative Topographie 500/1000 hPa 00 MGZ	Thickness chart 500/1000 hPa 00 GMT	Carte d'épaisseur 500-1000 hPa 00 TU	Relativa 500/1000 hPa 00 T.M.G.
24h Änderung 500/1000 hPa 00 MGZ	24 h surface pressure change 00 GMT	Variations de pression en 24 h (niveau mer) en hPa à 00 TU	300 hPa 00 T.M.G.
24h Änderung relative Topographie 500/1000 hPa 00 MGZ	24 h thickness change 500/1000 hPa 00 GMT	Variations d'épaisseur 500/1000 hPa en 24 h 00 TU	Variación de la presión del suelo 24 h en hPa a las 00 T.M.G.
Aerologische Diagramme 00 MGZ	Aerological diagrams 00 GMT	Diagrammes aérologiques 00 TU	Variación de espesor 500/1000 hPa en 24 h 00 T.M.G.
			Diagramas aerológicos 00 T.M.G.



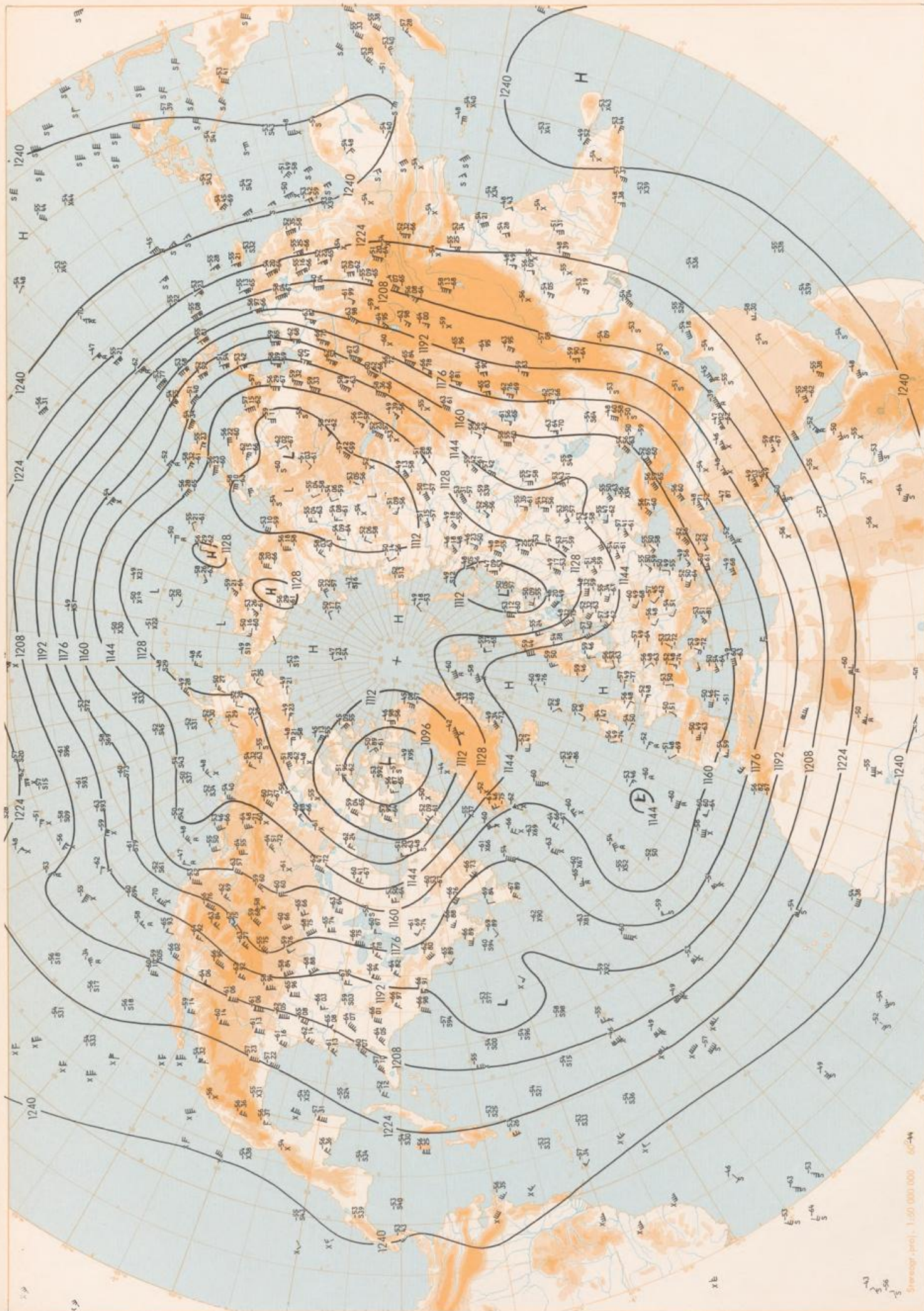
Stereogr. proj. 1:30 000 000 60°N

Surface chart 12 GMT

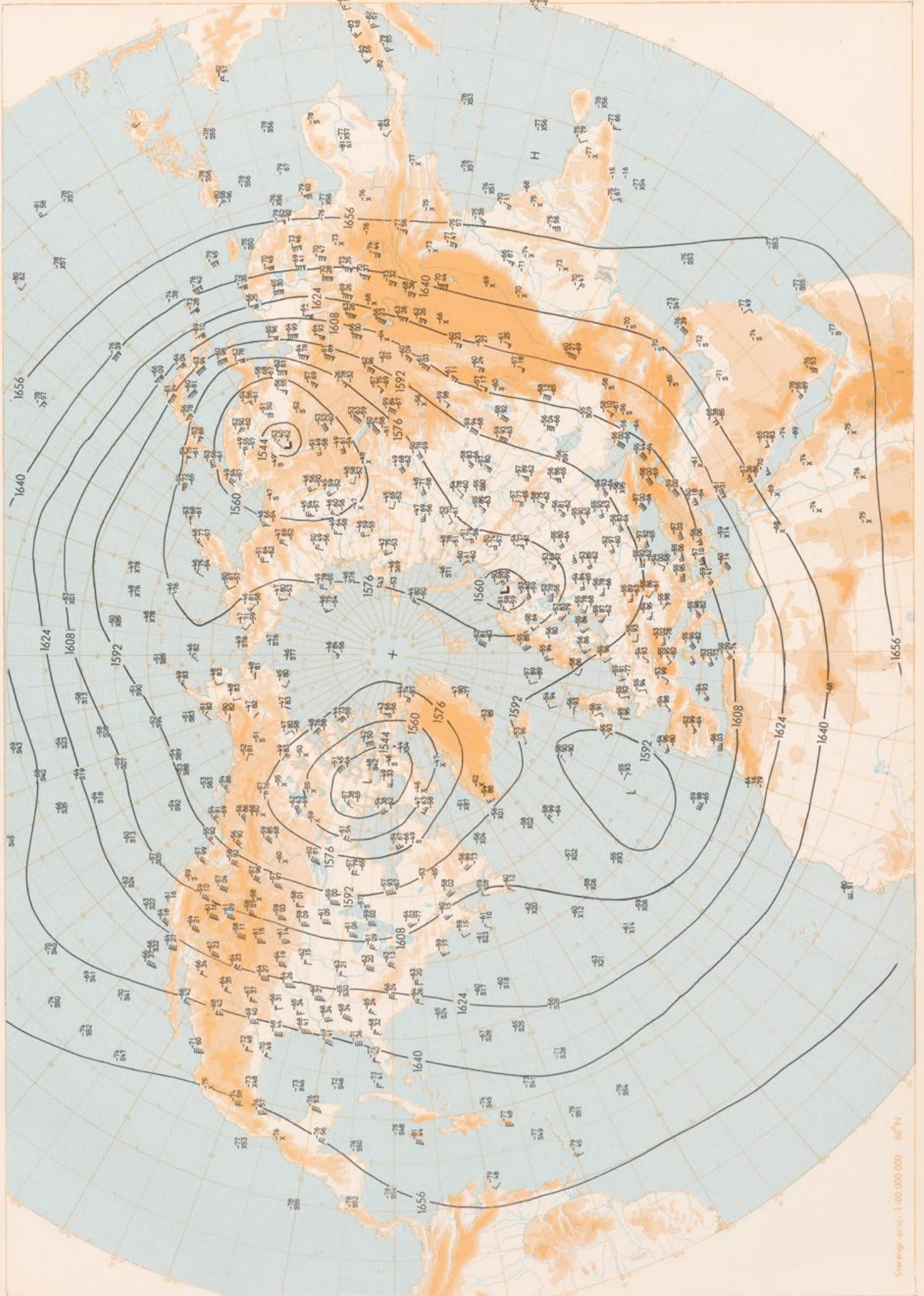




500 hPa 00 GMT

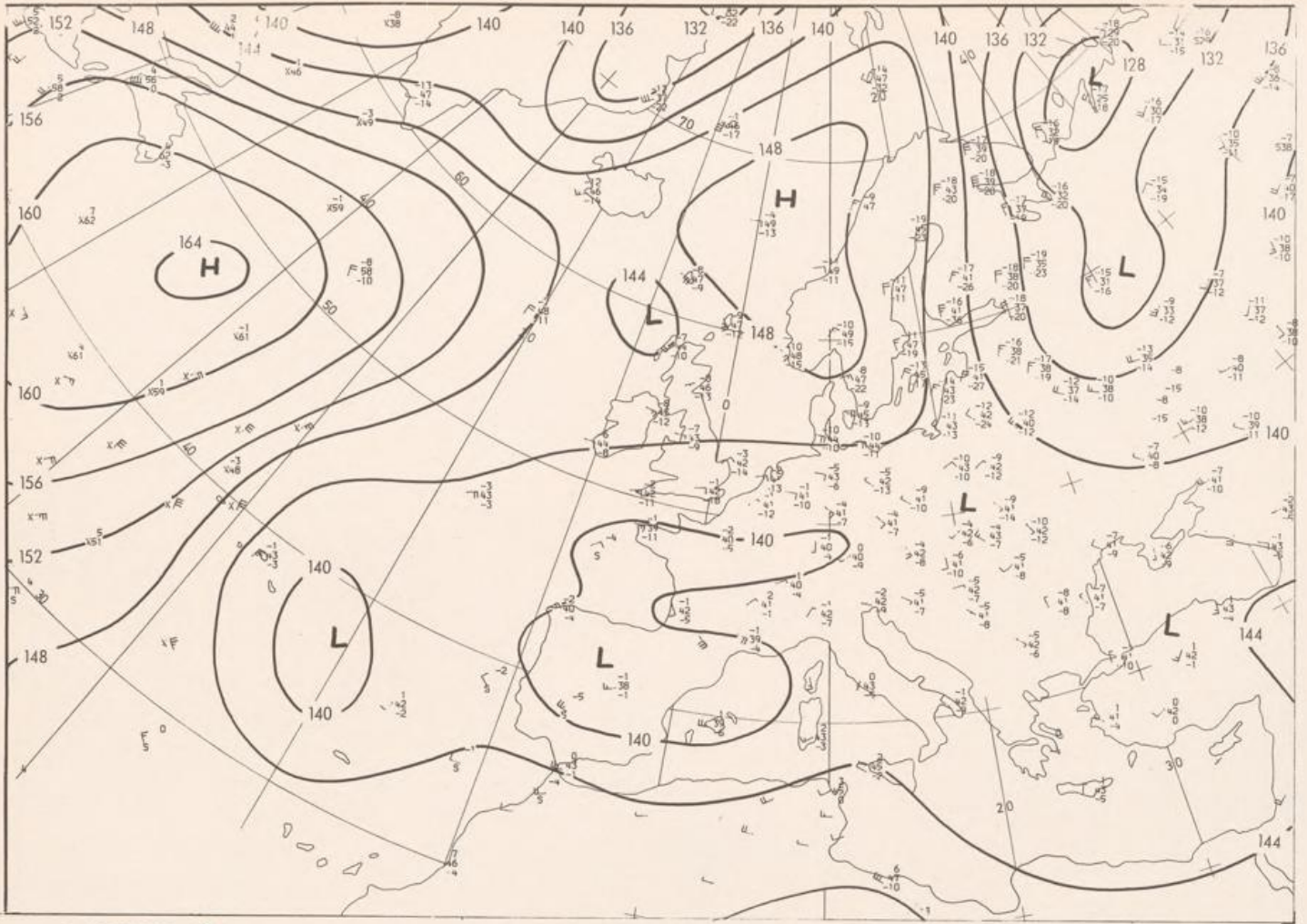


200 hPa 00 GMT



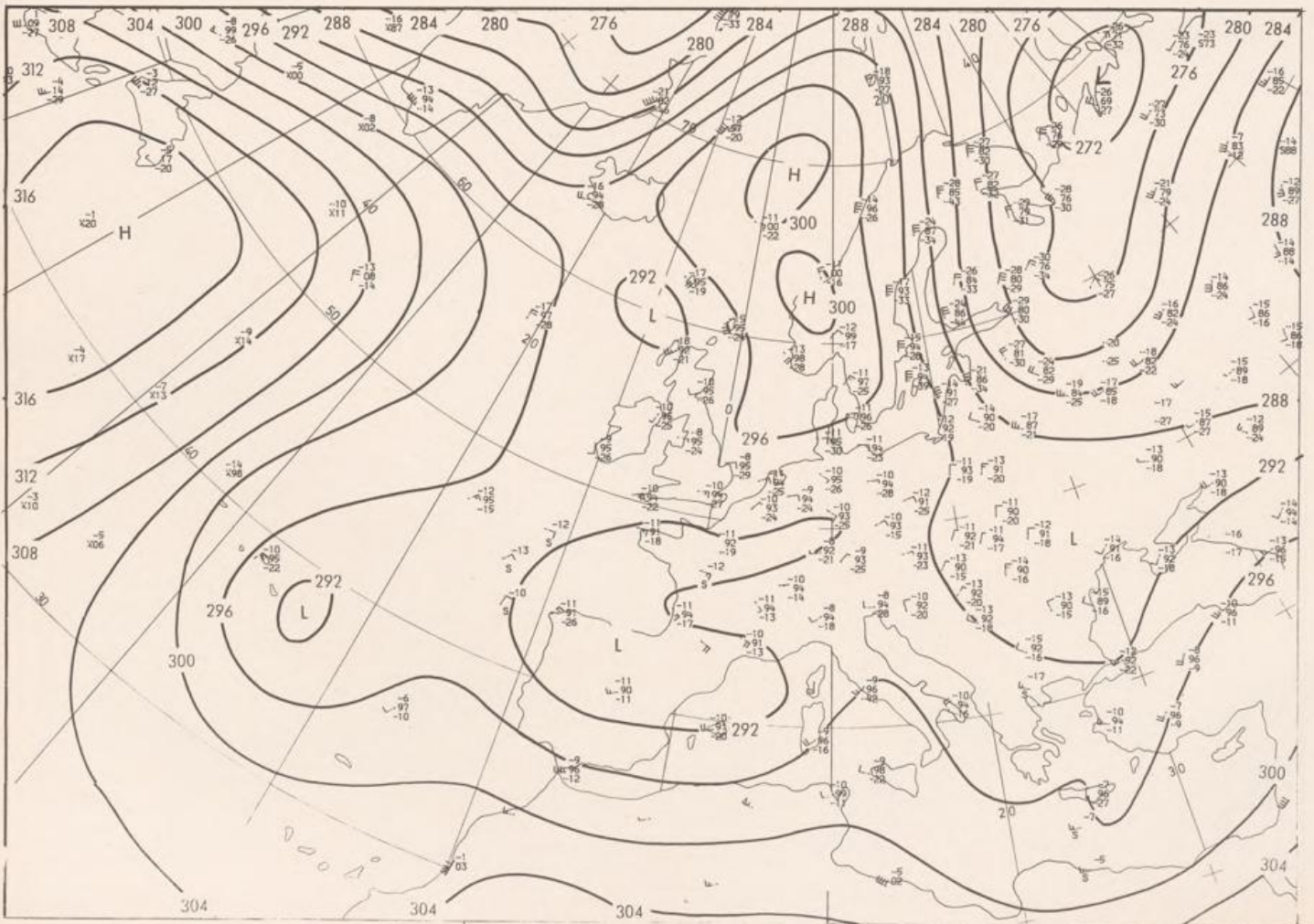
100 hPa 00 GMT

Steinbock, Ursel, 1:60 000 000 60°N

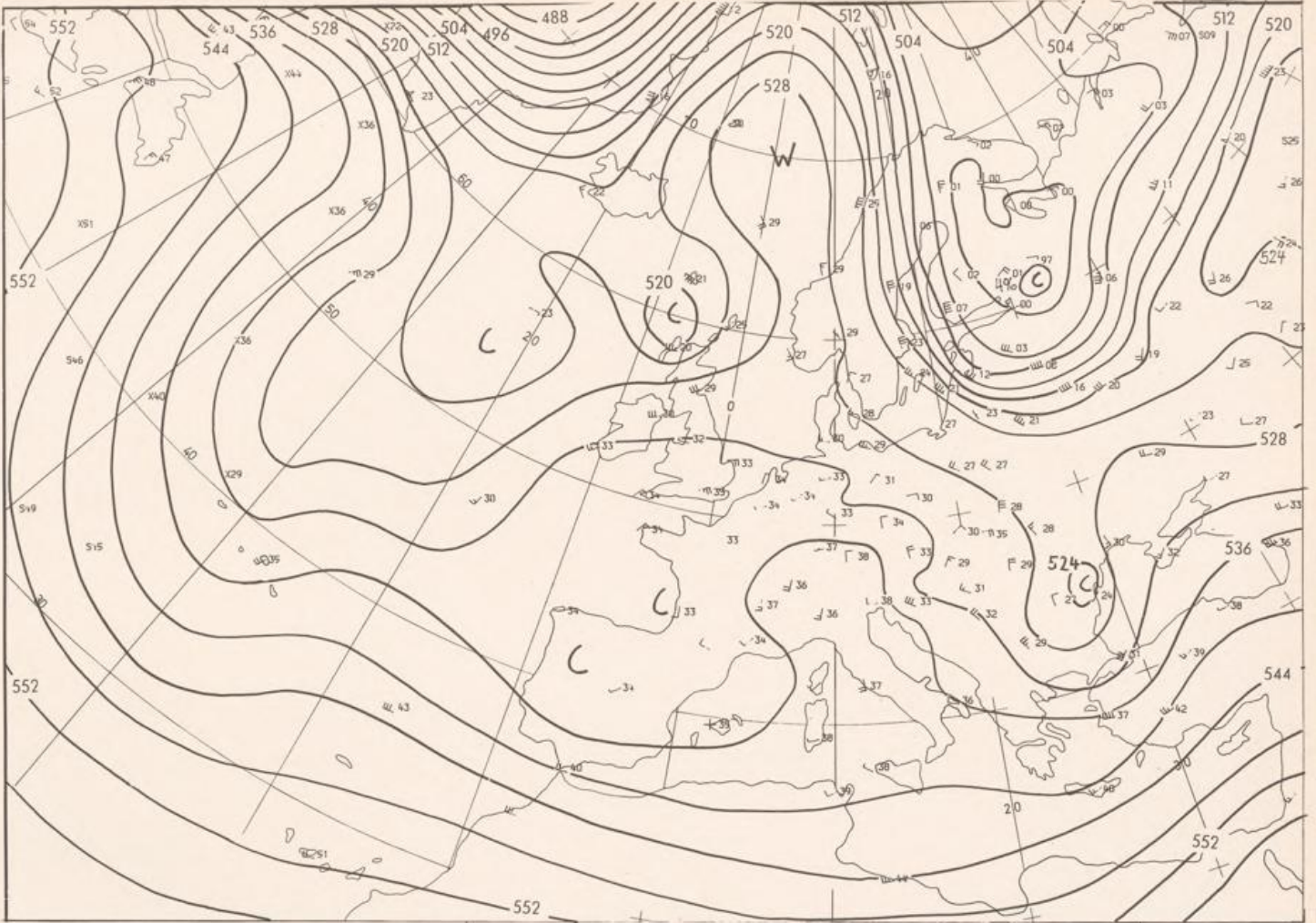


Stereogr. proj. 1:30 000 000 in 60°N

850 hPa 00 GMT

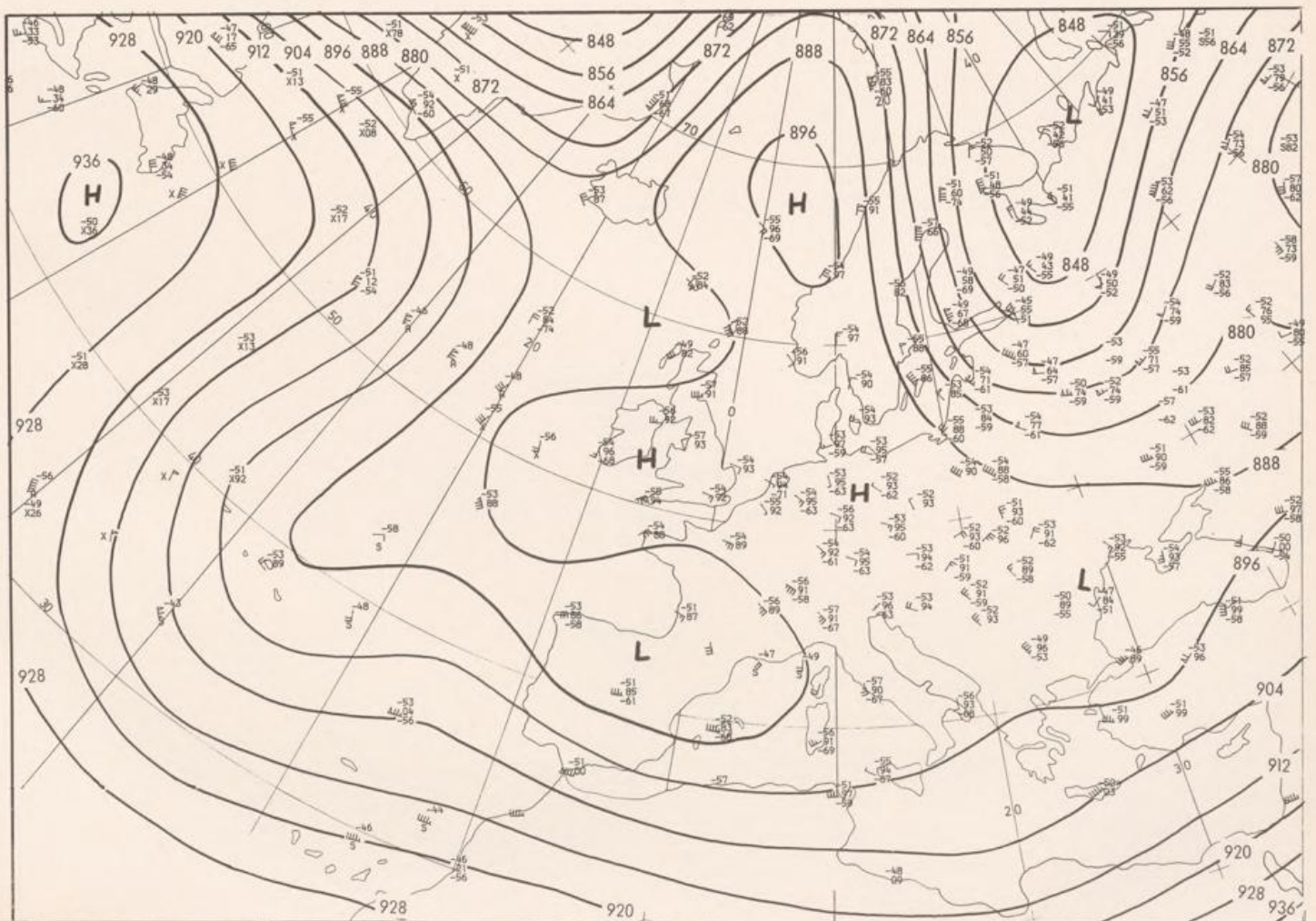


700 hPa 00 GMT

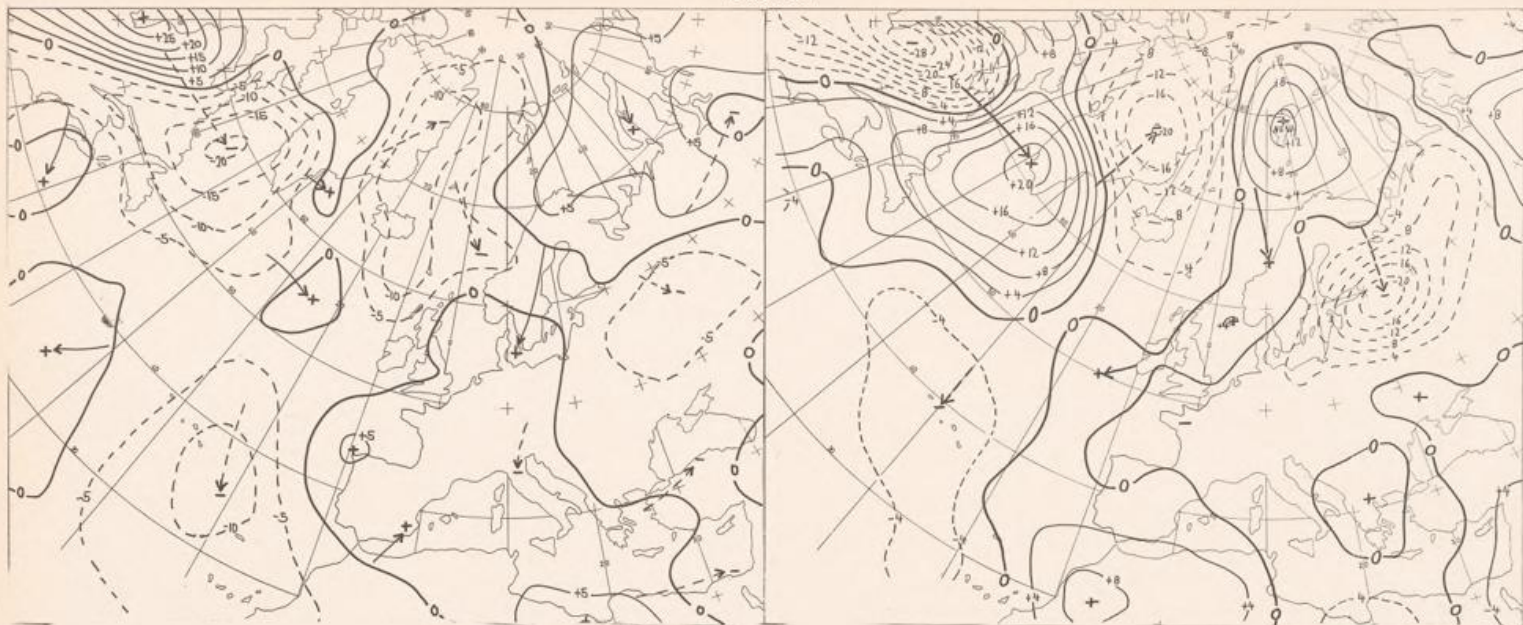


Storage:proj: 1:30 000 000 N 20°E

500/1000 hPa 00 GMT



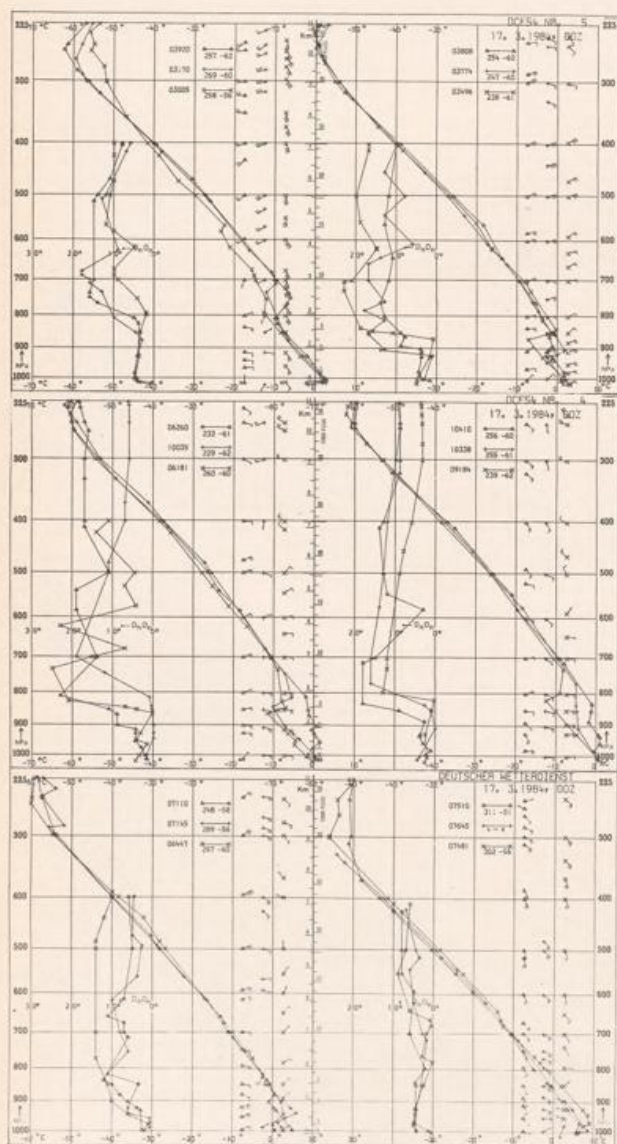
300 hPa 00 GMT



Störgr. proj. 1:60 000 000

24 hr surface pressure change 00 GMT

24 hr thickness change 00 GMT



Aerological Diagrams 00 GMT

- 01241 Orland
- 01384 Oslo
- 01415 Stavanger
- 02465 Stockholm
- 02527 Göteborg
- 03005 Lerwick
- 03170 Shanwell
- 03496 Hemsby
- 03774 Crawley
- 03808 Camborne
- 03920 Long Kesh
- 06181 København
- 06260 De Bilt
- 06447 Uccle
- 06610 Payame
- 07110 Brest
- 07145 Trappes
- 07481 Lyon
- 07510 Bordeaux
- 07645 Nîmes
- 09184 Greifswald
- 09393 Lindenberg
- 09548 Meiningen
- 10035 Schleswig
- 10338 Hannover
- 10410 Essen
- 10739 Stuttgart
- 10868 München-Oberschleißheim
- 11035 Wien
- 11520 Praha-Libus
- 12374 Legionowo
- 12843 Budapest
- 13275 Beograd
- 16044 Udine
- 16080 Milano
- 16242 Roma

