

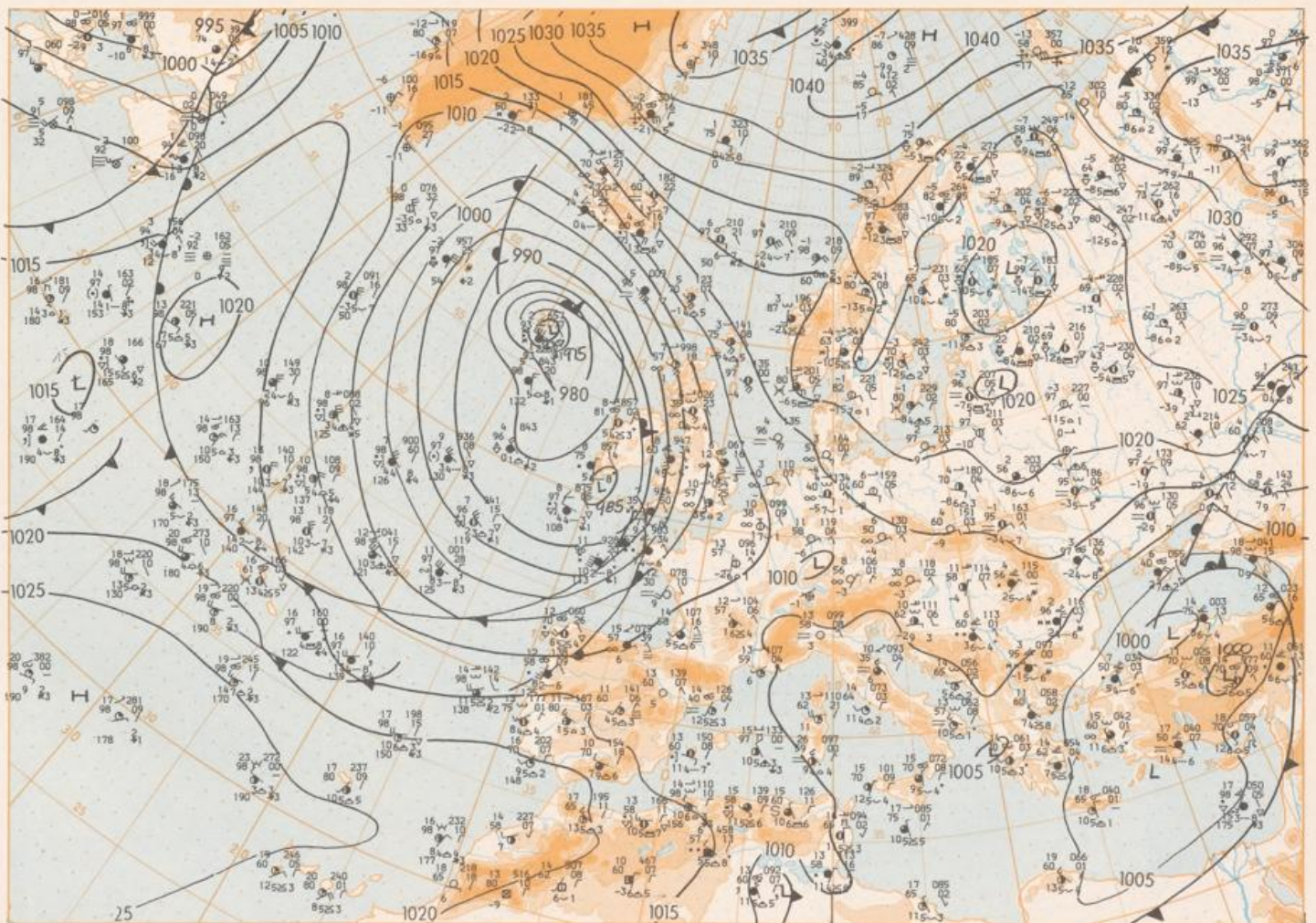
Europäischer Wetterbericht European Meteorological Bulletin Bulletin Météorologique Européen Boletín Meteorológico Europeo

Amisblatt des Deutschen Wetterdienstes

Druck und Verlag: Deutscher Wetterdienst — Zentralamt — D 6050 Offenbach am Main, Frankfurter Straße 135, Tel.: (0611) 80621

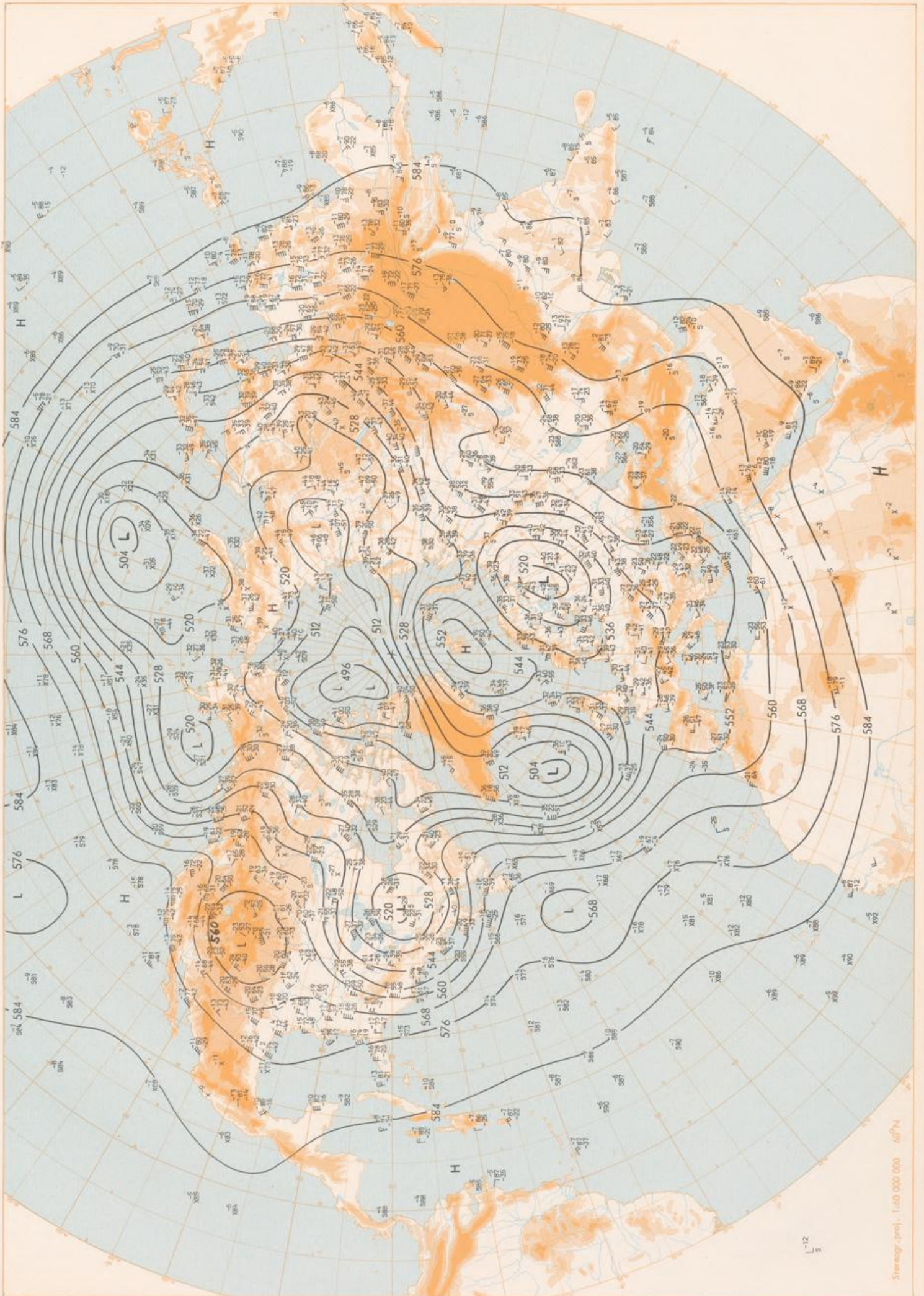
Er erscheint täglich Bezugspreis monatlich 30,00 DM zuzügl. Porto Nachdruck nicht gestattet	Issued daily Monthly price 30,00 DM plus postage All rights reserved.	Publié quotidiennement Prix mensuel 30,00 DM plus port Reproduction interdite	Se publica diariamente Precio de suscripción mensual 30,00 DM plus porte Se prohíbe la reproducción
Jahrgang Volume Volume Volumen	9	Freitag Friday Vendredi Viernes	23.03.1984
			Nummer Number Número Número
			83

Inhalt	Contenu	Contenu	Contenido
Bodenwertkarte 12 MGZ	Surface chart 12 GMT	Carte de surface à 12 TU	Análisis en superficie a las 12 T.M.G.
Bodenwertkarte Nordhemisphäre 00 MGZ	Surface chart northern hemisphere 00 GMT	Carte de surface sur l'hémisphère nord à 00 TU	Análisis en superficie hemisferio norte a las 00 T.M.G.
500 hPa-Fläche Nordhemisphäre 00 MGZ	500 hPa surface northern hemisphere 00 GMT	Surface 500 hPa sur l'hémisphère nord à 00 TU	Topografía de la superficie de 500 hPa hemisferio norte a las 00 T.M.G.
200 hPa-Fläche Nordhemisphäre 00 MGZ	200 hPa surface northern hemisphere 00 GMT	Surface 200 hPa sur l'hémisphère nord à 00 TU	Topografía de la superficie de 200 hPa hemisferio norte a las 00 T.M.G.
100 hPa-Fläche Nordhemisphäre 00 MGZ	100 hPa surface northern hemisphere 00 GMT	Surface 100 hPa sur l'hémisphère nord à 00 TU	Topografía de la superficie de 100 hPa hemisferio norte a las 00 T.M.G.
850 hPa 00 MGZ, 700 hPa 00 MGZ	853 hPa 00 GMT, 700 hPa 00 GMT	850 hPa 00 TU, 700 hPa 00 TU	850 hPa 00 T.M.G., 700 hPa 00 T.M.G.
Relative Topographie 500/1000 hPa 00 MGZ	Thickness chart 500/1000 hPa 00 GMT	Carte d'épaisseur 500/1000 hPa 00 TU	Espesor 500/1000 hPa 00 T.M.G.
300 hPa 00 MGZ	300 hPa 00 GMT	300 hPa 00 TU	300 hPa 00 T.M.G.
24h-Bodenwertschwärzung 00 MGZ	24 h surface pressure change 00 GMT	Variation du pression en 24 h (niveau mer) en hPa à 00 TU	Variación de la presión del nivel 24 h en hPa a las 00 T.M.G.
24h-Änderung relative Topographie 500/1000 hPa 00 MGZ	24 h thickness change 500/1000 hPa 00 GMT	Variation d'épaisseur 500/1000 hPa en 24 h à 00 TU	Variación de espesor 500/1000 hPa en 24 h a las 00 T.M.G.
Abschaltbare Diagramme 00 MGZ	Aerological diagrams 00 GMT	Diagrammes aérologiques 00 TU	Diagramas aerológicos 00 T.M.G.

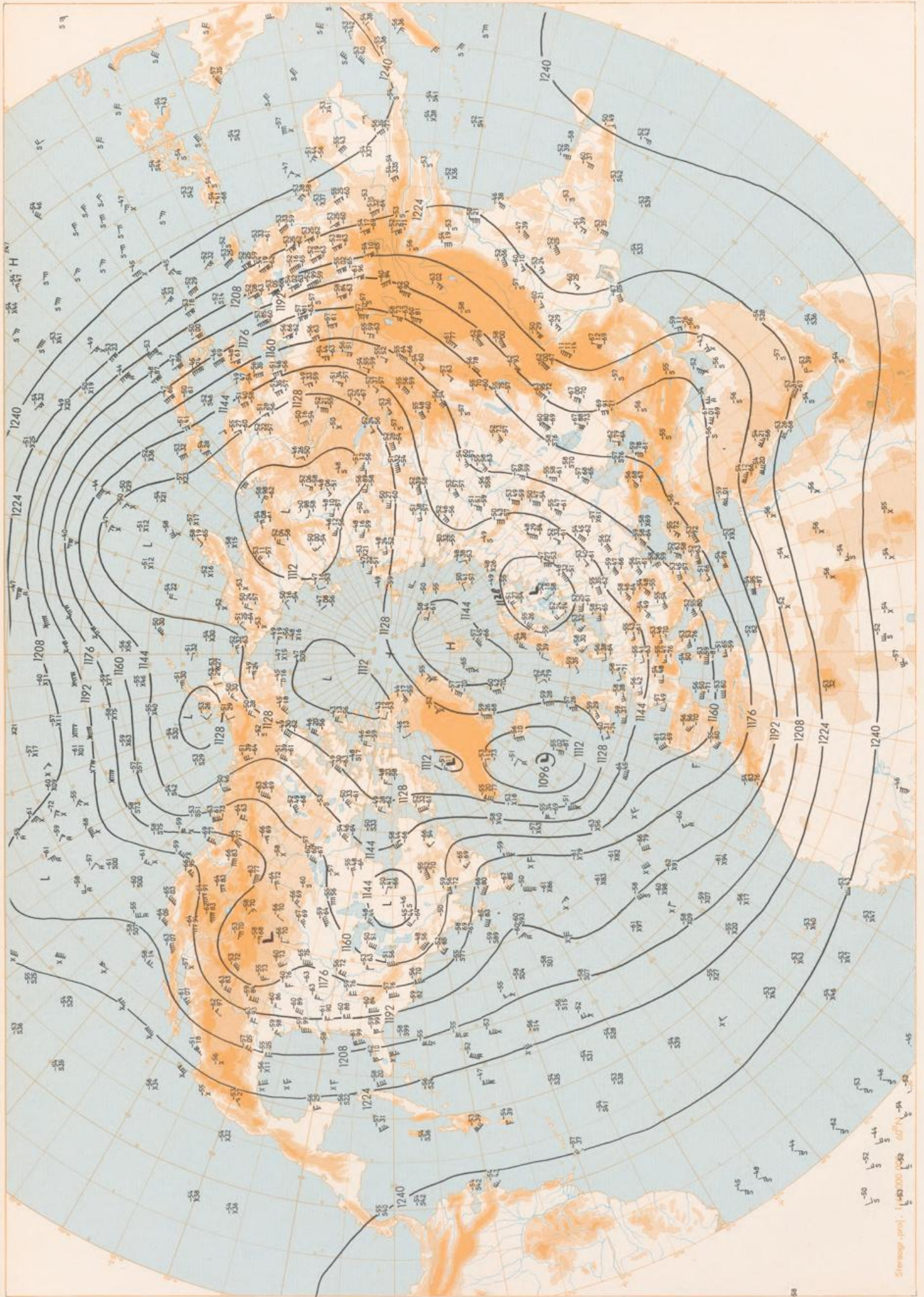


Stareogr. proj. 1:30 000 000 80°N

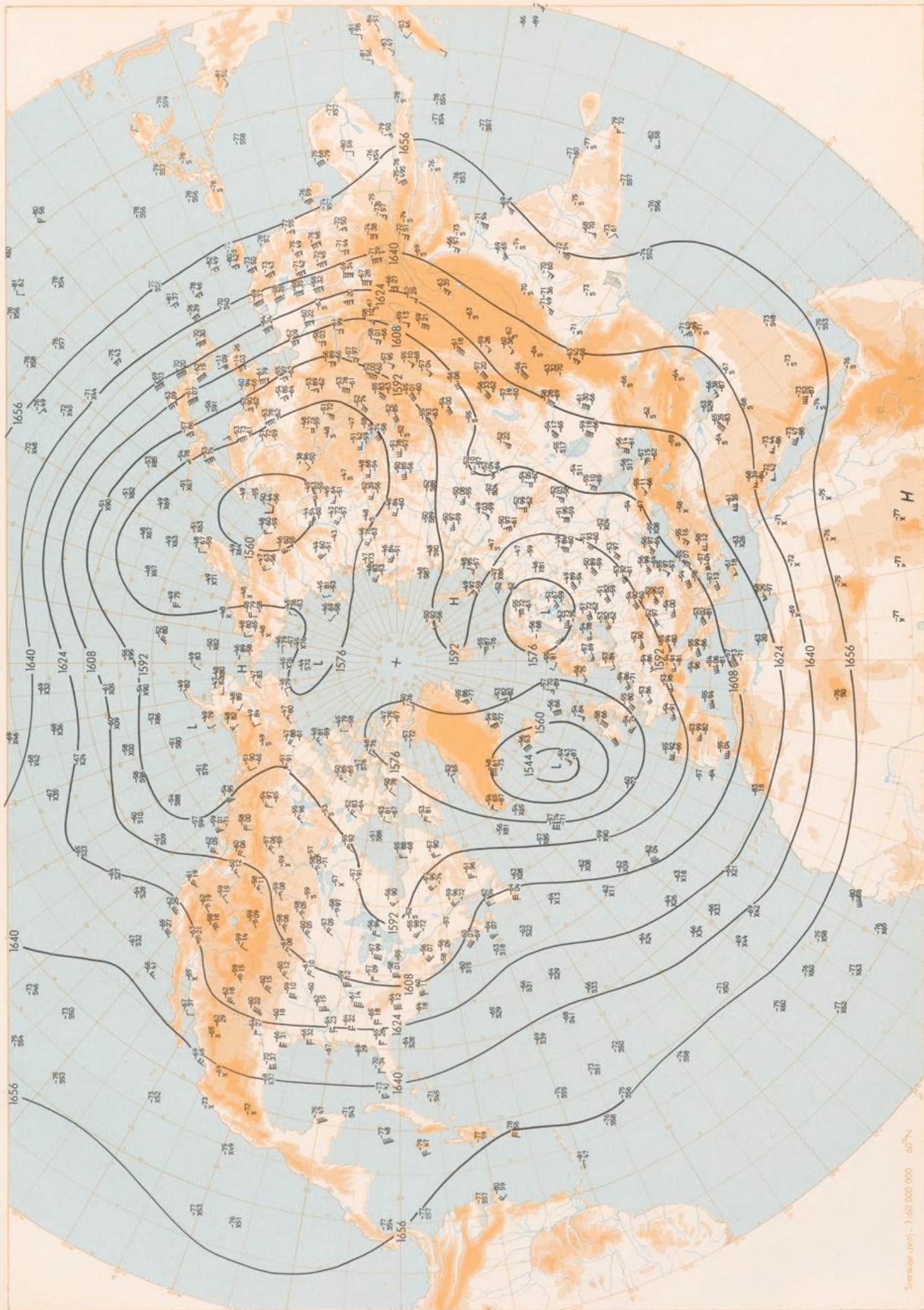
Surface chart 12 GMT



500 hPa 00 GMT



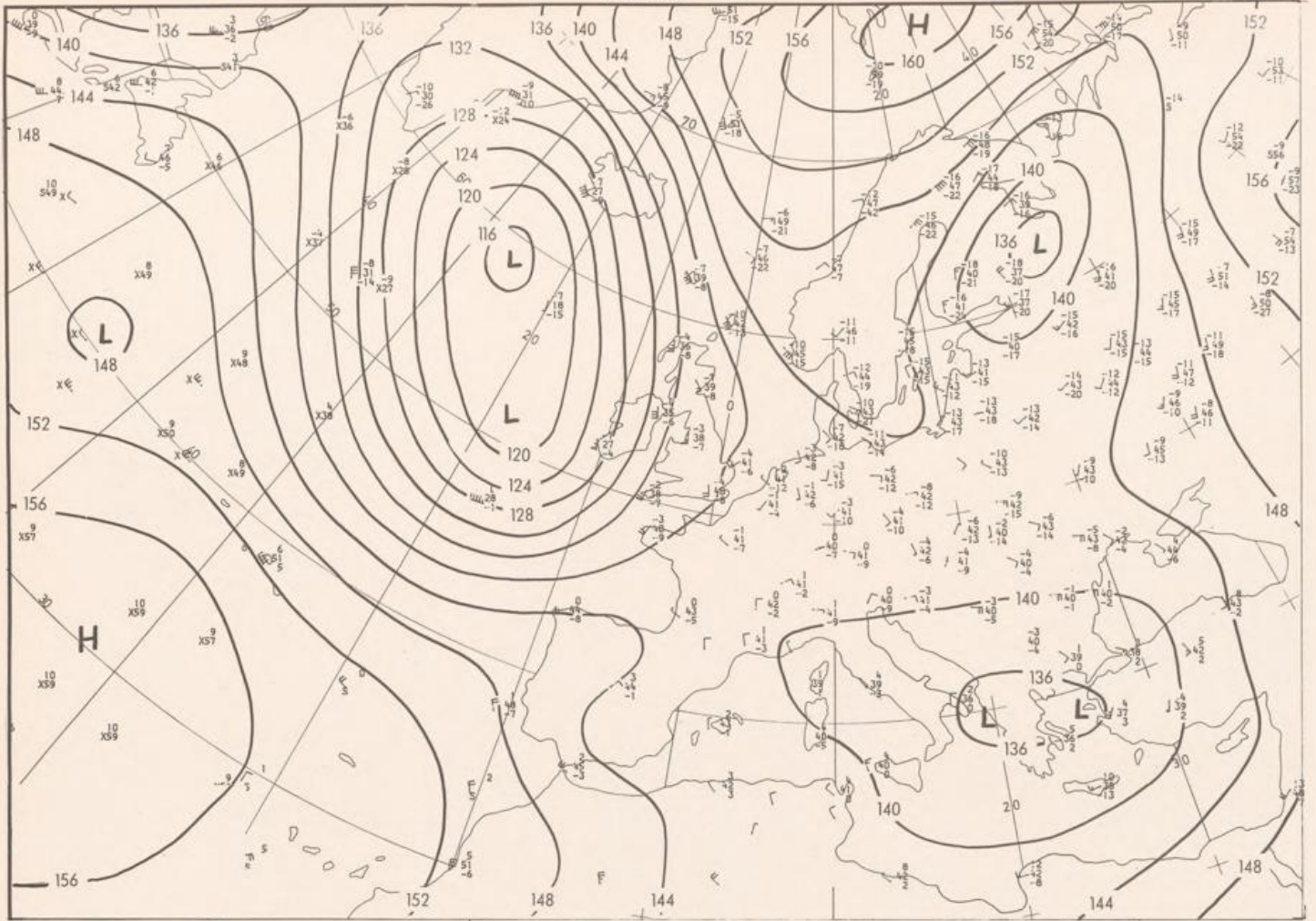
Scale 1:1000000



100 hPa 00 GMT

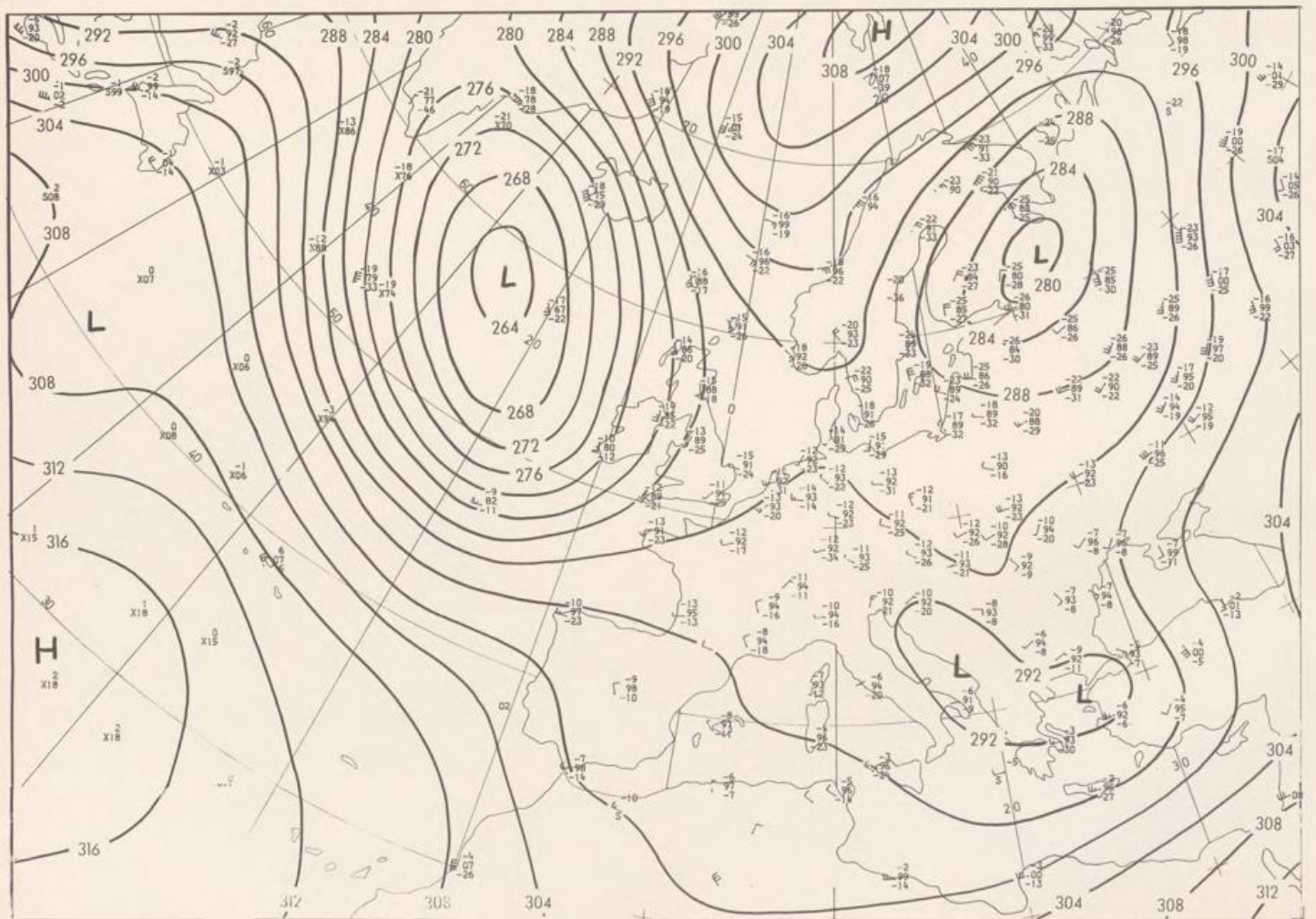
Scale: 1:60 000 000 60°N

23.03.1984

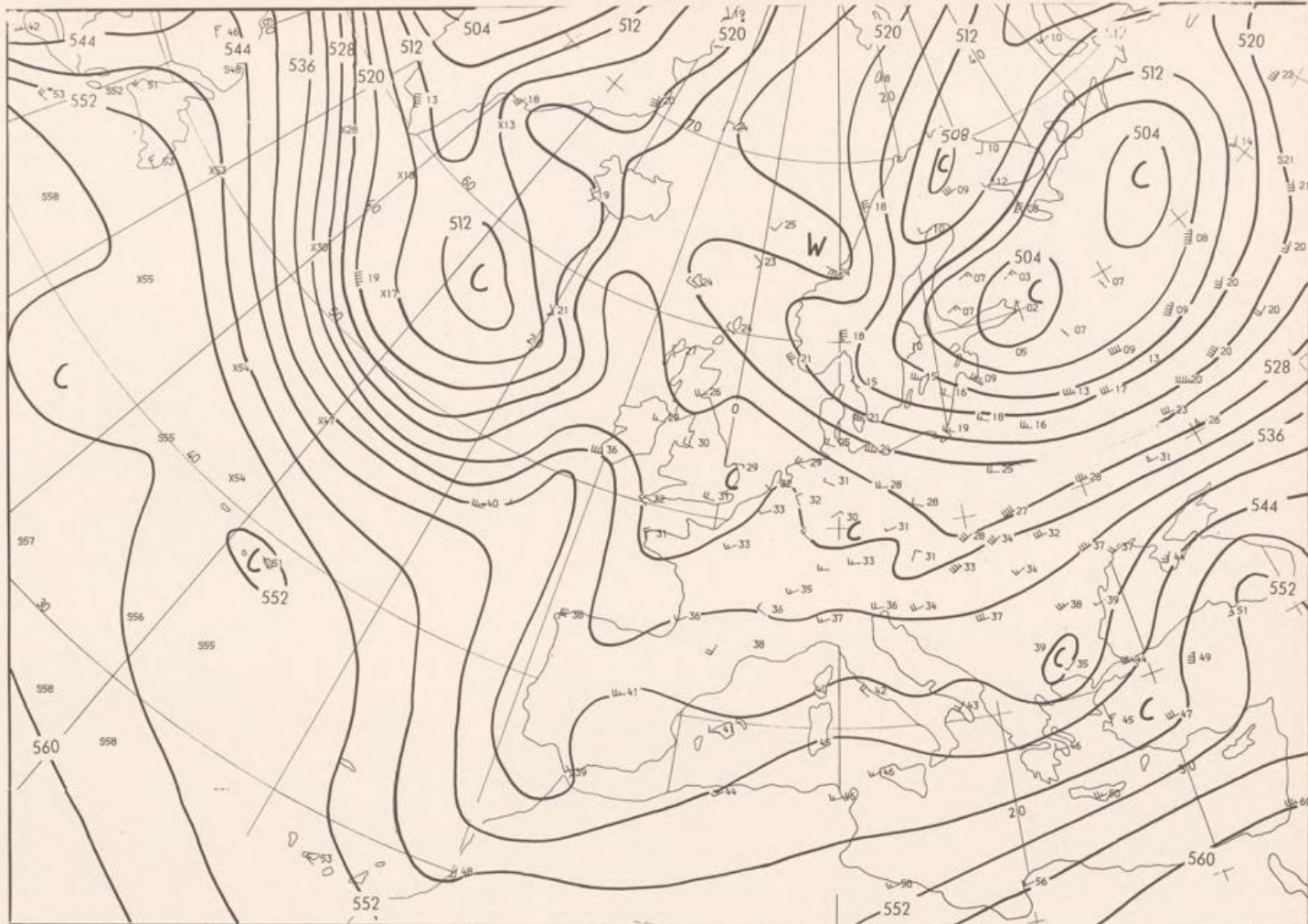


Stereogr. proj. 1:30 000 000 in 60°N

850 hPa 00 GMT

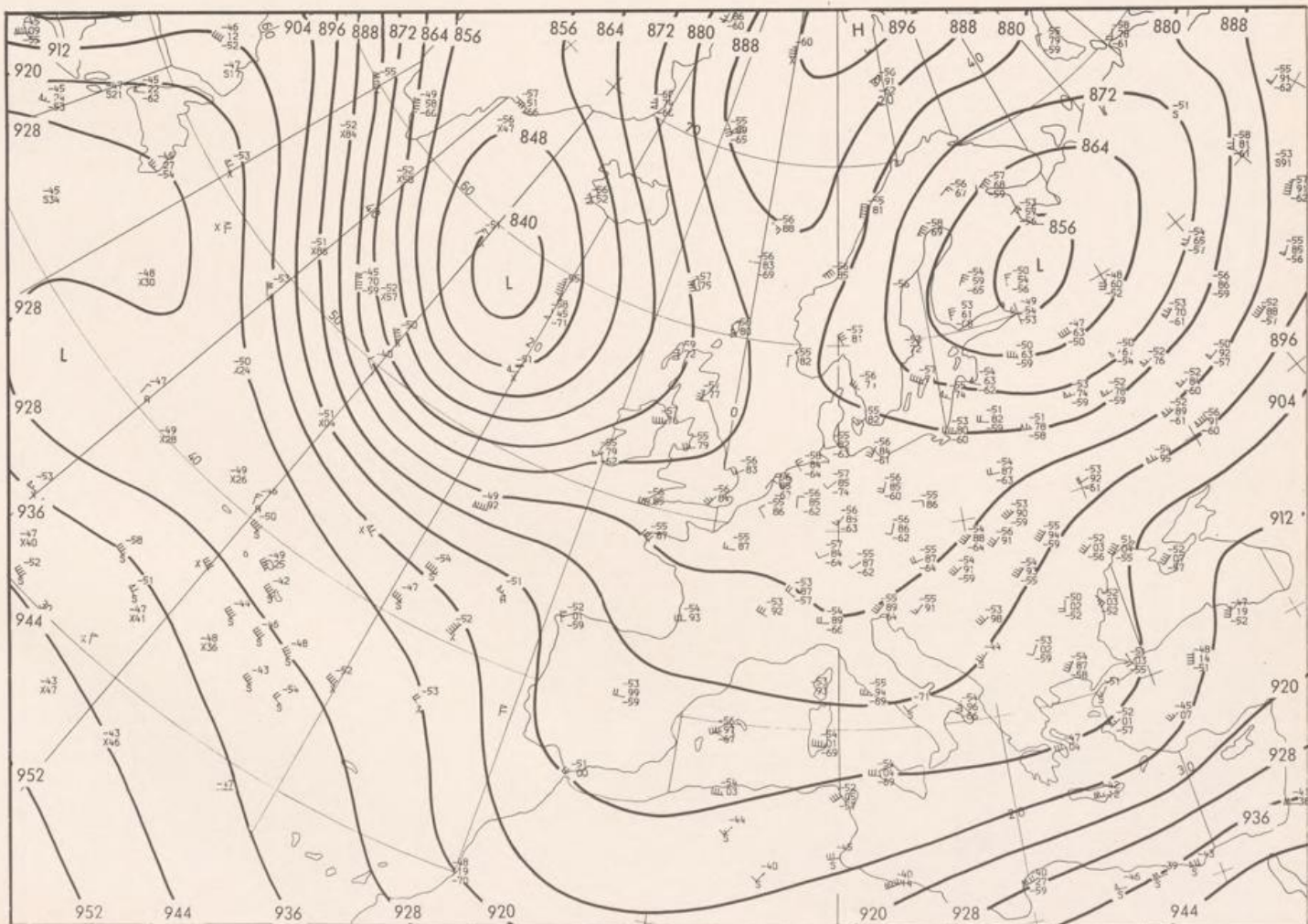


700 hPa 00 GMT



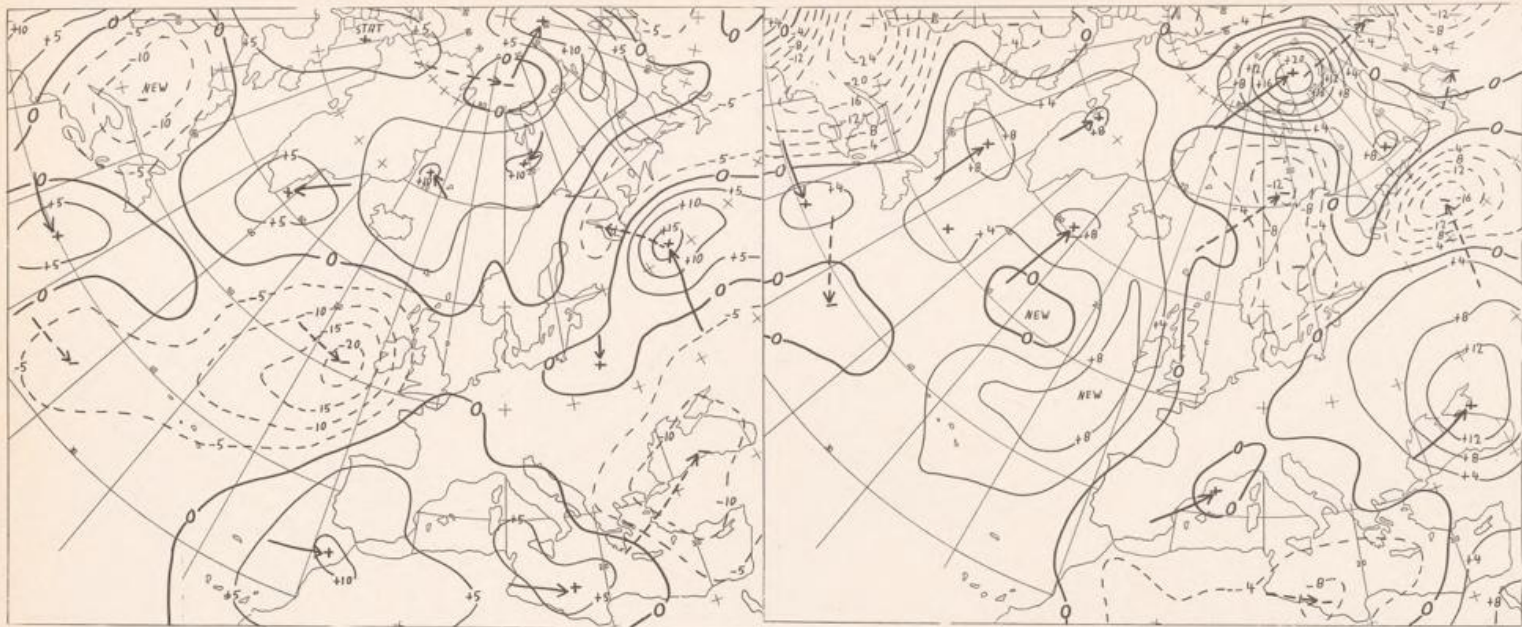
Stereogr. proj. 1:30 000 000 in 60°N

500/1000 hPa 00 GMT



300 hPa 00 GMT

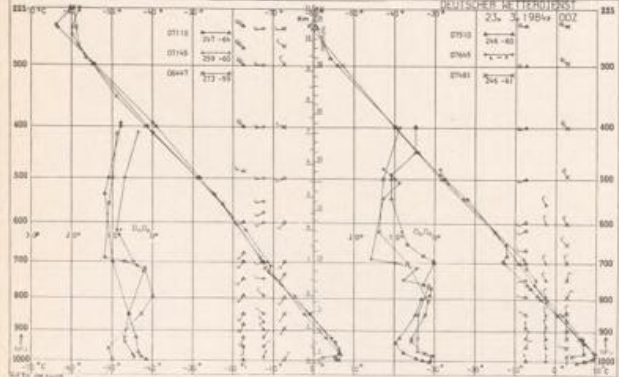
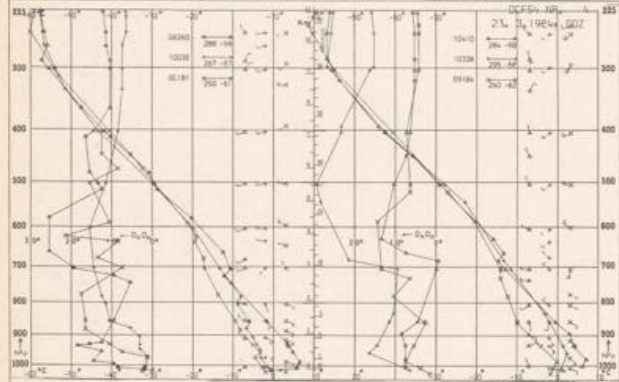
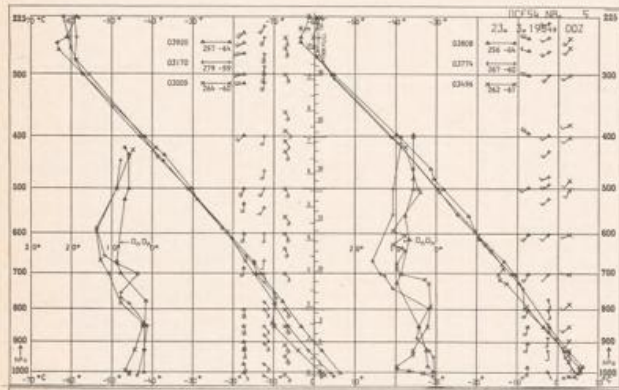
23.03.1984



Stereogr. proj. 1:60 000 000

24 hr surface pressure change 00 GMT

24 hr thickness change 00 GMT



Aerological Diagrams 00 GMT

- 01241 Orland
- 01384 Oslo
- 01415 Stavanger
- 02465 Stockholm
- 02527 Goteborg
- 03005 Lerwick
- 03170 Shanwell
- 03496 Hemsby
- 03774 Crawley
- 03808 Camborne
- 03920 Long Kesh
- 06181 Kobenhavn
- 06260 De Bilt
- 06447 Uccle
- 06610 Payeme
- 07110 Brest
- 07145 Trappes
- 07481 Lyon
- 07510 Bordeaux
- 07645 Nimes
- 09184 Greifswald
- 09393 Lindenberg
- 09548 Meiningen
- 10035 Schleswig
- 10338 Hannover
- 10410 Essen
- 10739 Stuttgart
- 10868 München-Oberschleißheim
- 11035 Wien
- 11520 Praha-Libus
- 12374 Legionowo
- 12843 Budapest
- 13275 Beograd
- 16044 Udine
- 16080 Milano
- 16242 Roma

