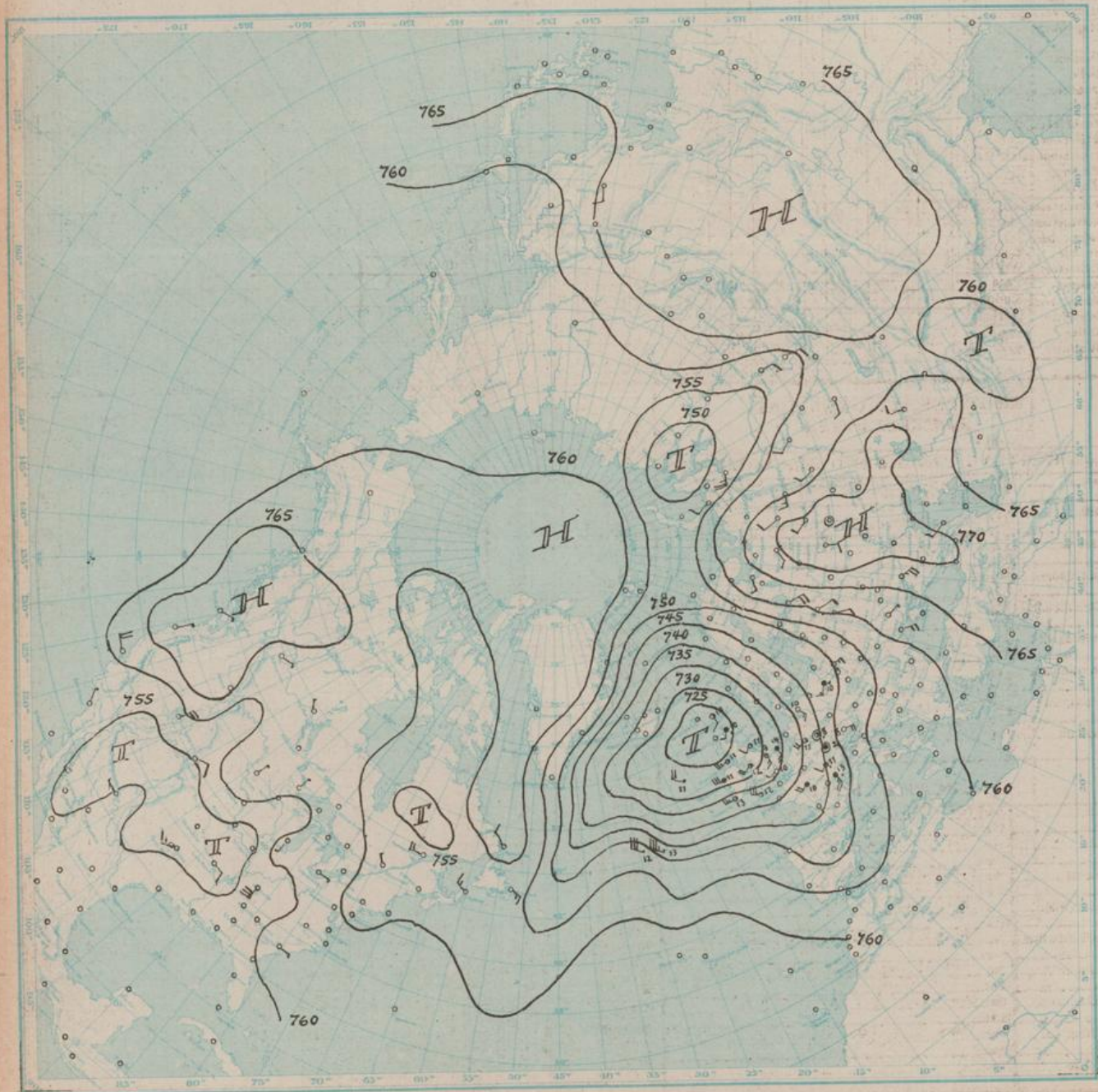
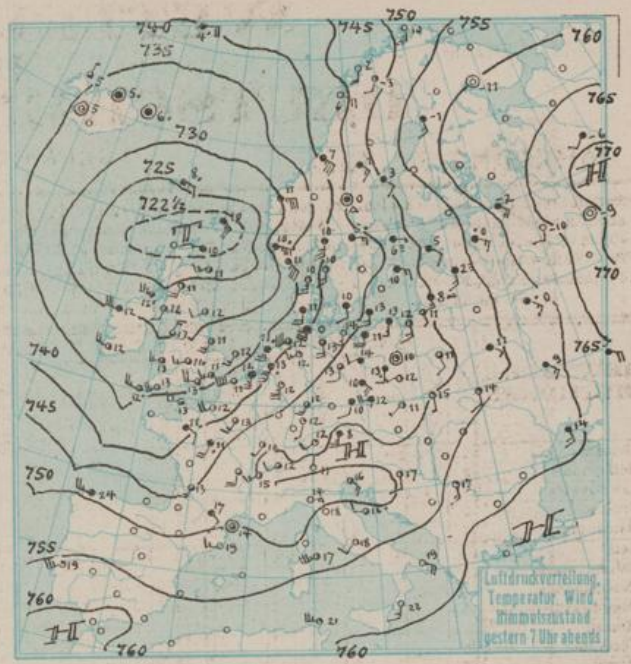
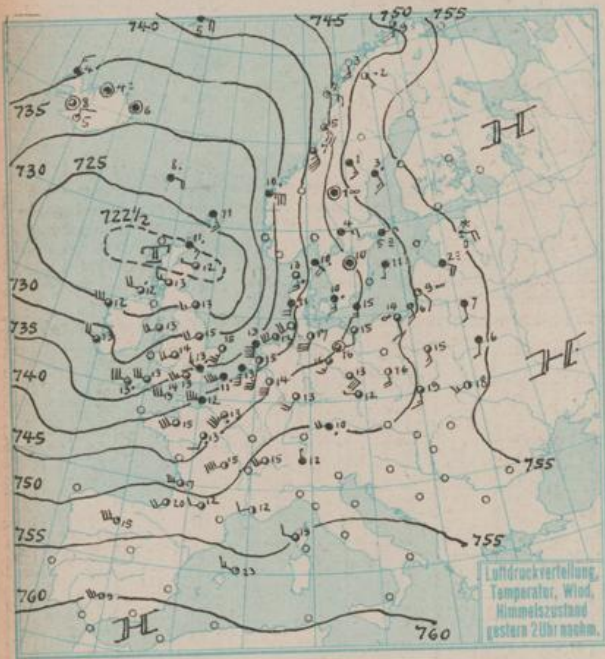




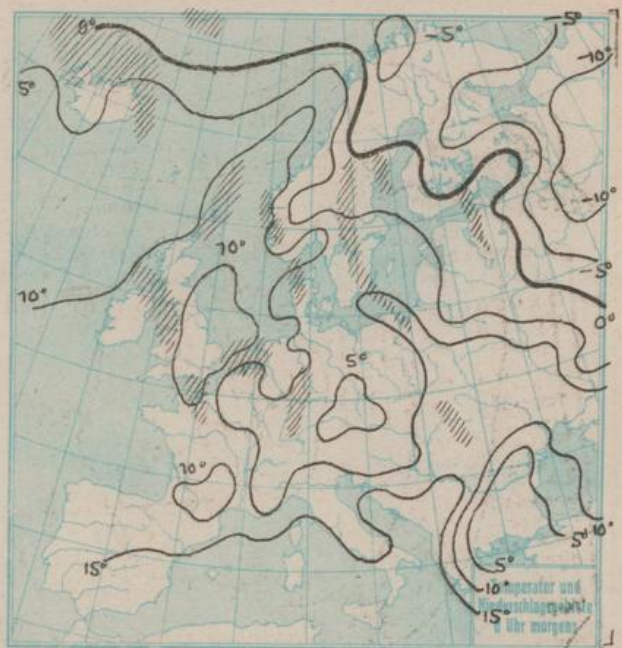
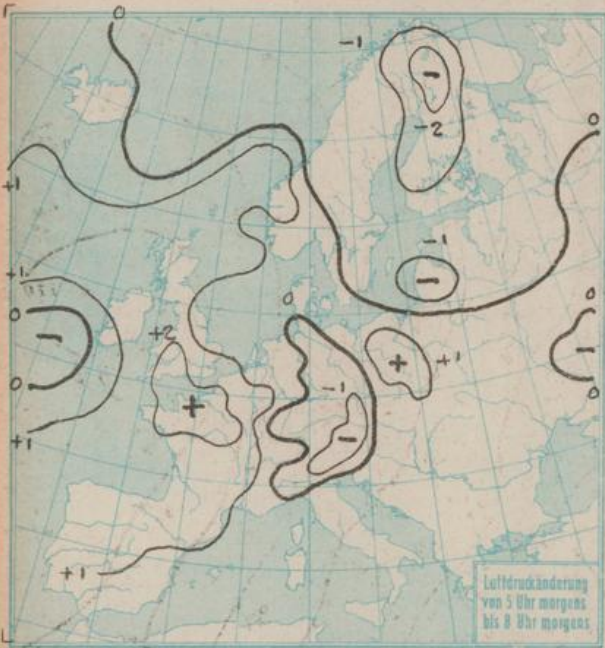
Sonnabend, den 24. Oktober 1925

DEUTSCHE



Luftdruck, Temperatur, Wind, Himmelszustand der nördlichen Halbkugel





NACH AUFEICHNUNGEN DER REGISTRIERAPPARATE ZU HAMBURG SEIT GESTERN 8 UHR MORGENS (M. E. Z.)

STUNDE	9	10	11	12m	1	2	3	4	5	6	7	8	9	10	11	12n	1	2	3	4	5	6	7	8		
Thermograph	14.8	15.1	15.8	16.8	17.1	17.0	15.6	15.2	14.6	13.5	12.6	12.6	11.9	11.3	11.1	11.1	10.1	9.6	9.3	9.2	9.0	8.8	8.2	7.9		
Barograph	38.1	38.0	38.1	38.2	37.9	38.2	38.2	38.4	38.6	39.1	39.3	39.5	39.6	39.7	39.8	39.7	39.6	39.4	39.2	39.5	39.1	39.1	39.1	39.0		
Anemograph	Richtung																									
	m. p. S.		10.0	7.0	7.5	8.6	8.7	11.0	10.3	6.8	7.5	7.7	6.3	6.6	7.5	6.8	6.7	6.5	6.0	4.1	4.5	4.8	4.6	4.8	3.2	3.0
Regenmesser																										
Sonnenscheindauer in Min	15	40	45	35		50	20	5																		

AUFSTIEGE

STATION	Wind in m./S.	Seehöhe	Zeit	Boden	200	500	1000	1500	2000	2500	3000	3500	4000	4500	5000	Bemerkungen	
<b>Nachträge:</b>																	
22. Oktober 1925																Sichtw. bis Kilom.	
Lindenberg		122m	4 <sup>h</sup> p	16.8; 70%	15.0; 70%	14.0; 70%	10.6; 70%	12.0; 11.8	10.6; 62%	7.3; 70%	3.3; 98%	2.0; 2.0	0.5; 90%	0.5; 82%	1.7; 80%	-2.6; 80%	" " 20 "
<b>23. Oktober 1925</b>																	
Lindenberg		122m	4 <sup>h</sup> p	SE 5	SSW 14	SW 23 9	SSW 12	SSW 14	SSW 14	SSW 14	ci	ci-cu	fr-ni	2h. 2 tr.		" " 50 "	
Dessau			10 <sup>a</sup>	S 3	S 7	S 10	SW 12	SW 18	SSW 21	1200	1200	1700	2000	2000	str. cu in 1800m	" " 10 "	
Fürth			10 <sup>a</sup>	SW 5		WSW 8	WSW 17	WSW 18	SE 25 20	1200	1200	1700	2000	2000		" " 50 "	
Hannover			11 <sup>a</sup>	SSW 4	SSW 18	SW 23 16	SW 23 16	SW 23 16	SW 23 16	1200	1200	1700	2000	2000	a-str	" " 20 "	
Leipzig			11 <sup>a</sup>	SS 4	SSW 4	S 4	SW 6	SW 6	SW 6	1100	1100	1700	2000	2000		" " 4 "	
Rostock		87m	6 <sup>h</sup> p	SE 4	SEW 13	SSW 16	SW 23 15	SW 23 15	SW 23 15	1100	1100	1700	2000	2000		" " 10 "	
Cranwell			2 <sup>h</sup> p		SWW 18	WSW 19	WS 13	WS 13	WS 13	1100	1100	1700	2000	2000		" " 10 "	
Felixstowe			2 <sup>h</sup> p		SW 16	WSW 8	SW 21	SW 19	SW 19	1100	1100	1700	2000	2000		" " 10 "	
Farnborough			2 <sup>h</sup> p		SW 7		WSW 13	WSW 16	WSW 16	1100	1100	1700	2000	2000		" " 10 "	
Duxford	Temper.		9 <sup>a</sup>		13; 85%	10; 95%	7; 95%	4; 95%	4; 95%	-20	-50		-120		-130	6000 -18	
Padua			7 <sup>h</sup> p	SE 3	S 3												
Rom			7 <sup>h</sup> p	SW 3		NNE 2	N 5									6000 WRN 7	
Malta			7 <sup>h</sup> p	SSW 2				WSW 6					WWW 8				
Dijon			7 <sup>h</sup> p	SW 2		SW 23 17	SW 23 18	SW 23 19									
Toulouse			7 <sup>h</sup> p	SSE 3		SE 12	SE 11	SW 13	SW 23 14			SW 23 21					
Holyhead			7 <sup>h</sup> p			WSW 9	W 10	WS 10									
Cranwell			7 <sup>h</sup> p	8 7		SW 18	SW 17	SW 13									
<b>Heute morgen:</b>																	
Grossborstel		17m	8 <sup>a</sup>	SE 4	SSE 9	S 12	S 11	SSW 17	1300	SSW 18			Wolken 1200m			" " 4 "	
Bachsen			7 <sup>a</sup>	SSW 12		SSW 11	SW 23 12	SW 23 12	1200	1200			a-str, cu-ni 500m			" " 10 "	
Leipzig			7 <sup>a</sup>	SE 3	SE 3	SSW 4	SW 23 15	SW 23 15	1200	1200			DO			" " 4 "	
Brandis			8 <sup>a</sup>	SE 7	SE 7	SSW 14	SW 17	SW 17	1300	1300			str-cu 800m			" " 10 "	
Dresden			7 <sup>a</sup>	ESE 3	ESE 3	SE 6	SE 7	SW 7	1200	1200			a-str			" " 10 "	
Breslau			8 <sup>a</sup>	SSE 1	SSW 6	SW 6	SW 6	SW 6	1000	1000			str-cu 1300m			" " 10 "	
Karlsruhe		130m	8 <sup>a</sup>	SW 3	SW 23 6	SW 23 15	SW 15	SW 15	1200	1200			ni 1270m			" " 20 "	
Rostock		37m	9 <sup>a</sup>	7.9; 93%	8.3; 70%		6.8; 60%	4.0; 60%	4.3; 82%	3.6; 82%						" " 20 "	
Lindenberg		122m	8 <sup>a</sup>	6.4; 92%	6.4; 92%	2.0; 78%	1.0; 78%	5.3; 60%	2.2; 64%	1.8; 64%			ci-str, a-str			" " 20 "	
Grossborstel		17m	12 <sup>a</sup>	SE 7	SSE 11	S 16	SSW 20	SSW 18	SE 11				ci			" " 4 "	
<b>Nachträge vom 23. Oktober 1925</b>																	
Lindenberg		122m	3 <sup>h</sup> p	13.3; 81%	13.8; 78%	10.0; 94%	6.3; 97%	7.4; 63%	3.2; 81%	1.4; 93%						" " 4 "	
Fahlsbüttel	Flügelzug		3 <sup>h</sup> p	20	990	1050	1820	2670	2940	3990	4300	4670	4790	5160	5520	5600	6100
				16.9; 50%	7.5; 75%	7.0; 68%	2.1; 68%	2.9; 58%	-2.6; 44%	-2.4; 53%	-4.0; 61%	-6.7; 50%	-6.4; 47%	-9.2; 39%	-21.6; 41%	-21.0; 41%	-25.6; 62%
				58	SSW 19	SSW 14	SSW 14	SSW 20	SSW 20	SSW 26	S 29	S 30	SSW 20	S 36	S 34	SSW 30	SSW 34

STATION	MORGEN										STATION	MORGEN													
	Luftdruck	Wind	Wetter	Temperat.	Luftdruck Charakter u. Ander.	W	Sichtweite in km	Wolken (in Zehntel)	Rel. Feucht.	Höhenzug		Minimum	Seegang	Luftdruck	Wind	Wetter	Temperat.	Luftdruck Charakter u. Ander.	W	Sichtweite in km	Wolken (in Zehntel)	Rel. Feucht.	Höhenzug	Minimum	Seegang
Wien	751.9	S 1	heiter	5	m 0				0	2	5		Rochefort	7											
Zürich	49	SE 1	heiter	7									Bayonne												
Bern													Bordeaux	46.4	WSW 1	SD	12	0	10	10	10	10	10	10	10
Genf	49.1	NW 1	13	9	+1.0	1	2.0	10	WS	8	6	10	Clermont	46.6	SHW	11	10	+1.0	10	10	10	10	10	10	10
Lugano	48.0	E 1	SI	11	-1.5	6	4	10	WS	6	6	6	Dijon	43.3	W 2	11	10	+2.0	10	10	10	10	10	10	10
Heider	35.9	SSE 3	SI	10	-1.0	6	4	10	WS	0	5	-1	Calais	36.8	SW 2	11	10	+1.0	10	10	10	10	10	10	10
Vlissingen	36.2	WSW 3	41	10	+0.5	6	10	10	WS	9	7	-1	Brest												
Utrecht	36.4	SSE 3	SD	10	-1.0	5	2.0	10	WS	9	6	10	Paris	41.4	SW 5	30	10	5	4	10	10	10	10	10	10
Kopenhagen	44.5	S 3	00	10	+0.5	2	10	4	WS	7	0	-1	Perpignan	49.3	NW 2	01	13	+2.0	10	10	10	10	10	10	10
Skagen	41.6	SSE 3	11	9	-0	3	10	10	WS	9	0	-1	Rennes												
Hansholm	38.9	SSE 3	30	9	0	6	4	10	WS	0	1	-1	Strasbourg	45.7	SSE 4	11	10	+1.0	10	10	10	10	10	10	10
Blaavandshuk	39.1	S 4	16	9	+1.0	5	2.0	10	WS	1	1	-1	Toulouse	52.0	SE 1	01	9	+1.0	10	10	10	10	10	10	10
Hammershus	45.1	SSW 3	16	10	0	3	2.0	10	WS	0	7	-1	Tours	44.4	SSW 2	11	10	+1.5	10	10	10	10	10	10	10
Abisko	48.3	SW 2	11	-5	-0	0	2.0	10	WS	7	0	-8	Ajaccio	48.5	SW 5	11	19	-3.0	10	10	10	10	10	10	10
Haparanda													Le Havre	39.5	WSW 5	SD	11	+	10	10	10	10	10	10	10
Stensele													Marignane	48.2	W 4	11	13	+1.0	10	10	10	10	10	10	10
Oestersund	48.6	SE 2	SD	1	-0	6	10	10	WS	0	2	1	Nancy	73.8	SSW 3	25	9	+1.5	10	10	10	10	10	10	10
Hernösand	49.1	ESE 3	55	4	+0.5	6	2.0	10	WS	9	3	-1	Lerwick	27.2	S 2	40	11	+2.0	2	10	10	10	10	10	10
Särna	45.3	SHW	49	1	-0	6	1	10	WS	0	15	0	Renfrew	30.0	WSW 3	13	11	+1.0	5	10	10	10	10	10	10
Karlstad	44.1	E 2	55	8	-0	6	-10	10	WS	9	15	5	Cranwell	34.9	WSW 3	12	9	+1.0	1	10	10	10	10	10	10
Stockholm	46.8	SE 1	27	8	-0	6	0.2	10	WS	0	2	6	Scilly	39.6	W 6	01	11	+1.0	0	10	10	10	10	10	10
Jonköping	44.7	SE 1	55	8	-0	3	4	10	WS	0	3	7	Wick	26.6	SW 3	11	10	+1.0	2	10	10	10	10	10	10
Wlaby	45.6	SE 4	27	8	-0.5	4	0.6	10	WS	0	0.1	-1	Malinhead	29.8	W 5	35	11	+1.0	5	10	10	10	10	10	10
Kalmar	45.4	SW 1	55	8	0	6	-10	10	WS	0	5	-1	Tynemouth	31.3	SW 2	01	9	+1.0	0	10	10	10	10	10	10
Gällivare	51.5	SW 2	11	-2	-0	2	2.0	10	WS	9	0	-3	Pembroke	35.8	W 4	00	12	+1.0	5	10	10	10	10	10	10
Karlshamm													Roches Point	37.8	WSW 3	10	10	+1.0	1	10	10	10	10	10	10
Bjuröklubb													Croydon	36.8	WSW 3	12	9	+1.0	0	10	10	10	10	10	10
Quade Hook													Aberdeen	28.4	SW 2	11	10	+1.0	0	10	10	10	10	10	10
Spitzbergen													Valentia	37.0	WSW 4	11	11	-0	2	10	10	10	10	10	10
Ingö													Plymouth	39.0	S 4	01	12	+1.5	5	10	10	10	10	10	10
Valdersund	39.0	SE 6	10	2	+1.0	1	5.0	7	WS	6	0	-1	Guernsey	40.1	W 5	11	12	-	1	10	10	10	10	10	10
Kinn	34.2	ESE 7	11	12	+1.0	6	SD	10	WS	6	1	-1	Stornoway												
Lister	37.0	SE 5	11	10	+1.0	6	10	10	WS	0	6	-1	Holyhead	34.0	WSW 5	44	11	+1.0	1	10	10	10	10	10	10
Bären-Insel	48.3	SW 3	11	-3	-0.5	2	2.0	10	WS	9	0	-1	Donaghadee												
Andänes													Yarmouth	36.0	WSW 1	02	8	-0	0	10	10	10	10	10	10
Röst	42.3	E 5	11	7	-0.5	2	2.0	10	WS	8	0	-1	Blackspot	32.7	W 4	11	10	+1.0	5	10	10	10	10	10	10
Jan Mayen	41.8	ENE 5	SD	4	+0.5	6	2.0	10	WS	8	2	-1	Calshot	37.6	W 3	11	9	+2.5	0	10	10	10	10	10	10
Färder	41.7	SSE 4	11	7	+0.5	2	SD	10	WS	0	13	-1	Thorshavn	23.5	SHW	16	8	-0	5	10	10	10	10	10	10
Vardö													Seydisfjord	32.1	SHW	41	6	-0	6	10	10	10	10	10	10
Brönnö	41.9	SE 6	16	7	-1.0	5	2.0	10	WS	8	0	-1	Acureyri	38.1	N 1	55	5	+0.5	6	10	10	10	10	10	10
Utsire	35.1	SE 6	53	10	+0.5	6	10	10	WS	9	13	-1	Isafjord	38.4	N 5	41	4	+0.5	6	10	10	10	10	10	10
Dombas	41.6	S 2	17	3	+1.0	7	SD	9	WS	0	0.6	-1	Reykjavik	33.7	SSE 2	12	3	+0.5	0	-	8	10	10	10	10
Helsingfors													Vestmannö												
Vasa	52.4	SE 4	10	1	-1.0	2	2.0	10	WS	0	7.9	-1	Alexandrovsck												
Kuopio	57.9	S 1	11	-2	-1.5	-2	10	WS	9	-			Archangelsk	66.6	SSW 3	11	bed.	-9	+0.6						
Dorpat	55.3	SE 3	12	1	-0.1					0	2	-1	Ust-Zyima	64.3	NW 3	bed.	-9	+1.2							
Riga	51.3	SE 5	29	3	-1.0	4	1	10	WS	0	0	-1	Matochkin-Sharr	60.0	WSW 7	bed.	-2	+0.3							
Warschau	49.3	SSW 2	11	12	+0.5	2	10	10	WS	8	0	-1	Diekson												
Lemberg	54.5	S 2	11	12	-0	1	4	8	WS	7	0	-1	Petersburg	59.5	SE 4	bed.	-9	-0.2							
Pinsk													Tscherdyn	55.8	W 3	bed.	-6	+1.0							
Wilna													Moskau	68.1	E 4	bed.	-4	-0.4							
Krakau	52.8	W 1	11	12	+1.0	1	4	9	WS	8	0	-1	Kasan	74.3	SHW	bed.	-5	+1.5							
Posen	49.0	S 3	03	9	+1.0	0	10	1	WS	9	5	8	Kiew	58.4	SE 3	bed.	11	-0							
Prag	48.4	SE 1	01	8	-1.0	6	2.0	10	WS	8	3	7	Ufa	69.1	NW 4	wolkig	-8	+2.6							
Eger	48.4	SE 1	01	4	-0.5	6	2.0	10	WS	8	2	-1	Saratow	74.8	NW 1	heiter	-8	+0.7							
Preßburg	51.2	SHW	11	7	-0	6	2.0	10	WS	9	1	6	Orenburg	70.3	NW 2	klar	-5	+1.0							
Kaschau	53.0	SHW	16	4	-0	5	10	10	WS	9	0.4	10	Odessa	59.1	SE 4	klar	13	-0							
Olmütz	51.3	ENE 1	23	7	+0.5	4	1	10	WS	0	0	-1	Sewastopol												
Budapest	52.1	SE 1	bed.	3	-0.2					7	11	-1	Astrachan	71.6	N 2	Regen	-	+1.8							
Belgrad	52.3	S 2	16	15	-0	5	SD	10	WS	7	2	13	Emba	70.8	SE 1	Schnee	-2	+0.3							
Sarajewo	52.6	SE 2	11	15	-0	1	2.0	10	WS	7	0	14	Batum												
Agram	52.4	W 3	00	15	+0.5	5	2	10	WS	8	1	12	Baku												
Sofia	61.0	SHW	bed.	5	-0					0	4	-1	Tobolsk	63.4	WSW 1	bed.	-5	+0.2							
Athen													Omsk												
Kortu													Tashkent	52.1			11	+0.9							
Turin	57.4	N 2	43	11	-2.0	6	0.5	10	WS	9	6	9	V. Imbatskoe												
Genua													Tomsk	52.7	S 1	Regen	6	-2.5							
Livorno													Irkutsk												
Ancona													Jakutsk												
Maddalena	50.9	SW 2	12	19	-0.5	9	10	6	WS	7	0	-1	Wladivostok	62.2	SHW	klar	-	0							
Messina													Tanger	61.2	W 2	heiter	2								
Tarent													Agadir												
Venedig													Bou Denb												
Rom	53.9	SE 4	11	14	-0	2	10	9	WS	9	0	-1	Oran												
Malta	52.7	S 1	02	2																					

STATION	GESTERN NACHMITTAG					GESTERN ABEND					STATION	GESTERN NACHMITTAG					GESTERN ABEND									
	Luftdruck	Wind	Wetter	Temperat.	W	Luftdruck	Wind	Wetter	Temperat.	W		Luftdruck	Wind	Wetter	Temperat.	W	Luftdruck	Wind	Wetter	Temperat.	W					
Wien											Turin															
Zürich	750	SW	10	12	6	740	SW	Wolkig	12	11																
Bern	50	SW	10	12	6	51	SW	10	12	6																
Gent																										
Lugano																										
Helder	35	SW	11	13	10	36	SW	11	13	10																
Blissingen	37	SW	12	13	10	38	SW	12	13	10																
Utrecht	37	SW	12	15	10	38	SW	12	15	10																
Kopenhagen	43	SW	12	15	10	44	SW	12	15	10																
Skagen	39	SW	12	15	10	40	SW	12	15	10																
Hanstholm	37	SW	12	15	10	38	SW	12	15	10																
Blaavandshuk	37	SW	12	15	10	38	SW	12	15	10																
Hammershus	44	SW	12	15	10	45	SW	12	15	10																
Abisko	50	SW	12	15	10	51	SW	12	15	10																
Haparanda																										
Stenseie																										
Oestersund	50	SW	12	15	10	51	SW	12	15	10																
Hernösand	52	SW	12	15	10	53	SW	12	15	10																
Särna	47	SW	12	15	10	48	SW	12	15	10																
Karlstad	45	SW	12	15	10	46	SW	12	15	10																
Stockholm	46	SW	12	15	10	47	SW	12	15	10																
Jönköping	44	SW	12	15	10	45	SW	12	15	10																
Wisby	47	SW	12	15	10	48	SW	12	15	10																
Kalmar	46	SW	12	15	10	47	SW	12	15	10																
Gällivare	53	SW	12	15	10	54	SW	12	15	10																
Karlskamm																										
Bjuröklubb	55	SW	12	15	10	56	SW	12	15	10																
Quade Hook																										
Spitzbergen	47	SW	12	15	10	48	SW	12	15	10																
Ingo	52	SW	12	15	10	53	SW	12	15	10																
Valdersund	39	SW	12	15	10	40	SW	12	15	10																
Kinn	24	SW	12	15	10	25	SW	12	15	10																
Lister	35	SW	12	15	10	36	SW	12	15	10																
Bären-Insel	52	SW	12	15	10	53	SW	12	15	10																
Andanes	48	SW	12	15	10	49	SW	12	15	10																
Röst	46	SW	12	15	10	47	SW	12	15	10																
Jan Mayen	41	SW	12	15	10	42	SW	12	15	10																
Färder																										
Vardö																										
Brönnö	29	SW	12	15	10	30	SW	12	15	10																
Ötsire																										
Dombas																										
Heisingfors																										
Vasa																										
Kuopio																										
Dorpat	59	SW	12	15	10	60	SW	12	15	10																
Riga	51	SW	12	15	10	52	SW	12	15	10																
Warschau	56	SW	12	15	10	57	SW	12	15	10																
Lemberg	39	SW	12	15	10	40	SW	12	15	10																
Pfinsk	52	SW	12	15	10	53	SW	12	15	10																
Wilna	52	SW	12	15	10	53	SW	12	15	10																
Krakau	52	SW	12	15	10	53	SW	12	15	10																
Posen	47	SW	12	15	10	48	SW	12	15	10																
Prag	48	SW	12	15	10	49	SW	12	15	10																
Eger																										
Freiburg	49	SW	12	15	10	50	SW	12	15	10																
Kaschau	53	SW	12	15	10	54	SW	12	15	10																
Obnütz	49	SW	12	15	10	50	SW	12	15	10																
Budapest																										
Belgrad																										
Serajewo																										
Agram																										
Sofia																										
Athen																										
Korfu																										
				</																						