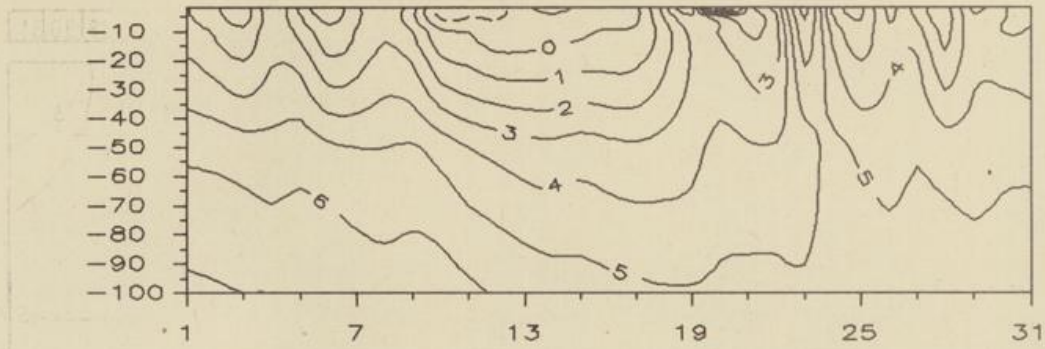
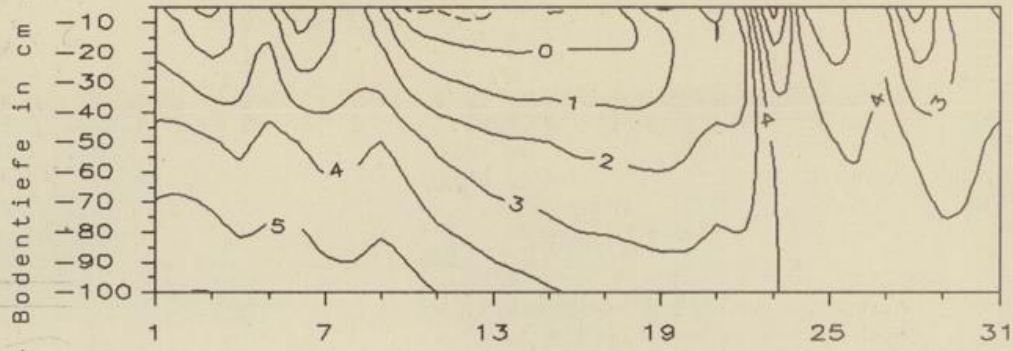


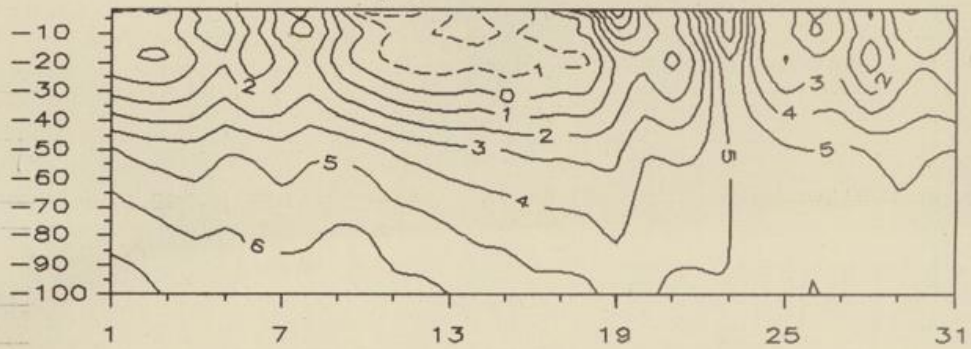
Temperaturverlauf in unbewachsenem Boden, Grad C
Uelzen (sand. Lehm) Dezember 1991



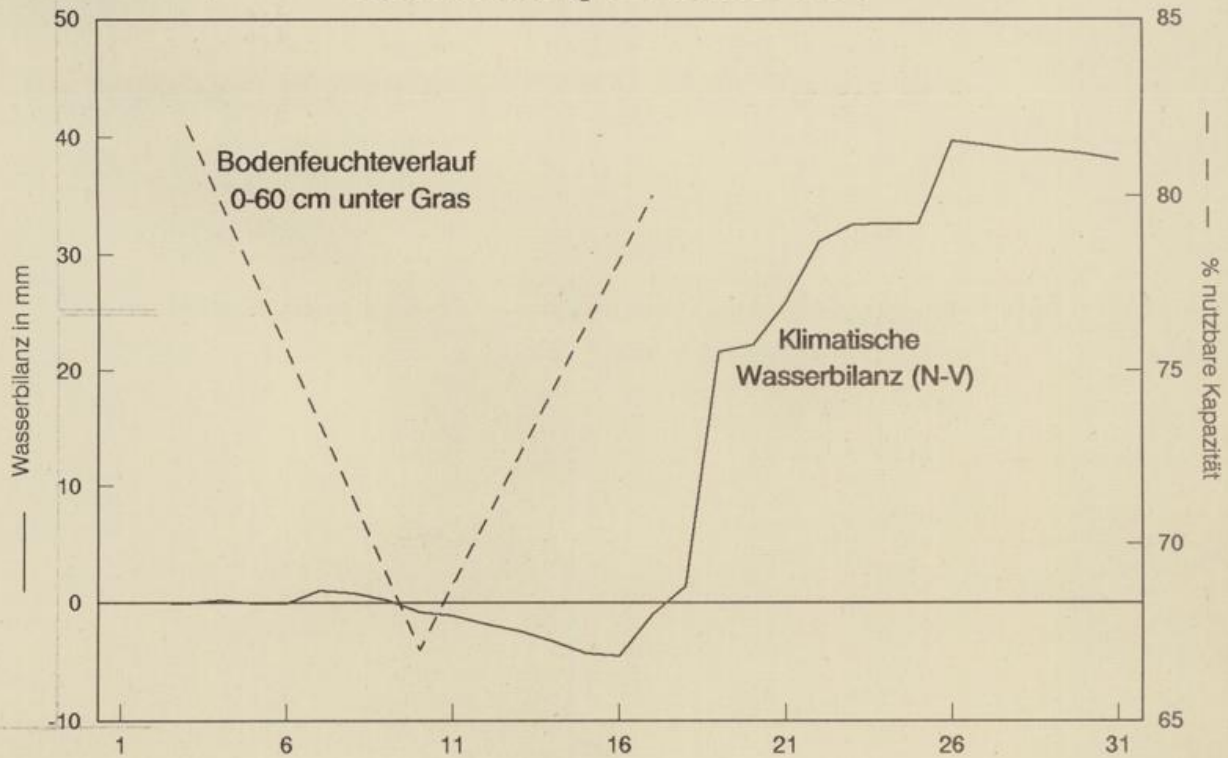
Braunschweig (lehm. Sand) Dezember 1991



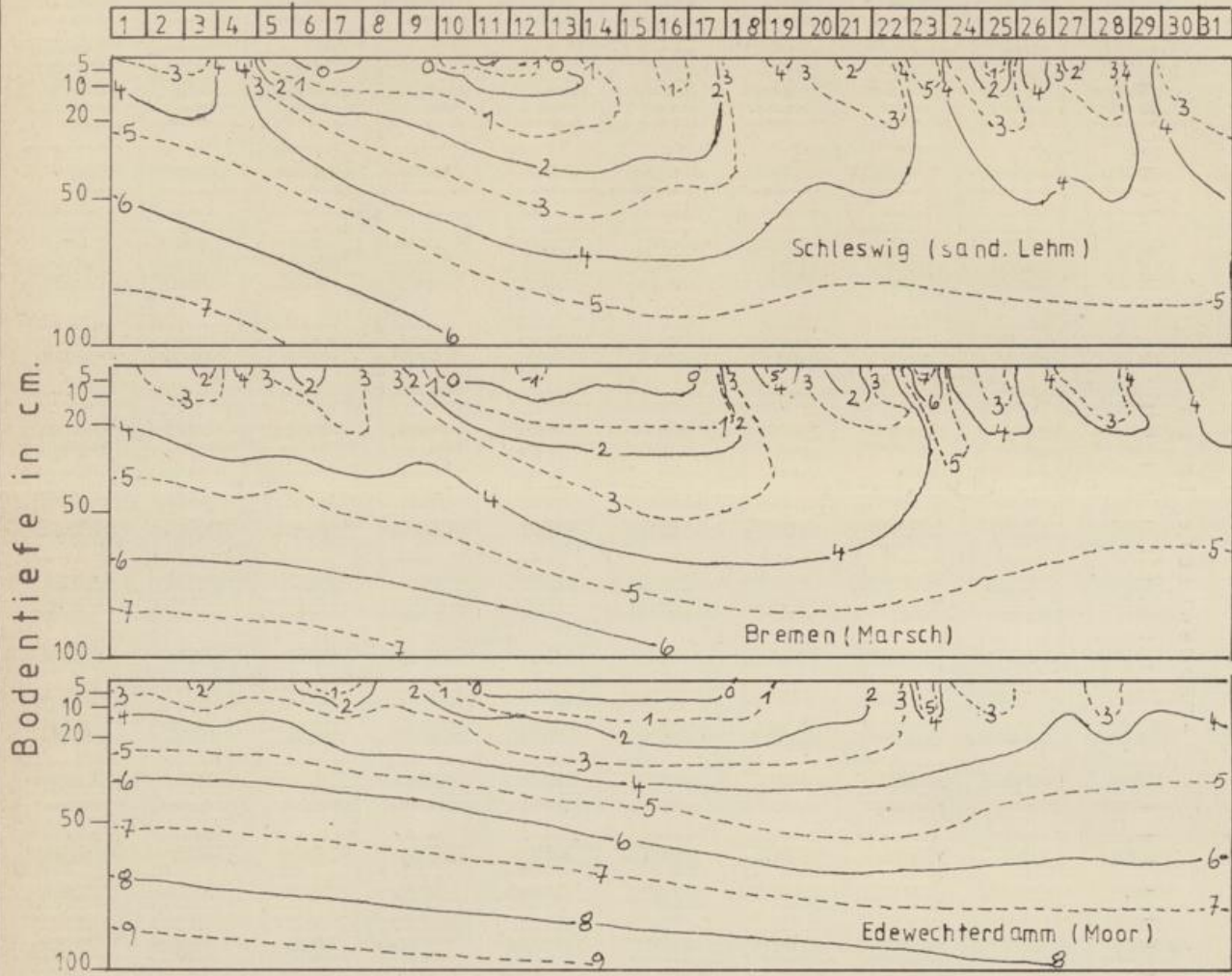
Bückerburg (sand. Lehm) Dezember 1991



Braunschweig Dezember 1991



Temperaturverlauf in unbewachsenen Böden i.°C. Dezember 1991



Bodenfeuchteverlauf in 0-60cm. unter Gras

