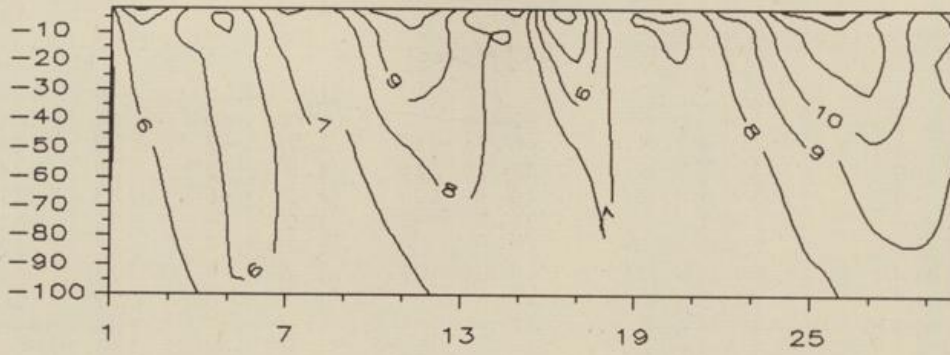
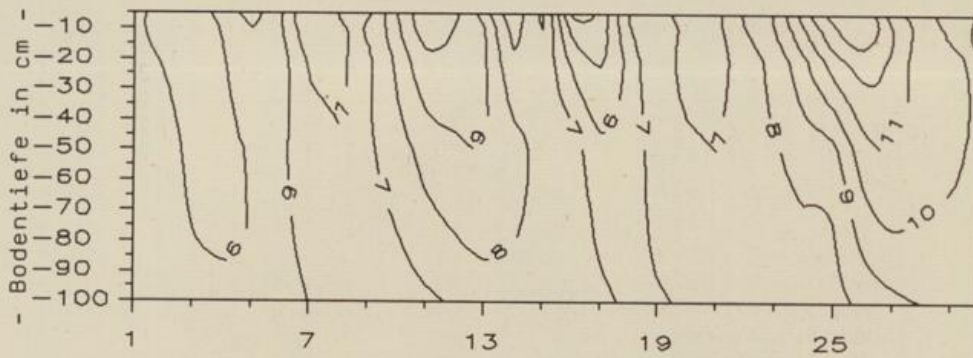


Temperaturverlauf in unbewachsenem Boden, Grad C

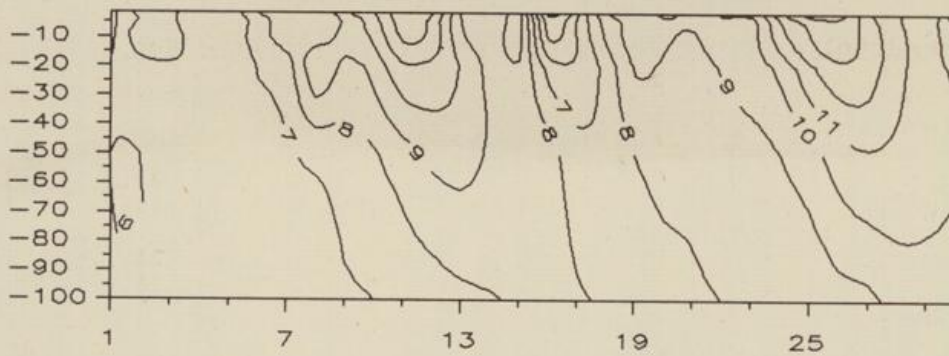
Uelzen (sand. Lehm) April 1992



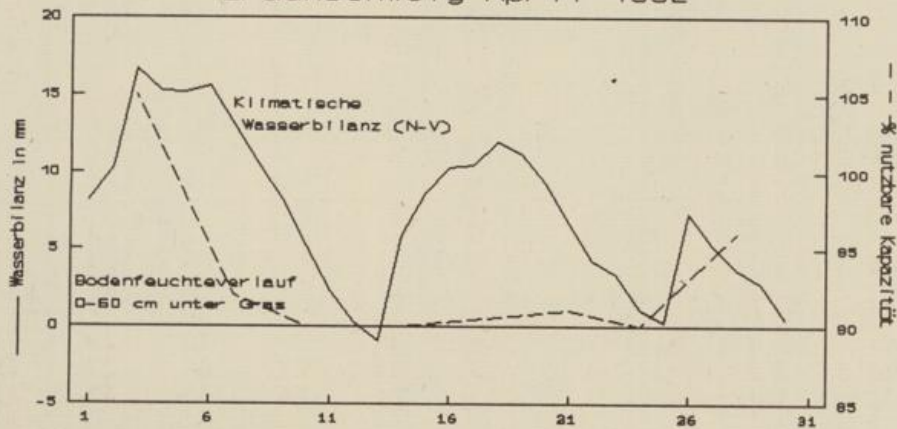
Braunschweig (lehm. Sand) April 1992



Bückeburg (sand. Lehm) April 1992

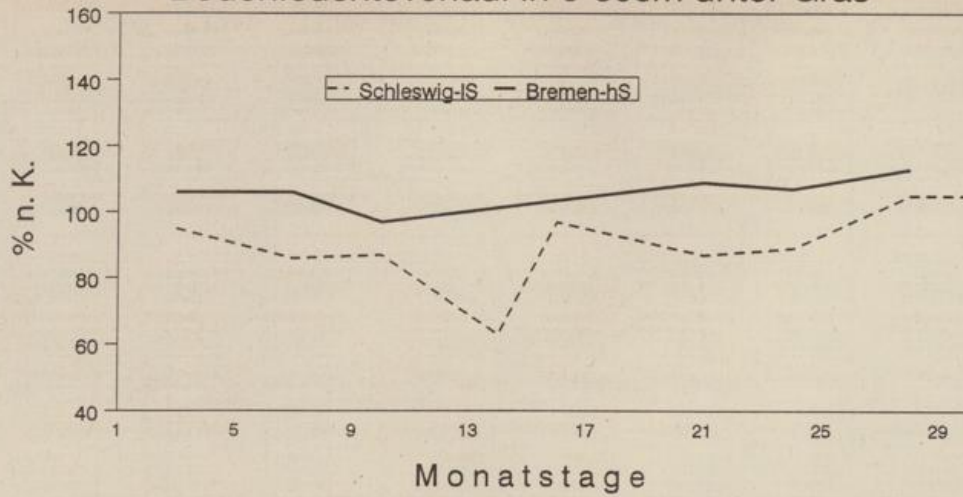


Braunschweig April 1992

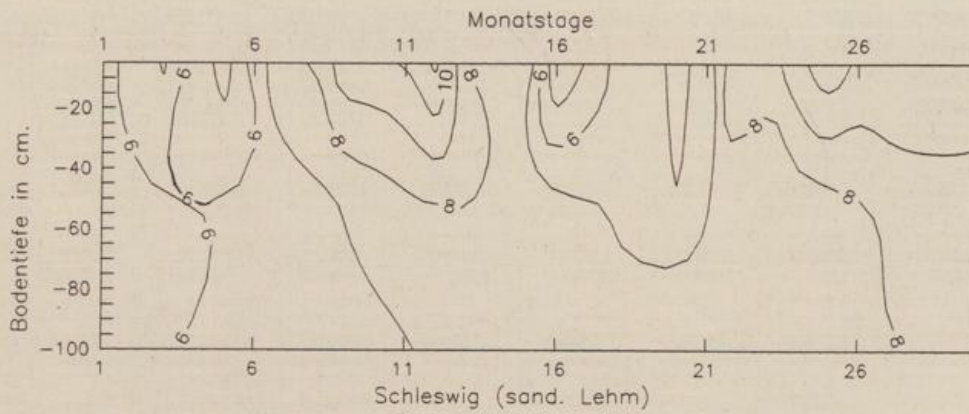


# April 1992

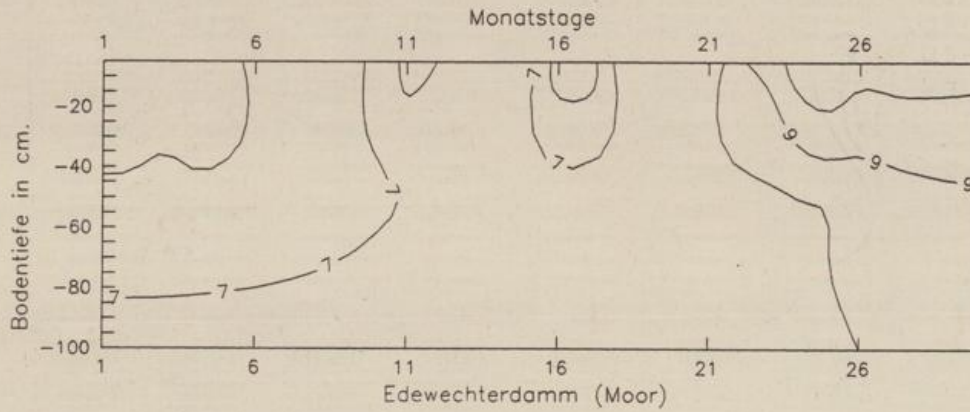
## Bodenfeuchteverlauf in 0-60cm unter Gras



Temperaturverlauf in unbewachsenem Boden in Grad Celsius



Temperaturverlauf in unbewachsenem Boden in Grad Celsius



Temperaturverlauf in unbewachsenem Boden in Grad Celsius

