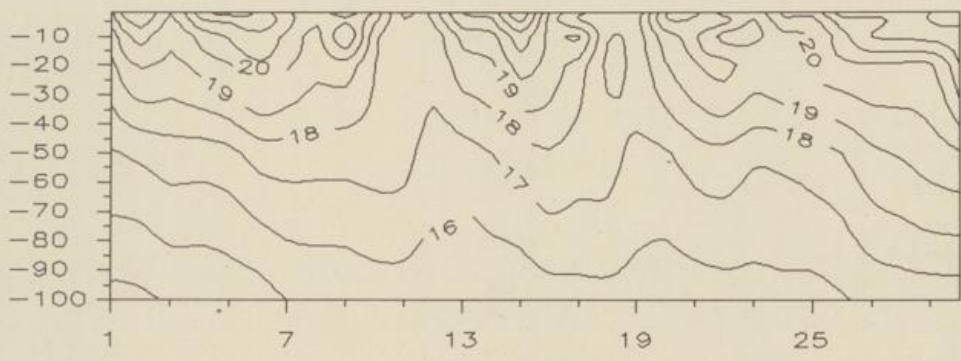
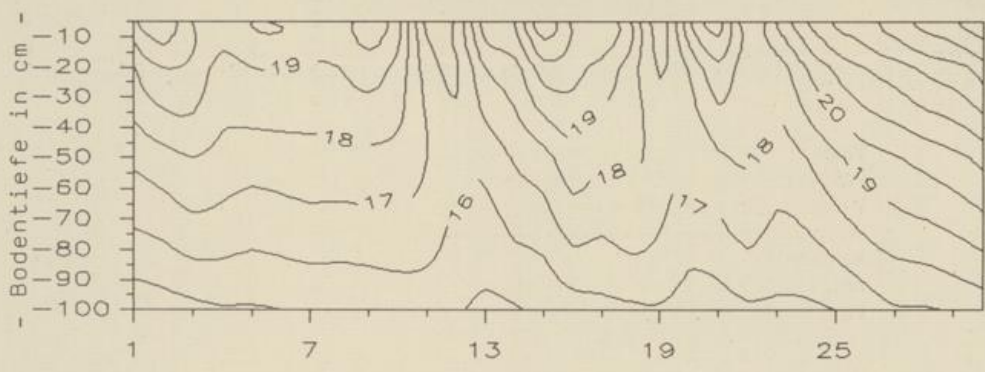


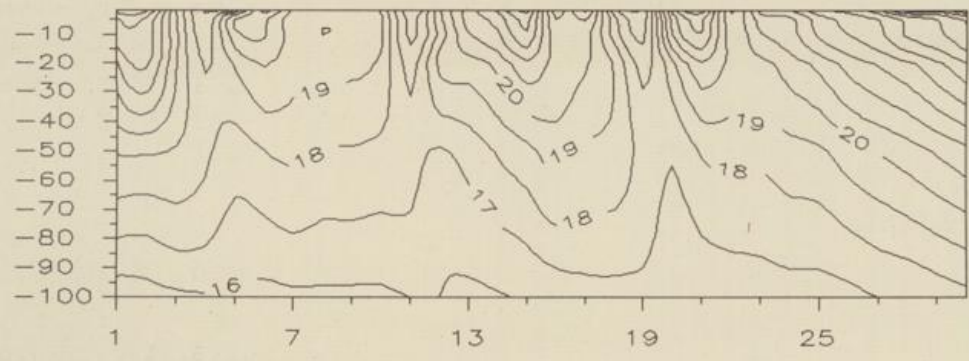
Beilage Nr. 24 zum Agrarmeteorologischen Wochenbericht, Jg. 16, 1992
 Temperaturverlauf in unbewachsenem Boden, Grad C
 Uelzen (sand. Lehm) Juni 1992



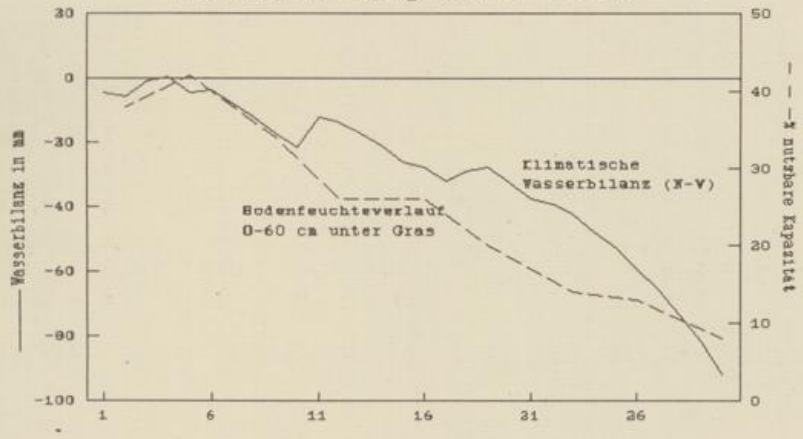
Braunschweig (lehm. Sand) Juni 1992



Bückeberg (sand. Lehm) Juni 1992

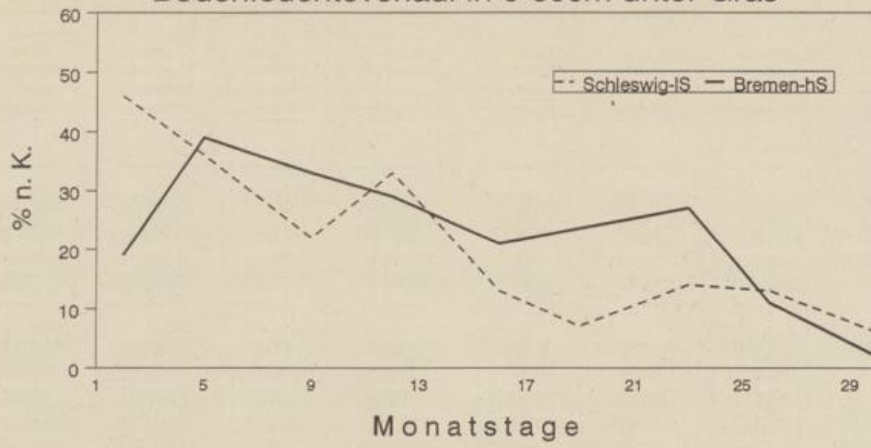


Braunschweig Juni 1992

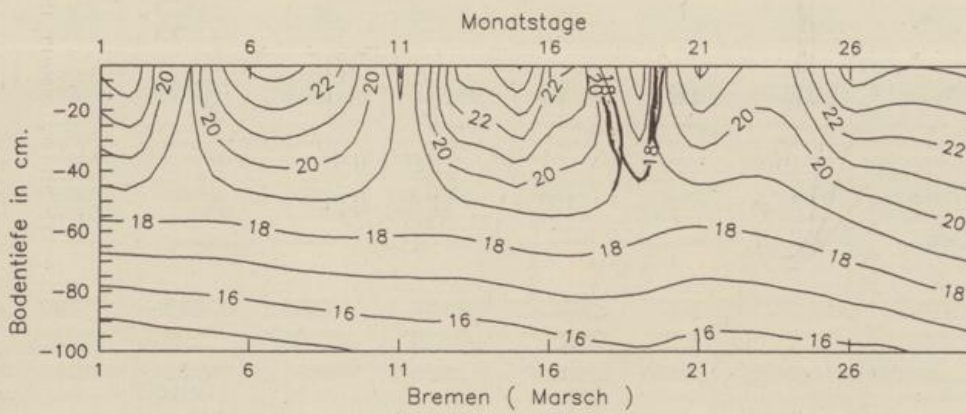


Juni 1992

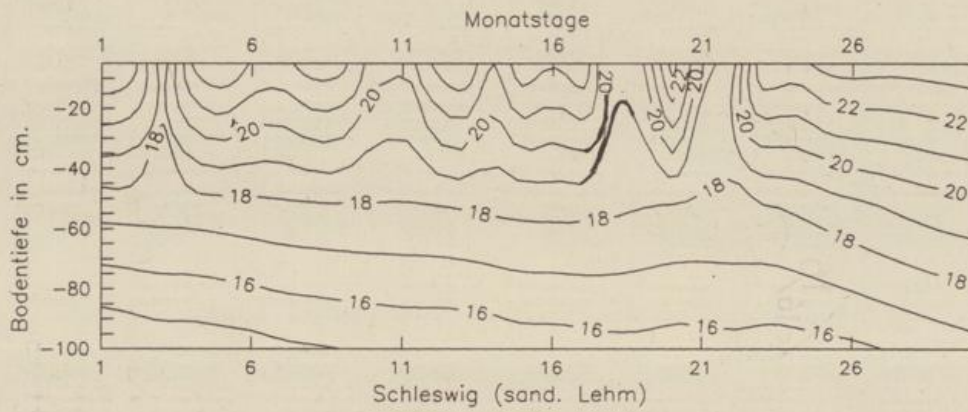
Bodenfeuchteverlauf in 0-60cm unter Gras



Temperaturverlauf in unbewachsenem Boden in Grad Celsius



Temperaturverlauf in unbewachsenem Boden in Grad Celsius



Temperaturverlauf in unbewachsenem Boden in Grad Celsius

