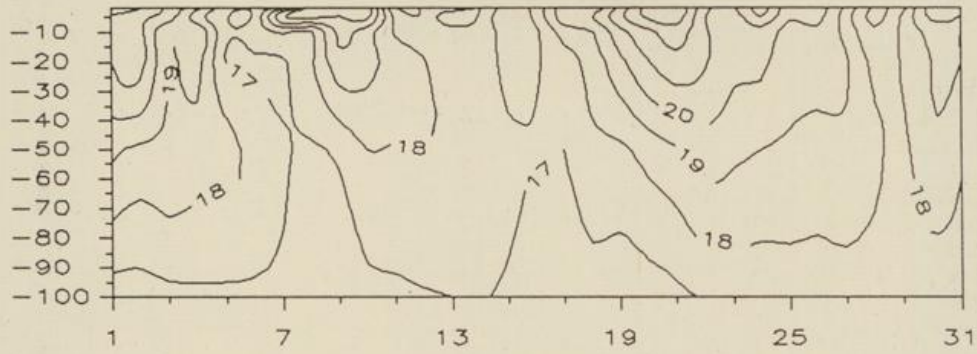
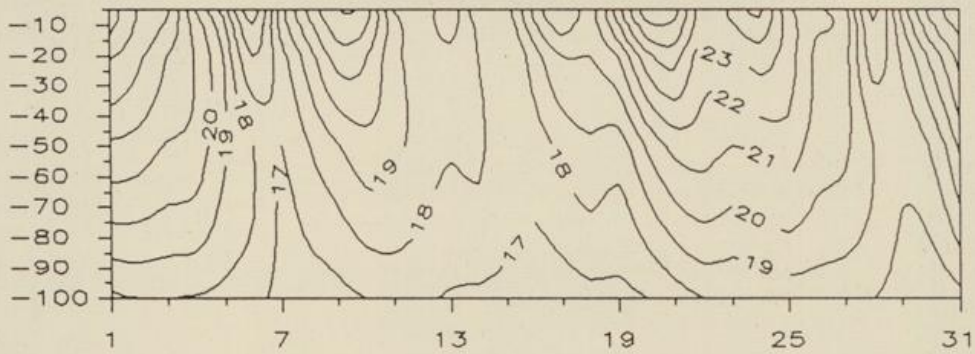


Beilage Nr. 27 zum Agrameteorologischen Wochenbericht, Jg. 16, 1992

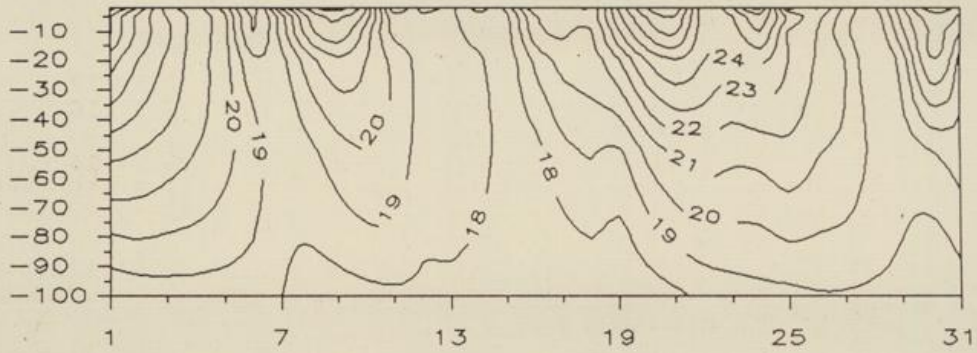
Temperaturverlauf in unbewachsenem Boden, Grad C
Uelzen (sand. Lehm) Juli 1992



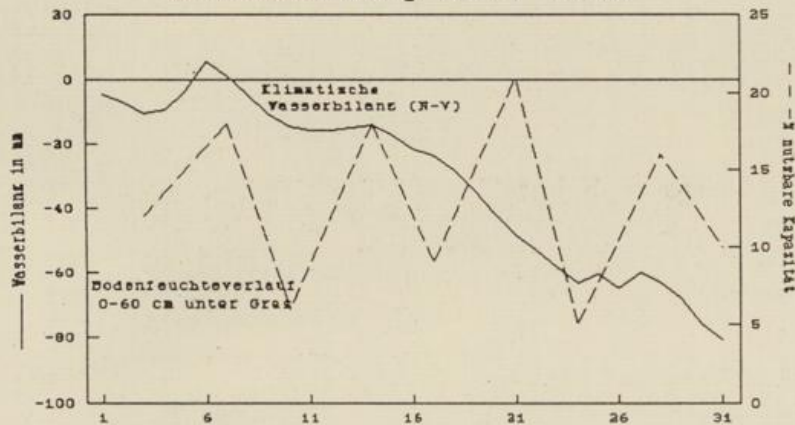
Braunschweig (lehm. Sand) Juli 1992



Bückerburg (sand. Lehm) Juli 1992

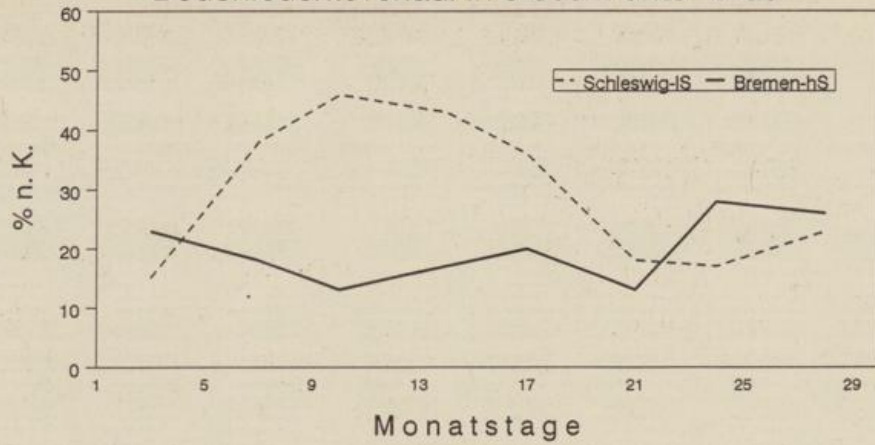


Braunschweig Juli 1992

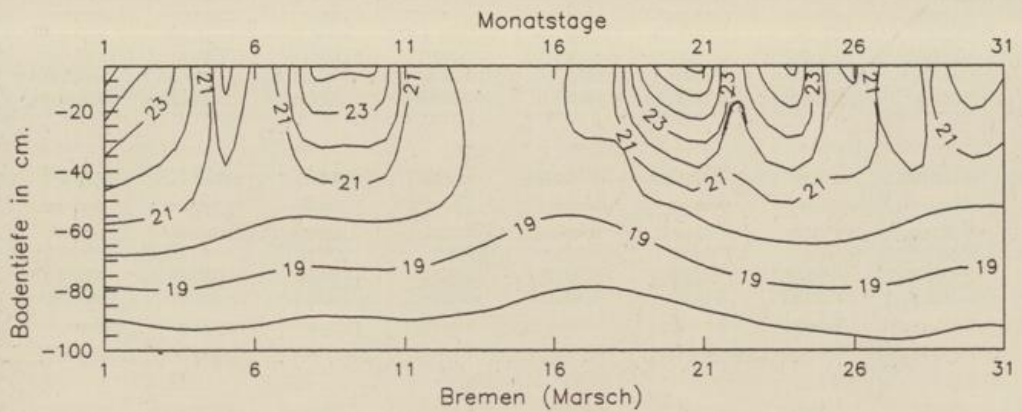


Juli 1992

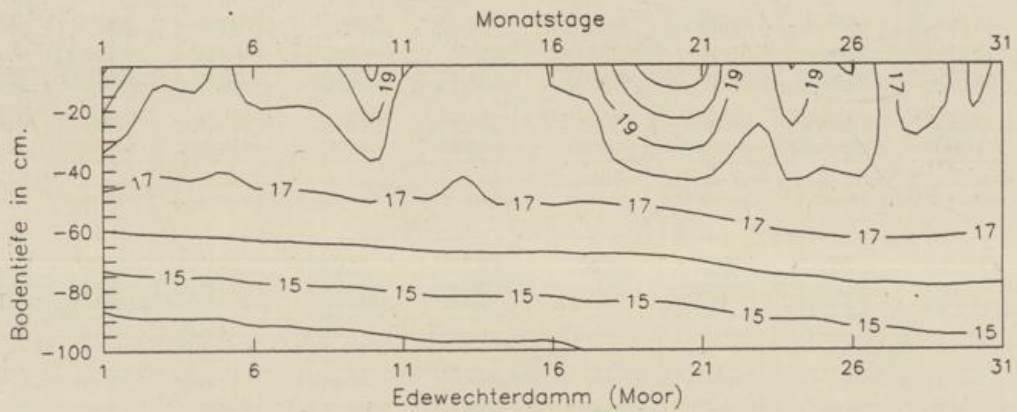
Bodenfeuchteverlauf in 0-60cm unter Gras



Temperaturverlauf in unbewachsenem Boden in Grad Celsius



Temperaturverlauf in unbewachsenem Boden in Grad Celsius



Temperaturverlauf in unbewachsenem Boden in Grad Celsius

