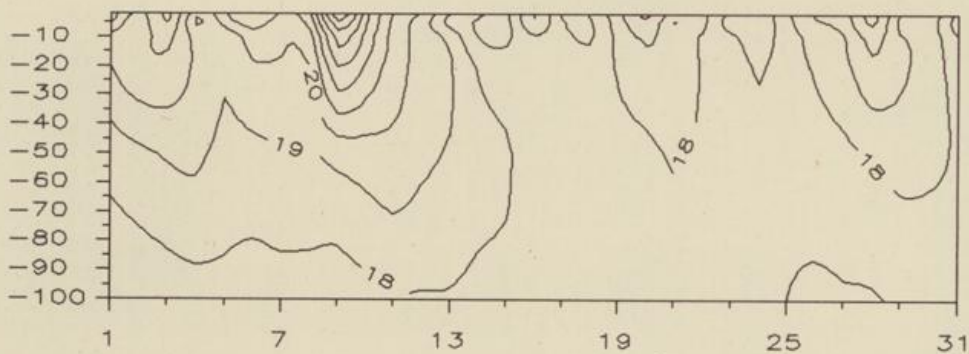
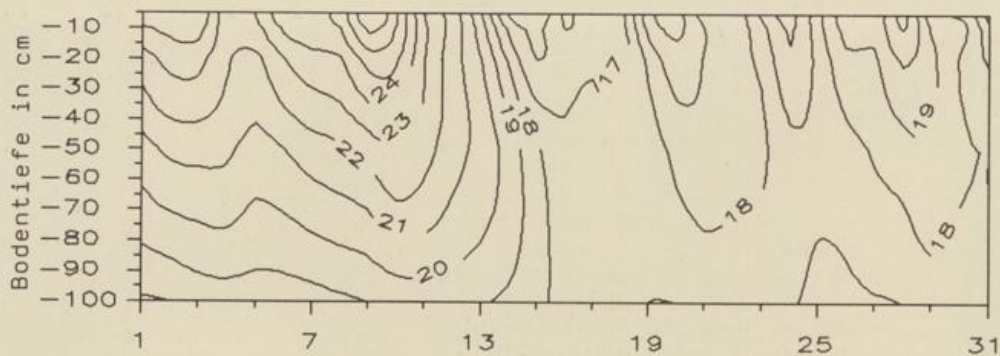


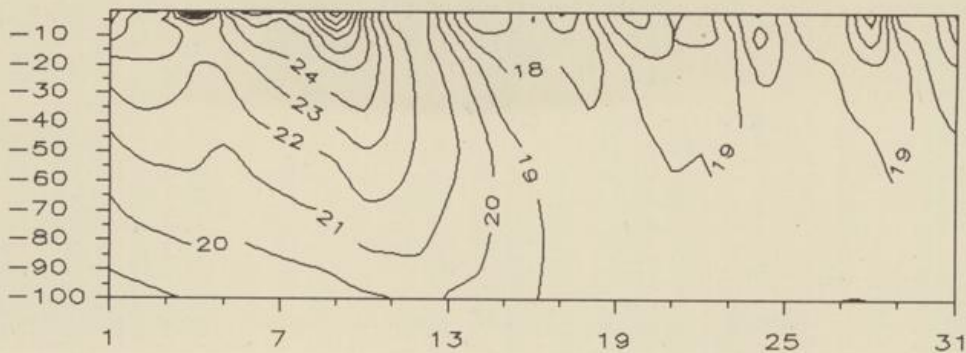
Temperaturverlauf in unbewachsenem Boden, Grad C
Uelzen (sand. Lehm) August 1992



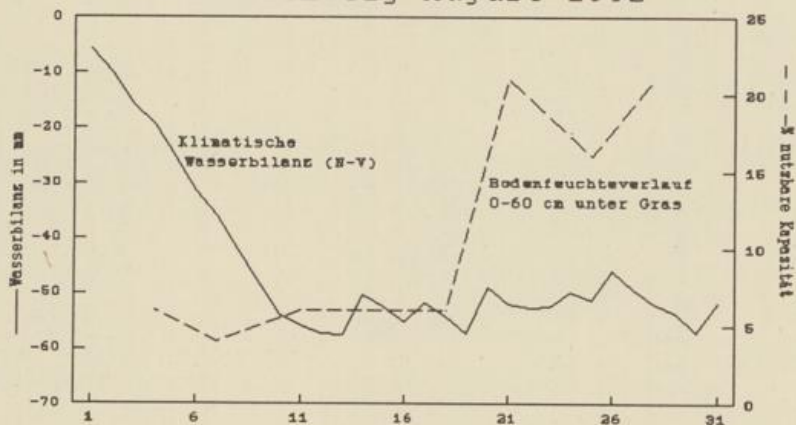
Braunschweig (lehm. Sand) August 1992



Bückerburg (sand. Lehm) August 1992

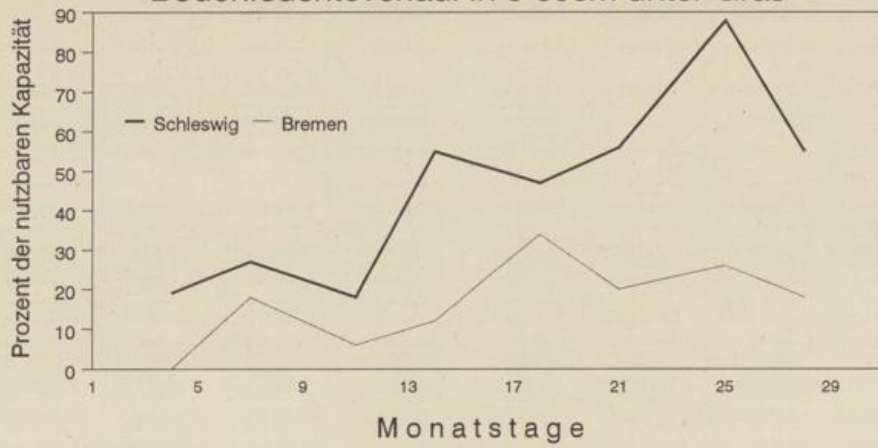


Braunschweig August 1992

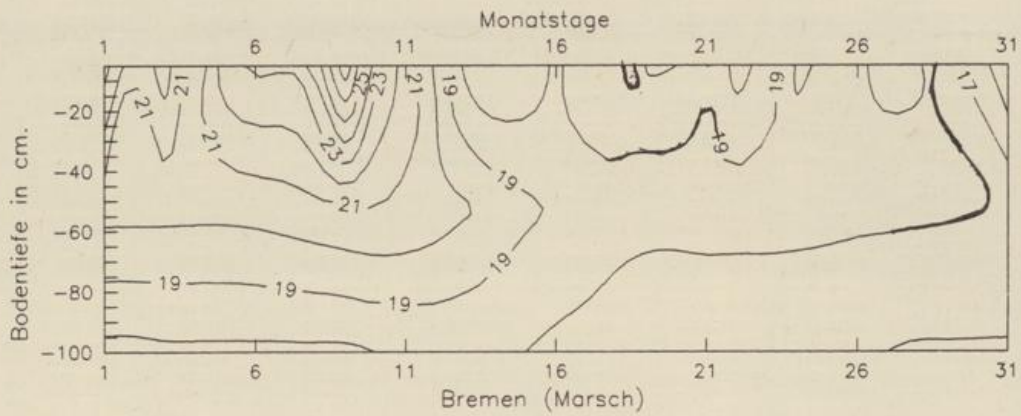


August 1992

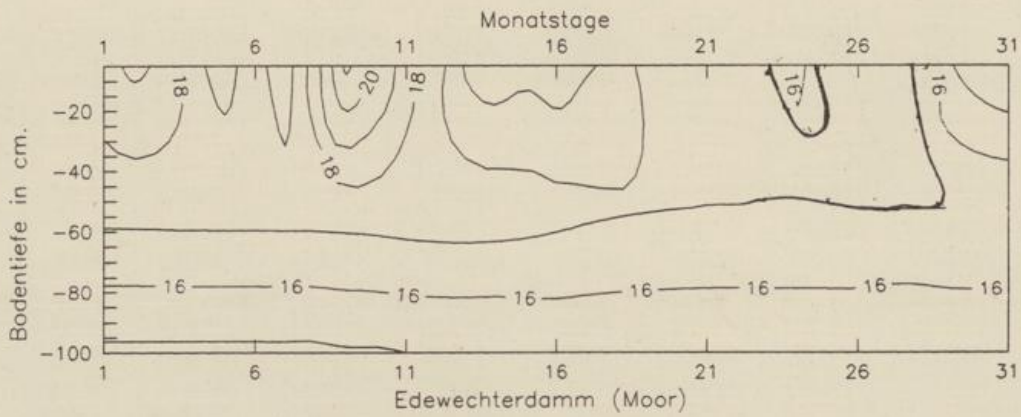
Bodenfeuchteverlauf in 0-60cm unter Gras



Temperaturverlauf in unbewachsenem Boden in Grad Celsius



Temperaturverlauf in unbewachsenem Boden in Grad Celsius



Temperaturverlauf in unbewachsenem Boden in Grad Celsius

