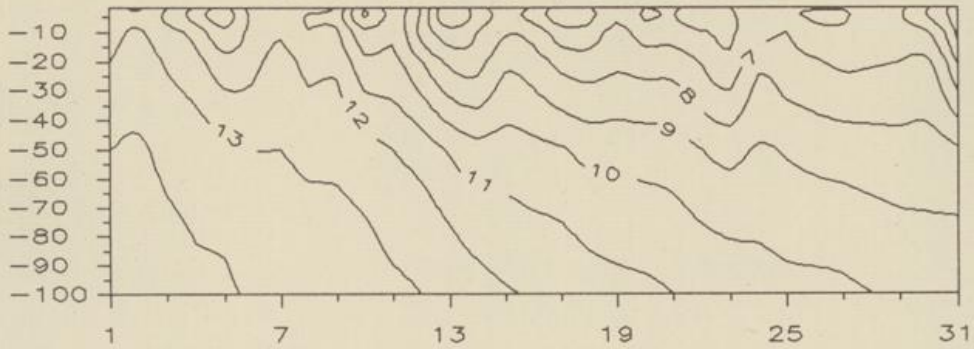
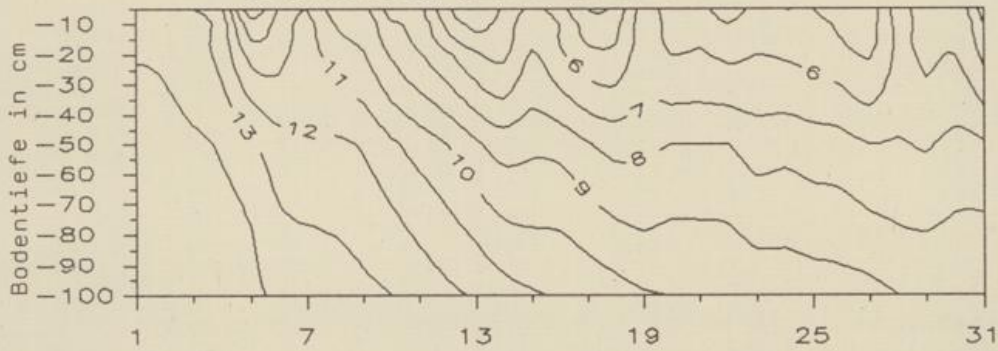


Temperaturverlauf in unbewachsenem Boden, Grad C

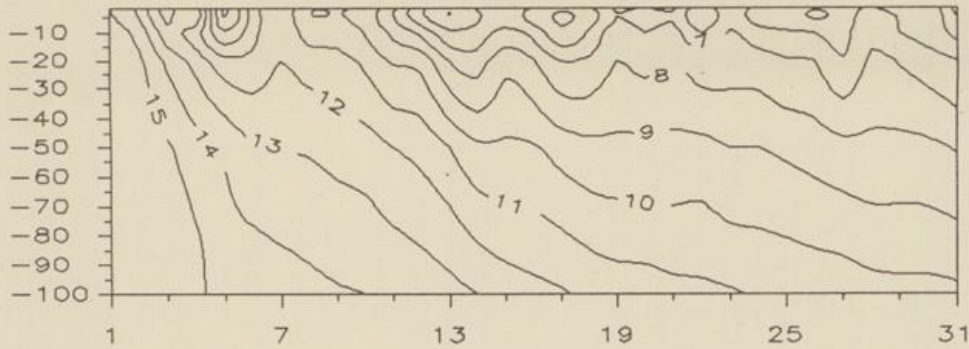
Uelzen (sand. Lehm) Oktober 1992



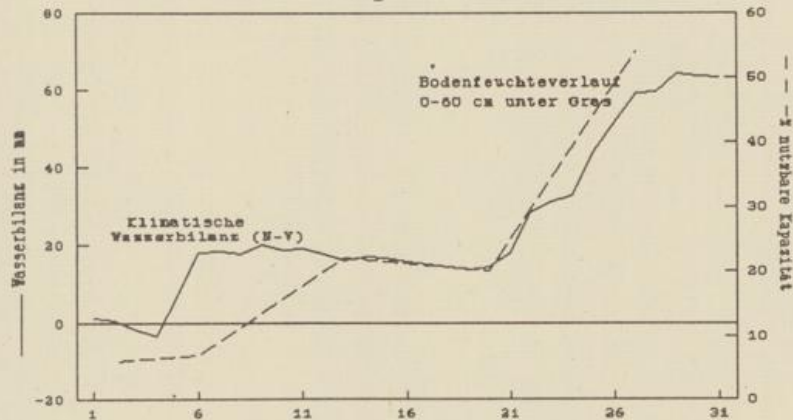
Braunschweig (lehm. Sand) Oktober 1992



Bückerburg (sand. Lehm) Oktober 1992

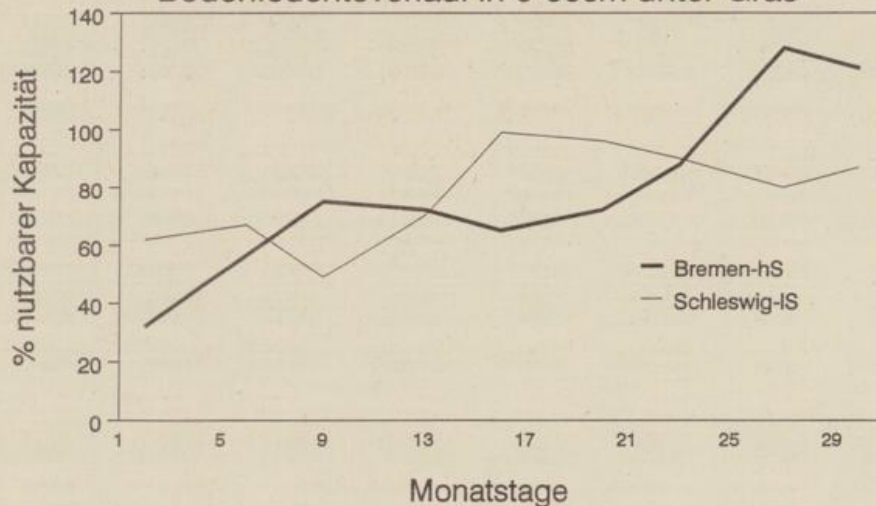


Braunschweig Oktober 1992

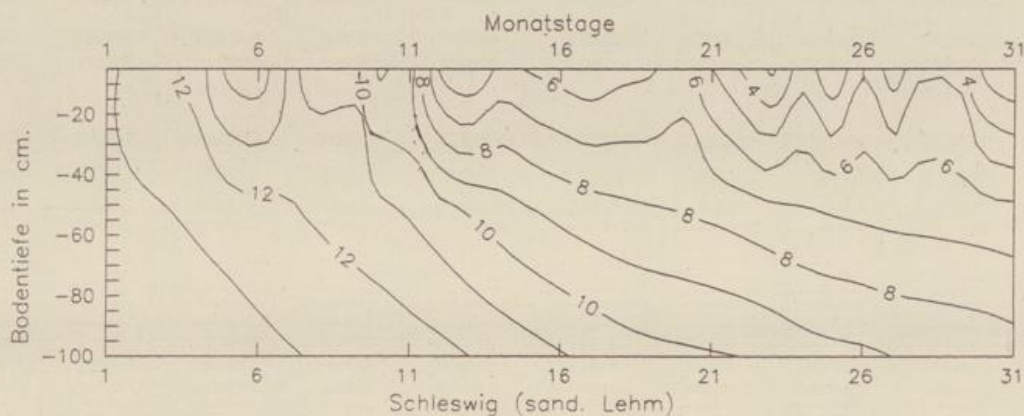


Oktober 1992

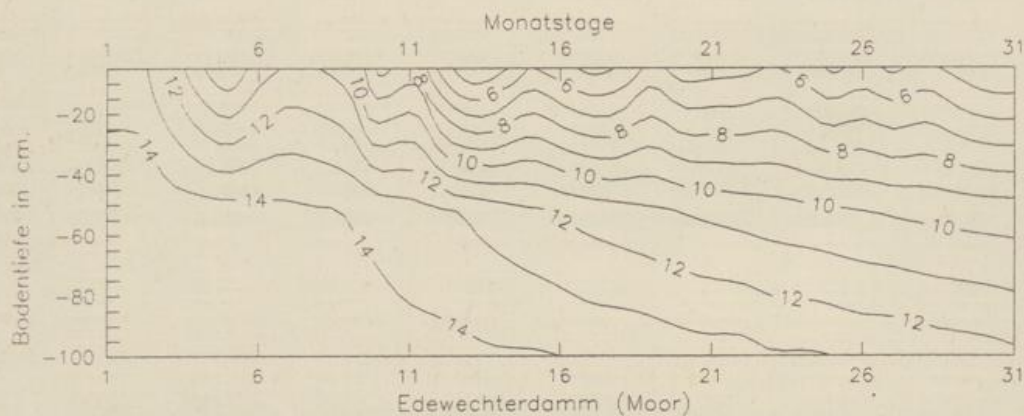
Bodenfeuchteverlauf in 0-60cm unter Gras



Temperaturverlauf in unbewachsenem Boden in Grad Celsius



Temperaturverlauf in unbewachsenem Boden in Grad Celsius



Temperaturverlauf in unbewachsenem Boden in Grad Celsius

