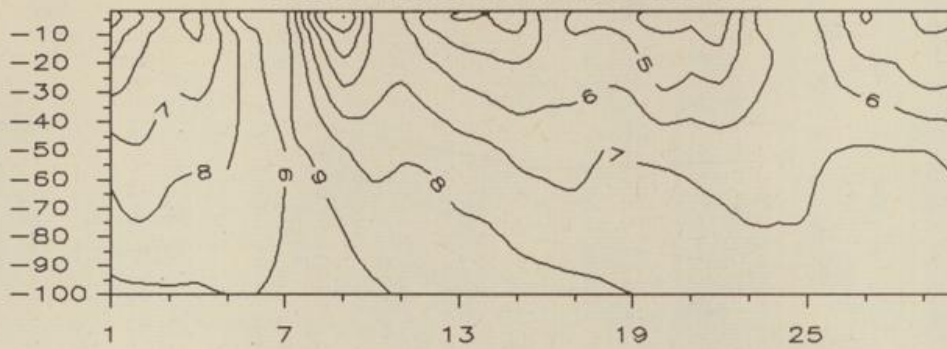
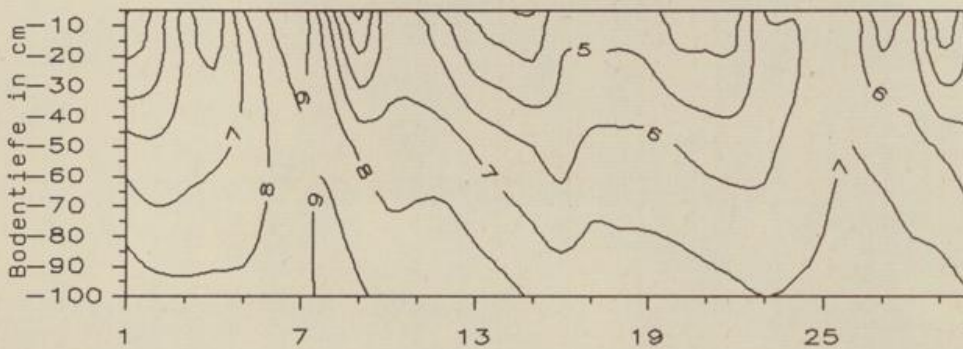


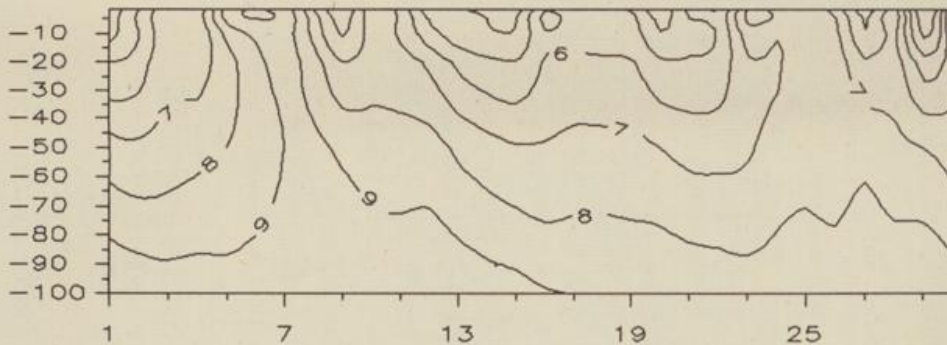
Temperaturverlauf in unbewachsenem Boden, Grad C
Uelzen (sand Lehm) November 1992



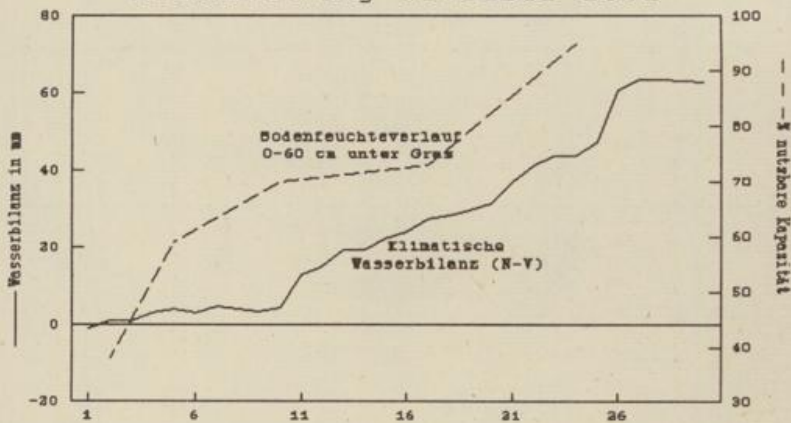
Braunschweig (lehm. Sand) November 1992



Bückerburg (sand. Lehm) November 1992

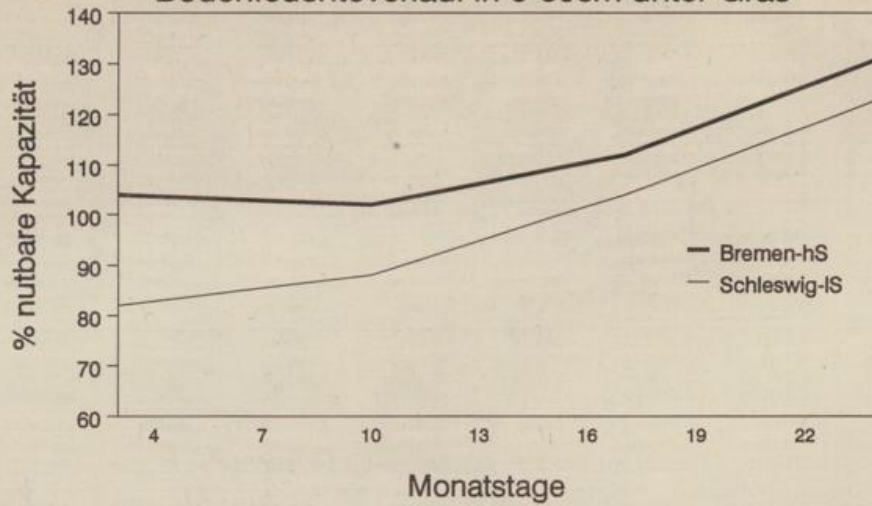


Braunschweig November 1992

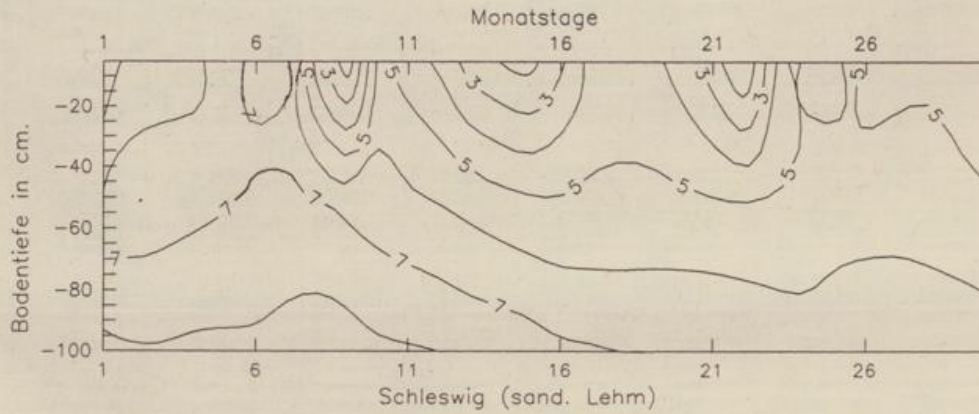


November 1992

Bodenfeuchteverlauf in 0-60cm unter Gras



Temperaturverlauf in unbewachsenem Boden in Grad Celsius



Temperaturverlauf in unbewachsenem Boden in Grad Celsius

